

DHIVY - carbidopa levodopa tablet
Avion Pharmaceuticals, LLC

HIGHLIGHTS OF PRESCRIBING INFORMATION

These highlights do not include all the information needed to use Dhivy safely and effectively. See full prescribing information for Dhivy.

Dhivy (Carbidopa Levodopa) TABLET for ORAL use.
Initial U.S. Approval: 1975

INDICATIONS AND USAGE

DHIVY is a combination of carbidopa (an aromatic amino acid decarboxylation inhibitor) and levodopa (an aromatic amino acid) indicated for the treatment of Parkinson's disease, post-encephalitic parkinsonism, and symptomatic parkinsonism that may follow carbon monoxide intoxication or manganese intoxication (1)

DOSAGE AND ADMINISTRATION

- The recommended starting dosage of DHIVY is one 25 mg /100 mg tablet taken orally three times a day. (2.1)
- Dosage may be increased by up to one whole tablet every day or every other day, as needed, until a maximum dosage of eight whole tablets of DHIVY a day is reached. (2.1)
- Swallow DHIVY with or without food. (2.3)

DOSAGE FORMS AND STRENGTHS

Tablets: Carbidopa and levodopa 25 mg/100 mg, functionally scored. Each DHIVY tablet has 3 functional scores with each segment containing 6.25 mg of carbidopa and 25 mg of levodopa. (3)

CONTRAINDICATIONS

- Nonselective MAO inhibitors (4)
- With known hypersensitivity to any component of DHIVY (4)

WARNINGS AND PRECAUTIONS

- May cause falling asleep during activities of daily living (5.1)
- Avoid sudden discontinuation or rapid dose reduction to reduce the risk of withdrawal-emergent hyperpyrexia and confusion (5.2)
- Cardiovascular Ischemic Events: Monitor patients with a history of cardiovascular disease (5.3)
- Hallucinations/Psychosis may occur (5.4)
- Impulse Control/Compulsive Behaviors: Consider dose reduction or stopping DHIVY if impulse control disorders occur (5.5)
- May cause or exacerbate dyskinesia: Consider dose reduction (5.6)

ADVERSE REACTIONS

The most common adverse reactions reported with carbidopa/levodopa tablets have included dyskinesias, such as choreiform, dystonic, and other involuntary movements, and nausea (6)

To report SUSPECTED ADVERSE REACTIONS, contact at or FDA at 1-800-FDA-1088 or www.fda.gov/medwatch. (6)

DRUG INTERACTIONS

Iron salts and dopamine D2 antagonists including metoclopramide: May reduce the effectiveness of DHIVY (7.2, 7.3)

USE IN SPECIFIC POPULATIONS

Pregnancy: Based on animal data, may cause fetal harm (8.1)

See 17 for PATIENT COUNSELING INFORMATION.

Revised: 7/2022

FULL PRESCRIBING INFORMATION: CONTENTS*

1 INDICATIONS AND USAGE

2 DOSAGE AND ADMINISTRATION

2.1 Initial Dosage and Maintenance of Therapy

2.2 Discontinuation of DHIVY

2.3 Administration Information

3 DOSAGE FORMS AND STRENGTHS

4 CONTRAINDICATIONS

5 WARNINGS AND PRECAUTIONS

5.1 Falling Asleep During Activities of Daily Living and Somnolence

5.2 Withdrawal-Emergent Hyperpyrexia and Confusion

5.3 Cardiovascular Ischemic Events

5.4 Hallucinations/Psychotic-Like Behavior

5.5 Impulse Control/Compulsive Behaviors

5.6 Dyskinesia

5.7 Peptic Ulcer Disease

5.8 Glaucoma

5.9 Laboratory Tests

5.10 Depression/Suicidality

6 ADVERSE REACTIONS

7 DRUG INTERACTIONS

7.1 Monoamine Oxidase (MAO) Inhibitors

7.2 Dopamine D₂ Receptor Antagonists and Isoniazid

7.3 Iron Salts

7.4 Antihypertensive Drugs

7.5 Dopamine-Depleting Agents

7.6 Metoclopramide

8 USE IN SPECIFIC POPULATIONS

8.1 Pregnancy

8.2 Lactation

8.4 Pediatric Use

8.5 Geriatric Use

10 OVERDOSAGE

11 DESCRIPTION

12 CLINICAL PHARMACOLOGY

12.1 Mechanism of Action

12.2 Pharmacodynamics

12.3 Pharmacokinetics

13 NONCLINICAL TOXICOLOGY

13.1 Carcinogenesis, Mutagenesis, Impairment of Fertility

14 CLINICAL STUDIES

16 HOW SUPPLIED/STORAGE AND HANDLING

16.1 How Supplied

16.2 Storage and Handling

17 PATIENT COUNSELING INFORMATION

* Sections or subsections omitted from the full prescribing information are not listed.

FULL PRESCRIBING INFORMATION

1 INDICATIONS AND USAGE

DHIVY is indicated for the treatment of Parkinson's disease, post-encephalitic parkinsonism, and symptomatic parkinsonism that may follow carbon monoxide intoxication or manganese intoxication.

2 DOSAGE AND ADMINISTRATION

2.1 Initial Dosage and Maintenance of Therapy

The recommended starting dosage of DHIVY is one 25 mg / 100 mg tablet taken orally three times a day. This dosage schedule provides 75 mg of carbidopa per day. Dosage may be increased by up to one whole tablet every day or every other day, as needed to a maximum daily dosage of eight whole tablets.

Dosing with DHIVY should be individualized and adjusted according to clinical response and tolerability. The tablet is functionally scored to facilitate dose adjustment. At least 70 mg to 100 mg of carbidopa per day should be provided. Experience with total daily dosages of carbidopa greater than 200 mg is limited.

Monitor patients closely during the dose adjustment period. Specifically, involuntary movements may occur with DHIVY, which may require dosage reduction. Blepharospasm may be a useful early sign of excess dosage in some patients.

Maintain patients on the lowest dosage required to achieve symptomatic control and to minimize adverse reactions, such as dyskinesia and nausea.

2.2 Discontinuation of DHIVY

Avoid sudden discontinuation or rapid dose reduction of DHIVY. The daily dosage of DHIVY should be tapered at the time of treatment discontinuation [*see Warnings and Precautions (5.2)*].

If general anesthesia is required, DHIVY may be continued as long as the patient is permitted to take fluids and medication by mouth. If therapy is interrupted temporarily, the patient should be observed for symptoms resembling neuroleptic malignant syndrome, and the usual daily dosage may be administered as soon as the patient is able to take oral medication.

2.3 Administration Information

Swallow DHIVY with or without food. The patient should be advised that a change in diet to foods that are high in protein may delay the absorption of levodopa and may reduce the amount taken up in the circulation. Excessive acidity also delays stomach emptying, thus delaying the absorption of levodopa.

If the patient has difficulty swallowing the tablet due to its size, the tablet can be broken at the score lines.

3 DOSAGE FORMS AND STRENGTHS

DHIVY tablets are white to off-white tablets containing 25 mg of carbidopa and 100 mg of levodopa. Each DHIVY tablet has 3 functional scores with each segment containing 6.25 mg of carbidopa and 25 mg of levodopa.

4 CONTRAINDICATIONS

DHIVY is contraindicated in patients

- Currently taking a nonselective monoamine oxidase (MAO) inhibitor (e.g., phenelzine, linezolid, and tranylcypromine) or have recently (within 2 weeks) taken a nonselective MAO inhibitor. Hypertension can occur if these drugs are used concurrently [*see Drug Interactions (7.1)*].
- With known hypersensitivity to any component of DHIVY [*see Adverse Reactions (6)*].

5 WARNINGS AND PRECAUTIONS

5.1 Falling Asleep During Activities of Daily Living and Somnolence

Patients taking carbidopa/levodopa alone or with other dopaminergic drugs have reported suddenly falling asleep without prior warning of sleepiness while engaged in activities of daily living, including the operation of motor vehicles which have resulted in accidents. Although many patients reported somnolence while on dopaminergic medications, some perceived that they had no warning signs (sleep attack), such as excessive drowsiness, and believed that they were alert immediately prior to the event. Sudden onset of sleep has been reported to occur more than one year after the initiation of treatment.

It has been reported that falling asleep while engaged in activities of daily living usually occurs in a setting of pre-existing somnolence, although some patients may not give such a history. For this reason, prescribers should reassess patients for drowsiness or sleepiness in DHIVY-treated patients, especially since some of the events occur well after the start of treatment. Prescribers should be aware that patients may not acknowledge drowsiness or sleepiness until directly questioned about drowsiness or sleepiness during specific activities.

Before initiating treatment with DHIVY, advise patients about the potential to develop drowsiness and ask specifically about factors that may increase the risk for somnolence with DHIVY such as the use of concomitant sedating medications and the presence of sleep disorders. Consider discontinuing DHIVY in patients who report significant daytime sleepiness or episodes of falling asleep during activities that require active participation (e.g., conversations, eating, etc.). If treatment with DHIVY continues, advise patients not to drive and to avoid other potentially dangerous activities that might result in harm if the patients become somnolent. There is insufficient information to establish that dose reduction will eliminate episodes of falling asleep while engaged in activities of daily living.

5.2 Withdrawal-Emergent Hyperpyrexia and Confusion

A symptom complex that resembles neuroleptic malignant syndrome (characterized by elevated temperature, muscular rigidity, altered consciousness, and autonomic instability), with no other obvious etiology, has been reported in association with rapid

dose reduction, withdrawal of, or changes in dopaminergic therapy. Avoid sudden discontinuation or rapid dose reduction in patients taking DHIVY. If the decision is made to discontinue DHIVY, the dose should be tapered to reduce the risk of hyperpyrexia and confusion [*see Dosage and Administration (2.2)*].

5.3 Cardiovascular Ischemic Events

In patients with a history of myocardial infarction who have residual atrial, nodal, or ventricular arrhythmias, cardiac function should be monitored in an intensive cardiac care facility during the period of initial dosage adjustment.

5.4 Hallucinations/Psychotic-Like Behavior

Hallucinations and psychotic-like behavior have been reported with dopaminergic medications. In general, hallucinations present shortly after the initiation of therapy and may be responsive to dose reduction in levodopa. Hallucinations may be accompanied by confusion, sleep disorder (insomnia), and excessive dreaming.

Abnormal thinking and behavior may present with one or more symptoms, including paranoid ideation, delusions, hallucinations, confusion, psychotic-like behavior, disorientation, aggressive behavior, agitation, and delirium.

Patients with a major psychotic disorder should not be treated with DHIVY, because of the risk of exacerbating psychosis. In addition, medications that antagonize the effects of dopamine used to treat psychosis may exacerbate the symptoms of Parkinson's disease and may decrease the effectiveness of DHIVY [*see Drug Interactions (7.2)*].

5.5 Impulse Control/Compulsive Behaviors

Case reports suggest that patients can experience an intense urge to gamble, increased sexual urges, intense urges to spend money, binge eating, and/or other intense urges, and the inability to control these urges while taking one or more of the medications, including DHIVY, that increase central dopaminergic tone and that are generally used for the treatment of Parkinson's disease. In some cases, although not all, these urges were reported to have stopped when the dosage was reduced or the medication was discontinued.

Because patients may not recognize these behaviors as abnormal, it is important for prescribers to specifically ask patients or the caregivers about the development of new or increased gambling urges, sexual urges, uncontrolled spending, or other urges while being treated with DHIVY. Consider dosage reduction or stopping the medication if a patient develops such urges while taking DHIVY.

5.6 Dyskinesia

DHIVY can cause dyskinesias that may require a dosage reduction of DHIVY or other medications used for the treatment of Parkinson's disease.

5.7 Peptic Ulcer Disease

Treatment with DHIVY may increase the possibility of upper gastrointestinal hemorrhage in patients with a history of peptic ulcer.

5.8 Glaucoma

DHIVY may cause increased intraocular pressure in patients with glaucoma. Monitor intraocular pressure in patients with glaucoma after starting DHIVY.

5.9 Laboratory Tests

DHIVY may cause a positive Coombs test or false-positive reaction for urinary ketone bodies when a test tape is used for determination of ketonuria. This reaction will not be altered by boiling the urine specimen. False-negative tests may result with the use of glucose-oxidase methods of testing for glucosuria.

Cases of falsely diagnosed pheochromocytoma in patients on carbidopa-levodopa therapy have been reported. Caution should be exercised when interpreting the plasma and urine levels of catecholamines and their metabolites in patients on carbidopa levodopa therapy.

5.10 Depression/Suicidality

All patients taking DHIVY should be observed carefully for the development of depression with concomitant suicidal tendencies.

6 ADVERSE REACTIONS

The following serious adverse reactions are discussed below and elsewhere in the labeling:

- Falling Asleep During Activities of Daily Living and Somnolence [*see Warnings and Precautions (5.1)*]
- Withdrawal-Emergent Hyperpyrexia and Confusion [*see Warnings and Precautions (5.2)*]
- Cardiovascular Ischemic Events [*see Warnings and Precautions (5.3)*]
- Hallucinations/Psychotic-Like Behavior [*see Warnings and Precautions (5.4)*]
- Impulse Control/Compulsive Behaviors [*see Warnings and Precautions (5.5)*]
- Dyskinesia [*see Warnings and Precautions (5.6)*]
- Peptic Ulcer Disease [*see Warnings and Precautions (5.7)*]
- Glaucoma [*see Warnings and Precautions (5.8)*]
- Depression//Suicidality [*see Warnings and Precautions (5.10)*]

The most common adverse reactions reported with carbidopa/levodopa tablets have included dyskinesias, such as choreiform, dystonic, and other involuntary movements, and nausea.

The following other adverse reactions have been reported with carbidopa/levodopa tablets:

Body as a Whole

Chest pain, asthenia.

Cardiovascular

Cardiac irregularities, hypotension, orthostatic effects including orthostatic hypotension, hypertension, syncope, phlebitis, palpitation.

Gastrointestinal

Dark saliva, gastrointestinal bleeding, development of duodenal ulcer, anorexia, vomiting, diarrhea, constipation, dyspepsia, dry mouth, taste alterations.

Hematologic

Agranulocytosis, hemolytic and non-hemolytic anemia, thrombocytopenia, leukopenia.

Hypersensitivity

Angioedema, urticaria, pruritus, Henoch-Schönlein purpura, bullous lesions (including pemphigus-like reactions).

Musculoskeletal

Back pain, shoulder pain, muscle cramps.

Nervous System/Psychiatric

Psychotic episodes including delusions, hallucinations, and paranoid ideation, bradykinetic episodes ("on-off" phenomenon), confusion, agitation, dizziness, somnolence, dream abnormalities including nightmares, insomnia, paresthesia, headache, depression with or without development of suicidal tendencies, dementia, pathological gambling, increased libido including hypersexuality, impulse control symptoms. Convulsions also have occurred; however, a causal relationship with DHIVY has not been established.

Respiratory

Dyspnea, upper respiratory infection.

Skin

Rash, increased sweating, alopecia, dark sweat.

Urogenital

Urinary tract infection, urinary frequency, dark urine.

Laboratory Tests

Decreased hemoglobin and hematocrit; abnormalities in alkaline phosphatase, SGOT (AST), SGPT (ALT), LDH, bilirubin, BUN, Coombs test; elevated serum glucose; white blood cells, bacteria, and blood in the urine.

Other adverse reactions that have been reported with levodopa alone and with various carbidopa levodopa formulations, and may occur with DHIVY are:

Body as a Whole

Abdominal pain and distress, fatigue.

Cardiovascular

Myocardial infarction.

Gastrointestinal

Gastrointestinal pain, dysphagia, sialorrhea, flatulence, bruxism, burning sensation of the tongue, heartburn, hiccups.

Metabolic

Edema, weight gain, weight loss.

Musculoskeletal

Leg pain.

Nervous System/Psychiatric

Ataxia, extrapyramidal disorder, falling, anxiety, gait abnormalities, nervousness, decreased mental acuity, memory impairment, disorientation, euphoria, blepharospasm (which may be taken as an early sign of excess dosage; consideration of dosage reduction may be made at this time), trismus, increased tremor, numbness, muscle twitching, activation of latent Horner's syndrome, peripheral neuropathy.

Respiratory

Pharyngeal pain, cough.

Skin

Malignant melanoma, flushing.

Special Senses

Oculogyric crises, diplopia, blurred vision, dilated pupils.

Urogenital

Urinary retention, urinary incontinence, priapism.

Miscellaneous

Bizarre breathing patterns, faintness, hoarseness, malaise, hot flashes, sense of stimulation.

7 DRUG INTERACTIONS

7.1 Monoamine Oxidase (MAO) Inhibitors

The use of nonselective MAO inhibitors with DHIVY is contraindicated [see *Contraindications (4)*]. Discontinue use of any nonselective MAO inhibitors at least two weeks prior to initiating DHIVY.

DHIVY may be administered concomitantly with the manufacturer's recommended dose of selective MAO-B inhibitors (e.g., rasagiline or selegiline HCl). Concomitant therapy with selegiline and carbidopa/levodopa may be associated with severe orthostatic hypotension not attributable to carbidopa/levodopa alone.

7.2 Dopamine D₂ Receptor Antagonists and Isoniazid

Dopamine D₂ receptor antagonists (e.g., phenothiazines, butyrophenones, risperidone) and isoniazid may reduce the effectiveness of levodopa. Monitor patients taking these drugs with DHIVY for worsening Parkinson's symptoms.

7.3 Iron Salts

Iron salts or multivitamins containing iron salts can form chelates with levodopa and carbidopa and can cause a reduction in the bioavailability of DHIVY. If iron salts or

multivitamins containing iron salts are co-administered with DHIVY, monitor patients for worsening Parkinson's symptoms.

7.4 Antihypertensive Drugs

Symptomatic postural hypotension occurred when carbidopa/levodopa was added to the treatment of a patient receiving antihypertensive drugs. Therefore, when therapy with DHIVY is started, dosage adjustment of the antihypertensive drug may be required.

7.5 Dopamine-Depleting Agents

Use of DHIVY with dopamine-depleting agents (e.g., reserpine and tetrabenazine) or other drugs known to deplete monoamine stores is not recommended.

7.6 Metoclopramide

Although metoclopramide may increase the bioavailability of levodopa by increasing gastric emptying, metoclopramide may also reduce effectiveness of levodopa by its dopamine receptor antagonistic properties.

8 USE IN SPECIFIC POPULATIONS

8.1 Pregnancy

Risk Summary

There are no adequate data on the developmental risk associated with the use of DHIVY in pregnant women. In animal studies, carbidopa/levodopa has been shown to be developmentally toxic (including teratogenic effects) at clinically relevant doses (*see Data*).

The estimated background risk of major birth defects and miscarriage in the indicated population is unknown. In the U.S. general population, the estimated background risk of major birth defects and miscarriage in clinically recognized pregnancies is 2% to 4% and 15% to 20%, respectively.

Data

Animal Data

When administered to pregnant rabbits throughout organogenesis, carbidopa-levodopa caused both visceral and skeletal malformations in fetuses at all doses and ratios of carbidopa-levodopa tested. No teratogenic effects were observed when carbidopa-levodopa was administered to pregnant mice throughout organogenesis.

8.2 Lactation

Risk Summary

Levodopa has been detected in human milk after administration of carbidopa-levodopa. There are no data on the presence of carbidopa in human milk, the effects of levodopa or carbidopa on the breastfed infant, or the effects on milk production. However, inhibition of lactation may occur because levodopa decreases secretion of prolactin in humans.

The developmental and health benefits of breastfeeding should be considered along with the mother's clinical need for DHIVY and any potential adverse effects on the breastfed infant from DHIVY or from the underlying maternal condition.

8.4 Pediatric Use

Safety and effectiveness in pediatric patients have not been established.

8.5 Geriatric Use

Of the total number of subjects in clinical studies of immediate-release carbidopa-levodopa tablets (i.e., Sinemet[®]), almost half of the patients were older than age 65 years, and few were age 75 years and over. No overall differences in safety or effectiveness were observed between these subjects and younger subjects, but greater sensitivity of some older individuals to adverse drug reactions such as hallucinations cannot be ruled out.

The systemic exposure of levodopa was increased in elderly subjects compared to young subjects [*see Clinical Pharmacology (12.3)*]. There is no specific dosing recommendation based upon clinical pharmacology data as carbidopa/levodopa is titrated as tolerated for clinical effect.

10 OVERDOSAGE

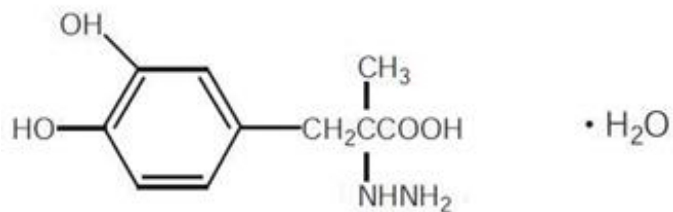
Based on the limited available information, the acute symptoms of levodopa/dopa decarboxylase inhibitor overdose can be expected to arise from dopaminergic overstimulation. Doses of a few grams may result in CNS disturbances, with an increasing likelihood of cardiovascular disturbance (e.g., hypotension, tachycardia) and more severe psychiatric problems at higher doses. An isolated report of rhabdomyolysis and another of transient renal insufficiency suggest that levodopa overdose may give rise to systemic complications, secondary to dopaminergic overstimulation.

Monitor patients and provide supportive care. Patients should receive electrocardiographic monitoring for the development of arrhythmias; if needed, appropriate antiarrhythmic therapy should be given. The possibility that the patient may have taken other drugs, increasing the risk of drug interactions (especially catechol-structured drugs) should be taken into consideration.

11 DESCRIPTION

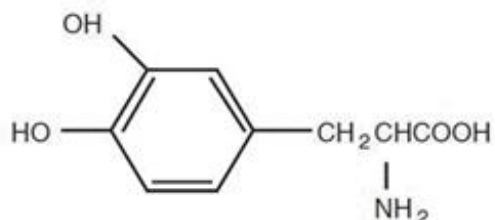
DHIVY[®] (carbidopa levodopa) is a combination of carbidopa, an inhibitor of aromatic amino acid decarboxylation, and levodopa, an aromatic amino acid, in tablets for oral use.

Carbidopa is a white, crystalline compound, slightly soluble in water, with a molecular weight of 244.3. It is designated chemically as (-)-L- α -hydrazino- α -methyl- β -(3,4-dihydroxy-benzene) propanoic acid monohydrate. It has a pKa of 2.3. Its molecular formula is C₁₀H₁₄N₂O₄•H₂O and its structural formula is:



Tablet content is expressed in terms of anhydrous carbidopa, which has a molecular weight of 226.3.

Levodopa is a white, crystalline compound, slightly soluble in water, with a molecular weight of 197.2. It is designated chemically as (-)-L- α -amino- β -(3,4-dihydroxybenzene) propanoic acid. It has a pKa of 2.32. Its molecular formula is C₉H₁₁NO₄ and its structural formula is:



DHIVY is supplied as tablets for oral administration containing 25 mg of carbidopa and 100 mg of levodopa. The inactive ingredients are magnesium stearate, microcrystalline cellulose, and pregelatinized starch.

12 CLINICAL PHARMACOLOGY

12.1 Mechanism of Action

Carbidopa

When levodopa is administered orally, it is rapidly decarboxylated to dopamine in extracerebral tissues so that only a small portion of a given dose is transported unchanged to the central nervous system. Carbidopa inhibits the decarboxylation of peripheral levodopa, making more levodopa available for delivery to the brain.

Levodopa

Levodopa is the metabolic precursor of dopamine, does cross the blood-brain barrier, and presumably is converted to dopamine in the brain. This is thought to be the mechanism whereby levodopa treats symptoms of Parkinson's disease.

12.2 Pharmacodynamics

Because its decarboxylase inhibiting activity is limited to extracerebral tissues, administration of carbidopa with levodopa makes more levodopa available to the brain. Carbidopa does not cross the blood-brain barrier and does not affect the metabolism of levodopa within the central nervous system. The addition of carbidopa to levodopa

reduces the peripheral effects (nausea, vomiting) due to decarboxylation of levodopa; however, carbidopa does not decrease the adverse reactions due to the central effects of levodopa.

Patients treated with levodopa therapy for Parkinson's disease may develop motor fluctuations characterized by end-of-dose failure, peak dose dyskinesia, 'on-off' phenomenon, and akinesia.

12.3 Pharmacokinetics

Following single oral administration of a DHIVY tablet, DHIVY was shown to be bioequivalent to an immediate-release carbidopa/levodopa 25/100 mg tablet under fasting conditions for both carbidopa and levodopa.

Absorption

Following oral dosing of DHIVY under fasted conditions, the maximum concentration occurred at 3 hours for carbidopa and 1 hour for levodopa. The exposure of DHIVY after dose fractionation is proportional.

Effect of Food

In healthy adults, oral administration of DHIVY after a high-fat, high-calorie meal reduced levodopa C_{max} by approximately 25% while the AUC remained unchanged. The peak concentration of both carbidopa/levodopa were observed approximately 30 minutes later when DHIVY is taken with a high-fat, high-calorie meal.

Since levodopa competes with certain amino acids for transport across the gut wall, the absorption of levodopa may be impaired in some patients on a high protein diet [see Dosage and Administration (2.3)].

Distribution

Carbidopa is approximately 36% bound to plasma proteins. Levodopa is approximately 10% to 30% bound to plasma proteins.

Elimination

Following oral dosing of DHIVY under fasted conditions, the half-life was reported at approximately 3.5 hours for carbidopa and 2 hours for levodopa.

In clinical pharmacologic studies, simultaneous administration of carbidopa and levodopa produced greater urinary excretion of levodopa in proportion to the excretion of dopamine than administration of the two drugs at separate times.

Specific Populations

Geriatric Patients

A study in eight young healthy subjects (21-22 years) and eight elderly healthy subjects (69-76 years) showed that the absolute bioavailability of levodopa was similar between young and elderly subjects following oral administration of levodopa and carbidopa. However, the systemic exposure (AUC) of levodopa was increased by 55% in elderly subjects compared to young subjects. Based on another study in forty patients with Parkinson's disease, there was a correlation between age of patients and the increase of AUC of levodopa following administration of levodopa and an inhibitor of peripheral dopa decarboxylase. AUC of levodopa was increased by 28% in elderly patients (≥ 65 years)

compared to young patients (< 65 years). Additionally, mean value of C_{max} for levodopa was increased by 24% in elderly patients (≥ 65 years) compared to young patients (< 65 years) [*see Use in Specific Populations (8.5)*].

The AUC of carbidopa was increased in elderly subjects (n=10, 65-76 years) by 29% compared to young subjects (n=24, 23-64 years) following IV administration of 50 mg levodopa with carbidopa (50 mg). This increase is not considered to have a clinically significant impact.

13 NONCLINICAL TOXICOLOGY

13.1 Carcinogenesis, Mutagenesis, Impairment of Fertility

Carcinogenesis

In rats, oral administration of carbidopa-levodopa for two years resulted in no evidence of carcinogenicity.

Impairment of Fertility

In reproduction studies, no effects on fertility were observed in rats receiving carbidopa-levodopa.

14 CLINICAL STUDIES

The efficacy of DHIVY is based upon bioavailability studies comparing DHIVY to an immediate-release tablet containing 25 mg of carbidopa and 100 mg of levodopa [*see Clinical Pharmacology (12.3)*].

16 HOW SUPPLIED/STORAGE AND HANDLING

16.1 How Supplied

DHIVY (carbidopa and levodopa) tablets are white to off-white tablets with functional scoring containing 25 mg of carbidopa and 100 mg of levodopa. One side of each DHIVY tablet has 3 scores, with each segment containing 6.25 mg of carbidopa and 25 mg of levodopa (1:4 ratio). The unscored side of the tablet is debossed with logo "AV70I".

DHIVY is supplied as follows:

NDC75854-701-01 bottles of 100. Four copies of the Instructions for Use are included with the bottle, and additional copies, as needed, can be printed.

16.2 Storage and Handling

Store at 20°C to 25°C (68°F to 77°F); excursions permitted between 15°C to 30°C (59°F to 86°F) [*see USP Controlled Room Temperature*]. Store in a tightly closed container, protected from light and moisture.

Dispense in a light-resistant container.

17 PATIENT COUNSELING INFORMATION

Advise the patient to read the FDA-approved patient labeling (Instructions for Use).

Dosing Instructions

- It is important that DHIVY be taken at regular intervals according to the schedule outlined by their physician. Inform the patient not to change the prescribed dosage regimen and not to add any additional antiparkinson medications, including other carbidopa-levodopa preparations, without first consulting their physician. Advise patients to call their healthcare provider before stopping DHIVY. Discontinue DHIVY slowly. Tell patients to call their healthcare provider if they develop withdrawal symptoms such as fever and confusion [*see Dosage and Administration (2.2) and Warnings and Precautions (5.2)*] .
- Advise patients to swallow DHIVY with or without food. If the patient has difficulty swallowing the tablet due to its size, inform the patient that the tablet can be broken at the score lines [*see Dosage and Administration (2.3)*] .
- Advise the patient that occasionally, dark color (red, brown, or black) may appear in saliva, urine, or sweat after ingestion of DHIVY. Although the color appears to be clinically insignificant, garments may become discolored.
- Advise the patient that a change in diet to foods that are high in protein or taking iron salts or multivitamins with iron may delay the absorption of levodopa and may reduce the amount taken up in the circulation. Excessive acidity also delays stomach emptying, thus delaying the absorption of levodopa.

Falling Asleep

Advise patients that certain side effects such as sleepiness and dizziness that have been reported with DHIVY may affect some patients' ability to drive and operate machinery safely [*see Warnings and Precautions (5.1) and Adverse Reactions (6)*].

Hallucinations and Psychosis

Inform patients that hallucinations can occur with levodopa products [*see Warnings and Precautions (5.4)*].

Impulse Control Disorder

Inform patients of the potential for experiencing intense urges to gamble, increased sexual urges, and other intense urges and the inability to control these urges while taking one or more of the medications that increase central dopaminergic tone, that are generally used for the treatment of Parkinson's disease [*see Warnings and Precautions (5.5)*].

Dyskinesia

Instruct patients to notify their healthcare provider if abnormal involuntary movements appear or get worse during treatment with DHIVY [*see Warnings and Precautions (5.6)*].

Pregnancy and Breastfeeding

Advise patients to notify their healthcare provider if they become pregnant or intend to become pregnant during DHIVY therapy [*see Use in Specific Populations (8.1)*].

Advise female patients to notify their physicians if they intend to breastfeed or are breastfeeding an infant [*see Use in Specific Populations (8.2)*].

Distributed by:

Avion Pharmaceuticals, LLC

Alpharetta, GA, 30005 USA

L-0344 Rev. 0921-01

U.S. Patent 11,033,521

INSTRUCTIONS FOR USE

DHIVY (DHI-VEE)

(carbidopa and levodopa)

tablets, for oral use

This Instructions for Use contains information on how to take DHIVY.

Important Information You Need to Know Before Taking DHIVY





- Take DHIVY exactly as your healthcare provider tells you to take it. Your healthcare provider may increase your dose every day or every other day as needed until you reach the recommended dosage.
- Take DHIVY by mouth, with or without food.
- 1 whole DHIVY tablet contains 25 mg of carbidopa and 100 mg of levodopa.
- 1 DHIVY tablet has 3 grooves (score lines) that can be split into 4 segments so that you can take your prescribed dose. (See the DHIVY tablet image below.)
- If you have trouble swallowing the DHIVY tablet, you can break the tablet at the groove (score lines). Then take the number of segments that equal your prescribed dose. Each segment of 1 DHIVY tablet contains 6.25 mg of carbidopa and 25 mg of levodopa. (See Table 1 below to help determine how many tablet segments to take.)
- Do not change your dose or take any additional antiparkinson medicines (including medicines that contain carbidopa and levodopa) without first talking to your healthcare provider. If you are not sure if you take these medicines, ask your healthcare provider.
- Call your healthcare provider before you stop taking DHIVY. Call your healthcare provider if you develop withdrawal symptoms such as fever and confusion.
- Changing your diet to highly acidic foods or foods that are high in protein or taking iron salts or multivitamins with iron may affect how DHIVY works. If you are not sure if you are on any of these diets or are taking any of these medicines, ask your healthcare provider.

DHIVY Tablet

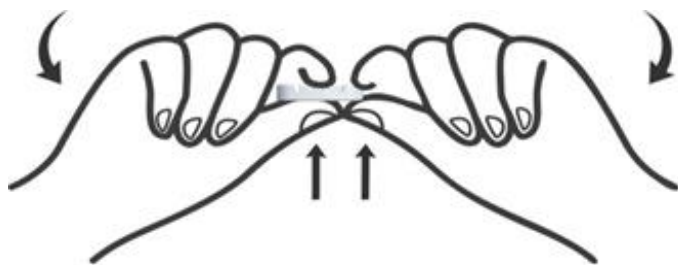


Dhivy tablet has four segments. Each segment contains 6.25 mg of carbidopa and 25 mg of levodopa. The top layer of the tablet (above the dotted line) contains the carbidopa and levodopa. The bottom layer of the tablet (below the dotted line) contains the inactive ingredients.

Table 1: DHIVY Segment Description

Number of DHIVY Segments	Image of number of Dhivy segments	Strength of Carbidopa/Levodopa
1		6.25 mg / 25 mg
2		12.5 mg / 50 mg
3		18.75 mg / 75 mg
4 (whole tablet)		25 mg / 100 mg

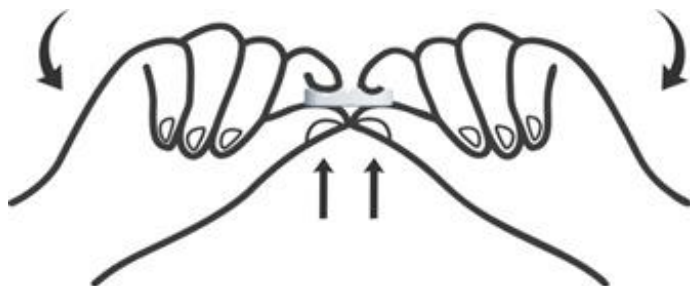
How to take 3 Segments (18.75 mg of carbidopa and 75 mg of levodopa)



18.75 mg carbidopa/
75 mg levodopa

- Hold the DHIVY tablet with 1 hand on each side.
- Carefully grasp 1 segment on either side and break the tablet at the groove to get 3 segments containing 18.75 mg of carbidopa and 75 mg of levodopa and 1 segment containing 6.25 mg of carbidopa and 25 mg of levodopa.
- Put the remaining 1 segment back into the container and close tightly.

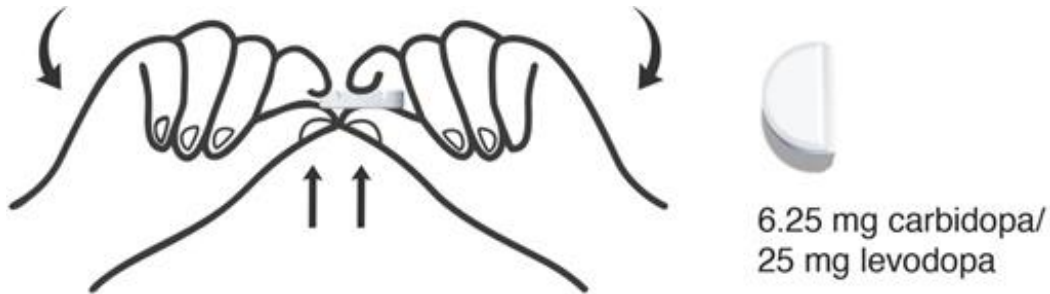
How to take 2 Segments (12.5 mg of carbidopa and 50 mg of levodopa)



12.5 mg carbidopa/
50 mg levodopa

- Hold the DHIVY tablet with 1 hand on each side.
- Carefully grasp 2 segments and break the tablet in half at the groove in the middle to get 2 segments containing 12.5 mg of carbidopa and 50 mg of levodopa each.
- Put the remaining 2 segments back into the container and close tightly.

How to take 1 Segment (6.25 mg of carbidopa and 25 mg of levodopa)



- Hold the DHIVY tablet with 1 hand on each side.
- Carefully grasp 1 segment on either side and break the tablet at the groove to get 1 segment containing 6.25 mg of carbidopa and 25 mg of levodopa and 3 segments containing 18.75 mg of carbidopa and 75 mg of levodopa.
- Put the remaining 3 segments back into the container and close tightly.

Storing DHIVY

- Store DHIVY at room temperature between 68°F to 77°F (20°C to 25°C).
- Store DHIVY in a tightly closed container to protect it from light and moisture.
- **Keep DHIVY and all medicines out of the reach of children.**

To report side effects, call Avion Pharmaceuticals at 888-612-8466 or FDA at 1-800-FDA-1088 or www.fda.gov/medwatch.

Distributed by:

Avion Pharmaceuticals, LLC

Alpharetta, GA, 30005 USA

1-888-612-8466

This Instructions for Use has been approved by the U.S. Food and Drug Administration.

Approved: 06/2022

PACKAGE LABEL.PRINCIPAL DISPLAY PANEL

NDC 75854-701-01

RX Only



DhivyTM
(carbidopa/levodopa)

Tablets 25 mg/100 mg

Each tablet contains 25 mg carbidopa
(anhydrous equivalent) and 100 mg
levodopa.

100 Tablets



GTIN 0031234500000
LOT 012345
EXP DEC2023
SN 01234567890123

Each tablet segment contains 6.25 mg carbidopa and 25 mg
levodopa

RECOMMENDED DOSAGE See prescribing information.
Dispense in a tightly closed, light-resistant container.
This is a bulk package and not intended for dispensing.

STORAGE Store at 20°C - 25°C (68°F - 77°F); excursions
permitted to 15°C - 30°C (59°F - 86°F).

[See USP Controlled
Room Temperature.] Store in a
tightly closed container, protected
from light and moisture.

401050-01

MANUFACTURED FOR:

Avion
PHARMACEUTICALS
Alpharetta, GA 30005
1-888-61-AVON
L-0345 Rev 0222-02

DHIVY

carbidopa levodopa tablet

Product Information

Product Type	HUMAN PRESCRIPTION DRUG	Item Code (Source)	NDC:75854-701
Route of Administration	ORAL		

Active Ingredient/Active Moiety

Ingredient Name	Basis of Strength	Strength
CARBIDOPA (UNII: MNX7R8C5VO) (CARBIDOPA ANHYDROUS - UNII:KR87B45RGH)	CARBIDOPA ANHYDROUS	25 mg
LEVODOPA (UNII: 46627O600J) (LEVODOPA - UNII:46627O600J)	LEVODOPA	100 mg

Inactive Ingredients

Ingredient Name	Strength
MAGNESIUM STEARATE (UNII: 70097M6I30)	
MICROCRYSTALLINE CELLULOSE (UNII: OP1R32D61U)	
STARCH, CORN (UNII: O8232NY3SJ)	

Product Characteristics

Color	white (white to off-white)	Score	4 pieces
Shape	CAPSULE	Size	19mm
Flavor		Imprint Code	AV701
Contains			

Packaging

#	Item Code	Package Description	Marketing Start Date	Marketing End Date
1	NDC:75854-701-	100 in 1 BOTTLE; Type 0: Not a Combination	02/10/2022	

01	Product	02/10/2022	
Marketing Information			
Marketing Category	Application Number or Monograph Citation	Marketing Start Date	Marketing End Date
NDA	NDA214869	02/10/2022	

Labeler - Avion Pharmaceuticals, LLC (040348516)

Registrant - Avion Pharmaceuticals, LLC (040348516)

Revised: 1/2024

Avion Pharmaceuticals, LLC