

EPLERENONE- eplerenone tablet, film coated

American Health Packaging

HIGHLIGHTS OF PRESCRIBING INFORMATION

These highlights do not include all the information needed to use EPLERENONE TABLETS safely and effectively. See full prescribing information for EPLERENONE TABLETS.

EPLERENONE tablets, for oral use

Initial U.S. Approval: 2002

INDICATIONS AND USAGE

Eplerenone Tablets are an aldosterone antagonist indicated for:

- the treatment of hypertension, to lower blood pressure. Lowering blood pressure reduces the risk of fatal and nonfatal cardiovascular events, primarily strokes and myocardial infarctions (1.2).

DOSAGE AND ADMINISTRATION

Hypertension: 50 mg once daily, For inadequate response, increase to 50 mg twice daily. Higher dosages are not recommended. (2.2)

For all patients:

Measure serum potassium before starting Eplerenone Tablets and periodically thereafter. (2.3)

DOSAGE FORMS AND STRENGTHS

Tablets: 25 mg, 50 mg (3)

CONTRAINDICATIONS

For all patients:

- Serum potassium >5.5 mEq/L at initiation (4)
- Creatinine clearance \leq 30 mL/min (4)
- Concomitant use with strong CYP3A inhibitors (4, 7.1)

For the treatment of hypertension:

- Type 2 diabetes with microalbuminuria (4)
- Serum creatinine >2.0 mg/dL in males, >1.8 mg/dL in females (4)
- Creatinine clearance <50 mL/min (4)
- Concomitant use of potassium supplements or potassium-sparing diuretics (4)

WARNINGS AND PRECAUTIONS

- Hyperkalemia: Patients with decreased renal function, diabetes, proteinuria or patients who are taking ARBs, NSAIDs or moderate CYP3A inhibitors are at increased risk. Monitor serum potassium levels and adjust dose as needed. (5.1)

ADVERSE REACTIONS

Hypertension: In clinical studies, adverse reactions with eplerenone were uncommon. (6.1)

To report SUSPECTED ADVERSE REACTIONS, contact Breckenridge Pharmaceutical, Inc. at 1-800-367-3395 or FDA at 1-800-FDA-1088 or www.fda.gov/medwatch.

DRUG INTERACTIONS

- CYP3A Inhibitors: In patients with hypertension initiate at 25 mg once daily. For inadequate blood pressure response, dosing may be increased to a maximum of 25 mg twice daily. (2.4, 7.1, 12.3)

See 17 for PATIENT COUNSELING INFORMATION.

Revised: 6/2018

FULL PRESCRIBING INFORMATION: CONTENTS*

1 INDICATIONS AND USAGE

1.2 Hypertension

2 DOSAGE AND ADMINISTRATION

- 2.2 Hypertension
- 2.3 Recommended Monitoring
- 2.4 Dose Modification for Use with Moderate CYP3A Inhibitors

3 DOSAGE FORMS AND STRENGTHS

4 CONTRAINDICATIONS

For All Patients

For Patients Treated for Hypertension

5 WARNINGS AND PRECAUTIONS

- 5.1 Hyperkalemia

6 ADVERSE REACTIONS

- 6.1 Clinical Trials Experience
- 6.2 Postmarketing Experience
- 6.3 Clinical Laboratory Test Findings

7 DRUG INTERACTIONS

- 7.1 CYP3A Inhibitors
- 7.2 Angiotensin II Receptor Antagonists
- 7.3 Lithium
- 7.4 Nonsteroidal Anti-Inflammatory Drugs (NSAIDs)

8 USE IN SPECIFIC POPULATIONS

- 8.1 Pregnancy
- 8.2 Lactation
- 8.3 Females and Males of Reproductive Potential
- 8.4 Pediatric Use
- 8.5 Geriatric Use

10 OVERDOSAGE

11 DESCRIPTION

12 CLINICAL PHARMACOLOGY

- 12.1 Mechanism of Action
- 12.2 Pharmacodynamics
- 12.3 Pharmacokinetics

13 NONCLINICAL TOXICOLOGY

- 13.1 Carcinogenesis, Mutagenesis, Impairment of Fertility

14 CLINICAL STUDIES

- 14.2 Hypertension

16 HOW SUPPLIED/STORAGE AND HANDLING

17 PATIENT COUNSELING INFORMATION

* Sections or subsections omitted from the full prescribing information are not listed.

FULL PRESCRIBING INFORMATION

1 INDICATIONS AND USAGE

1.2 Hypertension

Eplerenone Tablets are indicated for the treatment of hypertension, to lower blood pressure. Lowering blood pressure reduces the risk of fatal and nonfatal cardiovascular

(CV) events, primarily strokes and MI. These benefits have been seen in controlled trials of antihypertensive drugs from a wide variety of pharmacologic classes.

Control of high blood pressure should be part of comprehensive CV risk management, including, as appropriate, lipid control, diabetes management, antithrombotic therapy, smoking cessation, exercise, and limited sodium intake. Many patients will require more than one drug to achieve blood pressure goals. For specific advice on goals and management, see published guidelines, such as those of the National High Blood Pressure Education Program's Joint National Committee on Prevention, Detection, Evaluation, and Treatment of High Blood Pressure (JNC).

Numerous antihypertensive drugs, from a variety of pharmacologic classes and with different mechanisms of action, have been shown in randomized controlled trials to reduce CV morbidity and mortality, and it can be concluded that it is blood pressure reduction, and not some other pharmacologic property of the drugs, that is largely responsible for those benefits. The largest and most consistent CV outcome benefit has been a reduction in the risk of stroke, but reductions in MI and CV mortality also have been seen regularly.

Elevated systolic or diastolic pressure causes increased CV risk, and the absolute risk increase per mmHg is greater at higher blood pressures, so that even modest reductions of severe hypertension can provide substantial benefit. Relative risk reduction from blood pressure reduction is similar across populations with varying absolute risk, so the absolute benefit is greater in patients who are at higher risk independent of their hypertension (for example, patients with diabetes or hyperlipidemia), and such patients would be expected to benefit from more aggressive treatment to a lower blood pressure goal.

Some antihypertensive drugs have smaller blood pressure effects (as monotherapy) in black patients, and many antihypertensive drugs have additional approved indications and effects (e.g., on angina, heart failure, or diabetic kidney disease). These considerations may guide selection of therapy.

2 DOSAGE AND ADMINISTRATION

2.2 Hypertension

The recommended starting dose of Eplerenone Tablets is 50 mg administered once daily. The full therapeutic effect of Eplerenone Tablets is apparent within 4 weeks. For patients with an inadequate blood pressure response to 50 mg once daily increase the dosage of eplerenone tablets to 50 mg twice daily. Higher dosages of Eplerenone Tablets are not recommended because they have no greater effect on blood pressure than 100 mg and are associated with an increased risk of hyperkalemia [*see Clinical Studies (14.2)*].

2.3 Recommended Monitoring

Measure serum potassium before initiating eplerenone tablets therapy, within the first week, and at one month after the start of treatment or dose adjustment. Assess serum potassium periodically thereafter.

Check serum potassium and serum creatinine within 3-7 days of a patient initiating a moderate CYP3A inhibitor, angiotensin-II blockers or non-steroidal-anti-inflammatories.

2.4 Dose Modification for Use with Moderate CYP3A Inhibitors

In patients with hypertension receiving a moderate CYP3A inhibitor, initiate at 25 mg once daily. For inadequate blood pressure response, dosing may be increased to a maximum of 25 mg twice daily [see *Drug Interactions (7.1)*].

3 DOSAGE FORMS AND STRENGTHS

- 25 mg tablets: yellowish red color diamond shaped biconvex film coated tablets, debossed with "E" on one side and "25" on other side
- 50 mg tablets: yellowish red color diamond shaped biconvex film coated tablets, debossed with "E" on one side and "50" on other side

4 CONTRAINDICATIONS

For All Patients

Eplerenone Tablets are contraindicated in all patients with:

- serum potassium >5.5 mEq/L at initiation,
- creatinine clearance \leq 30 mL/min, or
- concomitant administration of strong CYP3A inhibitors (e.g., ketoconazole, itraconazole, nefazodone, troleandomycin, clarithromycin, ritonavir, and nelfinavir) [see *Drug Interactions (7.1)*, *Clinical Pharmacology (12.3)*].

For Patients Treated for Hypertension

Eplerenone Tablets are contraindicated for the treatment of hypertension in patients with:

- type 2 diabetes with microalbuminuria,
- serum creatinine >2.0 mg/dL in males or >1.8 mg/dL in females,
- creatinine clearance <50 mL/min, or
- concomitant administration of potassium supplements or potassium-sparing diuretics (e.g., amiloride, spironolactone, or triamterene) [see *Warnings and Precautions (5.1)*, *Adverse Reactions (6.2)*, *Drug Interactions (7)*, and *Clinical Pharmacology (12.3)*].

5 WARNINGS AND PRECAUTIONS

5.1 Hyperkalemia

The risk of hyperkalemia is higher in patients with impaired renal function, proteinuria, diabetes and those concomitantly treated with ARBs, NSAIDs and moderate CYP3A inhibitors. Minimize the risk of hyperkalemia with proper patient selection and monitoring. [see *Dosage and Administration (2)*, *Contraindications (4)*, *Adverse Reactions (6.2)*, and *Drug Interactions (7)*]. Monitor patients for the development of hyperkalemia until the effect of eplerenone is established. Patients who develop hyperkalemia (5.5-5.9 mEq/L) may continue eplerenone therapy with proper dose adjustment. Dose reduction decreases potassium levels. Patients on moderate CYP3A inhibitors that cannot be avoided should have their dose of eplerenone reduced. [see *Drug Interactions (7.2)*].

6 ADVERSE REACTIONS

The following adverse reactions are discussed in greater detail in other sections of the labeling:

- Hyperkalemia [see Warnings and Precautions (5.1)]

6.1 Clinical Trials Experience

Because clinical trials are conducted under widely varying conditions, adverse reaction rates observed in the clinical trials of a drug cannot be directly compared to rates in clinical trials of another drug and may not reflect the rates observed in practice.

Hypertension

Eplerenone has been evaluated for safety in 3091 patients treated for hypertension. A total of 690 patients were treated for over 6 months and 106 patients were treated for over 1 year.

In placebo-controlled studies, the overall rates of adverse events were 47% with Eplerenone Tablets and 45% with placebo. Adverse events occurred at a similar rate regardless of age, gender, or race. Therapy was discontinued due to an adverse event in 3% of patients treated with Eplerenone Tablets and 3% of patients given placebo. The most common reasons for discontinuation of Eplerenone Tablets were headache, dizziness, angina pectoris/MI, and increased GGT.

Gynecomastia and abnormal vaginal bleeding were reported with eplerenone but not with placebo. The rates increased with increasing duration of therapy.

6.2 Postmarketing Experience

The following adverse reactions have been identified during postapproval use of eplerenone. Because these reactions are reported voluntarily from a population of uncertain size, it is not always possible to reliably estimate their frequency or establish a causal relationship to drug exposure.

Skin: angioneurotic edema, rash

6.3 Clinical Laboratory Test Findings

Hypertension

Potassium: In placebo-controlled fixed-dose studies, the mean increases in serum potassium were dose-related and are shown in Table 4 along with the frequencies of values >5.5 mEq/L.

Table 4. Increases in Serum Potassium in the Placebo-Controlled, Fixed-Dose Hypertension Studies of Eplerenone Tablets

		Mean Increase mEq/L	% >5.5 mEq/L
Daily Dosage	n		
Placebo	194	0	1
25	97	0.08	0

50	245	0.14	0
100	193	0.09	1

7 DRUG INTERACTIONS

7.1 CYP3A Inhibitors

Eplerenone metabolism is predominantly mediated via CYP3A. Do not use eplerenone with drugs that are strong inhibitors of CYP3A [see *Contraindications (4) and Clinical Pharmacology (12.3)*].

In patients with hypertension taking a moderate CYP3A inhibitor, initiate at 25 mg once daily. For inadequate blood pressure response, dosing may be increased to a maximum of 25 mg twice daily [see *Dosage and Administration (2.3, 2.4) and Clinical Pharmacology (12.3)*].

7.2 Angiotensin II Receptor Antagonists

The risk of hyperkalemia increase when eplerenone is used in combination with an ARB. A close monitoring of serum potassium and renal function is recommended, especially in patients at risk for impaired renal function, e.g., the elderly [see *Warnings and Precautions (5.1)*].

7.3 Lithium

A drug interaction study of eplerenone with lithium has not been conducted. Lithium toxicity has been reported in patients receiving lithium concomitantly with diuretics. Serum lithium levels should be monitored frequently if Eplerenone Tablets are administered concomitantly with lithium.

7.4 Nonsteroidal Anti-Inflammatory Drugs (NSAIDs)

A drug interaction study of eplerenone with an NSAID has not been conducted. The administration of other potassium-sparing antihypertensives with NSAIDs has been shown to reduce the antihypertensive effect in some patients and result in severe hyperkalemia in patients with impaired renal function. Therefore, when eplerenone and NSAIDs are used concomitantly, monitor blood pressure and serum potassium levels.

8 USE IN SPECIFIC POPULATIONS

8.1 Pregnancy

Risk Summary

The available data from published case reports on eplerenone use during pregnancy are insufficient to establish a drug-associated risk of major birth defects, miscarriage, adverse maternal or fetal outcomes (see *Clinical Considerations*). In animal studies, no adverse developmental effects were observed when eplerenone was administered to pregnant rats and rabbits during organogenesis at exposures 32 and 31 times, respectively the human exposure at the 100 mg/day therapeutic dose.

The estimated background risk of major birth defects and miscarriage for the indicated population are unknown. In the US general population, the estimated background risk of major birth defects and miscarriage in clinically recognized pregnancies is 2-4% and 15-20%, respectively.

Clinical Considerations

Disease-associated maternal and/or embryo/fetal risk

Hypertension in pregnancy increases the maternal risk for pre-eclampsia, gestational diabetes, premature delivery, and delivery complications (e.g., need for cesarean section, and post-partum hemorrhage). Hypertension increases the fetal risk for intrauterine growth restriction and intrauterine death. Pregnant women with hypertension should be carefully monitored and managed accordingly.

Pregnant women with heart failure are at increased risk for preterm birth. Stroke volume and heart rate increase during pregnancy, increasing cardiac output, especially during the first trimester. Clinical classification of heart disease may worsen with pregnancy and lead to maternal death. Closely monitor pregnant patients for destabilization of their heart failure.

Data

Animal Data

Embryo-fetal development studies were conducted with doses up to 1000 mg/kg/day in rats and 300 mg/kg/day in rabbits (exposures up to 32 and 31 times the human AUC for the 100 mg/day therapeutic dose, respectively) administered during organogenesis. No teratogenic effects were seen in rats or rabbits, although decreased rat fetal weights were observed, and decreased body weight in maternal rabbits and increased rabbit fetal resorptions and post-implantation loss were observed at the highest administered dosages.

In a pre- and postnatal development study pregnant rats were administered eplerenone at doses up to 1000 mg/kg/day from Gestation Day 6 through Lactation Day 20. Decreased pup weights were observed beginning at birth at 1000 mg/kg/day.

8.2 Lactation

Risk Summary

There are no human data available on whether eplerenone is present in human milk, or has effects on breastfed infants or on milk production. Eplerenone was present in the milk of lactating rats. When a drug is present in animal milk, it is likely that the drug will be present in human milk.

8.3 Females and Males of Reproductive Potential

Infertility

Based on animal data, use of eplerenone may compromise male fertility. In mature rats, male fertility was decreased with eplerenone exposure at 17 times the 100 mg/day human therapeutic dose. Reversibility of effects was not evaluated [*see Nonclinical Toxicology (13.1)*].

8.4 Pediatric Use

In a 10-week study of 304 hypertensive pediatric patients age 4 to 16 years treated with eplerenone up to 100 mg per day, doses that produced exposure similar to that in adults, eplerenone did not lower blood pressure effectively. In this study and in a 1-year pediatric safety study in 149 patients (age range 5 to 17 years), the incidence of reported adverse events was similar to that of adults.

Eplerenone has not been studied in hypertensive patients less than 4 years old because the study in older pediatric patients did not demonstrate effectiveness.

Eplerenone has not been studied in pediatric patients with heart failure.

8.5 Geriatric Use

Hypertension

Of the total number of subjects in clinical hypertension studies of Eplerenone Tablets, 1123 (23%) were 65 and over, while 212 (4%) were 75 and over. No overall differences in safety or effectiveness were observed between elderly subjects and younger subjects, however due to age-related decreases in creatine clearance, the risk of hyperkalemia may be increased [see *Warnings and Precautions (5.1)*].

10 OVERDOSAGE

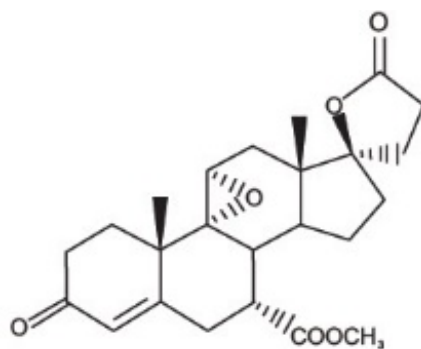
No cases of human overdosage with eplerenone have been reported. Lethality was not observed in mice, rats, or dogs after single oral doses that provided C_{max} exposures at least 25 times higher than in humans receiving eplerenone 100 mg/day. Dogs showed emesis, salivation, and tremors at a C_{max} 41 times the human therapeutic C_{max} , progressing to sedation and convulsions at higher exposures.

The most likely manifestation of human overdosage would be anticipated to be hypotension or hyperkalemia. Eplerenone cannot be removed by hemodialysis. Eplerenone has been shown to bind extensively to charcoal. If symptomatic hypotension should occur, supportive treatment should be instituted. If hyperkalemia develops, standard treatment should be initiated.

11 DESCRIPTION

Eplerenone Tablets contain eplerenone, a blocker of aldosterone binding at the mineralocorticoid receptor.

Eplerenone is chemically described as Pregn-4-ene-7,21-dicarboxylic acid, 9,11-epoxy-17-hydroxy-3-oxo-, γ -lactone, methyl ester, (7 α ,11 α , 17 α)-. Its empirical formula is C₂₄H₃₀O₆ and it has a molecular weight of 414.50. The structural formula of eplerenone is represented below:



eplerenone

Eplerenone is an odorless, white to off-white crystalline powder. It is very slightly soluble in water, with its solubility essentially pH-independent. The octanol/water partition coefficient of eplerenone is approximately 7.1 at pH 7.0.

Eplerenone Tablets for oral administration contain 25 mg or 50 mg of eplerenone and the following inactive ingredients: croscarmellose sodium, D&C Yellow No. 10, FD&C Yellow No. 6, hypromellose, lactose monohydrate, magnesium stearate, microcrystalline cellulose, polyethylene glycol, polysorbate 80, red iron oxide, sodium lauryl sulfate, talc, titanium dioxide and yellow iron oxide.

12 CLINICAL PHARMACOLOGY

12.1 Mechanism of Action

Eplerenone binds to the mineralocorticoid receptor and blocks the binding of aldosterone, a component of the renin-angiotensin-aldosterone-system (RAAS). Aldosterone synthesis, which occurs primarily in the adrenal gland, is modulated by multiple factors, including angiotensin II and non-RAAS mediators such as adrenocorticotrophic hormone (ACTH) and potassium. Aldosterone binds to mineralocorticoid receptors in both epithelial (e.g., kidney) and nonepithelial (e.g., heart, blood vessels, and brain) tissues and increases blood pressure through induction of sodium reabsorption and possibly other mechanisms.

Eplerenone has been shown to produce sustained increases in plasma renin and serum aldosterone, consistent with inhibition of the negative regulatory feedback of aldosterone on renin secretion. The resulting increased plasma renin activity and aldosterone circulating levels do not overcome the effects of eplerenone.

Eplerenone selectively binds to human mineralocorticoid receptors relative to its binding to recombinant human glucocorticoid, progesterone, and androgen receptors.

12.2 Pharmacodynamics

There was no significant change in average heart rate among patients treated with eplerenone in the combined clinical studies. No consistent effects of eplerenone on heart rate, QRS duration, or PR or QT interval were observed in 147 normal subjects evaluated for electrocardiographic changes during pharmacokinetic studies.

12.3 Pharmacokinetics

Eplerenone is cleared predominantly by cytochrome P450 (CYP) 3A4 metabolism, with an elimination half-life of 3 to 6 hours. Steady state is reached within 2 days. Absorption is not affected by food. Inhibitors of CYP3A (e.g., ketoconazole, saquinavir) increase blood levels of eplerenone.

Absorption and Distribution

Mean peak plasma concentrations of eplerenone are reached approximately 1.5 to 2 hours following oral administration. Absorption is not affected by food. The absolute bioavailability of eplerenone is 69% following administration of a 100 mg oral tablet. Both peak plasma levels (C_{max}) and area under the curve (AUC) are dose proportional for doses of 25 mg to 100 mg and less than proportional at doses above 100 mg. Upon repeat dosing, steady state levels are reached within 2 days.

The plasma protein binding of eplerenone is about 50% and it is primarily bound to alpha 1-acid glycoproteins. The apparent volume of distribution at steady state ranged from 42 to 90 L. Eplerenone does not preferentially bind to red blood cells.

Metabolism and Excretion

Eplerenone metabolism is primarily mediated via CYP3A4. No active metabolites of eplerenone have been identified in human plasma.

Less than 5% of an eplerenone dose is recovered as unchanged drug in the urine and feces. Following a single oral dose of radiolabeled drug, approximately 32% of the dose was excreted in the feces and approximately 67% was excreted in the urine. The elimination half-life of eplerenone is approximately 3 to 6 hours. The apparent plasma clearance is approximately 10 L/hr.

Age, Gender, and Race

The pharmacokinetics of eplerenone at a dose of 100 mg once daily has been investigated in the elderly (≥ 65 years), in males and females, and in Blacks. At steady state, elderly subjects had increases in C_{max} (22%) and AUC (45%) compared with younger subjects (18 to 45 years). The pharmacokinetics of eplerenone did not differ significantly between males and females. At steady state, C_{max} was 19% lower and AUC was 26% lower in Blacks [see *Dosage and Administration (2.4) and Use in Specific Populations (8.5)*].

Renal Impairment

The pharmacokinetics of eplerenone was evaluated in patients with varying degrees of renal impairment and in patients undergoing hemodialysis. Compared with control subjects, steady state AUC and C_{max} were increased by 38% and 24%, respectively, in patients with severe renal impairment and were decreased by 26% and 3%, respectively, in patients undergoing hemodialysis. No correlation was observed between plasma clearance of eplerenone and creatinine clearance. Eplerenone is not removed by hemodialysis [see *Warnings and Precautions (5.1)*].

Hepatic Impairment

The pharmacokinetics of eplerenone 400 mg has been investigated in patients with moderate (Child- Pugh Class B) hepatic impairment and compared with normal subjects.

Steady state C_{max} and AUC of eplerenone were increased by 3.6% and 42%, respectively.

Heart Failure

The pharmacokinetics of eplerenone 50 mg was evaluated in 8 patients with heart failure (NYHA classification II–IV) and 8 matched (gender, age, weight) healthy controls. Compared with the controls, steady state AUC and C_{max} in patients with stable heart failure were 38% and 30% higher, respectively.

Drug-Drug Interactions

Eplerenone is metabolized primarily by CYP3A4. Inhibitors of CYP3A cause increased exposure [see *Drug Interactions (7.1)*].

Drug-drug interaction studies were conducted with a 100 mg dose of eplerenone.

Following a single dose of eplerenone 100 mg and CYP3A inhibitor ketoconazole 200 mg twice a day, eplerenone's C_{max} was 1.7-fold and AUC was 5.4-fold compared with eplerenone alone.

Administration of eplerenone with moderate CYP3A inhibitors (e.g., erythromycin 500 mg BID, verapamil 240 mg once daily, saquinavir 1200 mg three times a day, fluconazole 200 mg once daily) resulted in increases in C_{max} of eplerenone ranging from 40% to 60% and AUC from 100% to 190%.

Grapefruit juice caused a 25% increase in exposure.

Eplerenone is not an inhibitor of CYP1A2, CYP3A4, CYP2C19, CYP2C9, or CYP2D6. Eplerenone did not inhibit the metabolism of amiodarone, amlodipine, astemizole, chlorzoxazone, cisapride, dexamethasone, dextromethorphan, diclofenac, 17 α -ethinyl estradiol, fluoxetine, losartan, lovastatin, mephobarbital, methylphenidate, methylprednisolone, metoprolol, midazolam, nifedipine, phenacetin, phenytoin, simvastatin, tolbutamide, triazolam, verapamil, or warfarin *in vitro*. Eplerenone is not a substrate or an inhibitor of P-Glycoprotein at clinically relevant doses.

No clinically significant drug-drug pharmacokinetic interactions were observed when eplerenone was administered with cisapride, cyclosporine, digoxin, glyburide, midazolam, oral contraceptives (norethindrone/ethinyl estradiol), simvastatin, or warfarin. St. John's wort (a CYP3A inducer) caused a small (about 30%) decrease in eplerenone AUC.

No significant changes in eplerenone pharmacokinetics were observed when eplerenone was administered with aluminum- and magnesium-containing antacids.

13 NONCLINICAL TOXICOLOGY

13.1 Carcinogenesis, Mutagenesis, Impairment of Fertility

Eplerenone was non-genotoxic in a battery of assays including *in vitro* bacterial mutagenesis (Ames test in *Salmonella* spp. and *E. Coli*), *in vitro* mammalian cell mutagenesis (mouse lymphoma cells), *in vitro* chromosomal aberration (Chinese hamster ovary cells), *in vivo* rat bone marrow micronucleus formation, and *in vivo/ex vivo* unscheduled DNA synthesis in rat liver.

There was no drug-related tumor response in heterozygous P53 deficient mice when tested for 6 months at dosages up to 1000 mg/kg/day (systemic AUC exposures up to 9 times the exposure in humans receiving the 100 mg/day therapeutic dose). Statistically significant increases in benign thyroid tumors were observed after 2 years in both male and female rats when administered eplerenone 250 mg/kg/day (highest dose tested) and in male rats only at 75 mg/kg/day. These dosages provided systemic AUC exposures approximately 2 to 12 times higher than the average human therapeutic exposure at 100 mg/day. Repeat dose administration of eplerenone to rats increases the hepatic conjugation and clearance of thyroxin, which results in increased levels of TSH by a compensatory mechanism. Drugs that have produced thyroid tumors by this rodent-specific mechanism have not shown a similar effect in humans.

Male rats treated with eplerenone at 1000 mg/kg/day for 10 weeks (AUC 17 times that at the 100 mg/day human therapeutic dose) had decreased weights of seminal vesicles and epididymides and slightly decreased fertility. Dogs administered eplerenone at dosages of 15 mg/kg/day and higher (AUC 5 times that at the 100 mg/day human therapeutic dose) had dose-related prostate atrophy. The prostate atrophy was reversible after daily treatment for 1 year at 100 mg/kg/day. Dogs with prostate atrophy showed no decline in libido, sexual performance, or semen quality. Testicular weight and histology were not affected by eplerenone in any test animal species at any dosage.

14 CLINICAL STUDIES

14.2 Hypertension

The safety and efficacy of Eplerenone Tablets have been evaluated alone and in combination with other antihypertensive agents in clinical studies of 3091 hypertensive patients. The studies included 46% women, 14% Blacks, and 22% elderly (age ≥ 65). The studies excluded patients with elevated baseline serum potassium (>5.0 mEq/L) and elevated baseline serum creatinine (generally >1.5 mg/dL in males and >1.3 mg/dL in females).

Two fixed-dose, placebo-controlled, 8- to 12-week monotherapy studies in patients with baseline diastolic blood pressures of 95 to 114 mm Hg were conducted to assess the antihypertensive effect of Eplerenone Tablets. In these two studies, 611 patients were randomized to Eplerenone Tablets and 140 patients to placebo. Patients received Eplerenone Tablets in doses of 25 mg to 400 mg daily as either a single daily dose or divided into two daily doses. The mean placebo-subtracted reductions in trough cuff blood pressure achieved by Eplerenone Tablets in these studies at doses up to 200 mg are shown in Figures 3 and 4.

Figure 3. Eplerenone Tablets Dose Response - Trough Cuff SBP Placebo-Subtracted Adjusted Mean Change from Baseline in Hypertension Studies

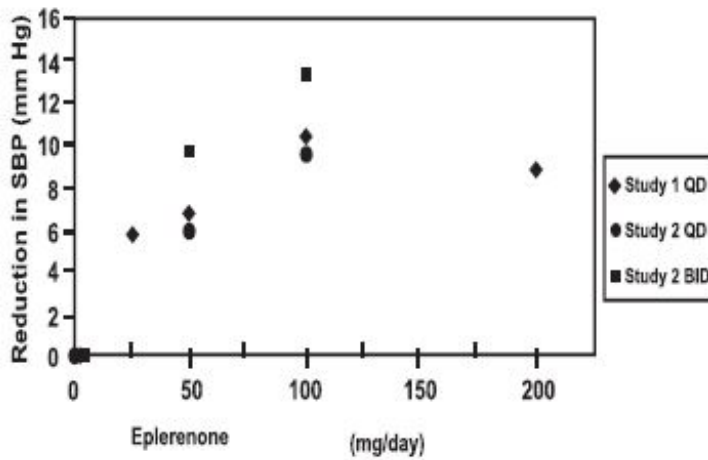
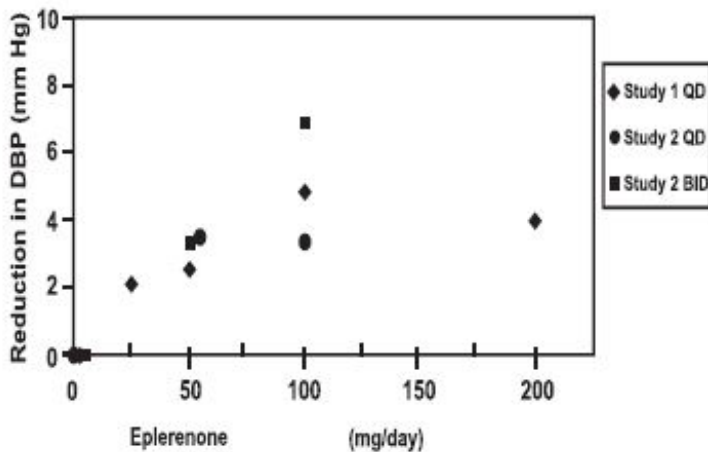


Figure 4. Eplerenone Tablets Dose Response - Trough Cuff DBP Placebo-Subtracted Adjusted Mean Change from Baseline in Hypertension Studies



Patients treated with Eplerenone Tablets 50 mg to 200 mg daily experienced significant decreases in sitting systolic and diastolic blood pressure at trough with differences from placebo of 6–13 mm Hg (systolic) and 3–7 mm Hg (diastolic). These effects were confirmed by assessments with 24-hour ambulatory blood pressure monitoring (ABPM). In these studies, assessments of 24-hour ABPM data demonstrated that Eplerenone Tablets, administered once or twice daily, maintained antihypertensive efficacy over the entire dosing interval. However, at a total daily dose of 100 mg, Eplerenone Tablets administered as 50 mg twice per day produced greater trough cuff (4/3 mm Hg) and ABPM (2/1 mm Hg) blood pressure reductions than 100 mg given once daily.

Blood pressure lowering was apparent within 2 weeks from the start of therapy with Eplerenone Tablets, with maximal antihypertensive effects achieved within 4 weeks. Stopping Eplerenone Tablets following treatment for 8 to 24 weeks in six studies did not lead to adverse event rates in the week following withdrawal of Eplerenone Tablets greater than following placebo or active control withdrawal. Blood pressures in patients not taking other antihypertensives rose 1 week after withdrawal of Eplerenone Tablets by about 6/3 mm Hg, suggesting that the antihypertensive effect of eplerenone was maintained through 8 to 24 weeks.

Blood pressure reductions with Eplerenone Tablets in the two fixed-dose monotherapy studies and other studies using titrated doses, as well as concomitant treatments, were not significantly different when analyzed by age, gender, or race with one exception. In a study in patients with low renin hypertension, blood pressure reductions in Blacks were smaller than those in whites during the initial titration period with eplerenone.

Eplerenone has been studied concomitantly with treatment with ARB, calcium channel blockers, and beta-blockers. When administered concomitantly with one of these drugs eplerenone tablets usually produced its expected antihypertensive effects.

16 HOW SUPPLIED/STORAGE AND HANDLING

Eplerenone Tablets, 25 mg, are yellowish red color diamond shaped biconvex film coated tablets, debossed with "E" on one side and "25" on other side.

Supplied as:

Unit dose packages of 30 (3 x 10) NDC 60687-451-21

Store at 25°C (77°F); excursions permitted to 15–30°C (59–86°F) [See USP Controlled Room Temperature].

FOR YOUR PROTECTION: Do not use if blister is torn or broken.

17 PATIENT COUNSELING INFORMATION

Advise patients receiving eplerenone:

- Not to use potassium supplements or salt substitutes containing potassium without consulting the prescribing physician [see *Warnings and Precautions (5.1)*].
- To call their physician if they experience dizziness, diarrhea, vomiting, rapid or irregular heartbeat, lower extremity edema, or difficulty breathing [see *Warnings and Precautions (5.1)*].

PACKAGING INFORMATION

American Health Packaging unit dose blisters (see How Supplied section) contain drug product from Breckenridge Pharmaceutical, Inc. as follows:
(25 mg / 30 UD) NDC 60687-451-21 packaged from NDC 51991-877

Distributed by:

American Health Packaging
Columbus, OH 43217

8445121/0419F

Package/Label Display Panel - Carton - 25 mg

NDC 60687-451-21

Eplerenone

Tablets

25 mg

30 Tablets (3 x 10)

Rx Only



NDC 60687-451-21

Eplerenone

Tablets

25 mg

30 Tablets (3 x 10)

Rx Only

Each Tablet Contains:

Eplerenone..... 25 mg

Usual Dosage: See full prescribing information.

Store at 20° to 25°C (68° to 77°F); excursions permitted between 15° to 30°C (59° to 86°F) [see USP Controlled Room Temperature].

FOR YOUR PROTECTION: Do not use if blister is torn or broken.

The drug product contained in this package is from NDC # 51991-877, Breckenridge Pharmaceutical, Inc.

Distributed by: American Health Packaging, Columbus, Ohio 43217

Scan for current Prescribing Information →



745121
0445121/0724

NDC 60687- 451-21

Eplerenone

Tablets

25 mg

30 Tablets (3 x 10)

Rx Only

Each Tablet Contains:

Eplerenone..... 25 mg

Usual Dosage: See full prescribing information.

Store at 20° to 25°C (68° to 77°F); excursions permitted between 15° to 30°C (59° to 86°F) [see USP Controlled Room Temperature].

FOR YOUR PROTECTION: Do not use if blister is torn or broken.

The drug product contained in this package is from NDC # 51991-877, Breckenridge Pharmaceutical, Inc.

Distributed by: American Health Packaging, Columbus, Ohio 43217

745121
0445121/0724

Package/Label Display Panel - Blister - 25 mg



Eplerenone
Tablet
25 mg

EPLERENONE			
eplerenone tablet, film coated			
Product Information			
Product Type	HUMAN PRESCRIPTION DRUG	Item Code (Source)	NDC:60687-451(NDC:51991-877)
Route of Administration	ORAL		
Active Ingredient/Active Moiety			
	Ingredient Name	Basis of Strength	Strength
	EPLERENONE (UNII: 6995V82D0B) (EPLERENONE - UNII:6995V82D0B)	EPLERENONE	25 mg

Inactive Ingredients

Ingredient Name	Strength
D&C YELLOW NO. 10 (UNII: 35SW5USQ3G)	
FD&C YELLOW NO. 6 (UNII: H77VEI93A8)	
HYPROMELLOSE 2910 (5 MPA.S) (UNII: R75537T0T4)	
LACTOSE MONOHYDRATE (UNII: EWQ57Q8I5X)	
MAGNESIUM STEARATE (UNII: 70097M6I30)	
CROSCARMELLOSE SODIUM (UNII: M28OL1HH48)	
MICROCRYSTALLINE CELLULOSE (UNII: OP1R32D61U)	
POLYETHYLENE GLYCOL, UNSPECIFIED (UNII: 3WJQ0SDW1A)	
POLYSORBATE 80 (UNII: 6OZP39ZG8H)	
FERRIC OXIDE RED (UNII: 1K09F3G675)	
SODIUM LAURYL SULFATE (UNII: 368GB5141J)	
TALC (UNII: 7SEV7J4R1U)	
TITANIUM DIOXIDE (UNII: 15FIX9V2JP)	
FERRIC OXIDE YELLOW (UNII: EX438O2MRT)	

Product Characteristics

Color	yellow (yellowish red)	Score	no score
Shape	DIAMOND	Size	7mm
Flavor		Imprint Code	E;25
Contains			

Packaging

#	Item Code	Package Description	Marketing Start Date	Marketing End Date
1	NDC:60687-451-21	30 in 1 BOX, UNIT-DOSE	06/13/2019	
1	NDC:60687-451-11	1 in 1 BLISTER PACK; Type 0: Not a Combination Product		



Marketing Information

Marketing Category	Application Number or Monograph Citation	Marketing Start Date	Marketing End Date
ANDA	ANDA208283	06/13/2019	

Labeler - American Health Packaging (929561009)

Establishment

Name	Address	ID/FEI	Business Operations
American Health Packaging		929561009	repack(60687-451)

Revised: 8/2024

American Health Packaging