

# **NORMS HEMORRHOID- phenylephrine hydrochloride, witch hazel spray**

## **Totally Normal Company**

### **Norms Hemorrhoid Spray**

Phenylephrine HCl 0.25%, Witch Hazel 50%

Vasoconstrictor, Astringent

Temporarily reduces swelling associated with hemorrhoidal tissue. Temporary relief of anorectal itching and discomfort associated with hemorrhoids and other anorectal disorders.

#### **For external use only.**

**When using this product** avoid spraying in eyes, contents under pressure. Do not puncture or incinerate. Do not store at temperatures above 120F, do not exceed recommended daily dosage unless directed by a doctor, do not put this product in the rectum by using fingers or any mechanical device or applicator.

**Ask a doctor before use if you have** heart disease, high blood pressure, thyroid disease, diabetes, difficulty in urination due to enlargement of the prostate gland, presently taking a prescription for high blood pressure or depression.

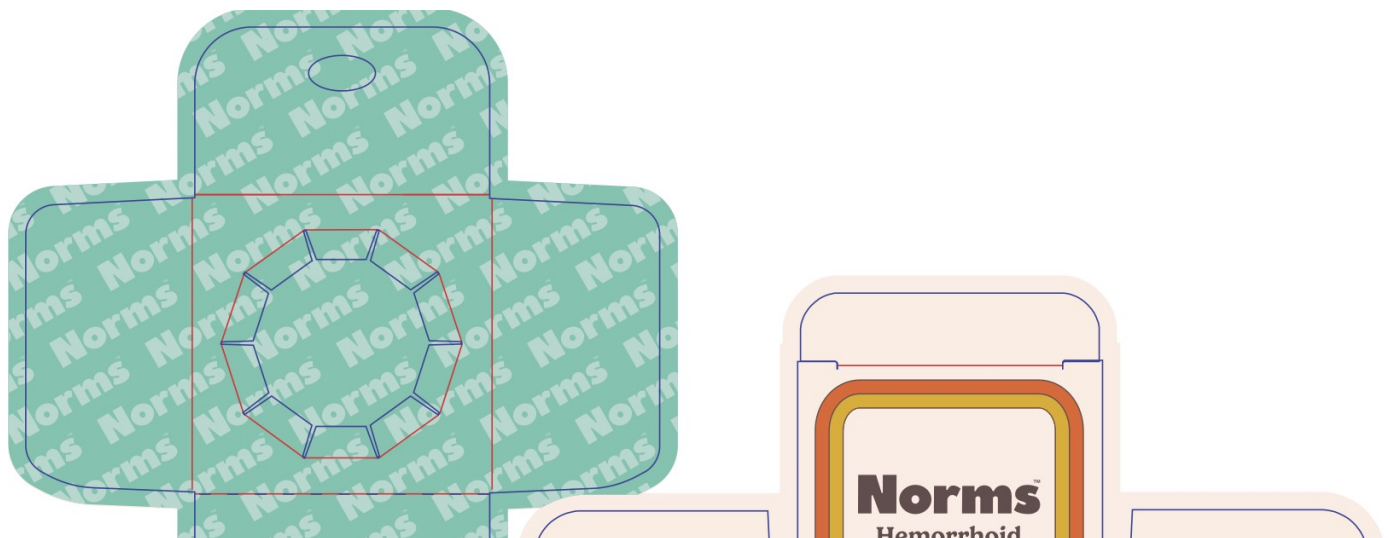
**Stop use and ask a doctor if** bleeding occurs, condition worsens or does not improve within 7 days.

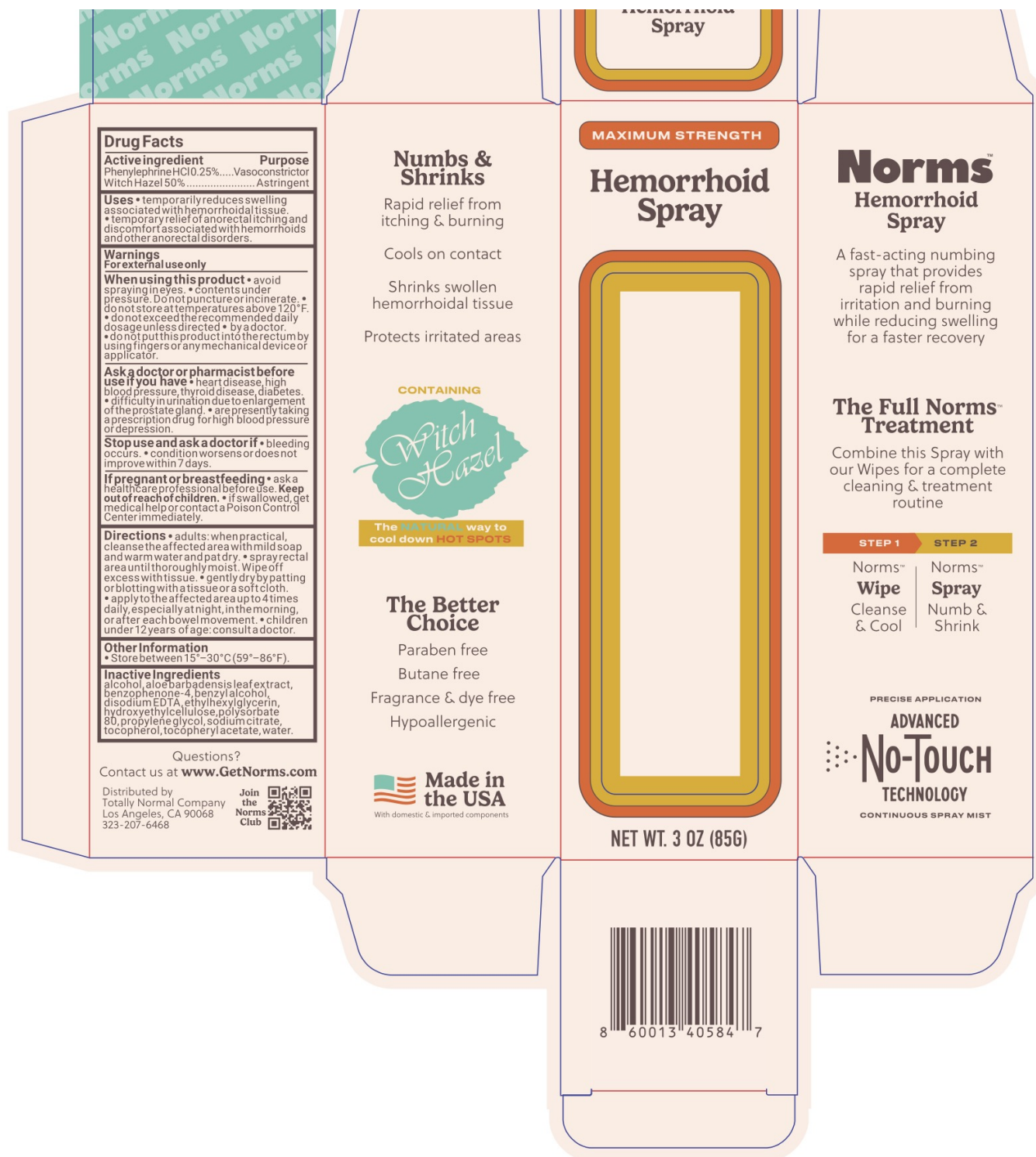
Ask a healthcare or professional before use.

If swallowed, seek medical help or contact a Poison Control Center immediately.

Adults: when practical, cleanse the affected area with mild soap and warm water and pat dry. Spray the rectal area until thoroughly moist. Wipe off excess with a tissue, gently dry by patting or blotting with a tissue or a soft cloth, apply to the affected area up to 4 times daily especially at night in the morning or after each bowel movement. For children under 12 years of age, consult a doctor.

Alcohol, Aloe Barbadensis Leaf Extract, Benzophenone-4, Benzyl Alcohol, Disodium EDTA, Ethylhexylglycerin, Hydroxyethylcellulose, Polysorbate 80, Propylene Glycol, Sodium Citrate, Tocopherol, Tocopheryl Acetate, Water.





## NORMS HEMORRHOID

phenylephrine hydrochloride, witch hazel spray

### Product Information

Product Type	HUMAN OTC DRUG	Item Code (Source)	NDC:85996-135
Route of Administration	TOPICAL		

### Active Ingredient/Active Moiety

Ingredient Name	Basis of Strength	Strength
WITCH HAZEL (UNII: 101I4J0U34) (WTCH HAZEL - UNII:101I4J0U34)	WTCH HAZEL	50 g in 100 g
PHENYLEPHRINE HYDROCHLORIDE (UNII: 04JA59TNSJ) (PHENYLEPHRINE - UNII:1WS297W6MV)	PHENYLEPHRINE	0.25 g in 100 g

Inactive Ingredients

Ingredient Name	Strength
SULISOBENZONE (UNII: 1W6L629B4K)	
ETHYLHEXYLGLYCERIN (UNII: 147D247K3P)	
PROPYLENE GLYCOL (UNII: 6DC9Q167V3)	
ALOE (UNII: V5VD430YW9)	
ALCOHOL (UNII: 3K9958V90M)	
BENZYL ALCOHOL (UNII: LKG8494WBH)	
EDETATE DISODIUM (UNII: 7FLD91C86K)	
HYDROXYETHYL CELLULOSE, UNSPECIFIED (UNII: T4V6TWG28D)	
SODIUM CITRATE (UNII: 1Q73Q2JULR)	
.ALPHA.-TOCOPHEROL ACETATE (UNII: 9E8X80D2L0)	
POLYSORBATE 80 (UNII: 6OZP39ZG8H)	
WATER (UNII: 059QF0KO0R)	
TOCOPHEROL (UNII: R0ZB2556P8)	

Packaging

#	Item Code	Package Description	Marketing Start Date	Marketing End Date
1	NDC:85996-135-03	1 in 1 CARTON	08/15/2025	
1		85 g in 1 CAN; Type 0: Not a Combination Product		

Marketing Information

Marketing Category	Application Number or Monograph Citation	Marketing Start Date	Marketing End Date
OTC Monograph Drug	M015	08/15/2025	

Labeler - Totally Normal Company (138411054)

Registrant - Derma Care Research Labs (116817470)

Establishment

Name	Address	ID/FEI	Business Operations
Derma Care Research Labs		116817470	manufacture(85996-135)