

TEPEZZA- teprotumumab injection, powder, lyophilized, for solution
Horizon Therapeutics USA, Inc.

HIGHLIGHTS OF PRESCRIBING INFORMATION

These highlights do not include all the information needed to use TEPEZZA safely and effectively. See full prescribing information for TEPEZZA.

TEPEZZA (teprotumumab-trbw) for injection, for intravenous use
Initial U.S. Approval: 2020

----- **INDICATIONS AND USAGE** -----

TEPEZZA is an insulin-like growth factor-1 receptor inhibitor indicated for the treatment of Thyroid Eye Disease (1)

----- **DOSAGE AND ADMINISTRATION** -----

- Initiate dosing with 10 mg/kg for first infusion, followed by 20 mg/kg every 3 weeks for 7 additional infusions (2.1)
- Administer TEPEZZA by intravenous infusion over 60 to 90 minutes (2.3)

----- **DOSAGE FORMS AND STRENGTHS** -----

For Injection: 500 mg lyophilized powder in a single-dose vial for reconstitution (3)

----- **CONTRAINDICATIONS** -----

None (4)

----- **WARNINGS AND PRECAUTIONS** -----

- Infusion reactions: If an infusion reaction occurs, interrupt or slow the rate of infusion and use appropriate medical management (5.1)
- Exacerbation of Preexisting Inflammatory Bowel Disease (IBD): Monitor patients with preexisting IBD for flare of disease; discontinue TEPEZZA if IBD worsens (5.2)
- Hyperglycemia: Monitor glucose levels in all patients; treat hyperglycemia with glycemetic control medications (5.3)

----- **ADVERSE REACTIONS** -----

Most common adverse reactions (incidence greater than 5%) are muscle spasm, nausea, alopecia, diarrhea, fatigue, hyperglycemia, hearing impairment, dry skin, dysgeusia and headache (6.1)

To report SUSPECTED ADVERSE REACTIONS, contact Horizon at 1-866-479-6742 or FDA at 1-800-FDA-1088 or www.fda.gov/medwatch.

----- **USE IN SPECIFIC POPULATIONS** -----

Females of Reproductive Potential: Appropriate forms of contraception should be implemented prior to initiation, during treatment and for 6 months following the last dose of TEPEZZA (8.3)

See 17 for PATIENT COUNSELING INFORMATION.

Revised: 1/2020

FULL PRESCRIBING INFORMATION: CONTENTS*

1 INDICATIONS AND USAGE

2 DOSAGE AND ADMINISTRATION

2.1 Recommended Dosing

2.2 Reconstitution and Preparation

2.3 Administration

3 DOSAGE FORMS AND STRENGTHS

4 CONTRAINDICATIONS

5 WARNINGS AND PRECAUTIONS

5.1 Infusion Reactions

5.2 Exacerbation of Preexisting Inflammatory Bowel Disease

5.3 Hyperglycemia

6 ADVERSE REACTIONS

6.1 Clinical Trials Experience

6.2 Immunogenicity

8 USE IN SPECIFIC POPULATIONS

8.1 Pregnancy

8.2 Lactation

8.3 Females and Males of Reproductive Potential

8.4 Pediatric Use

8.5 Geriatric Use

10 OVERDOSAGE

11 DESCRIPTION

12 CLINICAL PHARMACOLOGY

12.1 Mechanism of Action

12.2 Pharmacodynamics

12.3 Pharmacokinetics

13 NONCLINICAL TOXICOLOGY

13.1 Carcinogenesis, Mutagenesis, Impairment of Fertility

14 CLINICAL STUDIES

16 HOW SUPPLIED/STORAGE AND HANDLING

17 PATIENT COUNSELING INFORMATION

* Sections or subsections omitted from the full prescribing information are not listed.

FULL PRESCRIBING INFORMATION

1 INDICATIONS AND USAGE

TEPEZZA is indicated for the treatment of Thyroid Eye Disease.

2 DOSAGE AND ADMINISTRATION

2.1 Recommended Dosing

The recommended dose of TEPEZZA is an intravenous infusion of 10 mg/kg for the initial dose followed by an intravenous infusion of 20 mg/kg every three weeks for 7 additional infusions.

2.2 Reconstitution and Preparation

Step 1: Calculate the dose (mg) and determine the number of vials needed for the 10 or 20 mg/kg dosage based on patient weight. Each TEPEZZA vial contains 500 mg of the teprotumumab antibody.

Step 2: Using appropriate aseptic technique, reconstitute each TEPEZZA vial with 10 mL of Sterile Water for Injection, USP. Ensure that the stream of diluent is not directed onto the lyophilized powder, which has a cake-like appearance. Do not shake, but gently swirl the solution by rotating the vial until the lyophilized powder is dissolved. The reconstituted solution has a volume of 10.5 mL. Withdraw 10.5 mL of reconstituted solution to obtain 500 mg. After reconstitution, the final concentration is 47.6 mg/mL.

Step 3: The reconstituted TEPEZZA solution must be further diluted in 0.9% Sodium Chloride Injection, USP prior to infusion. To maintain a constant volume in the infusion bag, a sterile syringe and needle should be used to remove the volume equivalent to the amount of the reconstituted TEPEZZA solution to be placed into the infusion bag. Discard the 0.9% Sodium Chloride, USP volume withdrawn.

Step 4: Withdraw the required volume from the reconstituted TEPEZZA vial(s) based on the patient's

weight (in kg) and transfer into an intravenous bag containing 0.9% Sodium Chloride Solution, USP to prepare a diluted solution with a total volume of 100 mL (for less than 1800 mg dose) or 250 mL (for 1800 mg and greater dose). Mix diluted solution by gentle inversion. Do not shake.

The product does not contain any preservative. The combined storage time of reconstituted TEPEZZA solution in the vial and the diluted solution in the infusion bag containing 0.9% Sodium Chloride Injection, USP is a total of 4 hours at room temperature 20°C to 25°C (68°F to 77°F) or up to 48 hours under refrigerated conditions 2°C to 8°C (36°F to 46°F) protected from light. If refrigerated prior to administration, allow the diluted solution to reach room temperature prior to infusion.

Parenteral drug products should be inspected visually for particulate matter and discoloration prior to administration, whenever solution and container permit. Upon reconstitution, TEPEZZA is a colorless or slightly brown, clear to opalescent solution which is free of foreign particulate matter. Discard the solution if any particulate matter or discoloration are observed.

Do not freeze the reconstituted or diluted solution.

Discard vial(s) and all unused contents.

No incompatibilities between TEPEZZA and polyethylene (PE), polyvinyl chloride (PVC), polyurethane (PUR) or polyolefin (PO) bags and intravenous administration sets have been observed.

2.3 Administration

Administer the diluted solution intravenously over 90 minutes for the first two infusions. If well tolerated, the minimum time for subsequent infusions can be reduced to 60 minutes. If not well tolerated, the minimum time for subsequent infusions should remain at 90 minutes.

Do not administer as an intravenous push or bolus. TEPEZZA should not be infused concomitantly with other agents.

3 DOSAGE FORMS AND STRENGTHS

For injection (intravenous infusion): 500 mg of teprotumumab as a white to off-white lyophilized powder in a single-dose vial for reconstitution and dilution.

4 CONTRAINDICATIONS

None

5 WARNINGS AND PRECAUTIONS

5.1 Infusion Reactions

TEPEZZA may cause infusion reactions. Infusion reactions have been reported in approximately 4% of patients treated with TEPEZZA. Signs and symptoms of infusion-related reactions include transient increases in blood pressure, feeling hot, tachycardia, dyspnea, headache and muscular pain. Infusion reactions may occur during any of the infusions or within 1.5 hours after an infusion. Reported infusion reactions are usually mild or moderate in severity and can usually be successfully managed with corticosteroids and antihistamines. In patients who experience an infusion reaction, consideration should be given to pre-medicating with an antihistamine, antipyretic, corticosteroid and/or administering all subsequent infusions at a slower infusion rate.

5.2 Exacerbation of Preexisting Inflammatory Bowel Disease

TEPEZZA may cause an exacerbation of preexisting inflammatory bowel disease (IBD). Monitor patients with IBD for flare of disease. If IBD exacerbation is suspected, consider discontinuation of TEPEZZA.

5.3 Hyperglycemia

Hyperglycemia or increased blood glucose may occur in patients treated with TEPEZZA. In clinical trials, 10% of patients (two thirds of whom had pre-existing diabetes or impaired glucose tolerance) experienced hyperglycemia. Hyperglycemic events should be controlled with medications for glycemic control, if necessary.

Monitor patients for elevated blood glucose and symptoms of hyperglycemia while on treatment with TEPEZZA. Patients with pre-existing diabetes should be under appropriate glycemic control before receiving TEPEZZA.

6 ADVERSE REACTIONS

The following clinically significant adverse reactions are described elsewhere in the labeling:

- Infusion Reactions [see Warnings and Precautions (5.1)]
- Exacerbation of Inflammatory Bowel Disease [see Warnings and Precautions (5.2)]
- Hyperglycemia [see Warnings and Precautions (5.3)]

6.1 Clinical Trials Experience

Because clinical trials are conducted under widely varying conditions, adverse reaction rates observed in the clinical trials of a drug cannot be directly compared to rates in the clinical trials of another drug and may not reflect the rates observed in practice.

The safety of TEPEZZA was evaluated in two randomized, double-masked, placebo-controlled clinical studies (Study 1 [NCT:01868997] and Study 2 [NCT:03298867]) consisting of 170 patients with Thyroid Eye Disease (84 received TEPEZZA and 86 received placebo). Patients were treated with TEPEZZA (10 mg/kg for first infusion and 20 mg/kg for the remaining 7 infusions) or placebo given as an intravenous infusion every 3 weeks for a total of 8 infusions. The majority of patients completed 8 infusions (89% of TEPEZZA patients and 93% of placebo patients).

The most common adverse reactions ($\geq 5\%$) that occurred at greater incidence in the TEPEZZA group than in the control group during the treatment period of Studies 1 and 2 are summarized in Table 1.

Table 1. Adverse Reactions Occurring in 5% or More of Patients Treated with TEPEZZA and Greater Incidence than Placebo

Adverse Reactions	TEPEZZA N=84 N (%)	Placebo N=86 N (%)
Muscle spasms	21 (25%)	6 (7%)
Nausea	14 (17%)	8 (9%)
Alopecia	11 (13%)	7 (8%)
Diarrhea	10 (12%)	7 (8%)
Fatigue*	10 (12%)	6 (7%)
Hyperglycemia [†]	8 (10%)	1 (1%)
Hearing impairment [‡]	8 (10%)	0
Dysgeusia	7 (8%)	0
Headache	7 (8%)	6 (7%)
Dry skin	7 (8%)	0

* Fatigue includes asthenia

[†] Hyperglycemia includes blood glucose increase

[‡] Hearing impairment (includes deafness, eustachian tube dysfunction, hyperacusis, hypoacusis and autophony)

6.2 Immunogenicity

As with all therapeutic proteins, there is potential for immunogenicity. The detection of antibody formation is highly dependent on the sensitivity and specificity of the assay.

In a placebo-controlled study with TEPEZZA, 1 of 42 patients treated with placebo had detectable levels of antidrug antibodies in serum. In the same study, none of the 41 patients treated with TEPEZZA had detectable levels of antidrug antibodies in serum.

8 USE IN SPECIFIC POPULATIONS

8.1 Pregnancy

Risk Summary

Based on findings in animals and its mechanism of action inhibiting insulin-like growth factor 1 receptor (IGF-1R), TEPEZZA may cause fetal harm when administered to a pregnant woman. Adequate and well-controlled studies with TEPEZZA have not been conducted in pregnant women. There are insufficient data with TEPEZZA use in pregnant women to inform any drug associated risks for adverse developmental outcomes. In utero teprotumumab exposure in cynomolgus monkeys dosed once weekly with teprotumumab throughout pregnancy resulted in external and skeletal abnormalities. Teprotumumab exposure may lead to an increase in fetal loss [see Data]. Therefore, TEPEZZA should not be used in pregnancy, and appropriate forms of contraception should be implemented prior to initiation, during treatment and for 6 months following the last dose of TEPEZZA. If the patient becomes pregnant during treatment, TEPEZZA should be discontinued and the patient advised of the potential risk to the fetus.

The background rate of major birth defects and miscarriage is unknown for the indicated population. In the U.S. general population, the estimated background risks of major birth defects and miscarriage in clinically recognized pregnancies are 2-4% and 15-20%, respectively.

Data

Animal Data

In an abridged pilot embryofetal development study, seven pregnant cynomolgus monkeys were dosed intravenously at one dose level of teprotumumab, 75 mg/kg (2.8-fold the maximum recommended human dose (MRHD) based on AUC) once weekly from gestation day 20 through the end of gestation. The incidence of abortion was higher for the teprotumumab treated group compared to the control group. Teprotumumab caused decreased fetal growth during pregnancy, decreased fetal size and weight at caesarean section, decreased placental weight and size, and decreased amniotic fluid volume. Multiple external and skeletal abnormalities were observed in each exposed fetus, including: misshapen cranium, closely set eyes, micrognathia, pointing and narrowing of the nose, and ossification abnormalities of skull bones, sternbrae, carpals, tarsals and teeth. The test dose, 75 mg/kg of teprotumumab, was the maternal no observed adverse effect level (NOAEL).

Based on mechanism of action inhibiting IGF-1R, postnatal exposure to teprotumumab may cause harm.

8.2 Lactation

Risk Summary

There is no information regarding the presence of TEPEZZA in human milk, the effects on the breast-fed infant or the effects on milk production.

8.3 Females and Males of Reproductive Potential

Contraception

Females

Based on its mechanism of action inhibiting IGF-1R, TEPEZZA may cause fetal harm when administered to a pregnant woman [see *Use in Specific Populations (8.1)*]. Advise females of reproductive potential to use effective contraception prior to initiation, during treatment with TEPEZZA and for 6 months after the last dose of TEPEZZA.

8.4 Pediatric Use

Safety and effectiveness have not been established in pediatric patients.

8.5 Geriatric Use

Of the 171 patients in the two randomized trials, 15% were 65 years of age or older; the number of patients 65 years or older was similar between treatment groups. No overall differences in efficacy or safety were observed between patients 65 years or older and younger patients (less than 65 years of age).

10 OVERDOSAGE

No information is available for patients who have received an overdose.

11 DESCRIPTION

Teprotumumab-trbw, an insulin-like growth factor-1 receptor inhibitor (IGF-1R), is a fully human IgG1 monoclonal antibody produced in Chinese hamster ovary (CHO-DG44) cells. It has a molecular weight of approximately 148 kilodaltons.

TEPEZZA (teprotumumab-trbw) for injection is supplied as a sterile, preservative-free, white to off-white, lyophilized powder for intravenous infusion. Each single-dose vial contains 500 mg of teprotumumab-trbw, L-histidine (7.45 mg), L-histidine hydrochloride monohydrate (31.8 mg), polysorbate 20 (1 mg), and trehalose dihydrate (946 mg). After reconstitution with 10 mL of Sterile Water for Injection, USP, the final concentration is 47.6 mg/mL with a pH of 5.5.

12 CLINICAL PHARMACOLOGY

12.1 Mechanism of Action

Teprotumumab-trbw's mechanism of action in patients with Thyroid Eye Disease has not been fully characterized. Teprotumumab-trbw binds to IGF-1R and blocks its activation and signaling.

12.2 Pharmacodynamics

No formal pharmacodynamic studies have been conducted with teprotumumab-trbw.

12.3 Pharmacokinetics

The pharmacokinetics of teprotumumab-trbw was described by a two compartment population PK model based on data from 40 patients with Thyroid Eye Disease receiving an initial intravenous infusion of 10 mg/kg, followed by infusions of 20 mg/kg TEPEZZA every 3 weeks in two clinical trials. Following this regimen, the mean (\pm standard deviation) estimates for steady-state area under the concentration curve (AUC), peak (C_{max}), and trough (C_{trough}) concentrations of teprotumumab-trbw were 138 (\pm 34) mg·hr/mL, 632 (\pm 139) mcg/mL, and 176 (\pm 56) mcg/mL, respectively.

Distribution

Following the recommended TEPEZZA dosing regimen, the population PK estimated mean (\pm standard deviation) for central and peripheral volume of distribution of teprotumumab-trbw were 3.26 (\pm 0.87) L and 4.32 (\pm 0.67) L, respectively. The mean (\pm standard deviation) estimated inter-compartment

clearance was 0.74 (\pm 0.16) L/day.

Elimination

Following the recommended TEPEZZA dosing regimen, the population PK estimated mean (\pm standard deviation) for the clearance of teprotumumab-trbw was 0.27 (\pm 0.08) L/day and for the elimination half-life was 20 (\pm 5) days.

Metabolism

Metabolism of teprotumumab-trbw has not been fully characterized. However, teprotumumab-trbw is expected to undergo metabolism via proteolysis.

Specific Populations

No clinically significant differences in the pharmacokinetics of teprotumumab-trbw were observed following administration of TEPEZZA based on patient's age (18-80 years), gender, race/ethnicity (103 White, 10 Black, and 3 Asian), weight (46-169 kg), mild to moderate renal impairment (creatinine clearance 30 to 89 mL/min estimated by Cockcroft-Gault Equation), bilirubin levels (2.7-24.3 μ mol/L), aspartate aminotransferase (AST) levels (11-221 U/L), or alanine aminotransferase (ALT) levels (7-174 U/L). The effect of hepatic impairment on the pharmacokinetics of teprotumumab-trbw is unknown.

Drug Interactions

No studies evaluating the drug interaction potential of TEPEZZA have been conducted.

13 NONCLINICAL TOXICOLOGY

13.1 Carcinogenesis, Mutagenesis, Impairment of Fertility

Carcinogenesis

The carcinogenic potential of TEPEZZA has not been evaluated in long-term animal studies.

Mutagenesis

The genotoxic potential of TEPEZZA has not been evaluated.

Impairment of Fertility

Fertility studies have not been performed with TEPEZZA.

14 CLINICAL STUDIES

TEPEZZA was evaluated in 2 randomized, double-masked, placebo-controlled studies in 171 patients with Thyroid Eye Disease: Study 1 (NCT01868997) and Study 2 (NCT03298867). Patients were randomized to receive TEPEZZA or placebo in a 1:1 ratio. Patients were given intravenous infusions (10 mg/kg for first infusion and 20 mg/kg for the remaining 7 infusions) every 3 weeks for a total of 8 infusions. Patients had a clinical diagnosis of Thyroid Eye Disease with symptoms and were euthyroid or had thyroxine and free triiodothyronine levels less than 50% above or below normal limits. Prior surgical treatment for Thyroid Eye Disease was not permitted. Proptosis ranged from 16 to 33 mm and 125 patients (73%) had diplopia at baseline.

A total of 84 patients were randomized to TEPEZZA and 87 patients were randomized to placebo. The median age was 52 years (range 20 to 79 years), 86% were White, 9% were Black or African-American, 4% were Asian and 1% identified as Other. The majority (73%) were female. At baseline, 27% of patients were smokers.

The proptosis responder rate at week 24 was defined as the percentage of patients with \geq 2 mm reduction in proptosis in the study eye from baseline, without deterioration in the non-study eye (\geq 2 mm increase) in proptosis. Additional evaluations included signs and symptoms of Thyroid Eye Disease

including pain, gaze evoked orbital pain, swelling, eyelid erythema, redness, chemosis, inflammation, clinical activity score and assessments of functional vision and patient appearance. Results for proptosis are found in Table 2.

Table 2. Efficacy Results in Patients with Thyroid Eye Disease in Study 1 and 2

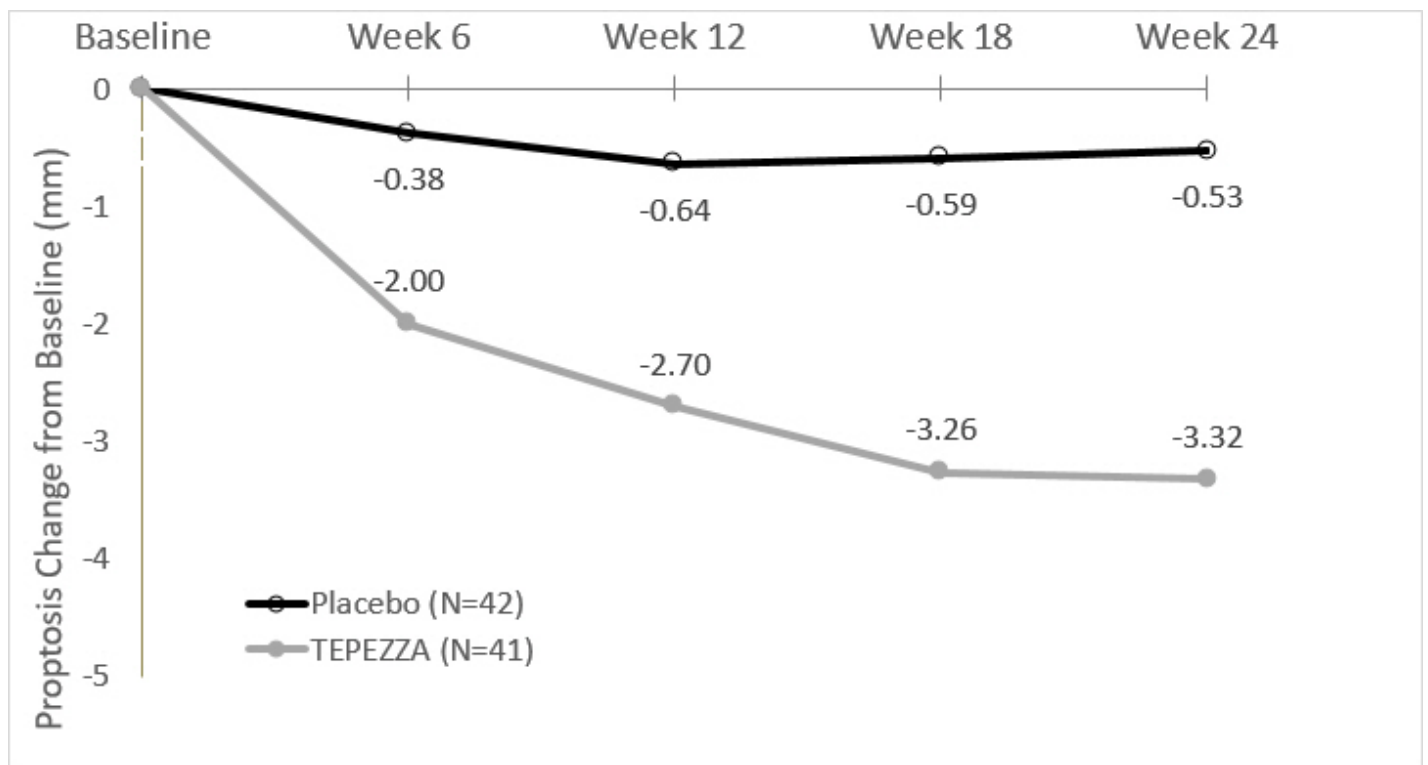
	Study 1			Study 2		
	Teprotumumab (N=42)	Placebo (N=45)	Difference (95% CI)	Teprotumumab (N=41)	Placebo (N=42)	Difference (95% CI)
Proptosis responder rate at week 24, % (n) *	71% (30)	20% (9)	51% (33, 69)	83% (34)	10% (4)	73% (59, 88)
Proptosis (mm) average change from baseline through week 24, LS Mean (SE) †	-2.5 (0.2)	-0.2 (0.2)	-2.3 (-2.8, -1.8)	-2.8 (0.2)	-0.5 (0.2)	-2.3 (-2.8, -1.8)

* Difference and its corresponding 95% Confidence Interval (CI) is based on a weighted average of the difference within each randomization stratum (tobacco user, tobacco non-use) using CMH weights.

† Results were obtained from an MMRM with an unstructured covariance matrix and including treatment, smoking status, baseline value, visit, treatment by visit, and visit by baseline value interaction as fixed effects. A change from Baseline of 0 was imputed at the first post-Baseline visit for any subject without a post-Baseline value.

In Study 2, improvement of proptosis as measured by mean change from Baseline was observed as early as 6 weeks and continued to improve through week 24 as shown in Figure 1. Similar results were seen in Study 1.

Figure 1. Change from Baseline in Proptosis over 24 Weeks in Study 2



P<0.01 at each timepoint

TEPEZZA also led to improvement in the less severely impacted "fellow" eye.

Diplopia (double vision) was evaluated in a subgroup of patients that had diplopia at baseline in Study 1 and 2. Results are shown in Table 3.

Table 3. Diplopia in Patients with Thyroid Eye Disease in Study 1 and 2

Parameter	TEPEZZA (n=66)	Placebo (n=59)
Diplopia Responder rate* at week 24, % (n)	53% (35)	25% (15)

P<0.01

* Diplopia was evaluated on a 4-point scale where scores ranged from 0 for no diplopia to 3 for constant diplopia. A diplopia responder was defined as a patient with baseline diplopia >0 and a score of 0 at week 24.

Following discontinuation of treatment in Study 1, 53% of patients (16 of 30 patients) who were proptosis responders at week 24 maintained proptosis response 51 weeks after the last TEPEZZA infusion. 67% of patients (12 of 18) who were diplopia responders at week 24 maintained diplopia response 51 weeks after the last TEPEZZA infusion.

Subgroups

Examination of age and gender subgroups did not identify differences in response to TEPEZZA among these subgroups. Reduction in proptosis was similar between smokers and non-smokers in both studies.

16 HOW SUPPLIED/STORAGE AND HANDLING

TEPEZZA (teprotumumab-trbw) for injection is a sterile, preservative-free, white to off-white lyophilized powder available as follows:

Carton containing one 500 mg single-dose vial

NDC 75987-130-15

Refrigerate at 2°C to 8°C (36°F to 46°F) in original carton until time of use to protect from light. Do not freeze.

17 PATIENT COUNSELING INFORMATION

Embryo-Fetal Toxicity

- Advise females of reproductive potential that TEPEZZA can cause harm to a fetus and to inform their healthcare provider of a known or suspected pregnancy.
- Educate and counsel females of reproductive potential about the need to use effective contraception prior to initiation, during treatment with TEPEZZA and for 6 months after the last dose of TEPEZZA.

Infusion-related reactions

- Advise patients that TEPEZZA may cause infusion reactions that can occur at any time. Instruct patients to recognize the signs and symptoms of infusion reaction and to contact their healthcare provider immediately for signs or symptoms of potential infusion-related reactions.

Exacerbation of Inflammatory Bowel Disease

- Advise patients on the risk of inflammatory bowel disease (IBD) and to seek medical advice immediately if they experience diarrhea, with or without blood or rectal bleeding, associated with abdominal pain or cramping/colic, urgency, tenesmus or incontinence.

Hyperglycemia

- Advise patients on the risk of hyperglycemia and, if diabetic, discuss with healthcare provider to adjust glycemic control medications as appropriate. Encourage compliance with glycemic control.

Manufactured by:

Horizon Therapeutics Ireland DAC

Dublin, Ireland

U.S. License No. 2022

Distributed by:

Horizon Therapeutics USA, Inc.

Lake Forest, IL 60045

PRINCIPAL DISPLAY PANEL - 500 mg Vial Carton

NDC-75987-130-15

TEPEZZA™

(teprotumumab-trbw)

for Injection

500 mg/vial

For Intravenous Infusion Only

Reconstitute and Further Dilute Prior to Use

Single-dose vial. Discard unused portion.

Rx Only



TEPEZZA

teprotumumab injection, powder, lyophilized, for solution

Product Information

Product Type	HUMAN PRESCRIPTION DRUG	Item Code (Source)	NDC:75987-130
Route of Administration	INTRAVENOUS		

Active Ingredient/Active Moiety

Ingredient Name	Basis of Strength	Strength
teprotumumab (UNII: Y64GQ0KC0A) (teprotumumab - UNII:Y64GQ0KC0A)	teprotumumab	500 mg

Inactive Ingredients

Ingredient Name	Strength
HISTIDINE (UNII: 4QD397987E)	7.45 mg
HISTIDINE MONOHYDROCHLORIDE MONOHYDRATE (UNII: X573657P6P)	
POLYSORBATE 20 (UNII: 7T1F30V5YH)	

TREHALOSE DIHYDRATE (UNII: 7YIN7J07X4)

Product Characteristics

Color	WHITE (white to off-white)	Score	
Shape		Size	
Flavor		Imprint Code	
Contains			

Packaging

#	Item Code	Package Description	Marketing Start Date	Marketing End Date
1	NDC:75987-130-15	1 in 1 CARTON	01/21/2020	
1		1 in 1 VIAL, SINGLE-DOSE; Type 0: Not a Combination Product		

Marketing Information

Marketing Category	Application Number or Monograph Citation	Marketing Start Date	Marketing End Date
BLA	BLA761143	01/21/2020	

Labeler - Horizon Therapeutics USA, Inc. (033470838)

Establishment

Name	Address	ID/FEI	Business Operations
Catalent Indiana, LLC		172209277	MANUFACTURE(75987-130) , PACK(75987-130) , ANALYSIS(75987-130) , LABEL(75987-130)

Establishment

Name	Address	ID/FEI	Business Operations
AGC Biologics A/S		307169677	API MANUFACTURE(75987-130) , ANALYSIS(75987-130)

Establishment

Name	Address	ID/FEI	Business Operations
AGC Biologics, Inc.		824771724	ANALYSIS(75987-130)

Establishment

Name	Address	ID/FEI	Business Operations
Solvias AG		480739627	ANALYSIS(75987-130)

Establishment

Name	Address	ID/FEI	Business Operations
Bioreliance Ltd.		505004556	ANALYSIS(75987-130)

Establishment			
Name	Address	ID/FEI	Business Operations
Bioreliance Ltd.		217063511	API MANUFACTURE(75987-130)

Establishment			
Name	Address	ID/FEI	Business Operations
Bioreliance Corporation		147227730	API MANUFACTURE(75987-130)

Establishment			
Name	Address	ID/FEI	Business Operations
Euro fins Biolab SRL		429117112	ANALYSIS(75987-130)

Establishment			
Name	Address	ID/FEI	Business Operations
Charles River Laboratories Edinburgh Limited		296499353	ANALYSIS(75987-130)

Revised: 1/2020

Horizon Therapeutics USA, Inc.