

**ATHLETES FOOT- butenafine hydrochloride cream**  
**TOPCO ASSOCIATES LLC**

-----  
**Athlete's Foot Cream**

**Drug Facts**

**Active ingredient**

Butenafine hydrochloride 1%

**Purpose**

Antifungal

**Uses**

- cures most athlete's foot between the toes. Effectiveness on the bottom or sides of foot is unknown.
- cures most jock itch and ringworm
- relieves itching, burning, cracking, and scaling which accompany these conditions

**Warnings**

**For external use only**

**Do not use**

- on nails or scalp
- in or near the mouth or the eyes
- for vaginal yeast infections

**When using this product** do not get into the eyes. If eye contact occurs, rinse thoroughly with water.

**Stop use and ask a doctor if** too much irritation occurs or irritation gets worse

**Keep out of reach of children.** If swallowed, get medical help or contact a Poison Control Center right away.

**Directions**

- adults and children 12 years and older:
  - use the tip of the cap to break the seal and open the tube
  - wash the affected skin with soap and water and dry completely before applying
  - **for athlete's foot between the toes:** apply to affected skin between and around the toes twice a day for 1 week (morning and night), or once a day for 4 weeks, or as directed by a doctor. Wear well-fitting, ventilated shoes. Change shoes and socks at least once daily.

**Apply between and around the toes**



**1 week twice a day or 4 weeks once a day**

- **for jock itch and ringworm:** apply once a day to affected skin for 2 weeks or as directed by a doctor.
- wash hands after each use

- children under 12 years: ask a doctor

**Other information**

- do not use if seal on tube is broken or not visible
- store between 20° to 25° C (68° to 77° F)

**Inactive ingredients**

benzyl alcohol, cetyl alcohol, glycerin, glyceryl monostearate SE, polyoxyethylene (23) cetyl ether, propylene glycol dicaprylate, purified water, sodium benzoate, stearic acid, trolamine, white petrolatum

**Questions?**

Call **1-888-423-0139**

DISTRIBUTED BY TOPCO ASSOCIATES LLC  
ELK GROVE VILLAGE, IL 60007

**PRINCIPAL DISPLAY PANEL - 12 g Tube Carton**

TopCare®  
health™

PRESCRIPTION STRENGTH

Athlete's Foot Cream Ultra

BUTENAFINE HYDROCHLORIDE CREAM 1% • ANTIFUNGAL

NET WT 0.42 OZ (12 g)

OUR PHARMACISTS

• RECOMMEND •

NDC 36800-049-01

COMPARE TO  
LOTRIMIN ULTRA®  
ACTIVE INGREDIENT\*

# Athlete's Foot Cream Ultra

BUTENAFINE HYDROCHLORIDE CREAM 1% • ANTIFUNGAL

## Clinically Proven to Cure Most Athlete's Foot Between the Toes

### RELIEVES:

- Itching • Burning
- Cracking • Scaling

### 1 Week Treatment Option for Athlete's Foot

SEE DIRECTIONS

CONTAINS THE DRUG: BUTENAFINE HYDROCHLORIDE

T174  
B75.2  
ENG19.53

NO VARNISH/NO AQ  
NO COPY/NO COLOR  
THIS FLAP FOR LOT #  
AND EXP DATE PRINT



PRESCRIPTION STRENGTH

# Athlete's Foot Cream Ultra

BUTENAFINE HYDROCHLORIDE CREAM 1% • ANTIFUNGAL



Athlete's  
Foot Cream  
Ultra  
BUTENAFINE  
HYDROCHLORIDE  
CREAM 1% • ANTIFUNGAL

NET WT 0.42 OZ (12 g)

LPK-8685-0  
0718-0  
57



\*All trademarks are property of their respective owners.  
This product is not affiliated with the makers/owners of Lotrimin Ultra®.  
DISTRIBUTED BY TOPCO ASSOCIATES LLC  
ELK GROVE VILLAGE, IL 60007  
© TOPCO TARA0518  
QUESTIONS? 1-888-423-0139  
topcare@topco.com  
www.topcarebrand.com  
MADE IN CANADA  
Visit here for more information: <http://topbrnds.com/482r65>



This TopCare® product is laboratory tested to guarantee its highest quality. Your total satisfaction is guaranteed.

NO VARNISH  
ON THIS FLAP

**Active ingredient** Butenafine hydrochloride 1%.....Antifungal

**Purpose**

**Uses**

- cures most athlete's foot between the toes.
- effectiveness on the bottom or sides of foot is unknown.
- cures most foot itch and ringworm
- relieves itching, burning, cracking, and scaling which accompany these conditions

**Warnings**

For external use only

Do not use

- on nails or scalp
- in or near the mouth or the eyes
- for vaginal yeast infections

When using this product do not get it into the eyes. If eye contact occurs, rinse thoroughly with water.

Stop use and ask a doctor if too much irritation occurs or irritation gets worse

Keep out of reach of children. If swallowed, get medical help or contact a Poison Control Center right away.

**Inactive ingredients** benzyl alcohol, cetyl alcohol, glycerin, glyceryl monostearate SE, polyoxyethylene (23) cetyl ether, propylene glycol dicaprylate, purified water, sodium benzoate, stearic acid, tolnamine, white petrolatum

**Other information**

- do not use if seal on tube is broken or not visible
- store between 20° to 25° C (68° to 77° F)

**Questions?** Call 1-888-423-0139

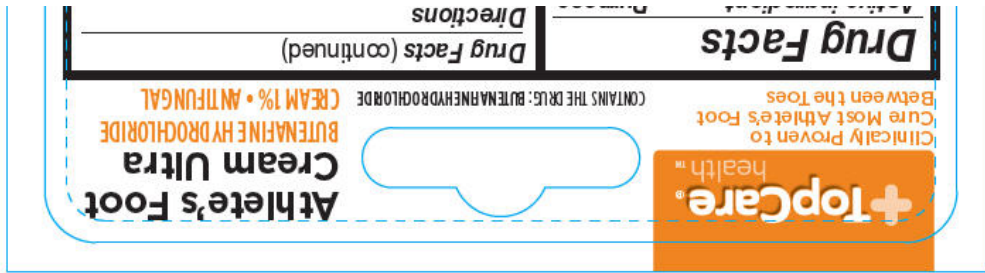
Apply between and around the toes

- for athlete's foot between the toes: apply to affected skin between and around the toes twice a day for 1 week (morning and night), or once a day for 4 weeks, or as directed by a doctor. Wear well-fitting, ventilated shoes. Change shoes and socks at least once daily.
- for foot itch and ringworm: apply once a day to affected skin for 2 weeks, or as directed by a doctor.
- wash hands after each use
- children under 12 years: ask a doctor.
- 1 week (twice a day or 4 weeks once a day)

• use the tip of the cap to break the seal and open the tube

• wash the affected skin with soap and water and dry completely before applying

• for athlete's foot between the toes: apply to affected skin between and around the toes twice a day for 1 week (morning and night), or once a day for 4 weeks, or as directed by a doctor. Wear well-fitting, ventilated shoes. Change shoes and socks at least once daily.



## ATHLETES FOOT

butenafine hydrochloride cream

### Product Information

<b>Product Type</b>	HUMAN OTC DRUG	<b>Item Code (Source)</b>	NDC:36800-049
<b>Route of Administration</b>	TOPICAL		

### Active Ingredient/Active Moiety

Ingredient Name	Basis of Strength	Strength
<b>Butenafine Hydrochloride</b> (UNII: R8 XA2029 ZI) (Butenafine - UNII:9 1Y494NL0 X)	Butenafine Hydrochloride	10 mg in 1 g

### Inactive Ingredients

Ingredient Name	Strength
<b>benzyl alcohol</b> (UNII: LKG8494WBH)	
<b>cetyl alcohol</b> (UNII: 936JST6JCN)	
<b>glycerin</b> (UNII: PDC6A3C0OX)	
<b>Glyceryl Stearate Se</b> (UNII: FCZ5MH785I)	
<b>CETETH-23</b> (UNII: 495CTZ441V)	
<b>propylene glycol dicaprylate</b> (UNII: 581437HWX2)	
<b>water</b> (UNII: 059QF0KO0R)	
<b>sodium benzoate</b> (UNII: OJ245FE5EU)	
<b>stearic acid</b> (UNII: 4ELV7Z65AP)	
<b>trolamine</b> (UNII: 9O3K93S3TK)	
<b>petrolatum</b> (UNII: 4T6H12BN9U)	

### Product Characteristics

<b>Color</b>	WHITE	<b>Score</b>	
<b>Shape</b>		<b>Size</b>	
<b>Flavor</b>		<b>Imprint Code</b>	
<b>Contains</b>			

### Packaging

#	Item Code	Package Description	Marketing Start Date	Marketing End Date
1	NDC:36800-049-01	1 in 1 CARTON	12/12/2017	
1		12 g in 1 TUBE; Type 0: Not a Combination Product		

## Marketing Information

Marketing Category	Application Number or Monograph Citation	Marketing Start Date	Marketing End Date
ANDA	ANDA205181	11/17/2017	

**Labeler** - TOPCO ASSOCIATES LLC (006935977)

Revised: 8/2018

TOPCO ASSOCIATES LLC