

**DULCOLAX SOFT CHEWS BLACK CHERRY- magnesium hydroxide tablet,
chewable
Chattem, Inc.**

Dulcolax Soft chew Black Cherry

Dulcolax Soft Chews Saline Laxative Black Cherry

Drug Facts

Active ingredient (in each chew)

Magnesium hydroxide USP 1200 mg

Purpose

Saline laxative

Use

- for relief of occasional constipation (irregularity)
- this product generally produces bowel movement in ½ to 6 hours

Warnings

Ask a doctor before use if you have

- kidney disease ● a magnesium-restricted diet
- stomach pain, nausea or vomiting ● noticed a sudden change in bowel habits that lasts over 2 weeks

Ask a doctor or pharmacist before use if you are

taking a prescription drug. This product may interact with certain prescription drugs.

Stop use and ask a doctor if

- you have rectal bleeding or fail to have a bowel movement after using this product. These could be signs of a serious condition. ● you need to use a laxative for more than 1 week

If pregnant or breast-feeding,

ask a health professional before use.

Keep out of reach of children.

In case of overdose, get medical help or contact a Poison Control Center right away.

Directions

- drink a full glass (8 oz) of liquid with each dose
- dose may be taken as a single daily dose or in divided doses
- do not exceed the maximum recommended daily dose in a 24 hour period

adults and children 12 years of age and over	take 2 to 4 chews
children 6 to under 12 years of age	take 1 to 2 chews
children 4 to under 6 years of age	take 1 chew (single dose or in divided doses)
children under 4 years of age	ask a doctor

Other information

- each chew contains: **magnesium 500 mg, sodium 2 mg**
- store at room temperature 20°-25°C (68°-77°F)

Inactive ingredients

corn syrup, FD&C red no. 40, glycerin, hydrogenated coconut oil, lecithin (soy), natural flavor, sucrose, water

Questions?

Call **1-866-844-2798** or visit **www.Dulcolax.com**

Principal Display Panel

Dulcolax
Saline Laxative
Soft
Chews
Black Cherry
60 Soft chews



Dulcolax

Magnesium Hydroxide 1200 mg Saline Laxative

soft Chews

Works **Naturally** + Relief
with your Body in as little as
30 Minutes

**Stimulant
Free!**

60 Soft Chews
individually wrapped



**black
cherry**

Naturally Flavored

© 2011 Pharmacia
All rights reserved.
Dulcolax is a registered trademark of Pharmacia.
Soft Chews is a registered trademark of Pharmacia.

SANOFLAX

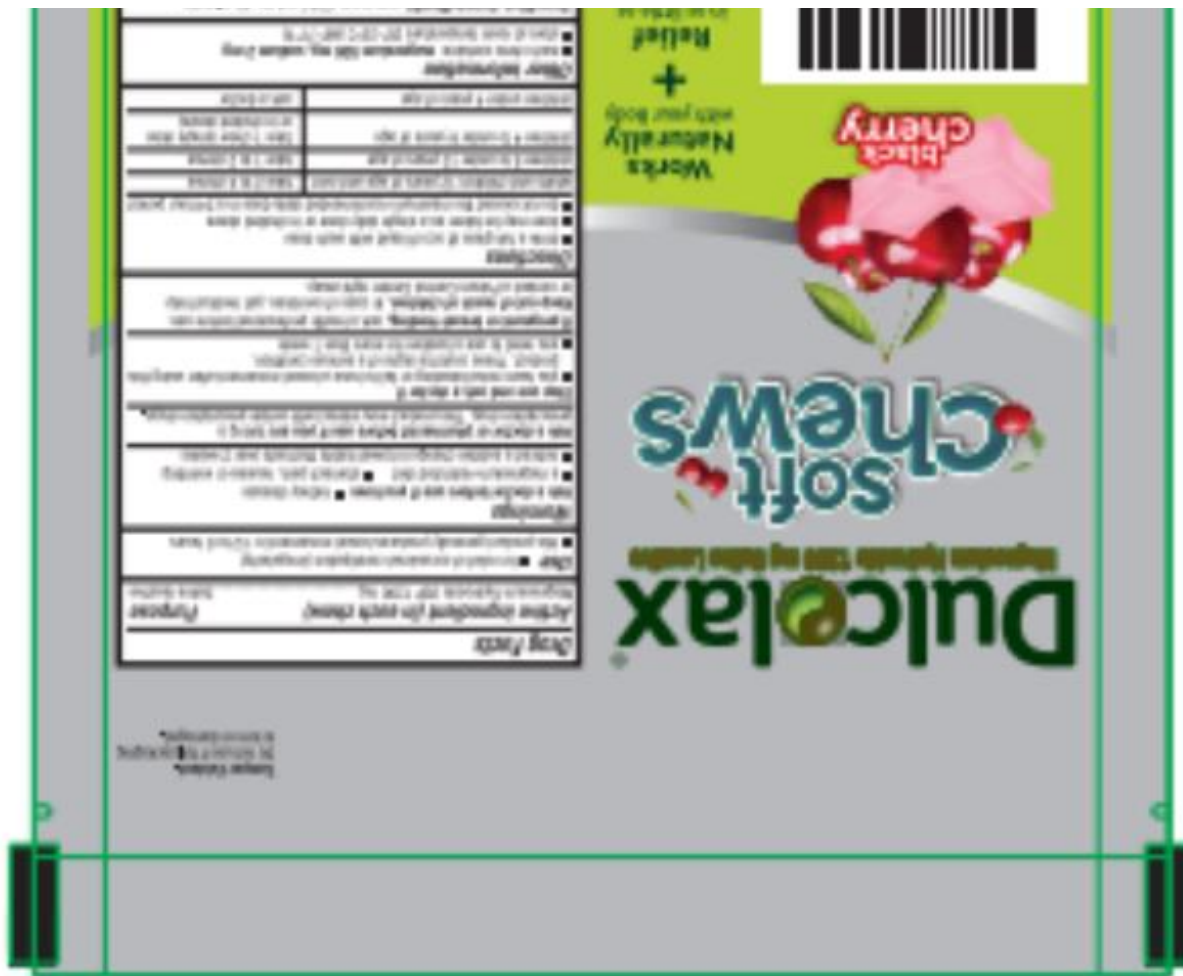
Keep out of reach of children.
See back panel for more information.

10-01

CAUTION: If you are pregnant, please consult your doctor before using this product.
Keep out of reach of children. See back panel for more information.

30 Minutes





DULCOLAX SOFT CHEWS BLACK CHERRY

magnesium hydroxide tablet, chewable

Product Information

Product Type	HUMAN OTC DRUG	Item Code (Source)	NDC:41167-0260
Route of Administration	ORAL		

Active Ingredient/Active Moiety

Ingredient Name	Basis of Strength	Strength
MAGNESIUM HYDROXIDE (UNII: NBZ3QY004S) (MAGNESIUM CATION - UNII:T6V3LHY838)	MAGNESIUM HYDROXIDE	1200 mg

Inactive Ingredients

Ingredient Name	Strength
CORN SYRUP (UNII: 9G5L16BK6N)	
FD&C RED NO. 40 (UNII: WZB9127XOA)	
GLYCERIN (UNII: PDC6A3C0OX)	
HYDROGENATED COCONUT OIL (UNII: JY81OXM1OM)	

LECITHIN, SOYBEAN (UNII: 1DI56QDM62)	
SUCROSE (UNII: C151H8M554)	
WATER (UNII: 059QF0KO0R)	

Product Characteristics

Color	red	Score	no score
Shape	RECTANGLE	Size	35mm
Flavor	CHERRY (Black cherry)	Imprint Code	
Contains			

Packaging

#	Item Code	Package Description	Marketing Start Date	Marketing End Date
1	NDC:41167-0260-0	60 in 1 BAG; Type 0: Not a Combination Product	03/01/2022	

Marketing Information

Marketing Category	Application Number or Monograph Citation	Marketing Start Date	Marketing End Date
OTC Monograph Drug	505G(a)(3)	03/01/2022	

Labeler - Chattem, Inc. (003336013)