

**O HUI WHITE EXTREME CELLIGHT - protocatechualdehyde cream**  
**LG Household and Healthcare, Inc.**

*Disclaimer: This drug has not been found by FDA to be safe and effective, and this labeling has not been approved by FDA. For further information about unapproved drugs, click here.*

-----

**Drug Fact**

PROTocatechualdehyde 0.032%

Whitening cream

Stop use if rash or irritation develops and lasts.

Keep out of eyes. Rinse with water to remove.

Use to whiten skin.

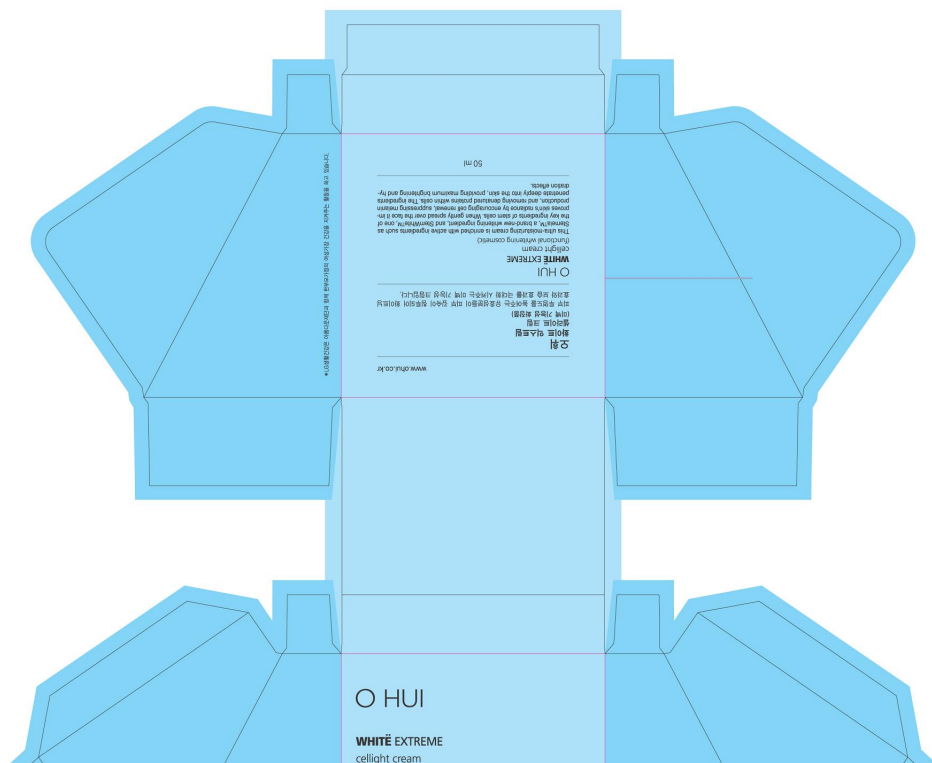
Keep out of reach of children. If swallowed, get medical help or contact a Poison Control Center right away.

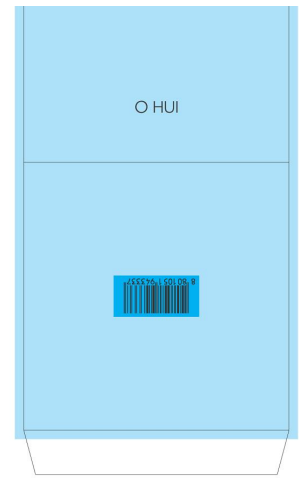
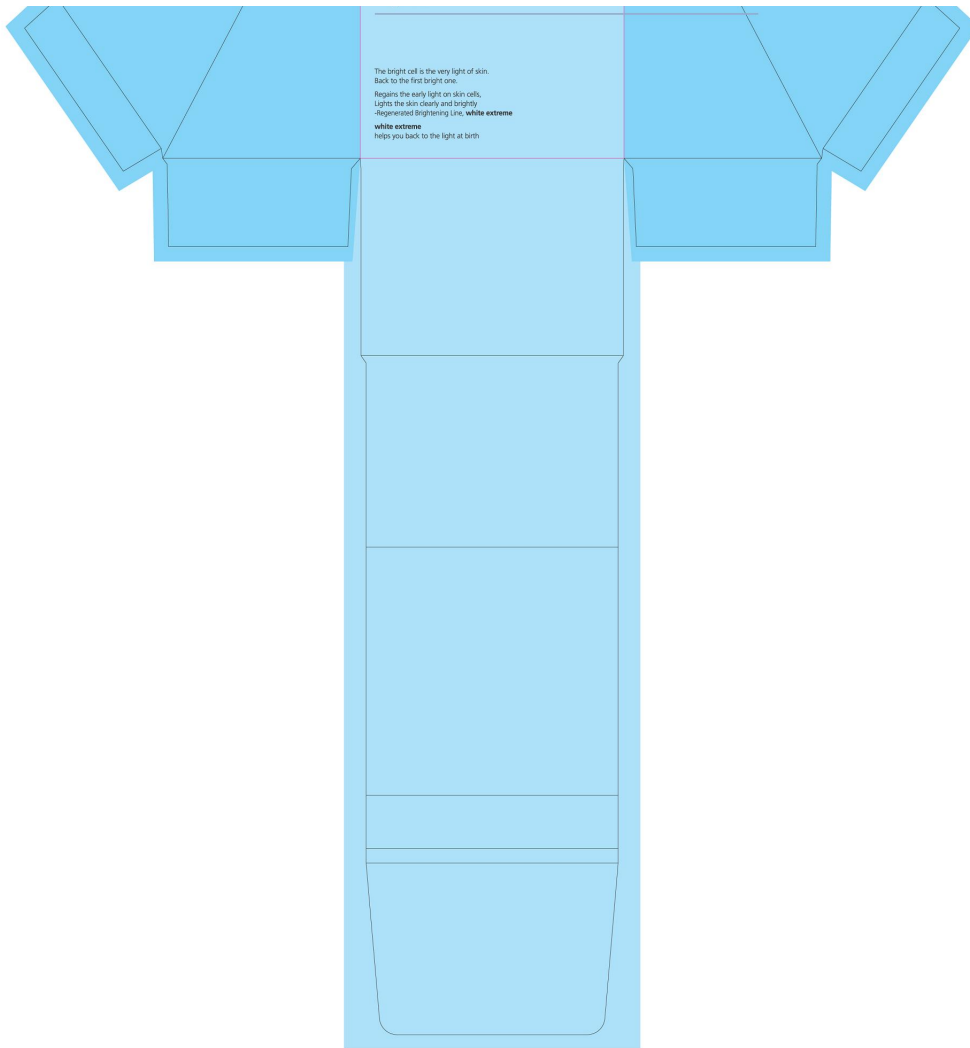
WATER, DIPROPYLENE GLYCOL, CYCLOPENTASILOXANE, GLYCERIN, MEDIUM-CHAIN TRIGLYCERIDES, NEOPENTYL GLYCOL DICAPRATE, TREHALOSE, SQUALANE, 1,2-HEXANEDIOL, GLYCERYL STEARATE, DIMETHICONE, PANTHENOL, ALCOHOL, PHENOXYETHANOL, COPPER, ALPHA-TOCOPHEROL, EDETATE TRISODIUM, TROLAMINE, SODIUM METABISULFITE.

OHUI

WHITE EXTREME

CELLIGHT CREAM





Use as needed to whiten skin.

## O HUI WHITE EXTREME CELLIGHT

protocatechualdehyde cream

### Product Information

|                                |                |                           |               |
|--------------------------------|----------------|---------------------------|---------------|
| <b>Product Type</b>            | HUMAN OTC DRUG | <b>Item Code (Source)</b> | NDC:53208-507 |
| <b>Route of Administration</b> | TOPICAL        |                           |               |

### Active Ingredient/Active Moiety

| Ingredient Name   | Basis of Strength    | Strength              |
|---|----------------------|-----------------------|
| <b>PROTOCATECHUALDEHYDE</b> (UNII: 4PVP2HCH4T) (PROTOCATECHUALDEHYDE - UNII:4PVP2HCH4T) | PROTOCATECHUALDEHYDE | 0.032 mL<br>in 100 mL |

### Inactive Ingredients

| Ingredient Name                              | Strength |
|--|----------|
| <b>WATER</b> (UNII: 059QF0KO0R)              |          |
| <b>GLYCERIN</b> (UNII: PDC6A3C0OX)           |          |
| <b>DIPROPYLENE GLYCOL</b> (UNII: E107L85C40) |          |

|   |
|---|
| TROLAMINE (UNII: 9O3K93S3TK)                  |
| MEDIUM-CHAIN TRIGLYCERIDES (UNII: C9H2L21V7U) |
| CYCLOMETHICONE 5 (UNII: 0THT5PC10R)           |
| GLYCERYL MONOSTEARATE (UNII: 230OU9XXE4)      |
| NEOPENTYL GLYCOL DICAPRATE (UNII: 77T908SE82) |
| TREHALOSE (UNII: B8WCK70T7I)                  |
| SQUALANE (UNII: GW89575KF9)                   |
| 1,2-HEXANEDIOL (UNII: TR046Y3K1G)             |
| DIMETHICONE (UNII: 92RU3N3Y1O)                |
| PHENOXYETHANOL (UNII: HIE492ZZ3T)             |
| ALPHA-TOCOPHEROL (UNII: H4N855PNZ1)           |
| COPPER (UNII: 789U1901C5)                     |
| PANTHENOL (UNII: WV9CM0067Z)                  |
| SODIUM METABISULFITE (UNII: 4VON5FNS3C)       |
| ALCOHOL (UNII: 3K9958V90M)                    |
| EDETATE TRISODIUM (UNII: 420IP921MB)          |

### Packaging

| # | Item Code        | Package Description  | Marketing Start Date | Marketing End Date |
|---|------------------|----------------------|----------------------|--------------------|
| 1 | NDC:53208-507-02 | 1 in 1 BOX           |                      |                    |
| 1 | NDC:53208-507-01 | 50 mL in 1 CONTAINER |                      |                    |

### Marketing Information

| Marketing Category    | Application Number or Monograph Citation | Marketing Start Date | Marketing End Date |
|-----------------------|--|----------------------|--------------------|
| unapproved drug other |  | 03/16/2011           |                    |

**Labeler** - LG Household and Healthcare, Inc. (688276187)

**Registrant** - LG Household and Healthcare, Inc. (688276187)

### Establishment

| Name                              | Address | ID/FEI    | Business Operations |
|-----------------------------------|---------|-----------|---------------------|
| LG Household and Healthcare, Inc. |         | 688276187 | manufacture         |

Revised: 5/2012

LG Household and Healthcare, Inc.