

CHERRY COUGH DROP- menthol lozenge
The Kroget Co.

Disclaimer: Most OTC drugs are not reviewed and approved by FDA, however they may be marketed if they comply with applicable regulations and policies. FDA has not evaluated whether this product complies.

Menthol 5.8mg

Active ingredient (in each drop)

Menthol 5.8 mg

Purpose

Cough suppressant/

Oral anesthetic

Uses temporarily relieves:

- cough as may occur with a cold
- occasional minor irritation and sore throat

Warnings

Sore throat warning: if sore throat is severe, persists for more than 2 days, is accompanied or followed by fever, headache, rash, swelling, nausea, or vomiting, consult a doctor promptly. If sore mouth symptoms do not improve in 7 days, see you dentist or doctor promptly. These symptoms may be serious.

Ask a doctor before use if you have:

- persistent or chronic cough such as occurs with smoking, asthma, or emphysema
- cough accompanied by excessive phlegm (mucus)

Stop use and consult doctor if

- cough persists for more than 7 days, tends to recur, or is accompanied by fever, rash, or persistent headache. These could be signs of a serious condition.
- sore throat is severe, or irritation, pain or redness lasts

or worsens

- sore mouth does not improve in 7 days

If pregnant or breast-feeding, ask a health professional before use.

Keep out of reach of children.

Directions

adults and children 5 years and over allow 1 drop to dissolve slowly in mouth. May be repeated every two hours as necessary or as directed by a doctor.

children under 5 years ask a doctor

Other information

- 10 calories per drop
- do not use if bag is torn or open

Inactive ingredients: Corn starch, corn syrup, eucalyptus oil, FD&C red no. 40, glycerin, medium chain triglycerides, natural and artificial flavors, soybean oil, sucrose and water.

Question or comments?

1-800-632-6900



Side B

SUPPRESSANT/ ORAL ANESTHETIC

Soothes Sore
Throat Pain
Temporarily
Relieves Cough



Cherry Flavor
30 DROPS



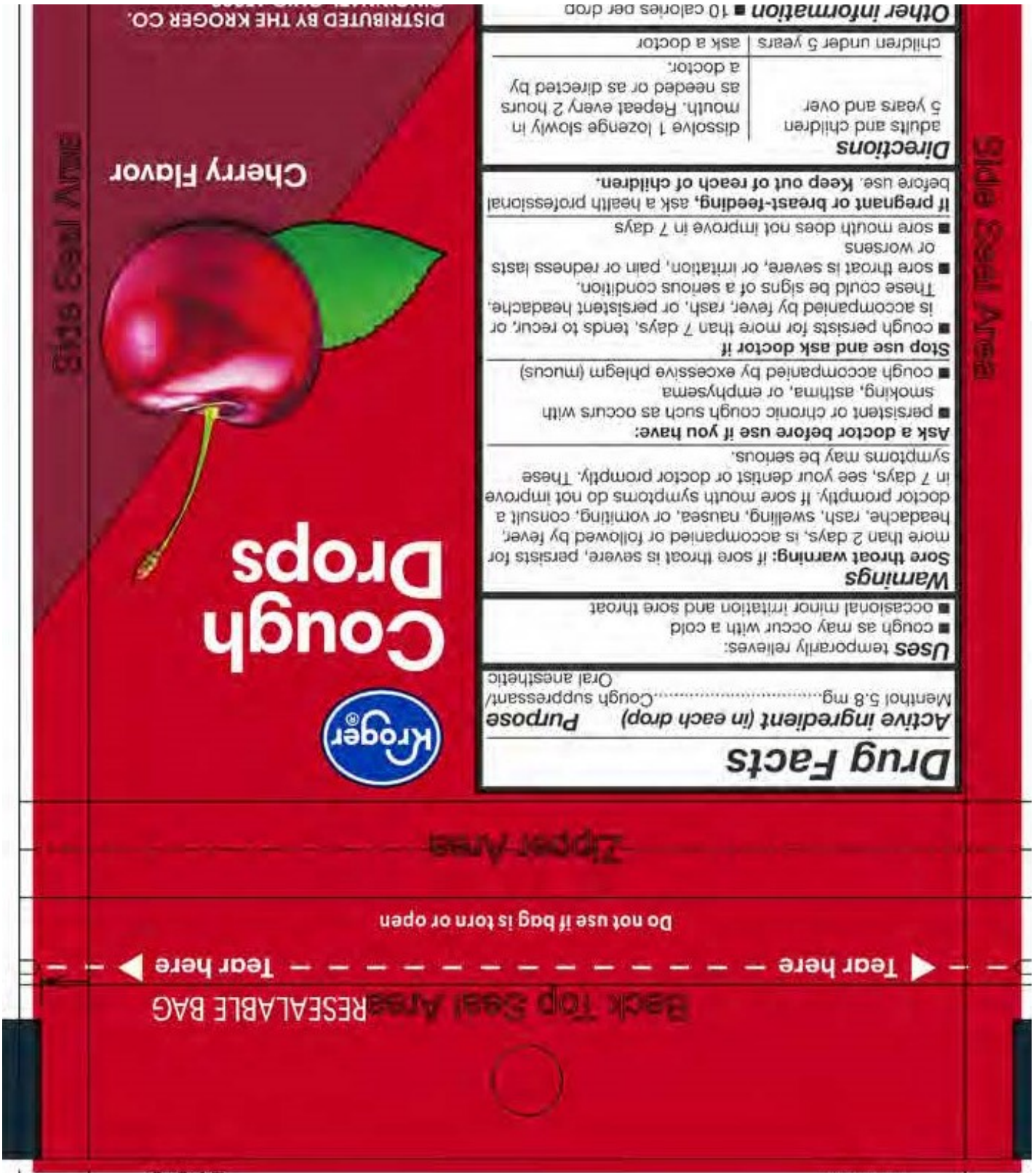
PN-502709



GLUTEN FREE

CINCINNATI, OHIO 45202
QUALITY GUARANTEE
800-632-6900 | www.kroger.com
Halle® is a registered trademark of
Mondelēz Global LLC, East Hanover, NJ 07936.
Mondelēz Global LLC is not affiliated with
The Kroger Co. or this product.

do not use if bag is torn or open
Inactive ingredients: Corn starch, corn syrup,
eucalyptus oil, FD&C red no. 40, glycerin, medium chain
triglycerides, natural & artificial flavors, soybean oil,
sucrose and water.
Questions? 1-800-632-6900



CHERRY COUGH DROP

menthol lozenge

Product Information

| | | | |
|--------------------------------|----------------|---------------------------|---------------|
| Product Type | HUMAN OTC DRUG | Item Code (Source) | NDC:30142-032 |
| Route of Administration | ORAL | | |

Active Ingredient/Active Moiety

| Ingredient Name | Basis of Strength | Strength |
|---|--------------------------|-----------------|
| MENTHOL (UNII: L7T10EIP3A) (MENTHOL - UNII:L7T10EIP3A) | MENTHOL | 5.8 mg |

Inactive Ingredients

| Ingredient Name | Strength |
|---------------------------------|-----------------|
| WATER (UNII: 059QF0KO0R) | |

Product Characteristics

| | | | |
|-----------------|--------|---------------------|--------------------------|
| Color | red | Score | score with uneven pieces |
| Shape | OVAL | Size | 17mm |
| Flavor | CHERRY | Imprint Code | B |
| Contains | | | |

Packaging

| # | Item Code | Package Description | Marketing Start Date | Marketing End Date |
|----------|------------------|--|-----------------------------|---------------------------|
| 1 | NDC:30142-032-30 | 30 in 1 BAG; Type 0: Not a Combination Product | 05/28/2014 | |



Marketing Information

| Marketing Category | Application Number or Monograph Citation | Marketing Start Date | Marketing End Date |
|---------------------|--|----------------------|--------------------|
| OTC monograph final | part341 | 05/28/2014 | |

Labeler - The Kroget Co. (006999528)

Registrant - BestCo Inc. (002149136)

Establishment

| Name | Address | ID/FEI | Business Operations |
|-------------|---------|-----------|------------------------|
| BestCo Inc. | | 002149136 | manufacture(30142-032) |