

SUTENT- sunitinib malate capsule

Pfizer Laboratories Div Pfizer Inc

HIGHLIGHTS OF PRESCRIBING INFORMATION

These highlights do not include all the information needed to use SUTENT safely and effectively. See full prescribing information for SUTENT.

SUTENT® (sunitinib malate) capsules, for oral use
Initial U.S. Approval: 2006

WARNING: HEPATOTOXICITY

See full prescribing information for complete boxed warning.

Hepatotoxicity may be severe, and in some cases fatal. Monitor hepatic function and interrupt, dose reduce, or discontinue SUTENT as recommended [see Warnings and Precautions (5.1)].

INDICATIONS AND USAGE

SUTENT is a kinase inhibitor indicated for:

- treatment of adult patients with gastrointestinal stromal tumor (GIST) after disease progression on or intolerance to imatinib mesylate. (1.1)
- treatment of adult patients with advanced renal cell carcinoma (RCC). (1.2)
- adjuvant treatment of adult patients at high risk of recurrent RCC following nephrectomy. (1.3)
- treatment of progressive, well-differentiated pancreatic neuroendocrine tumors (pNET) in adult patients with unresectable locally advanced or metastatic disease. (1.4)

DOSAGE AND ADMINISTRATION

GIST and Advanced RCC:

- The recommended dosage is 50 mg orally once daily for the first 4 weeks of each 6-week cycle (Schedule 4/2). (2.1)

Adjuvant Treatment of RCC:

- The recommended dosage is 50 mg orally once daily for the first 4 weeks of a 6-week cycle (Schedule 4/2) for a maximum of 9 cycles. (2.2)

pNET:

- The recommended dosage is 37.5 mg orally once daily. (2.3)

DOSAGE FORMS AND STRENGTHS

Capsules: 12.5 mg, 25 mg, 37.5 mg, 50 mg sunitinib (3)

CONTRAINDICATIONS

None (4)

WARNINGS AND PRECAUTIONS

- **Hepatotoxicity:** Fatal liver failure has been observed. Monitor liver function tests at baseline, during each cycle, and as clinically indicated. Interrupt SUTENT for Grade 3 hepatotoxicity until resolution to Grade ≤ 1 or baseline and resume SUTENT at a reduced dose; discontinue if no resolution. Discontinue SUTENT in patients with Grade 4 hepatotoxicity, in patients who have subsequent severe changes in liver function tests or other signs and symptoms of liver failure. (2.4, 5.1)
- **Cardiovascular Events:** Myocardial ischemia, myocardial infarction, heart failure, cardiomyopathy, and decreased left ventricular ejection fraction (LVEF) to below the lower limit of normal including death have occurred. Monitor for signs and symptoms of congestive heart failure and consider monitoring LVEF at baseline and periodically during treatment. Discontinue SUTENT for clinical manifestations of congestive heart failure. Interrupt and/or dose reduce for decreased LVEF. (5.2)
- **QT Interval Prolongation and Torsade de Pointes:** Monitor patients at higher risk for developing QT interval prolongation. Consider monitoring of electrocardiograms and electrolytes. (5.3)

- Hypertension: Monitor blood pressure at baseline and as clinically indicated. Initiate and/or adjust antihypertensive therapy as appropriate. Interrupt SUTENT for Grade 3 hypertension until resolution to Grade ≤ 1 or baseline, then resume SUTENT at a reduced dose. Discontinue SUTENT in patients who develop Grade 4 hypertension. (5.4)
- Hemorrhagic Events: Tumor-related hemorrhage and viscus perforation (both with fatal events) have occurred. Perform serial complete blood counts and physical examinations. Interrupt SUTENT for Grade 3 or 4 hemorrhagic events until resolution to Grade ≤ 1 or baseline, then resume at a reduced dose; discontinue if no resolution. (5.5)
- Tumor Lysis Syndrome (TLS): TLS (some fatal) has been reported primarily in patients with RCC and GIST. Monitor these patients and treat as clinically indicated. (5.6)
- Thrombotic microangiopathy (TMA): TMA, including thrombotic thrombocytopenic purpura and hemolytic uremic syndrome, sometimes leading to renal failure or a fatal outcome, has been reported. Discontinue SUTENT for TMA. (5.7)
- Proteinuria: Renal failure or a fatal outcome has occurred. Monitor urine protein. Interrupt treatment for 24-hour urine protein of 3 or more grams. Discontinue for repeat episodes of 24-hour urine protein of 3 or more grams despite dose reductions or nephrotic syndrome. (5.8)
- Dermatologic Toxicities: Necrotizing fasciitis, erythema multiforme, Stevens-Johnson syndrome (SJS), and toxic epidermal necrolysis (TEN) (some fatal) have occurred. Discontinue SUTENT for these events. (5.9)
- Reversible Posterior Leukoencephalopathy Syndrome (RPLS): RPLS (some fatal) has been reported. Monitor for signs and symptoms of RPLS. Withhold SUTENT until resolution. (5.10)
- Thyroid Dysfunction: Monitor thyroid function at baseline, periodically during treatment, and as clinically indicated. Initiate and/or adjust therapy for thyroid dysfunction as appropriate. (5.11)
- Hypoglycemia: Check blood glucose levels regularly and assess if antidiabetic drug dose modifications are required. (5.12)
- Osteonecrosis of the Jaw (ONJ): Withhold SUTENT for at least 3 weeks prior to invasive dental procedure and for development of ONJ until complete resolution. (5.13)
- Impaired Wound Healing: Withhold SUTENT for at least 3 weeks prior to elective surgery. Do not administer for at least 2 weeks following major surgery and until adequate wound healing. The safety of resumption of SUTENT after resolution of wound healing complications has not been established. (5.14)
- Embryo-Fetal Toxicity: Can cause fetal harm. Advise patients of potential risk to a fetus and to use effective contraception. (5.15, 8.1, 8.3)

----- ADVERSE REACTIONS -----

- The most common adverse reactions ($\geq 25\%$) are fatigue/asthenia, diarrhea, mucositis/stomatitis, nausea, decreased appetite/anorexia, vomiting, abdominal pain, hand-foot syndrome, hypertension, bleeding events, dysgeusia/altered taste, dyspepsia, and thrombocytopenia. (6)

To report SUSPECTED ADVERSE REACTIONS, contact Pfizer Inc. at 1-800-438-1985 or FDA at 1-800-FDA-1088 or www.fda.gov/medwatch.

----- DRUG INTERACTIONS -----

- CYP3A4 Inhibitors: Consider dose reduction of SUTENT when administered with strong CYP3A4 inhibitors. (7.1)
- CYP3A4 Inducers: Consider dose increase of SUTENT when administered with strong CYP3A4 inducers. (7.1)

----- USE IN SPECIFIC POPULATIONS -----

- Lactation: Advise not to breastfeed. (8.2)

See 17 for PATIENT COUNSELING INFORMATION and Medication Guide.

Revised: 10/2025

WARNING: HEPATOTOXICITY

1 INDICATIONS AND USAGE

- 1.1 Gastrointestinal Stromal Tumor
- 1.2 Advanced Renal Cell Carcinoma
- 1.3 Adjuvant Treatment of Renal Cell Carcinoma
- 1.4 Advanced Pancreatic Neuroendocrine Tumors

2 DOSAGE AND ADMINISTRATION

- 2.1 Recommended Dosage for GIST and Advanced RCC
- 2.2 Recommended Dosage for Adjuvant Treatment of RCC
- 2.3 Recommended Dosage for pNET
- 2.4 Dosage Modifications for Adverse Reactions
- 2.5 Dosage Modification for Drug Interactions
- 2.6 Dosage Modification for End-Stage Renal Disease Patients on Hemodialysis

3 DOSAGE FORMS AND STRENGTHS

4 CONTRAINDICATIONS

5 WARNINGS AND PRECAUTIONS

- 5.1 Hepatotoxicity
- 5.2 Cardiovascular Events
- 5.3 QT Interval Prolongation and Torsade de Pointes
- 5.4 Hypertension
- 5.5 Hemorrhagic Events and Viscus Perforation
- 5.6 Tumor Lysis Syndrome (TLS)
- 5.7 Thrombotic Microangiopathy (TMA)
- 5.8 Proteinuria
- 5.9 Dermatologic Toxicities
- 5.10 Reversible Posterior Leukoencephalopathy Syndrome (RPLS)
- 5.11 Thyroid Dysfunction
- 5.12 Hypoglycemia
- 5.13 Osteonecrosis of the Jaw (ONJ)
- 5.14 Impaired Wound Healing
- 5.15 Embryo-Fetal Toxicity

6 ADVERSE REACTIONS

- 6.1 Clinical Trials Experience
- 6.2 Postmarketing Experience

7 DRUG INTERACTIONS

- 7.1 Effect of Other Drugs on SUTENT
- 7.2 Drugs that Prolong QT Interval

8 USE IN SPECIFIC POPULATIONS

- 8.1 Pregnancy
- 8.2 Lactation
- 8.3 Females and Males of Reproductive Potential
- 8.4 Pediatric Use
- 8.5 Geriatric Use
- 8.6 Hepatic Impairment
- 8.7 Renal Impairment

10 OVERDOSAGE

11 DESCRIPTION

12 CLINICAL PHARMACOLOGY

- 12.1 Mechanism of Action
- 12.2 Pharmacodynamics

12.3 Pharmacokinetics

13 NONCLINICAL TOXICOLOGY

13.1 Carcinogenesis, Mutagenesis, Impairment of Fertility

14 CLINICAL STUDIES

14.1 Gastrointestinal Stromal Tumor

14.2 Renal Cell Carcinoma

14.3 Pancreatic Neuroendocrine Tumors

16 HOW SUPPLIED/STORAGE AND HANDLING

17 PATIENT COUNSELING INFORMATION

* Sections or subsections omitted from the full prescribing information are not listed.

FULL PRESCRIBING INFORMATION

WARNING: HEPATOTOXICITY

Hepatotoxicity may be severe, and in some cases, fatal. Monitor hepatic function and interrupt, dose reduce, or discontinue SUTENT as recommended [see *Warnings and Precautions* (5.1)].

1 INDICATIONS AND USAGE

1.1 Gastrointestinal Stromal Tumor

SUTENT is indicated for the treatment of adult patients with gastrointestinal stromal tumor (GIST) after disease progression on or intolerance to imatinib mesylate.

1.2 Advanced Renal Cell Carcinoma

SUTENT is indicated for the treatment of adult patients with advanced renal cell carcinoma (RCC).

1.3 Adjuvant Treatment of Renal Cell Carcinoma

SUTENT is indicated for the adjuvant treatment of adult patients at high risk of recurrent RCC following nephrectomy.

1.4 Advanced Pancreatic Neuroendocrine Tumors

SUTENT is indicated for the treatment of progressive, well-differentiated pancreatic neuroendocrine tumors (pNET) in adult patients with unresectable locally advanced or metastatic disease.

2 DOSAGE AND ADMINISTRATION

2.1 Recommended Dosage for GIST and Advanced RCC

The recommended dosage of SUTENT for gastrointestinal stromal tumor (GIST) and advanced renal cell carcinoma (RCC) is 50 mg taken orally once daily, on a schedule of 4 weeks on treatment followed by 2 weeks off (Schedule 4/2) until disease progression or unacceptable toxicity. SUTENT may be taken with or without food.

2.2 Recommended Dosage for Adjuvant Treatment of RCC

The recommended dosage of SUTENT for the adjuvant treatment of RCC is 50 mg taken orally once daily, on a schedule of 4 weeks on treatment followed by 2 weeks off (Schedule 4/2), for nine 6-week cycles. SUTENT may be taken with or without food.

2.3 Recommended Dosage for pNET

The recommended dosage of SUTENT for pancreatic neuroendocrine tumors (pNET) is 37.5 mg taken orally once daily until disease progression or unacceptable toxicity. SUTENT may be taken with or without food.

2.4 Dosage Modifications for Adverse Reactions

To manage adverse reactions, the recommended dosage modifications are provided in Table 1. Table 2 provides the recommended dosage reductions of SUTENT for adverse reactions.

Table 1. Recommended Dosage Reductions of SUTENT for Adverse Reactions

Indications	GIST	RCC		pNET
		Advanced RCC	Adjuvant RCC	
First dose reduction	37.5 mg once daily	37.5 mg once daily	37.5 mg once daily	25 mg once daily
Second dose reduction	25 mg once daily	25 mg once daily	NA	NA

Table 2. Recommended Dosage Modifications for SUTENT for Adverse Reactions

Adverse Reaction	Severity	Dosage Modifications for SUTENT
Hepatotoxicity [see <i>Warnings and Precautions (5.1)</i>]	Grade 3	<ul style="list-style-type: none"> Withhold until resolution to Grade 0 to 1 or baseline. Resume at a reduced dose. For recurring Grade 3 permanently discontinue.
	Grade 4	<ul style="list-style-type: none"> Permanently discontinue.
Cardiovascular events [see <i>Warnings and Precautions (5.2)</i>]	Asymptomatic cardiomyopathy (left ventricular ejection fraction greater than 20% but less than 50%)	<ul style="list-style-type: none"> Withhold until resolution to Grade 0 to 1 or baseline. Resume at reduced dose.

	below baseline or below the lower limit of normal if baseline was not obtained)	
	Clinically manifested congestive heart failure (CHF)	<ul style="list-style-type: none"> • Permanently discontinue.
Hypertension [see Warnings and Precautions (5.4)]	Grade 3	<ul style="list-style-type: none"> • Withhold until resolution to Grade 0 to 1 or baseline. • Resume at a reduced dose.
	Grade 4	<ul style="list-style-type: none"> • Permanently discontinue.
Hemorrhagic events [see Warnings and Precautions (5.5)]	Grade 3 or 4	<ul style="list-style-type: none"> • Withhold until resolution to Grade 0 to 1 or baseline. • Either resume at a reduced dose or discontinue depending on the severity and persistence of adverse reaction.
Thrombotic microangiopathy [see Warnings and Precautions (5.7)]	Any Grade	<ul style="list-style-type: none"> • Permanently discontinue.
Proteinuria or Nephrotic syndrome [see Warnings and Precautions (5.8)]	3 or more grams proteinuria in 24 hours in the absence of nephrotic syndrome	<ul style="list-style-type: none"> • Withhold until resolution to Grade 0 to 1 or baseline. • Resume at a reduced dose.
	Nephrotic syndrome or recurrent proteinuria of 3 or more grams per 24 hours despite dose reductions	<ul style="list-style-type: none"> • Permanently discontinue.
Dermatological toxicities Erythema multiforme (EM), Stevens-Johnson syndrome (SJS), toxic epidermal necrolysis (TEN), Necrotizing fasciitis [see Warnings and Precautions (5.9)]	Any Grade	<ul style="list-style-type: none"> • Permanently discontinue.
Reversible posterior leukoencephalopathy syndrome [see Warnings and	Any Grade	<ul style="list-style-type: none"> • Permanently discontinue.

<i>Precautions (5.10)]</i>		
Osteonecrosis of the jaw <i>[see Warnings and Precautions (5.13)]</i>	Any Grade	<ul style="list-style-type: none"> • The safety of resumption of SUTENT after osteonecrosis has not been established. • Either resume at a reduced dose or discontinue depending on the severity and persistence of the adverse reaction.
Impaired wound healing <i>[see Warnings and Precautions (5.14)]</i>	Any Grade	<ul style="list-style-type: none"> • The safety of resumption of SUTENT after resolution of wound healing has not been established. • Either resume at a reduced dose or discontinue depending on the severity and persistence of the adverse reaction.

2.5 Dosage Modification for Drug Interactions

Strong CYP3A4 Inhibitors

Select an alternate concomitant medication with no or minimal enzyme inhibition potential. If coadministration of SUTENT with a strong CYP3A4 inhibitor cannot be avoided, consider a dose reduction for SUTENT to a minimum dosage as follows *[see Drug Interactions (7.1)]*:

- GIST and RCC: 37.5 mg orally once daily, on a schedule of 4 weeks on treatment followed by 2 weeks off (Schedule 4/2)
- pNET: 25 mg orally once daily

Strong CYP3A4 Inducers

Select an alternate concomitant medication with no or minimal enzyme induction potential. If coadministration of SUTENT with a strong CYP3A4 inducer cannot be avoided, consider a dose increase for SUTENT to a maximum dosage as follows:

- GIST and RCC: 87.5 mg orally once daily, on a schedule of 4 weeks on treatment followed by 2 weeks off (Schedule 4/2)
- pNET: 62.5 mg orally once daily

If the dose of SUTENT is increased, monitor patients carefully for adverse reactions *[see Drug Interactions (7.1)]*.

2.6 Dosage Modification for End-Stage Renal Disease Patients on Hemodialysis

No starting dose adjustment is required in patients with end-stage renal disease (ESRD) on hemodialysis. However, given the decreased exposure compared to patients with normal renal function, subsequent doses may be increased gradually up to 2-fold based on safety and tolerability *[see Clinical Pharmacology (12.3)]*.

3 DOSAGE FORMS AND STRENGTHS

Capsules, hard gelatin:

- 12.5 mg sunitinib: orange cap and orange body, printed with white ink “Pfizer” on the cap and “STN 12.5 mg” on the body.
- 25 mg sunitinib: caramel cap and orange body, printed with white ink “Pfizer” on the cap and “STN 25 mg” on the body.
- 37.5 mg sunitinib: yellow cap and yellow body, printed with black ink “Pfizer” on the cap and “STN 37.5 mg” on the body.
- 50 mg sunitinib: caramel top and caramel body, printed with white ink “Pfizer” on the cap and “STN 50 mg” on the body.

4 CONTRAINDICATIONS

None.

5 WARNINGS AND PRECAUTIONS

5.1 Hepatotoxicity

SUTENT can cause severe hepatotoxicity, resulting in liver failure or death. In the pooled safety population, liver failure occurred in <1% of patients in clinical trials. Liver failure include jaundiced, elevated transaminases and/or hyperbilirubinemia in conjunction with encephalopathy, coagulopathy, and/or renal failure.

Monitor liver function tests (alanine aminotransferase [ALT], aspartate aminotransferase [AST], and bilirubin) at baseline, during each cycle, and as clinically indicated. Interrupt SUTENT for Grade 3 hepatotoxicity until resolution to Grade ≤ 1 or baseline, then resume SUTENT at a reduced dose.

Discontinue SUTENT in patients with Grade 4 hepatotoxicity, in patients without resolution of Grade 3 hepatotoxicity, in patients who subsequently experience severe changes in liver function tests and in patients who have other signs and symptoms of liver failure. Safety in patients with ALT or AST $>2.5 \times$ upper limit of normal (ULN) or with $>5 \times$ ULN and liver metastases has not been established.

5.2 Cardiovascular Events

Cardiovascular events, including heart failure, cardiomyopathy, myocardial ischemia, and myocardial infarction, some of which were fatal, have been reported.

In pooled safety population, 3% of patients experienced heart failure; 71% of the patients with heart failure were reported as recovered. Fatal cardiac failure was reported in <1% of patients.

In the adjuvant treatment of RCC study, 11 patients experienced Grade 2 decreased ejection fraction (left ventricular ejection fraction [LVEF] 40% to 50% and a 10% to 19% decrease from baseline). In 3 of these 11 patients, the ejection fractions arm did not return to $\geq 50\%$ or baseline by the time of last measurement. No patients who received

SUTENT were diagnosed with CHF.

Patients who presented with cardiac events within 12 months prior to SUTENT administration, such as myocardial infarction (including severe/unstable angina), coronary/peripheral artery bypass graft, symptomatic CHF, cerebrovascular accident or transient ischemic attack, or pulmonary embolism were excluded from SUTENT clinical studies. Patients with prior anthracycline use or cardiac radiation were also excluded from some studies. It is unknown whether patients with these concomitant conditions may be at a higher risk of developing left ventricular dysfunction.

Consider monitoring LVEF at baseline and periodically as clinically indicated. Carefully monitor patients for clinical signs and symptoms of congestive heart failure (CHF). Discontinue SUTENT in patients who experience clinical manifestations of CHF. Interrupt SUTENT and/or reduce the dose in patients without clinical evidence of CHF who have an ejection fraction of greater than 20% but less than 50% below baseline or below the lower limit of normal if baseline ejection fraction was not obtained.

5.3 QT Interval Prolongation and Torsade de Pointes

SUTENT can cause QT interval prolongation in a dose-dependent manner, which may lead to an increased risk for ventricular arrhythmias including Torsade de Pointes. Torsade de Pointes was observed in <0.1% of patients.

Monitor patients who are at higher risk of developing QT interval prolongation, including patients with a history of QT interval prolongation, patients who are taking antiarrhythmics, or patients with relevant pre-existing cardiac disease, bradycardia, or electrolyte disturbances. Consider periodic monitoring of electrocardiograms and electrolytes (i.e., magnesium, potassium) during treatment with SUTENT.

Monitor QT interval more frequently when SUTENT is concomitantly administered with strong CYP3A4 inhibitors or drugs known to prolong QT interval. Consider dose reducing SUTENT [*see Dosage and Administration (2.5), Drug Interactions (7.2)*].

5.4 Hypertension

In the pooled safety population, 29% of patients experienced hypertension. Grade 3 hypertension was reported in 7% of patients, and Grade 4 hypertension was reported in 0.2%.

Monitor blood pressure at baseline and as clinically indicated. Initiate and/or adjust antihypertensive therapy as appropriate. In cases of Grade 3 hypertension, withhold SUTENT until resolution to Grade ≤ 1 or baseline, then resume SUTENT at a reduced dose. Discontinue SUTENT in patients with who develop Grade 4 hypertension.

5.5 Hemorrhagic Events and Viscus Perforation

Hemorrhagic events, some of which were fatal, have involved the gastrointestinal tract, respiratory tract, tumor, urinary tract, and brain. In the pooled safety population, 30% of patients experienced hemorrhagic events, including Grade 3 or 4 in 4.2% of patients. Epistaxis was the most common hemorrhagic event and gastrointestinal hemorrhage was the most common Grade 3–5 event.

Tumor-related hemorrhage was observed in patients treated with SUTENT. These events may occur suddenly, and in the case of pulmonary tumors, may present as severe and

life-threatening hemoptysis or pulmonary hemorrhage. Pulmonary hemorrhage, some with a fatal outcome, was observed in patients treated with SUTENT for metastatic RCC, GIST, and metastatic lung cancer. SUTENT is not approved for use in patients with lung cancer.

Serious, sometimes fatal, gastrointestinal complications including gastrointestinal perforation, have been reported in patients with intra-abdominal malignancies treated with SUTENT.

Include serial complete blood counts (CBCs) and physical examinations with the clinical assessment of hemorrhagic events. Interrupt SUTENT for Grade 3 or 4 hemorrhagic events until resolution to Grade ≤ 1 or baseline, then resume SUTENT at a reduced dose.

Discontinue SUTENT in patients without resolution of Grade 3 or 4 hemorrhagic events.

5.6 Tumor Lysis Syndrome (TLS)

Tumor Lysis Syndrome (TLS), some fatal, occurred in clinical trials and has been reported in postmarketing experience, primarily in patients with RCC or GIST. Patients generally at risk of TLS are those with high tumor burden prior to treatment. Monitor these patients for TLS and manage as appropriate.

5.7 Thrombotic Microangiopathy (TMA)

Thrombotic Microangiopathy (TMA), including thrombotic thrombocytopenic purpura and hemolytic uremic syndrome, sometimes leading to renal failure or a fatal outcome, occurred in clinical trials and in postmarketing experience of SUTENT as monotherapy and administered in combination with bevacizumab. SUTENT is not approved for use in combination with bevacizumab.

Discontinue SUTENT in patients developing TMA. Reversal of the effects of TMA has been observed after SUTENT was discontinued.

5.8 Proteinuria

Proteinuria and nephrotic syndrome have been reported. Some of these cases have resulted in renal failure and fatal outcomes.

Monitor patients for the development or worsening of proteinuria. Perform baseline and periodic urinalyses during treatment, with follow up measurement of 24-hour urine protein as clinically indicated. Interrupt SUTENT and dose reduce for 24-hour urine protein of 3 or more grams. Discontinue SUTENT for patients with nephrotic syndrome or repeat episodes of 24-hour urine protein of 3 or more grams despite dose reductions. The safety of continued SUTENT treatment in patients with moderate to severe proteinuria has not been evaluated.

5.9 Dermatologic Toxicities

Severe cutaneous adverse reactions have been reported, including erythema multiforme (EM), Stevens-Johnson syndrome (SJS), and toxic epidermal necrolysis (TEN), some of which were fatal. Permanently discontinue SUTENT for these severe cutaneous adverse reactions.

Necrotizing fasciitis, including fatal cases, has been reported in patients treated with SUTENT, including of the perineum and secondary to fistula formation. Discontinue

SUTENT in patients who develop necrotizing fasciitis.

5.10 Reversible Posterior Leukoencephalopathy Syndrome (RPLS)

Reversible posterior leukoencephalopathy syndrome (RPLS) has been reported in <1% of patients, some of which were fatal. Patients can present with hypertension, headache, decreased alertness, altered mental functioning, and visual loss, including cortical blindness. Magnetic resonance imaging is necessary to confirm the diagnosis. Discontinue SUTENT in patients developing RPLS.

5.11 Thyroid Dysfunction

Hyperthyroidism, some followed by hypothyroidism, have been reported in clinical trials and through postmarketing experience of SUTENT.

Monitor thyroid function at baseline, periodically during treatment and as clinically indicated. Monitor patients closely for signs and symptoms of thyroid dysfunction, including hypothyroidism, hyperthyroidism, and thyroiditis, during treatment with SUTENT. Initiate and/or adjust therapies for thyroid dysfunction as appropriate.

5.12 Hypoglycemia

SUTENT can result in symptomatic hypoglycemia, which may lead to loss of consciousness, or require hospitalization. In the pooled safety population, hypoglycemia occurred in 2% of the patients treated with SUTENT. Hypoglycemia has occurred in clinical trials in 2% of the patients treated with SUTENT for advanced RCC (Study 3) and GIST (Study 1) (n=577) and in approximately 10% of the patients treated with SUTENT for pNET (Study 6) (n=83). For patients being treated with SUTENT for pNET, pre-existing abnormalities in glucose homeostasis were not present in all patients who experienced hypoglycemia. Reductions in blood glucose levels may be worse in patients with diabetes.

Check blood glucose levels at baseline, regularly during treatment, as clinically indicated and after discontinuation of SUTENT. In patients with diabetes, assess if antidiabetic therapies need to be adjusted to minimize the risk of hypoglycemia.

5.13 Osteonecrosis of the Jaw (ONJ)

Osteonecrosis of the Jaw (ONJ) occurred in patients treated with SUTENT. Concomitant exposure to other risk factors, such as bisphosphonates or dental disease/invasive dental procedures, may increase the risk of ONJ. Perform an oral examination prior to initiation of SUTENT and periodically during SUTENT therapy. Advise patients regarding good oral hygiene practices. Withhold SUTENT treatment for at least 3 weeks prior to scheduled dental surgery or invasive dental procedures, if possible. Withhold SUTENT for development of ONJ until complete resolution. The safety of resumption of SUTENT after resolution of osteonecrosis of the jaw has not been established.

5.14 Impaired Wound Healing

Impaired wound healing has been reported in patients who received SUTENT [see *Adverse Reactions* (6.2)].

Withhold SUTENT for at least 3 weeks prior to elective surgery. Do not administer for at least 2 weeks following major surgery and until adequate wound healing. The safety of

resumption of SUTENT after resolution of wound healing complications has not been established.

5.15 Embryo-Fetal Toxicity

Based on findings from animal studies and its mechanism of action, SUTENT can cause fetal harm when administered to pregnant woman. Administration of sunitinib to pregnant rats and rabbits during the period of organogenesis resulted in teratogenicity at approximately 5.5 and 0.3 times the combined systemic exposure [combined area under the curve (AUC) of sunitinib plus its active metabolite] in patients administered the recommended daily dose (RDD) of 50 mg, respectively.

Advise pregnant women of the potential risk to a fetus. Advise females of reproductive potential to use effective contraception during treatment with SUTENT and for 4 weeks following the final dose [see *Use in Specific Populations* (8.1, 8.3)].

6 ADVERSE REACTIONS

The following clinically significant adverse reactions are described elsewhere in the labeling.

- Hepatotoxicity [see *Warnings and Precautions* (5.1)]
- Cardiovascular Events [see *Warnings and Precautions* (5.2)]
- QT Interval Prolongation and Torsade de Pointes [see *Warnings and Precautions* (5.3)]
- Hypertension [see *Warnings and Precautions* (5.4)]
- Hemorrhagic Events [see *Warnings and Precautions* (5.5)]
- Tumor Lysis Syndrome [see *Warnings and Precautions* (5.6)]
- Thrombotic Microangiopathy [see *Warnings and Precautions* (5.7)]
- Proteinuria [see *Warnings and Precautions* (5.8)]
- Dermatologic Toxicities [see *Warnings and Precautions* (5.9)]
- Reversible Posterior Leukoencephalopathy Syndrome [see *Warnings and Precautions* (5.10)]
- Thyroid Dysfunction [see *Warnings and Precautions* (5.11)]
- Hypoglycemia [see *Warnings and Precautions* (5.12)]
- Osteonecrosis of the Jaw [see *Warnings and Precautions* (5.13)]
- Impaired Wound Healing [see *Warnings and Precautions* (5.14)]

6.1 Clinical Trials Experience

Because clinical trials are conducted under widely varying conditions, adverse reaction rates observed in the clinical trials of a drug cannot be directly compared to rates in the clinical trials of another drug and may not reflect the rates observed in practice.

The pooled safety population described in the Warnings and Precautions reflect exposure to SUTENT in 7527 patients with GIST, RCC (advanced and adjuvant), or pNET. In this pooled safety population, the most common adverse reactions ($\geq 25\%$) were fatigue/asthenia, diarrhea, mucositis/stomatitis, nausea, decreased appetite/anorexia, vomiting, abdominal pain, hand-foot syndrome, hypertension, bleeding events, dysgeusia/altered taste, dyspepsia, and thrombocytopenia.

Gastrointestinal Stromal Tumor

The safety of SUTENT was evaluated in Study 1, a randomized, double-blind, placebo-controlled trial in which previously treated patients with GIST received SUTENT 50 mg daily on Schedule 4/2 (n=202) or placebo (n=102). Median duration of blinded study treatment was 2 cycles for patients on SUTENT (mean: 3.0; range: 1-9) and 1 cycle (mean; 1.8; range: 1-6) for patients on placebo at the time of the interim analysis.

Permanent discontinuation due to an adverse reaction occurred in 7% of patients in the SUTENT arm. Dose reductions occurred in 11% and dose interruptions occurred in 29% of patients who received SUTENT.

Table 3 summarizes the adverse reactions for Study 1.

Table 3. Adverse Reactions Reported in $\geq 10\%$ of GIST Patients Who Received SUTENT in the Double-Blind Treatment Phase and More Commonly Than in Patients Given Placebo* in Study 1

Adverse Reaction	GIST			
	SUTENT (N=202)		Placebo (N=102)	
	All Grades %	Grade 3-4 %	All Grades %	Grade 3-4 %
Any Adverse Reaction	94	56	97	51
Gastrointestinal				
Diarrhea	40	4	27	0
Mucositis/stomatitis	29	1	18	2
Constipation	20	0	14	2
Metabolism/Nutrition				
Anorexia†	33	1	29	5
Asthenia	22	5	11	3
Dermatology				
Skin discoloration	30	0	23	0
Rash	14	1	9	0
Hand-foot syndrome	14	4	10	3
Neurology				
Altered taste	21	0	12	0
Cardiac				
Hypertension	15	4	11	0
Musculoskeletal				
Myalgia/limb pain	14	1	9	1

Abbreviations: GIST=gastrointestinal stromal tumor; N=number of patients.

* Common Terminology Criteria for Adverse Events (CTCAE), version 3.0.

† Includes decreased appetite.

Other clinically relevant adverse reactions included oral pain other than mucositis/stomatitis in 6%; hair color changes in 7%; alopecia in 5% of patients who received SUTENT.

Table 4 summarizes the laboratory abnormalities in Study 1.

Table 4. Laboratory Abnormalities Reported in $\geq 10\%$ of GIST Patients Who

Received SUTENT or Placebo in the Double-Blind Treatment Phase* in Study 1

Laboratory Abnormality	GIST			
	SUTENT (N=202)		Placebo (N=102)	
	All Grades* %	Grade 3-4*,† %	All Grades* %	Grade 3-4*,‡ %
Any Laboratory Abnormality		34		22
Hematology				
Neutrophils decreased	53	10	4	0
Lymphocytes decreased	38	0	16	0
Platelets decreased	38	5	4	0
Hemoglobin decreased	26	3	22	2
Gastrointestinal				
AST/ALT increased	39	2	23	1
Lipase increased	25	10	17	7
Alkaline phosphatase increased	24	4	21	4
Amylase increased	17	5	12	3
Total bilirubin increased	16	1	8	0
Indirect bilirubin increased	10	0	4	0
Renal/Metabolic				
Creatinine increased	12	1	7	0
Potassium decreased	12	1	4	0
Sodium increased	10	0	4	1
Cardiac				
Decreased LVEF	11	1	3	0

Abbreviations: ALT=alanine aminotransferase; AST=aspartate aminotransferase; GIST=gastrointestinal stromal tumor; LVEF=left ventricular ejection fraction; N=number of patients.

* Common Terminology Criteria for Adverse Events (CTCAE), version 3.0.

† Grade 4 laboratory abnormalities in patients on SUTENT included alkaline phosphatase (1%), lipase (2%), creatinine (1%), potassium decreased (1%), neutrophils (2%), hemoglobin (2%), and platelets (1%).

‡ Grade 4 laboratory abnormalities in patients on placebo included amylase (1%), lipase (1%), and hemoglobin (2%).

After an interim analysis, the study was unblinded and patients on the placebo arm were given the opportunity to receive open-label SUTENT [see *Clinical Studies (14.1)*]. For 241 patients randomized to the SUTENT arm, including 139 who received SUTENT in both the double-blind and open-label phases, the median duration of SUTENT treatment was 6 cycles (mean: 8.5; range: 1–44). For the 255 patients who ultimately received open-label SUTENT treatment, median duration of treatment was 6 cycles (mean: 7.8; range: 1–37) from the time of the unblinding.

Permanent discontinuation due to an adverse reaction occurred in 20% of patients who received SUTENT. Dosage interruption occurred in 46% and dose reduction occurred in 28% of patients who received SUTENT.

The most common Grade 3 or 4 adverse reactions in patients who received SUTENT in the open-label phase were fatigue (10%), hypertension (8%), asthenia (5%), diarrhea (5%), hand-foot syndrome (5%), nausea (4%), abdominal pain (3%), anorexia (3%), mucositis (2%), vomiting (2%), and hypothyroidism (2%).

Advanced Renal Cell Carcinoma

The safety of SUTENT was evaluated in Study 3, a double-blind, active-controlled trial in which previously untreated patients with locally advanced or metastatic RCC received SUTENT 50 mg daily on Schedule 4/2 (n=375) or interferon alfa 9 million International Units (MIU) (n=360). The median duration of treatment was 11.1 months (range: 0.4 to 46.1) for SUTENT treatment and 4.1 months (range: 0.1 to 45.6) for interferon alfa treatment.

Permanent discontinuation due to an adverse reaction occurred in 20% of patients in the SUTENT arm. Dose interruptions occurred in 54% and dose reductions occurred in 52% of patients who received SUTENT.

Table 5 summarizes the adverse reactions for Study 3.

Table 5. Adverse Reactions Reported in $\geq 10\%$ of Patients With RCC Who Received SUTENT or Interferon Alfa* in Study 3

Adverse Reaction	Treatment-Naïve RCC			
	SUTENT (N=375)		Interferon Alfa (N=360)	
	All Grades %	Grade 3-4 [†] %	All Grades %	Grade 3-4 [‡] %
Any Adverse Reaction	99	77	99	55
Gastrointestinal				
Diarrhea	66	10	21	<1
Nausea	58	6	41	2
Mucositis/stomatitis	47	3	5	<1
Vomiting	39	5	17	1
Dyspepsia	34	2	4	0
Abdominal pain [§]	30	5	12	1
Constipation	23	1	14	<1
Dry mouth	13	0	7	<1
Oral pain	14	<1	1	0
Flatulence	14	0	2	0
GERD/reflux	12	<1	1	0
esophagitis				
Glossodynia	11	0	1	0
Hemorrhoids	10	0	2	0
Constitutional				
Fatigue	62	15	56	15

Asthenia	26	11	22	6
Fever	22	1	37	<1
Weight decreased	16	<1	17	1
Chills	14	1	31	0
Chest Pain	13	2	7	1
Influenza like illness	5	0	15	<1
Metabolism/Nutrition				
Anorexia [¶]	48	3	42	2
Neurology				
Altered taste [#]	47	<1	15	0
Headache	23	1	19	0
Dizziness	11	<1	14	1
Hemorrhage/Bleeding				
Bleeding, all sites	37	4 ^b	10	1
Cardiac				
Hypertension	34	13	4	<1
Edema peripheral	24	2	5	1
Ejection fraction decreased	16	3	5	2
Dermatology				
Rash	29	2	11	<1
Hand-foot syndrome	29	8	1	0
Skin discoloration/yellow skin	25	<1	0	0
Dry skin	23	<1	7	0
Hair color changes	20	0	<1	0
Alopecia	14	0	9	0
Erythema	12	<1	1	0
Pruritus	12	<1	7	<1
Musculoskeletal				
Pain in extremity/limb discomfort	40	5	30	2
Arthralgia	30	3	19	1
Back pain	28	5	14	2
Respiratory				
Cough	27	1	14	<1
Dyspnea	26	6	20	4
Nasopharyngitis	14	0	2	0
Oropharyngeal pain	14	<1	2	0
Upper respiratory tract infection	11	<1	2	0
Endocrine				
Hypothyroidism	16	2	1	0
Psychiatric				
Insomnia	15	<1	10	0
Depression ^β	11	0	14	1

Abbreviations: ARs=adverse reactions; N=number of patients; RCC=renal cell carcinoma.

* Common Terminology Criteria for Adverse Events (CTCAE), version 3.0.

† Grade 4 ARs in patients on SUTENT included back pain (1%), arthralgia (<1%), dyspnea (<1%), asthenia (<1%), fatigue (<1%), limb pain (<1%), and rash (<1%).

‡ Grade 4 ARs in patients on interferon alfa included dyspnea (1%), fatigue (1%), abdominal pain (<1%), and depression (<1%).

§ Includes flank pain.

¶ Includes decreased appetite.

Includes ageusia, hypogeusia, and dysgeusia.

Ⓟ Includes 1 patient with Grade 5 gastric hemorrhage.

Ⓡ Includes depressed mood.

Table 6 summarizes the laboratory abnormalities in Study 3.

Table 6. Laboratory Abnormalities Reported in ≥10% of RCC Patients Who Received SUTENT or Interferon Alfa in Study 3

Laboratory Abnormality	Treatment-Naïve RCC			
	SUTENT (N=375)		Interferon Alfa (N=360)	
	All Grades* %	Grade 3-4*,† %	All Grades* %	Grade 3-4*,‡ %
Hematology				
Hemoglobin decreased	79	8	69	5
Neutrophils decreased	77	17	49	9
Platelets decreased	68	9	24	1
Lymphocytes decreased	68	18	68	26
Renal/Metabolic				
Creatinine increased	70	<1	51	<1
Creatine kinase increased	49	2	11	1
Uric acid increased	46	14	33	8
Calcium decreased	42	1	40	1
Phosphorus decreased	31	6	24	6
Albumin decreased	28	1	20	0
Glucose increased	23	6	15	6
Sodium decreased	20	8	15	4
Glucose decreased	17	0	12	<1
Potassium increased	16	3	17	4
Calcium increased	13	<1	10	1
Potassium decreased	13	1	2	<1
Sodium increased	13	0	10	0
Gastrointestinal				
AST increased	56	2	38	2
Lipase increased	56	18	46	8

ALT increased	51	3	40	2
Alkaline phosphatase increased	46	2	37	2
Amylase increased	35	6	32	3
Total bilirubin increased	20	1	2	0
Indirect bilirubin increased	13	1	1	0

Abbreviations: ALT=alanine aminotransferase; AST=aspartate aminotransferase; N=number of patients; RCC=renal cell carcinoma.

* Common Terminology Criteria for Adverse Events (CTCAE), version 3.0.

† Grade 4 laboratory abnormalities in patients on SUTENT included uric acid (14%), lipase (3%), neutrophils (2%), lymphocytes (2%), hemoglobin (2%), platelets (1%), amylase (1%), ALT (<1%), creatine kinase (<1%), creatinine (<1%), glucose increased (<1%), calcium decreased (<1%), phosphorous (<1%), potassium increased (<1%), and sodium decreased (<1%).

‡ Grade 4 laboratory abnormalities in patients on interferon alfa included uric acid (8%), lymphocytes (2%), lipase (1%), neutrophils (1%), amylase (<1%), calcium increased (<1%), glucose decreased (<1%), potassium increased (<1%), and hemoglobin (<1%).

Long-Term Safety in RCC

The long-term safety of SUTENT in patients with metastatic RCC was analyzed across 9 completed clinical studies conducted in the first-line, bevacizumab-refractory, and cytokine-refractory treatment settings. The analysis included 5739 patients, of whom 807 (14%) were treated for at least 2 years and 365 (6%) for at least 3 years. Prolonged treatment with SUTENT did not appear to be associated with new types of adverse reactions. There appeared to be no increase in the yearly incidence of adverse reactions at later time points. Hypothyroidism increased during the second year of treatment with new cases reported up to year 4.

Adjuvant Treatment of RCC

The safety of SUTENT was evaluated in S-TRAC, a randomized, double-blind, placebo-controlled trial in which patients who had undergone nephrectomy for RCC received SUTENT 50 mg daily on Schedule 4/2 (n=306) or placebo (n=304). The median duration of treatment was 12.4 months (range: 0.13 to 14.9) for SUTENT and 12.4 months (range: 0.03 to 13.7) for placebo.

Permanent discontinuation due to an adverse reaction occurred in 28% of patients in the SUTENT arm. Adverse reactions leading to permanent discontinuation in >2% of patients include hand-foot syndrome and fatigue/asthenia. Dosing interruptions occurred in 54% and dose reductions occurred in 46% of patients who received SUTENT.

Table 7 summarizes the adverse reactions in S-TRAC.

Table 7. Adverse Reactions Reported in ≥10% of Patients With RCC Who Received SUTENT and More Commonly Than in Patients Given Placebo* in S-TRAC

	Adjuvant Treatment of RCC			
	SUTENT (N=306)		Placebo (N=304)	
	All Grades	Grade 3-4	All Grades	Grade 3-4

Adverse Reaction	%	%	%	%
Any Adverse Reaction	99	60	88	15
Gastrointestinal				
Mucositis/Stomatitis [†]	61	6	15	0
Diarrhea	57	4	22	<1
Nausea	34	2	15	0
Dyspepsia	27	1	7	0
Abdominal pain [‡]	25	2	9	<1
Vomiting	19	2	7	0
Constipation	12	0	11	0
Constitutional				
Fatigue/Asthenia	57	8	34	2
Localized edema [§]	18	<1	<1	0
Pyrexia	12	<1	6	0
Dermatology				
Hand-foot syndrome	50	16	10	<1
Rash [¶]	24	2	12	0
Hair color changes	22	0	2	0
Skin discoloration/Yellow skin	18	0	1	0
Dry skin	14	0	6	0
Cardiac				
Hypertension [#]	39	8	14	1
Edema/Peripheral edema	10	<1	7	0
Neurology				
Altered taste ^p	38	<1	6	0
Headache	19	<1	12	0
Endocrine				
Hypothyroidism/TSH increased	24	<1	4	0
Hemorrhage/Bleeding				
Bleeding events, all sites ^β	24	<1	5	<1
Metabolism/Nutrition				
Anorexia/Decreased appetite	19	<1	5	0
Musculoskeletal				
Pain in extremity	15	<1	7	0
Arthralgia	11	<1	10	0

Abbreviations: ARs=adverse reactions; N=number of patients; RCC=renal cell carcinoma.

* Common Terminology Criteria for Adverse Events (CTCAE), version 3.0.

† Includes mucosal inflammation, stomatitis aphthous ulcer, mouth ulceration, tongue ulceration, oropharyngeal pain, and oral pain.

‡ Includes abdominal pain, abdominal pain lower, and abdominal pain upper.

- § Includes edema localized, face edema, eyelid edema, periorbital edema, swelling face, and eye edema.
- ¶ Includes dermatitis, dermatitis psoriasiform, exfoliative rash, genital rash, rash, rash erythematous, rash follicular, rash generalized, rash macular, rash maculopapular, rash papular, and rash pruritic.
- # Includes hypertension, blood pressure increased, blood pressure systolic increased, blood pressure diastolic increased, and hypertensive crisis.
- ♯ Includes ageusia, hypogeusia, and dysgeusia.
- β Includes epistaxis, gingival bleeding, rectal hemorrhage, hemoptysis, anal hemorrhage, upper gastrointestinal hemorrhage, and hematuria.

Grade 4 adverse reactions in patients on SUTENT included hand-foot syndrome (1%), fatigue (<1%), abdominal pain (< 1%), stomatitis (<1%), and pyrexia (< 1%).

Grade 3–4 laboratory abnormalities that occurred in $\geq 2\%$ of patients receiving SUTENT include neutropenia (13%), thrombocytopenia (5%), leukopenia (3%), lymphopenia (3%), elevated alanine aminotransferase (2%), elevated aspartate aminotransferase (2%), hyperglycemia (2%), and hyperkalemia (2%).

Advanced Pancreatic Neuroendocrine Tumors

The safety of SUTENT was evaluated in Study 6, a randomized, double-blind, placebo-controlled trial in which patients with progressive pNET received SUTENT 37.5 mg once daily (n=83) or placebo (n=82). The median number of days on treatment was 139 days (range: 13–532 days) for patients on SUTENT and 113 days (range: 1–614 days) for patients on placebo. Nineteen patients (23%) on SUTENT and 4 patients (5%) on placebo were on study for >1 year.

Permanent discontinuation due to an adverse reaction occurred in 22% in the SUTENT arm. Dose interruptions occurred in 30% and dose reductions occurred in 31% of patients who received SUTENT.

Table 8 summarizes the adverse reactions in Study 6.

Table 8. Adverse Reactions Reported in $\geq 10\%$ of Patients With pNET Who Received SUTENT and More Commonly Than in Patients Given Placebo* in Study 6

Adverse Reaction	pNET			
	SUTENT (N=83)		Placebo (N=82)	
	All Grades %	Grade 3–4 [†] %	All Grades %	Grade 3–4 %
Any Adverse Reaction	99	54	95	50
Gastrointestinal				
Diarrhea	59	5	39	2
Stomatitis/oral syndromes [‡]	48	6	18	0
Nausea	45	1	29	1
Abdominal pain [§]	39	5	34	10
Vomiting	34	0	31	2
Dyspepsia	15	0	6	0
Constitutional				

Asthenia	34	5	27	4
Fatigue	33	5	27	9
Weight decreased	16	1	11	0
Dermatology				
Hair color changes	29	1	1	0
Hand-foot syndrome	23	6	2	0
Rash	18	0	5	0
Dry skin	15	0	11	0
Cardiac				
Hypertension	27	10	5	1
Hemorrhage/Bleeding				
Bleeding events [¶]	22	0	10	4
Epistaxis	21	1	5	0
Neurology				
Dysgeusia	21	0	5	0
Headache	18	0	13	1
Psychiatric				
Insomnia	18	0	12	0
Musculoskeletal				
Arthralgia	15	0	6	0

Abbreviations: N=number of patients; pNET=pancreatic neuroendocrine tumors.

* Common Terminology Criteria for Adverse Events (CTCAE), version 3.0.

† Grade 4 adverse reactions in patients on SUTENT included fatigue (1%).

‡ Includes aphthous stomatitis, gingival pain, gingivitis, glossitis, glossodynia, mouth ulceration, oral discomfort, oral pain, tongue ulceration, mucosal dryness, mucosal inflammation, and dry mouth.

§ Includes abdominal discomfort, abdominal pain, and abdominal pain upper.

¶ Includes hematemesis, hematochezia, hematoma, hemoptysis, hemorrhage, melena, and metrorrhagia.

Table 9 summarizes the laboratory abnormalities in Study 6.

Table 9. Laboratory Abnormalities Reported in ≥10% of Patients With pNET Who Received SUTENT in Study 6

Laboratory Abnormality	pNET			
	SUTENT		Placebo	
	All Grades* %	Grade 3-4*,† %	All Grades* %	Grade 3-4*,‡ %
Gastrointestinal				
AST increased	72	5	70	3
Alkaline phosphatase increased	63	10	70	11
ALT increased	61	4	55	3
Total bilirubin increased	37	1	28	4
Amylase increased	20	4	10	1
Lipase increased	17	5	11	4
Hematology				
Neutrophils decreased	71	16	16	0

Hemoglobin decreased	65	0	55	1
Platelets decreased	60	5	15	0
Lymphocytes decreased	56	7	35	4
Renal/Metabolic				
Glucose increased	71	12	78	18
Albumin decreased	41	1	37	1
Phosphorus decreased	36	7	22	5
Calcium decreased	34	0	19	0
Sodium decreased	29	2	34	3
Creatinine increased	27	5	28	5
Glucose decreased	22	2	15	4
Potassium decreased	21	4	14	0
Magnesium decreased	19	0	10	0
Potassium increased	18	1	11	1

Abbreviations: ALT=alanine aminotransferase; AST=aspartate aminotransferase; N=number of patients; pNET=pancreatic neuroendocrine tumors.

* The denominator used to calculate the rate varied from 52 to 82 for SUTENT and 39 to 80 for Placebo based on the number of patients with a baseline value and at least one post-treatment value. Common Terminology Criteria for Adverse Events (CTCAE), version 3.0.

† Grade 4 laboratory abnormalities in patients on SUTENT included creatinine (4%), lipase (4%), glucose decreased (2%), glucose increased (2%), neutrophils (2%), ALT (1%), AST (1%), platelets (1%), potassium increased (1%), and total bilirubin (1%).

‡ Grade 4 laboratory abnormalities in patients on placebo included creatinine (3%), alkaline phosphatase (1%), glucose increased (1%), and lipase (1%).

Venous Thromboembolic Events

In pooled safety population, 3.5% of patients experienced a venous thromboembolic event, including Grade 3–4 in 2.2% of patients.

Pancreatic Function

Pancreatitis was observed in 1 patient (1%) in the pNET study, 5 patients (1%) in the treatment-naïve RCC study, and 1 patient (<1%) in the adjuvant treatment for RCC study on SUTENT.

6.2 Postmarketing Experience

The following adverse reactions have been identified during postapproval use of SUTENT. Because these reactions are reported voluntarily from a population of uncertain size, it is not always possible to reliably estimate their frequency or establish a causal relationship to drug exposure.

- *Blood and lymphatic system disorders:* hemorrhage associated with thrombocytopenia¹.
- *Gastrointestinal disorders:* esophagitis.
- *Hepatobiliary disorders:* cholecystitis, particularly acalculous cholecystitis.
- *Immune system disorders:* hypersensitivity reactions, including angioedema.
- *Infections and infestations:* serious infection (with or without neutropenia)¹. The infections most commonly observed with SUTENT include respiratory, urinary tract, skin infections, and sepsis/septic shock.

- *Musculoskeletal and connective tissue disorders*: fistula formation, sometimes associated with tumor necrosis and/or regression¹; myopathy and/or rhabdomyolysis with or without acute renal failure¹.
- *Renal and urinary disorders*: renal impairment and/or failure¹.
- *Respiratory disorders*: pulmonary embolism¹, pleural effusion¹.
- *Skin and subcutaneous tissue disorders*: pyoderma gangrenosum, including positive de-challenges.
- *Vascular disorders*: arterial (including aortic) aneurysms, dissections¹, and rupture¹; arterial thromboembolic events¹. The most frequent events included cerebrovascular accident, transient ischemic attack, and cerebral infarction.
- *General disorders and administration site conditions*: impaired wound healing.

¹ including some fatalities

7 DRUG INTERACTIONS

7.1 Effect of Other Drugs on SUTENT

Strong CYP3A4 Inhibitors

Co-administration with strong CYP3A4 inhibitors may **increase** sunitinib plasma concentrations [see *Clinical Pharmacology (12.3)*]. Select an alternate concomitant medication with no or minimal enzyme inhibition potential. Consider a dose reduction for SUTENT when it is co-administered with strong CYP3A4 inhibitors [see *Dosage and Administration (2.5)*].

Strong CYP3A4 Inducers

Co-administration with strong CYP3A4 inducers may **decrease** sunitinib plasma concentrations [see *Clinical Pharmacology (12.3)*]. Select an alternate concomitant medication with no or minimal enzyme induction potential. Consider a dose increase for SUTENT when it must be co-administered with CYP3A4 inducers [see *Dosage and Administration (2.5)*].

7.2 Drugs that Prolong QT Interval

SUTENT is associated with QTc interval prolongation [see *Warnings and Precautions (5.3)*, *Clinical Pharmacology (12.2)*]. Monitor the QT interval with ECGs more frequently in patients who require treatment with concomitant medications known to prolong the QT interval.

8 USE IN SPECIFIC POPULATIONS

8.1 Pregnancy

Risk Summary

Based on animal reproduction studies and its mechanism of action, SUTENT can cause fetal harm when administered to a pregnant woman [see *Clinical Pharmacology (12.1)*]. There are no available data in pregnant women to inform a drug-associated risk. In animal developmental and reproductive toxicology studies, oral administration of

sunitinib to pregnant rats and rabbits throughout organogenesis resulted in teratogenicity (embryo lethality, craniofacial and skeletal malformations) at 5.5 and 0.3 times the combined AUC (the combined systemic exposure of sunitinib plus its active metabolite) in patients administered the recommended daily doses (RDD) of 50 mg, respectively (see *Data*). Advise females of reproductive potential of the potential risk to a fetus.

The estimated background risk of major birth defects and miscarriage for the indicated populations are unknown. All pregnancies have a background risk of birth defect, loss, or other adverse outcomes. In the U.S. general population, the estimated background risk of major birth defects and miscarriages in clinically recognized pregnancies is 2 to 4% and 15 to 20%, respectively.

Data

Animal Data

In a female fertility and early embryonic development study, female rats were administered oral sunitinib (0.5, 1.5, 5 mg/kg/day) for 21 days prior to mating and for 7 days after mating. Embryo lethality was observed at 5 mg/kg/day (approximately 5 times the combined AUC in patients administered the RDD of 50 mg).

In embryo-fetal developmental toxicity studies, oral sunitinib was administered to pregnant rats (0.3, 1.5, 3, 5 mg/kg/day) and rabbits (0.5, 1, 5, 20 mg/kg/day) during the period of organogenesis. In rats, embryo lethality and skeletal malformations of the ribs and vertebrae were observed at the dose of 5 mg/kg/day (approximately 5.5 times the combined AUC in patients administered the RDD of 50 mg). No adverse fetal effects were observed in rats at doses ≤ 3 mg/kg/day (approximately 2 times the combined AUC in patients administered the RDD of 50 mg). In rabbits, embryo lethality was observed at 5 mg/kg/day (approximately 3 times the combined AUC in patients administered the RDD of 50 mg), and craniofacial malformations (cleft lip and cleft palate) were observed at ≥ 1 mg/kg/day (approximately 0.3 times the combined AUC in patients administered the RDD of 50 mg).

Sunitinib (0.3, 1, 3 mg/kg/day) was evaluated in a pre- and postnatal development study in pregnant rats. Maternal body weight gains were reduced during gestation and lactation at doses ≥ 1 mg/kg/day (approximately 0.5 times the combined AUC in patients administered the RDD of 50 mg). At 3 mg/kg/day (approximately 2 times the combined AUC in patients administered the RDD of 50 mg), reduced neonate body weights were observed at birth and persisted in the offspring of both sexes during the preweaning period and in males during postweaning period. No adverse developmental effects were observed at doses ≤ 1 mg/kg/day.

8.2 Lactation

There is no information regarding the presence of sunitinib and its metabolites in human milk. Sunitinib and its metabolites were excreted in rat milk at concentrations up to 12-fold higher than in plasma (see *Data*). Because of the potential for serious adverse reactions in breastfed infants, advise women not to breastfeed during treatment with SUTENT and for at least 4 weeks after the last dose.

Data

Animal Data

In lactating female rats administered 15 mg/kg, sunitinib and its metabolites were excreted in milk at concentrations up to 12-fold higher than in plasma.

8.3 Females and Males of Reproductive Potential

SUTENT can cause fetal harm when administered to a pregnant woman [see *Use in Specific Populations (8.1)*].

Pregnancy Testing

Verify pregnancy status of females of reproductive potential prior to initiating treatment with SUTENT.

Contraception

Females

Advise females of reproductive potential to use effective contraception during treatment with SUTENT and for at least 4 weeks after the last dose.

Males

Based on findings in animal reproduction studies, advise males with female partners of reproductive potential to use effective contraception during treatment with SUTENT and for 7 weeks after the last dose.

Infertility

Based on findings in animals, SUTENT may impair male and female fertility [see *Nonclinical Toxicology (13.1)*].

8.4 Pediatric Use

The safety and effectiveness of SUTENT in pediatric patients have not been established. Safety and pharmacokinetics of sunitinib were assessed in an open-label study (NCT00387920) in pediatric patients 2 years to <17 years of age (n=29) with refractory solid tumors. In addition, efficacy, safety and pharmacokinetics of sunitinib was assessed in another open-label study (NCT01462695) in pediatric patients 2 years to <17 years of age (n=27) with high-grade glioma or ependymoma. The maximum tolerated dose (MTD) normalized for body surface area (BSA) was lower in pediatric patients compared to adults. Sunitinib was poorly tolerated in pediatric patients. The occurrence of dose-limiting cardiotoxicity prompted an amendment of the NCT00387920 study to exclude patients with previous exposure to anthracyclines or cardiac radiation. No responses were reported in patients in either of the trials.

Apparent clearance and volume of distribution normalized for BSA for sunitinib and its active major metabolite were lower in pediatrics as compared to adults.

The effect on open tibial growth plates in pediatric patients who received SUTENT has not been adequately studied. See Juvenile Animal Toxicity Data below.

Juvenile Animal Toxicity Data

Physeal dysplasia was present in cynomolgus monkeys with open growth plates treated with sunitinib for ≥ 3 months (3 month dosing 2, 6, 12 mg/kg/day; 8 cycles of dosing 0.3, 1.5, 6.0 mg/kg/day) at doses that were >0.4 times the combined AUC (the combined systemic exposure of sunitinib plus its active metabolite) in patients

administered the RDD of 50 mg. The no-effect level (NOEL) was 1.5 mg/kg/day in monkeys treated intermittently for 8 cycles, but was not identified in monkeys treated continuously for 3 months. In developing rats treated continuously for 3 months (1.5, 5.0, and 15.0 mg/kg) or 5 cycles (0.3, 1.5, and 6.0 mg/kg/day), bone abnormalities consisted of thickening of the epiphyseal cartilage of the femur and an increase of fracture of the tibia at doses ≥ 5 mg/kg (approximately 10 times the combined AUC in patients administered the RDD of 50 mg). Additionally, tooth caries were present in rats at >5 mg/kg. The incidence and severity of physeal dysplasia were dose related and reversible upon cessation of treatment; however, findings in the teeth were not. In rats, the NOEL in bones was ≤ 2 mg/kg/day.

8.5 Geriatric Use

Of the 7527 patients with GIST, RCC (advanced and adjuvant), or pNET who received SUTENT, 32% were 65 years and older, and 7% were 75 years and older. Patients aged 65 years of age and older had a higher incidence of Grade 3 or 4 adverse reactions (67%) than younger patients (60%).

In the GIST study, 73 (30%) of the patients who received SUTENT were 65 years and older. In the mRCC study, 152 (41%) of patients who received SUTENT were 65 years and older. No overall differences in safety or effectiveness were observed between these patients and younger patients.

In the pNET study, 22 (27%) of the patients who received SUTENT were 65 years and older. Clinical studies of SUTENT did not include sufficient numbers of patients with pNET to determine if patients 65 years of age and older respond differently than younger patients.

8.6 Hepatic Impairment

No dose adjustment is required in patients with mild or moderate (Child-Pugh Class A or B) hepatic impairment [see *Clinical Pharmacology* (12.3)]. SUTENT was not studied in patients with severe (Child-Pugh Class C) hepatic impairment.

8.7 Renal Impairment

No dose adjustment is recommended in patients with mild (CLcr 50 to 80 mL/min), moderate (CLcr 30 to <50 mL/min), or severe (CLcr <30 mL/min) renal impairment who are not on dialysis [see *Clinical Pharmacology* (12.3)].

No dose adjustment is recommended for patients with end-stage renal disease (ESRD) on hemodialysis [see *Clinical Pharmacology* (12.3)].

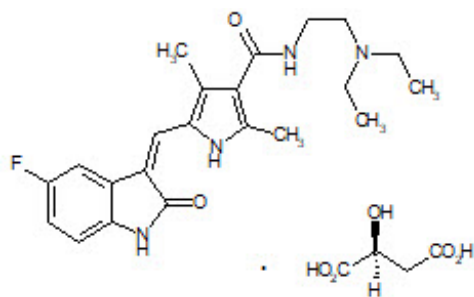
10 OVERDOSAGE

Treatment of overdose with SUTENT should consist of general supportive measures. There is no specific antidote for overdose with SUTENT. If indicated, elimination of unabsorbed drug should be achieved by emesis or gastric lavage. Cases of accidental overdose have been reported; these cases were associated with adverse reactions consistent with the known safety profile of SUTENT, or without adverse reactions. In nonclinical studies, mortality was observed following as few as 5 daily doses of 500 mg/kg (3000 mg/m²) in rats. At this dose, signs of toxicity included impaired muscle

coordination, head shakes, hypoactivity, ocular discharge, piloerection, and gastrointestinal distress. Mortality and similar signs of toxicity were observed at lower doses when administered for longer durations.

11 DESCRIPTION

Sunitinib is a kinase inhibitor present in SUTENT capsules as the malate salt. Sunitinib malate is described chemically as (2*S*)-2-hydroxybutanedioic acid with *N*-[2-(diethylamino)ethyl]-5-[(*Z*)-(5-fluoro-1,2-dihydro-2-oxo-3*H*-indol-3-ylidene)methyl]-2,4-dimethyl-1*H*-pyrrole-3-carboxamide (1:1). The molecular formula is $C_{22}H_{27}FN_4O_2 \cdot C_4H_6O_5$ and the molecular weight is 532.6 Daltons. The chemical structure of sunitinib malate is:



Sunitinib malate is a yellow to orange powder with a pKa of 8.95. The solubility of sunitinib malate in aqueous media over the range pH 1.2 to pH 6.8 is in excess of 25 mg/mL. The log of the distribution coefficient (octanol/water) at pH 7 is 5.2.

SUTENT (sunitinib malate) capsules are supplied as printed hard shell capsules containing 12.5 mg, 25 mg, 37.5 mg or 50 mg of sunitinib (equivalent to 16.7 mg, 33.4 mg, 50.1 mg, or 66.8 mg of sunitinib malate, respectively). The capsules contain the following inactive ingredients: croscarmellose sodium, magnesium stearate, mannitol, and povidone (K-25). The orange gelatin capsule shells contain titanium dioxide and red iron oxide; the caramel gelatin capsule shells contain titanium dioxide, red iron oxide, yellow iron oxide, and black iron oxide; and the yellow gelatin capsule shells contain titanium dioxide and yellow iron oxide. The white printing ink contains shellac, propylene glycol, sodium hydroxide, povidone, and titanium dioxide and the black printing ink contains shellac, propylene glycol, potassium hydroxide, and black iron oxide.

12 CLINICAL PHARMACOLOGY

12.1 Mechanism of Action

Sunitinib is a small molecule that inhibits multiple receptor tyrosine kinases (RTKs), some of which are implicated in tumor growth, pathologic angiogenesis, and metastatic progression of cancer. Sunitinib was evaluated for its inhibitory activity against a variety of kinases (>80 kinases) and was identified as an inhibitor of platelet-derived growth factor receptors (PDGFR α and PDGFR β), vascular endothelial growth factor receptors (VEGFR1, VEGFR2, and VEGFR3), stem cell factor receptor (KIT), Fms-like tyrosine kinase-3 (FLT3), colony stimulating factor receptor Type 1 (CSF-1R), and the glial cell-line

derived neurotrophic factor receptor (RET). Sunitinib inhibition of the activity of these RTKs has been demonstrated in biochemical and cellular assays, and inhibition of function has been demonstrated in cell proliferation assays. The primary metabolite exhibits similar potency compared to sunitinib in biochemical and cellular assays.

Sunitinib inhibited the phosphorylation of multiple RTKs (PDGFR β , VEGFR2, KIT) in tumor xenografts expressing RTK targets in vivo and demonstrated inhibition of tumor growth or tumor regression and/or inhibited metastases in some experimental models of cancer. Sunitinib demonstrated the ability to inhibit growth of tumor cells expressing dysregulated target RTKs (PDGFR, RET, or KIT) in vitro and to inhibit PDGFR β - and VEGFR2-dependent tumor angiogenesis in vivo.

12.2 Pharmacodynamics

Exposure-Response Relationship

Based on population pharmacokinetic/pharmacodynamic analyses, there were relationships between changes in different pharmacodynamic endpoints (i.e., safety and efficacy endpoints) over time and sunitinib plasma exposures.

Cardiac Electrophysiology

SUTENT can cause QT interval prolongation in a dose-dependent manner, which may lead to an increased risk for ventricular arrhythmias including Torsade de Pointes [see *Warnings and Precautions (5.3)*].

12.3 Pharmacokinetics

The pharmacokinetics of sunitinib and sunitinib malate have been evaluated in healthy subjects and in patients with solid tumors.

Sunitinib AUC and C_{max} increase proportionately over a dose range of 25 mg to 100 mg (0.5 to 2 times the approved RDD of 50 mg). The pharmacokinetics were similar in healthy subjects and in patients with a solid tumor, including patients with GIST and RCC. No significant changes in the pharmacokinetics of sunitinib or the primary active metabolite were observed with repeated daily administration or with repeated cycles. With repeated daily administration, sunitinib accumulates 3- to 4-fold while the primary metabolite accumulates 7- to 10-fold. Steady-state concentrations of sunitinib and its primary active metabolite are achieved within 10 to 14 days. By Day 14, combined plasma concentrations of sunitinib and its active metabolite ranged from 63 to 101 ng/mL.

Absorption

Following oral administration of sunitinib, the time to maximum plasma concentration (T_{max}) ranged from 6 to 12 hours.

Effect of Food

The administration of a single dose of SUTENT 50 mg with a high-fat, high-calorie meal (consisting of approximately 150 protein calories and 500 to 600 fat calories) in healthy subjects had no clinically significant effect on SUTENT or active metabolites exposure.

Distribution

The apparent volume of distribution (Vd/F) for sunitinib is 2230 L. Binding of sunitinib

and its primary active metabolite to human plasma protein in vitro is 95% and 90%, respectively, with no concentration dependence in the range of 100 to 4000 ng/mL.

Elimination

Following administration of a single oral dose in healthy subjects, the terminal half-lives of sunitinib and its primary active metabolite are approximately 40 to 60 hours and 80 to 110 hours, respectively. Sunitinib total oral clearance (CL/F) ranged from 34 to 62 L/h with an interpatient variability of 40%.

Metabolism

Sunitinib is metabolized primarily by CYP3A4 to its primary active metabolite, which is further metabolized by CYP3A4. The primary active metabolite comprises 23% to 37% of the total exposure. After a radiolabeled dose, sunitinib and its active metabolite were the major compounds identified in plasma, accounting for 92% of radioactivity.

Excretion

After a radiolabeled dose of sunitinib, approximately 61% of the dose was recovered in feces and 16% in urine.

Sunitinib and its primary active metabolite were the major compounds identified in urine and feces, representing 86% and 74% of radioactivity, respectively.

Specific Populations

No clinically significant differences in the pharmacokinetics of sunitinib or the primary active metabolite were observed based on age (18 to 84 years), body weight (34 to 168 kg), race (White, Black, or Asian), sex, Eastern Cooperative Oncology Group (ECOG) score, mild (Child-Pugh Class A) or moderate (Child-Pugh Class B) hepatic impairment.

Patients with Renal Impairment

No clinically significant differences in the pharmacokinetics of sunitinib or its active metabolite were predicted or observed in patients with mild (CLcr 50 to 80 mL/min), moderate (CLcr 30 to <50 mL/min), or severe (CLcr <30 mL/min) renal impairment who are not on dialysis, compared to patients with normal renal function (CLcr >80 mL/min). Although sunitinib was not eliminated through hemodialysis, the sunitinib systemic exposure was 47% lower in patients with end stage renal disease (ESRD) on hemodialysis compared to patients with normal renal function.

Drug Interaction Studies

Clinical Studies

Effect of strong CYP3A4 inhibitors on sunitinib: Co-administration of a single SUTENT dose with ketoconazole (strong CYP3A4 inhibitor) increased the combined sunitinib and its active metabolite C_{max} and AUC_{0-inf} by 49% and 51%, respectively, in healthy subjects.

Effect of strong CYP3A4 inducers on sunitinib: Co-administration of a single SUTENT dose with rifampin (strong CYP3A4 inducer) reduced the combined sunitinib and its active metabolite C_{max} and AUC_{0-inf} by 23% and 46%, respectively in healthy subjects.

In Vitro Studies

In vitro studies in human hepatocytes and microsomes indicated that sunitinib and the

primary active metabolite do not induce CYP1A2, CYP2E1, and CYP3A4/5, or inhibit CYP1A2, CYP2A6, CYP2B6, CYP2C8, CYP2C9, CYP2C19, CYP2D6, CYP2E1, CYP3A4/5, and CYP4A9/11 at clinically relevant concentrations.

13 NONCLINICAL TOXICOLOGY

13.1 Carcinogenesis, Mutagenesis, Impairment of Fertility

The carcinogenic potential of sunitinib has been evaluated in 2 species: rasH2 transgenic mice and Sprague-Dawley rats. There were similar positive findings in both species. In rasH2 transgenic mice, gastroduodenal carcinomas and/or gastric mucosal hyperplasia, as well as an increased incidence of background hemangiosarcomas were observed at sunitinib daily doses of ≥ 25 mg/kg/day in studies of 1 or 6 months duration. No proliferative changes were observed in rasH2 transgenic mice at 8 mg/kg/day. Similarly, in a 2-year rat carcinogenicity study, administration of sunitinib in 28-day cycles followed by 7-day dose-free periods resulted in findings of duodenal carcinoma at doses as low as 1 mg/kg/day [approximately 0.9 times the combined AUC (combined systemic exposure of sunitinib plus its active metabolite) in patients administered the RDD of 50 mg]. At the high dose of 3 mg/kg/day (approximately 8 times the combined AUC in patients administered the RDD of 50 mg), the incidence of duodenal tumors was increased and was accompanied by findings of gastric mucous cell hyperplasia and by an increased incidence of pheochromocytoma and hyperplasia of the adrenal gland.

Sunitinib did not cause genetic damage when tested in in vitro assays [bacterial mutation (Ames test), human lymphocyte chromosome aberration] and an in vivo rat bone marrow micronucleus test.

In a female fertility and early embryonic development study, female rats were administered oral sunitinib (0.5, 1.5, 5 mg/kg/day) for 21 days prior to mating and for 7 days after mating. Preimplantation loss was observed in females administered 5 mg/kg/day (approximately 5 times the combined AUC in patients administered the RDD of 50 mg). No adverse effects on fertility were observed at doses ≤ 1.5 mg/kg/day (approximately equal to the combined AUC in patients administered the RDD of 50 mg). In addition, effects on the female reproductive system were identified in a 3-month oral repeat-dose monkey study (2, 6, 12 mg/kg/day). Ovarian changes (decreased follicular development) were noted at 12 mg/kg/day (approximately 5 times the combined AUC in patients administered the RDD of 50 mg), while uterine changes (endometrial atrophy) were noted at ≥ 2 mg/kg/day (approximately 0.4 times the combined AUC in patients administered the RDD of 50 mg). With the addition of vaginal atrophy, the uterine and ovarian effects were reproduced at 6 mg/kg/day (approximately 0.8 times the combined AUC in patients administered the RDD of 50 mg) in a 9-month monkey study (0.3, 1.5, and 6 mg/kg/day administered daily for 28 days followed by a 14-day respite).

In a male fertility study, no reproductive effects were observed in male rats dosed with 1, 3, or 10 mg/kg/day oral sunitinib for 58 days prior to mating with untreated females. Fertility, copulation, conception indices, and sperm evaluation (morphology, concentration, and motility) were unaffected by sunitinib at doses ≤ 10 mg/kg/day (approximately ≥ 26 times the combined AUC in patients administered the RDD of 50 mg).

14 CLINICAL STUDIES

14.1 Gastrointestinal Stromal Tumor

Study 1

Study 1 (NCT#00075218) was a 2-arm, international, randomized, double-blind, placebo-controlled trial of SUTENT in patients with GIST who had disease progression during prior imatinib mesylate (imatinib) treatment or who were intolerant of imatinib. The objective was to compare time-to-tumor progression (TTP) in patients receiving SUTENT plus best supportive care versus patients receiving placebo plus best supportive care. Other objectives included progression-free survival (PFS), objective response rate (ORR), and overall survival (OS). Patients were randomized (2:1) to receive either 50 mg SUTENT or placebo orally, once daily, on Schedule 4/2 until disease progression or withdrawal from the study for another reason. Treatment was unblinded at the time of disease progression. Patients randomized to placebo were then offered crossover to open-label SUTENT and patients randomized to SUTENT were permitted to continue treatment per investigator judgment.

At the time of a prespecified interim analysis, the intent-to-treat (ITT) population included 312 patients. Two hundred seven (207) patients were randomized to the SUTENT arm and 105 patients were randomized to the placebo arm. Demographics were comparable between the SUTENT and placebo groups with regard to age (69% versus 72% <65 years for SUTENT versus placebo, respectively), sex (male: 64% versus 61%), race (White: 88% both arms, Asian: 5% both arms, Black: 4% both arms, remainder not reported), and performance status (ECOG 0: 44% versus 46%, ECOG 1: 55% versus 52%, and ECOG 2: 1% versus 2%). Prior treatment included surgery (94% versus 93%) and radiotherapy (8% versus 15%). Outcome of prior imatinib treatment was also comparable between arms with intolerance (4% versus 4%), progression within 6 months of starting treatment (17% versus 16%), or progression beyond 6 months (78% versus 80%) balanced.

The planned interim efficacy and safety analysis was performed after 149 TTP events had occurred. There was a statistically significant advantage for SUTENT over placebo in TTP, meeting the primary endpoint. Efficacy results are summarized in Table 10 and the Kaplan-Meier curve for TTP is shown in Figure 1.

Table 10. GIST Efficacy Results From Study 1 (Double-Blind Treatment Phase)

Efficacy Parameter	SUTENT (N=207)	Placebo (N=105)	p-value (log-rank test)	HR (95% CI)
Time-to-tumor progression* [median, weeks (95% CI)]	27.3 (16.0, 32.1)	6.4 (4.4, 10.0)	<0.0001 [†]	0.33 (0.23, 0.47)
Progression-free survival [‡] [median, weeks (95% CI)]	24.1 (11.1, 28.3)	6.0 (4.4, 9.9)	<0.0001	0.33 (0.24, 0.47)
Objective response rate (PR) [% (95% CI)]	6.8 (3.7, 11.1)	0	0.006 [§]	

Abbreviations: CI=confidence interval; GIST=gastrointestinal stromal tumor; HR=hazard ratio; N=number of patients; PR=partial response.

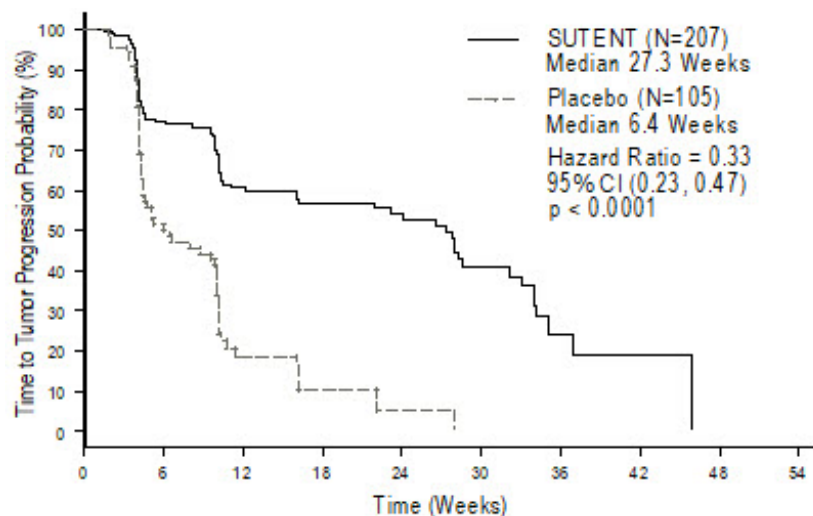
* Time from randomization to progression; deaths prior to documented progression were censored at time of last radiographic evaluation.

† A comparison is considered statistically significant if the p-value is <0.00417 (O'Brien Fleming stopping boundary).

‡ Time from randomization to progression or death due to any cause.

§ Pearson chi-square test.

Figure 1. Kaplan-Meier Curve of TTP in GIST Study 1 (Intent-to-Treat Population)



Abbreviations: CI=confidence interval; GIST=gastrointestinal stromal tumor; N=number of patients; TTP=time-to-tumor progression.

The final ITT population enrolled in the double-blind treatment phase of the study included 243 patients randomized to the SUTENT arm and 118 patients randomized to the placebo arm. After the primary endpoint was met at the interim analysis, the study was unblinded, and patients on the placebo arm were offered open-label SUTENT treatment. Ninety-nine (99) of the patients initially randomized to placebo crossed over to receive SUTENT in the open-label treatment phase. At the protocol specified final analysis of OS, the median OS was 72.7 weeks for the SUTENT arm and 64.9 weeks for the placebo arm [hazard ratio (HR)=0.876, 95% confidence interval (CI) (0.679, 1.129)].

Study 2

Study 2 was an open-label, multi-center, single-arm, dose-escalation study conducted in patients with GIST following progression on, or intolerance to imatinib. Following identification of the recommended regimen (50 mg once daily on Schedule 4/2), 55 patients in this study received the 50 mg dose of SUTENT on treatment Schedule 4/2. Partial responses (PR) were observed in 5 of 55 patients (9.1% PR rate; 95% CI: 3.0%, 20.0%).

14.2 Renal Cell Carcinoma

Treatment-Naïve

Study 3 (NCT#00083889) was a multi-center, international, randomized study comparing single-agent SUTENT with interferon alfa was conducted in patients with treatment-naïve RCC. The objective was to compare PFS in patients receiving SUTENT versus patients receiving interferon alfa. Other endpoints included ORR, OS, and safety.

Seven hundred fifty (750) patients were randomized (1:1) to receive either 50 mg SUTENT once daily on Schedule 4/2 or to receive interferon alfa administered subcutaneously at 9 million international units (MIU) 3 times a week. Patients were treated until disease progression or withdrawal from the study.

The ITT population included 750 patients, 375 randomized to SUTENT and 375 randomized to interferon alfa. Demographics were comparable between the SUTENT and interferon alfa groups with regard to age (59% versus 67% <65 years for SUTENT versus interferon alfa, respectively), sex (male: 71% versus 72%), race (White: 94% versus 91%, Asian: 2% versus 3%, Black: 1% versus 2%, remainder not reported), and performance status (ECOG 0: 62% versus 61%, ECOG 1: 38% each arm, ECOG 2: 0 versus 1%). Prior treatment included nephrectomy (91% versus 89%) and radiotherapy (14% each arm). The most common site of metastases present at screening was the lung (78% versus 80%, respectively), followed by the lymph nodes (58% versus 53%, respectively) and bone (30% each arm); the majority of the patients had multiple (2 or more) metastatic sites at baseline (80% versus 77%, respectively).

There was a statistically significant advantage for SUTENT over interferon alfa in the endpoint of PFS (see Table 11 and Figure 2). In the prespecified stratification factors of lactate dehydrogenase (LDH) (>1.5 ULN versus ≤1.5 ULN), ECOG performance status (0 versus 1), and prior nephrectomy (yes versus no), the hazard ratio favored SUTENT over interferon alfa. The ORR was higher in the SUTENT arm (see Table 11).

Table 11. Treatment-Naïve RCC Efficacy Results (Interim Analysis) from Study 3

Efficacy Parameter	SUTENT (N=375)	Interferon Alfa (N=375)	p-value (log-rank test)	HR (95% CI)
Progression-free survival* [median, weeks (95% CI)]	47.3 (42.6, 50.7)	22.0 (16.4, 24.0)	<0.000001†	0.415 (0.320, 0.539)
Objective response rate* [% (95% CI)]	27.5 (23.0, 32.3)	5.3 (3.3, 8.1)	<0.001‡	NA

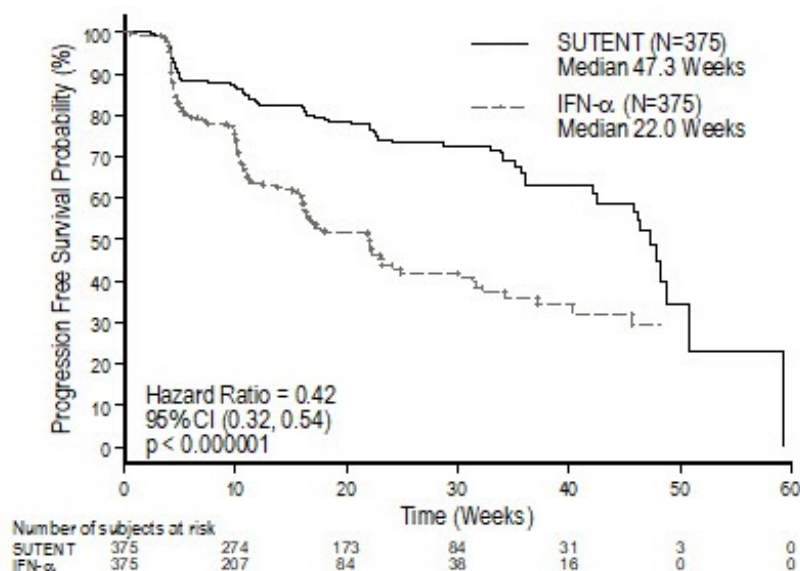
Abbreviations: CI=confidence interval; HR=hazard ratio; N=number of patients; NA=not applicable; RCC=renal cell carcinoma.

* Assessed by blinded core radiology laboratory; 90 patients' scans had not been read at time of analysis.

† A comparison is considered statistically significant if the p-value is <0.0042 (O'Brien Fleming stopping boundary).

‡ Pearson chi-square test.

Figure 2. Kaplan-Meier Curve of PFS in Treatment-Naïve RCC Study 3 (Intent-to-Treat Population)



Abbreviations: CI=confidence interval; IFN-α=interferon-alfa; N=number of patients; PFS=progression-free survival; RCC=renal cell carcinoma.

At the protocol-specified final analysis of OS, the median OS was 114.6 weeks for the SUTENT arm and 94.9 weeks for the interferon alfa arm (HR=0.821; 95% CI: 0.673, 1.001). The median OS for the interferon alfa arm includes 25 patients who discontinued interferon alfa treatment because of disease progression and crossed over to treatment with SUTENT as well as 121 patients (32%) on the interferon alfa arm who received post-study cancer treatment with SUTENT.

Cytokine-Refractory

The use of single-agent SUTENT in the treatment of cytokine-refractory RCC was investigated in 2 single-arm, multi-center studies. All patients enrolled into these studies experienced failure of prior cytokine-based therapy. In Study 4 (NCT#00077974), failure of prior cytokine therapy was based on radiographic evidence of disease progression defined by response evaluation criteria in solid tumors (RECIST) or World Health Organization (WHO) criteria during or within 9 months of completion of 1 cytokine therapy treatment (interferon alfa, interleukin-2, or interferon alfa plus interleukin-2; patients who were treated with interferon alfa alone must have received treatment for at least 28 days). In Study 5 (NCT#00054886), failure of prior cytokine therapy was defined as disease progression or unacceptable treatment-related toxicity. The endpoint for both studies was ORR. Duration of response (DR) was also evaluated.

One hundred and six patients (106) were enrolled into Study 4 and 63 patients were enrolled into Study 5. Patients received 50 mg SUTENT on Schedule 4/2. Therapy was continued until the patients met withdrawal criteria or had progressive disease. The baseline age, sex, race, and ECOG performance statuses of the patients were comparable between Studies 4 and 5. Approximately 86%–94% of patients in the 2 studies were White. Men comprised 65% of the pooled population. The median age was 57 years and ranged from 24 to 87 years in the studies. All patients had an ECOG performance status <2 at the screening visit.

The baseline malignancy and prior treatment history of the patients were comparable between Studies 4 and 5. Across the 2 studies, 95% of the pooled population of patients had at least some component of clear-cell histology. All patients in Study 4 were required

to have a histological clear-cell component. Most patients enrolled in the studies (97% of the pooled population) had undergone nephrectomy; prior nephrectomy was required for patients enrolled in Study 4. All patients had received 1 previous cytokine regimen. Metastatic disease present at the time of study entry included lung metastases in 81% of patients. Liver metastases were more common in Study 4 (27% versus 16% in Study 5) and bone metastases were more common in Study 5 (51% versus 25% in Study 4); 52% of patients in the pooled population had at least 3 metastatic sites. Patients with known brain metastases or leptomeningeal disease were excluded from both studies.

The ORR and DR data from Studies 4 and 5 are provided in Table 12. There were 36 PRs in Study 4 as assessed by a core radiology laboratory for an ORR of 34.0% (95% CI: 25.0%, 43.8%). There were 23 PRs in Study 5 as assessed by the investigators for an ORR of 36.5% (95% CI: 24.7%, 49.6%). The majority (>90%) of objective disease responses were observed during the first 4 cycles; the latest reported response was observed in Cycle 10. DR data from Study 4 is premature as only 9 of 36 patients (25%) responding to treatment had experienced disease progression or died at the time of the data cutoff.

Table 12. Cytokine-Refractory RCC Efficacy Results from Study 4 and Study 5

Efficacy Parameter	Study 4 (N=106)	Study 5 (N=63)
Objective response rate [% , (95% CI)]	34.0* (25.0, 43.8)	36.5† (24.7, 49.6)
Duration of response [median, weeks (95% CI)]	NR‡ (42.0, ‡)	54† (34.3, 70.1)

Abbreviations: CI=confidence interval; N=number of patients; NR=not reached; RCC=renal cell carcinoma.

* Assessed by blinded core radiology laboratory.

† Assessed by investigators.

‡ Data not mature enough to determine upper confidence limit.

Adjuvant Treatment

In the adjuvant treatment setting, SUTENT was investigated in S-TRAC (NCT#00375674), a multi-center, international, randomized, double-blind, placebo-controlled, trial in patients with high risk of recurrent RCC following nephrectomy. Patients were required to have clear cell histology and high risk of recurrence defined as \geq T3 and/or N+ tumors. Six hundred fifteen (615) patients were randomized 1:1 to receive either 50 mg SUTENT once daily on Schedule 4/2 or placebo. Patients were treated for 9 cycles (approximately 1 year), or until disease recurrence, unacceptable toxicity, or withdrawal of consent.

Demographics were generally comparable between the SUTENT and placebo arms with regard to age (median age 58 years), sex (73% male), and race (84% White, 12% Asian and 4% Other). At randomization, most patients had an ECOG performance status of 0 (74% SUTENT and 72% placebo). The remainder of the patients had an ECOG performance status of 1; 1 patient on SUTENT had a performance status of 2.

The major efficacy outcome measure was disease-free survival (DFS) in patients receiving SUTENT versus placebo as assessed by blinded independent central review (BICR). Overall survival was an additional endpoint. There was a statistically significant

improvement in DFS in patients who were treated with SUTENT compared to placebo (Table 13 and Figure 3). Prespecified subgroup analyses are presented in Table 14. At the time of the DFS analysis, overall survival data were not mature, with 141/615 (23%) patient deaths.

Table 13. Disease-free Survival Results as Assessed by BICR in Adjuvant RCC (Intent to Treat Population) from S-TRAC

	SUTENT N=309	Placebo N=306	p-value*	HR* (95% CI)
Median DFS [years (95% CI)]	6.8 (5.8, NR)	5.6 (3.8, 6.6)	0.03	0.76 (0.59, 0.98)
DFS Events	113 (36.6%)	144 (47.1%)		
5 Year DFS Rate	59.3%	51.3%		

Abbreviations: BICR=blinded independent central review; CI=confidence interval; DFS=disease-free survival; HR=hazard ratio; N=number of patients; RCC=renal cell carcinoma.

* P-value based on log-rank test stratified by University of California Los Angeles Integrated Staging System (UISS) prognostic group; HR based on a Cox proportional hazard model stratified by UISS prognostic group

Table 14. Disease-free Survival by Baseline Disease Characteristics

	Number of Events/ Total n/N		Median DFS [years (95% CI)]		HR* (95% CI)
	SUTENT	Placebo	SUTENT	Placebo	
T3 Intermediate [†]	35/115	46/112	NR (5.2, NR)	6.4 (4.7, NR)	0.82 (0.53, 1.28)
T3 High [‡]	63/165	79/166	6.8 (5.0, NR)	5.3 (2.9, NR)	0.77 (0.55, 1.07)
T4/Node Positive [§]	15/29	19/28	3.5 (1.2, NR)	1.7 (0.4, 3.0)	0.62 (0.31, 1.23)

Abbreviations: CI=confidence interval; DFS=disease-free survival; HR=hazard ratio; N=number of patients; n=number of events; NR=not reached

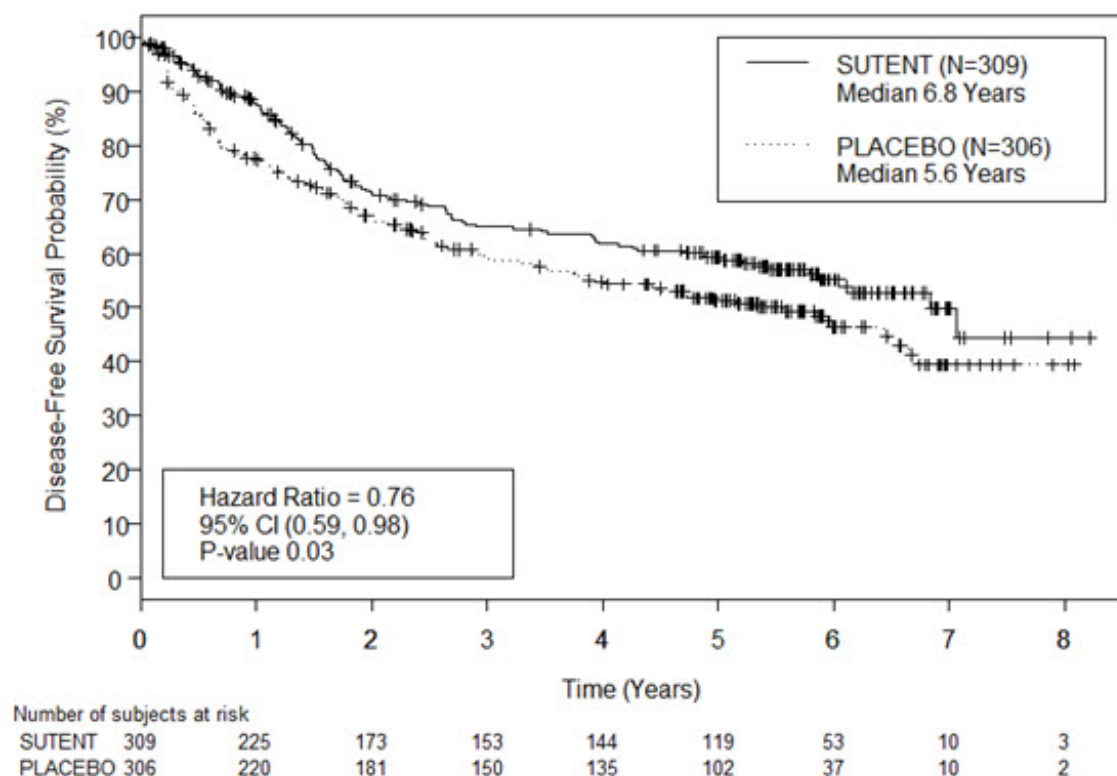
* HR based on a Cox proportional hazards model

† T3 Intermediate: T3, N0 or NX, M0, any Fuhrman's grade, ECOG PS 0 OR T3, N0 or NX, M0, Fuhrman's grade 1, ECOG PS ≥ 1

‡ T3 High: T3, N0 or NX, M0, Fuhrman's grade ≥ 2, ECOG PS ≥ 1

§ T4/Node Positive: T4, N0 or NX, M0, any Fuhrman's grade, any ECOG PS OR Any T, N1-2, M0, any Fuhrman's grade, any ECOG PS

Figure 3. Kaplan-Meier Curve of Disease-free Survival as Assessed by BICR (Intent-to-Treat Population)



Abbreviations: BICR=blinded independent central review; CI=confidence interval; N=number of patients.

14.3 Pancreatic Neuroendocrine Tumors

Study 6 (NCT#00428597) was a multi-center, international, randomized, double-blind, placebo-controlled study of single-agent SUTENT conducted in patients with unresectable pNET. Patients were required to have documented RECIST-defined disease progression within the prior 12 months and were randomized (1:1) to receive either 37.5 mg SUTENT (N=86) or placebo (N=85) once daily without a scheduled off-treatment period. The primary objective was to compare PFS in patients receiving SUTENT versus patients receiving placebo. Other endpoints included OS, ORR, and safety. Use of somatostatin analogs was allowed in the study.

Demographics were comparable between the SUTENT and placebo groups. Additionally, 49% of SUTENT patients had nonfunctioning tumors vs 52% of placebo patients, and 92% patients in both arms had liver metastases. A total of 66% of SUTENT patients received prior systemic therapy compared with 72% of placebo patients and 35% of SUTENT patients had received somatostatin analogs compared with 38% of placebo patients. Patients were treated until disease progression or withdrawal from the study. Upon disease progression or study closure, patients were offered access to SUTENT in a separate extension study.

As recommended by the Independent Data Monitoring Committee, the study was terminated prematurely prior to the prespecified interim analysis. This may have led to an overestimate of the magnitude of PFS effect. A clinically significant improvement for SUTENT over placebo in PFS was seen by both investigator and independent assessment. A hazard ratio favoring SUTENT was observed in all subgroups of baseline characteristics evaluated. OS data were not mature at the time of the analysis. There

were 9 deaths in the SUTENT arm and 21 deaths in the placebo arm. A statistically significant difference in ORR favoring SUTENT over placebo was observed. Efficacy results are summarized in Table 15 and the Kaplan-Meier curve for PFS is in Figure 4.

Table 15. pNET Efficacy Results from Study 6

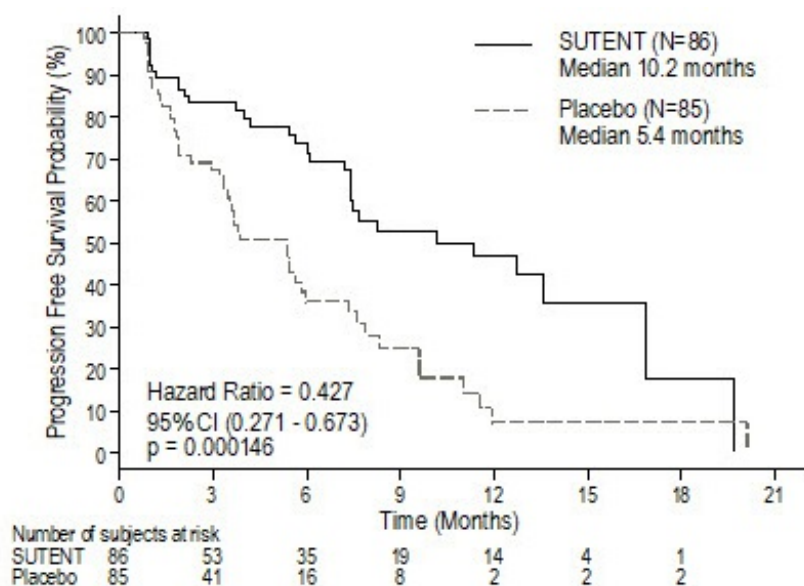
Efficacy Parameter	SUTENT (N=86)	Placebo (N=85)	p-value	HR (95% CI)
Progression-free survival [median, months (95% CI)]	10.2 (7.4, 16.9)	5.4 (3.4, 6.0)	0.000146*	0.427 (0.271, 0.673)
Objective response rate [% (95% CI)]	9.3 (3.2, 15.4)	0	0.0066†	NA

Abbreviations: CI=confidence interval; HR=hazard ratio; N=number of patients; NA=not applicable; pNET=pancreatic neuroendocrine tumors.

* 2-sided unstratified log-rank test.

† Fisher's Exact test.

Figure 4. Kaplan-Meier Curve of PFS in the pNET Study 6



Abbreviations: CI=confidence interval; N=number of patients; PFS=progression-free survival; pNET=pancreatic neuroendocrine tumors.

16 HOW SUPPLIED/STORAGE AND HANDLING

SUTENT 12.5 mg capsules are supplied as hard gelatin capsule with orange cap and orange body, printed with white ink "Pfizer" on the cap, "STN 12.5 mg" on the body:

Bottles of 28 capsules: NDC 0069-0550-38

SUTENT 25 mg capsules are supplied as hard gelatin capsule with caramel cap and orange body, printed with white ink "Pfizer" on the cap, "STN 25 mg" on the body:

Bottles of 28 capsules: NDC 0069-0770-38

SUTENT 37.5 mg capsules are supplied as hard gelatin capsule with yellow cap and yellow body, printed with black ink “Pfizer” on the cap, “STN 37.5 mg” on the body:

Bottles of 28 capsules: NDC 0069-0830-38

SUTENT 50 mg capsules are supplied as hard gelatin capsule with caramel cap and caramel body, printed with white ink “Pfizer” on the cap, “STN 50 mg” on the body:

Bottles of 28 capsules: NDC 0069-0980-38

Store at 20°C to 25°C (68°F to 77°F); excursions permitted to 15°C to 30°C (59°F to 86°F) [see USP Controlled Room Temperature].

17 PATIENT COUNSELING INFORMATION

Advise the patient to read the FDA-approved patient labeling (Medication Guide).

Hepatotoxicity

Inform patients of the signs and symptoms of hepatotoxicity. Advise patients to contact their healthcare provider immediately for signs or symptoms of hepatotoxicity [see *Warnings and Precautions (5.1)*].

Cardiovascular Events

Advise patients to contact their healthcare provider if they develop symptoms of heart failure [see *Warnings and Precautions (5.2)*].

QT Prolongation and Torsade de Pointes

Inform patients of the signs and symptoms of QT prolongation. Advise patients to contact their healthcare provider immediately in the event of syncope, pre-syncope symptoms, and cardiac palpitations [see *Warnings and Precautions (5.3)*].

Hypertension

Inform patients of the signs and symptoms of hypertension. Advise patients to undergo routine blood pressure monitoring and to contact their health care provider if blood pressure is elevated or if they experience signs or symptoms of hypertension [see *Warnings and Precautions (5.4)*].

Hemorrhagic Events

Advise patients that SUTENT can cause severe bleeding. Advise patients to immediately contact their healthcare provider for bleeding or symptoms of bleeding [see *Warnings and Precautions (5.5)*].

Gastrointestinal Disorders

Advise patients that gastrointestinal disorders such as diarrhea, nausea, vomiting, and constipation may develop during SUTENT treatment and to seek immediate medical attention if they experience persistent or severe abdominal pain because cases of gastrointestinal perforation and fistula have been reported in patients taking SUTENT [see *Warnings and Precautions (5.5)*, *Adverse Reactions (6.1)*].

Dermatologic Effects and Toxicities

Advise patients that depigmentation of the hair or skin may occur during treatment with SUTENT due to the drug color (yellow). Other possible dermatologic effects may include

dryness, thickness or cracking of skin, blister or rash on the palms of the hands and soles of the feet. Severe dermatologic toxicities including Stevens-Johnson syndrome, Toxic Epidermal Necrolysis, erythema multiforme, and necrotizing fasciitis have been reported. Advise patients to immediately inform their healthcare provider if severe dermatologic reactions occur [see *Warnings and Precautions* (5.9), *Adverse Reactions* (6.1)].

Reversible Posterior Leukoencephalopathy Syndrome

Inform patients of the signs and symptoms of reversible posterior leukoencephalopathy syndrome. Advise patients to contact their healthcare provider if they develop symptoms of reversible posterior leukoencephalopathy syndrome [see *Warnings and Precautions* (5.10)].

Thyroid Dysfunction

Advise patients that SUTENT can cause thyroid dysfunction. Advise patient to contact their healthcare provider if symptoms of abnormal thyroid function occur [see *Warnings and Precautions* (5.11)].

Hypoglycemia

Advise patients that SUTENT can cause severe hypoglycemia and may be more severe in patients with diabetes taking antidiabetic medications. Inform patients of the signs, symptoms, and risks associated with hypoglycemia. Advise patients to immediately inform their healthcare provider if severe signs or symptoms of hypoglycemia occur [see *Warnings and Precautions* (5.12)].

Osteonecrosis of the Jaw

Advise patients regarding good oral hygiene practices and to inform their healthcare provider of any planned dental procedures. Advise patients to immediately contact their healthcare provider for signs or symptoms associated with osteonecrosis of the jaw [see *Warnings and Precautions* (5.13)].

Impaired Wound Healing

Advise patients that SUTENT impairs wound healing. Advise patients to inform their healthcare provider of any planned surgical procedures [see *Warnings and Precautions* (5.14)].

Concomitant Medications

Advise patients to inform their healthcare providers of all concomitant medications, including over-the-counter medications and dietary supplements [see *Drug Interactions* (7)].

Embryo-Fetal Toxicity

Advise pregnant women of the potential risk to a fetus. Advise females of reproductive potential to inform their healthcare provider of a known or suspected pregnancy [see *Warnings and Precautions* (5.15), *Use in Specific Populations* (8.1)].

Advise females of reproductive potential to use effective contraception during treatment and for 4 weeks after receiving the last dose of SUTENT [see *Use in Specific Populations* (8.3)].

Advise males with female partners of reproductive potential to use effective

contraception during treatment and for 7 weeks after receiving the last dose of SUTENT [see Use in Specific Populations (8.3)].

Lactation

Advise women not to breastfeed during treatment with SUTENT and for at least 4 weeks after the last dose [see Use in Specific Populations (8.2)].

Infertility

Advise patients that SUTENT may impair male and female fertility [see Use in Specific Populations (8.3), Nonclinical Toxicology (13.1)].

Missed Dose

Advise patients that miss a dose of SUTENT by less than 12 hours to take the missed dose right away. Advise patients that miss a dose of SUTENT by more than 12 hours to take the next scheduled dose at its regular time.

This product's labeling may have been updated. For the most recent prescribing information, please visit <http://www.pfizer.com>.



Distributed by
Pfizer Labs
Division of Pfizer Inc.
New York, NY 10001

LAB-0317-29.0

<p>MEDICATION GUIDE SUTENT® (su TENT) (sunitinib malate) capsules</p>
<p>What is the most important information I should know about SUTENT? SUTENT can cause serious side effects including:</p> <ul style="list-style-type: none">• Severe liver problems, that can lead to death. Tell your healthcare provider right away if you develop any of the following signs and symptoms of liver problems during treatment with SUTENT:<ul style="list-style-type: none">o itchingo yellow eyes or skino dark urineo pain or discomfort in the right upper stomach area <p>Your healthcare provider should do blood tests to check your liver function before you start taking and during treatment with SUTENT. Your healthcare provider may temporarily stop, reduce your dose, or permanently stop treatment with SUTENT if you</p>

develop liver problems.

See “What are the possible side effects of SUTENT?” for more information about side effects.

What is SUTENT?

SUTENT is a prescription medicine used to treat:

- a rare cancer of the stomach, bowel, or esophagus called gastrointestinal stromal tumor (GIST) and when:
 - o you have taken the medicine imatinib mesylate and it did not stop the cancer from growing, or
 - o you cannot take imatinib mesylate.
- advanced kidney cancer (advanced renal cell carcinoma or RCC).
- adults with kidney cancer that has not spread (localized), and who are at high risk of RCC coming back again after having kidney surgery.
- a type of pancreatic cancer called pancreatic neuroendocrine tumors (pNET), that has progressed and cannot be treated with surgery.

It is not known if SUTENT is safe and effective in children.

Before taking SUTENT tell your healthcare provider about all of your medical conditions, including if you:

- have any heart problems
 - have high blood pressure
 - have thyroid problems
 - have a history of low blood sugar or diabetes
 - have kidney function problems (other than cancer)
 - have liver problems
 - have any bleeding problem
 - plan to have surgery or have had a recent surgery. You should stop taking SUTENT at least 3 weeks before planned surgery. See "**What are the possible side effects of SUTENT?**"
 - have seizures
 - have or have had pain in the mouth, teeth or jaw, swelling or sores inside the mouth, numbness or a feeling of heaviness in the jaw, or loosening of a tooth
 - are pregnant or plan to become pregnant. SUTENT can harm your unborn baby.
- Females** who are able to become pregnant:

- o Your healthcare provider should do a pregnancy test before you start treatment with SUTENT.
- o You should use effective birth control (contraception) during treatment and for at least 4 weeks after your last dose of SUTENT.
- o Tell your healthcare provider right away if you become pregnant or think you are pregnant during treatment with SUTENT.

Males with female partners who are able to become pregnant should use effective birth control (contraception) during treatment and for 7 weeks after your last dose of SUTENT.

SUTENT may cause fertility problems in males and females. Tell your healthcare provider if this is a concern for you.

- are breastfeeding or plan to breastfeed. Do not breastfeed during treatment with SUTENT and for at least 4 weeks (1 month) after the last dose.

Tell all of your healthcare providers and dentists that you are taking SUTENT. They should talk to the healthcare provider who prescribed SUTENT for you, before you have **any** surgery, or medical or dental procedure.

Tell your healthcare provider about all the medicines you take, including prescription medicines and over-the-counter medicines, vitamins, and herbal supplements. Using SUTENT with certain other medicines can cause serious side effects.

You may have an increased risk of severe jawbone problems (osteonecrosis) if you take SUTENT and a bisphosphonate medicine. **Especially tell** your healthcare provider if you are taking or have taken an osteoporosis medicine.

Know the medicines you take. Keep a list of them to show your healthcare provider and pharmacist when you get a new medicine.

How should I take SUTENT?

- Take SUTENT exactly the way your healthcare provider tells you.
- Take SUTENT 1 time each day with or without food.
- If you take SUTENT for GIST or RCC, you will usually take your medicine for 4 weeks (28 days) and then stop for 2 weeks (14 days). This is 1 cycle of treatment. You will repeat this cycle for as long as your healthcare provider tells you to.
- If you take SUTENT for pNET, take it 1 time each day until your healthcare provider tells you to stop.
- Do not drink grapefruit juice or eat grapefruit during your treatment with SUTENT. They may cause you to have too much SUTENT in your body.
- Your healthcare provider may do blood tests before each cycle of treatment to check you for side effects.
- If you miss a dose of SUTENT by less than 12 hours, take the missed dose right away. If you miss a dose of SUTENT by more than 12 hours, just take your next dose at your regular time. Do not make up the missed dose. Tell your healthcare provider about any missed dose.
- Call your healthcare provider right away, if you take too much SUTENT.

What are possible side effects of SUTENT?

SUTENT may cause serious side effects, including:

- See **“What is the most important information I should know about SUTENT?”**
- **Heart problems.** Heart problems may include heart failure, heart attack and heart muscle problems (cardiomyopathy) that can lead to death. Tell your healthcare provider if you feel very tired, are short of breath, or have swollen feet and ankles.
- **Abnormal heart rhythm changes. Changes in the electrical activity of your heart called QT prolongation can cause irregular heart beats that can be life threatening.** Your healthcare provider may do electrocardiograms and blood tests (electrolytes) to watch for these problems during your treatment with SUTENT. Tell your healthcare provider right away if you feel dizzy, faint, or have abnormal heartbeats during your treatment with SUTENT

o you feel faint or lightheaded, or you o feel your heart beat is irregular or

pass out
o dizziness

fast

- **High blood pressure.** High blood pressure is common with SUTENT and may sometimes be severe. Follow your healthcare provider's instructions about having your blood pressure checked regularly. Call your healthcare provider if your blood pressure is high, or if you have any of the following signs or symptoms of high blood pressure:

o severe headache
o lightheadedness

o dizziness
o change in vision

Your healthcare provider may prescribe medicine for you to treat high blood pressure, if needed.

- **Bleeding problems.** Bleeding is common with SUTENT, but SUTENT can also cause severe bleeding problems that can lead to death. Your healthcare provider will monitor you for bleeding and may do blood tests if needed. Call your healthcare provider right away if you have any of these symptoms or a serious bleeding problem during treatment with SUTENT, including:

o painful, swollen stomach (abdomen)
o vomiting blood
o coughing up blood
o black, sticky stools

o bloody urine
o headache
o change in your mental status

- **Serious stomach and intestinal problems, that can sometimes lead to death.** Some people have had tears in their stomach or intestine (perforation), or have developed an abnormal opening between the stomach and intestine (fistula). Get medical help right away if you get stomach-area (abdominal) pain that does not go away or is severe during treatment with SUTENT.
- **Tumor lysis syndrome (TLS).** TLS is caused by the fast breakdown of cancer cells and may lead to death. TLS can cause kidney failure and the need for dialysis treatment, abnormal heart rhythm, seizure, and sometimes death. Your healthcare provider may do blood tests to check you for TLS.
- **Abnormal changes in the brain (Reversible Posterior Leukoencephalopathy Syndrome [RPLS]).** RPLS can cause a collection of symptoms including headache, confusion, and vision loss. Some people who have taken SUTENT have developed RPLS that can lead to death.
- **Thrombotic microangiopathy (TMA) including thrombotic thrombocytopenia purpura (TTP) and hemolytic uremic syndrome (HUS).** TMA is a condition that involves injury to the smallest blood vessels, and blood clots that can happen while taking SUTENT. TMA is accompanied by a decrease in red cells and cells that are involved with clotting. TMA may harm your body's organs such as the brain and kidneys, and can sometimes lead to death.
- **Protein in your urine.** Some people who have taken SUTENT have developed protein in their urine, and in some cases, kidney problems that can lead to death.

Your healthcare provider will check you for this problem.

- **Serious skin and mouth reactions.** Treatment with SUTENT has caused severe skin reactions that can lead to death, including:
 - o severe rash with blisters or peeling of the skin.
 - o painful sores or ulcers on the skin, lips or inside the mouth.
 - o tissue damage (necrotizing fasciitis).

If you have any signs or symptoms of severe skin reactions, stop taking SUTENT and call your healthcare provider or get medical help right away.

- **Thyroid problems.** Your healthcare provider may do tests to check your thyroid function during SUTENT treatment. Tell your healthcare provider if you have any of the following signs and symptoms during your treatment with SUTENT:

- | | |
|--|---|
| o tiredness that gets worse and does not go away | o fast heart rate |
| o loss of appetite | o weight gain or weight loss |
| o problems with heat | o feeling depressed |
| o feeling nervous or agitated, tremors | o irregular menstrual periods or no menstrual periods |
| o sweating | o headache |
| o nausea or vomiting | o hair loss |
| o diarrhea | |

- **Low blood sugar (hypoglycemia).** Low blood sugar can happen with SUTENT, and may cause you to become unconscious, or you may need to be hospitalized. Low blood sugar with SUTENT may be worse in people who have diabetes and take antidiabetic medicines. Your healthcare provider should check your blood sugar levels regularly during treatment with SUTENT and may need to adjust the dose of your antidiabetic medicines. Call your healthcare provider right away if you have any of the following signs or symptoms of low blood sugar during your treatment with SUTENT:

- | | |
|--------------|-------------------|
| o headache | o irritability |
| o drowsiness | o hunger |
| o weakness | o fast heart beat |
| o dizziness | o sweating |
| o confusion | o feeling jittery |

- **Jawbone problems (osteonecrosis).** Severe jawbone problems have happened in some people who take SUTENT. Certain risk factors such as taking a bisphosphonate medicine or having dental disease may increase your risk of getting osteonecrosis. Your healthcare provider may tell you to see your dentist before you start taking SUTENT. Your healthcare provider may tell you to avoid dental procedures, if possible, during your treatment with SUTENT, especially if you are receiving a bisphosphonate medicine into a vein (intravenous). Tell your healthcare provider if you plan to have any dental procedures before or during treatment with SUTENT.

- o You should stop taking SUTENT at least 3 weeks before planned dental procedures.
- o Your healthcare provider should tell you when you may start taking SUTENT again after dental procedures.
- **Wound healing problems.** Wound healing problems have happened in some people who take SUTENT. Tell your healthcare provider if you plan to have any surgery before or during treatment with SUTENT.
 - o You should stop taking SUTENT at least 3 weeks before planned surgery.
 - o Your healthcare provider should tell you when you may start taking SUTENT again after surgery.

Your healthcare provider may temporarily stop, reduce your dose, or permanently stop treatment with SUTENT if you develop serious side effects.

Common side effects of SUTENT include:

- | | |
|--|--|
| • tiredness | • vomiting |
| • weakness | • stomach-area (abdominal) pain |
| • diarrhea | • blisters or rash on the palms of your hands and soles of your feet |
| • pain, swelling or sores inside of your mouth | • high blood pressure |
| • nausea | • taste changes |
| • loss of appetite | • low platelet counts |
| • indigestion | |

The medicine in SUTENT is yellow, and it may make your skin look yellow. Your skin and hair may get lighter in color. SUTENT may also cause other skin problems including: dryness, thickness or cracking of the skin.

These are not all of the possible side effects of SUTENT.

Call your doctor for medical advice about side effects. You may report side effects to FDA at 1-800-FDA-1088.

How do I store SUTENT?

- Store SUTENT at room temperature, between 68°F to 77°F (20°C to 25°C).

Keep SUTENT and all medicines out of the reach of children.

General information about the safe and effective use of SUTENT.

Medicines are sometimes prescribed for purposes other than those listed in a Medication Guide. Do not use SUTENT for a condition for which it was not prescribed. Do not give SUTENT to other people, even if they have the same symptoms that you have. It may harm them.

You can ask your healthcare provider or pharmacist for information about SUTENT that is written for health professionals.

What are the ingredients in SUTENT?

Active ingredient: sunitinib malate

Inactive ingredients: mannitol, croscarmellose sodium, povidone (K-25), and magnesium stearate.

Orange gelatin capsule shells: titanium dioxide, and red iron oxide.

Caramel gelatin capsule shells: titanium dioxide, red iron oxide, yellow iron oxide, and black iron oxide.

Yellow gelatin capsule shells: titanium dioxide and yellow iron oxide.

White printing ink: shellac, propylene glycol, sodium hydroxide, povidone, and titanium dioxide.

Black printing ink: shellac, propylene glycol, potassium hydroxide and black iron oxide.



Distributed by

Pfizer Labs

Division of Pfizer Inc.

New York, NY 10001

LAB-0361-13.0

For more information go to www.SUTENT.com or call 1-877-5-SUTENT.

This Medication Guide has been approved by the U.S. Food and Drug Administration. Revised: October 2025

PRINCIPAL DISPLAY PANEL - 12.5 mg Capsule Bottle Label

ALWAYS DISPENSE WITH MEDICATION GUIDE

NDC 0069-0550-38

Pfizer

Sutent®

(sunitinib malate)

12.5 mg*


Capsules

28 Capsules

Rx only

Store at 20°C to 25°C (68°F to 77°F); excursions permitted to 15°C to 30°C (59°F to 86°F) [see USP Controlled Room Temperature]. Dispense in tight containers (USP).

DOSAGE AND USE
See accompanying prescribing information.
* Each capsule contains 12.5 mg sunitinib equivalent to 16.7 mg sunitinib malate.
Distributed by Pfizer Labs
Division of Pfizer Inc, NY, NY 10017
MADE IN SINGAPORE



PAA143512

ALWAYS DISPENSE WITH MEDICATION GUIDE

NDC 0069-0550-38

GTIN: 00300690550381

Sutent[®]
(sunitinib malate)

12.5 mg*

Capsules

28 Capsules Rx only

LOT/EXP

PRINTED ON LINE/
STAMPATO IN LINEA:



XXXXXX
YYYY MMM
SN XXXXXXXXXXXX

PRINCIPAL DISPLAY PANEL - 25 mg Capsule Bottle Label

ALWAYS DISPENSE WITH MEDICATION GUIDE

NDC 0069-0770-38

Pfizer

Sutent[®]
(sunitinib malate)

25 mg*


Capsules

28 Capsules

Rx only

Store at 20°C to 25°C (68°F to 77°F); excursions permitted to 15°C to 30°C (59°F to 86°F) [see USP Controlled Room Temperature]. Dispense in tight containers (USP).

DOSAGE AND USE
See accompanying prescribing information.
* Each capsule contains 25 mg sunitinib equivalent to 33.4 mg sunitinib malate.
Distributed by Pfizer Labs
Division of Pfizer Inc, NY, NY 10017
MADE IN SINGAPORE



PAA143511

ALWAYS DISPENSE WITH MEDICATION GUIDE

NDC 0069-0770-38

GTIN: 00300690770383

Sutent[®]
(sunitinib malate)

25 mg*

Capsules

28 Capsules Rx only

LOT/EXP

PRINTED ON LINE/
STAMPATO IN LINEA:



XXXXXX
YYYY MMM
SN XXXXXXXXXXXX

PRINCIPAL DISPLAY PANEL - 50 mg Capsule Bottle Label

ALWAYS DISPENSE WITH MEDICATION GUIDE

NDC 0069-0980-38

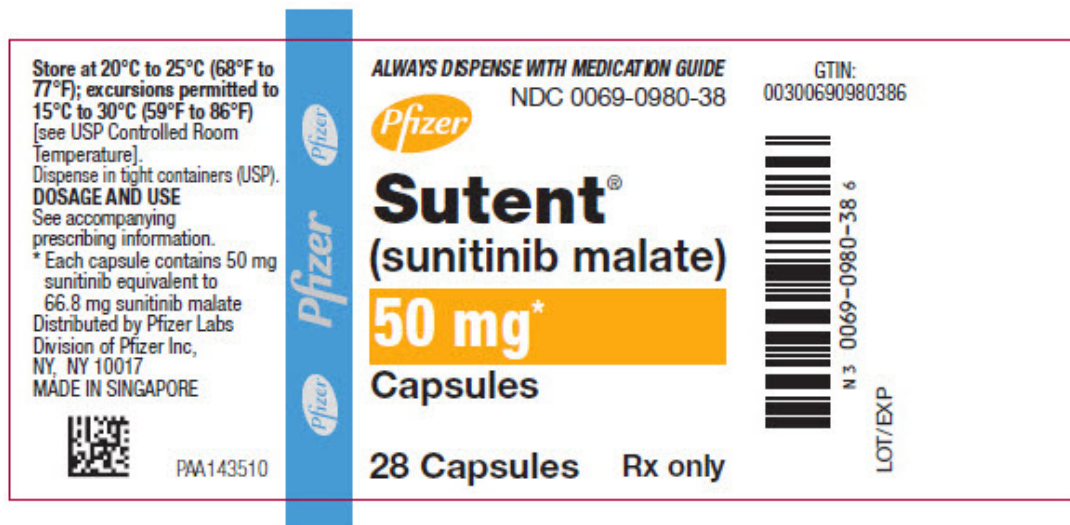
Pfizer

Sutent®
(sunitinib malate)

50 mg*

Capsules

28 Capsules
Rx only



PRINCIPAL DISPLAY PANEL - 37.5 mg Capsule Bottle Label

ALWAYS DISPENSE WITH MEDICATION GUIDE

NDC 0069-0830-38

Pfizer

Sutent®
(sunitinib malate)

37.5 mg*

Capsules

28 Capsules
Rx only

Store at 20°C to 25°C (68°F to 77°F); excursions permitted to 15°C to 30°C (59°F to 86°F) [see USP Controlled Room Temperature].
Dispense in tight containers (USP).
DOSAGE AND USE
See accompanying prescribing information.
* Each capsule contains 37.5 mg sunitinib equivalent to 50.1 mg sunitinib malate
Distributed by Pfizer Labs
Division of Pfizer Inc,
NY, NY 10017
MADE IN SINGAPORE



PAA143508

ALWAYS DISPENSE WITH MEDICATION GUIDE
NDC 0069-0830-38



Sutent[®]
(sunitinib malate)

37.5 mg*

Capsules

28 Capsules Rx only

GTIN:
00300690830384



N 3 0069-0830-38 4

LOT/EXP

PRINTED ON LINE/
STAMPATO IN LINEA:



XXXXXX

YYY MMM

SN XXXXXXXXXXXX

SUTENT

sunitinib malate capsule

Product Information

Product Type	HUMAN PRESCRIPTION DRUG	Item Code (Source)	NDC:0069-0550
Route of Administration	ORAL		

Active Ingredient/Active Moiety

Ingredient Name	Basis of Strength	Strength
SUNITINIB MALATE (UNII: LVX8N1UT73) (SUNITINIB - UNII:V99T50803M)	SUNITINIB	12.5 mg

Inactive Ingredients

Ingredient Name	Strength
MANNITOL (UNII: 3OWL53L36A)	
CROSCARMELOSE SODIUM (UNII: M28OL1HH48)	
POVIDONE K25 (UNII: K0KQV10C35)	
MAGNESIUM STEARATE (UNII: 70097M6I30)	
GELATIN, UNSPECIFIED (UNII: 2G86QN327L)	
TITANIUM DIOXIDE (UNII: 15FIX9V2JP)	
FERRIC OXIDE RED (UNII: 1K09F3G675)	
SHELLAC (UNII: 46N107B71O)	
PROPYLENE GLYCOL (UNII: 6DC9Q167V3)	
SODIUM HYDROXIDE (UNII: 55X04QC32I)	
POVIDONE, UNSPECIFIED (UNII: FZ989GH94E)	
POTASSIUM HYDROXIDE (UNII: WZH3C48M4T)	

Product Characteristics

Color	ORANGE	Score	no score
Shape	CAPSULE	Size	14mm
Flavor		Imprint Code	Pfizer;STN;12;5;mg
Contains			

Packaging

#	Item Code	Package Description	Marketing Start Date	Marketing End Date
1	NDC:0069-0550-38	28 in 1 BOTTLE; Type 0: Not a Combination Product	01/26/2006	

Marketing Information

Marketing Category	Application Number or Monograph Citation	Marketing Start Date	Marketing End Date
NDA	NDA021938	01/26/2006	

SUTENT

sunitinib malate capsule

Product Information

Product Type	HUMAN PRESCRIPTION DRUG	Item Code (Source)	NDC:0069-0770
Route of Administration	ORAL		

Active Ingredient/Active Moiety

Ingredient Name	Basis of Strength	Strength
SUNITINIB MALATE (UNII: LVX8N1UT73) (SUNITINIB - UNII:V99T50803M)	SUNITINIB	25 mg

Inactive Ingredients

Ingredient Name	Strength
MANNITOL (UNII: 3OWL53L36A)	
CROSCARMELLOSE SODIUM (UNII: M28OL1HH48)	
POVIDONE K25 (UNII: K0KQV10C35)	
MAGNESIUM STEARATE (UNII: 70097M6I30)	
GELATIN, UNSPECIFIED (UNII: 2G86QN327L)	
TITANIUM DIOXIDE (UNII: 15FIX9V2JP)	
FERRIC OXIDE RED (UNII: 1K09F3G675)	
FERRIC OXIDE YELLOW (UNII: EX438O2MRT)	
FERROSOFERRIC OXIDE (UNII: XM0M87F357)	
SHELLAC (UNII: 46N107B71O)	
PROPYLENE GLYCOL (UNII: 6DC9Q167V3)	
SODIUM HYDROXIDE (UNII: 55X04QC32I)	
POVIDONE, UNSPECIFIED (UNII: FZ989GH94E)	

POTASSIUM HYDROXIDE (UNII: WZH3C48M4T)

Product Characteristics

Color	ORANGE, BROWN (caramel)	Score	no score
Shape	CAPSULE	Size	16mm
Flavor		Imprint Code	Pfizer;STN;25;mg
Contains			

Packaging

#	Item Code	Package Description	Marketing Start Date	Marketing End Date
1	NDC:0069-0770-38	28 in 1 BOTTLE; Type 0: Not a Combination Product	01/26/2006	

Marketing Information

Marketing Category	Application Number or Monograph Citation	Marketing Start Date	Marketing End Date
NDA	NDA021938	01/26/2006	

SUTENT

sunitinib malate capsule

Product Information

Product Type	HUMAN PRESCRIPTION DRUG	Item Code (Source)	NDC:0069-0980
Route of Administration	ORAL		

Active Ingredient/Active Moiety

Ingredient Name	Basis of Strength	Strength
SUNITINIB MALATE (UNII: LVX8N1UT73) (SUNITINIB - UNII:V99T50803M)	SUNITINIB	50 mg

Inactive Ingredients

Ingredient Name	Strength
MANNITOL (UNII: 3OWL53L36A)	
CROSCARMELLOSE SODIUM (UNII: M28OL1HH48)	
POVIDONE K25 (UNII: K0KQV10C35)	
MAGNESIUM STEARATE (UNII: 70097M6I30)	
GELATIN, UNSPECIFIED (UNII: 2G86QN327L)	
TITANIUM DIOXIDE (UNII: 15FIX9V2JP)	
FERRIC OXIDE RED (UNII: 1K09F3G675)	
FERRIC OXIDE YELLOW (UNII: EX438O2MRT)	
FERROSOFERRIC OXIDE (UNII: XM0M87F357)	

SHELLAC (UNII: 46N107B71O)	
PROPYLENE GLYCOL (UNII: 6DC9Q167V3)	
SODIUM HYDROXIDE (UNII: 55X04QC32I)	
POVIDONE, UNSPECIFIED (UNII: FZ989GH94E)	
POTASSIUM HYDROXIDE (UNII: WZH3C48M4T)	

Product Characteristics

Color	BROWN (caramel)	Score	no score
Shape	CAPSULE	Size	18mm
Flavor		Imprint Code	Pfizer;STN;50;mg
Contains			

Packaging

#	Item Code	Package Description	Marketing Start Date	Marketing End Date
1	NDC:0069-0980-38	28 in 1 BOTTLE; Type 0: Not a Combination Product	01/26/2006	

Marketing Information

Marketing Category	Application Number or Monograph Citation	Marketing Start Date	Marketing End Date
NDA	NDA021938	01/26/2006	

SUTENT

sunitinib malate capsule

Product Information

Product Type	HUMAN PRESCRIPTION DRUG	Item Code (Source)	NDC:0069-0830
Route of Administration	ORAL		

Active Ingredient/Active Moiety

Ingredient Name	Basis of Strength	Strength
SUNITINIB MALATE (UNII: LVX8N1UT73) (SUNITINIB - UNII:V99T50803M)	SUNITINIB	37.5 mg

Inactive Ingredients

Ingredient Name	Strength
MANNITOL (UNII: 3OWL53L36A)	
CROSCARMELOSE SODIUM (UNII: M28OL1HH48)	
POVIDONE K25 (UNII: KOKQV10C35)	
MAGNESIUM STEARATE (UNII: 70097M6I30)	
GELATIN, UNSPECIFIED (UNII: 2G86QN327L)	

TITANIUM DIOXIDE (UNII: 15FIX9V2JP)				
FERRIC OXIDE YELLOW (UNII: EX438O2MRT)				
FERROSO FERRIC OXIDE (UNII: XM0M87F357)				
SHELLAC (UNII: 46N107B71O)				
PROPYLENE GLYCOL (UNII: 6DC9Q167V3)				
POTASSIUM HYDROXIDE (UNII: WZH3C48M4T)				
Product Characteristics				
Color	YELLOW	Score	no score	
Shape	CAPSULE	Size	16mm	
Flavor		Imprint Code	Pfizer;STN;37;5;mg	
Contains				
Packaging				
#	Item Code	Package Description	Marketing Start Date	Marketing End Date
1	NDC:0069-0830-38	28 in 1 BOTTLE; Type 0: Not a Combination Product	07/12/2014	
Marketing Information				
Marketing Category	Application Number or Monograph Citation		Marketing Start Date	Marketing End Date
NDA	NDA021938		07/12/2014	

Labeler - Pfizer Laboratories Div Pfizer Inc (134489525)

Establishment

Name	Address	ID/FEI	Business Operations
Pfizer Italia S.r.l.		458521908	ANALYSIS(0069-0550, 0069-0770, 0069-0830, 0069-0980) , MANUFACTURE(0069-0550, 0069-0770, 0069-0830, 0069-0980) , PACK(0069-0550, 0069-0770, 0069-0830, 0069-0980) , LABEL(0069-0550, 0069-0770, 0069-0830, 0069-0980)

Establishment

Name	Address	ID/FEI	Business Operations
Pfizer Asia Manufacturing Pte Ltd		936889401	ANALYSIS(0069-0550, 0069-0770, 0069-0830, 0069-0980) , API MANUFACTURE(0069-0550, 0069-0770, 0069-0830, 0069-0980)

Establishment

Name	Address	ID/FEI	Business Operations
Pfizer Ireland Pharmaceuticals Unlimited Company		985052076	ANALYSIS(0069-0550, 0069-0770, 0069-0830, 0069-0980) , API MANUFACTURE(0069-0550, 0069-0770, 0069-0830, 0069-0980)