

CHERRY COUGH DROP- menthol lozenge

American Sales

Disclaimer: Most OTC drugs are not reviewed and approved by FDA, however they may be marketed if they comply with applicable regulations and policies. FDA has not evaluated whether this product complies.

Menthol 5.8 mg

Active ingredient (in each drop)

Menthol 5.8 mg

Purpose

Cough suppressant / Oral anesthetic

Uses temporarily relieves:

cough as may occur with a cold

occasional minor irritation and sore throat

Warnings

Sore throat warning: if sore throat is severe, persists for more than 2 days, is accompanied or followed by fever, headache, rash, swelling, nausea, or vomiting, consult a doctor promptly. If sore mouth symptoms do not improve in 7 days, see your dentist or doctor promptly. These symptoms may be serious.

Ask a doctor before use if you have:

- persistent or chronic cough such as occurs with smoking, asthma, or emphysema
- cough accompanied by excessive phlegm (mucus)

Stop use and consult doctor if

- cough persists for more than 7 days, tends to recur, or is accompanied by fever, rash, or persistent headache. These could be signs of a serious condition.
- sore throat is severe, or irritation, pain or redness lasts or worsens
- sore mouth does not improve in 7 days

If pregnant or breast-feeding, ask a health professional before use.

Keep out of the reach of children.

Directions

adults and children 5 years and over - allow 1 drop to dissolve slowly in mouth. May be repeated every two hours as necessary or as directed by a doctor.

children under 5 years - ask a doctor

Other information

10 calories per drop

Inactive ingredients: Corn starch, corn syrup, eucalyptus oil, FD&C red no. 40, glycerin, medium chain triglycerides, natural and artificial flavors, soybean oil, sucrose,

water.

Questions? Or to report an adverse event call **1-800-245-2898**. Monday - Friday, 9AM to 4PM EST



30

COUGH DROPS

MENTHOL COUGH SUPPRESSANT & ORAL ANESTHETIC



PM 51217B

0617

Lot Code
Expiration Date

DISTRIBUTED BY FOODHOLD U.S.A., LLC
LANDOVER, MD 20785 • 1-877-848-8849
© 2017 S&S Brands, LLC
MADE IN USA OF U.S. AND IMPORTED INGREDIENTS
Quality guaranteed or your money back.

The product is not registered or distributed by the owner of the registered trademark.

Questions? Or to report an adverse event call 1-800-245-2898, Monday - Friday, 9AM to 4PM EST

Inactive ingredients: Corn starch, corn syrup, eucalyptus oil, FD&C red no. 40, glycerin, medium chain triglycerides, natural and artificial flavors, soybean oil, sucrose, water.

Other information ■ 10 calories per drop

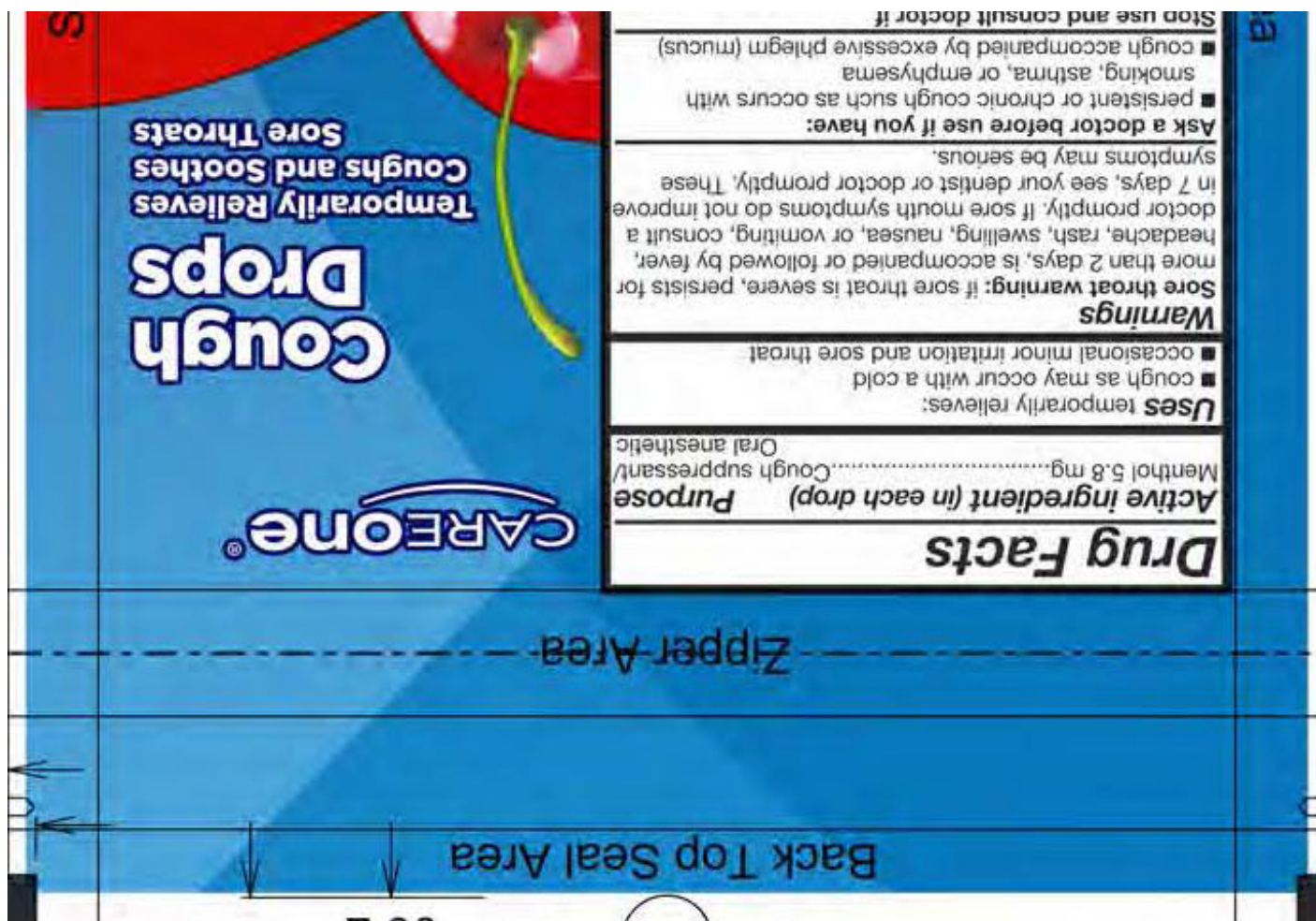
Directions
adults and children 5 years and over
allow 1 drop to dissolve slowly in mouth. May be repeated every two hours as necessary or as directed by a doctor.
children under 5 years ask a doctor

If pregnant or breast-feeding, ask a health professional before use. **Keep out of the reach of children.**
■ cough persists for more than 7 days, tends to recur, or is accompanied by fever, rash, or persistent headache.
■ sore throat is severe, or irritation, pain or redness lasts or worsens
■ sore mouth does not improve in 7 days

Side Seal Area

Side Seal Area

Cherry



CHERRY COUGH DROP

menthol lozenge

Product Information

Product Type	HUMAN OTC DRUG	Item Code (Source)	NDC:41520-026
Route of Administration	ORAL		

Active Ingredient/Active Moiety

Ingredient Name	Basis of Strength	Strength
MENTHOL (UNII: L7T10EIP3A) (MENTHOL - UNII:L7T10EIP3A)	MENTHOL	5.8 mg

Inactive Ingredients

Ingredient Name	Strength
WATER (UNII: 059QF0KO0R)	

Product Characteristics

Color	red	Score	score with uneven pieces
Shape	OVAL	Size	17mm

Flavor	CHERRY	Imprint Code	B
Contains			

Packaging

#	Item Code	Package Description	Marketing Start Date	Marketing End Date
1	NDC:41520-026-30	30 in 1 BAG; Type 0: Not a Combination Product	06/09/2016	



Marketing Information

Marketing Category	Application Number or Monograph Citation	Marketing Start Date	Marketing End Date
OTC monograph final	part341	06/09/2016	

Labeler - American Sales (809183973)

Registrant - BestCo Inc. (002149136)

Establishment

Name	Address	ID/FEI	Business Operations
BestCo Inc.		002149136	manufacture(41520-026)

Revised: 10/2023

American Sales