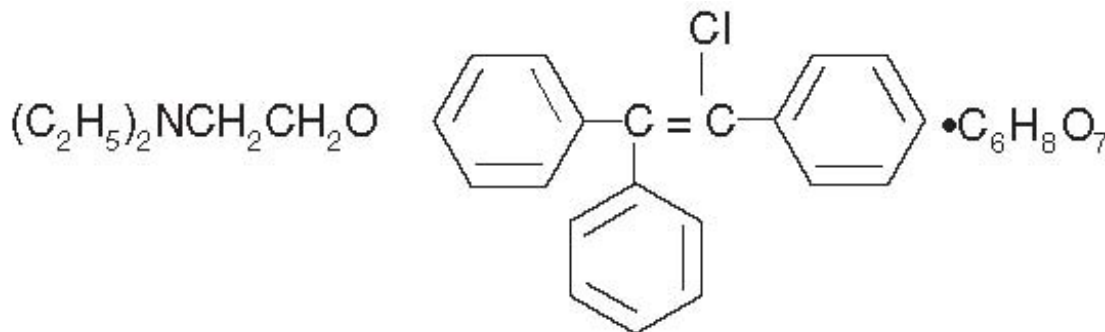


**CLOMIPHENE CITRATE- clomiphene citrate tablet**  
**Rebel Distributors Corp**

-----  
**Clomiphene Citrate**

**DESCRIPTION**

Clomiphene citrate tablets, USP is an orally administered, nonsteroidal, ovulatory stimulant designated chemically as 2-[p-(2chloro-1,2-diphenylvinyl)phenoxy] triethylamine citrate (1:1). It has the molecular formula of  $C_{26}H_{28}ClNO \cdot C_6H_8O_7$  and a molecular weight of 598.10. It is represented structurally as:



Clomiphene citrate is a white to pale yellow, essentially odorless, crystalline powder. It is freely soluble in methanol; soluble in ethanol; slightly soluble in acetone, water, and chloroform; and insoluble in ether.

Clomiphene citrate is a mixture of two geometric isomers [cis (zuclophene) and trans (enclomiphene)] containing between 30% and 50% of the cis-isomer.

Each off-white debossed tablet contains 50 mg clomiphene citrate USP. The tablet also contains the following inactive ingredients: corn starch, lactose monohydrate, magnesium stearate, pregelatinized corn starch, and sucrose.

**CLINICAL PHARMACOLOGY**

**Action**

Clomiphene citrate is a drug of considerable pharmacologic potency. With careful selection and proper management of the patient, clomiphene citrate has been demonstrated to be a useful therapy for the anovulatory patient desiring pregnancy.

Clomiphene citrate is capable of interacting with estrogen-receptor-containing tissues, including the hypothalamus, pituitary, ovary, endometrium, vagina, and cervix. It may compete with estrogen for estrogen-receptor-binding sites and may delay replenishment of intracellular estrogen receptors. Clomiphene citrate initiates a series of endocrine events culminating in a preovulatory gonadotropin surge and subsequent follicular rupture. The first endocrine event in response to a course of clomiphene therapy is an increase in the release of pituitary gonadotropins. This initiates steroidogenesis and folliculogenesis, resulting in growth of the ovarian follicle and an increase in the circulating level of estradiol. Following ovulation, plasma progesterone and estradiol rise and fall as they would in a normal ovulatory cycle.

Available data suggest that both the estrogenic and antiestrogenic properties of clomiphene may participate in the initiation of ovulation. The two clomiphene isomers have been found to have mixed

estrogenic and antiestrogenic effects, which may vary from one species to another. Some data suggest that zuclomiphene has greater estrogenic activity than enclomiphene.

Clomiphene citrate has no apparent progestational, androgenic, or antiandrogenic effects and does not appear to interfere with pituitary-adrenal or pituitary-thyroid function.

Although there is no evidence of a “carryover effect” of clomiphene citrate, spontaneous ovulatory menses have been noted in some patients after clomiphene citrate therapy.

### **Pharmacokinetics**

Based on early studies with <sup>14</sup>C-labeled clomiphene citrate, the drug was shown to be readily absorbed orally in humans and excreted principally in the feces. Cumulative urinary and fecal excretion of the <sup>14</sup>C averaged about 50% of the oral dose and 37% of an intravenous dose after 5 days. Mean urinary excretion was approximately 8% with fecal excretion of about 42%.

Some <sup>14</sup>C label was still present in the feces 6 weeks after administration. Subsequent single-dose studies in normal volunteers showed that zuclomiphene (cis) has a longer half-life than enclomiphene (trans). Detectable levels of zuclomiphene persisted for longer than a month in these subjects. This may be suggestive of stereo-specific enterohepatic recycling or sequestering of the zuclomiphene. Thus, it is possible that some active drug may remain in the body during early pregnancy in women who conceive in the menstrual cycle during clomiphene citrate therapy.

### **CLINICAL STUDIES**

During clinical investigations, 7578 patients received clomiphene citrate, some of whom had impediments to ovulation other than ovulatory dysfunction (see INDICATIONS AND USAGE). In those clinical trials, successful therapy characterized by pregnancy occurred in approximately 30% of these patients.

There were a total of 2635 pregnancies reported during the clinical trial period. Of those pregnancies, information on outcome was only available for 2369 of the cases. Table 1 summarizes the outcome of these cases.

Of the reported pregnancies, the incidence of multiple pregnancies was 7.98%: 6.9% twin, 0.5% triplet, 0.3% quadruplet, 0.1% quintuplet. Of the 165 twin pregnancies for which sufficient information was available, the ratio of monozygotic to dizygotic twins was about 1:5. Table 1 reports the survival rate of the live multiple births.

A sextuplet birth was reported after completion of original clinical studies; none of the sextuplets survived (each weighed less than 400 g), although each appeared grossly normal.

**Table 1. Outcome of Reported Pregnancies in Clinical Trials (n = 2369)**

Outcome	Total Number of Pregnancies	Survival Rate
Pregnancy Wastage		
Spontaneous Abortions	483*	
Stillbirths	24	
Live Births		
Single Births	1697	98.16%†
Multiple Births	165	83.26%†

\* Includes 28 ectopic pregnancies, 4 hydatiform moles, and 1 fetus papyraceous.

† Indicates percentage of surviving infants from these pregnancies.

The overall survival of infants from multiple pregnancies including spontaneous abortions, stillbirths, and neonatal deaths is 73%.

## INDICATIONS AND USAGE

Clomiphene citrate is indicated for the treatment of ovulatory dysfunction in women desiring pregnancy. Impediments to achieving pregnancy must be excluded or adequately treated before beginning clomiphene citrate therapy. Those patients most likely to achieve success with clomiphene therapy include patients with polycystic ovary syndrome (see **WARNINGS: Ovarian Hyperstimulation Syndrome**), amenorrhea-galactorrhea syndrome, psychogenic amenorrhea, post-oral-contraceptive amenorrhea, and certain cases of secondary amenorrhea of undetermined etiology.

Properly timed coitus in relationship to ovulation is important. A basal body temperature graph or other appropriate tests may help the patient and her physician determine if ovulation occurred. Once ovulation has been established, each course of clomiphene citrate should be started on or about the 5th day of the cycle. Long-term cyclic therapy is not recommended beyond a total of about six cycles (including three ovulatory cycles). (See **DOSAGE AND ADMINISTRATION** and **PRECAUTIONS**.)

Clomiphene citrate is indicated only in patients with demonstrated ovulatory dysfunction who meet the conditions described below (see **CONTRAINDICATIONS**):

1. Patients who are not pregnant.
2. Patients without ovarian cysts. Clomiphene citrate should not be used in patients with ovarian enlargement except those with polycystic ovary syndrome. Pelvic examination is necessary prior to the first and each subsequent course of clomiphene citrate treatment.
3. Patients without abnormal vaginal bleeding. If abnormal vaginal bleeding is present, the patient should be carefully evaluated to ensure that neoplastic lesions are not present.
4. Patients with normal liver function.

In addition, patients selected for clomiphene citrate therapy should be evaluated in regard to the following:

1. **Estrogen Levels.** Patients should have adequate levels of endogenous estrogen (as estimated from vaginal smears, endometrial biopsy, assay of urinary estrogen, or from bleeding in response to progesterone). Reduced estrogen levels, while less favorable, do not preclude successful therapy.
2. **Primary Pituitary or Ovarian Failure.** Clomiphene citrate therapy cannot be expected to substitute for specific treatment of other causes of ovulatory failure.
3. **Endometriosis and Endometrial Carcinoma.** The incidence of endometriosis and endometrial carcinoma increases with age as does the incidence of ovulatory disorders. Endometrial biopsy should always be performed prior to clomiphene citrate therapy in this population.
4. **Other Impediments to Pregnancy.** Impediments to pregnancy can include thyroid disorders, adrenal disorders, hyperprolactinemia, and male factor infertility.
5. **Uterine Fibroids.** Caution should be exercised when using clomiphene citrate in patients with uterine fibroids due to the potential for further enlargement of the fibroids.

There are no adequate or well-controlled studies that demonstrate the effectiveness of clomiphene citrate in the treatment of male infertility. In addition, testicular tumors and gynecomastia have been reported in males using clomiphene. The cause and effect relationship between reports of testicular tumors and the administration of clomiphene citrate is not known.

Although the medical literature suggests various methods, there is no universally accepted standard regimen for combined therapy (i.e., clomiphene citrate in conjunction with other ovulation-inducing drugs). Similarly, there is no standard clomiphene citrate regimen for ovulation induction in vitro

fertilization programs to produce ova for fertilization and reintroduction. Therefore, clomiphene citrate is not recommended for these uses.

## CONTRAINDICATIONS

### Hypersensitivity

Clomiphene citrate is contraindicated in patients with a known hypersensitivity or allergy to clomiphene citrate or to any of its ingredients.

### Pregnancy

Clomiphene citrate should not be administered during pregnancy. Clomiphene citrate may cause fetal harm in animals (see **Animal Fetotoxicity**). Although no causative evidence of a deleterious effect of clomiphene citrate therapy on the human fetus has been established, there have been reports of birth anomalies which, during clinical studies, occurred at an incidence within the range reported for the general population (see **Fetal/Neonatal Anomalies and Mortality; ADVERSE REACTIONS**).

To avoid inadvertent clomiphene citrate administration during early pregnancy, appropriate tests should be utilized during each treatment cycle to determine whether ovulation occurs. The patient should be evaluated carefully to exclude pregnancy, ovarian enlargement, or ovarian cyst formation between each treatment cycle. The next course of clomiphene citrate therapy should be delayed until these conditions have been excluded.

**Fetal/Neonatal Anomalies and Mortality.** The following fetal abnormalities have been reported subsequent to pregnancies following ovulation induction therapy with clomiphene citrate during clinical trials. Each of the following fetal abnormalities were reported at a rate of <1% (experiences are listed in order of decreasing frequency): Congenital heart lesions, Down syndrome, club foot, congenital gut lesions, hypospadias, microcephaly, harelip and cleft palate, congenital hip, hemangioma, undescended testicles, polydactyly, conjoined twins and teratomatous malformation, patent ductus arteriosus, amaurosis, arteriovenous fistula, inguinal hernia, umbilical hernia, syndactyly, pectus excavatum, myopathy, dermoid cyst of scalp, omphalocele, spina bifida occulta, ichthyosis, and persistent lingual frenulum. Neonatal death and fetal death/stillbirth in infants with birth defects have also been reported at a rate of <1%. The overall incidence of reported birth anomalies from pregnancies associated with maternal clomiphene citrate ingestion during clinical studies was within the range of that reported for the general population.

In addition, reports of birth anomalies have been received during postmarketing surveillance of clomiphene citrate (see **ADVERSE REACTIONS**).

**Animal Fetotoxicity.** Oral administration of clomiphene citrate to pregnant rats during organogenesis at doses of 1 to 2 mg/kg/day resulted in hydramnion and weak, edematous fetuses with wavy ribs and other temporary bone changes. Doses of 8 mg/kg/day or more also caused increased resorptions and dead fetuses, dystocia, and delayed parturition, and 40 mg/kg/day resulted in increased maternal mortality. Single doses of 50 mg/kg caused fetal cataracts, while 200 mg/kg caused cleft palate.

Following injection of clomiphene citrate 2 mg/kg to mice and rats during pregnancy, the offspring exhibited metaplastic changes of the reproductive tract. Newborn mice and rats injected during the first few days of life also developed metaplastic changes in uterine and vaginal mucosa, as well as premature vaginal opening and anovulatory ovaries. These findings are similar to the abnormal reproductive behavior and sterility described with other estrogens and antiestrogens.

In rabbits, some temporary bone alterations were seen in fetuses from dams given oral doses of 20 or 40 mg/kg/day during pregnancy, but not following 8 mg/kg/day. No permanent malformations were observed in those studies. Also, rhesus monkeys given oral doses of 1.5 to 4.5 mg/kg/day for various periods during pregnancy did not have any abnormal offspring.

**Liver Disease.** Clomiphene citrate therapy is contraindicated in patients with liver disease or a history

of liver dysfunction (see also **INDICATIONS AND USAGE** and **ADVERSE REACTIONS**).

**Abnormal Uterine Bleeding.** Clomiphene citrate is contraindicated in patients with abnormal uterine bleeding of undetermined origin (see **INDICATIONS AND USAGE**).

**Ovarian Cysts.** Clomiphene citrate is contraindicated in patients with ovarian cysts or enlargement not due to polycystic ovarian syndrome (see **INDICATIONS AND USAGE** and **WARNINGS**).

**Other.** Clomiphene citrate is contraindicated in patients with uncontrolled thyroid or adrenal dysfunction or in the presence of an organic intracranial lesion such as pituitary tumor (see **INDICATIONS AND USAGE**).

## **WARNINGS**

### **Visual Symptoms**

Patients should be advised that blurring or other visual symptoms such as spots or flashes (scintillating scotomata) may occasionally occur during therapy with clomiphene citrate. These visual symptoms increase in incidence with increasing total dose or therapy duration and generally disappear within a few days or weeks after clomiphene citrate is discontinued. Patients should be warned that these visual symptoms may render such activities as driving a car or operating machinery more hazardous than usual, particularly under conditions of variable lighting.

These visual symptoms appear to be due to intensification and prolongation of after-images. Symptoms often first appear or are accentuated with exposure to a brightly lit environment. While measured visual acuity usually has not been affected, a study patient taking 200 mg clomiphene citrate daily developed visual blurring on the 7th day of treatment, which progressed to severe diminution of visual acuity by the 10th day. No other abnormality was found, and the visual acuity returned to normal on the 3rd day after treatment was stopped.

Ophthalmologically definable scotomata and retinal cell function (electroretinographic) changes have also been reported. A patient treated during clinical studies developed phosphenes and scotomata during prolonged clomiphene citrate administration, which disappeared by the 32nd day after stopping therapy.

Postmarketing surveillance of adverse events has also revealed other visual signs and symptoms during clomiphene citrate therapy (see **ADVERSE REACTIONS**).

While the etiology of these visual symptoms is not yet understood, patients with any visual symptoms should discontinue treatment and have a complete ophthalmological evaluation carried out promptly.

### **Ovarian Hyperstimulation Syndrome**

The ovarian hyperstimulation syndrome (OHSS) has been reported to occur in patients receiving clomiphene citrate therapy for ovulation induction. In some cases, OHSS occurred following cyclic use of clomiphene citrate therapy or when clomiphene citrate was used in combination with gonadotropins. Transient liver function test abnormalities suggestive of hepatic dysfunction, which may be accompanied by morphologic changes on liver biopsy, have been reported in association with ovarian hyperstimulation syndrome (OHSS).

OHSS is a medical event distinct from uncomplicated ovarian enlargement. The clinical signs of this syndrome in severe cases can include gross ovarian enlargement, gastrointestinal symptoms, ascites, dyspnea, oliguria, and pleural effusion. In addition, the following symptoms have been reported in association with this syndrome: pericardial effusion, anasarca, hydrothorax, acute abdomen, hypotension, renal failure, pulmonary edema, intraperitoneal and ovarian hemorrhage, deep venous thrombosis, torsion of the ovary, and acute respiratory distress. The early warning signs of OHSS are abdominal pain and distention, nausea, vomiting, diarrhea, and weight gain. Elevated urinary steroid levels, varying degrees of electrolyte imbalance, hypovolemia, hemoconcentration, and hypoproteinemia may occur. Death due to hypovolemic shock, hemoconcentration, or thromboembolism

has occurred. Due to fragility of enlarged ovaries in severe cases, abdominal and pelvic examination should be performed very cautiously. If conception results, rapid progression to the severe form of the syndrome may occur.

To minimize the hazard associated with occasional abnormal ovarian enlargement associated with clomiphene citrate therapy, the lowest dose consistent with expected clinical results should be used. Maximal enlargement of the ovary, whether physiologic or abnormal, may not occur until several days after discontinuation of the recommended dose of clomiphene citrate. Some patients with polycystic ovary syndrome who are unusually sensitive to gonadotropin may have an exaggerated response to usual doses of clomiphene citrate. Therefore, patients with polycystic ovary syndrome should be started on the lowest recommended dose and shortest treatment duration for the first course of therapy (see **DOSAGE AND ADMINISTRATION**).

If enlargement of the ovary occurs, additional clomiphene citrate therapy should not be given until the ovaries have returned to pretreatment size, and the dosage or duration of the next course should be reduced. Ovarian enlargement and cyst formation associated with clomiphene citrate therapy usually regress spontaneously within a few days or weeks after discontinuing treatment. The potential benefit of subsequent clomiphene citrate therapy in these cases should exceed the risk. Unless surgical indication for laparotomy exists, such cystic enlargement should always be managed conservatively.

A causal relationship between ovarian hyperstimulation and ovarian cancer has not been determined. However, because a correlation between ovarian cancer and nulliparity, infertility, and age has been suggested, if ovarian cysts do not regress spontaneously, a thorough evaluation should be performed to rule out the presence of ovarian neoplasia.

## **PRECAUTIONS**

### **General**

Careful attention should be given to the selection of candidates for clomiphene citrate therapy. Pelvic examination is necessary prior to clomiphene citrate treatment and before each subsequent course (see **CONTRAINDICATIONS** and **WARNINGS**).

### **Information for Patients**

The purpose and risks of clomiphene citrate therapy should be presented to the patient before starting treatment. It should be emphasized that the goal of clomiphene citrate therapy is ovulation for subsequent pregnancy. The physician should counsel the patient with special regard to the following potential risks:

**Visual Symptoms:** Advise that blurring or other visual symptoms occasionally may occur during or shortly after clomiphene citrate therapy. Warn that visual symptoms may render such activities as driving a car or operating machinery more hazardous than usual, particularly under conditions of variable lighting (see **WARNINGS**).

The patient should be instructed to inform the physician whenever any unusual visual symptoms occur. If the patient has any visual symptoms, treatment should be discontinued and complete ophthalmologic evaluation performed.

**Abdominal/Pelvic Pain or Distention:** Ovarian enlargement may occur during or shortly after therapy with clomiphene citrate. To minimize the risks associated with ovarian enlargement, the patient should be instructed to inform the physician of any abdominal or pelvic pain, weight gain, discomfort, or distention after taking clomiphene citrate (see **WARNINGS**).

**Multiple Pregnancy:** Inform the patient that there is an increased chance of multiple pregnancy, including bilateral tubal pregnancy and coexisting tubal and intrauterine pregnancy, when conception occurs in relation to clomiphene citrate therapy. The potential complications and hazards of multiple pregnancy should be explained.

**Pregnancy Wastage and Birth Anomalies:** The physician should explain the assumed risk of any pregnancy, whether ovulation is induced with the aid of clomiphene citrate or occurs naturally. The patient should be informed of the greater risks associated with certain characteristics or conditions of any pregnant woman, e.g., age of female and male partner, history of spontaneous abortions, Rh genotype, abnormal menstrual history, infertility history, organic heart disease, diabetes, exposure to infectious agents such as rubella, familial history of birth anomaly, that may be pertinent to the patient for whom clomiphene citrate is being considered. Based upon the evaluation of the patient, genetic counseling may be indicated.

The overall incidence of reported birth anomalies from pregnancies associated with maternal clomiphene citrate ingestion during the investigational studies was within the range of that reported in published references for the general population. (See **CONTRAINDICATIONS: Pregnancy.**)

During clinical investigation, the experience from patients with known pregnancy outcome (Table 1) shows a spontaneous abortion rate of 20.4% and stillbirth rate of 1.0%. (See **CLINICAL PHARMACOLOGY.**)

### **Drug Interactions**

Drug interactions with clomiphene citrate have not been documented.

### **Carcinogenesis and Mutagenesis and Impairment of Fertility**

Long-term toxicity studies in animals have not been performed to evaluate the carcinogenic or mutagenic potential of clomiphene citrate.

Oral administration of clomiphene citrate to male rats at doses of 0.3 or 1 mg/kg/day caused decreased fertility, while higher doses caused temporary infertility. Oral doses of 0.1 mg/kg/day in female rats temporarily interrupted the normal cyclic vaginal smear pattern and prevented conception. Doses of 0.3 mg/kg/day slightly reduced the number of ovulated ova and corpora lutea, while 3 mg/kg/day inhibited ovulation.

### **Pregnancy**

Pregnancy Category X. (See **CONTRAINDICATIONS.**)

### **Nursing Mothers**

Text It is not known whether clomiphene citrate is excreted in human milk. Because many drugs are excreted in human milk, caution should be exercised if clomiphene citrate is administered to a nursing woman. In some patients, clomiphene citrate may reduce lactation.

### **Ovarian Cancer**

Prolonged use of clomiphene citrate tablets USP may increase the risk of a borderline or invasive ovarian tumor (see **ADVERSE REACTIONS**).

## **ADVERSE REACTIONS**

**Clinical Trial Adverse Events.** Clomiphene citrate, at recommended dosages, is generally well tolerated. Adverse reactions usually have been mild and transient and most have disappeared promptly after treatment has been discontinued. Adverse experiences reported in patients treated with clomiphene citrate during clinical studies are shown in Table 2.

**Table 2. Incidence of Adverse Events in Clinical Studies (Events Greater than 1%) (n = 8029\*)**

Adverse Event	%
---------------	---

Ovarian Enlargement	13.6
Vasomotor Flushes	10.4
Abdominal-Pelvic Discomfort/Distention/Bloating	5.5
Nausea and Vomiting	2.2
Breast Discomfort	2.1
Visual Symptoms	1.5
Blurred vision, lights, floaters, waves, unspecified visual complaints, photophobia, diplopia, scotomata, phosphenes	
Headache	1.3
Abnormal Uterine Bleeding	1.3
Intermenstrual spotting, menorrhagia	
*Includes 498 patients whose reports may have been duplicated in the event totals and could not be distinguished as such. Also, excludes 47 patients who did not report symptom data.	

The following adverse events have been reported in fewer than 1% of patients in clinical trials: Acute abdomen, appetite increase, constipation, dermatitis or rash, depression, diarrhea, dizziness, fatigue, hair loss/dry hair, increased urinary frequency/volume, insomnia, light-headedness, nervous tension, vaginal dryness, vertigo, weight gain/loss.

Patients on prolonged clomiphene citrate therapy may show elevated serum levels of desmosterol. This is most likely due to a direct interference with cholesterol synthesis. However, the serum sterols in patients receiving the recommended dose of clomiphene citrate are not significantly altered. Ovarian cancer has been infrequently reported in patients who have received fertility drugs. Infertility is a primary risk factor for ovarian cancer; however, epidemiology data suggest that prolonged use of clomiphene may increase the risk of a borderline or invasive ovarian tumor.

## **POST MARKETING ADVERSE EVENTS**

The following adverse experiences were reported spontaneously with clomiphene citrate. The cause and effect relationship of the listed events to the administration of clomiphene citrate is not known.

**Dermatologic:** Acne, allergic reaction, erythema, erythema multiforme, erythema nodosum, hypertrichosis, pruritus.

**Central Nervous System:** Migraine headache, paresthesia, seizure, stroke, syncope.

**Psychiatric:** Anxiety, irritability, mood changes, psychosis.

**Visual Disorders:** Abnormal accommodation, cataract, eye pain, macular edema, optic neuritis, photopsia, posterior vitreous detachment, retinal hemorrhage, retinal thrombosis, retinal vascular spasm, temporary loss of vision.

**Cardiovascular:** Arrhythmia, chest pain, edema, hypertension, palpitation, phlebitis, pulmonary embolism, shortness of breath, tachycardia, thrombophlebitis.

**Musculoskeletal:** Arthralgia, back pain, myalgia.

**Hepatic:** Transaminases increased, hepatitis.

**Neoplasms:** Liver (hepatic hemangiosarcoma, liver cell adenoma, hepatocellular carcinoma); breast (fibrocystic disease, breast carcinoma); endometrium (endometrial carcinoma); nervous system



(astrocytoma, pituitary tumor, prolactinoma, neurofibromatosis, glioblastoma multiforme, brain abscess); ovary (luteoma of pregnancy, dermoid cyst of the ovary, ovarian carcinoma); trophoblastic (hydatiform mole, choriocarcinoma); miscellaneous (melanoma, myeloma, perianal cysts, renal cell carcinoma, Hodgkin's lymphoma, tongue carcinoma, bladder carcinoma); and neoplasms of offspring (neuroectodermal tumor, thyroid tumor, hepatoblastoma, lymphocytic leukemia).

Genitourinary: Endometriosis, ovarian cyst (ovarian enlargement or cysts could, as such, be complicated by adnexal torsion), ovarian hemorrhage, tubal pregnancy, uterine hemorrhage.

Body as a Whole: Fever, tinnitus, weakness.

Other: Leukocytosis, thyroid disorder.

Fetal/Neonatal Anomalies. The following fetal abnormalities have also been reported during postmarketing surveillance: delayed development; abnormal bone development including skeletal malformations of the skull, face, nasal passages, jaw, hand, limb (ectromelia including amelia, hemimelia, and phocomelia), foot, and joints; tissue malformations including imperforate anus, tracheoesophageal fistula, diaphragmatic hernia, renal agenesis and dysgenesis, and malformations of the eye and lens (cataract), ear, lung, heart (ventricular septal defect and tetralogy of Fallot), and genitalia; as well as dwarfism, deafness, mental retardation, chromosomal disorders, and neural tube defects (including anencephaly).

## **DRUG ABUSE AND DEPENDENCE**

Tolerance, abuse, or dependence with clomiphene citrate has not been reported.

## **OVERDOSAGE**

### **Signs and Symptoms**

Toxic effects accompanying acute overdosage of clomiphene citrate have not been reported. Signs and symptoms of overdosage as a result of the use of more than the recommended dose during clomiphene citrate therapy include nausea, vomiting, vasomotor flushes, visual blurring, spots or flashes, scotomata, ovarian enlargement with pelvic or abdominal pain. (See **CONTRAINDICATIONS: Ovarian Cysts.**)

**Oral LD<sub>50</sub>.** The acute oral LD<sub>50</sub> of clomiphene citrate is 1700 mg/kg in mice and 5750 mg/kg in rats. The toxic dose in humans is not known.

**Dialysis.** It is not known if clomiphene citrate is dialyzable.

### **Treatment**

In the event of overdose, appropriate supportive measures should be employed in addition to gastrointestinal decontamination.

## **DOSAGE AND ADMINISTRATION**

### **General Considerations**

The workup and treatment of candidates for clomiphene citrate therapy should be supervised by physicians experienced in management of gynecologic or endocrine disorders. Patients should be chosen for therapy with clomiphene citrate only after careful diagnostic evaluation (see **INDICATIONS AND USAGE**). The plan of therapy should be outlined in advance. Impediments to achieving the goal of therapy must be excluded or adequately treated before beginning clomiphene citrate. The therapeutic objective should be balanced with potential risks and discussed with the patient and others involved in the achievement of a pregnancy.

Ovulation most often occurs from 5 to 10 days after a course of clomiphene citrate. Coitus should be timed to coincide with the expected time of ovulation. Appropriate tests to determine ovulation may be

useful during this time.

### **Recommended Dosage**

Treatment of the selected patient should begin with a low dose, 50 mg daily (1 tablet) for 5 days. The dose should be increased only in those patients who do not ovulate in response to cyclic 50 mg clomiphene citrate. A low dosage or duration of treatment course is particularly recommended if unusual sensitivity to pituitary gonadotropin is suspected, such as in patients with polycystic ovary syndrome (see **WARNINGS; Ovarian Hyperstimulation Syndrome**).

The patient should be evaluated carefully to exclude pregnancy, ovarian enlargement, or ovarian cyst formation between each treatment cycle.

If progestin-induced bleeding is planned, or if spontaneous uterine bleeding occurs prior to therapy, the regimen of 50 mg daily for 5 days should be started on or about the 5th day of the cycle. Therapy may be started at any time in the patient who has had no recent uterine bleeding. When ovulation occurs at this dosage, there is no advantage to increasing the dose in subsequent cycles of treatment.

If ovulation does not appear to occur after the first course of therapy, a second course of 100 mg daily (two 50 mg tablets given as a single daily dose) for 5 days should be given. This course may be started as early as 30 days after the previous one after precautions are taken to exclude the presence of pregnancy. Increasing the dosage or duration of therapy beyond 100 mg/day for 5 days is not recommended.

The majority of patients who are going to ovulate will do so after the first course of therapy. If ovulation does not occur after three courses of therapy, further treatment with clomiphene citrate is not recommended and the patient should be reevaluated. If three ovulatory responses occur, but pregnancy has not been achieved, further treatment is not recommended. If menses does not occur after an ovulatory response, the patient should be reevaluated. Long-term cyclic therapy is not recommended beyond a total of about six cycles (see **PRECAUTIONS**).

### **HOW SUPPLIED**

Clomiphene citrate tablets, USP, 50 mg are round, off-white, debossed "Par 701" with bisect on one side and plain on the other. They are supplied in cartons of 10 (NDC 21695-114-10).

**Storage** - Store at controlled room temperature 15°-30°C (59°-86°F). Protect from heat, light, and excessive humidity, and store in closed containers.

Manufactured by:

**PAR PHARMACEUTICAL COMPANIES, INC.**

Spring Valley, N Y 10977

Revised: 9/07 OS701-54-1-05

Repackaged by:

**REBEL DISTRIBUTORS CORP**

Thousand Oaks, CA 91320

**PRINCIPAL DISPLAY PANEL – CARTON 50MG/10 TABLETS**



## CLOMIPHENE CITRATE

clomiphene citrate tablet

### Product Information

<b>Product Type</b>	HUMAN PRESCRIPTION DRUG	<b>Item Code (Source)</b>	NDC:21695-114(NDC:49884-701)
<b>Route of Administration</b>	ORAL		

### Active Ingredient/Active Moiety

Ingredient Name	Basis of Strength	Strength
CLOMIPHENE CITRATE (UNII: 1B8447E7YI) (CLOMIPHENE - UNII:1HRS458QU2)	CLOMIPHENE CITRATE	50 mg

### Product Characteristics

<b>Color</b>	white (OFF-WHITE)	<b>Score</b>	2 pieces
<b>Shape</b>	ROUND	<b>Size</b>	9mm
<b>Flavor</b>		<b>Imprint Code</b>	Par;701
<b>Contains</b>			

### Packaging

#	Item Code	Package Description	Marketing Start Date	Marketing End Date
1	NDC:21695-114-10	1 in 1 CARTON		
1		10 in 1 BLISTER PACK		

### Marketing Information

Marketing Category	Application Number or Monograph Citation	Marketing Start Date	Marketing End Date
ANDA	ANDA075528	08/30/1999	

**Labeler** - Rebel Distributors Corp (118802834)

<b>Establishment</b>			
<b>Name</b>	<b>Address</b>	<b>ID/FEI</b>	<b>Business Operations</b>
Rebel Distributors Corp		118802834	RELABEL, REPACK

Revised: 9/2010

Rebel Distributors Corp