

**ALLOPURINOL- allopurinol tablet**  
**ST. MARY'S MEDICAL PARK PHARMACY**

**HIGHLIGHTS OF PRESCRIBING INFORMATION**

**These highlights do not include all the information needed to use ALLOPURINOL TABLETS safely and effectively. See full prescribing information for ALLOPURINOL TABLETS.**

**ALLOPURINOL tablets, for oral use**

**Initial U.S. Approval: 1966**

**INDICATIONS AND USAGE**

Allopurinol Tablets are xanthine oxidase inhibitor indicated for the management of:

- Adult patients with signs and symptoms of primary or secondary gout (acute attacks, tophi, joint destruction, uric acid lithiasis, and/or nephropathy) ( 1)
- Adult and pediatric patients with leukemia, lymphoma and solid tumor malignancies who are receiving cancer therapy which causes elevations of serum and urinary uric acid levels ( 1)
- Adult patients with recurrent calcium oxalate calculi whose daily uric acid excretion exceeds 800 mg/day in male patients and 750 mg/day in female patients, despite lifestyle changes ( 1)

Limitations of Use

Allopurinol Tablets are not recommended for the treatment of asymptomatic hyperuricemia.(1)

**DOSAGE AND ADMINISTRATION**

- Gout: Prior to initiating treatment assess serum uric acid level, complete blood count, chemistry panel, liver and kidney function tests. Prophylactic treatment for gout flares is recommended. ( 2.1, 2.2)
  - Patients with normal kidney function: Initial dosage is 100 mg orally daily. Increase by 100 mg weekly increments until serum uric acid of 6 mg/dl or less is reached (maximum 800 mg daily). ( 2.3)
  - Patients with impaired kidney function: The initial dosage is 50 mg orally daily. Follow recommendations for titration in patients with renal impairment until target serum uric acid level is reached. ( 2.6)
  - See complete information in the Full Prescribing Information (FPI).
- Hyperuricemia Associated with Cancer Therapy: The recommended dosage is:
  - Adults: 300 mg to 800 mg orally daily.
  - Pediatric patients: 100 mg/m<sup>2</sup> orally every 8 hours to 12 hours (10 mg/kg/day, maximum 800 mg/day)
  - See complete information in the FPI. ( 2.4, 2.6)
- Recurrent Calcium Oxalate Calculi: The recommended initial dosage in patients with normal kidney function is 200 mg to 300 mg orally daily. ( 2.5)
  - Dosage in Patients with Renal Impairment: See FPI for dosage modifications in patients with renal impairment. ( 2.6)

**DOSAGE FORMS AND STRENGTHS**

Tablets: 100 mg, 200 mg and 300 mg, functionally scored. (3)

**CONTRAINDICATIONS**

Known hypersensitivity to allopurinol or to any of the ingredients of allopurinol tablets. (4)

**WARNINGS AND PRECAUTIONS**

- Skin Rash and Hypersensitivity: Allopurinol has been associated with serious and sometimes fatal dermatological reactions. Discontinue allopurinol tablets at the first appearance of skin rash or other signs of hypersensitivity reaction. ( 5.1)
- Gout Flares: May occur during initiation of treatment. Concurrent prophylactic treatment with colchicine or anti-inflammatory agents is recommended. ( 5.2)
- Nephrotoxicity: Allopurinol may affect kidney function. Patients with decreased kidney function require lower doses of allopurinol tablets. ( 5.3)
- Hepatotoxicity: Cases of reversible hepatotoxicity have occurred. If signs and symptoms of hepatotoxicity develop, evaluate liver function. ( 5.4)
- Myelosuppression: Bone marrow suppression has been reported with allopurinol. ( 5.5)
- Potential Effect on Driving and Use of Machinery: Drowsiness, somnolence and dizziness have been reported in patients taking allopurinol tablets. ( 5.6)

**ADVERSE REACTIONS**

Most common adverse reactions (incidence > 1%) are nausea, diarrhea, and increase in liver function tests. ( 6)

**To report SUSPECTED ADVERSE REACTIONS, contact 1-833-856-0880 or FDA at 1-800-FDA-1088 or [www.fda.gov/medwatch](http://www.fda.gov/medwatch).**

**DRUG INTERACTIONS**

- The following drugs may increase the risk of serious skin reactions: bendamustine, thiazide diuretics, ampicillin and amoxicillin. ( 7.1)
- Capecitabine: Avoid concomitant use. ( 7.2)
- Mercaptopurine or Azathioprine: Reduce mercaptopurine or azathioprine dose as recommended in the respective prescribing information. ( 7.2)
- Pegloticase: Discontinue and refrain from initiating treatment with allopurinol tablets. ( 7.2)
- See FPI for complete list of significant drug interactions. ( 7.2)

**USE IN SPECIFIC POPULATIONS**

- Pregnancy: May cause fetal harm. ( 8.1)
- Lactation: Advise not to breastfeed. ( 8.2)

---

**FULL PRESCRIBING INFORMATION: CONTENTS\***

**1 INDICATIONS AND USAGE**

**2 DOSAGE AND ADMINISTRATION**

- 2.1 Recommended Testing Prior to Treatment Initiation
- 2.2 Recommended Prophylaxis for Gout Flares
- 2.3 Recommended Dosage for Gout
- 2.4 Recommended Dosage for Hyperuricemia Associated with Cancer Therapy
- 2.5 Recommended Dosage for Management of Recurrent Calcium Oxalate Calculi in Hyperuricosuric Patients
- 2.6 Recommended Dosage in Patients with Renal Impairment

**3 DOSAGE FORMS AND STRENGTHS**

**4 CONTRAINDICATIONS**

**5 WARNINGS AND PRECAUTIONS**

- 5.1 Skin Rash and Hypersensitivity
- 5.2 Gout Flares
- 5.3 Nephrotoxicity
- 5.4 Hepatotoxicity
- 5.5 Myelosuppression
- 5.6 Potential Effect on Driving and Use of Machinery

**6 ADVERSE REACTIONS**

**7 DRUG INTERACTIONS**

- 7.1 Drugs Known to Affect the Occurrence of Skin Rash and Hypersensitivity
- 7.2 Drugs Known to Have Clinically Important Drug Interactions with Allopurinol Tablets

**8 USE IN SPECIFIC POPULATIONS**

- 8.1 Pregnancy
- 8.2 Lactation
- 8.4 Pediatric Use
- 8.6 Renal Impairment

**10 OVERDOSAGE**

**11 DESCRIPTION**

**12 CLINICAL PHARMACOLOGY**

- 12.1 Mechanism of Action
- 12.2 Pharmacodynamics
- 12.3 Pharmacokinetics
- 12.5 Pharmacogenomics

**13 NONCLINICAL TOXICOLOGY**

- 13.1 Carcinogenesis, Mutagenesis, Impairment of Fertility

**16 HOW SUPPLIED/STORAGE AND HANDLING**

**17 PATIENT COUNSELING INFORMATION**

\* Sections or subsections omitted from the full prescribing information are not listed.

---

**FULL PRESCRIBING INFORMATION**

**1 INDICATIONS AND USAGE**

Allopurinol Tablets are indicated for:

- The management of adults with signs and symptoms of primary or secondary gout (acute attacks, tophi, joint destruction, uric acid lithiasis, and/or nephropathy)
- The management of adult and pediatric patients with leukemia, lymphoma and solid tumor malignancies who are receiving cancer therapy which causes elevations of serum and urinary uric acid levels
- The management of adult patients with recurrent calcium oxalate calculi whose daily uric acid excretion exceeds 800 mg/day in male patients and 750 mg/day in female

patients, despite lifestyle changes (such as reduction of dietary sodium, non-dairy animal protein, oxalate rich foods, refined sugars and increases in oral fluids and fruits and vegetables)

#### Limitations of Use

Allopurinol Tablets are not recommended for the treatment of asymptomatic hyperuricemia.

## **2 DOSAGE AND ADMINISTRATION**

### **2.1 Recommended Testing Prior to Treatment Initiation**

Prior to initiating treatment with allopurinol tablets in patients with gout, assess the following baseline tests: serum uric acid level, complete blood count, chemistry panel, liver function tests (serum alanine aminotransferase [ALT], aspartate aminotransferase [AST], alkaline phosphatase, and total bilirubin), kidney function tests (serum creatinine and eGFR).

### **2.2 Recommended Prophylaxis for Gout Flares**

Gout flares may occur after initiation of allopurinol tablets due to changing serum uric acid levels resulting in mobilization of urate from tissue deposits. Flare prophylaxis with colchicine or an anti-inflammatory agent according to practice guidelines is recommended upon initiation of allopurinol tablets. While adjusting the dosage of allopurinol tablets in patients who are being treated with colchicine and/or anti-inflammatory agents, continue flare prophylaxis drugs until serum uric acid has been normalized and the patient has been free of gout flares for several months. If a gout flare occurs during allopurinol tablets treatment, allopurinol tablets need not be discontinued. Manage the gout flare concurrently, as appropriate for the individual patient [see *Warnings and Precautions ( 5.2)* ] .

### **2.3 Recommended Dosage for Gout**

The initial recommended dosage for the management of gout is 100 mg orally daily, with weekly increments of 100 mg, until a serum uric acid level of 6 mg/dL or less is reached. Initiating treatment with lower dosages of allopurinol tablets and titrating slowly, decreases the risk of gout flares and drug induced serious adverse reactions. In patients with renal impairment the initial dosage is 50 mg orally daily with lower dose increases until serum uric acid level of 6 mg/dL or less is reached. For complete dosage recommendations for patients with renal impairment see Table 1 [see *Dosage and Administration ( 2.6)* ] .

The minimal effective dosage is 100 mg to 200 mg daily and the maximal recommended dosage is 800 mg daily. The appropriate dosage may be administered in divided doses or as a single equivalent dose with the 300 mg tablet. Doses in excess of 300 mg should be administered in divided doses. Monitor patients' kidney function during the early stages of administration of allopurinol tablets and decrease the dosage or withdraw the drug if persistent abnormalities in kidney function occur [see *Dosage and Administration ( 2.6), Warnings and Precautions ( 5.3), Use in Specific Populations ( 8.6)* ] .

The dosage of allopurinol tablets to achieve control of gout varies with the severity of the disease. In general, gout control is achieved with 200 mg to 300 mg daily in patients with mild gout, and with 400 mg to 600 mg daily in patients with moderate to severe tophaceous gout. Gout attacks usually become shorter and less severe after several months of therapy.

If a dose of allopurinol tablets is missed, there is no need to double the dose at the next scheduled time. Allopurinol tablets are generally better tolerated if taken following meals. A fluid intake sufficient to yield a daily urinary output of at least 2 liters and the maintenance of a neutral or preferably, slightly alkaline urine are desirable.

Inform patients of the possibility of gout flares [see *Warnings and Precautions ( 5.2)* ] . Instruct them to remain on allopurinol tablets if this occurs and to increase fluid intake

during therapy to prevent kidney stones.

#### Concurrent Use of Uricosuric Agents

Some patients, may benefit using uricosuric agents concurrently, to reduce serum uric acid to target levels.

When transferring a patient from a uricosuric agent to allopurinol tablets, reduce the dose of the uricosuric agent over a period of several weeks and increase the dose of allopurinol tablets gradually to the required dose needed to maintain target serum uric acid level.

### **2.4 Recommended Dosage for Hyperuricemia Associated with Cancer Therapy**

Initiate therapy with allopurinol tablets 24 hours to 48 hours before the start of chemotherapy known to cause tumor cell lysis. Administer fluids sufficient to yield a daily urinary output of at least 2 liters in adults (at least 100 mL/m<sup>2</sup>/hour in pediatric patients) with a neutral or, preferably, slightly alkaline urine.

The recommended dosage of allopurinol tablets are:

- Adult patients - 300 mg to 800 mg orally daily
- Pediatric patients - 100 mg/m<sup>2</sup> orally every 8 hours to 12 hours (10 mg/kg/day, maximum 800 mg/day). In patients with body surface area < 0.5 m<sup>2</sup>, consider using an alternative allopurinol formulation.

The dosage of allopurinol tablets to maintain normal or near-normal serum uric acid varies with the severity of the disease. Monitor serum uric acid levels at least daily and administer allopurinol tablets at a dose and frequency to maintain the serum uric acid within the normal range. Discontinue allopurinol tablets when the risk of tumor lysis has abated (2 days to 3 days from start of chemotherapy). For complete dosage recommendations for patients with renal impairment, see Table 2 [see *Dosage and Administration* ( 2.6)] .

### **2.5 Recommended Dosage for Management of Recurrent Calcium Oxalate Calculi in Hyperuricosuric Patients**

The recommended dosage for the management of recurrent calcium oxalate stones in hyperuricosuric patients is 200 mg to 300 mg orally daily in divided doses or as the single equivalent. This dose may be adjusted depending upon the resultant control of the hyperuricosuria based upon subsequent 24-hour urinary urate determinations.

### **2.6 Recommended Dosage in Patients with Renal Impairment**

The recommended initial dosages of allopurinol tablets in adult patients with renal impairment are shown in Tables 1 and 2 [see *Use in Specific Populations* ( 8.6)] .

#### Patients with Gout

The recommended initial dosages in adult patients with gout with impaired kidney function are shown in Table 1 [see *Use in Specific Populations* ( 8.6)] .

Initiate treatment with a lower dose of allopurinol tablets and increase the dose gradually in 50 mg/day increments every 2 weeks to 4 weeks in patients with renal impairment to decrease the risk of drug induced serious adverse reactions. Use the lowest dose possible to achieve the desired effect on serum and/or urine uric acid. Monitor kidney function in gout patients with chronic kidney disease closely when initiating treatment with allopurinol tablets and decrease or withdraw the drug if increased abnormalities in kidney function appear and persist.

### **Table 1. Recommended Initial Dosage in Adult Patients with Gout**

eGFR	Initial Dosage
> 60 mL/minute	No dosage modification
> 30 to 60 mL/minute	50 mg daily
> 15 to 30 mL/minute	50 mg every other day
5 to 15 mL/minute	50 mg twice weekly
< 5 mL/minute	50 mg once weekly

The maximum dosage that should be used in patients with various levels of renal impairment is not defined at different eGFR levels.

#### Patients with Recurrent Calcium Oxalate Calculi

Data are insufficient to provide dosage recommendations for the treatment of recurrent calcium oxalate calculi in patients with renal impairment. Allopurinol and its metabolites are excreted by the kidney, and accumulation of the drug can occur in renal failure [see *Warnings and Precautions ( 5.3) and Use in Specific Populations ( 8.6)* ] .

-

#### Hyperuricemia Associated with Cancer Therapy

The recommended dosage of allopurinol tablets for the management of hyperuricemia associated with cancer therapy in adult patients with renal impairment is shown in Table 2 [see *Use in Specific Populations ( 8.6)* ] .

**Table 2. Recommended Dosage of Allopurinol Tablets in Adult Patients for Management of Hyperuricemia Associated with Cancer Therapy with Renal Impairment**

eGFR	Recommended Dosage
> 20 mL/min to 60 mL/min	No dosage modification
10 mL/min to 20 mL/min	200 mg/day
< 10 mL/min	100 mg/day
On dialysis	50 mg every 12 hours, or 100 mg every 24 hours

Treatment with allopurinol tablets has not been studied in pediatric patients with severe renal impairment (eGFR < 20 mL/min) or on dialysis. There is insufficient information to establish dosing for allopurinol tablets in pediatric patients with renal impairment. In these patients, consider the risks and potential benefits before initiating treatment with allopurinol tablets [see *Warnings and Precautions ( 5.3) and Use in Specific Populations ( 8.6)* ] .

### **3 DOSAGE FORMS AND STRENGTHS**

Allopurinol Tablets have functional scoring and are available in the following strengths:

- 100 mg: White to off white scored, flat cylindrical tablet with "I" and '135' on either side of the break line on one side and plain on other side.
- 200 mg: White to off white round shape beveled concave tablets embossed with "E" and "35" on the either side of break line on upper punch and plain on lower punch.
- 300 mg: Peach, scored, flat cylindrical tablet with "I" and '136' on either side of the break line on one side and plain on other side.

### **4 CONTRAINDICATIONS**

Allopurinol Tablets are contraindicated in patients with a history of hypersensitivity

reaction to allopurinol or to any of the ingredients of allopurinol tablets.

## **5 WARNINGS AND PRECAUTIONS**

### **5.1 Skin Rash and Hypersensitivity**

Serious and sometimes fatal dermatologic reactions, including toxic epidermal necrolysis (TEN), Stevens-Johnson syndrome (SJS), and drug reaction with eosinophilia and systemic symptoms (DRESS) have been reported in patients taking allopurinol [see *Adverse Reactions ( 6)*]. These reactions occur in approximately 5 in 10,000 (0.05%) patients taking allopurinol. Other serious hypersensitivity reactions that have been reported include exfoliative, urticarial and purpuric lesions, generalized vasculitis, and irreversible hepatotoxicity. Discontinue allopurinol tablets permanently at the first appearance of skin rash or other signs which may indicate a hypersensitivity reaction.

The HLA-B\*58:01 allele is a genetic marker for severe skin reactions indicative of hypersensitivity to allopurinol. Patients who carry the HLA-B\*58:01 allele are at a higher risk of allopurinol hypersensitivity syndrome (AHS), but hypersensitivity reactions have been reported in patients who do not carry this allele. The frequency of this allele is higher in individuals of African, Asian (e.g., Han Chinese, Korean, Thai), and Native Hawaiian/Pacific Islander ancestry [see *Clinical Pharmacology ( 12.5)*]. The use of allopurinol tablets are not recommended in HLA- B\*58:01 positive patients unless the benefits clearly outweigh the risks.

Consider screening for HLA-B\*5801 before starting treatment with allopurinol tablets in patients from populations in which the prevalence of this HLA-B\*5801 allele is known to be high. Screening is generally not recommended in patients from populations in which the prevalence of HLA-B\*58:01 is low, or in current allopurinol users, as the risk of SJS/TEN/DRESS is largely confined to the first few months of therapy, regardless of HLA-B\*58:01 status.

Hypersensitivity reactions to allopurinol tablets may be increased in patients with decreased kidney function receiving thiazide diuretics and allopurinol tablets concurrently. Concomitant use of the following drugs may also increase the risk of skin rash, which may be severe: bendamustine, ampicillin and amoxicillin [see *Drug Interactions ( 7.1)*].

Discontinue allopurinol tablets immediately if a skin rash develops. Instruct patients to stop taking allopurinol tablets immediately and seek medical attention promptly if they develop a rash.

### **5.2 Gout Flares**

Gout flares have been reported during initiation of treatment with allopurinol tablets, even when normal or subnormal serum uric acid levels have been attained due to the mobilization of urates from tissue deposits. Even with adequate therapy with allopurinol tablets, it may require several months to deplete the uric acid pool sufficiently to achieve control of the flares. The flares typically become shorter and less severe after several months of therapy.

In order to prevent gout flares when treatment with allopurinol tablets is initiated, concurrent prophylactic treatment with colchicine or an anti-inflammatory agent is recommended [see *Dosage and Administration ( 2.2)*]. Advise patients to continue allopurinol tablets and prophylactic treatment even if gout flares occur, as it may take months to achieve control of gout flares.

### **5.3 Nephrotoxicity**

Treatment with allopurinol tablets may result in acute kidney injury due to formation of xanthine calculi or due to precipitation of urates in patients receiving concomitant uricosuric agents. Patients with pre-existing kidney disease, including chronic kidney disease or history of kidney stones, may be at increased risk for worsening of kidney function or acute kidney injury due to xanthine calculi while receiving treatment with allopurinol tablets.

In patients receiving allopurinol tablets for the management of gout or the management

of recurrent calcium oxalate calculi, monitor kidney function frequently during the early stages of allopurinol administration. Maintain fluid intake sufficient to yield a urinary output of at least 2 liters per day of neutral or, preferably, slightly alkaline urine to avoid the possibility of formation of xanthine calculi and help prevent renal precipitation of urates in patients receiving concomitant uricosuric agents.

In patients receiving allopurinol tablets for the management of tumor lysis syndrome, monitor kidney function at least daily during the early stages of allopurinol administration. Maintain fluid intake sufficient to yield a urinary output of at least 2 liters per day in adults and at least 2 liters/m<sup>2</sup>/day (or at least 100 mL/m<sup>2</sup>/hour) in pediatric patients [see *Dosage and Administration* ( 2.4)] .

#### **5.4 Hepatotoxicity**

Cases of reversible clinical hepatotoxicity have occurred in patients taking allopurinol tablets, and in some patients, asymptomatic rises in serum alkaline phosphatase or serum transaminase have been observed. If anorexia, weight loss, or pruritus develop in patients on allopurinol tablets, evaluate liver enzymes. In patients with pre-existing liver disease, monitor liver enzymes periodically. Discontinue allopurinol tablets in patients with elevated liver enzymes.

#### **5.5 Myelosuppression**

Myelosuppression, manifested by anemia, leukopenia or thrombocytopenia, has been reported in patients receiving allopurinol tablets. The cytopenias have occurred as early as 6 weeks up to 6 years after the initiation of therapy of allopurinol tablets. Concomitant use of allopurinol tablets with cytotoxic drugs associated with myelosuppression may increase the risk of myelosuppression. Monitor blood counts more frequently when cytotoxic drugs are used concomitantly [see *Drug Interactions* ( 7.2)] .

Concomitant use with allopurinol increases the exposure of either mercaptopurine or azathioprine which may increase the risk of myelosuppression. Reduce the dosage of mercaptopurine or azathioprine as recommended in their respective prescribing information when used concomitantly with allopurinol tablets [see *Drug Interactions* ( 7.2)] .

#### **5.6 Potential Effect on Driving and Use of Machinery**

Drowsiness, somnolence and dizziness have been reported in patients taking allopurinol tablets [see *Adverse Reactions* ( 6)] . Inform patients also that the central nervous system depressant effects of allopurinol tablets may be additive to those of alcohol and other CNS depressants.

Advise patients to avoid operation of automobiles or other dangerous machinery and activities made hazardous by decreased alertness when starting allopurinol tablets or increasing the dose, until they know how the drug affects them.

### **6 ADVERSE REACTIONS**

The following clinically significant adverse reactions are described elsewhere in the labeling:

- Skin Rash and Hypersensitivity [see *Warnings and Precautions* ( 5.1)]
- Nephrotoxicity [see *Warnings and Precautions* ( 5.3)]
- Hepatotoxicity [see *Warnings and Precautions* ( 5.4)]
- Myelosuppression [see *Warnings and Precautions* ( 5.5)]
- Potential Effect on Driving and Use of Machinery [see *Warnings and Precautions* ( 5.6)]

The following adverse reactions associated with the use of allopurinol tablets were identified in literature, unpublished clinical trials or postmarketing reports. Because some of these reactions were reported voluntarily from a population of uncertain size, it is not always possible to reliably estimate their frequency or establish a causal relationship to drug exposure. The most frequent adverse reaction to allopurinol tablets

is skin rash.

Most Common Adverse Reactions (≥ 1%)

*Gastrointestinal:* Diarrhea, nausea, alkaline phosphatase increase, AST/ALT increase.

*Metabolic and Nutritional:* Acute attacks of gout.

*Skin and Appendages:* Rash, maculopapular rash.

Less Common Adverse Reactions (< 1%)

*Body As a Whole:* Ecchymosis, fever, headache, malaise.

*Cardiovascular:* Necrotizing angitis, vasculitis, pericarditis, peripheral vascular disease, thrombophlebitis, bradycardia, vasodilation.

*Gastrointestinal:* Hepatic necrosis, granulomatous hepatitis, hepatomegaly, hyperbilirubinemia, cholestatic jaundice, vomiting, intermittent abdominal pain, gastritis, dyspepsia, hemorrhagic pancreatitis, gastrointestinal bleeding, stomatitis, salivary gland swelling, hyperlipidemia, tongue edema, anorexia.

*Hemic and Lymphatic:* Thrombocytopenia, eosinophilia, leukocytosis, leukopenia, aplastic anemia, agranulocytosis, eosinophilic fibrohistiocytic lesion of bone marrow, pancytopenia, prothrombin decrease, anemia, hemolytic anemia, reticulocytosis, lymphadenopathy, lymphocytosis.

*Musculoskeletal:* Myopathy, arthralgias, myalgia.

*Nervous:* Peripheral neuropathy, neuritis, paresthesia, somnolence, optic neuritis, confusion, dizziness, vertigo, foot drop, decrease in libido, depression, amnesia, tinnitus, asthenia, insomnia.

*Respiratory:* Epistaxis, bronchospasm, asthma, pharyngitis, rhinitis.

*Skin and Appendages:* Erythema multiforme exudativum (Stevens-Johnson syndrome), toxic epidermal necrolysis (Lyell's syndrome), hypersensitivity vasculitis, purpura, vesicular bullous dermatitis, exfoliative dermatitis, eczematoïd dermatitis, pruritus, urticaria, alopecia, onycholysis, lichen planus, furunculosis, facial edema, sweating, skin edema.

*Special Senses:* Taste loss/perversion, cataracts, macular retinitis, iritis, conjunctivitis, amblyopia.

*Urogenital:* Renal failure, uremia, nephritis, impotence, primary hematuria, albuminuria.

*Endocrine:* Infertility (male), hypercalcemia, gynecomastia (male).

## 7 DRUG INTERACTIONS

### 7.1 Drugs Known to Affect the Occurrence of Skin Rash and Hypersensitivity

Concomitant use of the following drugs may increase the risk of skin rash, which may be severe: bendamustine, thiazide diuretics, ampicillin and amoxicillin. Renal impairment may further increase risk with concomitant use of thiazide diuretics [see *Warnings and Precautions* ( 5.1, 5.2) and *Clinical Pharmacology* ( 12.2)] .

Monitor kidney function and reduce the dose of allopurinol tablets in patients with concomitant thiazide diuretic use and impaired renal function [see *Dosage and Administration* ( 2.6), *Warnings and Precautions* ( 5.1)].

Discontinue allopurinol tablets at the first appearance of skin rash or other signs which may indicate a hypersensitivity reaction when use concomitantly with these drugs [see *Warnings and Precautions* ( 5.1)] .

### 7.2 Drugs Known to Have Clinically Important Drug Interactions with Allopurinol Tablets

**Table 3: Interventions for Clinically Important Drug Interactions with Allopurinol Tablets**

<b>Capecitabine</b>	
<i>Clinical Impact</i>	Concomitant use with allopurinol may decrease concentration of capecitabine's active metabolites, which may decrease capecitabine

	efficacy.
<i>Intervention</i>	Avoid the use of allopurinol tablets during treatment with capecitabine
<b>Chlorpropamide</b>	
<i>Clinical Impact</i>	Allopurinol tablets prolongs the half-life of chlorpropamide as both compete for renal tubular excretion. In patients with renal insufficiency, the risk of hypoglycemia may be increased due to this mechanism.
<i>Intervention</i>	Monitor patients with renal insufficiency for hypoglycemia when administering chlorpropamide and allopurinol tablets concomitantly.
<b>Cyclosporine</b>	
<i>Clinical Impact</i>	Concomitant use of allopurinol increases cyclosporine concentrations, which may increase the risk of adverse reactions.
<i>Intervention</i>	Increase frequency of monitoring cyclosporine concentrations as reflected in its prescribing information and modify the dosage of cyclosporine as appropriate when used concomitantly with allopurinol tablets.
<b>Cyclophosphamide and Other Cytotoxic Agents</b>	
<i>Clinical Impact</i>	Concomitant use of allopurinol with cyclophosphamide and other cytotoxic agents (doxorubicin, bleomycin, procarbazine, mechloroethamine) increases bone marrow suppression among patients with neoplastic disease, except leukemia.
<i>Intervention</i>	Blood count monitoring and regular physician follow-up are recommended.
<b>Dicumarol</b>	
<i>Clinical Impact</i>	Allopurinol tablets prolongs the half-life of the anticoagulant, dicumarol. The mechanism of this drug interaction has not been established but should be noted when allopurinol tablets are given to patients already on dicumarol therapy.
<i>Intervention</i>	Monitor prothrombin time. Adjust the dosage of dicumarol accordingly when allopurinol tablets are added to anticoagulant therapy.
<b>Fluorouracil</b>	
<i>Clinical Impact</i>	Based on non-clinical data, allopurinol may decrease anti-tumor activity due to suppression of phosphorylation of 5-fluorouracil.
<i>Intervention</i>	Concomitant administration with fluorouracil should be avoided.
<b>Mercaptopurine or Azathioprine</b>	
<i>Clinical Impact</i>	Allopurinol inhibits xanthine oxidase mediated metabolism of mercaptopurine and azathioprine. Concomitant use of allopurinol increases the exposure of either mercaptopurine or azathioprine which may increase the risk of their adverse reactions, including myelosuppression [see <i>Warnings and Precautions 5.5</i> ].
<i>Intervention</i>	In patients receiving mercaptopurine or azathioprine, the concomitant administration of 300 mg to 600 mg of allopurinol tablets per day will require a reduction in dose to approximately one third to one fourth of the usual dose of mercaptopurine or azathioprine. Subsequent adjustment of doses of mercaptopurine or azathioprine should be made on the basis of therapeutic response and the appearance of toxic effects.
<b>Pegloticase</b>	
<i>Clinical Impact</i>	Concomitant use of allopurinol tablets and pegloticase may potentially blunt the rise of serum uric acid levels and increase the risk of pegloticase related anaphylaxis in patients whose uric acid level increase to above 6 mg/dL.
<i>Intervention</i>	Discontinue and do not institute allopurinol tablets therapy during treatment with pegloticase.
<b>Theophylline</b>	
<i>Clinical Impact</i>	Concomitant use of allopurinol doses greater than or equal to 600 mg/day may decrease the clearance of theophylline
<i>Intervention</i>	Monitor and adjust theophylline doses as reflected in the prescribing information.
<b>Uricosuric Drugs</b>	
<i>Clinical Impact</i>	Uricosuric agents increase the excretion of the active allopurinol metabolite oxypurinol. Concomitant use with uricosuric agents decreases oxypurinol exposure which may reduce the inhibition of xanthine oxidase by oxypurinol and increases the urinary excretion of uric acid. The net effect of such combined therapy may be useful in some patients in achieving minimum serum uric acid levels provided the total

	urinary uric acid load does not exceed the competence of the patient's kidney function.
<i>Intervention</i>	Monitor uric acid levels due to the increased chance of hypouricemic effects.
<b>Warfarin</b>	
<i>Clinical Impact</i>	Allopurinol may inhibit the metabolism of warfarin, possibly enhancing its anticoagulant effect.
<i>Intervention</i>	Monitor patients on concomitant therapy for excessive anticoagulation. Assess INR frequently and adjust warfarin dosage accordingly when allopurinol is added to warfarin therapy.

## 8 USE IN SPECIFIC POPULATIONS

### 8.1 Pregnancy

#### Risk Summary

Based on findings in animals, allopurinol tablets may cause fetal harm when administered to a pregnant woman. Adverse developmental outcomes have been described in exposed animals (see *Data*). Allopurinol and its metabolite oxypurinol have been shown to cross the placenta following administration of maternal allopurinol.

Available limited published data on allopurinol use in pregnant women do not demonstrate a clear pattern or increase in frequency of adverse developmental outcomes. Among approximately 50 pregnancies described in published literature, 2 infants with major congenital malformations have been reported with following maternal allopurinol exposure. Advise pregnant women of the potential risk to a fetus.

All pregnancies have a background risk of birth defect, loss, or other adverse outcomes. The background risk of major birth defects and miscarriage for the indicated population is unknown.

In the U.S. general population, the estimated background risk of major birth defects and miscarriage in clinically recognized pregnancies is 2% to 4% and 15% to 20%, respectively.

#### Data

##### *Human Data*

Experience with allopurinol tablets during human pregnancy has been limited partly because women of reproductive age rarely require treatment with allopurinol tablets. A case report published in 2011 described the outcome of a full-term pregnancy in a 35-year-old woman who had recurrent kidney stones since age 18 who took allopurinol throughout the pregnancy. The child had multiple complex birth defects and died at 8 days of life. A second report in 2013 provided data on 31 prospectively ascertained pregnancies involving mothers exposed to allopurinol for varying durations during the first trimester. The overall rate of major fetal malformations and spontaneous abortions was reported to be within the normal expected range; however, one child had severe malformations similar to those described in the cited earlier case report.

##### *Animal Data*

There was no evidence of fetotoxicity or teratogenicity in rats or rabbits treated during the period of organogenesis with oral allopurinol at doses up to 200 mg/kg/day and up to 100 mg/kg/day, respectively (about 2.4 times the human dose on a mg/m<sup>2</sup> basis). However, there is a published report in pregnant mice that single intraperitoneal doses of 50 mg/kg or 100 mg/kg (about 0.3 or 0.6 times the human dose on a mg/m<sup>2</sup> basis) of allopurinol on gestation days 10 or 13 produced significant increases in fetal deaths and teratogenic effects (cleft palate, harelip, and digital defects). It is uncertain whether these findings represented a fetal effect or an effect secondary to maternal toxicity.

### 8.2 Lactation

#### Risk Summary

Allopurinol and oxypurinol are present in human milk. Based on information from a single case report, allopurinol and its active metabolite, oxypurinol, were detected in the milk of

a mother receiving 300 mg of allopurinol daily at 5 weeks postpartum. The estimated relative infant dose were 0.14 mg/kg and 0.2 mg/kg of allopurinol and between 7.2 mg/kg to 8 mg/kg of oxypurinol daily. There was no report of effects of allopurinol on the breastfed infant or on milk production. Because of the potential for serious adverse reactions in a breastfed child, advise women not to breastfeed during treatments with allopurinol tablets and for one week after the last dose.

## 8.4 Pediatric Use

### Hyperuricemia Associated with Cancer Therapy

The safety and effectiveness of allopurinol for the management of pediatric patients with leukemia, lymphoma and solid tumor malignancies who are receiving cancer therapy which causes elevations of serum and urinary uric acid levels have been established in approximately 200 pediatric patients. The efficacy and safety profile observed in this patient population were similar to that observed in adults.

### Primary or Secondary Gout

The safety and effectiveness of allopurinol tablets have not been established for the treatment of signs and symptoms of primary or secondary gout in pediatric patients.

### Recurrent Calcium Oxalate Calculi

The safety and effectiveness of allopurinol tablets have not been established for the management of pediatric patients with recurrent calcium oxalate calculi.

### Inborn Errors of Metabolism

The safety and effectiveness of allopurinol tablets have not been established in pediatric patients with rare inborn errors of purine metabolism.

## 8.6 Renal Impairment

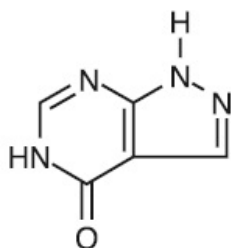
Allopurinol tablets and its primary active metabolite, oxipurinol, are eliminated by the kidneys; therefore, changes in renal function have a profound effect on exposure. In patients with decreased renal function or who have concurrent illnesses which can affect renal function, perform periodic laboratory parameters of renal function and reassess the patient's dosage of allopurinol tablets [see *Dosage and Administration* ( 2.6), *Warnings and Precautions* ( 5.3)] .

## 10 OVERDOSAGE

In the management of overdosage there is no specific antidote for allopurinol tablets. Both allopurinol tablets and oxipurinol are dialyzable; however, the usefulness of hemodialysis or peritoneal dialysis in the management of an overdose of allopurinol tablets are unknown.

## 11 DESCRIPTION

Allopurinol is a xanthine oxidase inhibitor. It has the following structural formula:



Allopurinol is known chemically as 1, 5-dihydro-4 H-pyrazolo [3, 4- d]pyrimidin-4-one and it has a molecular weight of 136.11 g/mol. Its solubility in water at 37°C is 80.0 mg/dL and is greater in an alkaline solution. It is a xanthine oxidase inhibitor which is administered orally.

Each scored white, flat cylindrical tablet contains 100 mg allopurinol and the inactive ingredients corn starch, lactose monohydrate, magnesium stearate and povidone.

Each scored white round tablet contains 200 mg allopurinol and the inactive ingredients corn starch, lactose monohydrate, magnesium stearate and povidone.

Each scored peach, flat cylindrical tablet contains 300 mg allopurinol and the inactive ingredients corn starch, FD&C Yellow No. 6 Aluminium Lake, lactose monohydrate, magnesium stearate and povidone.

## **12 CLINICAL PHARMACOLOGY**

### **12.1 Mechanism of Action**

Allopurinol is a structural analogue of the natural purine base, hypoxanthine.

Allopurinol acts on purine catabolism, without disrupting the biosynthesis of purines. It reduces the production of uric acid by inhibiting the biochemical reactions immediately preceding its formation. It is an inhibitor of xanthine oxidase, the enzyme responsible for the conversion of hypoxanthine to xanthine and of xanthine to uric acid, the end product of purine metabolism in humans. Allopurinol is metabolized to the corresponding xanthine analogue, oxypurinol (alloxanthine), which also is an inhibitor of xanthine oxidase.

### **12.2 Pharmacodynamics**

Allopurinol tablets reduces the production of uric acid by inhibiting the biochemical reactions immediately preceding its formation in a dose dependent manner. The pharmacological action of allopurinol is generally believed to be mediated by its oxypurinol metabolite.

#### Effect on Hypoxanthine and Xanthine

Reutilization of both hypoxanthine and xanthine for nucleotide and nucleic acid synthesis is markedly enhanced when their oxidations are inhibited by allopurinol tablets and oxypurinol. This reutilization does not disrupt normal nucleic acid anabolism, however, because feedback inhibition is an integral part of purine biosynthesis. As a result of xanthine oxidase inhibition, the serum concentration of hypoxanthine plus xanthine in patients receiving allopurinol tablets for treatment of hyperuricemia is usually in the range of 0.3 mg/dL to 0.4 mg/dL compared to a normal level of approximately 0.15 mg/dL. A maximum of 0.9 mg/dL of these oxypurines has been reported when the serum urate was lowered to less than 2 mg/dL by high doses of allopurinol tablets. These values are far below the saturation levels at which point their precipitation would be expected to occur (above 7 mg/dL). The increased xanthine and hypoxanthine in the urine in patients who were treated with oral allopurinol have not been accompanied by problems of nephrolithiasis; however, there are isolated case reports of xanthine crystalluria.

#### Drug Interaction Studies

*Fluorouracil:* Based on non-clinical data, allopurinol may decrease anti-tumor activity due to suppression of phosphorylation of 5-fluorouracil.

*Pegloticase:* Concomitant use of allopurinol tablets and pegloticase may potentially blunt

the rise of serum uric acid levels required for monitoring the safe use of pegloticase.

*Cytotoxic Agents:* Enhanced bone marrow suppression by cyclophosphamide and other cytotoxic agents has been reported among patients with neoplastic disease, except leukemia, in the presence of allopurinol tablets.

*Thiazide Diuretics:* Reports that the concomitant administration of allopurinol and thiazide diuretics contributed to increased allopurinol toxicity were reviewed; however, a causal mechanism or cause-and-effect relationship was not found.

### **12.3 Pharmacokinetics**

#### Absorption

Allopurinol tablets are approximately 90% absorbed from the gastrointestinal tract. Peak plasma levels generally occur at 1.5 hours and 4.5 hours for allopurinol tablets and oxipurinol respectively. After a single oral dose of 300 mg allopurinol tablets, maximum plasma levels of about 3 mcg/mL of allopurinol tablets and 6.5 mcg/mL of oxipurinol are produced.

#### Elimination

The half-life of allopurinol and oxipurinol are approximately 1 hour to 2 hours and 15 hours following oral dose of allopurinol tablets, respectively.

#### *Metabolism*

Allopurinol is metabolized to the corresponding xanthine analogue, oxypurinol (alloxanthine), which also is an inhibitor of xanthine oxidase.

#### *Excretion*

Allopurinol tablets and its primary active metabolite, oxipurinol, are eliminated by the kidneys. Approximately 20% of the ingested allopurinol is excreted in the feces. Oxipurinol is primarily eliminated unchanged in urine by glomerular filtration and tubular reabsorption.

#### Drug Interaction Studies

*Capecitabine:* Concomitant use with allopurinol may decrease concentration of capecitabine's active metabolites, which may decrease capecitabine efficacy.

*Cyclosporine:* Concomitant use of allopurinol increases cyclosporine concentrations which may increase the risk of adverse reactions.

*Mercaptopurine or Azathioprine:* Allopurinol inhibits xanthine oxidase mediated metabolism of mercaptopurine and azathioprine. Concomitant use of allopurinol increases the exposure of either mercaptopurine or azathioprine which may increase the risk of their adverse reactions including myelosuppression.

*Theophylline:* Concomitant use of allopurinol doses greater than or equal to 600 mg/day may decrease the clearance of theophylline.

*Uricosuric Agents:* Uricosuric agents increase the excretion of the active allopurinol metabolite oxypurinol. Concomitant use with uricosuric agents decreases oxypurinol exposure which may reduce the inhibition of xanthine oxidase by oxypurinol and increases the urinary excretion of uric acid.

*Warfarin:* Allopurinol may inhibit the metabolism of warfarin, possibly enhancing its anticoagulant effect.

### **12.5 Pharmacogenomics**

#### HLA-B\*5801 allele

The HLA-B\*5801 allele is a genetic marker that has shown to be associated with risk of developing allopurinol tablets related hypersensitivity syndrome (DRESS) and SJS/TEN. The frequency of the HLA-B\*58:01 allele ranges from 8 to 10% in Han Chinese populations, about 8% in Thai populations, and about 6% in Korean populations based upon published literature and available databases. The frequency of the HLA-B\*58:01 allele is about 4% in Blacks, about 1 % to 2 % in indigenous peoples of the Americas and

Hispanic populations, and < 1% in people from European descent and Japanese.

Stevens-Johnson syndrome (SJS)/Toxic epidermal necrolysis (TEN) can still occur in patients who are found to be negative for HLA-B\*5801 irrespective of ethnic origin.

## **13 NONCLINICAL TOXICOLOGY**

### **13.1 Carcinogenesis, Mutagenesis, Impairment of Fertility**

No evidence of tumorigenicity was observed in male or female mice or rats that received oral allopurinol for the majority of their life spans (greater than 88 weeks) at doses up to 20 mg/kg/day (0.1 and 0.2 times the MRHD on a mg/m<sup>2</sup> basis in mice and rats, respectively).

Allopurinol tested negative in the following genotoxicity assays: the in vitro Ames assay, in vitro mouse lymphoma assay, and in vivo rat bone marrow micronucleus assay. Allopurinol administered intravenously to rats (50 mg/kg) was not incorporated into rapidly replicating intestinal DNA. No evidence of clastogenicity was observed in lymphocytes taken from patients treated with allopurinol (mean duration of treatment 40 months), or in an in vitro assay with human lymphocytes.

Allopurinol oral doses of 20 mg/kg/day had no effect on male or female fertility in rats or rabbits (approximately 0.2 or 0.5 times the MRHD on a mg/m<sup>2</sup> basis, respectively).

## **16 HOW SUPPLIED/STORAGE AND HANDLING**

### How Supplied

Allopurinol 300mg Tablets are a peach, scored, flat cylindrical tablet with "I" and '136' on either side of the break line on one side and plain on other side.

Available in the following package sizes:

NDC 60760-722-90 BOTTLES OF 90

Dispense in a tight container as defined in the USP.

## **17 PATIENT COUNSELING INFORMATION**

### Administration

Advise patients to take allopurinol tablets after meals to minimize gastric irritation. If a single dose of allopurinol tablets is occasionally forgotten, there is no need to double the dose at the next scheduled time.

### Skin Rash and Hypersensitivity

Inform patients that allopurinol tablets may increase the risk of serious and sometimes fatal dermatologic reactions. Instruct patients to discontinue allopurinol tablets and to seek medical attention immediately, at the first sign of a skin rash, blisters, fever, painful urination, blood in the urine, irritation of the eyes, swelling of the lips or mouth, or other signs and symptoms of hypersensitivity reactions [see *Warnings and Precautions ( 5.1)*].

### Gout Flares During Treatment With Allopurinol Tablets

Inform patients that gout flares may occur during initiation of treatment with allopurinol tablets, even when their serum uric acid is normal. Concurrent use of additional medications such as colchicine or other anti-inflammatory agents can prevent gout flares. Advise patients to continue treatment with both, allopurinol tablets and the prophylactic therapy as prescribed, even if gout flares occur. Reassure them that it may take months to achieve control of the flares but the flares typically become shorter and less severe after several months of therapy [see *Warnings and Precautions ( 5.2)*].

### Nephrotoxicity

Inform patients that allopurinol tablets may affect kidney function. Advise them to increase fluid intake during therapy (i.e., for adults, at least 2 liters of liquids per day) and to stay well hydrated to prevent kidney stones [see *Warnings and Precautions* ( 5.3)] .

### Hepatotoxicity

Inform patients of the risk of hepatotoxicity and to report to their healthcare provider any signs and symptoms of liver failure, including jaundice, pruritus, bleeding, bruising, or anorexia [see *Warnings and Precautions* ( 5.4)] .

### Myelosuppression

Advise patients of the risk of myelosuppression and to report any signs and symptoms of infection, fever, bleeding, shortness of breath, or significant fatigue to their healthcare provider [see *Warnings and Precautions* ( 5.5)] .

### Potential Effect on Driving and Use of Machinery

Inform patients that drowsiness, somnolence and dizziness have been reported in patients taking allopurinol tablets. Inform also that the central nervous system depressant effects of allopurinol tablets may be additive to those of alcohol and other CNS depressants. Advise patients to avoid operation of automobiles or other dangerous machinery and activities made hazardous by decreased alertness when starting allopurinol tablets or increasing the dose, until they know how the drug affects them [see *Warnings and Precautions* ( 5.6)] .

### Risks Associated with Use of Concomitant Medications

Inform patients that there are risks of adverse effects when allopurinol tablets are used with the following drugs: dicumarol, warfarin, sulfapyrazone, mercaptopurine, azathioprine, ampicillin, amoxicillin, pegloticase, theophylline, and thiazide diuretics. Advise patients to disclose all medications in use and they should follow the instructions of their physician [see *Drug Interactions* ( 7.2)] .

-

### Pregnancy

Advise pregnant women of the potential risk to a fetus. Advise women to notify their healthcare provider if they become pregnant or intend to become pregnant during treatment with allopurinol tablets [see *Use in Specific Populations* ( 8.1)] .

-

### Lactation

Advise women not to breastfeed during treatment with allopurinol tablets and for one week after the last dose [see *Use in Specific Populations* ( 8.2)] .

Manufactured for:

**Florida Pharmaceutical Products, LLC**

Boca Raton, FL 33487

Toll-free # 1-833-856-0880

**Revised: February 2026**


**PACKAGE LABEL.PRINCIPAL DISPLAY PANEL**

NDC60760-722-90 <b>Allopurinol</b> Tablets, USP <b>300mg</b> QTY: 90 LOT# ??????? EXP ??-?? RX# 000000000 MANUFACTURED BY: Indoco Remedies Ltd. Goa, 403722, India.	<b>Allopurinol</b> Tablets, USP 300mg QTY: 90 RX# 000000000 NDC 60760-722-90 LOT# ??????? EXP ??-??	<b>Allopurinol</b> Tablets, USP 300mg QTY: 90 RX# 000000000 NDC 60760-722-90 LOT# ??????? EXP ??-??	<b>Allopurinol</b> Tablets, USP 300mg QTY: 90 RX# 000000000 NDC 60760-722-90 LOT# ??????? EXP ??-??	<b>Allopurinol</b> Tablets, USP 300mg QTY: 90 RX# 000000000 NDC 60760-722-90 LOT# ??????? EXP ??-??
---	--	--	--	--

(01) 00360760722902  
 (21) 000000000  
 (17) ???????  
 (10) ???????

**USE AS DIRECTED**

Rx Only. Store at 20° - 25° C (68° - 77° F) See Package Insert for details.



## ALLOPURINOL

allopurinol tablet

### Product Information

<b>Product Type</b>	HUMAN PRESCRIPTION DRUG	<b>Item Code (Source)</b>	NDC:60760-722(NDC:71921-242)
<b>Route of Administration</b>	ORAL		

### Active Ingredient/Active Moiety

Ingredient Name	Basis of Strength	Strength
ALLOPURINOL (UNII: 63CZ7GJN51) (ALLOPURINOL - UNII:63CZ7GJN51)	ALLOPURINOL	300 mg

### Inactive Ingredients

Ingredient Name	Strength
LACTOSE MONOHYDRATE (UNII: EWQ57Q8I5X)	
STARCH, CORN (UNII: O8232NY35J)	
POVIDONE K30 (UNII: U725QWY32X)	
MAGNESIUM STEARATE (UNII: 70097M6I30)	
FD&C YELLOW NO. 6 (UNII: H77VEI93A8)	

### Product Characteristics

<b>Color</b>	pink (Peach)	<b>Score</b>	2 pieces
<b>Shape</b>	CAPSULE (Flat Cylindrical)	<b>Size</b>	11mm
<b>Flavor</b>		<b>Imprint Code</b>	I;136
<b>Contains</b>			

### Packaging

#	Item Code	Package Description	Marketing Start Date	Marketing End Date
1	NDC:60760-722-90	90 in 1 BOTTLE, PLASTIC; Type 0: Not a Combination Product	04/10/2026	

### Marketing Information

Marketing Category	Application Number or Monograph Citation	Marketing Start Date	Marketing End Date
ANDA	ANDA204467	10/31/2023	

**Labeler** - ST. MARY'S MEDICAL PARK PHARMACY (063050751)

## Establishment

Name	Address	ID/FEI	Business Operations
ST. MARY'S MEDICAL PARK PHARMACY		063050751	repack(60760-722) , relabel(60760-722)

Revised: 4/2026

ST. MARY'S MEDICAL PARK PHARMACY