

**ETOPOSIDE- etoposide injection, solution, concentrate**  
**Meitheal Pharmaceuticals Inc.**

-----  
**Etoposide Injection, USP**  
**For Intravenous Use Only**  
**meitheal®**  
**Rx only**

**WARNINGS**

Etoposide injection should be administered under the supervision of a qualified physician experienced in the use of cancer chemotherapeutic agents. Severe myelosuppression with resulting infection or bleeding may occur.

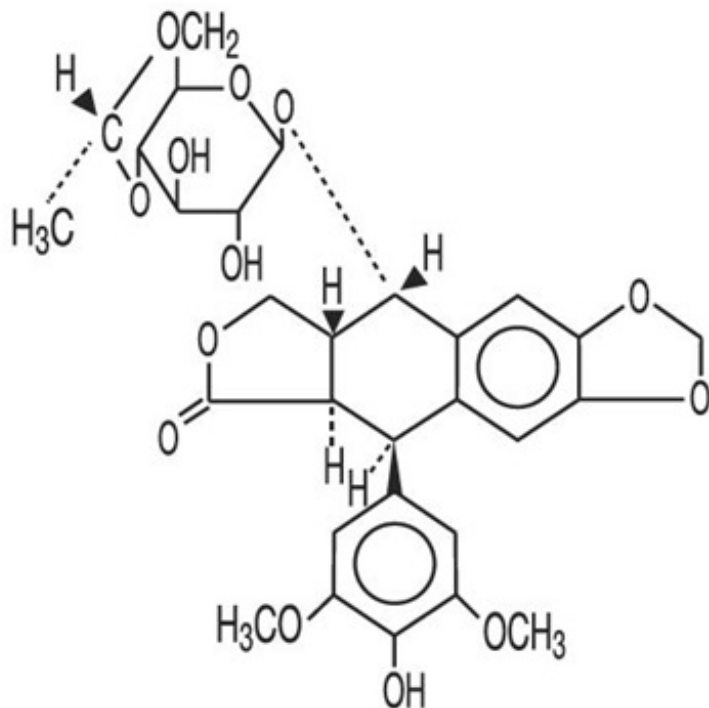
**DESCRIPTION**

Etoposide Injection, USP (also commonly known as VP-16) is a semisynthetic derivative of podophyllotoxin used in the treatment of certain neoplastic diseases. It is 4'-demethylepipodophyllotoxin 9-[4,6-O-(R)-ethylidene- $\beta$ -D-glucopyranoside]. It is very soluble in methanol and chloroform, slightly soluble in ethanol, and sparingly soluble in water and ether. It is made more miscible with water by means of organic solvents.

Etoposide Injection, USP is available for intravenous use as a sterile 20 mg per mL solution in 100 mg (5 mL), 500 mg (25 mL), or 1 g (50 mL) sterile, multiple dose vials. The pH of the clear, colorless to yellow solution is 3.0 to 4.0.

Each mL contains: 20 mg etoposide, USP, 2 mg citric acid anhydrous, 80 mg polysorbate 80, 650 mg polyethylene glycol 300 (57.5% v/v and 65.0% w/v), and 262 mg dehydrated alcohol (33.2% v/v and 26.2% w/v).

The structural formula is:



$C_{29}H_{32}O_{13}$

M.W. 588.56

## CLINICAL PHARMACOLOGY

Etoposide Injection has been shown to cause metaphase arrest in chick fibroblasts. Its main effect, however, appears to be at the  $G_2$  portion of the cell cycle in mammalian cells. Two different dose-dependent responses are seen. At high concentrations (10 mcg/mL or more), lysis of cells entering mitosis is observed. At low concentrations (0.3 to 10 mcg/mL), cells are inhibited from entering prophase. It does not interfere with microtubular assembly. The predominant macromolecular effect of etoposide appears to be the induction of DNA strand breaks by an interaction with DNA topoisomerase II or the formation of free radicals.

## Pharmacokinetics

On intravenous administration, the disposition of etoposide is best described as a biphasic process with a distribution half-life of about 1.5 hours and terminal elimination half-life ranging from 4 to 11 hours. Total body clearance values range from 33 to 48 mL/min or 16 to 36 mL/min/m<sup>2</sup> and, like the terminal elimination half-life, are independent of dose over a range 100 to 600 mg/m<sup>2</sup>. Over the same dose range, the areas under the plasma concentration vs time curves (AUC) and the maximum plasma concentration ( $C_{max}$ ) values increase linearly with dose. Etoposide does not accumulate in the plasma following daily administration of 100 mg/m<sup>2</sup> for 4 to 5 days.

The mean volumes of distribution at steady state fall in the range of 18 to 29 liters or 7 to 17 L/m<sup>2</sup>. Etoposide enters the CSF poorly. Although it is detectable in CSF and intracerebral tumors, the concentrations are lower than in extracerebral tumors and in plasma. Etoposide concentrations are higher in normal lung than in lung metastases and are similar in primary tumors and normal tissues of the myometrium. *In vitro*, etoposide

is highly protein bound (97%) to human plasma proteins. An inverse relationship between plasma albumin levels and etoposide renal clearance is found in children. In a study determining the effect of other therapeutic agents on the *in vitro* binding of carbon-14 labeled etoposide to human serum proteins, only phenylbutazone, sodium salicylate, and aspirin displaced protein-bound etoposide at concentrations achieved *in vivo*.

Etoposide binding ratio correlates directly with serum albumin in patients with cancer and in normal volunteers. The unbound fraction of etoposide significantly correlated with bilirubin in a population of cancer patients. Data have suggested a significant inverse correlation between serum albumin concentration and free fraction of etoposide (see **PRECAUTIONS** section).

After intravenous administration of  $^{14}\text{C}$ -etoposide (100 to 124 mg/m<sup>2</sup>), mean recovery of radioactivity in the urine was 56% of the dose at 120 hours, 45% of which was excreted as etoposide; fecal recovery of radioactivity was 44% of the dose at 120 hours.

In children, approximately 55% of the dose is excreted in the urine as etoposide in 24 hours. The mean renal clearance of etoposide is 7 to 10 mL/min/m<sup>2</sup> or about 35% of the total body clearance over a dose range of 80 to 600 mg/m<sup>2</sup>. Etoposide, therefore, is cleared by both renal and nonrenal processes, i.e., metabolism and biliary excretion. The effect of renal disease on plasma etoposide clearance is not known.

Biliary excretion of unchanged drug and/or metabolites is an important route of etoposide elimination as fecal recovery of radioactivity is 44% of the intravenous dose. The hydroxy acid metabolite [4'-demethylepipodophyllic acid-9-(4,6-O-(R)-ethylidene- $\beta$ -D-glucopyranoside)], formed by opening of the lactone ring, is found in the urine of adults and children. It is also present in human plasma, presumably as the *trans* isomer. Glucuronide and/or sulfate conjugates of etoposide are also excreted in human urine. Only 8% or less of an intravenous dose is excreted in the urine as radiolabeled metabolites of  $^{14}\text{C}$ -etoposide. In addition, O-demethylation of the dimethoxyphenol ring occurs through the CYP450 3A4 isoenzyme pathway to produce the corresponding catechol.

After either intravenous infusion or oral capsule administration, the C<sub>max</sub> and AUC values exhibit marked intra- and inter-subject variability.

In adults, the total body clearance of etoposide is correlated with creatinine clearance, serum albumin concentration, and nonrenal clearance. Patients with impaired renal function receiving etoposide have exhibited reduced total body clearance, increased AUC and a lower volume of distribution at steady state (see **PRECAUTIONS** section). Use of cisplatin therapy is associated with reduced total body clearance. In children, elevated serum SGPT levels are associated with reduced drug total body clearance. Prior use of cisplatin may also result in a decrease of etoposide total body clearance in children.

Although some minor differences in pharmacokinetic parameters between age and gender have been observed, these differences were not considered clinically significant.

## **INDICATIONS AND USAGE**

Etoposide Injection is indicated in the management of the following neoplasms:

## Refractory Testicular Tumors

Etoposide Injection in combination therapy with other approved chemotherapeutic agents in patients with refractory testicular tumors who have already received appropriate surgical, chemotherapeutic, and radiotherapeutic therapy.

## Small Cell Lung Cancer

Etoposide Injection and/or capsules in combination with other approved chemotherapeutic agents as first line treatment in patients with small cell lung cancer.

## CONTRAINDICATIONS

Etoposide injection is contraindicated in patients who have demonstrated a previous hypersensitivity to etoposide or any component of the formulation.

## WARNINGS

Patients being treated with etoposide injection must be frequently observed for myelosuppression both during and after therapy. Myelosuppression resulting in death has been reported. Dose-limiting bone marrow suppression is the most significant toxicity associated with etoposide injection therapy. Therefore, the following studies should be obtained at the start of therapy and prior to each subsequent cycle of etoposide injection: platelet count, hemoglobin, white blood cell count, and differential. The occurrence of a platelet count below  $50,000/\text{mm}^3$  or an absolute neutrophil count below  $500/\text{mm}^3$  is an indication to withhold further therapy until the blood counts have sufficiently recovered.

Physicians should be aware of the possible occurrence of an anaphylactic reaction manifested by chills, fever, tachycardia, bronchospasm, dyspnea, and hypotension. Higher rates of anaphylactic-like reactions have been reported in children who received infusions at concentrations higher than those recommended. The role that concentration of infusion (or rate of infusion) plays in the development of anaphylactic-like reactions is uncertain (see **ADVERSE REACTIONS** section). Treatment is symptomatic. The infusion should be terminated immediately, followed by the administration of pressor agents, corticosteroids, antihistamines, or volume expanders at the discretion of the physician.

For parenteral administration, etoposide injection should be given only by slow intravenous infusion (usually over a 30- to 60-minute period) since hypotension has been reported as a possible side effect of rapid intravenous injection.

## Pregnancy

Etoposide Injection can cause fetal harm when administered to a pregnant woman. Etoposide has been shown to be teratogenic in mice and rats.

In rats, an intravenous etoposide dose of 0.4 mg/kg/day (about 1/20<sup>th</sup> of the human dose on a mg/m<sup>2</sup> basis) during organogenesis caused maternal toxicity, embryotoxicity, and teratogenicity (skeletal abnormalities, exencephaly, encephalocele, and anophthalmia); higher doses of 1.2 and 3.6 mg/kg/day (about 1/7<sup>th</sup> and 1/2 of human dose on a mg/m<sup>2</sup> basis) resulted in 90 and 100% embryonic resorptions. In mice, a

single 1 mg/kg (1/16<sup>th</sup> of human dose on a mg/m<sup>2</sup> basis) dose of etoposide administered intraperitoneally on days 6, 7, or 8 of gestation caused embryotoxicity, cranial abnormalities, and major skeletal malformations. An I.P. dose of 1.5 mg/kg (about 1/10<sup>th</sup> of human dose on a mg/m<sup>2</sup> basis) on day 7 of gestation caused an increase in the incidence of intrauterine death and fetal malformations and a significant decrease in the average fetal body weight.

Women of childbearing potential should be advised to avoid becoming pregnant. If this drug is used during pregnancy, or if the patient becomes pregnant while receiving this drug, the patient should be warned of the potential hazard to the fetus.

Etoposide injection should be considered a potential carcinogen in humans. The occurrence of acute leukemia with or without a preleukemic phase has been reported in rare instances in patients treated with etoposide alone or in association with other neoplastic agents. The risk of development of a preleukemic or leukemic syndrome is unclear. Carcinogenicity tests with etoposide injection have not been conducted in laboratory animals.

## **PRECAUTIONS**

### **General**

In all instances where the use of etoposide injection is considered for chemotherapy, the physician must evaluate the need and usefulness of the drug against the risk of adverse reactions. Most such adverse reactions are reversible if detected early. If severe reactions occur, the drug should be reduced in dosage or discontinued and appropriate corrective measures should be taken according to the clinical judgment of the physician. Reinstitution of etoposide injection therapy should be carried out with caution, and with adequate consideration of the further need for the drug and alertness as to possible recurrence of toxicity.

Patients with low serum albumin may be at an increased risk for etoposide associated toxicities.

### **Drug Interactions**

High-dose cyclosporin A resulting in concentrations above 2000 ng/mL administered with oral etoposide has led to an 80% increase in etoposide exposure with a 38% decrease in total body clearance of etoposide compared to etoposide alone.

### **Laboratory Tests**

Periodic complete blood counts should be done during the course of etoposide injection treatment. They should be performed prior to each cycle of therapy and at appropriate intervals during and after therapy. At least one determination should be done prior to each dose of etoposide injection.

### **Renal Impairment**

In patients with impaired renal function, the following initial dose modification should be considered based on measured creatinine clearance:

---

Measured Creatinine Clearance	>50 mL/min	15 to 50 mL/min
etoposide	100% of dose	75% of dose

Subsequent etoposide injection dosing should be based on patient tolerance and clinical effect.

Data are not available in patients with creatinine clearances <15 mL/min and further dose reduction should be considered in these patients.

### **Carcinogenesis, Mutagenesis, Impairment of Fertility (see WARNINGS section)**

Etoposide has been shown to be mutagenic in Ames assay.

Treatment of Swiss-Albino mice with 1.5 mg/kg I.P. of etoposide injection on day 7 of gestation increased the incidence of intrauterine death and fetal malformations as well as significantly decreased the average fetal body weight. Maternal weight gain was not affected.

Irreversible testicular atrophy was present in rats treated with etoposide intravenously for 30 days at 0.5 mg/kg/day (about 1/16<sup>th</sup> of the human dose on a mg/m<sup>2</sup> basis).

### **Pregnancy**

#### *Teratogenic Effects*

Pregnancy "Category D."

(See **WARNINGS** section.)

### **Nursing Mothers**

It is not known whether this drug is excreted in human milk. Because many drugs are excreted in human milk and because of the potential for serious adverse reactions in nursing infants from etoposide injection, a decision should be made whether to discontinue nursing or to discontinue the drug, taking into account the importance of the drug to the mother.

### **Pediatric Use**

Safety and effectiveness in pediatric patients have not been established.

Etoposide injection contains polysorbate 80. In premature infants, a life-threatening syndrome consisting of liver and renal failure, pulmonary deterioration, thrombocytopenia, and ascites has been associated with an injectable vitamin E product containing polysorbate 80. Anaphylactic reactions have been reported in pediatric patients (see **WARNINGS** section).

### **Geriatric Use**

Clinical studies of etoposide injection for the treatment of refractory testicular tumors did not include sufficient numbers of patients aged 65 years and over to determine whether they respond differently from younger patients. Of more than 600 patients in

four clinical studies in the NDA databases who received etoposide injection or etoposide phosphate in combination with other chemotherapeutic agents for the treatment of small cell lung cancer (SCLC), about one third were older than 65 years. When advanced age was determined to be a prognostic factor for response or survival in these studies, comparisons between treatment groups were performed for the elderly subset. In the one study (etoposide in combination with cyclophosphamide and vincristine compared with cyclophosphamide and vincristine or cyclophosphamide, vincristine, and doxorubicin) where age was a significant prognostic factor for survival, a survival benefit for elderly patients was observed for the etoposide regimen compared with the control regimens. No differences in myelosuppression were seen between elderly and younger patients in these studies except for an increased frequency of WHO Grade III or IV leukopenia among elderly patients in a study of etoposide phosphate or etoposide in combination with cisplatin. Elderly patients in this study also had more anorexia, mucositis, dehydration, somnolence, and elevated BUN levels than younger patients.

In five single-agent studies of etoposide phosphate in patients with a variety of tumor types, 34% of patients were age 65 years or more. WHO Grade III or IV leukopenia, granulocytopenia, and asthenia were more frequent among elderly patients.

Postmarketing experience also suggests that elderly patients may be more sensitive to some of the known adverse effects of etoposide, including myelosuppression, gastrointestinal effects, infectious complications, and alopecia.

Although some minor differences in pharmacokinetic parameters between elderly and nonelderly patients have been observed, these differences were not considered clinically significant.

Etoposide and its metabolites are known to be substantially excreted by the kidney, and the risk of adverse reactions to this drug may be greater in patients with impaired renal function. Because elderly patients are more likely to have decreased renal function, care should be taken in dose selection, and it may be useful to monitor renal function (see **PRECAUTIONS, Renal Impairment** for recommended dosing adjustments in patients with renal impairment).

## **ADVERSE REACTIONS**

The following data on adverse reactions are based on both oral and intravenous administration of etoposide injection as a single agent, using several different dose schedules for treatment of a wide variety of malignancies.

### **Hematologic Toxicity**

Myelosuppression is dose related and dose limiting, with granulocyte nadirs occurring 7 to 14 days after drug administration and platelet nadirs occurring 9 to 16 days after drug administration. Bone marrow recovery is usually complete by day 20, and no cumulative toxicity has been reported. Fever and infection have also been reported in patients with neutropenia. Death associated with myelosuppression has been reported.

The occurrence of acute leukemia with or without a preleukemic phase has been reported rarely in patients treated with etoposide injection in association with other antineoplastic agents (see **WARNINGS** section).

## **Gastrointestinal Toxicity**

Nausea and vomiting are the major gastrointestinal toxicities. The severity of such nausea and vomiting is generally mild to moderate with treatment discontinuation required in 1% of patients. Nausea and vomiting can usually be controlled with standard antiemetic therapy. Mild to severe mucositis/esophagitis may occur. Gastrointestinal toxicities are slightly more frequent after oral administration than after intravenous infusion.

## **Hypotension**

Transient hypotension following rapid intravenous administration has been reported in 1% to 2% of patients. It has not been associated with cardiac toxicity or electrocardiographic changes. No delayed hypotension has been noted. To prevent this rare occurrence, it is recommended that etoposide injection be administered by slow intravenous infusion over a 30- to 60-minute period. If hypotension occurs, it usually responds to cessation of the infusion and administration of fluids or other supportive therapy as appropriate. When restarting the infusion, a slower administration rate should be used.

## **Allergic Reactions**

Anaphylactic-like reactions characterized by chills, fever, tachycardia, bronchospasm, dyspnea, and/or hypotension have been reported to occur in 0.7% to 2% of patients receiving intravenous etoposide injection and in less than 1% of the patients treated with the oral capsules. These reactions have usually responded promptly to the cessation of the infusion and administration of pressor agents, corticosteroids, antihistamines, or volume expanders as appropriate; however, the reactions can be fatal. Hypertension and/or flushing have also been reported. Blood pressure usually normalizes within a few hours after cessation of the infusion. Anaphylactic-like reactions have occurred during the initial infusion of etoposide injection.

Facial/tongue swelling, coughing, diaphoresis, cyanosis, tightness in throat, laryngospasm, back pain, and/or loss of consciousness have sometimes occurred in association with the above reactions. In addition, an apparent hypersensitivity-associated apnea has been reported rarely.

Rash, urticaria, and/or pruritus have infrequently been reported at recommended doses. At investigational doses, a generalized pruritic erythematous maculopapular rash, consistent with perivasculitis, has been reported.

## **Alopecia**

Reversible alopecia, sometimes progressing to total baldness, was observed in up to 66% of patients.

## **Other Toxicities**

The following adverse reactions have been infrequently reported: abdominal pain, aftertaste, constipation, dysphagia, asthenia, fatigue, malaise, somnolence, transient cortical blindness, optic neuritis, interstitial pneumonitis/pulmonary fibrosis, fever, seizure (occasionally associated with allergic reactions), Stevens-Johnson syndrome, and toxic epidermal necrolysis, pigmentation, and a single report of radiation recall



dermatitis.

Hepatic toxicity, generally in patients receiving higher doses of the drug than those recommended, has been reported with etoposide injection. Metabolic acidosis has also been reported in patients receiving higher doses.

Reports of extravasation with swelling have been received postmarketing. Rarely extravasation has been associated with necrosis and venous induration.

The incidences of adverse reactions in the table that follows are derived from multiple data bases from studies in 2,081 patients when etoposide injection was used either orally or by injection as a single agent.

<b>ADVERSE DRUG EFFECT</b>	<b>PERCENT RANGE OF REPORTED INCIDENCE</b>
<b>Hematologic toxicity</b>	
Leukopenia (less than 1,000 WBC/mm <sup>3</sup> )	3 to 17
Leukopenia (less than 4,000 WBC/mm <sup>3</sup> )	60 to 91
Thrombocytopenia (less than 50,000 platelets/mm <sup>3</sup> )	1 to 20
Thrombocytopenia (less than 100,000 platelets/mm <sup>3</sup> )	22 to 41
Anemia	0 to 33
<b>Gastrointestinal toxicity</b>	
Nausea and vomiting	31 to 43
Abdominal pain	0 to 2
Anorexia	10 to 13
Diarrhea	1 to 13
Stomatitis	1 to 6
Hepatic	0 to 3
Alopecia	8 to 66
Peripheral neurotoxicity	1 to 2
Hypotension	1 to 2
Allergic reaction	1 to 2

**To report SUSPECTED ADVERSE REACTIONS, contact Meitheal Pharmaceuticals, Inc. at 1-844-824-8426 or FDA at 1-800-FDA-1088 or [www.fda.gov/medwatch](http://www.fda.gov/medwatch).**

## **OVERDOSAGE**

No proven antidotes have been established for etoposide injection overdose.

## **DOSAGE AND ADMINISTRATION**

**Note: Plastic devices made of acrylic or ABS (a polymer composed of acrylonitrile, butadiene, and styrene) have been reported to crack and leak when used with *undiluted* etoposide injection.**

## Etoposide Injection

The usual dose of etoposide injection in testicular cancer in combination with other approved chemotherapeutic agents ranges from 50 to 100 mg/m<sup>2</sup>/day on days 1 through 5 to 100 mg/m<sup>2</sup>/day on days 1, 3, and 5.

In small cell lung cancer, the etoposide injection dose in combination with other approved chemotherapeutic drugs ranges from 35 mg/m<sup>2</sup>/day for 4 days to 50 mg/m<sup>2</sup>/day for 5 days.

For recommended dosing adjustments in patients with renal impairment see **PRECAUTIONS** section.

Chemotherapy courses are repeated at 3- to 4-week intervals after adequate recovery from any toxicity.

The dosage should be modified to take into account the myelosuppressive effects of other drugs in the combination or the effects of prior x-ray therapy or chemotherapy which may have compromised bone marrow reserve.

### Administration Precautions

As with other potentially toxic compounds, caution should be exercised in handling and preparing the solution of etoposide injection. Skin reactions associated with accidental exposure to etoposide injection may occur. The use of gloves is recommended. If etoposide injection solution contacts the skin or mucosa, immediately and thoroughly wash the skin with soap and water and flush the mucosa with water.

### Preparation for Intravenous Administration

Etoposide injection must be diluted prior to use with either 5% Dextrose Injection, USP, or 0.9% Sodium Chloride Injection, USP, to give a final concentration of 0.2 to 0.4 mg/mL. If solutions are prepared at concentrations above 0.4 mg/mL, precipitation may occur. Hypotension following rapid intravenous administration has been reported, hence, it is recommended that the etoposide injection solution be administered over a 30- to 60-minute period. A longer duration of administration may be used if the volume of fluid to be infused is a concern. **Etoposide injection should not be given by rapid intravenous injection.**

Parenteral drug products should be inspected visually for particulate matter and discoloration (see **DESCRIPTION** section) prior to administration whenever solution and container permit.

### Stability

Unopened vials of etoposide injection are stable until the date indicated on the package at room temperature (25°C). Vials diluted as recommended to a concentration of 0.2 to 0.4 mg/mL are stable for 96 and 24 hours, respectively, at room temperature (25°C) under normal room fluorescent light in both glass and plastic containers.

**Procedures for proper handling and disposal** of anticancer drugs should be considered. Several guidelines on this subject have been published.<sup>1-8</sup> There is no general agreement that all of the procedures recommended in the guidelines are necessary or appropriate.

## HOW SUPPLIED

Etoposide Injection, USP, 20 mg per mL is supplied as follows:

<b>NDC</b>	<b>Etoposide Injection, USP (20 mg per mL)</b>	<b>Package Factor</b>
71288- <b>175</b> -05	100 mg per 5 mL Multi-Dose Vial	1 vial per carton
71288- <b>176</b> -25	500 mg per 25 mL Multi-Dose Vial	1 vial per carton
71288- <b>177</b> -50	1 gram per 50 mL Multi-Dose Vial	1 vial per carton

All are available individually packaged.

Store at 20° to 25°C (68° to 77°F). [See USP Controlled Room Temperature.]

DO NOT FREEZE.

**Sterile, Nonpyrogenic, Preservative-free.**

**The container closure is not made with natural rubber latex.**

## REFERENCES

1. ONS Clinical Practice Committee. Cancer Chemotherapy Guidelines and Recommendations for Practice Pittsburgh, PA: Oncology Nursing Society; 1999:32-41.
2. Recommendations for the safe handling of parenteral antineoplastic drugs. Washington, DC: Division of Safety, National Institutes of Health; 1983. US Dept of Health and Human Services, Public Health Service publication NIH 83-2621.
3. AMA Council on Scientific Affairs. Guidelines for handling parenteral antineoplastics. *JAMA*. 1985;253:1590-1591.
4. National Study Commission on Cytotoxic Exposure. Recommendations for handling cytotoxic agents. 1987. Available from Louis P. Jeffrey, Chairman, National Study Commission on Cytotoxic Exposure. Massachusetts College of Pharmacy and Allied Health Sciences, 179 Longwood Avenue, Boston, MA 02115.
5. Clinical Oncological Society of Australia. Guidelines and recommendations for safe handling of antineoplastic agents. *Med J Australia*. 1983;1:426-428.
6. Jones RB, Frank R, Mass T. Safe handling of chemotherapeutic agents: a report from the Mount Sinai Medical Center. *CA-A Cancer J for Clin*. 1983;33:258-263.
7. American Society of Hospital Pharmacists. ASHP technical assistance bulletin on handling cytotoxic and hazardous drugs. *Am J Hosp Pharm*. 1990;47:1033-1049.
8. Controlling Occupational Exposure to Hazardous Drugs. (OSHA Work-Practice Guidelines.). *Am J Health-SystPharm*. 1996;53:1669-1685.

meitheal®

Mfd. for Meitheal Pharmaceuticals

Chicago, IL 60631 (USA)

©2024 Meitheal Pharmaceuticals Inc.

Mfd. by Kindos Pharmaceuticals Co., Ltd.  
Chengdu, China 611731

June 2024

LB-667-V1

**PACKAGE LABEL PRINCIPAL DISPLAY PANEL - Etoposide Injection, USP 100 mg per 5 mL Vial Label**

NDC 71288-175-05

Rx Only

**Etoposide**

**Injection, USP**

**100 mg per 5 mL**

**(20 mg per mL)**

Must Be Diluted Before Intravenous Infusion

5 mL Multiple-Dose Vial

NDC 71288-175-05 Rx only

**Etoposide**  
Injection, USP

**100 mg per 5 mL**  
(20 mg per mL)

Must Be Diluted Before Intravenous Infusion  
5 mL Multiple-Dose Vial

Each mL contains: 20 mg etoposide, USP, 2 mg citric acid anhydrous, 80 mg polysorbate 80, 650 mg polyethylene glycol 300 (57.5% v/v and 65.0% w/v), and 262 mg dehydrated alcohol (33.2% v/v and 26.2% w/v). pH 3.0 to 4.0.

**Usual Dosage:** See package insert for full prescribing information.

Store at 20° to 25°C (68° to 77°F). [See USP Controlled Room Temperature.]  
DO NOT FREEZE.

Mfd. for Meitheal Pharmaceuticals  
Chicago, IL 60631 (USA)  
Made in China

LB-677-V1

(01)00371288175057

Lot:  
Exp.:

**PACKAGE LABEL PRINCIPAL DISPLAY PANEL - Etoposide Injection, USP 100 mg per 5 mL Carton Label**

NDC 71288-175-05

Rx Only

**Etoposide**

**Injection, USP**

**100 mg per 5 mL**

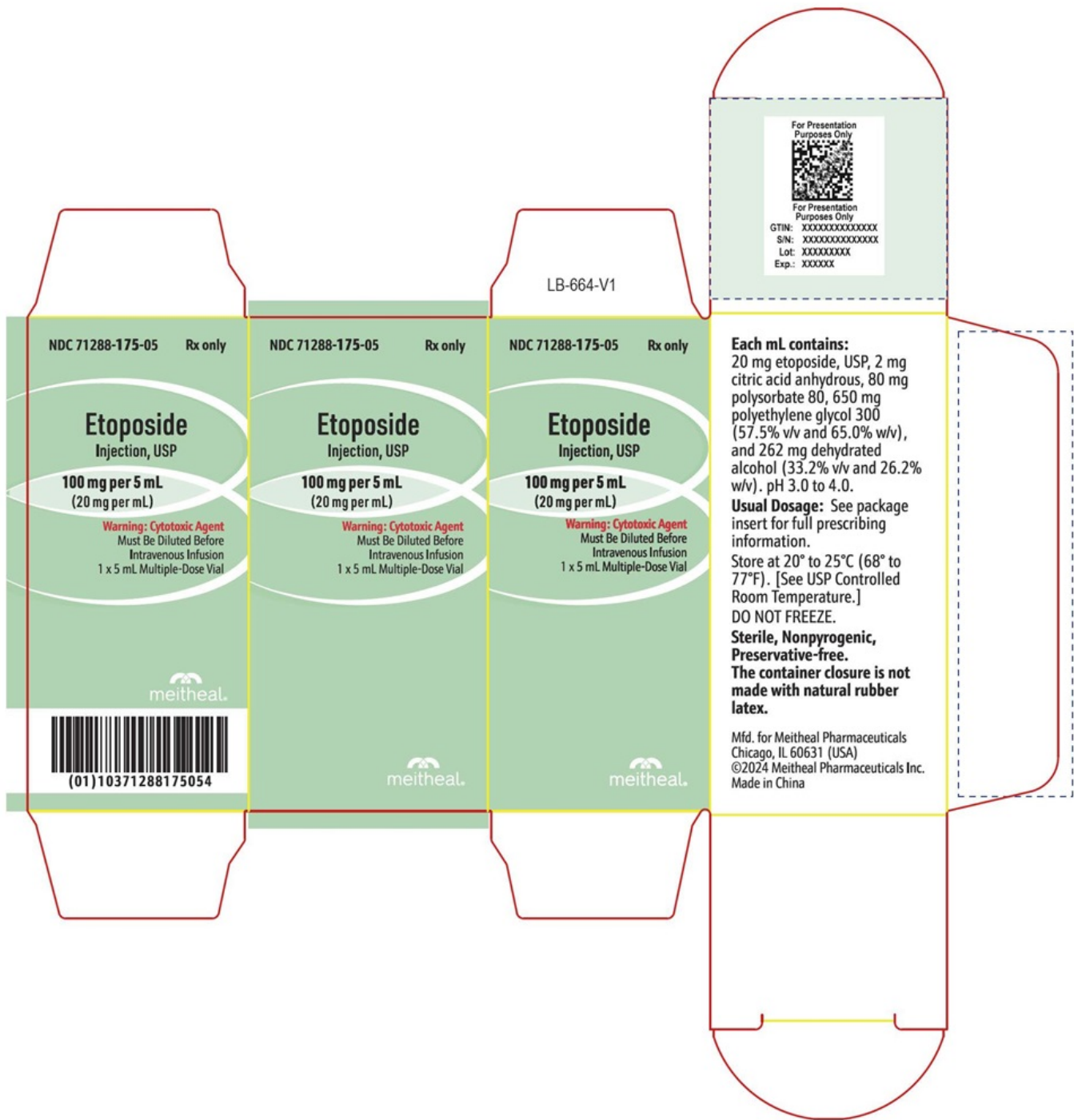
**(20 mg per mL)**

**Warning: Cytotoxic Agent**

Must Be Diluted Before

# Intravenous Infusion

1 x 5 mL Multiple-Dose Vial



## PACKAGE LABEL PRINCIPAL DISPLAY PANEL - Etoposide Injection, USP 500 mg per 25 mL Vial Label

NDC 71288-176-25

Rx Only

**Etoposide**

**Injection, USP**

**500 mg per 25 mL**

**(20 mg per mL)**

Must Be Diluted Before

Intravenous Infusion

25 mL Multiple-Dose Vial

NDC 71288-176-25 Rx only

# Etoposide

Injection, USP

**500 mg per 25 mL**  
(20 mg per mL)

Must Be Diluted Before  
Intravenous Infusion  
25 mL Multiple-Dose Vial

LB-663-V1

**Each mL contains:** 20 mg etoposide, USP, 2 mg citric acid anhydrous, 80 mg polysorbate 80, 650 mg polyethylene glycol 300 (57.5% v/v and 65.0% w/v), and 262 mg dehydrated alcohol (33.2% v/v and 26.2% w/v). pH 3.0 to 4.0.

**Usual Dosage:** See package insert for full prescribing information.

Store at 20° to 25°C (68° to 77°F). [See USP.]  
**DO NOT FREEZE.**

**Sterile, Nonpyrogenic, Preservative-free.**  
**This container closure is not made with natural rubber latex.**

Mfd. for Meritreal Pharmaceuticals  
Chicago, IL 60631 (USA), Made in China

(01)00371288176252

Lot:  
Exp.:

**PACKAGE LABEL PRINCIPAL DISPLAY PANEL - Etoposide Injection, USP 500 mg per 25 mL Carton Label**

NDC 71288-176-25

Rx Only

**Etoposide**

**Injection, USP**

**500 mg per 25 mL**

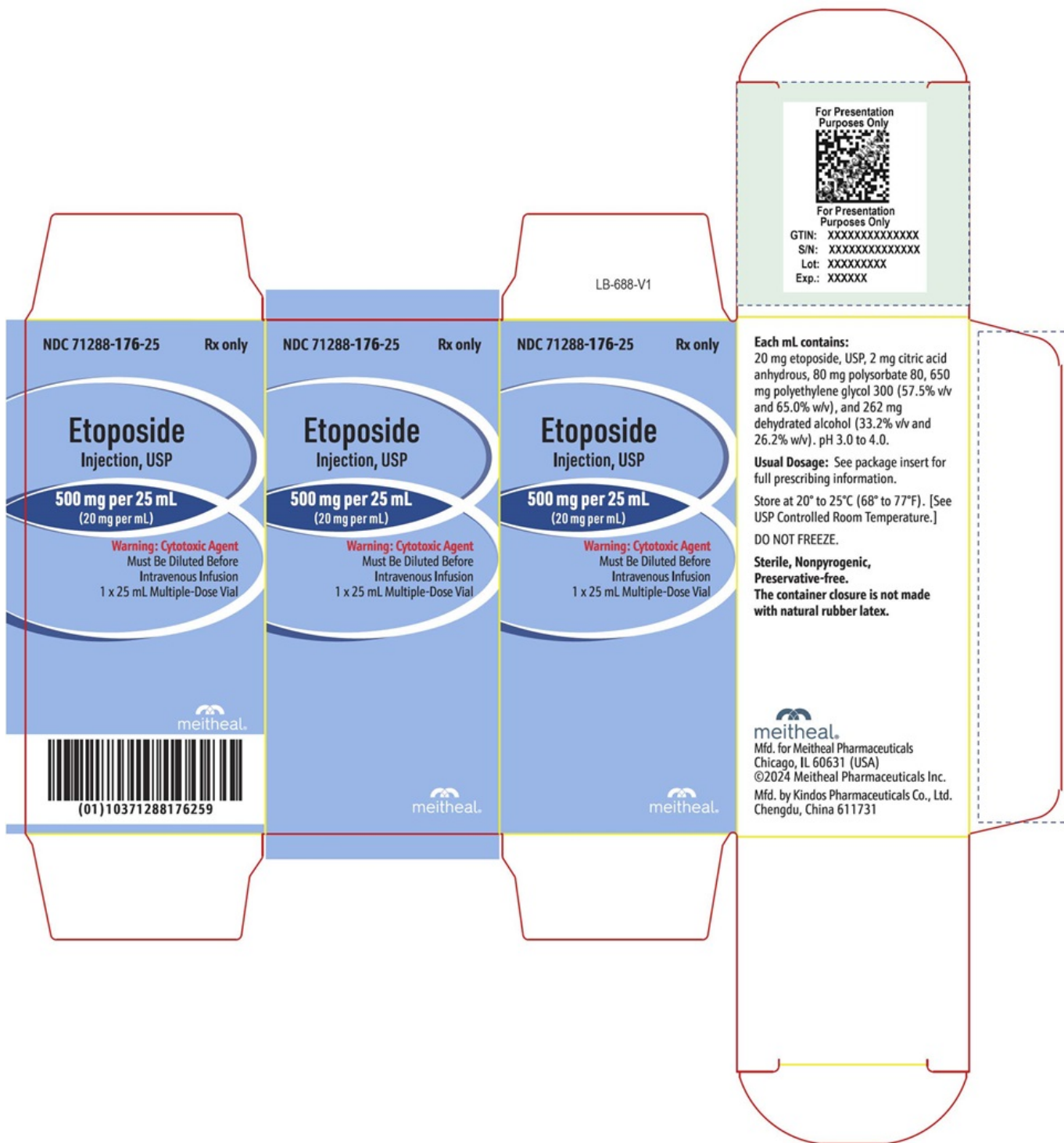
**(20 mg per mL)**

**Warning: Cytotoxic Agent**

Must Be Diluted Before

Intravenous Infusion

1 x 25 mL Multiple-Dose Vial



**PACKAGE LABEL PRINCIPAL DISPLAY PANEL - Etoposide Injection, USP 1 gram per 50 mL Vial Label**

NDC 71288-177-50

Rx Only

**Etoposide**

**Injection, USP**

**1 gram per 50 mL**

**(20 mg per mL)**

Must Be Diluted Before Intravenous Infusion

50 mL Multiple-Dose Vial

The image shows a rectangular carton label for Etoposide Injection, USP. The label is primarily white with orange and blue accents. At the top left, it displays the NDC number 71288-177-50 and 'Rx only'. The product name 'Etoposide' is prominently displayed in a large, bold, black font, with 'Injection, USP' underneath it. A large orange oval contains the text '1 gram per 50 mL (20 mg per mL)'. Below this, it states 'Must Be Diluted Before Intravenous Infusion' and '50 mL Multiple-Dose Vial'. On the right side, there is a vertical column of text containing 'Each mL contains: 20 mg etoposide, USP, 2 mg citric acid anhydrous, 80 mg polysorbate 80, 650 mg polyethylene glycol 300 (57.5% w/v and 65.0% w/v), and 262 mg dehydrated alcohol (33.2% v/v and 26.2% w/v). pH 3.0 to 4.0.', 'Usual Dosage: See package insert for full prescribing information.', 'Store at 20° to 25°C (68° to 77°F). [See USP Controlled Room Temperature.] DO NOT FREEZE.', 'Sterile, Nonpyrogenic, Preservative-free. This container closure is not made with natural rubber latex.', and 'LB-681-V1'. At the bottom right, there is a barcode with the number '(01)00371288177501' below it, and the Meitheal logo and company information: 'meitheal. Mfd. for Meitheal Pharmaceuticals Chicago, IL 60631 (USA) Made in China ©2024 Meitheal Pharmaceuticals Inc.'. The label also includes fields for 'Lot:' and 'Exp:'.

**PACKAGE LABEL PRINCIPAL DISPLAY PANEL - Etoposide Injection, USP 1 gram per 50 mL Carton Label**

NDC 71288-**177**-50

Rx Only

**Etoposide**

**Injection, USP**

**1 gram per 50 mL**

**(20 mg per mL)**

**Warning: Cytotoxic Agent**

Must Be Diluted Before Intravenous Infusion

1 x 50 mL Multiple-Dose Vial





## ETOPOSIDE

etoposide injection, solution, concentrate

### Product Information

<b>Product Type</b>	HUMAN PRESCRIPTION DRUG	<b>Item Code (Source)</b>	NDC:71288-175
<b>Route of Administration</b>	INTRAVENOUS		

### Active Ingredient/Active Moiety

Ingredient Name	Basis of Strength	Strength
<b>ETOPOSIDE</b> (UNII: 6PLQ3CP4P3) (ETOPOSIDE - UNII:6PLQ3CP4P3)	ETOPOSIDE	20 mg in 1 mL

## Inactive Ingredients

Ingredient Name	Strength
ANHYDROUS CITRIC ACID (UNII: XF417D3PSL)	
POLYSORBATE 80 (UNII: 6OZP39ZG8H)	
POLYETHYLENE GLYCOL 300 (UNII: 5655G9Y8AQ)	
ALCOHOL (UNII: 3K9958V90M)	

## Packaging

#	Item Code	Package Description	Marketing Start Date	Marketing End Date
1	NDC:71288-175-05	1 in 1 CARTON	02/01/2025	
1		5 mL in 1 VIAL, MULTI-DOSE; Type 0: Not a Combination Product		

## Marketing Information

Marketing Category	Application Number or Monograph Citation	Marketing Start Date	Marketing End Date
ANDA	ANDA074529	02/01/2025	

## ETOPOSIDE

etoposide injection, solution, concentrate

### Product Information

Product Type	HUMAN PRESCRIPTION DRUG	Item Code (Source)	NDC:71288-176
Route of Administration	INTRAVENOUS		

### Active Ingredient/Active Moiety

Ingredient Name	Basis of Strength	Strength
ETOPOSIDE (UNII: 6PLQ3CP4P3) (ETOPOSIDE - UNII:6PLQ3CP4P3)	ETOPOSIDE	20 mg in 1 mL

## Inactive Ingredients

Ingredient Name	Strength
ANHYDROUS CITRIC ACID (UNII: XF417D3PSL)	
POLYSORBATE 80 (UNII: 6OZP39ZG8H)	
POLYETHYLENE GLYCOL 300 (UNII: 5655G9Y8AQ)	
ALCOHOL (UNII: 3K9958V90M)	

## Packaging

#	Item Code	Package Description	Marketing Start Date	Marketing End Date
---	-----------	---------------------	----------------------	--------------------

#	Item Code	Package Description	Marketing Start Date	Marketing End Date
1	NDC:71288-176-25	1 in 1 CARTON	02/01/2025	
1		25 mL in 1 VIAL, MULTI-DOSE; Type 0: Not a Combination Product		

## Marketing Information

Marketing Category	Application Number or Monograph Citation	Marketing Start Date	Marketing End Date
ANDA	ANDA074529	02/01/2025	

## ETOPOSIDE

etoposide injection, solution, concentrate

### Product Information

Product Type	HUMAN PRESCRIPTION DRUG	Item Code (Source)	NDC:71288-177
Route of Administration	INTRAVENOUS		

### Active Ingredient/Active Moiety

Ingredient Name	Basis of Strength	Strength
ETOPOSIDE (UNII: 6PLQ3CP4P3) (ETOPOSIDE - UNII:6PLQ3CP4P3)	ETOPOSIDE	20 mg in 1 mL

### Inactive Ingredients

Ingredient Name	Strength
ANHYDROUS CITRIC ACID (UNII: XF417D3PSL)	
POLYSORBATE 80 (UNII: 6OZP39ZG8H)	
POLYETHYLENE GLYCOL 300 (UNII: 5655G9Y8AQ)	
ALCOHOL (UNII: 3K9958V90M)	

### Packaging

#	Item Code	Package Description	Marketing Start Date	Marketing End Date
1	NDC:71288-177-50	1 in 1 CARTON	02/01/2025	
1		50 mL in 1 VIAL, MULTI-DOSE; Type 0: Not a Combination Product		

## Marketing Information

Marketing Category	Application Number or Monograph Citation	Marketing Start Date	Marketing End Date
ANDA	ANDA074529	02/01/2025	

---

**Labeler** - Meitheal Pharmaceuticals Inc. (080548348)

**Registrant** - Meitheal Pharmaceuticals Inc. (080548348)

Revised: 6/2024

Meitheal Pharmaceuticals Inc.