

NATRUM MURIATICUM- natrum muriaticum pellet
Rxhomeo Private Limited d.b.a. Rxhomeo, Inc

Disclaimer: This homeopathic product has not been evaluated by the Food and Drug Administration for safety or efficacy. FDA is not aware of scientific evidence to support homeopathy as effective.

ACTIVE INGREDIENT

NATRUM MURIATICUM HPUS 1X and higher

USES

USES: Temporary Relief - Headache*

* Claims based on traditional homeopathic practice, not accepted medical evidence. Not FDA evaluated.

INDICATIONS

Condition listed above or as directed by the physician

DOSAGE

Adults- Take 4 or 6 Pellets by mouth, three times daily or as suggested by physician.
Children 2 years and older- take 1/2 the adult dose.

WARNINGS

This product is to be used for self-limiting conditions

If symptoms do not improve in 4 days, or worsen, discontinue use and seek assistance of health professional

As with any drug, if you are pregnant, or nursing a baby, seek professional advice before taking this product

Keep this and all medication out of reach of children

INACTIVE INGREDIENTS

Sucrose

STORAGE

Store in a cool dark place

QUESTIONS OR COMMENTS

www.Rxhomeo.com | 1.888.2796642 | info@rxhomeo.com

Rxhomeo, Inc 3200 Commander Dr, Ste 100-W1, Carrollton, TX 75006 USA



rxhomeo.com

NATRUM MURIATICUM 1X

Ingredients: Active: As Above, Inactive: Sucrose

USES: Temporary Relief - Headache*

* Claims based on traditional homeopathic practices, not accepted medical evidence. Not FDA evaluated.



XXX Pellets

Dosage: Adults- Take 4 or 6 pellets by mouth, three times daily or as directed by physician. Children 2 years and older -Take 1/2 the adult dose.



Distributed by Rxhomeo, Inc 3200 Commander Dr. Ste 100-W1, Carrollton, TX 75006 USA Manufactured by: Rxhomeo Private Limited "Indradhanush", 4-1-424 to 426, Bank Street, Abids, Hyderabad #1 India.

NDC 15631-0309 B.No XXXXXXXXXXX MFD XX/XX EXP XX/XX

HOMEOPATHIC MEDICINE

<<< MINI LABEL USED
WITH BLISTER PACK FOR
SELECT PACK SIZES



NATRUM MURIATICUM 1X

Ingredients: Active: As Above, Inactive: Sucrose

USES: Temporary Relief - Headache*

* Claims based on traditional homeopathic practices, not accepted medical evidence. Not FDA evaluated.



8 907460 005526



Dosage: Adults- Take 4 or 6 pellets by mouth, three times daily or as directed by physician. Children 2 years and older -Take 1/2 the adult dose. Warnings: This product is to be used for self-limiting conditions. If symptoms do not improve in 4 days, or worsen, discontinue use and seek assistance of a health professional * As with any drug, if you are pregnant or nursing a baby, seek professional advice before taking this product * Keep this and all medication out of reach of children * Store in a cool dark place * Do not use if capseal is broken or missing * Close cap tightly after use.



Distributed by Rxhomeo, Inc 3200 Commander Dr. Ste 100-W1, Carrollton, TX 75006 USA Manufactured by: Rxhomeo Private Limited "Indradhanush", 4-1-424 to 426, Bank Street, Abids, Hyderabad #500001 India.

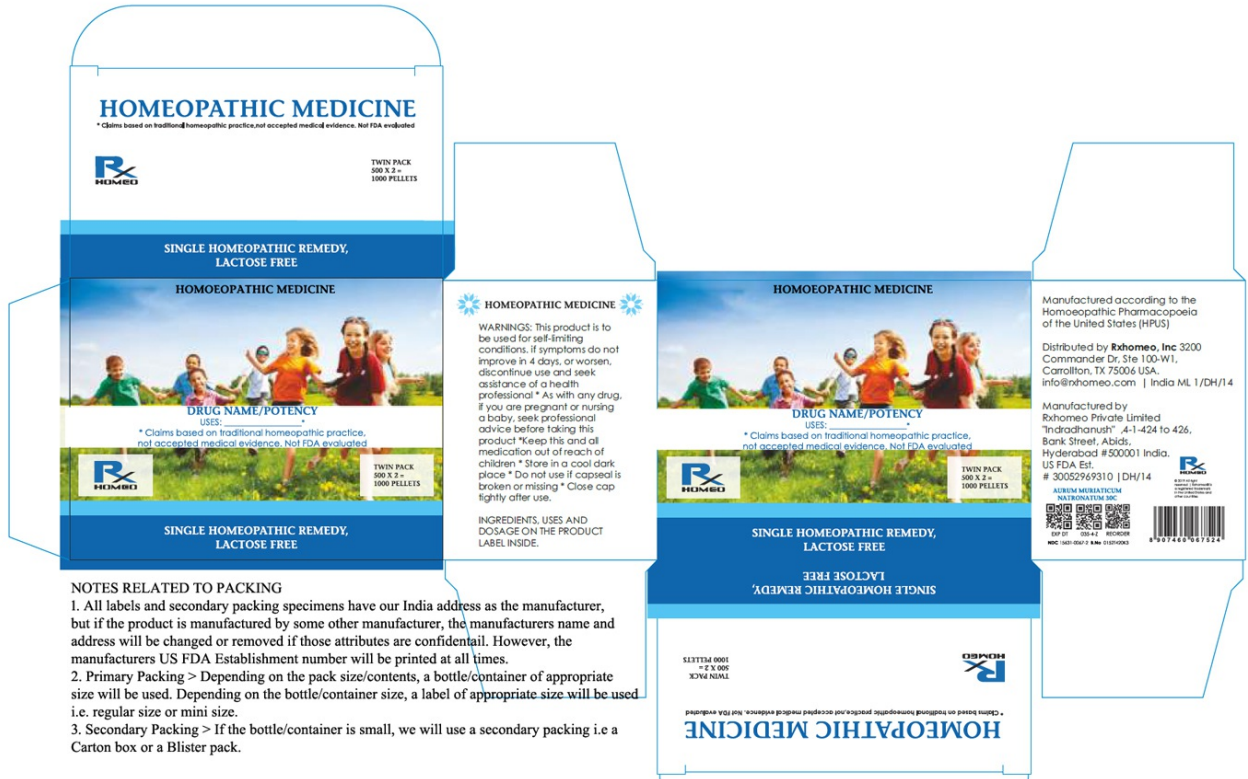
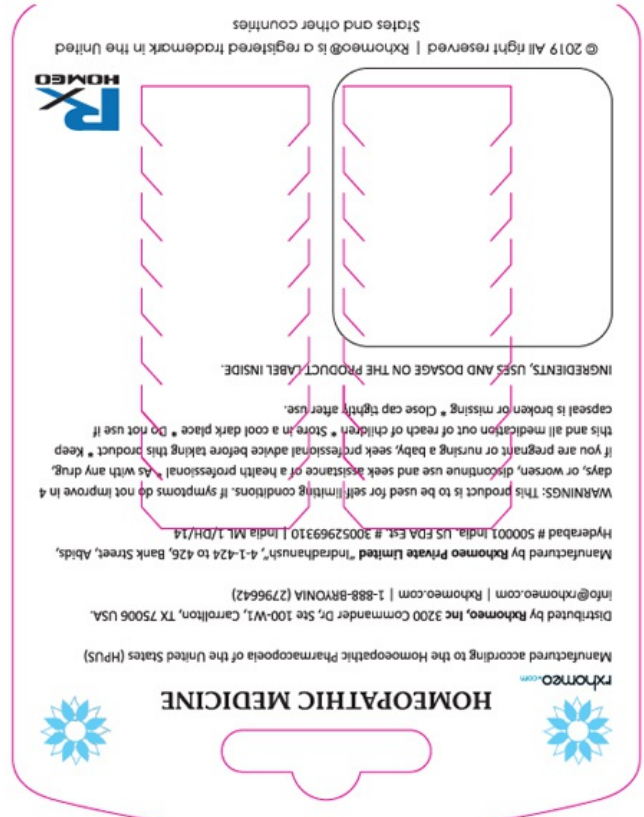
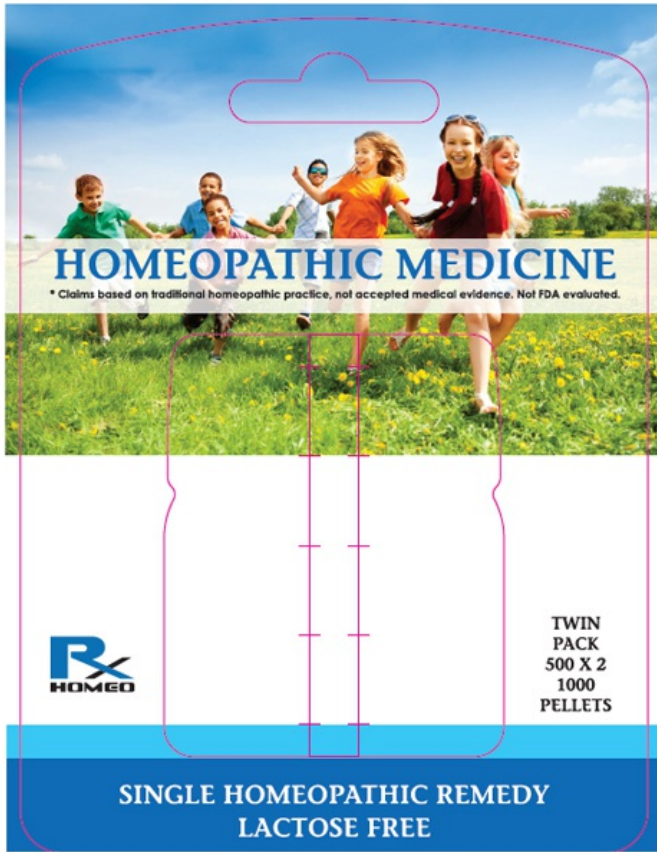
NDC 15631-0309 B.No XXXXXXXXXXX MFD XX/XX EXP XX/XX Contents 100 Pellets



HOMEOPATHIC MEDICINE



Manufactured according to the Homeopathic Pharmacopoeia of the United States
FDA Est # 30052969310 | India M.L 1/DH/14
info@rxhomeo.com | Rxhomeo.com
1-888-8RYONIA (2796642)



NATRUM MURIATICUM

natrum muriaticum pellet

Product Information

Product Type	HUMAN OTC DRUG	Item Code (Source)	NDC:15631-0309	
Route of Administration	ORAL			
Active Ingredient/Active Moiety				
Ingredient Name		Basis of Strength	Strength	
SODIUM CHLORIDE (UNII: 451W47IQ8X) (CHLORIDE ION - UNII:Q32ZN48698)		SODIUM CHLORIDE	1 [hp_X]	
Inactive Ingredients				
Ingredient Name			Strength	
SUCROSE (UNII: C151H8M554)				
Packaging				
#	Item Code	Package Description	Marketing Start Date	Marketing End Date
1	NDC:15631-0309-0	100 in 1 PACKAGE; Type 0: Not a Combination Product	01/01/2018	
2	NDC:15631-0309-1	200 in 1 PACKAGE; Type 0: Not a Combination Product	01/01/2018	
3	NDC:15631-0309-2	400 in 1 PACKAGE; Type 0: Not a Combination Product	01/01/2018	
4	NDC:15631-0309-3	750 in 1 PACKAGE; Type 0: Not a Combination Product	01/01/2018	
5	NDC:15631-0309-4	2500 in 1 PACKAGE; Type 0: Not a Combination Product	01/01/2018	
6	NDC:15631-0309-5	12500 in 1 PACKAGE; Type 0: Not a Combination Product	01/01/2018	
7	NDC:15631-0309-6	500 in 1 PACKAGE; Type 0: Not a Combination Product	08/23/2021	
8	NDC:15631-0309-7	1000 in 1 PACKAGE; Type 0: Not a Combination Product	08/23/2021	
Marketing Information				
Marketing Category	Application Number or Monograph Citation		Marketing Start Date	Marketing End Date
unapproved homeopathic			09/10/2015	

Labeler - Rxhomeo Private Limited d.b.a. Rxhomeo, Inc (650833994)

Establishment

Name	Address	ID/FEI	Business Operations
Rxhomeo Private Limited d.b.a. Rxhomeo, Inc		650833994	manufacture(15631-0309) , label(15631-0309)