

SINUS RELIEF- kali bichromicum, luffa operculata, sabadilla spray
Similasan Corporation

Disclaimer: This homeopathic product has not been evaluated by the Food and Drug Administration for safety or efficacy. FDA is not aware of scientific evidence to support homeopathy as effective.

Sinus Relief preservative free

Drug Facts

Active Ingredient

Kali bichromicum 6X

Purpose

sinus congestion, runny nose, sinus pressure, nasal dryness

Active Ingredient

Luffa operculata 6X

Purpose

runny nose, nasal dryness, sinus congestion

Active Ingredient

Sabadilla 6X

Purpose

sneezing, itching

Uses*:

According to homeopathic principles, the active ingredients in this product temporarily relieve minor symptoms such as:

- Runny nose due to colds
- Sinus pressure
- Nasal congestion
- Post-nasal drip
- Irritating dryness of nasal passages

Warnings:

- According to homeopathic principles, symptoms may temporarily worsen before improving (Initial exacerbation of symptoms).
- Replace cap tightly after every use.
- To avoid contamination, do not touch the tip of the container to any surface besides nose.
- Discard open bottle after 6 months.
- The use of this container by more than one person may spread infection.

If pregnant, trying to get pregnant or breast feeding,

ask a health professional before use.

Keep out of reach of children.

If swallowed, get medical help or contact a Poison Control Center right away.

Ask a doctor before use if you:

- Are susceptible to nose bleeds.
- Are prone to ear, nose, or throat sensitivity.

Stop use and ask a doctor if:

- Symptoms worsen or persist for more than 72 hours

Directions:

For adults and children ages 2 and over:

- Remove tamper-evident plastic seal from bottle.
- Lift cap off bottle.
- Spray 1-3 times into each nostril.
- Use as needed.
- Replace cap after use.

Other information:

Active ingredients are manufactured according to homeopathic principles.

Inactive Ingredients:

Purified water, Sodium chloride

Questions?

Reach our representatives **1-800-240-9780** or
getinfo@similasanusa.com. **www.SimilasanUSA.com**

Principal Display Panel

**Similasan
Sinus Relief
NASAL MIST
PRESERVATIVE FREE
NON-HABIT FORMING
20 ml / 0.68 fl oz**

NATURAL ACTIVE INGREDIENTS

NET WT
Sinus Relief™

Similasan

Drug Facts

Active ingredients Purpose

Kali bichromicum 6X sinus congestion, runny nose, sinus pressure, nasal dryness
Luffa operculata 6X runny nose, nasal dryness, sinus congestion
Sabadilla 6X sneezing, itching

Uses*

According to homeopathic principles, the active ingredients in this product temporarily relieve minor symptoms such as:

- Runny nose due to colds
- Sinus pressure
- Nasal congestion
- Post-nasal drip
- Irritating dryness of nasal passages

Warnings

- According to homeopathic principles, symptoms may temporarily worsen before improving (initial exacerbation of symptoms).
- Replace cap tightly after every use.
- To avoid contamination, do not touch the tip of the container to any surface besides nose.
- Discard open bottle after 6 months.
- The use of this container by more than one person may spread infection.

If pregnant, trying to get pregnant or breast feeding, ask a health professional before use.

Keep out of reach of children. If swallowed, get medical help or contact a Poison Control Center right away.

Ask a doctor before use if you:

- Are susceptible to nose bleeds,
- Are prone to ear, nose or throat sensitivity,

Stop use and ask a doctor if:

- symptoms worsen or persist for more than 72 hours

*Claims based on traditional homeopathic practice, not accepted medical evidence. Not FDA evaluated.

Drug Facts (continued)

Directions

For adults and children ages 2 and over:

- Remove tamper-evident plastic seal from bottle.
- Lift cap off bottle.
- Spray 1-3 times into each nostril.
- Use as needed.
- Replace cap after use.



Other Information

Active ingredients are manufactured according to homeopathic principles.

Inactive Ingredients

Purified water, Sodium chloride

Questions?

Reach our representatives at **1-800-240-9780** or getinfo@similasanusa.com. www.SimilasanUSA.com

For your protection do not use if tamper-evident seal around neck of bottle is missing or broken.



Similasan

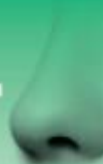
Sinus Relief™

NASAL MIST

**PRESERVATIVE FREE
NON-HABIT FORMING**

MULTI-SYMPOM RELIEF

- Sinus Pressure
- Sinus Congestion
- Sinus Dryness



NATURAL ACTIVE INGREDIENTS

Alivio de la Sinusitis

ES
Español

Nebulización Nasal Homeopática

LIBRE DE PRESERVATIVOS

INGREDIENTES ACTIVOS

NATURALES

NO FORMA HÁBITO

ALIVIO DE MÚLTIPLES

SÍNTOMAS

- Presión en las senas nasales
- Congestión en las senas nasales

Instrucciones en español adentro

Similasan, trusted for over 40 years in Switzerland.

No Harsh Chemicals

Similasan and Similasan Sinus Relief are trademarks of TAS Eye Care Management AG, Switzerland, and the Similasan logo is a registered trademark of TAS Eye Care Management AG, Switzerland. Manufactured by: Similasan AG, 8910 Jona, Switzerland. Imported and Distributed by: Similasan Corporation, Highlands Ranch, CO 80129. Made in Switzerland.

www.SimilasanUSA.com

Feel Good About Feeling Better™

HOMEOPATHIC
Original Swiss Formula
20 ml / 0.68 fl oz



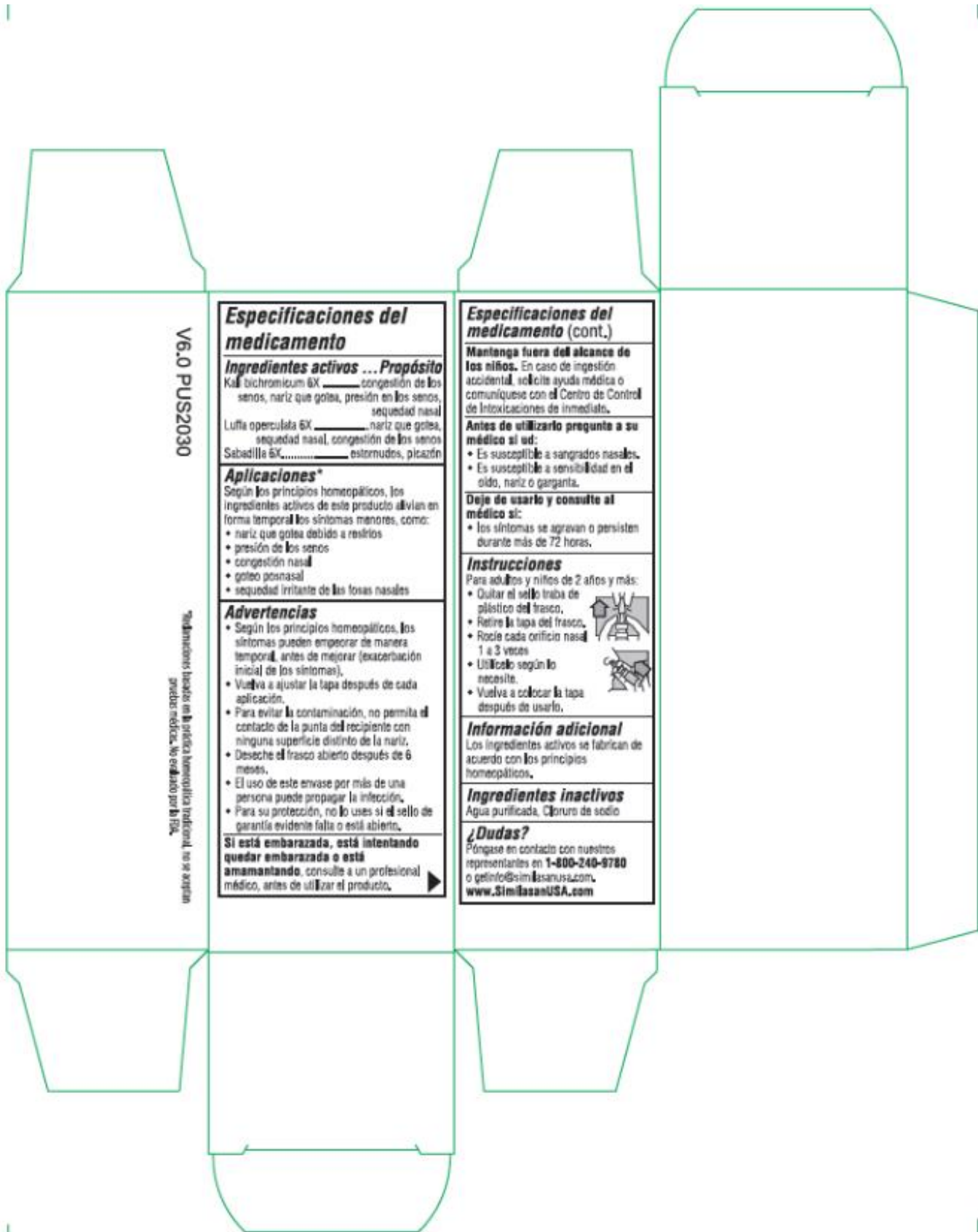
NDC 59262-240-20



unprinted/uncoated area
Farb/Lackausparung

V6.0 PUS2030

Space (at minimum 7mm)
EXP. and batch
XX/XXXX XXXX



V6.0 PUS2030

Referencias basadas en la práctica homeopática tradicional, no se requieren pruebas médicas. No evaluado por la FDA.

Especificaciones del medicamento

Ingredientes activos ... Propósito

Kali bichromicum 6X congestión de los senos, nariz que gotea, presión en los senos, sequedad nasal
 Luffa operculata 6X nariz que gotea, sequedad nasal, congestión de los senos
 Sabadilla 6X estornudos, picazón

Aplicaciones*

Según los principios homeopáticos, los ingredientes activos de este producto alivian en forma temporal los síntomas menores, como:

- nariz que gotea debido a resfrios
- presión de los senos
- congestión nasal
- goteo posnasal
- sequedad irritante de las fosas nasales

Advertencias

- Según los principios homeopáticos, los síntomas pueden empeorar de manera temporal, antes de mejorar (exacerbación inicial) de los síntomas.
- Vuelva a ajustar la tapa después de cada aplicación.
- Para evitar la contaminación, no permita el contacto de la punta del recipiente con ninguna superficie distinto de la nariz.
- Deseche el frasco abierto después de 6 meses.
- El uso de este envase por más de una persona puede propagar la infección.
- Para su protección, no lo uses si el sello de garantía evidente falta o está abierto.

Si está embarazada, está intentando quedar embarazada o está amamantando, consulte a un profesional médico, antes de utilizar el producto. ▶

Especificaciones del medicamento (cont.)

Mantenga fuera del alcance de los niños. En caso de ingestión accidental, solicite ayuda médica o comuníquese con el Centro de Control de Intoxicaciones de inmediato.

Antes de utilizarlo pregunte a su médico si ud:

- Es susceptible a sangrados nasales.
- Es susceptible a sensibilidad en el oído, nariz o garganta.

Deje de usarlo y consulte al médico si:

- Los síntomas se agravan o persisten durante más de 72 horas.

Instrucciones

Para adultos y niños de 2 años y más:

- Quitar el sello traba de plástico del frasco.
- Retire la tapa del frasco.
- Rocíe cada orificio nasal 1 a 3 veces.
- Utilícelo según lo necesite.
- Vuelva a colocar la tapa después de usarlo.



Información adicional

Los ingredientes activos se fabrican de acuerdo con los principios homeopáticos.

Ingredientes inactivos

Agua purificada, Cloruro de sodio

¿Dudas?

Póngase en contacto con nuestros representantes en **1-800-240-8780** o pefinfo@similasanusa.com, www.SimilasanUSA.com

SINUS RELIEF

kali bichromicum, luffa operculata, sabadilla spray

Product Information

Product Type	HUMAN OTC DRUG	Item Code (Source)	NDC:59262-240
Route of Administration	NASAL		

Active Ingredient/Active Moiety

Ingredient Name	Basis of Strength	Strength
POTASSIUM DICHROMATE (UNII: T4423S18FM) (DICHROMATE ION - UNII:9LKY4BFN2V)	POTASSIUM DICHROMATE	6 [hp_X] in 20 mL
LUFFA OPERCULATA FRUIT (UNII: C4MO6809HU) (LUFFA OPERCULATA FRUIT - UNII:C4MO6809HU)	LUFFA OPERCULATA FRUIT	6 [hp_X] in 20 mL
SCHOENOCAULON OFFICINALE SEED (UNII: 6NAF1689IO) (SCHOENOCAULON OFFICINALE SEED - UNII:6NAF1689IO)	SCHOENOCAULON OFFICINALE SEED	6 [hp_X] in 20 mL

Inactive Ingredients

Ingredient Name	Strength
WATER (UNII: 059QF0KO0R)	
SODIUM CHLORIDE (UNII: 451W47IQ8X)	

Packaging

#	Item Code	Package Description	Marketing Start Date	Marketing End Date
1	NDC:59262-240-20	20 mL in 1 BOTTLE, SPRAY; Type 2: Prefilled Drug Delivery Device/System (syringe, patch, etc.)	07/02/2013	

Marketing Information

Marketing Category	Application Number or Monograph Citation	Marketing Start Date	Marketing End Date
unapproved homeopathic		07/02/2013	

Labeler - Similasan Corporation (111566530)

Revised: 4/2021

Similasan Corporation