

**IVABRADINE - ivabradine tablet, film coated**  
**Alembic Pharmaceuticals Inc.**

-----

**HIGHLIGHTS OF PRESCRIBING INFORMATION**

**These highlights do not include all the information needed to use IVABRADINE TABLETS safely and effectively. See full prescribing information for IVABRADINE TABLETS.**

**IVABRADINE tablets, for oral use**

**Initial U.S. Approval: 2015**

----- **INDICATIONS AND USAGE** -----

Ivabradine tablets are hyperpolarization-activated cyclic nucleotide-gated channel blocker indicated:

- To reduce the risk of hospitalization for worsening heart failure in adult patients with stable, symptomatic chronic heart failure with reduced left ventricular ejection fraction. (1.1)

----- **DOSAGE AND ADMINISTRATION** -----

**Adult patients**

- Starting dose is 2.5 (vulnerable adults) or 5 mg twice daily with food. After 2 weeks of treatment, adjust dose based on heart rate. The maximum dose is 7.5 mg twice daily. (2.1)

----- **DOSAGE FORMS AND STRENGTHS** -----

- Tablets: 5 mg (having functional scoring), 7.5 mg (3)

----- **CONTRAINDICATIONS** -----

- Acute decompensated heart failure (4)
- Clinically significant hypotension (4)
- Sick sinus syndrome, sinoatrial block or 3<sup>rd</sup> degree AV block, unless a functioning demand pacemaker is present (4)
- Clinically significant bradycardia (4)
- Severe hepatic impairment (4)
- Heart rate maintained exclusively by the pacemaker (4)
- In combination with strong cytochrome CYP3A4 inhibitors (4)

----- **WARNINGS AND PRECAUTIONS** -----

- Fetal toxicity: Females should use effective contraception. (5.1)
- Monitor patients for atrial fibrillation. (5.2)
- Monitor heart rate decreases and bradycardia symptoms during treatment. (5.3)
- Not recommended in patients with 2<sup>nd</sup> degree AV block. (5.3)

----- **ADVERSE REACTIONS** -----

Most common adverse reactions occurring in  $\geq 1\%$  of patients are bradycardia, hypertension, atrial fibrillation and luminous phenomena (phosphenes). (6)

**To report SUSPECTED ADVERSE REACTIONS, contact Alembic Pharmaceuticals Limited at 1-866-210-9797 or FDA at 1-800-FDA-1088 or [www.fda.gov/medwatch](http://www.fda.gov/medwatch).**

----- **DRUG INTERACTIONS** -----

- Avoid CYP3A4 inhibitors or inducers. (7.1)
- Negative chronotropes increase risk of bradycardia; monitor heart rate. (7.2)

----- **USE IN SPECIFIC POPULATIONS** -----

- Lactation: Breastfeeding not recommended. (8.2)

**See 17 for PATIENT COUNSELING INFORMATION and Medication Guide.**

**Revised: 9/2024**

---

**FULL PRESCRIBING INFORMATION: CONTENTS\***

**1 INDICATIONS AND USAGE**

1.1 Heart Failure in Adult Patients

**2 DOSAGE AND ADMINISTRATION**

2.1 Adults

**3 DOSAGE FORMS AND STRENGTHS**

#### **4 CONTRAINDICATIONS**

#### **5 WARNINGS AND PRECAUTIONS**

- 5.1 Fetal Toxicity
- 5.2 Atrial Fibrillation
- 5.3 Bradycardia and Conduction Disturbances

#### **6 ADVERSE REACTIONS**

- 6.1 Clinical Trials Experience
- 6.2 Postmarketing Experience

#### **7 DRUG INTERACTIONS**

- 7.1 Cytochrome P450-Based Interactions
- 7.2 Negative Chronotropes
- 7.3 Pacemakers in Adults

#### **8 USE IN SPECIFIC POPULATIONS**

- 8.1 Pregnancy
- 8.2 Lactation
- 8.3 Females and Males of Reproductive Potential
- 8.4 Pediatric Use
- 8.5 Geriatric Use
- 8.6 Hepatic Impairment
- 8.7 Renal Impairment

#### **10 OVERDOSAGE**

#### **11 DESCRIPTION**

#### **12 CLINICAL PHARMACOLOGY**

- 12.1 Mechanism of Action
- 12.2 Pharmacodynamics
- 12.3 Pharmacokinetics

#### **13 NONCLINICAL TOXICOLOGY**

- 13.1 Carcinogenesis, Mutagenesis, Impairment of Fertility
- 13.2 Animal Toxicology and/or Pharmacology

#### **14 CLINICAL STUDIES**

- 14.1 Heart Failure in Adult Patients

#### **16 HOW SUPPLIED/STORAGE AND HANDLING**

#### **17 PATIENT COUNSELING INFORMATION**

\* Sections or subsections omitted from the full prescribing information are not listed.

---

## **FULL PRESCRIBING INFORMATION**

### **1 INDICATIONS AND USAGE**

#### **1.1 Heart Failure in Adult Patients**

Ivabradine tablets are indicated to reduce the risk of hospitalization for worsening heart failure in adult patients with stable, symptomatic chronic heart failure with left ventricular ejection fraction  $\leq 35\%$ , who are in sinus rhythm with resting heart rate  $\geq 70$  beats per minute and either are on maximally tolerated doses of beta-blockers or have a contraindication to beta-blocker use.

### **2 DOSAGE AND ADMINISTRATION**

#### **2.1 Adults**

The recommended starting dose of ivabradine tablet is 5 mg twice daily with food. Assess patient after two weeks and adjust dose to achieve a resting heart rate between

50 and 60 beats per minute (bpm) as shown in Table 1. Thereafter, adjust dose as needed based on resting heart rate and tolerability. The maximum dose is 7.5 mg twice daily. In adult patients unable to swallow tablets, ivabradine oral solution can be used [see *Clinical Pharmacology (12.3)*].

In patients with a history of conduction defects or other patients in whom bradycardia could lead to hemodynamic compromise, initiate therapy at 2.5 mg twice daily before increasing the dose based on heart rate [see *Warnings and Precautions (5.3)*].

**Table 1. Dose Adjustment for Adults**

<b>Heart Rate</b>	<b>Dose Adjustment</b>
> 60 bpm	Increase dose by 2.5 mg (given twice daily) up to a maximum dose of 7.5 mg twice daily
50 to 60 bpm	Maintain dose
< 50 bpm or signs and symptoms of bradycardia	Decrease dose by 2.5 mg (given twice daily); if current dose is 2.5 mg twice daily, discontinue therapy*

\*[see *Warnings and Precautions (5.3)*]

### 3 DOSAGE FORMS AND STRENGTHS

Ivabradine tablets 5 mg having functional scoring are light salmon to salmon-colored, oval-shaped, film-coated tablets scored on both edges, debossed with 'A', score and '7' on one face and plain on the other face.

Ivabradine tablets 7.5 mg are light salmon to salmon-colored, triangular-shaped, film-coated tablets debossed with '662' on one face and 'L' on the other face.

### 4 CONTRAINDICATIONS

Ivabradine tablets are contraindicated in patients with:

- Acute decompensated heart failure
- Clinically significant hypotension
- Sick sinus syndrome, sinoatrial block or 3<sup>rd</sup> degree AV block, unless a functioning demand pacemaker is present
- Clinically significant bradycardia [see *Warnings and Precautions (5.3)*]
- Severe hepatic impairment [see *Use in Specific Populations (8.6)*]
- Pacemaker dependence (heart rate maintained exclusively by the pacemaker) [see *Drug Interactions (7.3)*]
- Concomitant use of strong cytochrome P450 3A4 (CYP3A4) inhibitors [see *Drug Interactions (7.1)*]

### 5 WARNINGS AND PRECAUTIONS

#### 5.1 Fetal Toxicity

Ivabradine may cause fetal toxicity when administered to a pregnant woman based on findings in animal studies. Embryo-fetal toxicity and cardiac teratogenic effects were observed in fetuses of pregnant rats treated during organogenesis at exposures 1 to 3 times the human exposures (AUC<sub>0-24hr</sub>) at the maximum recommended human dose (MRHD) [see *Use in Specific Populations (8.1)*]. Advise females of reproductive potential to use effective contraception when taking ivabradine [see *Use in Specific Populations*

(8.3)].

## 5.2 Atrial Fibrillation

Ivabradine increases the risk of atrial fibrillation. In the Systolic Heart Failure Treatment with the I<sub>f</sub> Inhibitor Ivabradine Trial (SHIFT), the rate of atrial fibrillation was 5% per patient-year in patients treated with ivabradine and 3.9% per patient-year in patients treated with placebo [see *Clinical Studies (14)*]. Regularly monitor cardiac rhythm. Discontinue ivabradine if atrial fibrillation develops.

## 5.3 Bradycardia and Conduction Disturbances

### Adult Patients

Bradycardia, sinus arrest, and heart block have occurred with ivabradine. The rate of bradycardia was 6% per patient-year in patients treated with ivabradine (2.7% symptomatic; 3.4% asymptomatic) and 1.3% per patient-year in patients treated with placebo. Risk factors for bradycardia include sinus node dysfunction, conduction defects (e.g., 1<sup>st</sup> or 2<sup>nd</sup> degree atrioventricular block, bundle branch block), ventricular dyssynchrony, and use of other negative chronotropes (e.g., digoxin, diltiazem, verapamil, amiodarone). Bradycardia may increase the risk of QT prolongation which may lead to severe ventricular arrhythmias, including torsade de pointes, especially in patients with risk factors such as use of QTc prolonging drugs [see *Adverse Reactions (6.2)*].

Concurrent use of verapamil or diltiazem will increase ivabradine exposure, may themselves contribute to heart rate lowering, and should be avoided [see *Clinical Pharmacology (12.3)*]. Avoid use of ivabradine in patients with 2<sup>nd</sup> degree atrioventricular block unless a functioning demand pacemaker is present [see *Contraindications (4)*].

## 6 ADVERSE REACTIONS

Clinically significant adverse reactions that appear in other sections of the labeling include:

- Atrial Fibrillation [see *Warnings and Precautions (5.2)*]
- Bradycardia and Conduction Disturbances [see *Warnings and Precautions (5.3)*]

### 6.1 Clinical Trials Experience

Because clinical trials are conducted under widely varying conditions, adverse reaction rates observed in the clinical trials of a drug cannot be directly compared to rates in the clinical trials of another drug and may not reflect the rates observed in practice.

#### Adult Patients with Heart Failure

In SHIFT, safety was evaluated in 3,260 patients treated with ivabradine and 3,278 patients given placebo. The median duration of ivabradine exposure was 21.5 months.

The most common adverse drug reactions in the SHIFT trial are shown in Table 2 [see *Warnings and Precautions (5.2), (5.3)*].

**Table 2. Adverse Drug Reactions with Rates  $\geq$  1% Higher on Ivabradine than Placebo occurring in  $>$  1% on Ivabradine in SHIFT**

	<b>Ivabradine</b> <b>N = 3,260</b>	<b>Placebo</b> <b>N = 3,278</b>
--	---------------------------------------	------------------------------------

Bradycardia	10%	2.2%
Hypertension, blood pressure increased	8.9%	7.8%
Atrial fibrillation	8.3%	6.6%
Phosphenes, visual brightness	2.8%	0.5%

### Luminous Phenomena (Phosphenes)

Phosphenes are phenomena described as a transiently enhanced brightness in a limited area of the visual field, halos, image decomposition (stroboscopic or kaleidoscopic effects), colored bright lights, or multiple images (retinal persistency). Phosphenes are usually triggered by sudden variations in light intensity. Ivabradine can cause phosphenes, thought to be mediated through ivabradine's effects on retinal photoreceptors [see *Clinical Pharmacology (12.1)*]. Onset is generally within the first 2 months of treatment, after which they may occur repeatedly. Phosphenes were generally reported to be of mild to moderate intensity and led to treatment discontinuation in < 1% of patients; most resolved during or after treatment.

## **6.2 Postmarketing Experience**

Because these reactions are reported voluntarily from a population of uncertain size, it is not always possible to estimate their frequency reliably or establish a causal relationship to drug exposure.

The following adverse reactions have been identified in adults during post-approval use of ivabradine: syncope, hypotension, torsade de pointes, ventricular fibrillation, ventricular tachycardia, angioedema, erythema, rash, pruritus, urticaria, vertigo, and diplopia, and visual impairment.

## **7 DRUG INTERACTIONS**

### **7.1 Cytochrome P450-Based Interactions**

Ivabradine is primarily metabolized by CYP3A4. Concomitant use of CYP3A4 inhibitors increases ivabradine plasma concentrations and use of CYP3A4 inducers decreases them. Increased plasma concentrations may exacerbate bradycardia and conduction disturbances.

The concomitant use of strong CYP3A4 inhibitors is contraindicated [see *Contraindications (4) and Clinical Pharmacology (12.3)*]. Examples of strong CYP3A4 inhibitors include azole antifungals (e.g., itraconazole), macrolide antibiotics (e.g., clarithromycin, telithromycin), HIV protease inhibitors (e.g., nelfinavir), and nefazodone.

Avoid concomitant use of moderate CYP3A4 inhibitors when using ivabradine. Examples of moderate CYP3A4 inhibitors include diltiazem, verapamil, and grapefruit juice [see *Warnings and Precautions (5.3) and Clinical Pharmacology (12.3)*].

Avoid concomitant use of CYP3A4 inducers when using ivabradine. Examples of CYP3A4 inducers include St. John's wort, rifampicin, barbiturates, and phenytoin [see *Clinical Pharmacology (12.3)*].

### **7.2 Negative Chronotropes**

Most patients receiving ivabradine will also be treated with a beta-blocker. The risk of bradycardia increases with concomitant administration of drugs that slow heart rate (e.g., digoxin, amiodarone, beta-blockers). Monitor heart rate in patients taking ivabradine with other negative chronotropes.

### 7.3 Pacemakers in Adults

Ivabradine dosing is based on heart rate reduction, targeting a heart rate of 50 to 60 beats per minute in adults [see *Dosage and Administration (2.1)*]. Patients with demand pacemakers set to a rate  $\geq$  60 beats per minute cannot achieve a target heart rate  $<$  60 beats per minute, and these patients were excluded from clinical trials [see *Clinical Studies (14.1)*]. The use of ivabradine is not recommended in patients with demand pacemakers set to rates  $\geq$  60 beats per minute.

## 8 USE IN SPECIFIC POPULATIONS

### 8.1 Pregnancy

#### Risk Summary

Based on findings in animals, ivabradine may cause fetal harm when administered to a pregnant woman. There are no adequate and well-controlled studies of ivabradine in pregnant women to inform any drug-associated risks. In animal reproduction studies, oral administration of ivabradine to pregnant rats during organogenesis at a dosage providing 1 to 3 times the human exposure ( $AUC_{0-24hr}$ ) at the MRHD resulted in embryo-fetal toxicity and teratogenicity manifested as abnormal shape of the heart, interventricular septal defect, and complex anomalies of primary arteries. Increased post-natal mortality was associated with these teratogenic effects in rats. In pregnant rabbits, increased post-implantation loss was noted at an exposure ( $AUC_{0-24hr}$ ) 5 times the human exposure at the MRHD. Lower doses were not tested in rabbits. The background risk of major birth defects for the indicated population is unknown. The estimated background risk of major birth defects in the U.S. general population is 2 to 4%, however, and the estimated risk of miscarriage is 15 to 20% in clinically recognized pregnancies. Advise a pregnant woman of the potential risk to the fetus.

#### Clinical Considerations

##### *Disease-associated Maternal and/or Embryo-fetal Risk*

Stroke volume and heart rate increase during pregnancy, increasing cardiac output, especially during the first trimester. Pregnant patients with left ventricular ejection fraction less than 35% on maximally tolerated doses of beta-blockers may be particularly heart rate dependent for augmenting cardiac output. Therefore, pregnant patients who are started on ivabradine, especially during the first trimester, should be followed closely for destabilization of their congestive heart failure that could result from heart rate slowing.

Monitor pregnant women with chronic heart failure in 3<sup>rd</sup> trimester of pregnancy for preterm birth.

#### Data

##### *Animal Data*

In pregnant rats, oral administration of ivabradine during the period of organogenesis (gestation day 6 to 15) at doses of 2.3, 4.6, 9.3, or 19 mg/kg/day resulted in fetal toxicity and teratogenic effects. Increased intrauterine and post-natal mortality and cardiac malformations were observed at doses  $\geq$  2.3 mg/kg/day (equivalent to the human exposure at the MRHD based on  $AUC_{0-24hr}$ ). Teratogenic effects including interventricular septal defect and complex anomalies of major arteries were observed at doses  $\geq$  4.6 mg/kg/day (approximately 3 times the human exposure at the MRHD based on  $AUC_{0-24hr}$ ).

In pregnant rabbits, oral administration of ivabradine during the period of organogenesis (gestation day 6 to 18) at doses of 7, 14, or 28 mg/kg/day resulted in fetal toxicity and teratogenicity. Treatment with all doses  $\geq$  7 mg/kg/day (equivalent to the human exposure at the MRHD based on AUC<sub>0-24hr</sub>) caused an increase in post-implantation loss. At the high dose of 28 mg/kg/day (approximately 15 times the human exposure at the MRHD based on AUC<sub>0-24hr</sub>), reduced fetal and placental weights were observed, and evidence of teratogenicity (ectrodactylia observed in 2 of 148 fetuses from 2 of 18 litters) was demonstrated.

In the pre- and post-natal study, pregnant rats received oral administration of ivabradine at doses of 2.5, 7, or 20 mg/kg/day from gestation day 6 to lactation day 20. Increased post-natal mortality associated with cardiac teratogenic findings was observed in the F1 pups delivered by dams treated at the high dose (approximately 15 times the human exposure at the MRHD based on AUC<sub>0-24hr</sub>).

## **8.2 Lactation**

### Risk Summary

There is no information regarding the presence of ivabradine in human milk, the effects of ivabradine on the breastfed infant, or the effects of the drug on milk production. Animal studies have shown, however, that ivabradine is present in rat milk [see Data]. Because of the potential risk to breastfed infants from exposure to ivabradine, breastfeeding is not recommended.

### Data

Lactating rats received daily oral doses of [14C]-ivabradine (7 mg/kg) on post-parturition days 10 to 14; milk and maternal plasma were collected at 0.5 and 2.5 hours post-dose on day 14. The ratios of total radioactivity associated with [14C]-ivabradine or its metabolites in milk vs. plasma were 1.5 and 1.8, respectively, indicating that ivabradine is transferred to milk after oral administration.

## **8.3 Females and Males of Reproductive Potential**

### Contraception

#### *Females*

Ivabradine may cause fetal harm, based on animal data. Advise females of reproductive potential to use effective contraception during ivabradine treatment [see Use in Specific Populations (8.1)].

## **8.4 Pediatric Use**

The safety and efficacy of ivabradine have not been established in patients less than 6 months of age.

## **8.5 Geriatric Use**

No pharmacokinetic differences have been observed in elderly ( $\geq$  65 years) or very elderly ( $\geq$  75 years) patients compared to the overall population. However, ivabradine has only been studied in a limited number of patients  $\geq$  75 years of age.

## **8.6 Hepatic Impairment**

No dose adjustment is required in patients with mild or moderate hepatic impairment. Ivabradine is contraindicated in patients with severe hepatic impairment (Child-Pugh C) as it has not been studied in this population and an increase in systemic exposure is anticipated [see Contraindications (4) and Clinical Pharmacology (12.3)].

## **8.7 Renal Impairment**

No dosage adjustment is required for patients with creatinine clearance 15 to 60 mL/min. No data are available for patients with creatinine clearance below 15 mL/min [see *Clinical Pharmacology (12.3)*].

## 9 DRUG ABUSE AND DEPENDENCE

## 10 OVERDOSAGE

Overdose may lead to severe and prolonged bradycardia. In the event of bradycardia with poor hemodynamic tolerance, temporary cardiac pacing may be required. Supportive treatment, including intravenous (IV) fluids, atropine, and intravenous beta-stimulating agents such as isoproterenol, may be considered.

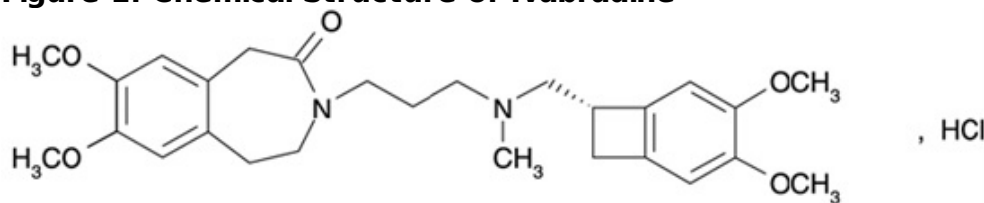
## 11 DESCRIPTION

Ivabradine tablets contain ivabradine as the active pharmaceutical ingredient. Ivabradine is a hyperpolarization-activated cyclic nucleotide-gated channel blocker that reduces the spontaneous pacemaker activity of the cardiac sinus node by selectively inhibiting the  $I_f$  current, resulting in heart rate reduction with no effect on ventricular repolarization and no effects on myocardial contractility.

The chemical name for ivabradine hydrochloride is

3-(3-(((7S)-3,4-Dimethoxybicyclo[4.2.0]octa-1,3,5-trien-7-yl)methyl) methyl amino) propyl)-1,3,4,5-tetrahydro-7,8-dimethoxy-2H-3-benzazepin-2-one, hydrochloride. The molecular formula is  $C_{27}H_{36}N_2O_5 \cdot HCl$ , and the molecular weight (free base + HCl) is 505.1 (468.6 + 36.5). The chemical structure of ivabradine is shown in Figure 1.

**Figure 1. Chemical Structure of Ivabradine**



Ivabradine tablets are formulated as light salmon to salmon colored, film-coated tablets for oral administration in strengths of 5 mg and 7.5 mg of ivabradine, equivalent to 5.39 mg and 8.09 mg of ivabradine hydrochloride respectively. The tablets contain the following inactive ingredients: maltodextrin, lactose anhydrous, butylated hydroxyanisole, butylated hydroxytoluene, hypromellose 2910, colloidal silicon dioxide, magnesium stearate, hydroxypropyl cellulose, titanium dioxide, polyethylene glycol 6000, iron oxide yellow and iron oxide red.

## 12 CLINICAL PHARMACOLOGY

### 12.1 Mechanism of Action

Ivabradine blocks the hyperpolarization-activated cyclic nucleotide-gated (HCN) channel responsible for the cardiac pacemaker  $I_f$  current, which regulates heart rate. In clinical electrophysiology studies, the cardiac effects were most pronounced in the sinoatrial (SA) node, but prolongation of the AH interval has occurred as has PR interval prolongation. There was no effect on ventricular repolarization and no effects on myocardial contractility [see *Clinical Pharmacology (12.2)*].

Ivabradine can also inhibit the retinal current  $I_h$ .  $I_h$  is involved in curtailing retinal responses to bright light stimuli. Under triggering circumstances (e.g., rapid changes in



luminosity), partial inhibition of  $I_h$  by ivabradine may underlie the luminous phenomena experienced by patients. Luminous phenomena (phosphenes) are described as a transient enhanced brightness in a limited area of the visual field [see *Adverse Reactions (6.1)*].

## 12.2 Pharmacodynamics

Ivabradine causes a dose-dependent reduction in heart rate. The size of the effect is dependent on the baseline heart rate (i.e., greater heart rate reduction occurs in patients with higher baseline heart rate). At recommended doses, heart rate reduction is approximately 10 bpm at rest and during exercise. Analysis of heart rate reduction vs. dose indicates a plateau effect at doses > 20 mg twice daily. In a study of patients with preexisting conduction system disease (first- or second-degree AV block or left or right bundle branch block) requiring electrophysiologic study, IV ivabradine (0.2 mg/kg) administration slowed the overall heart rate by approximately 15 bpm, increased the PR interval (29 msec), and increased the AH interval (27 msec).

Ivabradine does not have negative inotropic effects. Ivabradine increases the uncorrected QT interval with heart rate slowing but does not cause rate-corrected prolongation of QT.

## 12.3 Pharmacokinetics

The peak concentration ( $C_{max}$ ) and area under the plasma concentration time curve (AUC) are similar for ivabradine and S 18982 between oral solution and tablets for the same dose.

### Absorption and Bioavailability

Following oral administration, peak plasma ivabradine concentrations are reached in approximately 1 hour under fasting conditions. The absolute oral bioavailability of ivabradine is approximately 40% because of first-pass elimination in the gut and liver.

Food delays absorption by approximately 1 hour and increases plasma exposure by 20% to 40%. Ivabradine should be taken with food [see *Dosage and Administration (2)*].

Ivabradine is approximately 70% plasma protein bound, and the volume of distribution at steady state is approximately 100 L.

### Metabolism and Excretion

The pharmacokinetics of ivabradine are linear over an oral dose range of 0.5 mg to 24 mg. Ivabradine is extensively metabolized in the liver and intestines by CYP3A4-mediated oxidation. The major metabolite is the N-desmethylated derivative (S 18982), which is equipotent to ivabradine and circulates at concentrations approximately 40% that of ivabradine. The N-desmethylated derivative is also metabolized by CYP3A4. Ivabradine plasma levels decline with a distribution half-life of 2 hours and an effective half-life of approximately 6 hours.

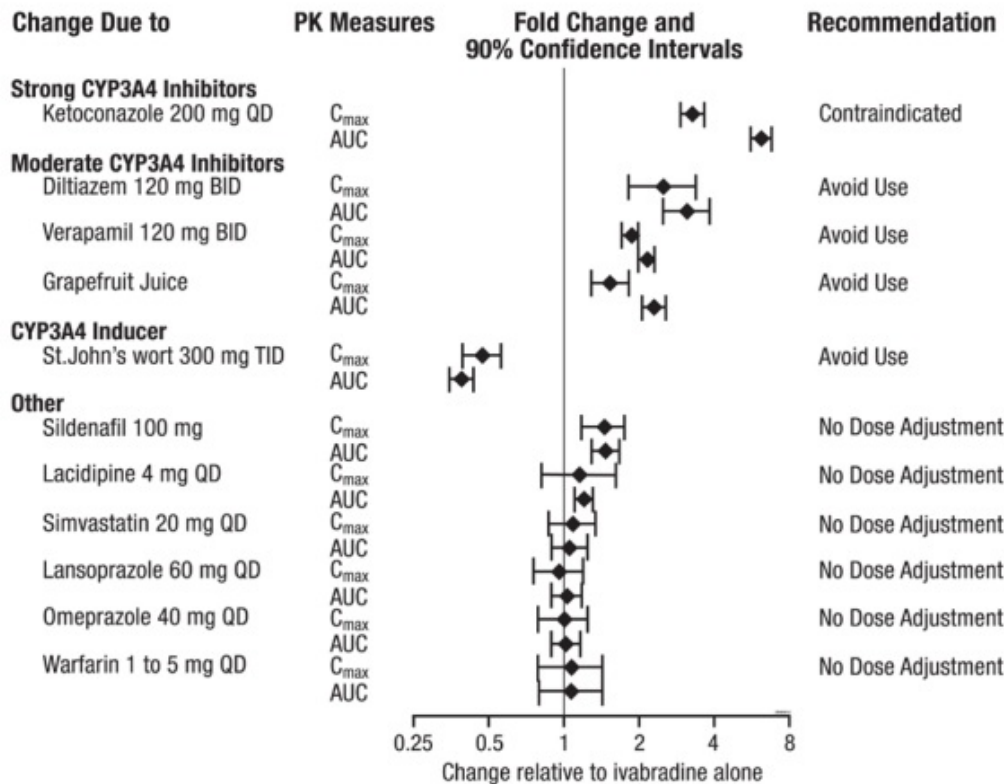
The total clearance of ivabradine is 24 L/h, and renal clearance is approximately 4.2 L/h, with ~ 4% of an oral dose excreted unchanged in urine. The excretion of metabolites occurs to a similar extent via feces and urine.

### Drug Interactions

The effects of coadministered drugs (CYP3A4 inhibitors, substrates, inducers, and other

concomitantly administered drugs) on the pharmacokinetics of ivabradine were studied in several single- and multiple-dose studies. Pharmacokinetic measures indicating the magnitude of these interactions are presented in Figure 2.

**Figure 2. Impact of Coadministered Drugs on the Pharmacokinetics of Ivabradine**



Digoxin exposure did not change when concomitantly administered with ivabradine. No dose adjustment is required when ivabradine is concomitantly administered with digoxin.

#### Effect of Ivabradine on Metformin Pharmacokinetics

Ivabradine, dosed at 10 mg twice daily to steady state, did not affect the pharmacokinetics of metformin (an organic cation transporter [OCT2] sensitive substrate). The geometric mean (90% confidence interval [CI]) ratios of  $C_{max}$  and  $AUC_{inf}$  of metformin, with and without ivabradine were 0.98 [0.83 to 1.15] and 1.02 [0.86 to 1.22], respectively. No dose adjustment is required for metformin when administered with ivabradine.

#### Specific Populations

##### *Age*

No pharmacokinetic differences (AUC or  $C_{max}$ ) have been observed between elderly ( $\geq 65$  years) or very elderly ( $\geq 75$  years) patients and the overall patient population [see *Use in Specific Populations (8.5)*].

##### *Hepatic Impairment*

In patients with mild (Child-Pugh A) and moderate (Child-Pugh B) hepatic impairment, the pharmacokinetics of ivabradine were similar to that in patients with normal hepatic function. No data are available in patients with severe hepatic impairment (Child-Pugh C) [see *Contraindications (4)*].

#### *Renal Impairment*

Renal impairment (creatinine clearance from 15 to 60 mL/min) has minimal effect on the pharmacokinetics of ivabradine. No data are available for patients with creatinine clearance below 15 mL/min.

### **13 NONCLINICAL TOXICOLOGY**

#### **13.1 Carcinogenesis, Mutagenesis, Impairment of Fertility**

There was no evidence of carcinogenicity when mice and rats received ivabradine up to 104 weeks by dietary administration. High doses in these studies were associated with mean ivabradine exposures of at least 37 times higher than the human exposure ( $AUC_{0-24hr}$ ) at the MRHD.

Ivabradine tested negative in the following assays: bacterial reverse mutation (Ames) assay, *in vivo* bone marrow micronucleus assay in both mouse and rat, *in vivo* chromosomal aberration assay in rats, and *in vivo* unscheduled DNA synthesis assay in rats. Results of the *in vitro* chromosomal aberration assay were equivocal at concentrations approximately 1,500 times the human  $C_{max}$  at the MRHD. Ivabradine tested positive in the mouse lymphoma assays and *in vitro* unscheduled DNA synthesis assay in rat hepatocytes at concentrations greater than 1,500 times the human  $C_{max}$  at the MRHD.

Reproduction toxicity studies in animals demonstrated that ivabradine did not affect fertility in male or female rats at exposures 46 to 133 times the human exposure ( $AUC_{0-24hr}$ ) at the MRHD.

#### **13.2 Animal Toxicology and/or Pharmacology**

Reversible changes in retinal function were observed in dogs administered oral ivabradine at total doses of 2, 7, or 24 mg/kg/day (approximately 0.6 to 50 times the human exposure at the MRHD based on  $AUC_{0-24hr}$ ) for 52 weeks. Retinal function assessed by electroretinography demonstrated reductions in cone system responses, which reversed within a week post-dosing, and were not associated with damage to ocular structures as evaluated by light microscopy. These data are consistent with the pharmacological effect of ivabradine related to its interaction with hyperpolarization-activated  $I_h$  currents in the retina, which share homology with the cardiac pacemaker  $I_f$  current.

### **14 CLINICAL STUDIES**

#### **14.1 Heart Failure in Adult Patients**

##### SHIFT

The Systolic Heart Failure Treatment with the  $I_f$  Inhibitor Ivabradine Trial (SHIFT) was a randomized, double-blind trial comparing ivabradine and placebo in 6,558 adult patients with stable New York Heart Association (NYHA) class II to IV heart failure, left ventricular ejection fraction  $\leq 35\%$ , and resting heart rate  $\geq 70$  bpm. Patients had to have been clinically stable for at least 4 weeks on an optimized and stable clinical regimen, which

included maximally tolerated doses of beta-blockers and, in most cases, ACE inhibitors or ARBs, spironolactone, and diuretics, with fluid retention and symptoms of congestion minimized. Patients had to have been hospitalized for heart failure within 12 months prior to study entry.

The underlying cause of CHF was coronary artery disease in 68% of patients. At baseline, approximately 49% of randomized patients were NYHA class II, 50% were NYHA class III, and 2% were NYHA class IV. The mean left ventricular ejection fraction was 29%. All patients were initiated on ivabradine 5 mg (or matching placebo) twice daily and the dose was increased to 7.5 mg twice daily or decreased to 2.5 mg twice daily to maintain the resting heart rate between 50 and 60 bpm, as tolerated. The primary endpoint was a composite of the first occurrence of either hospitalization for worsening heart failure or cardiovascular death.

Most patients (89%) were taking beta-blockers, with 26% on guideline-defined target daily doses. The main reasons for not receiving the target beta-blocker doses at baseline were hypotension (45% of patients not at target), fatigue (32%), dyspnea (14%), dizziness (12%), history of cardiac decompensation (9%), and bradycardia (6%). For the 11% of patients not receiving any beta-blocker at baseline, the main reasons were chronic obstructive pulmonary disease, hypotension, and asthma. Most patients were also taking ACE inhibitors and/or angiotensin II antagonists (91%), diuretics (83%), and anti-aldosterone agents (60%). Few patients had an implantable cardioverter-defibrillator (ICD) (3.2%) or a cardiac resynchronization therapy (CRT) device (1.1%). Median follow-up was 22.9 months. At 1 month, 63%, 26%, and 8% of ivabradine -treated patients were taking 7.5, 5, and 2.5 mg BID, whereas 3% had withdrawn from the drug, primarily for bradycardia.

SHIFT demonstrated that ivabradine reduced the risk of the combined endpoint of hospitalization for worsening heart failure or cardiovascular death based on a time-to-event analysis (hazard ratio: 0.82, 95% confidence interval [CI]: 0.75, 0.9,  $p < 0.0001$ ) (Table 3). The treatment effect reflected only a reduction in the risk of hospitalization for worsening heart failure; there was no favorable effect on the mortality component of the primary endpoint. In the overall treatment population, ivabradine had no statistically significant benefit on cardiovascular death.

**Table 3. SHIFT - Incidence of the Primary Composite Endpoint and Components**

Endpoint	Ivabradine (N = 3,241)			Placebo (N = 3,264)			Hazard Ratio	[95% CI]	p-value
	n	%	% PY	n	%	% PY			
Primary composite endpoint: Time to first hospitalization for worsening heart failure or cardiovascular	793	24.5	14.5	937	28.7	17.7	0.82	[0.75, 0.9]	< 0.0001

death <sup>a</sup>									
Hospitalization for worsening heart failure	505	15.6	9.2	660	20.2	12.5			
Cardiovascular death as first event	288	8.9	4.8	277	8.5	4.7			
Patients with events at any time									
Hospitalization for worsening heart failure <sup>b</sup>	514	15.9	9.4	672	20.6	12.7	0.74	[0.66, 0.83]	
Cardiovascular death <sup>b</sup>	449	13.9	7.5	491	15	8.3	0.91	[0.8, 1.03]	

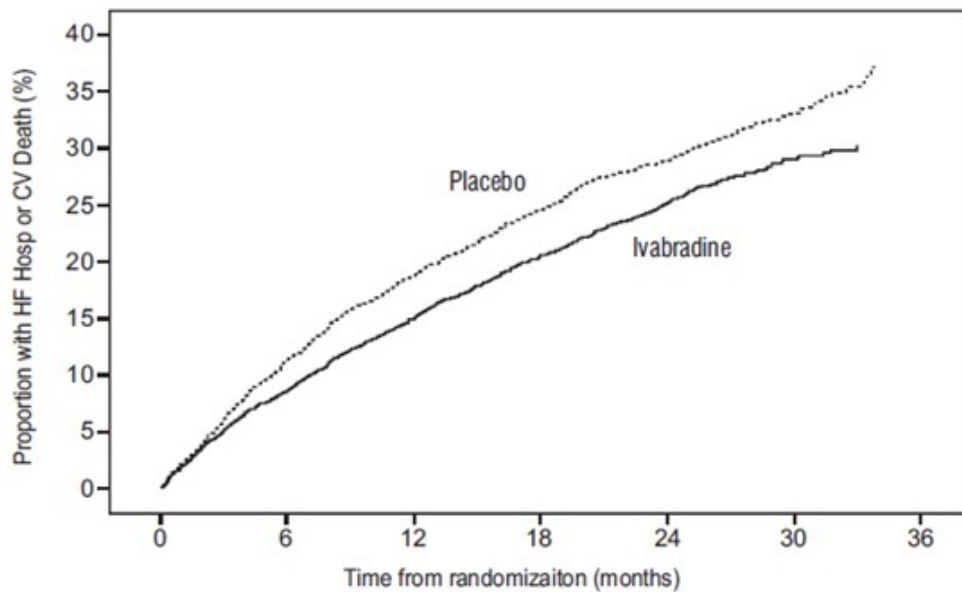
<sup>a</sup> Patients who died on the same calendar day as their first hospitalization for worsening heart failure are counted under cardiovascular death.

<sup>b</sup> Analyses of the components of the primary composite endpoint were not prospectively planned to be adjusted for multiplicity.

N: number of patients at risk; n: number of patients having experienced the endpoint; %: incidence rate =  $(n/N) \times 100$ ; % PY: annual incidence rate =  $(n/\text{number of patient-years}) \times 100$ ; CI: confidence interval The hazard ratio between treatment groups (ivabradine/placebo) was estimated based on an adjusted Cox proportional hazards model with beta-blocker intake at randomization (yes/no) as a covariate; p-value: Wald test

The Kaplan-Meier curve (Figure 3) shows time to first occurrence of the primary composite endpoint of hospitalization for worsening heart failure or cardiovascular death in the overall study.

**Figure 3. SHIFT: Time to First Event of Primary Composite Endpoint**



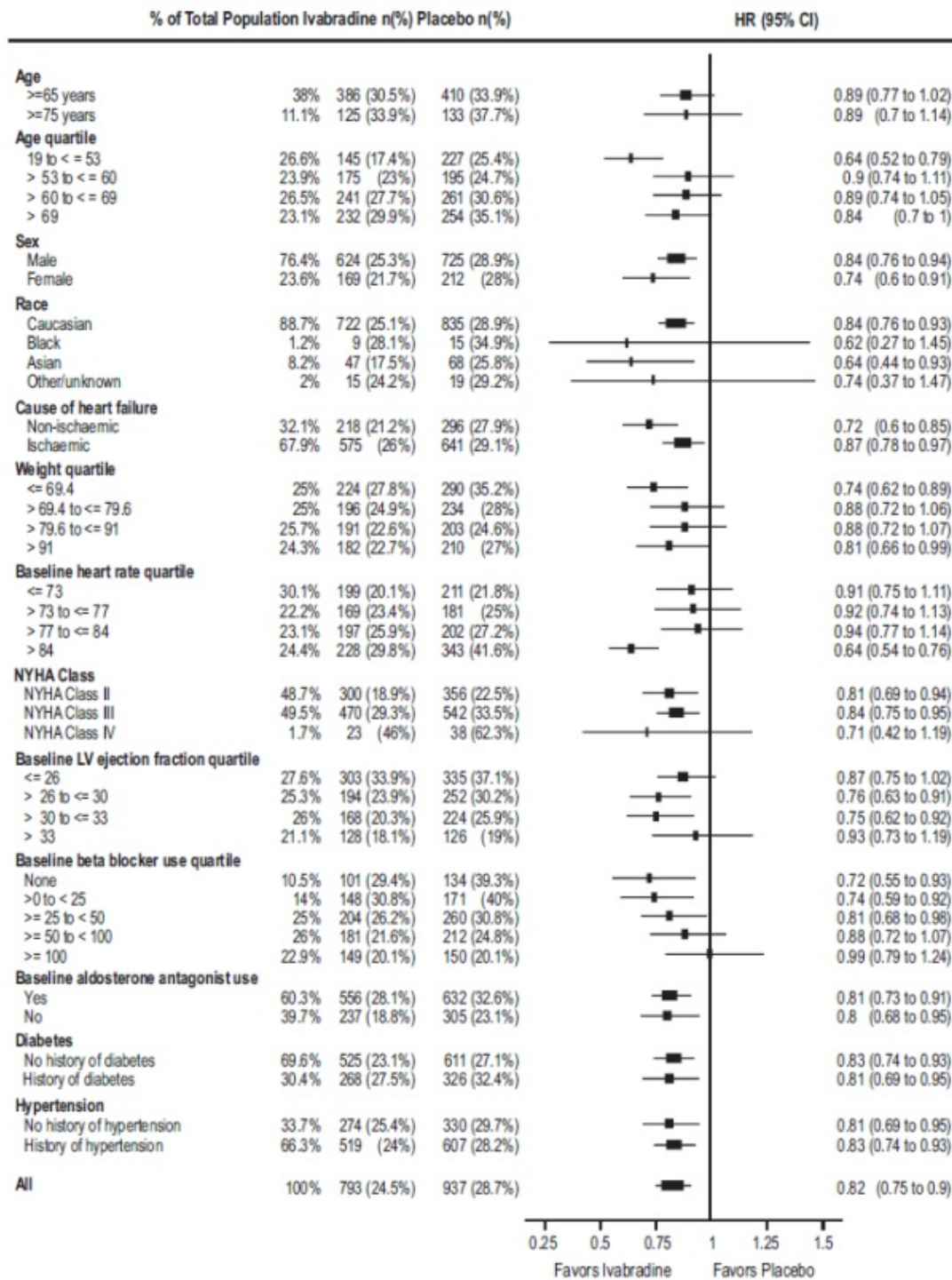
Number of Subjects at Risk:

Placebo	3264	2868	2489	2061	1089	439	17
Ivabradine	3241	2928	2600	2173	1191	447	16

A wide range of demographic characteristics, baseline disease characteristics, and baseline concomitant medications were examined for their influence on outcomes. Many of these results are shown in Figure 4. Such analyses must be interpreted cautiously, as differences can reflect the play of chance among a large number of analyses.

Most of the results show effects consistent with the overall study result. Ivabradine's benefit on the primary endpoint in SHIFT appeared to decrease as the dose of beta-blockers increased, with little if any benefit demonstrated in patients taking guideline-defined target doses of beta-blockers.

**Figure 4. Effect of Treatment on Primary Composite Endpoint in Subgroups**



Note: The figure above presents effects in various subgroups, all of which are baseline characteristics.

The 95% confidence limits that are shown do not take into account the number of comparisons made and may not reflect the effect of a particular factor after adjustment for all other factors. Apparent homogeneity or heterogeneity among groups should not be over-interpreted.

### BEAUTIFUL and SIGNIFY: No benefit in stable coronary artery disease with or without stable heart failure

The Morbidity-mortality Evaluation of the I<sub>f</sub> Inhibitor Ivabradine in Patients with Coronary

Disease and Left Ventricular Dysfunction Trial (BEAUTIFUL) was a randomized, double-blind, placebo-controlled trial in 10,917 adult patients with coronary artery disease, impaired left ventricular systolic function (ejection fraction < 40%) and resting heart rate  $\geq$  60 bpm. Patients had stable symptoms of heart failure and/or angina for at least 3 months and were receiving conventional cardiovascular medications at stable doses for at least 1 month. Beta-blocker therapy was not required, nor was there a protocol mandate to achieve any specific dosing targets for patients who were taking beta-blockers. Patients were randomized 1:1 to ivabradine or placebo at an initial dose of 5 mg twice daily with the dose increased to 7.5 mg twice daily depending on resting heart rate and tolerability. The primary endpoint was the composite of time to first cardiovascular death, hospitalization for acute myocardial infarction, or hospitalization for new-onset or worsening heart failure. Most patients were NYHA class II (61.4%) or class III (23.2%) -none were class IV. Through a median follow-up of 19 months, ivabradine did not significantly affect the primary composite endpoint (HR 1, 95% CI = 0.91, 1.1).

The Study Assessing the Morbidity Benefits of the I<sub>f</sub> Inhibitor Ivabradine in Patients with Coronary Artery Disease Trial (SIGNIFY) was a randomized, double-blind trial administering ivabradine or placebo to 19,102 adult patients with stable coronary artery disease but without clinically evident heart failure (NYHA class I). Beta-blocker therapy was not required. Ivabradine was initiated at a dose of 7.5 mg twice daily and the dose could be increased to as high as 10 mg twice daily or down-titrated to 5.0 mg twice daily to achieve a target heart rate of 55 to 60 bpm. The primary endpoint was a composite of the first occurrence of either cardiovascular death or myocardial infarction. Through a median follow-up of 24.1 months, ivabradine did not significantly affect the primary composite endpoint (HR 1.08, 95% CI = 0.96, 1.2).

## **16 HOW SUPPLIED/STORAGE AND HANDLING**

Ivabradine tablets 5 mg having functional scoring are light salmon to salmon-colored, oval-shaped, film-coated tablets scored on both edges, debossed with 'A', score and '7' on one face and plain on the other face. They are supplied as follows:

Bottle of 60 tablets with child resistant closure, NDC 62332-679-60

Bottle of 180 tablets with child resistant closure, NDC 62332-679-45

Ivabradine tablets 7.5 mg are light salmon to salmon-colored, triangular-shaped, film-coated tablets debossed with '662' on one face and 'L' on the other face. They are supplied as follows:

Bottle of 60 tablets with child resistant closure, NDC 62332-680-60

Bottle of 180 tablets with child resistant closure, NDC 62332-680-45

### Storage

Store ivabradine tablets at 25°C (77°F); excursions permitted to 15° to 30°C (59° to 86°F) [see USP Controlled Room Temperature].

## **17 PATIENT COUNSELING INFORMATION**

Advise the patient to read the FDA-approved patient labeling [see *Medication Guide and Instructions for Use*].

- Fetal Toxicity

Advise pregnant women of the potential risks to a fetus.



Advise females of reproductive potential to use effective contraception and to notify their healthcare provider with a known or suspected pregnancy [see *Warnings and Precautions (5.1) and Use in Specific Populations (8.1), (8.3)*].

- Low Heart Rate

Advise patients to report significant decreases in heart rate or symptoms such as dizziness, fatigue, or hypotension [see *Warnings and Precautions (5.3)*].

- Atrial Fibrillation

Advise patients to report symptoms of atrial fibrillation, such as heart palpitations or racing, chest pressure, or worsened shortness of breath [see *Warnings and Precautions (5.2)*].

- Phosphenes

Advise patients about the possible occurrence of luminous phenomena (phosphenes). Advise patients to use caution if they are driving or using machines in situations where sudden changes in light intensity may occur, especially when driving at night. Advise patients that phosphenes may subside spontaneously during continued treatment with ivabradine tablets [see *Adverse Reactions (6.1)*].

- Drug Interactions

Advise patients to avoid ingestion of grapefruit juice and St. John's wort [see *Drug Interactions (7.1)*].

- Intake with Food

Advise patients to take ivabradine tablets twice daily with food [see *Dosage and Administration (2)*].

Medication Guide available at <https://www.alembicusa.com/medicationguide.aspx> or call 1-866-210-9797.

Manufactured by:

**Alembic Pharmaceuticals Limited**

(Formulation Division),

Panelav 389350, Gujarat, India

Manufactured for:

**Alembic Pharmaceuticals, Inc.**

Bedminster, NJ 07921, USA

Revised: 09/2024

**MEDICATION GUIDE**

**Ivabradine(eye-VAB-ra-deen)**

**Tablets**

**What is the most important information I should know about ivabradine tablets?**

**Ivabradine tablets may cause serious side effects in adults, including:**

- **Harm to an unborn baby.** Females who are able to get pregnant:
  - o Must use effective birth control during treatment with ivabradine tablets.
  - o Tell your doctor right away if you become pregnant during treatment with ivabradine.

• **Increased risk of irregular or rapid heartbeat (atrial fibrillation or heart rhythm problems).** Tell your doctor if you feel any of the following symptoms of an irregular or rapid heartbeat:

- o heart is pounding or racing (palpitations).
- o chest pressure.
- o worsened shortness of breath.
- o near fainting or fainting.

• **Slower than normal heart rate (bradycardia).** Tell your doctor if you have:

- o a slowing of heart rate, **or**

o symptoms of a slow heart rate such as dizziness, fatigue, lack of energy. In young children signs and symptoms of slow heart rate may include: poor feeding, difficulty breathing or turning blue.

### **What are ivabradine tablets?**

Ivabradine tablets are prescription medicine used:

• to treat adults who have chronic (lasting a long time) heart failure, with symptoms, to reduce their risk of hospitalization for worsening heart failure.

### **Who should not take ivabradine tablets?**

**Do not** take ivabradine tablets if you have:

- symptoms of heart failure that recently worsened
- very low blood pressure (hypotension)
- certain heart conditions: sick sinus syndrome, sinoatrial block, or 3<sup>rd</sup> degree atrioventricular block
- a slow resting heart rate before treatment with ivabradine tablets. Ask your doctor what a slow resting heart rate is for you.
- certain liver problems
- been prescribed any medicines that can increase the effects of ivabradine tablets.

Ask your doctor if you are not sure if you have any of the medical conditions listed above.

### **What should I tell my doctor before taking ivabradine tablets?**

**Before you take ivabradine tablets, tell your doctor about all of your medical conditions, including if you:**

- have any other heart problems, including heart rhythm problems, a slow heart rate, or a heart conduction problem.
- are breastfeeding or planning to breastfeed. It is not known if ivabradine passes into breast milk. You and your doctor should decide if you will take ivabradine tablets or breastfeed; do not do both.
- are pregnant or planning to become pregnant. **See “What is the most important information I should know about ivabradine tablets? -Harm to an unborn baby” section.**

**I should know about ivabradine tablets? -Harm to an unborn baby” section.**

Tell your doctor about all the medicines you take, including prescription and over the counter medicines, vitamins, and herbal supplements. Ivabradine tablets may affect the way other medicines work, and other medicines may affect how ivabradine tablets works. This could cause serious side effects.

### **How should you take ivabradine tablets?**

- Take ivabradine tablets exactly as your doctor tells you.
- **Do not** stop taking ivabradine tablets without talking with your doctor.
- Ivabradine comes as a tablet.
  - o Tell your doctor if you have trouble swallowing tablets.
  - o Your doctor may change your dose of ivabradine tablets during treatment
- Take ivabradine tablets 2 times each day with food.
- If you miss a dose of ivabradine tablets, **do not** give another dose. Give the next dose at the usual time.
- If you take too much ivabradine tablets, call your doctor or go to the nearest emergency room right away.

### **What should you avoid while taking ivabradine tablets?**

• Avoid drinking grapefruit juice and taking St. John’s wort during treatment with ivabradine tablets. These can affect the way ivabradine tablets works and may cause serious side effects.

### **What are the possible side effects of ivabradine tablets?**

**Ivabradine tablets may cause serious side effects. See “What is the most important information I should know about ivabradine tablets?”**

The most common side effects of ivabradine tablets are:

- increased blood pressure
- temporary brightness in part of your field of vision. This is usually caused by sudden changes in

light (luminous phenomena). This brightness usually happens within the first 2 months of treatment with ivabradine tablets and may go away during or after treatment with ivabradine tablets. Be careful when driving or operating machinery where sudden changes in light can happen, especially when driving at night.

These are not all the side effects of ivabradine tablets. Ask your doctor or pharmacist for more information.

Call your doctor for medical advice about side effects. You may report side effects to FDA at 1-800-FDA-1088.

#### **How should I store Ivabradine tablets?**

- Store ivabradine tablets at room temperature between 68°F to 77°F (20°C to 25°C).
- Ivabradine tablets come in a child-resistant package.

#### **Keep ivabradine tablets and all medicines out of the reach of children.**

#### **General information about the safe and effective use of ivabradine tablets.**

Medicines are sometimes prescribed for purposes other than those listed in a Medication Guide. Do not use ivabradine tablets for a condition for which it was not prescribed. Do not give ivabradine tablets to other people, even if they have the same symptoms that you have. It may harm them. You can ask your doctor or pharmacist for information about ivabradine tablets that is written for health professionals.

#### **What are the ingredients in ivabradine tablets?**

**Active ingredient:** ivabradine

**Inactive ingredients:**

**Tablet:** maltodextrin, lactose anhydrous, butylated hydroxyanisole, butylated hydroxytoluene, hypromellose 2910, colloidal silicon dioxide, magnesium stearate, hydroxypropyl cellulose, titanium dioxide, polyethylene glycol 6000, iron oxide yellow and iron oxide red.

Medication Guide available at <https://www.alembicusa.com/medicationguide.aspx> or call 1-866-210-9797.

Manufactured by:

**Alembic Pharmaceuticals Limited**

(Formulation Division),

Panelav 389350, Gujarat, India

Manufactured for:

**Alembic Pharmaceuticals, Inc.**

Bedminster, NJ 07921, USA

For more information call Alembic Pharmaceuticals Limited at 1-866-210-9797.

This Medication Guide has been approved by the U.S. Food and Drug Administration. Revised: 09/2024

#### **PACKAGE LABEL.PRINCIPAL DISPLAY PANEL - 5 mg**

**NDC 62332-679-60**

**Ivabradine Tablets**

**5 mg**

**PHARMACIST: Dispense the accompanying Medication Guide to each patient.**

**Rx only**

**60 Film-coated tablets**

**Alembic**

Each film-coated tablet contains 5 mg ivabradine equivalent to 5.39 mg ivabradine as hydrochloride.

Oral Use.  
Store at 25°C (77°F); excursions permitted to 15° to 30°C (59° to 86°F) [see USP Controlled Room Temperature]. This package is child-resistant.

Manufactured by:  
**Alembic Pharmaceuticals Limited** (Formulation Division),  
Panelav 389350, Gujarat, India  
Manufactured for:  
**Alembic Pharmaceuticals, Inc.**  
Bedminster, NJ 07921, USA

**NDC 62332-679-60**  
**Ivabradine Tablets**  
**5 mg**

**PHARMACIST:** Dispense the accompanying Medication Guide to each patient.  
**Rx only 60 Film-coated tablets**



Keep out of the sight and reach of children.  
**Usual Dose:** See package insert for dosage  
Medication Guide available at <https://www.alembicusa.com/medicationguide.aspx> or call 1-866-210-9797.  
Mfg. Lic. No. G25959 20030353 09/2024



3 62332-679-60 7  
GTIN: 00362332679607  
SN/EXP./LOT

**Coding Area  
NOT TO BE  
PRINTED  
28x30mm**

**PACKAGE LABEL.PRINCIPAL DISPLAY PANEL - 7.5 mg**

**NDC 62332-680-60**  
**Ivabradine Tablets**  
**7.5 mg**  
**PHARMACIST:** Dispense the accompanying Medication Guide to each patient.  
**Rx only**  
**60 Film-coated tablets**  
**Alembic**

Each film-coated tablet contains 7.5 mg ivabradine equivalent to 8.085 mg ivabradine as hydrochloride.

Oral Use.  
Store at 25°C (77°F); excursions permitted to 15° to 30°C (59° to 86°F) [see USP Controlled Room Temperature]. This package is child-resistant.

Manufactured by:  
**Alembic Pharmaceuticals Limited** (Formulation Division),  
Panelav 389350, Gujarat, India  
Manufactured for:  
**Alembic Pharmaceuticals, Inc.**  
Bedminster, NJ 07921, USA

**NDC 62332-680-60**  
**Ivabradine Tablets**  
**7.5 mg**

**PHARMACIST:** Dispense the accompanying Medication Guide to each patient.  
**Rx only 60 Film-coated tablets**



Keep out of the sight and reach of children.  
**Usual Dose:** See package insert for dosage  
Medication Guide available at <https://www.alembicusa.com/medicationguide.aspx> or call 1-866-210-9797.  
Mfg. Lic. No. G25959 20030355 09/2024



3 62332-680-60 3  
GTIN: 00362332680603  
SN/EXP./LOT

**Coding Area  
NOT TO BE  
PRINTED  
28x30mm**

<b>IVABRADINE</b>			
ivabradine tablet, film coated			
<b>Product Information</b>			
<b>Product Type</b>	HUMAN PRESCRIPTION DRUG	<b>Item Code (Source)</b>	NDC:62332-679
<b>Route of Administration</b>	ORAL		
<b>Active Ingredient/Active Moiety</b>			
Ingredient Name		Basis of Strength	Strength
IVABRADINE HYDROCHLORIDE (UNII: TP19837BZK) (IVABRADINE - UNII:3H48L0LPZQ)		IVABRADINE	5 mg
<b>Inactive Ingredients</b>			
Ingredient Name			Strength
MALTODEXTRIN (UNII: 7CVR7L4A2D)			
ANHYDROUS LACTOSE (UNII: 3SY5LH9PMK)			
BUTYLATED HYDROXYANISOLE (UNII: REK4960K2U)			
BUTYLATED HYDROXYTOLUENE (UNII: 1P9D0Z171K)			
HYPROMELLOSE 2910 (6 MPA.S) (UNII: 0WZ8WG20P6)			

<b>SILICON DIOXIDE</b> (UNII: ETJ7Z6XBU4)				
<b>MAGNESIUM STEARATE</b> (UNII: 70097M6I30)				
<b>HYDROXYPROPYL CELLULOSE</b> (UNII: RFW2ET671P)				
<b>TITANIUM DIOXIDE</b> (UNII: 15FIX9V2JP)				
<b>POLYETHYLENE GLYCOL 6000</b> (UNII: 30IQX730WE)				
<b>FERRIC OXIDE YELLOW</b> (UNII: EX438O2MRT)				
<b>FERRIC OXIDE RED</b> (UNII: 1K09F3G675)				
<b>Product Characteristics</b>				
<b>Color</b>	PINK (Light salmon to salmon)		<b>Score</b>	2 pieces
<b>Shape</b>	OVAL		<b>Size</b>	8mm
<b>Flavor</b>			<b>Imprint Code</b>	A7
<b>Contains</b>				
<b>Packaging</b>				
<b>#</b>	<b>Item Code</b>	<b>Package Description</b>	<b>Marketing Start Date</b>	<b>Marketing End Date</b>
1	NDC:62332-679-60	60 in 1 BOTTLE; Type 0: Not a Combination Product	12/20/2024	
2	NDC:62332-679-45	180 in 1 BOTTLE; Type 0: Not a Combination Product	12/20/2024	
<b>Marketing Information</b>				
<b>Marketing Category</b>	<b>Application Number or Monograph Citation</b>	<b>Marketing Start Date</b>	<b>Marketing End Date</b>	
ANDA	ANDA215238	12/20/2024		

<b>IVABRADINE</b>				
ivabradine tablet, film coated				
<b>Product Information</b>				
<b>Product Type</b>	HUMAN PRESCRIPTION DRUG	<b>Item Code (Source)</b>	NDC:62332-680	
<b>Route of Administration</b>	ORAL			
<b>Active Ingredient/Active Moiety</b>				
<b>Ingredient Name</b>		<b>Basis of Strength</b>	<b>Strength</b>	
IVABRADINE HYDROCHLORIDE (UNII: TP19837BZK) (IVABRADINE - UNII:3H48L0LPZQ)		IVABRADINE	7.5 mg	
<b>Inactive Ingredients</b>				
<b>Ingredient Name</b>			<b>Strength</b>	
MALTODEXTRIN (UNII: 7CVR7L4A2D)				
ANHYDROUS LACTOSE (UNII: 3SY5LH9PMK)				
BUTYLATED HYDROXYANISOLE (UNII: REK4960K2U)				
BUTYLATED HYDROXYTOLUENE (UNII: 1P9D0Z171K)				
HYPROMELLOSE 2910 (6 MPA.S) (UNII: 0WZ8WG20P6)				
SILICON DIOXIDE (UNII: ETJ7Z6XBU4)				
MAGNESIUM STEARATE (UNII: 70097M6I30)				

HYDROXYPROPYL CELLULOSE (UNII: RFW2ET671P)

TITANIUM DIOXIDE (UNII: 15FIX9V2JP)

POLYETHYLENE GLYCOL 6000 (UNII: 30IQX730WE)

FERRIC OXIDE YELLOW (UNII: EX438O2MRT)

FERRIC OXIDE RED (UNII: 1K09F3G675)

### Product Characteristics

<b>Color</b>	PINK (Light salmon to salmon)	<b>Score</b>	no score
<b>Shape</b>	TRIANGLE	<b>Size</b>	7mm
<b>Flavor</b>		<b>Imprint Code</b>	662;L
<b>Contains</b>			

### Packaging

#	Item Code	Package Description	Marketing Start Date	Marketing End Date
1	NDC:62332-680-60	60 in 1 BOTTLE; Type 0: Not a Combination Product	12/20/2024	
2	NDC:62332-680-45	180 in 1 BOTTLE; Type 0: Not a Combination Product	12/20/2024	

### Marketing Information

Marketing Category	Application Number or Monograph Citation	Marketing Start Date	Marketing End Date
ANDA	ANDA215238	12/20/2024	

**Labeler** - Alembic Pharmaceuticals Inc. (079288842)

### Establishment

Name	Address	ID/FEI	Business Operations
Alembic Pharmaceuticals Limited		650574671	MANUFACTURE(62332-679, 62332-680)

Revised: 9/2024

Alembic Pharmaceuticals Inc.