

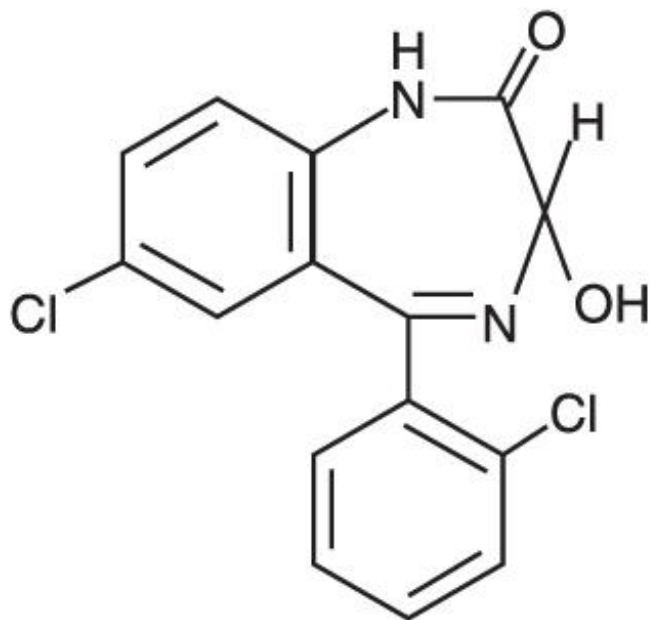
LORAZEPAM- lorazepam tablet
Contract Pharmacy Services-PA

Lorazepam Tablets, USP CIV 924 958 936

Rx only

DESCRIPTION

Lorazepam, an antianxiety agent, has the chemical formula, 7-chloro-5-(*o*-chlorophenyl)-1,3-dihydro-3-hydroxy-2*H*-1,4-benzodiazepin-2-one:



$C_{15}H_{10}Cl_2N_2O_2$ MW: 321.16

It is a nearly white powder almost insoluble in water. Each Lorazepam Tablet, to be taken orally, contains 0.5 mg, 1 mg, or 2 mg of lorazepam. The inactive ingredients present are Lactose Anhydrous, Microcrystalline Cellulose, Polacrillin Potassium and Magnesium Stearate.

CLINICAL PHARMACOLOGY

Studies in healthy volunteers show that in single high doses Lorazepam has a tranquilizing action on the central nervous system with no appreciable effect on the respiratory or cardiovascular systems.

Lorazepam is readily absorbed with an absolute bioavailability of 90 percent. Peak concentrations in plasma occur approximately 2 hours following administration. The peak plasma level of lorazepam from a 2 mg dose is approximately 20 ng/mL.

The mean half-life of unconjugated lorazepam in human plasma is about 12 hours and for its major metabolite, lorazepam glucuronide, about 18 hours. At clinically relevant concentrations, lorazepam is approximately 85% bound to plasma proteins. Lorazepam is rapidly conjugated at its 3-hydroxy group into lorazepam glucuronide which is then excreted in the urine. Lorazepam glucuronide has no demonstrable CNS activity in animals.

The plasma levels of lorazepam are proportional to the dose given. There is no evidence of accumulation of lorazepam on administration up to six months.

Studies comparing young and elderly subjects have shown that advancing age does not have a significant effect on the pharmacokinetics of lorazepam. However, in one study involving single intravenous doses of 1.5 to 3 mg of Lorazepam, mean total body clearance of lorazepam decreased by 20% in 15 elderly subjects of 60 to 84 years of age compared to that in 15 younger subjects 19 to 38 years of age.

INDICATIONS AND USAGE

Lorazepam is indicated for the management of anxiety disorders or for the short-term relief of the symptoms of anxiety or anxiety associated with depressive symptoms. Anxiety or tension associated with the stress of everyday life usually does not require treatment with an anxiolytic.

The effectiveness of Lorazepam in long-term use, that is, more than 4 months, has not been assessed by systematic clinical studies. The physician should periodically reassess the usefulness of the drug for the individual patient.

CONTRAINDICATIONS

Lorazepam is contraindicated in patients with

- hypersensitivity to benzodiazepines or to any components of the formulation.
- acute narrow-angle glaucoma.

WARNINGS

Pre-existing depression may emerge or worsen during use of benzodiazepines including lorazepam. Lorazepam is not recommended for use in patients with a primary depressive disorder or psychosis.

Use of benzodiazepines, including lorazepam, both used alone and in combination with other CNS depressants may lead to potentially fatal respiratory depression. (See **PRECAUTIONS, Clinically Significant Drug Interactions**)

Use of benzodiazepines, including lorazepam, may lead to physical and psychological dependence.

As with all patients on CNS-depressant drugs, patients receiving lorazepam should be warned not to operate dangerous machinery or motor vehicles and that their tolerance for alcohol and other CNS depressants will be diminished.

Physical and Psychological Dependence

The use of benzodiazepines, including lorazepam, may lead to physical and psychological dependence. The risk of dependence increases with higher doses and longer term use and is further increased in patients with a history of alcoholism or drug abuse or in patients with significant personality disorders. The dependence potential is reduced when lorazepam is used at the appropriate dose for short-term treatment. Addiction-prone individuals (such as drug addicts or alcoholics) should be under careful surveillance when receiving lorazepam or other psychotropic agents.

In general, benzodiazepines should be prescribed for short periods only (e.g. 2 to 4 weeks). Extension of the treatment period should not take place without reevaluation of the need for continued therapy. Continuous long-term use of the product is not recommended. Withdrawal symptoms (e.g. rebound insomnia) can appear following cessation of recommended doses after as little as one week of therapy. Abrupt discontinuation of product should be avoided and a gradual dosage-tapering schedule followed after extended therapy.

Abrupt termination of treatment may be accompanied by withdrawal symptoms. Symptoms reported following discontinuation of benzodiazepines include headache, anxiety, tension, depression, insomnia,

restlessness, confusion, irritability, sweating, rebound phenomena, dysphoria, dizziness, derealization, depersonalization, hyperacusis, numbness/tingling of extremities, hypersensitivity to light, noise, and physical contact/perceptual changes, involuntary movements, nausea, vomiting, diarrhea, loss of appetite, hallucinations/delirium, convulsions/seizures, tremor, abdominal cramps, myalgia, agitation, palpitations, tachycardia, panic attacks, vertigo, hyperreflexia, short-term memory loss, and hyperthermia. Convulsions/seizures may be more common in patients with pre-existing seizure disorders or who are taking other drugs that lower the convulsive threshold such as antidepressants.

There is evidence that tolerance develops to the sedative effects of benzodiazepines. Lorazepam may have abuse potential, especially in patients with a history of drug and/or alcohol abuse.

PRECAUTIONS

In patients with depression, a possibility for suicide should be borne in mind; benzodiazepines should not be used in such patients without adequate anti-depressant therapy.

Lorazepam should be used with caution in patients with compromised respiratory function (e.g. COPD, sleep apnea syndrome).

Elderly or debilitated patients may be more susceptible to the sedative effects of lorazepam. Therefore these patients should be monitored frequently and have their dosage adjusted carefully according to patient response; the initial dosage should not exceed 2 mg.

Paradoxical reactions have been occasionally reported during benzodiazepine use. Such reactions may be more likely to occur in children and the elderly. Should these occur, use of the drug should be discontinued.

The usual precautions for treating patients with impaired renal or hepatic function should be observed. As with all benzodiazepines, the use of lorazepam may worsen hepatic encephalopathy; therefore, lorazepam should be used with caution in patients with severe hepatic insufficiency and/or encephalopathy. Dosage for patients with severe hepatic insufficiency should be adjusted carefully according to patient response; lower doses may be sufficient in such patients.

In patients where gastrointestinal or cardiovascular disorders coexist with anxiety, it should be noted that lorazepam has not been shown to be of significant benefit in treating the gastrointestinal or cardiovascular component.

Esophageal dilation occurred in rats treated with lorazepam for more than one year at 6 mg/kg/day. The no-effect dose was 1.25 mg/kg/day (approximately 6 times the maximum human therapeutic dose of 10 mg per day). The effect was reversible only when the treatment was withdrawn within two months of first observation of the phenomenon. The clinical significance of this is unknown. However, use of lorazepam for prolonged periods and in geriatric patients requires caution, and there should be frequent monitoring for symptoms of upper G.I. disease.

Safety and effectiveness of Lorazepam in children of less than 12 years have not been established.

Information for Patients

To assure the safe and effective use of Lorazepam, patients should be informed that, since benzodiazepines may produce psychological and physical dependence, it is advisable that they consult with their physician before either increasing the dose or abruptly discontinuing this drug.

Essential Laboratory Tests

Some patients on Lorazepam have developed Leucopenia, and some have had elevations of LDH. As with other benzodiazepines, periodic blood counts and liver-function tests are recommended for patients on long-term therapy.

Clinically Significant Drug Interactions

The benzodiazepines, including Lorazepam, produce increased CNS-depressant effects when

administered with other CNS depressants such as alcohol, barbiturates, antipsychotics, sedative/hypnotics, anxiolytics, antidepressants, narcotic analgesics, sedative antihistamines, anticonvulsants, and anesthetics.

Concomitant use of clozapine and lorazepam may produce marked sedation, excessive salivation, hypotension, ataxia, delirium and respiratory arrest.

Concurrent administration of lorazepam with valproate may result in increased plasma concentrations and reduced clearance of lorazepam. Lorazepam dosage should be reduced to approximately 50% when coadministered with valproate.

Concurrent administration of lorazepam with probenecid may result in a more rapid onset or prolonged effect of lorazepam due to increased half-life and decreased total clearance. Lorazepam dosage needs to be reduced by approximately 50% when coadministered with probenecid.

The effects of probenecid and valproate on lorazepam may be due to inhibition of glucuronidation.

Administration of theophylline or aminophylline may reduce the sedative effects of benzodiazepines, including lorazepam.

Carcinogenesis and Mutagenesis

No evidence of carcinogenic potential emerged in rats during an 18-month study with Lorazepam. No studies regarding mutagenesis have been performed.

Pregnancy

Reproductive studies in animals were performed in mice, rats, and two strains of rabbits. Occasional anomalies (reduction of tarsals, tibia, metatarsals, malrotated limbs, gastroschisis, malformed skull, and microphthalmia) were seen in drug-treated rabbits without relationship to dosage. Although all of these anomalies were not present in the concurrent control group, they have been reported to occur randomly in historical controls. At doses of 40 mg/kg and higher, there was evidence of fetal resorption and increased fetal loss in rabbits which was not seen at lower doses.

The clinical significance of the above findings is not known. However, an increased risk of congenital malformations associated with the use of minor tranquilizers (chlordiazepoxide, diazepam, and meprobamate) during the first trimester of pregnancy has been suggested in several studies. Because the use of these drugs is rarely a matter of urgency, the use of lorazepam during this period should be avoided. The possibility that a woman of childbearing potential may be pregnant at the time of institution of therapy should be considered. Patients should be advised that if they become pregnant, they should communicate with their physician about the desirability of discontinuing the drug.

In humans, blood levels obtained from umbilical cord blood indicate placental transfer of lorazepam and lorazepam glucuronide. Infants of mothers who ingested benzodiazepines for several weeks or more preceding delivery have been reported to have withdrawal symptoms during the postnatal period. Symptoms such as hypoactivity, hypotonia, hypothermia, respiratory depression, apnea, feeding problems, and impaired metabolic response to cold stress have been reported in neonates born of mothers who have received benzodiazepines during the late phase of pregnancy or at delivery.

Nursing Mothers

Lorazepam has been detected in human breast milk; therefore, it should not be administered to breast-feeding women, unless the expected benefit to the woman outweighs the potential risk to the infant.

Sedation and inability to suckle have occurred in neonates of lactating mothers taking benzodiazepines. Infants of lactating mothers should be observed for pharmacological effects (including sedation and irritability).

Geriatric Use

Clinical studies of lorazepam generally were not adequate to determine whether subjects aged 65 and over respond differently than younger subjects; however, the incidence of sedation and unsteadiness

was observed to increase with age (see **ADVERSE REACTIONS**).

Age does not appear to have a significant effect on lorazepam kinetics (see **CLINICAL PHARMACOLOGY**).

Clinical circumstances, some of which may be more common in the elderly, such as hepatic or renal impairment, should be considered. Greater sensitivity (e.g. sedation) of some older individuals cannot be ruled out. In general, dose selection for an elderly patient should be cautious, and lower doses may be sufficient in these patients (see **DOSAGE AND ADMINISTRATION**).

ADVERSE REACTIONS

Most adverse reactions to benzodiazepines, including CNS effects and respiratory depression, are dose dependent, with more severe effects occurring with high doses.

In a sample of about 3500 patients treated for anxiety, the most frequent adverse reaction to lorazepam was sedation (15.9%), followed by dizziness (6.9%), weakness (4.2%), and unsteadiness (3.4%). The incidence of sedation and unsteadiness increased with age.

Other adverse reactions to benzodiazepines, including lorazepam are fatigue, drowsiness, amnesia, memory impairment, confusion, disorientation, depression, unmasking of depression, disinhibition, euphoria, suicidal ideation/attempt, ataxia, asthenia, extrapyramidal symptoms, convulsions/seizures, tremor, vertigo, eye-function/visual disturbance (including diplopia and blurred vision), dysarthria, slurred speech, change in libido, impotence, decreased orgasm; headache, coma; respiratory depression, apnea, worsening of sleep apnea, worsening of obstructive pulmonary disease; gastrointestinal symptoms including nausea, change in appetite, constipation, jaundice, increase in bilirubin, increase in liver transaminases, increase in alkaline phosphatase; hypersensitivity reactions, anaphylactic/oid reactions; dermatological symptoms, allergic skin reactions, alopecia; SIADH, hyponatremia, thrombocytopenia, agranulocytosis, pancytopenia; hypothermia; and autonomic manifestations.

Paradoxical reactions, including anxiety, excitation, agitation, hostility, aggression, rage, sleep disturbances/insomnia, sexual arousal, and hallucinations may occur. Small decreases in blood pressure and hypotension may occur but are usually not clinically significant, probably being related to the relief of anxiety produced by lorazepam.

OVERDOSAGE

In postmarketing experience, overdose with lorazepam has occurred predominantly in combination with alcohol and/or other drugs. Therefore, in the management of overdose, it should be borne in mind that multiple agents may have been taken.

Symptoms

Overdosage of benzodiazepines is usually manifested by varying degrees of central nervous system depression ranging from drowsiness to coma. In mild cases, symptoms include drowsiness, mental confusion, paradoxical reactions, dysarthria and lethargy. In more serious cases, and especially when other drugs or alcohol were ingested, symptoms may include ataxia, hypotonia, hypotension, cardiovascular depression, respiratory depression, hypnotic state, coma, and death.

Management

General supportive and symptomatic measures are recommended; vital signs must be monitored and the patient closely observed. When there is a risk of aspiration, induction of emesis is not recommended. Gastric lavage may be indicated if performed soon after ingestion or in symptomatic patients.

Administration of activated charcoal may also limit drug absorption. Hypotension, though unlikely, usually may be controlled with norepinephrine bitartrate injection. Lorazepam is poorly dialyzable. Lorazepam glucuronide, the inactive metabolite, may be highly dialyzable.

The benzodiazepine antagonist flumazenil may be used in hospitalized patients as an adjunct to, not as a substitute for, proper management of benzodiazepine overdose. **The prescriber should be aware of a risk of seizure in association with flumazenil treatment, particularly in long-term benzodiazepine users and in cyclic antidepressant overdose.** The complete flumazenil package insert including “CONTRAINDICATIONS”, “WARNINGS”, and “PRECAUTIONS” should be consulted prior to use.

DOSAGE AND ADMINISTRATION

Lorazepam Tablets, USP are administered orally. For optimal results, dose, frequency of administration, and duration of therapy should be individualized according to patient response. To facilitate this, 0.5 mg, 1 mg, and 2 mg tablets are available.

The usual range is 2 to 6 mg/day given in divided doses, the largest dose being taken before bedtime, but the daily dose may vary from 1 to 10 mg/day.

For anxiety, most patients require an initial dose of 2 to 3 mg/day given b.i.d. or t.i.d.

For insomnia due to anxiety or transient situational stress, a single daily dose of 2 to 4 mg may be given, usually at bedtime.

For elderly or debilitated patients, an initial dosage of 1 to 2 mg/day in divided doses is recommended, to be adjusted as needed and tolerated.

The dosage of lorazepam tablets should be increased gradually when needed to help avoid adverse effects. When higher dosage is indicated, the evening dose should be increased before the daytime doses.

HOW SUPPLIED

Lorazepam Tablets, USP are available in the following dosage strengths:

0.5 mg white, round, flat face, beveled edge tablets, debossed “EP 904” on one side and plain on the other side.

They are available as follows:

Blisterpacks of 30: NDC 67046-924-30

1 mg white, round, flat face, beveled edge tablets, debossed “EP 905” and scored on one side and “1” on the other side.

They are available as follows:

Blisterpacks of 30: NDC 67046-958-30

2 mg white, round, flat face, beveled edge tablets, debossed “EP 906” and scored on one side and “2” on the other side.

They are available as follows:

Blisterpacks of 30: NDC 67046-936-30

BOTTLES:

Keep tightly closed

Store at 20° to 25°C (68° to 77°F) [See USP Controlled Room Temperature].

Dispense in a tight container.

Manufactured by:

Leading Pharma LLC

3 Oak Road, Fairfield, NJ 07004

Repackaged by:

Contract Pharmacy Services-PA
125 Titus Ave Suite 200
Warrington, PA 18976 USA

MEDICATION GUIDE Lorazepam Tablets, C-IV (lor az' e pam)

What is the most important information I should know about Lorazepam?

Lorazepam is a benzodiazepine medicine. Taking benzodiazepines with opioid medicines, alcohol, or other central nervous system depressants (including street drugs) can cause severe drowsiness, breathing problems (respiratory depression), coma and death.

Lorazepam can make you sleepy or dizzy, and can slow your thinking and motor skills.

Do not drive, operate heavy machinery, or do other dangerous activities until you know how Lorazepam affects you.

Do not drink alcohol or take other drugs that may make you sleepy or dizzy while taking Lorazepam without first talking to your healthcare provider. When taken with alcohol or drugs that cause sleepiness or dizziness, Lorazepam may make your sleepiness or dizziness much worse.

Do not take more Lorazepam than prescribed.

What is Lorazepam?

Lorazepam is a prescription medicine used:

to treat anxiety disorders

for the short-term relief of the symptoms of anxiety or anxiety that can happen with symptoms of depression

Lorazepam is a federal controlled substance (C-IV) because it can be abused or lead to dependence. Keep Lorazepam in a safe place to prevent misuse and abuse. Selling or giving away Lorazepam may harm others, and is against the law. Tell your healthcare provider if you have abused or been dependent on alcohol, prescription medicines or street drugs.

It is not known if Lorazepam is safe and effective in children less than 12 years of age.

It is not known if Lorazepam is safe and effective for use for longer than 4 months.

Do not take Lorazepam if you:

are allergic to lorazepam, other benzodiazepines, or any of the ingredients in Lorazepam. See the end of this Medication Guide for a complete list of ingredients in Lorazepam

Before you take Lorazepam, tell your healthcare provider about all of your medical conditions, including if you:

have or have had depression, mood problems, or suicidal thoughts or behavior

have a history of drug or alcohol abuse or addiction

have lung disease or breathing problems (such as COPD, sleep apnea syndrome)

have liver or kidney problems

have or have had seizures

are pregnant or plan to become pregnant. Lorazepam may harm your unborn baby. You and your healthcare provider should decide if you should take Lorazepam while you are pregnant.

are breastfeeding or plan to breastfeed. Lorazepam passes into your breast milk and may harm your baby. Talk to your healthcare provider about the best way to feed your baby if you take Lorazepam. You should not breastfeed while taking Lorazepam

Tell your healthcare provider about all the medicines you take, including prescription and over-the-counter medicines, vitamins, and herbal supplements.

Taking Lorazepam with certain other medicines can cause side effects or affect how well Lorazepam or the other medicines work. Do not start or stop other medicines without talking to your healthcare provider.

How should I take Lorazepam?

Take Lorazepam exactly as your healthcare provider tells you to take it. Your healthcare provider will tell you how much Lorazepam to take and when to take it.

If you take too much Lorazepam, call your healthcare provider or go to the nearest hospital emergency room right away.

What should I avoid while taking Lorazepam?

Lorazepam can cause you to be drowsy. Do not drive a car or operate heavy machinery until you know how Lorazepam affects you.

You should not drink alcohol while taking Lorazepam. Drinking alcohol can increase your chances of having serious side effects.

What are the possible side effects of Lorazepam?

Lorazepam may cause serious side effects, including:

See “What is the most important information I should know about Lorazepam?”

Depression. Pre-existing depression may emerge or worsen during use of benzodiazepines including Lorazepam.

Abuse and dependence. Taking Lorazepam can cause physical and psychological dependence. Physical and psychological dependence is not the same as drug addiction. Your healthcare provider can tell you more about the differences between physical and psychological dependence and drug addiction.

Withdrawal symptoms. You may have withdrawal symptoms if you stop taking Lorazepam suddenly.

Withdrawal symptoms can be serious and include seizures. Mild withdrawal symptoms include a depressed mood and trouble sleeping. Talk to your healthcare provider about slowly stopping Lorazepam to avoid withdrawal symptoms.

The most common side effects of Lorazepam include:

- sedation
- dizziness
- weakness
- unsteadiness

These are not all the possible side effects of Lorazepam. Call your doctor for medical advice about side effects. You may report side effects to FDA at 1-800-FDA-1088 or LEADING PHARMA, LLC AT 1-844-740-7500.

How should I store Lorazepam?

Store Lorazepam in a tightly closed container at 77°F (25°C); excursions permitted to 59° to 86°F (15° to 30°C).

Keep Lorazepam and all medicines out of the reach of children.

General information about the safe and effective use of Lorazepam.

Medicines are sometimes prescribed for purposes other than those listed in a Medication Guide. Do not use Lorazepam for a condition for which it was not prescribed. Do not give Lorazepam to other people, even if they have the same symptoms that you have. It may harm them. You can ask your pharmacist or healthcare provider for information about Lorazepam that is written for health professionals

What are the ingredients in Lorazepam?

Active ingredient: lorazepam

Inactive ingredients: lactose anhydrous, magnesium stearate, microcrystalline cellulose, and polacrillin

potassium.

PRINCIPAL DISPLAY PANEL - 0.5 mg

LORAZEPAM
0.5MG TAB #30



369315904053

Rx Only

CONTROLLED SUBSTANCE

LOT: TEST

PILL ID: EP 904

EXP:07/26/18



LEADING

Packaged By: Contract Pharmacy Services-PA
125 Titus Ave, Suite #200, Warrington, PA 18976

Usual Dosage: One to six mg per day, given in divided doses. See package insert for full prescribing information.



Store at 20-25°C (68-77°F) [See USP Controlled Room Temperature]

Each tablet contains: Lorazepam, USP...0.5MG

CPS NDC: 67046-924-30

PRINCIPAL DISPLAY PANEL - 1 mg

LORAZEPAM
1 MG TAB #30



369315905050

Rx Only

CONTROLLED SUBSTANCE

LOT: TEST

PILL ID: EP 905 1

EXP:07/26/18



LEADING

Packaged By: Contract Pharmacy Services-PA
125 Titus Ave, Suite #200, Warrington, PA 18976

Usual Dosage: One to six mg per day, given in divided doses. See package insert for full prescribing information.



Store at 20-25°C (68-77°F) [See USP Controlled Room Temperature]

Each tablet contains: Lorazepam, USP...1MG

CPS NDC: 67046-958-30

PRINCIPAL DISPLAY PANEL - 2 mg #30

LORAZEPAM
2 MG **TAB #30**



369315906019

Usual Dosage: One to six mg per day, given in divided doses. See package insert for full prescribing information.



Store at 20-25°C (68-77°F) [See USP Controlled Room Temperature]

CONTROLLED SUBSTANCE

LOT: TEST
 PILL ID: EP 906
 EXP: 07/26/18
 LEADING



Packaged By: Contract Pharmacy Services-PA
 125 Titus Ave, Suite #200, Warrington, PA 18976

Each tablet contains: Lorazepam, USP...2 MG

CPS NDC: 67046-936-30

LORAZEPAM

lorazepam tablet

Product Information

Product Type	HUMAN PRESCRIPTION DRUG	Item Code (Source)	NDC:67046-924(NDC:69315-904)
Route of Administration	ORAL	DEA Schedule	CIV

Active Ingredient/Active Moiety

Ingredient Name	Basis of Strength	Strength
LORAZEPAM (UNII: O26FZP769L) (LORAZEPAM - UNII:O26FZP769L)	LORAZEPAM	0.5 mg

Inactive Ingredients

Ingredient Name	Strength
ANHYDROUS LACTOSE (UNII: 3SY5LH9PMK)	
MAGNESIUM STEARATE (UNII: 70097M6I30)	
CELLULOSE, MICROCRYSTALLINE (UNII: OP1R32D61U)	
POLACRILIN POTASSIUM (UNII: 0BZ5A00FQU)	

Product Characteristics

Color	white	Score	no score
Shape	ROUND	Size	5mm
Flavor		Imprint Code	EP;904
Contains			

Packaging

#	Item Code	Package Description	Marketing Start Date	Marketing End Date
1	NDC:67046-924-30	30 in 1 BLISTER PACK; Type 0: Not a Combination Product	09/14/2017	

Marketing Information

Marketing Category	Application Number or Monograph Citation	Marketing Start Date	Marketing End Date
ANDA	ANDA078203	10/01/2007	

Labeler - Contract Pharmacy Services-PA (945429777)

Establishment

Name	Address	ID/FEI	Business Operations
Coupler Enterprises		945429777	repack(67046-924)

Revised: 9/2017

Contract Pharmacy Services-PA