

EQUALINE TUSSIN ADULT- dextromethorphan hbr, guaifenesin solution
United Natural Foods, Inc. dba UNFI

Disclaimer: Most OTC drugs are not reviewed and approved by FDA, however they may be marketed if they comply with applicable regulations and policies. FDA has not evaluated whether this product complies.

SuperValu Inc. Adult Tussin Drug Facts

Active ingredients (in each 10 mL)

Dextromethorphan HBr, USP 20 mg

Guaifenesin, USP 200 mg

Purposes

Cough suppressant

Expectorant

Uses

- temporarily relieves cough due to minor throat and bronchial irritation as may occur with a cold
- helps loosen phlegm (mucus) and thin bronchial secretions to drain bronchial tubes

Warnings

Do not use

if you are now taking a prescription monoamine oxidase inhibitor (MAOI) (certain drugs for depression, psychiatric, or emotional conditions, or Parkinson's disease), or for 2 weeks after stopping the MAOI drug. If you do not know if your prescription drug contains an MAOI, ask a doctor or pharmacist before taking this product.

Ask a doctor before use if you have

- cough that occurs with too much phlegm (mucus)
- cough that lasts or is chronic such as occurs with smoking, asthma, chronic bronchitis or emphysema

Stop use and ask a doctor if

cough lasts for more than 7 days, comes back, or is accompanied by fever, rash, or persistent headache. A persistent cough may be a sign of a serious condition.

If pregnant or breast-feeding,

ask a health professional before use.

Keep out of reach of children.

In case of overdose, get medical help or contact a Poison Control Center right away (1-800-222-1222).

Directions

- do not take more than 6 doses in any 24-hour period
- measure only with dosing cup provided
- keep dosing cup with product
- mL = milliliter
- this adult product is not intended for use in children under 12 years of age

age	dose
adults and children 12 years and over	10 mL every 4 hours
children under 12 years	do not use

Other information

- **each 10 mL contains:** sodium 6 mg
- store at 20-25°C (68-77°F). Do not refrigerate.

Inactive ingredients

anhydrous citric acid, FD&C red no. 40, flavor, glycerin, high fructose corn syrup, menthol, propylene glycol, purified water, sodium benzoate, sodium citrate, sucralose

Questions or comments?

1-877-932-7948

Principal Display Panel

compare to Robitussin® Cough + Chest Congestion DM active ingredients

adult

tussin

cough & chest congestion

dextromethorphan HBr (cough suppressant)

guaifenesin (expectorant)

non-drowsy

peak cold

DM

relieves:

cough

mucus

for ages 12 & over

ALCOHOL FREE

4 FL OZ (118mL)

NDC 41163-359-26

compare to
Robitussin® Cough +
Chest Congestion DM
active ingredients*

EQUALINE®

adult
tussin
cough & chest
congestion

dextromethorphan HBr
(cough suppressant)
guaifenesin (expectorant)

non-drowsy
peak cold

DM

relieves:
• cough
• mucus

for ages 12 & over
ALCOHOL FREE



4 FL OZ (118mL)



NDC 41163-359-26

compare to
Robitussin® Cough +
Chest Congestion DM
active ingredients*

EQUALINE®

adult
tussin
cough & chest
congestion

dextromethorphan HBr
(cough suppressant)
guaifenesin (expectorant)

non-drowsy
peak cold

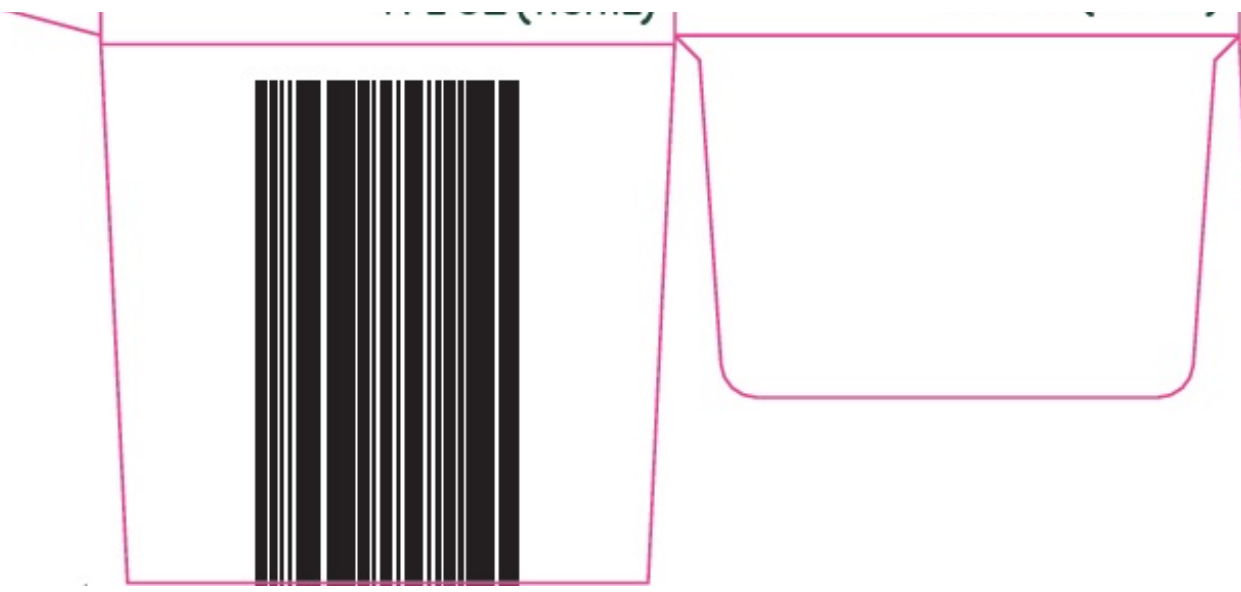
DM

relieves:
• cough
• mucus

for ages 12 & over
ALCOHOL FREE



4 FL OZ (118mL)



adult
tussin
 cough & chest
 congestion
 dextromethorphan HBr
 (cough suppressant)
 guaifenesin (expectorant)
EVALINE®

Drug Facts

Active ingredients **Purposes**
(in each 10 mL)
 Dextromethorphan HBr,
 USP 20 mg.....Cough suppressant
 Guaifenesin, USP 200 mg.....Expectorant

Uses

- temporarily relieves cough due to minor throat and bronchial irritation as may occur with a cold
- helps loosen phlegm (mucus) and thin bronchial secretions to drain bronchial tubes

Warnings

Do not use if you are now taking a prescription monoamine oxidase inhibitor (MAOI) (certain drugs for depression, psychiatric, or emotional conditions, or Parkinson's disease), or for 2 weeks after stopping the MAOI drug. If you do not know if your prescription drug contains an MAOI, ask a doctor or pharmacist before taking this product.

Ask a doctor before use if you have

- cough that occurs with too much phlegm (mucus)
- cough that lasts or is chronic such as occurs with smoking, asthma, chronic bronchitis, or emphysema

Stop use and ask a doctor if cough lasts for more than 7 days, comes back, or is accompanied by fever, rash, or persistent headache. A persistent cough may be a sign of a serious condition.

If pregnant or breast-feeding, ask a health professional before use.

Keep out of reach of children. In case of overdose, get medical help or contact a Poison Control Center right away (1-800-222-1222).

Directions

- do not take more than 6 doses in any 24-hour period
- measure only with dosing cup provided
- keep dosing cup with product
- mL = milliliter
- this adult product is not intended for use in children under 12 years of age

Drug Facts (continued)

age	dose
adults and children 12 years and over	10 mL every 4 hours
children under 12 years	do not use

Other information

- each 10 mL contains: sodium 6 mg
- store at 20-25°C (68-77°F).
Do not refrigerate.

Inactive ingredients anhydrous citric acid, FD&C red no. 40, flavor, glycerin, high fructose corn syrup, menthol, propylene glycol, purified water, sodium benzoate, sodium citrate, sucralose

Questions or comments?

1-877-932-7948

*This product is not manufactured or distributed by Pfizer, distributor of Robitussin® Cough + Chest Congestion DM.

GLUTEN FREE

Distributed by SUPERVALU INC.
Eden Prairie, MN 55344 USA



We're committed to your satisfaction and guarantee the quality of this product.

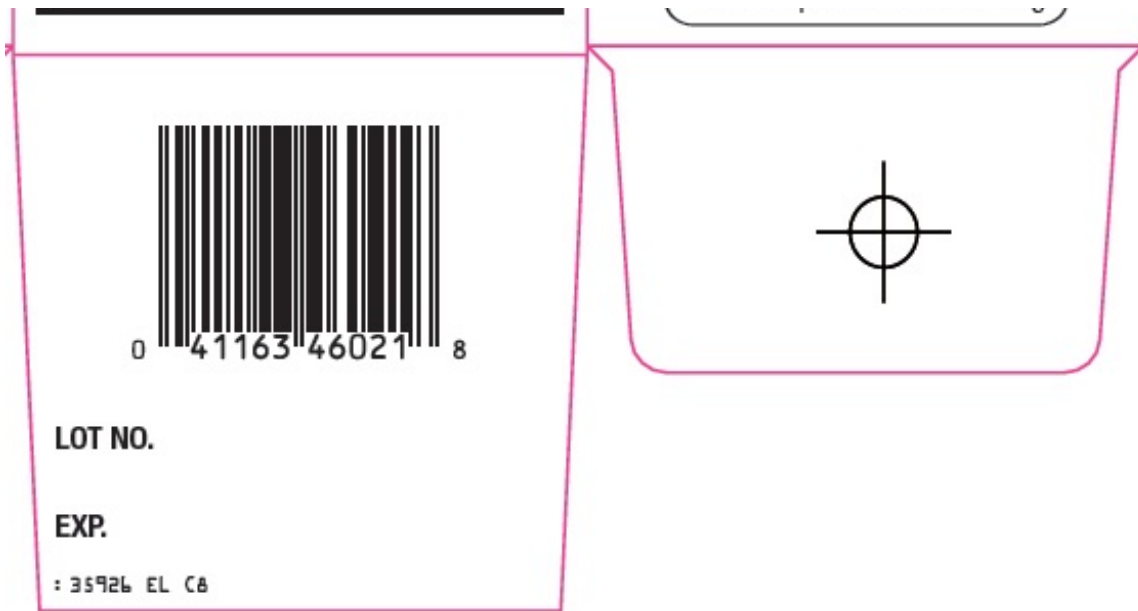
Contact us at 1-877-932-7948, or
www.supervalu-ourownbrands.com
 Please have package available.

DO NOT USE IF PRINTED NECKBAND IS BROKEN OR MISSING

PARENTS:

Learn about teen medicine abuse

www.StopMedicineAbuse.org



EQUALINE TUSSIN ADULT

dextromethorphan hbr, guaifenesin solution

Product Information

Product Type	HUMAN OTC DRUG	Item Code (Source)	NDC:41163-359
Route of Administration	ORAL		

Active Ingredient/Active Moiety

Ingredient Name	Basis of Strength	Strength
DEXTROMETHORPHAN HYDROBROMIDE (UNII: 9D2RTI9KYH) (DEXTROMETHORPHAN - UNII:7355X3ROTS)	DEXTROMETHORPHAN HYDROBROMIDE	20 mg in 10 mL
GUAIFENESIN (UNII: 495W7451VQ) (GUAIFENESIN - UNII:495W7451VQ)	GUAIFENESIN	200 mg in 10 mL

Inactive Ingredients

Ingredient Name	Strength
ANHYDROUS CITRIC ACID (UNII: XF417D3PSL)	
FD&C RED NO. 40 (UNII: WZB9127XOA)	
GLYCERIN (UNII: PDC6A3C0OX)	
HIGH FRUCTOSE CORN SYRUP (UNII: XY6UN3QB6S)	
PROPYLENE GLYCOL (UNII: 6DC9Q167V3)	
WATER (UNII: 059QF0KO0R)	
SODIUM BENZOATE (UNII: OJ245FE5EU)	
MENTHOL, UNSPECIFIED FORM (UNII: L7T10EIP3A)	
SODIUM CITRATE, UNSPECIFIED FORM (UNII: 1Q73Q2JULR)	
SUCRALOSE (UNII: 96K6UQ3ZD4)	

Product Characteristics

Color	RED (Orange-Red)	Score	
Shape		Size	
Flavor	CHERRY	Imprint Code	
Contains			

Packaging

#	Item Code	Package Description	Marketing Start Date	Marketing End Date
1	NDC:41163-359-26	1 in 1 CARTON	08/24/2004	
1		118 mL in 1 BOTTLE; Type 0: Not a Combination Product		
2	NDC:41163-359-34	1 in 1 CARTON	08/30/2004	10/31/2023
2		237 mL in 1 BOTTLE; Type 0: Not a Combination Product		

Marketing Information

Marketing Category	Application Number or Monograph Citation	Marketing Start Date	Marketing End Date
OTC monograph final	part341	08/24/2004	

Labeler - United Natural Foods, Inc. dba UNFI (943556183)

Revised: 7/2023

United Natural Foods, Inc. dba UNFI