

DERACIN 90 MEAL- chlortetracycline calcium granule
Pharmgate Animal Health

Deracin® 90 Meal

Chlortetracycline

Type A Medicated Article

Active Drug Ingredients: Chlortetracycline as Chlortetracycline Calcium Complex Equivalent to 90 grams Chlortetracycline Hydrochloride/lb.

Ingredients: Dried *Streptomyces aureofaciens* fermentation product in a carrier suitable for incorporation in feed.

For Use in the Manufacture of Medicated Feeds.

CAUTION: For use in Dry Feeds ONLY. NOT FOR USE IN LIQUID FEED SUPPLEMENTS

Use	Mix sufficient Deracin® 90 Meal Type A Medicated Article to supply desired concentration of chlortetracycline per ton with part of the feed ingredients to make a preblend. Add the remainder of the ingredients and mix thoroughly. For specific use levels, see Indications.
------------	---

Mixing directions:

Level desired grams per ton	Amount of medicated Article per ton*
50	9 oz
100	1lb 2 oz
200	2 lb 4 oz
400	4 lb 8 oz
500	5 lb 9 oz

INDICATIONS FOR USE	Chlortetracycline mg per lb body weight per day
----------------------------	--

Cattle

Beef cattle (over 700 lbs.): Control of active infection of anaplasmosis caused by <i>Anaplasma marginale</i> susceptible to chlortetracycline.	0.5
Beef and Non-Lactating Dairy Cattle: As an aid in the control of active infection of anaplasmosis caused by <i>Anaplasma marginale</i> susceptible to chlortetracycline when delivered in a free-choice feed. Free-choice feed must be manufactured under a medicated feed mill license utilizing an FDAapproved formulation.	0.5-2.0
Calves, Beef, and Nonlactating Dairy Cattle: Treatment of bacterial enteritis caused by <i>Escherichia coli</i> and bacterial pneumonia caused by <i>Pasteurella multocida</i> organisms susceptible to chlortetracycline. Feed for not more than 5 days. The appropriate amount of Deracin® containing feed supplement may be mixed in the cattle's daily ration or administered as a top dress. If the Deracin® containing feed supplement is administered as a top dress, it must be spread uniformly on top of the ration and sufficient space must be provided so that all cattle can eat at the same time.	10

Swine

Control of porcine proliferative enteropathies (ileitis) caused by

<i>Lawsonia intracellularis</i> susceptible to chlortetracycline. Treatment of bacterial enteritis caused by <i>Escherichia coli</i> and <i>Salmonella choleraesuis</i> and bacterial pneumonia caused by <i>Pasteurella multocida</i> susceptible to chlortetracycline. (Note: This drug level is equivalent to approximately 400 grams per ton, depending on feed consumption and body weight). Feed for not more than 14 days.	10
Turkeys Control of complicating bacterial organisms associated with bluecomb (transmissible enteritis, coronaviral enteritis) susceptible to chlortetracycline. Feed continuously for 7 - 14 days.	25
INDICATIONS FOR USE	mg per head per day
Cattle Growing cattle (over 400 lbs.): For the reduction of the incidence of liver abscesses.	70
Beef Cattle: Control of bacterial pneumonia associated with shipping fever complex caused by <i>Pasteurella</i> spp. susceptible to chlortetracycline	350
Beef cattle (under 700 lbs.): Control of active infection of anaplasmosis caused by <i>Anaplasma marginale</i> susceptible to chlortetracycline.	350
Sheep Breeding Sheep: Reduction in the incidence of (vibriotic) abortions caused by <i>Campylobacter fetus</i> infection susceptible to chlortetracycline.	80
INDICATIONS FOR USE	In complete feed Chlortetracycline g per ton
Swine Reduction in the incidence of cervical lymphadenitis (jowl abscesses) caused by <i>Group E Streptococci</i> susceptible to chlortetracycline	50-100
Breeding Swine: Control of leptospirosis (reducing the instances of abortion and shedding of leptospirae) caused by <i>Leptospira pomona</i> susceptible to chlortetracycline. Feed continuously for not more than 14 days.	400
Ducks Control and treatment of fowl cholera caused by <i>Pasteurella multocida</i> susceptible to chlortetracycline. Feed in complete ration to provide from 8 to 28 mg per pound of body weight per day depending upon age and severity of disease. Feed for not more than 21 days.	200-400
Chickens Control of infectious synovitis caused by <i>Mycoplasma synoviae</i> susceptible to chlortetracycline. Feed continuously for 7 - 14 days.	100-200
Control of chronic respiratory disease (CRD) and air sac infection caused by <i>Mycoplasma gallisepticum</i> and <i>Escherichia coli</i> susceptible to chlortetracycline. Feed continuously for 7 - 14 days.	200-400
Reduction of mortality due to <i>Escherichia coli</i> infections susceptible to chlortetracycline. Feed for 5 days.	500
Turkeys Control of infectious synovitis caused by <i>Mycoplasma synoviae</i> susceptible to chlortetracycline Feed continuously for 7 - 14 days.	200
Control of hexamitiasis caused by <i>Hexamita meleagridis</i> susceptible to	400

chlortetracycline. Feed continuously for 7 - 14 days.	400
Turkey poults not over 4 weeks of age: Reduction of mortality due to paratyphoid caused by <i>Salmonella typhimurium</i> susceptible to chlortetracycline.	400

INDICATIONS FOR USE	Mg per g feed
----------------------------	----------------------

<p>Psittacine birds</p> <p>Warning: Psittacosis, avian chlamydiosis, or ornithosis is a reportable communicable disease, transmissible between wild and domestic birds, other animals and man. Contact appropriate public health and regulatory officials.</p> <p>Caution: Aspergillosis may occur following prolonged treatment.</p> <p>Treatment of psittacine birds (parrots, macaws, cockatoos) suspected or known to be infected with psittacosis caused by <i>Chlamydia psittaci</i> sensitive to chlortetracycline. Feed continuously for 45 days. Each bird should consume an amount of medicated feed equal to one-fifth of this body weight daily. During treatment, parrots, macaws, and cockatoos should be kept individually or in pairs in clean cages.</p>	10
--	----

* It is recommended that 1 pound 2 ounces of Deracin 90 Meal Type A Medicated Article be diluted with 2 pounds 14 ounces of one of the feed ingredients to form a 4 pound working premix. Use 2 pounds of the working premix to make a preblend (see Use Directions) for a Type C feed containing 50g chlortetracycline/ton of feed.

Warning:

A withdrawal period has not been established for this product in preruminating calves.

Do not use In calves to be processed for veal.

Do not feed to ducks or turkeys producing eggs for human consumption.

Store below 25°C (77°F), excursions permitted to 40°C (104°F). Tightly reseal opened bags.

ANADA 200-510 Approved by FDA

Marketed by:

Pharmgate Animal Health, LLC

14040 Industrial Road

Omaha, NE 68144



Take Time

Observe Directions

PRINCIPAL DISPLAY PANEL - 22.68 Kg Bag Label

Deracin® 90 Meal

Chlortetracycline

Type A Medicated Article

CAUTION: Federal law restricts medicated feed containing this veterinary feed directive (VFD) drug to use by or on the order of a licensed veterinarian.

See mixing directions, claims, cautions and warnings on back.

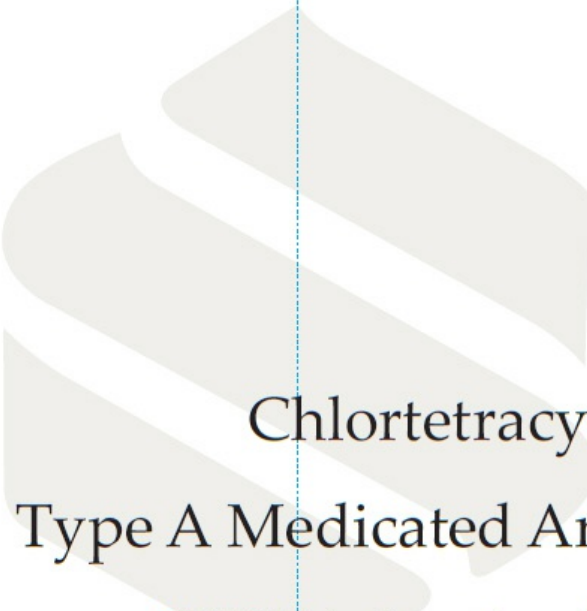
Restricted Drug (California) – Use Only as Directed.
Not For Human Use.

Net wt. 50 LB (22.68 Kg)



Deracin[®] 90 Meal

Deracin[®] 90 Meal



Chlortetracycline

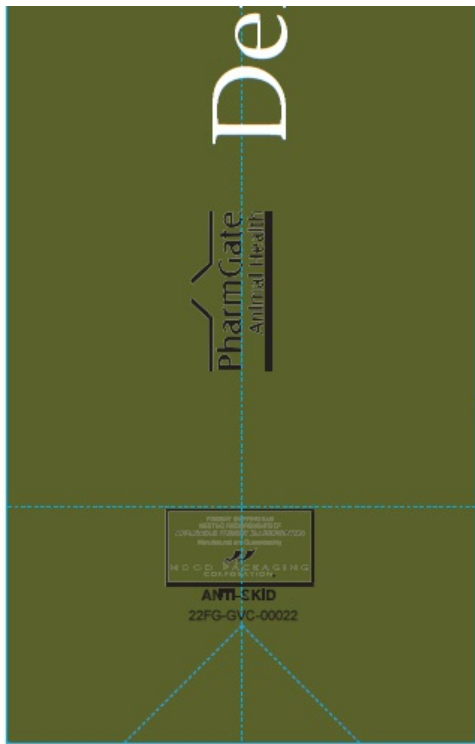
Type A Medicated Article

CAUTION: Federal law restricts medicated feed containing this veterinary feed directive (VFD) drug to use by or on the order of a licensed veterinarian.

See mixing directions, claims, cautions and warnings on back.

Restricted Drug (California) - Use Only as Directed.
Not For Human Use.

Net wt. 50 LB (22.68 Kg)



chlortetracycline. Feed continuously for 7 to 14 days.		Tissue product over 6 weeks of age. Indication of rickettsial disease. 40 mg/ml product used by oral administration as capsules.	
Indications For Use	suggested rate	Indications For Use	suggested rate
Cattle Cows: Control of bacterial pneumonia associated with shipping fever. Beef Cattle: Control of bacterial pneumonia associated with shipping fever complex caused by Pasteurella spp. susceptible to chlortetracycline.	70	Pulmonary Infections Warning: Pulmonary infections, such as bronchopneumonia, are notifiable diseases. Inoculation between 6 weeks and 6 months. Notify other animal health care. Contact appropriate public health and regulatory officials.	40 mg/ml
Beef Cattle (Jackie 7000): Control of acute infection of angioedema caused by <i>Angiostrongylus axei</i> susceptible to chlortetracycline.	100	Treatment of pulmonary infections, such as bronchopneumonia, or lesions to be treated with pulsed chlortetracycline. Chlortetracycline capsules to chlortetracycline. Feed continuously for 5 days. Feed should contain a concentration of medicine level to give one fifth of the body weight daily. During treatment, pasture, manure, and excrement should be kept individually or in pairs in clean bags.	10
Sheep Breeding Sheep: Reduction in the incidence of pneumonia caused by <i>Campylobacter jejuni</i> susceptible to chlortetracycline.	40		
A withdrawal period has not been established for this product in pre-maturing calves. Warning: Do not use in calves to be processed for veal. Do not feed to chicks or turkeys producing eggs for human consumption.			
Store below 25°C (77°F), excursions permitted to 4°C (40°F). Tightly sealed bags.			
ANADA200510 Approved by FDA			

Rev. 10-16
Bag D90



Marketed by:
Pharmgate Animal Health, LLC
14040 Industrial Road
Omaha, Nebraska 68144



DERACIN 90 MEAL

chlortetracycline calcium granule

Product Information

Product Type	VFD TYPE A MEDICATED ARTICLE ANIMAL DRUG	Item Code (Source)	NDC:51429-092
Route of Administration	ORAL		

Active Ingredient/Active Moiety

Ingredient Name	Basis of Strength	Strength
Chlortetracycline Calcium (UNII: NR4B2SX17S) (Chlortetracycline - UNII: WCK1KIQ23Q)	Chlortetracycline Hydrochloride	198 g in 1 kg

Packaging

#	Item Code	Package Description	Marketing Start Date	Marketing End Date
1	NDC:51429-092-05	22.68 kg in 1 BAG		

Marketing Information

Marketing Category	Application Number or Monograph Citation	Marketing Start Date	Marketing End Date
ANADA	ANADA200510	09/06/2018	

Labeler - Pharmgate Animal Health (833270817)

