

**METHOCARBAMOL- methocarbamol tablet, film coated**  
**Sportpharm, Inc. dba Sportpharm**

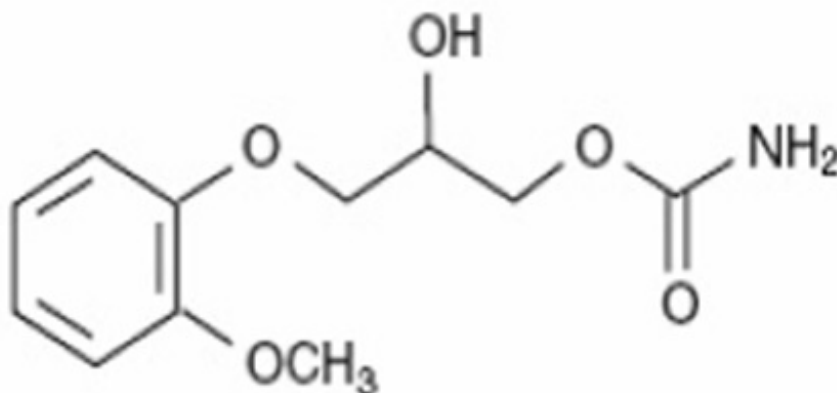
-----  
**Methocarbamol Tablets, USP**

**Rx only**

**DESCRIPTION**

Methocarbamol tablets, USP, a carbamate derivative of guaifenesin, is a central nervous system (CNS) depressant with sedative and musculoskeletal relaxant properties.

The chemical name of methocarbamol is 3-(2-methoxyphenoxy)-1,2-propanediol 1-carbamate and has the empirical formula  $C_{11}H_{15}NO_5$ . Its molecular weight is 241.24. The structural formula is shown below.



Methocarbamol is a white bulky powder, sparingly soluble in water and chloroform, soluble in alcohol only with heating and insoluble in benzene and *n*-hexane.

Methocarbamol tablets USP, 750 mg are available as white in color, biconvex capsule shaped film-coated tablet containing 750 mg of methocarbamol USP for oral administration.

Methocarbamol tablets USP, 750 mg contain the following inactive ingredients: corn starch, hypromellose, magnesium stearate, polyethylene glycol, povidone, sodium lauryl sulfate, sodium starch glycolate, talc and titanium dioxide.

**CLINICAL PHARMACOLOGY**

The mechanism of action of methocarbamol in humans has not been established, but may be due to general CNS depression. It has no direct action on the contractile mechanism of striated muscle, the motor end plate or the nerve fiber.

**Pharmacokinetics**

In healthy volunteers, the plasma clearance of methocarbamol ranges between 0.20 and 0.80 L/h/kg, the mean plasma elimination half-life ranges between 1 and 2 hours, and the plasma protein binding ranges between 46% and 50%.

Methocarbamol is metabolized via dealkylation and hydroxylation. Conjugation of methocarbamol also is likely. Essentially all methocarbamol metabolites are eliminated in the urine. Small amounts of unchanged methocarbamol also are excreted in the urine.

## **Special populations**

### *Elderly*

The mean ( $\pm$  SD) elimination half-life of methocarbamol in elderly healthy volunteers (mean [ $\pm$  SD] age, 69 [ $\pm$  4] years) was slightly prolonged compared to a younger (mean [ $\pm$  SD] age, 53.3 [ $\pm$  8.8] years), healthy population (1.5 [ $\pm$  0.4] hours versus 1.1 [ $\pm$  0.27] hours, respectively). The fraction of bound methocarbamol was slightly decreased in the elderly versus younger volunteers (41% to 43% versus 46% to 50%, respectively).

### *Renally impaired*

The clearance of methocarbamol in 8 renally-impaired patients on maintenance hemodialysis was reduced about 40% compared to 17 normal subjects, although the mean ( $\pm$  SD) elimination half-life in these two groups was similar: 1.2 ( $\pm$  0.6) versus 1.1 ( $\pm$  0.3) hours, respectively.

### *Hepatically impaired*

In 8 patients with cirrhosis secondary to alcohol abuse, the mean total clearance of methocarbamol was reduced approximately 70% compared to that obtained in 8 age- and weight-matched normal subjects. The mean ( $\pm$  SD) elimination half-life in the cirrhotic patients and the normal subjects was 3.38 ( $\pm$  1.62) hours and 1.11 ( $\pm$  0.27) hours, respectively. The percent of methocarbamol bound to plasma proteins was decreased to approximately 40% to 45% compared to 46% to 50% in the normal subjects.

## **INDICATIONS AND USAGE**

Methocarbamol tablets are indicated as an adjunct to rest, physical therapy, and other measures for the relief of discomfort associated with acute, painful musculoskeletal conditions. The mode of action of methocarbamol has not been clearly identified, but may be related to its sedative properties. Methocarbamol does not directly relax tense skeletal muscles in man.

## **CONTRAINDICATIONS**

Methocarbamol tablets are contraindicated in patients hypersensitive to methocarbamol or to any of the tablet components.

## **WARNINGS**

Since methocarbamol may possess a general CNS depressant effect, patients receiving methocarbamol should be cautioned about combined effects with alcohol and other CNS depressants.

Safe use of methocarbamol has not been established with regard to possible adverse effects upon fetal development. There have been reports of fetal and congenital abnormalities following in utero exposure to methocarbamol. Therefore, methocarbamol should not be used in women who are or may become pregnant and particularly during early pregnancy unless in the judgment of the physician the potential benefits outweigh the possible hazards (see **PRECAUTIONS, Pregnancy**).

### **Use in Activities Requiring Mental Alertness**

Methocarbamol may impair mental and/or physical abilities required for performance of hazardous tasks, such as operating machinery or driving a motor vehicle. Patients should be cautioned about operating machinery, including automobiles, until they are reasonably certain that methocarbamol therapy does not adversely affect their ability to engage in such activities.

## **PRECAUTIONS**

### **Information for Patients**

Patients should be cautioned that methocarbamol may cause drowsiness or dizziness, which may impair their ability to operate motor vehicles or machinery.

Because methocarbamol may possess a general CNS-depressant effect, patients should be cautioned about combined effects with alcohol and other CNS depressants.

### **Drug Interactions**

See **WARNINGS** and **PRECAUTIONS** for interaction with CNS drugs and alcohol.

Methocarbamol may inhibit the effect of pyridostigmine bromide. Therefore, methocarbamol should be used with caution in patients with myasthenia gravis receiving anticholinesterase agents.

### **Drug/Laboratory Test Interactions**

Methocarbamol may cause a color interference in certain screening tests for 5-hydroxyindoleacetic acid (5-HIAA) using nitrosonaphthol reagent and in screening tests for urinary vanillylmandelic acid (VMA) using the Gitlow method.

### **Carcinogenesis, Mutagenesis, Impairment of Fertility**

Long-term studies to evaluate the carcinogenic potential of methocarbamol have not been performed. No studies have been conducted to assess the effect of

methocarbamol on mutagenesis or its potential to impair fertility.

## **Pregnancy**

### *Teratogenic Effects*

Animal reproduction studies have not been conducted with methocarbamol. It is also not known whether methocarbamol can cause fetal harm when administered to a pregnant woman or can affect reproduction capacity. Methocarbamol should be given to a pregnant woman only if clearly needed.

Safe use of methocarbamol has not been established with regard to possible adverse effects upon fetal development. There have been reports of fetal and congenital abnormalities following in utero exposure to methocarbamol. Therefore, methocarbamol should not be used in women who are or may become pregnant and particularly during early pregnancy unless in the judgment of the physician the potential benefits outweigh the possible hazards (see **WARNINGS**).

## **Nursing Mothers**

Methocarbamol and/or its metabolites are excreted in the milk of dogs; however, it is not known whether methocarbamol or its metabolites are excreted in human milk. Because many drugs are excreted in human milk, caution should be exercised when methocarbamol is administered to a nursing woman.

## **Pediatric Use**

Safety and effectiveness of methocarbamol in pediatric patients below the age of 16 have not been established.

## **ADVERSE REACTIONS**

Adverse reactions reported coincident with the administration of methocarbamol include:

*Body as a whole:*Anaphylactic reaction, angioneurotic edema, fever, headache

*Cardiovascular system:*Bradycardia, flushing, hypotension, syncope, thrombophlebitis

*Digestive system:*Dyspepsia, jaundice (including cholestatic jaundice), nausea and vomiting

*Hemic and lymphatic system:*Leukopenia

*Immune system:*Hypersensitivity reactions

*Nervous system:* Amnesia, confusion, diplopia, dizziness or lightheadedness, drowsiness, insomnia, mild muscular incoordination, nystagmus, sedation, seizures

(including grand mal), vertigo

*Skin and special senses:* Blurred vision, conjunctivitis, nasal congestion, metallic taste, pruritus, rash, urticaria

## **OVERDOSAGE**

Limited information is available on the acute toxicity of methocarbamol. Overdose of methocarbamol is frequently in conjunction with alcohol or other CNS depressants and includes the following symptoms: nausea, drowsiness, blurred vision, hypotension, seizures, and coma.

In post-marketing experience, deaths have been reported with an overdose of methocarbamol alone or in the presence of other CNS depressants, alcohol or psychotropic drugs.

## **Treatment**

Management of overdose includes symptomatic and supportive treatment. Supportive measures include maintenance of an adequate airway, monitoring urinary output and vital signs, and administration of intravenous fluids if necessary. The usefulness of hemodialysis in managing overdose is unknown.

## **DOSAGE AND ADMINISTRATION**

Methocarbamol tablets, 500 mg - Adults:

Initial dosage: 3 tablets 4 times daily.

Maintenance dosage: 2 tablets 4 times daily.

Methocarbamol tablets: 750 mg - Adults:

Initial dosage: 2 tablets 4 times daily.

Maintenance dosage: 1 tablet q.4h. or 2 tablets 3 times daily.

Six grams a day are recommended for the first 48 to 72 hours of treatment. (For severe conditions 8 grams a day may be administered.) Thereafter, the dosage can usually be reduced to approximately 4 grams a day.

## **HOW SUPPLIED**

**Methocarbamol Tablets USP, 750 mg** are white in color, biconvex capsule shaped film-coated tablet, debossed with "METT" on one side and "750" on the other side. They are supplied as follows:

Bottles of 28 NDC 85766-060-28 (repackaged from NDC 59651-341-XX)

Bottles of 30 NDC 85766-060-30 (repackaged from NDC 59651-341-XX)

Bottles of 42 NDC 85766-060-42 (repackaged from NDC 59651-341-XX)

Bottles of 60 NDC 85766-060-60 (repackaged from NDC 59651-341-XX)

Bottles of 90 NDC 85766-060-90 (repackaged from NDC 59651-341-XX)

Bottles of 100 NDC 85766-060-01 (relabeled from NDC 59651-341-01)

Bottles of 500 NDC 85766-060-05 (relabeled from NDC 59651-341-05)

**Store at** 20° to 25°C (68° to 77°F) [see USP Controlled Room Temperature].

**Dispense in tight container.**

For more information, call Aurobindo Pharma USA, Inc. at 1-866-850-2876.

**Distributed by:**

Sportpharm

2237 N Commerce Parkway,

STE 1, Weston, Florida-33326

**Relabeled and Repackaged by:**

Enovachem PHARMACEUTICALS

Torrance, CA 90501

**PACKAGE LABEL-PRINCIPAL DISPLAY PANEL**

Repackaged For:

**SPORTPHARM**

2237 N Commerce Parkway,  
STE 1,  
Weston Florida 33326

**Methocarbamol Tablets, USP 750mg**  
NDC: 85766-060-28  
Qty: 28

Distributed By: Aurobindo Pharma USA, Inc.  
Source NDC: 59651-341-XX  
Description: white,capsule shaped,film-coated tablet/debossed METT;750  
Lot #: 00000000 Exp:  
Batch #: 00000000  
Drug Status: RX

(01)0 0385766 06028 5  
(17)  
(10) 00000000  
(21)

CAUTION: FEDERAL LAW PROHIBITS DISPENSING WITHOUT PRESCRIPTION. SEE PACKAGE INSERT.  
KEEP OUT OF REACH OF CHILDREN. STORE AT 20-25C (68-77F) [SEE USP CONTROLLED ROOM TEMP].

Methocarbamol Tablets, USP 750mg  
NDC: 85766-060-28  
S/N:  
Qty: 28

Methocarbamol Tablets, USP 750mg  
NDC: 85766-060-28  
S/N:  
Qty: 28

Methocarbamol Tablets, USP 750mg  
NDC: 85766-060-28  
S/N:  
Qty: 28

Relabeled For:

**SPORTPHARM**

2237 N Commerce Parkway,  
STE 1,  
Weston Florida 33326

**Methocarbamol Tablets, USP 750mg**  
NDC: 85766-060-01  
Qty: 100

Distributed By: Aurobindo Pharma USA, Inc.  
Source NDC: 59651-341-01  
Description: white,capsule shaped,film-coated tablet/debossed METT;750  
Lot #: 00000000 Exp:  
Batch #: 00000000  
Drug Status: RX

(01)0 0385766 06001 8  
(17)  
(10) 00000000  
(21)

CAUTION: FEDERAL LAW PROHIBITS DISPENSING WITHOUT PRESCRIPTION. SEE PACKAGE INSERT.  
KEEP OUT OF REACH OF CHILDREN. STORE AT 20-25C (68-77F) [SEE USP CONTROLLED ROOM TEMP].

Methocarbamol Tablets, USP 750mg  
NDC: 85766-060-01  
S/N:  
Qty: 100

Methocarbamol Tablets, USP 750mg  
NDC: 85766-060-01  
S/N:  
Qty: 100

Methocarbamol Tablets, USP 750mg  
NDC: 85766-060-01  
S/N:  
Qty: 100

Repackaged For:

**SPORTPHARM**

2237 N Commerce Parkway,  
STE 1,  
Weston Florida 33326

**Methocarbamol Tablets, USP 750mg**  
NDC: 85766-060-30  
Qty: 30

Distributed By: Aurobindo Pharma USA, Inc.  
Source NDC: 59651-341-XX  
Description: white,capsule shaped,film-coated tablet/debossed METT;750  
Lot #: 00000000 Exp:  
Batch #: 00000000  
Drug Status: RX

(01)0 0385766 06030 8  
(17)  
(10) 00000000  
(21)

CAUTION: FEDERAL LAW PROHIBITS DISPENSING WITHOUT PRESCRIPTION. SEE PACKAGE INSERT.  
KEEP OUT OF REACH OF CHILDREN. STORE AT 20-25C (68-77F) [SEE USP CONTROLLED ROOM TEMP].

Methocarbamol Tablets, USP 750mg  
NDC: 85766-060-30  
S/N:  
Qty: 30

Methocarbamol Tablets, USP 750mg  
NDC: 85766-060-30  
S/N:  
Qty: 30

Methocarbamol Tablets, USP 750mg  
NDC: 85766-060-30  
S/N:  
Qty: 30

Relabeled For:

**SPORTPHARM**

2237 N Commerce Parkway,  
STE 1,  
Weston Florida 33326

**Methocarbamol Tablets, USP 750mg**  
NDC: 85766-060-05  
Qty: 500

Distributed By: Aurobindo Pharma USA, Inc.  
Source NDC: 59651-341-05  
Description: white,capsule shaped,film-coated tablet/debossed METT;750  
Lot #: 00000000 Exp:  
Batch #: 00000000  
Drug Status: RX

(01)0 0385766 06005 6  
(17)  
(10) 00000000  
(21)

CAUTION: FEDERAL LAW PROHIBITS DISPENSING WITHOUT PRESCRIPTION. SEE PACKAGE INSERT.  
KEEP OUT OF REACH OF CHILDREN. STORE AT 20-25C (68-77F) [SEE USP CONTROLLED ROOM TEMP].

Methocarbamol Tablets, USP 750mg  
NDC: 85766-060-05  
S/N:  
Qty: 500

Methocarbamol Tablets, USP 750mg  
NDC: 85766-060-05  
S/N:  
Qty: 500

Methocarbamol Tablets, USP 750mg  
NDC: 85766-060-05  
S/N:  
Qty: 500

Repackaged For:

**SPORTPHARM**

2237 N Commerce Parkway,  
STE 1,  
Weston Florida 33326

**Methocarbamol Tablets, USP 750mg**  
NDC: 85766-060-42  
Qty: 42

Distributed By: Aurobindo Pharma USA, Inc.  
Source NDC: 59651-341-XX  
Description: white,capsule shaped,film-coated tablet/debossed METT;750  
Lot #: 00000000 Exp:  
Batch #: 00000000  
Drug Status: RX

(01)0 0385766 06042 1  
(17)  
(10) 00000000  
(21)

CAUTION: FEDERAL LAW PROHIBITS DISPENSING WITHOUT PRESCRIPTION. SEE PACKAGE INSERT.  
KEEP OUT OF REACH OF CHILDREN. STORE AT 20-25C (68-77F) [SEE USP CONTROLLED ROOM TEMP].

Methocarbamol Tablets, USP 750mg  
NDC: 85766-060-42  
S/N:  
Qty: 42

Methocarbamol Tablets, USP 750mg  
NDC: 85766-060-42  
S/N:  
Qty: 42

Methocarbamol Tablets, USP 750mg  
NDC: 85766-060-42  
S/N:  
Qty: 42

Repackaged For:

**SPORTPHARM**

2237 N Commerce Parkway,  
STE 1,  
Weston Florida 33326

**Methocarbamol Tablets, USP 750mg**  
NDC: 85766-060-60  
Qty: 60

Distributed By: Aurobindo Pharma USA, Inc.  
Source NDC: 59651-341-XX  
Description: white,capsule shaped,film-coated tablet/debossed METT;750  
Lot #: 00000000 Exp:  
Batch #: 00000000  
Drug Status: RX

(01)0 0385766 06060 5  
(17)  
(10) 00000000  
(21)

CAUTION: FEDERAL LAW PROHIBITS DISPENSING WITHOUT PRESCRIPTION. SEE PACKAGE INSERT.  
KEEP OUT OF REACH OF CHILDREN. STORE AT 20-25C (68-77F) [SEE USP CONTROLLED ROOM TEMP].

Methocarbamol Tablets, USP 750mg  
NDC: 85766-060-60  
S/N:  
Qty: 60

Methocarbamol Tablets, USP 750mg  
NDC: 85766-060-60  
S/N:  
Qty: 60

Methocarbamol Tablets, USP 750mg  
NDC: 85766-060-60  
S/N:  
Qty: 60

Repackaged For:

**SPORTPHARM**

2237 N Commerce Parkway,  
STE 1,  
Weston Florida 33326

**Methocarbamol Tablets, USP 750mg**  
NDC: 85766-060-90  
Qty: 90

Distributed By: Aurobindo Pharma USA, Inc.  
Source NDC: 59651-341-XX  
Description: white,capsule shaped,film-coated tablet/debossed METT;750  
Lot #: 00000000 Exp:  
Batch #: 00000000  
Drug Status: RX

(01)0 0385766 06090 2  
(17)  
(10) 00000000  
(21)

CAUTION: FEDERAL LAW PROHIBITS DISPENSING WITHOUT PRESCRIPTION. SEE PACKAGE INSERT.  
KEEP OUT OF REACH OF CHILDREN. STORE AT 20-25C (68-77F) [SEE USP CONTROLLED ROOM TEMP].

Methocarbamol Tablets, USP 750mg  
NDC: 85766-060-90  
S/N:  
Qty: 90

Methocarbamol Tablets, USP 750mg  
NDC: 85766-060-90  
S/N:  
Qty: 90

Methocarbamol Tablets, USP 750mg  
NDC: 85766-060-90  
S/N:  
Qty: 90

# METHOCARBAMOL

methocarbamol tablet, film coated

## Product Information

<b>Product Type</b>	HUMAN PRESCRIPTION DRUG	<b>Item Code (Source)</b>	NDC:85766-060(NDC:59651-341)
<b>Route of Administration</b>	ORAL		

## Active Ingredient/Active Moiety

Ingredient Name	Basis of Strength	Strength
METHOCARBAMOL (UNII: 125OD7737X) (METHOCARBAMOL - UNII:125OD7737X)	METHOCARBAMOL	750 mg

## Inactive Ingredients

Ingredient Name	Strength
<b>STARCH, CORN</b> (UNII: O8232NY3SJ)	
<b>HYPROMELLOSE 2910 (6 MPA.S)</b> (UNII: 0WZ8WG20P6)	
<b>MAGNESIUM STEARATE</b> (UNII: 70097M6I3O)	
<b>POLYETHYLENE GLYCOL 400</b> (UNII: B697894SGQ)	
<b>POVIDONE K30</b> (UNII: U725QWY32X)	
<b>SODIUM LAURYL SULFATE</b> (UNII: 368GB5141J)	
<b>SODIUM STARCH GLYCOLATE TYPE A POTATO</b> (UNII: 5856J3G2A2)	
<b>TALC</b> (UNII: 7SEV7J4R1U)	
<b>TITANIUM DIOXIDE</b> (UNII: 15FIX9V2JP)	

### Product Characteristics

<b>Color</b>	white	<b>Score</b>	no score
<b>Shape</b>	CAPSULE (Biconvex)	<b>Size</b>	19mm
<b>Flavor</b>		<b>Imprint Code</b>	METT;750
<b>Contains</b>			

### Packaging

#	Item Code	Package Description	Marketing Start Date	Marketing End Date
1	NDC:85766-060-28	28 in 1 BOTTLE; Type 0: Not a Combination Product	08/29/2025	
2	NDC:85766-060-30	30 in 1 BOTTLE; Type 0: Not a Combination Product	08/29/2025	
3	NDC:85766-060-42	42 in 1 BOTTLE; Type 0: Not a Combination Product	08/29/2025	
4	NDC:85766-060-60	60 in 1 BOTTLE; Type 0: Not a Combination Product	08/29/2025	
5	NDC:85766-060-90	90 in 1 BOTTLE; Type 0: Not a Combination Product	08/29/2025	
6	NDC:85766-060-01	100 in 1 BOTTLE; Type 0: Not a Combination Product	08/29/2025	
7	NDC:85766-060-05	500 in 1 BOTTLE; Type 0: Not a Combination Product	08/29/2025	

### Marketing Information

Marketing Category	Application Number or Monograph Citation	Marketing Start Date	Marketing End Date
ANDA	ANDA213967	08/12/2020	

**Labeler** - Sportpharm, Inc. dba Sportpharm (139010449)