

TUSSIN DM MAX NIGHTTIME- dextromethorphan hbr, doxylamine succinate solution
Wal-Mart Stores Inc

Equate 44-043

Active ingredients (in each 20 mL)

Dextromethorphan HBr 30 mg
Doxylamine succinate 12.5 mg

Purpose

Cough suppressant
Antihistamine

Uses

- temporarily relieves cough due to minor throat and bronchial irritation as may occur with a cold
- temporarily relieves these symptoms due to hay fever or other upper respiratory allergies:
 - itching of the nose or throat
 - runny nose
 - itchy, watery eyes
 - sneezing
- controls the impulse to cough to help you sleep

Warnings

Do not use

if you are now taking a prescription monoamine oxidase inhibitor (MAOI) (certain drugs for depression, psychiatric or emotional conditions, or Parkinson's disease), or for 2 weeks after stopping the MAOI drug. If you do not know if your prescription drug contains an MAOI, ask a doctor or pharmacist before taking this product.

Ask a doctor before use if you have

- a cough that occurs with too much phlegm (mucus)
- difficulty in urination due to enlargement of the prostate gland
- glaucoma
- a breathing problem or persistent or chronic cough as occurs with smoking, asthma, chronic bronchitis, or emphysema

Ask a doctor or pharmacist before use if you are

taking sedatives or tranquilizers.

When using this product

- marked drowsiness may occur
- avoid alcoholic drinks
- alcohol, sedatives, and tranquilizers may increase drowsiness
- use caution when driving a motor vehicle or operating machinery
- excitability may occur, especially in children

Stop use and ask a doctor if

cough persists more than 7 days, tends to recur, or is accompanied by a fever, rash, or persistent headache. These could be signs of a serious condition.

If pregnant or breast-feeding,

ask a health professional before use.

Keep out of reach of children.

In case of overdose, get medical help or contact a Poison Control Center right away

Directions

- **do not take more than directed**
- do not take more than 4 doses in any 24-hour period
- mL = milliliter
- only use the dose cup provided
- adults and children 12 years and over: 20 mL in dosing cup provided every 6 hours
- children under 12 years: do not use

Other information

- **each 20 mL contains:** sodium 14 mg
- store at 25°C (77°F); excursions permitted between 15°C-30°C (59°F-86°F)
- see end flap for expiration date and lot number

Inactive ingredients

anhydrous citric acid, FD&C blue #1, FD&C red #40, flavors, glycerin, high fructose corn syrup, polyethylene glycol, propylene glycol, purified water, sodium benzoate, sodium chloride, sodium citrate dihydrate, sucralose, sugar, xanthan gum

Questions or comments?

1-888-287-1915

Principal Display Panel

NDC 49035-943-19

equate™

Compare to
Robitussin®
Maximum Strength
Nighttime
Cough DM Active
Ingredients†

Maximum Strength

Nighttime

Tussin DM Max

Dextromethorphan HBr -
Cough Suppressant
Doxylamine Succinate -
Antihistamine

Nighttime Cough DM

Oral Solution

Relief of:

- Cough
- Itchy throat
- Runny nose

Ages 12 +

Dosage cup included

8 FL OZ (237 mL)

**TAMPER EVIDENT: DO NOT USE IF PRINTED
NECK WRAP IS BROKEN OR MISSING**

PARENTS:

Learn about teen medicine abuse
www.StopMedicineAbuse.org

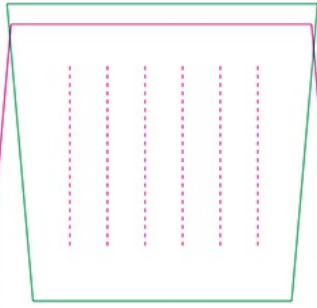
Satisfaction guaranteed – Or we'll replace it or give
you your money back. For questions or comments
or to report an undesired reaction or side effect,
please call **1-888-287-1915**.

**DISTRIBUTED BY: Walmart Inc.,
Bentonville, AR 72716**

†This product is not manufactured or distributed by
Haleon US Holdings LLC, owner of the registered
trademark Robitussin® Maximum Strength Nighttime
Cough DM.

50844

REV0123B04319



equate™
Maximum Strength
Nighttime
Tussin DM Max
 Dextromethorphan HBr -
 Cough Suppressant
 Doxylamine Succinate -
 Antihistamine
 Nighttime Cough DM



KEEP OUTER PACKAGE FOR COMPLETE PRODUCT INFORMATION

Drug Facts
Active ingredients (in each 20 mL) Purpose
 Dextromethorphan HBr 30 mg..... Cough suppressant
 Doxylamine succinate 12.5 mg..... Antihistamine

Uses
 ■ temporarily relieves cough due to minor throat and bronchial irritation as may occur with a cold
 ■ temporarily relieves these symptoms due to hay fever or other upper respiratory allergies:
 ■ itching of the nose or throat ■ runny nose
 ■ itchy, watery eyes ■ sneezing
 ■ controls the impulse to cough to help you sleep

Warnings
 Do not use if you are now taking a prescription monoamine oxidase inhibitor (MAOI) (certain drugs for depression, psychiatric or emotional conditions, or Parkinson's disease), or for 2 weeks after stopping the MAOI drug. If you do not know if your prescription drug contains an MAOI, ask a doctor or pharmacist before taking this product.
 Ask a doctor before use if you have
 ■ a cough that occurs with too much phlegm (mucus)
 ■ difficulty in urination due to enlargement of the prostate gland ■ glaucoma
 ■ a breathing problem or persistent or chronic cough as occurs with smoking, asthma, chronic bronchitis, or emphysema
 Ask a doctor or pharmacist before use if you are taking sedatives or tranquilizers.
 When using this product
 ■ marked drowsiness may occur
 ■ avoid alcoholic drinks
 ■ alcohol, sedatives, and tranquilizers may increase drowsiness
 ■ use caution when driving a motor vehicle or operating machinery
 ■ excitability may occur, especially in children
 Stop use and ask a doctor if cough persists more than 7 days, tends to recur, or is accompanied by a fever, rash, or persistent headache. These could be signs of a serious condition.
 If pregnant or breast-feeding, ask a health professional before use.
 Keep out of reach of children. In case of overdose, get medical help or contact a Poison Control Center right away.

Directions
 ■ do not take more than directed
 ■ do not take more than 4 doses in any 24-hour period
 ■ mL = milliliter ■ only use the dose cup provided
 ■ adults and children 12 years and over: 20 mL in dosing cup provided every 6 hours
 ■ children under 12 years: do not use

Drug Facts (continued)
Other information
 ■ each 20 mL contains: sodium 14 mg
 ■ store at 25°C (77°F); excursions permitted between 15°-30°C (59°-86°F)
 ■ see end flap for expiration date and lot number

Inactive ingredients anhydrous citric acid, FD&C blue #1, FD&C red #40, flavors, glycerin, high fructose corn syrup, polyethylene glycol, propylene glycol, purified water, sodium benzoate, sodium chloride, sodium citrate dihydrate, sucralose, sugar, xanthan gum

Questions or comments? 1-888-287-1915

Satisfaction guaranteed - Or we'll replace it or give you your money back. For questions or comments or to report an undesired reaction or side effect, please call 1-888-287-1915.

DISTRIBUTED BY: Walmart Inc., Bentonville, AR 72716
 This product is not manufactured or distributed by Haleon US Holdings LLC, owner of the registered trademark Robitussin® Maximum Strength Nighttime Cough DM.
 50844 REV0123B04319

PARENTS:
 Learn about teen medicine abuse
www.StopMedicineAbuse.org

TAMPER EVIDENT: DO NOT USE IF PRINTED NECK WRAP IS BROKEN OR MISSING



B-2203-043-19-R
 REV0123B04319

equate™

Compare to Robitussin® Maximum Strength Nighttime Cough DM Active Ingredients*

equate™

Compare to Robitussin® Maximum Strength Nighttime Cough DM Active Ingredients*

Maximum Strength
Nighttime
Tussin DM Max
 Dextromethorphan HBr -
 Cough Suppressant
 Doxylamine Succinate -
 Antihistamine
 Nighttime Cough DM
 Oral Solution

Relief of:
 • Cough
 • Itchy throat
 • Runny nose

Ages 12+

8 FL OZ (237 mL)

■ Dosage cup included

Maximum Strength
Nighttime
Tussin DM Max
 Dextromethorphan HBr -
 Cough Suppressant
 Doxylamine Succinate -
 Antihistamine
 Nighttime Cough DM
 Oral Solution

Relief of:
 • Cough
 • Itchy throat
 • Runny nose

Ages 12+

8 FL OZ (237 mL)

■ Dosage cup included



No Print/No Varnish
 Lot and Expiration No.

Equate 44-043

TUSSIN DM MAX NIGHTTIME
 dextromethorphan hbr, doxylamine succinate solution

Product Information

Product Type	HUMAN OTC DRUG	Item Code (Source)	NDC:49035-943
Route of Administration	ORAL		

Active Ingredient/Active Moiety

Ingredient Name	Basis of Strength	Strength
DEXTROMETHORPHAN HYDROBROMIDE (UNII: 9D2RTI9KYH) (DEXTROMETHORPHAN - UNII:7355X3ROTS)	DEXTROMETHORPHAN HYDROBROMIDE	30 mg in 20 mL
DOXYLAMINE SUCCINATE (UNII: V9BI9B5Y12) (DOXYLAMINE - UNII:95QB77JKPL)	DOXYLAMINE SUCCINATE	12.5 mg in 20 mL

Inactive Ingredients

Ingredient Name	Strength
ANHYDROUS CITRIC ACID (UNII: XF417D3PSL)	
FD&C BLUE NO. 1 (UNII: H3R47K3TBD)	
FD&C RED NO. 40 (UNII: WZB9127XOA)	
GLYCERIN (UNII: PDC6A3C0OX)	
HIGH FRUCTOSE CORN SYRUP (UNII: XY6UN3QB6S)	
POLYETHYLENE GLYCOL, UNSPECIFIED (UNII: 3WJQ05DW1A)	
PROPYLENE GLYCOL (UNII: 6DC9Q167V3)	
WATER (UNII: 059QF0KO0R)	
SODIUM BENZOATE (UNII: OJ245FE5EU)	
SODIUM CHLORIDE (UNII: 451W47IQ8X)	
TRISODIUM CITRATE DIHYDRATE (UNII: B22547B95K)	
SUCRALOSE (UNII: 96K6UQ3ZD4)	
SUCROSE (UNII: C151H8M554)	
XANTHAN GUM (UNII: TTV12P4NEE)	

Product Characteristics

Color	red (Maroon)	Score	
Shape		Size	
Flavor	MENTHOL, BERRY	Imprint Code	
Contains			

Packaging

#	Item Code	Package Description	Marketing Start Date	Marketing End Date
1	NDC:49035-943-19	1 in 1 CARTON	08/15/2018	
1		237 mL in 1 BOTTLE; Type 0: Not a Combination Product		

Marketing Information

Marketing Category	Application Number or Monograph Citation	Marketing Start Date	Marketing End Date

OTC Monograph Drug	M012	08/15/2018	
--------------------	------	------------	--

Labeler - Wal-Mart Stores Inc (051957769)

Establishment

Name	Address	ID/FEI	Business Operations
LNK International, Inc.		967626305	manufacture(49035-943) , pack(49035-943)

Revised: 3/2025

Wal-Mart Stores Inc