

DEXTROSE- dextrose monohydrate injection, solution
Medical Purchasing Solutions, LLC

Disclaimer: This drug has not been found by FDA to be safe and effective, and this labeling has not been approved by FDA. For further information about unapproved drugs, click here.

50% Dextrose Injection, USP

Concentrated Dextrose for
Intravenous Administration

**NOTE: This solution is hypertonic -
See WARNINGS and PRECAUTIONS.**

LifeShield™ Abboject® Syringe
Fliptop Container
Ansyr™ Plastic Syringe
Ansyr™ Plastic
Syringe
only

Rx

DESCRIPTION

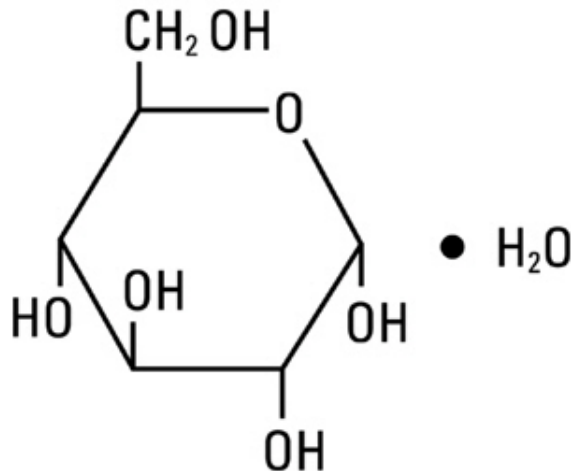
50% Dextrose Injection, USP is a sterile, nonpyrogenic, hypertonic solution of dextrose in water for injection for intravenous injection as a fluid and nutrient replenisher.

Each mL of fluid contains 0.5 g dextrose, hydrous which delivers 3.4 kcal/gram. The solution has an osmolarity of 2.53 mOsmol/mL (calc.), a pH of 3.2 to 6.5 and may contain sodium hydroxide and/or hydrochloric acid for pH adjustment.

The solution contains no bacteriostat, antimicrobial agent or added buffer (except for pH adjustment) and is intended only for use as a single-dose injection. When smaller doses are required, the unused portion should be discarded with the entire unit.

Dextrose, USP is chemically designated $C_6H_{12}O_6 \cdot H_2O$ (D-glucose monohydrate), a hexose sugar freely soluble in water.

Dextrose, hydrous has the following structural formula:



Water for Injection, USP is chemically designated H_2O .

The syringe is molded from a specially formulated polypropylene. Water permeates from

inside the container at an extremely slow rate which will have an insignificant effect on solution concentration over the expected shelf life. Solutions in contact with the plastic container may leach out certain chemical components from the plastic in very small amounts; however, biological testing was supportive of the safety of the syringe material.

CLINICAL PHARMACOLOGY

When administered intravenously this solution restores blood glucose levels in hypoglycemia and provides a source of carbohydrate calories.

Carbohydrate in the form of dextrose may aid in minimizing liver glycogen depletion and exerts a protein-sparing action. Dextrose injection undergoes oxidation to carbon dioxide and water.

Water is an essential constituent of all body tissues and accounts for approximately 70% of total body weight. Average normal adult requirement ranges from two to three liters (1.0 to 1.5 liters each for insensible water loss by perspiration and urine production).

Water balance is maintained by various regulatory mechanisms. Water distribution depends primarily on the concentration of electrolytes in the body compartments and sodium (Na^+) plays a major role in maintaining physiologic equilibrium.

INDICATIONS AND USAGE

50% Dextrose Injection is indicated in the treatment of insulin hypoglycemia (hyperinsulinemia or insulin shock) to restore blood glucose levels.

The solution is also indicated, after dilution, for intravenous infusion as a source of carbohydrate calories in patients whose oral intake is restricted or inadequate to maintain nutritional requirements. Slow infusion of hypertonic solutions is essential to insure proper utilization of dextrose and avoid production of hyperglycemia.

CONTRAINDICATIONS

A concentrated dextrose solution should not be used when intracranial or intraspinal hemorrhage is present, nor in the presence of delirium tremens if the patient is already dehydrated.

Dextrose injection without electrolytes should not be administered simultaneously with blood through the same infusion set because of the possibility that pseudoagglutination of red cells may occur.

WARNINGS

50% Dextrose Injection is hypertonic and may cause phlebitis and thrombosis at the site of injection.

Significant hyperglycemia and possible hyperosmolar syndrome may result from too rapid administration. The physician should be aware of the symptoms of hyperosmolar syndrome, such as mental confusion and loss of consciousness, especially in patients with chronic uremia and those with known carbohydrate intolerance.

The intravenous administration of this solution can cause fluid and/or solute overloading resulting in dilution of serum electrolyte concentrations, overhydration, congested states or pulmonary edema.

Additives may be incompatible. Consult with pharmacist if available. When introducing additives, use aseptic technique, mix thoroughly and do not store.

For peripheral vein administration:

The solution should be given slowly, preferably through a small bore needle into a large vein, to minimize venous irritation.

For central venous administration:

Concentrated dextrose should be administered via central vein only after suitable dilution.

PRECAUTIONS

Do not use unless the solution is clear and seal is intact. Discard unused portion.

Electrolyte deficits, particularly in serum potassium and phosphate, may occur during prolonged use of concentrated dextrose solutions. Blood electrolyte monitoring is essential and fluid and electrolyte imbalances should be corrected. Essential vitamins and minerals also should be provided as needed.

To minimize hyperglycemia and consequent glycosuria, it is desirable to monitor blood and urine glucose and if necessary, add insulin.

When a concentrated dextrose infusion is abruptly withdrawn, it is advisable to follow with the administration of 5% or 10% dextrose injection to avoid rebound hypoglycemia.

Solutions containing dextrose should be used with caution in patients with known subclinical or overt diabetes mellitus.

Care should be exercised to insure that the needle is well within the lumen of the vein and that extravasation does not occur. If thrombosis should occur during administration, the injection should be stopped and corrective measures instituted.

Concentrated dextrose solutions should not be administered subcutaneously or intramuscularly.

Carcinogenesis, Mutagenesis, Impairment of Fertility: Studies with solutions in polypropylene syringes have not been performed to evaluate carcinogenic potential, mutagenic potential or effects on fertility.

Pregnancy Category C. Animal reproduction studies have not been conducted with dextrose. It is also not known whether dextrose can cause fetal harm when administered to a pregnant woman or can affect reproduction capacity. Dextrose should be given to a pregnant woman only if clearly needed.

Nursing Mothers

It is not known whether this drug is excreted in human milk. Because many drugs are excreted in human milk, caution should be exercised when 50% Dextrose Injection, USP is administered to a nursing mother.

ADVERSE REACTIONS

Hyperosmolar syndrome, resulting from excessively rapid administration of concentrated dextrose may cause mental confusion and/or loss of consciousness.

Reactions which may occur because of the solution or the technique of administration include febrile response, infection at the site of injection, venous thrombosis or phlebitis extending from the site of injection, extravasation and hypervolemia.

If an adverse reaction does occur, discontinue the infusion, evaluate the patient, institute appropriate therapeutic countermeasures and save the remainder of the fluid for examination if deemed necessary.

OVERDOSAGE

In the event of overhydration or solute overload during therapy, re-evaluate the patient and institute appropriate corrective measures. See **WARNINGS** and **PRECAUTIONS**.

DOSAGE AND ADMINISTRATION

For peripheral vein administration:

Injection of the solution should be made *slowly*.

The maximum rate at which dextrose can be infused without producing glycosuria is 0.5 g/kg of body weight/hour. About 95% of the dextrose is retained when infused at a rate of 0.8 g/kg/hr.

In insulin-induced hypoglycemia, intravenous injection of 10 to 25 grams of dextrose (20 to 50 mL of 50% dextrose) is usually adequate. Repeated doses and supportive treatment may be required in severe cases. A specimen for blood glucose determination should be taken before injecting the dextrose. In such emergencies, dextrose should be administered promptly without awaiting pretreatment test results.

For central venous administration:

For total parenteral nutrition 50% Dextrose Injection, USP is administered by slow intravenous infusion (a) after admixture with amino acid solutions via an indwelling catheter with the tip positioned in a large central vein, preferably the superior vena cava, or (b) after dilution with sterile water for injection. Dosage should be adjusted to meet individual patient requirements.

Clinical evaluation and periodic laboratory determinations are necessary to monitor changes in fluid balance, electrolyte concentrations and acid-base balance during prolonged parenteral therapy or whenever the condition of the patient warrants such evaluation.

The maximum rate of dextrose administration which does not result in glycosuria is the same as cited above.

Parenteral drug products should be inspected visually for particulate matter and discoloration prior to administration, whenever solution and container permit. See **CONTRAINDICATIONS**.

HOW SUPPLIED

50% Dextrose Injection, USP is supplied in single-dose containers as follows:

NDC No.	Container	Size
0409-4902-34	Lifeshield™ Abboject® Unit of Use Syringe with male luer lock adapter and protected needle	25 g in 50 mL
0409-6648-02	Fliptop Vial	25 g in 50 mL
0409-7517-15	Ansyrtm Plastic Syringe	25 g in 50 mL
0409-7517-16	Ansyrtm II Plastic Syringe	25 g in 50 mL

Exposure of pharmaceutical products to heat should be minimized. Avoid excessive heat. Protect from freezing. Store at 20 to 25°C (68 to 77°F). [See USP Controlled Room Temperature.]

LAB-1027-1.0

May, 2017

Printed in USA

Hospira, Inc., Lake Forest, IL 60045 USA



Abboject[®] is a trademark of the Abbott group of companies.

LIFESHIELD[®] is the trademark of ICU Medical, Inc. and is used under license.

PRINCIPAL DISPLAY PANEL - 50 mL Syringe Label - 0409-4902-34

50% DEXTROSE

50 mL Single-dose

Rx only

50% DEXTROSE Inj., USP

25 g/50 mL (0.5 g/mL)

For I.V. use. Usual dosage: See insert.

Sterile, nonpyrogenic.

2.53 mOsmol/mL (calc.)

pH 3.2 to 6.5

50% DEXTROSE



50 mL Single-dose

Rx only

NDC 0409-4902-34

50% DEXTROSE Inj., USP 25 g/50 mL (0.5 g/mL)

For I.V. use. Usual dosage: See insert.
Sterile, nonpyrogenic.
2.53 mOsmol/mL (calc.)
pH 3.2 to 6.5



RL-6907



(01)00304094902340

Hospira, Inc., Lake Forest, IL 60045 USA

PRINCIPAL DISPLAY PANEL - 50 mL Syringe Carton - 0409-4902-34

50 mL

50%

DEXTROSE

Injection, USP

25 g/50 mL (0.5 g/mL)

LIFESHIELD[®]

Glass

ABBOJECT[®]

Unit of Use Syringe

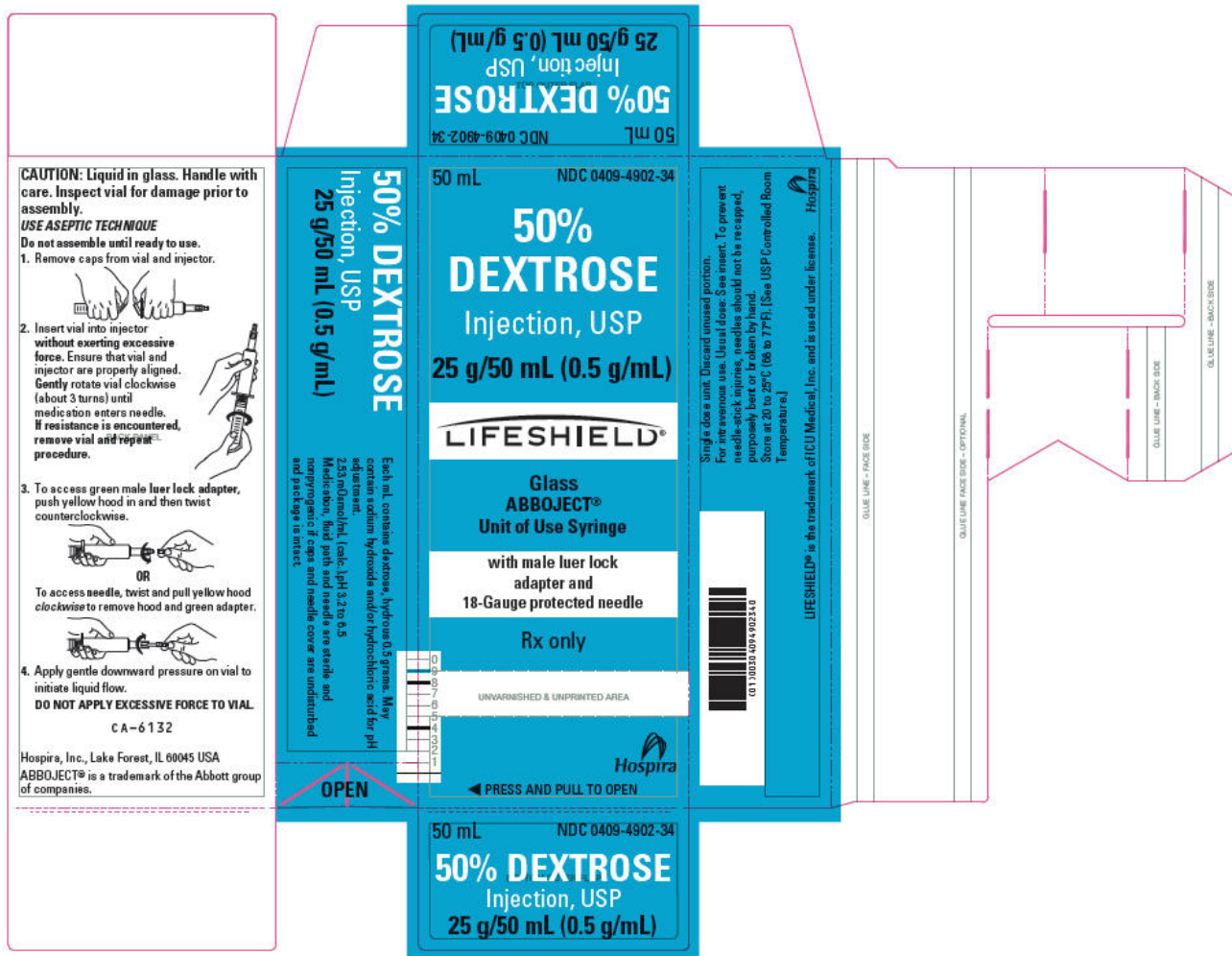
with male luer lock

adapter and

18-Gauge protected needle

Rx only

◀ PRESS AND PULL TO OPEN



PRINCIPAL DISPLAY PANEL - 50 mL Syringe OUTER PACKAGE LABEL

NDC 71872-7102-1

50% Dextrose Injection, USP

25g/50 mL (0.5g/mL)

RxOnly

1 x Unit of Use Syringe



Rx only



(01) 0 0371872 71021 3
(17) 000101
(10) XXXX:XXXXX
(21) 7102A000000

50% Dextrose Injection, USP
25 g/50 mL (0.5 g/mL)

Qty: 1 Box Lot# XXXX-XXXXX Exp: 01/01/1900

Glass ABBJECT® Unit of Use Syringe
with male luer lock adaptor and 18-Gauge protected needle
Single dose unit. Discard unused portion. For intravenous use. Usual dose:
See insert. To prevent needle-stick injuries, needles should not be recapped,
purposely bent or broken by hand.

Store at 20° - 25°C (68°-77°F). [see USP Controlled Room Temperature.]
Each mL contains dextrose, hydrous 0.5 grams. May contain sodium
hydroxide and/or hydrochloric acid for pH adjustment. 2.53mOsmol/mL
(calc.) pH 3.2 to 6.5. Medication, fluid path and needle are sterile and
nonpyrogenic if caps and needle cover are undisturbed and package
is intact.

Manufactured By: Hospira, Inc.
Manufacturer NDC: 00409-4902-34

Repackaged
& Distributed By:



Medical Purchasing Solutions
Scottsdale, AZ 85260
www.medicalpurchasingsolutions.com

DEXTROSE

dextrose monohydrate injection, solution

Product Information

Product Type	HUMAN PRESCRIPTION DRUG	Item Code (Source)	NDC:71872-7102(NDC:0409- 4902)
Route of Administration	INTRAVENOUS		

Active Ingredient/Active Moiety

Ingredient Name	Basis of Strength	Strength
DEXTROSE MONOHYDRATE (UNII: LX22YL083G) (ANHYDROUS DEXTROSE - UNII:5SL0G7R0OK)	DEXTROSE MONOHYDRATE	25 g in 50 mL

Inactive Ingredients

Ingredient Name	Strength
WATER (UNII: 059QF0KO0R)	
SODIUM HYDROXIDE (UNII: 55X04QC32I)	
HYDROCHLORIC ACID (UNII: QTT17582CB)	

Packaging

#	Item Code	Package Description	Marketing Start Date	Marketing End Date
1	NDC:71872- 7102-1	1 in 1 BAG	03/05/2018	
1		1 in 1 CARTON		
1		50 mL in 1 SYRINGE; Type 1: Convenience Kit of Co-Package		

Marketing Information

Marketing Category	Application Number or Monograph Citation	Marketing Start Date	Marketing End Date
unapproved drug other		12/07/2005	

Labeler - Medical Purchasing Solutions, LLC (601458529)

Establishment

Name	Address	ID/FEI	Business Operations
Medical Purchasing Solutions, LLC		601458529	repack(71872-7102)

Revised: 10/2022

Medical Purchasing Solutions, LLC