

**BIOELECTRO EXTRA STRENGTH HEADACHE RELIEF- acetaminophen, aspirin,  
and caffeine tablet**  
**Genomma Lab USA**

-----  
**BioElectro® Extra Strength Headache Relief**

***Drug Facts***

<b><i>Active ingredients (in each caplet )</i></b>	<b><i>Purpose</i></b>
Acetaminophen 250 mg	Pain reliever
Aspirin 250 mg (NSAID*)	Pain reliever
Caffeine 65 mg	Pain reliever aid

\* Nonsteroidal anti-inflammatory drug

**Uses**

temporarily relieves minor aches and pains due to:

- headache
- a cold
- arthritis
- muscular aches
- toothache
- premenstrual & menstrual cramps

**Warnings**

**Reye's syndrome**

Children and teenagers who have or are recovering from chicken pox or flu-like symptoms should not use this product. When using this product, if changes in behavior with nausea and vomiting occur, consult a doctor because these symptoms could be an early sign of Reye's syndrome, a rare but serious illness.

**Allergy alert**

Acetaminophen may cause severe skin reactions such as

- reddening
- blisters
- rash.

If skin reactions occur, stop use and see a doctor right away. Aspirin may cause a severe allergic reaction, which may include: hives, facial swelling, asthma (wheezing), or shock.

**Liver warning**

This product contains acetaminophen. Severe liver damage may occur if you take:

- more than 8 caplets in 24 hours, which is the maximum daily amount
- with other drugs containing acetaminophen
- 3 or more alcoholic drinks every day while using this product.

### **Stomach bleeding warning**

- This product contains an (NSAID), which may cause severe stomach bleeding. The chance is higher if you
  - are age 60 or older
  - have had stomach ulcers or bleeding problems
  - take a blood thinning (anticoagulant) or steroid drug.
  - take other drugs containing prescription or nonprescription NSAIDs (aspirin, ibuprofen, naproxen, or others)
  - have 3 or more alcoholic drinks every day while using this product
  - take more or for a longer time than directed.

### **Caffeine warning**

The recommended dose of this product contains about as much caffeine as a cup of coffee. Limit the use of caffeine-containing medications, foods, or beverages while taking this product because too much caffeine may cause nervousness, irritability, sleeplessness, and, occasionally, rapid heartbeat.

### **Do not use**

- if you ever had an allergic reaction to acetaminophen, aspirin, or any pain reliever/fever reducer
- with any other drug containing acetaminophen (prescription or nonprescription). If you are not sure whether a drug contains acetaminophen, ask a doctor or pharmacist.

### **Ask a doctor before use if**

- you have liver disease
- the stomach bleeding warning applies to you
- you have a history of stomach problems, such as heartburn
- you have high blood pressure, heart disease, liver cirrhosis, or kidney disease
- you have asthma
- you are taking a diuretic.

### **Ask a doctor or pharmacist before use if you are taking**

- any other drug containing an NSAID (prescription or nonprescription)
- a blood thinning (anticoagulant) or steroid drug
- a prescription drug for diabetes, gout or arthritis
- any other drug, or are under a doctor's care for any serious condition.

### **Stop use and ask a doctor if**

- an allergic reaction occurs. Seek medical help right away.
- you experience any of the following signs of stomach bleeding: feel faint, vomit blood, have bloody or black stools, have stomach pain that does not get better.
- ringing in the ears or loss of hearing occurs
- painful area is red or swollen
- pain gets worse or lasts for more than 10 days

- fever get worse or lasts for more than 3 days
- any new symptoms appear.

**If pregnant or breast-feeding,** ask a health professional before use. It is especially important not to use aspirin during the last 3 months of pregnancy unless definitely directed to do so by a doctor because it may cause problems in the unborn child or complications during delivery.

**Keep out of reach of children.** In case of overdose, get medical help or contact a Poison Control Center right away (1-800-222-1222). Quick medical attention is critical even if there are no symptoms.

### **Directions**

- **do not use more than directed**
- drink a full glass of water with each dose
- adults and children 12 years and over: take 2 caplets every 6 hours; not more than 8 caplets in 24 hours
- children under 12 years: ask a doctor

### **Other information**

- store at room temperature 20-25°C (68°-77°F)
- close cap tightly after use
- read all product information before using. Keep this carton for Drug facts.

### **Inactive ingredients**

hypromellose, microcrystalline cellulose, polyethylene glycol, polyvinylpyrrolidone, pregelatinized starch, silicon dioxide, stearic acid, talc

### **Questions or comments?**

**1-877-994-3666** Monday to Friday from 8 am to 6 pm, Central Time.

### **Distributed by:**

**Genomma Lab USA Inc., Houston,  
TX 77098**

### **PRINCIPAL DISPLAY PANEL - 24 Caplet Bottle Carton**

Bio  
Electro®

HEADACHE

EXTRA STRENGTH

Acetaminophen / Aspirin (NSAID) and Caffeine  
Pain Reliever / Pain reliever aid

24 CAPLETS



### Drug Facts (continued)

If **pregnant or breast-feeding**, ask a health professional before use. It is especially important not to use aspirin during the last 3 months of pregnancy unless definitely directed to do so by a doctor because it may cause problems in the unborn child or complications during delivery.

**Keep out of reach of children.** In case of overdose, get medical help or contact a Poison Control Center right away (1-800-222-1222). Quick medical attention is critical even if there are no symptoms.

**Directions** ■ **do not use more than directed** ■ drink a full glass of water with each dose ■ adults and children 12 years and over: take 2 caplets every 6 hours; not more than 8 caplets in 24 hours ■ children under 12 years: ask a doctor

**Other information** ■ store at room temperature 20-25°C (68°-77°F) ■ close cap tightly after use ■ read all product information before using. Keep this carton for Drug facts.

**Inactive ingredients** hypromellose, microcrystalline cellulose, polyethylene glycol, polyvinylpyrrolidone, pregelatinized starch, silicon dioxide, stearic acid, talc

**Questions or comments?** 1-877-994-3666 Monday to Friday from 8 am to 6 pm, Central Time.



**Do not use if imprinted safety seal under cap is broken or missing.**  
**No utilizar si el sello de seguridad impreso debajo de la tapa está roto o faltante.**

**Spanish information inside pack / Información en español dentro del empaque.**

# Bio Electro

HEADACHE  
DOLOR DE CABEZA

EXTRA STRENGTH / EXTRA FUERTE

Acetaminophen / Aspirin (NSAID) and caffeine Acetaminofén / Aspirina (AINE) y cafeína  
Pain Reliever / Dolor Reductor / Analgésico / Ayuda a aliviar el dolor

24 CAPLETS  
COMPRIMIDOS

### Drug Facts

#### Active ingredients (in each caplet)

#### Purpose

Acetaminophen 250 mg ..... Pain reliever  
Aspirin 250 mg (NSAID)\* ..... Pain reliever  
Caffeine 65 mg ..... Pain reliever aid  
\*Nonsteroidal anti-inflammatory drug

**Uses** temporarily relieves minor aches and pains due to: ■ headache ■ a cold ■ arthritis  
■ muscular aches ■ toothache ■ premenstrual & menstrual cramps

#### Warnings

**Reye's syndrome:** Children and teenagers who have or are recovering from chicken pox or flu-like symptoms should not use this product. When using this product, if changes in behavior with nausea and vomiting occur, consult a doctor because these symptoms could be an early sign of Reye's syndrome, a rare but serious illness. **Allergy alert:** Acetaminophen may cause severe skin reactions such as ■ reddening ■ blisters ■ rash. If skin reactions occur, stop use and see a doctor right away. Aspirin may cause a severe allergic reaction, which may include: hives, facial swelling, asthma (wheezing), or shock. **Liver warning:** This product contains acetaminophen. Severe liver damage may occur if you take: ■ more than 8 caplets in 24 hours, which is the maximum daily amount ■ with other drugs containing acetaminophen ■ 3 or more alcoholic drinks every day while using this product.

**Stomach bleeding warning:** ■ This product contains an (NSAID), which may cause severe stomach bleeding. The chance is higher if you ■ are age 60 or older ■ have had stomach ulcers or bleeding problems ■ take a blood thinning (anticoagulant) or steroid drug. ▼

### Drug Facts (continued)

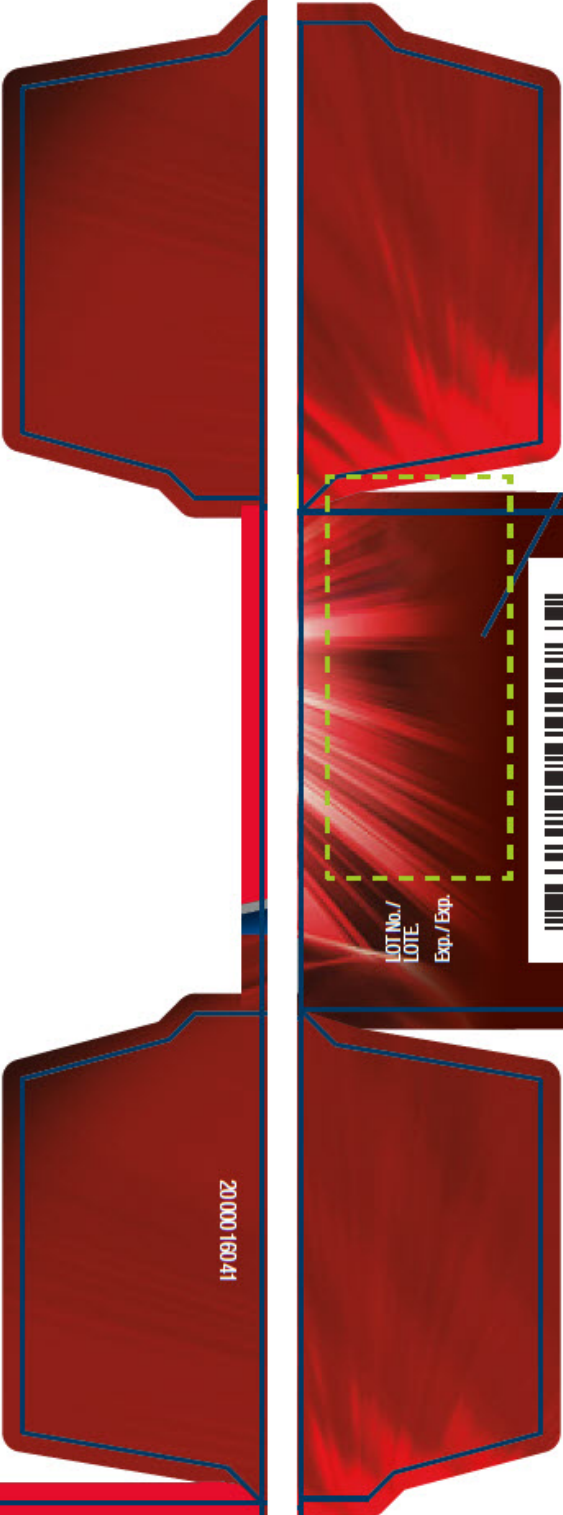
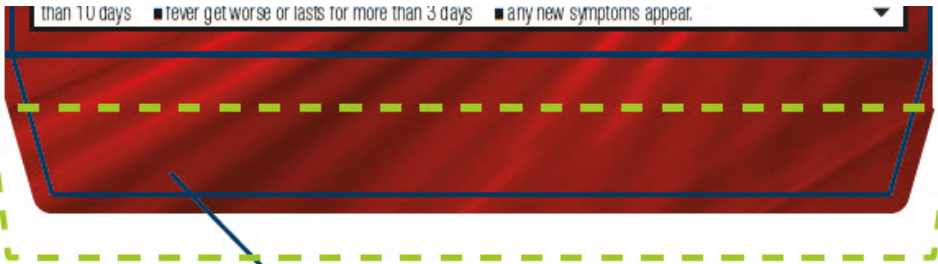
■ take other drugs containing prescription or nonprescription NSAIDs (aspirin, ibuprofen, naproxen, or others) ■ have 3 or more alcoholic drinks every day while using this product ■ take more or for a longer time than directed. **Caffeine warning:** The recommended dose of this product contains about as much caffeine as a cup of coffee. Limit the use of caffeine-containing medications, foods, or beverages while taking this product because too much caffeine may cause nervousness, irritability, sleeplessness, and, occasionally, rapid heartbeat.

**Do not use** ■ if you ever had an allergic reaction to acetaminophen, aspirin, or any pain reliever/fever reducer ■ with any other drug containing acetaminophen (prescription or nonprescription). If you are not sure whether a drug contains acetaminophen, ask a doctor or pharmacist.

**Ask a doctor before use if** ■ you have liver disease ■ the stomach bleeding warning applies to you ■ you have a history of stomach problems, such as heartburn ■ you have high blood pressure, heart disease, liver cirrhosis, or kidney disease ■ you have asthma ■ you are taking a diuretic.

**Ask a doctor or pharmacist before use if you are taking** ■ any other drug containing an NSAID (prescription or nonprescription) ■ a blood thinning (anticoagulant) or steroid drug ■ a prescription drug for diabetes, gout or arthritis ■ any other drug, or are under a doctor's care for any serious condition.

**Stop use and ask a doctor if** ■ an allergic reaction occurs. Seek medical help right away. ■ you experience any of the following signs of stomach bleeding: feel faint, vomit blood, have bloody or black stools, have stomach pain that does not get better. ■ ringing in the ears or loss of hearing occurs ■ painful area is red or swollen ■ pain gets worse or lasts for more







# BIOELECTRO EXTRA STRENGTH HEADACHE RELIEF

acetaminophen, aspirin, and caffeine tablet

Product Information			
Product Type	HUMAN OTC DRUG	Item Code (Source)	NDC:50066-630
Route of Administration	ORAL		
Active Ingredient/Active Moiety			
Ingredient Name		Basis of Strength	Strength
acetaminophen (UNII: 362O9ITL9D) (acetaminophen - UNII:362O9ITL9D)		acetaminophen	250 mg
aspirin (UNII: R16CO5Y76E) (aspirin - UNII:R16CO5Y76E)		aspirin	250 mg
caffeine (UNII: 3G6A5W338E) (caffeine - UNII:3G6A5W338E)		caffeine	65 mg
Inactive Ingredients			
Ingredient Name			Strength
HYPROMELLOSE, UNSPECIFIED (UNII: 3NXW29V3WO)			
microcrystalline cellulose (UNII: OP1R32D61U)			
POLYETHYLENE GLYCOL, UNSPECIFIED (UNII: 3WJQ0SDW1A)			
POVIDONE K90 (UNII: RDH86HJV5Z)			
STARCH, CORN (UNII: O8232NY3SJ)			
silicon dioxide (UNII: ETJ7Z6XBU4)			
Product Characteristics			
Color	WHITE	Score	no score
Shape	ROUND	Size	11mm
Flavor		Imprint Code	AZ;285
Contains			

## Packaging

#	Item Code	Package Description	Marketing Start Date	Marketing End Date
1	NDC:50066-630-24	1 in 1 CARTON	12/26/2025	
1		24 in 1 BOTTLE, PLASTIC; Type 0: Not a Combination Product		

## Marketing Information

Marketing Category	Application Number or Monograph Citation	Marketing Start Date	Marketing End Date
OTC Monograph Drug	M013	12/26/2025	

**Labeler** - Genomma Lab USA (832323534)

## Establishment

Name	Address	ID/FEI	Business Operations
Allegiant Health		079501930	MANUFACTURE(50066-630) , PACK(50066-630) , LABEL(50066-630)

Revised: 12/2025

Genomma Lab USA