

**CREST ANTI-CAVITY REGULAR- sodium fluoride paste, dentifrice**  
**Procter & Gamble Manufactura S de RL de CV**

-----  
**Crest** ®

**ANTI-CAVITY**

**Regular Paste**

***Drug Facts***

**Active ingredient**

Sodium fluoride 0.243% (0.15% w/v fluoride ion)

**Purpose**

Anticavity toothpaste

**Use**

helps protect against cavities

**Warnings**

**Keep out of reach of children under 6 yrs. of age.** If more than used for brushing is accidentally swallowed, get medical help or contact a Poison Control Center right away.

**Directions**

- adults and children 2 yrs. & older: brush teeth thoroughly after meals or at least twice a day or use as directed by a dentist
  - do not swallow
  - to minimize swallowing use a pea-sized amount in children under 6
  - supervise children's brushing until good habits are established
- children under 2 yrs.: ask a dentist

**Inactive ingredients**

sorbitol, water, hydrated silica, sodium lauryl sulfate, trisodium phosphate, flavor, sodium phosphate, cellulose gum, sodium saccharin, carbomer, titanium dioxide

**Questions?**

**1-800-543-7270**

Dist. by Procter & Gamble,  
Cincinnati OH 45202

**PRINCIPAL DISPLAY PANEL - 99 g Carton**

***Crest***<sup>®</sup>

***FLUORIDE ANTICAVITY TOOTHPASTE***

***NET WT 3.5 OZ (99 g)***

***ANTI-CAVITY***

***Regular Paste***

**Drug Facts**

**Active ingredient**

Sodium fluoride 0.243% (0.15% w/v fluoride ion),.....Anticavity toothpaste

**Purpose**

**Use** helps protect against cavities

**Warnings**

Keep out of reach of children under 6 yrs. of age. If more than used for brushing is accidentally swallowed, get medical help or contact a Poison Control Center right away.

**Directions**

adults and children 2 yrs. & older: brush teeth thoroughly after meals

**Drug Facts (continued)**

or at least twice a day or use as directed by a dentist

- do not swallow
- to minimize swallowing use a pea-sized amount in children under 6
- supervise children's brushing until good habits are established
- children under 2 yrs.: ask a dentist

**Inactive ingredients** sorbitol, water, hydrated silica, sodium lauryl sulfate, trisodium phosphate, flavor, sodium phosphate, cellulose gum, sodium saccharin, carbomer, titanium dioxide

**Questions?** 1-800-543-7270

Div. of Procter & Gamble  
Cincinnati OH 45202  
[www.crest.com](http://www.crest.com)

QUIET ZONE

UPC  
7&G  
100% Print  
For US  
Version A  
Area Only

QUIET ZONE

0 37000 22921 6

# Crest

FLUORIDE ANTICAVITY TOOTHPASTE NET WT 3.5 OZ (99 g)

## ANTI-CAVITY

Regular Paste

# Crest

FLUORIDE ANTICAVITY TOOTHPASTE NET WT 3.5 OZ (99 g)

## ANTI-CAVITY

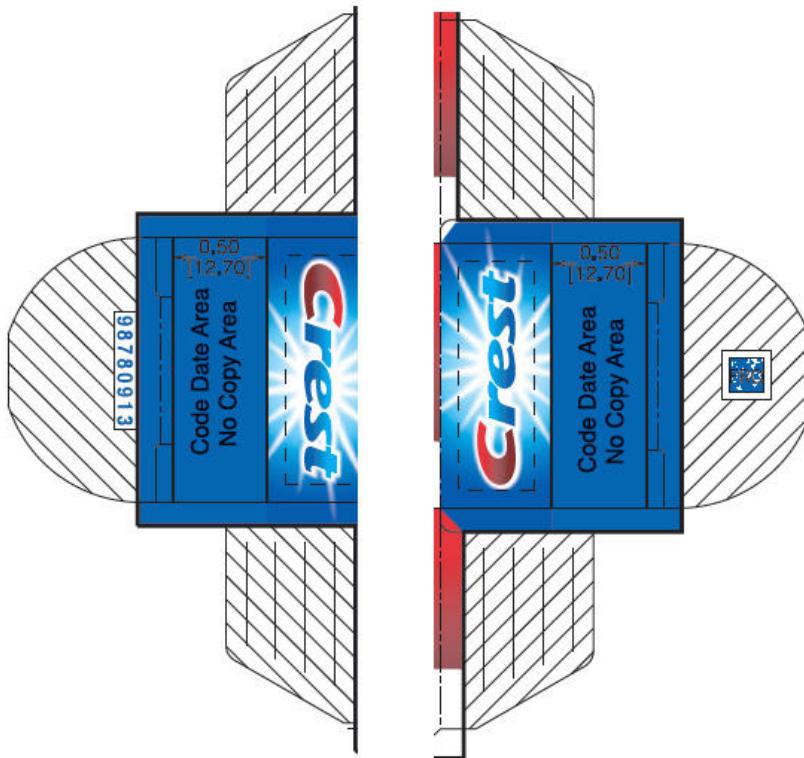
Regular Paste

# Crest

FLUORIDE ANTICAVITY TOOTHPASTE NET WT 3.5 OZ (99 g)

## ANTI-CAVITY

Regular Paste



# CREST ANTI-CAVITY REGULAR

sodium fluoride paste, dentifrice

## Product Information

<b>Product Type</b>	HUMAN OTC DRUG	<b>Item Code (Source)</b>	NDC:58933-470
<b>Route of Administration</b>	DENTAL		

## Active Ingredient/Active Moiety

Ingredient Name	Basis of Strength	Strength
<b>SODIUM FLUORIDE</b> (UNII: 8ZYQ1474W7) (FLUORIDE ION - UNII:Q80VPU408O)	FLUORIDE ION	1.5 mg in 1 g

## Inactive Ingredients

Ingredient Name	Strength
<b>SORBITOL</b> (UNII: 506T60A25R)	
<b>WATER</b> (UNII: 059QF0KO0R)	
<b>HYDRATED SILICA</b> (UNII: Y607T4G8P9)	
<b>SODIUM LAURYL SULFATE</b> (UNII: 368GB5141J)	
<b>SODIUM PHOSPHATE</b> (UNII: SE337SVY37)	
<b>CARBOXYMETHYLCELLULOSE SODIUM</b> (UNII: K679OBS311)	
<b>SACCHARIN SODIUM</b> (UNII: SB8ZUX40TY)	
<b>TITANIUM DIOXIDE</b> (UNII: 15FIX9V2JP)	

## Product Characteristics

<b>Color</b>	white	<b>Score</b>	
<b>Shape</b>		<b>Size</b>	
<b>Flavor</b>	PEPPERMINT	<b>Imprint Code</b>	
<b>Contains</b>			

## Packaging

#	Item Code	Package Description	Marketing Start Date	Marketing End Date
1	NDC:58933-470-03	1 in 1 CARTON	08/01/2008	
1		99 g in 1 TUBE; Type 0: Not a Combination Product		

## Marketing Information

Marketing Category	Application Number or Monograph Citation	Marketing Start Date	Marketing End Date
OTC Monograph Drug	M021	08/01/2008	

Revised: 12/2023

Procter & Gamble Manufactura S de RL de CV