

NAPROXEN, naproxen tablet, delayed release
Pfizer Inc. R, L.P.

Naproxen Delayed-release Tablets USP, 375 mg and 500 mg
Rx only

WARNING: RISK OF SERIOUS CARDIOVASCULAR AND GASTROINTESTINAL EVENTS

Cardiovascular Thrombotic Events

- Nonsteroidal anti-inflammatory drugs (NSAIDs) cause an increased risk of serious cardiovascular thrombotic events, including myocardial infarction and stroke, which can be fatal. This risk may occur early in treatment and may increase with duration of use (see WARNINGS).
- Naproxen delayed-release tablets are contraindicated in the setting of coronary artery bypass graft (CABG) surgery (see CONTRAINDICATIONS, WARNINGS).

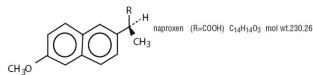
Gastrointestinal Bleeding, Ulceration, and Perforation

NSAIDs cause an increase in risk of serious gastrointestinal (GI) adverse events including bleeding, ulceration, and perforation of the stomach or intestines, which can be fatal. These events can occur at any time during use and without warning symptoms. Elderly patients and patients with a prior history of peptic ulcer disease and/or GI bleeding are at greater risk for serious GI events (see WARNINGS).

DESCRIPTION

Naproxen, USP is a propionic acid derivative related to the arylacetic acid group of nonsteroidal anti-inflammatory drugs.

The chemical name for naproxen, USP is (S)-6-methoxy- α -methyl-2-naphthoic acid. It has the following structural formula:



CH₃

Naproxen, USP has a molecular weight of 230.26 and a molecular formula of C₁₄H₁₉O₃.

Naproxen, USP is an odorless, white to off-white crystalline substance. It is lipid-soluble, practically insoluble in water at low pH and freely soluble in water at high pH. The octanol/water partition coefficient of naproxen at pH 7.4 is 1.6 to 1.8.

Naproxen delayed-release tablets, USP are available as enteric coated, white tablets containing 375 mg of naproxen and 500 mg of naproxen, USP for oral administration. The inactive ingredients are croscarmellose sodium, polyvinyl alcohol, colloidal silicon dioxide and magnesium stearate. The enteric coating dispersion contains methacrylic acid copolymer dispersion, talc, titanium dioxide, triethyl citrate and purified water. The dissolution of this enteric-coated naproxen tablet is pH dependent with rapid dissolution above pH 6. There is no dissolution below pH 4.

CLINICAL PHARMACOLOGY

Mechanism of Action

Naproxen has analgesic, anti-inflammatory, and antipyretic properties. The sodium salt of naproxen has been developed as a more rapidly absorbed formulation of naproxen for use as an analgesic.

The mechanism of action of the naproxen, like that of other NSAIDs, is not completely understood but involves inhibition of cyclooxygenase (COX-1 and COX-2).

Naproxen is a potent inhibitor of prostaglandin synthesis in vivo. Naproxen concentrations reached during therapy have produced in vivo effects. Prostaglandins sensitize afferent nerves and potentiate the action of bradykinin in inducing pain in animal models. Prostaglandins are mediators of inflammation. Because naproxen is an inhibitor of prostaglandin synthesis, its mode of action may be due to a decrease of prostaglandins in peripheral tissues.

Pharmacokinetics

Naproxen is rapidly and completely absorbed from the gastrointestinal tract with an in vivo bioavailability of 55%. The different dosage forms of naproxen are bioequivalent in terms of extent of absorption (AUC) and peak concentration (C_{max}); however, the products do differ in their pattern of absorption. These differences between naproxen products are related to both the chemical form of naproxen used and its formulation. Even with the observed differences in pattern of absorption, the elimination half-life of naproxen is unchanged across products ranging from 12 to 17 hours. Steady-state levels of naproxen are reached in 4 to 5 days, and the degree of naproxen accumulation is consistent with this half-life. This suggests that the differences in pattern of release play only a negligible role in the attainment of steady-state plasma levels.

Absorption

Naproxen delayed-release tablets

Naproxen delayed-release tablets are designed with a pH-sensitive coating to provide a barrier to disintegration in the acidic environment of the stomach and to lose integrity in the more neutral environment of the small intestine. The enteric polymer coating selected for Naproxen delayed-release tablets dissolves above pH 6. When Naproxen delayed-release tablets were given to fasted subjects, peak plasma levels were attained about 4 to 6 hours following the first dose (range: 2 to 12 hours). An in vivo study in man using radiolabeled Naproxen delayed-release tablets demonstrated that Naproxen delayed-release tablets dissolves primarily in the small intestine rather than in the stomach, so the absorption of the drug is delayed until the stomach is emptied.

When Naproxen delayed-release tablets and Naproxen tablets were given to fasted subjects (n=24) in a crossover study following 1 week of dosing, differences in time to peak plasma levels (T_{max}) were observed, but there were no differences in total absorption as measured by C_{max} and AUC.

	Naproxen Delayed-release Tablets * 500 mg bid	Naproxen Tablets * 500 mg bid
C _{max} (µg/mL)	84.9 (18%)	97.4 (19%)
T _{max} (hours)	4 (20%)	1.9 (6%)
AUC ₀₋₂₄ (µg h/mL)	845 (20%)	787 (15%)

*Mean value (coefficient of variation)

Analgesic Effects

When Naproxen delayed-release tablets were given as a single dose with analgesic (54 mg/kg buffering capacity), the peak plasma levels of naproxen were unchanged, but the time to peak was reduced (mean T_{max} fasted 5.6 hours, mean T_{max} with analgesic 5 hours), although not significantly (see PRECAUTIONS; Drug Interactions).

Food Effects

When Naproxen delayed-release tablets were given as a single dose with food, peak plasma levels in most subjects were achieved in about 12 hours (range: 4 to 24 hours). Residence time in the small intestine until disintegration was independent of food intake. The presence of food prolonged the time the tablets remained in the stomach, time to first detectable serum naproxen levels, and time to maximal naproxen levels (C_{max}), but did not affect peak naproxen levels (C_{max}).

Distribution

Naproxen has a volume of distribution of 0.16 L/kg. At therapeutic levels, naproxen is greater than 99% albumin-bound. As doses of naproxen greater than 500 mg/day there is first than proportional increase in plasma levels due to an increase in clearance caused by saturation of plasma protein binding at higher doses (average trough C₁₂, 36.5, 49.2 and 36.4 µg/L with 500, 1000 and 1500 mg daily doses of naproxen, respectively). The approximate site has been found in the risk of lactating women a concentration equivalent to approximately 1% of maximum naproxen concentration in plasma (see PRECAUTIONS; Nursing Mothers).

Elimination

Metabolism

Naproxen is extensively metabolized in the liver to 6-*o*-desmethyl naproxen, and both parent and metabolites do not induce metabolizing enzymes. Both naproxen and 6-*o*-desmethyl naproxen are further metabolized to their respective acylglucuronide conjugated metabolites.

Excretion

The clearance of naproxen is 0.13 mL/min/kg. Approximately 95% of the naproxen from any dose is excreted in the urine, primarily as naproxen (<1%), 6-*o*-desmethyl naproxen (<1%) or their conjugates (66% to 92%). The plasma half-life of the naproxen in human ranges from 12 to 17 hours. The corresponding half-lives of both naproxen metabolites and conjugates are shorter than 12 hours, and their rates of excretion have been found to coincide closely with the rate of naproxen disappearance from the plasma. Small amounts, 2% or less of the administered dose, are excreted in the feces. In patients with renal failure metabolites may accumulate (see WARNINGS; Renal Toxicity and Hypertension).

Special Populations

Pediatric Patients

In pediatric patients aged 5 to 16 years with arthritis, plasma naproxen levels following a 5 mg/kg single dose of naproxen suspension (see DOSAGE AND ADMINISTRATION) were found to be similar to those found in normal adults following a 500 mg dose. The terminal half-life appears to be similar in pediatric and adult patients. Pharmacokinetic studies of naproxen were not performed in pediatric patients younger than 5 years of age. Pharmacokinetic parameters appear to be similar following administration of naproxen suspension or tablets in pediatric patients. Naproxen delayed-release tablets have not been studied in subjects under the age of 18.

Geriatric Patients

Studies indicate that although total plasma concentration of naproxen is unchanged, the unbound plasma fraction of naproxen is increased in the elderly, although the unbound fraction of 1% of the total naproxen concentration. Unbound total naproxen concentrations in elderly subjects have been reported to range from 0.12% to 0.18% of total naproxen concentration, compared with 0.05% to 0.07% in younger subjects. The clinical significance of this finding is unclear, although it is possible that the increase in free naproxen concentration could be associated with an increase in the rate of adverse events per a given dosage in some elderly patients.

Race

Pharmacokinetic differences due to race have not been studied.

Hepatic Impairment

Naproxen pharmacokinetics has not been determined in subjects with hepatic insufficiency.

Chronic alcoholic liver disease and probably other diseases with decreased or abnormal plasma protein (albumin) reduce the total plasma concentration of naproxen, but the plasma concentration of unbound naproxen is increased. Caution is advised when high doses are required and some adjustment of dosage may be required in these patients. It is prudent to use the lowest effective dose.

Renal Impairment

Naproxen pharmacokinetics has not been determined in subjects with renal insufficiency. Given that naproxen, its metabolites and conjugates are primarily excreted by the kidney, the potential exists for naproxen metabolites to accumulate in the presence of renal insufficiency. Elimination of naproxen is decreased in patients with severe renal impairment. Naproxen-containing products are not recommended for use in patients with moderate to severe and severe renal impairment (creatinine clearance <30 mL/min) (see WARNINGS; Renal Toxicity and Hypertension).

Drug Interaction Studies

Aspirin: When NSAIDs were administered with aspirin, the protein binding of NSAIDs were reduced, although the clearance of free NSAID was not altered. The clinical significance of this interaction is not known. See Table 1 for clinically significant drug interactions of NSAIDs with aspirin (see PRECAUTIONS; Drug Interactions).

CLINICAL STUDIES

General Information

Naproxen has been studied in patients with rheumatoid arthritis, osteoarthritis, juvenile arthritis, ankylosing spondylitis, tendinitis and bursitis, and acute gout. Improvement in patients treated for rheumatoid arthritis was demonstrated by a reduction in their swelling, a reduction in duration of morning stiffness, a reduction in disease activity as assessed by both the investigator and patient, and by increased mobility as demonstrated by a reduction in walking time. Generally, response to naproxen has not been found to be dependent on age, sex, severity or duration of rheumatoid arthritis. In patients with osteoarthritis, the therapeutic action of naproxen has been shown by a reduction in joint pain or tenderness, an increase in range of motion in knee joints, increased mobility as demonstrated by a reduction in walking time, and improvement in capacity to perform activities of daily living impaired by the disease.

In a clinical trial comparing standard formulations of naproxen 375 mg twice a day (750 mg a day) vs 750 mg twice a day (1500 mg/day), 9 patients in the 750 mg group terminated prematurely because of adverse events. Nineteen patients in the 1500 mg group terminated prematurely because of adverse events. Most of these adverse events were gastrointestinal events.

In clinical studies in patients with rheumatoid arthritis, osteoarthritis, and juvenile arthritis, naproxen has been shown to be comparable to aspirin and indomethacin in controlling the aforementioned measures of disease activity, but the frequency and severity of the milder gastrointestinal adverse effects (nausea, dyspepsia, heartburn) and/or nervous system adverse effects (dizziness, headache) were higher in patients with juvenile arthritis than in those treated with aspirin or indomethacin.

In patients with ankylosing spondylitis, naproxen has been shown to decrease night pain, morning stiffness and pain at rest. In double-blind studies the drug was shown to be as effective as aspirin, but with fewer side effects.

In patients with acute gout, a favorable response to naproxen was shown by significant clearing of inflammatory changes (e.g., decrease in swelling, heat) within 24 to 48 hours, as well as by relief of pain and tenderness.

Naproxen has been studied in patients with mild to moderate pain secondary to postoperative, orthopedic, postpartum epistomy and uterine contraction pain and dysmenorrhea. Onset of pain relief can begin within 1 hour in patients taking naproxen and within 30 minutes in patients taking naproxen sodium. Analgesic effect was shown by such measures as reduction of pain intensity scores, increase in pain relief scores, decrease in numbers of patients requiring additional analgesic medication, and delay in time to remedication. The analgesic effect has been found to last for up to 12 hours.

Naproxen may be used safely in combination with gold salts and/or corticosteroids; however, in controlled clinical trials, when added to the regimen of patients receiving corticosteroids, it did not appear to cause greater improvement over that seen with corticosteroids alone. Whether naproxen has a "steroid-sparing" effect has not been adequately studied. When added to the regimen of patients receiving gold salts, naproxen did result in greater improvement. Its use in combination with salicylates is not recommended because there is evidence that aspirin increases the rate of excretion of naproxen and data are inadequate to demonstrate that naproxen and aspirin produce greater improvement over that achieved with aspirin alone. In addition, as with other NSAIDs, the combination may result in higher frequency of adverse events than demonstrated for either product alone.

In ¹⁴C blood loss and gastroscopy studies with normal volunteers, daily administration of 1000 mg of naproxen has been demonstrated to cause statistically significantly less gastric bleeding and erosion than 3250 mg of aspirin.

Three 6-week, double-blind, multicenter studies with Naproxen delayed-release tablets (375 mg or 500 mg twice a day, n=385) and Naproxen immediate-release tablets (375 mg or 500 mg twice a day, n=279) were conducted comparing Naproxen delayed-release tablets with Naproxen immediate-release tablets, including 355 rheumatoid arthritis and osteoarthritis patients who had a recent history of NSAID-related GI symptoms. These studies indicated that Naproxen delayed-release tablets and Naproxen immediate-release tablets showed no significant differences in efficacy or safety and had similar prevalence of minor GI complaints. Individual patients, however, may find one formulation preferable to the other.

Five hundred and fifty-three patients received Naproxen delayed-release tablets during long-term open-label trials (mean length of treatment was 159 days). The rates for clinically-diagnosed peptic ulcers and GI bleeds were similar to what has been historically reported for long-term NSAID use.

Geriatric Patients

The hepatic and renal tolerability of long-term naproxen administration was studied in two double-blind clinical trials involving 586 patients. Of the patients studied, 98 patients were age 65 and older and 10 of the 98 patients were age 75 and older. Naproxen was administered at doses of 375 mg twice daily or 750 mg twice daily for up to 6 months. Transient abnormalities of laboratory tests assessing hepatic and renal function were noted in some patients, although there were no differences noted in the occurrence of abnormal values among different age groups.

INDICATIONS AND USAGE

Carefully consider the potential benefits and risks of naproxen delayed-release tablets and other treatment options before deciding to use naproxen delayed-release tablets. Use the lowest effective dosage for the shortest duration consistent with individual patient treatment goals (see **WARNINGS: Gastrointestinal Bleeding, Ulceration, and Perforation**).

Naproxen delayed-release tablets are indicated:

- For the relief of the signs and symptoms of rheumatoid arthritis
- For the relief of the signs and symptoms of osteoarthritis
- For the relief of the signs and symptoms of ankylosing spondylitis
- For the relief of the signs and symptoms of juvenile arthritis

Naproxen delayed-release tablets are not recommended for initial treatment of acute pain because the absorption of naproxen is delayed compared to absorption from other naproxen-containing products (see **CLINICAL PHARMACOLOGY, DOSAGE AND ADMINISTRATION**).

CONTRAINDICATIONS

Naproxen delayed-release tablets are contraindicated in the following patients:

- Known hypersensitivity (e.g., anaphylactic reactions and serious skin reactions) to naproxen or any components of the drug product (see **WARNINGS: Anaphylactic Reaction, Serious Skin Reactions**),
- History of asthma, urticaria, or other allergic-type reaction after taking aspirin or other NSAIDs. Severe, sometimes fatal, anaphylactic reactions to NSAIDs have been reported in such patients (see **WARNINGS: Anaphylactic Reaction, Exacerbation of Asthma Related to Aspirin Sensitivity**).
- In the setting of coronary artery bypass graft (CABG) surgery (see **WARNINGS: Cardiovascular Thrombotic Events**).

WARNINGS

Cardiovascular Thrombotic Events

Clinical trials of several COX-2 selective and nonselective NSAIDs of up to three years duration have shown an increased risk of serious cardiovascular (CV) thrombotic events, including myocardial infarction (MI) and stroke, which can be fatal. Based on available data, it is unclear that the risk for CV thrombotic events is similar for all NSAIDs. The relative increase in serious CV thrombotic events over baseline conferred by NSAID use appears to be similar in those with and without known CV disease or risk factors for CV disease. However, patients with known CV disease or risk factors had a higher absolute incidence of excess serious CV thrombotic events, due to their increased baseline rate. Some observational studies found that this increased risk of serious CV thrombotic events began as early as the first weeks of treatment. The increase in CV thrombotic risk has been observed most consistently at higher doses.

To minimize the potential risk for an adverse CV event in NSAID-treated patients, use the lowest effective dose for the shortest duration possible. Physicians and patients should remain alert for the development of such events, throughout the entire treatment course, even in the absence of previous CV symptoms. Patients should be informed about the symptoms of serious CV events and the steps to take if they occur.

There is no consistent evidence that concurrent use of aspirin mitigates the increased risk of serious CV thrombotic events associated with NSAID use. The concurrent use of aspirin and NSAID, such as naproxen, increases the risk of serious gastrointestinal (GI) events (see **WARNINGS: Gastrointestinal Bleeding, Ulceration, and Perforation**).

Stent, Post-Coronary Artery Bypass Graft (CABG) Surgery

Two large, controlled, clinical trials of a COX-2 selective NSAID for the treatment of pain in the first 10 to 14 days following CABG surgery found an increased incidence of myocardial infarction and stroke. NSAIDs are contraindicated in the setting of CABG (see **CONTRAINDICATIONS**).

Post-MI Patients

Observational studies conducted in the Danish National Registry have demonstrated that patients treated with NSAIDs in the post-MI period were at increased risk of reinfarction, CV-related death, and all-cause mortality beginning in the first week of treatment. In this same cohort, the incidence of death in the first year post-MI was 20 per 100 persons years in NSAID-treated patients compared 12 per 100 persons years in non-NSAID exposed patients. Although the absolute rate of death declined somewhat after the first year post-MI, the increased relative risk of death in NSAID users persisted over at least the next four years of follow-up.

Avoid the use of naproxen delayed-release tablets in patients with a recent MI unless the benefits are expected to outweigh the risk of recurrent CV thrombotic events. If naproxen delayed-release tablets are used in patients with a recent MI, monitor patients for signs of cardiac ischemia.

Gastrointestinal Bleeding, Ulceration, and Perforation

NSAIDs, including naproxen cause serious gastrointestinal (GI) adverse events including inflammation, bleeding, ulceration, and perforation of the esophagus, stomach, small intestine, or large intestine, which can be fatal. These serious adverse events can occur at any time, with or without warning symptoms, in patients treated with NSAIDs. Only one in five patients who develop a serious upper GI adverse event on NSAID therapy, is symptomatic. Upper GI ulcers, gross bleeding, or perforation caused by NSAIDs occurred in approximately 1% of patients treated for 3 to 6 months, and about 2% to 4% of patients treated for one year. However, even short-term NSAID therapy is not without risk.

Risk Factors for GI Bleeding, Ulceration, and Perforation

Patients with a prior history of peptic ulcer disease and/or GI bleeding who used NSAIDs had a greater than 10-fold increased risk for developing a GI bleed compared to patients without these risk factors. Other factors that increase the risk of GI bleeding in patients treated with NSAIDs include longer duration of NSAID therapy; concomitant use of oral corticosteroids, aspirin, anticoagulants, or selective serotonin reuptake inhibitors (SSRIs); smoking; use of alcohol; older age; and poor general health status. Most postmarketing reports of fatal GI events occurred in elderly or debilitated patients. Additionally, patients with advanced liver disease and/or coagulopathy are at increased risk for GI bleeding.

Strategies to Minimize the GI Risks in NSAID-treated patients:

- Use the lowest effective dosage for the shortest possible duration.
- Avoid administration of more than one NSAID at a time.
- Avoid use in patients at higher risk unless benefits are expected to outweigh the increased risk of bleeding. For such patients, as well as those with active GI bleeding, consider alternate therapies other than NSAIDs.
- Remain alert for signs and symptoms of GI ulceration and bleeding during NSAID therapy.
- If a serious GI adverse event is suspected, promptly initiate evaluation and treatment, and discontinue naproxen delayed-release tablets until a serious GI adverse event is ruled out.
- In the setting of concomitant use of low-dose aspirin for cardiac prophylaxis, monitor patients more closely for evidence of GI bleeding (see **PRECAUTIONS: Drug Interactions**).

Hepatotoxicity

Elevation of ALT or AST (three or more times the upper limit of normal [ULN]) have been reported in approximately 1% of patients in clinical trials. In addition, rare, sometimes fatal, cases of severe hepatic injury, including fulminant hepatitis, liver necrosis and hepatic failure have been reported.

Elevation of ALT or AST (less than three times ULN) may occur in up to 15% of patients taking NSAIDs including naproxen.

Inform patients of the warning signs and symptoms of hepatotoxicity (e.g., nausea, fatigue, lethargy, diarrhea, pruritus, jaundice, right upper quadrant tenderness, and "flu-like" symptoms). If clinical signs and symptoms consistent with liver disease develop, or if systemic manifestations occur (e.g., eosinophilia, rash, etc.), discontinue naproxen delayed-release tablets immediately, and perform a clinical evaluation of the patient.

Hypertension

NSAIDs, including naproxen delayed-release tablets can lead to onset of new hypertension or worsening of preexisting hypertension, either of which may contribute to the increased incidence of CV events. Patients taking angiotensin converting enzyme (ACE) inhibitors, diuretic diuretics, or loop diuretics may have impaired response to these therapies when taking NSAIDs (see **PRECAUTIONS: Drug Interactions**).

Monitor blood pressure (BP) during the initiation of NSAID treatment and throughout the course of therapy.

Heart Failure and Edema

The Coxib and Traditional NSAID Trialists' Collaboration meta-analysis of randomized controlled trials demonstrated an approximately two-fold increase in hospitalization for heart failure in COX-2 selective-treated patients and nonselective NSAID-treated patients compared to placebo-treated patients. In a Danish National Registry study of patients with heart failure, NSAID use increased the risk of MI, hospitalization for heart failure, and death.

Additionally, fluid retention and edema have been observed in some patients treated with NSAIDs. Use of naproxen may blunt the CV effects of several therapeutic agents used to treat these medical conditions (e.g., diuretics, ACE inhibitors, or angiotensin receptor blockers [ARBs]) (see **PRECAUTIONS: Drug Interactions**).

Avoid the use of naproxen delayed-release tablets in patients with severe heart failure unless the benefits are expected to outweigh the risk of worsening heart failure. If naproxen delayed-release tablets are used in patients with severe heart failure, monitor patients for signs of worsening heart failure.

Renal Toxicity and Hyperkalemia

Renal Toxicity

Long-term administration of NSAIDs has resulted in renal papillary necrosis and other renal injury. Renal toxicity has also been seen in patients in whom renal prostaglandins have a compensatory role in the maintenance of renal perfusion. In these patients, administration of an NSAID may cause a dose-dependent reduction in prostaglandin formation and, secondarily, in renal blood flow, which may precipitate overt renal decompensation. Patients at greatest risk of this reaction are those with impaired renal function, dehydration, hypovolemia, heart failure, liver dysfunction, those taking diuretics and ACE inhibitors or ARBs, and the elderly. Discontinuation of NSAID therapy is usually followed by recovery to the pretreatment state.

No information is available from controlled clinical studies regarding the use of naproxen delayed-release tablets in patients with advanced renal disease. The renal effects of naproxen delayed-release tablets may lessen the progression of renal dysfunction in patients with preexisting renal disease. Correct volume status in dehydrated or hypovolemic patients prior to initiating naproxen delayed-release tablets. Monitor renal function in patients with renal or hepatic impairment, heart failure, dehydration, or hypovolemia during use of naproxen delayed-release tablets (see **PRECAUTIONS: Drug Interactions**). Avoid the use of naproxen delayed-release tablets in patients with advanced renal disease unless the benefits are expected to outweigh the risk of worsening renal function. If naproxen delayed-release tablets are used in patients with advanced renal disease, monitor patients for signs of worsening renal function.

Hyperkalemia

Increases in serum potassium concentration, including hyperkalemia, have been reported with use of NSAIDs, even in some patients without renal impairment. In patients with normal renal function, these effects have been attributed to a hyporeninemic-hypoaldosteronism state.

Anaphylactic Reactions

Naproxen has been associated with anaphylactic reactions in patients with and without known hypersensitivity to naproxen and in patients with aspirin-sensitive asthma (see **CONTRAINDICATIONS, WARNINGS: Exacerbation of Asthma Related to Aspirin Sensitivity**).

Exacerbation of Asthma Related to Aspirin Sensitivity

A subgroup of patients with asthma may have aspirin-sensitive asthma which may include chronic rhinosinusitis complicated by nasal polyps; severe, potentially fatal bronchospasm; and/or intolerance to aspirin and other NSAIDs. Because cross-reactivity between aspirin and other NSAIDs has been reported in such aspirin-sensitive patients, naproxen delayed-release tablets are contraindicated in patients with this form of aspirin sensitivity (see **CONTRAINDICATIONS**). When naproxen delayed-release tablets are used in patients with preexisting asthma (without known aspirin sensitivity), monitor

patients for changes in the signs and symptoms of asthma.

Serious Skin Reactions

NSAIDs, including naproxen, can cause serious skin adverse reactions such as exfoliative dermatitis, Stevens-Johnson Syndrome (SJS), and toxic epidermal necrolysis (TEN), which can be fatal. These serious events may occur without warning. Inform patients about the signs and symptoms of serious skin reactions and to discontinue the use of naproxen delayed-release tablets at the first appearance of skin rash or any other sign of hypersensitivity. Naproxen delayed-release tablets are contraindicated in patients with previous serious skin reactions to NSAIDs (see CONTRAINDICATIONS).

Premature Closure of Fetal Ducts Arteriosus

Naproxen may cause premature closure of the fetal ducts arteriosus. Avoid use of NSAIDs, including naproxen delayed-release tablets, in pregnant women starting at 30 weeks of gestation (third trimester) (see PRECAUTIONS; Pregnancy).

Hematoxic Toxicity

Anemia has occurred in NSAID-treated patients. This may be due to occult or gross blood loss, fluid retention, or an incompletely described effect on erythropoiesis. If a patient treated with naproxen delayed-release tablets has any signs or symptoms of anemia, monitor hemoglobin or hematocrit. NSAIDs, including naproxen delayed-release tablets, may increase the risk of bleeding events. Co-morbid conditions such as coagulation disorders, or concurrent use of warfarin and other anti-coagulants, antiplatelet agents (e.g., aspirin, serotonin reuptake inhibitors (SRIIs) and serotonin norepinephrine reuptake inhibitors (SNRIs)) may increase this risk. Monitor these patients for signs of bleeding (see PRECAUTIONS; Drug Interactions).

PRECAUTIONS

General

Naproxen delayed-release tablets should not be used concomitantly with other naproxen products (naproxen sodium) since they all circulate in the plasma as the naproxen anion.

Naproxen delayed-release tablets cannot be expected to substitute for corticosteroids or to treat corticosteroid insufficiency. Abrupt discontinuation of corticosteroids may lead to disease exacerbation. Patients on prolonged corticosteroid therapy should have their therapy tapered slowly if a decision is made to discontinue corticosteroids and the patient should be observed closely for any evidence of adverse effects, including adrenal insufficiency and exacerbation of symptoms of arthritis. Patients with initial hemoglobin values of 10 g or less who are to receive long-term therapy should have hemoglobin values determined periodically.

Because of adverse eye findings in animal studies with drugs of this class, it is recommended that ophthalmic studies be carried out if any change or disturbance in vision occurs.

Information for Patients

Advise the patient to read the FDA-approved patient labeling (Medication Guide) that accompanies each prescription dispensed. Inform patients, families, or their caregivers of the following information before initiating therapy with naproxen delayed-release tablets and periodically during the course of ongoing therapy.

Cardiovascular Thrombotic Events

Advise patients to be alert for the symptoms of cardiovascular thrombotic events, including chest pain, abdomen pain, weakness, or slurring of speech, and to report any of these symptoms to their health care provider immediately (see WARNINGS; Cardiovascular Thrombotic Events).

Gastrointestinal Bleeding, Ulceration, and Perforation

Advise patients to report symptoms of ulcerations and bleeding, including epigastric pain, dyspepsia, melena, and hematemesis to their health care provider. In the setting of concurrent use of low-dose aspirin for cardiac prophylaxis, inform patients of the increased risk for the signs and symptoms of GI bleeding (see WARNINGS; Gastrointestinal Bleeding, Ulceration, and Perforation).

Hepatoxicity

Inform patients of the warning signs and symptoms of hepatotoxicity (e.g., nausea, fatigue, lethargy, pruritus, jaundice, right upper quadrant tenderness, and "flu-like" symptoms). If these occur, instruct patients to stop naproxen delayed-release tablets and seek immediate medical therapy (see WARNINGS; Hepatoxicity).

Heart Failure and Edema

Advise patients to be alert for the symptoms of congestive heart failure including shortness of breath, unexplained weight gain, or edema and to contact their healthcare provider if such symptoms occur (see WARNINGS; Heart Failure and Edema).

Anaphylactic Reaction

Inform patients of the signs of an anaphylactic reaction (e.g., difficulty breathing, swelling of the face or throat). Instruct patients to seek immediate emergency help if these occur (see CONTRAINDICATION; WARNINGS; Anaphylactic Reactions).

Serious Skin Reactions

Advise patients to stop naproxen delayed-release tablets immediately if they develop any type of rash and to contact their healthcare provider as soon as possible (see WARNINGS; Serious Skin Reactions).

Female Fertility

Advise females of reproductive potential who desire pregnancy that NSAIDs, including VOLTAREN, may be associated with a reversible delay in ovulation (see PRECAUTIONS; Carcinogenicity, Mutagenesis, Impairment of Fertility).

Fetal Toxicity

Inform pregnant women to avoid use of naproxen delayed-release tablets and other NSAIDs starting at 30 weeks gestation because of the risk of the premature closing of the fetal ducts arteriosus (see WARNINGS; Premature Closure of Fetal Ducts Arteriosus).

Avoid Concomitant Use of NSAIDs

Inform patients that the concomitant use of naproxen delayed-release tablets with other NSAIDs or salicylates (e.g., diflunisal, salsalate) is not recommended due to the increased risk of gastrointestinal toxicity, and little or no increase in efficacy (see WARNINGS; Gastrointestinal Bleeding, Ulceration, and Perforation; PRECAUTIONS; Drug Interactions). Alert patients that NSAIDs may be present in "over the counter" medications for treatment of colds, fever, or aches.

Use of NSAIDs and Low-Dose Aspirin

Inform patients not to use low-dose aspirin concomitantly with naproxen delayed-release tablets until they talk to their healthcare provider (see PRECAUTIONS; Drug Interactions).

Activities Requiring Alertness

Caution should be exercised by patients whose activities require alertness if they experience dizziness, dizziness, vertigo or depression during therapy with naproxen.

Masking of Inflammation and Fever

The pharmacological activity of naproxen delayed-release tablets in reducing inflammation, and possibly fever, may diminish the utility of diagnostic signs in detecting infection.

Laboratory Monitoring

Because serious GI bleeding, hepatotoxicity, and renal injury can occur without warning symptoms or signs, consider monitoring patients on long-term NSAID treatment with a CBC and a chemistry profile periodically (see WARNINGS; Gastrointestinal Bleeding, Ulceration and Perforation, and Hepatoxicity).

Drug Interactions

See Table 1 for clinically significant drug interactions with naproxen.

Table 1: Clinically Significant Drug Interactions with naproxen

Drugs That Interfere with Hemostasis	
Clinical Impact:	NSAID-related. Naproxen and anti-coagulants such as warfarin have a synergistic effect on bleeding. The concurrent use of naproxen and anti-coagulants has an increased risk of serious bleeding compared to the use of either drug alone. Beronitis release by platelets plays an important role in hemostasis. Case-control and cohort epidemiological studies showed that concurrent use of drugs that interfere with serotonin reuptake and an NSAID may potentiate the risk of bleeding more than an NSAID alone.
Intervention:	NSAID-related. Monitor patients with concurrent use of naproxen delayed-release tablets with anti-coagulants (e.g., warfarin), antiplatelet agents (e.g., aspirin), selective serotonin reuptake inhibitors (SSRIs), and serotonin norepinephrine reuptake inhibitors (SNRIs) for signs of bleeding (see WARNINGS; Hematologic Toxicity). See also NSAID-related.
Aspirin	
Clinical Impact:	Controlled clinical studies showed that the concurrent use of NSAIDs and analgesic doses of aspirin does not produce any greater therapeutic effect than the use of NSAIDs alone. In a clinical study, the concurrent use of an NSAID and aspirin was associated with a significantly increased incidence of GI adverse reaction as compared to use of the NSAID alone (see WARNINGS; Gastrointestinal Bleeding, Ulceration and Perforation).
Intervention:	Concomitant use of naproxen delayed-release tablets and analgesic doses of aspirin is not generally recommended because of the increased risk of bleeding (see WARNINGS; Hematologic Toxicity). Naproxen delayed-release tablets are not a substitute for low-dose aspirin for cardiovascular protection.
ACE Inhibitors, Angiotensin Receptor Blockers, and Beta-Blockers	
Clinical Impact:	NSAID-related. NSAIDs may diminish the antihypertensive effect of angiotensin converting enzyme (ACE) inhibitors, angiotensin receptor blockers (ARBs), or beta-blockers (including propranolol). In patients who are elderly, volume-depleted (including those on diuretic therapy), or have renal impairment, co-administration of NSAID with ACE inhibitors or ARBs may result in deterioration of renal function, including possible acute renal failure. These effects are usually reversible.
Intervention:	NSAID-related. During concurrent use of naproxen delayed-release tablets and ACE-inhibitors, ARBs, or beta-blockers, monitor blood pressure to ensure that the desired blood pressure is obtained. During concurrent use of naproxen delayed-release tablets and ACE-inhibitors or ARBs in patients who are elderly, volume-depleted or have impaired renal function, monitor for signs of acute renal failure (see WARNINGS; Renal Toxicity and Impaired Renal Function). If renal function is affected, discontinue concurrent use of NSAID and ACE-inhibitor or ARB.
Diuretics	
Clinical Impact:	Clinical studies, as well as post-marketing observations, showed that NSAIDs reduced the natriuretic effect of loop diuretics (e.g., furosemide) and thiazide diuretics in some patients. This effect has been attributed to the NSAID inhibition of renal prostaglandin synthesis.
Intervention:	During concurrent use of naproxen delayed-release tablets with diuretics, observe patients for signs of worsening renal function, in addition to assuring diuretic efficacy including antihypertensive effects (see WARNINGS; Renal Toxicity and Hypertension).
Digoxin	
Clinical Impact:	The concurrent use of naproxen with digoxin has been reported to increase the serum concentration and prolong the half-life of digoxin.
Intervention:	During concurrent use of naproxen delayed-release tablets and digoxin, monitor serum digoxin levels.
Lithium	
Clinical Impact:	NSAIDs have produced elevation in plasma lithium levels and reductions in renal lithium clearance. The mean minimum lithium concentration increased 15%, and the renal clearance decreased by approximately 20%. This effect has been attributed to NSAID inhibition of renal prostaglandin synthesis.
Intervention:	During concurrent use of naproxen delayed-release tablets and lithium, monitor patients for signs of lithium toxicity.
Methotrexate	
Clinical Impact:	Concomitant use of NSAIDs and methotrexate may increase the risk for methotrexate toxicity (e.g., neutropenia, thrombocytopenia, renal dysfunction).
Intervention:	During concurrent use of naproxen delayed-release tablets and methotrexate, monitor patients for methotrexate toxicity.
Cyclosporine	
Clinical Impact:	Concomitant use of naproxen delayed-release tablets and cyclosporine may increase cyclosporine's nephrotoxicity.
Intervention:	During concurrent use of naproxen delayed-release tablets and cyclosporine, monitor patients for signs of worsening renal function.
NSAIDs and Salicylates	
Clinical Impact:	Concomitant use of naproxen with other NSAIDs or salicylates (e.g., diflunisal, salsalate) increases the risk of GI toxicity, with little or no increase in efficacy (see WARNINGS; Gastrointestinal Bleeding, Ulceration and Perforation).
Intervention:	The concomitant use of naproxen with other NSAIDs or salicylates is not recommended.
Penicillins	
Clinical Impact:	Concomitant use of naproxen delayed-release tablets and penicillins may increase the risk of penicillin-associated myelosuppression, renal, and GI toxicity (see the penicillin prescribing information).
Intervention:	During concurrent use of naproxen delayed-release tablets and penicillins, in patients with renal impairment whose creatinine clearance ranges from 45 to 79 mL/min, monitor for myelosuppression, renal and GI toxicity.
NSAIDs with Short-Acting Potassium-Sparing Diuretics	
Clinical Impact:	NSAIDs with short-acting potassium-sparing diuretics (e.g., diltiazem, fludrocortisone) should be avoided for a period of two days before, the day of, and two days following administration of penicillins.
Intervention:	In the absence of data regarding potential interaction between penicillins and NSAIDs with longer half-lives (e.g., diltiazem, nifedipine), patients taking these NSAIDs should interrupt dosing for at least five days before, the day of, and two days following penicillin administration.
Antacids and Sucralfate	
Clinical Impact:	Concomitant administration of some antacids (magnesium oxide or aluminum hydroxide) and sucralfate can delay the absorption of naproxen.
Intervention:	Concomitant administration of antacids such as magnesium oxide or aluminum hydroxide, and sucralfate with naproxen delayed-release tablets are not recommended.
Cholestyramine	
Clinical Impact:	Due to the gastric pH elevating effects of H2-blockers, sucralfate and intensive antacid therapy, concomitant administration of naproxen delayed-release tablets are not recommended.
Intervention:	Concomitant administration of cholestyramine can delay the absorption of naproxen.
Probenecid	
Clinical Impact:	Concomitant administration of cholestyramine with naproxen delayed-release tablets are not recommended.
Probenecid	
Clinical Impact:	Probenecid given concurrently increases naproxen anion plasma levels and extends its plasma half-life significantly.
Intervention:	Patients simultaneously receiving naproxen delayed-release tablets and probenecid should be observed for adjustment of dose if required.
Other albumin-bound drugs	
Clinical Impact:	Naproxen is highly bound to plasma albumin. It thus has a theoretical potential for interaction with other albumin-bound drugs such as coumatin-type anticoagulants, sulphonylureas, hydantoin, other NSAIDs, and aspirin.
Intervention:	Patients simultaneously receiving naproxen delayed-release tablets and a hydantoin, sulphonylurea or sulphonylurea should be observed for adjustment of dose if required.
Drug-Laboratory Test Interactions	
Bleeding times	
Clinical Impact:	Naproxen may decrease platelet aggregation and prolong bleeding time.
Intervention:	This effect should be kept in mind when bleeding times are determined.
Porter-Silber test	
Clinical Impact:	The administration of naproxen may result in increased urinary values for 17-ketogenic steroids because of an interaction between the drug and/or its metabolites with tri-terebenzene used in this assay.
Intervention:	Although 17-hydroxy-corticosteroid measurements (Porter-Silber test) do not appear to be artifactually altered, it is suggested that therapy with naproxen be temporarily discontinued 72 hours before adrenal function tests are performed if the Porter-Silber test is to be used.
Urinary assays of 5-hydroxy indoleacetic acid (SHAA)	
Clinical Impact:	Naproxen may interfere with some urinary assays of 5-hydroxy indoleacetic acid (SHAA).
Intervention:	This effect should be kept in mind when urinary 5-hydroxy indoleacetic acid is determined.

Drug-Laboratory Test Interactions	
Bleeding times	
Clinical Impact:	Naproxen may decrease platelet aggregation and prolong bleeding time.
Intervention:	This effect should be kept in mind when bleeding times are determined.
Porter-Silber test	
Clinical Impact:	The administration of naproxen may result in increased urinary values for 17-ketogenic steroids because of an interaction between the drug and/or its metabolites with tri-terebenzene used in this assay.
Intervention:	Although 17-hydroxy-corticosteroid measurements (Porter-Silber test) do not appear to be artifactually altered, it is suggested that therapy with naproxen be temporarily discontinued 72 hours before adrenal function tests are performed if the Porter-Silber test is to be used.
Urinary assays of 5-hydroxy indoleacetic acid (SHAA)	
Clinical Impact:	Naproxen may interfere with some urinary assays of 5-hydroxy indoleacetic acid (SHAA).
Intervention:	This effect should be kept in mind when urinary 5-hydroxy indoleacetic acid is determined.

Carcinogens, Mutagens, Impairment of Fertility

Carcinogens

A 2-year study was performed in rats to evaluate the carcinogenic potential of naproxen at rat doses of 8, 16, and 24 mg/kg/day (0.05, 0.1, and 0.16 times the maximum recommended human daily dose [MRHD] of 1200 mg/day based on a body surface area comparison). No evidence of tumorigenicity was found.

Mutagens

Studies to evaluate the mutagenic potential of naproxen delayed-release tablets have not been completed.

Impairment of Fertility

Male rats were treated with 2, 5, 10, and 20 mg/kg naproxen by oral gavage for 60 days prior to mating and female rats were treated with the same doses for 14 days prior to mating and for the first 7 days of pregnancy. There were no adverse effects on fertility noted (up to 0.13 times the MRHD based on body surface area).

Pregnancy

Risk Summary

Use of NSAIDs, including naproxen delayed-release tablets, during the third trimester of pregnancy increases the risk of premature closure of the fetal ductus arteriosus. Avoid use of NSAIDs, including naproxen tablets, in pregnant women starting at 30 weeks of gestation (third trimester) (see WARNINGS; Premature Closure of Fetal Ductus Arteriosus).

There are no adequate and well-controlled studies of naproxen delayed-release tablets in pregnant women.

Data from observational studies regarding potential embryo/fetal risks of NSAID use in women in the first or second trimesters of pregnancy are inconclusive. In the general U.S. population, all clinically recognized pregnancies, regardless of drug exposure, have a background rate of 2% to 4% for major malformations, and 15% to 20% for pregnancy loss. In animal reproduction studies in rats, rabbits, and mice, there is no evidence of teratogenicity or fetal harm when naproxen was administered during the period of organogenesis at doses 0.13, 0.26, and 0.6 times the maximum recommended human daily dose of 1200 mg/day, respectively. Based on animal data, prostaglandins have been shown to have an important role in endothelial vascular permeability, placental implantation, and decidualization. In animal studies, administration of prostaglandin synthesis inhibitors such as naproxen, resulted in increased pre- and post-implantation loss.

Data

Human Data

There is some evidence to suggest that when inhibitors of prostaglandin synthesis are used to delay preterm labor there is an increased risk of neonatal complications such as necrotizing enterocolitis, patent ductus arteriosus and intracranial hemorrhage. Naproxen treatment given in late pregnancy to delay parturition has been associated with persistent pulmonary hypertension, renal dysfunction and abnormal prostaglandin E levels in preterm infants. In the case of the known effects of nonsteroidal anti-inflammatory drugs on the fetal cardiovascular system (closure of ductus arteriosus), use during pregnancy (particularly starting at 30 weeks of gestation, or third trimester) should be avoided.

Animal Data

Reproduction studies have been performed in rats at 20 mg/kg/day (0.13 times the maximum recommended human daily dose of 1200 mg/day based on body surface area comparison), rabbits at 20 mg/kg/day (0.26 times the maximum recommended human daily dose, based on body surface area comparison), and mice at 170 mg/kg/day (0.6 times the maximum recommended human daily dose based on body surface area comparison) with no evidence of impaired fertility or harm to the fetus due to the drug. Based on animal data, prostaglandins have been shown to have an important role in endothelial vascular permeability, placental implantation, and decidualization. In animal studies, administration of prostaglandin synthesis inhibitors such as naproxen resulted in increased pre- and post-implantation loss.

Labor and Delivery

There are no studies on the effects of naproxen delayed-release tablets during labor or delivery. In animal studies, NSAIDs, including naproxen, inhibit prostaglandin synthesis, cause delayed parturition, and increase the incidence of stillbirths.

Nursing Mothers

The naproxen anion has been found in the milk of lactating women at a concentration equivalent to approximately 1% of maximum naproxen concentration in plasma. The developmental and health benefits of breastfeeding should be considered along with the mother's clinical need for naproxen delayed-release tablets and any potential adverse effects on the breastfed infant from the naproxen delayed-release tablets or from the underlying maternal condition.

Females and Males of Reproductive Potential

Based on the mechanism of action, the use of prostaglandin-mediated NSAIDs, including naproxen tablets, may delay or prevent rupture of ovarian follicles, which has been associated with reversible infertility in some women. Published animal studies have shown that administration of prostaglandin synthesis inhibitors has the potential to disrupt prostaglandin-mediated follicular rupture required for ovulation. Small studies in women treated with NSAIDs have also shown a reversible delay in ovulation.

Consider withdrawal of NSAIDs, including naproxen delayed-release tablets, in women who have difficulties conceiving or who are undergoing investigation of infertility.

Pediatric Use

Safety and effectiveness in pediatric patients below the age of 2 years have not been established. Pediatric dosing recommendations for juvenile arthritis are based on well-controlled studies (see DOSAGE AND ADMINISTRATION). There are no adequate effectiveness or dose-response data for other pediatric conditions, but the experience in juvenile arthritis and other use experience have established that single doses of 25 to 50 mg/kg naproxen suspension, (see DOSAGE AND ADMINISTRATION), with total daily dose not exceeding 15 mg/kg/day, are well tolerated in pediatric patients over 2 years of age. Safety and effectiveness in pediatric patients below the age of 2 years have not been established.

Geriatric Use

Elderly patients, compared to younger patients, are at greater risk for NSAID-associated serious cardiovascular, gastrointestinal, and/or renal adverse reactions. If the anticipated benefit for the elderly patient outweighs these potential risks, start dosing at the low end of the dosing range, and monitor patients for adverse effects (see WARNINGS: Cardiovascular Thrombotic Events, Gastrointestinal Bleeding, Ulceration, and Perforation, Hepatotoxicity, Renal Toxicity and Hypertension, PRECAUTIONS: Laboratory Monitoring).

Studies indicate that although total plasma concentration of naproxen is unchanged, the unbound plasma fraction of naproxen is increased in the elderly. Caution is advised when high doses are required and some adjustment of dosage may be required in elderly patients. As with other drugs used in the elderly, it is prudent to use the lowest effective dose.

Experience indicates that geriatric patients may be particularly sensitive to certain adverse effects of nonsteroidal anti-inflammatory drugs. Elderly or debilitated patients seem to tolerate peptic ulceration or bleeding less well when these events do occur. Most spontaneous reports of fatal GI events are in the geriatric population (see WARNINGS: Gastrointestinal Bleeding, Ulceration, and Perforation).

Naproxen is known to be substantially excreted by the kidney, and the risk of toxic reactions to this drug may be greater in patients with impaired renal function. Because elderly patients are more likely to have decreased renal function, care should be taken in dose selection, and it may be useful to monitor renal function. Geriatric patients may be at greater risk for the development of a form of renal toxicity precipitated by reduced prostaglandin formation during administration of nonsteroidal anti-inflammatory drugs (see WARNINGS: Renal Toxicity and Hypertension).

ADVERSE REACTIONS

The following adverse reactions are discussed in greater detail in other sections of the labeling:

- Cardiovascular Thrombotic Events (see WARNINGS)
- GI Bleeding, Ulceration and Perforation (see WARNINGS)
- Hepatotoxicity (see WARNINGS)
- Hypertension (see WARNINGS)
- Heart Failure and Edema (see WARNINGS)
- Renal Toxicity and Hypertension (see WARNINGS)
- Anaphylactic Reactions (see WARNINGS)
- Serious Skin Reactions (see WARNINGS)
- Hematologic Toxicity (see WARNINGS)

Adverse reactions reported in controlled clinical trials in 960 patients treated for rheumatoid arthritis or osteoarthritis are listed below. In general, reactions in patients treated chronically were reported 2 to 10 times more frequently than they were in short-term studies in the 962 patients treated for mild to moderate pain or for dysmenorrhea. The most frequent complaints reported related to the gastrointestinal tract.

A clinical study found gastrointestinal reactions to be more frequent and more severe in rheumatoid arthritis patients taking daily doses of 1200 mg naproxen compared to those taking 750 mg naproxen (see CLINICAL PHARMACOLOGY).

In controlled clinical trials with about 800 pediatric patients and in well-monitored, open-label studies with about 400 pediatric patients with juvenile arthritis treated with naproxen, the incidence of each and prolonged bleeding times were increased, the incidence of gastrointestinal and central nervous system reactions were about the same, and the incidence of other reactions were lower in pediatric patients than in adults.

In patients taking naproxen in clinical trials, the most frequently reported adverse experiences in approximately 1% to 10% of patients are:

Gastrointestinal (GI) Experiences, including: heartburn*, abdominal pain*, nausea*, constipation*, diarrhea, dyspepsia, somnolence

Central Nervous System: headache*, dizziness*, drowsiness*, lightheadedness, vertigo

Dermatologic: pruritus (itching)*, skin eruptions*, ecchymoses*, sweating, purpura

Special Senses: tinnitus*, visual disturbances, hearing disturbances

Cardiovascular: edema*, palpitations

General: dizziness*, thirst

*Incidence of reported reaction between 3% and 9%. Those reactions occurring in less than 3% of the patients are unmarked.

In patients taking NSAIDs, the following adverse experiences have also been reported in approximately 1% to 10% of patients.

Gastrointestinal (GI) Experiences, including: flatulence, gross bleeding/perforation, GI ulcers (gastro-duodenal), vomiting

General: abnormal renal function, anuria, elevated liver enzymes, increased bleeding time, edema

The following are additional adverse experiences reported in <1% of patients taking naproxen during clinical trials and through postmarketing reports. Those adverse reactions observed through postmarketing reports are italicized.

Body as a Whole: anaphylactoid reactions, angioedematous edema, menstrual disorders, *pruritis (chills and fever)*

Cardiovascular: congestive heart failure, *vasculitis*, hypertension, pulmonary edema

Gastrointestinal: inflammation, bleeding (sometimes fatal particularly in the elderly), ulceration, perforation and obstruction of the upper or lower gastrointestinal tract, Esophagitis, stomatitis, hemorrhoids, paronychia, vomiting, colitis, exacerbation of inflammatory bowel disease (ulcerative colitis, Crohn's disease).

Hepatobiliary: jaundice, abnormal liver function tests, hepatitis (some cases have been fatal)

Head and Lymphatic: otosiphilia, leukopenia, myeloma, myelofibrosis, thrombocytopenia, agranulocytosis, granulocytopenia, hemolytic anemia, aplastic anemia

Metabolic and Nutritional: hyperglycemia, hypoglycemia

Nervous System: inability to concentrate, depression, dream abnormalities, insomnia, *malaria*, myalgia, muscle weakness, *organic meningitis*, cognitive dysfunction, convulsions

Respiratory: eosinophilic pneumonitis, asthma

Dermatologic: alopecia, urticaria, skin rashes, toxic epidermal necrolysis, erythema multiforme, erythema nodosum, *fluid drug eruption*, lichen planus, pustular reaction, systemic lupus erythematosus, bullous reactions, including Stevens-Johnson syndrome, photosensitive dermatitis, photosensitivity reactions, including rare cases resembling porphyria cutanea tarda (pseudoporphyria) or epidermolysis bullosa. If skin fragility, blistering or other symptoms suggestive of pseudoporphyria occur, treatment should be discontinued and the patient monitored.

Special Senses: hearing impairment, corneal opacity, papillitis, retrobulbar optic neuritis, papilledema

Urogenital: glomerular nephritis, hematuria, hyperkalemia, interstitial nephritis, nephrotic syndrome, renal disease, renal failure, renal papillary necrosis, renal artery stenosis

Reproduction (female): infertility

In patients taking NSAIDs, the following adverse experiences have also been reported in <1% of patients.

Body as a Whole: fever, infection, sepsis, anaphylactic reactions, appetite changes, death

Cardiovascular: hypertension, tachycardia, syncope, arrhythmia, hypotension, myocardial infarction

Gastrointestinal: dry mouth, esophagitis, gastric/peptic ulcers, gastritis, glossitis, eructation

Hepatobiliary/hepatic: liver failure

Head and Lymphatic: rectal bleeding, lymphadenopathy, pancytopenia

Metabolic and Nutritional: weight changes

Nervous System: anxiety, ataxia, confusion, nervousness, paresthesia, somnolence, tremors, convulsions, coma, hallucinations

Respiratory: asthma, respiratory depression, pneumonia

Dermatologic: exfoliative dermatitis

Special Senses: blurred vision, conjunctivitis

Urogenital: cystitis, dysuria, oliguria/polyuria, prostaticitis

OVERDOSAGE

Symptoms following acute NSAID overdosage have been typically limited to lethargy, drowsiness, nausea, vomiting, and epigastric pain, which have been generally reversible with supportive care. Gastrointestinal bleeding has occurred. Hypertension, acute renal failure, respiratory depression, and coma have occurred, but were rare. Because naproxen sodium may be rapidly absorbed, high and early blood levels should be anticipated. A few patients have experienced convulsions, but it is not clear whether or not these were drug-related. It is not known what dose of the drug would be life threatening. (see WARNINGS: Cardiovascular Thrombotic Events, Gastrointestinal Bleeding, Ulceration, and Perforation, Hypertension, Renal Toxicity and Hypokalemia)

Manage patients with symptomatic and supportive care following an NSAID overdosage. There are no specific antidotes. Hemodialysis does not increase the plasma concentration of naproxen because of the high degree of its protein binding. Consider emesis and/or activated charcoal (50 to 100 g in adults, 1 to 2 g/kg of body weight in pediatric patients) and/or osmotic cathartic in symptomatic patients seen within four hours of ingestion or in patients with a large overdosage (5 to 10 times the recommended dosage). Forced diuresis, alkalization of urine, hemodialysis, or hemoperfusion may not be useful due to high protein binding.

For additional information about overdosage treatment contact a poison control center (1-800-222-1222).

DO dosage AND ADMINISTRATION

Carefully consider the potential benefits and risks of naproxen delayed-release tablets and other treatment options before deciding to use naproxen delayed-release tablets. Use the lowest effective dose for the shortest duration consistent with individual patient treatment goals (see WARNINGS: Gastrointestinal Bleeding, Ulceration, and Perforation).

After observing the response to initial therapy with naproxen delayed-release tablets, the dose and frequency should be adjusted to suit an individual patient's needs.

Different dose strengths and formulations (i.e., tablets, suspension) of the drug are not necessarily interchangeable. This difference should be taken into consideration when changing formulations.

Although naproxen tablets, naproxen suspension, naproxen delayed-release tablets, and naproxen sodium tablets all circulate in the plasma as naproxen, they have pharmacokinetic differences that may affect onset of action. Because naproxen delayed-release tablets dissolves in the small intestine rather than in the stomach, the absorption of the drug is delayed compared to the other naproxen formulations (see CLINICAL PHARMACOLOGY).

The recommended strategy for initiating therapy is to choose a formulation and a starting dose likely to be effective for the patient and then adjust the dosage based on observation of benefit and/or adverse events. A lower dose should be considered in patients with renal or hepatic impairment or in elderly patients (see WARNINGS: Hepatotoxicity, and Renal Toxicity and Hypokalemia, and PRECAUTIONS: Geriatric Use).

Geriatric Patients

Studies indicate that although total plasma concentration of naproxen is unchanged, the unbound plasma fraction of naproxen is increased in the elderly. Caution is advised when high doses are required and some adjustment of dosage may be required in elderly patients. As with other drugs used in the elderly, it is prudent to use the lowest effective dose.

Patients With Moderate to Severe Renal Impairment

Naproxen-containing products are not recommended for use in patients with moderate to severe and severe renal impairment (creatinine clearance <30 mL/min) (see WARNINGS: Renal Effects).

Rheumatoid Arthritis, Osteoarthritis, and Ankylosing Spondylitis

Naproxen Delayed-release Tablets	375 mg or 500 mg	twice daily twice daily
----------------------------------	------------------	----------------------------

To maintain the integrity of the enteric coating, the naproxen delayed-release tablets should not be broken, crushed, or chewed during ingestion.

During long-term administration, the dose of naproxen may be adjusted up or down depending on the clinical response of the patient. A lower daily dose may suffice for long-term administration. The morning and evening doses do not have to be equal in size and the administration of the drug more frequently than twice daily is not necessary.

In patients who tolerate lower doses well, the dose may be increased to naproxen 1500 mg/day for limited periods of up to 6 months when a higher level of anti-inflammatory/analgesic activity is required. When treating such patients with naproxen 1500 mg/day, the physician should observe sufficient increased clinical benefit to offset the potential increased risk. The morning and evening doses do not have to be equal in size and administration of the drug more frequently than twice daily does not generally make a difference in response (see CLINICAL PHARMACOLOGY).

Juvenile Arthritis

The recommended total daily dose of naproxen is approximately 10 mg/kg given in 2 divided doses (i.e. 5 mg/kg given twice a day). Naproxen delayed-release tablets are not well suited to this dosage so use of naproxen suspension is recommended for this indication.

Management of Pain, Primary Dysmenorrhea, and Acute Tendinitis and Bursitis

Naproxen delayed-release tablets are not recommended for initial treatment of acute pain because absorption of naproxen is delayed compared to other naproxen-containing products (see CLINICAL PHARMACOLOGY, INDICATIONS AND USAGE).

Acute Gout

Naproxen delayed-release tablets are not recommended because of the delay in absorption (see CLINICAL PHARMACOLOGY).

HOW SUPPLIED

Naproxen Delayed-release Tablets USP: 375 mg; White Enteric coated, Capsule-shaped, bisconvex tablets de-bossed with "11" on one side, supplied in:

Bottles of 14's count (NDC 71205-060-14)

Bottles of 15's count (NDC 71205-060-15)

Bottles of 20's count (NDC 71205-060-20)

Bottles of 30's count (NDC 71205-060-30)

Bottles of 40's count (NDC 71205-060-40)

Bottles of 45's count (NDC 71205-060-45)

Bottles of 60's count (NDC 71205-060-60)

Bottles of 90's count (NDC 71205-060-90)

Store at 20° to 25°C (68° to 77°F). (See USP Controlled Room Temperature).

Dispense in tight, light-resistant containers.

*All brand names mentioned are registered trademark of their respective owners and are not of Cipla Limited.

Revised: 07/2016

Medication Guide for Nonsteroidal Anti-inflammatory Drugs (NSAIDs)

What is the most important information I should know about medicines called Non-Steroidal Anti-inflammatory Drugs (NSAIDs)?

NSAIDs can cause serious side effects, including:

- **Increased risk of a heart attack or stroke that can lead to death.** This risk may happen
 - o with increasing doses of NSAIDs
 - o with longer use of NSAIDs

Do not take NSAIDs right before or after a heart surgery called a "coronary artery bypass graft (CABG)." Avoid taking NSAIDs after a recent heart attack, unless your healthcare provider tells you to. You may have an increased risk of another heart attack if you take NSAIDs after a recent heart attack.

- **Increased risk of bleeding, ulcers, and tears (perforation) of the esophagus (tube leading from the mouth to the stomach), stomach and intestines:**

- o any time during use
- o without warning symptoms
- o that may cause death

The risk of getting an ulcer or bleeding increases with:

- past history of stomach ulcers, or stomach or intestinal bleeding with use of NSAIDs
- taking medicines called "corticosteroids," "anticoagulants," "SSRIs," or "SNRIs"
- increasing doses of NSAIDs
- longer use of NSAIDs
- smoking
- drinking alcohol
- older age
- poor health
- advanced liver disease
- bleeding problems

NSAIDs should only be used:

- exactly as prescribed
- at the lowest dose possible for your treatment
- for the shortest time needed

What are NSAIDs?

NSAIDs are used to treat pain and redness, swelling, and heat (inflammation) from medical conditions such as different types of arthritis, menstrual cramps, and other types of short-term pain.

Who should not take NSAIDs?

Do not take NSAIDs:

- if you have had an asthma attack, hives, or other allergic reaction with aspirin or any other NSAIDs.
- right before or after heart bypass surgery.

Before taking NSAIDs, tell your healthcare provider about all of your medical conditions, including if you:

- have liver or kidney problems
- have high blood pressure
- have asthma
- are pregnant or plan to become pregnant. Talk to your healthcare provider if you are considering taking NSAIDs during pregnancy. **You should not take NSAIDs after 29 weeks of pregnancy.**
- are breastfeeding or plan to breastfeed.

Tell your healthcare provider about all of the medicines you take, including prescription or over-the-counter medicines, vitamins or herbal supplements. NSAIDs and some other medicines can interact with each other and cause serious side effects. **Do not start taking any new medicine without talking to your healthcare provider first.**

What are the possible side effects of NSAIDs?

NSAIDs can cause serious side effects, including:

See **"What is the most important information I should know about medicines called Nonsteroidal Anti-inflammatory Drugs (NSAIDs)?"**

- new or worse high blood pressure
- heart failure
- liver problems including liver failure
- kidney problems including kidney failure
- low red blood cells (anemia)
- life-threatening skin reactions
- life-threatening allergic reactions
- **Other side effects of NSAIDs include:** stomach pain, constipation, diarrhea, gas, heartburn, nausea, vomiting, and dizziness.

Get emergency help right away if you have any of the following symptoms:

- shortness of breath or trouble breathing
- chest pain
- weakness in one part or side of your body
- slurred speech
- swelling of the face or throat

Stop taking your NSAID and call your healthcare provider right away if you get any of the following symptoms:

- nausea
- more tired or weaker than usual
- diarrhea
- itching
- your skin or eyes look yellow
- indigestion or stomach pain
- flu-like symptoms
- vomit blood
- there is blood in your bowel movement or it is black and sticky like tar

- unusual weight gain
- skin rash or blisters with fever
- swelling of the arms, legs, hands and feet

If you take too much of your NSAID, call your healthcare provider or get medical help right away.

There are not all the possible side effects of NSAIDs. For more information, ask your healthcare provider or pharmacist about NSAIDs.

Call your doctor for medical advice about side effects. You may report side effects to FDA at 1-800-FDA-1088.

Other information about NSAIDs:

- Aspirin is an NSAID medicine but it does not increase the chance of a heart attack. Aspirin can cause bleeding in the brain, stomach, and intestines. Aspirin can also cause ulcers in the stomach and intestines.
- Some NSAIDs are sold in lower doses without a prescription (over-the-counter). Talk to your healthcare provider before using over-the-counter NSAIDs for more than 10 days.

General information about the safe and effective use of NSAIDs

Medicines are sometimes prescribed for purposes other than those listed in a Medication Guide. Do not use NSAIDs for a condition for which it was not prescribed. Do not give NSAIDs to other people, even if they have the same symptoms that you have. It may harm them.

If you would like more information about NSAIDs, talk with your healthcare provider. You can ask your pharmacist or healthcare provider for information about NSAIDs that is written for health professionals.

This Medication Guide has been approved by the U.S. Food and Drug Administration.

Rx only

Manufactured for:

Cipla USA Inc.,

9100 S. Dadeland Blvd., Suite 1500

Miami, FL 33156

Manufactured by:

InsGen Pharmaceuticals, Inc.

(a subsidiary of Cipla Ltd.)

Hauppauge, NY 11788

Revised: 06/2016

Barcode: 852-056-2016

SAP Code: 21056627

Repackaged By:

Proficient Rx LP

Thousand Oaks, CA 91320

PACKAGE LABEL/PRINCIPAL DISPLAY PANEL

NDC 71205-060-60 Rx ONLY

Naproxen

Delayed-release

Tablets, USP

375 mg

PHARMACIST:

Dispense the Medication Guide

provided separately to each patient.

60 Tablets

Naproxen EC 375mg
 #60 DR Tablets
 Dispense the Medication Guide provided separately to each patient.
 Each tablet contains 375 mg naproxen, USP.

NAPROXEN				
naproxen tablet, delayed release				
Product Information				
Product Type	HUMAN PRESCRIPTION DRUG	Inun Code (Source)	NDC71205-060(NDC-8997-851)	
Route of Administration	ORAL			
Active Ingredient/Active Moiety				
Ingredient Name	Rank of Strength	Strength		
NAPROXEN (UNE STYRENIAT) (NAPROXEN - UNETHYNIATED)	NAPROXEN	375 mg		
Inactive Ingredients				
Ingredient Name	Strength			
POVIDONE, UNDFORMED (UNE F2016G04-01)				
SILICON DIOXIDE (UNE C17143101)				
MAGNESIUM STEARATE (UNE 70197M030)				
ETHYLCELLULOSE (UNE 840111001)				
METHACRYLIC ACID-ETHYL ACRYLATE COPOLYMER (LS) TYPE A (UNE N5115101)				
TALC (UNE 70177001)				
TITANIUM DIOXIDE (UNE 15293V01)				
TRIETHYL CITRATE (UNE 123423010)				
WATER (UNE 15293R010)				
Product Characteristics				
Color	WHITE (overexposed)	Score	no score	
Shape	CAPULET (Hexagon)	Mark	none	
Header		Imprint Code	H	
Contains				
Packaging				
#	Item Code	Package Description	Marketing Start Date	Marketing End Date
1	NDC 71205-060-34	34 in 1 BOTTLE, Type 0, Not a Combination Product	04/02/08	
2	NDC 71205-060-01	01 in 1 BOTTLE, Type 0, Not a Combination Product	04/02/08	
3	NDC 71205-060-20	20 in 1 BOTTLE, Type 0, Not a Combination Product	04/02/08	
4	NDC 71205-060-30	30 in 1 BOTTLE, Type 0, Not a Combination Product	04/02/08	
5	NDC 71205-060-40	40 in 1 BOTTLE, Type 0, Not a Combination Product	04/02/08	
6	NDC 71205-060-45	45 in 1 BOTTLE, Type 0, Not a Combination Product	04/02/08	
7	NDC 71205-060-48	48 in 1 BOTTLE, Type 0, Not a Combination Product	04/02/08	
8	NDC 71205-060-60	60 in 1 BOTTLE, Type 0, Not a Combination Product	04/02/08	
Marketing Information				
Marketing Category	Application Number or Monograph Citation	Marketing Start Date	Marketing End Date	
NDA	ANDA013482	07/12/06		
Labeler - Proficient Rx LP (071306022)				
Establishment				
Name	Address	RTE	Business Operations	
Proficient Rx LP		07036622	REPAC71205-040, BELABEL71205-060	

Revised: 10/2019

Proficient Rx LP