

**FLUOXETINE - fluoxetine capsule**  
**Alembic Pharmaceuticals Limited**

**HIGHLIGHTS OF PRESCRIBING INFORMATION**

These highlights do not include all the information needed to use Fluoxetine Capsules safely and effectively. See full prescribing information for Fluoxetine Capsules.

Fluoxetine Capsules for oral use

Initial U.S. Approval: 1987

**WARNING: SUICIDAL THOUGHTS AND BEHAVIORS**

See full prescribing information for complete boxed warning.

- Increased risk of suicidal thinking and behavior in children, adolescents, and young adults taking antidepressants (5.1).
- Monitor for worsening and emergence of suicidal thoughts and behaviors (5.1).  
*When using fluoxetine and olanzapine in combination, also refer to Boxed Warning section of the package insert for Symbyax.*

**RECENT MAJOR CHANGES**

**Warnings and Precautions:**

Angle-Closure Glaucoma (5.8) 08/2014

**INDICATIONS AND USAGE**

Fluoxetine is a selective serotonin reuptake inhibitor indicated for:

- Acute and maintenance treatment of Major Depressive Disorder (MDD) (1)
- Acute and maintenance treatment of Obsessive Compulsive Disorder (OCD)(1)
- Acute and maintenance treatment of Bulimia Nervosa (1)
- Acute treatment of Panic Disorder, with or without agoraphobia(1)

Fluoxetine and olanzapine in combination for treatment of:

- Acute treatment of Depressive Episodes Associated with Bipolar I Disorder in adults (1) (1)

**DOSAGE AND ADMINISTRATION**

<b>Indication</b>	<b>Adult</b>	<b>Pediatric</b>
MDD (2.1)	20 mg/day in am (initial dose)	10 to 20 mg/day (initial dose)
OCD (2.2)	20 mg/day in am (initial dose)	10 mg/day (initial dose)
Bulimia Nervosa (2.3)	60 mg/day in am	-
Panic Disorder (2.4)	10 mg/day (initial dose)	-
Depressive Episodes Associated with Bipolar I Disorder (2.5)	Oral in combination with olanzapine: 5 mg of oral olanzapine and 20 mg of fluoxetine once daily (initial dose)	-

A lower or less frequent dosage should be used in patients with hepatic impairment, the elderly, and for patients with concurrent disease or on multiple concomitant medications (2.7) (2)

*Fluoxetine and olanzapine in combination:* (2)

Dosage adjustments, if indicated, should be made with the individual components according to efficacy and tolerability (2.5) (2)

Fluoxetine monotherapy is not indicated for the treatment of Depressive Episodes associated with Bipolar I Disorder(2.5) (2)

Safety of the coadministration of doses above 18 mg olanzapine with 75 mg fluoxetine has not been evaluated (2.5) (2)

**DOSAGE FORMS AND STRENGTHS**

- Capsules: 10 mg, 20 mg, 40 mg (3)

**CONTRAINDICATIONS**

- Serotonin Syndrome and MAOIs: Do not use MAOIs intended to treat psychiatric disorders with fluoxetine or within 5 weeks of stopping treatment with fluoxetine. Do not use fluoxetine within 14 days of stopping an MAOI intended to treat psychiatric disorders. In addition, do not start fluoxetine in a patient who is being treated with linezolid or intravenous methylene blue (4.1)

- Pimozide: Do not use. Risk of QT prolongation and drug interaction (4.2, 5.11, 7.7, 7.8)
- Thioridazine: Do not use. Risk of QT interval prolongation and elevated thioridazine plasma levels. Do not use thioridazine within 5 weeks of discontinuing fluoxetine Do not use thioridazine within 5 weeks of discontinuing fluoxetine (4.2, 5.11, 7.7, 7.8).
- When using fluoxetine and olanzapine in combination, also refer to the Contraindications section of the package insert for olanzapine and fluoxetine hydrochloride capsules (4)

#### ----- WARNINGS AND PRECAUTIONS -----

- *Suicidal Thoughts and Behaviors in Children, Adolescents, and Young Adults:* Monitor for clinical worsening and suicidal thinking and behavior (5.1)
- *Serotonin Syndrome:* Serotonin syndrome has been reported with SSRIs and SNRIs, including fluoxetine, both when taken alone, but especially when co-administered with other serotonergic agents (including triptans, tricyclic antidepressants, fentanyl, lithium, tramadol, tryptophan, buspirone and St. John's Wort). If such symptoms occur, discontinue fluoxetine and initiate supportive treatment. If concomitant use of fluoxetine with other serotonergic drugs is clinically warranted, patients should be made aware of a potential increased risk for serotonin syndrome, particularly during treatment initiation and dose increases. (5.2)
- *Allergic Reactions and Rash:* Discontinue upon appearance of rash or allergic phenomena (5.3)
- *Activation of Mania/Hypomania:* Screen for Bipolar Disorder and monitor for mania/hypomania (5.4)
- *Seizures:* Use cautiously in patients with a history of seizures or with conditions that potentially lower the seizure threshold (5.5)
- *Altered Appetite and Weight:* Significant weight loss has occurred (5.6)
- *Abnormal Bleeding:* May increase the risk of bleeding. Use with NSAIDs, aspirin, warfarin, or other drugs that affect coagulation may potentiate the risk of gastrointestinal or other bleeding (5.7)
- *Angle-Closure Glaucoma:* Angle-closure glaucoma has occurred in patient with untreated anatomically narrow angle treated with anti depressants. (5.8)
- *Hyponatremia:* Has been reported with fluoxetine in association with syndrome of inappropriate antidiuretic hormone (SIADH). Consider discontinuing if symptomatic hyponatremia occurs (5.9)
- *Anxiety and Insomnia:* May occur (5.10)
- *QT Prolongation:* QT prolongation and ventricular arrhythmia including Torsades de Pointes have been reported with fluoxetine use. Use with caution in conditions that predispose to arrhythmias or increased fluoxetine exposure. Use cautiously in patients with risk factors for QT prolongation (4.2, 5.11, 7.7, 7.8, 10.1)
- *Potential for Cognitive and Motor Impairment:* Has potential to impair judgment, thinking, and motor skills. Use caution when operating machinery (5.13)
- *Long Half-Life:* Changes in dose will not be fully reflected in plasma for several weeks (5.14)
- *Fluoxetine and Olanzapine in Combination:* When using fluoxetine and olanzapine in combination, also refer to the Warnings and Precautions section of the package insert for olanzapine and fluoxetine hydrochloride capsules (5.16)

#### ----- ADVERSE REACTIONS -----

Most common adverse reactions (≥5% and at least twice that for placebo) associated with:  
Major Depressive Disorder, Obsessive Compulsive Disorder, Bulimia, and Panic Disorder: abnormal dreams, abnormal ejaculation, anorexia, anxiety, asthenia, diarrhea, dry mouth, dyspepsia, flu syndrome, impotence, insomnia, libido decreased, nausea, nervousness, pharyngitis, rash, sinusitis, somnolence, sweating, tremor, vasodilatation, and yawn (6.1)

Fluoxetine and olanzapine in combination – Also refer to the Adverse Reactions section of the package insert for olanzapine and fluoxetine hydrochloride capsules (6)

**To report SUSPECTED ADVERSE REACTIONS, contact FDA at 1-800-FDA-1088 or [www.fda.gov/medwatch](http://www.fda.gov/medwatch)**

#### ----- DRUG INTERACTIONS -----

- Monoamine Oxidase Inhibitors (MAOI): (2.9, 2.10, 4.1, 5.2)
- Drugs Metabolized by CYP2D6: Fluoxetine is a potent inhibitor of CYP2D6 enzyme pathway (7.7)
- Tricyclic Antidepressants (TCAs): Monitor TCA levels during coadministration with fluoxetine or when fluoxetine has been recently discontinued (5.2, 7.7)
- CNS Acting Drugs: Caution should be used when taken in combination with other centrally acting drugs (7.2)
- Benzodiazepines: Diazepam – increased t<sub>1/2</sub>, alprazolam - further psychomotor performance decrement due to increased levels (7.7)
- Antipsychotics: Potential for elevation of haloperidol and clozapine levels (7.7)
- Anticonvulsants: Potential for elevated phenytoin and carbamazepine levels and clinical anticonvulsant toxicity (7.7)
- Serotonergic Drugs: (2.9, 2.10, 4.1, 5.2)
- Drugs that Interfere with Hemostasis (e.g. NSAIDs, Aspirin, Warfarin): May potentiate the risk of bleeding (7.4)
- Drugs Tightly Bound to Plasma Proteins: May cause a shift in plasma concentrations (7.6, 7.7)
- Olanzapine: When used in combination with fluoxetine, also refer to the Drug Interactions section of the package insert for olanzapine and fluoxetine hydrochloride capsules (7.7)
- Drugs that Prolong the QT Interval: Do not use fluoxetine with thioridazine or pimozide. Use with caution in combination with other drugs that prolong the QT interval (4.2, 5.11, 7.7, 7.8)

#### ----- USE IN SPECIFIC POPULATIONS -----

- *Pregnancy:* Fluoxetine should be used during pregnancy only if the potential benefit justifies the potential risks to the fetus (8.1)
- *Nursing Mothers:* Breast feeding is not recommended (8.3)
- *Pediatric Use:* Safety and effectiveness of fluoxetine and olanzapine in combination in patients <18 years of age for depressive episodes associated with Bipolar I Disorder have not been established. (8.4)
- *Hepatic Impairment:* Lower or less frequent dosing may be appropriate in patients with cirrhosis (8.6)
- *Information for pediatric patients (10 to 17 years)* is approved for Eli Lilly and Company's Fluoxetine Capsules. However due to Eli Lilly and Company's marketing exclusivity rights, this drug product is not labeled with that pediatric information.

**See 17 for PATIENT COUNSELING INFORMATION and Medication Guide.**

**Revised: 1/2023**

---

**FULL PRESCRIBING INFORMATION: CONTENTS\***

**WARNING: SUICIDAL THOUGHTS AND BEHAVIORS**

**1. INDICATIONS AND USAGE**

**2. DOSAGE AND ADMINISTRATION**

- 2.1. Major Depressive Disorder
- 2.2. Obsessive Compulsive Disorder
- 2.3. Bulimia Nervosa
- 2.4. Panic Disorder
- 2.5. Fluoxetine and Olanzapine in Combination: Depressive Episodes Associated with Bipolar I Disorder
- 2.7. Dosing in Specific Populations
- 2.8. Discontinuation of Treatment
- 2.9 Switching a Patient To or From a Monoamine Oxidase Inhibitor (MAOI) Intended to Treat Psychiatric Disorders
- 2.10 Use of Fluoxetine with Other MAOIs such as Linezolid or Methylene Blue

**3. DOSAGE FORMS AND STRENGTHS**

**4. CONTRAINDICATIONS**

- 4.1 Monoamine Oxidase Inhibitors (MAOIs)
- 4.2 Other Contraindications

**5. WARNINGS AND PRECAUTIONS**

- 5.1. Suicidal Thoughts and Behaviors in Children, Adolescents, and Young Adults
- 5.2. Serotonin Syndrome
- 5.3. Allergic Reactions and Rash
- 5.4. Screening Patients for Bipolar Disorder and Monitoring for Mania/Hypomania
- 5.5. Seizures
- 5.6. Altered Appetite and Weight
- 5.7. Abnormal Bleeding
- 5.8 Angle-Closure Glaucoma
- 5.9. Hyponatremia
- 5.10. Anxiety and Insomnia
- 5.11. QT Prolongation
- 5.12. Use in Patients with Concomitant Illness
- 5.13. Potential for Cognitive and Motor Impairment
- 5.14. Long Elimination Half-Life
- 5.15. Discontinuation of Adverse Reactions
- 5.16 Fluoxetine and Olanzapine in Combination

**6. ADVERSE REACTIONS**

- 6.1. Clinical Trials Experience
- 6.2. Other Reactions
- 6.3. Postmarketing Experience

**7. DRUG INTERACTIONS**

- 7.1. Monoamine Oxidase Inhibitors (MAOI)
- 7.2. CNS Acting Drugs
- 7.3. Serotonergic Drugs
- 7.4 Drugs that Interfere with Hemostasis (e.g., NSAIDs, Aspirin, Warfarin)
- 7.5 Electroconvulsive Therapy (ECT)
- 7.6 Potential for Other Drugs to affect fluoxetine
- 7.7 Potential for fluoxetine to affect Other Drugs
- 7.8 Drugs that Prolong the QT Interval

**8. USE IN SPECIFIC POPULATIONS**

- 8.1. Pregnancy
- 8.2. Labor and Delivery
- 8.3. Nursing Mothers
- 8.4. Pediatric Use
- 8.5. Geriatric Use
- 8.6. Hepatic Impairment

**9. DRUG ABUSE AND DEPENDENCE**

- 9.3 Dependence

**10. OVERDOSAGE**

- 10.1. Human Experience
- 10.2. Animal Experience
- 10.3. Management of Overdose

**11. DESCRIPTION**

**12. CLINICAL PHARMACOLOGY**

- 12.1. Mechanism of Action
- 12.2. Pharmacodynamics
- 12.3 Pharmacokinetics
- 12.4. Specific Populations

### **13. NONCLINICAL TOXICOLOGY**

- 13.1 Carcinogenesis, Mutagenesis, Impairment of Fertility
- 13.2. Animal Toxicology and/or Pharmacology

### **14. CLINICAL STUDIES**

- 14.1. Major Depressive Disorder
- 14.2. Obsessive Compulsive Disorder
- 14.3. Bulimia Nervosa
- 14.4. Panic Disorder

### **16. HOW SUPPLIED/STORAGE AND HANDLING**

- 16.1. How Supplied
- 16.2. Storage and Handling

### **17. PATIENT COUNSELING INFORMATION**

- 17.1. General Information
- 17.2. Suicidal Thoughts and Behaviors in Children, Adolescents, and Young Adults
- 17.3. Serotonin Syndrome
- 17.4. Allergic Reactions and Rash
- 17.5. Abnormal Bleeding
- 17.6 Angle-Closure Glaucoma
- 17.7. Hyponatremia
- 17.8 QT Prolongation
- 17.9. Potential for Cognitive and Motor Impairment
- 17.10. Use of Concomitant Medications
- 17.11. Discontinuation of Treatment
- 17.12. Use in Specific Populations

\* Sections or subsections omitted from the full prescribing information are not listed.

---

## **FULL PRESCRIBING INFORMATION**

### **WARNING: SUICIDAL THOUGHTS AND BEHAVIORS**

- **Antidepressants increased the risk of suicidal thoughts and behavior in children, adolescents, and young adults in short-term studies. These studies did not show an increase in the risk of suicidal thoughts and behavior with antidepressant use in patients over age 24; there was a reduction in risk with antidepressant use in patients aged 65 and older [see Warnings and Precautions (5.1)].**
  - **In patients of all ages who are started on antidepressant therapy, monitor closely for worsening and for emergence of suicidal thoughts and behaviors. Advise families and caregivers of the need for close observation and communication with the prescriber [see Warnings and Precautions (5.1)].**
  - **Fluoxetine is not approved for use in children less than 7 years of age [see Warnings and Precautions (5.1) and Use in Specific Populations (8.4)].**
- When using Fluoxetine and olanzapine in combination, also refer to Boxed Warning section of the package insert for Symbyax.**

## **1. INDICATIONS AND USAGE**

Fluoxetine is indicated for the treatment of:

- Acute and maintenance treatment of Major Depressive Disorder [see *Clinical Studies (14.1)*].
- Acute and maintenance treatment of obsessions and compulsions in patients with Obsessive Compulsive Disorder (OCD) [see *Clinical Studies (14.2)*].
- Acute and maintenance treatment of binge-eating and vomiting behaviors in patients with moderate to severe Bulimia Nervosa [see *Clinical Studies (14.3)*].
- Acute treatment of Panic Disorder, with or without agoraphobia [see *Clinical*

*Studies (14.4)].*

Fluoxetine and Olanzapine in Combination is indicated for the treatment of:

- Acute treatment of depressive episodes associated with Bipolar I Disorder in adult.

Fluoxetine monotherapy is not indicated for the treatment of depressive episodes associated with Bipolar I Disorder or the treatment of treatment resistant depression.

*When using Fluoxetine and olanzapine in combination, also refer to the Clinical Studies section of the package insert for Symbya® .*

## **2. DOSAGE AND ADMINISTRATION**

### **2.1. Major Depressive Disorder**

#### *Initial Treatment*

##### *Adult -*

Initiate fluoxetine 20 mg/day orally in the morning. Consider a dose increase after several weeks if insufficient clinical improvement is observed. Administer doses above 20 mg/day once daily in the morning or twice daily (i.e., morning and noon). The maximum fluoxetine dose should not exceed 80 mg/day.

In controlled trials used to support the efficacy of fluoxetine, patients were administered morning doses ranging from 20 to 80 mg/day. Studies comparing fluoxetine 20, 40, and 60 mg/day to placebo indicate that 20 mg/day is sufficient to obtain a satisfactory response in Major Depressive Disorder in most cases. *[see Clinical Studies (14.1)].*

*Pediatric (children and adolescents) -* Initiate fluoxetine 10 or 20 mg/day. After 1 week at 10 mg/day, increase the dose to 20 mg/day. However, due to higher plasma levels in lower weight children, the starting and target dose in this group may be 10 mg/day. Consider a dose increase to 20 mg/day after several weeks if insufficient clinical improvement is observed. In the short-term (8 to 9 week) controlled clinical trials of fluoxetine supporting its effectiveness in the treatment of Major Depressive Disorder, patients were administered fluoxetine doses of 10 to 20 mg/day *[see Clinical Studies (14.1)].*

*All patients -* As with other drugs effective in the treatment of Major Depressive Disorder, the full effect may be delayed until 4 weeks of treatment or longer.

Periodically reassess to determine the need for maintenance treatment.

*Switching Patients to a Tricyclic Antidepressant (TCA) -* Dosage of a TCA may need to be reduced, and plasma TCA concentrations may need to be monitored temporarily when fluoxetine is coadministered or has been recently discontinued *[see Warnings and Precautions (5.2) and Drug Interactions (7.7)].*

### **2.2. Obsessive Compulsive Disorder**

#### *Initial Treatment*

*Adult -* Initiate fluoxetine 20 mg/day, orally in the morning. Consider a dose increase after several weeks if insufficient clinical improvement is observed. The full therapeutic effect may be delayed until 5 weeks of treatment or longer. Administer doses above 20 mg/day once daily in the morning or twice daily (i.e., morning and noon). A dose range of 20 to 60 mg/day is recommended; however, doses of up to 80 mg/day have been well tolerated in open studies of OCD. The maximum fluoxetine dose should not exceed 80 mg/day.

In the controlled clinical trials of fluoxetine supporting its effectiveness in the treatment of OCD, patients were administered fixed daily doses of 20, 40, or 60 mg of fluoxetine or placebo *[see Clinical Studies (14.2)].* In one of these studies, no dose-response relationship for effectiveness was demonstrated.

*Pediatric (children and adolescents) -* In adolescents and higher weight children, initiate treatment with a dose of 10 mg/day. After 2 weeks, increase the dose to 20 mg/day. Consider additional dose increases after several more weeks if insufficient clinical improvement is observed. A dose range of 20 to 60 mg/day is recommended.

In lower weight children, initiate treatment with a dose of 10 mg/day. Consider additional dose increases after several more weeks if insufficient clinical improvement is observed. A dose range of 20 to 30 mg/day is recommended. Experience with daily doses greater than 20 mg is very minimal, and there is no experience with doses greater than 60 mg.

In the controlled clinical trial of fluoxetine supporting its effectiveness in the treatment of OCD, patients were administered fluoxetine doses in the range of 10 to 60 mg/day [see *Clinical Studies (14.2)*].

Periodically reassess to determine the need for treatment.

### **2.3. Bulimia Nervosa**

*Initial Treatment* – Administer fluoxetine 60 mg/day in the morning. For some patients it may be advisable to titrate up to this target dose over several days. Fluoxetine doses above 60 mg/day have not been systematically studied in patients with bulimia. In the controlled clinical trials of fluoxetine supporting its effectiveness in the treatment of Bulimia Nervosa, patients were administered fixed daily fluoxetine doses of 20 or 60 mg, or placebo [see *Clinical Studies (14.3)*]. Only the 60 mg dose was statistically significantly superior to placebo in reducing the frequency of binge-eating and vomiting.

Periodically reassess to determine the need for maintenance treatment.

### **2.4. Panic Disorder**

*Initial Treatment* – Initiate treatment with fluoxetine 10 mg/day. After one week, increase the dose to 20 mg/day. Consider a dose increase after several weeks if no clinical improvement is observed. Fluoxetine doses above 60 mg/day have not been systematically evaluated in patients with Panic Disorder. In the controlled clinical trials of fluoxetine supporting its effectiveness in the treatment of Panic Disorder, patients were administered fluoxetine doses in the range of 10 to 60 mg/day [see *Clinical Studies (14.4)*]. The most frequently administered dose in the 2 flexible-dose clinical trials was 20 mg/day.

Periodically reassess to determine the need for continued treatment.

### **2.5. Fluoxetine and Olanzapine in Combination: Depressive Episodes Associated with Bipolar I Disorder**

*When using fluoxetine and olanzapine in combination, also refer to the Clinical Studies section of the package insert for olanzapine and fluoxetine hydrochloride capsules.*

*Adult* — Administer fluoxetine in combination with oral olanzapine once daily in the evening, without regard to meals, generally beginning with 5 mg of oral olanzapine and 20 mg of fluoxetine. Make dosage adjustments, if indicated, according to efficacy and tolerability within dose ranges of fluoxetine 20 to 50 mg and oral olanzapine 5 to 12.5 mg. Antidepressant efficacy was demonstrated with olanzapine and fluoxetine in combination with a dose range of olanzapine 6 to 12 mg and fluoxetine 25 to 50 mg. Safety of co-administration of doses above 18 mg olanzapine with 75 mg fluoxetine has not been evaluated in clinical studies. Periodically re-examine the need for continued pharmacotherapy.

Information for pediatric patients (10 to 17 years) is approved for Eli Lilly and Company's Fluoxetine Capsules. However due to Eli Lilly and Company's marketing exclusivity rights, this drug product is not labeled with that pediatric information.

Safety and efficacy of fluoxetine in combination with olanzapine was determined in clinical trials supporting approval of olanzapine and fluoxetine hydrochloride capsules (fixed-dose combination of olanzapine and fluoxetine). Olanzapine and fluoxetine hydrochloride capsules are dosed between 3 mg/25 mg (olanzapine/fluoxetine) per day and 12 mg/50 mg (olanzapine/fluoxetine) per day. The following table demonstrates the appropriate individual component doses of fluoxetine and olanzapine versus olanzapine and fluoxetine hydrochloride capsules.

Adjust dosage, if indicated, with the individual components according to efficacy and tolerability.

**Table 1: Approximate Dose Correspondence Between Olanzapine and Fluoxetine Hydrochloride Capsules <sup>1</sup> and the Combination of Fluoxetine and Olanzapine**

For Olanzapine and Fluoxetine Hydrochloride Capsules (mg/day)	Use in Combination	
	Olanzapine (mg/day)	Fluoxetine (mg/day)
3 mg olanzapine / 25 mg fluoxetine	2.5	20
6 mg olanzapine / 25 mg fluoxetine	5	20
12 mg olanzapine / 25 mg fluoxetine	10 + 2.5	20
6 mg olanzapine / 50 mg fluoxetine	5	40 + 10
12 mg olanzapine / 50 mg fluoxetine	10 + 2.5	40 + 10

<sup>1</sup> Olanzapine and fluoxetine capsules (olanzapine / fluoxetine HCl) is a fixed-dose combination of fluoxetine and olanzapine.

Fluoxetine monotherapy is not indicated for the treatment of depressive episodes associated with Bipolar I Disorder.

### 2.7. Dosing in Specific Populations

*Treatment of Pregnant Women* -When treating pregnant women with fluoxetine, the physician should carefully consider the potential risks and potential benefits of treatment. Neonates exposed to SSRIs or SNRIs late in the third trimester have developed complications requiring prolonged hospitalization, respiratory support, and tube feeding. [see *Use in Specific Populations* (8.1)].

*Geriatrics* - Consider a lower or less frequent dosage for the elderly [see *Use in Specific Populations* (8.5)]

*Hepatic Impairment* - As with many other medications, a lower or less frequent dosage in patients with hepatic impairment [see *Clinical Pharmacology* (12.4) and *Use in Specific Populations* (8.6)].

*Concomitant Illness* - Patients with concurrent disease or on multiple concomitant medications may require dosage adjustments [see *Clinical Pharmacology* (12.4) and *Warnings and Precautions* (5.12)].

*Fluoxetine and Olanzapine in Combination*- Use a starting dose of oral olanzapine 2.5 to 5 mg with fluoxetine 20 mg for patients with a predisposition to hypotensive reactions, patients with hepatic impairment, or patients who exhibit a combination of factors that may slow the metabolism of olanzapine or fluoxetine in combination (female gender, geriatric age, nonsmoking status), or those patients who may be pharmacodynamically sensitive to olanzapine. Titrate slowly and adjust dosage as needed in patients who exhibit a combination of factors that may slow metabolism.

Fluoxetine and olanzapine in combination have not been systematically studied in patients over 65 years of age or in patients less than 18 years of age [see *Warnings and Precautions* (5.16) and *Drug Interactions* (7.7)].

### 2.8. Discontinuation of Treatment

Symptoms associated with discontinuation of fluoxetine, SNRIs, and SSRIs, have been reported [see *Warnings and Precautions* (5.15)].

### 2.9 Switching a Patient To or From a Monoamine Oxidase Inhibitor (MAOI) Intended to Treat Psychiatric Disorders

At least 14 days should elapse between discontinuation of an MAOI intended to treat psychiatric disorders and initiation of therapy with fluoxetine. Conversely, at least 5 weeks should be allowed after stopping Fluoxetine before starting an MAOI intended to treat psychiatric disorders [see *Contraindications* (4.1)].

### 2.10 Use of Fluoxetine with Other MAOIs such as Linezolid or Methylene Blue

Do not start fluoxetine in a patient who is being treated with linezolid or intravenous methylene blue because there is an increased risk of serotonin syndrome. In a patient who requires more urgent treatment of a psychiatric condition, other interventions, including hospitalization, should be considered [see *Contraindications* (4.1)].

In some cases, a patient already receiving fluoxetine therapy may require urgent treatment with linezolid or intravenous methylene blue. If acceptable alternatives to linezolid or intravenous methylene blue treatment are not available and the potential benefits of linezolid or intravenous methylene blue treatment are judged to outweigh the risks of serotonin syndrome in a particular patient, fluoxetine should be stopped promptly, and linezolid or intravenous methylene blue can be administered. The patient should be monitored for symptoms of serotonin syndrome for five weeks or until 24 hours after the last dose of linezolid or intravenous methylene blue, whichever comes first. Therapy with fluoxetine may be resumed 24 hours after the last dose of linezolid or intravenous methylene blue [see *Warnings and Precautions (5.2)*].

The risk of administering methylene blue by non-intravenous routes (such as oral tablets or by local injection) or in intravenous doses much lower than 1 mg/kg with fluoxetine is unclear. The clinician should, nevertheless, be aware of the possibility of emergent symptoms of serotonin syndrome with such use [see *Warnings and Precautions (5.2)*].

### **3. DOSAGE FORMS AND STRENGTHS**

10 mg, Capsule is Blue opaque cap and white opaque body, imprinted with “10” on the cap and “A105” on the body.

20 mg, Capsule is a Dark blue opaque cap and Light blue opaque body, imprinted with “20” on the cap and “A106” on the body.

40 mg, Capsule is a Light blue opaque cap and Light blue opaque body, imprinted with “40” on the cap and “A107” on the body.

### **4. CONTRAINDICATIONS**

*When using fluoxetine and olanzapine in combination, also refer to the Contraindications section of the package insert for olanzapine and fluoxetine hydrochloride capsules.*

#### **4.1 Monoamine Oxidase Inhibitors (MAOIs)**

The use of MAOIs intended to treat psychiatric disorders with fluoxetine or within 5 weeks of stopping treatment with fluoxetine is contraindicated because of an increased risk of serotonin syndrome. The use of fluoxetine within 14 days of stopping an MAOI intended to treat psychiatric disorders is also contraindicated [see *Dosage and Administration (2.9)* and *Warnings and Precautions (5.2)*].

Starting fluoxetine in a patient who is being treated with MAOIs such as linezolid or intravenous methylene blue is also contraindicated because of an increased risk of serotonin syndrome [see *Dosage and Administration (2.10)* and *Warnings and Precautions (5.2)*].

#### **4.2 Other Contraindications**

The use of fluoxetine is contraindicated with the following:

- Pimozide [see *Warnings and Precautions (5.11)* and *Drug Interactions (7.7, 7.8)*]
- Thioridazine [see *Warnings and Precautions (5.11)* and *Drug Interactions (7.7, 7.8)*]

Pimozide and thioridazine prolong the QT interval. Fluoxetine can increase the levels of pimozide and thioridazine through inhibition of CYP2D6. Fluoxetine can also prolong the QT interval.

### **5. WARNINGS AND PRECAUTIONS**

*When using fluoxetine and olanzapine in combination, also refer to the Warnings and Precautions section of the package insert for olanzapine and fluoxetine hydrochloride capsules.*

#### **5.1. Suicidal Thoughts and Behaviors in Children, Adolescents, and Young Adults**

Patients with Major Depressive Disorder (MDD), both adult and pediatric, may experience worsening of their depression and/or the emergence of suicidal ideation and behavior (suicidality) or unusual changes in behavior, whether or not they are taking antidepressant medications, and this risk may persist until significant remission occurs. Suicide is a known risk of depression and certain other psychiatric disorders, and these disorders themselves are the strongest predictors of suicide. There has been a long-



standing concern, however, that antidepressants may have a role in inducing worsening of depression and the emergence of suicidality in certain patients during the early phases of treatment. Pooled analyses of short-term placebo-controlled trials of antidepressant drugs (SSRIs and others) showed that these drugs increase the risk of suicidal thinking and behavior (suicidality) in children, adolescents, and young adults (ages 18 to 24) with Major Depressive Disorder (MDD) and other psychiatric disorders. Short-term studies did not show an increase in the risk of suicidality with antidepressants compared to placebo in adults beyond age 24; there was a reduction with antidepressants compared to placebo in adults aged 65 and older.

The pooled analyses of placebo-controlled trials in children and adolescents with MDD, Obsessive Compulsive Disorder (OCD), or other psychiatric disorders included a total of 24 short-term trials of 9 antidepressant drugs in over 4400 patients. The pooled analyses of placebo-controlled trials in adults with MDD or other psychiatric disorders included a total of 295 short-term trials (median duration of 2 months) of 11 antidepressant drugs in over 77,000 patients. There was considerable variation in risk of suicidality among drugs, but a tendency toward an increase in the younger patients for almost all drugs studied. There were differences in absolute risk of suicidality across the different indications, with the highest incidence in MDD. The risk differences (drug versus placebo), however, were relatively stable within age strata and across indications. These risk differences (drug-placebo difference in the number of cases of suicidality per 1000 patients treated) are provided in Table 2.

**Table 2: Suicidality per 1000 Patients Treated**

Age Range	Drug-Placebo Difference in Number of Cases of Suicidality per 1000 Patients Treated
	Increases Compared to Placebo
<18	14 additional cases
18 to 24	5 additional cases
	Decreases Compared to Placebo
25 to 64	1 fewer case
≥65	6 fewer cases

No suicides occurred in any of the pediatric trials. There were suicides in the adult trials, but the number was not sufficient to reach any conclusion about drug effect on suicide. It is unknown whether the suicidality risk extends to longer-term use, i.e., beyond several months. However, there is substantial evidence from placebo-controlled maintenance trials in adults with depression that the use of antidepressants can delay the recurrence of depression.

**All patients being treated with antidepressants for any indication should be monitored appropriately and observed closely for clinical worsening, suicidality, and unusual changes in behavior, especially during the initial few months of a course of drug therapy, or at times of dose changes, either increases or decreases.**

The following symptoms, anxiety, agitation, panic attacks, insomnia, irritability, hostility, aggressiveness, impulsivity, akathisia (psychomotor restlessness), hypomania, and mania, have been reported in adult and pediatric patients being treated with antidepressants for Major Depressive Disorder as well as for other indications, both psychiatric and nonpsychiatric. Although a causal link between the emergence of such symptoms and either the worsening of depression and / or the emergence of suicidal impulses has not been established, there is concern that such symptoms may represent precursors to emerging suicidality.

Consideration should be given to changing the therapeutic regimen, including possibly discontinuing the medication, in patients whose depression is persistently worse, or who are experiencing emergent suicidality or symptoms that might be precursors to worsening depression or suicidality, especially if these symptoms are severe, abrupt in onset, or were not part of the patient's presenting symptoms.

If the decision has been made to discontinue treatment, medication should be tapered, as rapidly as is feasible, but with recognition that abrupt discontinuation can be associated with certain symptoms [see *Warnings and Precautions (5.15)*].

**Families and caregivers of patients being treated with antidepressants for Major Depressive Disorder or other indications, both psychiatric and nonpsychiatric, should be alerted about the need to monitor patients for the emergence of agitation, irritability, unusual changes in behavior, and the other symptoms described above, as well as the emergence of suicidality, and to report such symptoms immediately to health care providers. Such monitoring should include daily observation by families and caregivers.**

Prescriptions for fluoxetine should be written for the smallest quantity of capsules consistent with good patient management, in order to reduce the risk of overdose.

It should be noted that fluoxetine is approved in the pediatric population for Major Depressive Disorder and Obsessive Compulsive Disorder. Safety and effectiveness of fluoxetine and olanzapine in combination in patients less than 18 years of age have not been established.

Information for pediatric patients (10 to 17 years) is approved for Eli Lilly and Company's Fluoxetine Capsules. However due to Eli Lilly and Company's marketing exclusivity rights, this drug product is not labeled with that pediatric information.

## **5.2. Serotonin Syndrome**

The development of a potentially life-threatening serotonin syndrome has been reported with SNRIs and SSRIs, including fluoxetine, alone but particularly with concomitant use of other serotonergic drugs (including triptans, tricyclic antidepressants, fentanyl, lithium, tramadol, tryptophan, buspirone, and St. John's Wort) and with drugs that impair metabolism of serotonin (in particular, MAOIs, both those intended to treat psychiatric disorders and also others, such as linezolid and intravenous methylene blue).

Serotonin syndrome symptoms may include mental status changes (e.g., agitation, hallucinations, delirium, and coma), autonomic instability (e.g., tachycardia, labile blood pressure, dizziness, diaphoresis, flushing, hyperthermia), neuromuscular symptoms (e.g., tremor, rigidity, myoclonus, hyperreflexia, incoordination), seizures, and/or gastrointestinal symptoms (e.g., nausea, vomiting, diarrhea). Patients should be monitored for the emergence of serotonin syndrome.

The concomitant use of fluoxetine with MAOIs intended to treat psychiatric disorders is contraindicated. Fluoxetine should also not be started in a patient who is being treated with MAOIs such as linezolid or intravenous methylene blue. All reports with methylene blue that provided information on the route of administration involved intravenous administration in the dose range of 1mg/kg to 8 mg/kg. No reports involved the administration of methylene blue by other routes (such as oral tablets or local tissue injection) or at lower doses. There may be circumstances when it is necessary to initiate treatment with an MAOI such as linezolid or intravenous methylene blue in a patient taking fluoxetine. Fluoxetine should be discontinued before initiating treatment with the MAOI [see *Contraindications (4.1) and Dosage and Administration (2.9, 2.10)*].

If concomitant use of fluoxetine with other serotonergic drugs, i.e., triptans, tricyclic antidepressants, fentanyl, lithium, tramadol, buspirone, tryptophan and St. John's Wort is clinically warranted, patients should be made aware of a potential increased risk for serotonin syndrome, particularly during treatment initiation and dose increases.

Treatment with fluoxetine and any concomitant serotonergic agents, should be discontinued immediately if the above events occur and supportive symptomatic treatment should be initiated.

## **5.3. Allergic Reactions and Rash**

In US fluoxetine clinical trials 7% of 10,782 patients developed various types of rashes and/or urticaria. Among the cases of rash and/or urticaria reported in premarketing clinical trials, almost a third were withdrawn from treatment because of the rash and/or systemic signs or symptoms associated with the rash. Clinical findings reported in association with rash include fever, leukocytosis, arthralgias, edema, carpal tunnel syndrome, respiratory distress, lymphadenopathy, proteinuria, and mild transaminase elevation. Most patients improved promptly with discontinuation of fluoxetine and/or adjunctive treatment with antihistamines or steroids, and all patients experiencing these reactions were reported to recover completely.

In premarketing clinical trials, 2 patients are known to have developed a serious cutaneous systemic illness. In neither patient was there an unequivocal diagnosis, but one was considered to have a leukocytoclastic vasculitis, and the other, a severe desquamating syndrome that was considered variously to be a vasculitis or erythema multiforme. Other patients have had systemic syndromes suggestive of serum sickness.

Since the introduction of fluoxetine, systemic reactions, possibly related to vasculitis and including lupus-like syndrome, have developed in patients with rash. Although these reactions are rare, they may be serious, involving the lung, kidney, or liver. Death has been reported to occur in association with these systemic reactions.

Anaphylactoid reactions, including bronchospasm, angioedema, laryngospasm, and urticaria alone and in combination, have been reported.

Pulmonary reactions, including inflammatory processes of varying histopathology and/or fibrosis, have been reported rarely. These reactions have occurred with dyspnea as the only preceding symptom.

Whether these systemic reactions and rash have a common underlying cause or are due to different etiologies or pathogenic processes is not known. Furthermore, a specific underlying immunologic basis for these reactions has not been identified. Upon the appearance of rash or of other possibly allergic phenomena for which an alternative etiology cannot be identified, fluoxetine should be discontinued.

#### **5.4. Screening Patients for Bipolar Disorder and Monitoring for Mania/Hypomania**

A major depressive episode may be the initial presentation of Bipolar Disorder. It is generally believed (though not established in controlled trials) that treating such an episode with an antidepressant alone may increase the likelihood of precipitation of a mixed/manic episode in patients at risk for Bipolar Disorder. Whether any of the symptoms described for clinical worsening and suicide risk represent such a conversion is unknown. However, prior to initiating treatment with an antidepressant, patients with depressive symptoms should be adequately screened to determine if they are at risk for Bipolar Disorder; such screening should include a detailed psychiatric history, including a family history of suicide, Bipolar Disorder, and depression. It should be noted that fluoxetine and olanzapine in combination is approved for the acute treatment of depressive episodes associated with Bipolar I Disorder [see *Warnings and Precautions section of the package insert for olanzapine and fluoxetine hydrochloride capsules*]. Fluoxetine monotherapy is not indicated for the treatment of depressive episodes associated with Bipolar I Disorder.

In US placebo-controlled clinical trials for Major Depressive Disorder, mania/hypomania was reported in 0.1% of patients treated with fluoxetine and 0.1% of patients treated with placebo. Activation of mania/hypomania has also been reported in a small proportion of patients with Major Affective Disorder treated with other marketed drugs effective in the treatment of Major Depressive Disorder [see *Use in Specific Populations (8.4)*].

In US placebo-controlled clinical trials for OCD, mania/hypomania was reported in 0.8% of patients treated with fluoxetine and no patients treated with placebo. No patients reported mania/hypomania in US placebo-controlled clinical trials for bulimia. In US fluoxetine clinical trials 0.7% of 10,782 patients reported mania/hypomania [see *Use in Specific Populations (8.4)*].

#### **5.5. Seizures**

In US placebo-controlled clinical trials for Major Depressive Disorder, convulsions (or reactions described as possibly having been seizures) were reported in 0.1% of patients treated with fluoxetine and 0.2% of patients treated with placebo. No patients reported convulsions in US placebo-controlled clinical trials for either OCD or bulimia. In US fluoxetine clinical trials 0.2% of 10,782 patients reported convulsions. The percentage appears to be similar to that associated with other marketed drugs effective in the treatment of Major Depressive Disorder. Fluoxetine should be introduced with care in patients with a history of seizures.

#### **5.6. Altered Appetite and Weight**

Significant weight loss, especially in under weight depressed or bulimic patients, may be an undesirable result of treatment with fluoxetine.

In US placebo-controlled clinical trials for Major Depressive Disorder, 11% of patients treated with fluoxetine and 2% of patients treated with placebo reported anorexia (decreased appetite). Weight loss was reported in 1.4% of patients treated with fluoxetine and in 0.5% of patients treated with placebo. However, only rarely have patients discontinued treatment with fluoxetine because of anorexia or weight loss [see *Use in Specific Populations (8.4)*].

In US placebo-controlled clinical trials for OCD, 17% of patients treated with fluoxetine and 10% of patients treated with placebo reported anorexia (decreased appetite). One patient discontinued treatment with fluoxetine because of anorexia [see *Use in Specific Populations* (8.4)].

In US placebo-controlled clinical trials for Bulimia Nervosa, 8% of patients treated with fluoxetine 60 mg and 4% of patients treated with placebo reported anorexia (decreased appetite). Patients treated with fluoxetine 60 mg on average lost 0.45 kg compared with a gain of 0.16 kg by patients treated with placebo in the 16-week double-blind trial. Weight change should be monitored during therapy.

### **5.7. Abnormal Bleeding**

SNRIs and SSRIs, including fluoxetine, may increase the risk of bleeding reactions. Concomitant use of aspirin, nonsteroidal anti-inflammatory drugs, warfarin, and other anti-coagulants may add to this risk. Case reports and epidemiological studies (case-control and cohort design) have demonstrated an association between use of drugs that interfere with serotonin reuptake and the occurrence of gastrointestinal bleeding. Bleeding reactions related to SNRIs and SSRIs use have ranged from ecchymoses, hematomas, epistaxis, and petechiae to life-threatening hemorrhages.

Patients should be cautioned about the risk of bleeding associated with the concomitant use of fluoxetine and NSAIDs, aspirin, warfarin, or other drugs that affect coagulation [see *Drug Interactions* (7.4)].

### **5.8 Angle-Closure Glaucoma**

*Angle-Closure Glaucoma* — The pupillary dilation that occurs following use of many antidepressant drugs including fluoxetine may trigger an angle closure attack in a patient with anatomically narrow angles who does not have a patent iridectomy.

### **5.9. Hyponatremia**

Hyponatremia has been reported during treatment with SNRIs and SSRIs, including fluoxetine. In many cases, this hyponatremia appears to be the result of the syndrome of inappropriate antidiuretic hormone secretion (SIADH). Cases with serum sodium lower than 110 mmol/L have been reported and appeared to be reversible when fluoxetine was discontinued. Elderly patients may be at greater risk of developing hyponatremia with SNRIs and SSRIs. Also, patients taking diuretics or who are otherwise volume depleted may be at greater risk [see *Use in Specific Populations* (8.5)]. Discontinuation of fluoxetine should be considered in patients with symptomatic hyponatremia and appropriate medical intervention should be instituted.

Signs and symptoms of hyponatremia include headache, difficulty concentrating, memory impairment, confusion, weakness, and unsteadiness, which may lead to falls. More severe and / or acute cases have been associated with hallucination, syncope, seizure, coma, respiratory arrest, and death.

### **5.10. Anxiety and Insomnia**

In US placebo-controlled clinical trials for Major Depressive Disorder, 12% to 16% of patients treated with fluoxetine and 7% to 9% of patients treated with placebo reported anxiety, nervousness, or insomnia.

In US placebo-controlled clinical trials for OCD, insomnia was reported in 28% of patients treated with fluoxetine and in 22% of patients treated with placebo. Anxiety was reported in 14% of patients treated with fluoxetine and in 7% of patients treated with placebo.

In US placebo-controlled clinical trials for Bulimia Nervosa, insomnia was reported in 33% of patients treated with fluoxetine 60 mg, and 13% of patients treated with placebo. Anxiety and nervousness were reported, respectively, in 15% and 11% of patients treated with fluoxetine 60 mg and in 9% and 5% of patients treated with placebo.

Among the most common adverse reactions associated with discontinuation (incidence at least twice that for placebo and at least 1% for fluoxetine in clinical trials collecting only a primary reaction associated with discontinuation) in US placebo-controlled fluoxetine clinical trials were anxiety (2% in OCD), insomnia (1% in combined indications and 2% in bulimia), and nervousness (1% in Major Depressive Disorder) [see *Table 5*].

### 5.11. QT Prolongation

Post-marketing cases of QT interval prolongation and ventricular arrhythmia including Torsades de Pointes have been reported in patients treated with fluoxetine. Fluoxetine should be used with caution in patients with congenital long QT syndrome; a previous history of QT prolongation; a family history of long QT syndrome or sudden cardiac death; and other conditions that predispose to QT prolongation and ventricular arrhythmia. Such conditions include concomitant use of drugs that prolong the QT interval; hypokalemia or hypomagnesemia; recent myocardial infarction, uncompensated heart failure, bradyarrhythmias, and other significant arrhythmias; and conditions that predispose to increased fluoxetine exposure (overdose, hepatic impairment, use of CYP2D6 inhibitors, CYP2D6 poor metabolizer status, or use of other highly protein-bound drugs). Fluoxetine is primarily metabolized by CYP2D6 [see *Contraindications (4.2)*, *Drug Interactions (7.7, 7.8)*, *Overdose (10.1)*, and *Clinical Pharmacology (12.3)*].

Pimozide and thioridazine are contraindicated for use with fluoxetine. Avoid the concomitant use of drugs known to prolong the QT interval. These include specific antipsychotics (e.g., ziprasidone, iloperidone, chlorpromazine, mesoridazine, droperidol,); specific antibiotics (e.g., erythromycin, gatifloxacin, moxifloxacin, sparfloxacin); Class 1A antiarrhythmic medications (e.g., quinidine, procainamide); Class III antiarrhythmics (e.g., amiodarone, sotalol); and others (e.g., pentamidine, levomethadyl acetate, methadone, halofantrine, mefloquine, dolasetron mesylate, probucol or tacrolimus) [see *Drug Interactions (7.7, 7.8)* and *Clinical Pharmacology (12.3)*].

Consider ECG assessment and periodic ECG monitoring if initiating treatment with fluoxetine in patients with risk factors for QT prolongation and ventricular arrhythmia. Consider discontinuing fluoxetine and obtaining a cardiac evaluation if patients develop signs or symptoms consistent with ventricular arrhythmia.

### 5.12. Use in Patients with Concomitant Illness

Clinical experience with fluoxetine in patients with concomitant systemic illness is limited. Caution is advisable in using fluoxetine in patients with diseases or conditions that could affect metabolism or hemodynamic responses.

*Cardiovascular* – Fluoxetine has not been evaluated or used to any appreciable extent in patients with a recent history of myocardial infarction or unstable heart disease. Patients with these diagnoses were systematically excluded from clinical studies during the product's premarket testing. However, the electrocardiograms of 312 patients who received fluoxetine in double-blind trials were retrospectively evaluated; no conduction abnormalities that resulted in heart block were observed. The mean heart rate was reduced by approximately 3 beats/min.

*Glycemic Control* – In patients with diabetes, fluoxetine may alter glycemic control. Hypoglycemia has occurred during therapy with fluoxetine, and hyperglycemia has developed following discontinuation of the drug. As is true with many other types of medication when taken concurrently by patients with diabetes, insulin and/or oral hypoglycemic, dosage may need to be adjusted when therapy with fluoxetine is instituted or discontinued.

### 5.13. Potential for Cognitive and Motor Impairment

As with any CNS-active drug, fluoxetine has the potential to impair judgment, thinking, or motor skills. Patients should be cautioned about operating hazardous machinery, including automobiles, until they are reasonably certain that the drug treatment does not affect them adversely.

### 5.14. Long Elimination Half-Life

Because of the long elimination half-lives of the parent drug and its major active metabolite, changes in dose will not be fully reflected in plasma for several weeks, affecting both strategies for titration to final dose and withdrawal from treatment. This is of potential consequence when drug discontinuation is required or when drugs are prescribed that might interact with fluoxetine and norfluoxetine following the discontinuation of fluoxetine [see *Clinical Pharmacology (12.3)*].

## 5.15. Discontinuation of Adverse Reactions

During marketing of fluoxetine, SNRIs and SSRIs, there have been spontaneous reports of adverse reactions occurring upon discontinuation of these drugs, particularly when abrupt, including the following: dysphoric mood, irritability, agitation, dizziness, sensory disturbances (e.g., paresthesias such as electric shock sensations), anxiety, confusion, headache, lethargy, emotional lability, insomnia, and hypomania. While these reactions are generally self-limiting, there have been reports of serious discontinuation symptoms. Patients should be monitored for these symptoms when discontinuing treatment with fluoxetine. A gradual reduction in the dose rather than abrupt cessation is recommended whenever possible. If intolerable symptoms occur following a decrease in the dose or upon discontinuation of treatment, then resuming the previously prescribed dose may be considered. Subsequently, the physician may continue decreasing the dose but at a more gradual rate. Plasma fluoxetine and norfluoxetine concentration decrease gradually at the conclusion of therapy, which may minimize the risk of discontinuation symptoms with this drug.

## 5.16 Fluoxetine and Olanzapine in Combination

When using fluoxetine and olanzapine in combination, also refer to the Warnings and Precautions section of the package insert for olanzapine and fluoxetine hydrochloride capsules.

## 6. ADVERSE REACTIONS

The following adverse reactions are discussed in more detail in other sections of the labeling:

- Suicidal Thoughts and Behaviors in Children, Adolescents, and Young Adults [see *Boxed Warning and Warnings and Precautions (5.1)*]
  - Serotonin Syndrome [see *Warnings and Precautions (5.2)*]
  - Allergic Reactions and Rash [see *Warnings and Precautions (5.3)*]
  - Screening Patients for Bipolar Disorder and Monitoring for Mania/Hypomania [see *Warnings and Precautions (5.4)*]
  - Seizures [see *Warnings and Precautions (5.5)*]
  - Altered Appetite and Weight [see *Warnings and Precautions (5.6)*]
  - Abnormal Bleeding [see *Warnings and Precautions (5.7)*]
  - Angle-Closure Glaucoma [see *Warnings and Precautions (5.8)*]
  - Hyponatremia [see *Warnings and Precautions (5.9)*]
  - Anxiety and Insomnia [see *Warnings and Precautions (5.10)*]
  - QT Prolongation [see *Warnings and Precautions (5.11)*]
  - Potential for Cognitive and Motor Impairment [see *Warnings and Precautions (5.13)*]
  - Discontinuation Adverse Reactions [see *Warnings and Precautions (5.15)*]
- When using fluoxetine and olanzapine in combination, also refer to the Adverse Reactions section of the package insert for olanzapine and fluoxetine hydrochloride capsules.

### 6.1. Clinical Trials Experience

Because clinical trials are conducted under widely varying conditions, adverse reaction rates observed in the clinical trials of a drug cannot be directly compared to rates in the clinical trials of another drug and may not reflect or predict the rates observed in practice.

Multiple doses of fluoxetine have been administered to 10,782 patients with various diagnoses in US clinical trials. In addition, there have been 425 patients administered fluoxetine in panic clinical trials. The stated frequencies represent the proportion of individuals who experienced, at least once, a treatment-emergent adverse reaction of the type listed. A reaction was considered treatment-emergent if it occurred for the first time or worsened while receiving therapy following baseline evaluation.

*Incidence in Major Depressive Disorder, OCD, bulimia, and Panic Disorder placebo-controlled clinical trials (excluding data from extensions of trials)*– Table 3 enumerates the most common treatment-emergent adverse reactions associated with the use of fluoxetine (incidence of at least 5% for fluoxetine and at least twice that for placebo within at least 1 of the indications) for the treatment of Major Depressive Disorder, OCD, and bulimia in US controlled clinical trials and Panic Disorder in US plus non-US controlled trials. Table 5 enumerates treatment-emergent adverse reactions that occurred in 2% or more patients treated with fluoxetine and with incidence greater than placebo who participated in US Major Depressive Disorder, OCD, and bulimia controlled clinical trials

and US plus non-US Panic Disorder controlled clinical trials. Table 4 provides combined data for the pool of studies that are provided separately by indication in Table 3.

**Table 3: Most Common Treatment-Emergent Adverse Reactions: Incidence in Major Depressive Disorder, OCD, Bulimia, and Panic Disorder Placebo-Controlled Clinical Trials<sup>1,2</sup>**

Body System/ Adverse Reaction	Percentage of Patients Reporting Event							
	Major Depressive Disorder		OCD		Bulimia		Panic Disorder	
	Fluoxetine(N=1728)	Placebo (N=975)	Fluoxetine(N=266)	Placebo (N=89)	Fluoxetine(N=450)	Placebo (N=267)	Fluoxetine(N=425)	Placebo (N=342)
<b>Body as a Whole</b>								
Asthenia	9	5	15	11	21	9	7	7
Flu syndrome	3	4	10	7	8	3	5	5
<b>Cardiovascular System</b>								
Vasodilatation	3	2	5	-	2	1	1	-
<b>Digestive System</b>								
Nausea	21	9	26	13	29	11	12	7
Diarrhea	12	8	18	13	8	6	9	4
Anorexia	11	2	17	10	8	4	4	1
Dry mouth	10	7	12	3	9	6	4	4
Dyspepsia	7	5	10	4	10	6	6	2
<b>Nervous System</b>								
Insomnia	16	9	28	22	33	13	10	7
Anxiety	12	7	14	7	15	9	6	2
Nervousness	14	9	14	15	11	5	8	6
Somnolence	13	6	17	7	13	5	5	2
Tremor	10	3	9	1	13	1	3	1
Libido decreased	3	-	11	2	5	1	1	2
Abnormal dreams	1	1	5	2	5	3	1	1
<b>Respiratory System</b>								
Pharyngitis	3	3	11	9	10	5	3	3
Sinusitis	1	4	5	2	6	4	2	3
Yawn	-	-	7	-	11	-	1	-
<b>Skin and Appendages</b>								
Sweating	8	3	7	-	8	3	2	2
Rash	4	3	6	3	4	4	2	2
<b>Urogenital System</b>								
Impotence <sup>3</sup>	2	-	-	-	7	-	1	-
Abnormal ejaculation <sup>3</sup>	-	-	7	-	7	-	2	1

<sup>1</sup> Incidence less than 1%.

<sup>2</sup> Includes US data for Major Depressive Disorder, OCD, bulimia, and Panic Disorder clinical trials, plus non-US data for Panic Disorder clinical trials.

<sup>3</sup> Denominator used was for males only (N=690 Fluoxetine Major Depressive Disorder; N=410 placebo Major Depressive Disorder; N=116 Fluoxetine OCD; N=43 placebo OCD; N=14 Fluoxetine bulimia; N=1 placebo bulimia; N=162 Fluoxetine panic; N=121 placebo panic).

**Table 4: Treatment-Emergent Adverse Reactions: Incidence in Major Depressive Disorder, OCD, Bulimia, and Panic Disorder Placebo-Controlled Clinical Trials<sup>1, 2</sup>**

	<b>Percentage of Patients Reporting Event Major Depressive Disorder, OCD, Bulimia, and Panic Disorder Combined</b>	
<b>Body System /Adverse Reaction</b>	Fluoxetine (N=2869)	Placebo (N=1673)
<b>Body as a Whole</b>		
Headache	21	19
Asthenia	11	6
Flu syndrome	5	4
Fever	2	1
<b>Cardiovascular System</b>		
Vasodilatation	2	1
<b>Digestive System</b>		
Nausea	22	9
Diarrhea	11	7
Anorexia	10	3
Dry mouth	9	6
Dyspepsia	8	4
Constipation	5	4
Flatulence	3	2
Vomiting	3	2
<b>Metabolic and Nutritional Disorders</b>		
Weight loss	2	1
<b>Nervous System</b>		
Insomnia	19	10
Nervousness	13	8
Anxiety	12	6
Somnolence	12	5
Dizziness	9	6
Tremor	9	2
Libido decreased	4	1
Thinking abnormal	2	1
<b>Respiratory System</b>		
Yawn	3	-
<b>Skin and Appendages</b>		
Sweating	7	3
Rash	4	3
Pruritus	3	2
<b>Special Senses</b>		
Abnormal vision	2	1

<sup>1</sup>Incidence less than 1%.

<sup>2</sup> Includes US data for Major Depressive Disorder, OCD, bulimia, and Panic Disorder clinical trials, plus non-US data for Panic Disorder clinical trials.

*Associated with discontinuation in Major Depressive Disorder, OCD, bulimia, and Panic Disorder placebo-controlled clinical trials (excluding data from extensions of trials) - Table 5 lists the adverse reactions associated with discontinuation of fluoxetine treatment (incidence at least twice that for placebo and at least 1% for fluoxetine in clinical trials collecting only a primary reaction associated with discontinuation) in Major Depressive Disorder, OCD, bulimia, and Panic Disorder clinical trials, plus non-US Panic Disorder clinical trials.*

**Table 5: Most Common Adverse Reactions Associated with Discontinuation in Major Depressive Disorder, OCD, Bulimia, and Panic Disorder Placebo-Controlled Clinical Trials<sup>1</sup>**



Major Depressive Disorder, OCD, Bulimia and Panic Disorder Combined (N = 1533)	Major Depressive Disorder (N = 392)	OCD (N = 266)	Bulimia (N = 450)	Panic Disorder (N = 425)
Anxiety (1%)	-	Anxiety (2%)	-	Anxiety (2%)
-	-	-	Insomnia (2%)	-
-	Nervousness (1%)	-	-	Nervousness (1%)
-	-	Rash (1%)	-	-

<sup>1</sup> Includes US Major Depressive Disorder, OCD, Bulimia, and Panic Disorder clinical trials, plus non-US Panic Disorder clinical trials.

*Other adverse reactions in pediatric patients (children and adolescents)* – Treatment-emergent adverse reactions were collected in 322 pediatric patients (180 fluoxetine-treated, 142 placebo-treated). The overall profile of adverse reactions was generally similar to that seen in adult studies, as shown in Tables 4 and 5. However, the following adverse reactions (excluding those which appear in the body or footnotes of Tables 4 and 5 and those for which the COSTART terms were uninformative or misleading) were reported at an incidence of at least 2% for fluoxetine and greater than placebo: thirst, hyperkinesia, agitation, personality disorder, epistaxis, urinary frequency, and menorrhagia.

The most common adverse reaction (incidence at least 1% for fluoxetine and greater than placebo) associated with discontinuation in 3 pediatric placebo-controlled trials (N=418 randomized; 228 fluoxetine-treated; 190 placebo-treated) was mania/hypomania (1.8% for fluoxetine-treated, 0% for placebo-treated). In these clinical trials, only a primary reaction associated with discontinuation was collected.

*Male and female sexual dysfunction with SSRIs* - Although changes in sexual desire, sexual performance, and sexual satisfaction often occur as manifestations of a psychiatric disorder, they may also be a consequence of pharmacologic treatment. In particular, some evidence suggests that SSRIs can cause such untoward sexual experiences. Reliable estimates of the incidence and severity of untoward experiences involving sexual desire, performance, and satisfaction are difficult to obtain, however, in part because patients and physicians may be reluctant to discuss them. Accordingly, estimates of the incidence of untoward sexual experience and performance, cited in product labeling, are likely to underestimate their actual incidence. In patients enrolled in US Major Depressive Disorder, OCD, and bulimia placebo-controlled clinical trials, decreased libido was the only sexual side effect reported by at least 2% of patients taking fluoxetine (4% fluoxetine, <1% placebo). There have been spontaneous reports in women taking fluoxetine of orgasmic dysfunction, including anorgasmia.

There are no adequate and well-controlled studies examining sexual dysfunction with fluoxetine treatment.

Symptoms of sexual dysfunction occasionally persist after discontinuation of fluoxetine treatment.

Priapism has been reported with all SSRIs.

While it is difficult to know the precise risk of sexual dysfunction associated with the use of SSRIs, physicians should routinely inquire about such possible side effects.

## 6.2. Other Reactions

Following is a list of treatment-emergent adverse reactions reported by patients treated with fluoxetine in clinical trials. This listing is not intended to include reactions (1) already listed in previous tables or elsewhere in labeling, (2) for which a drug cause was remote, (3) which were so general as to be uninformative, (4) which were not considered to have significant clinical implications, or (5) which occurred at a rate equal to or less than placebo.

Reactions are classified by body system using the following definitions: frequent adverse reactions are those occurring in at least 1/100 patients; infrequent adverse reactions are those occurring in 1/100 to 1/1000 patients; rare reactions are those occurring in fewer than 1/1000 patients.

**Body as a Whole** -*Frequent*: chills; *Infrequent*: suicide attempt; *Rare*: acute abdominal syndrome, photosensitivity reaction. **Cardiovascular System** - *Frequent*: palpitation; *Infrequent*: arrhythmia, hypotension<sup>1</sup>.

**Digestive System** -*Infrequent*: dysphagia, gastritis, gastroenteritis, melena, stomach ulcer; *Rare*: bloody diarrhea, duodenal ulcer, esophageal ulcer, gastrointestinal hemorrhage, hematemesis, hepatitis, peptic ulcer, stomach ulcer hemorrhage.

**Hemic and Lymphatic System** -*Infrequent*: ecchymosis; *Rare*: petechia, purpura.

**Nervous System** - *Frequent*: emotional lability; *Infrequent*: akathisia, ataxia, balance disorder<sup>1</sup>, bruxism<sup>1</sup>, buccoglossal syndrome, depersonalization, euphoria, hypertonia, libido increased, myoclonus, paranoid reaction; *Rare*: delusions.

**Respiratory System** - *Rare*: larynx edema.

**Skin and Appendages** -*Infrequent*: alopecia; *Rare*: purpuric rash.

**Special Senses** -*Frequent*: taste perversion; *Infrequent*: mydriasis.

**Urogenital System** -*Frequent*: micturition disorder; *Infrequent*: dysuria, gynecological bleeding<sup>2</sup>.

<sup>1</sup> MedDRA dictionary term from integrated database of placebo controlled trials of 15870 patients, of which 9673 patients received fluoxetine.

<sup>2</sup> Group term that includes individual MedDRA terms: cervix hemorrhage uterine, dysfunctional uterine bleeding, genital hemorrhage, menometrorrhagia, menorrhagia, metrorrhagia, polymenorrhea, post menopausal hemorrhage, uterine hemorrhage, vaginal hemorrhage. Adjusted for gender.

### 6.3. Postmarketing Experience

The following adverse reactions have been identified during post approval use of fluoxetine. Because these reactions are reported voluntarily from a population of uncertain size, it is difficult to reliably estimate their frequency or evaluate a causal relationship to drug exposure.

Voluntary reports of adverse reactions temporally associated with fluoxetine that have been received since market introduction and that may have no causal relationship with the drug include the following: aplastic anemia, atrial fibrillation<sup>1</sup>, cataract, cerebral vascular accident<sup>1</sup>, cholestatic jaundice, dyskinesia (including, for example, a case of buccal-lingual-masticatory syndrome with involuntary tongue protrusion reported to develop in a 77-year-old female after 5 weeks of fluoxetine therapy and which completely resolved over the next few months following drug discontinuation), eosinophilic pneumonia<sup>1</sup>, epidermal necrolysis, erythema multiforme, erythema nodosum, exfoliative dermatitis, galactorrhea, gynecomastia, heart arrest<sup>1</sup>, hepatic failure/necrosis, hyperprolactinemia, hypoglycemia, immune-related hemolytic anemia, kidney failure, memory impairment, movement disorders developing in patients with risk factors including drugs associated with such reactions and worsening of pre-existing movement disorders, optic neuritis, pancreatitis<sup>1</sup>, pancytopenia, pulmonary embolism, pulmonary hypertension, QT prolongation, Stevens-Johnson syndrome, thrombocytopenia<sup>1</sup>, thrombocytopenic purpura, ventricular tachycardia (including Torsades de Pointes-type arrhythmias), and vaginal bleeding, and violent behaviors<sup>1</sup>.

<sup>1</sup> These terms represent serious adverse events, but do not meet the definition for adverse drug reactions. They are included here because of their seriousness.

## 7. DRUG INTERACTIONS

As with all drugs, the potential for interaction by a variety of mechanisms (e.g., pharmacodynamic, pharmacokinetic drug inhibition or enhancement, etc.) is a possibility.

### 7.1. Monoamine Oxidase Inhibitors (MAOI)

[see Dosage and Administration (2.9, 2.10), Contraindications (4.1), and Warnings and Precautions (5.2)]

### 7.2. CNS Acting Drugs

Caution is advised if the concomitant administration of fluoxetine and such drugs is required. In evaluating individual cases, consideration should be given to using lower initial doses of the concomitantly administered drugs, using conservative titration

schedules, and monitoring of clinical status [see *Clinical Pharmacology* (12.3)].

### 7.3. Serotonergic Drugs

[see *Dosage and Administration* (2.9, 2.10), *Contraindications* (4.1), and *Warnings and Precautions* (5.2)]

### 7.4 Drugs that Interfere with Hemostasis (e.g., NSAIDs, Aspirin, Warfarin)

Serotonin release by platelets plays an important role in hemostasis. Epidemiological studies of the case-control and cohort design that have demonstrated an association between use of psychotropic drugs that interfere with serotonin reuptake and the occurrence of upper gastrointestinal bleeding have also shown that concurrent use of an NSAID or aspirin may potentiate this risk of bleeding. Altered anticoagulant effects, including increased bleeding, have been reported when SNRIs or SSRIs are coadministered with warfarin. Patients receiving warfarin therapy should be carefully monitored when fluoxetine is initiated or discontinued [see *Warnings and Precautions* (5.7)].

### 7.5 Electroconvulsive Therapy (ECT)

There are no clinical studies establishing the benefit of the combined use of ECT and fluoxetine. There have been rare reports of prolonged seizures in patients on fluoxetine receiving ECT treatment.

### 7.6 Potential for Other Drugs to affect fluoxetine

*Drugs Tightly Bound to Plasma Proteins* — Because fluoxetine is tightly bound to plasma proteins, adverse effects may result from displacement of protein-bound fluoxetine by other tightly-bound drugs [see *Clinical Pharmacology* (12.3)].

### 7.7 Potential for fluoxetine to affect Other Drugs

*Pimozide* — Concomitant use in patients taking pimozide is contraindicated. Pimozide can prolong the QT interval. Fluoxetine can increase the level of pimozide through inhibition of CYP2D6. Fluoxetine can also prolong the QT interval.

Clinical studies of pimozide with other antidepressants demonstrate an increase in drug interaction or QT prolongation. While a specific study with pimozide and fluoxetine has not been conducted, the potential for drug interactions or QT prolongation warrants restricting the concurrent use of pimozide and fluoxetine [see *Contraindications* (4.2), *Warnings and Precautions* (5.11), and *Drug Interactions* (7.8)].

*Thioridazine* — Thioridazine should not be administered with fluoxetine or within a minimum of 5 weeks after fluoxetine has been discontinued because of the risk of QT Prolongation [see *Contraindications* (4.2), *Warnings and Precautions* (5.11), and *Drug Interactions* (7.8)].

In a study of 19 healthy male subjects, which included 6 slow and 13 rapid hydroxylators of debrisoquin, a single 25 mg oral dose of thioridazine produced a 2.4-fold higher C<sub>max</sub> and a 4.5-fold higher AUC for thioridazine in the slow hydroxylators compared with the rapid hydroxylators. The rate of debrisoquin hydroxylation is felt to depend on the level of CYP2D6 isozyme activity. Thus, this study suggests that drugs which inhibit CYP2D6, such as certain SSRIs, including fluoxetine, will produce elevated plasma levels of thioridazine.

Thioridazine administration produces a dose-related prolongation of the QT interval, which is associated with serious ventricular arrhythmias, such as Torsades de Pointes-type arrhythmias, and sudden death. This risk is expected to increase with fluoxetine-induced inhibition of thioridazine metabolism.

*Drugs Metabolized by CYP2D6* — Fluoxetine inhibits the activity of CYP2D6, and may make individuals with normal CYP2D6 metabolic activity resemble a poor metabolizer. Coadministration of fluoxetine with other drugs that are metabolized by CYP2D6, including certain antidepressants (e.g., TCAs), antipsychotics (e.g., phenothiazines and most atypicals), and antiarrhythmics (e.g., propafenone, flecainide, and others) should be approached with caution. Therapy with medications that are predominantly metabolized by the CYP2D6 system and that have a relatively narrow therapeutic index (see list below) should be initiated at the low end of the dose range if a patient is receiving fluoxetine concurrently or has taken it in the previous 5 weeks. Thus, his/her dosing requirements resemble those of poor metabolizers. If fluoxetine is added to the treatment regimen of a patient already receiving a drug metabolized by CYP2D6, the need for decreased dose of the original medication should be considered. Drugs with a narrow therapeutic index represent the greatest concern (e.g., flecainide, propafenone, vinblastine, and TCAs). Due to the risk of serious ventricular arrhythmias and sudden death potentially associated with elevated plasma levels of thioridazine, thioridazine

should not be administered with fluoxetine or within a minimum of 5 weeks after fluoxetine has been discontinued [see *Contraindications (4.2)*].

*Tricyclic Antidepressants (TCAs)* — In 2 studies, previously stable plasma levels of imipramine and desipramine have increased greater than 2- to 10-fold when fluoxetine has been administered in combination. This influence may persist for 3 weeks or longer after fluoxetine is discontinued. Thus, the dose of TCAs may need to be reduced and plasma TCA concentrations may need to be monitored temporarily when fluoxetine is coadministered or has been recently discontinued [see *Warnings and Precautions (5.2)* and *Clinical Pharmacology (12.3)*].

*Benzodiazepines* — The half-life of concurrently administered diazepam may be prolonged in some patients [see *Clinical Pharmacology (12.3)*]. Coadministration of alprazolam and fluoxetine has resulted in increased alprazolam plasma concentrations and in further psychomotor performance decrement due to increased alprazolam levels.

*Antipsychotics* — Some clinical data suggests a possible pharmacodynamic and/or pharmacokinetic interaction between SSRIs and antipsychotics. Elevation of blood levels of haloperidol and clozapine has been observed in patients receiving concomitant fluoxetine.

*Anticonvulsants* — Patients on stable doses of phenytoin and carbamazepine have developed elevated plasma anticonvulsant concentrations and clinical anticonvulsant toxicity following initiation of concomitant fluoxetine treatment.

*Lithium* — There have been reports of both increased and decreased lithium levels when lithium was used concomitantly with fluoxetine. Cases of lithium toxicity and increased serotonergic effects have been reported. Lithium levels should be monitored when these drugs are administered concomitantly [see *Warnings and Precautions (5.2)*].

*Drugs Tightly Bound to Plasma Proteins* — Because fluoxetine is tightly bound to plasma proteins, the administration of fluoxetine to a patient taking another drug that is tightly bound to protein (e.g., Coumadin, digitoxin) may cause a shift in plasma concentrations potentially resulting in an adverse effect [see *Clinical Pharmacology (12.3)*].

*Drugs Metabolized by CYP3A4* — In an in vivo interaction study involving coadministration of fluoxetine with single doses of terfenadine (a CYP3A4 substrate), no increase in plasma terfenadine concentrations occurred with concomitant fluoxetine.

Additionally, in vitro studies have shown ketoconazole, a potent inhibitor of CYP3A4 activity, to be at least 100 times more potent than fluoxetine or norfluoxetine as an inhibitor of the metabolism of several substrates for this enzyme, including astemizole, cisapride, and midazolam. These data indicate that fluoxetine's extent of inhibition of CYP3A4 activity is not likely to be of clinical significance.

*Olanzapine*— Fluoxetine (60 mg single dose or 60 mg daily dose for 8 days) causes a small (mean 16%) increase in the maximum concentration of olanzapine and a small (mean 16%) decrease in olanzapine clearance. The magnitude of the impact of this factor is small in comparison to the overall variability between individuals, and therefore dose modification is not routinely recommended.

*When using fluoxetine and olanzapine and in combination, also refer to the Drug Interactions section of the package insert for olanzapine and fluoxetine hydrochloride capsules.*

## **7.8 Drugs that Prolong the QT Interval**

Do not use fluoxetine in combination with thioridazine or pimozide. Use fluoxetine with caution in combination with other drugs that cause QT prolongation. These include: specific antipsychotics (e.g., ziprasidone, iloperidone, chlorpromazine, mesoridazine, droperidol); specific antibiotics (e.g., erythromycin, gatifloxacin, moxifloxacin, sparfloxacin); Class 1A antiarrhythmic medications (e.g., quinidine, procainamide); Class III antiarrhythmics (e.g., amiodarone, sotalol); and others (e.g., pentamidine, levomethadyl acetate, methadone, halofantrine, mefloquine, dolasetron mesylate, probucol or tacrolimus). Fluoxetine is primarily metabolized by CYP2D6. Concomitant treatment with CYP2D6 inhibitors can increase the concentration of fluoxetine. Concomitant use of other highly protein-bound drugs can increase the concentration of fluoxetine [see *Contraindications (4.2)*, *Warnings and Precautions (5.11)*, *Drug Interactions (7.7)*, and *Clinical Pharmacology (12.3)*].

## **8. USE IN SPECIFIC POPULATIONS**

*When using fluoxetine and olanzapine in combination, also refer to the Use in Specific Populations section of the package insert for olanzapine and fluoxetine hydrochloride capsules.*

### **8.1. Pregnancy**

**Pregnancy Category C** – Fluoxetine should be used during pregnancy only if the potential benefit justifies the potential risk to the fetus. All pregnancies have a background risk of birth defects, loss, or other adverse outcome regardless of drug exposure.

**Treatment of Pregnant Women during the First Trimester** - There are no adequate and well -controlled clinical studies on the use of fluoxetine in pregnant women. Results of a number of published epidemiological studies assessing the risk of fluoxetine exposure during the first trimester of pregnancy have demonstrated inconsistent results. More than 10 cohort studies and case-control, studies failed to demonstrate an increased risk for congenital malformations overall. However, one prospective cohort study conducted by the European Network of Teratology Information Services reported an increased risk of cardiovascular malformations in infants born to women (N = 253) exposed to fluoxetine during the first trimester of pregnancy compared to infants of women (N= 1,359) who were not exposed to fluoxetine. There was no specific pattern of cardiovascular malformations. Overall, however, a causal relationship has not been established.

**Nonteratogenic Effects** — Neonates exposed to fluoxetine and other SSRIs or serotonin and norepinephrine reuptake inhibitors (SNRIs), late in the third trimester have developed complications requiring prolonged hospitalization, respiratory support, and tube feeding. Such complications can arise immediately upon delivery. Reported clinical findings have included respiratory distress, cyanosis, apnea, seizures, temperature instability, feeding difficulty, vomiting, hypoglycemia, hypotonia, hypertonia, hyperreflexia, tremor, jitteriness, irritability, and constant crying. These features are consistent with either a direct toxic effect of SSRIs and SNRIs or, possibly, a drug discontinuation syndrome. It should be noted that, in some cases, the clinical picture is consistent with serotonin syndrome [see *Warnings and Precautions (5.2)*].

Infants exposed to SSRIs in pregnancy may have an increased risk for persistent pulmonary hypertension of the newborn (PPHN). PPHN occurs in 1 to 2 per 1,000 live births in the general population and is associated with substantial neonatal morbidity and mortality. Several recent epidemiological studies suggest a positive statistical association between SSRI use (including fluoxetine) in pregnancy and PPHN. Other studies do not show a significant statistical association.

Physicians should also note the results of a prospective longitudinal study of 201 pregnant women with a history of major depression, who were either on antidepressants or had received antidepressants less than 12 weeks prior to their last menstrual period, and were in remission. Women who discontinued antidepressant medication during pregnancy showed a significant increase in relapse of their major depression compared to those women who remained on antidepressant medication throughout pregnancy.

When treating a pregnant woman with fluoxetine, the physician should carefully consider both the potential risks of taking an SSRI, along with the established benefits of treating depression with an antidepressant. The decision can only be made on a case by case basis [see *Dosage and Administration (2.7)*].

**Animal Data** - In embryo-fetal development studies in rats and rabbits, there was no evidence of teratogenicity following administration of fluoxetine at doses up to 12.5 and 15 mg/kg/day, respectively (1.5 and 3.6 times, respectively, the maximum recommended human dose (MRHD) of 80 mg on a mg/m<sup>2</sup>basis) throughout organogenesis. However, in rat reproduction studies, an increase in stillborn pups, a decrease in pup weight, and an increase in pup deaths during the first 7 days postpartum occurred following maternal exposure to 12 mg/kg/day (1.5 times the MRHD on a mg/m<sup>2</sup> basis) during gestation or 7.5 mg/kg/day (0.9 times the MRHD on a mg/m<sup>2</sup>basis) during gestation and lactation. There was no evidence of developmental neurotoxicity in the surviving offspring of rats treated with 12 mg/kg/day during gestation. The no-effect dose for rat pup mortality was 5 mg/kg/day (0.6 times the MRHD on a mg/m<sup>2</sup>basis).

## **8.2. Labor and Delivery**

The effect of fluoxetine on labor and delivery in humans is unknown. However, because fluoxetine crosses the placenta and because of the possibility that fluoxetine may have adverse effects on the newborn, fluoxetine should be used during labor and delivery only if the potential benefit justifies the potential risk to the fetus.

## **8.3. Nursing Mothers**

Because fluoxetine is excreted in human milk, nursing while on fluoxetine is not recommended. In one breast-milk sample, the concentration of fluoxetine plus

norfluoxetine was 70.4 ng/mL. The concentration in the mother's plasma was 295.0 ng/mL. No adverse effects on the infant were reported. In another case, an infant nursed by a mother on fluoxetine developed crying, sleep disturbance, vomiting, and watery stools. The infant's plasma drug levels were 340 ng/mL of fluoxetine and 208 ng/mL of norfluoxetine on the second day of feeding.

#### **8.4. Pediatric Use**

*Use of fluoxetine in children* - The efficacy of fluoxetine for the treatment of Major Depressive Disorder was demonstrated in two 8- to 9-week placebo-controlled clinical trials with 315 pediatric outpatients ages 8 to  $\leq 18$  [see *Clinical Studies (14.1)*].

The efficacy of fluoxetine for the treatment of OCD was demonstrated in one 13-week placebo-controlled clinical trial with 103 pediatric outpatients ages 7 to  $< 18$  [see *Clinical Studies (14.2)*].

The safety and effectiveness in pediatric patients  $< 8$  years of age in Major Depressive Disorder and  $< 7$  years of age in OCD have not been established.

Fluoxetine pharmacokinetics were evaluated in 21 pediatric patients (ages 6 to  $\leq 18$ ) with Major Depressive Disorder or OCD [see *Clinical Pharmacology (12.3)*].

The acute adverse reaction profiles observed in the 3 studies (N=418 randomized; 228 fluoxetine-treated, 190 placebo-treated) were generally similar to that observed in adult studies with fluoxetine. The longer-term adverse reaction profile observed in the 19-week Major Depressive Disorder study (N=219 randomized; 109 fluoxetine-treated, 110 placebo-treated) was also similar to that observed in adult trials with fluoxetine [see *Adverse Reactions (6.1)*].

Manic reaction, including mania and hypomania, was reported in 6 (1 mania, 5 hypomania) out of 228 (2.6%) fluoxetine-treated patients and in 0 out of 190 (0%) placebo-treated patients. Mania/hypomania led to the discontinuation of 4 (1.8%) fluoxetine-treated patients from the acute phases of the 3 studies combined. Consequently, regular monitoring for the occurrence of mania/hypomania is recommended.

As with other SSRIs, decreased weight gain has been observed in association with the use of fluoxetine in children and adolescent patients. After 19 weeks of treatment in a clinical trial, pediatric subjects treated with fluoxetine gained an average of 1.1 cm less in height and 1.1 kg less in weight than subjects treated with placebo. In addition, fluoxetine treatment was associated with a decrease in alkaline phosphatase levels. The safety of fluoxetine treatment for pediatric patients has not been systematically assessed for chronic treatment longer than several months in duration. In particular, there are no studies that directly evaluate the longer-term effects of fluoxetine on the growth, development, and maturation of children and adolescent patients. Therefore, height and weight should be monitored periodically in pediatric patients receiving fluoxetine. [see *Warnings and Precautions (5.6)*].

Fluoxetine is approved for use in pediatric patients with MDD and OCD [see *Box Warning and Warnings and Precautions (5.1)*]. Anyone considering the use of fluoxetine in a child or adolescent must balance the potential risks with the clinical need.

#### Animal Data

Significant toxicity on muscle tissue, neurobehavior, reproductive organs, and bone development has been observed following exposure of juvenile rats to fluoxetine from weaning through maturity. Oral administration of fluoxetine to rats from weaning postnatal day 21 through adulthood day 90 at 3, 10, or 30 mg/kg/day was associated with testicular degeneration and necrosis, epididymal vacuolation and hypospermia (at 30 mg/kg/day corresponding to plasma exposures [AUC] approximately 5 to 10 times the average AUC in pediatric patients at the MRHD of 20 mg/day), increased serum levels of creatine kinase (at AUC as low as 1 to 2 times the average AUC in pediatric patients at the MRHD of 20 mg/day), skeletal muscle degeneration and necrosis, decreased femur length/growth and body weight gain (at AUC 5 to 10 times the average AUC in pediatric patients at the MRHD of 20 mg/day). The high dose of 30 mg/kg/day exceeded a maximum tolerated dose. When animals were evaluated after a drug-free period (up to 11 weeks after cessation of dosing), fluoxetine was associated with neurobehavioral abnormalities (decreased reactivity at AUC as low as approximately 0.1 to 0.2 times the average AUC in pediatric patients at the MRHD and learning deficit at the high dose), and reproductive functional impairment (decreased mating at all doses and impaired fertility at the high dose). In addition, the testicular and epididymal microscopic lesions and decreased sperm concentrations found in high dose group were also observed, indicating that the drug effects on reproductive organs are irreversible. The reversibility of fluoxetine-induced muscle damage was not assessed. These fluoxetine toxicities in juvenile rats have not been observed in adult animals.

Plasma exposures (AUC) to fluoxetine in juvenile rats receiving 3, 10, or 30 mg/kg/day doses in this study are approximately 0.1 to 0.2, 1 to 2, and 5 to 10 times, respectively, the average exposure in pediatric patients receiving the MRHD of 20 mg/day. Rat exposures to the major metabolite, norfluoxetine, are approximately 0.3 to 0.8, 1 to 8, and 3 to 20 times, respectively, the pediatric exposure at the MRHD.

A specific effect on bone development was reported in juvenile mice administered fluoxetine by the intraperitoneal route to 4 week old mice for 4 weeks at doses 0.5 and 2 times the oral MRHD of 20 mg/day on mg/m<sup>2</sup> basis. There was a decrease in bone mineralization and density at both doses, but the overall growth (body weight gain or femur length) was not affected.

Safety and effectiveness of fluoxetine and olanzapine in combination in patients less than 18 years of age have not been established.

Information for pediatric patients (10 to 17 years) is approved for Eli Lilly and Company's Fluoxetine Capsules. However due to Eli Lilly and Company's marketing exclusivity rights, this drug product is not labeled with that pediatric information.

## **8.5. Geriatric Use**

US fluoxetine clinical trials included 687 patients ≥65 years of age and 93 patients ≥75 years of age. The efficacy in geriatric patients has been established [see *Clinical Studies (14.1)*]. For pharmacokinetic information in geriatric patients, [see *Clinical Pharmacology (12.4)*]. No overall differences in safety or effectiveness were observed between these subjects and younger subjects, and other reported clinical experience has not identified differences in responses between the elderly and younger patients, but greater sensitivity of some older individuals cannot be ruled out. SNRIs and SSRIs, including fluoxetine, have been associated with cases of clinically significant hyponatremia in elderly patients, who may be at greater risk for this adverse reaction [see *Warnings and Precautions (5.9)*].

Clinical studies of olanzapine and fluoxetine in combination did not include sufficient numbers of patients ≥65 years of age to determine whether they respond differently from younger patients.

## **8.6. Hepatic Impairment**

In subjects with cirrhosis of the liver, the clearances of fluoxetine and its active metabolite, norfluoxetine, were decreased, thus increasing the elimination half-lives of these substances. A lower or less frequent dose of fluoxetine should be used in patients with cirrhosis. Caution is advised when using fluoxetine in patients with diseases or conditions that could affect its metabolism [see *Dosage and Administration (2.7)* and *Clinical Pharmacology (12.4)*].

## **9. DRUG ABUSE AND DEPENDENCE**

### **9.3 Dependence**

Fluoxetine has not been systematically studied, in animals or humans, for its potential for abuse, tolerance, or physical dependence. While the premarketing clinical experience with fluoxetine did not reveal any tendency for a withdrawal syndrome or any drug seeking behavior, these observations were not systematic and it is not possible to predict on the basis of this limited experience the extent to which a CNS active drug will be misused, diverted, and/or abused once marketed. Consequently, physicians should carefully evaluate patients for history of drug abuse and follow such patients closely, observing them for signs of misuse or abuse of fluoxetine (e.g., development of tolerance, incrementation of dose, drug-seeking behavior).

## **10. OVERDOSAGE**

### **10.1. Human Experience**

Worldwide exposure to fluoxetine hydrochloride is estimated to be over 38 million patients (circa 1999). Of the 1578 cases of overdose involving fluoxetine hydrochloride, alone or with other drugs, reported from this population, there were 195 deaths. Among 633 adult patients who overdosed on fluoxetine hydrochloride alone, 34 resulted in a fatal outcome, 378 completely recovered, and 15 patients experienced sequelae after overdosage, including abnormal accommodation, abnormal gait, confusion, unresponsiveness, nervousness, pulmonary dysfunction, vertigo, tremor, elevated blood pressure, impotence, movement disorder, and hypomania. The remaining 206

patients had an unknown outcome. The most common signs and symptoms associated with non-fatal overdose were seizures, somnolence, nausea, tachycardia, and vomiting. The largest known ingestion of fluoxetine hydrochloride in adult patients was 8 grams in a patient who took fluoxetine alone and who subsequently recovered. However, in an adult patient who took fluoxetine alone, an ingestion as low as 520 mg has been associated with lethal outcome, but causality has not been established. Among pediatric patients (ages 3 months to 17 years), there were 156 cases of overdose involving fluoxetine alone or in combination with other drugs. Six patients died, 127 patients completely recovered, 1 patient experienced renal failure, and 22 patients had an unknown outcome. One of the six fatalities was a 9-year-old boy who had a history of OCD, Tourette's syndrome with tics, attention deficit disorder, and fetal alcohol syndrome. He had been receiving 100 mg of fluoxetine daily for 6 months in addition to clonidine, methylphenidate, and promethazine. Mixed-drug ingestion or other methods of suicide complicated all 6 overdoses in children that resulted in fatalities. The largest ingestion in pediatric patients was 3 grams which was nonlethal. Other important adverse reactions reported with fluoxetine overdose (single or multiple drugs) include coma, delirium, ECG abnormalities (such as QT interval prolongation and ventricular arrhythmias, including Torsades de Pointes-type arrhythmias), hypotension, mania, neuroleptic malignant syndrome-like reactions, pyrexia, stupor, and syncope.

## 10.2. Animal Experience

Studies in animals do not provide precise or necessarily valid information about the treatment of human overdose. However, animal experiments can provide useful insights into possible treatment strategies.

The oral median lethal dose in rats and mice was found to be 452 and 248 mg/kg, respectively. Acute high oral doses produced hyperirritability and convulsions in several animal species.

Among 6 dogs purposely overdosed with oral fluoxetine, 5 experienced grand mal seizures. Seizures stopped immediately upon the bolus intravenous administration of a standard veterinary dose of diazepam. In this short-term study, the lowest plasma concentration at which a seizure occurred was only twice the maximum plasma concentration seen in humans taking 80 mg/day, chronically.

In a separate single-dose study, the ECG of dogs given high doses did not reveal prolongation of the PR, QRS, or QT intervals. Tachycardia and an increase in blood pressure were observed. Consequently, the value of the ECG in predicting cardiac toxicity is unknown. Nonetheless, the ECG should ordinarily be monitored in cases of human overdose [see *Overdosage (10.3)*].

## 10.3. Management of Overdose

For current information on the management of fluoxetine overdose, contact a certified poison control center (1-800-222-1222 or [www.poisson.org](http://www.poisson.org)).

Treatment should consist of those general measures employed in the management of overdosage with any drug.

Consider the possibility of multi-drug overdose.

Ensure an adequate airway, oxygenation, and ventilation. Monitor cardiac rhythm and vital signs. Use general supportive and symptomatic measures. Induction of emesis is not recommended.

Activated charcoal should be administered. Due to the large volume of distribution of this drug, forced diuresis, dialysis, hemoperfusion, and exchange transfusion are unlikely to be of benefit. No specific antidotes for fluoxetine are known.

A specific caution involves patients who are taking or have recently taken fluoxetine and might ingest excessive quantities of a TCA. In such a case, accumulation of the parent tricyclic and/or an active metabolite may increase the possibility of clinically significant sequelae and extend the time needed for close medical observation [see *Drug Interactions (7.7)*]

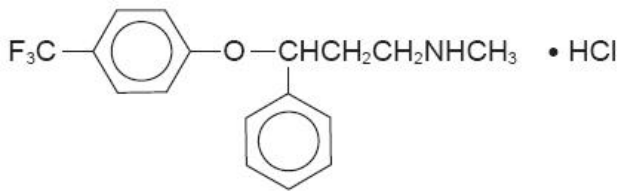
For specific information about overdosage with olanzapine and fluoxetine in combination, refer to the Overdosage section of the olanzapine and fluoxetine hydrochloride capsules package insert.

## 11. DESCRIPTION

Fluoxetine capsules USP is a selective serotonin reuptake inhibitor for oral administration.



It is also marketed for the treatment of premenstrual dysphoric disorder (Sarafem<sup>®</sup>, fluoxetine hydrochloride). It is designated (±)-N-methyl-3-phenyl-3-[(α,α,α-trifluoro-*p*-tolyl)oxy]propylamine hydrochloride and has the empirical formula of C<sub>17</sub>H<sub>18</sub>F<sub>3</sub>NO•HCl. Its molecular weight is 345.79. The structural formula is:



Fluoxetine hydrochloride is a white to off-white crystalline solid with a solubility of 14 mg/mL in water.

Each capsule contains fluoxetine hydrochloride equivalent to 10 mg (32.3 μmol), 20 mg (64.7 μmol), or 40 mg (129.3 μmol) of fluoxetine. The capsules also contain lactose monohydrate, microcrystalline cellulose, colloidal silicone dioxide, gelatin, titanium dioxide, FD & C Blue No. 1 and FD & C Red No. 40.

## 12. CLINICAL PHARMACOLOGY

### 12.1. Mechanism of Action

Although the exact mechanism of fluoxetine is unknown, it is presumed to be linked to its inhibition of CNS neuronal uptake of serotonin

### 12.2. Pharmacodynamics

Studies at clinically relevant doses in man have demonstrated that fluoxetine blocks the uptake of serotonin into human platelets. Studies in animals also suggest that fluoxetine is a much more potent uptake inhibitor of serotonin than of norepinephrine.

Antagonism of muscarinic, histaminergic, and α<sub>1</sub>-adrenergic receptors has been hypothesized to be associated with various anticholinergic, sedative, and cardiovascular effects of classical tricyclic antidepressant (TCA) drugs. Fluoxetine binds to these and other membrane receptors from brain tissue much less potently in vitro than do the tricyclic drugs.

### 12.3 Pharmacokinetics

*Systemic Bioavailability*- In man, following a single oral 40 mg dose, peak plasma concentrations of fluoxetine from 15 to 55 ng/mL are observed after 6 to 8 hours.

Food does not appear to affect the systemic bioavailability of fluoxetine, although it may delay its absorption by 1 to 2 hours, which is probably not clinically significant. Thus, fluoxetine may be administered with or without food.

*Protein Binding*- Over the concentration range from 200 to 1000 ng/mL, approximately 94.5% of fluoxetine is bound in vitro to human serum proteins, including albumin and α<sub>1</sub>-glycoprotein. The interaction between fluoxetine and other highly protein-bound drugs has not been fully evaluated, but may be important.

*Enantiomers*- Fluoxetine is a racemic mixture (50/50) of *R*-fluoxetine and *S*-fluoxetine enantiomers. In animal models, both enantiomers are specific and potent serotonin uptake inhibitors with essentially equivalent pharmacologic activity. The *S*-fluoxetine enantiomer is eliminated more slowly and is the predominant enantiomer present in plasma at steady state.

*Metabolism* - Fluoxetine is extensively metabolized in the liver to norfluoxetine and a number of other unidentified metabolites. The only identified active metabolite, norfluoxetine, is formed by demethylation of fluoxetine. In animal models, *S*-norfluoxetine is a potent and selective inhibitor of serotonin uptake and has activity essentially equivalent to *R*- or *S*-fluoxetine. *R*-norfluoxetine is significantly less potent than the parent drug in the inhibition of serotonin uptake. The primary route of elimination appears to be hepatic metabolism to inactive metabolites excreted by the kidney.

*Variability in Metabolism* - A subset (about 7%) of the population has reduced activity of the drug metabolizing enzyme cytochrome P450 2D6 (CYP2D6). Such individuals are

referred to as “poor metabolizers” of drugs such as debrisoquin, dextromethorphan, and the TCAs. In a study involving labeled and unlabeled enantiomers administered as a racemate, these individuals metabolized *S*-fluoxetine at a slower rate and thus achieved higher concentrations of *S*-fluoxetine. Consequently, concentrations of *S*-norfluoxetine at steady state were lower. The metabolism of *R*-fluoxetine in these poor metabolizers appears normal. When compared with normal metabolizers, the total sum at steady state of the plasma concentrations of the 4 active enantiomers was not significantly greater among poor metabolizers. Thus, the net pharmacodynamic activities were essentially the same. Alternative, nonsaturable pathways (non-2D6) also contribute to the metabolism of fluoxetine. This explains how fluoxetine achieves a steady-state concentration rather than increasing without limit. Because fluoxetine’s metabolism, like that of a number of other compounds including TCAs and other selective serotonin reuptake inhibitors (SSRIs), involves the CYP2D6 system, concomitant therapy with drugs also metabolized by this enzyme system (such as the TCAs) may lead to drug interactions [see *Drug Interactions (7.7)*].

**Accumulation and Slow Elimination** – The relatively slow elimination of fluoxetine (elimination half-life of 1 to 3 days after acute administration and 4 to 6 days after chronic administration) and its active metabolite, norfluoxetine (elimination half-life of 4 to 16 days after acute and chronic administration), leads to significant accumulation of these active species in chronic use and delayed attainment of steady state, even when a fixed dose is used [see *Warnings and Precautions (5.14)*]. After 30 days of dosing at 40 mg/day, plasma concentrations of fluoxetine in the range of 91 to 302 ng/mL and norfluoxetine in the range of 72 to 258 ng/mL have been observed. Plasma concentrations of fluoxetine were higher than those predicted by single-dose studies, because fluoxetine’s metabolism is not proportional to dose. Norfluoxetine, however, appears to have linear pharmacokinetics. Its mean terminal half-life after a single dose was 8.6 days and after multiple dosing was 9.3 days. Steady-state levels after prolonged dosing are similar to levels seen at 4 to 5 weeks. The long elimination half-lives of fluoxetine and norfluoxetine assure that, even when dosing is stopped, active drug substance will persist in the body for weeks (primarily depending on individual patient characteristics, previous dosing regimen, and length of previous therapy at discontinuation). This is of potential consequence when drug discontinuation is required or when drugs are prescribed that might interact with fluoxetine and norfluoxetine following the discontinuation of fluoxetine.

#### **12.4. Specific Populations**

**Liver Disease**– As might be predicted from its primary site of metabolism, liver impairment can affect the elimination of fluoxetine. The elimination half-life of fluoxetine was prolonged in a study of cirrhotic patients, with a mean of 7.6 days compared with the range of 2 to 3 days seen in subjects without liver disease; norfluoxetine elimination was also delayed, with a mean duration of 12 days for cirrhotic patients compared with the range of 7 to 9 days in normal subjects. This suggests that the use of fluoxetine in patients with liver disease must be approached with caution. If fluoxetine is administered to patients with liver disease, a lower or less frequent dose should be used [see *Dosage and Administration (2.7)*, *Use in Specific Populations (8.6)*].

**Renal Disease**– In depressed patients on dialysis (N=12), fluoxetine administered as 20 mg once daily for 2 months produced steady-state fluoxetine and norfluoxetine plasma concentrations comparable with those seen in patients with normal renal function. While the possibility exists that renally excreted metabolites of fluoxetine may accumulate to higher levels in patients with severe renal dysfunction, use of a lower or less frequent dose is not routinely necessary in renally impaired patients.

**Geriatric Pharmacokinetics** – The disposition of single doses of fluoxetine in healthy elderly subjects (>65 years of age) did not differ significantly from that in younger normal subjects. However, given the long half-life and nonlinear disposition of the drug, a single-dose study is not adequate to rule out the possibility of altered pharmacokinetics in the elderly, particularly if they have systemic illness or are receiving multiple drugs for concomitant diseases. The effects of age upon the metabolism of fluoxetine have been investigated in 260 elderly but otherwise healthy depressed patients (≥60 years of age) who received 20 mg fluoxetine for 6 weeks. Combined fluoxetine plus norfluoxetine plasma concentrations were 209.3 ± 85.7 ng/mL at the end of 6 weeks. No unusual age-associated pattern of adverse reactions was observed in those elderly patients.

**Pediatric Pharmacokinetics (children and adolescents)**– Fluoxetine pharmacokinetics were evaluated in 21 pediatric patients (10 children ages 6 to <13, 11 adolescents ages

13 to <18) diagnosed with Major Depressive Disorder or Obsessive Compulsive Disorder (OCD). Fluoxetine 20 mg/day was administered for up to 62 days. The average steady-state concentrations of fluoxetine in these children were 2-fold higher than in adolescents (171 and 86 ng/mL, respectively). The average norfluoxetine steady-state concentrations in these children were 1.5-fold higher than in adolescents (195 and 113 ng/mL, respectively). These differences can be almost entirely explained by differences in weight. No gender-associated difference in fluoxetine pharmacokinetics was observed. Similar ranges of fluoxetine and norfluoxetine plasma concentrations were observed in another study in 94 pediatric patients (ages 8 to <18) diagnosed with Major Depressive Disorder.

Higher average steady-state fluoxetine and norfluoxetine concentrations were observed in children relative to adults; however, these concentrations were within the range of concentrations observed in the adult population. As in adults, fluoxetine and norfluoxetine accumulated extensively following multiple oral dosing; steady-state concentrations were achieved within 3 to 4 weeks of daily dosing.

## 13. NONCLINICAL TOXICOLOGY

### 13.1 Carcinogenesis, Mutagenesis, Impairment of Fertility

*Carcinogenicity* – The dietary administration of fluoxetine to rats and mice for 2 years at doses of up to 10 and 12 mg/kg/day, respectively [approximately 1.2 and 0.7 times, respectively, the maximum recommended human dose (MRHD) of 80 mg on a mg/m<sup>2</sup> basis], produced no evidence of carcinogenicity.

*Mutagenicity* – Fluoxetine and norfluoxetine have been shown to have no genotoxic effects based on the following assays: bacterial mutation assay, DNA repair assay in cultured rat hepatocytes, mouse lymphoma assay, and in vivo sister chromatid exchange assay in Chinese hamster bone marrow cells.

*Impairment of Fertility* – Two fertility studies conducted in adult rats at doses of up to 7.5 and 12.5 mg/kg/day (approximately 0.9 and 1.5 times the MRHD on a mg/m<sup>2</sup> basis) indicated that fluoxetine had no adverse effects on fertility. However, adverse effects on fertility were seen when juvenile rats were treated with fluoxetine [see *Use in Specific Populations* (8.4)].

### 13.2. Animal Toxicology and/or Pharmacology

Phospholipids are increased in some tissues of mice, rats, and dogs given fluoxetine chronically. This effect is reversible after cessation of fluoxetine treatment. Phospholipid accumulation in animals has been observed with many cationic amphiphilic drugs, including fenfluramine, imipramine, and ranitidine. The significance of this effect in humans is unknown.

## 14. CLINICAL STUDIES

Efficacy for fluoxetine was established for the:

- Acute and maintenance treatment of Major Depressive Disorder in adults, and children and adolescents (8 to 18 years) in 7 short-term and 2 long-term, placebo-controlled trials [see *Clinical Studies* 14.1].
- Acute treatment of obsessions and compulsions in adults, and children and adolescents (7 to 17 years) with Obsessive Compulsive Disorder (OCD) in 3 short-term placebo-controlled trials [see *Clinical Studies* (14.2)].
- Acute and maintenance treatment of binge-eating and vomiting behaviors in adult patients with moderate to severe Bulimia Nervosa in 3 short-term and 1 long-term, placebo-controlled trials [see *Clinical Studies* (14.3)].
- Acute treatment of Panic Disorder, with or without agoraphobia, in adult patients in 2 short-term, placebo-controlled trials [see *Clinical Studies* (14.4)].

Efficacy for fluoxetine and olanzapine in combination was established for the:

- Acute treatment of depressive episodes in Bipolar I Disorder in adults.

*When using fluoxetine and olanzapine in combination, also refer to the Clinical Studies section of the package insert for olanzapine and fluoxetine hydrochloride capsules.*

### 14.1. Major Depressive Disorder

### Daily Dosing

*Adult* – The efficacy of fluoxetine was studied in 5- and 6-week placebo-controlled trials with depressed adult and geriatric outpatients ( $\geq 18$  years of age) whose diagnoses corresponded most closely to the DSM-III (currently DSM-IV) category of Major Depressive Disorder. Fluoxetine was shown to be significantly more effective than placebo as measured by the Hamilton Depression Rating Scale (HAM-D). Fluoxetine was also significantly more effective than placebo on the HAM-D subscores for depressed mood, sleep disturbance, and the anxiety subfactor.

Two 6-week controlled studies (N=671, randomized) comparing fluoxetine 20 mg and placebo have shown fluoxetine 20 mg daily to be effective in the treatment of elderly patients ( $\geq 60$  years of age) with Major Depressive Disorder. In these studies, fluoxetine produced a significantly higher rate of response and remission as defined, respectively, by a 50% decrease in the HAM-D score and a total endpoint HAM-D score of  $\leq 8$ . Fluoxetine was well tolerated and the rate of treatment discontinuations due to adverse reactions did not differ between fluoxetine (12%) and placebo (9%).

A study was conducted involving depressed outpatients who had responded (modified HAMD-17 score of  $\leq 7$  during each of the last 3 weeks of open-label treatment and absence of Major Depressive Disorder by DSM-III-R criteria) by the end of an initial 12-week open-treatment phase on fluoxetine 20 mg/day. These patients (N=298) were randomized to continuation on double-blind fluoxetine 20 mg/day or placebo. At 38 weeks (50 weeks total), a statistically significantly lower relapse rate (defined as symptoms sufficient to meet a diagnosis of Major Depressive Disorder for 2 weeks or a modified HAMD-17 score of  $\geq 14$  for 3 weeks) was observed for patients taking fluoxetine compared with those on placebo.

*Pediatric (children and adolescents)* – The efficacy of fluoxetine 20 mg/day in children and adolescents (N=315 randomized; 170 children ages 8 to  $<13$ , 145 adolescents ages 13 to  $\leq 18$ ) has been studied in two 8- to 9-week placebo-controlled clinical trials in depressed outpatients whose diagnoses corresponded most closely to the DSM-III-R or DSM-IV category of Major Depressive Disorder.

In both studies independently, fluoxetine produced a statistically significantly greater mean change on the Childhood Depression Rating Scale-Revised (CDRS-R) total score from baseline to endpoint than did placebo.

Subgroup analyses on the CDRS-R total score did not suggest any differential responsiveness on the basis of age or gender.

## 14.2. Obsessive Compulsive Disorder

*Adult* – The effectiveness of fluoxetine for the treatment of Obsessive Compulsive Disorder (OCD) was demonstrated in two 13-week, multicenter, parallel group studies (Studies 1 and 2) of adult outpatients who received fixed fluoxetine doses of 20, 40, or 60 mg/day (on a once-a-day schedule, in the morning) or placebo. Patients in both studies had moderate to severe OCD (DSM-III-R), with mean baseline ratings on the Yale-Brown Obsessive Compulsive Scale (YBOCS, total score) ranging from 22 to 26. In Study 1, patients receiving fluoxetine experienced mean reductions of approximately 4 to 6 units on the YBOCS total score, compared with a 1-unit reduction for placebo patients. In Study 2, patients receiving fluoxetine experienced mean reductions of approximately 4 to 9 units on the YBOCS total score, compared with a 1-unit reduction for placebo patients. While there was no indication of a dose-response relationship for effectiveness in Study 1, a dose-response relationship was observed in Study 2, with numerically better responses in the 2 higher dose groups. The following table provides the outcome classification by treatment group on the Clinical Global Impression (CGI) improvement scale for Studies 1 and 2 combined:

**Table 6 Outcome Classification (%) on CGI Improvement Scale for Completers in Pool of Two OCD Studies**

Outcome Classification	Fluoxetine			
	Placebo	20 mg	40 mg	60 mg
Worse	8%	0%	0%	0%
No change	64%	41%	33%	29%
Minimally improved	17%	23%	28%	24%

Much improved	8%	28%	27%	28%
Very much improved	3%	8%	12%	19%

Exploratory analyses for age and gender effects on outcome did not suggest any differential responsiveness on the basis of age or sex.

*Pediatric (children and adolescents)* – In one 13-week clinical trial in pediatric patients (N=103 randomized; 75 children ages 7 to <13, 28 adolescents ages 13 to <18) with OCD (DSM-IV), patients received fluoxetine 10 mg/day for 2 weeks, followed by 20 mg/day for 2 weeks. The dose was then adjusted in the range of 20 to 60 mg/day on the basis of clinical response and tolerability. Fluoxetine produced a statistically significantly greater mean change from baseline to endpoint than did placebo as measured by the Children’s Yale-Brown Obsessive Compulsive Scale (CY-BOCS). Subgroup analyses on outcome did not suggest any differential responsiveness on the basis of age or gender.

### **14.3. Bulimia Nervosa**

The effectiveness of fluoxetine for the treatment of bulimia was demonstrated in two 8-week and one 16-week, multicenter, parallel group studies of adult outpatients meeting DSM-III-R criteria for bulimia. Patients in the 8-week studies received either 20 or 60 mg/day of fluoxetine or placebo in the morning. Patients in the 16-week study received a fixed fluoxetine dose of 60 mg/day (once a day) or placebo. Patients in these 3 studies had moderate to severe bulimia with median binge-eating and vomiting frequencies ranging from 7 to 10 per week and 5 to 9 per week, respectively. In these 3 studies, fluoxetine 60 mg, but not 20 mg, was statistically significantly superior to placebo in reducing the number of binge-eating and vomiting episodes per week. The statistically significantly superior effect of 60 mg versus placebo was present as early as Week 1 and persisted throughout each study. The fluoxetine-related reduction in bulimic episodes appeared to be independent of baseline depression as assessed by the Hamilton Depression Rating Scale. In each of these 3 studies, the treatment effect, as measured by differences between fluoxetine 60 mg and placebo on median reduction from baseline in frequency of bulimic behaviors at endpoint, ranged from 1 to 2 episodes per week for binge-eating and 2 to 4 episodes per week for vomiting. The size of the effect was related to baseline frequency, with greater reductions seen in patients with higher baseline frequencies. Although some patients achieved freedom from binge-eating and purging as a result of treatment, for the majority, the benefit was a partial reduction in the frequency of binge-eating and purging.

In a longer-term trial, 150 patients meeting DSM-IV criteria for Bulimia Nervosa, purging subtype, who had responded during a single-blind, 8-week acute treatment phase with fluoxetine 60 mg/day, were randomized to continuation of fluoxetine 60 mg/day or placebo, for up to 52 weeks of observation for relapse. Response during the single-blind phase was defined by having achieved at least a 50% decrease in vomiting frequency compared with baseline. Relapse during the double-blind phase was defined as a persistent return to baseline vomiting frequency or physician judgment that the patient had relapsed. Patients receiving continued fluoxetine 60 mg/day experienced a significantly longer time to relapse over the subsequent 52 weeks compared with those receiving placebo.

### **14.4. Panic Disorder**

The effectiveness of fluoxetine in the treatment of Panic Disorder was demonstrated in 2 double-blind, randomized, placebo-controlled, multicenter studies of adult outpatients who had a primary diagnosis of Panic Disorder (DSM-IV), with or without agoraphobia.

Study 1 (N=180 randomized) was a 12-week flexible-dose study. Fluoxetine was initiated at 10 mg/day for the first week, after which patients were dosed in the range of 20 to 60 mg/day on the basis of clinical response and tolerability. A statistically significantly greater percentage of fluoxetine-treated patients were free from panic attacks at endpoint than placebo-treated patients, 42% versus 28%, respectively.

Study 2 (N=214 randomized) was a 12-week flexible-dose study. Fluoxetine was initiated at 10 mg/day for the first week, after which patients were dosed in a range of 20 to 60 mg/day on the basis of clinical response and tolerability. A statistically significantly greater percentage of fluoxetine-treated patients were free from panic attacks at endpoint than placebo-treated patients, 62% versus 44%, respectively.

## 16. HOW SUPPLIED/STORAGE AND HANDLING

### 16.1. How Supplied

The following products are manufactured by Alembic Pharmaceuticals Limited, India. Fluoxetine Capsules USP, are available in:

The 10-mg<sup>1</sup>, Capsule is Blue opaque cap and white opaque body, imprinted with “10” on the cap and “A105” on the body:

NDC 46708-271-30- Bottles of 30<sup>2</sup>  
NDC 46708-271-31- Bottles of 100<sup>2</sup>  
NDC 46708-271-71- Bottles of 500<sup>2</sup>  
NDC 46708-271-91 - Bottles of 1000<sup>2</sup>

The 20-mg<sup>1</sup>, Capsule is a Dark blue opaque cap and Light blue opaque body, imprinted with “20” on the cap and “A106” on the body:

NDC 46708-272-30- Bottles of 30<sup>2</sup>  
NDC 46708-272-31- Bottles of 100<sup>2</sup>  
NDC 46708-272-71- Bottles of 500<sup>2</sup>  
NDC 46708-272-91 - Bottles of 1000<sup>2</sup>

The 40-mg<sup>1</sup>, Capsule is a Light blue opaque cap and Light blue opaque body, imprinted with “40” on the cap and “A107” on the body:

NDC 46708-273-30- Bottles of 30<sup>2</sup>  
NDC 46708-273-31 - Bottles of 100<sup>2</sup>  
NDC 46708-273-71- Bottles of 500<sup>2</sup>  
NDC 46708-273-91- Bottles of 1000<sup>2</sup>

---

<sup>1</sup>Fluoxetine base equivalent

<sup>2</sup>Protect from light.

### 16.2. Storage and Handling

Store at 25°C (77°F); excursions permitted to 15° to 30°C (59 to 86°F), (See USP Controlled Room Temperature).

## 17. PATIENT COUNSELING INFORMATION

*See the FDA-approved Medication Guide.*

Patients should be advised of the following issues and asked to alert their prescriber if these occur while taking fluoxetine as monotherapy or in combination with olanzapine. When using fluoxetine and olanzapine in combination, also refer to the Patient Counseling Information section of the package insert for olanzapine and fluoxetine hydrochloride capsules.

### 17.1. General Information

Healthcare providers should instruct their patients to read the Medication Guide before starting therapy with fluoxetine and to reread it each time the prescription is renewed.

Healthcare providers should inform patients, their families, and their caregivers about the benefits and risks associated with treatment with fluoxetine and should counsel them in its appropriate use. Healthcare providers should instruct patients, their families, and their caregivers to read the Medication Guide and should assist them in understanding its contents. Patients should be given the opportunity to discuss the contents of the Medication Guide and to obtain answers to any questions they may have. Patients should be advised of the following issues and asked to alert their healthcare provider if these occur while taking fluoxetine.

*When using fluoxetine and olanzapine in combination, also refer to the Medication Guide for olanzapine and fluoxetine hydrochloride capsules.*

### 17.2. Suicidal Thoughts and Behaviors in Children, Adolescents, and Young Adults

Patients, their families, and their caregivers should be encouraged to be alert to the emergence of anxiety, agitation, panic attacks, insomnia, irritability, hostility, aggressiveness, impulsivity, akathisia (psychomotor restlessness), hypomania, mania, other unusual changes in behavior, worsening of depression, and suicidal ideation, especially early during antidepressant treatment and when the dose is adjusted up or

down. Families and caregivers of patients should be advised to look for the emergence of such symptoms on a day-to-day basis, since changes may be abrupt. Such symptoms should be reported to the patient's prescriber or health professional, especially if they are severe, abrupt in onset, or were not part of the patient's presenting symptoms. Symptoms such as these may be associated with an increased risk for suicidal thinking and behavior and indicate a need for very close monitoring and possibly changes in the medication [see Box Warning and Warnings and Precautions (5.1)].

### **17.3. Serotonin Syndrome**

Patients should be cautioned about the risk of serotonin syndrome with the concomitant use of fluoxetine and other serotonergic agents including triptans, tricyclic antidepressants, fentanyl, lithium, tramadol, buspirone, tryptophan, and St. John's Wort [see Contraindications (4.1), Warnings and Precautions (5.2), and Drug Interactions (7.3)].

Patients should be advised of the signs and symptoms associated with serotonin syndrome that may include mental status changes (e.g., agitation, hallucinations, delirium, and coma), autonomic instability (e.g., tachycardia, labile blood pressure, dizziness, diaphoresis, flushing, hyperthermia), neuromuscular changes (e.g., tremor, rigidity, myoclonus, hyperreflexia, incoordination), seizures, and/or gastrointestinal symptoms (e.g., nausea, vomiting, diarrhea). Patients should be cautioned to seek medical care immediately if they experience these symptoms.

### **17.4. Allergic Reactions and Rash**

Patients should be advised to notify their physician if they develop a rash or hives [see Warnings and Precautions (5.3)]. Patients should also be advised of the signs and symptoms associated with a severe allergic reaction, including swelling of the face, eyes, or mouth, or have trouble breathing. Patients should be cautioned to seek medical care immediately if they experience these symptoms.

### **17.5. Abnormal Bleeding**

Patients should be cautioned about the concomitant use of fluoxetine and NSAIDs, aspirin, warfarin, or other drugs that affect coagulation since combined use of psychotropic drugs that interfere with serotonin reuptake and these agents have been associated with an increased risk of bleeding [see Warnings and Precautions (5.7) and Drug Interactions (7.6)]. Patients should be advised to call their doctor if they experience any increased or unusual bruising or bleeding while taking fluoxetine.

### **17.6 Angle-Closure Glaucoma**

Patients should be advised that taking fluoxetine can cause mild pupillary dilation, which in susceptible individuals, can lead to an episode of angle-closure glaucoma. Pre-existing glaucoma is almost always open-angle glaucoma because angle-closure glaucoma, when diagnosed, can be treated definitively with iridectomy. Open-angle glaucoma is not a risk factor for angle-closure glaucoma. Patients may wish to be examined to determine whether they are susceptible to angle closure, and have a prophylactic procedure (e.g., iridectomy), if they are susceptible. [See Warnings and Precautions (5.8)]

### **17.7. Hyponatremia**

Patients should be advised that hyponatremia has been reported as a result of treatment with SNRIs and SSRIs, including fluoxetine. Signs and symptoms of hyponatremia include headache, difficulty concentrating, memory impairment, confusion, weakness, and unsteadiness, which may lead to falls. More severe and/or acute cases have been associated with hallucination, syncope, seizure, coma, respiratory arrest, and death [see Warnings and Precautions (5.9)].

### **17.8 QT Prolongation**

Patients should be advised that QT interval prolongation and ventricular arrhythmia including Torsades de Pointes have been reported in patients treated with fluoxetine. Signs and symptoms of ventricular arrhythmia include fast, slow, or irregular heart rate, dyspnea, syncope, or dizziness, which may indicate serious cardiac arrhythmia [see Warnings and Precautions (5.11)].

### **17.9. Potential for Cognitive and Motor Impairment**

Fluoxetine may impair judgment, thinking, or motor skills. Patients should be advised to avoid driving a car or operating hazardous machinery until they are reasonably certain

that their performance is not affected [see *Warnings and Precautions (5.13)*].

### **17.10. Use of Concomitant Medications**

Patients should be advised to inform their physician if they are taking, or plan to take, any prescription medication, including Symbyax (olanzapine and fluoxetine hydrochloride capsules), Sarafem (fluoxetine capsules), or over-the-counter drugs, including herbal supplements or alcohol. Patients should also be advised to inform their physicians if they plan to discontinue any medications they are taking while on fluoxetine.

### **17.11. Discontinuation of Treatment**

Patients should be advised to take fluoxetine exactly as prescribed, and to continue taking fluoxetine as prescribed even after their symptoms improve. Patients should be advised that they should not alter their dosing regimen, or stop taking fluoxetine without consulting their physician [see *Warnings and Precautions (5.15)*]. Patients should be advised to consult with their healthcare provider if their symptoms do not improve with fluoxetine.

### **17.12. Use in Specific Populations**

*Pregnancy* – Patients should be advised to notify their physician if they become pregnant or intend to become pregnant during therapy. Fluoxetine should be used during pregnancy only if the potential benefit justifies the potential risk to the fetus [see *Use in Specific Populations (8.1)*].

*Nursing Mothers* — Patients should be advised to notify their physician if they intend to breast-feed an infant during therapy. Because fluoxetine is excreted in human milk, nursing while taking fluoxetine is not recommended [see *Use in Specific Populations (8.3)*].

*Pediatric Use of Fluoxetine* — Fluoxetine is approved for use in pediatric patients with MDD and OCD [see *Box Warning and Warnings and Precautions (5.1)*]. Limited evidence is available concerning the longer-term effects of fluoxetine on the development and maturation of children and adolescent patients. Height and weight should be monitored periodically in pediatric patients receiving Fluoxetine. [see *Warnings and Precautions (5.6) and Use in Specific Populations (8.4)*].

Safety and effectiveness of fluoxetine and olanzapine in combination in patients less than 18 years of age have not been established [see *Warnings and Precautions (5.6) and Use in Specific Populations (8.4)*].

Information for pediatric patients (10 to 17 years) is approved for Eli Lilly and Company's Fluoxetine Capsules. However due to Eli Lilly and Company's marketing exclusivity rights, this drug product is not labeled with that pediatric information.

## **Medication Guide**

### **Fluoxetine (floo ox' e teen) Capsules USP**

Read the Medication Guide that comes with fluoxetine capsules before you start taking it and each time you get a refill. There may be new information. This Medication Guide does not take the place of talking to your healthcare provider about your medical condition or treatment. Talk with your healthcare provider if there is something you do not understand or want to learn more about.

#### **What is the most important information I should know about fluoxetine?**

Fluoxetine and other antidepressant medicines may cause serious side effects, including:

##### **1. Suicidal thoughts or actions:**

• **Fluoxetine and other antidepressant medicines may increase suicidal thoughts or actions** in some children, teenagers, or young adults within the **first few months of treatment or when the dose is changed.**

- Depression or other serious mental illnesses are the most important causes of suicidal thoughts or actions.
- Watch for these changes and call your healthcare provider right away if you notice:
- New or sudden changes in mood, behavior, actions, thoughts, or feelings, especially if



severe.

- Pay particular attention to such changes when fluoxetine is started or when the dose is changed.

Keep all follow-up visits with your healthcare provider and call between visits if you are worried about symptoms.

**Call your healthcare provider right away if you have any of the following symptoms, or call 911 if an emergency, especially if they are new, worse, or worry you:**

- attempts to commit suicide
- acting on dangerous impulses
- acting aggressive or violent
- thoughts about suicide or dying
- new or worse depression
- new or worse anxiety or panic attacks
- feeling agitated, restless, angry or irritable
- trouble sleeping
- an increase in activity or talking more than what is normal for you
- other unusual changes in behavior or mood

**Call your healthcare provider right away if you have any of the following symptoms, or call 911 if an emergency. Fluoxetine may be associated with these serious side effects:**

**2. Serotonin Syndrome. This condition can be life-threatening and may include:**

- agitation, hallucinations, coma or other changes in mental status
- coordination problems or muscle twitching (overactive reflexes)
- racing heartbeat, high or low blood pressure
- sweating or fever
- nausea, vomiting, or diarrhea
- muscle rigidity
- dizziness
- flushing
- tremor
- seizure

**3. Severe allergic reactions:**

- trouble breathing
- swelling of the face, tongue, eyes or mouth
- rash, itchy welts (hives) or blisters, alone or with fever or joint pain

**4. Abnormal bleeding:** Fluoxetine and other antidepressant medicines may increase your risk of bleeding or bruising, especially if you take the blood thinner warfarin (Coumadin®, Jantoven®), a non-steroidal anti-inflammatory drug (NSAIDs, like ibuprofen or naproxen), or aspirin.

**5. Visual problems:**

- eye pain
- changes in vision
- swelling or redness in or around the eye

Only some people are at risk for these problems. You may want to undergo an eye examination to see if you are at risk and receive preventative treatment if you are.

**6. Seizures or convulsions**

**7. Manic episodes:**

- greatly increased energy
- severe trouble sleeping
- racing thoughts
- reckless behavior
- unusually grand ideas
- excessive happiness or irritability
- talking more or faster than usual

**8. Changes in appetite or weight.** Children and adolescents should have height and weight monitored during treatment.

**9. Low salt (sodium) levels in the blood.** Elderly people may be at greater risk for this. Symptoms may include:

- headache
- weakness or feeling unsteady
- confusion, problems concentrating or thinking or memory problems

**10. Changes in the electrical activity of your heart (QT prolongation and ventricular arrhythmia including Torsades de Pointes). This condition can be life threatening. The symptoms may include:**

- fast, slow, or irregular heartbeat
- shortness of breath
- dizziness or fainting

**Do not stop fluoxetine without first talking to your healthcare provider.**

Stopping fluoxetine too quickly may cause serious symptoms including:

- anxiety, irritability, high or low mood, feeling restless or changes in sleep habits
- headache, sweating, nausea, dizziness
- electric shock-like sensations, shaking, confusion

**What is fluoxetine?**

Fluoxetine is a prescription medicine used to treat depression. It is important to talk with your healthcare provider about the risks of treating depression and also the risks of not treating it. You should discuss all treatment choices with your healthcare provider.

Fluoxetine is used to treat:

- Major Depressive Disorder (MDD)
- Obsessive Compulsive Disorder (OCD)
- Bulimia Nervosa\*
- Panic Disorder\*
- Depressive episodes associated with Bipolar I Disorder, taken with olanzapine (Zyprexa)\*

\*Not approved for use in children

Information for pediatric patients (10 to 17 years) is approved for Eli Lilly and Company's Fluoxetine Capsules. However due to Eli Lilly and Company's marketing exclusivity rights, this drug product is not labeled with that pediatric information.

Talk to your healthcare provider if you do not think that your condition is getting better with fluoxetine treatment.

**Who should not take fluoxetine?**

Do not take fluoxetine if you:

- are allergic to fluoxetine hydrochloride or any of the ingredients in fluoxetine hydrochloride capsules. See the end of this Medication Guide for a complete list of ingredients in fluoxetine hydrochloride capsules.
- take a Monoamine Oxidase Inhibitor (MAOI). Ask your healthcare provider or pharmacist if you are not sure if you take an MAOI, including the antibiotic linezolid.
- Do not take an MAOI within 5 weeks of stopping fluoxetine, unless directed to do so by your physician.
- Do not start fluoxetine if you stopped taking an MAOI in the last 2 weeks, unless directed to do so by your physician.

**People who take fluoxetine close in time to an MAOI may have serious or even life-threatening side effects. Get medical help right away if you have any of these symptoms:**

- high fever
- uncontrolled muscle spasms
- stiff muscles
- rapid changes in heart rate or blood pressure
- confusion
- loss of consciousness (pass out)
- **take Mellaril® (thioridazine). Do not take Mellaril® within 5 weeks of stopping fluoxetine because this can cause serious heart rhythm problems or sudden death.**
- **take the antipsychotic medicine pimozide (Orap®) because this can cause serious heart problems.**

**What should I tell my healthcare provider before taking fluoxetine? Ask if you are not sure.**

Before starting fluoxetine, tell your healthcare provider if you:

- Are taking certain drugs or treatments such as:
- Triptans used to treat migraine headache
- Medicines used to treat mood, anxiety, psychotic or thought disorders, including tricyclics, lithium, buspirone, SSRIs, SNRIs, MAOI's or antipsychotics
- Tramadol and fentanyl
- Over-the-counter supplements such as tryptophan or St. John's Wort
- Electroconvulsive therapy (ECT)
- have liver problems
- have kidney problems
- have heart problems

- have or had seizures or convulsions
- have bipolar disorder or mania
- have low sodium levels in your blood
- have a history of a stroke
- have high blood pressure
- have or had bleeding problems
- are pregnant or plan to become pregnant. It is not known if fluoxetine will harm your unborn baby. Talk to your healthcare provider about the benefits and risks of treating depression during pregnancy.
- are breast-feeding or plan to breast-feed. Some fluoxetine may pass into your breast milk. Talk to your healthcare provider about the best way to feed your baby while taking fluoxetine.

**Tell your healthcare provider about all the medicines that you take**, including prescription and non-prescription medicines, vitamins, and herbal supplements. Fluoxetine and some medicines may interact with each other, may not work as well, or may cause serious side effects.

Your healthcare provider or pharmacist can tell you if it is safe to take fluoxetine with your other medicines. Do not start or stop any medicine while taking fluoxetine without talking to your healthcare provider first.

If you take fluoxetine, you should not take any other medicines that contain fluoxetine including:

- |   |
|---|
| <ul style="list-style-type: none"> <li>• Symbyax</li> <li>• Sarafem</li> <li>• Prozac Weekly</li> </ul> |
|---|

### **How should I take fluoxetine?**

- Take fluoxetine exactly as prescribed. Your healthcare provider may need to change the dose of fluoxetine until it is the right dose for you.
- Fluoxetine may be taken with or without food.
- If you miss a dose of fluoxetine, take the missed dose as soon as you remember. If it is almost time for the next dose, skip the missed dose and take your next dose at the regular time. Do not take two doses of fluoxetine at the same time.
- If you take too much fluoxetine, call your healthcare provider or poison control center right away, or get emergency treatment.

### **What should I avoid while taking fluoxetine?**

Fluoxetine can cause sleepiness or may affect your ability to make decisions, think clearly, or react quickly. You should not drive, operate heavy machinery, or do other dangerous activities until you know how fluoxetine affects you. Do not drink alcohol while using fluoxetine.

### **What are the possible side effects of fluoxetine?**

Fluoxetine may cause serious side effects, including:

- See “What is the most important information I should know about fluoxetine?”
- **Problems with blood sugar control.** People who have diabetes and take fluoxetine may have problems with low blood sugar while taking fluoxetine. High blood sugar can happen when fluoxetine is stopped. Your healthcare provider may need to change the dose of your diabetes medicines when you start or stop taking fluoxetine.
- **Feeling anxious or trouble sleeping**

Common possible side effects in people who take fluoxetine include:

- unusual dreams
- sexual problems
- loss of appetite, diarrhea, indigestion, nausea or vomiting, weakness, or dry mouth
- flu symptoms
- feeling tired or fatigued
- change in sleep habits
- yawning
- sinus infection or sore throat
- tremor or shaking
- sweating
- feeling anxious or nervous
- hot flashes
- rash

Other side effects in children and adolescents include:

- increased thirst
- abnormal increase in muscle movement or agitation
- nose bleed
- urinating more often
- heavy menstrual periods
- possible slowed growth rate and weight change. Your child's height and weight should be monitored during treatment with fluoxetine.

Tell your healthcare provider if you have any side effect that bothers you or that does not go away. These are not all the possible side effects of fluoxetine. For more information, ask your healthcare provider or pharmacist.

**CALL YOUR DOCTOR FOR MEDICAL ADVICE ABOUT SIDE EFFECTS. YOU MAY REPORT SIDE EFFECTS TO THE FDA AT 1-800-FDA-1088.**

#### **How should I store fluoxetine?**

- Store at 25°C (77°F); excursions permitted to 15° to 30°C (59 to 86°F), (See USP Controlled Room Temperature).
- Keep fluoxetine away from light.
- Keep fluoxetine bottle closed tightly.

**Keep fluoxetine and all medicines out of the reach of children.**

#### **General information about fluoxetine**

Medicines are sometimes prescribed for purposes other than those listed in a Medication Guide. Do not use fluoxetine for a condition for which it was not prescribed. Do not give fluoxetine to other people, even if they have the same condition. It may harm them.

This Medication Guide summarizes the most important information about fluoxetine. If you would like more information, talk with your healthcare provider. You may ask your healthcare provider or pharmacist for information about fluoxetine that is written for healthcare professionals.

#### **What are the ingredients in fluoxetine?**

**Active ingredient:** fluoxetine hydrochloride

**Inactive ingredients in capsules:** lactose monohydrate, microcrystalline cellulose, colloidal silicone dioxide, gelatin, titanium dioxide, FD & C Blue No. 1 and FD & C Red No. 40.

This Medication Guide has been approved by the U.S. Food and Drug Administration.

Manufactured by: Alembic Pharmaceuticals Limited (Formulation Division),  
Village Panelav, P. O. Tajpura,  
Near Baska, Taluka-Halol,  
Panchmahal, Gujarat, India.

Symbyax® (olanzapine and fluoxetine hydrochloride capsules), Sarafem® (fluoxetine hydrochloride capsules), Prozac® Weekly™ (fluoxetine hydrochloride delayed-release capsules) and Zyprexa® (olanzapine) are registered trademark of Eli Lilly and Company.

Sarafem® (fluoxetine hydrochloride tablets) is a registered trademark of Warner Chilcott Company, Mellaril® (thioridazine) is a registered trademark of Novartis AG Corporation, Orap® (pimozid) is a register trademark of Teva Pharmaceuticals USA, Coumadin® (warfarin) is a registered trademark of Bristol Myers Squibb and Jantoven® (warfarin) is a registered trademark of Upsher-Smith Laboratories Inc.

Revised: 11/2014

#### **PACKAGE LABEL.PRINCIPAL DISPLAY PANEL - 10mg**

Fluoxetine Capsules USP 10 mg (30 Capsules in 1 Bottle)  
Each hard gelatin capsule contains: Fluoxetine Hydrochloride USP equivalent to fluoxetine 10 mg  
46708-271-30



**PACKAGE LABEL.PRINCIPAL DISPLAY PANEL - 20mg**

Fluoxetine Capsules USP 20 mg (100 Capsules in 1 Bottle)  
 Each hard gelatin capsule contains: Fluoxetine Hydrochloride USP equivalent to fluoxetine 20 mg  
 46708-272-30



**PACKAGE LABEL.PRINCIPAL DISPLAY PANEL - 40mg**

Fluoxetine Capsules USP 40 mg (30 Capsules in 1 Bottle)  
 Each hard gelatin capsule contains: Fluoxetine Hydrochloride USP equivalent to fluoxetine 40 mg  
 46708-273-30



<b>FLUOXETINE</b> fluoxetine capsule
<b>Product Information</b>

<b>Product Type</b>	HUMAN PRESCRIPTION DRUG	<b>Item Code (Source)</b>	NDC:46708-271	
<b>Route of Administration</b>	ORAL			
<b>Active Ingredient/Active Moiety</b>				
<b>Ingredient Name</b>	<b>Basis of Strength</b>	<b>Strength</b>		
FLUOXETINE HYDROCHLORIDE (UNII: I9W7N6B1KJ) (FLUOXETINE - UNII:01K63SUP8D)	FLUOXETINE	10 mg		
<b>Inactive Ingredients</b>				
<b>Ingredient Name</b>	<b>Strength</b>			
LACTOSE MONOHYDRATE (UNII: EWQ57Q8I5X)				
MICROCRYSTALLINE CELLULOSE (UNII: OP1R32D61U)				
SILICON DIOXIDE (UNII: ETJ7Z6XBU4)				
GELATIN, UNSPECIFIED (UNII: 2G86QN327L)				
TITANIUM DIOXIDE (UNII: 15FIX9V2JP)				
FD&C BLUE NO. 1 (UNII: H3R47K3TBD)				
FD&C RED NO. 40 (UNII: WZB9127XOA)				
<b>Product Characteristics</b>				
<b>Color</b>	BLUE (BLUE OPAQUE) , WHITE (WHITE OPAQUE)	<b>Score</b>	no score	
<b>Shape</b>	CAPSULE	<b>Size</b>	14mm	
<b>Flavor</b>		<b>Imprint Code</b>	10;A105	
<b>Contains</b>				
<b>Packaging</b>				
<b>#</b>	<b>Item Code</b>	<b>Package Description</b>	<b>Marketing Start Date</b>	<b>Marketing End Date</b>
1	NDC:46708-271-30	30 in 1 BOTTLE; Type 0: Not a Combination Product	07/01/2009	
2	NDC:46708-271-31	100 in 1 BOTTLE; Type 0: Not a Combination Product	07/01/2009	
3	NDC:46708-271-71	500 in 1 BOTTLE; Type 0: Not a Combination Product	07/01/2009	
4	NDC:46708-271-91	1000 in 1 BOTTLE; Type 0: Not a Combination Product	07/01/2009	
<b>Marketing Information</b>				
<b>Marketing Category</b>	<b>Application Number or Monograph Citation</b>	<b>Marketing Start Date</b>	<b>Marketing End Date</b>	
ANDA	ANDA090223	07/01/2009		

<b>FLUOXETINE</b>			
fluoxetine capsule			
<b>Product Information</b>			
<b>Product Type</b>	HUMAN PRESCRIPTION DRUG	<b>Item Code (Source)</b>	NDC:46708-272
<b>Route of Administration</b>	ORAL		
<b>Active Ingredient/Active Moiety</b>			
<b>Ingredient Name</b>	<b>Basis of Strength</b>	<b>Strength</b>	
FLUOXETINE HYDROCHLORIDE (UNII: I9W7N6B1KJ) (FLUOXETINE - UNII:01K63SUP8D)	FLUOXETINE	20 mg	
<b>Inactive Ingredients</b>			
<b>Ingredient Name</b>	<b>Strength</b>		
LACTOSE MONOHYDRATE (UNII: EWQ57Q8I5X)			
MICROCRYSTALLINE CELLULOSE (UNII: OP1R32D61U)			

<b>SILICON DIOXIDE</b> (UNII: ETJ7Z6XBU4)	
<b>GELATIN, UNSPECIFIED</b> (UNII: 2G86QN327L)	
<b>TITANIUM DIOXIDE</b> (UNII: 15FIX9V2JP)	
<b>FD&amp;C BLUE NO. 1</b> (UNII: H3R47K3TBD)	
<b>FD&amp;C RED NO. 40</b> (UNII: WZB9127XOA)	

### Product Characteristics

<b>Color</b>	BLUE (DARK BLUE OPAQUE) , BLUE (LIGHT BLUE OPAQUE)	<b>Score</b>	no score
<b>Shape</b>	CAPSULE	<b>Size</b>	15mm
<b>Flavor</b>		<b>Imprint Code</b>	20;A106
<b>Contains</b>			

### Packaging

#	Item Code	Package Description	Marketing Start Date	Marketing End Date
1	NDC:46708-272-30	30 in 1 BOTTLE; Type 0: Not a Combination Product	07/01/2009	
2	NDC:46708-272-31	100 in 1 BOTTLE; Type 0: Not a Combination Product	07/01/2009	
3	NDC:46708-272-71	500 in 1 BOTTLE; Type 0: Not a Combination Product	07/01/2009	
4	NDC:46708-272-91	1000 in 1 BOTTLE; Type 0: Not a Combination Product	07/01/2009	

### Marketing Information

Marketing Category	Application Number or Monograph Citation	Marketing Start Date	Marketing End Date
ANDA	ANDA090223	07/01/2009	

## FLUOXETINE

fluoxetine capsule

### Product Information

<b>Product Type</b>	HUMAN PRESCRIPTION DRUG	<b>Item Code (Source)</b>	NDC:46708-273
<b>Route of Administration</b>	ORAL		

### Active Ingredient/Active Moiety

Ingredient Name	Basis of Strength	Strength
<b>FLUOXETINE HYDROCHLORIDE</b> (UNII: I9W7N6B1KJ) (FLUOXETINE - UNII:01K63SUP8D)	FLUOXETINE	40 mg

### Inactive Ingredients

Ingredient Name	Strength
<b>LACTOSE MONOHYDRATE</b> (UNII: EWQ57Q8I5X)	
<b>MICROCRYSTALLINE CELLULOSE</b> (UNII: OP1R32D61U)	
<b>SILICON DIOXIDE</b> (UNII: ETJ7Z6XBU4)	
<b>GELATIN, UNSPECIFIED</b> (UNII: 2G86QN327L)	
<b>TITANIUM DIOXIDE</b> (UNII: 15FIX9V2JP)	
<b>FD&amp;C BLUE NO. 1</b> (UNII: H3R47K3TBD)	
<b>FD&amp;C RED NO. 40</b> (UNII: WZB9127XOA)	

### Product Characteristics

<b>Color</b>	BLUE (LIGHT BLUE OPAQUE)	<b>Score</b>	no score
<b>Shape</b>	CAPSULE	<b>Size</b>	19mm
<b>Flavor</b>		<b>Imprint Code</b>	40;A107
<b>Contains</b>			

### Packaging

#	Item Code	Package Description	Marketing Start Date	Marketing End Date

#	Item Code	Package Description	Marketing Start Date	Marketing End Date
1	NDC:46708-273-30	30 in 1 BOTTLE; Type 0: Not a Combination Product	07/01/2009	
2	NDC:46708-273-31	100 in 1 BOTTLE; Type 0: Not a Combination Product	07/01/2009	
3	NDC:46708-273-71	500 in 1 BOTTLE; Type 0: Not a Combination Product	07/01/2009	
4	NDC:46708-273-91	1000 in 1 BOTTLE; Type 0: Not a Combination Product	07/01/2009	

### Marketing Information

Marketing Category	Application Number or Monograph Citation	Marketing Start Date	Marketing End Date
ANDA	ANDA090223	07/01/2009	

**Labeler** - Alembic Pharmaceuticals Limited (650574663)

**Registrant** - Alembic Pharmaceuticals Limited (650574663)

### Establishment

Name	Address	ID/FEI	Business Operations
Alembic Pharmaceuticals Limited		650574671	MANUFACTURE(46708-271, 46708-272, 46708-273)

Revised: 1/2023

Alembic Pharmaceuticals Limited