

**DIAZEPAM- diazepam tablet**  
**Preferred Pharmaceuticals Inc.**

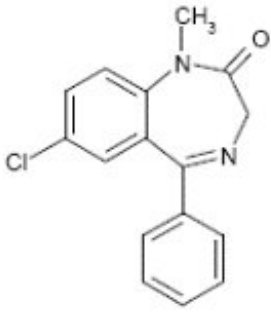
-----  
**Diazepam Tablets, USP**  
**2 mg, 5 mg and 10 mg**  
**Rx only**

**WARNING: RISKS FROM CONCOMITANT USE WITH OPIOIDS; ABUSE, MISUSE, AND ADDICTION; and DEPENDENCE AND WITHDRAWAL REACTIONS**

- **Concomitant use of benzodiazepines and opioids may result in profound sedation, respiratory depression, coma, and death. Reserve concomitant prescribing of these drugs in patients for whom alternative treatment options are inadequate. Limit dosages and durations to the minimum required. Follow patients for signs and symptoms of respiratory depression and sedation (see WARNINGS and PRECAUTIONS).**
- **The use of benzodiazepines, including diazepam tablets, exposes users to risks of abuse, misuse, and addiction, which can lead to overdose or death. Abuse and misuse of benzodiazepines commonly involve concomitant use of other medications, alcohol, and/or illicit substances, which is associated with an increased frequency of serious adverse outcomes. Before prescribing diazepam tablets and throughout treatment, assess each patient's risk for abuse, misuse, and addiction (see WARNINGS).**
- **The continued use of benzodiazepines, including diazepam tablets, may lead to clinically significant physical dependence. The risks of dependence and withdrawal increase with longer treatment duration and higher daily dose. Abrupt discontinuation or rapid dosage reduction of diazepam tablets after continued use may precipitate acute withdrawal reactions, which can be life-threatening. To reduce the risk of withdrawal reactions, use a gradual taper to discontinue diazepam tablets or reduce the dosage (see DOSAGE AND ADMINISTRATION and WARNINGS).**

**DESCRIPTION**

Diazepam is a benzodiazepine derivative. The chemical name of diazepam is 7-Chloro-1,3-dihydro-1-methyl-5-phenyl-2H-1,4-benzodiazepin-2-one. It is a colorless to light yellow crystalline compound, insoluble in water. The molecular formula is C<sub>16</sub>H<sub>13</sub>ClN<sub>2</sub>O and the molecular weight is 284.7. The structural formula is as follows:



Diazepam is available for oral administration as tablets containing 2 mg, 5 mg or 10 mg diazepam, USP. In addition to the active ingredient diazepam, each tablet contains the following inactive ingredients: colloidal silicon dioxide, magnesium stearate, microcrystalline cellulose, pregelatinized starch (corn) and sodium lauryl sulfate. The 5 mg tablets also contain FD&C Yellow No. 6 Aluminum Lake. The 10 mg tablets also contain D&C Yellow No. 10 Aluminum Lake and FD&C Blue No. 1 Aluminum Lake.

## **CLINICAL PHARMACOLOGY**

Diazepam is a benzodiazepine that exerts anxiolytic, sedative, muscle-relaxant, anticonvulsant and amnesic effects. Most of these effects are thought to result from a facilitation of the action of gamma aminobutyric acid (GABA), an inhibitory neurotransmitter in the central nervous system.

### **Pharmacokinetics**

#### ***Absorption***

After oral administration > 90% of diazepam is absorbed and the average time to achieve peak plasma concentrations is 1-1.5 hours with a range of 0.25 to 2.5 hours. Absorption is delayed and decreased when administered with a moderate fat meal. In the presence of food mean lag times are approximately 45 minutes as compared with 15 minutes when fasting. There is also an increase in the average time to achieve peak concentrations to about 2.5 hours in the presence of food as compared with 1.25 hours when fasting. This results in an average decrease in  $C_{max}$  of 20% in addition to a 27% decrease in AUC (range 15% to 50%) when administered with food.

#### ***Distribution***

Diazepam and its metabolites are highly bound to plasma proteins (diazepam 98%). Diazepam and its metabolites cross the blood-brain and placental barriers and are also found in breast milk in concentrations approximately one tenth of those in maternal plasma (days 3 to 9 post-partum). In young healthy males, the volume of distribution at steady-state is 0.8 to 1.0 L/kg. The decline in the plasma concentration-time profile after oral administration is biphasic. The initial distribution phase has a half-life of approximately 1 hour, although it may range up to > 3 hours.

#### ***Metabolism***

Diazepam is N-demethylated by CYP3A4 and 2C19 to the active metabolite N-

desmethyldiazepam, and is hydroxylated by CYP3A4 to the active metabolite temazepam. N-desmethyldiazepam and temazepam are both further metabolized to oxazepam. Temazepam and oxazepam are largely eliminated by glucuronidation.

### ***Elimination***

The initial distribution phase is followed by a prolonged terminal elimination phase (half-life up to 48 hours). The terminal elimination half-life of the active metabolite N-desmethyldiazepam is up to 100 hours. Diazepam and its metabolites are excreted mainly in the urine, predominantly as their glucuronide conjugates. The clearance of diazepam is 20 to 30 mL/min in young adults. Diazepam accumulates upon multiple dosing and there is some evidence that the terminal elimination half-life is slightly prolonged.

## **Pharmacokinetics in Special Populations**

### ***Children***

In children 3-8 years old the mean half-life of diazepam has been reported to be 18 hours.

### ***Newborns***

In full term infants, elimination half-lives around 30 hours have been reported, with a longer average half-life of 54 hours reported in premature infants of 28-34 weeks gestational age and 8-81 days post-partum. In both premature and full term infants the active metabolite desmethyldiazepam shows evidence of continued accumulation compared to children. Longer half-lives in infants may be due to incomplete maturation of metabolic pathways.

### ***Geriatric***

Elimination half-life increases by approximately 1 hour for each year of age beginning with a half-life of 20 hours at 20 years of age. This appears to be due to an increase in volume of distribution with age and a decrease in clearance. Consequently, the elderly may have lower peak concentrations, and on multiple dosing higher trough concentrations. It will also take longer to reach steady-state. Conflicting information has been published on changes of plasma protein binding in the elderly. Reported changes in free drug may be due to significant decreases in plasma proteins due to causes other than simply aging.

### ***Hepatic Insufficiency***

In mild and moderate cirrhosis, average half-life is increased. The average increase has been variously reported from 2-fold to 5-fold, with individual half-lives over 500 hours reported. There is also an increase in volume of distribution, and average clearance decreases by almost half. Mean half-life is also prolonged with hepatic fibrosis to 90 hours (range 66-104 hours), with chronic active hepatitis to 60 hours (range 26-76 hours), and with acute viral hepatitis to 74 hours (range 49-129). In chronic active hepatitis, clearance is decreased by almost half.

## **INDICATIONS AND USAGE**

Diazepam tablets are indicated for the management of anxiety disorders or for the short-term relief of the symptoms of anxiety. Anxiety or tension associated with the stress of everyday life usually does not require treatment with an anxiolytic.

In acute alcohol withdrawal, diazepam tablets may be useful in the symptomatic relief of acute agitation, tremor, impending or acute delirium tremens and hallucinosis.

Diazepam tablets are a useful adjunct for the relief of skeletal muscle spasm due to reflex spasm to local pathology (such as inflammation of the muscles or joints, or secondary to trauma), spasticity caused by upper motor neuron disorders (such as cerebral palsy and paraplegia), athetosis, and stiff-man syndrome.

Oral diazepam tablets may be used adjunctively in convulsive disorders, although it has not proved useful as the sole therapy.

The effectiveness of diazepam tablets in long-term use, that is, more than 4 months, has not been assessed by systematic clinical studies. The physician should periodically reassess the usefulness of the drug for the individual patient.

## **CONTRAINDICATIONS**

Diazepam tablets are contraindicated in patients with a known hypersensitivity to diazepam and, because of lack of sufficient clinical experience, in pediatric patients under 6 months of age. Diazepam tablets are also contraindicated in patients with myasthenia gravis, severe respiratory insufficiency, severe hepatic insufficiency, and sleep apnea syndrome. They may be used in patients with open-angle glaucoma who are receiving appropriate therapy, but is contraindicated in acute narrow-angle glaucoma.

## **WARNINGS**

### **Risks from Concomitant Use with Opioids**

Concomitant use of benzodiazepines, including diazepam tablets, and opioids may result in profound sedation, respiratory depression, coma, and death. Because of these risks, reserve concomitant prescribing of these drugs in patients for whom alternative treatment options are inadequate.

Observational studies have demonstrated that concomitant use of opioid analgesics and benzodiazepines increases the risk of drug-related mortality compared to use of opioids alone. If a decision is made to prescribe diazepam tablets concomitantly with opioids, prescribe the lowest effective dosages and minimum durations of concomitant use, and follow patients closely for signs and symptoms of respiratory depression and sedation. In patients already receiving an opioid analgesic, prescribe a lower initial dose of diazepam tablets than indicated in the absence of an opioid and titrate based on clinical response. If an opioid is initiated in a patient already taking diazepam tablets, prescribe a lower initial dose of the opioid and titrate based upon clinical response.

Advise both patients and caregivers about the risks of respiratory depression and sedation when diazepam tablets are used with opioids. Advise patients not to drive or operate heavy machinery until the effects of concomitant use with the opioid have been determined (see PRECAUTIONS: Drug Interactions).

## **Abuse, Misuse, and Addiction**

The use of benzodiazepines, including diazepam tablets, exposes users to the risks of abuse, misuse, and addiction, which can lead to overdose or death. Abuse and misuse of benzodiazepines often (but not always) involve the use of doses greater than the maximum recommended dosage and commonly involve concomitant use of other medications, alcohol, and/or illicit substances, which is associated with an increased frequency of serious adverse outcomes, including respiratory depression, overdose, or death (see DRUG ABUSE AND DEPENDENCE: Abuse).

Before prescribing diazepam tablets and throughout treatment, assess each patient's risk for abuse, misuse, and addiction (e.g., using a standardized screening tool). Use of diazepam tablets, particularly in patients at elevated risk, necessitates counseling about the risks and proper use of diazepam tablets along with monitoring for signs and symptoms of abuse, misuse, and addiction. Prescribe the lowest effective dosage; avoid or minimize concomitant use of CNS depressants and other substances associated with abuse, misuse, and addiction (e.g., opioid analgesics, stimulants); and advise patients on the proper disposal of unused drug. If a substance use disorder is suspected, evaluate the patient and institute (or refer them for) early treatment, as appropriate.

## **Dependence and Withdrawal Reactions**

To reduce the risk of withdrawal reactions, use a gradual taper to discontinue diazepam tablets or reduce the dosage (a patient-specific plan should be used to taper the dose) (see DOSAGE AND ADMINISTRATION: Discontinuation or Dosage Reduction of Diazepam Tablets).

Patients at an increased risk of withdrawal adverse reactions after benzodiazepine discontinuation or rapid dosage reduction include those who take higher dosages, and those who have had longer durations of use.

## **Acute Withdrawal Reactions**

The continued use of benzodiazepines, including diazepam tablets, may lead to clinically significant physical dependence. Abrupt discontinuation or rapid dosage reduction of diazepam tablets after continued use, or administration of flumazenil (a benzodiazepine antagonist) may precipitate acute withdrawal reactions, which can be life-threatening (e.g., seizures) (see DRUG ABUSE AND DEPENDENCE: Dependence).

## **Protracted Withdrawal Syndrome**

In some cases, benzodiazepine users have developed a protracted withdrawal syndrome with withdrawal symptoms lasting weeks to more than 12 months (see DRUG ABUSE AND DEPENDENCE: Dependence).

Diazepam tablets are not recommended in the treatment of psychotic patients and should not be employed instead of appropriate treatment.

Since diazepam tablets have a central nervous system depressant effect, patients should be advised against the simultaneous ingestion of alcohol and other CNS-depressant drugs during diazepam tablets therapy.

As with other agents that have anticonvulsant activity, when diazepam tablets are used as an adjunct in treating convulsive disorders, the possibility of an increase in the

frequency and/or severity of grand mal seizures may require an increase in the dosage of standard anticonvulsant medication. Abrupt withdrawal of diazepam tablets in such cases may also be associated with a temporary increase in the frequency and/or severity of seizures.

### **Neonatal Sedation and Withdrawal Syndrome**

Use of diazepam tablets late in pregnancy can result in sedation (respiratory depression, lethargy, hypotonia) and/or withdrawal symptoms (hyperreflexia, irritability, restlessness, tremors, inconsolable crying, and feeding difficulties) in the neonate (see PRECAUTIONS: Pregnancy). Monitor neonates exposed to diazepam during pregnancy or labor for signs of sedation and monitor neonates exposed to diazepam during pregnancy for signs of withdrawal; manage these neonates accordingly.

## **PRECAUTIONS**

### **General**

If diazepam tablets are to be combined with other psychotropic agents or anticonvulsant drugs, careful consideration should be given to the pharmacology of the agents to be employed - particularly with known compounds that may potentiate the action of diazepam, such as phenothiazines, narcotics, barbiturates, MAO inhibitors and other antidepressants (see Drug Interactions).

The usual precautions are indicated for severely depressed patients or those in whom there is any evidence of latent depression or anxiety associated with depression, particularly the recognition that suicidal tendencies may be present and protective measures may be necessary.

Psychiatric and paradoxical reactions are known to occur when using benzodiazepines (see ADVERSE REACTIONS). Should this occur, use of the drug should be discontinued. These reactions are more likely to occur in children and the elderly.

A lower dose is recommended for patients with chronic respiratory insufficiency, due to the risk of respiratory depression.

Benzodiazepines should be used with extreme caution in patients with a history of alcohol or drug abuse (see DRUG ABUSE AND DEPENDENCE).

In debilitated patients, it is recommended that the dosage be limited to the smallest effective amount to preclude the development of ataxia or oversedation (2 mg to 2.5 mg once or twice daily, initially, to be increased gradually as needed and tolerated). Some loss of response to the effects of benzodiazepines may develop after repeated use of diazepam tablets for a prolonged time.

### **Information for Patients**

Advise the patient to read the FDA-approved patient labeling (Medication Guide).

### ***Risks from Concomitant Use with Opioids***

Advise both patients and caregivers about the risks of potentially fatal respiratory depression and sedation when diazepam tablets are used with opioids and not to use

such drugs concomitantly unless supervised by a health care provider. Advise patients not to drive or operate heavy machinery until the effects of concomitant use with the opioid have been determined (see WARNINGS: Risks from Concomitant Use with Opioids and PRECAUTIONS: Drug Interactions).

### ***Abuse, Misuse, and Addiction***

Inform patients that the use of diazepam tablets, even at recommended dosages, exposes users to risks of abuse, misuse, and addiction, which can lead to overdose and death, especially when used in combination with other medications (e.g., opioid analgesics), alcohol, and/or illicit substances. Inform patients about the signs and symptoms of benzodiazepine abuse, misuse, and addiction; to seek medical help if they develop these signs and/or symptoms; and on the proper disposal of unused drug (see WARNINGS: Abuse, Misuse, and Addiction and DRUG ABUSE AND DEPENDENCE).

### ***Withdrawal Reactions***

Inform patients that the continued use of diazepam tablets may lead to clinically significant physical dependence and that abrupt discontinuation or rapid dosage reduction of diazepam tablets may precipitate acute withdrawal reactions, which can be life-threatening. Inform patients that in some cases, patients taking benzodiazepines have developed a protracted withdrawal syndrome with withdrawal symptoms lasting weeks to more than 12 months. Instruct patients that discontinuation or dosage reduction of diazepam tablets may require a slow taper (see WARNINGS: Dependence and Withdrawal Reactions and DRUG ABUSE AND DEPENDENCE).

Patients should be advised against the simultaneous ingestion of alcohol and other CNS-depressant drugs during diazepam tablets therapy. As is true of most CNS-acting drugs, patients receiving diazepam tablets should be cautioned against engaging in hazardous occupations requiring complete mental alertness, such as operating machinery or driving a motor vehicle.

### ***Pregnancy***

Advise pregnant females that use of diazepam tablets late in pregnancy can result in sedation (respiratory depression, lethargy, hypotonia) and/or withdrawal symptoms (hyperreflexia, irritability, restlessness, tremors, inconsolable crying, and feeding difficulties) in newborns (see WARNINGS: Neonatal Sedation and Withdrawal Syndrome and PRECAUTIONS: Pregnancy). Instruct patients to inform their healthcare provider if they are pregnant.

Advise patients that there is a pregnancy exposure registry that monitors pregnancy outcomes in women exposed to diazepam tablets during pregnancy (see Precautions, Pregnancy).

### ***Nursing***

Advise patients that breastfeeding is not recommended during treatment with diazepam tablets (see PRECAUTIONS: Nursing Mothers).

### **Drug Interactions**

### ***Opioids***

The concomitant use of benzodiazepines and opioids increases the risk of respiratory depression because of actions at different receptor sites in the CNS that control respiration. Benzodiazepines interact at GABA<sub>A</sub> sites and opioids interact primarily at mu receptors. When benzodiazepines and opioids are combined, the potential for benzodiazepines to significantly worsen opioid-related respiratory depression exists. Limit dosage and duration of concomitant use of benzodiazepines and opioids, and monitor patients closely for respiratory depression and sedation.

### ***Centrally Acting Agents***

If diazepam tablets are to be combined with other centrally acting agents, careful consideration should be given to the pharmacology of the agents employed particularly with compounds that may potentiate or be potentiated by the action of diazepam tablets, such as phenothiazines, antipsychotics, anxiolytics/sedatives, hypnotics, anticonvulsants, narcotic analgesics, anesthetics, sedative antihistamines, narcotics, barbiturates, MAO inhibitors and other antidepressants.

### ***Alcohol***

Concomitant use with alcohol is not recommended due to enhancement of the sedative effect.

### ***Antacids***

Diazepam peak concentrations are 30% lower when antacids are administered concurrently. However, there is no effect on the extent of absorption. The lower peak concentrations appear due to a slower rate of absorption, with the time required to achieve peak concentrations on average 20-25 minutes greater in the presence of antacids. However, this difference was not statistically significant.

### ***Compounds Which Inhibit Certain Hepatic Enzymes***

There is a potentially relevant interaction between diazepam and compounds which inhibit certain hepatic enzymes (particularly cytochrome P450 3A and 2C19). Data indicate that these compounds influence the pharmacokinetics of diazepam and may lead to increased and prolonged sedation. At present, this reaction is known to occur with cimetidine, ketoconazole, fluvoxamine, fluoxetine, and omeprazole.

### ***Phenytoin***

There have also been reports that the metabolic elimination of phenytoin is decreased by diazepam.

### ***Carcinogenesis, Mutagenesis, Impairment of Fertility***

In studies in which mice and rats were administered diazepam in the diet at a dose of 75 mg/kg/day (approximately 6 and 12 times, respectively, the maximum recommended human dose [MRHD = 1 mg/kg/day] on a mg/m<sup>2</sup> basis) for 80 and 104 weeks, respectively, an increased incidence of liver tumors was observed in males of both species. The data currently available are inadequate to determine the mutagenic potential of diazepam. Reproduction studies in rats showed decreases in the number of pregnancies and in the number of surviving offspring following administration of an oral dose of 100 mg/kg/day (approximately 16 times the MRHD on a mg/m<sup>2</sup> basis) prior to

and during mating and throughout gestation and lactation. No adverse effects on fertility or offspring viability were noted at a dose of 80 mg/kg/day (approximately 13 times the MRHD on a mg/m<sup>2</sup> basis).

## **Pregnancy**

### ***Pregnancy Exposure Registry***

There is a pregnancy registry that monitors pregnancy outcomes in women exposed to psychiatric medications, including diazepam tablets, during pregnancy.

Healthcare providers are encouraged to register patients by calling the National Pregnancy Registry for Psychiatric Medications at 1-866-961-2388 or visiting online at <https://womensmentalhealth.org/pregnancyregistry/>.

### ***Risk Summary***

Neonates born to mothers using benzodiazepines late in pregnancy have been reported to experience symptoms of sedation and/or neonatal withdrawal (see WARNINGS: Neonatal Sedation and Withdrawal Syndrome and Clinical Considerations). Available data from published observational studies of pregnant women exposed to benzodiazepines do not report a clear association with benzodiazepines and major birth defects (see Data).

Diazepam has been shown to be teratogenic in mice and hamsters when given orally at daily doses of 100 mg/kg or greater (approximately eight times the maximum recommended human dose [MRHD=1 mg/kg/day] or greater on a mg/m<sup>2</sup> basis). Cleft palate and encephalopathy are the most common and consistently reported malformations produced in these species by administration of high, maternally toxic doses of diazepam during organogenesis.

The background risk of major birth defects and miscarriage for the indicated population is unknown. All pregnancies have a background risk of birth defect, loss, or other adverse outcomes. In the U.S. general population, the estimated risk of major birth defects and of miscarriage in clinically recognized pregnancies is 2% to 4% and 15% to 20%, respectively.

### ***Clinical Considerations***

#### ***Fetal/Neonatal Adverse Reactions***

Benzodiazepines cross the placenta and may produce respiratory depression, hypotonia and sedation in neonates. Monitor neonates exposed to diazepam during pregnancy and labor for signs of sedation, respiratory depression, hypotonia, and feeding problems. Monitor neonates exposed to diazepam during pregnancy for signs of withdrawal. Manage these neonates accordingly (see WARNINGS: Neonatal Sedation and Withdrawal Syndrome).

#### ***Labor or Delivery***

Special care must be taken when diazepam tablets are used during labor and delivery, as high single doses may produce irregularities in the fetal heart rate and hypotonia, poor sucking, hypothermia, and moderate respiratory depression in the neonates. With

newborn infants it must be remembered that the enzyme system involved in the breakdown of the drug is not yet fully developed (especially in premature infants).

## **Data**

### **Human Data**

Published data from observational studies on the use of benzodiazepines during pregnancy do not report a clear association with benzodiazepines and major birth defects. Although early studies reported an increased risk of congenital malformations with diazepam and chlordiazepoxide, there was no consistent pattern noted. In addition, the majority of more recent case-control and cohort studies of benzodiazepine use during pregnancy, which were adjusted for confounding exposures to alcohol, tobacco and other medications, have not confirmed these findings.

### **Animal Data**

Diazepam has been shown to be teratogenic in mice and hamsters when given orally at daily doses of 100 mg/kg or greater (approximately eight times the maximum recommended human dose [MRHD=1 mg/kg/day] or greater on a mg/m<sup>2</sup> basis). Cleft palate and encephalopathy are the most common and consistently reported malformations produced in these species by administration of high, maternally toxic doses of diazepam during organogenesis. Rodent studies have indicated that prenatal exposure to diazepam doses similar to those used clinically can produce long-term changes in cellular immune responses, brain neurochemistry, and behavior.

### **Nursing Mothers**

Diazepam is present in breastmilk. There are reports of sedation, poor feeding, and poor weight gain in infants exposed to benzodiazepines through breast milk. Because of the potential for serious adverse reaction, including sedation and withdrawal symptoms in breastfed infants, advise patient that breastfeeding is not recommended during treatment with diazepam tablets.

### **Pediatric Use**

Safety and effectiveness in pediatric patients below the age of 6 months have not been established.

### **Geriatric Use**

In elderly patients, it is recommended that the dosage be limited to the smallest effective amount to preclude the development of ataxia or oversedation (2 mg to 2.5 mg once or twice daily, initially to be increased gradually as needed and tolerated).

Extensive accumulation of diazepam and its major metabolite, desmethyldiazepam, has been noted following chronic administration of diazepam in healthy elderly male subjects. Metabolites of this drug are known to be substantially excreted by the kidney, and the risk of toxic reactions may be greater in patients with impaired renal function. Because elderly patients are more likely to have decreased renal function, care should be taken in dose selection, and it may be useful to monitor renal function.

### **Hepatic Insufficiency**

Decreases in clearance and protein binding, and increases in volume of distribution and half-life have been reported in patients with cirrhosis. In such patients, a 2- to 5-fold increase in mean half-life has been reported. Delayed elimination has also been reported for the active metabolite desmethyldiazepam. Benzodiazepines are commonly implicated in hepatic encephalopathy. Increases in half-life have also been reported in hepatic fibrosis and in both acute and chronic hepatitis (see CLINICAL PHARMACOLOGY: Pharmacokinetics in Special Populations: Hepatic Insufficiency).

## **ADVERSE REACTIONS**

Side effects most commonly reported were drowsiness, fatigue, muscle weakness, and ataxia. The following have also been reported:

**Central Nervous System:** confusion, depression, dysarthria, headache, slurred speech, tremor, vertigo

**Gastrointestinal System:** constipation, nausea, gastrointestinal disturbances

**Special Senses:** blurred vision, diplopia, dizziness

**Cardiovascular System:** hypotension

**Psychiatric and Paradoxical Reactions:** stimulation, restlessness, acute hyperexcited states, anxiety, agitation, aggressiveness, irritability, rage, hallucinations, psychoses, delusions, increased muscle spasticity, insomnia, sleep disturbances, and nightmares. Inappropriate behavior and other adverse behavioral effects have been reported when using benzodiazepines. Should these occur, use of the drug should be discontinued. They are more likely to occur in children and in the elderly.

**Urogenital System:** incontinence, changes in libido, urinary retention

**Skin and Appendages:** skin reactions

**Laboratories:** elevated transaminases and alkaline phosphatase

**Other:** changes in salivation, including dry mouth, hypersalivation

Antegrade amnesia may occur using therapeutic dosages, the risk increasing at higher dosages. Amnestic effects may be associated with inappropriate behavior.

Minor changes in EEG patterns, usually low-voltage fast activity, have been observed in patients during and after diazepam tablets therapy and are of no known significance.

Because of isolated reports of neutropenia and jaundice, periodic blood counts and liver function tests are advisable during long-term therapy.

## **Postmarketing Experience**

### ***Injury, Poisoning and Procedural Complications***

There have been reports of falls and fractures in benzodiazepine users. The risk is increased in those taking concomitant sedatives (including alcohol), and in the elderly.

## **DRUG ABUSE AND DEPENDENCE**

## **Controlled Substance**

Diazepam tablets contain diazepam, a Schedule IV controlled substance.

## **Abuse**

Diazepam tablets are a benzodiazepine and a CNS depressant with a potential for abuse and addiction. Abuse is the intentional, non-therapeutic use of a drug, even once, for its desirable psychological or physiological effects. Misuse is the intentional use, for therapeutic purposes, of a drug by an individual in a way other than prescribed by a health care provider or for whom it was not prescribed. Drug addiction is a cluster of behavioral, cognitive, and physiological phenomena that may include a strong desire to take the drug, difficulties in controlling drug use (e.g., continuing drug use despite harmful consequences, giving a higher priority to drug use than other activities and obligations), and possible tolerance or physical dependence. Even taking benzodiazepines as prescribed may put patients at risk for abuse and misuse of their medication. Abuse and misuse of benzodiazepines may lead to addiction.

Abuse and misuse of benzodiazepines often (but not always) involve the use of doses greater than the maximum recommended dosage and commonly involve concomitant use of other medications, alcohol, and/or illicit substances, which is associated with an increased frequency of serious adverse outcomes, including respiratory depression, overdose, or death. Benzodiazepines are often sought by individuals who abuse drugs and other substances, and by individuals with addictive disorders (see WARNINGS: Abuse, Misuse, and Addiction).

The following adverse reactions have occurred with benzodiazepine abuse and/or misuse: abdominal pain, amnesia, anorexia, anxiety, aggression, ataxia, blurred vision, confusion, depression, disinhibition, disorientation, dizziness, euphoria, impaired concentration and memory, indigestion, irritability, muscle pain, slurred speech, tremors, and vertigo.

The following severe adverse reactions have occurred with benzodiazepine abuse and/or misuse: delirium, paranoia, suicidal ideation and behavior, seizures, coma, breathing difficulty, and death. Death is more often associated with polysubstance use (especially benzodiazepines with other CNS depressants such as opioids and alcohol).

## **Dependence**

### ***Physical Dependence***

Diazepam tablets may produce physical dependence from continued therapy. Physical dependence is a state that develops as a result of physiological adaptation in response to repeated drug use, manifested by withdrawal signs and symptoms after abrupt discontinuation or a significant dose reduction of a drug. Abrupt discontinuation or rapid dosage reduction of benzodiazepines or administration of flumazenil, a benzodiazepine antagonist, may precipitate acute withdrawal reactions, including seizures, which can be life-threatening. Patients at an increased risk of withdrawal adverse reactions after benzodiazepine discontinuation or rapid dosage reduction include those who take higher dosages (i.e., higher and/or more frequent doses), those who have had longer durations of use (see WARNINGS: Dependence and Withdrawal Reactions).

To reduce the risk of withdrawal reactions, use a gradual taper to discontinue diazepam

tablets or reduce the dosage (see DOSAGE and ADMINISTRATION: Discontinuation or Dosage Reduction of Diazepam Tablets and WARNINGS: Dependence and Withdrawal Reactions).

### ***Acute Withdrawal Signs and Symptoms***

Acute withdrawal signs and symptoms associated with benzodiazepines have included abnormal involuntary movements, anxiety, blurred vision, depersonalization, depression, derealization, dizziness, fatigue, gastrointestinal adverse reactions (e.g., nausea, vomiting, diarrhea, weight loss, decreased appetite), headache, hyperacusis, hypertension, irritability, insomnia, memory impairment, muscle pain and stiffness, panic attacks, photophobia, restlessness, tachycardia, and tremor. More severe acute withdrawal signs and symptoms, including life-threatening reactions, have included catatonia, convulsions, delirium tremens, depression, hallucinations, mania, psychosis, seizures, and suicidality.

### ***Protracted Withdrawal Syndrome***

Protracted withdrawal syndrome associated with benzodiazepines is characterized by anxiety, cognitive impairment, depression, insomnia, formication, motor symptoms (e.g., weakness, tremor, muscle twitches), paresthesia, and tinnitus that persists beyond 4 to 6 weeks after initial benzodiazepine withdrawal. Protracted withdrawal symptoms may last weeks to more than 12 months. As a result, there may be difficulty in differentiating withdrawal symptoms from potential re-emergence or continuation of symptoms for which the benzodiazepine was being used; however, little tolerance develops to the amnestic reactions and other cognitive impairments caused by benzodiazepines.

### **Tolerance**

Tolerance to diazepam tablets may develop from continued therapy. Tolerance is a physiological state characterized by a reduced response to a drug after repeated administration (i.e., a higher dose of a drug is required to produce the same effect that was once obtained at a lower dose). Tolerance to the therapeutic effect of diazepam tablets may develop; however, little tolerance develops to the amnestic reactions and other cognitive impairments caused by benzodiazepines.

### **OVERDOSAGE**

Overdosage of benzodiazepines is characterized by central nervous system depression ranging from drowsiness to coma. In mild to moderate cases, symptoms can include drowsiness, confusion, dysarthria, lethargy, hypnotic state, diminished reflexes, ataxia, and hypotonia. Rarely, paradoxical or disinhibitory reactions (including agitation, irritability, impulsivity, violent behavior, confusion, restlessness, excitement, and talkativeness) may occur. In severe overdosage cases, patients may develop respiratory depression and coma. Overdosage of benzodiazepines in combination with other CNS depressants (including alcohol and opioids) may be fatal (see WARNINGS: Dependence and Withdrawal Reactions). Markedly abnormal (lowered or elevated) blood pressure, heart rate, or respiratory rate raise the concern that additional drugs and/or alcohol are involved in the overdosage.

In managing benzodiazepine overdosage, employ general supportive measures, including intravenous fluids and airway management. Flumazenil, a specific

benzodiazepine receptor antagonist, is indicated for the complete or partial reversal of the sedative effects of benzodiazepines in the management of benzodiazepine overdose, can lead to withdrawal and adverse reactions, including seizures, particularly in the context of mixed overdose with drugs that increase seizure risk (e.g., tricyclic and tetracyclic antidepressants) and in patients with long-term benzodiazepine use and physical dependency. The risk of withdrawal seizures with flumazenil use may be increased in patients with epilepsy. Flumazenil is contraindicated in patients who have received a benzodiazepine for control of a potentially life-threatening condition (e.g., status epilepticus). If the decision is made to use flumazenil, it should be used as an adjunct to, not as a substitute for, supportive management of benzodiazepine overdose. See the flumazenil injection Prescribing Information.

Consider contacting the Poison Help line (1-800-222-1222) or a medical toxicologist for additional overdose management recommendations.

## DOSAGE AND ADMINISTRATION

Dosage should be individualized for maximum beneficial effect. While the usual daily dosages given below will meet the needs of most patients, there will be some who may require higher doses. In such cases dosage should be increased cautiously to avoid adverse effects.

<i>ADULTS:</i>	<i>USUAL DAILY DOSE:</i>
<i>Management of Anxiety Disorders and Relief of Symptoms of Anxiety.</i>	Depending upon severity of symptoms—2 mg to 10 mg, 2 to 4 times daily
<i>Symptomatic Relief in Acute Alcohol Withdrawal.</i>	10 mg, 3 or 4 times during the first 24 hours, reducing to 5 mg, 3 or 4 times daily as needed.
<i>Adjunctively for Relief of Skeletal Muscle Spasm.</i>	2 mg to 10 mg, 3 or 4 times daily
<i>Adjunctively in Convulsive Disorders.</i>	2 mg to 10 mg, 2 to 4 times daily
<i>Geriatric Patients, or in the presence of debilitating disease.</i>	2 mg to 2.5 mg, 1 or 2 times daily initially; increase gradually as needed and tolerated.
<i>PEDIATRIC PATIENTS:</i>	
Because of varied responses to CNS-acting drugs, initiate therapy with lowest dose and increase as required. Not for use in pediatric patients under 6 months.	1 mg to 2.5 mg, 3 or 4 times daily initially; increase gradually as needed and tolerated.

## Discontinuation or Dosage Reduction of Diazepam Tablets

To reduce the risk of withdrawal reactions, use a gradual taper to discontinue diazepam tablets or reduce the dosage. If a patient develops withdrawal reactions, consider pausing the taper or increasing the dosage to the previous tapered dosage level. Subsequently decrease the dosage more slowly (see WARNINGS: Dependence and Withdrawal Reactions and DRUG ABUSE AND DEPENDENCE: Dependence).

## HOW SUPPLIED

Diazepam Tablets, USP are available containing 2 mg, 5 mg or 10 mg of diazepam, USP. The 10 mg tablets are green, round, scored tablets debossed with **MYLAN** over **477** on one side and scored on the other side. They are available as follows:

NDC 68788-8462-2 Bottles of 20 tablets  
NDC 68788-8462-3 Bottles of 30 tablets

**Storage: Store at 20° to 25°C (68° to 77°F). [See USP Controlled Room Temperature.]**

**Protect from light.**

Dispense in a tight, light-resistant container as defined in the USP using a child-resistant closure.

**PHARMACIST:** Dispense a Medication Guide with each prescription.

## Medication Guide

### Diazepam Tablets, USP (dye az' e pam)

**What is the most important information I should know about diazepam tablets?**

- **Diazepam tablets are a benzodiazepine medicine. Taking benzodiazepines with opioid medicines, alcohol, or other central nervous system (CNS) depressants (including street drugs) can cause severe drowsiness, breathing problems (respiratory depression), coma and death. Get emergency help right away if any of the following happens:**
  - **Shallow or slowed breathing,**
  - **Breathing stops (which may lead to the heart stopping),**
  - **Excessive sleepiness (sedation).**

**Do not drive or operate heavy machinery until you know how taking diazepam tablets with opioids affect you.**

**What are diazepam tablets?**

- Diazepam tablets are a prescription medicine used:
  - to treat anxiety disorders
  - for the short-term relief of the symptoms of anxiety
  - to relieve the symptoms of alcohol withdrawal including agitation, shakiness (tremor), sudden and severe mental or nervous system changes (delirium tremens) and seeing or hearing things that others do not see or hear (hallucinations)
  - along with other medicines for the relief of muscle spasms
  - along with other medicines to treat seizure disorders.
- **Diazepam tablets are a federal controlled substance (C-IV) because they**

**contain diazepam that can be abused or lead to dependence.** Keep diazepam tablets in a safe place to prevent misuse and abuse. Selling or giving away diazepam tablets may harm others, and is against the law. Tell your healthcare provider if you have abused or been dependent on alcohol, prescription medicines or street drugs.

- It is not known if diazepam tablets are safe and effective in children under 6 months of age.
- It is not known if diazepam tablets are safe and effective for use longer than 4 months.

**Do not take diazepam tablets if you:**

- are allergic to diazepam or any of the ingredients in diazepam tablets. See the end of this Medication Guide for a complete list of ingredients in diazepam tablets.
- have a disease that can cause muscle weakness called myasthenia gravis
- have severe breathing problems (severe respiratory insufficiency)
- have severe liver problems
- have a sleep problem called sleep apnea syndrome

**Before you take diazepam tablets, tell your healthcare provider about all of your medical conditions, including if you:**

- have or have had depression, mood problems, or suicidal thoughts or behavior
- have lung disease or breathing problems
- have liver or kidney problems
- are pregnant or plan to become pregnant.
  - Taking diazepam tablets late in pregnancy may cause your baby to have symptoms of sedation (breathing problems, sluggishness, low muscle tone), and/or withdrawal symptoms (jitteriness, irritability, restlessness, shaking, excessive crying, feeding problems).
  - Tell your healthcare provider right away if you become pregnant or think you are pregnant during treatment with diazepam tablets.
  - There is a pregnancy registry for women who take diazepam tablets during pregnancy. The purpose of the registry is to collect information about the health of you and your baby. If you become pregnant during treatment with diazepam tablets, talk to your healthcare provider about registering with the National Pregnancy Registry for Psychiatric Medications. You can register by calling 1-866-961-2388 or visiting <https://womensmentalhealth.org/pregnancyregistry/>.
- are breastfeeding or plan to breastfeed. Diazepam passes into your breast milk.
  - Talk to your healthcare provider about the best way to feed your baby if you take diazepam tablets.
  - Breastfeeding is not recommended during treatment with diazepam tablets.

**Tell your healthcare provider about all the medicines you take**, including prescription and over-the-counter medicines, vitamins, and herbal supplements. Taking diazepam tablets with certain other medicines can cause side effects or affect how well diazepam tablets or the other medicines work. Do not start or stop other

medicines without talking to your healthcare provider.

### **How should I take diazepam tablets?**

- Take diazepam tablets exactly as your healthcare provider tells you to take them. Your healthcare provider will tell you how many diazepam tablets to take and when to take them.
- Talk to your healthcare provider about slowly stopping diazepam tablets to avoid withdrawal symptoms.
- If you take too many diazepam tablets, call your healthcare provider or go to the nearest hospital emergency room right away.

### **What are the possible side effects of diazepam tablets? Diazepam tablets may cause serious side effects, including:**

- **See “What is the most important information I should know about diazepam tablets?”**
- **Seizures.** Taking diazepam tablets with other medicines used to treat epilepsy can cause an increase in the number or severity of grand mal seizures.
- **Diazepam tablets can make you sleepy or dizzy, and can slow your thinking and motor skills.**
  - Do not drive, operate heavy machinery, or do other dangerous activities until you know how diazepam tablets affect you.
  - **Do not drink alcohol or take other drugs that may make you sleepy or dizzy while taking diazepam tablets without first talking to your healthcare provider.** When taken with alcohol or drugs that cause sleepiness or dizziness, diazepam tablets may make your sleepiness or dizziness much worse.
- **Like other antiepileptic drugs, diazepam tablets may cause suicidal thoughts or actions in a very small number of people, about 1 in 500. Call your healthcare provider right away if you have any of these symptoms, especially if they are new, worse, or worry you:**
  - thoughts about suicide or dying
  - new or worse depression
  - feeling agitated or restless
  - trouble sleeping (insomnia)
  - acting aggressive, being angry, or violent
  - other unusual changes in behavior or mood
  - attempts to commit suicide
  - new or worse anxiety or irritability
  - an extreme increase in activity and talking (mania)
  - new or worse panic attacks
  - acting on dangerous impulses

### **How can I watch for early symptoms of suicidal thoughts and actions?**

- Pay attention to any changes, especially sudden changes, in mood, behaviors, thoughts, or feelings.
- Keep all follow-up visits with your healthcare provider as scheduled.

Call your healthcare provider between visits as needed, especially if you are worried

about symptoms.

Suicidal thoughts or actions can be caused by things other than medicines. If you have suicidal thoughts or actions, your healthcare provider may check for other causes.

**The most common side effects of diazepam tablets include:**

- drowsiness
- muscle weakness
- loss of control of body movements (ataxia)
- fatigue

These are not all the possible side effects of diazepam tablets. **Call your doctor for medical advice about side effects. You may report side effects to FDA at 1-800-FDA-1088.**

You may also report side effects to Mylan at 1-877-446-3679 (1-877-4-INFO-RX).

**How should I store diazepam tablets?**

- Store diazepam tablets in a tightly closed container at room temperature between 20° to 25°C (68° to 77°F). Protect from light.
- Keep diazepam tablets and all medicines out of the reach of children.

**General information about the safe and effective use of diazepam tablets.**

Medicines are sometimes prescribed for purposes other than those listed in a Medication Guide. Do not use diazepam tablets for a condition for which they were not prescribed. Do not give diazepam tablets to other people, even if they have the same symptoms that you have. They may harm them. You can ask your pharmacist or healthcare provider for information about diazepam tablets that is written for health professionals.

**What are the ingredients in diazepam tablets?**

**Active ingredient:** diazepam

**Inactive ingredients:** colloidal silicon dioxide, magnesium stearate, microcrystalline cellulose, pregelatinized starch (corn) and sodium lauryl sulfate. The 5 mg tablets also contain FD&C Yellow No. 6 Aluminum Lake. The 10 mg tablets also contain D&C Yellow No. 10 Aluminum Lake and FD&C Blue No. 1 Aluminum Lake.

**Manufactured for:** Mylan Pharmaceuticals Inc., Morgantown, WV 26505 U.S.A.

**Manufactured by:** Mylan Laboratories Limited, Hyderabad - 500 096, India

For more information, call Mylan at 1-877-446-3679 (1-877-4-INFO-RX).

This Medication Guide has been approved by the U.S. Food and Drug Administration.

Manufactured for:

**Mylan Pharmaceuticals Inc.**

Morgantown, WV 26505 U.S.A.

Manufactured by:

**Mylan Laboratories Limited**

Hyderabad — 500 096, India

75096535

Revised: 4/2023

MXA:DPM:R6mmh/MXA:MG:DPM:R3m/MXA:MG:DPM:R4mh

**Repackaged By: Preferred Pharmaceuticals Inc.**

**PRINCIPAL DISPLAY PANEL - 10 mg**

**NDC 68788-8462**

**Diazepam  
Tablets, USP CIV  
10 mg**

**PHARMACIST: Dispense the accompanying  
Medication Guide to each patient.**

**Rx only**

Each tablet contains  
10 mg of diazepam, USP.

**Usual Dosage:** See accompanying  
prescribing information.

**Keep this and all medication  
out of the reach of children.**

**Store at 20° to 25°C (68° to 77°F).  
[See USP Controlled Room  
Temperature.]**

**Protect from light.**

Manufactured for:  
**Mylan Pharmaceuticals Inc.**  
Morgantown, WV 26505 U.S.A.

Made in India

**Mylan.com**

Dispense in a tight, light-resistant  
container as defined in the USP  
using a child-resistant closure.

Keep container tightly closed.

Code No.: MH/DRUGS/AS/089

**RMXA0477A**

**Repackaged By: Preferred Pharmaceuticals Inc.**

# Diazepam Tablets USP 10mg (CIV)



CAUTION: Federal law PROHIBITS transfer of this drug to any person other than the patient for whom it was prescribed.

Diazepam Tablets USP 10mg (CIV)  
Qty: Ins:  
Lot: Bat:  
Prod# (NDC):

Each tablet contains: Diazepam USP 10mg  
**Pkg Size:** Exp Date: #####



Directions English

Do not drink alcohol while taking this medicine  
Take \_\_\_ tablet(s)



GTIN #####  
SN #####  
EXP #####

Instrucciones Espanol:

No tome bebidas alcoholicas mientras toma esta medicina.  
Toma \_\_\_ tableta(s) cada \_\_\_ horas.  
Uso según lo dirigido por su doctor

Diazepam Tablets USP 10mg (CIV)  
Qty: Ins:  
Lot: Bat:  
Prod# (NDC):

Diazepam Tablets USP 10mg (CIV)  
Qty:  
Insurance NDC:  
Lot: Bat:

Diazepam Tablets USP 10mg (CIV)  
Qty: Ins:  
Lot: Bat:  
Prod# (NDC):

Chart  
Billing  
Patient

## DIAZEPAM

diazepam tablet

### Product Information

<b>Product Type</b>	HUMAN PRESCRIPTION DRUG	<b>Item Code (Source)</b>	NDC:68788-8462(NDC:0378-0477)
<b>Route of Administration</b>	ORAL	<b>DEA Schedule</b>	CIV

### Active Ingredient/Active Moiety

Ingredient Name	Basis of Strength	Strength
<b>DIAZEPAM</b> (UNII: Q3JTX2Q7TU) (DIAZEPAM - UNII:Q3JTX2Q7TU)	DIAZEPAM	10 mg

### Inactive Ingredients

Ingredient Name	Strength
<b>SILICON DIOXIDE</b> (UNII: ETJ7Z6XBU4)	
<b>MAGNESIUM STEARATE</b> (UNII: 70097M6I30)	
<b>MICROCRYSTALLINE CELLULOSE</b> (UNII: OP1R32D61U)	
<b>STARCH, CORN</b> (UNII: O8232NY3S)	
<b>SODIUM LAURYL SULFATE</b> (UNII: 368GB5141J)	
<b>FD&amp;C BLUE NO. 1</b> (UNII: H3R47K3TBD)	
<b>D&amp;C YELLOW NO. 10</b> (UNII: 35SW5USQ3G)	

### Product Characteristics

<b>Color</b>	GREEN	<b>Score</b>	2 pieces
<b>Shape</b>	ROUND	<b>Size</b>	8mm
<b>Flavor</b>		<b>Imprint Code</b>	MYLAN;477
<b>Contains</b>			

### Packaging

#	Item Code	Package Description	Marketing Start Date	Marketing End Date
1	NDC:68788-8462-2	20 in 1 BOTTLE, PLASTIC; Type 0: Not a Combination Product	06/21/2023	
2	NDC:68788-8462-3	30 in 1 BOTTLE, PLASTIC; Type 0: Not a Combination Product	06/21/2023	

Marketing Information			
Marketing Category	Application Number or Monograph Citation	Marketing Start Date	Marketing End Date
ANDA	ANDA070325	06/21/2023	

**Labeler** - Preferred Pharmaceuticals Inc. (791119022)

**Registrant** - Preferred Pharmaceuticals Inc. (791119022)

Establishment			
Name	Address	ID/FEI	Business Operations
Preferred Pharmaceuticals Inc.		791119022	REPACK(68788-8462)

Revised: 4/2026

Preferred Pharmaceuticals Inc.