

PHYTON THERAPY CLEANSING BAR- allantoin soap

Nature In

Disclaimer: Most OTC drugs are not reviewed and approved by FDA, however they may be marketed if they comply with applicable regulations and policies. FDA has not evaluated whether this product complies.

ACTIVE INGREDIENT

Active Ingredient: Allantoin 1.30%

INACTIVE INGREDIENT

Inactive Ingredients: palm kernel, silver colloid, thuja oil, fishcollagen, wheat powder, olive oil, CDE, purified aqua(water), Moringa powder

PURPOSE

Purpose: Skin Protectant

WARNINGS

Warnings: 1. If any one of following symptoms occurs when using cosmetics, stop using it and consult a dermatologist. 1) red spot, swelling, itching, stimulus 2) symptoms mentioned above are caused by sunlight. 2. Do not apply on skin where there is wound, eczema, or irritation. 3. Beware of the product getting into eye. 4. Do not use for the purpose other than indicated. 5. Storage and cautions for handling
1) keep out of reach of children. 2) keep away from high or low temperature and direct sunlight.

KEEP OUT OF REACH OF CHILDREN

KEEP OUT OF REACH OF CHILDREN

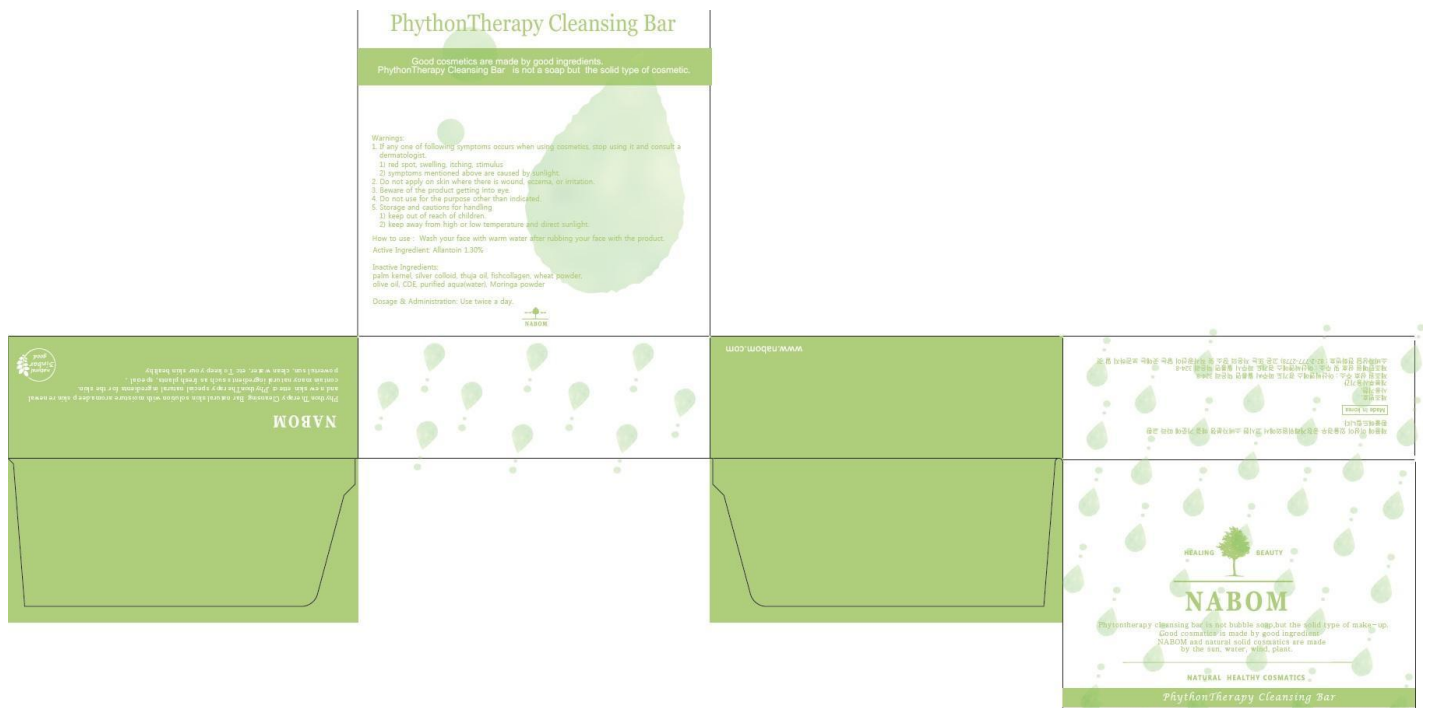
INDICATIONS & USAGE

Indications & Usage: Wash your face with warm water after rubbing your face with the product.

DOSAGE & ADMINISTRATION

Dosage & Administration: Use twice a day.

PACKAGE LABEL.PRINCIPAL DISPLAY PANEL



PHYTON THERAPY CLEANSING BAR

allantoin soap

Product Information

| | | | |
|--------------------------------|----------------|---------------------------|---------------|
| Product Type | HUMAN OTC DRUG | Item Code (Source) | NDC:69694-010 |
| Route of Administration | TOPICAL | | |

Active Ingredient/Active Moiety

| Ingredient Name | Basis of Strength | Strength |
|--|-------------------|-----------------|
| Allantoin (UNII: 344S277G0Z) (ALLANTOIN - UNII:344S277G0Z) | Allanto in | 1.30 g in 100 g |

Inactive Ingredients

| Ingredient Name | Strength |
|------------------------------------|----------|
| PALM KERNEL OIL (UNII: B0S90M0233) | |

Packaging

| # | Item Code | Package Description | Marketing Start Date | Marketing End Date |
|---|------------------|---------------------|----------------------|--------------------|
| 1 | NDC:69694-010-01 | 100 g in 1 CARTON | | |

Marketing Information

| Marketing Category | Application Number or Monograph Citation | Marketing Start Date | Marketing End Date |
|----------------------|--|----------------------|--------------------|
| OTC mono graph final | part347 | 03/01/2015 | |

Labeler - Nature In (689213006)

Registrant - Nature In (689213006)

Establishment

| Name | Address | ID/FEI | Business Operations |
|-----------|---------|-----------|------------------------|
| Nature In | | 689213006 | manufacture(69694-010) |

Revised: 3/2015

Nature In