

BENAZEPRIL HYDROCHLORIDE- benazepril hydrochloride tablet, coated NuCare Pharmaceuticals, Inc.

HIGHLIGHTS OF PRESCRIBING INFORMATION

These highlights do not include all the information needed to use BENAZEPRIL HYDROCHLORIDE TABLETS safely and effectively. See full prescribing information for use BENAZEPRIL HYDROCHLORIDE TABLETS.

BENAZEPRIL HYDROCHLORIDE tablets, film coated for oral use

Initial U.S. Approval: 1991

WARNING-FETAL TOXICITY

See full prescribing information for complete boxed warning.

When pregnancy is detected, discontinue benazepril hydrochloride tablets as soon as possible. (5.1)

Drugs that act directly on the renin-angiotensin system can cause injury and death to the developing fetus. (5.1)

INDICATIONS AND USAGE

Benazepril hydrochloride is an angiotensin-converting enzyme (ACE) inhibitor indicated for the treatment of hypertension, to lower blood pressure. Lowering blood pressure reduces the risk of fatal and nonfatal cardiovascular events, primarily strokes and myocardial infarctions. (1)

DOSAGE AND ADMINISTRATION

- Adult Patients: Initiate with 10 mg once daily (or 5 mg if patient is on diuretic). Titrate to 40 mg daily based on blood pressure response. (2.1)
- Pediatric patients age 6 years and above with glomerular filtration rate (GFR) >30 mL/min/1.73 m²: Initiate with 0.2 mg/kg once daily. Maximum dose is 0.6 mg/kg once daily.
- Renal Impairment: Initiate with 5 mg once daily in patients with GFR <30 mL/min/1.73 m² (serum creatinine >3 mg/dL) (2.3)

DOSAGE FORMS AND STRENGTHS

- Tablets: 5 mg, 10 mg, 20 mg, 40 mg

CONTRAINDICATIONS

- Angioedema or history of hereditary or idiopathic angioedema (4)
- Hypersensitivity (4)
- Co-administration with aliskiren in patients with diabetes (4)

WARNINGS AND PRECAUTIONS

- Angioedema: Discontinue benazepril hydrochloride and treat appropriately. (5.2)
- Monitor renal function periodically. (5.3)
- Monitor blood pressure after initiation. (5.4)
- Hyperkalemia: Monitor serum potassium periodically. (5.5)
- Hepatic toxicity: Monitor for jaundice or signs of liver failure. (5.6)

ADVERSE REACTIONS

The most common adverse reactions leading to discontinuation were headache (0.6%) (5.6) and cough (5.7)

To report **SUSPECTED ADVERSE REACTIONS**, contact Solco Healthcare US, LLC at 1-866-257-2597 or FDA at 1-800-FDA-1088 or www.fda.gov/medwatch.

-----**DRUG INTERACTIONS**-----

- Diuretics: Excessive drop in blood pressure (7.1)
- Antidiabetics: Increased risk of hypoglycaemia (7.2)
- NSAIDs: Increased risk of renal impairment and loss of antihypertensive efficacy (7.3)
- Dual inhibition of the renin-angiotensin system: Increased risk of renal impairment, hypotension and hyperkalemia (7.4)
- Lithium: Symptoms of lithium toxicity (7.5)

-----**USE IN SPECIFIC POPULATIONS**-----

- Pregnancy: Discontinue drug if pregnancy is detected (5.1, 8.1)
- Pediatrics: Safety and effectiveness have not been established in patients < 6 years of age or with GFR < 30 mL/min/1.73 m² (8.4)
- Race: Less antihypertensive effect in blacks as monotherapy (8.6)

See 17 for **PATIENT COUNSELING INFORMATION**.

Revised: 12/2015

FULL PRESCRIBING INFORMATION: CONTENTS*

1 INDICATIONS AND USAGE

2 DOSAGE AND ADMINISTRATION

2.1 Recommended Dosage

2.2 Dose Adjustment for Renal Impairment

2.3 Preparation of Suspension (for 150 mL of a 2 mg/mL Suspension)

3 DOSAGE FORMS AND STRENGTHS

4 CONTRAINDICATIONS

5 WARNINGS AND PRECAUTIONS

5.1 Fetal Toxicity

5.2 Angioedema and Anaphylactoid Reactions

5.3 Impaired Renal Function

5.4 Hypotension

5.5 Hyperkalemia

5.6 Hepatic Failure

6 ADVERSE REACTIONS

7 DRUG INTERACTIONS

7.1 Diuretics

7.2 Antidiabetics

7.3 Non-Steroidal Anti-Inflammatory Agents including Selective Cyclooxygenase-2 Inhibitors (COX-2 Inhibitors)

7.4 Dual Blockade of the Renin-Angiotensin System (RAS)

7.5 Mammalian Target of Rapamycin (mTOR) Inhibitors

7.6 Lithium

7.7 Gold

8 USE IN SPECIFIC POPULATIONS

8.1 Pregnancy

8.3 Nursing Mothers

8.4 Pediatric Use

8.5 Geriatric Use

8.6 Race

8.7 Renal Impairment

10 OVERDOSAGE

11 DESCRIPTION

12 CLINICAL PHARMACOLOGY

12.1 Mechanism of Action

12.2 Pharmacodynamics

12.3 Pharmacokinetics

13 NONCLINICAL TOXICOLOGY

13.1 Carcinogenesis, Mutagenesis, Impairment of Fertility

14 CLINICAL STUDIES

16 HOW SUPPLIED/STORAGE AND HANDLING

17 PATIENT COUNSELING INFORMATION

* Sections or subsections omitted from the full prescribing information are not listed.

FULL PRESCRIBING INFORMATION

WARNING: FETAL TOXICITY

When pregnancy is detected, discontinue benazepril hydrochloride tablets as soon as possible. (5.1)

Drugs that act directly on the renin-angiotensin system can cause injury and death to the developing fetus. [see Warnings and Precautions (5.1)]

1 INDICATIONS AND USAGE

Benazepril hydrochloride tablets are indicated for the treatment of hypertension, to lower blood pressure. Lowering blood pressure reduces the risk of fatal and nonfatal cardiovascular events, primarily strokes and myocardial infarctions. These benefits have been seen in controlled trials of antihypertensive drugs from a wide variety of pharmacologic classes including the class to which this drug principally belongs.

Control of high blood pressure should be part of comprehensive cardiovascular risk management, including, as appropriate, lipid control, diabetes management, antithrombotic therapy, smoking cessation, exercise, and limited sodium intake. Many patients will require more than one drug to achieve blood pressure goals. For specific advice on goals and management, see published guidelines, such as those of the National High Blood Pressure Education Program's Joint National Committee on Prevention, Detection, Evaluation, and Treatment of High Blood Pressure (JNC).

Numerous antihypertensive drugs, from a variety of pharmacologic classes and with different mechanisms of action, have been shown in randomized controlled trials to reduce cardiovascular morbidity and mortality, and it can be concluded that it is blood pressure reduction, and not some other pharmacologic property of the drugs, that is largely responsible for those benefits. The largest and most consistent cardiovascular

outcome benefit has been a reduction in the risk of stroke, but reductions in myocardial infarction and cardiovascular mortality also have been seen regularly.

Elevated systolic or diastolic pressure causes increased cardiovascular risk, and the absolute risk increase per mmHg is greater at higher blood pressures, so that even modest reductions of severe hypertension can provide substantial benefit. Relative risk reduction from blood pressure reduction is similar across populations with varying absolute risk, so the absolute benefit is greater in patients who are at higher risk independent of their hypertension (for example, patients with diabetes or hyperlipidemia), and such patients would be expected to benefit from more aggressive treatment to a lower blood pressure goal.

Some antihypertensive drugs have smaller blood pressure effects (as monotherapy) in black patients, and many antihypertensive drugs have additional approved indications and effects (e.g., on angina, heart failure, or diabetic kidney disease). These considerations may guide selection of therapy.

It may be used alone or in combination with thiazide diuretics.

2 DOSAGE AND ADMINISTRATION

2.1 Recommended Dosage

ADULTS

The recommended initial dose for patients not receiving a diuretic is 10 mg once a day. The usual maintenance dosage range is 20 mg to 40 mg per day administered as a single dose or in two equally divided doses. A dose of 80 mg gives an increased response, but experience with this dose is limited. The divided regimen was more effective in controlling trough (pre-dosing) blood pressure than the same dose given as a once-daily regimen.

Use with diuretics in adults

The recommended starting dose of benazepril hydrochloride tablets in a patient on a diuretic is 5 mg once daily. If blood pressure is not controlled with benazepril hydrochloride alone, a low dose of diuretic may be added.

PEDIATRIC PATIENTS 6 YEARS OF AGE AND OLDER

The recommended starting dose for pediatric patients is 0.2 mg/kg once per day. Titrate as needed to 0.6 mg/kg once per day. Doses above 0.6 mg/kg (or in excess of 40 mg daily) have not been studied in pediatric patients.

Benazepril hydrochloride tablets are not recommended in pediatric patients less than 6 years of age or in pediatric patients with GFR less than 30 mL/min/1.73 m² [see *Use in Specific Populations* (8.4)].

2.2 Dose Adjustment for Renal Impairment

For adults with a GFR <30 mL/min/1.73 m² (serum creatinine >3 mg/dL), the recommended initial dose is 5 mg benazepril hydrochloride tablets once daily. Dosage may be titrated upward until blood pressure is controlled or to a maximum total daily dose of 40 mg. Benazepril hydrochloride tablets can also worsen renal function [see

Warnings and Precautions (5.3)].

2.3 Preparation of Suspension (for 150 mL of a 2 mg/mL Suspension)

Add 75 mL of Ora-Plus®* oral suspending vehicle to an amber polyethylene terephthalate (PET) bottle containing fifteen benazepril hydrochloride 20 mg tablets, and shake for at least two minutes. Allow the suspension to stand for a minimum of 1 hour. After the standing time, shake the suspension for a minimum of one additional minute. Add 75 mL of Ora-Sweet®* oral syrup vehicle to the bottle and shake the suspension to disperse the ingredients. The suspension should be refrigerated at 2-8°C (36-46°F) and can be stored for up to 30 days in the PET bottle with a child-resistant screw-cap closure. Shake the suspension before each use.

*Ora-Plus® and Ora-Sweet® are registered trademarks of Paddock Laboratories, Inc. Ora Plus® contains carrageenan, citric acid, methylparaben, microcrystalline cellulose, carboxymethylcellulose sodium, potassium sorbate, simethicone, sodium phosphate monobasic, xanthan gum, and water. Ora-Sweet® contains citric acid, berry citrus flavorant, glycerin, methylparaben, potassium sorbate, sodium phosphate monobasic, sorbitol, sucrose, and water.

3 DOSAGE FORMS AND STRENGTHS

Tablets: 5 mg, 10 mg, 20 mg, and 40 mg

- Each 5 mg tablet is white with “S” on one side and “341” on the other
- Each 10 mg tablet is red with “S” on one side and “342” on the other
- Each 20 mg tablet is grey with “S” on one side and “343” on the other
- Each 40 mg tablet is blue with “S” on one side and “344” on the other

4 CONTRAINDICATIONS

Benazepril hydrochloride tablets are contraindicated in patients:

- who are hypersensitive to benazapril or to any other ACE inhibitor
- with a history of angioedema with or without previous ACE inhibitor treatment

Do not co-administer aliskiren with benazepril hydrochloride tablets in patients with diabetes *[see Drug Interactions (7.4)]* .

5 WARNINGS AND PRECAUTIONS

5.1 Fetal Toxicity

PREGNANCY CATEGORY D

Use of drugs that act on the renin-angiotensin system during the second and third trimesters of pregnancy reduces fetal renal function and increases fetal and neonatal morbidity and death. Resulting oligohydramnios can be associated with fetal lung

hypoplasia and skeletal deformations. Potential neonatal adverse effects include skull hypoplasia, anuria, hypotension, renal failure, and death. When pregnancy is detected, discontinue benazepril hydrochloride tablets as soon as possible [see *Use in Specific Populations* (8.1)] .

5.2 Angioedema and Anaphylactoid Reactions

Angioedema

Head and Neck Angioedema

Angioedema of the face, extremities, lips, tongue, glottis, and/or larynx including some fatal reactions, have occurred in patients treated with benazepril hydrochloride. Patients with involvement of the tongue, glottis or larynx are likely to experience airway obstruction, especially those with a history of airway surgery. Benazepril hydrochloride should be promptly discontinued and appropriate therapy and monitoring should be provided until complete and sustained resolution of signs and symptoms of angioedema has occurred.

Patients with a history of angioedema unrelated to ACE inhibitor therapy may be at increased risk of angioedema while receiving an ACE inhibitor [see *Contraindications* (4)] . ACE inhibitors have been associated with a higher rate of angioedema in Black than in non-Black patients.

Patients receiving coadministration of ACE inhibitor and mTOR (mammalian target of rapamycin) inhibitor (e.g., temsirolimus, sirolimus, everolimus) therapy may be at increased risk for angioedema.

Intestinal Angioedema

Intestinal angioedema has occurred in patients treated with ACE inhibitors. These patients presented with abdominal pain (with or without nausea or vomiting); in some cases there was no prior history of facial angioedema and C-1 esterase levels were normal. In some cases, the angioedema was diagnosed by procedures including abdominal CT scan or ultrasound, or at surgery, and symptoms resolved after stopping the ACE inhibitor.

Anaphylactoid Reactions

Anaphylactoid Reactions During Desensitization

Two patients undergoing desensitizing treatment with hymenoptera venom while receiving ACE inhibitors sustained life-threatening anaphylactoid reactions.

Anaphylactoid Reactions During Dialysis

Sudden and potentially life threatening anaphylactoid reactions have occurred in some patients dialyzed with high-flux membranes and treated concomitantly with an ACE inhibitor. In such patients, dialysis must be stopped immediately, and aggressive therapy for anaphylactoid reactions must be initiated. Symptoms have not been relieved by antihistamines in these situations. In these patients, consideration should be given to using a different type of dialysis membrane or a different class of antihypertensive agent. Anaphylactoid reactions have also been reported in patients undergoing low-density lipoprotein apheresis with dextran sulfate absorption.

5.3 Impaired Renal Function

Monitor renal function periodically in patients treated with benazepril hydrochloride. Changes in renal function, including acute renal failure, can be caused by drugs that inhibit the renin-angiotensin system. Patients whose renal function may depend on the activity of the renin-angiotensin system (e.g., patients with renal artery stenosis, chronic kidney disease, severe congestive heart failure, post-myocardial infarction, or volume depletion) may be at particular risk of developing acute renal failure on benazepril hydrochloride. Consider withholding or discontinuing therapy in patients who develop a clinically significant decrease in renal function on benazepril hydrochloride.

5.4 Hypotension

Benazepril hydrochloride can cause symptomatic hypotension, sometimes complicated by oliguria, progressive azotemia acute renal failure or death. Patients at risk of excessive hypotension include those with the following conditions or characteristics: heart failure with systolic blood pressure below 100 mmHg, ischemic heart disease, cerebrovascular disease, hyponatremia, high dose diuretic therapy, renal dialysis, or severe volume and/or salt depletion of any etiology.

In such patients, follow closely for the first 2 weeks of treatment and whenever the dose of benazepril or diuretic is increased. Avoid use of benazepril hydrochloride in patients who are hemodynamically unstable after acute MI.

Surgery/Anesthesia

In patients undergoing major surgery or during anesthesia with agents that produce hypotension, benazepril hydrochloride may block angiotensin II formation secondary to compensatory renin release. If hypotension occurs, correct by volume expansion.

5.5 Hyperkalemia

Serum potassium should be monitored periodically in patients receiving benazepril hydrochloride. Drugs that inhibit the renin angiotensin system can cause hyperkalemia. Risk factors for the development of hyperkalemia include renal insufficiency, diabetes mellitus, and the concomitant use of potassium-sparing diuretics, potassium supplements and/or potassium-containing salt substitutes [see *Drug Interactions (7.1)*].

5.6 Hepatic Failure

ACE inhibitors have been associated with a syndrome that starts with cholestatic jaundice and progresses to fulminant hepatic necrosis and (sometimes) death. The mechanism of this syndrome is not understood. Patients receiving ACE inhibitors who develop jaundice or marked elevations of hepatic enzymes should discontinue the ACE inhibitor and receive appropriate medical follow-up.

6 ADVERSE REACTIONS

Because clinical trials are conducted under widely varying conditions, adverse reaction rates observed in the clinical studies of a drug cannot be directly compared to rates in the clinical studies of another drug and may not reflect the rates observed in practice.

Benazepril hydrochloride has been evaluated for safety in over 6000 patients with hypertension; over 700 of these patients were treated for at least one year. The overall

incidence of reported adverse events was similar in benazepril hydrochloride and placebo patients.

The reported side effects were generally mild and transient, and there was no relation between side effects and age, duration of therapy, or total dosage within the range of 2 to 80 mg.

Discontinuation of therapy because of a side effect was required in approximately 5% of U.S. patients treated with benazepril hydrochloride and in 3% of patients treated with placebo. The most common reasons for discontinuation were headache (0.6%) and cough (0.5%)

Adverse reactions seen in at least 1% greater frequency in patients treated with benazepril hydrochloride than placebo were headache (6% vs 4%), dizziness (4% vs 2%), somnolence (2% vs 0%) and postural dizziness (2% vs 0%).

Adverse reactions reported in controlled clinical trials (less than 1% more on benazepril than on placebo), and rarer events seen in post-marketing experience, include the following (in some, a causal relationship to drug use is uncertain):

Dermatologic: Stevens-Johnson syndrome, pemphigus, apparent hypersensitivity reactions (manifested by dermatitis, pruritus, or rash), photosensitivity, and flushing.

Gastrointestinal: Nausea, pancreatitis, constipation, gastritis, vomiting, and melena.

Hematologic: Thrombocytopenia and hemolytic anemia.

Neurologic/Psychiatric: Anxiety, decreased libido, hypertonia, insomnia, nervousness, and paresthesia

Other: Fatigue, asthma, bronchitis, dyspnea, sinusitis, urinary tract infection, frequent urination, infection, arthritis, impotence, alopecia, arthralgia, myalgia, asthenia, sweating.

Laboratory Abnormalities:

Elevations of uric acid, blood glucose, serum bilirubin, and liver enzymes [see *Adverse Reactions (5)*] have been reported, as have incidents of hyponatremia, electrocardiographic changes, eosinophilia, and proteinuria

7 DRUG INTERACTIONS

7.1 Diuretics

Hypotension

Patients on diuretics, especially those in whom diuretic therapy was recently instituted, may occasionally experience an excessive reduction of blood pressure after initiation of therapy with benazepril hydrochloride. The possibility of hypotensive effects with benazepril hydrochloride can be minimized by either discontinuing or decreasing the dose of diuretic prior to initiation of treatment with benazepril hydrochloride [see *Dosage and Administration (2.1)*].

Hyperkalemia

otassium-sparing diuretics (spironolactone, amiloride, triamterene, and others) can increase the risk of hyperkalemia. Therefore, if concomitant use of such agents is

indicated, monitor the patient's serum potassium frequently. Benazepril hydrochloride attenuates potassium loss caused by thiazide-type diuretics.

7.2 Antidiabetics

Concomitant administration of benazepril hydrochloride and antidiabetic medicines (insulins, oral hypoglycemic agents) may increase the risk of hypoglycemia.

7.3 Non-Steroidal Anti-Inflammatory Agents including Selective Cyclooxygenase-2 Inhibitors (COX-2 Inhibitors)

In patients who are elderly, volume-depleted (including those on diuretic therapy), or with compromised renal function, co-administration of NSAIDs, including selective COX-2 inhibitors, with ACE inhibitors, including benazepril, may result in deterioration of renal function, including possible acute renal failure. These effects are usually reversible. Monitor renal function periodically in patients receiving benazepril and NSAID therapy.

The antihypertensive effect of ACE inhibitors, including benazepril, may be attenuated by NSAIDs.

7.4 Dual Blockade of the Renin-Angiotensin System (RAS)

Dual Blockade of the RAS with angiotensin receptor blockers, ACE inhibitors, or aliskiren is associated with increased risks of hypotension, hyperkalemia, and changes in renal function (including acute renal failure) compared to monotherapy. Most patients receiving the combination of two RAS inhibitors do not obtain any additional benefit compared to monotherapy. In general, avoid combined use of RAS inhibitors. Closely monitor blood pressure, renal function and electrolytes in patients on benazepril hydrochloride and other agents that affect the RAS.

Do not co-administer aliskiren with benazepril hydrochloride in patients with diabetes. Avoid use of aliskiren with benazepril hydrochloride in patients with renal impairment (GFR <60 ml/min).

7.5 Mammalian Target of Rapamycin (mTOR) Inhibitors

Patients receiving coadministration of ACE inhibitor and mTOR inhibitor (e.g., temsirolimus, sirolimus, everolimus) therapy may be at increased risk for angioedema. Monitor for signs of angioedema [*see Warnings and Precautions (5.2)*] .

7.6 Lithium

Lithium toxicity has been reported in patients receiving lithium concomitantly with benazepril hydrochloride. Lithium toxicity was usually reversible upon discontinuation of lithium or benazepril hydrochloride. Monitor serum lithium levels during concurrent use.

7.7 Gold

Nitritoid reactions (symptoms include facial flushing, nausea, vomiting and hypotension) have been reported rarely in patients on therapy with injectable gold (sodium aurothiomalate) and concomitant ACE inhibitor therapy.

8 USE IN SPECIFIC POPULATIONS

8.1 Pregnancy

Pregnancy Category D

Use of drugs that act on the renin-angiotensin system during the second and third trimesters of pregnancy reduces fetal renal function and increases fetal and neonatal morbidity and death. Resulting oligohydramnios can be associated with fetal lung hypoplasia and skeletal deformations. Potential neonatal adverse effects include skull hypoplasia, anuria, hypotension, renal failure, and death. When pregnancy is detected, discontinue benazepril hydrochloride as soon as possible. These adverse outcomes are usually associated with use of these drugs in the second and third trimester of pregnancy. Most epidemiologic studies examining fetal abnormalities after exposure to antihypertensive use in the first trimester have not distinguished drugs affecting the renin-angiotensin system from other antihypertensive agents. Appropriate management of maternal hypertension during pregnancy is important to optimize outcomes for both mother and fetus.

In the unusual case that there is no appropriate alternative to therapy with drugs affecting the renin-angiotensin system for a particular patient, apprise the mother of the potential risk to the fetus. Perform serial ultrasound examinations to assess the intra-amniotic environment. If oligohydramnios is observed, discontinue benazepril hydrochloride, unless it is considered lifesaving for the mother. Fetal testing may be appropriate, based on the week of pregnancy. Patients and physicians should be aware, however, that oligohydramnios may not appear until after the fetus has sustained irreversible injury. Closely observe infants with histories of in utero exposure to benazepril hydrochloride for hypotension, oliguria, and hyperkalemia [see *Use in Specific Populations* (8.4)].

8.3 Nursing Mothers

Minimal amounts of unchanged benazepril and of benazeprilat are excreted into the breast milk of lactating women treated with benazepril. A newborn child ingesting entirely breast milk would receive less than 0.1% of the mg/kg maternal dose of benazepril and benazeprilat.

8.4 Pediatric Use

The antihypertensive effects of benazepril hydrochloride have been evaluated in a double-blind study in pediatric patients 7 to 16 years of age [see Clinical Pharmacology (12.3)]. The pharmacokinetics of benazepril hydrochloride have been evaluated in pediatric patients 6 to 16 years of age [see Clinical Pharmacology (12.3)]. Infants below the age of 1 year should not be given benazepril hydrochloride because of the risk of effects on kidney development.

Safety and effectiveness of benazepril hydrochloride have not been established in pediatric patients less than 6 years of age or in children with glomerular filtration rate <30 mL/min/1.73m² [see Dosage and Administration (2.1) and Clinical Pharmacology 12.3)].

Neonates with a history of in utero exposure to benazepril hydrochloride:

If oliguria or hypotension occurs, direct attention toward support of blood pressure and renal perfusion. Exchange transfusions or dialysis may be required as a means of reversing hypotension and/or substituting for disordered renal function. Benazepril, which crosses the placenta, can theoretically be removed from the neonatal circulation

by these means; there are occasional reports of benefit from these maneuvers with another ACE inhibitor, but experience is limited.

8.5 Geriatric Use

Of the total number of patients who received benazepril in U.S. clinical studies of benazepril hydrochloride, 18% were 65 or older while 2% were 75 or older. No overall differences in effectiveness or safety were observed between these patients and younger patients, and other reported clinical experience has not identified differences in responses between the elderly and younger patients, but greater sensitivity of some older individuals cannot be ruled out.

Benazepril and benazeprilat are substantially excreted by the kidney. Because elderly patients are more likely to have decreased renal function, care should be taken in dose selection, and it may be useful to monitor renal function [see *Dosage and Administration* (2.2)] .

8.6 Race

ACE inhibitors, including benazepril hydrochloride, as monotherapy, have an effect on blood pressure that is less in black patients than in non-blacks.

8.7 Renal Impairment

Dose adjustment of benazepril hydrochloride is required in patients undergoing hemodialysis or whose creatinine clearance is ≤ 30 mL/min. No dose adjustment of benazepril hydrochloride is required in patients with creatinine clearance >30 mL/min [see *Dosage and Administration* (2.2) and *Clinical Pharmacology* (12.3)] .

10 OVERDOSAGE

Single oral doses of 3 g/kg benazepril were associated with significant lethality in mice. Rats, however, tolerated single oral doses of up to 6 g/kg. Reduced activity was seen at 1 g/kg in mice and at 5 g/kg in rats. Human overdoses of benazepril have not been reported, but the most common manifestation of human benazepril overdosage is likely to be hypotension, for which the usual treatment would be intravenous infusion of normal saline solution. Hypotension can be associated with electrolyte disturbances and renal failure.

Benazepril is only slightly dialyzable, but consider dialysis to support patients with severely impaired renal function [see *Warnings and Precautions* (5.3)].

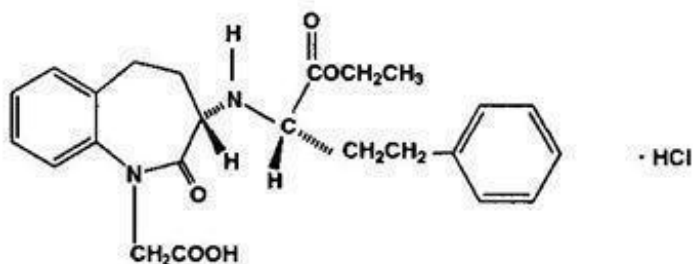
If ingestion is recent, consider activated charcoal. Consider gastric decontamination (e.g., vomiting, gastric lavage) in the early period after ingestion.

Monitor for blood pressure and clinical symptoms. Supportive management should be employed to ensure adequate hydration and to maintain systemic blood pressure.

In the case of marked hypotension, infuse physiological saline solution; as needed, consider vasopressors (e.g., catecholamines i.v.).

11 DESCRIPTION

Benazepril hydrochloride is a white to off-white crystalline powder, soluble (>100 mg/mL) in water, in ethanol, and in methanol. Its chemical name is benazepril 3-[[1-(ethoxy-carbonyl)-3-phenyl-(1S)-propyl]amino]-2,3,4,5-tetrahydro-2-oxo-1 H-1-(3S)-benzazepine-1-acetic acid monohydrochloride; its structural formula is



Its empirical formula is $C_{24}H_{28}N_2O_5 \cdot HCl$, and its molecular weight is 460.96.

Benazeprilat, the active metabolite of benazepril, is a non-sulphydryl angiotensin-converting enzyme inhibitor.

Benazepril hydrochloride is supplied as film-coated tablets containing 5 mg, 10 mg, 20 mg, and 40 mg of benazepril hydrochloride for oral administration. The inactive ingredients are carnauba wax, colloidal silicon dioxide, crospovidone, hypromellose, lactose monohydrate, magnesium stearate, microcrystalline cellulose, polydextrose, polyethylene glycol, pregelatinized starch, titanium dioxide, and triacetin. The 10 mg tablet also contains FD&C Red No. 40 aluminum lake. The 20 mg tablet also contains black iron oxide and yellow iron oxide. The 40 mg tablet also contains FD&C Blue No. 2 aluminum lake. Benazepril hydrochloride tablets USP, 5 mg, 10 mg, 20 mg and 40 mg meet USP Dissolution Test 2.

12 CLINICAL PHARMACOLOGY

12.1 Mechanism of Action

Benazepril and benazeprilat inhibit angiotensin-converting enzyme (ACE) in human subjects and animals. Benazeprilat has much greater ACE inhibitory activity than does benazepril. ACE is a peptidyl dipeptidase that catalyzes the conversion of angiotensin I to the vasoconstrictor substance, angiotensin II. Angiotensin II also stimulates aldosterone secretion by the adrenal cortex.

Inhibition of ACE results in decreased plasma angiotensin II, which leads to decreased vasopressor activity and to decreased aldosterone secretion. The latter decrease may result in a small increase of serum potassium.

Removal of angiotensin II negative feedback on renin secretion leads to increased plasma renin activity. In animal studies, benazepril had no inhibitory effect on the vasopressor response to angiotensin II and did not interfere with the hemodynamic effects of the autonomic neurotransmitters acetylcholine, epinephrine, and norepinephrine.

ACE is identical to kininase, an enzyme that degrades bradykinin. Whether increased levels of bradykinin, a potent vasodepressor peptide, play a role in the therapeutic effects of benazepril hydrochloride remains to be elucidated.

While the mechanism through which benazepril lowers blood pressure is believed to be primarily suppression of the renin-angiotensin-aldosterone system, benazepril has an antihypertensive effect even in patients with low-renin hypertension.

12.2 Pharmacodynamics

Single and multiple doses of 10 mg or more of benazepril hydrochloride cause inhibition of plasma ACE activity by at least 80%-90% for at least 24 hours after dosing. Pressor responses to exogenous angiotensin I were inhibited by 60%-90% (up to 4 hours post-dose) at the 10-mg dose.

Drug interactions

Benazepril hydrochloride has been used concomitantly with beta-adrenergic-blocking agents, calcium-channel-blocking agents, diuretics, digoxin, and hydralazine, without evidence of clinically important adverse interactions. Benazepril, like other ACE inhibitors, has had less than additive effects with beta-adrenergic blockers, presumably because both drugs lower blood pressure by inhibiting parts of the renin-angiotensin system

12.3 Pharmacokinetics

The pharmacokinetics of benazepril are approximately dose-proportional within the dosage range of 10-80 mg.

Following oral administration of benazepril hydrochloride, peak plasma concentrations of benazepril, and its active metabolite benazeprilat are reached within 0.5-1.0 hours and 1-2 hours, respectively. While the bioavailability of benazepril is not affected by food, time to peak plasma concentrations of benazeprilat is delayed to 2 - 4 hours.

The serum protein binding of benazepril is about 96.7% and that of benazeprilat about 95.3%, as measured by equilibrium dialysis; on the basis of in vitro studies, the degree of protein binding should be unaffected by age, hepatic dysfunction, or concentration (over the concentration range of 0.24-23.6 $\mu\text{mol/L}$).

Benazepril is almost completely metabolized to benazeprilat by cleavage of the ester group (primarily in liver). Both benazepril and benazeprilat undergo glucuronidation.

Benazepril and benazeprilat are cleared predominantly by renal excretion. About 37% of an orally administered dose was recovered in urine as benazeprilat (20%), benazeprilat glucuronide (8%), benazepril glucuronide (4%) and as trace amounts of benazepril. Nonrenal (i.e., biliary) excretion accounts for approximately 11%-12% of benazeprilat excretion.. The effective half-life of benazeprilat following once daily repeat oral administration of benazepril hydrochloride is 10-11 hours. Thus, steady-state concentrations of benazeprilat should be reached after 2 or 3 doses of benazepril hydrochloride given once daily.

Accumulation ratio based on AUC of benazeprilat was 1.19 following once daily administration.

Specific Populations

Renal impairment

The pharmacokinetics of/ systemic exposure to benazepril and benazeprilat in patients with mild-to-moderate renal insufficiency (creatinine clearance >30 mL/min) is similar to that in patients with normal renal function. In patients with creatinine clearance ≤ 30

mL/min, peak benazeprilat levels and the initial (alpha phase) half-life increase, and time to steady state may be delayed (see DOSAGE AND ADMINISTRATION (2)).

When dialysis was started 2 hours after ingestion of 10 mg of benazepril, approximately 6% of benazeprilat was removed in 4 hours of dialysis. The parent compound, benazepril, was not detected in the dialysate.

Hepatic impairment

In patients with hepatic insufficiency (due to cirrhosis) , the pharmacokinetics of benazeprilat are essentially unaltered.

Drug Interactions

The pharmacokinetics of benazepril are not affected by the following drugs: hydrochlorothiazide, furosemide, chlorthalidone, digoxin, propranolol, atenolol, nifedipine, amlodipine, naproxen, acetylsalicylic acid, or cimetidine. Likewise the administration of benazepril does not substantially affect the pharmacokinetics of these medications (cimetidine kinetics were not studied)

Pediatrics

The pharmacokinetics of benazeprilat, evaluated in pediatric patients with hypertension following oral administration of a single dose is presented in table below.

Age group	C _{max} (ng/mL)	T _{max} * (h)	AUC _{0-inf} (ng/mL*h)	CL/F/wt (L/h/Kg)	T _{1/2} (h)
>1 to ≤ 24 months n=5	277 (192, 391)	1 (0.6, 2)	1328 (773, 2117)	0.26 (0.18, 0.4)	5.0 (4, 5.8)
>2 to ≤ 6 years n=7	200 (168, 244)	2 (1.4, 2.4)	978 (842, 1152)	0.36 (0.31, 0.42)	5.5 (4.7, 6.5)
>6 to ≤ 12 years n=7	221 (194, 258)	2 (1.2, 2.2)	1041 (855, 1313)	0.25 (0.21, 0.31)	5.5 (4.7, 6.5)
>12 to ≤ 17 years n=8	287 (217, 420)	2 (1.3, 2.3)	1794 (1478, 2340)	0.16 (0.13, 0.21)	5.1 (4.2, 5.7)

13 NONCLINICAL TOXICOLOGY

13.1 Carcinogenesis, Mutagenesis, Impairment of Fertility

No evidence of carcinogenicity was found when benazepril was administered to rats and mice for up to two years at doses of up to 150 mg/kg/day. When compared on the basis of body weights, this dose is 110 times the maximum recommended human dose. When compared on the basis of body surface areas, this dose is 18 and 9 times (rats and mice, respectively) the maximum recommended human dose (calculations assume a patient weight of 60 kg). No mutagenic activity was detected in the Ames test in bacteria (with or without metabolic activation), in an in vitro test for forward mutations in cultured mammalian cells, or in a nucleus anomaly test. In doses of 50-500 mg/kg/day

(6-60 times the maximum recommended human dose based on mg/m² comparison and 37-375 times the maximum recommended human dose based on a mg/kg comparison), benazepril hydrochloride had no adverse effect on the reproductive performance of male and female rats.

14 CLINICAL STUDIES

Hypertension

Adult Patients

In single-dose studies, benazepril hydrochloride lowered blood pressure within 1 hour, with peak reductions achieved between 2 and 4 hours after dosing. The antihypertensive effect of a single dose persisted for 24 hours. In multiple-dose studies, once-daily doses of between 20 mg and 80 mg decreased seated pressure 24 hours after dosing by about 6 to 12mmHg systolic and 4 to 7 mmHg diastolic. The trough values represent reductions of about 50% of that seen at peak.

Four dose-response studies using once-daily dosing were conducted in 470 mild-to-moderate hypertensive patients not using diuretics. The minimal effective once-daily dose of benazepril hydrochloride was 10 mg; but further falls in blood pressure, especially at morning trough, were seen with higher doses in the studied dosing range (10-80 mg). In studies comparing the same daily dose of benazepril hydrochloride given as a single morning dose or as a twice-daily dose, blood pressure reductions at the time of morning trough blood levels were greater with the divided regimen.

The antihypertensive effects of benazepril hydrochloride were not appreciably different in patients receiving high-or low-sodium diets.

In normal human volunteers, single doses of benazepril caused an increase in renal blood flow but had no effect on glomerular filtration rate.

Use of benazepril hydrochloride in combination with thiazide diuretics gives a blood-pressure-lowering effect greater than that seen with either agent alone. By blocking the renin-angiotensin-aldosterone axis, administration of benazepril hydrochloride tends to reduce the potassium loss associated with the diuretic.

Pediatric Patients

In a clinical study of 107 pediatric patients, 7 to 16 years of age, with either systolic or diastolic pressure above the 95th percentile, patients were given 0.1 or 0.2 mg/kg then titrated up to 0.3 or 0.6 mg/kg with a maximum dose of 40 mg once daily. After four weeks of treatment, the 85 patients whose blood pressure was reduced on therapy were then randomized to either placebo or benazepril and were followed up for an additional two weeks. At the end of two weeks, blood pressure (both systolic and diastolic) in children withdrawn to placebo rose by 4 to 6 mmHg more than in children on benazepril. No dose-response was observed.

16 HOW SUPPLIED/STORAGE AND HANDLING

Benazepril hydrochloride tablets, USP, 20 mg, are round, grey, film-coated tablets, debossed S on one side and 343 on the other side, packaged as follows:

NDC 68071-1969-3 BOTTLES OF 30

NDC 68071-1969-6 BOTTLES OF 60

NDC 68071-1969-9 BOTTLES OF 90

NDC 68071-1969-2 BOTTLES OF 120

Store at 20-25°C (68-77°F) [See USP Controlled Room Temperature]. Protect from moisture. Dispense in tight container (USP).

Distributed by:

Solco Healthcare US, LLC

Cranbury, NJ 08512, USA

Manufactured by:

Zhejiang Huahai Pharmaceutical Co., Ltd. Revised: 12/2015

17 PATIENT COUNSELING INFORMATION

Pregnancy: Tell female patients of childbearing age about the consequences of exposure to benazepril hydrochloride during pregnancy. Discuss treatment options with women planning to become pregnant. Instruct patients to report pregnancies to their physicians as soon as possible.

Angioedema: Angioedema, including laryngeal edema, can occur at any time with treatment with ACE inhibitors. Tell patients to report immediately any signs or symptoms suggesting angioedema (swelling of face, eyes, lips, or tongue, or difficulty in breathing) and to take no more drug until they have consulted with the prescribing physician.

Symptomatic Hypotension: Tell patients to report light-headedness especially during the first few days of therapy. If actual syncope occurs, tell the patient to discontinue the drug until they have consulted with the prescribing physician.

Tell patients that excessive perspiration and dehydration may lead to an excessive fall in blood pressure because of a reduction in fluid volume. Other causes of volume depletion such as vomiting or diarrhea may also lead to a fall in blood pressure; advise patients accordingly.

Hyperkalemia: Tell patients not to use potassium supplements or salt substitutes containing potassium without consulting the prescribing physician.

Hypoglycemia: Tell diabetic patients treated with oral antidiabetic agents or insulin starting an ACE inhibitor to monitor for hypoglycemia closely, especially during the first month of combined use.

PRINCIPAL DISPLAY PANEL -

NDC: 68071-1969-9

Benazepril HCl 20mg

#90 Tablets

Each tablet contains:
Benazepril Hydrochloride, USP... 20mg

Round Grey Tablet Debossed:
"S" on one side "343" on the other side

Product #: P1146090

Rx Only

Benazepril HCl 20mg

Lot: 000000 NDC: 68071-1969-09
MFR NDC: 43547-337-50 Exp.: 00-00

Benazepril HCl 20mg

Lot: 000000 NDC: 68071-1969-09
MFR NDC: 43547-337-50 Exp.: 00-00



GTIN 00368071196993
Serial# 0000000002
Exp. Date 00-00
LOT#: 000000

Call your doctor for medical advice about side effects. You may report side effects to FDA at 1-800-FDA-1088.

Manufactured by: 3
Zhejiang Huahai Pharm. Co., Ltd.
Zhejiang, 317024 China
Packaged By:
NuCare Pharmaceuticals, Inc.
Orange, CA 92867

Take _____ every _____ hours
_____ times a day.

Rev 01/01/19

WARNING: KEEP OUT OF REACH OF CHILDREN

STORE AT CONTROLLED TEMPERATURE 68-77°F.

BENAZEPRIL HYDROCHLORIDE

benazepril hydrochloride tablet, coated

Product Information

Product Type	HUMAN PRESCRIPTION DRUG	Item Code (Source)	NDC:68071-1969(NDC:43547-337)
Route of Administration	ORAL		

Active Ingredient/Active Moiety

Ingredient Name	Basis of Strength	Strength
BENAZEPRIL HYDROCHLORIDE (UNII: N1SN99T69T) (BENAZEPRILAT - UNII:JRM708L703)	BENAZEPRIL HYDROCHLORIDE	20 mg

Inactive Ingredients

Ingredient Name	Strength
CARNAUBA WAX (UNII: R12CBM0EIZ)	
SILICON DIOXIDE (UNII: ETJ7Z6XBU4)	
CROSPVIDONE (UNII: 68401960MK)	
HYPROMELLOSES (UNII: 3NXW29V3WO)	
LACTOSE MONOHYDRATE (UNII: EWQ57Q8I5X)	
MAGNESIUM STEARATE (UNII: 70097M6I30)	
CELLULOSE, MICROCRYSTALLINE (UNII: OP1R32D61U)	
POLYDEXTROSE (UNII: VH2XOU12IE)	
POLYETHYLENE GLYCOL, UNSPECIFIED (UNII: 3WJQ0SDW1A)	
STARCH, CORN (UNII: O8232NY3S)	
TITANIUM DIOXIDE (UNII: 15FIX9V2JP)	
TRIACETIN (UNII: XHX3C3X673)	
FERROSFERRIC OXIDE (UNII: XM0M87F357)	
FERRIC OXIDE YELLOW (UNII: EX43802MRT)	

Product Characteristics

Color	gray	Score	no score
Shape	ROUND	Size	8mm
Flavor		Imprint Code	S;343
Contains			

Packaging

#	Item Code	Package Description	Marketing Start Date	Marketing End Date
1	NDC:68071-1969-3	30 in 1 BOTTLE; Type 0: Not a Combination Product	07/02/2018	
2	NDC:68071-1969-6	60 in 1 BOTTLE; Type 0: Not a Combination Product	07/02/2018	
3	NDC:68071-1969-9	90 in 1 BOTTLE; Type 0: Not a Combination Product	07/02/2018	
4	NDC:68071-1969-2	120 in 1 BOTTLE; Type 0: Not a Combination Product	07/02/2018	

Marketing Information

Marketing Category	Application Number or Monograph Citation	Marketing Start Date	Marketing End Date
ANDA	ANDA076118	01/01/2014	

Labeler - NuCare Pharmaceuticals,Inc. (010632300)

Establishment

Name	Address	ID/FEI	Business Operations
NuCare Pharmaceuticals, Inc.		010632300	repack(68071-1969)

Revised: 2/2021

NuCare Pharmaceuticals, Inc.