

**ANTI-DIARRHEAL- loperamide hcl tablet**  
**Valu Merchandisers Company**

-----  
**Best Choice 44-375**

***Active ingredient (in each caplet)***

Loperamide HCl 2 mg

***Purpose***

Anti-diarrheal

***Uses***

controls symptoms of diarrhea, including Travelers' Diarrhea

***Warnings***

**Allergy alert:** Do not use if you have ever had a rash or other allergic reaction to loperamide HCl.

**Heart alert:** Taking more than directed can cause serious heart problems or death.

**Do not use**

if you have bloody or black stool.

**Ask a doctor before use if you have**

- a fever
- mucus in the stool
- a history of liver disease
- a history of abnormal heart rhythm

**Ask a doctor or pharmacist before use if you are**

taking a prescription drug. Loperamide may interact with certain prescription drugs.

**When using this product**

tiredness, drowsiness, or dizziness may occur. Be careful when driving or operating machinery.

**Stop use and ask a doctor if**

- symptoms get worse
- diarrhea lasts for more than 2 days
- you get abdominal swelling or bulging. These may be signs of a serious condition.

**If pregnant or breast-feeding,**

ask a health professional before use.

**Keep out of reach of children.**

In case of overdose, get medical help or contact a Poison Control Center right away.

***Directions***

- drink plenty of clear fluids to help prevent dehydration caused by diarrhea
- find right dose on chart. If possible, use weight to dose; otherwise, use age.

adults and children 12 years and over	2 caplets after the first loose stool; 1 caplet after each subsequent loose stool; but no more than 4 caplets in 24 hours
children 9-11 years (60-95 lbs)	1 caplet after the first loose stool; 1/2 caplet after each subsequent loose stool; but no more than 3 caplets in 24 hours
children 6-8 years (48-59 lbs)	1 caplet after the first loose stool; 1/2 caplet after each subsequent loose stool; but no more than 2 caplets in 24 hours
children 2-5 years (34-47 lbs)	ask a doctor
children under 2 years (up to 33 lbs)	do not use

***Other information***

- **TAMPER EVIDENT: DO NOT USE IF OUTER PACKAGE IS OPENED OR BLISTER IS TORN OR BROKEN**
- see end flap for expiration date and lot number
- store between 20°-25°C (68°-77°F)

***Inactive ingredients***

corn starch, D&C yellow #10 aluminum lake, dibasic calcium phosphate dihydrate, FD&C blue #1 aluminum lake, magnesium stearate, microcrystalline cellulose, silicon dioxide

***Questions or comments?***

**Call 1-800-426-9391 8:30 AM-4:00 PM ET, Monday-Friday**

***Principal display panel***

**Best Choice®**

COMPARE TO THE ACTIVE INGREDIENT IN IMODIUM® A-D\*

Loperamide HCl Tablets, 2 mg  
Anti-Diarrheal

Controls the symptoms of diarrhea

12 caplets

Actual Size

PROUDLY DISTRIBUTED BY:  
VALU MERCHANDISERS, CO.  
5000 KANSAS AVE  
KANSAS CITY, KS 66106

**Best Choice®**  
**100% Guaranteed**  
www.bestchoicebrand.com

1. To open, tear  
at perforations  
and remove a section.

2. Use scissors to cut  
through plastic for caplet

\*This product is not manufactured or distributed by  
Johnson & Johnson Corporation, owner of the registered  
trademark Imodium® A-D.

50844 ORG061937502

**TAMPER EVIDENT: DO NOT USE IF PACKAGE IS  
OPENED OR IF BLISTER UNIT IS TORN, BROKEN OR  
SHOWS ANY SIGNS OF TAMPERING**

**Best Choice®**

**COMPARE TO THE ACTIVE INGREDIENT  
IN IMODIUM® A-D\***

**Loperamide HCl Tablets, 2 mg  
Anti-Diarrheal**

Actual Size  
1/4" x 3/8"

Controls the symptoms  
of diarrhea

**12 CAPLETS**

**Best Choice®**  
**100% Guaranteed**  
www.bestchoicebrand.com

**Drug Facts (continued)**  
■ see end flap for expiration date and lot number ■ store between 20°-25°C (68°-77°F)  
**Inactive ingredients** corn starch, D&C yellow #10 aluminum lake, dibasic calcium phosphate dihydrate, FD&C blue #1 aluminum lake, magnesium stearate, microcrystalline cellulose, silicon dioxide

**Questions or comments?** Call 1-800-426-9391 8:30 AM-4:00 PM ET, Monday-Friday

**Use** controls symptoms of diarrhea, including Travelers' Diarrhea

**Active ingredient (in each caplet)** Loperamide HCl 2 mg

**Purpose** Anti-diarrheal

**KEEP OUTER PACKAGE FOR COMPLETE PRODUCT INFORMATION**

**Use** 1. To open, tear at perforations and remove a section. 2. Use 1/4" to cut through plastic for caplet.

**TAMPER EVIDENT: DO NOT USE IF PACKAGE IS OPENED OR IF BLISTER UNIT IS TORN, BROKEN OR SHOWS ANY SIGNS OF TAMPERING**

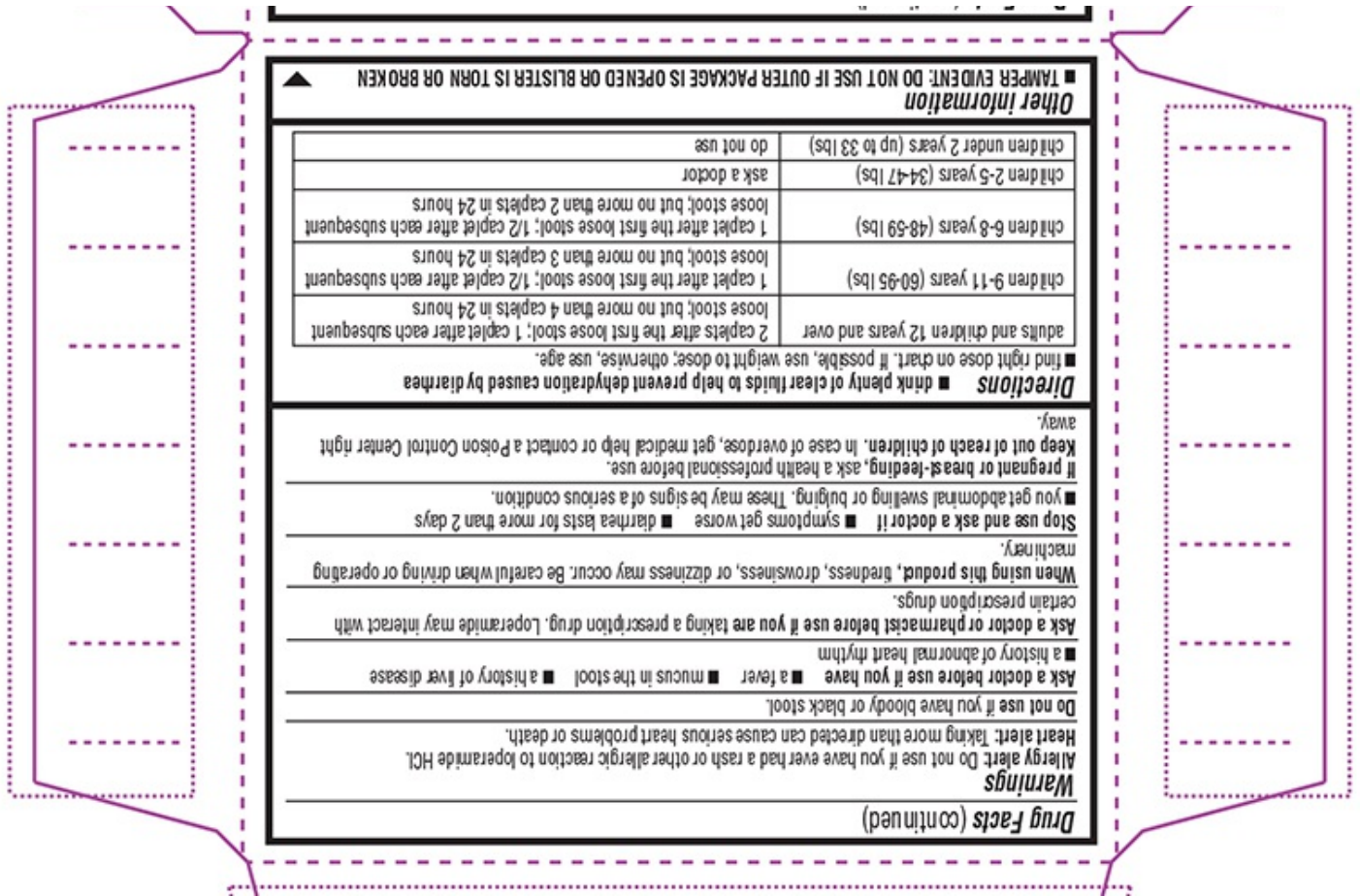
No print/No varnish  
Lot & Exp date

0 70038 20153 3

B-2115-375-02-R  
OR061937502

\*This product is not manufactured or distributed by Johnson & Johnson Corporation, owner of the registered trademark Imodium® A-D. 50844 ORG061937502

PROUDLY DISTRIBUTED BY:  
VALU MERCHANTISERS, CO.  
5000 KANSAS AVE  
KANSAS CITY, KS 66106



Best Choice 44-375

<b>ANTI-DIARRHEAL</b>			
loperamide hcl tablet			
<b>Product Information</b>			
<b>Product Type</b>	HUMAN OTC DRUG	<b>Item Code (Source)</b>	NDC:63941-375
<b>Route of Administration</b>	ORAL		
<b>Active Ingredient/Active Moiety</b>			
<b>Ingredient Name</b>		<b>Basis of Strength</b>	<b>Strength</b>
LOPERAMIDE HYDROCHLORIDE (UNII: 77T35393C) (LOPERAMIDE - UNII:6X9OC3H4I)		LOPERAMIDE HYDROCHLORIDE	2 mg
<b>Inactive Ingredients</b>			
<b>Ingredient Name</b>			<b>Strength</b>
STARCH, CORN (UNII: O8232NY3SJ)			
D&C YELLOW NO. 10 ALUMINUM LAKE (UNII: CQ3XH3DET6)			
DIBASIC CALCIUM PHOSPHATE DIHYDRATE (UNII: O7TSZ97GEP)			
FD&C BLUE NO. 1 ALUMINUM LAKE (UNII: J9EQA3S2JM)			
MAGNESIUM STEARATE (UNII: 70097M6I30)			
MICROCRYSTALLINE CELLULOSE (UNII: OP1R32D61U)			
SILICON DIOXIDE (UNII: ETJ7Z6XBU4)			

**Product Characteristics**

<b>Color</b>	GREEN	<b>Score</b>	2 pieces
<b>Shape</b>	OVAL	<b>Size</b>	10mm
<b>Flavor</b>		<b>Imprint Code</b>	44;375
<b>Contains</b>			

**Packaging**

#	Item Code	Package Description	Marketing Start Date	Marketing End Date
1	NDC:63941-375-02	1 in 1 CARTON	05/05/2020	
1		12 in 1 BLISTER PACK; Type 0: Not a Combination Product		
2	NDC:63941-375-08	2 in 1 CARTON	05/05/2020	
2		12 in 1 BLISTER PACK; Type 0: Not a Combination Product		

**Marketing Information**

Marketing Category	Application Number or Monograph Citation	Marketing Start Date	Marketing End Date
ANDA	ANDA076497	05/05/2020	

**Labeler** - Valu Merchandisers Company (868703513)**Establishment**

Name	Address	ID/FEI	Business Operations
LNK International, Inc.		832867894	MANUFACTURE(63941-375)

**Establishment**

Name	Address	ID/FEI	Business Operations
LNK International, Inc.		038154464	PACK(63941-375)

**Establishment**

Name	Address	ID/FEI	Business Operations
LNK International, Inc.		967626305	PACK(63941-375)

**Establishment**

Name	Address	ID/FEI	Business Operations
LNK International, Inc.		868734088	PACK(63941-375)

**Establishment**

Name	Address	ID/FEI	Business Operations
LNK International, Inc.		832867837	PACK(63941-375)