

PRUCALOPRIDE- prucalopride tablet, film coated

SpecGx LLC

HIGHLIGHTS OF PRESCRIBING INFORMATION

These highlights do not include all the information needed to use PRUCALOPRIDE TABLETS safely and effectively. See full prescribing information for

PRUCALOPRIDE TABLETS. PRUCALOPRIDE tablets, for oral use

Initial U.S. Approval: 2018

RECENT MAJOR CHANGES

Warnings and Precautions (5.1) 11/2020

INDICATIONS AND USAGE

Prucalopride tablets is a serotonin-4 (5-HT₄) receptor agonist indicated for the treatment of chronic idiopathic constipation (CIC) in adults. (1)

DOSAGE AND ADMINISTRATION

- Take with or without food. (2)
- Recommended dosage by patient population:

Population with CIC	Recommended Oral Dose Regimen
Adults	2 mg once daily. (2)
Patients with severe renal impairment (creatinine clearance (CrCL) less than 30 mL/min	1 mg once daily. (2, 8.5, 8.6)

DOSAGE FORMS AND STRENGTHS

Tablets: 1 mg, 2 mg of prucalopride (3)

CONTRAINDICATIONS

- Hypersensitivity to prucalopride tablets (4)
- Intestinal perforation or obstruction due to structural or functional disorder of the gut wall, obstructive ileus, severe inflammatory conditions of the intestinal tract such as Crohn's disease, ulcerative colitis, and toxic megacolon/megarectum. (4)

WARNINGS AND PRECAUTIONS

Suicidal Ideation and Behavior: Monitor patients for suicidal ideation and behavior as well as self-injurious ideation and new-onset or worsening of depression. Instruct patients to discontinue prucalopride tablets immediately and contact their healthcare provider if they experience any unusual changes in mood or behavior, or they experience emerging suicidal thoughts or behaviors. (5.1)

ADVERSE REACTIONS

Most common adverse reactions (≥2%) are headache, abdominal pain, nausea, diarrhea, abdominal distension, dizziness, vomiting, flatulence, and fatigue. (6.1)

To report SUSPECTED ADVERSE REACTIONS, contact Mallinckrodt at 1-800-778-7898 or FDA at 1-800-FDA-1088 or www.fda.gov/medwatch.

See 17 for PATIENT COUNSELING INFORMATION.

Revised: 7/2024

FULL PRESCRIBING INFORMATION: CONTENTS*

RECENT MAJOR CHANGES

1 INDICATIONS AND USAGE

2 DOSAGE AND ADMINISTRATION

3 DOSAGE FORMS AND STRENGTHS

5 WARNINGS AND PRECAUTIONS

6 ADVERSE REACTIONS

6.1 Clinical Trials Experience

6.2 Postmarketing Experience

8 USE IN SPECIFIC POPULATIONS

8.1 Pregnancy

8.2 Lactation

8.4 Pediatric Use

8.5 Geriatric Use

8.6 Renal Impairment

10 OVERDOSAGE

11 DESCRIPTION

12 CLINICAL PHARMACOLOGY

12.1 Mechanism of Action

12.2 Pharmacodynamics

12.3 Pharmacokinetics

13 NONCLINICAL TOXICOLOGY

13.1 Carcinogenesis, Mutagenesis, Impairment of Fertility

13.2 Animal Toxicology and/or Pharmacology

14 CLINICAL STUDIES

16 HOW SUPPLIED/STORAGE AND HANDLING

17 PATIENT COUNSELING INFORMATION

* Sections or subsections omitted from the full prescribing information are not listed.

FULL PRESCRIBING INFORMATION

1 INDICATIONS AND USAGE

Prucalopride tablet is indicated for the treatment of chronic idiopathic constipation (CIC) in adults.

2 DOSAGE AND ADMINISTRATION

Prucalopride tablets can be taken with or without food. The recommended dosage by patient population is shown in Table 1.

Table 1: Recommended Dosage Regimen and Dosage Adjustments by Population

Population with CIC	Recommended Oral Dose Regimen
Adults	2 mg once daily
Patients with severe renal impairment	

(creatinine clearance (CrCL) less than 30 mL/min) [see Use in Specific Populations (8.5 and 8.6)].	1 mg once daily
---	-----------------

3 DOSAGE FORMS AND STRENGTHS

Prucalopride tablets:

- 1 mg prucalopride: White, round, biconvex film-coated tablet debossed with "P1" on one side and no debossing on the other side.
- 2 mg prucalopride: Pink, round, biconvex film-coated tablet debossed with "P2" on one side and no debossing on the other side.

4 CONTRAINDICATIONS

Prucalopride tablet is contraindicated in patients with:

- A history of hypersensitivity to prucalopride tablets. Reactions including dyspnea, rash, pruritus, urticaria, and facial edema have been observed [(see Adverse Reactions (6.2)].
- Intestinal perforation or obstruction due to structural or functional disorder of the gut wall, obstructive ileus, severe inflammatory conditions of the intestinal tract such as Crohn's disease, ulcerative colitis, and toxic megacolon/megarectum.

5 WARNINGS AND PRECAUTIONS

5.1 Suicidal Ideation and Behavior

In clinical trials, suicides, suicide attempts, and suicidal ideation have been reported. Postmarketing cases of suicidal ideation and behavior as well as self-injurious ideation and new onset or worsening of depression have been reported within the first few weeks of starting prucalopride tablets [see Adverse Reactions (6.1, 6.2)].

A causal association between treatment with prucalopride tablets and an increased risk of suicidal ideation and behavior has not been established.

Monitor all patients treated with prucalopride tablets for new onset or worsening of depression or the emergence of suicidal thoughts and behaviors. Counsel patients, their caregivers, and family members of patients to be aware of any unusual changes in mood or behavior and alert the healthcare provider. Instruct patients to discontinue prucalopride tablets immediately and contact their healthcare provider if they experience any of these symptoms.

6 ADVERSE REACTIONS

6.1 Clinical Trials Experience

Because clinical trials are conducted under widely varying conditions, adverse reaction

rates observed in the clinical trials of a drug cannot be directly compared to rates in the clinical trials of another drug and may not reflect the rates observed in practice.

The data described below represent 2530 patients (1251 received prucalopride tablets 2 mg once daily and 1279 received placebo) with CIC from 6 double-blind, placebo-controlled clinical trials of 12 weeks to 24 weeks in duration. In these trials overall, patients were primarily female (76%) and white (76%). The mean age was 47 years (range 17 to 95 years) [see *Clinical Studies* (14)].

Common Adverse Reactions

Table 2 below summarizes the incidence (%) of common adverse reactions occurring in at least 2% of patients with CIC receiving either 2 mg of prucalopride tablets once daily or placebo and at an incidence greater than in the placebo group from the six double-blind placebo-controlled trials described above.

Table 2: Common Adverse Reactions¹ in Double-Blind Placebo-Controlled Trials of CIC of at least 12 Weeks Duration

Adverse Reaction	Prucalopride tablets 2 mg Once Daily N=1251² %	Placebo N=1279 %
Headache	19	9
Abdominal pain ³	16	11
Nausea	14	7
Diarrhea	13	5
Abdominal distension	5	4
Dizziness	4	2
Vomiting	3	2
Flatulence	3	2
Fatigue	2	1

¹Reported in $\geq 2\%$ of patients receiving prucalopride tablets and a rate higher than patients receiving placebo.

²Includes 93 patients who started on prucalopride tablets 1 mg and increased to prucalopride tablets 2 mg.

³Includes abdominal pain, upper abdominal pain, lower abdominal pain, abdominal tenderness, abdominal discomfort, and epigastric discomfort.

Less Common Adverse Reactions

Less common adverse reactions occurring in $<2\%$ of patients receiving prucalopride tablets 2 mg once daily include:

Gastrointestinal disorders: abnormal gastrointestinal sounds

Metabolism and nutrition disorders: decreased appetite

Nervous system disorders: migraine

Renal and urinary disorders: pollakiuria

Diarrhea

Of the patients who reported diarrhea, 70% (110 out of 157) reported it in the first week of treatment. Diarrhea typically resolved within a few days in 73% (80 out of 110) of those patients. Severe diarrhea was reported in 1.8% of patients treated with prucalopride tablets 2 mg compared to 1% of patients in the placebo group, and had a similar onset and duration as diarrhea overall.

Headache

Of the patients who reported headache, 66% (157 out of 237) treated with prucalopride tablets 2 mg once daily reported onset in the first 2 days of treatment. Symptoms typically resolved within a few days in 65% (102 out of 157) of those patients.

Adverse Reactions Leading to Discontinuation

In the 6 clinical trials described above, 5% of patients treated with 2 mg of prucalopride tablets once daily discontinued due to adverse reactions, compared to 3% of patients in the placebo group. The most common adverse reactions leading to discontinuation were nausea (2% prucalopride tablets, 1% placebo), headache (1% prucalopride tablets, 1% placebo), diarrhea (1% prucalopride tablets, <1% placebo), or abdominal pain (1% prucalopride tablets, 1% placebo).

Adverse Reactions of Special Interest

Adverse reactions of special interest were evaluated in a pool of 28 completed clinical trials (19 double-blind and 9 open-label) for prucalopride tablets at doses including 0.5 mg, 1 mg, 2 mg, or 4 mg per day in adult patients with CIC (the recommended dosage of prucalopride tablets for CIC is 2 mg once daily). The total exposure in the double-blind trials was 565 patient-years in the prucalopride tablets group, 384 patient-years in the placebo group, and 2769 patient-years in the double-blind and open-label clinical trials.

Cardiovascular Safety Analysis

In an evaluation by an independent adjudication committee of all potential major adverse cardiovascular events (MACE), defined as cardiovascular death, nonfatal myocardial infarction, and nonfatal stroke, the standardized incidence rate (IR) per 1000 patient-years for MACE for prucalopride tablets was compared with the IR for placebo.

In the double-blind trials, the IR for MACE was 3.5 (2 patients out of 3366; 1 patient on 2 mg and 1 patient on 4 mg) in the prucalopride tablets group and 5.2 (2 patients out of 2019) in the placebo group. When combining the double-blind and open-label trials, the IR for MACE was 3.3 (9 patients out of 4472, doses ranging between 0.5 to 4 mg) for prucalopride tablets.

Suicidal Ideation and Behavior

In the double-blind trials, one patient reported a suicide attempt 7 days after the end of treatment with prucalopride tablets 2 mg once daily; none were reported in patients on placebo. In the open-label trials, two patients reported a suicide attempt and another patient reported suicidal ideation. Completed suicide was reported in two patients, previously treated with prucalopride tablets 2 mg or 4 mg; both discontinued prucalopride tablets for at least one month prior to the event.

Observational Cardiovascular Cohort Study

The overall cardiovascular safety of prucalopride tablets was assessed using European

healthcare databases in a population-based, retrospective, observational, cohort study of adults with constipation. New users of prucalopride tablets (N=5715) were matched to new users of polyethylene glycol 3350 (PEG) (N=29,372) to estimate the standardized incidence rate ratio (SIRR) for MACE, pooled across four data sources. The 95% confidence interval for the pooled estimate of the SIRR did not demonstrate an increased MACE risk and excluded a pre-specified safety margin of a three-fold risk of MACE during prucalopride use relative to PEG use.

6.2 Postmarketing Experience

The following adverse reactions have been identified during post-approval use of prucalopride. Because these reactions are reported voluntarily from a population of uncertain size, it is not always possible to reliably estimate their frequency or establish a causal relationship to drug exposure.

Hypersensitivity reactions: dyspnea, rash, pruritus, urticaria, and facial edema [see *Contraindications* (4)].

Psychiatric disorders: Suicide, suicide attempts, suicidal ideation, self-injurious ideation, depression, anxiety, insomnia, nightmares, and visual hallucinations [see *Warnings and Precautions* (5.1)].

8 USE IN SPECIFIC POPULATIONS

8.1 Pregnancy

Risk Summary

Available data from case reports with prucalopride use in pregnant women are insufficient to identify any drug-associated risks of miscarriage, major birth defects, or adverse maternal or fetal outcomes. In animal reproduction studies, no adverse developmental effects were observed with prucalopride administration during the period of organogenesis to pregnant rats and rabbits at doses up to approximately 390 times and 780 times, respectively, the recommended human dose of 2 mg/day (see *Data*).

The estimated background risk of major birth defects and miscarriage for the indicated population is unknown. All pregnancies have a background risk of birth defect, loss, or other adverse outcomes. In the U.S. general population, the estimated background risk of major birth defects and miscarriage in clinically recognized pregnancies is 2 to 4% and 15 to 20%, respectively.

Data

Animal Data

In oral embryofetal development studies in rats and rabbits, prucalopride was administered to pregnant animals at doses of 5, 20, and 80 mg/kg/day throughout the period of organogenesis. No adverse embryofetal developmental effects were observed in either rats or rabbits up to the highest oral dose of 80 mg/kg/day (about 390 times and 780 times the recommended human dose of 2 mg/day, respectively, based on body surface area).

In an oral pre- and post-natal development study in rats, prucalopride was administered at doses of 5, 20, and 80 mg/kg/day. At the 80-mg/kg dose (about 390 times the

recommended human dose of 2 mg/day, based on body surface area), a slight decrease in overall survival rate of pups after 7 days was observed, which could be due to maternal toxicity observed at this dose.

8.2 Lactation

Risk Summary

Prucalopride is present in breast milk (see *Data*). There are no data on the effects of prucalopride on the breastfed child or the effects on milk production. The developmental and health benefits of breastfeeding should be considered along with the mother's clinical need for prucalopride tablets and any potential adverse effects on the breastfed child from prucalopride tablets or from the underlying maternal condition.

Data

In an open-label study in 8 healthy lactating women in the weaning stage, plasma and milk samples were collected at predose (day 1 and 4), and then 2, 4, 8, 12, and 24 hours (day 4) after a 2-mg dose of prucalopride was administered once daily for 4 days. Prucalopride is excreted in breast milk with a milk to plasma AUC ratio of 2.65:1; the average amount passed to the infant was estimated to be 1.74 mcg/kg/day, which is about 6% of the maternal dose, adjusted for body weight. The prucalopride concentration detected in breast milk during weaning may not reflect the prucalopride concentration in breast milk during full milk production.

8.4 Pediatric Use

The safety and effectiveness of prucalopride tablets have not been established in pediatric patients.

8.5 Geriatric Use

Of the 2484 patients treated with prucalopride tablets 1 mg or 2 mg once daily in 6 controlled trials of at least 12-week duration in patients with CIC, 15% were 65 years of age and over, and 5% were 75 years of age and over [see *Clinical Studies (14)*]. No overall differences in safety and effectiveness were observed between elderly and younger patients.

In an additional 4-week double-blind, placebo-controlled dose escalation study in 89 elderly nursing home residents with CIC (PRU-USA-26, NCT00627692), no unanticipated safety issues were identified.

Elderly subjects had higher prucalopride exposure compared to younger subjects. However, the effect of age on the pharmacokinetics of prucalopride appeared to be related to decreased renal function [see *Clinical Pharmacology (12.3)*]. Adjust the dosage in elderly patients based on renal function [see *Dosage and Administration (2)*, *Use in Specific Populations (8.6)*].

8.6 Renal Impairment

No dosage adjustment is required for patients with mild and moderate renal impairment (creatinine clearance at least 30 mL/min, as determined from a 24-hour urine collection in the clinical trial).

Prucalopride tablets is known to be substantially excreted by the kidney, and the risk of

adverse reactions may be greater in patients with impaired renal function. A decreased dosage is recommended in patients with severe renal impairment (creatinine clearance less than 30 mL/min, as determined from a 24-hour urine collection in the clinical trial) [see *Dosage and Administration* (2)].

Avoid prucalopride tablets in patients with end-stage renal disease requiring dialysis [see *Clinical Pharmacology* (12.3)].

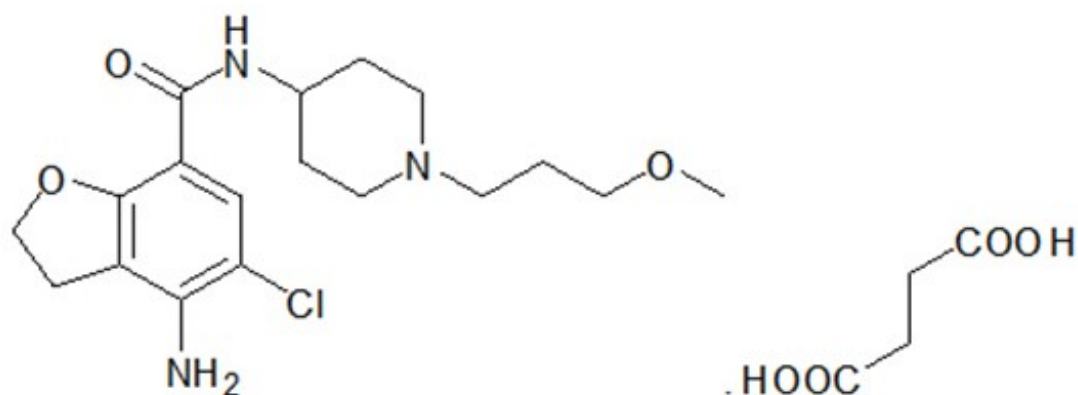
10 OVERDOSAGE

An overdose may result in appearance of symptoms from an exaggeration of the known pharmacodynamic effects of prucalopride and includes headache, nausea, and diarrhea. Specific treatment is not available for prucalopride tablets overdose. Should an overdose occur, treat symptomatically and institute supportive measures, as required. Extensive fluid loss from diarrhea or vomiting may require correction of electrolyte disturbances.

11 DESCRIPTION

Prucalopride tablets for oral use contain prucalopride succinate, a dihydrobenzofurancarboxamide that is a serotonin type 4 (5-HT₄) receptor agonist. The IUPAC name is: 4-amino-5-chloro-N-[1-(3-methoxypropyl)piperidin-4-yl]-2,3-dihydrobenzofuran-7-carboxamide succinate.

The molecular formula is C₁₈H₂₆ClN₃O₃·C₄H₆O₄ and the molecular weight is 485.96. The structural formula is:



Prucalopride succinate is a white to almost white powder. It is highly soluble in acidic aqueous media and alkaline aqueous media up to a pH of approximately 9.

Each 1-mg film-coated tablet of prucalopride tablet contains 1 mg of prucalopride (equivalent to 1.32 mg prucalopride succinate), and the following inactive ingredients: colloidal silicon dioxide, lactose monohydrate, magnesium stearate, and microcrystalline cellulose. The coating for the 1-mg tablet contains hypromellose, lactose monohydrate, polyethylene glycol 3350, titanium dioxide, and triacetin.

Each 2-mg film-coated tablet of prucalopride tablet contains 2 mg of prucalopride

(equivalent to 2.64 mg prucalopride succinate), and the following inactive ingredients: colloidal silicon dioxide, lactose monohydrate, magnesium stearate, and microcrystalline cellulose. The coating for the 2-mg tablet contains hypromellose, lactose monohydrate, polyethylene glycol 3350, titanium dioxide, triacetin, ferric oxide red, ferric oxide yellow, and indigotine LK.

12 CLINICAL PHARMACOLOGY

12.1 Mechanism of Action

Prucalopride, a selective serotonin type 4 (5-HT₄) receptor agonist, is a gastrointestinal (GI) prokinetic agent that stimulates colonic peristalsis (high-amplitude propagating contractions [HAPCs]), which increases bowel motility.

Prucalopride was devoid of effects mediated via 5-HT_{2A}, 5-HT_{2B}, 5-HT₃, motilin or CCK-A receptors *in vitro* at concentrations exceeding 5-HT₄ receptor affinity by 150-fold or greater. In isolated GI tissues from various animal species, prucalopride facilitated acetylcholine release to enhance the amplitude of contractions and stimulate peristalsis. In rats and dogs, prucalopride stimulated gastrointestinal motility with contractions starting from the proximal colon to the anal sphincter.

12.2 Pharmacodynamics

High Amplitude Propagating Contractions

Following a single 2-mg dose of prucalopride in patients with CIC, prucalopride increased the number of high amplitude propagating contractions (HAPCs) during the first 12 hours as compared with an osmotic laxative treatment. In addition, prucalopride 4 mg once daily (2 times the maximum human recommended dose of 2 mg) for 7 days increased the amplitude of HAPCs in healthy subjects without affecting colonic phasic activity as compared with placebo.

Colonic Transit Time

An integrated analysis of 3 randomized, placebo-controlled, dose-finding studies in 280 patients with CIC showed that after once daily treatment with 2 mg of prucalopride, the mean colonic transit time was reduced by 12 hours from a baseline of 65 hours for prucalopride 2 mg, compared to an increase of 0.5 hours from a baseline of 66 hours in the placebo group.

Cardiac Electrophysiology

At a dose 5 times the maximum approved recommended dose, a prucalopride tablet does not prolong the QT interval to any clinically relevant extent.

12.3 Pharmacokinetics

The pharmacokinetics of prucalopride has been evaluated in healthy subjects and is dose-proportional within and beyond the therapeutic range (tested up to 20 mg, 10 times the maximum approved recommended dose). Prucalopride administered once daily displays time-independent kinetics during prolonged treatment. With once daily administration of 2 mg prucalopride, pharmacokinetic steady-state is attained within 3 to 4 days, and steady-state plasma concentrations fluctuate between trough and peak

values of 2.5 and 7 ng/mL, respectively, with mean plasma AUC_{0-24h} of 109 ng•h/mL. The accumulation ratio after once daily dosing ranged from 1.9 to 2.3. The terminal half-life is approximately 1 day.

Pharmacokinetic parameters in patients with CIC are similar to those seen in healthy subjects.

Absorption

Following a single oral dose of 2 mg prucalopride in healthy subjects, peak plasma concentrations are observed within 2 to 3 hours after administration. The absolute oral bioavailability is >90%.

Effect of Food

Concomitant intake with a high-fat meal (1000 kcal total, 500 kcal from fat) does not influence the oral bioavailability of prucalopride [see *Dosage and Administration* (2)].

Distribution

Prucalopride has a steady-state volume of distribution (V_{ss}) of 567 liters after intravenous administration. The plasma protein binding of prucalopride is approximately 30%.

Elimination

Renal excretion is the main route of elimination of prucalopride. Non-renal elimination contributes up to about 35% of the total. The plasma clearance of prucalopride averages 317 mL/min.

Metabolism

Prucalopride is a substrate of CYP3A4, *in vitro*. In an oral dose study with radiolabeled prucalopride in healthy subjects, prucalopride made up 92 to 94% of the total radioactivity in plasma. There are 7 different known minor metabolites, the most abundant metabolite (O-desmethyl prucalopride acid) represents 0 to 1.7% of the total plasma exposure.

Excretion

Following oral administration of radiolabeled prucalopride in healthy subjects, 60 to 65% of the administered dose is excreted unchanged in urine and about 5% in feces. On average, 84.2% of administered radioactive dose was recovered in urine and 13.3% of the dose was recovered in feces. Seven metabolites were recovered in urine and feces, with the most abundant metabolite (O-desmethyl prucalopride acid) accounting for 3.2% and 3.1% of the dose in urine and feces, respectively. None of the other metabolites accounted for more than 3% of the dose. Renal elimination of prucalopride involves both passive filtration and active secretion.

Use in Specific Populations

Population pharmacokinetic analysis of a combined study population of 1343 subjects indicated that there were no clinically significant differences in the pharmacokinetics of prucalopride based on age (17-95 years), sex, race (89% white, 7% black, 4% other), or body weight (37-161 kg), after accounting for the effect of renal function.

Geriatric Patients

After once daily dosing of 1 mg, peak plasma concentrations (C_{max}) and AUC of prucalopride in geriatric subjects were 26% to 28% higher than in younger adult subjects. The effect of age appeared to be related to decreased renal function in the elderly. Additionally, a population pharmacokinetic analysis indicated that age was not a

significant covariate, after accounting for the effect of renal function [see *Use in Specific Populations* (8.5)].

Patients with Renal Impairment

After a single 2-mg oral dose, the mean AUC_{0-inf} of prucalopride increased 1.23-fold in subjects with mild renal impairment (creatinine clearance 60 to ≤89 mL/min), 1.4-fold in subjects with moderate renal impairment (creatinine clearance 30 to ≤59 mL/min), and 2.38-fold in subjects with severe renal impairment (creatinine clearance 15 to ≤29 mL/min), compared to subjects with normal renal function. The pharmacokinetics of prucalopride in patients with end-stage renal disease or undergoing dialysis is not fully known [see *Dosage and Administration* (2), *Use in Specific Populations* (8.6)].

Patients with Hepatic Impairment

After a single oral dose of 2 mg, C_{max} and AUC of prucalopride were on average 10 to 20% higher in subjects with moderate (Child-Pugh B) and severe (Child-Pugh C) hepatic impairment than in subjects with normal hepatic function. This effect is not considered to be clinically significant.

Drug Interaction Studies

Clinical Studies

Effect of Prucalopride on Other Drugs

Erythromycin

Co-administration of oral erythromycin (500 mg four times daily) with prucalopride increased the erythromycin mean C_{max} by 40% and mean AUC_{0-24h} by 28%. The mechanism for this interaction is not clear. The increased exposure to erythromycin is unlikely to be clinically significant.

Other Drugs

No clinically significant differences in the pharmacokinetics (no more than a 10% change in AUC) of the following drugs were observed when co-administered with prucalopride: warfarin, digoxin, paroxetine, or oral contraceptives (ethinyl estradiol and norethisterone).

Effect of Other Drugs on Prucalopride

Ketoconazole

Ketoconazole (200 mg twice daily), a strong CYP3A inhibitor and inhibitor of P-gp and BCRP, increased the C_{max} and AUC of prucalopride by approximately 40%. This effect is unlikely to be clinically significant.

Other Drugs

No clinically significant differences in prucalopride pharmacokinetics (no more than a 10% change in AUC) were observed when co-administered with erythromycin, probenecid, cimetidine, or paroxetine.

In Vitro Studies

Based on *in vitro* study results, the potential for prucalopride to inhibit CYP enzymes (1A2, 2A6, 2B6, 2C8, 2C9, 2C19, 2D6, 2E1, and 3A4) and transporters (P-gp, BCRP, OATP1B1, OATP1B3, OAT1, OAT3, OCT1, OCT2, MATE1, MATE2-K, BSEP, and MRP2 transporters) or induce CYP enzymes (1A2, 2B6, and 3A4) is low at the clinical concentration.

13 NONCLINICAL TOXICOLOGY

13.1 Carcinogenesis, Mutagenesis, Impairment of Fertility

Carcinogenesis

In a 2-year carcinogenicity study in mice, prucalopride was given by daily oral gavage at doses of 10, 20, and 80 mg/kg. An increased incidence of mammary gland adenocarcinomas was observed in female mice at 80 mg/kg/day. The finding is considered rodent-specific. No significant neoplastic changes were seen in male mice dosed up to 80 mg/kg/day and in female mice dosed up to 20 mg/kg/day (exposure ratio of 219 and 24 times the human dosage of 2 mg per day in male and female mice, respectively, based on AUC).

In a 2-year carcinogenicity study in rats, prucalopride was given by daily oral gavage at doses of 5, 20, and 80 mg/kg in males and 5, 10, and 40 mg/kg in females. In male and female rats there was a significant increase in the incidences of benign tumors, including hepatocellular adenomas, thyroid follicular adenomas, and mammary gland fibroadenomas. An increased incidence of pituitary adenomas, pancreas islet cell adenomas, and adrenal gland benign pheochromocytomas was also seen in male rats. The increases in neoplastic changes occurred primarily at the high dose of 80 mg/kg/day in male rats and 40 mg/kg/day in female rats (exposure ratios 556 times (males) and 495 times (females) the human dosage of 2 mg per day, based on AUC). There was no significant increase in tumor incidence at doses up to 20 mg/kg/day in male rats and up to 10 mg/kg/day in female rats (exposure ratios of 63 and 40 times the human dosage of 2 mg per day in male and female rats, respectively, based on AUC).

In a 12-month carcinogenicity study in neonatal mice, prucalopride was administered by oral gavage at total dosages of 75, 150, and 300 mg/kg given across 2 doses on day 8 of age (one-third of total dosage) and day 15 of age (two-thirds of total dosage). Prucalopride was not tumorigenic at doses up to 300 mg/kg (>1600 times the human exposure at 2 mg per day, based on AUC).

Mechanistic studies demonstrated that the increase in tumor incidence in rodents related to stimulation of prolactin in endocrine tissues was associated with dopamine D2 antagonist activity. The hepatic and thyroid tumors were due to induction of enzymes in liver and subsequent disruption of thyroid homeostasis.

Mutagenesis

Prucalopride was tested in a battery of assays, including the Ames bacterial mutation assay in *Salmonella typhimurium* and *Escherichia coli*, mouse lymphoma assay, chromosomal aberration assays in human lymphocytes, micronucleus test in mice, Vitotox test, and *in vitro* Unscheduled DNA Synthesis (UDS) studies. Prucalopride tested positive in the Ames bacterial mutation assay in the *S. typhimurium* TA100 strain, at concentrations ≥ 500 mcg/plate, both in the presence and absence of metabolic activation. Prucalopride was negative in other assays evaluating mutagenesis, including *in vitro* mammalian-based assays (e.g., mouse lymphoma assay, chromosomal aberration assays in human lymphocytes) and *in vivo* tests (e.g., micronucleus test in mice, a UDS test, a gene mutation assay in Big Blue transgenic rats, and a 32P-postlabeling study in target tissues identified in the carcinogenicity studies, including liver, mammary gland, thyroid, and adrenal tissues). Based on the weight of evidence, prucalopride does not appear to have a mutagenic potential.

Impairment of Fertility

In an oral fertility and early embryonic development study performed in rats at doses of 5, 20, and 80 mg/kg/day, there was no evidence of adverse effects on fertility at doses up to 20 mg/kg. At the highest dose of 80 mg/kg (about 390 times the recommended human dose of 2 mg/day, based on body surface area), an increase in pre-coital interval, pseudo-pregnancies, and pre-implantation loss were seen. These effects could be secondary to increased prolactin secretion with prucalopride treatment.

13.2 Animal Toxicology and/or Pharmacology

In safety pharmacology studies, no relevant effects were observed in any of the cardiovascular studies at concentrations at least 50 times the human therapeutic C_{max}. Prucalopride had no effect on potassium current in hERG-transfected HEK cells at concentrations up to 1 micromolar (50 times the human therapeutic C_{max}). At concentrations ≥ 3 micromolar, concentration-dependent inhibition of the current was observed (IC₅₀=22 micromolar; 1100 times the human therapeutic C_{max}). In studies in pigs, minor and transient increases in heart rate and blood pressure were noted upon first exposure to prucalopride, at plasma levels at least 10 times the human therapeutic C_{max}.

In repeated-dose toxicology studies in male rats, increases in heart weight (up to 9%) were observed at doses of 20 mg/kg/day or higher (at least 75 times the human therapeutic AUC). Cardiac histology revealed an increase in focal infiltration of chronic inflammatory cells in the heart at a dose of 80 mg/kg/day (at least 785 times the human therapeutic AUC). In dogs, no changes in heart rate, blood pressure, electrocardiogram parameters, heart weight, or cardiac histology were observed at any dose tested (the highest dose of 30 mg/kg/day was 572 times the human therapeutic AUC).

In vitro studies demonstrated no effect of prucalopride on either contractile responses in human, canine, and porcine coronary arteries at concentrations up to 10 micromolar (500 times the human clinical C_{max}) or on platelet aggregation at concentrations up to 200 nanomolar (10 times the human clinical C_{max}).

14 CLINICAL STUDIES

The efficacy of prucalopride tablets for the treatment of CIC was evaluated in six double-blind, placebo-controlled, randomized, multicenter clinical trials in 2484 adult patients (Studies 1 to 6; see *Table 3*). Studies 1 through 5 were 12-week treatment duration and Study 6 included 24 weeks of treatment. Patients less than 65 years were dosed with prucalopride tablets 2 mg once daily. In Studies 2 and 6, the geriatric patients started on prucalopride tablets 1 mg once daily and, if necessary, the dose was increased to 2 mg after 2 or 4 weeks of treatment in the event of insufficient response at 1 mg; of these patients 81% increased to 2 mg. Overall, the majority of patients were female (76%) and white (76%), and also included Asian (19%) and black (3%). The mean adult age was 47±16 years (range 17 to 95 years) and the mean duration of constipation was 16±15 years with 28% of patients having chronic constipation for at least 20 years.

Table 3: Main Studies in the Prucalopride Tablets Clinical Program

Study Number	Duration
Study 1 (PRU-CRC-3001, NCT01116206)	12 Weeks

Study 2 (SPD555-302, NCT01147926)	12 Weeks
Study 3 (PRU-INT-6, NCT00488137)	12 Weeks
Study 4 (PRU-USA-11, NCT00483886)	12 Weeks
Study 5 (PRU-USA-13, NCT00485940)	12 Weeks
Study 6 (SPD-555-401, NCT01424228)	24 Weeks

Eligible patients required a history of chronic constipation defined as having fewer than 3 spontaneous bowel movements (SBMs) per week that resulted in a feeling of complete evacuation (complete, spontaneous bowel movement [CSBM]) and 1 or more of the following symptoms for greater than 25% of bowel movements in the preceding 3 months, with symptoms onset more than 6 months prior to screening:

- Lumpy or hard stools
- Sensation of incomplete evacuation
- Straining at defecation

Patients who never had SBMs were eligible. In Study 1, eligibility also included sensation of ano-rectal obstruction or blockade or the need for digital manipulation in more than 25% of bowel movements. In all studies, patients were excluded if constipation was due to secondary causes or suspected to be drug-induced.

Efficacy was assessed using information provided by patients in a daily diary.

Primary Efficacy Results

For the primary efficacy endpoint, a responder was defined as a patient with an average of 3 or more CSBMs per week, over the 12-week treatment period. In the Intent-to-Treat [ITT] population in the 6 trials, 1237 received prucalopride tablets 1 or 2 mg and 1247 received placebo. Table 4 summarizes the results.

Table 4: Efficacy Responder Rates in Placebo-Controlled Studies of CIC: Proportion of Patients with an Average Weekly Frequency of ≥ 3 CSBMs per Week over 12 Weeks of Treatment (ITT Population)

Study	Prucalopride tablets 1 or 2 mg Once Daily		Placebo		Treatment Difference (95% CI)	p value
	N	n (%)	N	n (%)		
Study 1	249	83 (33)	252	26 (10)	23 (16, 30)	p<0.001
Study 2	177	67 (38)	181	32 (18)	20 (11, 29)	p<0.001
Study 3	236	46 (19)	240	23 (10)	10 (4, 16)	p=0.002
Study 4	190	55 (29)	193	25 (13)	16 (8, 24)	p<0.001
Study 5	214	50 (24)	212	25 (12)	12 (4, 19)	p<0.001
Study 6	171	43 (25)	169	34 (20)	5 (-4, 14)	p=0.341

p-value based on a Cochran-Mantel- Haenszel test

N = number of patients per treatment group

n = number of responders

In all studies, improvement in the frequency of CSBMs/week was seen as early as week 1 and was maintained through week 12.

Across the six studies, the median time to first CSBM after dosing of prucalopride tablets on day 1 ranged from 1.4 to 4.7 days compared with 9.1 to 20.6 days in the placebo group. The median time to first SBM after dosing on day 1 ranged from 0.1 to 0.4 days in the prucalopride tablets group compared with 1.0 to 1.6 days in the placebo group.

Alternative Efficacy Endpoint

Using an alternative efficacy endpoint, a responder was defined as a patient who had at least 3 CSBMs and an increase of at least 1 CSBM from baseline in a given week for at least 9 weeks out of the 12-week treatment period and for at least 3 of the last 4 weeks of the treatment period. The differences in response rates between prucalopride tablets and placebo in the 6 studies are shown in Table 5.

Table 5: Efficacy Responder Rates in Placebo-Controlled Studies of CIC - Proportion of Patients with an Average of ≥ 3 CSBMs/week and an Increase of ≥ 1 CSBM per Week for at Least 9 out of the 12 Weeks, Including 3 of the Last 4 Weeks (ITT Population)

Study	Prucalopride tablets 1 or 2 mg Once Daily		Placebo		Treatment Difference (95% CI)
	N	n (%)	N	n (%)	
Study 1	249	65 (26)	252	22 (9)	17 (11, 24)
Study 2	177	57 (32)	181	25 (14)	18 (10, 27)
Study 3	236	30 (13)	240	13 (5)	8 (2, 12)
Study 4	190	37 (19)	193	15 (8)	11 (5, 18)
Study 5	214	34 (16)	212	11 (5)	11 (5, 16)
Study 6	171	29 (17)	169	22 (13)	4 (-4, 12)

CSBM = complete spontaneous bowel movement

N = number of patients per treatment group

n = number of responders

16 HOW SUPPLIED/STORAGE AND HANDLING

Prucalopride tablets containing 1 mg prucalopride are white, round, biconvex film-coated tablets debossed with "P1" on one side and no debossing on the other side. They are

supplied as:

- NDC 0406-6301-03: HDPE bottle of 30 tablets, with child-resistant closure.

Prucalopride tablets containing 2 mg prucalopride are pink, round, biconvex film-coated tablets debossed with "P2" on one side and no debossing on the other side. They are supplied as:

- NDC 0406-6302-03: HDPE bottle of 30 tablets, with child-resistant closure.

Store prucalopride tablets at 20°C to 25°C (68°F to 77°F); excursions permitted between 15°C to 30°C (between 59°F to 86°F) [see USP Controlled Room Temperature].

Store prucalopride tablets in the original container to protect from moisture.

17 PATIENT COUNSELING INFORMATION

Advise the patient to read the FDA-approved patient labeling (Patient Information)

- **Suicidal Ideation and Behavior:** Inform patients, their caregivers, and family members that suicidal ideation and behavior, self-injurious ideation as well as new onset or worsening depression have been reported in patients treated with prucalopride tablets. Advise them to be aware of any unusual changes in mood or behavior, new onset or worsening of depression, or the emergence of suicidal thoughts or behavior. Instruct patients, caregivers, and family members to discontinue prucalopride tablets immediately and contact their healthcare provider if any of these symptoms occur [see *Warnings and Precautions (5.1)*].

Storage

Advise patients to keep prucalopride tablets in the original container to protect from moisture.

804592900

Distributed by:

SpecGx LLC

Webster Groves, MO 63119

For more information call 1-800-778-7898

PATIENT INFORMATION

PRUCALOPRIDE (proo-kal-oh-pride)
tablets, for oral use

What is prucalopride tablets?

Prucalopride tablets is a prescription medicine used in adults to treat a type of constipation called chronic idiopathic constipation (CIC). Idiopathic means the cause of the constipation is unknown.

It is not known if a prucalopride tablet is safe and effective in children.

Do not take prucalopride tablets if you:

- are allergic to prucalopride tablets. Allergic reaction symptoms may include trouble breathing, rash, itching and swelling of your face, lips, tongue or throat.
- have a tear in your stomach or intestinal wall (bowel perforation), a bowel blockage (intestinal obstruction) or serious conditions of the intestinal wall such as Crohn's disease or ulcerative colitis.

Before taking prucalopride tablets, tell your healthcare provider about all of your medical conditions, including if you:

- have or have had depression, suicidal thoughts or actions, or mood problems.
- have kidney problems. Your healthcare provider may give you a lower dose of prucalopride tablets.
- are pregnant or plan to become pregnant. It is not known if prucalopride tablets will harm your unborn baby.
- are breastfeeding or plan to breastfeed. Prucalopride tablets can pass into your breastmilk. Talk with your healthcare provider about the best way to feed your baby if you take prucalopride tablets.

Tell your healthcare provider about all the medicines you take, including prescription and over-the-counter medicines, vitamins, and herbal supplements.

How should I take prucalopride tablets?

- Take 1 prucalopride tablet each day or as directed by your healthcare provider.
- Take prucalopride tablets exactly as your healthcare provider tells you to take it.
- Take prucalopride tablets with or without food.

What are the possible side effects of prucalopride tablets? Prucalopride tablets may cause serious side effects, including:

unusual changes in mood or behavior, thoughts of hurting yourself, trying to hurt yourself, or suicide. Stop taking prucalopride tablets right away and tell your healthcare provider immediately if your depression gets worse, you feel sad, hopeless, begin to have thoughts of suicide, thoughts of hurting yourself or you have tried to hurt yourself or if you develop new depression.

The most common side effects of prucalopride tablets include:

- headache
- stomach area (abdominal) pain or bloating
- nausea
- diarrhea
- dizziness
- vomiting
- gas
- fatigue

These are not all the possible side effects of prucalopride tablets.

Call your doctor for medical advice about side effects. You may report side effects to FDA at

1-800-FDA-1088.

How should I store prucalopride tablets?

- Store prucalopride tablets at room temperature between 68°F to 77°F (20°C to 25°C).
- Store prucalopride tablets in the original container to protect from moisture.

Keep PRUCALOPRIDE TABLETS and all medicines out of the reach of children.

General information about the safe and effective use of prucalopride tablets.

Medicines are sometimes prescribed for purposes other than those listed in a Patient Information leaflet. Do not use prucalopride tablets for a condition for which it was not prescribed. Do not give prucalopride tablets to other people, even if they have the same

symptoms that you have. It may harm them. You can ask your pharmacist or healthcare provider for information about prucalopride tablets that is written for health professionals.

What are the ingredients in prucalopride tablets?

Active ingredient: prucalopride

Inactive ingredients: colloidal silicon dioxide, lactose monohydrate, magnesium stearate and microcrystalline cellulose.

The coating contains hypromellose, lactose monohydrate, polyethylene glycol 3350, titanium dioxide and triacetin. The 2 mg tablet also contains ferric oxide red, ferric oxide yellow and Indigotine LK.

Distributed by:

SpecGx LLC

Webster Groves, MO 63119

For more information, call Mallinckrodt at 1-800-778-7898.

Mallinckrodt™

Pharmaceuticals

Issued: July 2024

PRINCIPAL DISPLAY PANEL - 1 mg Tablet

Rx Only

NDC 0406-6301-03

**Prucalopride
Tablets**

1 mg

Usual Dose: One tablet once daily.

30 Tablets

804593000

Rev 07/2024



Store prucalopride tablets at 20°C to 25°C (68°F to 77°F); excursions permitted between 15°C to 30°C (59°F to 86°F) [see USP Controlled Room Temperature]. Store in original container to protect from moisture.

Mfg for: SpecGx LLC
Webster Groves, MO 63119

Mallinckrodt™

Rx Only **NDC 0406-6301-03**

**Prucalopride
Tablets**

1 mg

Usual Dose: One tablet once daily.

30 Tablets

804593000
Rev 07/2024

Each tablet contains:
Prucalopride 1 mg (equivalent to 1.32 mg of prucalopride succinate)
Keep out of the reach of children.
Product of Portugal
Mfg by: Bluepharma –Industria Farmaceutica S.A.
3045-016 Coimbra
Portugal

PRINCIPAL DISPLAY PANEL - 2 mg Tablet

Rx Only

Product Characteristics

Color	white	Score	no score
Shape	ROUND	Size	6mm
Flavor		Imprint Code	P1
Contains			

Packaging

#	Item Code	Package Description	Marketing Start Date	Marketing End Date
1	NDC:0406-6301-03	30 in 1 BOTTLE; Type 0: Not a Combination Product	06/24/2025	

Marketing Information

Marketing Category	Application Number or Monograph Citation	Marketing Start Date	Marketing End Date
ANDA	ANDA219193	06/24/2025	

PRUCALOPRIDE

prucalopride tablet, film coated

Product Information

Product Type	HUMAN PRESCRIPTION DRUG	Item Code (Source)	NDC:0406-6302
Route of Administration	ORAL		

Active Ingredient/Active Moiety

Ingredient Name	Basis of Strength	Strength
PRUCALOPRIDE (UNII: 0A09IUW5TP) (PRUCALOPRIDE - UNII:0A09IUW5TP)	PRUCALOPRIDE	2 mg

Inactive Ingredients

Ingredient Name	Strength
SILICON DIOXIDE (UNII: ETJ7Z6XBU4)	
LACTOSE MONOHYDRATE (UNII: EWQ57Q8I5X)	
MICROCRYSTALLINE CELLULOSE (UNII: OP1R32D61U)	
MAGNESIUM STEARATE (UNII: 70097M6I3O)	
HYPROMELLOSE 2910 (6 MPA.S) (UNII: 0WZ8WG20P6)	
POLYETHYLENE GLYCOL 3350 (UNII: G2M7P15E5P)	
TITANIUM DIOXIDE (UNII: 15FIX9V2JP)	
TRIACETIN (UNII: XHX3C3X673)	
FERRIC OXIDE RED (UNII: 1K09F3G675)	
FERRIC OXIDE YELLOW (UNII: EX438O2MRT)	
FD&C BLUE NO. 2 (UNII: L06K8R7DQK)	

Product Characteristics

Color	pink	Score	no score
Shape	ROUND	Size	8mm
Flavor		Imprint Code	P2
Contains			

Packaging

#	Item Code	Package Description	Marketing Start Date	Marketing End Date
1	NDC:0406-6302-03	30 in 1 BOTTLE; Type 0: Not a Combination Product	06/24/2025	

Marketing Information

Marketing Category	Application Number or Monograph Citation	Marketing Start Date	Marketing End Date
ANDA	ANDA219193	06/24/2025	

Labeler - SpecGx LLC (080679498)

Revised: 7/2024

SpecGx LLC