

**CARELAND LIDOCAINE 4 PLUS MENTHOL PAIN RELIEVING GEL-PATCHES WITH BORDER FOR KNEE- menthol, laurocapram patch
Planet (Anhui) Pharmaceutical Co., Ltd.**

Careland Lidocaine 4% plus menthol pain relieving gel-patches with border for knee

DRUG FACTS

Active ingredients

Lidocaine 4.0%

Menthol 1.0%

Purpose

Topical analgesic

Use

For temporary relief of pain

WARNINGS

For external use only

Do not use

- more than 1 patch at a time
- on wounds or damaged skin
- with a heating pad
- if you are allergic to any ingredients of this product

When using this product

- use only as directed
- do not bandage tightly
- avoid contact with the eyes, mucous membranes, or rashes

Stop use and ask a doctor if

- symptoms persist for more than 7 days
- conditions worsen
- symptoms clear up and occur again within a few days
- localized skin reactions, such as rash, itching, redness, pain, swelling and blistering develop

If pregnant or breast-feeding,

ask a health professional before use

Keep out of reach of children.

If swallowed, get medical help or contact a Poison Control Center right away.

DIRECTIONS

Adults and children 12 years of age and over:

- clean and dry affected area
- remove film from patch and apply to the skin
- apply 1 patch at a time to affected area, not more than 3 to 4 times daily

Children under 12 years of age:consult a doctor

OTHER INFORMATION

- Store in a clean, dry place outside of direct sunlight. Protect product from excessive moisture

INACTIVE INGREDIENTS

Azone,Castor oil,CMC-Na,Dihydroxyaluminum Aminoacetate,Glycerol,Isopropyl Myristate, Kaolin,Poyacrylic Acid,Polysorbate 80,Propylene Glycol,Sorbitol,Sodium Polyacrylate, Tartaric Acid, Titanium Dioxide,Water

1-888-655-1558 Service@getcareland.com

Package Labeling:

PAIN RELIEVING
4% PLUS MENTHOL
LIDOCAINE



LIDOCAINE

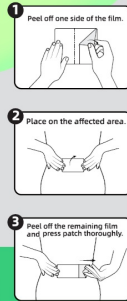
4% PLUS MENTHOL
PAIN RELIEVING
GEL-PATCHES WITH BORDER

FEATURES

- 4% Lidocaine Plus 1.0% Menthol
- Super-Sticky
- Waterproof
- Single Use Application



HOW TO APPLY



Back, Neck, Shoulders, Knees & Elbows

LIDOCAINE PLUS MENTHOL
PAIN RELIEVING
GEL-PATCHES

REF: 2203208

DRUG FACTS	
Active ingredients	Purpose
Lidocaine, 4.0%	Topical anesthetic
Menthol 1.0%	Topical anesthetic
USE For temporary relief of pain	
WARNINGS	Do not use
For external use only	<input type="checkbox"/> more than 1 patch at a time <input type="checkbox"/> with a heating pad <input type="checkbox"/> on wounds or damaged skin <input type="checkbox"/> if you are allergic to any ingredients of this product
When using this product	<input type="checkbox"/> use only as directed <input type="checkbox"/> do not bandage tightly <input type="checkbox"/> avoid contact with the eyes, mucous membranes or surfaces
Stop use and ask a doctor if	<input type="checkbox"/> symptoms persist for more than 7 days <input type="checkbox"/> conditions worsen <input type="checkbox"/> symptoms close up and occur again within a few days <input type="checkbox"/> localized skin reactions, such as rash, itching, redness, pain, swelling and blistering develop
If pregnant or breast feeding, ask a health professional before use.	
Keep out of reach of children. If swallowed, get medical help or contact a Poison Control Center right away.	
DIRECTIONS	
Adults and children 12 years of age and over:	
<input type="checkbox"/> Clean and dry affected area	<input type="checkbox"/> apply 1 patch at a time to affected area, not more than 3 to 4 times daily
<input type="checkbox"/> remove film from patch and apply to the skin	Children under 12 years of age: consult a doctor
OTHER INFORMATION <input type="checkbox"/> Store in a clean, dry place outside of direct sunlight. Protect product from excessive moisture	
INACTIVE INGREDIENTS Atom. Center oil, Zinc-Alu, Dihydroxyaluminum Aminoacetate, Epinephol, Benzocaine, Methylparaben, Potassium Polyoxyethylene Glycol, Polyethylene Glycol, Polyethylene Glycol, Potassium Polyoxyethylene Glycol, Potassium Polyoxyethylene Glycol, Potassium Polyoxyethylene Glycol, Potassium Polyoxyethylene Glycol	
QUESTIONS? 1-888-655-1558 Service@getcareland.com	



20 PATCHES

PAIN RELIEVING PAD SIZE:
3.9"X5.5" (10 CM X14 CM)
PRODUCT SIZE: 5.1"X6.7" 13CM X 17CM

LOT:
EXP:

Manufactured by:
Planet(Anhui) Pharmaceutical Co., Ltd.
No.2056 West Jiahe Road, Hefei Zone, Chuzhou City,
Anhui Province, China



CARELAND LIDOCAINE 4 PLUS MENTHOL PAIN RELIEVING GEL-PATCHES WITH BORDER FOR KNEE

menthol, laurocapram patch

Product Information

Product Type	HUMAN OTC DRUG	Item Code (Source)	NDC:75568-013
Route of Administration	TOPICAL		

Active Ingredient/Active Moiety

Ingredient Name	Basis of Strength	Strength
LIDOCAINE (UNII: 98PI200987) (LIDOCAINE - UNII:98PI200987)	LIDOCAINE	40 mg in 1 g
MENTHOL (UNII: L7T10EIP3A) (MENTHOL - UNII:L7T10EIP3A)	MENTHOL	10 mg in 1 g

Inactive Ingredients

Ingredient Name	Strength
LAUROCAPRAM (UNII: 1F3X9DRV9X)	
CASTOR OIL (UNII: D5340Y219G)	
DIHYDROXYALUMINUM AMINOACETATE (UNII: DO250MG0W6)	
GLYCERIN (UNII: PDC6A3C0OX)	
ISOPROPYL MYRISTATE (UNII: 0RE8K4LNJS)	
KAOLIN (UNII: 24H4NWX5CO)	

POLYSORBATE 80 (UNII: 6OZP39ZG8H)	
PROPYLENE GLYCOL (UNII: 6DC9Q167V3)	
SORBITOL (UNII: 506T60A25R)	
TARTARIC ACID (UNII: W4888I119H)	
TITANIUM DIOXIDE (UNII: 15FIX9V2JP)	
WATER (UNII: 059QF0KO0R)	

Packaging

#	Item Code	Package Description	Marketing Start Date	Marketing End Date
1	NDC:75568-013-01	20 in 1 BOX	08/10/2023	
1		4.56 g in 1 BAG; Type 0: Not a Combination Product		

Marketing Information

Marketing Category	Application Number or Monograph Citation	Marketing Start Date	Marketing End Date
OTC Monograph Drug	M017	08/10/2023	

Labeler - Planet (Anhui) Pharmaceutical Co., Ltd. (618456104)

Establishment

Name	Address	ID/FEI	Business Operations
Planet (Anhui) Pharmaceutical Co., Ltd.		618456104	manufacture(75568-013)

Revised: 7/2024

Planet (Anhui) Pharmaceutical Co., Ltd.