

LUPANETA PACK- leuprolide acetate and norethindrone acetate AbbVie Inc.

HIGHLIGHTS OF PRESCRIBING INFORMATION

These highlights do not include all the information needed to use LUPANETA PACK safely and effectively. See full prescribing information for LUPANETA PACK.

LUPANETA PACK (leuprolide acetate for depot suspension; norethindrone acetate tablets), co-packaged for intramuscular use and for oral use, respectively

Initial U.S. Approval: 2012

----- INDICATIONS AND USAGE -----

LUPANETA PACK contains leuprolide acetate, a gonadotropin-releasing hormone (GnRH) agonist and norethindrone acetate, a progestin, indicated for

- Initial management of the painful symptoms of endometriosis (1)
- Management of recurrence of symptoms (1)

Limitations of Use: Initial treatment course is limited to 6 months and use is not recommended longer than a total of 12 months due to concerns about adverse impact on bone mineral density. (1, 2.1, 5.1)

----- DOSAGE AND ADMINISTRATION -----

- Leuprolide acetate for depot suspension 11.25 mg given by a healthcare provider as a single intramuscular injection every 3 months for up to two injections (6 months of therapy) (2.1)
- Norethindrone acetate 5 mg tablets taken orally by the patient once per day for up to 6 months (2.1)
- If endometriosis symptoms recur after initial course of therapy, consider retreatment for up to another six months (2.1)
- Assess bone density before retreatment begins (2.1, 5.1)
- Reconstitute leuprolide acetate prior to use, see important administration instructions (2.3)

----- DOSAGE FORMS AND STRENGTHS -----

- Leuprolide acetate for depot suspension 11.25 mg syringe (3)
- Norethindrone acetate 5 mg tablets; 90 count bottle (3)

----- CONTRAINDICATIONS -----

- Hypersensitivity to GnRH, GnRH agonist or any of the excipients in leuprolide acetate for depot suspension or norethindrone acetate (4)
- Undiagnosed abnormal uterine bleeding (4)
- Pregnancy or suspected pregnancy (4, 8.1)
- Women who are breast-feeding (4)
- Known, suspected or history of breast or other hormone-sensitive cancer (4)
- Thrombotic or thromboembolic disorders (4)
- Liver tumors or liver disease (4)

----- WARNINGS AND PRECAUTIONS -----

- Loss of bone mineral density: do not use for more than two six-month treatment courses. (1, 2.1, 5.1)
- Exclude pregnancy before starting treatment and discontinue use if pregnancy occurs; use non-hormonal methods of contraception only. (5.2)
- Discontinue in case of sudden loss of vision or onset of proptosis, diplopia or migraine. (5.3)
- Carefully observe patients with history of depression and discontinue the drug if the depression recurs to a serious degree. (5.4)
- Assess and manage risk factors for cardiovascular disease before starting LUPANETA PACK. (5.6)

----- ADVERSE REACTIONS -----

Leuprolide acetate for depot suspension: Most common related adverse reactions (>10%) were hot flashes/sweats, headache/migraine, depression/emotional lability, nausea/vomiting, nervousness/anxiety, insomnia, pain, acne, asthenia, vaginitis, weight gain, constipation/diarrhea (6.1)

Progestins: breakthrough bleeding, spotting (6.1)

To report SUSPECTED ADVERSE REACTIONS, contact AbbVie Inc. at 1-800-633-9110 or FDA at 1-800-FDA-1088 or www.fda.gov/medwatch

----- **USE IN SPECIFIC POPULATIONS** -----

Pediatric: Safety and effectiveness of LUPANETA PACK has not been established in pediatric patients. (8.4)

Geriatric: LUPANETA PACK has not been studied in women over 65 years of age and is not indicated in this population. (8.5)

See 17 for PATIENT COUNSELING INFORMATION and FDA-approved patient labeling.

Revised: 6/2015

FULL PRESCRIBING INFORMATION: CONTENTS*

1 INDICATIONS AND USAGE

2 DOSAGE AND ADMINISTRATION

2.1 Dosing Information

2.2 Different Formulations of Leuprolide Acetate

2.3 Reconstitution and Administration for Injection of Leuprolide Acetate

3 DOSAGE FORMS AND STRENGTHS

4 CONTRAINDICATIONS

5 WARNINGS AND PRECAUTIONS

5.1 Loss of Bone Mineral Density

5.2 Pregnancy Risk

5.3 Visual Abnormalities

5.4 Clinical Depression

5.5 Serious Allergic Reactions

5.6 Cardiovascular and Metabolic Disorders

5.7 Initial Flare of Symptoms

5.8 Fluid Retention

5.9 Convulsions

6 ADVERSE REACTIONS

6.1 Clinical Trials Experience

6.2 Postmarketing Experience

7 DRUG INTERACTIONS

7.1 Drug-Drug Interactions

7.2 Drug/Laboratory Test Interactions

8 USE IN SPECIFIC POPULATIONS

8.1 Pregnancy

8.3 Nursing Mothers

8.4 Pediatric Use

8.5 Geriatric Use

11 DESCRIPTION

12 CLINICAL PHARMACOLOGY

12.1 Mechanism of Action

12.2 Pharmacodynamics

12.3 Pharmacokinetics

13 NONCLINICAL TOXICOLOGY

13.1 Carcinogenesis, Mutagenesis, Impairment of Fertility

14 CLINICAL STUDIES

15 REFERENCES

16 HOW SUPPLIED/STORAGE AND HANDLING

17 PATIENT COUNSELING INFORMATION

* Sections or subsections omitted from the full prescribing information are not listed.

FULL PRESCRIBING INFORMATION

1 INDICATIONS AND USAGE

LUPANETA PACK (leuprolide acetate for depot suspension and norethindrone acetate tablets) is indicated for initial management of the painful symptoms of endometriosis and for management of recurrence of symptoms.

Limitation of Use: Duration of use is limited due to concerns about adverse impact on bone mineral density [see *Warnings and Precautions (5.1)*]. The initial treatment course of LUPANETA PACK is limited to six months. A single retreatment course of not more than six months may be administered after the initial course of treatment if symptoms recur. Use of LUPANETA PACK for longer than a total of 12 months is not recommended.

2 DOSAGE AND ADMINISTRATION

2.1 Dosing Information

LUPANETA PACK is a co-packaging of leuprolide acetate for depot suspension for intramuscular use and norethindrone acetate tablets for oral use. Administer as follows:

- 11.25 mg of leuprolide acetate by intramuscular injection once every three months for up to two injections (6 months of therapy); to be administered by a healthcare provider
- 5 mg of norethindrone acetate orally once daily for up to 6 months of therapy

The initial course of treatment with leuprolide acetate for depot suspension 11.25 mg in combination with norethindrone acetate 5 mg daily is not to exceed six months.

If the symptoms of endometriosis recur after the initial course of therapy, consider retreatment with LUPANETA PACK for up to another six months. It is recommended that bone density be assessed before retreatment begins [see *Warnings and Precautions (5.1)*].

Treatment beyond two six-month courses has not been studied and is not recommended due to concerns about adverse impact on bone mineral density.

2.2 Different Formulations of Leuprolide Acetate

Due to different release characteristics, a fractional dose of the leuprolide acetate for depot suspension 3-month depot formulation is not equivalent to the same dose of the monthly formulation and should not be given.

2.3 Reconstitution and Administration for Injection of Leuprolide Acetate

- Reconstitute and administer the lyophilized microspheres as a single intramuscular injection.
- Inject the suspension immediately or discard if not used within two hours, because leuprolide acetate for depot suspension does not contain a preservative.
 1. Visually inspect the leuprolide acetate for depot suspension powder. DO NOT USE the syringe if clumping or caking is evident. A thin layer of powder on the wall of the syringe is considered normal prior to mixing with the diluent. The diluent should appear clear.
 2. To prepare for injection, screw the white plunger into the end stopper until the stopper begins to turn (see Figure 1 and Figure 2).

Figure 1:

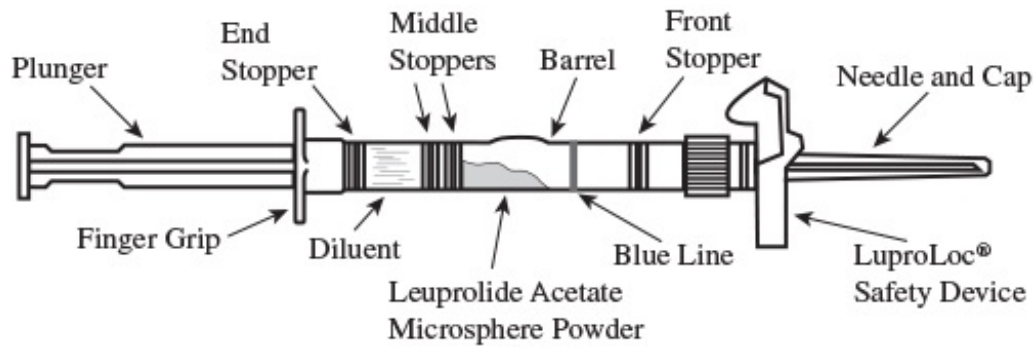
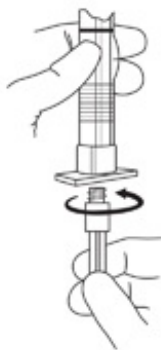
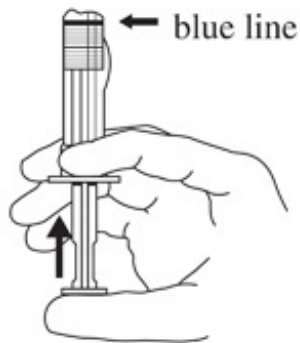


Figure 2:



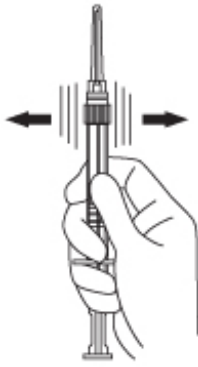
3. Hold the syringe UPRIGHT. Release the diluent by SLOWLY PUSHING (6 to 8 seconds) the plunger until the first middle stopper is at the blue line in the middle of the barrel (see Figure 3).

Figure 3:



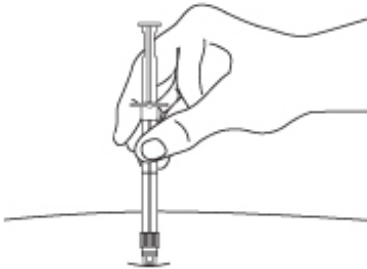
4. Keep the syringe UPRIGHT. Mix the microspheres (powder) thoroughly by gently shaking the syringe until the powder forms a uniform suspension. The suspension will appear milky. If the powder adheres to the stopper or caking/clumping is present, tap the syringe with your finger to disperse. DO NOT USE if any of the powder has not gone into suspension (see Figure 4).

Figure 4:



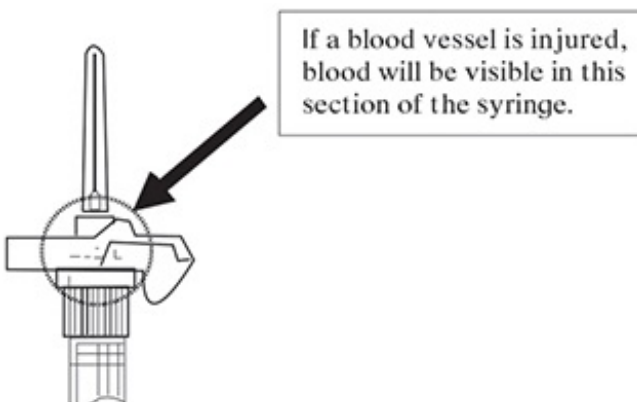
5. Keep the syringe UPRIGHT. With the opposite hand pull the needle cap upward without twisting.
6. Keep the syringe UPRIGHT. Advance the plunger to expel the air from the syringe. Now the syringe is ready for injection.
7. After cleaning the injection site with an alcohol swab, administer the intramuscular injection by inserting the needle at a 90 degree angle into the gluteal area, anterior thigh, or deltoid (see Figure 5).

Figure 5:



NOTE: If a blood vessel is accidentally penetrated, aspirated blood will be visible just below the luer lock (see Figure 6) and can be seen through the transparent LuproLoc safety device. If blood is present, remove the needle immediately. Do not inject the medication.

Figure 6:



8. Inject the entire contents of the syringe intramuscularly.
9. Withdraw the needle. Once the syringe has been withdrawn, immediately activate the LuproLoc[®]

safety device by pushing the arrow on the lock upward towards the needle tip with the thumb or finger, as illustrated, until the needle cover of the safety device over the needle is fully extended and a CLICK is heard or felt (see Figure 7).

Figure 7:



10. Dispose of the syringe according to local regulations/procedures [see References (15)].

3 DOSAGE FORMS AND STRENGTHS

LUPANETA PACK 3-month copackaged kit contains two separate components:

- Leuprolide acetate for depot suspension 11.25 mg for 3-month administration: Leuprolide acetate lyophilized powder for reconstitution with supplied diluent in a prefilled dual chamber syringe
- Norethindrone acetate 5 mg tablets: White to off-white oval, flat-faced beveled edged, uncoated debossed with 'G with breakline' on one side and 304 on other side

4 CONTRAINDICATIONS

LUPANETA PACK is contraindicated in women with the following:

- Hypersensitivity to gonadotropin-releasing hormone (GnRH), GnRH agonist analogs, any of the excipients in leuprolide acetate for depot suspension, or norethindrone acetate
- Undiagnosed abnormal uterine bleeding
- Known, suspected or planned pregnancy during the course of therapy [see Use in Specific Populations (8.1)]
- Lactating women [see Use in Specific Populations (8.3)]
- Known, suspected or history of breast cancer or other hormone-sensitive cancer
- Current or history of thrombotic or thromboembolic disorder
- Liver tumors or liver disease

5 WARNINGS AND PRECAUTIONS

5.1 Loss of Bone Mineral Density

Leuprolide acetate for depot suspension induces a hypoestrogenic state that results in loss of bone mineral density (BMD), some of which may not be reversible. Concurrent use of norethindrone acetate is effective in reducing the loss of BMD that occurs with leuprolide acetate [see Clinical Studies (14)]. Nonetheless, duration of use of LUPANETA PACK is limited to two six-month courses of treatment due to concerns about the adverse impact on BMD. It is recommended that BMD be assessed before retreatment. Retreatments with leuprolide acetate for depot suspension alone is not recommended.

In women with major risk factors for decreased BMD such as chronic alcohol (> 3 units per day) or tobacco use, strong family history of osteoporosis, or chronic use of drugs that can decrease BMD, such as anticonvulsants or corticosteroids, use of LUPANETA PACK may pose an additional risk, and the risks and benefits should be weighed carefully.

5.2 Pregnancy Risk

Leuprolide acetate for depot suspension may cause fetal harm if administered to a pregnant woman. Exclude pregnancy before initiating treatment with LUPANETA PACK. When used at the recommended dose and dosing interval, leuprolide acetate for depot suspension usually inhibits ovulation and stops menstruation. Contraception, however, is not ensured by taking leuprolide acetate for depot suspension. Therefore, patients should use nonhormonal methods of contraception. Advise patients to notify their healthcare provider if they believe they may be pregnant. Discontinue LUPANETA PACK if a patient becomes pregnant during treatment and inform the patient of potential risk to the fetus [*see Contraindications (4) and Use in Specific Populations (8.1)*].

5.3 Visual Abnormalities

Discontinue norethindrone acetate tablets in the LUPANETA PACK pending examination if there is a sudden partial or complete loss of vision or if there is sudden onset of proptosis, diplopia, or migraine. Discontinue LUPANETA PACK if examination reveals papilledema or retinal vascular lesions.

5.4 Clinical Depression

Depression may occur or worsen during treatment with LUPANETA PACK. Carefully observe patients with a history of clinical depression and discontinue LUPANETA PACK if the depression recurs to a serious degree.

5.5 Serious Allergic Reactions

In clinical trials of LUPANETA PACK, adverse events of asthma were reported in women with pre-existing histories of asthma, sinusitis and environmental or drug allergies. Symptoms consistent with an anaphylactoid or asthmatic process have been reported postmarketing.

5.6 Cardiovascular and Metabolic Disorders

Assess and manage risk factors for cardiovascular disease before starting LUPANETA PACK. Closely monitor women on norethindrone acetate who have risk factors for arterial vascular disease (e.g., hypertension, diabetes mellitus, tobacco use, hypercholesterolemia, and obesity) and/or venous thromboembolism (e.g., family history of VTE, obesity, and smoking) when using LUPANETA PACK [*see Contraindications (4)*].

5.7 Initial Flare of Symptoms

Following the first dose of leuprolide acetate, sex steroids temporarily rise above baseline because of the physiologic effect of the drug. Therefore, an increase in symptoms associated with endometriosis may be observed during the initial days of therapy, but these should dissipate with continued therapy.

5.8 Fluid Retention

Because norethindrone acetate may cause some degree of fluid retention, carefully observe women with conditions that might be influenced by this effect, such as epilepsy, migraine, cardiac or renal dysfunctions.

5.9 Convulsions

There have been postmarketing reports of convulsions in patients on leuprolide acetate therapy. These included patients with and without concurrent medications and comorbid conditions.

6 ADVERSE REACTIONS

6.1 Clinical Trials Experience

Because clinical trials are conducted under widely varying conditions, adverse reaction rates observed

in the clinical trials of a drug cannot be directly compared to rates in the clinical trials of another drug and may not reflect the rates observed in clinical practice.

The safety of co-administering leuprolide acetate for depot suspension and norethindrone acetate was evaluated in two clinical studies in which a total of 242 women were treated for up to one year. Women were treated with monthly IM injections of leuprolide acetate 3.75 mg (13 injections) alone or monthly IM injections of leuprolide acetate 3.75 mg (13 injections) and 5 mg norethindrone acetate daily. The population age range was 17-43 years old. The majority of patients were Caucasian (87%).

One study was a controlled clinical trial in which 106 women were randomized to one year of treatment with leuprolide acetate for depot suspension alone or with leuprolide acetate for depot suspension and norethindrone acetate. The other study was an open-label single arm clinical study in 136 women of one year of treatment with leuprolide acetate for depot suspension and norethindrone acetate, with follow-up for up to 12 months after completing treatment.

Adverse Reactions (>1%) Leading to Study Discontinuation:

In the controlled study, 18% of patients treated monthly with leuprolide acetate and 18% of patients treated monthly with leuprolide acetate plus norethindrone acetate discontinued therapy due to adverse reactions, most commonly hot flashes (6%) and insomnia (4%) in the leuprolide acetate alone group and hot flashes and emotional lability (4% each) in the leuprolide acetate and norethindrone group.

In the open label study, 13% of patients treated monthly with leuprolide acetate plus norethindrone acetate discontinued therapy due to adverse reactions, most commonly depression (4%) and acne (2%).

Common Adverse Reactions:

Table 1 lists the adverse reactions observed in at least 5% of patients in any treatment group, during the first 6 months of treatment in the add-back clinical studies, in which patients were treated with monthly leuprolide acetate for depot suspension 3.75 mg with or without norethindrone acetate co-treatment. The most frequently-occurring adverse reactions observed in these studies were hot flashes and headaches.

Table 1. Adverse Reactions Occurring in the First Six Months of Treatment in ≥ 5% of Patients with Endometriosis						
	Controlled Study				Open Label Study	
	LA-Only*		LA/N†		LA/N†	
	N	%	N	%	N	%
Adverse Reactions	N	%	N	%	N	%
Any Adverse Reaction	50	98	53	96	126	93
Body as a Whole						
Asthenia		18		18		11
Headache/Migraine		65		51		46
Injection Site Reaction		2		9		3
Pain		24		29		21
Cardiovascular System						
Hot flashes/Sweats		98		87		57
Digestive System						
Altered Bowel Function (constipation, diarrhea)		14		15		10
Changes in Appetite		4		0		6
GI Disturbance (dyspepsia, flatulence)		4		7		4
Nausea/Vomiting		25		29		13
Metabolic and Nutritional Disorders						
Edema		0		9		7

Weight Gain	12	13	4
Nervous System			
Depression/Emotional Lability	31	27	34
Dizziness/Vertigo	16	11	7
Insomnia/Sleep Disorder	31	13	15
Decreased Libido	10	4	7
Memory Disorder	6	2	4
Nervousness/Anxiety	8	4	11
Neuromuscular Disorder (leg cramps, paresthesia)	2	9	3
Skin and Appendages			
Androgen-Like Effects (acne, alopecia)	4	5	18
Skin/Mucous Membrane Reaction	4	9	11
Urogenital System			
Breast Changes/Pain/Tenderness	6	13	8
Menstrual Disorders	2	0	5
Vaginitis	20	15	8
* LA-Only = leuprolide acetate 3.75 mg			
† LA/N = leuprolide acetate 3.75 mg plus norethindrone acetate 5 mg			

In the controlled clinical trial, 50 of 51 (98%) patients in the leuprolide acetate alone group and 48 of 55 (87%) patients in the leuprolide acetate and norethindrone group reported experiencing hot flashes on one or more occasions during treatment. Table 2 presents hot flash data in the sixth month of treatment.

Table 2. Hot Flashes in the Month Prior to the Assessment Visit (Controlled Study)							
Assessment Visit	Treatment Group	Number of Patients Reporting Hot Flashes		Number of Days with Hot Flashes		Maximum Number Hot Flashes in 24 Hours	
		N	(%)	N²	Mean	N²	Mean
Week 24	LA-Only*	32/37	86	37	19	36	5.8
	LA/N†	22/38	58 ¹	38	7 ¹	38	1.9 ¹
* LA-Only = leuprolide acetate 3.75 mg							
† LA/N = leuprolide acetate 3.75 mg plus norethindrone acetate 5 mg							
¹ Statistically significantly less than the LA-Only group (p<0.01)							
² Number of patients assessed.							

Serious Adverse Reactions:

Urinary tract infection, renal calculus, depression

Changes in Laboratory Values during Treatment:

Liver Enzymes

In the two clinical trials of women with endometriosis, 4 of 191 patients receiving leuprolide acetate and norethindrone acetate for up to 12 months developed an elevated (at least twice the upper limit of normal) SGPT and 2 of 136 developed an elevated GGT. Five of the 6 increases were observed beyond 6 months of treatment. None was associated with an elevated bilirubin concentration.

Lipids

Percent changes from baseline for serum lipids and percentages of patients with serum lipid values outside of the normal range in the two studies of leuprolide acetate and norethindrone acetate are summarized in the tables below. The major impact of adding norethindrone acetate to treatment with

leuprolide acetate for depot suspension was a decrease in serum HDL cholesterol and an increase in the LDL/HDL ratio.

	leuprolide acetate 3.75 mg		leuprolide acetate for depot suspension 3.75 mg plus norethindrone acetate 5 mg daily			
	Controlled Study (n=39)		Controlled Study (n=41)		Open Label Study (n=117)	
	Baseline Value*	Wk 24 % Change	Baseline Value*	Wk 24 % Change	Baseline Value*	Wk 24 % Change
Total Cholesterol	170.5	9.2%	179.3	0.2%	181.2	2.8%
HDL Cholesterol	52.4	7.4%	51.8	-18.8%	51.0	-14.6%
LDL Cholesterol	96.6	10.9%	101.5	14.1%	109.1	13.1%
LDL/HDL Ratio	2.0†	5.0%	2.1†	43.4%	2.3†	39.4%
Triglycerides	107.8	17.5%	130.2	9.5%	105.4	13.8%

* mg/dL
† ratio

Changes from baseline tended to be greater at Week 52. After treatment, mean serum lipid levels from patients with follow up data (105 of 158 patients) returned to pretreatment values.

	leuprolide acetate for depot suspension 3.75 mg plus norethindrone acetate 5 mg daily			
	Controlled Study (n=41)		Open Label Study (n=117)	
	Baseline	Wk 24*	Baseline	Wk 24*
Total Cholesterol (>240 mg/dL)	15%	20%	6%	7%
HDL Cholesterol (<40 mg/dL)	15%	44%	15%	41%
LDL Cholesterol (>160 mg/dL)	5%	7%	9%	11%
LDL/HDL Ratio (>4.0)	2%	15%	7%	21%
Triglycerides (>200 mg/dL)	12%	10%	5%	9%

* Includes all patients regardless of baseline value.

6.2 Postmarketing Experience

The following adverse reactions have been identified during postapproval use of leuprolide acetate for depot suspension or norethindrone acetate. Because these reactions are reported voluntarily from a population of uncertain size, it is not always possible to reliably estimate their frequency or establish a causal relationship to drug exposure.

Leuprolide Acetate for Depot Suspension

During postmarketing surveillance with other dosage forms and in the same or different populations, the following adverse reactions were reported:

- Allergic reactions (anaphylactic, rash, urticaria, and photosensitivity reactions)
- Mood swings, including depression
- Suicidal ideation and attempt
- Symptoms consistent with an anaphylactoid or asthmatic process
- Localized reactions including induration and abscess at the site of injection

- Symptoms consistent with fibromyalgia (e.g., joint and muscle pain, headaches, sleep disorders, gastrointestinal distress, and shortness of breath), individually and collectively

Other adverse reactions reported are:

Hepato-biliary disorder - Serious liver injury

Injury, poisoning and procedural complications - Spinal fracture

Investigations - Decreased white blood count

Musculoskeletal and connective tissue disorder - Tenosynovitis-like symptoms

Nervous System disorder - Convulsion, peripheral neuropathy, paralysis

Vascular disorder - Hypotension, Hypertension

Serious venous and arterial thrombotic and thromboembolic events, including deep vein thrombosis, pulmonary embolism, myocardial infarction, stroke, and transient ischemic attack

Pituitary apoplexy

During post-marketing surveillance, cases of pituitary apoplexy (a clinical syndrome secondary to infarction of the pituitary gland) have been reported after the administration of leuprolide acetate and other GnRH agonists. In a majority of these cases, a pituitary adenoma was diagnosed, with a majority of pituitary apoplexy cases occurring within 2 weeks of the first dose, and some within the first hour. In these cases, pituitary apoplexy has presented as sudden headache, vomiting, visual changes, ophthalmoplegia, altered mental status, and sometimes cardiovascular collapse. Immediate medical attention has been required.

7 DRUG INTERACTIONS

7.1 Drug-Drug Interactions

Leuprolide Acetate for Depot Suspension

No pharmacokinetic-based drug-drug interaction studies have been conducted with leuprolide acetate for depot suspension. However, drug interactions associated with cytochrome P-450 enzymes or protein binding would not be expected to occur [see *Clinical Pharmacology (12.3)*].

Norethindrone Acetate

No pharmacokinetic drug interaction studies investigating any drug-drug interactions with norethindrone acetate have been conducted. Drugs or herbal products that induce or inhibit certain enzymes, including CYP3A4, may decrease or increase the serum concentrations of norethindrone.

7.2 Drug/Laboratory Test Interactions

Leuprolide Acetate for Depot Suspension

Administration of leuprolide acetate for depot suspension in therapeutic doses results in suppression of the pituitary-gonadal system. Normal function is usually restored within three months after treatment is discontinued. Therefore, diagnostic tests of pituitary gonadotropic and gonadal functions conducted during treatment and for up to three months after discontinuation of leuprolide acetate for depot suspension may be affected.

8 USE IN SPECIFIC POPULATIONS

8.1 Pregnancy

Pregnancy Category X – [See *Contraindications (4)*]

Teratogenic Effects

LUPANETA PACK is contraindicated in women who are or may become pregnant while receiving the drug [see *Contraindications (4)*]. Before starting and during treatment with leuprolide acetate for depot suspension, establish whether the patient is pregnant. Leuprolide acetate for depot suspension is not a contraceptive. In reproductively capable women, a non-hormonal method of contraception should be used [see *Warnings and Precautions (5.4)*].

Leuprolide acetate for depot suspension may cause fetal harm when administered to a pregnant woman. When administered on day 6 of pregnancy at test dosages of 0.00024, 0.0024, and 0.024 mg/kg (1/300 to 1/3 of the human dose) to rabbits, leuprolide acetate for depot suspension produced a dose-related increase in major fetal abnormalities. Similar studies in rats failed to demonstrate an increase in fetal malformations. There was increased fetal mortality and decreased fetal weights with the two higher doses of leuprolide acetate for depot suspension in rabbits and with the highest dose (0.024 mg/kg) in rats.

8.3 Nursing Mothers

Do not use LUPANETA PACK in nursing mothers because the effects of leuprolide acetate for depot suspension on lactation and/or the breast-fed child have not been determined.

It is not known whether leuprolide acetate for depot suspension is excreted in human milk.

Detectable amounts of progestins have been identified in the milk of mothers receiving them [see *Contraindications (4)*].

8.4 Pediatric Use

LUPANETA PACK is not indicated in premenarcheal adolescents. Safety and effectiveness of LUPANETA PACK have not been established in pediatric patients. Experience with LUPANETA PACK for treatment of endometriosis has been limited to women 18 years of age and older.

8.5 Geriatric Use

LUPANETA PACK is not indicated in postmenopausal women and has not been studied in women over 65 years of age.

11 DESCRIPTION

LUPANETA PACK (leuprolide acetate for depot suspension; norethindrone acetate tablets) 3-month contains one dual chamber syringe with leuprolide acetate for depot suspension 11.25 mg and norethindrone acetate tablets USP: 5 mg (bottle of 90 tablets).

Leuprolide Acetate for Depot Suspension

Leuprolide acetate for depot suspension is a synthetic nonapeptide analog of gonadotropin-releasing hormone (GnRH or LH-RH), a GnRH agonist. The chemical name is 5-oxo-L-prolyl-L-histidyl-L-tryptophyl-L-seryl-L-tyrosyl-D-leucyl-L-leucyl-L-arginyl-N-ethyl-L-prolinamide acetate (salt) with the following structural formula:

Leuprolide acetate for depot suspension 11.25 mg is available in a prefilled dual-chamber syringe containing sterile lyophilized microspheres which, when mixed with diluent, become a suspension intended as an intramuscular injection.

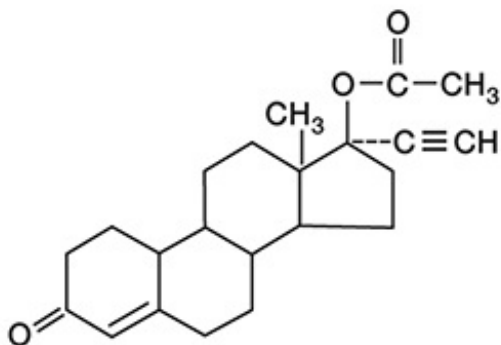
The front chamber of leuprolide acetate for depot suspension 11.25 mg for 3-month administration prefilled dual-chamber syringe contains leuprolide acetate for depot suspension (11.25 mg), polylactic acid (99.3 mg) and D-mannitol (19.45 mg). The second chamber of diluent contains carboxymethylcellulose sodium (7.5 mg), D-mannitol (75 mg), polysorbate 80 (1.5 mg), water for injection, USP, and glacial acetic acid, USP to control pH.

During the manufacture of leuprolide acetate for depot suspension, acetic acid is lost, leaving the peptide.

Norethindrone Acetate

Norethindrone acetate tablets USP - 5 mg oral tablets.

Norethindrone acetate USP, (17-hydroxy-19-nor-17 α -pregn-4-en-20-yn-3-one acetate), a synthetic, orally active progestin, is the acetic acid ester of norethindrone. It is a white, or creamy white, crystalline powder.



Norethindrone acetate tablets USP, 5 mg contain the following inactive ingredients: colloidal silicon dioxide, lactose monohydrate, magnesium stearate, microcrystalline cellulose and talc.

12 CLINICAL PHARMACOLOGY

12.1 Mechanism of Action

Leuprolide Acetate for Depot Suspension

Leuprolide acetate for depot suspension is a long-acting GnRH analog. A single injection of leuprolide acetate for depot suspension results in an initial elevation followed by a prolonged suppression of pituitary gonadotropins. Repeated dosing at quarterly intervals results in decreased secretion of gonadal steroids; consequently, tissues and functions that depend on gonadal steroids for their maintenance become quiescent. This effect is reversible on discontinuation of drug therapy.

Leuprolide acetate is not active when given orally.

Norethindrone Acetate

Norethindrone acetate induces secretory changes in an estrogen-primed endometrium.

12.2 Pharmacodynamics

In a pharmacokinetic/pharmacodynamic study of leuprolide acetate 11.25 mg for 3-month administration

in healthy female subjects (N=20), the onset of estradiol suppression was observed for individual subjects between day 4 and week 4 after dosing. By the third week following the injection, the mean estradiol concentration (8 pg/mL) was in the menopausal range. Throughout the remainder of the dosing period, mean serum estradiol levels ranged from the menopausal to the early follicular range.

Serum estradiol was suppressed to ≤ 20 pg/mL in all subjects within four weeks and remained suppressed (≤ 40 pg/mL) in 80% of subjects until the end of the 12-week dosing interval, at which time two of these subjects had a value between 40 and 50 pg/mL. Four additional subjects had at least two consecutive elevations of estradiol (range 43-240 pg/mL) levels during the 12-week dosing interval, but there was no indication of luteal function for any of the subjects during this period.

12.3 Pharmacokinetics

Absorption

Leuprolide Acetate for Depot Suspension

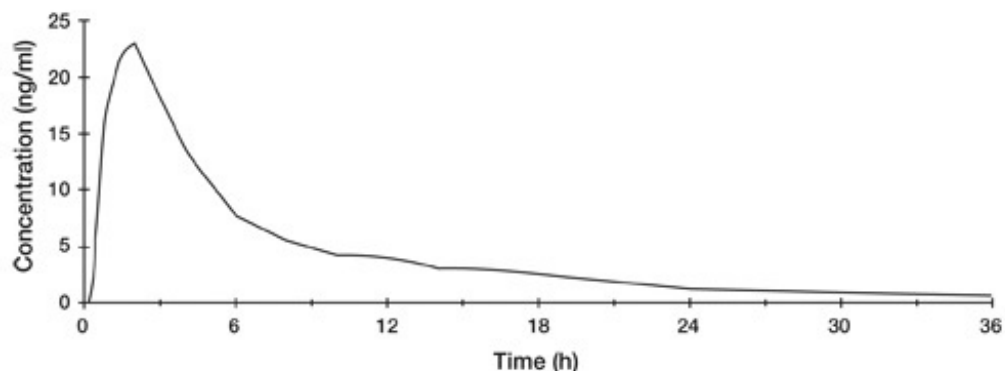
Following a single injection of the three month formulation of leuprolide acetate for depot suspension (11.25 mg) in female subjects, a mean plasma leuprolide concentration of 36.3 ng/mL was observed at 4 hours. Leuprolide appeared to be released at a constant rate following the onset of steady-state levels during the third week after dosing and mean levels then declined gradually to near the lower limit of detection by 12 weeks. The mean (\pm standard deviation) leuprolide concentration from 3 to 12 weeks was 0.23 ± 0.09 ng/mL. However, intact leuprolide and an inactive major metabolite could not be distinguished by the assay which was employed in the study. The initial burst, followed by the rapid decline to a steady-state level, was similar to the release pattern seen with the monthly formulation.

Norethindrone Acetate

Norethindrone acetate is deacetylated to norethindrone after oral administration, and the disposition of norethindrone acetate is indistinguishable from that of orally administered norethindrone. Norethindrone acetate is absorbed from norethindrone acetate tablets, with maximum plasma concentration of norethindrone generally occurring at about 2 hours post-dose (see Figure 8). The pharmacokinetic parameters of norethindrone following single oral administration of 5 mg norethindrone acetate under fasting conditions in 29 healthy female volunteers are summarized in Table 5.

Table 5. Pharmacokinetic Parameters after a Single Dose of Norethindrone Acetate in Healthy Women	
Norethindrone Acetate (n=29)	Arithmetic Mean \pm SD
Norethindrone	
AUC (0-inf) (ng/ml*h)	166.90 \pm 56.28
C _{max} (ng/ml)	26.19 \pm 6.19
t _{max} (h)	1.83 \pm 0.58
t _{1/2} (h)	8.51 \pm 2.19
AUC = area under the curve, C _{max} = maximum plasma concentration, t _{max} = time at maximum plasma concentration, t _{1/2} = half-life, SD = standard deviation	

Figure 8. Mean Norethindrone Plasma Concentration Profile after a Single Dose of 5 mg Norethindrone Acetate Administered to 29 Healthy Female Volunteers under Fasting Conditions



Effect of Food:

The effect of food administration on the pharmacokinetics of norethindrone acetate has not been studied.

Distribution

Leuprolide Acetate for Depot Suspension

The mean steady-state volume of distribution of leuprolide following intravenous bolus administration to healthy male volunteers was 27 L. *In vitro* binding to human plasma proteins ranged from 43% to 49%.

Norethindrone Acetate

Norethindrone is 36% bound to sex hormone-binding globulin (SHBG) and 61% bound to albumin. Volume of distribution of norethindrone is about 4 L/kg.

Metabolism

Leuprolide Acetate for Depot Suspension

In healthy male volunteers, a 1 mg bolus of leuprolide administered intravenously revealed that the mean systemic clearance was 7.6 L/h, with a terminal elimination half-life of approximately 3 hours based on a two compartment model.

In rats and dogs, administration of ¹⁴C-labeled leuprolide was shown to be metabolized to smaller inactive peptides, a pentapeptide (Metabolite I), tripeptides (Metabolites II and III) and a dipeptide (Metabolite IV). These fragments may be further catabolized.

In a pharmacokinetic/pharmacodynamic study of endometriosis patients, intramuscular 11.25 mg leuprolide acetate for depot suspension (n=19) every 12 weeks or intramuscular 3.75 mg leuprolide acetate for depot suspension (n=15) every 4 weeks was administered for 24 weeks. There was no statistically significant difference in changes of serum estradiol concentration from baseline between the 2 treatment groups.

M-I plasma concentrations measured in 5 prostate cancer patients reached maximum concentration 2 to 6 hours after dosing and were approximately 6% of the peak parent drug concentration. One week after dosing, mean plasma M-I concentrations were approximately 20% of mean leuprolide concentrations.

Norethindrone Acetate

Norethindrone undergoes extensive biotransformation, primarily via reduction, followed by sulfate and glucuronide conjugation. The majority of metabolites in the circulation are sulfates, with glucuronides accounting for most of the urinary metabolites.

Excretion

Leuprolide Acetate for Depot Suspension

Following administration of leuprolide acetate for depot suspension 3.75 mg for 1-month administration to 3 patients, less than 5% of the dose was recovered as parent and M-I metabolite in the urine.

Norethindrone Acetate

Plasma clearance value for norethindrone is approximately 0.4 L/hr/kg. Norethindrone is excreted in both urine and feces, primarily as metabolites. The mean terminal elimination half-life of norethindrone following a single dose administration of norethindrone acetate is approximately 9 hours.

Specific Populations

Hepatic Impairment

The effect of hepatic disease on the disposition of norethindrone after norethindrone acetate administration has not been evaluated. However, norethindrone acetate is contraindicated in markedly impaired liver function or liver disease [see *Contraindications (4)*].

The pharmacokinetics of the leuprolide acetate for depot suspension in hepatically impaired patients has not been determined.

Renal Impairment

The effect of renal disease on the disposition of norethindrone after norethindrone acetate administration has not been evaluated. In pre-menopausal women with chronic renal failure undergoing peritoneal dialysis who received multiple doses of an oral contraceptive containing ethinyl estradiol and norethindrone, plasma norethindrone concentration was unchanged compared to concentrations in pre-menopausal women with normal renal function.

The pharmacokinetics of the leuprolide acetate for depot suspension in renally impaired patients has not been determined.

Race

The effect of race on the disposition of norethindrone after norethindrone acetate administration has not been evaluated.

Drug Interactions

Leuprolide Acetate for Depot Suspension

Leuprolide acetate for depot suspension is a peptide that is primarily degraded by peptidase and not by cytochrome P-450 enzymes as noted in specific studies, and the drug is only about 46% bound to plasma proteins, drug interactions would not be expected to occur.

13 NONCLINICAL TOXICOLOGY

13.1 Carcinogenesis, Mutagenesis, Impairment of Fertility

Leuprolide Acetate for Depot Suspension

A two-year carcinogenicity study was conducted in rats and mice. In rats, a dose-related increase of benign pituitary hyperplasia and benign pituitary adenomas was noted at 24 months when the drug was administered subcutaneously at high daily doses (0.6 to 4 mg/kg). There was a significant but not dose-related increase of pancreatic islet-cell adenomas in females and of testicular interstitial cell adenomas in males (highest incidence in the low dose group). In mice, no leuprolide acetate-induced tumors or pituitary abnormalities were observed at a dose as high as 60 mg/kg for two years. Patients have been treated with leuprolide acetate for up to three years with doses as high as 10 mg/day and for two years with doses as high as 20 mg/day without demonstrable pituitary abnormalities.

Mutagenicity studies have been performed with leuprolide acetate using bacterial and mammalian systems. These studies provided no evidence of a mutagenic potential.

Clinical and pharmacologic studies in adults (> 18 years) with leuprolide acetate and similar analogs have shown reversibility of fertility suppression when the drug is discontinued after continuous administration for periods of up to 24 weeks. Although no clinical studies have been completed in

children to assess the full reversibility of fertility suppression, animal studies (prepubertal and adult rats and monkeys) with leuprolide acetate and other GnRH analogs have shown functional recovery.

14 CLINICAL STUDIES

Leuprolide Acetate for Depot Suspension

Initial endometriosis efficacy data for leuprolide acetate for depot suspension were based on the 3.75 mg dose administered once monthly.

A pharmacokinetic/pharmacodynamic study in 41 women that included both the 3.75 mg dose administered once monthly and the 11.25 mg dose administered once every three months did not reveal clinically significant differences in terms of efficacy in reducing painful symptoms of endometriosis or magnitude of the decrease in bone mineral density (BMD) associated with use of leuprolide acetate.

Leuprolide Acetate for Depot Suspension Plus Norethindrone Acetate

Two clinical studies with treatment duration of 12 months were conducted to evaluate the effect of coadministration of leuprolide acetate for depot suspension and norethindrone acetate on the loss of bone mineral density (BMD) associated with leuprolide acetate for depot suspension and on the efficacy of leuprolide acetate for depot suspension in relieving symptoms of endometriosis. (All patients in these studies received calcium supplementation with 1000 mg elemental calcium). A total of 242 women were treated with monthly administration of leuprolide acetate 3.75 mg (13 injections) and with 5 mg norethindrone acetate taken daily. The population age range was 17-43 years old. The majority of patients were Caucasian (87%).

One coadministration study was a controlled, randomized and double-blind study included 51 women treated monthly with leuprolide acetate for depot suspension alone and 55 women treated monthly with leuprolide acetate for depot suspension plus norethindrone acetate daily. Women in this trial were followed for up to 24 months after completing one year of treatment. The other study was an open-label single arm clinical study in 136 women of one year of treatment with leuprolide acetate for depot suspension and norethindrone acetate, with follow-up for up to 12 months after completing treatment.

The second study was an open label, single arm study in which 136 women were treated monthly with leuprolide acetate for depot suspension plus norethindrone acetate daily, with follow-up for up to 12 months after completing treatment.

The assessment of efficacy was based on the investigator's or the patient's monthly assessment of five signs or symptoms of endometriosis (dysmenorrhea, pelvic pain, deep dyspareunia, pelvic tenderness and pelvic induration).

Table 6 below provides detailed efficacy data regarding relief of symptoms of endometriosis based on the two studies of coadministration of leuprolide acetate and norethindrone acetate.

			Percent of Patients with Symptom			Clinical Pain Severity Score		
			Baseline	Final		Baseline	Final	
Variable	Study	Group	N ¹	(%) ²	(%)	N ¹	Value ³	Change
Dysmenorrhea	Controlled Study	LA*	51	(100)	(4)	50	3.2	-2.0
		LA/N†	55	(100)	(4)	54	3.1	-2.0
	Open Label Study	LA/N	136	(99)	(9)	134	3.3	-2.1
	Controlled	LA	51	(100)	(6)	50	3.2	-1.1

Pelvic Pain	Study	LA	51	(100)	(60)	50	2.9	-1.1
		LA/N	55	(96)	(56)	54	3.1	-1.1
	Open Label Study	LA/N	136	(99)	(63)	134	3.2	-1.2
Deep Dyspareunia	Controlled Study	LA	42	(83)	(37)	25	2.4	-1.0
		LA/N	43	(84)	(45)	30	2.7	-0.8
	Open Label Study	LA/N	102	(91)	(53)	94	2.7	-1.0
Pelvic Tenderness	Controlled Study	LA	51	(94)	(34)	50	2.5	-1.0
		LA/N	54	(91)	(34)	52	2.6	-0.9
	Open Label Study	LA/N	136	(99)	(39)	134	2.9	-1.4
Pelvic Induration	Controlled Study	LA	51	(51)	(12)	50	1.9	-0.4
		LA/N	54	(46)	(17)	52	1.6	-0.4
	Open Label Study	LA/N	136	(75)	(21)	134	2.2	-0.9
* LA = leuprolide acetate 3.75 mg assessment								
† LA/N = leuprolide acetate 3.75 mg plus norethindrone acetate 5 mg								
¹ Number of patients that were included in the assessment								
² Percentage of patients with the symptom/sign								
³ Value description: 1=none; 2= mild; 3= moderate; 4= severe								

Suppression of menses (menses was defined as three or more consecutive days of menstrual bleeding) was maintained throughout treatment in 84% and 73% of patients receiving leuprolide acetate and norethindrone acetate, in the controlled study and open label study, respectively. The median time for menses resumption after treatment with leuprolide acetate and norethindrone acetate was 8 weeks.

Changes in Bone Density

The effect of leuprolide acetate for depot suspension and norethindrone acetate on bone mineral density was evaluated by dual energy x-ray absorptiometry (DXA) scan in the two clinical trials. For the open-label study, success in mitigating BMD loss was defined as the lower bound of the 95% confidence interval around the change from baseline at one year of treatment not to exceed -2.2%. The bone mineral density data of the lumbar spine from these two studies are presented in Table 7.

	leuprolide acetate for depot suspension 3.75 mg			leuprolide acetate for depot suspension 3.75 mg plus norethindrone acetate 5 mg daily		
		Controlled Study		Controlled Study		Open Label Study
	N	Change (Mean, 95% CI)#	N	Change (Mean, 95% CI)#	N	Change (Mean, 95% CI)#
Week 24*	41	-3.2% (-3.8, -2.6)	42	-0.3% (-0.8, 0.3)	115	-0.2% (-0.6, 0.2)
Week 52†	29	-6.3% (-7.1, -5.4)	32	-1.0% (-1.9, -0.1)	84	-1.1% (-1.6, -0.5)

* Includes on-treatment measurements that fell within 2-252 days after the first day of treatment.

† Includes on-treatment measurements >252 days after the first day of treatment.
 # 95% CI: 95% Confidence Interval

The change in BMD following discontinuation of treatment is shown in Table 8.

Table 8. Mean Percent Change from Baseline in BMD of Lumbar Spine in Post-Treatment Follow-up Period									
Post Treatment Measurement	Controlled Study						Open Label Study		
	LA-Only			LA/N			LA/N		
	N	Mean % Change	95% CI (%)	N	Mean % Change	95% CI (%)	N	Mean % Change	95% CI (%)²
Month 8	19	-3.3	(-4.9, -1.8)	23	-0.9	(-2.1, 0.4)	89	-0.6	(-1.2, 0.0)
Month 12	16	-2.2	(-3.3, -1.1)	12	-0.7	(-2.1, 0.6)	65	0.1	(-0.6, 0.7)

¹ Patients with post treatment measurements
² 95% CI (2-sided) of percent change in BMD values from baseline

These clinical studies demonstrated that coadministration of leuprolide acetate and norethindrone acetate 5 mg daily is effective in significantly reducing the loss of bone mineral density that occurs with leuprolide acetate for depot suspension treatment, and in relieving symptoms of endometriosis.

15 REFERENCES

Leuprolide Acetate for Depot Suspension

1. NIOSH Alert: Preventing occupational exposures to antineoplastic and other hazardous drugs in healthcare settings. 2004. U.S. Department of Health and Human Services, Public Health Service, Centers for Disease Control and Prevention, National Institute for Occupational Safety and Health, DHHS (NIOSH) Publication No. 2004-165.
2. OSHA Technical Manual, TED 1-0.15A, Section VI: Chapter 2. Controlling Occupational Exposure to Hazardous Drugs. OSHA, 1999. http://www.osha.gov/dts/osta/otm/otm_vi/otm_vi_2.html
3. American Society of Health-System Pharmacists. ASHP guidelines on handling hazardous drugs. *Am J Health-Syst Pharm.* 2006; 63; 1172-1193.
4. Polovich, M., White, J.M., & Kelleher, L.O. (eds.) 2005. *Chemotherapy and biotherapy guidelines and recommendations for practice* (2nd. Ed.) Pittsburgh, PA: Oncology Nursing Society.

16 HOW SUPPLIED/STORAGE AND HANDLING

LUPANETA PACK for 3-month copackaged kit (NDC 0074-1053-05) is available in cartons containing:

leuprolide acetate for depot suspension 11.25 mg for 3-month administration Kit (NDC 0074-3663-04)
 norethindrone acetate 5 mg tablets; 90 count bottle (NDC 0074-1049-04)

1. Leuprolide acetate for depot suspension 11.25 mg for 3-month administration kit contains:
 - one prefilled dual-chamber syringe
 - one plunger
 - two alcohol swabs

Each syringe contains sterile lyophilized microspheres of leuprolide acetate incorporated in a biodegradable polymer of polylactic acid. When mixed with 1.5 mL of the diluent, leuprolide acetate for depot suspension 11.25 mg for 3-month administration is administered as a single intramuscular injection.

2. Norethindrone acetate 5 mg 90 count bottle

White to off-white oval, flat faced beveled edged, uncoated tablets debossed with 'G with breakline' on one side and 304 on other side.

Store at 25°C (77°F); excursions permitted to 15 to 30°C (59 to 86°F) [See USP Controlled Room Temperature]

17 PATIENT COUNSELING INFORMATION

See FDA-approved patient labeling (Patient Information)

Counsel patients about the Warnings and Precautions for LUPANETA PACK, including:

- Do not use this drug if they have experienced an allergic reaction to GnRH agonists or progestins
- Do not use this drug if they are pregnant or planning a pregnancy, suspect they may be pregnant, or are breastfeeding
- Risk of loss of bone mineral density and limitation of treatment to two six-month courses of treatment
- Risk to an exposed fetus and need to use nonhormonal contraception
- Discontinue norethindrone if they develop sudden loss of vision, double vision or sudden migraine
- The possibility of development or worsening of depression during treatment with leuprolide acetate for depot suspension
- Need for close monitoring if they have cardiovascular risk factors, or conditions like epilepsy, migraine or renal dysfunction
- Notify their healthcare provider if they develop new or worsened symptoms after beginning treatment

Leuprolide Acetate for Depot Suspension 11.25 mg:

Manufactured for

AbbVie Inc.

North Chicago, IL 60064

by Takeda Pharmaceutical Company Limited

Osaka, Japan 540-8645

Norethindrone acetate

Manufactured for

AbbVie Inc.

North Chicago, IL 60064

Manufactured by

Glenmark Pharmaceuticals Ltd.

Colvale-Bardez, Goa

403 513, India

LUPANETA PACK

Packaged by:

AbbVie Inc.

North Chicago, IL 60064

Revised 6/2015

PATIENT INFORMATION

LUPANETA PACK® (loo-pan-e-tī pæk) (leuprolide acetate for depot suspension and norethindrone acetate tablets)

Read this Patient Information before you start taking LUPANETA PACK and each time you get a refill. There may be new information. This information does not take the place of talking with your doctor about your medical condition or your treatment.

What is LUPANETA PACK?

LUPANETA PACK contains 2 different prescription medicines:

- **leuprolide acetate for depot suspension** is a medicine injected into your muscle and used to treat pain due to endometriosis.
- **norethindrone acetate tablets** is a medicine taken by mouth and used to help lower the side effect of bone thinning that is caused by leuprolide acetate for depot suspension.

LUPANETA PACK should not be used longer than 6 months at a time after you first start treatment for your endometriosis symptoms. LUPANETA PACK should not be used for more than a total of 12 months during your treatment.

It is not known if LUPANETA PACK is safe and effective in children under 18 years of age.

Who should not take LUPANETA PACK?

Do not take LUPANETA PACK if you:

- have had an allergic reaction to medicines like leuprolide acetate for depot suspension or norethindrone acetate tablets. See the end of this leaflet for a complete list of ingredients in LUPANETA PACK.
- have uterine bleeding for which a cause has not been found
- are pregnant or may be pregnant. LUPANETA PACK may harm your unborn baby.
- are breastfeeding or plan to breastfeed. It is not known if LUPANETA PACK passes into your breast milk.
- had or have breast cancer or other cancers that are sensitive to hormones
- have problems with blood clots, a stroke or a heart attack.
- have liver problems

What should I tell my doctor before taking LUPANETA PACK?

Before you take LUPANETA PACK, tell your doctor if you:

- drink alcohol
- have a family history of bone loss (osteoporosis)
- have high cholesterol
- have migraine headaches
- have epilepsy
- smoke
- have depression
- have had blood clots, a stroke or a heart attack
- have diabetes
- have kidney problems

Tell your doctor about all the medicines you take, including prescription and non-prescription medicines, vitamins, and herbal supplements.

Especially tell your doctor if you take anticonvulsant (seizure) or corticosteroid medicines.

Ask your doctor for a list of these medicines if you are not sure.

Know the medicines you take. Keep a list of them to show your doctor and pharmacist when you get a new medicine.

How should I take LUPANETA PACK?

- **Leuprolide acetate for depot suspension** for 3-month administration is injected into your muscle 1 time every 3 months by a healthcare professional in your doctor's office.
- **Take norethindrone acetate tablets** exactly as your doctor tells you to take them. Take 1 norethindrone acetate tablet by mouth every day for 3 months after you receive your injection.
- Talk to your doctor about the birth control method that is right for you before you start taking LUPANETA PACK. You will need to use a form of birth control that does not contain hormones, such as:
 - a diaphragm with spermicide
 - condoms with spermicide
 - a copper IUD
- If you become pregnant while taking LUPANETA PACK, stop taking the norethindrone acetate tablets and call your doctor right away.

How well does LUPANETA PACK work?

LUPANETA PACK is used to treat pain due to endometriosis. The pain from endometriosis can happen when you have your period, during other times of the month, or during intercourse (sex). Most women feel some relief from their endometriosis pain after taking both drugs in LUPANETA PACK.

The tablets in LUPANETA PACK help lower the side effect of bone thinning that is caused by leuprolide acetate for depot suspension. Women taking both drugs in LUPANETA PACK lost an average of 1% of their bone density after about 1 year of treatment. Women regained some of their bone density about 1 year after they stopped treatment with LUPANETA PACK.

What are the possible side effects of LUPANETA PACK?

LUPANETA PACK may cause serious side effects, including:

- **bone thinning (decreased bone mineral density)**
- **harm to your unborn baby**
- **vision problems.** Call your doctor right away if you have sudden loss of vision, double vision, bulging eyes, or migraine headaches.
- **depression or worsening depression**
- **allergic reactions.** Get medical help right away if you have any of these symptoms of a serious allergic reaction:
 - swelling of your face, lips, mouth, or tongue
 - trouble breathing
 - wheezing
 - severe itching
 - skin rash, redness, or swelling
 - dizziness or fainting
 - fast heartbeat or pounding in your chest (tachycardia)
 - sweating
- **worsening endometriosis symptoms when you start taking LUPANETA PACK**
- **swelling (fluid retention)**

The most common side effects of LUPANETA PACK include:

- hot flashes and sweats
- headaches or migraine headaches

- depression and mood swings
- nausea and vomiting
- problems sleeping
- nervousness or feeling anxious
- pain
- acne
- weakness
- vaginal infection or inflammation
- weight gain
- constipation or diarrhea

Tell your doctor if you have any side effect that bothers you or that does not go away.

These are not all the possible side effects of LUPANETA PACK. For more information, ask your doctor or pharmacist.

Call your doctor for medical advice about side effects. You may report side effects to FDA at 1-800-FDA-1088.

How should I store norethindrone acetate tablets in the LUPANETA PACK?

- Store norethindrone acetate tablets at room temperature between 68°F to 77°F (20°C to 25°C).

Keep LUPANETA PACK and all medicines out of the reach of children.

General information about the safe and effective use of LUPANETA PACK.

Medicines are sometimes prescribed for purposes other than those listed in a Patient Information leaflet. Do not use LUPANETA PACK for a condition for which it was not prescribed. Do not give LUPANETA PACK to other people, even if they have the same symptoms that you have. It may harm them.

This Patient Information leaflet summarizes the most important information about LUPANETA PACK. If you would like more information, talk with your doctor. You can ask your pharmacist or doctor for information about LUPANETA PACK that is written for health professionals.

For more information, go to www.lupanetapack.com or call 1-800-633-9110.

What are the ingredients in LUPANETA PACK?

leuprolide acetate for depot suspension:

Active Ingredients: leuprolide acetate for depot suspension

Inactive Ingredients: polylactic acid, D-mannitol, carboxymethylcellulose sodium, polysorbate 80, water for injection, USP, and glacial acetic acid, USP

norethindrone acetate tablets:

Active Ingredients: norethindrone acetate USP

Inactive Ingredients: colloidal silicon dioxide, lactose monohydrate, magnesium stearate, microcrystalline cellulose and talc.

This Patient Information has been approved by the U.S. Food and Drug Administration.

Leuprolide Acetate for Depot Suspension:

Manufactured for

AbbVie Inc.

North Chicago, IL 60064

By Takeda Pharmaceutical Company Limited

Osaka, Japan 540-8645

Norethindrone acetate:

Manufactured for
AbbVie Inc.
North Chicago, IL 60064

By Glenmark Pharmaceuticals Ltd.
Colvale-Bardez, Goa
403 513, India

03-B184 June, 2015

NDC 0074–1053–05

3–MONTH

Lupaneta Pack™

leuprolide acetate for depot suspension, 11.25 mg for intramuscular injection only and norethindrone acetate tablets, 5 mg for oral administration

This Package Contains:

- 1 Kit Lupron Depot 3–month 11.25 mg, NDC 0074–3663–04

Each Lupron Depot 3–month 11.25 mg Kit contains

One pre-filled dual-chamber syringe containing needle with LuproLoc safety device • One plunger • Two alcohol swabs.

The Front chamber of the syringe contains: leuprolide acetate 11.25 mg • polylactic acid 99.3 mg • D-mannitol 19.45 mg.

The second chamber contains:

D-mannitol 75 mg • carboxymethylcellulose sodium 7.5 mg • polysorbate 80 1.5 mg • water for injection USP and glacial acetic acid USP to control pH.

Do not remove from clamshell until ready to use.

Usual dose: After mixing immediately administer entire contents of syringe by intramuscular injection every three months under physician's supervision.

See package insert for full prescribing information.

If removed from this Kit carton, Store at 25°C (77°F). Excursions permitted to 15–30°C (59–86°F)

Only activate safety Device Post-Injection

Not made with natural rubber latex.

- 1 Bottle-Norethindrone Acetate Tablets USP, 5 mg 90 Tablets. NDC 0074–1049–04

Usual dose: 5 mg (one tablet) orally once daily for 3 months. See package insert for full prescribing information. If removed from this Kit carton, Store at 20–25°C (68–77°F). Dispense in well closed containers

For 3 MONTH ADMINISTRATION FOR ADULT USE ONLY

Store at 25°C (77°F), excursions permitted to 15–30°C (59–86°F) [See USP Controlled Room Temperature].

Rx only abbvie

3-MONTH

Lupaneta Pack™

leuprolide acetate for depot suspension,
11.25 mg for intramuscular injection only
and norethindrone acetate tablets, 5 mg for oral administration

leuprolide acetate for depot suspension,
11.25 mg for intramuscular injection only
and norethindrone acetate tablets, 5 mg for oral administration

Lupaneta Pack™

3-MONTH

Place Holder for
2D Barcode
Exp:
Lot:
SN:



19-B741-93
Norethindrone Acetate
Lupron Depot
AbbVie Inc.
North Chicago, Illinois 60064
Product of Japan

3-MONTH

NDC 6301-1063-05

Lupaneta Pack™

leuprolide acetate for depot suspension, 11.25 mg for intramuscular injection only
and norethindrone acetate tablets, 5 mg for oral administration

This Package Contains:
• 1 Kit Lupron Depot 3-month 11.25 mg, NDC 0074-3663-04
Each Lupron Depot 3-month 11.25 mg kit contains:
One pre-filled dual-chamber syringe containing needs with Luprolon safety device • One plunger • Two alcohol swabs.
The first chamber of the syringe contains:
leuprolide acetate 11.25 mg • poly(lactic acid) 99.3 mg • D-mannitol 19.45 mg.
The second chamber contains:
D-mannitol 7.5 mg • carbonxyethylcellulose sodium 7.5 mg • polyacrylate 80 1.5 mg
• water for injection USP and glacial acetic acid USP to control pH.
Do not remove from chamber until ready to use.
Usual dose: After mixing immediately administer entire contents of syringe by intramuscular injection every three months under physician's supervision.
See package insert for full prescribing information.
If removed from this kit carton, Store at 25°C (77°F). Excursions permitted to 15-30°C (59-86°F).
Only activate safety Device Post-Injection
Not made with natural rubber latex.



• 1 Bottle - Norethindrone Acetate Tablets USP, 5 mg 90 Tablets, NDC 0074-1049-04
Usual dose: 5 mg (one tablet) orally once daily for 3 months. See package insert for full prescribing information.
If removed from this kit carton, Store at 20-25°C (68-77°F). Dispense in well closed containers.



For 3 MONTH ADMINISTRATION
FOR ADULT USE ONLY
Store at 25°C (77°F), excursions permitted to 15-30°C (59-86°F) (See USP Controlled Room Temperature).

Rx Only

abbvie

Lupaneta Pack™

leuprolide acetate for depot suspension,
11.25 mg for intramuscular injection only
and norethindrone acetate tablets, 5 mg for oral administration

3-MONTH
NDC 0074-1063-05

Lift tab and pull to open package

LUPANETA PACK

leuprolide acetate and norethindrone acetate kit

Product Information

Product Type	HUMAN PRESCRIPTION DRUG	Item Code (Source)	NDC:0074-1053
--------------	-------------------------	--------------------	---------------

Packaging

#	Item Code	Package Description	Marketing Start Date	Marketing End Date
1	NDC:0074-1053-05	1 in 1 CARTON	07/01/2013	

Quantity of Parts

Part #	Package Quantity	Total Product Quantity
Part 1	1 SYRINGE	1.5 mL
Part 2	1 BOTTLE	90
Part 3	2 PACKET	2 mL

Part 1 of 3

LUPRON DEPOT

leuprolide acetate injection, powder, lyophilized, for suspension

Product Information

Route of Administration	INTRAMUSCULAR
-------------------------	---------------

Active Ingredient/Active Moiety

Ingredient Name	Basis of Strength	Strength
LEUPROLIDE ACETATE (UNII: 37JNS02E7V) (LEUPROLIDE - UNII:EFY6W0M8TG)	LEUPROLIDE ACETATE	11.25 mg in 1.5 mL

Inactive Ingredients

Ingredient Name	Strength
POLYSORBATE 80 (UNII: 6OZP39ZG8H)	1.5 mg in 1.5 mL
ACETIC ACID (UNII: Q40Q9N063P)	
WATER (UNII: 059QF0KO0R)	
MANNITOL (UNII: 3OWL53L36A)	94.45 mg in 1.5 mL
CARBOXYMETHYLCELLULOSE SODIUM, UNSPECIFIED FORM (UNII: K679OBS311)	7.5 mg in 1.5 mL

Packaging

#	Item Code	Package Description	Marketing Start Date	Marketing End Date
1		1.5 mL in 1 SYRINGE; Type 2: Prefilled Drug Delivery Device/System (syringe, patch, etc.)		

Marketing Information

Marketing Category	Application Number or Monograph Citation	Marketing Start Date	Marketing End Date
NDA	NDA020708	03/07/1997	

Part 2 of 3

NORETHINDRONE ACETATE

norethindrone acetate tablet

Product Information

Item Code (Source)	NDC:0074-1049
Route of Administration	ORAL

Active Ingredient/Active Moiety

Ingredient Name	Basis of Strength	Strength
NORETHINDRONE ACETATE (UNII: 9S44LIC7OJ) (NORETHINDRONE - UNII:T18F433X4S)	NORETHINDRONE ACETATE	5 mg

Inactive Ingredients

Ingredient Name	Strength
MAGNESIUM STEARATE (UNII: 70097M6I30)	
TALC (UNII: 7SEV7J4R1U)	
SILICON DIOXIDE (UNII: ETJ7Z6XBU4)	
LACTOSE MONOHYDRATE (UNII: EWQ57Q8I5X)	
MICROCRYSTALLINE CELLULOSE (UNII: OP1R32D61U)	

Product Characteristics

Color	WHITE (to off-white)	Score	2 pieces
Shape	OVAL (flat faced beveled edged)	Size	11mm
Flavor		Imprint Code	G;304
Contains			

Packaging

#	Item Code	Package Description	Marketing Start Date	Marketing End Date
1		90 in 1 BOTTLE; Type 0: Not a Combination Product		

Marketing Information

Marketing Category	Application Number or Monograph Citation	Marketing Start Date	Marketing End Date
ANDA	ANDA091090	07/21/2010	

Part 3 of 3

ALCOHOL

isopropyl alcohol swab

Product Information

Route of Administration	TOPICAL
-------------------------	---------

Active Ingredient/Active Moiety

Ingredient Name	Basis of Strength	Strength
ISOPROPYL ALCOHOL (UNII: ND2M416302) (ISOPROPYL ALCOHOL - UNII:ND2M416302)	ISOPROPYL ALCOHOL	0.7 mL in 1 mL

Inactive Ingredients

Ingredient Name	Strength
WATER (UNII: 059QF0K00R)	

Packaging

#	Item Code	Package Description	Marketing Start Date	Marketing End Date
1		1 mL in 1 PACKET; Type 0: Not a Combination Product		

Marketing Information

Marketing Category	Application Number or Monograph Citation	Marketing Start Date	Marketing End Date
OTC monograph not final	part333A	07/01/2013	

Marketing Information

Marketing Category	Application Number or Monograph Citation	Marketing Start Date	Marketing End Date
NDA	NDA203696	07/01/2013	

Labeler - AbbVie Inc. (078458370)

