

**HEY HUMANS WHITENING CLEAN MINT RUSH- sodium fluoride paste,  
dentifrice  
Maesa LLC**

*Disclaimer: Most OTC drugs are not reviewed and approved by FDA, however they may be marketed if they comply with applicable regulations and policies. FDA has not evaluated whether this product complies.*

-----  
**Hey Humans Whitening Clean Mint Rush**

***Drug Facts***

**Active Ingredients**

Sodium Fluoride 0.25% (0.15% w/v fluoride ion)

**Purpose**

Anticavity

**Uses**

- Helps protect against cavities.

**Warnings**

- **Keep out of reach of children under 6 years of age.**
- If more than used for brushing is accidentally swallowed, get medical help or contact a Poison Control Center right away.

**Directions**

- Adults and children 2 years and older:
  - Brush teeth thoroughly, preferably after each meal or at least twice a day, or as directed by a dentist or physician.
- Children 2 to 6 years:
  - To minimize swallowing, use only a pea-sized amount.
  - Supervise children's brushing and rinsing until good habits are established.
- Children under 2 years of age: Consult a dentist or physician.

**Inactive Ingredients**

Glycerin, Sorbitol, Hydrated Silica, Water, Xylitol, Cocamidopropyl Betaine, Flavor, Sodium Cocoyl Glutamate, Xanthan Gum, Stevia Rebaudiana Leaf/Stem Extract, Cellulose Gum, Menthol, Squalene.

**Questions or Comments**

You may report an adverse reaction to: HEY HUMANS c/o Report Reaction LLC, PO Box 22, Plainsboro, NJ 08536-0222.

DISTRIBUTED BY: MAESA LLC  
225 LIBERTY STREET,  
NEW YORK, NY 10281.

**PRINCIPAL DISPLAY PANEL - 96 g Tube Carton**

Naturally Derived  
Toothpaste

With Fluoride

Hey  
Humans

With Everice™  
Technology

WHITENING

Long-lasting fresh breath,  
anticavity, anti-plaque,  
anti-tartar

Clean Mint  
Rush

Artificial sweetener,  
phthalate, paraben  
& sulfate free

NET WT. 96 g / 3.4 OZ.

## Naturally Derived Toothpaste

With Fluoride

swear  
Fey

### Drug Facts

#### Active Ingredients

Sodium Fluoride 0.25% (0.15% w/v fluoride ion).....

#### Purpose

Anticavity

#### Uses

• Helps protect against cavities.

#### Warnings

- Keep out of reach of children under 6 years of age.
- If more than used for brushing is accidentally swallowed, get medical help or contact a Poison Control Center right away.

#### Directions

- Adults and children 2 years and older:
  - Brush teeth thoroughly, preferably after each meal or at least twice a day, or

as dir

• Chill

◦ 7

◦ 5

• Chik

**Inac**

Glyce

Flavo

Extra

**Que:**

You r

clo R

With Everice™  
Technology

## WHITENING

Long-lasting fresh breath,  
anticavity, anti-plaque,  
anti-tartar

## Clean Mint Rush

Artificial sweetener,  
phthalate, paraben  
& sulfate free

NET WT. 96g / 3.4 OZ.



DISTRIBUTED BY: MAESA LLC  
225 LIBERTY STREET,  
NEW YORK, NY 10281

ected by a dentist or physician.

Children 2 to 6 years:

To minimize swallowing, use only a pea-sized amount.  
Supervise children's brushing and rinsing until good habits are established.  
Children under 2 years of age: Consult a dentist or physician.

### Active Ingredients

Hydroxyapatite, Sorbitol, Hydrated Silica, Water, Xylitol, Cocamidopropyl Betaine,  
Sodium Cocoyl Glutamate, Xanthan Gum, Stevia Rebaudiana Leaf/Stem  
Extract, Cellulose Gum, Menthol, Squalene.

### Warnings or Comments

Do not report an adverse reaction to: HEY HUMANS  
Sport Reaction LLC, PO Box 22, Plainsboro, NJ 08536-0222.

# Naturally Derived Toothpaste With Fluoride

Refreshing Mint Blend.  
Cooling Peppermint  
Fresh Herbs.

## RECYCLE ME!

**HEY HUMANS:** We have a plastic problem. Join us on our mission to bring change and reduce plastic on our planet.

Made with high quality and effective naturally derived ingredients, this fluoride toothpaste provides a deep cleanse while whitening your teeth. Contains **Everice™** for an icy cool sensation and long-lasting fresh breath.

Product aesthetic may vary due to naturally derived ingredients. Performance remains the same.

TUBE MADE FROM  
RECYCLABLE ALUMINUM &  
CAP MADE FROM  
100% PLASTIC WASTE.

**With Everice™ Technology**

**WHITENING**

Long-lasting fresh breath,  
anticalciv, anti-plaque, anti-tartar

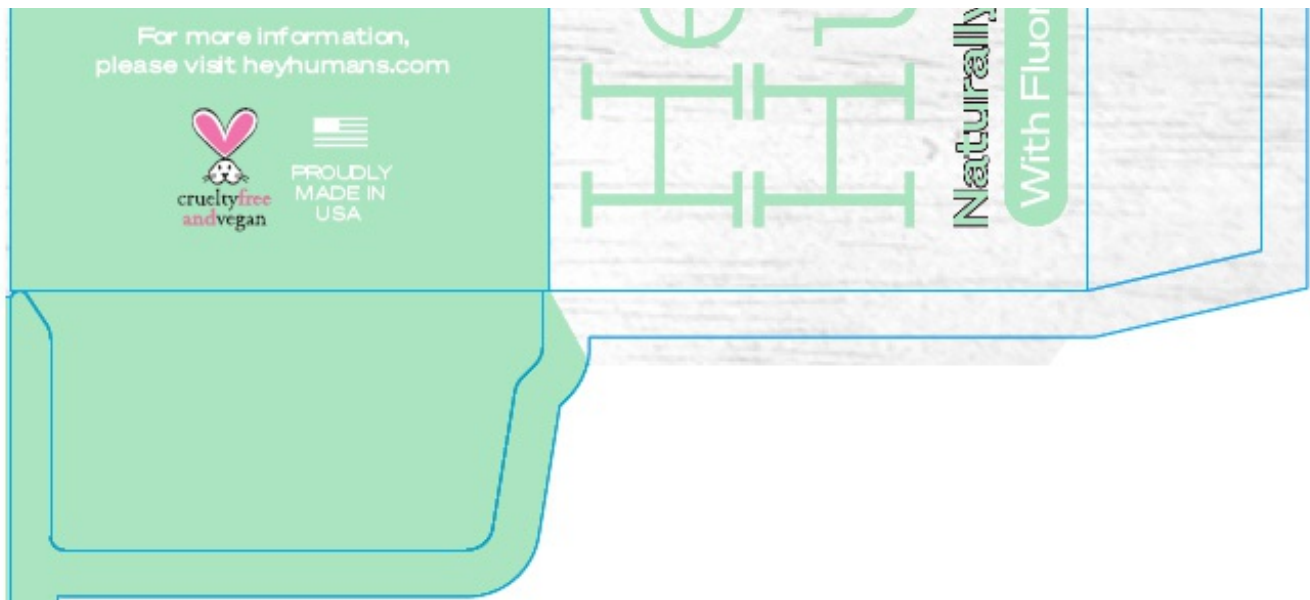
**Clean Mint Rush**

Artificial sweetener, phthalate,  
paraben & sulfate free

NET WT. 96 g / 3.4 OZ

ey  
Humans  
y Derived Toothpaste

ide



## HEY HUMANS WHITENING CLEAN MINT RUSH

sodium fluoride paste, dentifrice

### Product Information

<b>Product Type</b>	HUMAN OTC DRUG	<b>Item Code (Source)</b>	NDC:71899-200
<b>Route of Administration</b>	DENTAL		

### Active Ingredient/Active Moiety

Ingredient Name	Basis of Strength	Strength
<b>Sodium Fluoride</b> (UNII: 8ZYQ1474W7) (fluoride ion - UNII:Q80VPU4080)	fluoride ion	1.5 mg in 1 g

### Inactive Ingredients

Ingredient Name	Strength
<b>Glycerin</b> (UNII: PDC6A3C00X)	
<b>Sorbitol</b> (UNII: 506T60A25R)	
<b>Hydrated Silica</b> (UNII: Y6O7T4G8P9)	
<b>Water</b> (UNII: 059QF0KO0R)	
<b>Xylitol</b> (UNII: VCQ006KQ1E)	
<b>Cocamidopropyl Betaine</b> (UNII: 5OCF3011KX)	
<b>Sodium Cocoyl Glutamate</b> (UNII: BMT4RCZ3HG)	
<b>Xanthan Gum</b> (UNII: TTV12P4NEE)	
<b>Stevia Rebaudiuna Leaf</b> (UNII: 6TC6NN0876)	
<b>Carboxymethylcellulose Sodium, Unspecified</b> (UNII: K679OBS311)	
<b>Menthol, Unspecified Form</b> (UNII: L7T10EIP3A)	
<b>Squalene</b> (UNII: 7QWM220FJH)	

### Packaging

Marketing Start      Marketing End

#	Item Code	Package Description	Marketing Start Date	Marketing End Date
1	NDC:71899-200-01	1 in 1 CARTON	01/31/2021	
1		96 g in 1 TUBE; Type 0: Not a Combination Product		

### Marketing Information

Marketing Category	Application Number or Monograph Citation	Marketing Start Date	Marketing End Date
OTC MONOGRAPH FINAL	part355	01/31/2021	

**Labeler** - Maesa LLC (144282311)

### Establishment

Name	Address	ID/FEI	Business Operations
Nutrix International LLC		117341868	MANUFACTURE(71899-200)

Revised: 3/2021

Maesa LLC