

CARISOPRODOL - carisoprodol tablet

Aurobindo Pharma Limited

HIGHLIGHTS OF PRESCRIBING INFORMATION

These highlights do not include all the information needed to use CARISOPRODOL TABLETS safely and effectively. See full prescribing information for CARISOPRODOL TABLETS.

CARISOPRODOL tablets, for oral use CIV
Initial U.S. Approval: 1959

INDICATIONS AND USAGE

Carisoprodol is a muscle relaxant indicated for the relief of discomfort associated with acute, painful musculoskeletal conditions in adults. (1)

Limitation of Use

Should only be used for acute treatment periods up to two or three weeks (1)

DOSAGE AND ADMINISTRATION

- Recommended dose is 250 mg to 350 mg three times a day and at bedtime. (2)

DOSAGE FORMS AND STRENGTHS

Tablets: 250 mg, 350 mg (3)

CONTRAINDICATIONS

- Acute intermittent porphyria (4)
- Hypersensitivity reactions to a carbamate such as meprobamate (4)

WARNINGS AND PRECAUTIONS

- Due to sedative properties, may impair ability to perform hazardous tasks such as driving or operating machinery (5.1)
- Additive sedative effects when used with other CNS depressants including alcohol (5.1)
- Cases of abuse, dependence and withdrawal (5.2, 9.2, 9.3)
- Seizures (5.3)

ADVERSE REACTIONS

Most common adverse reactions (incidence > 2%) are drowsiness, dizziness, and headache (6.1)

To report SUSPECTED ADVERSE REACTIONS, contact Aurobindo Pharma USA, Inc. at 1-866-850-2876 or FDA at 1-800-FDA-1088 or www.fda.gov/medwatch.

DRUG INTERACTIONS

CNS depressants (e.g., alcohol, benzodiazepines, opioids, tricyclic antidepressants) - additive sedative effects (5.1, 7.1)

See 17 for PATIENT COUNSELING INFORMATION.

Revised: 11/2021

FULL PRESCRIBING INFORMATION: CONTENTS*

- 1 INDICATIONS AND USAGE
- 2 DOSAGE AND ADMINISTRATION
- 3 DOSAGE FORMS AND STRENGTHS
- 4 CONTRAINDICATIONS
- 5 WARNINGS AND PRECAUTIONS
 - 5.1 Sedation

5.2 Abuse, Dependence and Withdrawal

5.3 Seizures

6 ADVERSE REACTIONS

6.1 Clinical Studies Experience

6.2 Post-marketing Experience

7 DRUG INTERACTIONS

7.1 CNS Depressants

7.2 CYP2C19 Inhibitors and Inducers

8 USE IN SPECIFIC POPULATIONS

8.1 Pregnancy

8.2 Lactation

8.4 Pediatric Use

8.5 Geriatric Use

8.6 Renal Impairment

8.7 Hepatic Impairment

8.8 Patients with Reduced CYP2C19 Activity

9 DRUG ABUSE AND DEPENDENCE

9.1 Controlled Substance

9.2 Abuse

9.3 Dependence

10 OVERDOSAGE

11 DESCRIPTION

12 CLINICAL PHARMACOLOGY

12.1 Mechanism of Action

12.2 Pharmacodynamics

12.3 Pharmacokinetics

13 NONCLINICAL TOXICOLOGY

13.1 Carcinogenesis, Mutagenesis, Impairment of Fertility

14 CLINICAL STUDIES

16 HOW SUPPLIED/STORAGE AND HANDLING

17 PATIENT COUNSELING INFORMATION

* Sections or subsections omitted from the full prescribing information are not listed.

FULL PRESCRIBING INFORMATION

1 INDICATIONS AND USAGE

Carisoprodol tablets are indicated for the relief of discomfort associated with acute, painful musculoskeletal conditions in adults.

Limitation of Use

Carisoprodol tablets should only be used for short periods (up to two or three weeks) because adequate evidence of effectiveness for more prolonged use has not been established and because acute, painful musculoskeletal conditions are generally of short

duration [see *Dosage and Administration (2)*].

2 DOSAGE AND ADMINISTRATION

The recommended dose of carisoprodol tablets is 250 mg to 350 mg three times a day and at bedtime. The recommended maximum duration of carisoprodol tablets use is up to two or three weeks.

3 DOSAGE FORMS AND STRENGTHS

Carisoprodol tablets USP, 250 mg are white colored, round shaped, biconvex, uncoated tablets, identified with 'H 94' debossed on one side and other side plain.

Carisoprodol tablets USP, 350 mg are white colored, round shaped, biconvex, uncoated tablets, identified with 'D' debossed on one side and '31' on the other side.

4 CONTRAINDICATIONS

Carisoprodol tablets are contraindicated in patients with a history of acute intermittent porphyria or a hypersensitivity reaction to a carbamate such as meprobamate.

5 WARNINGS AND PRECAUTIONS

5.1 Sedation

Carisoprodol has sedative properties (in the low back pain trials, 13% to 17% of patients who received carisoprodol experienced sedation compared to 6% of patients who received placebo) [see *ADVERSE REACTIONS (6.1)*] and may impair the mental and/or physical abilities required for the performance of potentially hazardous tasks such as driving a motor vehicle or operating machinery. There have been post-marketing reports of motor vehicle accidents associated with the use of carisoprodol.

Since the sedative effects of carisoprodol and other CNS depressants (e.g., alcohol, benzodiazepines, opioids, tricyclic antidepressants) may be additive, appropriate caution should be exercised with patients who take more than one of these CNS depressants simultaneously.

5.2 Abuse, Dependence and Withdrawal

Carisoprodol, the active ingredient in carisoprodol, has been subject to abuse, dependence, and withdrawal, misuse and criminal diversion [see *Drug Abuse and Dependence (9.1, 9.2, 9.3)*]. Abuse of carisoprodol poses a risk of overdose which may lead to death, CNS and respiratory depression, hypotension, seizures and other disorders [see *Overdosage (10)*].

Post-marketing experience cases of carisoprodol abuse and dependence have been

reported in patients with prolonged use and a history of drug abuse. Although most of these patients took other drugs of abuse, some patients solely abused carisoprodol. Withdrawal symptoms have been reported following abrupt cessation of carisoprodol after prolonged use. Reported withdrawal symptoms included insomnia, vomiting, abdominal cramps, headache, tremors, muscle twitching, ataxia, hallucinations, and psychosis. One of carisoprodol's metabolites, meprobamate (a controlled substance), may also cause dependence [see *Clinical Pharmacology (12.3)*].

To reduce the risk of carisoprodol abuse assess the risk of abuse prior to prescribing. After prescribing, limit the length of treatment to three weeks for the relief of acute musculoskeletal discomfort, keep careful prescription records, monitor for signs of abuse and overdose, and educate patients and their families about abuse and on proper storage and disposal.

5.3 Seizures

There have been post-marketing reports of seizures in patients who received carisoprodol. Most of these cases have occurred in the setting of multiple drug overdoses (including drugs of abuse, illegal drugs, and alcohol) [see *Overdosage (10)*].

6 ADVERSE REACTIONS

6.1 Clinical Studies Experience

Because clinical studies are conducted under widely varying conditions, adverse reaction rates observed in clinical studies of a drug cannot be directly compared to rates in the clinical studies of another drug and may not reflect rates observed in practice.

The data described below are based on 1387 patients pooled from two double blind, randomized, multicenter, placebo controlled, one-week trials in adult patients with acute, mechanical, lower back pain [see *Clinical Studies (14)*]. In these studies, patients were treated with 250 mg of carisoprodol, 350 mg of carisoprodol, or placebo three times a day and at bedtime for seven days. The mean age was about 41 years old with 54% females and 46% males and 74% Caucasian, 16% Black, 9% Asian, and 2% other.

There were no deaths and there were no serious adverse reactions in these two trials. In these two studies, 2.7%, 2%, and 5.4%, of patients treated with placebo, 250 mg of carisoprodol, and 350 mg of carisoprodol, respectively, discontinued due to adverse events; and 0.5%, 0.5%, and 1.8% of patients treated with placebo, 250 mg of carisoprodol, and 350 mg of carisoprodol, respectively, discontinued due to central nervous system adverse reactions.

Table 1 displays adverse reactions reported with frequencies greater than 2% and more frequently than placebo in patients treated with carisoprodol in the two trials described above.

Patients with Adverse Reactions in Controlled Studies	Table 1.
--	-----------------

Adverse Reaction	Placebo (n=560) n (%)	Carisoprodol 250 mg (n=548) n (%)	Carisoprodol 350 mg (n=279) n (%)
Drowsiness	31 (6)	73 (13)	47 (17)
Dizziness	11 (2)	43 (8)	19 (7)
Headache	11 (2)	26 (5)	9 (3)

6.2 Post-marketing Experience

The following events have been reported during postapproval use of carisoprodol. Because these reactions are reported voluntarily from a population of uncertain size, it is not always possible to reliably estimate their frequency or establish a causal relationship to drug exposure.

Cardiovascular: Tachycardia, postural hypotension, and facial flushing [see *Overdosage (10)*].

Central Nervous System: Drowsiness, dizziness, vertigo, ataxia, tremor, agitation, irritability, headache, depressive reactions, syncope, insomnia, and seizures [see *Overdosage (10)*].

Gastrointestinal: Nausea, vomiting, and epigastric discomfort.

Hematologic: Leukopenia, pancytopenia.

7 DRUG INTERACTIONS

7.1 CNS Depressants

The sedative effects of carisoprodol and other CNS depressants (e.g., alcohol, benzodiazepines, opioids, tricyclic antidepressants) may be additive. Therefore, caution should be exercised with patients who take more than one of these CNS depressants simultaneously. Concomitant use of carisoprodol and meprobamate, a metabolite of carisoprodol, is not recommended [see *Warnings and Precautions (5.1)*].

7.2 CYP2C19 Inhibitors and Inducers

Carisoprodol is metabolized in the liver by CYP2C19 to form meprobamate [see *Clinical Pharmacology (12.3)*]. Co-administration of CYP2C19 inhibitors, such as omeprazole or fluvoxamine, with carisoprodol could result in increased exposure of carisoprodol and decreased exposure of meprobamate. Co-administration of CYP2C19 inducers, such as rifampin or St. John's Wort, with carisoprodol could result in decreased exposure of carisoprodol and increased exposure of meprobamate. Low dose aspirin also showed an induction effect on CYP2C19. The full pharmacological impact of these potential alterations of exposures in terms of either efficacy or safety of carisoprodol is unknown.

8 USE IN SPECIFIC POPULATIONS

8.1 Pregnancy

Risk Summary

Data over many decades of carisoprodol use in pregnancy have not identified a drug-associated risk of major birth defects, miscarriage, or other adverse maternal or fetal outcomes. Data on meprobamate, the primary metabolite of carisoprodol, also do not show a consistent association between maternal use of meprobamate and an increased risk of major birth defects (*see Data*).

In a published animal reproduction study, pregnant mice administered carisoprodol orally at 2.6- and 4.1-times the maximum recommended human dose ([MRHD] of 1400 mg per day [350 mg QID] based on body surface area [BSA] comparison) from gestation through weaning resulted in reduced fetal weights, postnatal weight gain, and postnatal survival (*see Data*).

The estimated background risk of major birth defects and miscarriage for the indicated population is unknown. All pregnancies have a background risk of birth defect, loss, or other adverse outcomes. In the U.S. general population, the estimated background risk of major birth defects and miscarriage in clinically recognized pregnancies is 2 to 4% and 15 to 20%, respectively.

Data

Human Data

Retrospective case-control and cohort studies of meprobamate use during the first trimester of pregnancy have not consistently identified an increased risk or pattern of major birth defects. For children exposed to meprobamate *in-utero*, one study found no adverse effect on mental or motor development or IQ scores.

Animal Data

Embryofetal development studies in animals have not been completed.

In a published pre- and post-natal development animal study, pregnant mice administered carisoprodol orally at 300, 750, or 1200 mg/kg/day (approximately 1-, 2.6-, and 4.1-times the MRHD based on BSA comparison) from 7-days prior to gestation through birth and from lactation through weaning resulted in reduced fetal weights, postnatal weight gain, and postnatal survival at 2.6- and 4.1-times the MRHD.

8.2 Lactation

Risk Summary

Data from published literature report that carisoprodol and its metabolite, meprobamate, are present in breastmilk. There are no data on the effect of carisoprodol on milk production. There is one report of sedation in an infant who was breastfed by a mother taking carisoprodol (*see Clinical Considerations*). Because there have been no consistent reports of adverse events in breastfed infants over decades of use, the developmental and health benefits of breastfeeding should be considered along with the mother's

clinical need for carisoprodol and any potential adverse effects on the breastfed infant from carisoprodol or from the underlying maternal condition.

Clinical Considerations

Infants exposed to carisoprodol through breast milk should be monitored for sedation.

8.4 Pediatric Use

The efficacy, safety, and pharmacokinetics of carisoprodol in pediatric patients less than 16 years of age have not been established.

8.5 Geriatric Use

The efficacy, safety, and pharmacokinetics of carisoprodol in patients over 65 years old have not been established.

8.6 Renal Impairment

The safety and pharmacokinetics of carisoprodol in patients with renal impairment have not been evaluated. Since carisoprodol is excreted by the kidney, caution should be exercised if carisoprodol is administered to patients with impaired renal function. Carisoprodol is dialyzable by hemodialysis and peritoneal dialysis.

8.7 Hepatic Impairment

The safety and pharmacokinetics of carisoprodol in patients with hepatic impairment have not been evaluated. Since carisoprodol is metabolized in the liver, caution should be exercised if carisoprodol is administered to patients with impaired hepatic function.

8.8 Patients with Reduced CYP2C19 Activity

Patients with reduced CYP2C19 activity have higher exposure to carisoprodol. Therefore, caution should be exercised in administration of carisoprodol to these patients [see *Clinical Pharmacology (12.3)*].

9 DRUG ABUSE AND DEPENDENCE

9.1 Controlled Substance

Carisoprodol, a Schedule IV controlled substance. Carisoprodol has been subject to abuse, misuse, and criminal diversion for nontherapeutic use [see *Warnings and Precautions (5.2)*].

9.2 Abuse

Abuse of carisoprodol poses a risk of overdose which may lead to death, CNS and

respiratory depression, hypotension, seizures and other disorders [see *Warnings and Precautions (5.2) and Overdosage (10)*]. Patients at high risk of carisoprodol abuse may include those with prolonged use of carisoprodol, with a history of drug abuse, or those who use carisoprodol in combination with other abused drugs.

Prescription drug abuse is the intentional non-therapeutic use of a drug, even once, for its rewarding psychological effects. Drug addiction, which develops after repeated drug abuse, is characterized by a strong desire to take a drug despite harmful consequences, difficulty in controlling its use, giving a higher priority to drug use than to obligations, increased tolerance, and sometimes physical withdrawal. Drug abuse and drug addiction are separate and distinct from physical dependence and tolerance (for example, abuse or addiction may not be accompanied by tolerance or physical dependence) [see *Drug Abuse and Dependence (9.3)*].

9.3 Dependence

Tolerance is when a patient's reaction to a specific dosage and concentration is progressively reduced in the absence of disease progression, requiring an increase in the dosage to maintain the same. Physical dependence is characterized by withdrawal symptoms after abrupt discontinuation or a significant dose reduction of a drug. Both tolerance and physical dependence have been reported with the prolonged use of carisoprodol. Reported withdrawal symptoms with carisoprodol include insomnia, vomiting, abdominal cramps, headache, tremors, muscle twitching, anxiety, ataxia, hallucinations, and psychosis. Instruct patients taking large doses of carisoprodol or those taking the drug for a prolonged time to not abruptly stop carisoprodol [see *Warnings and Precautions (5.2)*].

10 OVERDOSAGE

Clinical Presentation

Overdosage of carisoprodol commonly produces CNS depression. Death, coma, respiratory depression, hypotension, seizures, delirium, hallucinations, dystonic reactions, nystagmus, blurred vision, mydriasis, euphoria, muscular incoordination, rigidity, and/or headache have been reported with carisoprodol overdosage. Serotonin syndrome has been reported with carisoprodol intoxication. Many of the carisoprodol overdoses have occurred in the setting of multiple drug overdoses (including drugs of abuse, illegal drugs, and alcohol). The effects of an overdose of carisoprodol and other CNS depressants (e.g., alcohol, benzodiazepines, opioids, tricyclic antidepressants) can be additive even when one of the drugs has been taken in the recommended dosage. Fatal accidental and non-accidental overdoses of carisoprodol have been reported alone or in combination with CNS depressants.

Treatment of Overdosage

Basic life support measures should be instituted as dictated by the clinical presentation of the carisoprodol overdose. Vomiting should not be induced because of the risk of CNS and respiratory depression, and subsequent aspiration. Circulatory support should

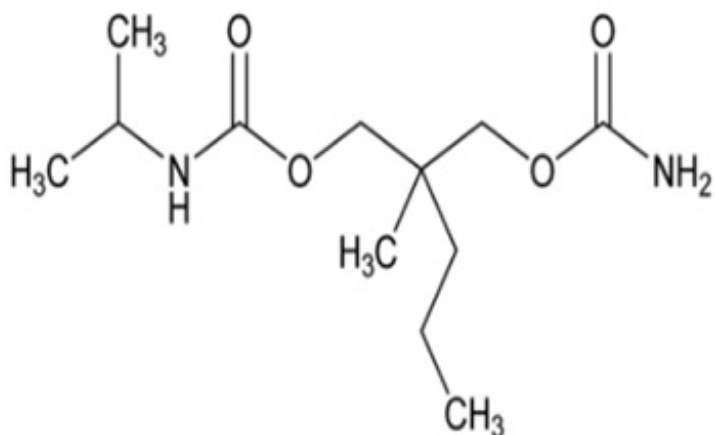
be administered with volume infusion and vasopressor agents if needed. Seizures should be treated with intravenous benzodiazepines and the reoccurrence of seizures may be treated with phenobarbital. In cases of severe CNS depression, airway protective reflexes may be compromised and tracheal intubation should be considered for airway protection and respiratory support.

For decontamination in cases of severe toxicity, activated charcoal should be considered in a hospital setting in patients with large overdoses who present early and are not demonstrating CNS depression and can protect their airway.

For more information on the management of an overdose of carisoprodol, **contact a Poison Control Center.**

11 DESCRIPTION

Carisoprodol tablets, USP are available as 250 mg and 350 mg round, white tablets. Carisoprodol USP is a white, crystalline powder, having a mild, characteristic odor and a bitter taste. It is slightly soluble in water; freely soluble in alcohol, in chloroform, and in acetone; and its solubility is practically independent of pH. Carisoprodol is present as a racemic mixture. Chemically, carisoprodol is (\pm)-2-Methyl-2-propyl-1,3-propanediol carbamate isopropylcarbamate and the molecular formula is $C_{12}H_{24}N_2O_4$, with a molecular weight of 260.33. The structural formula is:



Other ingredients in the carisoprodol tablets, USP include pregelatinized starch (maize), crospovidone, povidone, microcrystalline cellulose, colloidal silicon dioxide, and magnesium stearate.

12 CLINICAL PHARMACOLOGY

12.1 Mechanism of Action

The mechanism of action of carisoprodol in relieving discomfort associated with acute painful musculoskeletal conditions has not been clearly identified.

In animal studies, muscle relaxation induced by carisoprodol is associated with altered interneuronal activity in the spinal cord and in the descending reticular formation of the brain.

12.2 Pharmacodynamics

Carisoprodol is a centrally acting skeletal muscle relaxant that does not directly relax skeletal muscles.

A metabolite of carisoprodol, meprobamate, has anxiolytic and sedative properties. The degree to which these properties of meprobamate contribute to the safety and efficacy of carisoprodol is unknown.

12.3 Pharmacokinetics

Absorption

The pharmacokinetics of carisoprodol and its metabolite meprobamate were studied in a crossover study of 24 healthy subjects (12 male and 12 female) who received single doses of 250 mg and 350 mg carisoprodol (see Table 2). The exposure of carisoprodol and meprobamate was dose proportional between the 250 mg and 350 mg doses. The C_{max} of meprobamate was 2.5 ± 0.5 mcg/mL (mean \pm SD) after administration of a single 350 mg dose of carisoprodol, which is approximately 30% of the C_{max} of meprobamate (approximately 8 mcg/mL) after administration of a single 400 mg dose of meprobamate.

Table 2. Pharmacokinetic Parameters of Carisoprodol and Meprobamate (Mean \pm SD, n=24)		
	250 mg Carisoprodol	350 mg Carisoprodol
Carisoprodol		
C_{max} (mcg/mL)	1.2 \pm 0.5	1.8 \pm 1
AUC_{inf} (mcg*hr/mL)	4.5 \pm 3.1	7 \pm 5
T_{max} (hr)	1.5 \pm 0.8	1.7 \pm 0.8
$T_{1/2}$ (hr)	1.7 \pm 0.5	2 \pm 0.5
Meprobamate		
C_{max} (mcg/mL)	1.8 \pm 0.3	2.5 \pm 0.5
AUC_{inf} (mcg*hr/mL)	32 \pm 6.2	46 \pm 9
T_{max} (hr)	3.6 \pm 1.7	4.5 \pm 1.9
$T_{1/2}$ (hr)	9.7 \pm 1.7	9.6 \pm 1.5

Absolute bioavailability of carisoprodol has not been determined. The mean time to peak plasma concentrations (T_{max}) of carisoprodol was approximately 1.5 to 2 hours.

Food Effect: Co-administration of a high-fat meal with carisoprodol (350 mg tablet) had

no effect on the pharmacokinetics of carisoprodol. Therefore, carisoprodol may be administered with or without food.

Elimination

Metabolism: The major pathway of carisoprodol metabolism is via the liver by cytochrome enzyme CYP2C19 to form meprobamate. This enzyme exhibits genetic polymorphism (see Patients with Reduced CYP2C19 Activity below).

Excretion: Carisoprodol is eliminated by both renal and non-renal routes with a terminal elimination half-life of approximately 2 hours. The half-life of meprobamate is approximately 10 hours.

Specific Populations

Sex: Exposure of carisoprodol is higher in female than in male subjects (approximately 30 to 50% on a weight adjusted basis). Overall exposure of meprobamate is comparable between female and male subjects.

Patients with Reduced CYP2C19 Activity: Carisoprodol should be used with caution in patients with reduced CYP2C19 activity. Published studies indicate that patients who are poor CYP2C19 metabolizers have a 4-fold increase in exposure to carisoprodol, and concomitant 50% reduced exposure to meprobamate compared to normal CYP2C19 metabolizers. The prevalence of poor metabolizers in Caucasians and African Americans is approximately 3 to 5% and in Asians is approximately 15 to 20%.

13 NONCLINICAL TOXICOLOGY

13.1 Carcinogenesis, Mutagenesis, Impairment of Fertility

Carcinogenesis

Long term studies in animals have not been performed to evaluate the carcinogenic potential of carisoprodol.

Mutagenesis

Carisoprodol was not formally evaluated for genotoxicity. In published studies, carisoprodol was mutagenic in the *in vitro* mouse lymphoma cell assay in the absence of metabolizing enzymes, but was not mutagenic in the presence of metabolizing enzymes. Carisoprodol was clastogenic in the *in vitro* chromosomal aberration assay using Chinese hamster ovary cells with or without the presence of metabolizing enzymes. Other types of genotoxic tests resulted in negative findings. Carisoprodol was not mutagenic in the Ames reverse mutation assay using *S. typhimurium* strains with or without metabolizing enzymes, and was not clastogenic in an *in vivo* mouse micronucleus assay of circulating blood cells.

Impairment of Fertility

Carisoprodol was not formally evaluated for effects on fertility. A published reproductive study in which female mice received carisoprodol orally at doses of 300, 750, or 1200 mg/kg/day (approximately 1, 2.6, and 4.1 times the MRHD of 1400 mg per day [350 mg QID] based on body surface area [BSA] comparison) from 1-week prior to mating, to 27-weeks post-mating found no alteration in fertility although an alteration in reproductive cycles characterized by a greater time spent in estrus was observed at a carisoprodol dose of 1200 mg/kg/day. In a 13-week toxicology study that did not determine fertility, mouse testes weight and sperm motility were reduced at a dose of 1200 mg/kg/day (maternal doses equivalent to 4.2-times the MRHD based on BSA comparison). In both studies, the no effect level was 750 mg/kg/day, corresponding to approximately 2.6-times the MRHD based on a BSA comparison. The significance of these findings for human fertility is not known.

14 CLINICAL STUDIES

The safety and efficacy of carisoprodol for the relief of acute, idiopathic mechanical low back pain was evaluated in two, 7-day, double blind, randomized, multicenter, placebo controlled, U.S. trials (Studies 1 and 2). Patients had to be 18 to 65 years old and had to have acute back pain (≤ 3 days of duration) to be included in the trials. Patients with chronic back pain; at increased risk for vertebral fracture (e.g., history of osteoporosis); with a history of spinal pathology (e.g., herniated nucleus pulposus, spondylolisthesis or spinal stenosis); with inflammatory back pain, or with evidence of a neurologic deficit were excluded from participation. Concomitant use of analgesics (e.g., acetaminophen, NSAIDs, tramadol, opioid agonists), other muscle relaxants, botulinum toxin, sedatives (e.g., barbiturates, benzodiazepines, promethazine hydrochloride), and anti-epileptic drugs was prohibited.

In Study 1, patients were randomized to one of three treatment groups (i.e., carisoprodol 250 mg, carisoprodol 350 mg, or placebo) and in Study 2 patients were randomized to two treatment groups (i.e., carisoprodol 250 mg or placebo). In both studies, patients received study medication three times a day and at bedtime for seven days.

The primary endpoints were the relief from starting backache and the global impression of change, as reported by patients, on Study Day 3. Both endpoints were scored on a 5-point rating scale from 0 (worst outcome) to 4 (best outcome) in both studies. The primary statistical comparison was between the carisoprodol 250 mg and placebo groups in both studies.

The proportion of patients who used concomitant acetaminophen, NSAIDs, tramadol, opioid agonists, other muscle relaxants, and benzodiazepines was similar in the treatment groups.

The results for the primary efficacy evaluations in the acute, low back pain studies are presented in Table 3.

Table 3. Results of the Primary Efficacy Endpoints^a in Studies 1 and 2	
	Carisoprodol
	Carisoprodol

Study	Parameter	Placebo	Carisoprodol 250 mg	Carisoprodol 350 mg
1	Number of Patients	n=269	n=264	n=273
	Relief from Starting Backache, Mean (SE)^b	1.4 (0.1)	1.8 (0.1)	1.8 (0.1)
	Difference between Carisoprodol and Placebo, Mean (SE) ^b (95% CI)		0.4 (0.2, 0.5)	0.4 (0.2, 0.6)
	Global Impression of Change, Mean (SE)^b	1.9 (0.1)	2.2 (0.1)	2.2 (0.1)
	Difference between Carisoprodol and Placebo, Mean (SE) ^b (95% CI)		0.2 (0.1, 0.4)	0.3 (0.1, 0.4)
2	Number of Patients	n=278	n=269	
	Relief from Starting Backache, Mean (SE)^b	1.1 (0.1)	1.8 (0.1)	
	Difference between Carisoprodol and Placebo, Mean (SE) ^b (95% CI)		0.7 (0.5, 0.9)	
	Global Impression of Change, Mean (SE)^b	1.7 (0.1)	2.2 (0.1)	
	Difference between Carisoprodol and Placebo, Mean (SE) ^b (95% CI)		0.5 (0.4, 0.7)	

^a The primary efficacy endpoints (Relief from Starting Backache and Global Impression of Change) were assessed by the patients on Study Day 3. These endpoints were scored on a 5-point rating scale from 0 (worst outcome) to 4 (best outcome).

^b Mean is the least squared mean and SE is the standard error of the mean. The ANOVA model was used for the primary statistical comparison between the carisoprodol 250 mg and placebo groups.

Patients treated with carisoprodol experienced improvement in function as measured by the Roland-Morris Disability Questionnaire (RMDQ) score on Days 3 and 7.

16 HOW SUPPLIED/STORAGE AND HANDLING

Carisoprodol Tablets USP, 250 mg are white colored, round shaped, biconvex, uncoated tablets, identified with 'H 94' debossed on one side and other side plain.

Bottles of 30	NDC 65862-693-30
Bottles of 60	NDC 65862-693-60
Bottles of 90	NDC 65862-693-90
Bottles of 100	NDC 65862-693-01
Bottles of 1,000	NDC 65862-693-99

Carisoprodol Tablets USP, 350 mg are white colored, round shaped, biconvex, uncoated tablets, identified with 'D' debossed on one side and '31' on the other side.

Bottles of 100	NDC 65862-158-01
Bottles of 500	NDC 65862-158-05
Bottles of 1,000	NDC 65862-158-99

Storage

Store at 20° to 25°C (68° to 77°F) [see USP Controlled Room Temperature].

Dispense in tight container.

17 PATIENT COUNSELING INFORMATION

Patients should be advised to contact their physician if they experience any adverse reactions to carisoprodol.

Sedation

Advise patients that carisoprodol may cause drowsiness and/or dizziness, and has been associated with motor vehicle accidents. Patients should be advised to avoid taking carisoprodol before engaging in potentially hazardous activities such as driving a motor vehicle or operating machinery [see *Warnings and Precautions (5.1)*].

Avoidance of Alcohol and Other CNS Depressants

Advise patients to avoid alcoholic beverages while taking carisoprodol and to check with their doctor before taking other CNS depressants such as benzodiazepines, opioids, tricyclic antidepressants, sedating antihistamines, or other sedatives [see *Warnings and Precautions (5.1)*].

Carisoprodol Should Only Be Used for Short-Term Treatment

Advise patients that treatment with carisoprodol should be limited to acute use (up to two or three weeks) for the relief of acute, musculoskeletal discomfort. In the post-marketing experience with carisoprodol, cases of dependence, withdrawal, and abuse have been reported with prolonged use. If the musculoskeletal symptoms still persist, patients should contact their healthcare provider for further evaluation.

Lactation

Advise nursing mothers using carisoprodol to monitor neonates for signs of sedation [see *Use in Specific Populations (8.2)*].

Distributed by:

Aurobindo Pharma USA, Inc.
279 Princeton-Hightstown Road
East Windsor, NJ 08520

Manufactured by:

Aurobindo Pharma Limited
Hyderabad-500 032, India

Revised: 11/2021

PACKAGE LABEL-PRINCIPAL DISPLAY PANEL - 250 mg (100 Tablet Bottle)

NDC 65862-693-01

Rx only

Carisoprodol

Tablets, USP CIV

250 mg

AUROBINDO 100 Tablets

NDC 65862-693-01

Each tablet contains:
Carisoprodol USP 250 mg.

Distributed by:
Aurobindo Pharma USA, Inc.
279 Princeton-Hightstown Road
East Windsor, NJ 08520

Rx only

Carisoprodol **CIV**

Tablets, USP

250 mg

AUROBINDO 100 Tablets

Usual Dosage: Please see enclosed full prescribing information.

Made in India

Code: TS/DRUGS/19/1993

Dispense in tight container.

Store at 20° to 25°C (68° to 77°F)
[see USP Controlled Room Temperature].

P 1422135

*Over Printing Zone

Coding Area
(45 x 15 mm)
Dotted lines not to be printed

N 3 6 5 8 6 2 6 9 3 0 1 3

PACKAGE LABEL-PRINCIPAL DISPLAY PANEL - 350 mg (100 Tablet Bottle)

NDC 65862-158-01

Rx only

Carisoprodol

Tablets, USP CIV

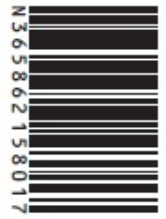
350 mg

AUROBINDO 100 Tablets

NDC 65862-158-01

Each tablet contains:
Carisoprodol USP 350 mg.

Distributed by:
Aurobindo Pharma USA, Inc.
279 Princeton-Hightstown Road
East Windsor, NJ 08520



Rx only

**Carisoprodol
Tablets, USP** 

350 mg

 AUROBINDO

100 Tablets

Usual Dosage: Please see enclosed full prescribing information.

Made in India

Code: TS/DRUGS/19/1993

Dispense in tight container.

Store at 20° to 25°C (68° to 77°F)
[see USP Controlled Room Temperature].

P1422137



*Over Printing Zone

Coding Area

(45 x 15 mm)

Dotted lines not to be printed

CARISOPRODOL

carisoprodol tablet

Product Information

Product Type	HUMAN PRESCRIPTION DRUG	Item Code (Source)	NDC:65862-693
Route of Administration	ORAL	DEA Schedule	CIV

Active Ingredient/Active Moiety

Ingredient Name	Basis of Strength	Strength
CARISOPRODOL (UNII: 21925K482H) (CARISOPRODOL - UNII:21925K482H)	CARISOPRODOL	250 mg

Inactive Ingredients

Ingredient Name	Strength
STARCH, CORN (UNII: O8232NY3SJ)	
CROSPVIDONE (UNII: 68401960MK)	
POVIDONE K30 (UNII: U725QWY32X)	
MICROCRYSTALLINE CELLULOSE (UNII: OP1R32D61U)	
SILICON DIOXIDE (UNII: ETJ7Z6XBU4)	
MAGNESIUM STEARATE (UNII: 70097M6I30)	

Product Characteristics

Color	WHITE	Score	no score
Shape	ROUND (Biconvex)	Size	10mm
Flavor		Imprint Code	H;94

Contains**Packaging**

#	Item Code	Package Description	Marketing Start Date	Marketing End Date
1	NDC:65862-693-30	30 in 1 BOTTLE; Type 0: Not a Combination Product	11/08/2016	
2	NDC:65862-693-60	60 in 1 BOTTLE; Type 0: Not a Combination Product	11/08/2016	
3	NDC:65862-693-90	90 in 1 BOTTLE; Type 0: Not a Combination Product	11/08/2016	
4	NDC:65862-693-01	100 in 1 BOTTLE; Type 0: Not a Combination Product	11/08/2016	
5	NDC:65862-693-99	1000 in 1 BOTTLE; Type 0: Not a Combination Product	11/08/2016	

Marketing Information

Marketing Category	Application Number or Monograph Citation	Marketing Start Date	Marketing End Date
ANDA	ANDA040792	11/08/2016	

CARISOPRODOL

carisoprodol tablet

Product Information

Product Type	HUMAN PRESCRIPTION DRUG	Item Code (Source)	NDC:65862-158
Route of Administration	ORAL	DEA Schedule	CIV

Active Ingredient/Active Moiety

Ingredient Name	Basis of Strength	Strength
CARISOPRODOL (UNII: 21925K482H) (CARISOPRODOL - UNII:21925K482H)	CARISOPRODOL	350 mg

Inactive Ingredients

Ingredient Name	Strength
STARCH, CORN (UNII: O8232NY3SJ)	
CROSPVIDONE (UNII: 68401960MK)	
POVIDONE K30 (UNII: U725QWY32X)	
MICROCRYSTALLINE CELLULOSE (UNII: OP1R32D61U)	
SILICON DIOXIDE (UNII: ETJ7Z6XBU4)	
MAGNESIUM STEARATE (UNII: 70097M6I30)	

Product Characteristics

Color	WHITE	Score	no score
--------------	-------	--------------	----------

Shape	ROUND (Biconvex)	Size	12mm
Flavor		Imprint Code	D;31
Contains			

Packaging

#	Item Code	Package Description	Marketing Start Date	Marketing End Date
1	NDC:65862-158-01	100 in 1 BOTTLE; Type 0: Not a Combination Product	08/06/2009	
2	NDC:65862-158-05	500 in 1 BOTTLE; Type 0: Not a Combination Product	08/06/2009	
3	NDC:65862-158-99	1000 in 1 BOTTLE; Type 0: Not a Combination Product	08/06/2009	

Marketing Information

Marketing Category	Application Number or Monograph Citation	Marketing Start Date	Marketing End Date
ANDA	ANDA040792	08/06/2009	

Labeler - Aurobindo Pharma Limited (650082092)

Establishment

Name	Address	ID/FEI	Business Operations
Aurobindo Pharma Limited		918917642	ANALYSIS(65862-158, 65862-693) , MANUFACTURE(65862-158, 65862-693)

Establishment

Name	Address	ID/FEI	Business Operations
APL HEALTHCARE LIMITED		650918514	ANALYSIS(65862-158, 65862-693) , MANUFACTURE(65862-158, 65862-693)

Revised: 1/2024

Aurobindo Pharma Limited