

## **FIBERCON- calcium polycarbophil tablet**

### **Foundation Consumer Brands**

*Disclaimer: Most OTC drugs are not reviewed and approved by FDA, however they may be marketed if they comply with applicable regulations and policies. FDA has not evaluated whether this product complies.*

-----  
**Fibercon®**

### **Drug Facts**

#### **Active ingredient (in each caplet)**

Calcium polycarbophil 625 mg equivalent to 500 mg polycarbophil

#### **Purpose**

Bulk-forming laxative

#### **Uses**

- relieves occasional constipation (irregularity)
- this product generally produces bowel movement in 12 to 72 hours

#### **Warnings**

##### **Choking**

Taking this product without adequate fluid may cause it to swell and block your throat or esophagus and may cause choking. Do not take this product if you have difficulty in swallowing. If you experience chest pain, vomiting, or difficulty in swallowing or breathing after taking this product, seek immediate medical attention.

##### **Ask a doctor before use if you have**

- abdominal pain, nausea, or vomiting
- a sudden change in bowel habits that lasts over a period of 2 weeks

**Ask a doctor or pharmacist before use if you are** taking any other drug. Take this product 2 or more hours before or after other drugs. All laxatives may affect how other drugs work.

**When using this product** do not use for more than 7 days unless directed by a doctor

**Stop use and ask a doctor if** rectal bleeding occurs or if you fail to have a bowel movement after use of this or any other laxative. These could be signs of a serious condition.

**Keep out of reach of children.** In case of overdose, get medical help or contact a Poison Control Center right away.

## Directions

- take each dose of this product with at least 8 ounces (a full glass) of water or other fluid. Taking this product without enough liquid may cause choking. See choking warning.
- FiberCon works naturally so continued use for one to three days is normally required to provide full benefit. Dosage may vary according to diet, exercise, previous laxative use or severity of constipation.
- adults and children 12 years of age and over: 2 caplets per dose. Do not take more than 8 caplets in 24 hours unless directed by a doctor.
- children under 12 years of age: ask a doctor

## Other information

- **each caplet contains:** 140 mg calcium and 10 mg magnesium
- protect contents from moisture
- store at 20-25°C (68-77°F)

## Inactive ingredients

caramel, crospovidone, hypromellose, magnesium stearate, microcrystalline cellulose, polyethylene glycol, silicon dioxide, sodium lauryl sulfate

## Questions or comments?

Call **1-888-594-0677** weekdays 9 AM to 5 PM EST

Distributed by: Foundation Consumer Brands, LLC  
Pittsburgh, PA 15212

## PRINCIPAL DISPLAY PANEL - 90 Caplet Bottle Carton

FiberCon®

Calcium Polycarbophil  
Bulk-Forming Laxative

Fiber Therapy for Irregularity

90 Caplets

**As Effective as Fiber Powders!**



TM

Convenient two pill dose

## **Easy To Take!**

- Unlike Psyllium, FiberCon® Won't Ferment to Cause Gas or Bloating
- Natural Action of Fiber
- Doctor Recommended

**FiberCon®**

**FiberCon®**

*Calcium Polycarbophil Bulk-Forming Laxative*

**Fiber Therapy for Irregularity**

**90** Caplets



TM

Distributed by: Foundation Consumer Brands, LLC  
Pittsburgh, PA 15212 ©2020

fibercon.com

## Drug Facts

**Active ingredient (in each caplet)**

Calcium polycarboxylate 625 mg equivalent to 500 mg polycarboxylate..... Bulk-forming laxative

### Uses

- relieves occasional constipation (irregularly)
- this product generally produces bowel movement in 12 to 72 hours

### Warnings

**Choking:** Taking this product without adequate fluid may cause it to swell and block your throat or esophagus and may cause choking. Do not take this product if you have difficulty in swallowing. If you experience chest pain, vomiting, or difficulty in swallowing or breathing after taking this product, seek immediate medical attention.

**Ask a doctor before use if you have**

- abdominal pain, nausea, or vomiting
- a sudden change in bowel habits that lasts over a period of 2 weeks

**Ask a doctor or pharmacist before use if you are taking any other drug.** Take this product 2 or more hours before or after other drugs. All laxatives may affect how other drugs work.

**When using this product do not use for more than 7 days unless directed by a doctor**

**Stop use and ask a doctor if rectal bleeding occurs or if you fail to have a bowel movement after use of this or any other laxative.** These could be signs of a serious condition.

**Keep out of reach of children.** In case of overdose, get medical help or contact a Poison Control Center right away.

### Directions

- take each dose of this product with at least 8 ounces (a full glass) of water or other fluid. Taking this product without enough fluid may cause choking. See choking warning.
- Fibercon works naturally so continued use for one to three days is normally required to provide full benefit. Dosage may vary according to diet, exercise, previous laxative use or severity of constipation.
- adults and children 12 years of age and over: 2 caplets per dose. Do not take more than 8 caplets in 24 hours unless directed by a doctor.
- children under 12 years of age: ask a doctor

### Other information

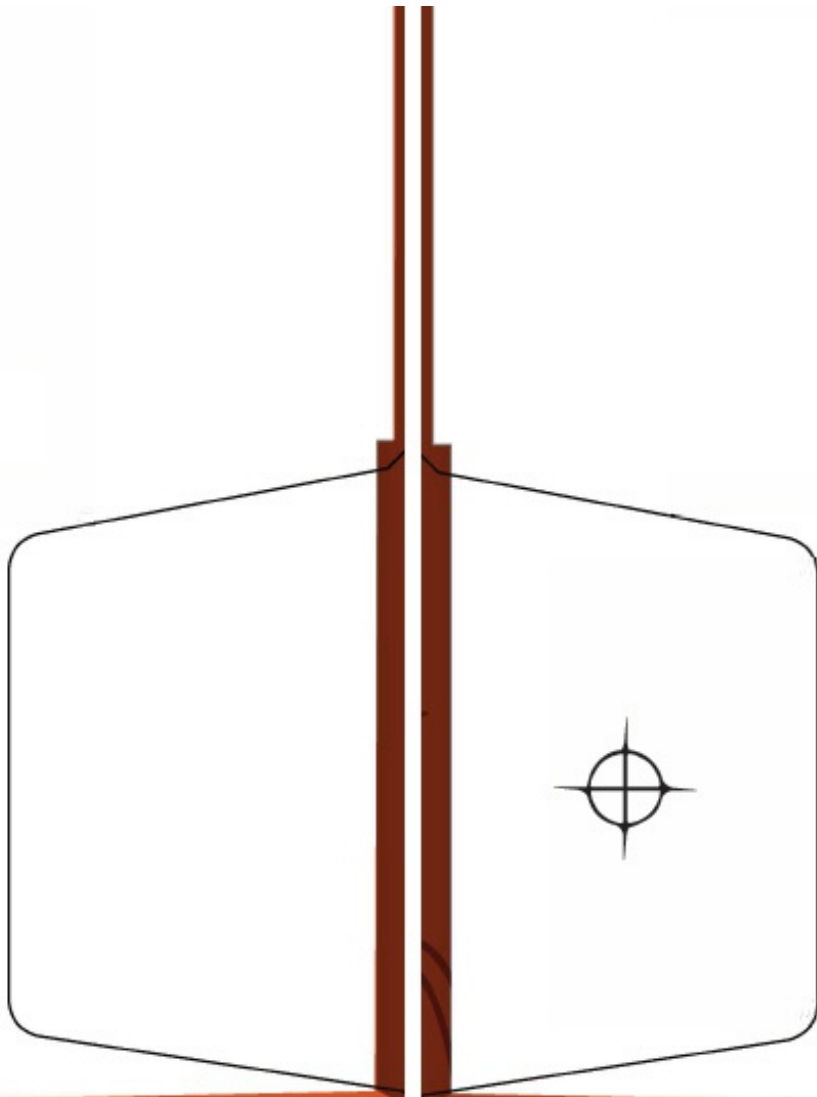
- each caplet contains: 140 mg calcium and 10 mg magnesium
- protect contents from moisture ■ store at 20-25°C (68-77°F)

### Inactive ingredients

caramel, croscopolone, hypromellose, magnesium stearate, microcrystalline cellulose, polyethylene glycol, silicon dioxide, sodium lauryl sulfate

### Questions or comments?

Call 1-888-594-0677 weekdays 9 AM to 5 PM EST



4V675 MJ C1

**CODE AREA**



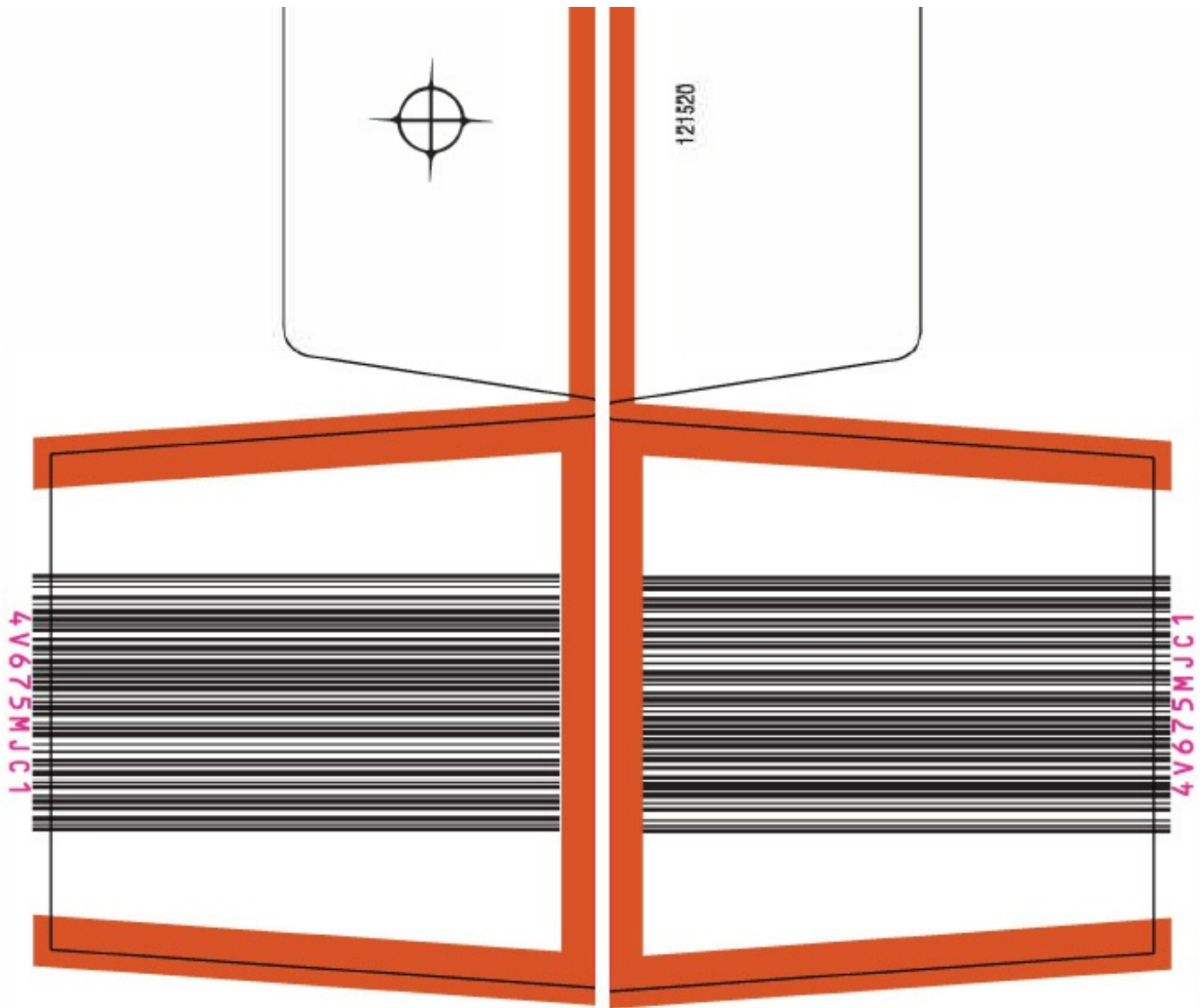
# ***FiberCon***<sup>®</sup>

*Calcium Polycarbophil Bulk-Forming Laxative*

***Fiber Therapy for Irregularity***

**Bottle sealed with printed foil under cap.  
Do Not Use if foil is torn or missing.**

**90** *Caplets*



## FIBERCON

calcium polycarbophil tablet

### Product Information

<b>Product Type</b>	HUMAN OTC DRUG	<b>Item Code (Source)</b>	NDC:80070-500
<b>Route of Administration</b>	ORAL		

### Active Ingredient/Active Moiety

Ingredient Name	Basis of Strength	Strength
<b>CALCIUM POLYCARBOPHIL</b> (UNII: 8F049NKY49) (POLYCARBOPHIL - UNII:W25LM17A4W)	CALCIUM POLYCARBOPHIL	625 mg

### Inactive Ingredients

Ingredient Name	Strength
-----------------	----------

<b>CARAMEL</b> (UNII: T9D99G2B1R)	
<b>MICROCRYSTALLINE CELLULOSE</b> (UNII: OP1R32D61U)	
<b>CROSPROVIDONE (120 .MU.M)</b> (UNII: 68401960MK)	
<b>HYPROMELLOSE, UNSPECIFIED</b> (UNII: 3NXW29V3WO)	
<b>MAGNESIUM STEARATE</b> (UNII: 70097M6I3O)	
<b>POLYETHYLENE GLYCOL, UNSPECIFIED</b> (UNII: 3WJQ05DW1A)	
<b>SILICON DIOXIDE</b> (UNII: ETJ7Z6XBU4)	
<b>SODIUM LAURYL SULFATE</b> (UNII: 368GB5141J)	

### Product Characteristics

<b>Color</b>	BROWN	<b>Score</b>	2 pieces
<b>Shape</b>	OVAL	<b>Size</b>	18mm
<b>Flavor</b>		<b>Imprint Code</b>	LL;F1
<b>Contains</b>			

### Packaging

#	Item Code	Package Description	Marketing Start Date	Marketing End Date
1	NDC:80070-500-14	1 in 1 CARTON	04/15/2021	
1		140 in 1 BOTTLE; Type 0: Not a Combination Product		
2	NDC:80070-500-90	1 in 1 CARTON	04/15/2021	
2		90 in 1 BOTTLE; Type 0: Not a Combination Product		

### Marketing Information

Marketing Category	Application Number or Monograph Citation	Marketing Start Date	Marketing End Date
OTC monograph not final	part334	04/15/2021	

**Labeler** - Foundation Consumer Brands (117603632)

Revised: 4/2021

Foundation Consumer Brands