

**ETOPOSIDE- etoposide capsule**  
**Onesource Specialty Pharma Limited**

-----  
**VePesid<sup>®</sup>**  
**(Etoposide Capsules, USP)**  
**Rx only**

**Warnings**

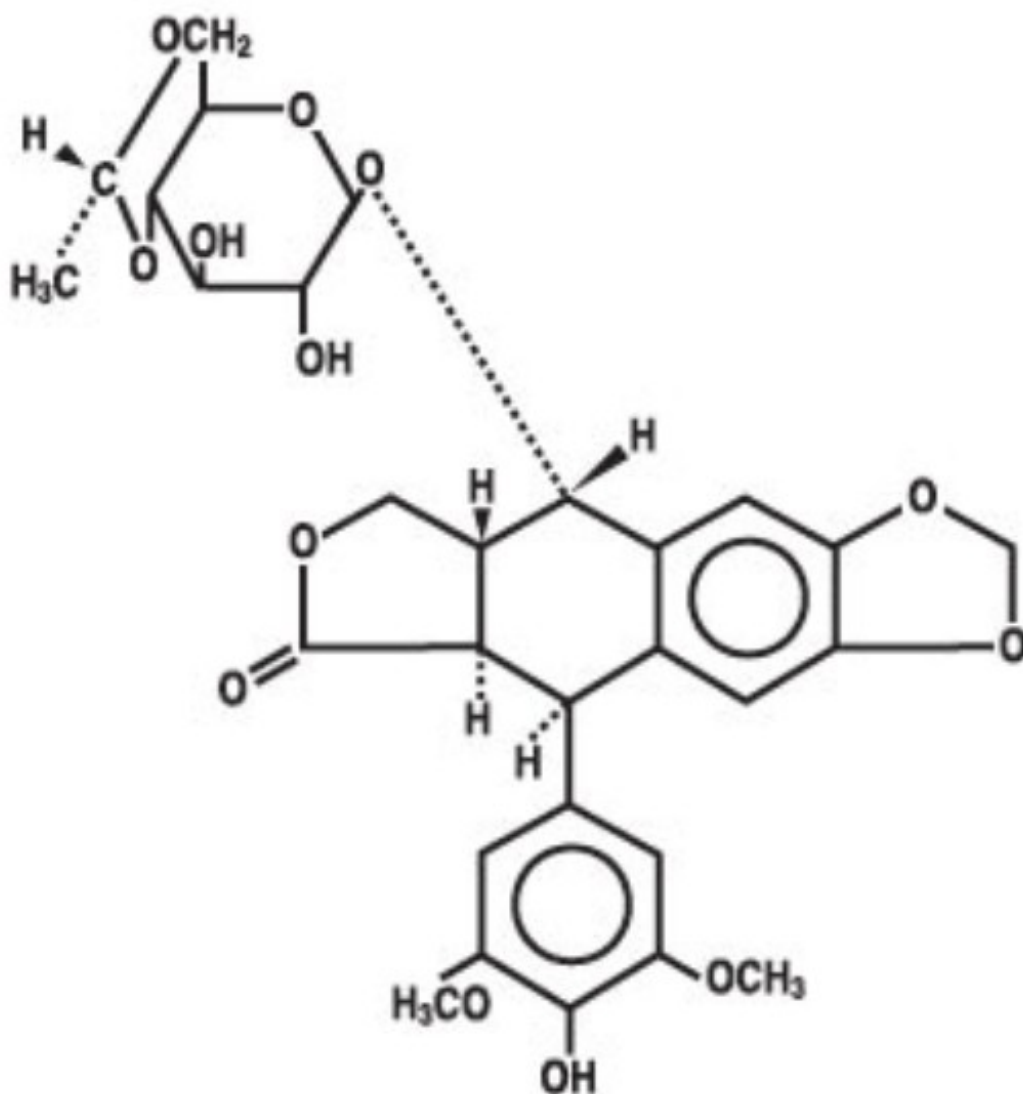
VePesid (etoposide) should be administered under the supervision of a qualified physician experienced in the use of cancer chemotherapeutic agents. Severe myelosuppression with resulting infection or bleeding may occur.

**DESCRIPTION**

VePesid<sup>®</sup> (etoposide, USP) (also commonly known as VP-16) is a semisynthetic derivative of podophyllotoxin used in the treatment of certain neoplastic diseases. It is 4'-demethylepipodophyllotoxin 9-[4,6-O-(R)-ethylidene-β-D-glucopyranoside]. It is very soluble in methanol and chloroform, slightly soluble in ethanol, and sparingly soluble in water and ether. It is made more miscible with water by means of organic solvents. It has a molecular weight of 588.56 and a molecular formula of C<sub>29</sub>H<sub>32</sub>O<sub>13</sub>.

VePesid is administered orally. VePesid is available as 50 mg pink capsules. Each liquid-filled, soft gelatin capsule contains 50 mg of etoposide, USP in a vehicle consisting of citric acid anhydrous, polyethylene glycol 400, glycerol anhydrous, purified water, gelatin, glycerol anhydrous, sorbitol liquid partially dehydrated, titanium dioxide, red iron oxide, and Glycerol 85%. The capsules are printed with black edible ink, containing isopropyl alcohol, purified water, hypromellose, propylene glycol, FD&C red #40, FD&C blue #1.

The structural formula is:



## CLINICAL PHARMACOLOGY

VePesid has been shown to cause metaphase arrest in chick fibroblasts. Its main effect, however, appears to be at the G<sub>2</sub> portion of the cell cycle in mammalian cells. Two different dose-dependent responses are seen. At high concentrations (10 mcg/mL or more), lysis of cells entering mitosis is observed. At low concentrations (0.3 to 10 mcg/mL), cells are inhibited from entering prophase. It does not interfere with microtubular assembly. The predominant macromolecular effect of etoposide appears to be the induction of DNA strand breaks by an interaction with DNA topoisomerase II or the formation of free radicals.

## Pharmacokinetics

On intravenous administration, the disposition of etoposide is best described as a biphasic process with a distribution half-life of about 1.5 hours and terminal elimination half-life ranging from 4 to 11 hours. Total body clearance values range from 33 to 48 mL/min or 16 to 36 mL/min/m<sup>2</sup> and, like the terminal elimination half-life, are independent of dose over a range of 100 to 600 mg/m<sup>2</sup>. Over the same dose range, the areas under

the plasma concentration versus time curves (AUC) and the maximum plasma concentration ( $C_{max}$ ) values increase linearly with dose. Etoposide does not accumulate in the plasma following daily administration of 100 mg/m<sup>2</sup> for 4 to 5 days.

The mean volumes of distribution at steady-state fall in the range of 18 to 29 liters or 7 to 17 L/m<sup>2</sup>. Etoposide enters the CSF (cerebrospinal fluid) poorly. Although it is detectable in CSF and intracerebral tumors, the concentrations are lower than in extracerebral tumors and in plasma. Etoposide concentrations are higher in normal lung than in lung metastases and are similar in primary tumors and normal tissues of the myometrium. In vitro, etoposide is highly protein bound (97%) to human plasma proteins. An inverse relationship between plasma albumin levels and etoposide renal clearance is found in children. In a study determining the effect of other therapeutic agents on the in vitro binding of <sup>14</sup>C-etoposide to human serum proteins, only phenylbutazone, sodium salicylate, and aspirin displaced protein-bound etoposide at concentrations achieved in vivo.

Etoposide binding ratio correlates directly with serum albumin in patients with cancer and in normal volunteers. The unbound fraction of etoposide significantly correlated with bilirubin in a population of cancer patients. Data have suggested a significant inverse correlation between serum albumin concentration and free fraction of etoposide (see PRECAUTIONS).

After intravenous administration of <sup>14</sup>C-etoposide (100 to 124 mg/m<sup>2</sup>), mean recovery of radioactivity in the urine was 56% of the dose at 120 hours, 45% of which was excreted as etoposide; fecal recovery of radioactivity was 44% of the dose at 120 hours.

In children, approximately 55% of the dose is excreted in the urine as etoposide in 24 hours. The mean renal clearance of etoposide is 7 to 10 mL/min/m<sup>2</sup> or about 35% of the total body clearance over a dose range of 80 to 600 mg/m<sup>2</sup>. Etoposide, therefore, is cleared by both renal and nonrenal processes, i.e., metabolism and biliary excretion. The effect of renal disease on plasma etoposide clearance is not known.

Biliary excretion of unchanged drug and/or metabolites is an important route of etoposide elimination as fecal recovery of radioactivity is 44% of the intravenous dose. The hydroxy acid metabolite [4'-demethylepipodophyllic acid-9-(4,6-O-(R)-ethylidene-β-D-glucopyranoside)], formed by opening of the lactone ring, is found in the urine of adults and children. It is also present in human plasma, presumably as the trans isomer. Glucuronide and/or sulfate conjugates of etoposide are also excreted in human urine. Only 8% or less of an intravenous dose is excreted in the urine as radiolabeled metabolites of <sup>14</sup>C-etoposide. In addition, O-demethylation of the dimethoxyphenol ring occurs through the CYP450 3A4 isoenzyme pathway to produce the corresponding catechol.

After either intravenous infusion or oral capsule administration, the  $C_{max}$  and AUC values exhibit marked intra- and inter-subject variability. This results in variability in the estimates of the absolute oral bioavailability of etoposide oral capsules.

$C_{max}$  and AUC values for orally administered etoposide capsules consistently fall in the same range as the  $C_{max}$  and AUC values for an intravenous dose of one-half the size of the oral dose. The overall mean value of oral capsule bioavailability is approximately 50% (range, 25% to 75%). The bioavailability of etoposide capsules appears to be linear up to a dose of at least 250 mg/m<sup>2</sup>.

There is no evidence of a first-pass effect for etoposide. For example, no correlation exists between the absolute oral bioavailability of etoposide capsules and nonrenal clearance. No evidence exists for any other differences in etoposide metabolism and excretion after administration of oral capsules as compared to intravenous infusion.

In adults, the total body clearance of etoposide is correlated with creatinine clearance, serum albumin concentration, and nonrenal clearance. Patients with impaired renal function receiving etoposide have exhibited reduced total body clearance, increased AUC and a lower volume of distribution at steady state ( **see PRECAUTIONS**). Use of cisplatin therapy is associated with reduced total body clearance. In children, elevated serum SGPT levels are associated with reduced drug total body clearance. Prior use of cisplatin may also result in a decrease of etoposide total body clearance in children. Although some minor differences in pharmacokinetic parameters between age and gender have been observed, these differences were not considered clinically significant.

## **INDICATIONS AND USAGE**

VePesid (etoposide) is indicated in the management of:

**Small Cell Lung Cancer**—Etoposide capsules in combination with other approved chemotherapeutic agents as first line treatment in patients with small cell lung cancer.

## **CONTRAINDICATIONS**

VePesid is contraindicated in patients who have demonstrated a previous hypersensitivity to etoposide or any component of the formulation.

## **WARNINGS**

Patients being treated with VePesid must be frequently observed for myelosuppression both during and after therapy. Myelosuppression resulting in death has been reported. Dose-limiting bone marrow suppression is the most significant toxicity associated with VePesid therapy. Therefore, the following studies should be obtained at the start of therapy and prior to each subsequent cycle of VePesid: platelet count, hemoglobin, white blood cell count, and differential. The occurrence of a platelet count below 50,000/mm<sup>3</sup> or an absolute neutrophil count below 500/mm<sup>3</sup> is an indication to withhold further therapy until the blood counts have sufficiently recovered.

## **Pregnancy**

Etoposide can cause fetal harm when administered to a pregnant woman. Etoposide has been shown to be teratogenic in mice and rats.

In rats, an intravenous etoposide dose of 0.4 mg/kg/day (about 1/20th of the human dose on a mg/m<sup>2</sup> basis) during organogenesis caused maternal toxicity, embryotoxicity, and teratogenicity (skeletal abnormalities, exencephaly, encephalocele, and anophthalmia); higher doses of 1.2 and 3.6 mg/kg/day (about 1/7th and 1/2 of human dose on a mg/m<sup>2</sup> basis) resulted in 90 and 100% embryonic resorptions. In mice, a single 1.0 mg/kg (1/16th of human dose on a mg/m<sup>2</sup> basis) dose of etoposide administered intraperitoneally on days 6, 7, or 8 of gestation caused embryotoxicity, cranial abnormalities, and major skeletal malformations. An I.P. dose of 1.5 mg/kg (about 1/10th of human dose on a mg/m<sup>2</sup> basis) on day 7 of gestation caused an increase in the incidence of intrauterine death and fetal malformations and a significant decrease in the average fetal body weight.

Women of childbearing potential should be advised to avoid becoming pregnant. If this drug is used during pregnancy, or if the patient becomes pregnant while receiving this

drug, the patient should be warned of the potential hazard to the fetus. Etoposide should be considered a potential carcinogen in humans. The occurrence of acute leukemia with or without a preleukemic phase has been reported in rare instances in patients treated with etoposide alone or in association with other neoplastic agents. The risk of development of a preleukemic or leukemic syndrome is unclear. Carcinogenicity tests with etoposide have not been conducted in laboratory animals.

## **PRECAUTIONS**

### **General**

In all instances where the use of VePesid is considered for chemotherapy, the physician must evaluate the need and usefulness of the drug against the risk of adverse reactions. Most such adverse reactions are reversible if detected early. If severe reactions occur, the drug should be reduced in dosage or discontinued and appropriate corrective measures should be taken according to the clinical judgment of the physician. Reinstitution of VePesid therapy should be carried out with caution, and with adequate consideration of the further need for the drug and alertness as to possible recurrence of toxicity.

Patients with low serum albumin may be at an increased risk for etoposide associated toxicities.

### **Drug Interactions**

High-dose cyclosporin A resulting in concentrations above 2,000 ng/mL administered with oral etoposide has led to an 80% increase in etoposide exposure with a 38% decrease in total body clearance of etoposide compared to etoposide alone.

### **Laboratory Tests**

Periodic complete blood counts should be done during the course of VePesid treatment. They should be performed prior to each cycle of therapy and at appropriate intervals during and after therapy. At least one determination should be done prior to each dose of VePesid.

### **Renal Impairment**

In patients with impaired renal function, the following initial dose modification should be considered based on measured creatinine clearance:

Measured Creatinine Clearance	>50 mL/min	15 to 50 mL/min
etoposide	100% of dose	75% of dose

Subsequent etoposide dosing should be based on patient tolerance and clinical effect.

Data are not available in patients with creatinine clearances <15 mL/min and further dose reduction should be considered in these patients.

### **Carcinogenesis, Mutagenesis, Impairment of Fertility**

Etoposide has been shown to be mutagenic in Ames assay.

Treatment of Swiss-Albino mice with 1.5 mg/kg I.P. of VePesid on day 7 of gestation increased the incidence of intrauterine death and fetal malformations as well as significantly decreased the average fetal body weight. Maternal weight gain was not affected.

Irreversible testicular atrophy was present in rats treated with etoposide intravenously for 30 days at 0.5 mg/kg/day (about 1/16th of the human dose on a mg/m<sup>2</sup> basis).

**Pregnancy**  
**Pregnancy Category D**

See **WARNINGS**.

**Nursing Mothers**

It is not known whether this drug is excreted in human milk. Because many drugs are excreted in human milk and because of the potential for serious adverse reactions in nursing infants from VePesid, a decision should be made whether to discontinue nursing or to discontinue the drug, taking into account the importance of the drug to the mother.

**Pediatric Use**

Safety and effectiveness in pediatric patients have not been established.

**Geriatric Use**

Of more than 600 patients in 4 clinical studies in the NDA databases who received VePesid or etoposide phosphate in combination with other chemotherapeutic agents for the treatment of small cell lung cancer (SCLC), about one-third were older than 65 years. When advanced age was determined to be a prognostic factor for response or survival in these studies, comparisons between treatment groups were performed for the elderly subset. In the one study (etoposide in combination with cyclophosphamide and vincristine compared with cyclophosphamide and vincristine or cyclophosphamide, vincristine, and doxorubicin) where age was a significant prognostic factor for survival, a survival benefit for elderly patients was observed for the etoposide regimen compared with the control regimens. No differences in myelosuppression were seen between elderly and younger patients in these studies except for an increased frequency of WHO Grade III or IV leukopenia among elderly patients in a study of etoposide phosphate or etoposide in combination with cisplatin. Elderly patients in this study also had more anorexia, mucositis, dehydration, somnolence, and elevated BUN levels than younger patients.

In 5 single-agent studies of etoposide phosphate in patients with a variety of tumor types, 34% of patients were age 65 years or more. WHO Grade III or IV leukopenia, granulocytopenia, and asthenia were more frequent among elderly patients.

Postmarketing experience also suggests that elderly patients may be more sensitive to some of the known adverse effects of etoposide, including myelosuppression, gastrointestinal effects, infectious complications, and alopecia.

Although some minor differences in pharmacokinetic parameters between elderly and nonelderly patients have been observed, these differences were not considered clinically significant.

Etoposide and its metabolites are known to be substantially excreted by the kidney, and the risk of adverse reactions to this drug may be greater in patients with impaired renal function. Because elderly patients are more likely to have decreased renal function, care

should be taken in dose selection, and it may be useful to monitor renal function (see **PRECAUTIONS: Renal Impairment** for recommended dosing adjustments in patients with renal impairment).

## **ADVERSE REACTIONS**

The following data on adverse reactions are based on both oral and intravenous administration of VePesid as a single agent, using several different dose schedules for treatment of a wide variety of malignancies.

### **Hematologic Toxicity**

Myelosuppression is dose related and dose limiting, with granulocyte nadirs occurring 7 to 14 days after drug administration and platelet nadirs occurring 9 to 16 days after drug administration. Bone marrow recovery is usually complete by day 20, and no cumulative toxicity has been reported. Fever and infection have also been reported in patients with neutropenia. Death associated with myelosuppression has been reported. The occurrence of acute leukemia with or without a preleukemic phase has been reported rarely in patients treated with VePesid in association with other antineoplastic agents. ( **See WARNINGS.**)

### **Gastrointestinal Toxicity**

Nausea and vomiting are the major gastrointestinal toxicities. The severity of such nausea and vomiting is generally mild to moderate with treatment discontinuation required in 1% of patients. Nausea and vomiting can usually be controlled with standard antiemetic therapy. Mild to severe mucositis/esophagitis may occur. Gastrointestinal toxicities are slightly more frequent after oral administration than after intravenous infusion.

### **Allergic Reactions**

Anaphylactic-like reactions characterized by chills, fever, tachycardia, bronchospasm, dyspnea, and/or hypotension have been reported to occur in 0.7% to 2% of patients receiving intravenous VePesid and in less than 1% of the patients treated with the oral capsules. These reactions have usually responded promptly to the cessation of the infusion and administration of pressor agents, corticosteroids, antihistamines, or volume expanders as appropriate; however, the reactions can be fatal. Hypertension and/or flushing have also been reported. Blood pressure usually normalizes within a few hours after cessation of the infusion. Anaphylactic-like reactions have occurred during the initial infusion of VePesid.

Facial/tongue swelling, coughing, diaphoresis, cyanosis, tightness in throat, laryngospasm, back pain, and/or loss of consciousness have sometimes occurred in association with the above reactions. In addition, an apparent hypersensitivity-associated apnea has been reported rarely.

Rash, urticaria, and/or pruritus have infrequently been reported at recommended doses. At investigational doses, a generalized pruritic erythematous maculopapular rash, consistent with perivasculitis, has been reported.

### **Alopecia**

Reversible alopecia, sometimes progressing to total baldness, was observed in up to 66% of patients.

#### **Other Toxicities**

The following adverse reactions have been infrequently reported: abdominal pain, aftertaste, constipation, dysphagia, asthenia, fatigue, malaise, somnolence, transient cortical blindness, optic neuritis, interstitial pneumonitis/pulmonary fibrosis, fever, seizure (occasionally associated with allergic reactions), Stevens-Johnson syndrome, and toxic epidermal necrolysis, pigmentation, and a single report of radiation recall dermatitis.

Hepatic toxicity, generally in patients receiving higher doses of the drug than those recommended, has been reported with VePesid. Metabolic acidosis has also been reported in patients receiving higher doses.

The incidences of adverse reactions in the table that follows are derived from multiple data bases from studies in 2,081 patients when VePesid was used either orally or by injection as a single agent.

---

<b>ADVERSE DRUG EFFECT</b>	<b>PERCENT RANGE OF REPORTED INCIDENCE</b>
<b>Hematologic toxicity</b>	
Leukopenia (less than 1,000 WBC/mm <sup>3</sup> )	3 to 17
Leukopenia (less than 4,000 WBC/mm <sup>3</sup> )	60 to 91
Thrombocytopenia (less than 50,000 platelets/mm <sup>3</sup> )	1 to 20
Thrombocytopenia (less than 100,000 platelets/mm <sup>3</sup> )	22 to 41
Anemia	0 to 33
<b>Gastrointestinal toxicity</b>	
Nausea and vomiting	31 to 43
Abdominal pain	0 to 2
Anorexia	10 to 13
Diarrhea	1 to 13
Stomatitis	1 to 6
Hepatic	0 to 3
Alopecia	8 to 66
Peripheral neurotoxicity	1 to 2
Hypotension	1 to 2
Allergic reaction	1 to 2

---

#### **OVERDOSAGE**

No proven antidotes have been established for etoposide overdose.

#### **DOSAGE AND ADMINISTRATION**

For recommended dosing adjustments in patients with renal impairment see

## **PRECAUTIONS**section.

Chemotherapy courses are repeated at 3- to 4-week intervals after adequate recovery from any toxicity.

### **VePesid Capsules**

In small cell lung cancer, the recommended dose of etoposide capsules is two times the IV dose rounded to the nearest 50 mg (i.e., two times 35 mg/m<sup>2</sup>/day for 4 days to 50 mg/m<sup>2</sup>/day for 5 days).

The dosage should be modified to take into account the myelosuppressive effects of other drugs in the combination or the effects of prior x-ray therapy or chemotherapy which may have compromised bone marrow reserve.

### **Administration Precautions**

To minimize the risk of dermal exposure, always wear impervious gloves when handling blister packs of individually labeled blisters containing VePesid capsules. This includes all handling activities in clinical settings, pharmacies, storerooms, and home healthcare settings, including during unpacking and inspection, transport within a facility, and dose preparation and administration.

### **Stability**

VePesid capsules must be stored under refrigeration 2°C to 8°C (36°F to 46°F). The capsules are stable for 24 months under such refrigeration conditions.

**Procedures for proper handling and disposal** of anticancer drugs should be considered. Several guidelines on this subject have been published.<sup>1-8</sup> There is no general agreement that all of the procedures recommended in the guidelines are necessary or appropriate.

### **How Supplied**

VePesid® (Etoposide Capsules, USP), 50 mg, are supplied as pink capsules with "V3545" printed in black and are available in blister packs of 20 individually labeled blisters, each containing one capsule (NDC 83270-451-05).

Capsules are to be stored under refrigeration, between 2°C to 8°C (36°F to 46°F). DO NOT FREEZE.

### **References**

1. ONS Clinical Practice Committee. Cancer Chemotherapy Guidelines and Recommendations for Practice. Pittsburgh, PA: Oncology Nursing Society; 1999:32- 41.
2. Recommendations for the safe handling of parenteral antineoplastic drugs. Washington, DC: Division of Safety, Clinical Center Pharmacy Department and Cancer Nursing Services, National Institutes of Health; 1992. US Dept of Health and Human Services, Public Health Service Publication NIH 92-2621.
3. AMA Council on Scientific Affairs. Guidelines for handling parenteral antineoplastics. JAMA. 1985;253:1590-1592.
4. National Study Commission on Cytotoxic Exposure. Recommendations for handling cytotoxic agents. 1987. Available from Louis P. Jeffrey, ScD, Chairman, National Study Commission on Cytotoxic Exposure. Massachusetts College of Pharmacy and Allied

Health Sciences, 179 Longwood Avenue, Boston, MA 02115.

5. Clinical Oncological Society of Australia. Guidelines and recommendations for safe handling of antineoplastic agents. Med J Aust. 1983;1:426-428.

6. Jones RB, Frank R, Mass T. Safe handling of chemotherapeutic agents: a report from The Mount Sinai Medical Center. CA Cancer J Clin. 1983;33:258-263.

7. American Society of Hospital Pharmacists. ASHP technical assistance bulletin on handling cytotoxic and hazardous drugs. Am J Hosp Pharm. 1990;47:1033-1049.

8. Controlling occupational exposure to hazardous drugs. (OSHA Work-Practice Guidelines.) Am J Health-Syst Pharm. 1996;53:1669-1685.

**Manufactured by:**

Eirgen Pharma Ltd  
Westside Business Park,  
Waterford, X91 YV67,  
Ireland

Rev. 05-2026-00

**PRINCIPAL DISPLAY PANEL**

NDC 83270-451-05

VePesid®

(Etoposide Capsules, USP)

50mg

20 Unit Dose Capsules

(2 Blister Strips 10 Capsules each)

Rx only



Unvarnished Area

LOT:  
EXP:  
S/N:

TTIN: 003 8270 451 05

1XXXXXXXXXX

NDC 83270-451-05

# VePesid® (Etoposide Capsules, USP)

**50 mg**

20 Unit Dose Capsules  
(2 Blister Strips of 10 Capsules each) Rx only

Capsules are to be stored under refrigeration, between 2°C to 8°C (36°F to 46°F). DO NOT FREEZE.

**CAUTION:** Federal law prohibits dispensing without prescription.

**Recommended Dosage:**  
See enclosed package insert.

See top flap for lot number and expiration date.

NDC 83270-451-05

# VePesid® (Etoposide Capsules, USP)

**50 mg**

20 Unit Dose Capsules  
(2 Blister Strips of 10 Capsules each) Rx only

Manufactured by:  
Eirgen Pharma Ltd  
Westside Business Park,  
Waterford, X91 YV67,  
Ireland (IRL)

Rev. 05-2026-00



NDC 83270-451-05

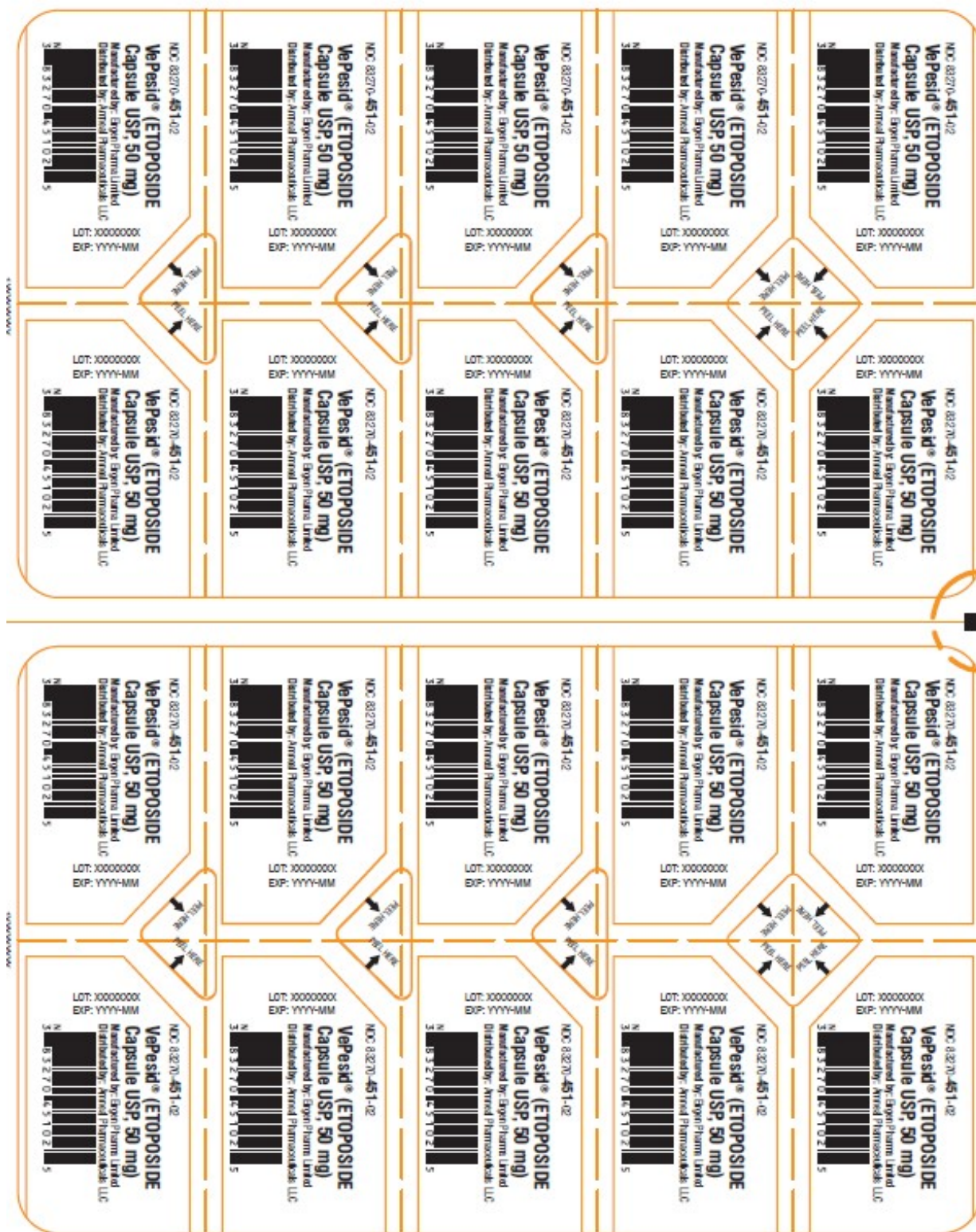
# VePesid® (Etoposide Capsules, USP)

**50 mg**

20 Unit Dose Capsules  
(2 Blister Strips of 10 Capsules each)

Rx only





## ETOPOSIDE

etoposide capsule

### Product Information

<b>Product Type</b>	HUMAN PRESCRIPTION DRUG	<b>Item Code (Source)</b>	NDC:83270-451
<b>Route of Administration</b>	ORAL		

**Active Ingredient/Active Moiety**

Ingredient Name	Basis of Strength	Strength
<b>ETOPOSIDE</b> (UNII: 6PLQ3CP4P3) (ETOPOSIDE - UNII:6PLQ3CP4P3)	ETOPOSIDE	50 mg

**Inactive Ingredients**

Ingredient Name	Strength
<b>ANHYDROUS CITRIC ACID</b> (UNII: XF417D3PSL)	
<b>POLYETHYLENE GLYCOL 400</b> (UNII: B697894SGQ)	
<b>GLYCERIN</b> (UNII: PDC6A3C0OX)	
<b>GELATIN</b> (UNII: 2G86QN327L)	
<b>SORBITOL</b> (UNII: 506T60A25R)	
<b>TITANIUM DIOXIDE</b> (UNII: 15FIX9V2JP)	
<b>FERRIC OXIDE RED</b> (UNII: 1K09F3G675)	
<b>WATER</b> (UNII: 059QF0K0OR)	
<b>HYPROMELLOSES</b> (UNII: 3NXW29V3WO)	
<b>FD&amp;C RED NO. 40</b> (UNII: WZB9127XOA)	
<b>FD&amp;C BLUE NO. 1</b> (UNII: H3R47K3TBD)	

**Product Characteristics**

<b>Color</b>	pink	<b>Score</b>	no score
<b>Shape</b>	CAPSULE	<b>Size</b>	8mm
<b>Flavor</b>		<b>Imprint Code</b>	V3545
<b>Contains</b>			

**Packaging**

#	Item Code	Package Description	Marketing Start Date	Marketing End Date
1	NDC:83270-451-05	20 in 1 CARTON; Type 0: Not a Combination Product	05/29/2026	

**Marketing Information**

Marketing Category	Application Number or Monograph Citation	Marketing Start Date	Marketing End Date
NDA	NDA019557	05/29/2026	

**Labeler** - Onesource Specialty Pharma Limited (867530307)**Registrant** - Onesource Specialty Pte. Limited (599466600)**Establishment**

Name	Address	ID/FEI	Business Operations
Eirgen Pharma		0000000000	manufacture(83270-451) , analysis(83270-451) , pack(83270-451) ,

Revised: 5/2026

Onesource Specialty Pharma Limited