

# AMLODIPINE BESYLATE - amlodipine besylate tablet

## BIOMES PHARMACEUTICALS LLC

-----

### HIGHLIGHTS OF PRESCRIBING INFORMATION

These highlights do not include all the information needed to use AMLODIPINE BESYLATE TABLETS, USP, safely and effectively. See full prescribing information for AMLODIPINE BESYLATE TABLETS, USP.  
AMLODIPINE BESYLATE TABLETS, USP for oral administration  
Initial U.S. Approval: 1987

These highlights do not include all the information needed to use AMLODIPINE BESYLATE TABLETS, USP, safely and effectively. See full prescribing information for AMLODIPINE BESYLATE TABLETS, USP.  
AMLODIPINE BESYLATE TABLETS, USP for oral administration  
Initial U.S. Approval: 1987

These highlights do not include all the information needed to use AMLODIPINE BESYLATE TABLETS, USP, safely and effectively. See full prescribing information for AMLODIPINE BESYLATE TABLETS, USP.  
AMLODIPINE BESYLATE TABLETS, USP for oral administration  
Initial U.S. Approval: 1987

### INDICATIONS AND USAGE

Amlodipine is a calcium channel blocker and may be used alone or in combination with other antihypertensive and antianginal agents for the treatment of:

- Hypertension (1.1)
  - Amlodipine besylate tablet, USP is indicated for the treatment of hypertension, to lower blood pressure. Lowering blood pressure reduces the risk of fatal and nonfatal cardiovascular events, primarily strokes and myocardial infarctions
- Coronary Artery Disease (1.2)
  - Chronic Stable Angina
  - Vasospastic Angina (Prinzmetal's or Variant Angina)
  - Angiographically Documented Coronary Artery Disease in patients without heart failure or an ejection fraction < 40%

### DOSAGE AND ADMINISTRATION

- Adult recommended starting dose: 5 mg once daily with maximum dose 10 mg once daily. (2.1)
  - Small, fragile, or elderly patients, or patients with hepatic insufficiency may be started on 2.5 mg once daily. (2.1)
- Pediatric starting dose: 2.5 mg to 5 mg once daily. (2.2)

**Important Limitation:** Doses in excess of 5 mg daily have not been studied in pediatric patients. (2.2)

### DOSAGE FORMS AND STRENGTHS

- Tablets: 2.5 mg, 5mg and 10 mg Tablets (3)

### CONTRAINDICATIONS

- Known sensitivity to amlodipine (4)

### WARNINGS AND PRECAUTIONS

- Symptomatic hypotension is possible, particularly in patients with severe aortic stenosis. However, acute hypotension is unlikely. (5.1)
- Worsening angina and acute myocardial infarction can develop after starting or increasing the dose of amlodipine, particularly in patients with severe obstructive coronary artery disease. (5.2)
- Titrate slowly in patients with severe hepatic impairment. (5.3)

### ADVERSE REACTIONS

Most common adverse reactions to amlodipine is edema which occurred in a dose related manner. Other adverse experiences not dose related but reported with an incidence >1% are fatigue, nausea, abdominal pain, and somnolence. (6)  
**To report SUSPECTED ADVERSE REACTIONS, contact Vivimed Labs USA at 1-732-398-008 or FDA at 1-800-FDA-1088 or [www.fda.gov/medwatch](http://www.fda.gov/medwatch).**

### DRUG INTERACTIONS

- Do not exceed doses greater than 20 mg daily of simvastatin. (7.2)

----- **USE IN SPECIFIC POPULATIONS** -----

- Pregnancy: Use only if the potential benefit justifies the risk.(8.1)
- Nursing: Discontinue when administering amlodipine. (8.3)
- Pediatric: Effect on patients less than 6 years old is not known. (8.4)
- Geriatric: Start dosing at the low end of the dose range. (8.5)

See 17 for **PATIENT COUNSELING INFORMATION**.

Revised: 7/2018

---

**FULL PRESCRIBING INFORMATION: CONTENTS\***

**1 INDICATIONS AND USAGE**

- 1.1 Hypertension
- 1.2 Coronary Artery Disease (CAD)

**2 DOSAGE AND ADMINISTRATION**

- 2.1 Adults
- 2.2 Children

**3 DOSAGE FORMS AND STRENGTHS**

**4 CONTRAINDICATIONS**

**5 WARNINGS AND PRECAUTIONS**

- 5.1 Hypotension
- 5.2 Increased Angina or Myocardial Infarction
- 5.3 Patients with Hepatic Failure

**6 ADVERSE REACTIONS**

- 6.1 Clinical Trials Experience
- 6.2 Postmarketing Experience

**7 DRUG INTERACTIONS**

- 7.1 Impact of Other Drugs on Amlodipine
- 7.2 Impact of Amlodipine on Other Drugs

**8 USE IN SPECIFIC POPULATIONS**

- 8.1 Pregnancy
- 8.3 Nursing Mothers
- 8.4 Pediatric Use
- 8.5 Geriatric Use

**10 OVERDOSAGE**

**11 DESCRIPTION**

**12 CLINICAL PHARMACOLOGY**

- 12.1 Mechanism of Action
- 12.2 Pharmacodynamics
- 12.3 Pharmacokinetics
- 12.4 Pediatric Patients

**13 NONCLINICAL TOXICOLOGY**

- 13.1 Carcinogenesis, Mutagenesis, Impairment of Fertility

**14 CLINICAL STUDIES**

- 14.1 Effects in Hypertension
- 14.2 Effects in Chronic Stable Angina
- 14.3 Effects in Vasospastic Angina
- 14.4 Effects in Documented Coronary Artery Disease
- 14.5 Studies in Patients with Heart Failure

**16 HOW SUPPLIED/STORAGE AND HANDLING**  
**PATIENT INFORMATION LEAFLET**

# Amlodipine Besylate Tablets, USP

## Rx Only

\* Sections or subsections omitted from the full prescribing information are not listed.

---

## FULL PRESCRIBING INFORMATION

### 1 INDICATIONS AND USAGE

#### 1.1 Hypertension

Amlodipine besylate tablet, USP is indicated for the treatment of hypertension, to lower blood pressure. Lowering blood pressure reduces the risk of fatal and nonfatal cardiovascular events, primarily strokes and myocardial infarctions. These benefits have been seen in controlled trials of antihypertensive drugs from a wide variety of pharmacologic classes including amlodipine.

Control of high blood pressure should be part of comprehensive cardiovascular risk management, including, as appropriate, lipid control, diabetes management, antithrombotic therapy, smoking cessation, exercise, and limited sodium intake. Many patients will require more than one drug to achieve blood pressure goals. For specific advice on goals and management, see published guidelines, such as those of the National High Blood Pressure Education Program's Joint National Committee on Prevention, Detection, Evaluation, and Treatment of High Blood Pressure (JNC).

Numerous antihypertensive drugs, from a variety of pharmacologic classes and with different mechanisms of action, have been shown in randomized controlled trials to reduce cardiovascular morbidity and mortality, and it can be concluded that it is blood pressure reduction, and not some other pharmacologic property of the drugs, that is largely responsible for those benefits. The largest and most consistent cardiovascular outcome benefit has been a reduction in the risk of stroke, but reductions in myocardial infarction and cardiovascular mortality also have been seen regularly.

Elevated systolic or diastolic pressure causes increased cardiovascular risk, and the absolute risk increase per mmHg is greater at higher blood pressures, so that even modest reductions of severe hypertension can provide substantial benefit. Relative risk reduction from blood pressure reduction is similar across populations with varying absolute risk, so the absolute benefit is greater in patients who are at higher risk independent of their hypertension (for example, patients with diabetes or hyperlipidemia), and such patients would be expected to benefit from more aggressive treatment to a lower blood pressure goal.

Some antihypertensive drugs have smaller blood pressure effects (as monotherapy) in black patients, and many antihypertensive drugs have additional approved indications and effects (e.g., on angina, heart failure, or diabetic kidney disease). These considerations may guide selection of therapy.

Amlodipine besylate tablet, USP may be used alone or in combination with other antihypertensive agents.

#### 1.2 Coronary Artery Disease (CAD)

##### Chronic Stable Angina

Amlodipine besylate tablet, USP is indicated for the symptomatic treatment of chronic stable angina. Amlodipine may be used alone or in combination with other antianginal agents.

##### Vasospastic Angina (Prinzmetal's or Variant Angina)

Amlodipine besylate tablet, USP is indicated for the treatment of confirmed or suspected vasospastic

angina. Amlodipine besylate tablet, USP may be used as monotherapy or in combination with other antianginal agents.

### Angiographically Documented CAD

In patients with recently documented CAD by angiography and without heart failure or an ejection fraction <40%, Amlodipine besylate tablet, USP is indicated to reduce the risk of hospitalization for angina and to reduce the risk of a coronary revascularization procedure.

## **2 DOSAGE AND ADMINISTRATION**

### **2.1 Adults**

The usual initial antihypertensive oral dose of Amlodipine besylate tablet, USP is 5 mg once daily, and the a maximum dose is 10 mg once daily.

Small, fragile, or elderly patients, or patients with hepatic insufficiency may be started on 2.5 mg once daily and this dose may be used when adding Amlodipine besylate tablet, USP to other antihypertensive therapy.

Adjust dosage according to blood pressure goals. In general, wait 7 to 14 days between titration steps. Titrate more rapidly, however, if clinically warranted, provided the patient is assessed frequently.

*Angina:* The recommended dose for chronic stable or vasospastic angina is 5 to 10 mg, with the lower dose suggested in the elderly and in patients with hepatic insufficiency. Most patients will require 10 mg for adequate effect.

*Coronary artery disease:* The recommended dose range for patients with coronary artery disease is 5 to 10 mg once daily. In clinical studies, the majority of patients required 10 mg [*see Clinical Studies (14.4)*].

### **2.2 Children**

The effective antihypertensive oral dose in pediatric patients ages 6 to 17 years is 2.5 mg to 5 mg once daily. Doses in excess of 5 mg daily have not been studied in pediatric patients [*see Clinical Pharmacology (12.4), Clinical Studies (14.1)*].

## **3 DOSAGE FORMS AND STRENGTHS**

Tablets: 2.5 mg white, round, flat face beveled edge tablets debossed “V” on one side and “20” on the other side.

Tablets: 5 mg white, round, flat face beveled edge tablets debossed “V” on one side and “21” on the other side.

Tablets: 10 mg white, round, flat face beveled edge tablets debossed “V 22” on one side and plain on the other side.

## **4 CONTRAINDICATIONS**

Amlodipine besylate tablet, USP is contraindicated in patients with known sensitivity to amlodipine.

## **5 WARNINGS AND PRECAUTIONS**

### **5.1 Hypotension**

Symptomatic hypotension is possible, particularly in patients with severe aortic stenosis. Because of the

gradual onset of action, acute hypotension is unlikely.

## 5.2 Increased Angina or Myocardial Infarction

Worsening angina and acute myocardial infarction can develop after starting or increasing the dose of amlodipine, particularly in patients with severe obstructive coronary artery disease.

## 5.3 Patients with Hepatic Failure

Because amlodipine is extensively metabolized by the liver and the plasma elimination half-life ( $t_{1/2}$ ) is 56 hours in patients with impaired hepatic function, titrate slowly when administering amlodipine to patients with severe hepatic impairment.

## 6 ADVERSE REACTIONS

### 6.1 Clinical Trials Experience

Because clinical trials are conducted under widely varying conditions, adverse reaction rates observed in the clinical trials of a drug cannot be directly compared to rates in the clinical trials of another drug and may not reflect the rates observed in practice.

Amlodipine has been evaluated for safety in more than 11,000 patients in U.S. and foreign clinical trials. In general, treatment with amlodipine was well-tolerated at doses up to 10 mg daily. Most adverse reactions reported during therapy with amlodipine were of mild or moderate severity. In controlled clinical trials directly comparing amlodipine (N=1,730) at doses up to 10 mg to placebo (N=1,250), discontinuation of amlodipine because of adverse reactions was required in only about 1.5% of patients and was not significantly different from placebo (about 1%). The most commonly reported side effects more frequent than placebo are reflected in the table below. The incidence (%) of side effects that occurred in a dose related manner are as follows:

	Placebo	Amlodipine		
		2.5mg	5mg	10mg
	N=250	N=275	N=296	N=268
Edema	0.6	1.8	3.0	10.8
Dizziness	1.5	1.1	3.4	3.4
Flushing	0.0	0.7	1.4	2.6
Palpitation	0.6	0.7	1.4	4.5

Other adverse reactions that were not clearly dose related but were reported with an incidence greater than 1% in placebo-controlled clinical trials include the following:

Placebo(%)	Amlodipine(%)
(N=1,250)	(N=1,730)

Fatigue 2.8	4.5
Nausea 1.9	2.9
Abdominal Pain 0.3	1.6
Somnolence 0.6	1.4

For several adverse experiences that appear to be drug and dose related, there was a greater incidence in women than men associated with amlodipine treatment as shown in the following table:

Placebo	Amlodipine			
	Female=% (N=336)	Male=% (N=1,218)	Female=% (N=512)	Male=% (N=914)
Edema	5.1	5.6	14.6	1.4
Flushing	0.9	1.5	4.5	0.3
Palpitations	0.9	1.4	3.3	0.9
Somnolence	0.3	1.3	1.6	0.8

The following events occurred in <1% but >0.1% of patients in controlled clinical trials or under conditions of open trials or marketing experience where a causal relationship is uncertain; they are listed to alert the physician to a possible relationship:

**Cardiovascular:** arrhythmia (including ventricular tachycardia and atrial fibrillation), bradycardia, chest pain, peripheral ischemia, syncope, tachycardia, vasculitis.

**Central and Peripheral Nervous System:** hypoesthesia, neuropathy peripheral, paresthesia, tremor, vertigo.

**Gastrointestinal:** anorexia, constipation, dysphagia, diarrhea, flatulence, pancreatitis, vomiting, gingival hyperplasia.

**General:** allergic reaction, asthenia,<sup>1</sup> back pain, hot flushes, malaise, pain, rigors, weight gain, weight decrease.

**Musculoskeletal System:** arthralgia, arthrosis, muscle cramps,<sup>1</sup> myalgia.

**Psychiatric:** sexual dysfunction (male<sup>1</sup> and female), insomnia, nervousness, depression, abnormal dreams, anxiety, depersonalization.

**Respiratory System:** dyspnea,<sup>1</sup> epistaxis.

**Skin and Appendages:** angioedema, erythema multiforme, pruritus,<sup>1</sup> rash,<sup>1</sup> rash erythematous, rash maculopapular.

**Special Senses:** abnormal vision, conjunctivitis, diplopia, eye pain, tinnitus.

**Urinary System:** micturition frequency, micturition disorder, nocturia.

**Autonomic Nervous System:** dry mouth, sweating increased.

**Metabolic and Nutritional:** hyperglycemia, thirst.

**Hemopoietic:** leukopenia, purpura, thrombocytopenia.

<sup>1</sup> These events occurred in less than 1% in placebo-controlled trials, but the incidence of these side effects was between 1% and 2% in all multiple dose studies.

Amlodipine therapy has not been associated with clinically significant changes in routine laboratory tests. No clinically relevant changes were noted in serum potassium, serum glucose, total triglycerides, total cholesterol, HDL cholesterol, uric acid, blood urea nitrogen, or creatinine.

In the CAMELOT and PREVENT studies [see *Clinical Studies (14.4)*], the adverse event profile was similar to that reported previously (see above), with the most common adverse event being peripheral edema.

## 6.2 Postmarketing Experience

Because these reactions are reported voluntarily from a population of uncertain size, it is not always possible to reliably estimate their frequency or establish a causal relationship to drug exposure.

The following postmarketing event has been reported infrequently where a causal relationship is uncertain: gynecomastia. In postmarketing experience, jaundice and hepatic enzyme elevations (mostly consistent with cholestasis or hepatitis), in some cases severe enough to require hospitalization, have been reported in association with use of amlodipine.

Postmarketing reporting has also revealed a possible association between extrapyramidal disorder and amlodipine.

Amlodipine has been used safely in patients with chronic obstructive pulmonary disease, well-compensated congestive heart failure, coronary artery disease, peripheral vascular disease, diabetes mellitus, and abnormal lipid profiles.

## 7 DRUG INTERACTIONS

### 7.1 Impact of Other Drugs on Amlodipine

#### *CYP3A Inhibitors*

Coadministration with CYP3A inhibitors (moderate and strong) results in increased systemic exposure to amlodipine and may require dose reduction. Monitor for symptoms of hypotension and edema when amlodipine is coadministered with CYP3A inhibitors to determine the need for dose adjustment [see *Clinical Pharmacology (12.3)*].

#### *CYP3A Inducers*

No information is available on the quantitative effects of CYP3A inducers on amlodipine. Blood pressure should be closely monitored when amlodipine is coadministered with CYP3A inducers.

#### *Sildenafil*

Monitor for hypotension when sildenafil is coadministered with amlodipine [see *Clinical Pharmacology (12.2)*].

### 7.2 Impact of Amlodipine on Other Drugs

#### *Simvastatin*

Coadministration of simvastatin with amlodipine increases the systemic exposure of simvastatin. Limit the dose of simvastatin in patients on amlodipine to 20 mg daily [see *Clinical Pharmacology (12.3)*].

#### *Immunosuppressants*

Amlodipine may increase the systemic exposure of cyclosporine or tacrolimus when coadministered. Frequent monitoring of trough blood levels of cyclosporine and tacrolimus is recommended and adjust the dose when appropriate [see *Clinical Pharmacology (12.3)*].

## **8 USE IN SPECIFIC POPULATIONS**

### **8.1 Pregnancy**

Pregnancy Category C

There are no adequate and well-controlled studies in pregnant women. Amlodipine should be used during pregnancy only if the potential benefit justifies the risk to the fetus.

No evidence of teratogenicity or other embryo/fetal toxicity was found when pregnant rats and rabbits were treated orally with amlodipine maleate at doses up to 10 mg amlodipine/kg/day (respectively, 8 times<sup>2</sup> and 23 times<sup>2</sup> the maximum recommended human dose of 10 mg on a mg/m<sup>2</sup> basis) during their respective periods of major organogenesis. However, litter size was significantly decreased (by about 50%) and the number of intrauterine deaths was significantly increased (about 5-fold) in rats receiving amlodipine maleate at a dose equivalent to 10 mg amlodipine/kg/day for 14 days before mating and throughout mating and gestation. Amlodipine maleate has been shown to prolong both the gestation period and the duration of labor in rats at this dose.

<sup>2</sup> Based on patient weight of 50 kg.

### **8.3 Nursing Mothers**

It is not known whether amlodipine is excreted in human milk. In the absence of this information, it is recommended that nursing be discontinued while amlodipine is administered.

### **8.4 Pediatric Use**

Amlodipine (2.5 to 5 mg daily) is effective in lowering blood pressure in patients 6 to 17 years [see *Clinical Studies (14.1)*]. Effect of amlodipine on blood pressure in patients less than 6 years of age is not known.

### **8.5 Geriatric Use**

Clinical studies of amlodipine did not include sufficient numbers of subjects aged 65 and over to determine whether they respond differently from younger subjects. Other reported clinical experience has not identified differences in responses between the elderly and younger patients. In general, dose selection for an elderly patient should be cautious, usually starting at the low end of the dosing range, reflecting the greater frequency of decreased hepatic, renal, or cardiac function, and of concomitant disease or other drug therapy. Elderly patients have decreased clearance of amlodipine with a resulting increase of AUC of approximately 40–60%, and a lower initial dose may be required [see *Dosage and Administration (2.1)*].

## **10 OVERDOSAGE**

Overdosage might be expected to cause excessive peripheral vasodilation with marked hypotension and possibly a reflex tachycardia. In humans, experience with intentional overdosage of amlodipine is limited.

Single oral doses of amlodipine maleate equivalent to 40 mg amlodipine/kg and 100 mg amlodipine/kg in mice and rats, respectively, caused deaths. Single oral amlodipine maleate doses equivalent to 4 or more mg amlodipine/kg or higher in dogs (11 or more times the maximum recommended human dose on



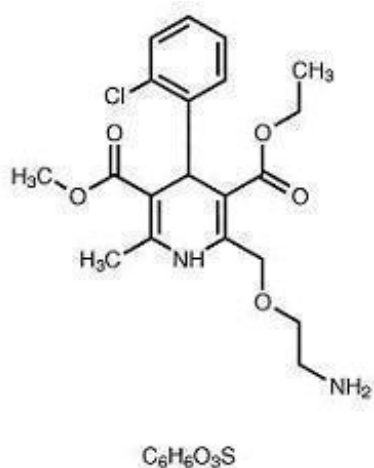
a mg/m<sup>2</sup> basis) caused a marked peripheral vasodilation and hypotension.

If massive overdose should occur, initiate active cardiac and respiratory monitoring. Frequent blood pressure measurements are essential. Should hypotension occur, provide cardiovascular support including elevation of the extremities and the judicious administration of fluids. If hypotension remains unresponsive to these conservative measures, consider administration of vasopressors (such as phenylephrine) with attention to circulating volume and urine output. As amlodipine is highly protein bound, hemodialysis is not likely to be of benefit.

## 11 DESCRIPTION

Amlodipine besylate, USP, is the besylate salt of amlodipine, a long-acting calcium channel blocker.

Amlodipine besylate is chemically described as 3-Ethyl-5-methyl (±)-2-[(2-aminoethoxy)methyl]-4-(2-chlorophenyl)-1,4-dihydro-6-methyl-3,5-pyridinedicarboxylate, monobenzenesulphonate. Its molecular formula is C<sub>20</sub>H<sub>25</sub>ClN<sub>2</sub>O<sub>5</sub>•C<sub>6</sub>H<sub>6</sub>O<sub>3</sub>S, and its structural formula is:



Amlodipine besylate is a white crystalline powder with a molecular weight of 567.1. It is slightly soluble in water and sparingly soluble in ethanol. Amlodipine Besylate Tablets are formulated as white tablets equivalent to 5 and 10 mg of amlodipine for oral administration. In addition to the active ingredient, amlodipine besylate, each tablet contains the following inactive ingredients: microcrystalline cellulose, dibasic calcium phosphate anhydrous, sodium starch glycolate, and magnesium stearate.

## 12 CLINICAL PHARMACOLOGY

### 12.1 Mechanism of Action

Amlodipine is a dihydropyridine calcium antagonist (calcium ion antagonist or slow-channel blocker) that inhibits the transmembrane influx of calcium ions into vascular smooth muscle and cardiac muscle. Experimental data suggest that amlodipine binds to both dihydropyridine and nondihydropyridine binding sites. The contractile processes of cardiac muscle and vascular smooth muscle are dependent upon the movement of extracellular calcium ions into these cells through specific ion channels. Amlodipine inhibits calcium ion influx across cell membranes selectively, with a greater effect on vascular smooth muscle cells than on cardiac muscle cells. Negative inotropic effects can be detected in vitro but such effects have not been seen in intact animals at therapeutic doses. Serum calcium concentration is not affected by amlodipine. Within the physiologic pH range, amlodipine is an ionized compound

(pKa=8.6), and its kinetic interaction with the calcium channel receptor is characterized by a gradual rate of association and dissociation with the receptor binding site, resulting in a gradual onset of effect.

Amlodipine is a peripheral arterial vasodilator that acts directly on vascular smooth muscle to cause a reduction in peripheral vascular resistance and reduction in blood pressure.

The precise mechanisms by which amlodipine relieves angina have not been fully delineated, but are thought to include the following:

**Exertional Angina:** In patients with exertional angina, amlodipine reduces the total peripheral resistance (afterload) against which the heart works and reduces the rate pressure product, and thus myocardial oxygen demand, at any given level of exercise.

**Vasospastic Angina:** amlodipine has been demonstrated to block constriction and restore blood flow in coronary arteries and arterioles in response to calcium, potassium epinephrine, serotonin, and thromboxane A<sub>2</sub> analog in experimental animal models and in human coronary vessels *in vitro*. This inhibition of coronary spasm is responsible for the effectiveness of amlodipine in vasospastic (Prinzmetal's or variant) angina.

## 12.2 Pharmacodynamics

**Hemodynamics:** Following administration of therapeutic doses to patients with hypertension, amlodipine produces vasodilation resulting in a reduction of supine and standing blood pressures. These decreases in blood pressure are not accompanied by a significant change in heart rate or plasma catecholamine levels with chronic dosing. Although the acute intravenous administration of amlodipine decreases arterial blood pressure and increases heart rate in hemodynamic studies of patients with chronic stable angina, chronic oral administration of amlodipine in clinical trials did not lead to clinically significant changes in heart rate or blood pressures in normotensive patients with angina.

With chronic once daily oral administration, antihypertensive effectiveness is maintained for at least 24 hours. Plasma concentrations correlate with effect in both young and elderly patients. The magnitude of reduction in blood pressure with amlodipine is also correlated with the height of pretreatment elevation; thus, individuals with moderate hypertension (diastolic pressure 105–114 mmHg) had about a 50% greater response than patients with mild hypertension (diastolic pressure 90–104 mmHg). Normotensive subjects experienced no clinically significant change in blood pressures (+1/–2 mmHg).

In hypertensive patients with normal renal function, therapeutic doses of amlodipine resulted in a decrease in renal vascular resistance and an increase in glomerular filtration rate and effective renal plasma flow without change in filtration fraction or proteinuria.

As with other calcium channel blockers, hemodynamic measurements of cardiac function at rest and during exercise (or pacing) in patients with normal ventricular function treated with amlodipine have generally demonstrated a small increase in cardiac index without significant influence on dP/dt or on left ventricular end diastolic pressure or volume. In hemodynamic studies, amlodipine has not been associated with a negative inotropic effect when administered in the therapeutic dose range to intact animals and man, even when coadministered with beta-blockers to man. Similar findings, however, have been observed in normal or well-compensated patients with heart failure with agents possessing significant negative inotropic effects.

**Electrophysiologic Effects:** Amlodipine does not change sinoatrial nodal function or atrioventricular conduction in intact animals or man. In patients with chronic stable angina, intravenous administration of 10 mg did not significantly alter A-H and H-V conduction and sinus node recovery time after pacing. Similar results were obtained in patients receiving amlodipine and concomitant beta-blockers. In clinical studies in which amlodipine was administered in combination with beta-blockers to patients with either hypertension or angina, no adverse effects on electrocardiographic parameters were observed. In clinical trials with angina patients alone, amlodipine therapy did not alter electrocardiographic intervals or produce higher degrees of AV blocks.

Drug interactions

*Sildenafil*: When amlodipine and sildenafil were used in combination, each agent independently exerted its own blood pressure lowering effect [see *Drug Interactions (7.1)*].

### 12.3 Pharmacokinetics

After oral administration of therapeutic doses of amlodipine, absorption produces peak plasma concentrations between 6 and 12 hours. Absolute bioavailability has been estimated to be between 64 and 90%. The bioavailability of amlodipine is not altered by the presence of food.

Amlodipine is extensively (about 90%) converted to inactive metabolites via hepatic metabolism with 10% of the parent compound and 60% of the metabolites excreted in the urine. *Ex vivo* studies have shown that approximately 93% of the circulating drug is bound to plasma proteins in hypertensive patients. Elimination from the plasma is biphasic with a terminal elimination half-life of about 30–50 hours. Steady-state plasma levels of amlodipine are reached after 7 to 8 days of consecutive daily dosing.

The pharmacokinetics of amlodipine are not significantly influenced by renal impairment. Patients with renal failure may therefore receive the usual initial dose.

Elderly patients and patients with hepatic insufficiency have decreased clearance of amlodipine with a resulting increase in AUC of approximately 40–60%, and a lower initial dose may be required. A similar increase in AUC was observed in patients with moderate to severe heart failure.

#### Drug interactions

In vitro data indicate that amlodipine has no effect on the human plasma protein binding of digoxin, phenytoin, warfarin, and indomethacin.

#### Impact of other drugs on amlodipine

Coadministered cimetidine, magnesium-and aluminum hydroxide antacids, sildenafil, and grapefruit juice have no impact on the exposure to amlodipine.

*CYP3A inhibitors*: Coadministration of a 180 mg daily dose of diltiazem with 5 mg amlodipine in elderly hypertensive patients resulted in a 60% increase in amlodipine systemic exposure. Erythromycin coadministration in healthy volunteers did not significantly change amlodipine systemic exposure. However, strong inhibitors of CYP3A (e.g., itraconazole, clarithromycin) may increase the plasma concentrations of amlodipine to a greater extent [see *Drug Interactions (7.1)*].

#### Impact of amlodipine on other drugs

Coadministered amlodipine does not affect the exposure to atorvastatin, digoxin, ethanol and the warfarin prothrombin response time.

*Simvastatin*: Coadministration of multiple doses of 10 mg of amlodipine with 80 mg simvastatin resulted in a 77% increase in exposure to simvastatin compared to simvastatin alone [see *Drug Interactions (7.2)*].

*Cyclosporine*: A prospective study in renal transplant patients (N=11) showed on an average of 40% increase in trough cyclosporine levels when concomitantly treated with amlodipine [see *Drug Interactions (7.2)*].

*Tacrolimus*: A prospective study in healthy Chinese volunteers (N=9) with CYP3A5 expressers showed a 2.5- to 4-fold increase in tacrolimus exposure when concomitantly administered with amlodipine compared to tacrolimus alone. This finding was not observed in CYP3A5 non-expressers (N= 6). However, a 3-fold increase in plasma exposure to tacrolimus in a renal transplant patient (CYP3A5 non-expresser) upon initiation of amlodipine for the treatment of post-transplant hypertension resulting in reduction of tacrolimus dose has been reported. Irrespective of the CYP3A5 genotype status, the possibility of an interaction cannot be excluded with these drugs [see *Drug Interactions (7.2)*].

### 12.4 Pediatric Patients

Sixty-two hypertensive patients aged 6 to 17 years received doses of amlodipine between 1.25 mg and 20 mg. Weight-adjusted clearance and volume of distribution were similar to values in adults.

## **13 NONCLINICAL TOXICOLOGY**

### **13.1 Carcinogenesis, Mutagenesis, Impairment of Fertility**

Rats and mice treated with amlodipine maleate in the diet for up to two years, at concentrations calculated to provide daily dosage levels of 0.5, 1.25, and 2.5 amlodipine mg/kg/day, showed no evidence of a carcinogenic effect of the drug. For the mouse, the highest dose was, on a mg/m<sup>2</sup> basis, similar to the maximum recommended human dose of 10 mg amlodipine/day.<sup>3</sup> For the rat, the highest dose was, on a mg/m<sup>2</sup> basis, about twice the maximum recommended human dose.<sup>3</sup>

Mutagenicity studies conducted with amlodipine maleate revealed no drug related effects at either the gene or chromosome level.

There was no effect on the fertility of rats treated orally with amlodipine maleate (males for 64 days and females for 14 days prior to mating) at doses up to 10 mg amlodipine/kg/day (8 times the maximum recommended human dose<sup>3</sup> of 10 mg/day on a mg/m<sup>2</sup> basis).

<sup>3</sup> Based on patient weight of 50 kg

## **14 CLINICAL STUDIES**

### **14.1 Effects in Hypertension**

#### **Adult Patients**

The antihypertensive efficacy of amlodipine has been demonstrated in a total of 15 double-blind, placebo-controlled, randomized studies involving 800 patients on amlodipine and 538 on placebo. Once daily administration produced statistically significant placebo-corrected reductions in supine and standing blood pressures at 24 hours postdose, averaging about 12/6 mmHg in the standing position and 13/7 mmHg in the supine position in patients with mild to moderate hypertension. Maintenance of the blood pressure effect over the 24-hour dosing interval was observed, with little difference in peak and trough effect. Tolerance was not demonstrated in patients studied for up to 1 year. The 3 parallel, fixed dose, dose response studies showed that the reduction in supine and standing blood pressures was dose-related within the recommended dosing range. Effects on diastolic pressure were similar in young and older patients. The effect on systolic pressure was greater in older patients, perhaps because of greater baseline systolic pressure. Effects were similar in black patients and in white patients.

#### **Pediatric Patients**

Two hundred sixty-eight hypertensive patients aged 6 to 17 years were randomized first to amlodipine 2.5 or 5 mg once daily for 4 weeks and then randomized again to the same dose or to placebo for another 4 weeks. Patients receiving 2.5 mg or 5 mg at the end of 8 weeks had significantly lower systolic blood pressure than those secondarily randomized to placebo. The magnitude of the treatment effect is difficult to interpret, but it is probably less than 5 mmHg systolic on the 5 mg dose and 3.3 mmHg systolic on the 2.5 mg dose. Adverse events were similar to those seen in adults.

### **14.2 Effects in Chronic Stable Angina**

The effectiveness of 5 to 10 mg/day of amlodipine in exercise-induced angina has been evaluated in 8 placebo-controlled, double-blind clinical trials of up to 6 weeks duration involving 1,038 patients (684 amlodipine, 354 placebo) with chronic stable angina. In 5 of the 8 studies, significant increases in exercise time (bicycle or treadmill) were seen with the 10 mg dose. Increases in symptom-limited

exercise time averaged 12.8% (63 sec) for amlodipine 10 mg, and averaged 7.9% (38 sec) for amlodipine 5 mg. Amlodipine 10 mg also increased time to 1 mm ST segment deviation in several studies and decreased angina attack rate. The sustained efficacy of amlodipine in angina patients has been demonstrated over long-term dosing. In patients with angina, there were no clinically significant reductions in blood pressures (4/1 mmHg) or changes in heart rate (+0.3 bpm).

### **14.3 Effects in Vasospastic Angina**

In a double-blind, placebo-controlled clinical trial of 4 weeks duration in 50 patients, amlodipine therapy decreased attacks by approximately 4/week compared with a placebo decrease of approximately 1/week ( $p \leq 0.01$ ). Two of 23 amlodipine and 7 of 27 placebo patients discontinued from the study due to lack of clinical improvement.

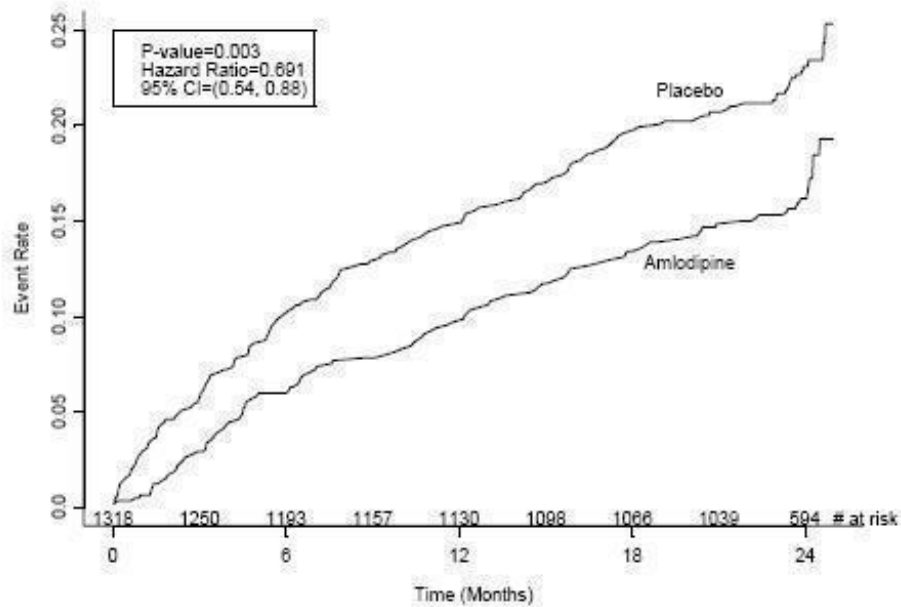
### **14.4 Effects in Documented Coronary Artery Disease**

In PREVENT, 825 patients with angiographically documented coronary artery disease were randomized to amlodipine (5 to 10 mg once daily) or placebo and followed for 3 years. Although the study did not show significance on the primary objective of change in coronary luminal diameter as assessed by quantitative coronary angiography, the data suggested a favorable outcome with respect to fewer hospitalizations for angina and revascularization procedures in patients with CAD.

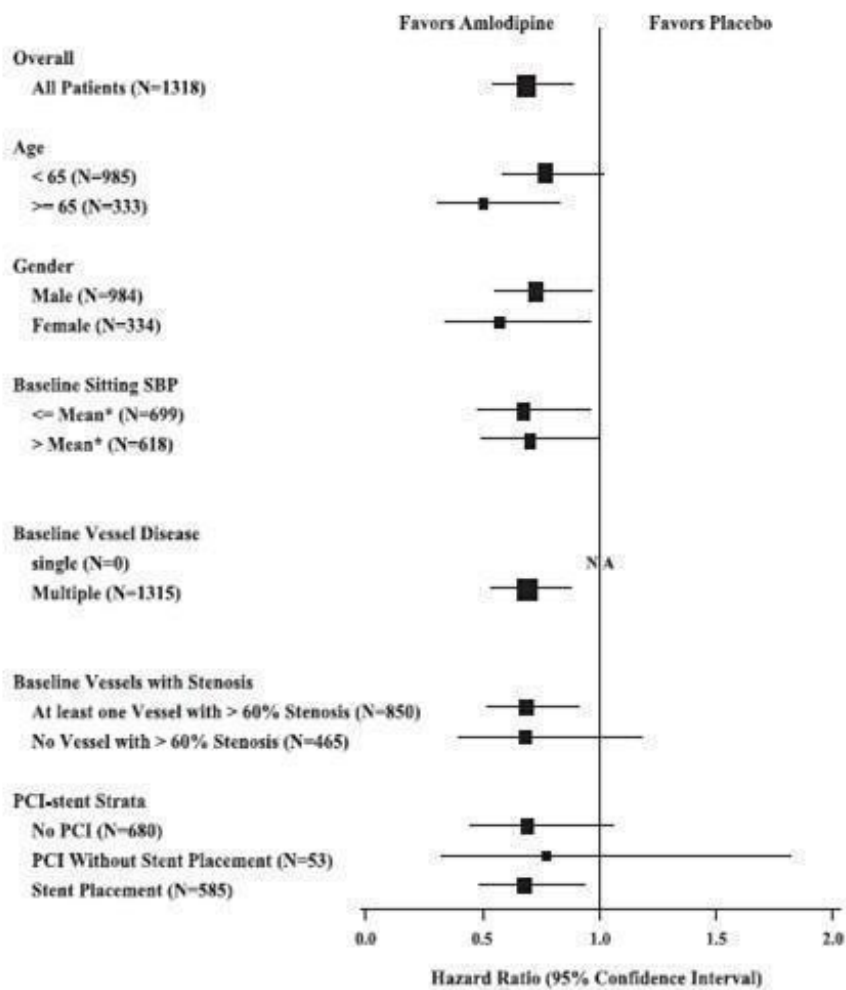
CAMELOT enrolled 1,318 patients with CAD recently documented by angiography, without left main coronary disease and without heart failure or an ejection fraction  $< 40\%$ . Patients (76% males, 89% Caucasian, 93% enrolled at U.S. sites, 89% with a history of angina, 52% without PCI, 4% with PCI and no stent, and 44% with a stent) were randomized to double-blind treatment with either amlodipine (5 to 10 mg once daily) or placebo in addition to standard care that included aspirin (89%), statins (83%), beta-blockers (74%), nitroglycerin (50%), anti-coagulants (40%), and diuretics (32%), but excluded other calcium channel blockers. The mean duration of follow-up was 19 months. The primary endpoint was the time to first occurrence of one of the following events: hospitalization for angina pectoris, coronary revascularization, myocardial infarction, cardiovascular death, resuscitated cardiac arrest, hospitalization for heart failure, stroke/TIA, or peripheral vascular disease. A total of 110 (16.6%) and 151 (23.1%) first events occurred in the amlodipine and placebo groups, respectively, for a hazard ratio of 0.691 (95% CI: 0.540–0.884,  $p = 0.003$ ). The primary endpoint is summarized in Figure 1 below. The outcome of this study was largely derived from the prevention of hospitalizations for angina and the prevention of revascularization procedures (see Table 1). Effects in various subgroups are shown in Figure 2.

In an angiographic substudy ( $n=274$ ) conducted within CAMELOT, there was no significant difference between amlodipine and placebo on the change of atheroma volume in the coronary artery as assessed by intravascular ultrasound.

### **Figure 1 - Kaplan-Meier Analysis of Composite Clinical Outcomes for Amlodipine versus Placebo**



**Figure 2 – Effects on Primary Endpoint of Amlodipine versus Placebo across Sub-Groups**



\*The mean sitting baseline SBP is 129 mmHg

Table 1 below summarizes the significant composite endpoint and clinical outcomes from the composites of the primary endpoint. The other components of the primary endpoint including cardiovascular death, resuscitated cardiac arrest, myocardial infarction, hospitalization for heart failure, stroke/TIA, or peripheral vascular disease did not demonstrate a significant difference between amlodipine and placebo.

**Table 1. Incidence of Significant Clinical Outcomes for CAMELOT**

<b>Clinical Outcomes N (%)</b>	<b>Amlodipine (N=663)</b>	<b>Placebo (N=655)</b>	<b>Risk Reduction (p-value)</b>
<b>Composite CV Endpoint</b>	<b>110 (16.6)</b>	<b>151 (23.1)</b>	<b>31% (0.003)</b>
Hospitalization for Angina Total patients with these events*	51 (7.7)	84 (12.8)	42% (0.002)
Coronary Revascularization*	78 (11.8)	103 (15.7)	27% (0.033)

\* Total patients with these events

#### **14.5 Studies in Patients with Heart Failure**

Amlodipine has been compared to placebo in four 8 to 12 week studies of patients with NYHA Class II/III heart failure, involving a total of 697 patients. In these studies, there was no evidence of worsened heart failure based on measures of exercise tolerance, NYHA classification, symptoms, or left ventricular ejection fraction. In a long-term (follow-up at least 6 months, mean 13.8 months) placebo-controlled mortality/morbidity study of amlodipine 5 to 10 mg in 1,153 patients with NYHA Classes III (n=931) or IV (n=222) heart failure on stable doses of diuretics, digoxin, and ACE inhibitors, amlodipine had no effect on the primary endpoint of the study which was the combined endpoint of all-cause mortality and cardiac morbidity (as defined by life-threatening arrhythmia, acute myocardial infarction, or hospitalization for worsened heart failure), or on NYHA classification, or symptoms of heart failure. Total combined all-cause mortality and cardiac morbidity events were 222/571 (39%) for patients on amlodipine and 246/583 (42%) for patients on placebo; the cardiac morbid events represented about 25% of the endpoints in the study.

Another study (PRAISE-2) randomized patients with NYHA Class III (80%) or IV (20%) heart failure without clinical symptoms or objective evidence of underlying ischemic disease, on stable doses of ACE inhibitors (99%), digitalis (99%), and diuretics (99%), to placebo (n=827) or amlodipine (n=827) and followed them for a mean of 33 months. There was no statistically significant difference between amlodipine and placebo in the primary endpoint of all-cause mortality (95% confidence limits from 8% reduction to 29% increase on amlodipine). With amlodipine there were more reports of pulmonary edema.

## **16 HOW SUPPLIED/STORAGE AND HANDLING**

### **2.5 mg Tablets**

Amlodipine Besylate Tablets USP, 2.5 mg (amlodipine besylate USP equivalent to 2.5 mg of amlodipine per tablet) are supplied as white, round, flat face beveled edge tablets debossed "V" on one side and "20" on the other side and supplied as follows

NDC 69150-113-90 Bottle of 90

NDC 69150-113-03 Bottle of 300  
NDC 69150-113-05 Bottle of 500  
NDC 69150-113-10 Bottle of 1000

### **5 mg Tablets**

Amlodipine Besylate Tablets USP, 5 mg (amlodipine besylate USP equivalent to 5 mg of amlodipine per tablet) are supplied as white, round, flat face beveled edge tablets debossed “V” on one side and “21” on the other side and supplied as follows:

NDC 69150-114-90 Bottle of 90  
NDC 69150-114-03 Bottle of 300  
NDC 69150-114-05 Bottle of 500  
NDC 69150-114-10 Bottle of 1000

### **10 mg Tablets**

Amlodipine Besylate Tablets USP, 10 mg (amlodipine besylate USP equivalent to 10 mg of amlodipine per tablet) are supplied as white, round, flat face beveled edge tablets debossed “22” on one side and plain on the other side and supplied as follows:

NDC 69150-115-90 Bottle of 90  
NDC 69150-115-03 Bottle of 300  
NDC 69150-115-05 Bottle of 500  
NDC 69150-115-10 Bottle of 1000

### **Storage**

Store at 20° to 25°C (68° to 77°F) [See USP Controlled Room Temperature] and dispense in tight, light-resistant containers (USP).

### **Manufactured for and Distributed By:**

Biomes Pharmaceuticals USA,  
2350 Port Lansing Road, Suite 1  
Lansing MI 48906, USA.

## **PATIENT INFORMATION LEAFLET Amlodipine Besylate Tablets, USP**

### **Rx Only**

Read this information carefully before you start taking amlodipine besylate tablets and each time you refill your prescription. There may be new information. This information does not replace talking with your doctor. If you have any questions about amlodipine besylate tablets, ask your doctor. Your doctor will know if amlodipine besylate tablets are right for you.

### **What is amlodipine besylate tablets?**

Amlodipine is a type of medicine known as a calcium channel blocker (CCB). It is used to treat high blood pressure (hypertension) and a type of chest pain called angina. It can be used by itself or with other medicines to treat these conditions.

### **High Blood Pressure (hypertension)**

High blood pressure comes from blood pushing too hard against your blood vessels. Amlodipine relaxes your blood vessels, which lets your blood flow more easily and helps lower your blood pressure. Drugs that lower blood pressure lower your risk of having a stroke or



heart attack.

## **Angina**

Angina is a pain or discomfort that keeps coming back when part of your heart does not get enough blood. Angina feels like a pressing or squeezing pain, usually in your chest under the breastbone. Sometimes you can feel it in your shoulders, arms, neck, jaws, or back. Amlodipine can relieve this pain.

### **Who should not use amlodipine besylate tablets?**

Do not use amlodipine besylate tablets if you are allergic to amlodipine (the active ingredient in amlodipine besylate tablets), or to the inactive ingredients. Your doctor or pharmacist can give you a list of these ingredients.

### **What should I tell my doctor before taking amlodipine besylate tablets?**

Tell your doctor about any prescription and non-prescription medicines you are taking, including natural or herbal remedies. Tell your doctor if you:

- ever had heart disease
- ever had liver problems
- are pregnant, or plan to become pregnant. Your doctor will decide if amlodipine besylate tablets is the best treatment for you.
- are breastfeeding. Do not breastfeed while taking amlodipine besylate tablets. You can stop breastfeeding or take a different medicine.

### **How should I take amlodipine besylate tablets?**

- Take amlodipine besylate tablets once a day, with or without food.
- It may be easier to take your dose if you do it at the same time every day, such as with breakfast or dinner, or at bed time. Do not take more than one dose of amlodipine besylate tablets at a time.
- If you miss a dose, take it as soon as you remember. Do not take amlodipine besylate tablets if it has been more than 12 hours since you missed your last dose. Wait and take the next dose at your regular time.
- Other medicines: You can use nitroglycerin and amlodipine besylate tablets together. If you take nitroglycerin for angina, don't stop taking it while you are taking amlodipine besylate tablets.
- While you are taking amlodipine besylate tablets, do not stop taking your other prescription medicines, including any other blood pressure medicines, without talking to your doctor.
- If you took too much amlodipine besylate tablets, call your doctor or Poison Control Center, or go to the nearest hospital emergency room right away.

### **What should I avoid while taking amlodipine besylate tablets?**

- **Do not** breastfeed. It is not known if amlodipine besylate will pass through your milk.
- **Do not** start any new prescription or non-prescription medicines or supplements, unless you check with your doctor first.

### **What are the possible side effects of amlodipine besylate tablets?**

Amlodipine besylate tablets may cause the following side effects. Most side effects are mild or moderate:

- swelling of your legs or ankles
- tiredness, extreme sleepiness
- stomach pain, nausea
- dizziness
- flushing (hot or warm feeling in your face)
- arrhythmia (irregular heartbeat)
- heart palpitations (very fast heartbeat)
- muscle rigidity, tremor and/or abnormal muscle movement

It is rare, but when you first start taking amlodipine besylate tablets or increase your dose, you may have

a heart attack or your angina may get worse. If that happens, call your doctor right away or go directly to a hospital emergency room.

Tell your doctor if you are concerned about any side effects you experience. These are not all the possible side effects of amlodipine. For a complete list, ask your doctor or pharmacist.

**How do I store amlodipine besylate tablets ?**

Keep amlodipine besylate tablets away from children. Store at 20°-25°C (68°-77°F) [See USP Controlled Room Temperature]. Keep amlodipine besylate tablets out of the light. Do not store in the bathroom. Keep amlodipine besylate tablets in a dry place.

**General advice about amlodipine besylate tablets**

Sometimes, doctors will prescribe a medicine for a condition that is not written in the patient information leaflets. Only use amlodipine besylate tablets the way your doctor told you to. Do not give amlodipine besylate tablets to other people, even if they have the same symptoms you have. It may harm them.

You can ask your pharmacist or doctor for information about amlodipine besylate tablets, or you can call Biomes USA at 877-300-0233

Manufactured By :

China Resources Saike Pharmaceutical Co., Ltd.

No. 3, Jinghai 7th Street, Tongzhou District, Beijing, China

**Manufactured for and distributed by:**

**Biomes Pharmaceuticals LLC**

**2350 Port Lansing Road Suite 1**

**Lansing, MI 48906**

(PIL 72000086-00; Revised:04/2015)

72000085-00

**PRINCIPAL DISPLAY PANEL - 2.5 mg - 90 Tablets Bottle**

**NDC 69150-113-90**

**Amlodipine Besylate**

Tablets, USP

2.5 mg

Rx only

90 count

**BIOMES**

Rev. 06/2018



NDC 69150-113-90

# Amlodipine Besylate Tablets, USP

**2.5 mg\***

PHARMACIST: Dispense with Patient Information Leaflet.

Rx Only

90 Tablets

\*Each tablet contains: Amlodipine besylate USP equivalent to 2.5 mg amlodipine.

**Dosage and use:** See accompanying prescribing information.

**Store at 20° to 25° C (68° to 77° F); excursions permitted to 15° to 30°C (59° to 86°F) [See USP Controlled Room Temperature].**

PROTECT FROM LIGHT.

Dispense in tight, light-resistant containers as defined in the USP.

M.L. No.: TN00002326

**Manufactured by :**  
Vivimed Life Sciences Private Limited,  
Plot No. 101, 102, 107 & 108,  
SIDCO Pharmaceutical Complex, Alathur,  
Kanchipuram – 603 110, Tamilnadu, India.

**Manufactured for :**  
Biomes Pharmaceuticals LLC,  
2350 Port Lansing Road Suite 1 & 2,  
Lansing, MI 48906.

72000408-00  
Rev. 06/2018



## PRINCIPAL DISPLAY PANEL - 5 mg - 90 Tablets Bottle

NDC 69150-114-90

### Amlodipine Besylate Tablets, USP

5 mg

Rx only

90 count

**BIOMES**

Rev. 06/2018



NDC 69150-114-90

### Amlodipine Besylate Tablets, USP

**5 mg\***

PHARMACIST: Dispense with Patient Information Leaflet.

Rx Only

90 Tablets

\*Each tablet contains: Amlodipine besylate USP equivalent to 5 mg amlodipine.

**Dosage and use:** See accompanying prescribing information.

**Store at 20° to 25° C (68° to 77° F); excursions permitted to 15° to 30°C (59° to 86°F) [See USP Controlled Room Temperature].**

PROTECT FROM LIGHT.

Dispense in tight, light-resistant containers as defined in the USP.

M.L. No.: TN00002326

**Manufactured by :**  
Vivimed Life Sciences Private Limited,  
Plot No. 101, 102, 107 & 108,  
SIDCO Pharmaceutical Complex, Alathur,  
Kanchipuram – 603 110, Tamilnadu, India.

**Manufactured for :**  
Biomes Pharmaceuticals LLC,  
2350 Port Lansing Road Suite 1 & 2,  
Lansing, MI 48906.

72000412-00  
Rev. 06/2018



## PRINCIPAL DISPLAY PANEL - 10 mg - 90 Tablets Bottle

NDC 69150-115-90

### Amlodipine Besylate Tablets, USP

10 mg

Rx only

90 count

**BIOMES**

Rev. 06/2018

**BIOMES™**  
A Division of Vivimed Life Sciences Private Limited  
NDC 69150-115-90

**Amlodipine Besylate Tablets, USP**

**10 mg\***

PHARMACIST: Dispense with Patient Information Leaflet.

Rx Only 90 Tablets

\*Each tablet contains: Amlodipine besylate USP equivalent to 10 mg amlodipine.  
Dosage and use: See accompanying prescribing information.  
Store at 20° to 25° C (68° to 77° F); excursions permitted to 15° to 30° C (59° to 86° F) (See USP Controlled Room Temperature).  
PROTECT FROM LIGHT  
Dispense in tight, light-resistant containers as defined in the USP.  
M.L. No.: TM0002326

Manufactured by :  
Vivimed Life Sciences Private Limited,  
Plot No. 101, 102, 107 & 108,  
SIDCO Pharmaceutical Complex, Alathur,  
Kanchipuram - 603 110, Tamilnadu, India.

Manufactured for:  
Biomes Pharmaceuticals LLC,  
2350 Port Lansing Road Suite 1 & 2,  
Lansing, MI 48906.

72000416-00  
Rev. 05/21/18

## AMLODIPINE BESYLATE

amlodipine besylate tablet

### Product Information

Product Type	HUMAN PRESCRIPTION DRUG	Item Code (Source)	NDC:69150-113
Route of Administration	ORAL		

### Active Ingredient/Active Moiety

Ingredient Name	Basis of Strength	Strength
Amlodipine Besylate (UNII: 864V2Q084H) (Amlodipine - UNII:1J444QC288)	Amlodipine	2.5 mg

### Inactive Ingredients

Ingredient Name	Strength
ANHYDRO US DIBASIC CALCIUM PHOSPHATE (UNII: L11K75P92J)	
CELLULOSE, MICROCRYSTALLINE (UNII: OP1R32D61U)	
sodium starch glycolate type A potato (UNII: 5856J3G2A2)	
SILICON DIOXIDE (UNII: ETJ7Z6XBU4)	
STEARIC ACID (UNII: 4ELV7Z65AP)	
magnesium stearate (UNII: 70097M61B0)	

### Product Characteristics

Color	white	Score	no score
Shape	ROUND	Size	6mm
Flavor		Imprint Code	v;20
Contains			

### Packaging

#	Item Code	Package Description	Marketing Start Date	Marketing End Date
1	NDC:69150-113-01	100 in 1 BOTTLE; Type 0: Not a Combination Product	04/15/2011	04/01/2018
2	NDC:69150-113-90	90 in 1 BOTTLE; Type 0: Not a Combination Product	07/25/2018	
3	NDC:69150-113-03	300 in 1 BOTTLE; Type 0: Not a Combination Product	07/25/2018	
4	NDC:69150-113-05	500 in 1 BOTTLE; Type 0: Not a Combination Product	07/25/2018	

5	NDC:69150-113-10	1000 in 1 BOTTLE; Type 0: Not a Combination Product	07/25/2018	
<b>Marketing Information</b>				
<b>Marketing Category</b>	<b>Application Number or Monograph Citation</b>	<b>Marketing Start Date</b>	<b>Marketing End Date</b>	
ANDA	ANDA077516	04/15/2011		

**AMLODIPINE BESYLATE**  
amlodipine besylate tablet

<b>Product Information</b>			
<b>Product Type</b>	HUMAN PRESCRIPTION DRUG	<b>Item Code (Source)</b>	NDC:69150-114
<b>Route of Administration</b>	ORAL		

<b>Active Ingredient/Active Moiety</b>		
<b>Ingredient Name</b>	<b>Basis of Strength</b>	<b>Strength</b>
Amlodipine Besylate (UNII: 864V2Q084H) (Amlodipine - UNII:1J444QC288)	Amlodipine	5 mg

<b>Inactive Ingredients</b>	
<b>Ingredient Name</b>	<b>Strength</b>
ANHYDROUS DIBASIC CALCIUM PHOSPHATE (UNII: L11K75P92J)	
CELLULOSE, MICROCRYSTALLINE (UNII: OP1R32D61U)	
sodium starch glycolate type A potato (UNII: 5856J3G2A2)	
SILICON DIOXIDE (UNII: ETJ7Z6XBU4)	
STEARIC ACID (UNII: 4ELV7Z65AP)	
magnesium stearate (UNII: 70097M61B0)	

<b>Product Characteristics</b>			
<b>Color</b>	white	<b>Score</b>	no score
<b>Shape</b>	ROUND	<b>Size</b>	8mm
<b>Flavor</b>		<b>Imprint Code</b>	v;21
<b>Contains</b>			

<b>Packaging</b>				
<b>#</b>	<b>Item Code</b>	<b>Package Description</b>	<b>Marketing Start Date</b>	<b>Marketing End Date</b>
1	NDC:69150-114-01	100 in 1 BOTTLE; Type 0: Not a Combination Product	04/15/2011	04/01/2018
2	NDC:69150-114-90	90 in 1 BOTTLE; Type 0: Not a Combination Product	07/25/2018	
3	NDC:69150-114-03	300 in 1 BOTTLE; Type 0: Not a Combination Product	07/25/2018	
4	NDC:69150-114-05	500 in 1 BOTTLE; Type 0: Not a Combination Product	07/25/2018	
5	NDC:69150-114-10	1000 in 1 BOTTLE; Type 0: Not a Combination Product	07/25/2018	

## Marketing Information

Marketing Category	Application Number or Monograph Citation	Marketing Start Date	Marketing End Date
ANDA	ANDA077516	04/15/2011	

## AMLODIPINE BESYLATE

amlodipine besylate tablet

### Product Information

Product Type	HUMAN PRESCRIPTION DRUG	Item Code (Source)	NDC:69150-115
Route of Administration	ORAL		

### Active Ingredient/Active Moiety

Ingredient Name	Basis of Strength	Strength
<b>Amlodipine Besylate</b> (UNII: 864V2Q084H) (Amlodipine - UNII:1J444QC288)	Amlodipine	10 mg

### Inactive Ingredients

Ingredient Name	Strength
<b>ANHYDROUS DIBASIC CALCIUM PHOSPHATE</b> (UNII: L11K75P92J)	
<b>CELLULOSE, MICROCRYSTALLINE</b> (UNII: OP1R32D61U)	
<b>sodium starch glycolate type A potato</b> (UNII: 5856J3G2A2)	
<b>SILICON DIOXIDE</b> (UNII: ETJ7Z6XBU4)	
<b>STEARIC ACID</b> (UNII: 4ELV7Z65AP)	
<b>magnesium stearate</b> (UNII: 70097M6I30)	

### Product Characteristics

Color	white	Score	no score
Shape	ROUND	Size	10mm
Flavor		Imprint Code	v;22
Contains			

### Packaging

#	Item Code	Package Description	Marketing Start Date	Marketing End Date
1	NDC:69150-115-01	100 in 1 BOTTLE; Type 0: Not a Combination Product	04/15/2011	04/01/2018
2	NDC:69150-115-90	90 in 1 BOTTLE; Type 0: Not a Combination Product	07/25/2018	
3	NDC:69150-115-03	300 in 1 BOTTLE; Type 0: Not a Combination Product	07/25/2018	
4	NDC:69150-115-05	500 in 1 BOTTLE; Type 0: Not a Combination Product	07/25/2018	
5	NDC:69150-115-10	1000 in 1 BOTTLE; Type 0: Not a Combination Product	07/25/2018	

## Marketing Information

Marketing Category	Application Number or Monograph Citation	Marketing Start Date	Marketing End Date
--------------------	--	----------------------	--------------------

ANDA	ANDA077516	04/15/2011	
------	------------	------------	--

**Labeler** - BIOMES PHARMACEUTICALS LLC (078644310)

**Registrant** - BIOMES PHARMACEUTICALS LLC (078644310)

Revised: 1/2021

BIOMES PHARMACEUTICALS LLC