

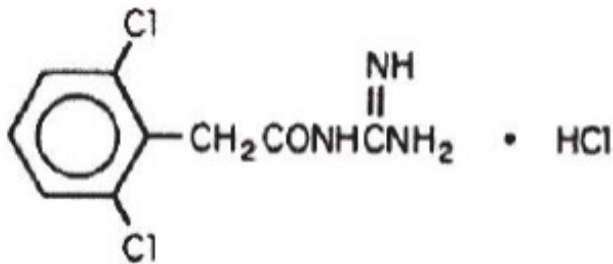
GUANFACINE - guanfacine tablet
Ajanta Pharma USA Inc.

Guanfacine Tablets, USP
Rx only

DESCRIPTION

Guanfacine hydrochloride, USP is a centrally acting antihypertensive with α_2 -adrenoceptor agonist properties in tablet form for oral administration.

The chemical name of guanfacine hydrochloride, USP is *N*-Amidino- 2-(2,6-dichlorophenyl) acetamide monohydrochloride and its molecular weight is 282.55. Its structural formula is:



Guanfacine hydrochloride, USP is a white to off-white powder; sparingly soluble in water and alcohol and very slightly soluble in acetone. The tablets contain the following inactive ingredients:

1 mg—Anhydrous citric acid, microcrystalline cellulose, pregelatinized starch, stearic acid.

2 mg—Anhydrous citric acid, microcrystalline cellulose, pregelatinized starch, stearic acid.

FDA approved dissolution test specifications differ from USP.

CLINICAL PHARMACOLOGY

Guanfacine hydrochloride is an orally active antihypertensive agent whose principal mechanism of action appears to be stimulation of central α_2 -adrenergic receptors. By stimulating these receptors, guanfacine reduces sympathetic nerve impulses from the vasomotor center to the heart and blood vessels. This results in a decrease in peripheral vascular resistance and a reduction in heart rate.

The dose-response relationship for blood pressure and adverse effects of guanfacine given once a day as monotherapy has been evaluated in patients with mild to moderate hypertension. In this study patients were randomized to placebo or to 0.5 mg, 1 mg, 2 mg, 3 mg, or 5 mg of guanfacine tablets. Results are shown in the following table. A

useful effect was not observed overall until doses of 2 mg were reached, although responses in white patients were seen at 1 mg; 24 hour effectiveness of 1 mg to 3 mg doses was documented using 24 hour ambulatory monitoring. While the 5 mg dose added an increment of effectiveness, it caused an unacceptable increase in adverse reactions.

Mean Changes (mm Hg) from Baseline in Seated Systolic and Diastolic Blood Pressure for Patients Completing 4 Weeks to 8 Weeks of Treatment with Guanfacine Monotherapy

Mean change S/D* Seated	n = (range)	Placebo	0.5 mg	1 mg	2 mg	3 mg	5 mg
White Patients	11 to 30	-1/-5	-6/-8	-8/-9	-12/-11	-15/-12	-18/-16
Black Patients	8 to 28	-3/-5	0/-2	-3/-5	-7/-7	-8/-9	-19/-15

* S/D = Systolic/diastolic blood pressure

Controlled clinical trials in patients with mild to moderate hypertension who were receiving a thiazide-type diuretic have defined the dose-response relationship for blood pressure response and adverse reactions of guanfacine given at bedtime and have shown that the blood pressure response to guanfacine can persist for 24 hours after a single dose. In the 12-week placebo-controlled dose-response study, patients were randomized to placebo or to doses of 0.5 mg, 1 mg, 2 mg, and 3 mg of guanfacine, in addition to 25 mg chlorthalidone, each given at bedtime. The observed mean changes from baseline, tabulated below, indicate the similarity of response for placebo and the 0.5 mg dose. Doses of 1 mg, 2 mg, and 3 mg resulted in decreased blood pressure in the sitting position with no real differences among the three doses. In the standing position, there was some increase in response with dose.

Mean Decreases (mm Hg) in Seated and Standing Blood Pressure for Patients Treated with Guanfacine in Combination with Chlorthalidone

Mean Change	n =	Placebo 63	0.5 mg 63	1 mg 64	2 mg 58	3 mg 59
SD* Seated		-5/-7	-5/-6	-14/-13	-12/-13	-16/-13
SD Standing		-3/-5	-5/-4	-11/-9	-9/-10	-15/-12

* S/D = Systolic/diastolic blood pressure

While most of the effectiveness of guanfacine in combination (and as monotherapy in white patients) was present at 1 mg, adverse reactions at this dose were not clearly distinguishable from those associated with placebo. Adverse reactions were clearly present at 2 mg and 3 mg (see **ADVERSE REACTIONS**).

In a second 12-week placebo-controlled study of 1 mg, 2 mg or 3 mg of guanfacine

hydrochloride administered with 25 mg of chlorthalidone once daily, a significant decrease in blood pressure was maintained for a full 24 hours after dosing. While there was no significant difference between the 12 hour and 24 hour blood pressure readings, the fall in blood pressure at 24 hours was numerically smaller, suggesting possible escape of blood pressure in some patients and the need for individualization of therapy.

In a double-blind, randomized trial, either guanfacine or clonidine was given at recommended doses with 25 mg chlorthalidone for 24 weeks and then abruptly discontinued. Results showed equal degrees of blood pressure reduction with the two drugs and there was no tendency for blood pressures to increase despite maintenance of the same daily dose of the two drugs. Signs and symptoms of rebound phenomena were infrequent upon discontinuation of either drug. Abrupt withdrawal of clonidine produced a rapid return of diastolic and especially systolic blood pressure to approximately pretreatment levels, with occasional values significantly greater than baseline, whereas guanfacine withdrawal produced a more gradual increase to pretreatment levels, but also with occasional values significantly greater than baseline.

Pharmacodynamics

Hemodynamic studies in man showed that the decrease in blood pressure observed after single-dose or long-term oral treatment with guanfacine was accompanied by a significant decrease in peripheral resistance and a slight reduction in heart rate (5 beats/min). Cardiac output under conditions of rest or exercise was not altered by guanfacine.

Guanfacine hydrochloride lowered elevated plasma renin activity and plasma catecholamine levels in hypertensive patients, but this does not correlate with individual blood-pressure responses.

Growth hormone secretion was stimulated with single oral doses of 2 mg and 4 mg of guanfacine. Long-term use of guanfacine tablets had no effect on growth hormone levels.

Guanfacine had no effect on plasma aldosterone. A slight but insignificant decrease in plasma volume occurred after one month of guanfacine therapy. There were no changes in mean body weight or electrolytes.

Pharmacokinetics

Relative to an intravenous dose of 3 mg, the absolute oral bioavailability of guanfacine is about 80 %. Peak plasma concentrations occur from 1 hour to 4 hours with an average of 2.6 hours after single oral doses or at steady state.

The area under the concentration-time curve (AUC) increases linearly with the dose.

In individuals with normal renal function, the average elimination half-life is approximately 17 hours (range 10 hours to 30 hours). Younger patients tend to have shorter elimination half-lives (13 hours to 14 hours) while older patients tend to have half-lives at the upper end of the range. Steady state blood levels were attained within 4 days in most subjects.

In individuals with normal renal function, guanfacine and its metabolites are excreted primarily in the urine. Approximately 50 % (40 % to 75 %) of the dose is eliminated in the urine as unchanged drug; the remainder is eliminated mostly as conjugates of metabolites produced by oxidative metabolism of the aromatic ring.

The guanfacine-to-creatinine clearance ratio is greater than 1.0, which would suggest that tubular secretion of drug occurs.

The drug is approximately 70 % bound to plasma proteins, independent of drug concentration.

The whole body volume of distribution is high (a mean of 6.3 L/kg), which suggests a high distribution of drug to the tissues.

The clearance of guanfacine in patients with varying degrees of renal insufficiency is reduced, but plasma levels of drug are only slightly increased compared to patients with normal renal function. When prescribing for patients with renal impairment, the low end of the dosing range should be used. Patients on dialysis also can be given usual doses of guanfacine hydrochloride as the drug is poorly dialyzed.

INDICATIONS AND USAGE

Guanfacine tablets, USP are indicated in the management of hypertension. Guanfacine tablets, USP may be given alone or in combination with other antihypertensive agents, especially thiazide-type diuretics.

CONTRAINDICATIONS

Guanfacine tablets are contraindicated in patients with known hypersensitivity to guanfacine hydrochloride.

PRECAUTIONS

General

Like other antihypertensive agents, guanfacine hydrochloride should be used with caution in patients with severe coronary insufficiency, recent myocardial infarction, cerebrovascular disease, or chronic renal or hepatic failure.

Sedation

Guanfacine tablets, like other orally active central α_2 -adrenergic agonists, causes sedation or drowsiness, especially when beginning therapy. These symptoms are dose-related (see **ADVERSE REACTIONS**). When guanfacine tablets are used with other centrally active depressants (such as phenothiazines, barbiturates, or benzodiazepines), the potential for additive sedative effects should be considered.

Rebound

Abrupt cessation of therapy with orally active central α_2 -adrenergic agonists may be associated with increases (from depressed on-therapy levels) in plasma and urinary catecholamines, symptoms of "nervousness and anxiety" and, less commonly, increases in blood pressure to levels significantly greater than those prior to therapy.

Information for Patients

Patients who receive guanfacine tablets should be advised to exercise caution when operating dangerous machinery or driving motor vehicles until it is determined that they do not become drowsy or dizzy from the medication. Patients should be warned that

their tolerance for alcohol and other CNS depressants may be diminished. Patients should be advised not to discontinue therapy abruptly.

Laboratory Tests

In clinical trials, no clinically relevant laboratory test abnormalities were identified as causally related to drug during short-term treatment with guanfacine hydrochloride.

Drug Interactions

The potential for increased sedation when guanfacine tablets are given with other CNS-depressant drugs should be appreciated.

The administration of guanfacine concomitantly with a known microsomal enzyme inducer (phenobarbital or phenytoin) to two patients with renal impairment reportedly resulted in significant reductions in elimination half-life and plasma concentration. In such cases, therefore, more frequent dosing may be required to achieve or maintain the desired hypotensive response. Further, if guanfacine is to be discontinued in such patients, careful tapering of the dosage may be necessary in order to avoid rebound phenomena (see **Rebound** above).

Anticoagulants

Ten patients who were stabilized on oral anticoagulants were given guanfacine, 1 mg/day to 2 mg/day, for 4 weeks. No changes were observed in the degree of anticoagulation.

In several well-controlled studies, guanfacine was administered together with diuretics with no drug interactions reported. In the long-term safety studies, guanfacine tablets were given concomitantly with many drugs without evidence of any interactions. The principal drugs given (number of patients in parentheses) were: cardiac glycosides (115), sedatives and hypnotics (103), coronary vasodilators (52), oral hypoglycemics (45), cough and cold preparations (45), NSAIDs (38), antihyperlipidemics (29), antigout drugs (24), oral contraceptives (18), bronchodilators (13), insulin (10), and beta blockers (10).

Drug/Laboratory Test Interactions

No laboratory test abnormalities related to the use of guanfacine hydrochloride have been identified.

Carcinogenesis, Mutagenesis, Impairment of Fertility

No carcinogenic effect was observed in studies of 78 weeks in mice at doses more than 150 times the maximum recommended human dose and 102 weeks in rats at doses more than 100 times the maximum recommended human dose. In a variety of test models, guanfacine was not mutagenic.

No adverse effects were observed in fertility studies in male and female rats.

Pregnancy

Administration of guanfacine to rats at 70 times the maximum recommended human dose and to rabbits at 20 times the maximum recommended human dose resulted in no evidence of harm to the fetus. Higher doses (100 and 200 times the maximum recommended human dose in rabbits and rats respectively) were associated with reduced fetal survival and maternal toxicity. Rat experiments have shown that guanfacine crosses the placenta.

There are, however, no adequate and well-controlled studies in pregnant women. Because animal reproduction studies are not always predictive of human response, this drug should be used during pregnancy only if clearly needed.

Labor and Delivery

Guanfacine hydrochloride is not recommended in the treatment of acute hypertension associated with toxemia of pregnancy. There is no information available on the effects of guanfacine on the course of labor and delivery.

Nursing Mothers

It is not known whether guanfacine hydrochloride is excreted in human milk. Because many drugs are excreted in human milk, caution should be exercised when guanfacine tablets are administered to a nursing woman. Experiments with rats have shown that guanfacine is excreted in the milk.

Pediatric Use

Safety and effectiveness in children under 12 years of age have not been demonstrated. Therefore, the use of guanfacine tablets in this age group is not recommended. There have been spontaneous postmarketing reports of mania and aggressive behavioral changes in pediatric patients with attention-deficit hyperactivity disorder (ADHD) receiving guanfacine tablets. The reported cases were from a single center. All patients had medical or family risk factors for bipolar disorder. All patients recovered upon discontinuation of guanfacine hydrochloride. Hallucinations have been reported in pediatric patients receiving guanfacine tablets for treatment of attention-deficit hyperactivity disorder.

Geriatric Use

Clinical studies of guanfacine tablets did not include sufficient numbers of subjects aged 65 and over to determine whether they responded differently from younger subjects. Other reported clinical experience has not identified differences in responses between the elderly and younger patients.

In general, dose selection for an elderly patient should be cautious, usually starting at the low end of the dosing range, reflecting the greater frequency of decreased hepatic, renal or cardiac function, and of concomitant disease or other drug therapy (see **CLINICAL PHARMACOLOGY: Pharmacokinetics**).

ADVERSE REACTIONS

Adverse reactions noted with guanfacine hydrochloride are similar to those of other drugs of the central α_2 -adrenoreceptor agonist class: dry mouth, sedation (somnolence), weakness (asthenia), dizziness, constipation, and impotence. While the reactions are common, most are mild and tend to disappear on continued dosing.

Skin rash with exfoliation has been reported in a few cases; although clear cause and effect relationships to guanfacine tablets could not be established, should a rash occur, guanfacine tablets should be discontinued and the patient monitored appropriately.

In the dose-response monotherapy study described under **CLINICAL**

PHARMACOLOGY, the frequency of the most commonly observed adverse reactions showed a dose relationship from 0.5 mg to 3 mg as follows:

Adverse Reaction	Placebo n = 59	0.5 mg n = 60	1 mg n = 61	2 mg n = 60	3 mg n = 59
Dry Mouth	0 %	10 %	10 %	42 %	54 %
Somnolence	8 %	5 %	10 %	13 %	39 %
Asthenia	0 %	2 %	3 %	7 %	3 %
Dizziness	8 %	12 %	2 %	8 %	15 %
Headache	8 %	13 %	7 %	5 %	3 %
Impotence	0 %	0 %	0 %	7 %	3 %
Constipation	0 %	2 %	0 %	5 %	15 %
Fatigue	2 %	2 %	5 %	8 %	10 %

The percent of patients who dropped out because of adverse reactions are shown below for each dosage group.

	Placebo	0.5 mg	1 mg	2 mg	3 mg
Percent dropouts	0 %	2.0 %	5.0 %	13 %	32 %

The most common reasons for dropouts among patients who received guanfacine were dry mouth, somnolence, dizziness, fatigue, weakness, and constipation.

In the 12-week, placebo-controlled, dose-response study of guanfacine administered with 25 mg chlorthalidone at bedtime, the frequency of the most commonly observed adverse reactions showed a clear dose relationship from 0.5 mg to 3 mg as follows:

Adverse Reaction	Placebo n = 73	0.5 mg n = 72	1 mg n = 72	2 mg n = 72	3 mg n = 72
Dry Mouth	5 (7 %)	4 (5 %)	6 (8 %)	8 (11 %)	20 (28 %)
Somnolence	1 (1 %)	3 (4 %)	0 (0 %)	1 (1 %)	10 (14 %)
Asthenia	0 (0 %)	2 (3 %)	0 (0 %)	2 (2 %)	7 (10 %)

Dizziness	2 (2 %)	1 (1 %)	3 (4 %)	6 (8 %)	3 (4 %)
Headache	3 (4 %)	4 (3 %)	3 (4 %)	1 (1 %)	2 (2 %)
Impotence	1 (1 %)	1 (0 %)	0 (0 %)	1 (1 %)	3 (4 %)
Constipation	0 (0 %)	0 (0 %)	0 (0 %)	1 (1 %)	1 (1 %)
Fatigue	3 (3 %)	2 (3 %)	2 (3 %)	5 (6 %)	3 (4 %)

There were 41 premature terminations because of adverse reactions in this study. The percent of patients who dropped out and the dose at which the dropout occurred were as follows:

Dose	Placebo	0.5 mg	1 mg	2 mg	3 mg
Percent dropouts	6.9 %	4.2 %	3.2 %	6.9 %	8.3 %

Reasons for dropouts among patients who received guanfacine were: somnolence, headache, weakness, dry mouth, dizziness, impotence, insomnia, constipation, syncope, urinary incontinence, conjunctivitis, paresthesia, and dermatitis.

In a second 12-week placebo-controlled combination therapy study in which the dose could be adjusted upward to 3 mg per day in 1-mg increments at 3-week intervals, i.e., a setting more similar to ordinary clinical use, the most commonly recorded reactions were: dry mouth, 47 %; constipation, 16 %; fatigue, 12 %; somnolence, 10 %; asthenia, 6 %; dizziness, 6 %; headache, 4 %; and insomnia, 4 %.

Reasons for dropouts among patients who received guanfacine were: somnolence, dry mouth, dizziness, impotence, constipation, confusion, depression, and palpitations.

In the clonidine/guanfacine comparison described in **CLINICAL PHARMACOLOGY**, the most common adverse reactions noted were as follows:

Adverse Reactions	Guanfacine (n = 279)	Clonidine (n = 278)
Dry Mouth	30 %	37 %
Somnolence	21 %	35 %
Dizziness	11 %	8 %
Constipation	10 %	5 %
Fatigue	9 %	8 %

Headache	4 %	4 %
Insomnia	4 %	3 %

Adverse reactions occurring in 3 % or less of patients in the three controlled trials of guanfacine hydrochloride with a diuretic were:

Cardiovascular- bradycardia, palpitations, substernal pain

Gastrointestinal- abdominal pain, diarrhea, dyspepsia, dysphagia, nausea

CNS- amnesia, confusion, depression, insomnia, libido decrease

ENT disorders- rhinitis, taste perversion, tinnitus

Eye disorders- conjunctivitis, iritis, vision disturbance

Musculoskeletal- leg cramps, hypokinesia

Respiratory- dyspnea

Dermatologic- dermatitis, pruritus, purpura, sweating

Urogenital- testicular disorder, urinary incontinence

Other- malaise, paresthesia, paresis

Adverse reaction reports tend to decrease over time. In an open-label trial of one year's duration, 580 hypertensive subjects were given guanfacine, titrated to achieve goal blood pressure, alone (51 %), with diuretic (38 %), with beta blocker (3 %), with diuretic plus beta blocker (6 %), or with diuretic plus vasodilator (2 %). The mean daily dose of guanfacine reached was 4.7 mg.

Adverse Reaction	Incidence of adverse reactions at any time during the study n = 580	Incidence of adverse reactions at end of one year n = 580
Dry Mouth	60 %	15 %
Drowsiness	33 %	6 %
Dizziness	15 %	1 %
Constipation	14 %	3 %
Weakness	5 %	1 %
Headache	4 %	0.2 %
Insomnia	5 %	0 %

There were 52 (8.9 %) dropouts due to adverse effects in this 1-year trial. The causes were: dry mouth (n = 20), weakness (n = 12), constipation (n = 7), somnolence (n = 3), nausea (n = 3), orthostatic hypotension (n = 2), insomnia (n = 1), rash (n = 1), nightmares (n = 1), headache (n = 1), and depression (n = 1).

Postmarketing Experience

An open-label postmarketing study involving 21,718 patients was conducted to assess the safety of guanfacine hydrochloride 1 mg/day given at bedtime for 28 days. Guanfacine tablets were administered with or without other antihypertensive agents. Adverse events reported in the postmarketing study at an incidence greater than 1 % included dry mouth, dizziness, somnolence, fatigue, headache and nausea. The most commonly reported adverse events in this study were the same as those observed in controlled clinical trials.

Less frequent, possibly guanfacine tablets-related events observed in the postmarketing study and/or reported spontaneously include:

BODY AS A WHOLE asthenia, chest pain, edema, malaise, tremor

CARDIOVASCULAR bradycardia, palpitations, syncope, tachycardia

CENTRAL NERVOUS SYSTEM paresthesias, vertigo

EYE DISORDERS blurred vision

GASTROINTESTINAL SYSTEM abdominal pain, constipation, diarrhea, dyspepsia

LIVER AND BILIARY SYSTEM abnormal liver function tests

MUSCULO-SKELETAL SYSTEM arthralgia, leg cramps, leg pain, myalgia

PSYCHIATRIC agitation, anxiety, confusion, depression, insomnia, nervousness

REPRODUCTIVE SYSTEM, Male- impotence

RESPIRATORY SYSTEM dyspnea

SKIN AND APPENDAGES alopecia, dermatitis, exfoliative dermatitis, pruritus, rash

SPECIAL SENSES alterations in taste

URINARY SYSTEM nocturia, urinary frequency

Rare, serious disorders with no definitive cause and effect relationship to guanfacine tablets have been reported spontaneously and/or in the postmarketing study. These events include acute renal failure, cardiac fibrillation, cerebrovascular accident, congestive heart failure, heart block, and myocardial infarction.

DRUG ABUSE AND DEPENDENCE

No reported abuse or dependence has been associated with the administration of guanfacine hydrochloride.

OVERDOSAGE

Signs and Symptoms

Drowsiness, lethargy, bradycardia and hypotension have been observed following overdose with guanfacine.

A 25-year-old female intentionally ingested 60 mg. She presented with severe drowsiness and bradycardia of 45 beats/minute. Gastric lavage was performed and an infusion of isoproterenol (0.8 mg in 12 hours) was administered. She recovered quickly and without sequelae.

A 28-year-old female who ingested 30 mg to 40 mg developed only lethargy, was treated with activated charcoal and a cathartic, was monitored for 24 hours, and was discharged in good health.

A 2-year-old male weighing 12 kg who ingested up to 4 mg of guanfacine developed lethargy. Gastric lavage (followed by activated charcoal and sorbitol slurry via NG tube) removed some tablet fragments within 2 hours after ingestion, and vital signs were normal.

During 24-hour observation in ICU, systolic pressure was 58 and heart rate 70 at 16 hours post-ingestion. No intervention was required, and child was discharged fully recovered the next day.

Treatment of Overdosage

Gastric lavage and supportive therapy as appropriate. Guanfacine is not dialyzable in clinically significant amounts (2.4 %).

DOSAGE AND ADMINISTRATION

The recommended initial dose of guanfacine tablets when given alone or in combination with another antihypertensive drug is 1 mg daily given at bedtime to minimize somnolence. If after 3 weeks to 4 weeks of therapy 1 mg does not give a satisfactory result, a dose of 2 mg may be given, although most of the effect of guanfacine tablets are seen at 1 mg (see **CLINICAL PHARMACOLOGY**). Higher daily doses have been used, but adverse reactions increase significantly with doses above 3 mg/day.

The frequency of rebound hypertension is low, but it can occur. When rebound occurs, it does so after 2 days to 4 days, which is delayed compared with clonidine hydrochloride. This is consistent with the longer half-life of guanfacine. In most cases, after abrupt withdrawal of guanfacine, blood pressure returns to pretreatment levels slowly (within 2 days to 4 days) without ill effects.

HOW SUPPLIED

Guanfacine tablets, USP are available in the following dosing strengths (expressed in

equivalent amounts of guanfacine):

1 mg—White to off white, round, biconvex tablets, debossed with 'G1' on one side and plain on other side in bottles of 100 with child-resistant closure (NDC 27241-242-01).

2 mg—White to off white, oval, biconvex tablets, debossed with 'G2' on one side and plain on other side in bottles of 100 with child-resistant closure (NDC 27241-243-01).

Store at 20°C to 25°C (68°F to 77°F); excursions permitted to 15°C to 30°C (59°F to 86°F) [see USP Controlled Room Temperature].

Dispense in a tight, light-resistant container.

Marketed by:

Ajanta Pharma USA Inc.

Bridgewater, NJ 08807.

Made in India.

Revised: 09/2022

PACKAGE LABEL.PRINCIPAL DISPLAY PANEL

NDC 27241-242-01

100 Tablets

Guanfacine Tablets, USP

1 mg

Rx Only

ajanta

Each tablet contains guanfacine hydrochloride, USP equivalent to 1 mg guanfacine.

Usual Dosage: See package insert for complete product information.

This package is child-resistant.

Storage: Store at 20°C to 25°C (68°F to 77°F); excursions permitted to 15°C to 30°C (59°F to 86°F) [see USP Controlled Room Temperature].

Dispense in a tight, light-resistant container.

Keep out of reach of children.

Marketed by:
Ajanta Pharma USA Inc.
Bridgewater, NJ 08807.
Made in India.

Code No. : MH/DRUGS/AD/018
3028368

NDC 27241-242-01

100 Tablets

**Guanfacine
Tablets, USP**

1 mg

R_x Only

ajanta

Lot :

Exp :

**Unvarnish
OPZ Area
28 x 38 mm**



NDC 27241-243-01

100 Tablets

Guanfacine Tablets, USP

2 mg

Rx Only

ajanta

Each tablet contains guanfacine hydrochloride, USP equivalent to 2 mg guanfacine.

Usual Dosage: See package insert for complete product information.

This package is child-resistant.

Storage: Store at 20°C to 25°C (68°F to 77°F); excursions permitted to 15°C to 30°C (59°F to 86°F) [see USP Controlled Room Temperature].

Dispense in a tight, light-resistant container.

Keep out of reach of children.

Marketed by:
Ajanta Pharma USA Inc.
Bridgewater, NJ 08807.
Made in India.

Code No. : MH/DRUGS/AD/018
3028369

NDC 27241-243-01

100 Tablets

**Guanfacine
Tablets, USP**

2 mg

R_x Only

ajanta

Lot :

Exp :

**Unvarnish
OPZ Area
28 x 38 mm**



GUANFACINE

guanfacine tablet

Product Information				
Product Type	HUMAN PRESCRIPTION DRUG	Item Code (Source)	NDC:27241-242	
Route of Administration	ORAL			
Active Ingredient/Active Moiety				
Ingredient Name		Basis of Strength	Strength	
GUANFACINE HYDROCHLORIDE (UNII: PML56A160O) (GUANFACINE - UNII:300MY4G3MK)		GUANFACINE	1 mg	
Inactive Ingredients				
Ingredient Name			Strength	
ANHYDROUS CITRIC ACID (UNII: XF417D3PSL)				
MICROCRYSTALLINE CELLULOSE (UNII: OP1R32D61U)				
STARCH, CORN (UNII: O8232NY3SJ)				
STEARIC ACID (UNII: 4ELV7Z65AP)				
Product Characteristics				
Color	WHITE (white to off white)	Score	no score	
Shape	ROUND (biconvex)	Size	5mm	
Flavor		Imprint Code	G1	
Contains				
Packaging				
#	Item Code	Package Description	Marketing Start Date	Marketing End Date
1	NDC:27241-242-01	100 in 1 BOTTLE; Type 0: Not a Combination Product	04/27/2023	
Marketing Information				
Marketing Category	Application Number or Monograph Citation	Marketing Start Date	Marketing End Date	
ANDA	ANDA217293	04/27/2023		

GUANFACINE			
guanfacine tablet			
Product Information			
Product Type	HUMAN PRESCRIPTION DRUG	Item Code (Source)	NDC:27241-243
Route of Administration	ORAL		

Active Ingredient/Active Moiety

Ingredient Name	Basis of Strength	Strength
GUANFACINE HYDROCHLORIDE (UNII: PML56A1600) (GUANFACINE - UNII:300MY4G3MK)	GUANFACINE	2 mg

Inactive Ingredients

Ingredient Name	Strength
ANHYDROUS CITRIC ACID (UNII: XF417D3PSL)	
MICROCRYSTALLINE CELLULOSE (UNII: OP1R32D61U)	
STARCH, CORN (UNII: O8232NY3SJ)	
STEARIC ACID (UNII: 4ELV7Z65AP)	

Product Characteristics

Color	WHITE (white to off white)	Score	no score
Shape	OVAL (biconvex)	Size	10mm
Flavor		Imprint Code	G2
Contains			

Packaging

#	Item Code	Package Description	Marketing Start Date	Marketing End Date
1	NDC:27241-243-01	100 in 1 BOTTLE; Type 0: Not a Combination Product	04/27/2023	

Marketing Information

Marketing Category	Application Number or Monograph Citation	Marketing Start Date	Marketing End Date
ANDA	ANDA217293	04/27/2023	

Labeler - Ajanta Pharma USA Inc. (557554156)**Registrant** - Ajanta Pharma Limited (918594859)**Establishment**

Name	Address	ID/FEI	Business Operations
Ajanta Pharma Limited		918594859	MANUFACTURE(27241-242, 27241-243)

Revised: 9/2022

Ajanta Pharma USA Inc.