

**VICHY LABORATOIRES NORMADERM DAILY DEEP CLEANSING ACNE  
TREATMENT- salicylic acid gel  
COSMETIQUE ACTIVE PRODUCTION**

-----  
**Drug Facts**

**Active ingredient**

Salicylic acid...0.05%

**Purpose**

Acne treatment

**Uses**

- for the treatment of acne

**Warnings**

**For external use only**

**When using this product**

skin irritation and dryness is more likely to occur if you use another topical acne medication at the same time. if irritation occurs, only use one topical acne medication at a time.

**Keep out of reach of children.**

If swallowed, get medical help or contact a Poison Control Center right away.

**Directions**

- use twice daily
- wet face, then work product into a lather
- massage onto face, avoiding eyes
- rinse well

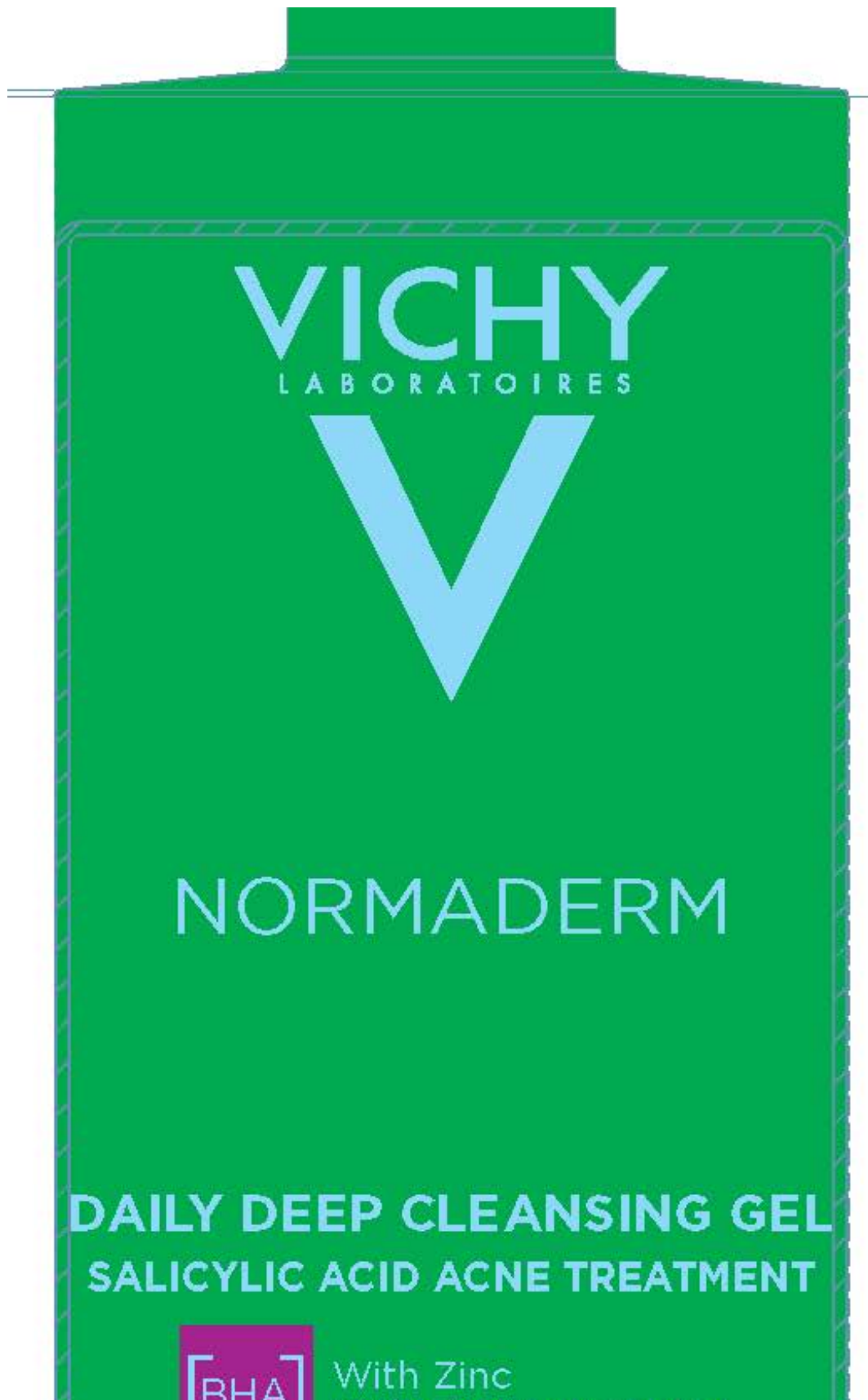
**Inactive ingredients**

water, coco-betaine, propanediol, PEG-120 methyl glucose dioleate, sodium chloride, sodium cocoyl glycinate, zinc gluconate, glycerin, sodium hydroxide, bifida ferment lysate, hydroxyacetophenone, caprylyl glycol, citric acid, trisodium ethylenediamine disuccinate, lactic acid, acetic acid, butylene glycol. Tocopherol, sodium benzoate, fragrance

**Questions or comments?**

Call toll free **1-877-378-4249**

Monday - Friday (9 a.m. to 5 p.m. EST)





**VICHY**  
LABORATOIRES



**NORMADERM**

**DAILY DEEP CLEANSING GEL**  
**SALICYLIC ACID ACNE TREATMENT**



With Zinc  
Vichy Volcanic Water

Clears acne blemishes.

Deeply cleanses the skin.  
Visibly improves skin texture & pores.

OILY AND ACNE-PRONE SKIN TYPES  
Suitable for sensitive skin | Allergy-tested

400 ml 13.5 FL.OZ.



**VICHY**  
LABORATOIRES



**NORMADERM**

**DAILY DEEP CLEANSING GEL**  
**SALICYLIC ACID ACNE TREATMENT**



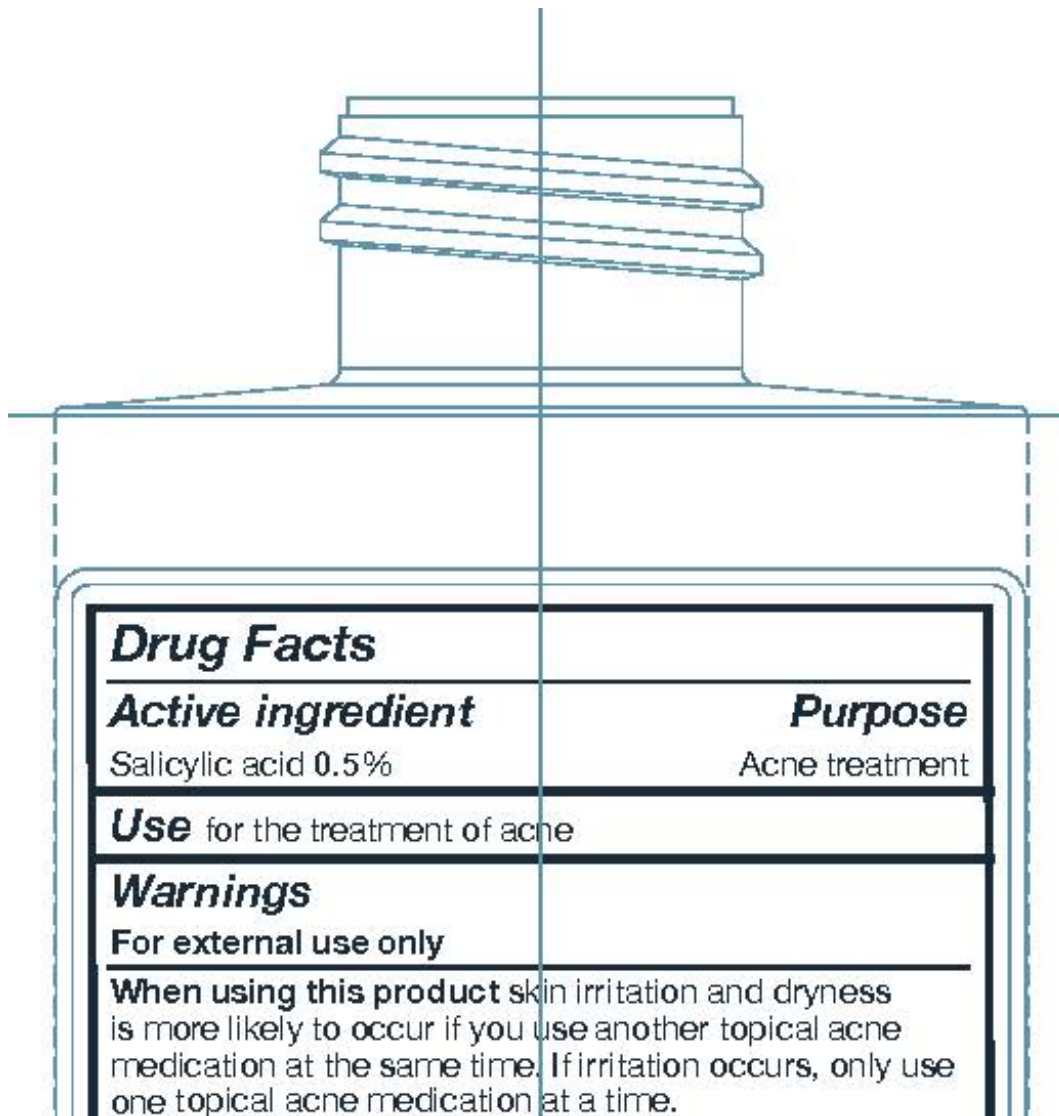
With Zinc  
Vichy Volcanic Water

Clears acne blemishes.

Deeply cleanses the skin.  
Visibly improves skin texture & pores.

OILY AND ACNE-PRONE SKIN TYPES  
Suitable for sensitive skin | Allergy-tested

400 ml 13.5 FL.OZ.



**Keep out of reach of children.**

If swallowed, get medical help or contact a Poison Control Center right away.

**Directions**

- use twice daily
- wet face, then work product into a lather
- massage onto face avoiding the eyes
- rinse well

**Inactive ingredients**

water, coco-betaine, propanediol, PEG-120 methyl glucose dioleate, sodium chloride, sodium cocoyl glycinate, zinc gluconate, glycerin, sodium hydroxide, bifida ferment lysate, hydroxyacetophenone, caprylyl glycol, citric acid, trisodium ethylenediamine disuccinate, lactic acid, acetic acid, butylene glycol, tocopherol, sodium benzoate, fragrance

**Questions or comments?**

Call toll free 1-877-378-4249  
Monday – Friday (9 a.m. to 5 p.m. EST)

689010 22

V70026669/5



L'Oréal USA S/D Inc., New York, NY 10001  
VICHY CAI/CAF 03 Vichy France  
TSA 75000 93584 ST OUEN CEDEX FR  
Made in France [www.vichyusa.com](http://www.vichyusa.com)

**VICHY LABORATOIRES NORMADERM DAILY DEEP CLEANSING ACNE TREATMENT**

salicylic acid gel

**Product Information**

<b>Product Type</b>	HUMAN OTC DRUG	<b>Item Code (Source)</b>	NDC:69625-630
<b>Route of Administration</b>	TOPICAL		



**Active Ingredient/Active Moiety**

Ingredient Name	Basis of Strength	Strength
Salicylic Acid (UNII: O414PZ4LPZ) (Salicylic Acid - UNII:O414PZ4LPZ)	Salicylic Acid	5 mg in 1 mL

**Inactive Ingredients**

Ingredient Name	Strength
WATER (UNII: 059QF0K00R)	
COCO-BETAINE (UNII: 03DH2IZ3FY)	
PROPANEDIOL (UNII: 5965N8W85T)	
PEG-120 METHYL GLUCOSE DIOLEATE (UNII: YM0K64F20V)	
SODIUM CHLORIDE (UNII: 451W47IQ8X)	
SODIUM COCOYL GLYCINATE (UNII: XLU9KH03XM)	
ZINC GLUCONATE (UNII: U6WSN5SQ1Z)	
GLYCERIN (UNII: PDC6A3C0OX)	
SODIUM HYDROXIDE (UNII: 55X04QC32I)	
HYDROXYACETOPHENONE (UNII: G1L3HT4CMH)	
CAPRYLYL GLYCOL (UNII: 00YIU5438U)	
CITRIC ACID MONOHYDRATE (UNII: 2968PHW8QP)	
TRISODIUM ETHYLENEDIAMINE DISUCCINATE (UNII: YA22H34H9Q)	
LACTIC ACID (UNII: 33X04XA5AT)	
ACETIC ACID (UNII: Q40Q9N063P)	
BUTYLENE GLYCOL (UNII: 3XUS85K0RA)	
TOCOPHEROL (UNII: R0ZB2556P8)	
SODIUM BENZOATE (UNII: OJ245FE5EU)	

**Packaging**

#	Item Code	Package Description	Marketing Start Date	Marketing End Date
1	NDC:69625-630-01	200 mL in 1 TUBE; Type 0: Not a Combination Product	07/01/2024	
2	NDC:69625-630-02	400 mL in 1 BOTTLE; Type 0: Not a Combination Product	07/01/2024	

**Marketing Information**

Marketing Category	Application Number or Monograph Citation	Marketing Start Date	Marketing End Date
OTC Monograph Drug	M006	07/01/2024	

**Labeler** - COSMETIQUE ACTIVE PRODUCTION (282658798)**Establishment**

Name	Address	ID/FEI	Business Operations
COSMETIQUE ACTIVE PRODUCTION		282658798	manufacture(69625-630) , pack(69625-630)

Revised: 7/2024

COSMETIQUE ACTIVE PRODUCTION