

**CLONAZEPAM- clonazepam tablet
REMEDYREPACK INC.**

Clonazepam Tablets, USP

Rx only

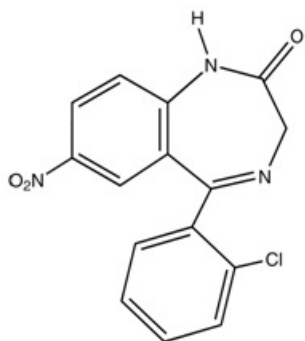
WARNING: RISKS FROM CONCOMITANT USE WITH OPIOIDS; ABUSE, MISUSE, AND ADDICTION; and DEPENDENCE AND WITHDRAWAL REACTIONS

- **Concomitant use of benzodiazepines and opioids may result in profound sedation, respiratory depression, coma, and death. Reserve concomitant prescribing of these drugs for patients for whom alternative treatment options are inadequate. Limit dosages and durations to the minimum required. Follow patients for signs and symptoms of respiratory depression and sedation (see WARNINGS and PRECAUTIONS).**
- **The use of benzodiazepines, including clonazepam tablets, exposes users to risks of abuse, misuse, and addiction, which can lead to overdose or death. Abuse and misuse of benzodiazepines commonly involve concomitant use of other medications, alcohol, and/or illicit substances, which is associated with an increased frequency of serious adverse outcomes. Before prescribing clonazepam tablets and throughout treatment, assess each patient's risk for abuse, misuse, and addiction (see WARNINGS).**
- **The continued use of benzodiazepines, including clonazepam tablets, may lead to clinically significant physical dependence. The risks of dependence and withdrawal increase with longer treatment duration and higher daily dose. Abrupt discontinuation or rapid dosage reduction of clonazepam tablets after continued use may precipitate acute withdrawal reactions, which can be life-threatening. To reduce the risk of withdrawal reactions, use a gradual taper to discontinue clonazepam tablets or reduce the dosage (see DOSAGE AND ADMINISTRATION and WARNINGS).**

DESCRIPTION

Clonazepam tablets USP, a benzodiazepine, is available as scored tablets debossed with "1" and "2" containing 0.5 mg of clonazepam and unscored tablets debossed with "C 1" on 1 mg tablets and "C 2" on 2 mg tablets containing 1 mg or 2 mg of clonazepam. Each tablet contains anhydrous lactose, lactose monohydrate, magnesium stearate, microcrystalline cellulose and starch (corn), with the following colorants: 0.5 mg-FD&C Yellow No. 6 Lake and 1 mg- FD&C Blue No.2 Lake.

Chemically, clonazepam is 5-(2-chlorophenyl)-1,3-dihydro-7-nitro-2 H-1,4-benzodiazepin-2-one. It is a light yellow crystalline powder. It has a molecular weight of 315.72 and the following structural formula:



CLINICAL PHARMACOLOGY

Pharmacodynamics:

The precise mechanism by which clonazepam exerts its antiseizure and antipanic effects is unknown, although it is believed to be related to its ability to enhance the activity of gamma aminobutyric acid (GABA), the major inhibitory neurotransmitter in the central nervous system.

Pharmacokinetics:

Clonazepam is rapidly and completely absorbed after oral administration. The absolute bioavailability of clonazepam is about 90%. Maximum plasma concentrations of clonazepam are reached within 1 to 4 hours after oral administration. Clonazepam is approximately 85% bound to plasma proteins. Clonazepam is highly metabolized, with less than 2% unchanged clonazepam being excreted in the urine. Biotransformation occurs mainly by reduction of the 7-nitro group to the 4-amino derivative. This derivative can be acetylated, hydroxylated and glucuronidated. Cytochrome P-450 including CYP3A, may play an important role in clonazepam reduction and oxidation. The elimination half-life of clonazepam is typically 30 to 40 hours. Clonazepam pharmacokinetics are dose-independent throughout the dosing range. There is no evidence that clonazepam induces its own metabolism or that of other drugs in humans.

Pharmacokinetics in Demographic Subpopulations and in Disease States:

Controlled studies examining the influence of gender and age on clonazepam pharmacokinetics have not been conducted, nor have the effects of renal or liver disease on clonazepam pharmacokinetics been studied. Because clonazepam undergoes hepatic metabolism, it is possible that liver disease will impair clonazepam elimination. Thus, caution should be exercised when administering clonazepam to these patients (see CONTRAINDICATIONS).

In children, clearance values of 0.42 ± 0.32 mL/min/kg (ages 2 to 18 years) and 0.88 ± 0.4 mL/min/kg (ages 7 to 12 years) were reported; these values decreased with increasing body weight. Ketogenic diet in children does not affect clonazepam concentrations.

Clinical Trials:

Panic Disorder:

The effectiveness of clonazepam in the treatment of panic disorder was demonstrated in two double-blind, placebo-controlled studies of adult outpatients who had a primary diagnosis of panic disorder (DSM-III-R) with or without agoraphobia. In these studies, clonazepam was shown to be significantly more effective than placebo in treating panic disorder on change from baseline in panic attack frequency, the Clinician's Global Impression Severity of Illness Score and the Clinician's Global Impression Improvement Score.

Study 1 was a 9-week, fixed-dose study involving clonazepam doses of 0.5, 1, 2, 3 or 4 mg/day or placebo. This study was conducted in four phases: a 1-week placebo lead-in, a 3-week upward titration, a 6-week fixed dose, and a 7-week discontinuance phase. A significant difference from placebo was observed consistently only for the 1 mg/day group. The difference between the 1 mg dose group and placebo in reduction from

baseline in the number of full panic attacks was approximately 1 panic attack per week. At endpoint, 74% of patients receiving clonazepam 1 mg/day were free of full panic attacks, compared to 56% of placebo-treated patients.

Study 2 was a 6-week, flexible-dose study involving clonazepam in a dose range of 0.5 to 4 mg/day or placebo. This study was conducted in three phases: a 1-week placebo lead-in, a 6-week optimal-dose, and a 6-week discontinuance phase. The mean clonazepam dose during the optimal dosing period was 2.3 mg/day. The difference between clonazepam and placebo in reduction from baseline in the number of full panic attacks was approximately 1 panic attack per week. At endpoint, 62% of patients receiving clonazepam were free of full panic attacks, compared to 37% of placebo-treated patients.

Subgroup analyses did not indicate that there were any differences in treatment outcomes as a function of race or gender.

INDICATIONS AND USAGE

Seizure Disorders:

Clonazepam tablets are useful alone or as an adjunct in the treatment of the Lennox-Gastaut syndrome (petit mal variant), akinetic, and myoclonic seizures. In patients with absence seizures (petit mal) who have failed to respond to succinimides, clonazepam tablets may be useful.

Some loss of effect may occur during the course of clonazepam treatment (see PRECAUTIONS: *Loss of Effect*).

Panic Disorder:

Clonazepam tablets are indicated for the treatment of panic disorder, with or without agoraphobia, as defined in DSM-V. Panic disorder is characterized by the occurrence of unexpected panic attacks and associated concern about having additional attacks, worry about the implications or consequences of the attacks, and/or a significant change in behavior related to the attacks.

The efficacy of clonazepam tablets was established in two 6- to 9-week trials in panic disorder patients whose diagnoses corresponded to the DSM-III-R category of panic disorder (see CLINICAL PHARMACOLOGY: *Clinical Trials*).

Panic disorder (DSM-V) is characterized by recurrent unexpected panic attacks, i.e., a discrete period of intense fear or discomfort in which four (or more) of the following symptoms develop abruptly and reach a peak within 10 minutes: (1) palpitations, pounding heart or accelerated heart rate; (2) sweating; (3) trembling or shaking; (4) sensations of shortness of breath or smothering; (5) feeling of choking; (6) chest pain or discomfort; (7) nausea or abdominal distress; (8) feeling dizzy, unsteady, lightheaded or faint; (9) derealization (feelings of unreality) or depersonalization (being detached from oneself); (10) fear of losing control; (11) fear of dying; (12) paresthesias (numbness or tingling sensations); (13) chills or hot flushes.

The effectiveness of clonazepam tablets in long-term use, that is, for more than 9 weeks, has not been systematically studied in controlled clinical trials. The physician who elects to use clonazepam tablets for extended periods should periodically reevaluate the long-term usefulness of the drug for the individual patient (see DOSAGE AND ADMINISTRATION).

CONTRAINDICATIONS

Clonazepam tablets are contraindicated in patients with the following conditions:

- History of sensitivity to benzodiazepines
- Clinical or biochemical evidence of significant liver disease
- Acute narrow angle glaucoma (it may be used in patients with open angle glaucoma who are receiving appropriate therapy).

WARNINGS

Risks from Concomitant Use with Opioids: Concomitant use of benzodiazepines, including clonazepam tablets, and opioids may result in profound sedation, respiratory depression, coma, and death. Because of these risks, reserve concomitant prescribing of benzodiazepines and opioids for patients for whom alternative treatment options are inadequate.

Observational studies have demonstrated that concomitant use of opioid analgesics and benzodiazepines increases the risk of drug-related mortality compared to use of opioids alone. If a decision is made to prescribe clonazepam tablets concomitantly with opioids, prescribe the lowest effective dosages and minimum durations of concomitant use, and follow patients closely for signs and symptoms of respiratory depression and sedation. Advise both patients and caregivers about the risks of respiratory depression and sedation when clonazepam tablets are used with opioids (see PRECAUTIONS: *Information for Patients* and PRECAUTIONS: *Drug Interactions*).

Abuse, Misuse, and Addiction: The use of benzodiazepines, including clonazepam tablets, exposes users to the risks of abuse, misuse, and addiction, which can lead to overdose or death. Abuse and misuse of benzodiazepines often (but not always) involve the use of doses greater than the maximum recommended dosage and commonly involve concomitant use of other medications, alcohol, and/or illicit substances, which is associated with an increased frequency of serious adverse outcomes, including respiratory depression, overdose, or death (see DRUG ABUSE AND DEPENDENCE: *Abuse*).

Before prescribing clonazepam tablets and throughout treatment, assess each patient's risk for abuse, misuse, and addiction (e.g., using a standardized screening tool). Use of clonazepam tablets, particularly in patients at elevated risk, necessitates counseling about the risks and proper use of clonazepam tablets along with monitoring for signs and symptoms of abuse, misuse, and addiction. Prescribe the lowest effective dosage; avoid or minimize concomitant use of CNS depressants and other substances associated with abuse, misuse, and addiction (e.g., opioid analgesics, stimulants); and advise patients on the proper disposal of unused drug. If a substance use disorder is suspected, evaluate the patient and institute (or refer them for) early treatment, as appropriate.

Dependence and Withdrawal Reactions: To reduce the risk of withdrawal reactions, use a gradual taper to discontinue clonazepam tablets or reduce the dosage (a patient-specific plan should be used to taper the dose) (see DOSAGE AND ADMINISTRATION: *Discontinuation or Dosage Reduction of clonazepam tablets*).

Patients at an increased risk of withdrawal adverse reactions after benzodiazepine discontinuation or rapid dosage reduction include those who take higher dosages, and those who have had longer durations of use.

Acute Withdrawal Reactions The continued use of benzodiazepines, including clonazepam tablets, may lead to clinically significant physical dependence. Abrupt discontinuation or rapid dosage reduction of clonazepam tablets after continued use, or administration of flumazenil (a benzodiazepine antagonist) may precipitate acute withdrawal reactions, which can be life-threatening (e.g., seizures) (see DRUG ABUSE AND DEPENDENCE: *Dependence*).

Protracted Withdrawal Syndrome In some cases, benzodiazepine users have developed a protracted withdrawal syndrome with withdrawal symptoms lasting weeks to more than 12 months (see DRUG ABUSE AND DEPENDENCE: *Dependence*).

Interference with Cognitive and Motor Performance: Since clonazepam tablets produces CNS depression, patients receiving this drug should be cautioned against engaging in hazardous occupations requiring mental alertness, such as operating machinery or driving a motor vehicle. They should also be warned about the concomitant use of alcohol or other CNS-depressant drugs during clonazepam therapy (see PRECAUTIONS: *Drug Interactions* and PRECAUTIONS: *Information for Patients*).

Suicidal Behavior and Ideation:

Antiepileptic drugs (AEDs), including clonazepam tablets, increase the risk of suicidal thoughts or behavior in patients taking these drugs for any indication. Patients treated with any AED for any indication should be monitored for the emergence or worsening of depression, suicidal thoughts or behavior, and/or any unusual changes in mood or behavior.

Pooled analyses of 199 placebo-controlled clinical trials (mono- and adjunctive therapy) of 11 different AEDs showed that patients randomized to one of the AEDs had approximately twice the risk (adjusted Relative Risk 1.8, 95% CI:1.2, 2.7) of suicidal thinking or behavior compared to patients randomized to placebo. In these trials, which had a median treatment duration of 12 weeks, the estimated incidence rate of suicidal behavior or ideation among 27,863 AED-treated patients was 0.43% compared to 0.24% among 16,029 placebo-treated patients, representing an increase of approximately one case of suicidal thinking or behavior for every 530 patients treated. There were four suicides in drug-treated patients in the trials and none in placebo-treated patients, but the number is too small to allow any conclusion about drug effect on suicide.

The increased risk of suicidal thoughts or behavior with AEDs was observed as early as one week after starting drug treatment with AEDs and persisted for the duration of treatment assessed. Because most trials included in the analysis did not extend beyond 24 weeks, the risk of suicidal thoughts or behavior beyond 24 weeks could not be assessed.

The risk of suicidal thoughts or behavior was generally consistent among drugs in the data analyzed. The finding of increased risk with AEDs of varying mechanisms of action and across a range of indications suggests that the risk applies to all AEDs used for any indication. The risk did not vary substantially by age (5 to 100 years) in the clinical trials analyzed.

Table 1 shows absolute and relative risk by indication for all evaluated AEDs.

Table 1 Risk by Indication for Antiepileptic Drugs in the Pooled Analysis

Indication	Placebo Patients with Events Per 1000 Patients	Drug Patients with Events Per 1000 Patients	Relative Risk: Incidence of Events in Drug Patients/Incidence in Placebo Patients	Risk Difference: Additional Drug Events per 1000 Patients
Epilepsy	1.0	3.4	3.5	2.4
Psychiatric	5.7	8.5	1.5	2.9
Other	1.0	1.8	1.9	0.9
Total	2.4	4.3	1.8	1.9

The relative risk for suicidal thoughts or behavior was higher in clinical trials for epilepsy than in clinical trials for psychiatric or other conditions, but the absolute risk differences were similar for the epilepsy and psychiatric indications.

Anyone considering prescribing clonazepam tablets or any other AED must balance the risk of suicidal thoughts or behavior with the risk of untreated illness. Epilepsy and many other illnesses for which AEDs are prescribed are themselves associated with morbidity and mortality and with an increased risk of suicidal thoughts and behavior. Should suicidal thoughts and behavior emerge during treatment, the prescriber needs to consider whether the emergence of these symptoms in any given patient may be related to the illness being treated.

Patients, their caregivers, and families should be informed that AEDs increase the risk of suicidal thoughts and behavior and should be advised of the need to be alert for the emergence or worsening of the signs and symptoms of depression, any unusual changes in mood or behavior, or the emergence of suicidal thoughts, behavior, or thoughts about self-harm. Behaviors of concern should be reported immediately to healthcare providers.

Neonatal Sedation and Withdrawal Syndrome: Use of clonazepam tablets late in pregnancy can result in sedation (respiratory depression, lethargy, hypotonia) and/or withdrawal symptoms (hyperreflexia, irritability, restlessness, tremors, inconsolable crying, and feeding difficulties) in the neonate (see PRECAUTIONS: Pregnancy). Monitor neonates exposed to clonazepam tablets during pregnancy or labor for signs of sedation and monitor neonates exposed to clonazepam tablets during pregnancy for signs of withdrawal; manage these neonates accordingly.

PRECAUTIONS

General:**Worsening of Seizures:**

When used in patients in whom several different types of seizure disorders coexist, clonazepam tablets may increase the incidence or precipitate the onset of generalized tonic-clonic seizures (grand mal). This may require the addition of appropriate anticonvulsants or an increase in their dosages. The concomitant use of valproic acid and clonazepam tablets may produce absence status.

Loss of Effect:

In some studies, up to 30% of patients who initially responded have shown a loss of anticonvulsant activity, often within 3 months of administration. In some cases, dosage adjustment may reestablish efficacy.

Laboratory Testing During Long-Term Therapy:

Periodic blood counts and liver function tests are advisable during long-term therapy with clonazepam tablets.

Psychiatric and Paradoxical Reactions:

Paradoxical reactions, such as agitation, irritability, aggression, anxiety, anger, nightmares, hallucinations, and psychoses are known to occur when using benzodiazepines (see ADVERSE REACTIONS: *Psychiatric*). Should this occur, the use of the drug should be discontinued gradually (see WARNINGS: *Dependence and Withdrawal Reactions* and DRUG ABUSE AND DEPENDENCE: *Dependence*). Paradoxical reactions are more likely to occur in children and in the elderly.

Caution in Renally Impaired Patients:

Metabolites of clonazepam tablets are excreted by the kidneys; to avoid their excess accumulation, caution should be exercised in the administration of the drug to patients with impaired renal function.

Hypersalivation: Clonazepam tablets may produce an increase in salivation. This should be considered before giving the drug to patients who have difficulty handling secretions.

Respiratory Depression: Clonazepam tablets may cause respiratory depression and should be used with caution in patients with compromised respiratory function (e.g., chronic obstructive pulmonary disease, sleep apnea).

Porphyria: Clonazepam tablets may have a porphyrogenic effect and should be used with care in patients with porphyria.

Information for Patients:

A clonazepam tablets Medication Guide must be given to the patient each time clonazepam tablets are dispensed, as required by law. Patients should be instructed to take clonazepam tablets only as prescribed. Physicians are advised to discuss the following issues with patients for whom they prescribe clonazepam tablets:

Risks from Concomitant Use with Opioids: Inform patients and caregivers that potentially fatal additive effects may occur if clonazepam tablets are used with opioids and not to use such drugs concomitantly unless supervised by a health care provider (see WARNINGS: *Risks from Concomitant Use with Opioids* and PRECAUTIONS: *Drug Interactions*).

Abuse, Misuse, and Addiction: Inform patients that the use of clonazepam tablets, even at recommended dosages, exposes users to risks of abuse, misuse, and addiction, which can lead to overdose and death, especially when used in combination with other medications (e.g., opioid analgesics), alcohol, and/or illicit substances. Inform patients about the signs and symptoms of benzodiazepine abuse, misuse, and addiction; to seek medical help if they develop these signs and/or symptoms; and on the proper disposal of unused drug (see WARNINGS: *Abuse, Misuse, and Addiction* and DRUG ABUSE AND DEPENDENCE).

Withdrawal Reactions: Inform patients that the continued use of clonazepam tablets may lead to clinically significant physical dependence and that abrupt discontinuation or rapid dosage reduction of clonazepam tablets may precipitate acute withdrawal reactions, which can be life-threatening. Inform patients that in some cases, patients taking benzodiazepines have developed a protracted withdrawal syndrome with withdrawal symptoms lasting weeks to more than 12 months. Instruct patients that discontinuation or dosage reduction of clonazepam tablets may require a slow taper (see WARNINGS: *Dependence and Withdrawal Reactions* and DRUG ABUSE AND DEPENDENCE).

Interference With Cognitive and Motor Performance:

Because benzodiazepines have the potential to impair judgment, thinking or motor skills, patients should be cautioned about operating hazardous machinery, including automobiles, until they are reasonably certain that clonazepam therapy does not affect them adversely.

Suicidal Thinking and Behavior:

Patients, their caregivers, and families should be counseled that AEDs, including clonazepam tablets, may increase the risk of suicidal thoughts and behavior and should be advised of the need to be alert for the emergence or worsening of symptoms of depression, any unusual changes in mood or behavior, or the emergence of suicidal thoughts, behavior, or thoughts about self-harm. Behaviors of concern should be reported immediately to healthcare providers.

Pregnancy:

Advise pregnant females that use of clonazepam tablets late in pregnancy can result in sedation (respiratory depression, lethargy, hypotonia) and/or withdrawal symptoms (hyperreflexia, irritability, restlessness, tremors, inconsolable crying, and feeding difficulties) in newborns (see WARNINGS: Neonatal Sedation and Withdrawal Syndrome and PRECAUTIONS: Pregnancy). Instruct patients to inform their healthcare provider if they are pregnant. Encourage patients to enroll in the North American Antiepileptic Drug (NAAED) Pregnancy Registry if they become pregnant while taking clonazepam tablets. This registry is collecting information about the safety of antiepileptic drugs during pregnancy (see PRECAUTIONS: *Pregnancy*).

Nursing:

Instruct patients to inform their healthcare provider if they are breastfeeding or intend to breastfeed. Instruct breastfeeding patients who take clonazepam tablets to monitor their infants for excessive sedation, poor feeding and poor weight gain, and to seek medical attention if they notice these signs (see PRECAUTIONS: Nursing Mothers).

Concomitant Medication:

Patients should be advised to inform their physicians if they are taking, or plan to take, any prescription or over-the-counter drugs, since there is a potential for interactions.

Alcohol:

Patients should be advised to avoid alcohol while taking clonazepam tablets.

Drug Interactions:

Effect of Concomitant Use of Benzodiazepines and Opioids: The concomitant use of benzodiazepines and opioids increases the risk of respiratory depression because of actions at different receptor sites in the CNS that control respiration. Benzodiazepines interact at GABAA sites, and opioids interact primarily at mu receptors. When benzodiazepines and opioids are combined, the potential for benzodiazepines to significantly worsen opioid-related respiratory depression exists. Limit dosage and duration of concomitant use of benzodiazepines and opioids, and follow patients closely for respiratory depression and sedation.

Effect of Clonazepam on the Pharmacokinetics of Other Drugs:

Clonazepam does not appear to alter the pharmacokinetics of carbamazepine or phenobarbital. Clonazepam has the potential to influence concentrations of phenytoin.

Monitoring of phenytoin concentration is recommended when clonazepam is co-administrated with phenytoin. The effect of clonazepam on the metabolism of other drugs has not been investigated.

Effect of Other Drugs on the Pharmacokinetics of Clonazepam:

Literature reports suggest that ranitidine, an agent that decreases stomach acidity, does not greatly alter clonazepam pharmacokinetics.

In a study in which the 2 mg clonazepam orally disintegrating tablet was administered with and without propantheline (an anticholinergic agent with multiple effects on the GI tract) to healthy volunteers, the AUC of clonazepam was 10% lower and the C_{max} of clonazepam was 20% lower when the orally disintegrating tablet was given with propantheline compared to when it was given alone.

The selective serotonin reuptake inhibitors sertraline (weak CYP3A4 inducer) and fluoxetine (CYP2D6 inhibitor), and the anti-epileptic drug felbamate (CYP2C19 inhibitor and CYP3A4 inducer) do not affect the pharmacokinetics of clonazepam. Cytochrome P450 inducers, such as phenytoin, carbamazepine, lamotrigine, and phenobarbital induce clonazepam metabolism, causing an approximately 38% decrease in plasma clonazepam levels. Although clinical studies have not been performed, based on the involvement of the cytochrome P-450 3A family in clonazepam metabolism, inhibitors of this enzyme system, notably oral antifungal agents (e.g., fluconazole), should be used cautiously in patients receiving clonazepam because they may impair the metabolism of clonazepam leading to exaggerated concentrations and effects.

Pharmacodynamic Interactions:

The CNS-depressant action of the benzodiazepine class of drugs may be potentiated by alcohol, narcotics, barbiturates, nonbarbiturate hypnotics, antianxiety agents, the phenothiazines, thioxanthene and butyrophenone classes of antipsychotic agents, monoamine oxidase inhibitors and the tricyclic antidepressants, and by other anticonvulsant drugs.

Carcinogenesis, Mutagenesis, Impairment of Fertility:

Carcinogenesis

Carcinogenicity studies have not been conducted with clonazepam.

Mutagenesis

The data currently available are not sufficient to determine the genotoxic potential of clonazepam.

Impairment of Fertility

In a two-generation fertility study in which clonazepam was given orally to rats at 10 and 100 mg/kg/day, there was a decrease in the number of pregnancies and in the number of offspring surviving until weaning. The lowest dose tested is approximately 5 and 24 times the maximum recommended human dose (MRHD) of 20 mg/day for seizure disorders and 4 mg/day for panic disorder, respectively, on a body surface area (mg/m²) basis.

Pregnancy:

Pregnancy Exposure Registry

There is a pregnancy exposure registry that monitors pregnancy outcomes in women exposed to AEDs, such as clonazepam tablets, during pregnancy. Healthcare providers are encouraged to recommend that pregnant women taking clonazepam tablets enroll in the NAAED Pregnancy Registry by calling 1-888-233-2334 or online at <http://www.aedpregnancyregistry.org/>.

Risk Summary

Neonates born to mothers using benzodiazepines late in pregnancy have been reported to experience symptoms of sedation and/or neonatal withdrawal (see WARNINGS: *Neonatal Sedation and Withdrawal Syndrome, and Clinical Considerations*). Available data from published observational studies of pregnant women exposed to benzodiazepines

do not report a clear association with benzodiazepines and major birth defects (see Data).

Administration of clonazepam to pregnant rabbits during the period of organogenesis resulted in developmental toxicity, including increased incidences of fetal malformations, at doses similar to or below therapeutic doses in patients (see Animal Data). Data for other benzodiazepines suggest the possibility of long-term effects on neurobehavioral and immunological function in animals following prenatal exposure to benzodiazepines at clinically relevant doses.

The background risk of major birth defects and miscarriage for the indicated population is unknown. All pregnancies have a background risk of birth defect, loss, or other adverse outcomes. In the U.S. general population, the estimated risk of major birth defects and of miscarriage in clinically recognized pregnancies is 2% to 4% and 15% to 20%, respectively.

Clinical Considerations

Fetal/Neonatal Adverse Reactions

Benzodiazepines cross the placenta and may produce respiratory depression, hypotonia and sedation in neonates. Monitor neonates exposed to clonazepam tablets during pregnancy or labor for signs of sedation, respiratory depression, hypotonia, and feeding problems. Monitor neonates exposed to clonazepam tablets during pregnancy for signs of withdrawal. Manage these neonates accordingly (see WARNINGS: Neonatal Sedation and Withdrawal Syndrome).

Data

Human Data

Published data from observational studies on the use of benzodiazepines during pregnancy do not report a clear association with benzodiazepines and major birth defects. Although early studies reported an increased risk of congenital malformations with diazepam and chlordiazepoxide, there was no consistent pattern noted. In addition, the majority of more recent case-control and cohort studies of benzodiazepine use during pregnancy, which were adjusted for confounding exposures to alcohol, tobacco and other medications, have not confirmed these findings.

Animal Data

In three studies in which clonazepam was administered orally to pregnant rabbits at doses of 0.2, 1, 5, or 10 mg/kg/day during the period of organogenesis, a similar pattern of malformations (cleft palate, open eyelid, fused sternbrae and limb defects) was observed at all doses, in a low, non-dose-related incidence. The lowest dose tested is less than the maximum recommended human dose (MRHD) of 20 mg/day for seizure disorders and similar to the MRHD of 4 mg/day for panic disorder, on a mg/m² basis. Reductions in maternal weight gain occurred at doses of 5 mg/kg/day or greater and reduction in embryofetal growth occurred in one study at a dose of 10 mg/kg/day.

No adverse maternal or embryofetal effects were observed in mice or rats following oral administration of clonazepam during organogenesis of doses up to 15 or 40 mg/kg/day, respectively (4 and 20 times the MRHD of 20 mg/day for seizure disorders and 20 and 100 times the MRHD of 4 mg/day for panic disorder, respectively, on a mg/m² basis).

Data for other benzodiazepines suggest the possibility of adverse developmental effects (long-term effects on neurobehavioral and immunological function) in animals following prenatal exposure to benzodiazepines.

Nursing Mothers:

Risk Summary

Clonazepam is excreted in human milk. There are reports of sedation, poor feeding and poor weight gain in infants exposed to benzodiazepines through breast milk. There are no data on the effects of clonazepam on milk production.

The developmental and health benefits of breastfeeding should be considered along with the mother's clinical need for clonazepam tablets and any potential adverse effects on the breastfed infant from clonazepam tablets or from the underlying maternal condition.

Clinical Considerations

Infants exposed to clonazepam through breast milk should be monitored for sedation, poor feeding and poor weight gain.

Pediatric Use:

Because of the possibility that adverse effects on physical or mental development could become apparent only after many years, a benefit-risk consideration of the long-term use of clonazepam tablets is important in pediatric patients being treated for seizure disorder (see INDICATIONS AND USAGE and DOSAGE AND ADMINISTRATION).

Safety and effectiveness in pediatric patients with panic disorder below the age of 18 have not been established.

Geriatric Use:

Clinical studies of clonazepam tablets did not include sufficient numbers of subjects aged 65 and over to determine whether they respond differently from younger subjects. Other reported clinical experience has not identified differences in responses between the elderly and younger patients. In general, dose selection for an elderly patient should be cautious, usually starting at the low end of the dosing range, reflecting the greater frequency of decreased hepatic, renal, or cardiac function, and of concomitant disease or other drug therapy.

Because clonazepam undergoes hepatic metabolism, it is possible that liver disease will impair clonazepam elimination. Metabolites of clonazepam tablets are excreted by the kidneys; to avoid their excess accumulation, caution should be exercised in the administration of the drug to patients with impaired renal function. Because elderly patients are more likely to have decreased hepatic and/or renal function, care should be taken in dose selection, and it may be useful to assess hepatic and/or renal function at the time of dose selection.

Sedating drugs may cause confusion and over-sedation in the elderly; elderly patients generally should be started on low doses of clonazepam tablets and observed closely.

ADVERSE REACTIONS

The adverse experiences for clonazepam tablets are provided separately for patients with seizure disorders and with panic disorder.

Seizure Disorders:

The most frequently occurring side effects of clonazepam tablets are referable to CNS depression. Experience in treatment of seizures has shown that drowsiness has occurred in approximately 50% of patients and ataxia in approximately 30%. In some cases, these may diminish with time; behavior problems have been noted in approximately 25% of patients. Others, listed by system, including those identified during postapproval use of clonazepam tablets are:

Cardiovascular: Palpitations

Dermatologic: Hair loss, hirsutism, skin rash, ankle and facial edema

Gastrointestinal: Anorexia, coated tongue, constipation, diarrhea, dry mouth, encopresis, gastritis, increased appetite, nausea, sore gums

Genitourinary: Dysuria, enuresis, nocturia, urinary retention

Hematopoietic: Anemia, leukopenia, thrombocytopenia, eosinophilia

Hepatic: Hepatomegaly, transient elevations of serum transaminases and alkaline phosphatase

Musculoskeletal: Muscle weakness, pains

Miscellaneous: Dehydration, general deterioration, fever, lymphadenopathy, weight loss or gain

Neurologic: Abnormal eye movements, aphonia, choreiform movements, coma, diplopia, dysarthria, dysdiadochokinesis, "glassy-eyed" appearance, headache, hemiparesis, hypotonia, nystagmus, respiratory depression, slurred speech, tremor, vertigo

Psychiatric: Confusion, depression, amnesia, hysteria, increased libido, insomnia, psychosis (the behavior effects are more likely to occur in patients with a history of psychiatric disturbances).

The following paradoxical reactions have been observed: irritability, aggression, agitation, nervousness, hostility, anxiety, sleep disturbances, nightmares, abnormal dreams, hallucinations.

Respiratory: Chest congestion, rhinorrhea, shortness of breath, hypersecretion in upper respiratory passages

Panic Disorder:

Adverse events during exposure to clonazepam tablets were obtained by spontaneous report and recorded by clinical investigators using terminology of their own choosing. Consequently, it is not possible to provide a meaningful estimate of the proportion of individuals experiencing adverse events without first grouping similar types of events into a smaller number of standardized event categories. In the tables and tabulations that follow, CIGY dictionary terminology has been used to classify reported adverse events, except in certain cases in which redundant terms were collapsed into more meaningful terms, as noted below.

The stated frequencies of adverse events represent the proportion of individuals who experienced, at least once, a treatment-emergent adverse event of the type listed. An event was considered treatment-emergent if it occurred for the first time or worsened while receiving therapy following baseline evaluation.

Adverse Findings Observed in Short-Term, Placebo-Controlled Trials:

Adverse Events Associated with Discontinuation of Treatment:

Overall, the incidence of discontinuation due to adverse events was 17% in clonazepam tablets compared to 9% for placebo in the combined data of two 6- to 9-week trials. The most common events ($\geq 1\%$) associated with discontinuation and a dropout rate twice or greater for clonazepam tablets than that of placebo included the following:

Table 2 Most Common Adverse Events ($\geq 1\%$) Associated with Discontinuation of Treatment

Adverse Event	Clonazepam Tablets (N = 574)	Placebo (N = 294)
Somnolence	7%	1%
Depression	4%	1%
Dizziness	1%	< 1%
Nervousness	1%	0%
Ataxia	1%	0%
Intellectual Ability Reduced	1%	0%

Adverse Events Occurring at an Incidence of 1% or More among Clonazepam Tablets-Treated Patients:

Table 3 enumerates the incidence, rounded to the nearest percent, of treatment-emergent adverse events that occurred during acute therapy of panic disorder from a pool of two 6- to 9-week trials. Events reported in 1% or more of patients treated with clonazepam tablets (doses ranging from 0.5 to 4 mg/day) and for which the incidence was greater than that in placebo-treated patients are included.

The prescriber should be aware that the figures in Table 3 cannot be used to predict the incidence of side effects in the course of usual medical practice where patient characteristics and other factors differ from those that prevailed in the clinical trials. Similarly, the cited frequencies cannot be compared with figures obtained from other clinical investigations involving different treatments, uses and investigators. The cited figures, however, do provide the prescribing physician with some basis for estimating the relative contribution of drug and nondrug factors to the side effect incidence in the population studied.

Table 3. Treatment-Emergent Adverse Event Incidence in 6- to 9-Week Placebo-Controlled Clinical Trials *

Clonazepam Maximum Daily Dose						
Adverse Event by Body System	< 1 mg n = 96 %	1- < 2 mg n = 129 %	2- < 3 mg n = 113 %	≥ 3 mg n = 235 %	All Clonazepam Tablets Groups N = 574 %	Placebo N = 294 %
Central & Peripheral Nervous System						
Somnolence †	26	35	50	36	37	10
Dizziness	5	5	12	8	8	4
Coordination Abnormal †	1	2	7	9	6	0
Ataxia †	2	1	8	8	5	0
Dysarthria †	0	0	4	3	2	0
Psychiatric						
Depression	7	6	8	8	7	1
Memory Disturbance	2	5	2	5	4	2
Nervousness	1	4	3	4	3	2
Intellectual Ability Reduced	0	2	4	3	2	0
Emotional Lability	0	1	2	2	1	1
Libido Decreased	0	1	3	1	1	0
Confusion	0	2	2	1	1	0
Respiratory System						
Upper Respiratory Tract Infection †	10	10	7	6	8	4
Sinusitis	4	2	8	4	4	3
Rhinitis	3	2	4	2	2	1
Coughing	2	2	4	0	2	0
Pharyngitis	1	1	3	2	2	1
Bronchitis	1	0	2	2	1	1
Gastrointestinal System						
Constipation †	0	1	5	3	2	2
Appetite Decreased	1	1	0	3	1	1
Abdominal Pain †	2	2	2	0	1	1
Body as a Whole						
Fatigue	9	6	7	7	7	4
Allergic Reaction	3	1	4	2	2	1
Musculoskeletal						
Myalgia	2	1	4	0	1	1
Resistance Mechanism Disorders						
Influenza	3	2	5	5	4	3
Urinary System						
Micturition Frequency	1	2	2	1	1	0
Urinary Tract Infection †	0	0	2	2	1	0
Vision Disorders						
Blurred Vision	1	2	3	0	1	1
Reproductive Disorders[‡]						
Female						

Dysmenorrhea	0	6	5	2	3	2
Colpitis	4	0	2	1	1	1
Male						
Ejaculation Delayed	0	0	2	2	1	0
Impotence	3	0	2	1	1	0

* Events reported by at least 1% of patients treated with clonazepam tablets and for which the incidence was greater than that for placebo.

† Indicates that the p-value for the dose-trend test (Cochran-Mantel-Haenszel) for adverse event incidence was ≤ 0.10 .

‡ Denominators for events in gender-specific systems are: n = 240 (clonazepam), 102 (placebo) for male, and 334 (clonazepam), 192 (placebo) for female.

Commonly Observed Adverse Events:

Table 4. Incidence of Most Commonly Observed Adverse Events *in Acute Therapy in Pool of 6- to 9- Week Trials

Adverse Event	Clonazepam (N = 574)	Placebo (n = 294)
Somnolence	37%	10%
Depression	7%	1%
Coordination Abnormal	6%	0%
Ataxia	5%	0%

* Treatment-emergent events for which the incidence in the clonazepam patients was $\geq 5\%$ and at least twice that in the placebo patients.

Treatment-Emergent Depressive Symptoms:

In the pool of two short-term placebo-controlled trials, adverse events classified under the preferred term “depression” were reported in 7% of clonazepam tablets-treated patients compared to 1% of placebo-treated patients, without any clear pattern of dose relatedness. In these same trials, adverse events classified under the preferred term “depression” were reported as leading to discontinuation in 4% of clonazepam tablets-treated patients compared to 1% of placebo-treated patients. While these findings are noteworthy, Hamilton Depression Rating Scale (HAM-D) data collected in these trials revealed a larger decline in HAM-D scores in the clonazepam group than the placebo group suggesting that clonazepam tablets-treated patients were not experiencing a worsening or emergence of clinical depression.

Other Adverse Events Observed During the Premarketing Evaluation of Clonazepam Tablets in Panic Disorder:

Following is a list of modified CIGY terms that reflect treatment-emergent adverse events reported by patients treated with clonazepam tablets at multiple doses during clinical trials. All reported events are included except those already listed in Table 3 or elsewhere in labeling, those events for which a drug cause was remote, those event terms which were so general as to be uninformative, and events reported only once and which did not have a substantial probability of being acutely life-threatening. It is important to emphasize that, although the events occurred during treatment with clonazepam tablets, they were not necessarily caused by it.

Events are further categorized by body system and listed in order of decreasing frequency. These adverse events were reported infrequently, which is defined as occurring in 1/100 to 1/1000 patients.

Body as a Whole: weight increase, accident, weight decrease, wound, edema, fever, shivering, abrasions, ankle edema, edema foot, edema periorbital, injury, malaise, pain, cellulitis, inflammation localized

Cardiovascular Disorders: chest pain, hypotension postural

Central and Peripheral Nervous System Disorders: migraine, paresthesia, drunkenness, feeling of enuresis, paresis, tremor, burning skin, falling, head fullness, hoarseness, hyperactivity, hypoesthesia, tongue thick, twitching

Gastrointestinal System Disorders: abdominal discomfort, gastrointestinal inflammation, stomach upset, toothache, flatulence, pyrosis, saliva increased, tooth disorder, bowel

movements frequent, pain pelvic, dyspepsia, hemorrhoids

Hearing and Vestibular Disorders: vertigo, otitis, earache, motion sickness

Heart Rate and Rhythm Disorders: palpitation

Metabolic and Nutritional Disorders: thirst, gout

Musculoskeletal System Disorders: back pain, fracture traumatic, sprains and strains, pain leg, pain nape, cramps muscle, cramps leg, pain ankle, pain shoulder, tendinitis, arthralgia, hypertonia, lumbago, pain feet, pain jaw, pain knee, swelling knee

Platelet, Bleeding and Clotting Disorders: bleeding dermal

Psychiatric Disorders: insomnia, organic disinhibition, anxiety, depersonalization, dreaming excessive, libido loss, appetite increased, libido increased, reactions decreased, aggression, apathy, disturbance in attention, excitement, anger, hunger abnormal, illusion, nightmares, sleep disorder, suicide ideation, yawning

Reproductive Disorders, Female: breast pain, menstrual irregularity

Reproductive Disorders, Male: ejaculation decreased

Resistance Mechanism Disorders: infection mycotic, infection viral, infection streptococcal, herpes simplex infection, infectious mononucleosis, moniliasis

Respiratory System Disorders: sneezing excessive, asthmatic attack, dyspnea, nosebleed, pneumonia, pleurisy

Skin and Appendages Disorders: acne flare, alopecia, xeroderma, dermatitis contact, flushing, pruritus, pustular reaction, skin burns, skin disorder

Special Senses Other, Disorders: taste loss

Urinary System Disorders: dysuria, cystitis, polyuria, urinary incontinence, bladder dysfunction, urinary retention, urinary tract bleeding, urine discoloration

Vascular (Extracardiac) Disorders: thrombophlebitis leg

Vision Disorders: eye irritation, visual disturbance, diplopia, eye twitching, styes, visual field defect, xerophthalmia

DRUG ABUSE AND DEPENDENCE

Controlled Substance: Clonazepam tablets contains clonazepam, a Schedule IV controlled substance.

Abuse: Clonazepam tablets are a benzodiazepine and a CNS depressant with a potential for abuse and addiction. Abuse is the intentional, non-therapeutic use of a drug, even once, for its desirable psychological or physiological effects. Misuse is the intentional use, for therapeutic purposes, of a drug by an individual in a way other than prescribed by a health care provider or for whom it was not prescribed. Drug addiction is a cluster of behavioral, cognitive, and physiological phenomena that may include a strong desire to take the drug, difficulties in controlling drug use (e.g., continuing drug use despite harmful consequences, giving a higher priority to drug use than other activities and obligations), and possible tolerance or physical dependence. Even taking benzodiazepines as prescribed may put patients at risk for abuse and misuse of their medication. Abuse and misuse of benzodiazepines may lead to addiction.

Abuse and misuse of benzodiazepines often (but not always) involve the use of doses greater than the maximum recommended dosage and commonly involve concomitant use of other medications, alcohol, and/or illicit substances, which is associated with an increased frequency of serious adverse outcomes, including respiratory depression, overdose, or death. Benzodiazepines are often sought by individuals who abuse drugs and other substances, and by individuals with addictive disorders (see WARNINGS: *Abuse, Misuse, and Addiction*).

The following adverse reactions have occurred with benzodiazepine abuse and/or misuse: abdominal pain, amnesia, anorexia, anxiety, aggression, ataxia, blurred vision, confusion, depression, disinhibition, disorientation, dizziness, euphoria, impaired concentration and memory, indigestion, irritability, muscle pain, slurred speech, tremors, and vertigo.

The following severe adverse reactions have occurred with benzodiazepine abuse and/or misuse: delirium, paranoia, suicidal ideation and behavior, seizures, coma, breathing difficulty, and death. Death is more often associated with polysubstance use (especially benzodiazepines with other CNS depressants such as opioids and alcohol).

Dependence:

Physical Dependence:

Clonazepam tablets may produce physical dependence from continued therapy. Physical dependence is a state that develops as a result of physiological adaptation in response to repeated drug use, manifested by withdrawal signs and symptoms after abrupt discontinuation or a significant dose reduction of a drug. Abrupt discontinuation or rapid dosage reduction of benzodiazepines or administration of flumazenil, a benzodiazepine antagonist, may precipitate acute withdrawal reactions, including seizures, which can be life-threatening. Patients at an increased risk of withdrawal adverse reactions after benzodiazepine discontinuation or rapid dosage reduction include those who take higher dosages (i.e., higher and/or more frequent doses) and those who have had longer durations of use (see WARNINGS: *Dependence and Withdrawal Reactions*).

To reduce the risk of withdrawal reactions, use a gradual taper to discontinue clonazepam tablets or reduce the dosage (see DOSAGE AND ADMINISTRATION: *Discontinuation or Dosage Reduction of clonazepam tablets* and WARNINGS: *Dependence and Withdrawal Reactions*).

Acute Withdrawal Signs and Symptoms

Acute withdrawal signs and symptoms associated with benzodiazepines have included abnormal involuntary movements, anxiety, blurred vision, depersonalization, depression, derealization, dizziness, fatigue, gastrointestinal adverse reactions (e.g., nausea, vomiting, diarrhea, weight loss, decreased appetite), headache, hyperacusis, hypertension, irritability, insomnia, memory impairment, muscle pain and stiffness, panic attacks, photophobia, restlessness, tachycardia, and tremor. More severe acute withdrawal signs and symptoms, including life-threatening reactions, have included catatonia, convulsions, delirium tremens, depression, hallucinations, mania, psychosis, seizures, and suicidality.

Protracted Withdrawal Syndrome

Protracted withdrawal syndrome associated with benzodiazepines is characterized by anxiety, cognitive impairment, depression, insomnia, formication, motor symptoms (e.g., weakness, tremor, muscle twitches), paresthesia, and tinnitus that persists beyond 4 to 6 weeks after initial benzodiazepine withdrawal. Protracted withdrawal symptoms may last weeks to more than 12 months. As a result, there may be difficulty in differentiating withdrawal symptoms from potential re-emergence or continuation of symptoms for which the benzodiazepine was being used.

Tolerance

Tolerance to clonazepam tablets may develop from continued therapy. Tolerance is a physiological state characterized by a reduced response to a drug after repeated administration (i.e., a higher dose of a drug is required to produce the same effect that was once obtained at a lower dose). Tolerance to the therapeutic effect of clonazepam tablets may develop; however, little tolerance develops to the amnestic reactions and other cognitive impairments caused by benzodiazepines.

Following the short-term treatment of patients with panic disorder in Studies 1 and 2 (see CLINICAL PHARMACOLOGY: *Clinical Trials*), patients were gradually withdrawn during a 7-week downward-titration (discontinuance) period. Overall, the discontinuance period was associated with good tolerability and a very modest clinical deterioration, without evidence of a significant rebound phenomenon. However, there are not sufficient data from adequate and well-controlled long-term clonazepam studies in patients with panic disorder to accurately estimate the risks of withdrawal symptoms and dependence that may be associated with such use.

OVERDOSAGE

Overdosage of benzodiazepines is characterized by central nervous system depression

ranging from drowsiness to coma. In mild to moderate cases, symptoms can include drowsiness, confusion, dysarthria, lethargy, hypnotic state, diminished reflexes, ataxia, and hypotonia. Rarely, paradoxical or disinhibitory reactions (including agitation, irritability, impulsivity, violent behavior, confusion, restlessness, excitement, and talkativeness) may occur. In severe overdose cases, patients may develop respiratory depression and coma. Overdosage of benzodiazepines in combination with other CNS depressants (including alcohol and opioids) may be fatal (see WARNINGS: *Abuse, Misuse, and Addiction*). Markedly abnormal (lowered or elevated) blood pressure, heart rate, or respiratory rate raise the concern that additional drugs and/or alcohol are involved in the overdose.

In managing benzodiazepine overdose, employ general supportive measures, including intravenous fluids and airway maintenance. Flumazenil, a specific benzodiazepine receptor antagonist indicated for the complete or partial reversal of the sedative effects of benzodiazepines in the management of benzodiazepine overdose, can lead to withdrawal and adverse reactions, including seizures, particularly in the context of mixed overdose with drugs that increase seizure risk (e.g., tricyclic and tetracyclic antidepressants) and in patients with long-term benzodiazepine use and physical dependency. The risk of withdrawal seizures with flumazenil use may be increased in patients with epilepsy. Flumazenil is contraindicated in patients who have received a benzodiazepine for control of a potentially life-threatening condition (e.g., status epilepticus). If the decision is made to use flumazenil, it should be used as an adjunct to, not as a substitute for, supportive management of benzodiazepine overdose. See the flumazenil injection Prescribing Information.

Consider contacting the Poison Help line (1-800-222-1222) or a medical toxicologist for additional overdose management recommendations.

DOSAGE AND ADMINISTRATION

Clonazepam is available as a tablet. The tablets should be administered with water by swallowing the tablet whole.

Seizure Disorders:

The use of multiple anticonvulsants may result in an increase of CNS depressant adverse effects. This should be considered before adding clonazepam tablets to an existing anticonvulsant regimen.

Adults:

The initial dose for adults with seizure disorders should not exceed 1.5 mg/day divided into three doses. Dosage may be increased in increments of 0.5 mg to 1 mg every 3 days until seizures are adequately controlled or until side effects preclude any further increase. Maintenance dosage must be individualized for each patient depending upon response. Maximum recommended daily dose is 20 mg.

Pediatric Patients:

Clonazepam tablets are administered orally. In order to minimize drowsiness, the initial dose for infants and children (up to 10 years of age or 30 kg of body weight) should be between 0.01 and 0.03 mg/kg/day but not to exceed 0.05 mg/kg/day given in two or three divided doses. Dosage should be increased by no more than 0.25 mg to 0.5 mg every third day until a daily maintenance dose of 0.1 to 0.2 mg/kg of body weight has been reached, unless seizures are controlled or side effects preclude further increase. Whenever possible, the daily dose should be divided into three equal doses. If doses are not equally divided, the largest dose should be given before retiring.

Geriatric Patients:

There is no clinical trial experience with clonazepam tablets in seizure disorder patients 65 years of age and older. In general, elderly patients should be started on low doses of clonazepam tablets and observed closely (see PRECAUTIONS: *Geriatric Use*).

Panic Disorder:

Adults:

The initial dose for adults with panic disorder is 0.25 mg twice daily. An increase to the target dose for most patients of 1 mg/day may be made after 3 days. The recommended dose of 1 mg/day is based on the results from a fixed dose study in which the optimal effect was seen at 1 mg/day. Higher doses of 2, 3 and 4 mg/day in that study were less effective than the 1 mg/day dose and were associated with more adverse effects. Nevertheless, it is possible that some individual patients may benefit from doses of up to a maximum dose of 4 mg/day, and in those instances, the dose may be increased in increments of 0.125 mg to 0.25 mg twice daily every 3 days until panic disorder is controlled or until side effects make further increases undesired. To reduce the inconvenience of somnolence, administration of one dose at bedtime may be desirable.

Treatment should be discontinued gradually, with a decrease of 0.125 mg twice daily every 3 days, until the drug is completely withdrawn.

There is no body of evidence available to answer the question of how long the patient treated with clonazepam should remain on it. Therefore, the physician who elects to use clonazepam tablets for extended periods should periodically reevaluate the long-term usefulness of the drug for the individual patient.

Pediatric Patients:

There is no clinical trial experience with clonazepam tablets in panic disorder patients under 18 years of age.

Geriatric Patients:

There is no clinical trial experience with clonazepam tablets in panic disorder patients 65 years of age and older. In general, elderly patients should be started on low doses of clonazepam tablets and observed closely (see PRECAUTIONS: *Geriatric Use*).

Discontinuation or Dosage Reduction of Clonazepam Tablets:

To reduce the risk of withdrawal reactions, increased seizure frequency, and status epilepticus, use a gradual taper to discontinue clonazepam tablets or reduce the dosage. If a patient develops withdrawal reactions, consider pausing the taper or increasing the dosage to the previous tapered dosage level. Subsequently decrease the dosage more slowly (see WARNINGS: *Dependence and Withdrawal Reactions* and DRUG ABUSE AND DEPENDENCE: *Dependence*).

HOW SUPPLIED

Clonazepam tablets USP 1 mg are blue, round, flat faced, beveled edge, debossed with "C 1" on one side and plain on the other. They are supplied as follows:

NDC: 70518-1521-00

NDC: 70518-1521-01

NDC: 70518-1521-02

PACKAGING: 30 in 1 BLISTER PACK

PACKAGING: 100 in 1 BOX

PACKAGING: 1 in 1 POUCH

Store at 25°C (77°F); excursions permitted to 15°C to 30°C (59°F to 86°F). [See USP Controlled Room Temperature].

Repackaged and Distributed By:

Remedy Repack, Inc.

625 Kolter Dr. Suite #4 Indiana, PA 1-724-465-8762

MEDICATION GUIDE

Clonazepam Tablets USP

(kloe-NA-za-pam)

for oral use

What is the most important information I should know about Clonazepam tablets?

- **Clonazepam tablets are a benzodiazepine medicine. Taking benzodiazepines with opioid medicines, alcohol, or other central nervous system (CNS) depressants (including street drugs) can cause severe drowsiness, breathing problems (respiratory depression), coma, and death.** Get emergency help right away if any of the following happens:
 - shallow or slowed breathing
 - breathing stops (which may lead to the heart stopping)
 - excessive sleepiness (sedation)

Do not drive or operate heavy machinery until you know how taking clonazepam tablets and opioids affects you.
- **Risk of abuse, misuse, and addiction.** There is a risk of abuse, misuse, and addiction with benzodiazepines, including clonazepam tablets, which can lead to overdose and serious side effects including coma and death.
 - **Serious side effects including coma and death have happened in people who have abused or misused benzodiazepines, including clonazepam tablets.** These serious side effects may also include delirium, paranoia, suicidal thoughts or actions, seizures, and difficulty breathing. **Call your healthcare provider or go to the nearest hospital emergency room right away if you get any of these serious side effects.**
 - **You can develop an addiction even if you take clonazepam tablets as prescribed by your healthcare provider.**
 - **Take clonazepam tablets exactly as your healthcare provider prescribed.**
 - Do not share your clonazepam tablets with other people.
 - Keep clonazepam tablets in a safe place and away from children.
- **Physical dependence and withdrawal reactions.** Clonazepam tablets can cause physical dependence and withdrawal reactions.
 - **Do not suddenly stop taking clonazepam tablets.** Stopping clonazepam tablets suddenly can cause serious and life-threatening side effects, including, unusual movements, responses, or expressions, seizures, sudden and severe mental or nervous system changes, depression, seeing or hearing things that others do not see or hear, an extreme increase in activity or talking, losing touch with reality, and suicidal thoughts or actions. **Call your healthcare provider or go to the nearest hospital emergency room right away if you get any of these symptoms.**
 - **Some people who suddenly stop benzodiazepines have symptoms that can last for several weeks to more than 12 months,** including, anxiety, trouble remembering, learning, or concentrating, depression, problems sleeping, feeling like insects are crawling under your skin, weakness, shaking, muscle twitching, burning or prickling feeling in your hands, arms, legs or feet, and ringing in your ears.
 - Physical dependence is not the same as drug addiction. Your healthcare provider can tell you more about the differences between physical dependence and drug addiction.
 - Do not take more clonazepam tablets than prescribed or take clonazepam tablets for longer than prescribed.
- **Clonazepam tablets can make you sleepy or dizzy and can slow your thinking and motor skills. This may get better over time.**
 - Do not drive, operate heavy machinery, or do other dangerous activities until you know how clonazepam tablets affect you.
 - Clonazepam tablets may cause problems with your coordination, especially when you are walking or picking things up.
- **Do not drink alcohol or take other drugs that may make you sleepy or dizzy while taking clonazepam tablets until you talk to your healthcare provider.** When taken with alcohol or drugs that cause sleepiness or dizziness, clonazepam tablets may make your sleepiness or dizziness worse.

- **Like other antiepileptic medicines, clonazepam tablets may cause suicidal thoughts or actions in a very small number of people, about 1 in 500.**

Call your healthcare provider right away if you have any of these symptoms, especially if they are new, worse, or worry you:

- thoughts about suicide or dying
- new or worse anxiety
- trouble sleeping (insomnia)
- acting on dangerous impulses
- attempts to commit suicide
- feeling agitated or restless
- new or worse irritability
- an extreme increase in activity and talking (mania)
- new or worse depression
- panic attacks
- acting aggressive, being angry, or violent
- other unusual changes in behavior or mood

How can I watch for early symptoms of suicidal thoughts and actions?

- Pay attention to any changes, especially sudden changes, in mood, behaviors, thoughts, or feelings.
- Keep all follow-up visits with your healthcare provider as scheduled.

Call your healthcare provider between visits as needed, especially if you are worried about symptoms. Suicidal thoughts or actions can be caused by things other than medicines. If you have suicidal thoughts or actions, your healthcare provider may check for other causes.

Do not stop clonazepam tablets without first talking to a healthcare provider.

- Stopping clonazepam tablets suddenly can cause serious problems. Stopping clonazepam tablets suddenly can cause seizures that will not stop (status epilepticus).

What is Clonazepam tablets?

- Clonazepam tablets are a prescription medicine used alone or with other medicines to treat:
 - certain types of seizure disorders (epilepsy) in adults and children
 - panic disorder with or without fear of open spaces (agoraphobia) in adults
- **Clonazepam tablets are a federally controlled substance (C-IV) because it contains clonazepam that can be abused or lead to dependence.** Keep clonazepam tablets in a safe place to prevent misuse and abuse. Selling or giving away clonazepam tablets may harm others, and is against the law. Tell your healthcare provider if you have ever abused or been dependent on alcohol, prescription medicines, or street drugs.

It is not known if clonazepam tablets are safe or effective in treating panic disorder in children younger than 18 years old.

Who should not take Clonazepam tablets?

Do not take clonazepam tablets if you:

- are allergic to benzodiazepines
- have significant liver disease
- have an eye disease called acute narrow angle glaucoma

Ask your healthcare provider if you are not sure if you have any of the problems listed above.

Before you take clonazepam tablets, tell your healthcare provider if you:

- have liver or kidney problems
- have lung problems (respiratory disease)
- have or have had depression, mood problems, or suicidal thoughts or behavior
- have any other medical problems
- are pregnant or plan to become pregnant.
 - Taking clonazepam tablets late in pregnancy may cause your baby to have symptoms of sedation (breathing problems, sluggishness, low muscle tone), and/or withdrawal symptoms (jitteriness, irritability, restlessness, shaking, excessive crying, feeding problems).
 - Tell your healthcare provider right away if you become pregnant or think you are

pregnant during treatment with clonazepam tablets.

- If you become pregnant while taking clonazepam tablets, talk to your healthcare provider about registering with the North American Antiepileptic Drug Pregnancy Registry. You can register by calling 1-888-233-2334. The purpose of this registry is to collect information about the safety of antiepileptic drugs during pregnancy.
- are breastfeeding or plan to breastfeed. Clonazepam can pass into breast milk.
 - Breastfeeding during treatment with clonazepam tablets may cause your baby to have sleepiness, feeding problems, and decreased weight gain.
 - Talk to your healthcare provider about the best way to feed your baby while you take clonazepam tablets.

Tell your healthcare provider about all the medicines you take, including prescription and over-the-counter medicines, vitamins, and herbal supplements.

Taking clonazepam tablets with certain other medicines can cause side effects or affect how well clonazepam tablets or the other medicines work. Do not start or stop other medicines without talking to your healthcare provider.

How should I take clonazepam tablets?

- Take clonazepam tablets exactly as your healthcare provider tells you. If you take clonazepam tablets for seizures, your healthcare provider may change the dose until you are taking the right amount of medicine to control your symptoms.
- Clonazepam is available as a tablet.
- Do not stop taking clonazepam tablets without first talking to your healthcare provider. Stopping clonazepam tablets suddenly can cause serious problems.
- Clonazepam tablets should be taken with water and swallowed whole.
- If you take too much clonazepam tablets, call your healthcare provider or local Poison Control Center right away.

What should I avoid while taking clonazepam tablets?

- Clonazepam tablets can slow your thinking and motor skills. Do not drive, operate heavy machinery, or do other dangerous activities until you know how clonazepam tablets affect you.
- Do not drink alcohol or take other medicines that may make you sleepy or dizzy while taking clonazepam tablets until you talk to your healthcare provider. When taken with alcohol or medicines that cause sleepiness or dizziness, clonazepam tablets may make your sleepiness or dizziness much worse.

What are the possible side effects of clonazepam tablets?

See **“What is the most important information I should know about clonazepam tablets?”**

Clonazepam tablets can also make your seizures happen more often or make them worse. Call your healthcare provider right away if your seizures get worse while taking clonazepam tablets.

The most common side effects of clonazepam tablets include:

- drowsiness
- problems with walking and coordination
- dizziness
- depression
- fatigue
- problems with memory

These are not all the possible side effects of clonazepam tablets. Call your doctor for medical advice about side effects. You may report side effects to FDA at 1-800-FDA-1088. You may also report side effects to the Safety Call Center at 1-866-788-3904.

How should I store clonazepam tablets?

- Store clonazepam tablets between 59°F to 86°F (15°C to 30°C)
- **Keep clonazepam tablets and all medicines out of the reach of children**

General Information about the safe and effective use of clonazepam tablets

Medicines are sometimes prescribed for purposes other than those listed in a Medication Guide. Do not use clonazepam tablets for a condition for which it was not prescribed. Do not give clonazepam tablets to other people, even if they have the same symptoms that you have. It may harm them.

You can ask your pharmacist or healthcare provider for information about clonazepam tablets that is written for health professionals.

For more information, go to www.accordhealthcare.us or call Accord Healthcare Inc. at 1-866-941-7875.

What are the ingredients in clonazepam tablets?

Active ingredient: clonazepam

Inactive ingredients:

Tablets:

- 0.5 mg tablets contain anhydrous lactose, lactose monohydrate, magnesium stearate, microcrystalline cellulose, starch (corn) and FD&C Yellow No. 6 Lake.
- 1 mg tablets contain anhydrous lactose, lactose monohydrate, magnesium stearate, microcrystalline cellulose, starch (corn) and FD&C Blue No. 2 Lake.
- 2 mg tablets contain anhydrous lactose, lactose monohydrate, magnesium stearate, microcrystalline cellulose and starch (corn)

Medication guide available at <https://www.accordhealthcare.us/medication-guides>

10 0533 5 6025625

This Medication Guide has been approved by the U.S. Food and Drug Administration.

Revised: 10/2023

Repackaged By / Distributed By: RemedyRepack Inc.

625 Kolter Drive, Indiana, PA 15701

(724) 465-8762

PRINCIPAL DISPLAY PANEL

DRUG: Clonazepam

GENERIC: clonazepam

DOSAGE: TABLET

ADMINISTRATION: ORAL

NDC: 70518-1521-0

NDC: 70518-1521-1

NDC: 70518-1521-2

COLOR: blue

SHAPE: ROUND

SCORE: No score

SIZE: 8 mm

IMPRINT: C;1

PACKAGING: 30 in 1 BLISTER PACK

PACKAGING: 100 in 1 BOX

PACKAGING: 1 in 1 POUCH

ACTIVE INGREDIENT(S):

- CLONAZEPAM 1mg in 1

INACTIVE INGREDIENT(S):

- ANHYDROUS LACTOSE
- LACTOSE MONOHYDRATE
- MAGNESIUM STEARATE
- CELLULOSE, MICROCRYSTALLINE
- STARCH, CORN
- FD&C BLUE NO. 2

Clonazepam Tablet C-IV

NDC #: **70518-1521-01**

LOT #:

Expires:

Org NDC: 16729-0137-16

MFG: Accord, Durham, NC 27703

1 mg

QTY: 100 Per Box

HD2 Caution: Federal law prohibits the transfer of this drug to any person other than the patient for whom it was prescribed.

Keep this and all medication out of the reach of children
Store at 20-25°C (68-77°F);
excursions permitted to 15-30°C (59-86°F) [See USP]



RX ONLY

Usual Dosage: See Insert.

Repackaged By:
RemedyRepack Inc.,
Indiana, PA 15701, 724.465.8762



Clonazepam Tablet C-IV

NDC #: **70518-1521-02**

LOT #:

Expires:

Org NDC: 16729-0137-16

MFG: Accord, Durham, NC 27703

1 mg

QTY: 1 Tablet

HD2 Caution: Federal law prohibits the transfer of this drug to any person other than the patient for whom it was prescribed.

Keep this and all medication out of the reach of children
Store at 20-25°C (68-77°F);
excursions permitted to 15-30°C (59-86°F) [See USP]



RX ONLY

Usual Dosage: See Insert.

Repackaged By:
RemedyRepack Inc.,
Indiana, PA 15701, 724.465.8762



CLONAZEPAM

clonazepam tablet

Product Information

Product Type	HUMAN PRESCRIPTION DRUG	Item Code (Source)	NDC:70518-1521(NDC:16729-137)
Route of Administration	ORAL	DEA Schedule	CIV

Active Ingredient/Active Moiety

Ingredient Name	Basis of Strength	Strength
CLONAZEPAM (UNII: 5PE9FDE8GB) (CLONAZEPAM - UNII:5PE9FDE8GB)	CLONAZEPAM	1 mg

Inactive Ingredients

Ingredient Name	Strength
ANHYDROUS LACTOSE (UNII: 3S5Y5LH9PMK)	
LACTOSE MONOHYDRATE (UNII: EWQ57Q8I5X)	
MAGNESIUM STEARATE (UNII: 70097M6I30)	
CELLULOSE, MICROCRYSTALLINE (UNII: OP1R32D61U)	

STARCH, CORN (UNII: O8232NY3SJ)				
FD&C BLUE NO. 2 (UNII: L06K8R7DQK)				
Product Characteristics				
Color	blue	Score	no score	
Shape	ROUND	Size	8mm	
Flavor		Imprint Code	C;1	
Contains				
Packaging				
#	Item Code	Package Description	Marketing Start Date	Marketing End Date
1	NDC:70518-1521-0	30 in 1 BLISTER PACK; Type 0: Not a Combination Product	10/11/2018	12/04/2019
2	NDC:70518-1521-1	100 in 1 BOX	10/11/2018	
2	NDC:70518-1521-2	1 in 1 POUCH; Type 0: Not a Combination Product		
Marketing Information				
Marketing Category	Application Number or Monograph Citation	Marketing Start Date	Marketing End Date	
ANDA	ANDA077147	10/11/2018		

Labeler - REMEDYREPACK INC. (829572556)

Revised: 4/2025

REMEDYREPACK INC.