

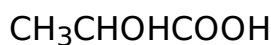
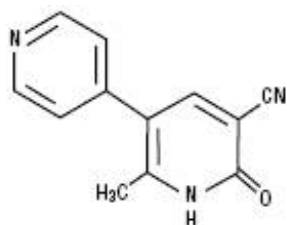
MILRINONE LACTATE- milrinone lactate injection, solution
Hikma Pharmaceuticals USA Inc.

MILRINONE LACTATE INJECTION, USP
MILRINONE LACTATE IN 5% DEXTROSE INJECTION

Rx only

DESCRIPTION

Milrinone Lactate is a member of a class of bipyridine inotropic/vasodilator agents with phosphodiesterase inhibitor activity, distinct from digitalis glycosides or catecholamines. Milrinone lactate is designated chemically as 1,6-dihydro-2-methyl-6-oxo-[3,4'-bipyridine]-5-carbonitrile lactate and has the following structure:



Milrinone is an off-white to tan crystalline compound with a molecular weight of 211.2 and a molecular formula of C₁₂H₉N₃O. It is slightly soluble in methanol, and very slightly soluble in chloroform and in water. As the lactate salt, it is stable and colorless to pale yellow in solution. Milrinone Lactate is available as sterile aqueous solutions of the lactate salt of milrinone for injection or infusion intravenously.

Sterile, single dose vials: Single dose vials of 10, 20 and 50 mL contain in each mL milrinone lactate equivalent to 1 mg milrinone and 47 mg Dextrose, Anhydrous, USP, in Water for Injection, USP. The pH is adjusted to between 3.2 and 4.0 with lactic acid or sodium hydroxide. The total concentration of lactic acid can vary between 0.95 mg/mL and 1.29 mg/mL. These vials require preparation of dilutions prior to administration to patients intravenously.

Pre-Mix Flexible Containers: The Flexible Containers provide two ready-to-use dilutions of milrinone in volumes of 100 mL and 200 mL of 5% Dextrose Injection. Each mL contains milrinone lactate equivalent to 200 mcg (0.2 mg) milrinone. The nominal concentration of lactic acid is 0.282 mg/mL. Each mL also contains 49.4 mg Dextrose Anhydrous, USP. The pH is adjusted to between 3.2 and 4.0 with lactic acid or sodium hydroxide. The flexible plastic container is comprised of polypropylene with a foil overwrap. Water can permeate the plastic into the overwrap, but the amount is insufficient to significantly affect the pre-mix solution.

CLINICAL PHARMACOLOGY

Milrinone is a positive inotrope and vasodilator, with little chronotropic activity different in structure and mode of action from either the digitalis glycosides or catecholamines.

Milrinone, at relevant inotropic and vasorelaxant concentrations, is a selective inhibitor of peak III cAMP phosphodiesterase isozyme in cardiac and vascular muscle. This inhibitory action is consistent with cAMP mediated increases in intracellular ionized calcium and contractile force in cardiac muscle, as well as with cAMP dependent contractile protein phosphorylation and relaxation in vascular muscle. Additional experimental evidence also indicates that milrinone is not a beta-adrenergic agonist nor does it inhibit sodium-potassium adenosine triphosphatase activity as do the digitalis glycosides.

Clinical studies in patients with congestive heart failure have shown that milrinone produces dose-related and plasma drug concentration-related increases in the maximum rate of increase of left ventricular pressure. Studies in normal subjects have shown that milrinone produces increases in the slope of the left ventricular pressure-dimension relationship, indicating a direct inotropic effect of the drug. Milrinone also produces dose-related and plasma concentration-related increases in forearm blood flow in patients with congestive heart failure, indicating a direct arterial vasodilator activity of the drug.

Both the inotropic and vasodilatory effects have been observed over the therapeutic range of plasma milrinone concentrations of 100 ng/mL to 300 ng/mL.

In addition to increasing myocardial contractility, milrinone improves diastolic function as evidenced by improvements in left ventricular diastolic relaxation.

The acute administration of intravenous milrinone has also been evaluated in clinical trials in excess of 1600 patients with chronic heart failure, heart failure associated with cardiac surgery, and heart failure associated with myocardial infarction. The total number of deaths, either on therapy or shortly thereafter (24 hours) was 15, less than 0.9%, few of which were thought to be drug-related.

Pharmacokinetics

Following intravenous injections of 12.5 mcg/kg to 125 mcg/kg to congestive heart failure patients, milrinone had a volume of distribution of 0.38 liters/kg, a mean terminal elimination half-life of 2.3 hours, and a clearance of 0.13 liters/kg/hr. Following intravenous infusions of 0.2 mcg/kg/min to 0.7 mcg/kg/min to congestive heart failure patients, the drug had a volume of distribution of about 0.45 liters/kg, a mean terminal elimination half-life of 2.4 hours, and a clearance of 0.14 liters/kg/hr. These pharmacokinetic parameters were not dose-dependent, and the area under the plasma concentration versus time curve following injections was significantly dose-dependent.

Milrinone has been shown (by equilibrium dialysis) to be approximately 70% bound to human plasma protein.

The primary route of excretion of milrinone in man is via the urine. The major urinary excretions of orally administered milrinone in man are milrinone (83%) and its O-glucuronide metabolite (12%). Elimination in normal subjects via the urine is rapid, with approximately 60% recovered within the first two hours following dosing and approximately 90% recovered within the first eight hours following dosing. The mean renal clearance of milrinone is approximately 0.3 liters/min, indicative of active secretion.

Pharmacodynamics

In patients with heart failure due to depressed myocardial function, milrinone produced a prompt dose and plasma concentration related increase in cardiac output and decreases in pulmonary capillary wedge pressure and vascular resistance, which were accompanied by mild-to-moderate increases in heart rate. Additionally, there is no increased effect on myocardial oxygen consumption. In uncontrolled studies, hemodynamic improvement during intravenous therapy with milrinone was accompanied by clinical symptomatic improvement, but the ability of milrinone to relieve symptoms has not been evaluated in controlled clinical trials. The great majority of patients experience improvements in hemodynamic function within 5 to 15 minutes of the initiation of therapy.

In studies in congestive heart failure patients, milrinone when administered as a loading injection followed by a maintenance infusion produced significant mean initial increases in cardiac index of 25 percent, 38 percent, and 42 percent at dose regimens of 37.5 mcg/kg/0.375 mcg/kg/min, 50 mcg/kg/0.5 mcg/kg/min, and 75 mcg/kg/0.75 mcg/kg/min, respectively. Over the same range of loading injections and maintenance infusions, pulmonary capillary wedge pressure significantly decreased by 20 percent, 23 percent, and 36 percent, respectively, while systemic vascular resistance significantly decreased by 17 percent, 21 percent, and 37 percent. Mean arterial pressure fell by up to 5 percent at the two lower dose regimens, but by 17 percent at the highest dose. Patients evaluated for 48 hours maintained improvements in hemodynamic function, with no evidence of diminished response (tachyphylaxis). A smaller number of patients have received infusions of milrinone for periods up to 72 hours without evidence of tachyphylaxis.

The duration of therapy should depend upon patient responsiveness.

Milrinone has a favorable inotropic effect in fully digitalized patients without causing signs of glycoside toxicity. Theoretically, in cases of atrial flutter/fibrillation, it is possible that milrinone may increase ventricular response rate because of its slight enhancement of AV node conduction. In these cases, digitalis should be considered prior to the institution of therapy with milrinone.

Improvement in left ventricular function in patients with ischemic heart disease has been observed. The improvement has occurred without inducing symptoms or electrocardiographic signs of myocardial ischemia.

The steady-state plasma milrinone concentrations after approximately 6 to 12 hours of unchanging maintenance infusion of 0.5 mcg/kg/min are approximately 200 ng/mL. Near maximum favorable effects of milrinone on cardiac output and pulmonary capillary wedge pressure are seen at plasma milrinone concentrations in the 150 ng/mL to 250 ng/mL range.

INDICATIONS AND USAGE

Milrinone Lactate Injection, USP and Milrinone Lactate in 5% Dextrose Injection are indicated for the short-term intravenous treatment of patients with acute decompensated heart failure. Patients receiving milrinone should be observed closely with appropriate electrocardiographic equipment. The facility for immediate treatment of potential cardiac events, which may include life threatening ventricular arrhythmias,

must be available. The majority of experience with intravenous milrinone has been in patients receiving digoxin and diuretics. There is no experience in controlled trials with infusions of milrinone for periods exceeding 48 hours.

CONTRAINDICATIONS

Milrinone Lactate Injection, USP and Milrinone Lactate in 5% Dextrose Injection are contraindicated in patients who are hypersensitive to it.

WARNINGS

Whether given orally or by continuous or intermittent intravenous infusion, milrinone has not been shown to be safe or effective in the longer (greater than 48 hours) treatment of patients with heart failure. In a multicenter trial of 1088 patients with Class III and IV heart failure, long-term oral treatment with milrinone was associated with no improvement in symptoms and an increased risk of hospitalization and death. In this study, patients with Class IV symptoms appeared to be at particular risk of life-threatening cardiovascular reactions. There is no evidence that milrinone given by long-term continuous or intermittent infusion does not carry a similar risk.

The use of milrinone both intravenously and orally has been associated with increased frequency of ventricular arrhythmias, including nonsustained ventricular tachycardia. Long-term oral use has been associated with an increased risk of sudden death. Hence, patients receiving milrinone should be observed closely with the use of continuous electrocardiographic monitoring to allow the prompt detection and management of ventricular arrhythmias.

PRECAUTIONS

General

Milrinone should not be used in patients with severe obstructive aortic or pulmonic valvular disease in lieu of surgical relief of the obstruction. Like other inotropic agents, it may aggravate outflow tract obstruction in hypertrophic subaortic stenosis.

Supraventricular and ventricular arrhythmias have been observed in the high-risk population treated. In some patients, injections of milrinone and oral milrinone have been shown to increase ventricular ectopy, including nonsustained ventricular tachycardia. The potential for arrhythmia, present in congestive heart failure itself, may be increased by many drugs or combinations of drugs. Patients receiving milrinone should be closely monitored during infusion.

Milrinone produces a slight shortening of AV node conduction time, indicating a potential for an increased ventricular response rate in patients with atrial flutter/fibrillation which is not controlled with digitalis therapy.

During therapy with milrinone, blood pressure and heart rate should be monitored and the rate of infusion slowed or stopped in patients showing excessive decreases in blood pressure.

If prior vigorous diuretic therapy is suspected to have caused significant decreases in cardiac filling pressure, milrinone should be cautiously administered with monitoring of blood pressure, heart rate, and clinical symptomatology.

There is no experience in controlled trials with infusions of milrinone for periods exceeding 48 hours. Cases of infusion site reaction have been reported with intravenous milrinone therapy (see **ADVERSE REACTIONS**). Consequently, **careful monitoring of the infusion site should be maintained** to avoid possible extravasation.

Use in Acute Myocardial Infarction

No clinical studies have been conducted in patients in the acute phase of post myocardial infarction. Until further clinical experience with this class of drugs is gained, milrinone is not recommended in these patients.

Laboratory Tests

Fluid And Electrolytes

Fluid and electrolyte changes and renal function should be carefully monitored during therapy with milrinone. Improvement in cardiac output with resultant diuresis may necessitate a reduction in the dose of diuretic. Potassium loss due to excessive diuresis may predispose digitalized patients to arrhythmias. Therefore, hypokalemia should be corrected by potassium supplementation in advance of or during use of milrinone.

Drug Interactions

No untoward clinical manifestations have been observed in limited experience with patients in whom milrinone was used concurrently with the following drugs: digitalis glycosides; lidocaine, quinidine; hydralazine, prazosin; isosorbide dinitrate, nitroglycerin; chlorthalidone, furosemide, hydrochlorothiazide, spironolactone; captopril; heparin, warfarin, diazepam, insulin; and potassium supplements.

Chemical Interactions

There is an immediate chemical interaction which is evidenced by the formation of a precipitate when furosemide is injected into an intravenous line of an infusion of milrinone. Therefore, furosemide should not be administered in intravenous lines containing milrinone.

Carcinogenesis, Mutagenesis, Impairment of Fertility

Twenty-four months of oral administration of milrinone to mice at doses up to 40 mg/kg/day (about 50 times the human oral therapeutic dose in a 50 kg patient) was unassociated with evidence of carcinogenic potential. Neither was there evidence of carcinogenic potential when milrinone was orally administered to rats at doses up to 5 mg/kg/day (about 6 times the human oral therapeutic dose) for twenty-four months or at 25 mg/kg/day (about 30 times the human oral therapeutic dose) for up to 18 months in males and 20 months in females. Whereas the Chinese Hamster Ovary Chromosome Aberration Assay was positive in the presence of a metabolic activation system, results from the Ames Test, the Mouse Lymphoma Assay, the Micronucleus Test, and the *in vivo* Rat Bone Marrow Metaphase Analysis indicated an absence of mutagenic potential.

In reproductive performance studies in rats, milrinone had no effect on male or female fertility at oral doses up to 32 mg/kg/day.

Animal Toxicity

Oral and intravenous administration of toxic dosages of milrinone to rats and dogs resulted in myocardial degeneration/fibrosis and endocardial hemorrhage, principally affecting the left ventricular papillary muscles. Coronary vascular lesions characterized by periarterial edema and inflammation have been observed in dogs only. The myocardial/endocardial changes are similar to those produced by beta-adrenergic receptor agonists such as isoproterenol, while the vascular changes are similar to those produced by minoxidil and hydralazine. Doses within the recommended clinical dose range (up to 1.13 mg/kg/day) for congestive heart failure patients have not produced significant adverse effects in animals.

Pregnancy

Oral administration of milrinone to pregnant rats and rabbits during organogenesis produced no evidence of teratogenicity at dose levels up to 40 mg/kg/day and 12 mg/kg/day, respectively. Milrinone did not appear to be teratogenic when administered intravenously to pregnant rats at doses up to 3 mg/kg/day (about 2.5 times the maximum recommended clinical intravenous dose) or pregnant rabbits at doses up to 12 mg/kg/day, although an increased resorption rate was apparent at both 8 mg/kg/day and 12 mg/kg/day (intravenous) in the latter species. There are no adequate and well-controlled studies in pregnant women. Milrinone should be used during pregnancy only if the potential benefit justifies the potential risk to the fetus.

Nursing Mothers

Caution should be exercised when milrinone is administered to nursing women, since it is not known whether it is excreted in human milk.

Pediatric Use

Safety and effectiveness in pediatric patients have not been established.

Use in Elderly Patients

There are no special dosage recommendations for the elderly patient. Ninety percent of all patients administered milrinone in clinical studies were within the age range of 45 to 70 years, with a mean age of 61 years. Patients in all age groups demonstrated clinically and statistically significant responses. No age-related effects on the incidence of adverse reactions have been observed. Controlled pharmacokinetic studies have not disclosed any age-related effects on the distribution and elimination of milrinone.

ADVERSE REACTIONS

Cardiovascular Effects

In patients receiving milrinone in Phase II and III clinical trials, ventricular arrhythmias were reported in 12.1%: Ventricular ectopic activity, 8.5%; nonsustained ventricular tachycardia, 2.8%; sustained ventricular tachycardia, 1% and ventricular fibrillation, 0.2%

(2 patients experienced more than one type of arrhythmia). Holter recordings demonstrated that in some patients injection of milrinone increased ventricular ectopy, including nonsustained ventricular tachycardia. Life-threatening arrhythmias were infrequent and when present have been associated with certain underlying factors such as preexisting arrhythmias, metabolic abnormalities (e.g., hypokalemia), abnormal digoxin levels and catheter insertion. Milrinone was not shown to be arrhythmogenic in an electrophysiology study. Supraventricular arrhythmias were reported in 3.8% of the patients receiving milrinone. The incidence of both supraventricular and ventricular arrhythmias has not been related to the dose or plasma milrinone concentration.

Other cardiovascular adverse reactions include hypotension, 2.9% and angina/chest pain, 1.2%.

In the post-marketing experience, there have been rare cases of “torsades de pointes” reported.

CNS Effects

Headaches, usually mild to moderate in severity, have been reported in 2.9% of patients receiving milrinone.

Other Effects

Other adverse reactions reported, but not definitely related to the administration of milrinone include hypokalemia, 0.6%; tremor, 0.4%; and thrombocytopenia, 0.4%.

Isolated spontaneous reports of bronchospasm and anaphylactic shock have been received; and in the post-marketing experience, liver function test abnormalities and skin reactions such as rash have been reported.

Post-Marketing Adverse Event Reports

In addition to adverse events reported from clinical trials, the following events have been reported from worldwide post-marketing experience with milrinone:

Isolated spontaneous reports of bronchospasm and anaphylactic shock.

Liver function test abnormalities and skin reactions such as rash.

Administration site conditions: Infusion site reaction.

To report SUSPECTED ADVERSE REACTIONS, contact Hikma Pharmaceuticals USA Inc. at 1-877-233-2001 or the FDA at 1-800-FDA-1088 or www.fda.gov/medwatch.

OVERDOSAGE

Doses of milrinone may produce hypotension because of its vasodilator effect. If this occurs, administration of milrinone should be reduced or temporarily discontinued until the patient's condition stabilizes. No specific antidote is known, but general measures for circulatory support should be taken.

DOSAGE AND ADMINISTRATION

Milrinone Lactate in 5% Dextrose Injection should not be used for administering a loading

dose. The information regarding loading doses for milrinone is for 1 mg/mL vial only. A loading dose of Milrinone Lactate Injection (1 mg [base]/mL) should be administered followed by a continuous infusion (maintenance dose) according to the following guidelines:

LOADING DOSE — 50 mcg/kg: Administer slowly over 10 minutes

The table below shows the loading dose in milliliters (mL) of milrinone (1 mg/mL) by patient body weight (kg).

Loading Dose (mL) Using 1 mg/mL Concentration

	Patient Body Weight (kg)									
kg	30	40	50	60	70	80	90	100	110	120
mL	1.5	2	2.5	3	3.5	4	4.5	5	5.5	6

The loading dose may be given undiluted, but diluting to a rounded total volume of 10 or 20 mL (see Maintenance Dose for diluents) may simplify the visualization of the injection rate.

MAINTENANCE DOSE

	Infusion Rate	Total Daily Dose (24 hours)	
Minimum	0.375 mcg/kg/min	0.59 mg/kg	
Standard	0.50 mcg/kg/min	0.77 mg/kg	Administer as a continuous intravenous infusion
Maximum	0.75 mcg/kg/min	1.13 mg/kg	

Milrinone drawn from vials should be diluted prior to maintenance dose administration. The diluents that may be used are 0.45% Sodium Chloride Injection, USP; 0.9% Sodium Chloride Injection, USP; or 5% Dextrose Injection, USP. The table below shows the volume of diluent in milliliters (mL) that must be used to achieve 200 mcg/mL concentration for infusion, and the resultant total volumes.

Desired Infusion Concentration mcg/mL	Milrinone 1 mg/mL (mL)	Diluent (mL)	Total Volume (mL)
200	10	40	50
200	20	80	100

The infusion rate should be adjusted according to hemodynamic and clinical response. Patients should be closely monitored. In controlled clinical studies, most patients showed an improvement in hemodynamic status as evidenced by increases in cardiac output and reductions in pulmonary capillary wedge pressure.

Note: See "**Dosage Adjustment in Renally Impaired Patients.**" Dosage may be titrated to the maximum hemodynamic effect and should not exceed 1.13 mg/kg/day.

Duration of therapy should depend upon patient responsiveness.

The maintenance dose in mL/hr by patient body weight (kg) may be determined by reference to the following table.

Note: Milrinone Lactate in 5% Dextrose Injection supplied in 100 mL and 200 mL Flexible Containers (200 mcg/mL in 5% Dextrose Injection) need not be diluted prior to use.

Milrinone Infusion Rate(mL/hr) Using 200 mcg/mL Concentration										
Maintenance Dose (mcg/kg/min)	Patient Body Weight (kg)									
	30	40	50	60	70	80	90	100	110	120
0.375	3.4	4.5	5.6	6.8	7.9	9	10.1	11.3	12.4	13.5
0.4	3.6	4.8	6	7.2	8.4	9.6	10.8	12	13.2	14.4
0.5	4.5	6	7.5	9	10.5	12	13.5	15	16.5	18
0.6	5.4	7.2	9	10.8	12.6	14.4	16.2	18	19.8	21.6
0.7	6.3	8.4	10.5	12.6	14.7	16.8	18.9	21	23.1	25.2
0.75	6.8	9	11.3	13.5	15.8	18	20.3	22.5	24.8	27

When administering milrinone lactate by continuous infusion, it is advisable to use a calibrated electronic infusion device.

The Flexible Container has a concentration of milrinone equivalent to 200 mcg/mL in 5% Dextrose Injection and is more convenient to use than dilutions prepared from the vials. To use the Flexible Container, tear the overwrap at the notch and remove the Pre-Mix solution container. Squeeze the container firmly to check for leaks. Discard the container if leaks are found since the sterility of the product could be affected. Do not add supplementary medication.

To prepare the container for administration of milrinone intravenously, use aseptic techniques.

1. The flow control clamp of the administration set is closed.
2. The cover of the outlet port at the bottom of the container is removed.
3. Noting the full directions on the administration set carton, the piercing pin of the set is inserted into the port with a twisting motion until it is firmly sealed.
4. The container is suspended on the hanger.
5. The drop chamber is squeezed and released to establish the fill level.
6. The flow control clamp is opened to expel air from the set and then closed.
7. The set is attached to the venipuncture device, primed, and if not indwelling, the venipuncture is performed.
8. The rate of administration is controlled with the flow control clamp. **WARNING - DO NOT USE IN SERIES CONNECTIONS.** Caution: Do not use plastic containers in series connections. Such use could result in air embolism due to residual air being drawn from the primary container before administration of the fluid from the secondary container is complete.

Intravenous drug products should be inspected visually and should not be used if particulate matter or discoloration is present.

Dosage Adjustment in Renally Impaired Patients

Data obtained from patients with severe renal impairment (creatinine clearance = 0 to 30 mL/min) but without congestive heart failure have demonstrated that the presence of renal impairment significantly increases the terminal elimination half-life of milrinone. Reductions in infusion rate may be necessary in patients with renal impairment. For patients with clinical evidence of renal impairment, the recommended infusion rate can be obtained from the following table:

Creatinine Clearance (mL/min/1.73 m ²)	Infusion Rate (mcg/kg/min)
5	0.20
10	0.23
20	0.28
30	0.33
40	0.38
50	0.43

HOW SUPPLIED

Milrinone Lactate Injection, USP is supplied as 10 mL single dose vials in a box of 10, NDC 0143-9710-10, or box of 25, NDC 0143-9710-25; as 20 mL single dose vials in a box of 10, NDC 0143-9709-10; as a 50 mL single dose vial in a box of 1, NDC 0143-9708-01, or box of 10, NDC 0143-9708-10, containing a sterile, clear, colorless to pale yellow solution. Each mL contains milrinone lactate equivalent to 1 mg milrinone.

Milrinone Lactate in 5% Dextrose Injection in Flexible Containers are supplied as 100 mL (200 mcg/mL) in 5% Dextrose Injection single units, NDC 0143-9719-10; as 200 mL (200 mcg/mL) in 5% Dextrose Injection single units, NDC 0143-9718-10.

Store at 20° to 25°C (68° to 77°F) [See USP Controlled Room Temperature]. Avoid freezing.

Exposure of pharmaceutical products to heat should be minimized. Avoid excessive heat.

Brief exposure of Flexible Containers up to 40°C (104°F) does not adversely affect the product.

Manufactured by:

HIKMA FARMACÊUTICA (PORTUGAL), S.A.

Estrada do Rio da Mó, 8, 8A e 8B – Fervença – 2705-906 Terrugem SNT, PORTUGAL

Distributed by:

Hikma Pharmaceuticals USA Inc.

Berkeley Heights, NJ 07922

Revised: 10/2020

PIN238-WES/3

PRINCIPAL DISPLAY PANEL

NDC 0143-**9709**-01 Rx only

Milrinone

Lactate Injection, USP

20 mg per 20 mL*

(1 mg/mL)

For Intravenous use ONLY

20 mL Single Dose Vial

NDC 0143-**9709**-01 Rx only

Milrinone
Lactate Injection, USP

20 mg per 20 mL*
(1 mg/mL)

For Intravenous use ONLY
20 mL Single Dose Vial

*Each mL contains milrinone lactate equivalent to 1 mg milrinone and 47 mg Dextrose Anhydrous, USP, in Water for Injection, USP. pH adjusted between 3.2 and 4.0 with lactic acid or sodium hydroxide. The total concentration of lactic acid can vary between 0.95 mg/mL and 1.29 mg/mL.

Usual Dosage: See package insert.
Discard unused portion after initial use.
Preservative Free.
Store at 20° to 25°C (68° to 77°F) [See USP Controlled Room Temperature]. Avoid freezing.

Mfd. by HIKMA FARMACÊUTICA (PORTUGAL), S.A.
Dist. by Hikma Pharmaceuticals USA Inc.
Berkeley Heights, NJ 07922

(01) 30001439709015

Lot:
Exp:

NDC 0143-**9709**-10 Rx only

Milrinone

Lactate Injection, USP

20 mg per 20 mL*

(1 mg/mL)

For Intravenous use ONLY

Preservative Free

10 x 20 mL Single Dose Vials

To open - Cut seal along dotted line.

PLB791-WES/3

NDC 0143-9709-10

Rx only

Milrinone

Lactate Injection, USP

20 mg per 20 mL*
(1 mg/mL)

For Intravenous use ONLY

Preservative Free

10 x 20 mL Single Dose Vials

*Each mL contains milrinone lactate equivalent to 1 mg milrinone and 47 mg Dextrose Anhydrous, USP, in Water for Injection, USP. pH adjusted between 3.2 and 4.0 with lactic acid or sodium hydroxide. The total concentration of lactic acid can vary between 0.95 mg/mL and 1.29 mg/mL.

Usual Dosage: See package insert.

Discard unused portion after initial use.

Store at 20° to 25°C (68° to 77°F) [See USP Controlled Room Temperature].

Avoid freezing.

Distributed by Hikma
Berkeley Heights, NJ 07922

hikma.



(01)00301439709107

PRINCIPAL DISPLAY PANEL

NDC 0143-9708-01 Rx only

Milrinone

Lactate Injection, USP

50 mg per 50 mL*

(1 mg/mL)

For Intravenous use ONLY

50 mL Single Dose Vial

NDC 0143-9708-01 Rx only

Milrinone

Lactate Injection, USP

50 mg per 50 mL*
(1 mg/mL)

For Intravenous use ONLY

50 mL Single Dose Vial

*Each mL contains milrinone lactate equivalent to 1 mg milrinone and 47 mg Dextrose Anhydrous, USP, in Water for Injection, USP. pH adjusted between 3.2 and 4.0 with lactic acid or sodium hydroxide. The total concentration of lactic acid can vary between 0.95 mg/mL and 1.29 mg/mL.

Usual Dosage: See package insert.

Discard unused portion after initial use.

Preservative Free.

Store at 20° to 25°C (68° to 77°F) [See USP Controlled Room Temperature]. Avoid freezing.

Mfd. by HIKMA FARMACÉUTICA (PORTUGAL), S.A.
Dist. by Hikma Pharmaceuticals USA Inc.
Berkeley Heights, NJ 07922



(01)00301439708018

PLB600-WES/3

Lot:

Exp:

NDC 0143-9708-10 Rx only

Milrinone

Lactate Injection, USP

50 mg per 50 mL*

(1 mg/mL)

For Intravenous use ONLY

Preservative Free

10 x 50 mL Single Dose Vials



NDC 0143-**9708**-25 Rx only

Milrinone

Lactate Injection, USP

50 mg per 50 mL*

(1 mg/mL)

For Intravenous use ONLY

Preservative Free

1 x 50 mL Single Dose Vial



PRINCIPAL DISPLAY PANEL

NDC 0143-**9719**-01 Rx only

Single Dose Flexible Container

Milrinone Lactate

in 5% Dextrose Injection

20 mg per 100 mL

(200 mcg/mL)

Sterile, Nonpyrogenic

NDC 0143-9719-01

Rx only

Single Dose Flexible Container

MILRINONE LACTATE
in 5% Dextrose Injection

20 mg per 100 mL

(200 mcg/mL)

Sterile, Nonpyrogenic

EACH mL CONTAINS MILRINONE LACTATE EQUIVALENT TO 0.2 mg MILRINONE, 0.282 mg LACTIC ACID, 49.4 mg DEXTROSE ANHYDROUS, USP IN WATER FOR INJECTION, USP. THE pH IS ADJUSTED TO BETWEEN 3.2 AND 4.0 WITH LACTIC ACID OR SODIUM HYDROXIDE. NO PRESERVATIVE IS ADDED.

EACH FLEXIBLE CONTAINER IS FOR ONE INFUSION ONLY. USE ONLY IF SOLUTION IS CLEAR, COLORLESS TO PALE YELLOW. DO NOT USE IF THE FLEXIBLE CONTAINER LEAKS (SQUEEZE FIRMLY) OR SHOWS SIGNS OF DAMAGE. DISCARD UNUSED PORTION.

Usual Dosage: SEE PACKAGE INSERT.

MUST NOT BE USED IN SERIES CONNECTIONS.

STORE AT 20° TO 25°C (68° TO 77°F) [SEE USP CONTROLLED ROOM TEMPERATURE].

Mfd. by: HIKMA FARMACÊUTICA (PORTUGAL), S.A.
Dist. by: Hikma Pharmaceuticals USA Inc.
Berkeley Heights, NJ 07922



NDC 0143-9719-01

PBAG100PL4/2

NDC 0143-**9719**-01 TO OPEN-TEAR AT NOTCH Rx only

Milrinone Lactate

in 5% Dextrose Injection

20 mg per 100 mL (200 mcg/mL)

Single Dose Flexible Container Sterile Nonpyrogenic

NDC 0143-9719-01

TO OPEN-TEAR AT NOTCH

Rx only

Milrinone Lactate in 5% Dextrose Injection

20 mg per 100 mL (200 mcg/mL)

Single Dose Flexible Container

Sterile Nonpyrogenic

Each mL contains milrinone lactate equivalent to 0.2 mg milrinone, 0.282 mg lactic acid, 49.4 mg Dextrose Anhydrous, USP in Water for Injection, USP. The pH is adjusted to between 3.2 and 4.0 with lactic acid or sodium hydroxide. No preservative is added. Each flexible container is for one infusion only. Use only if solution is clear, colorless to pale yellow. Discard unused portion. The overwrap is a moisture barrier. Do not remove unit from the overwrap until ready for use.

After removing overwrap, check for minute leaks by squeezing container firmly.

If leaks are found, discard unit as sterility may be impaired.

Usual Dosage: See package insert.

Store at 20° to 25°C (68° to 77°F) [See USP Controlled Room Temperature].

Protect from freezing. Avoid excessive heat. See insert.

MUST NOT BE USED IN SERIES CONNECTIONS.



NDC 0143-9719-01

Mfd. by: HIKMA FARMACÊUTICA (PORTUGAL) S.A.

Dist. by: Hikma Pharmaceuticals USA Inc.

Berkeley Heights, NJ 07922

PLB554-WES/5

PRINCIPAL DISPLAY PANEL

NDC 0143-9718-01 Rx only

Single Dose Flexible Container

Milrinone Lactate

in 5% Dextrose Injection

40 mg per 200 mL

(200 mcg/mL)

Sterile, Nonpyrogenic

NDC 0143-9718-01

Rx only

Single Dose Flexible Container

MILRINONE LACTATE
in 5% Dextrose Injection

40 mg per 200 mL
(200 mcg/mL)

Sterile, Nonpyrogenic

EACH mL CONTAINS MILRINONE LACTATE EQUIVALENT TO 0.2 mg MILRINONE, 0.282 mg LACTIC ACID, 49.4 mg DEXTROSE ANHYDROUS, USP IN WATER FOR INJECTION, USP. THE pH IS ADJUSTED TO BETWEEN 3.2 AND 4.0 WITH LACTIC ACID OR SODIUM HYDROXIDE. NO PRESERVATIVE IS ADDED.

EACH FLEXIBLE CONTAINER IS FOR ONE INFUSION ONLY. USE ONLY IF SOLUTION IS CLEAR, COLORLESS TO PALE YELLOW. DO NOT USE IF THE FLEXIBLE CONTAINER LEAKS (SQUEEZE FIRMLY) OR SHOWS SIGNS OF DAMAGE. DISCARD UNUSED PORTION.

Usual Dosage: SEE PACKAGE INSERT.

MUST NOT BE USED IN SERIES CONNECTIONS.

STORE AT 20° TO 25°C (68° TO 77°F) [SEE USP CONTROLLED ROOM TEMPERATURE].

Mfd. by: HIKMA FARMACÊUTICA (PORTUGAL), S.A.

Dist. by: Hikma Pharmaceuticals USA Inc.
Berkeley Heights, NJ 07922



NDC 0143-9718-01

PBAG250FL5/2

NDC 0143-**9718**-01 TO OPEN-TEAR AT NOTCH Rx only

Milrinone Lactate

in 5% Dextrose Injection

40 mg per 200 mL

(200 mcg/mL)

Single Dose Flexible Container

Sterile Nonpyrogenic

NDC 0143-9718-01

TO OPEN - TEAR AT NOTCH

Rx only

Milrinone Lactate in 5% Dextrose Injection

**40 mg per 200 mL
(200 mcg/mL)**

Single Dose Flexible Container**Sterile Nonpyrogenic**

Each mL contains milrinone lactate equivalent to 0.2 mg milrinone, 0.282 mg lactic acid, 49.4 mg Dextrose Anhydrous, USP in Water for Injection, USP. The pH is adjusted to between 3.2 and 4.0 with lactic acid or sodium hydroxide. No preservative is added. Each flexible container is for one infusion only.

Use only if solution is clear, colorless to pale yellow. Discard unused portion. The overwrap is a moisture barrier. Do not remove unit from overwrap until ready for use. After removing the overwrap, check for minute leaks by squeezing container firmly. If leaks are found, discard unit as sterility may be impaired.

Usual Dosage: See package insert.

Store at 20° to 25°C (68° to 77°F) [See USP Controlled Room Temperature].

Protect from freezing. Avoid excessive heat. See insert.

MUST NOT BE USED IN SERIES CONNECTIONS.

hikma.

Mfd. by: HIKMA FARMACÉUTICA (PORTUGAL) S.A.

Dist. by: Hikma Pharmaceuticals USA Inc.

Berkeley Heights, NJ 07922



PLB561-WES/5

NDC 0143-9718-01

PRINCIPAL DISPLAY PANEL

NDC 0143-9710-01 Rx only

Milrinone

Lactate Injection, USP

10 mg per 10 mL***(1 mg/mL)****For Intravenous use ONLY**

10 mL Single Dose Vial

NDC 0143-9710-01 Rx only

Milrinone
Lactate Injection, USP

10 mg per 10 mL*
(1 mg/mL)

For Intravenous use ONLY
10 mL Single Dose Vial

*Each mL contains milrinone lactate equivalent to 1 mg milrinone and 47 mg Dextrose Anhydrous, USP, in Water for Injection, USP. pH adjusted between 3.2 and 4.0 with lactic acid or sodium hydroxide. The total concentration of lactic acid can vary between 0.95 mg/mL and 1.29 mg/mL.
Usual Dosage: See package insert.
Discard unused portion after initial use.
Preservative Free.
Store at 20° to 25°C (68° to 77°F) [See USP Controlled Room Temperature]. Avoid freezing.

Mtd. by HIKMA FARMACÊUTICA (PORTUGAL), S.A.
Dist. by Hikma Pharmaceuticals USA Inc.
Berkeley Heights, NJ 07922

(01) X10001439710011

PLB790-WES/3

Lot:
Exp:

NDC 0143-9710-10 Rx only

Milrinone

Lactate Injection, USP

10 mg per 10 mL*

(1 mg/mL)

For Intravenous use ONLY

Preservative Free

10 x 10 mL Single Dose Vials

To open - Cut seal along dotted line.

PLB790-WES/4

NDC 0143-9710-10 Rx only

Milrinone
Lactate Injection, USP

10 mg per 10 mL*
(1 mg/mL)

For Intravenous use ONLY
Preservative Free
10 x 10 mL Single Dose Vials

*Each mL contains milrinone lactate equivalent to 1 mg milrinone and 47 mg Dextrose Anhydrous, USP, in Water for Injection, USP. pH adjusted between 3.2 and 4.0 with lactic acid or sodium hydroxide. The total concentration of lactic acid can vary between 0.95 mg/mL and 1.29 mg/mL.
Usual Dosage: See package insert.
Discard unused portion after initial use.
Store at 20° to 25°C (68° to 77°F) [See USP Controlled Room Temperature]. Avoid freezing.

Distributed by Hikma
Berkeley Heights, NJ 07922

hikma.

3 01439 71010 3

NDC 0143-9710-25 Rx only

Milrinone

Lactate Injection, USP

10 mg per 10 mL* (1 mg/mL)

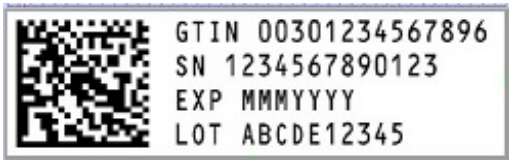
For Intravenous use ONLY

Preservative Free

25 x 10 mL Single Dose Vials



SERIALIZATION IMAGE



MILRINONE LACTATE

milrinone lactate injection, solution

Product Information

Product Type	HUMAN PRESCRIPTION DRUG	Item Code (Source)	NDC:0143-9710
Route of Administration	INTRAVENOUS		

Active Ingredient/Active Moiety

Ingredient Name	Basis of Strength	Strength
MILRINONE LACTATE (UNII: 9K8XR81MO8) (MILRINONE - UNII:JU9YAX04C7)	MILRINONE	1 mg in 1 mL

Inactive Ingredients

Ingredient Name	Strength
ANHYDROUS DEXTROSE (UNII: 5SL0G7R00K)	47 mg in 1 mL
LACTIC ACID (UNII: 33X04XA5AT)	1 mg in 1 mL
SODIUM HYDROXIDE (UNII: 55X04QC32I)	
WATER (UNII: 059QF0KO0R)	

Packaging

#	Item Code	Package Description	Marketing Start Date	Marketing End Date
1	NDC:0143-9710-25	25 in 1 BOX	12/03/2010	
1	NDC:0143-9710-10	10 mL in 1 VIAL; Type 0: Not a Combination Product		

Marketing Information

Marketing Category	Application Number or Monograph Citation	Marketing Start Date	Marketing End Date
ANDA	ANDA077966	12/03/2010	

MILRINONE LACTATE

milrinone lactate injection, solution

Product Information

Product Type	HUMAN PRESCRIPTION DRUG	Item Code (Source)	NDC:0143-9709
Route of Administration	INTRAVENOUS		

Active Ingredient/Active Moiety

Ingredient Name	Basis of Strength	Strength
MILRINONE LACTATE (UNII: 9K8XR81MO8) (MILRINONE - UNII:JU9YAX04C7)	MILRINONE	1 mg in 1 mL

Inactive Ingredients

Ingredient Name	Strength
ANHYDROUS DEXTROSE (UNII: 5SL0G7R00K)	47 mg in 1 mL
WATER (UNII: 059QF0KO0R)	
LACTIC ACID (UNII: 33X04XA5AT)	1 mg in 1 mL
SODIUM HYDROXIDE (UNII: 55X04QC32I)	

Packaging

#	Item Code	Package Description	Marketing Start Date	Marketing End Date
1	NDC:0143-9709-	20 mL in 1 VIAL; Type 0: Not a Combination	12/03/2010	

10	Product	12/03/2010	
Marketing Information			
Marketing Category	Application Number or Monograph Citation	Marketing Start Date	Marketing End Date
ANDA	ANDA077966	12/03/2010	

MILRINONE LACTATE

milrinone lactate injection, solution

Product Information			
Product Type	HUMAN PRESCRIPTION DRUG	Item Code (Source)	NDC:0143-9708
Route of Administration	INTRAVENOUS		

Active Ingredient/Active Moiety		
Ingredient Name	Basis of Strength	Strength
MILRINONE LACTATE (UNII: 9K8XR81MO8) (MILRINONE - UNII:JU9YAX04C7)	MILRINONE	1 mg in 1 mL

Inactive Ingredients	
Ingredient Name	Strength
ANHYDROUS DEXTROSE (UNII: 5SLOG7R0OK)	47 mg in 1 mL
WATER (UNII: 059QF0KO0R)	
LACTIC ACID (UNII: 33X04XA5AT)	1 mg in 1 mL
SODIUM HYDROXIDE (UNII: 55X04QC32I)	

Packaging				
#	Item Code	Package Description	Marketing Start Date	Marketing End Date
1	NDC:0143-9708-10	10 in 1 BOX	12/03/2010	
1	NDC:0143-9708-01	50 mL in 1 VIAL; Type 0: Not a Combination Product		

Marketing Information			
Marketing Category	Application Number or Monograph Citation	Marketing Start Date	Marketing End Date
ANDA	ANDA077966	12/03/2010	

Labeler - Hikma Pharmaceuticals USA Inc. (001230762)

Establishment

Name	Address	ID/FEI	Business Operations
HIKMA FARMACEUTICA (PORTUGAL), S.A		452742943	manufacture(0143-9710, 0143-9709, 0143-9708)

Revised: 12/2023

Hikma Pharmaceuticals USA Inc.