

OMLONTI- omidenepag isopropyl solution/ drops Santen Incorporated

HIGHLIGHTS OF PRESCRIBING INFORMATION

These highlights do not include all the information needed to use OMLONTI[®] safely and effectively. See full prescribing information for OMLONTI[®].

OMLONTI[®] (omidenepag isopropyl ophthalmic solution) 0.002%, for topical ophthalmic use

Initial U.S. Approval: 2022

INDICATIONS AND USAGE

Omlonti (omidenepag isopropyl ophthalmic solution) 0.002%, is a relatively selective prostaglandin E2 (EP2) receptor agonist, indicated for the reduction of elevated intraocular pressure (IOP) in patients with open-angle glaucoma or ocular hypertension. (1)

DOSAGE AND ADMINISTRATION

The recommended dosage is one drop in the affected eye(s) once daily in the evening. (2.1)

DOSAGE FORMS AND STRENGTHS

Ophthalmic solution containing 0.002% (0.02 mg/mL) of omidenepag isopropyl. (3)

CONTRAINDICATIONS

None (4)

WARNINGS AND PRECAUTIONS

- Pigmentation (5.1)
- Eyelash changes (5.2)
- Ocular Inflammation (5.3)
- Macular Edema (5.4)

ADVERSE REACTIONS

The most common adverse reactions with incidence $\geq 1\%$ are conjunctival hyperemia (9%), photophobia (5%), vision blurred (4%), dry eye (3%), instillation site pain (3%), eye pain (2%), ocular hyperemia (2%), punctate keratitis (2%), headache (2%), eye irritation (1%), and visual impairment (1%). (6.1)

To report SUSPECTED ADVERSE REACTIONS, contact Santen at 1-855-7-SANTEN (855-772-6836) or FDA at 1-800-FDA-1088 or www.fda.gov/medwatch.

See 17 for PATIENT COUNSELING INFORMATION.

Revised: 9/2022

FULL PRESCRIBING INFORMATION: CONTENTS*

1 INDICATIONS AND USAGE

2 DOSAGE AND ADMINISTRATION

2.1 Recommended Dosage

2.2 Administration Instructions

3 DOSAGE FORMS AND STRENGTHS

4 CONTRAINDICATIONS

5 WARNINGS AND PRECAUTIONS

5.1 Pigmentation

5.2 Eyelash Changes

5.3 Ocular Inflammation

5.4 Macular Edema

5.5 Risk of Contamination and Potential Injury to the Eye

6 ADVERSE REACTIONS

6.1 Clinical Trials Experience

8 USE IN SPECIFIC POPULATIONS

8.1 Pregnancy

8.2 Lactation

8.3 Females and Males of Reproductive Potential

8.4 Pediatric Use

8.5 Geriatric Use

11 DESCRIPTION

12 CLINICAL PHARMACOLOGY

12.1 Mechanism of Action

12.3 Pharmacokinetics

13 NONCLINICAL TOXICOLOGY

13.1 Carcinogenesis, Mutagenesis, Impairment of Fertility

13.2 Animal Toxicology and/or Pharmacology

14 CLINICAL STUDIES

16 HOW SUPPLIED/STORAGE AND HANDLING

17 PATIENT COUNSELING INFORMATION

* Sections or subsections omitted from the full prescribing information are not listed.

FULL PRESCRIBING INFORMATION

1 INDICATIONS AND USAGE

Omlonti (omidinenepag isopropyl ophthalmic solution) 0.002%, is indicated for the reduction of elevated intraocular pressure (IOP) in patients with open-angle glaucoma or ocular hypertension.

2 DOSAGE AND ADMINISTRATION

2.1 Recommended Dosage

The recommended dosage is one drop in the affected eye(s) once daily in the evening.

2.2 Administration Instructions

Gently shake the bottle prior to administration. If more than one topical ophthalmic drug is being used, the drugs should be administered at least five (5) minutes apart. Contact lenses should be removed prior to the administration of Omlonti, and may be reinserted 15 minutes after administration [*see Patient Counseling Information (17)*].

3 DOSAGE FORMS AND STRENGTHS

Omidinenepag isopropyl ophthalmic solution: 0.002% (0.02 mg/mL)

4 CONTRAINDICATIONS

None.

5 WARNINGS AND PRECAUTIONS

5.1 Pigmentation

Omlonti (omidenepag isopropyl ophthalmic solution) 0.002%, is a prodrug of omidenepag, a relatively selective EP2 receptor agonist. Pigmentation is expected to increase as long as omidenepag isopropyl ophthalmic solution is administered. The pigmentation change is due to increased melanin content in the melanocytes rather than to an increase in the number of melanocytes. After discontinuation of Omlonti, pigmentation of the iris is likely to be permanent, while pigmentation of the periorbital tissue and eyelash changes are likely to be reversible in most patients. Patients who receive prostaglandin analogs, including Omlonti, should be informed of the possibility of increased pigmentation, including permanent changes. The long-term effects of increased pigmentation are not known.

Iris color change may not be noticeable for several months to years. Typically, the brown pigmentation around the pupil spreads concentrically towards the periphery of the iris and the entire iris or parts of the iris become more brownish. Neither nevi nor freckles of the iris appear to be affected by treatment. While treatment with Omlonti (omidenepag isopropyl ophthalmic solution), 0.002% can be continued in patients who develop noticeably increased iris pigmentation, these patients should be examined regularly [*see Patient Counseling Information (17)*].

5.2 Eyelash Changes

Omlonti may gradually change eyelashes and vellus hair in the treated eye. These changes include increased length, thickness, and the number of lashes or hairs. Eyelash changes are usually reversible upon discontinuation of treatment.

5.3 Ocular Inflammation

Ocular inflammation has been reported in patients taking Omlonti. Omlonti should be used with caution in patients with active ocular inflammation, including iritis/uveitis.

5.4 Macular Edema

Macular edema, including cystoid macular edema, has been reported during clinical trials in patients with pseudophakia receiving Omlonti. Omlonti should be used with caution in aphakic patients, in pseudophakic patients, or in patients with known risk factors for macular edema.

5.5 Risk of Contamination and Potential Injury to the Eye

Advise patients to avoid touching the tip of the bottle to the eye or any surface, as this may contaminate the solution. Advise patients to not touch the tip to their eye to avoid the potential for injury to the eye.

6 ADVERSE REACTIONS

The following clinically significant adverse reactions are described elsewhere in the labeling:

- Pigmentation [see *Warnings and Precautions (5.1)*]
- Eyelash Changes [see *Warnings and Precautions (5.2)*]
- Ocular Inflammation [see *Warnings and Precautions (5.3)*]
- Macular Edema [see *Warnings and Precautions (5.4)*]

6.1 Clinical Trials Experience

Because clinical trials are conducted under widely varying conditions, adverse reaction rates observed in the clinical trials of a drug cannot be directly compared to rates in the clinical trials of another drug and may not reflect the rates observed in practice.

The data described below reflect exposure to Omlonti in 600 patients for up to 3 months. The most common adverse reactions with incidence $\geq 1\%$ are conjunctival hyperemia (9%), photophobia (5%), vision blurred (4%), dry eye (3%), instillation site pain (3%), eye pain (2%), ocular hyperemia (2%), punctate keratitis (2%), headache (2%), eye irritation (1%), and visual impairment (1%).

8 USE IN SPECIFIC POPULATIONS

8.1 Pregnancy

Risk Summary

There are no available data on the use of Omlonti in pregnant women. In animal reproduction studies, subcutaneous administration of omidenepag isopropyl to pregnant rabbits throughout the period of organogenesis produced fetal skeletal anomalies at a dose of 24 times the clinical dose, based on estimated plasma C_{max} . Omidenepag isopropyl was not teratogenic in rats when administered subcutaneously at 1 mg/kg/day, 2,452 times the clinical dose, based on estimated plasma C_{max} (see *Data*).

Data

Animal Data

An embryofetal development study was conducted in pregnant rabbits administered omidenepag isopropyl once daily by subcutaneous injection at 0.008, 0.08, or 0.8 mg/kg/day from gestation Day 6 to 18, a period which covers implantation and the period of organogenesis in rabbits. Fetal skeletal anomalies (thoracic misaligned centrum and hemivertebra, fused sternebra, absent rib) were observed at 0.008 mg/kg/day (24 times the maximum recommended human ocular dose [MRHOD], based on estimated plasma C_{max}). Additional fetal skeletal anomalies were observed at 0.08 mg/kg (absent thoracic arch, fused rib) and 0.8 mg/kg (misaligned and misshapen cervical vertebrae), corresponding to 256 times and 3,696 times the MRHOD based on estimated plasma C_{max} , respectively. Increases in preimplantation loss and post-implantation loss were observed at 0.8 mg/kg/day. The rabbit maternal, No Observed Adverse Effect Level [NOAEL] was 0.8 mg/kg/day.

An embryofetal development study was conducted in pregnant rats administered omidenepag isopropyl once daily by subcutaneous injection at 0.01, 0.1, or 1 mg/kg/day

from gestation Day 6 to 17, to target the period of organogenesis. Omidenepag isopropyl was not found to have any effect on embryo-fetal development in rats at up to 1 mg/kg/day (2,452 times the MRHOD based on estimated plasma C_{max}). The rat maternal NOAEL was 1 mg/kg/day. In a pre/postnatal development study, treatment of pregnant rats with omidenepag isopropyl subcutaneously from gestation day 6 to lactation day 20 at 0.01, 0.1, or 1 mg/kg/day resulted in no adverse effects. The NOAEL for pre- and postnatal development was 1 mg/kg/day (2,452 times the MRHOD based on estimated plasma C_{max}).

8.2 Lactation

Risk Summary

There are no data on the presence of Omlonti in human milk, the effects on the breastfed infant, or the effects on milk production. However, systemic exposure to omidenepag following topical ocular administration is low [see *Clinical Pharmacology* (12.3)], and it is not known whether measurable levels of omidenepag would be present in maternal milk following topical ocular administration. The developmental and health benefits of breastfeeding should be considered along with the mother's clinical need for Omlonti and any unknown potential adverse effects on the breast-fed child from Omlonti.

8.3 Females and Males of Reproductive Potential

Infertility

There are no data on the effects of Omlonti on human fertility. No impairment of fertility has been reported in animals receiving omidenepag isopropyl subcutaneously at doses up to 2,452 times the clinical dose based on estimated plasma C_{max} [see *Nonclinical Toxicology* (13.1)] .

8.4 Pediatric Use

The safety and effectiveness of Omlonti have not been established in pediatric patients.

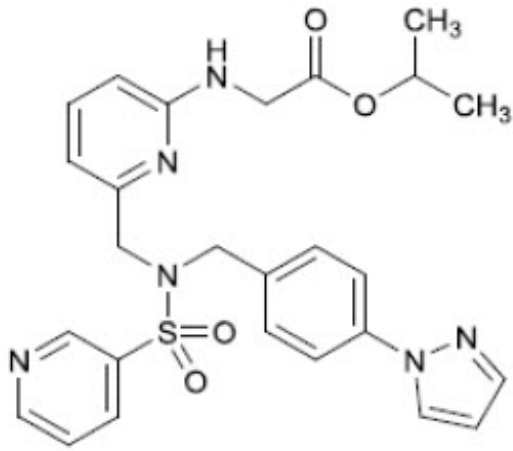
8.5 Geriatric Use

No overall differences in safety or effectiveness have been observed between elderly and other adult patients.

11 DESCRIPTION

Omlonti (omidenepag isopropyl ophthalmic solution) 0.002%, contains the prodrug form of the active omidenepag, a relatively selective prostaglandin EP2 receptor agonist with ocular hypotensive activity. Omidenepag isopropyl is a white to light brown crystal or crystalline powder and practically insoluble in water. Omidenepag isopropyl's chemical name is Glycine, N-[6-[[[4-(1H-pyrazol-1-yl)phenyl]methyl](3-pyridinylsulfonyl)amino]methyl]-2-pyridinyl]-, 1-methylethyl ester and has the following structure:

Structural Formula



Formula of the free base: C₂₆H₂₈N₆O₄S. Molecular weight: 520.61

Omlonti appears as a clear, colorless solution. It is supplied as a sterile, isotonic, buffered aqueous solution of omidenepeg isopropyl with a target pH of 5.8 and an osmolality of approximately 285 mOsmol/kg.

Each mL of Omlonti contains: Active: 0.02 mg of omidenepeg isopropyl.

Preservative: 0.005% benzalkonium chloride.

Inactive ingredients: glycerin, polyoxyl 35 castor oil, sodium citrate, citric acid monohydrate, edetate disodium, sodium hydroxide and/or hydrochloric acid (to adjust pH), and water for injection.

12 CLINICAL PHARMACOLOGY

12.1 Mechanism of Action

Omidenepeg is a relatively selective EP₂ receptor agonist which decreases intraocular pressure (IOP). The exact mechanism of action is unknown at this time. Elevated IOP represents a major risk factor for glaucomatous field loss. The higher the level of IOP, the greater the likelihood of optic nerve damage and visual field loss.

12.3 Pharmacokinetics

Absorption

Omlonti is absorbed through the cornea where prodrug omidenepeg isopropyl is hydrolyzed to become biologically active metabolite, omidenepeg. After once daily ocular administration of one drop of omidenepeg isopropyl 0.0025% eye drops to both eyes in humans for 7 days, plasma concentrations of omidenepeg reached C_{max} at 10-15 minutes. Systemic exposure was similar between days 1 and 7, indicating no systemic accumulation.

Elimination

Metabolism

After topical ocular administration, omidenepeg isopropyl is rapidly metabolized in the eye to omidenepeg (active moiety) by carboxylesterase-1. The pharmacologically active

form, omidenepag is further metabolized by liver through oxidation, *N*-dealkylation, glucuronidation, sulfate conjugation or taurine conjugation.

Excretion

In rats, 0.03% ¹⁴C-Omlonti was instilled in both eyes as a single dose (5 mcL/eye, 3 mcg/animal). By 168 hours after ocular instillation, 89% of the administered radioactive dose had been excreted. Specifically, 83% and 4% of the administered radioactive dose were excreted in the feces and urine, respectively, and radioactivity in expired air was below the lower limit of quantitation.

13 NONCLINICAL TOXICOLOGY

13.1 Carcinogenesis, Mutagenesis, Impairment of Fertility

Carcinogenesis

Lifetime rodent studies have not been performed to evaluate the carcinogenic potential of omidenepag isopropyl or omidenepag.

In rats dosed by subcutaneous injection daily for 26 weeks, nephroblastoma and a spermatic cord tumor were found at 0.003 mg/kg/day (33 times the RHOD based on the estimated area under the curve [AUC]). Mammary adenocarcinoma and pituitary pars distalis adenomas were observed at 0.03 mg/kg/day (319 fold the RHOD based on the estimated AUC).

Mutagenesis

Omidenepag was not mutagenic in the bacterial reverse mutation (Ames) test and the *in vivo* mouse micronucleus test. Omidenepag isopropyl was positive (mutagenic and clastogenic) without metabolic activation in the *in vitro* mouse lymphoma forward mutation assay. [see *Clinical Pharmacology (12.3)*].

Impairment of Fertility

In a rat fertility and early embryonic development study, daily subcutaneous doses of omidenepag isopropyl did not affect male or female fertility at doses up to 1 mg/kg/day (2,452 times the MRHOD based on estimated plasma C_{max}).

The rabbit embryofetal development study administered omidenepag isopropyl to pregnant rabbits beginning on gestation day 6, covering the period of implantation [see *Use in Specific Populations (8.1)*]. Preimplantation losses were observed at 0.8 mg/kg/day (3,696 times the MRHOD based on estimated plasma C_{max}). The NOAEL for rabbit preimplantation loss was 0.08 mg/kg/day (256 times the MRHOD based on estimated plasma C_{max}) [see *Use in Specific Populations (8.1)*].

13.2 Animal Toxicology and/or Pharmacology

Nasal cavity respiratory epithelium metaplasia was observed in cynomolgus monkeys receiving unilateral topical ocular instillations of omidenepag isopropyl at 0.003% (0.9 mcg/eye) [1.07 fold the MRHOD, based on ocular dose comparison]. In a 13-week monkey study, the 0.9 mcg/eye dose was associated with nasal cavity respiratory epithelial metaplasia, and increased nasal cavity goblet cell respiratory epithelium mucosa. In a 39-week monkey study, the 0.9 mcg/eye dose was associated with

increased incidence and severity of nasal cavity respiratory epithelium metaplasia. These findings were present in both the treated side and untreated contralateral side, and they were also observed in the vehicle group [see Adverse Reactions (6)] .

14 CLINICAL STUDIES

Omlonti was evaluated in three randomized and controlled clinical trials in subjects with open-angle glaucoma or ocular hypertension with average baseline IOP of 24-26 mm Hg. The double-masked treatment duration was 3 months in all 3 studies. The third study included a 9-month open-label treatment period following the 3-month double-masked treatment period.

In the three studies, IOP reductions were observed for all treatment arms. In the Omlonti arm, the reduction in IOP ranged from 5-7 mm Hg across all three studies. The corresponding reductions for the timolol and latanoprost arms were 5-7 mm Hg and 6-8 mm Hg, respectively.

16 HOW SUPPLIED/STORAGE AND HANDLING

Omlonti (omidinenepag isopropyl ophthalmic solution) 0.002%, is supplied as a 2.5 mL sterile solution in 5 mL white low density polyethylene bottles with linear low density polyethylene dropper tips, high density polyethylene screw caps and tamper-evident low density polyethylene overcaps.

NDC 65086-002-05

Storage: Store unopened bottle (s) in the refrigerator at 2°C to 8°C (36°F to 46°F). Once a bottle is opened for use, it can be stored for up to 31 days at up to 30°C (86°F).

17 PATIENT COUNSELING INFORMATION

Advise the patient to read the FDA-approved patient labeling (Instructions for Use).

Potential for Pigmentation

Patients should be advised about the potential for increased brown pigmentation of the iris, which may be permanent. Patients should also be informed about the possibility of eyelid skin darkening, which is usually reversible after discontinuation of Omlonti.

Potential for Eyelash Changes

Patients should also be informed of the possibility of eyelash and vellus hair changes in the treated eye during treatment with Omlonti. These changes may result in a disparity between eyes in length, thickness, pigmentation, number of eyelashes or vellus hairs, and/or direction of eyelash growth. Eyelash changes are usually reversible upon discontinuation of treatment.

Handling the Container

Advise patients to avoid touching the tip of the bottle to the eye or any surface, as this may contaminate the solution. Advise patients to not touch the tip to their eye to avoid the potential for injury to the eye. The product should be refrigerated before opening, and once it is opened, it can be stored at room temperature for up to 31 days . [see

How Supplied/Storage and Handling (16)] .

When to Seek Physician Advice

Advise patients that if they develop a new ocular condition (e.g., trauma, infection, or inflammation), experience a sudden decrease in visual acuity, have ocular surgery, or develop any ocular reactions, particularly conjunctivitis and eyelid reactions, they should immediately seek their physician's advice concerning the continued use of Omlonti.

Use with Contact Lenses

Contact lenses should be removed prior to administration of the solution. Lenses may be reinserted 15 minutes after administration.

Use with Other Ophthalmic Drugs

Advise patients that if more than one topical ophthalmic drug is being used, the drugs should be administered at least five (5) minutes apart [*see Dosage and Administration (2)*] .

Manufactured for: Santen Inc.

Manufactured by: Woodstock Sterile Solutions, Inc.

Distributed by:

Santen Inc.

6401 Hollis Street, Suite 125

Emeryville, CA 94608

United States

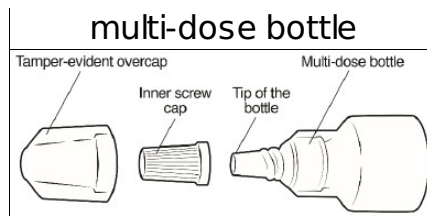
INSTRUCTIONS FOR USE

**OMLONTI® [om lon'tee]
(omidenepag isopropyl ophthalmic solution) 0.002%
for topical ophthalmic use**

Read this Instructions for Use before you start using Omlonti and each time you get refills. There may be new and updated information. This leaflet does not take the place of talking to your healthcare provider about your medical condition or your treatment.



Parts of your Omlonti



Important information you need to know before using Omlonti

- Omlonti is for use in the eye.
- Use Omlonti exactly as your healthcare provider tells you to use it.
- After you remove the Omlonti multi-dose bottle from the carton, make sure the tamper-evident overcap is not broken. If the tamper-evident overcap is broken, Omlonti may not be safe for you to use.
- If you use Omlonti with other eye medicines, you should wait at least 5 minutes between using Omlonti and the other medicines.
- If you wear contact lenses, remove your contact lenses before using Omlonti. You should wait 15 minutes after using Omlonti before placing your contact lenses back in your eye.
- Call your healthcare provider right away if you develop new eye problems including: an eye injury, eye infection, eye pain, light sensitivity, blurry vision, decreased vision, swelling and redness of the eye, problems with your eyelids, changes in the appearance of your eyes, headache, or eye surgery.
- If you develop blurred vision or light sensitivity after using Omlonti, **do not** drive or operate heavy machinery until the symptoms disappear.
- Omlonti can cause color changes in your iris and eyelid and may change the length and color of your eyelashes.

Using Omlonti

Follow **Step 1** to **Step 11** each time you use Omlonti. Ask your healthcare provider for help if you do not understand how to use Omlonti.

<p>Step 1. Wash your hands thoroughly with soap and water. If you cannot wash your hands, you can clean your hands using hand sanitizer.</p>	<p>The illustration shows a pair of hands being washed under a running faucet. Water is shown splashing over the hands, which are held together in a typical hand-washing motion.</p>
<p>Step 2. Turn the tamper-evident overcap to the left to open the multi-dose bottle.</p>	<p>The illustration shows a pair of hands holding the multi-dose bottle. One hand is turning the tamper-evident overcap to the left, as indicated by a curved arrow. The other hand is holding the bottle steady.</p>

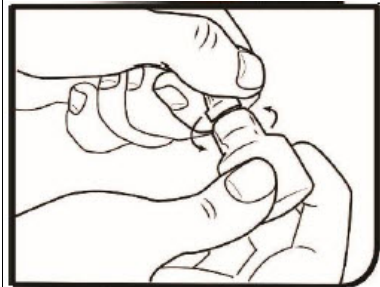
Step 3. Remove the tamper-evident overcap and throw it away.



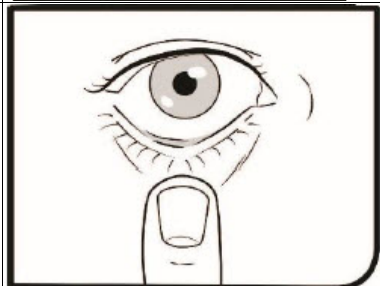
Step 4. Gently shake the bottle.



Step 5. Turn the inner screw cap to the left to remove it. **Do not** throw the inner screw cap away.



Step 6. Pull down your lower eyelid with a clean finger. The medicine will go into the space between your lower eyelid and your eye.



Step 7. Tilt your head back and look up.



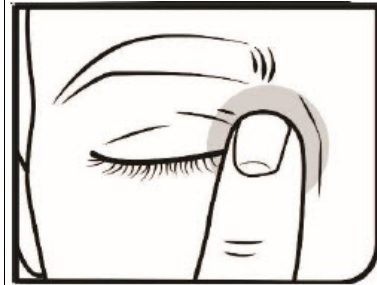
Step 8. Gently squeeze the multi-dose bottle to release 1 drop of the medicine in your eye. **Do not** let the tip of the multi-dose bottle touch your eye or any other surfaces. If a drop misses your eye, try again.



Step 9. Blink a few times so that the medicine spreads across your eye.



Step 10. After using Omlonti, gently close your eyelid and press the corner of your eye closest to your nose for 2 minutes.



Step 11. Repeat **Step 6** to **Step 10** for your other eye if you need to use drops in both eyes.

Storing Omlonti

- Store unopened Omlonti in the refrigerator between 36°F to 46°F (2°C to 8°C).
- After opening, store Omlonti up to 31 days at room temperature between 68°F to 86°F (20° to 30°C).
- **Do not** use Omlonti if the expiration date (EXP YYYY-MM) on the outer carton and multi-dose bottle have passed. The expiration date is the last day of that month.
- After removing the tamper-evident overcap, keep the multi-dose bottle closed with the inner screw cap on to avoid contamination.
- **Keep Omlonti and all medicines out of the reach of children.**

Additional Information

- If you have questions about Omlonti, talk to your healthcare provider, go to the Santen's website (<https://www.santen.com/>), or call Santen Medical Information: 855-7-SANTEN (855-772-6836).

Distributed by:

Santen Incorporated
6401 Hollis St., Suite 125
Emeryville, CA 94608

This Instructions for Use has been approved by the U.S. Food and Drug Administration.
Approved: 9/2022

PRINCIPAL DISPLAY PANEL - 2.5 mL Bottle Carton

NDC 65086-002-05

Santen

OMLONTI®
(omidenedepag isopropyl
ophthalmic solution) 0.002%

FOR TOPICAL USE

IN THE EYES

STERILE
RX ONLY

2.5 mL



OMLONTI

omidenepag isopropyl solution/ drops

Product Information

Product Type	HUMAN PRESCRIPTION DRUG	Item Code (Source)	NDC:65086-002	
Route of Administration	OPHTHALMIC			
Active Ingredient/Active Moiety				
Ingredient Name		Basis of Strength	Strength	
OMIDENEPAG ISOPROPYL (UNII: G0G0H52U6K) (OMIDENEPAG - UNII:Z95F9F9LU4)		OMIDENEPAG ISOPROPYL	0.02 mg in 1 mL	
Inactive Ingredients				
Ingredient Name			Strength	
TRISODIUM CITRATE DIHYDRATE (UNII: B22547B95K)				
CITRIC ACID MONOHYDRATE (UNII: 2968PHW8QP)				
POLYOXYL 35 CASTOR OIL (UNII: 6D4M1DAL6O)				
BENZALKONIUM CHLORIDE (UNII: F5UM2KM3W7)				
EDETATE DISODIUM (UNII: 7FLD91C86K)				
GLYCERIN (UNII: PDC6A3C0OX)				
SODIUM HYDROXIDE (UNII: 55X04QC32I)				
HYDROCHLORIC ACID (UNII: QTT17582CB)				
WATER (UNII: 059QF0KO0R)				
Packaging				
#	Item Code	Package Description	Marketing Start Date	Marketing End Date
1	NDC:65086-002-05	1 in 1 CARTON	09/23/2022	
1		2.5 mL in 1 BOTTLE, PLASTIC; Type 2: Prefilled Drug Delivery Device/System (syringe, patch, etc.)		
2	NDC:65086-002-01	1 in 1 CARTON	09/23/2022	
2		2.5 mL in 1 BOTTLE, PLASTIC; Type 2: Prefilled Drug Delivery Device/System (syringe, patch, etc.)		
Marketing Information				
Marketing Category	Application Number or Monograph Citation		Marketing Start Date	Marketing End Date
NDA	NDA215092		09/23/2022	

Labeler - Santen Incorporated (869321331)