

GVOKE HYPOPEN 1 MG AUTO-INJECTOR- glucagon injection, solution injection, solution

GVOKE HYPOPEN 0.5 MG AUTO-INJECTOR- glucagon injection, solution injection, solution

GVOKE PFS 1 MG PRE-FILLED SYRINGE- glucagon injection, solution injection, solution

GVOKE PFS 0.5 MG PRE-FILLED SYRINGE- glucagon injection, solution injection, solution

GVOKE KIT VIAL- glucagon injection, solution injection, solution

GVOKE KIT- glucagon injection, solution injection, solution

Xeris Pharmaceuticals, Inc.

HIGHLIGHTS OF PRESCRIBING INFORMATION

These highlights do not include all the information needed to use GVOKE and GVOKE VialDx safely and effectively. See full prescribing information for GVOKE and GVOKE VialDx.

GVOKE (glucagon) injection, for subcutaneous use

GVOKE VialDx (glucagon) injection, for intravenous use

Initial U.S. Approval: 1960

RECENT MAJOR CHANGES

Indications and Usage (1.1, 1.2)

Dosage and Administration (2.1, 2.2)

Contraindications (4)

Warnings and Precautions (5.6, 5.7, 5.8)

03/2025

INDICATIONS AND USAGE

- GVOKE is an antihypoglycemic agent indicated for subcutaneous use for the treatment of severe hypoglycemia in adult and pediatric patients aged two years and older with diabetes (1.1)
- GVOKE VialDx is a gastrointestinal motility inhibitor indicated for intravenous use as a diagnostic aid during radiologic examinations to temporarily inhibit movement of the gastrointestinal tract in adult patients (1.2)

DOSAGE AND ADMINISTRATION

Dosage and Administration of GVOKE for Subcutaneous Use to Treat Severe Hypoglycemia in Adult and Pediatric Patients Aged 2 Years and Older with Diabetes (2.1)

- Important Administration Instructions
- Administer GVOKE HypoPen, GVOKE PFS, or GVOKE Kit subcutaneously. These three presentations are referred to as GVOKE in this labeling
- Administer GVOKE according to the printed instructions on the foil pouch label, carton, or the Instructions for Use.
- Visually inspect GVOKE prior to administration. The solution should appear clear and colorless to pale yellow.
- Administer GVOKE subcutaneously in the lower abdomen, outer thigh, or outer upper arm.
- Call for emergency assistance immediately after administering the dose.
- If there has been no response after 15 minutes, may administer an additional dose from a new HypoPen, GVOKE PFS, or GVOKE Kit while waiting for emergency assistance.
- When the patient has responded to GVOKE, give oral carbohydrates.
- Do not attempt to reuse GVOKE. Each GVOKE device or vial contains a single dose of glucagon. Do not reuse and discard any unused portion.
- Recommended Dosage
- Recommended dose for adult and pediatric patients aged 12 years of age and older is 1 mg.
- Recommended dose for adult and pediatric patients aged 12 years of age and older is 1 mg.
- The recommended dose for pediatric patients aged 2 to less than 12 years of age who weigh:
 - o Less than 45 kg, is 0.5 mg
 - o 45 kg or greater, is 1 mg

Dosage and Administration of GVOKE VialDx for Intravenous Use as a Diagnostic Aid in Adults (2.2)

- GVOKE VialDx is only for intravenous use under medical supervision.

- The recommended diagnostic dose for relaxation of the stomach, duodenal bulb, duodenum, and small bulb is 0.2 mg to 0.5 mg; the recommended dose to relax the colon is 0.5 mg to 0.75 mg.
- See the Full Prescribing Information for administration instructions for GVOKE VialDx.

----- **DOSAGE FORMS AND STRENGTHS** -----

Subcutaneous Injection:

- 0.5 mg/0.1 mL single-dose prefilled autoinjector (GVOKE HypoPen) (3)
- 1 mg/0.2 mL single-dose prefilled autoinjector (GVOKE HypoPen) (3)
- 1 mg/0.2 mL single-dose prefilled syringe (GVOKE PFS) (3)
- 1 mg/0.2 mL single-dose vial and syringe kit (GVOKE Kit)(3)

Intravenous Injection

- 1 mg/0.2 mL single-dose vial (GVOKE VialDx)(3)

----- **CONTRAINDICATIONS** -----

- Pheochromocytoma (4)
- Insulinoma (4)
- Prior hypersensitivity reaction to glucagon or to any of the excipients (4)
- Glucagonoma when used as a diagnostic aid (4)

----- **WARNINGS AND PRECAUTIONS** -----

Substantial Increase in Blood Pressure in Patients with Pheochromocytoma: Contraindicated in patients with pheochromocytoma because glucagon may stimulate the release of catecholamines from the tumor. (5.1)

- *Hypoglycemia in Patients with Insulinoma:* In patients with insulinoma, administration may produce an initial increase in blood glucose; however, glucagon may stimulate exaggerated insulin release from an insulinoma and cause hypoglycemia. If a patient develops symptoms of hypoglycemia after a dose of GVOKE or GVOKE VialDx, give glucose orally or intravenously. (5.2)
- *Serious Hypersensitivity Reactions:* Serious hypersensitivity reactions have been reported with glucagon products, including generalized rash, and in some cases anaphylactic shock with breathing difficulties, and hypotension.(5.3)
- *Lack of Efficacy with Subcutaneous Use for Severe Hypoglycemia in Patients with Decreased Hepatic Glycogen:* Patients with insufficient hepatic stores of glycogen may not respond to GVOKE for subcutaneous use for the treatment of severe hypoglycemia. Insufficient hepatic stores of glycogen may be present in conditions such as states of starvation, or in patients with adrenal insufficiency or chronic hypoglycemia. (5.4)
- *Necrolytic Migratory Erythema (NME):* a skin rash, has been reported postmarketing following continuous glucagon infusion and resolved with discontinuation of the glucagon. GVOKE and GVOKE VialDx are not approved for continuous infusion. Should NME occur, consider whether the benefits of continuous glucagon infusion outweigh the risks. (5.5)
- *Hyperglycemia with Intravenous Use as a Diagnostic Aid in Patients with Diabetes Mellitus:* GVOKE VialDx in patients with diabetes mellitus may cause hyperglycemia. Monitor patients with diabetes for changes in blood glucose levels during treatment and treat hyperglycemia if indicated. (5.6)
- *Blood Pressure and Heart Rate Increases with Intravenous Use as a Diagnostic Aid in Patients with Cardiac Disease:* GVOKE VialDx may increase myocardial oxygen demand, blood pressure, and pulse rate. Cardiac monitoring is recommended in patients with cardiac disease during use of GVOKE VialDx as a diagnostic aid, and an increase in blood pressure and pulse rate may require therapy. (5.7)
- *Hypoglycemia in Patients with Glucagonoma with Intravenous Use as a Diagnostic Aid:* GVOKE VialDx administered to patients with glucagonoma may cause secondary hypoglycemia. Test patients suspected of having glucagonoma for blood levels of glucagon prior to treatment and monitor for changes in blood glucose levels during treatment. (5.8)

----- **ADVERSE REACTIONS** -----

- Most common adverse reactions (incidence 2% or greater) reported for GVOKE were:
 - o Adults—nausea, vomiting, injection site edema raised 1 mm or greater, and headache (6.1)
 - o Pediatric Patients—nausea, hypoglycemia, vomiting, headache, abdominal pain, hyperglycemia, injection site discomfort and reaction, and urticaria (6.1)
- Most common adverse reactions (incidence 5 % or greater) reported for GVOKE VialDx were nausea, dysgeusia, headache, dizziness and hot flush (6.1)

To report SUSPECTED ADVERSE REACTIONS, contact Xeris Pharmaceuticals, Inc. at toll-free 1-877-937-4737 or FDA at 1-800-FDA-1088 or www.fda.gov/medwatch

----- **DRUG INTERACTIONS** -----

- *Beta-blockers:* GVOKE- or GVOKE VialDx-treated patients taking concomitant beta-blockers may have a

transient increase in pulse and blood pressure. (7)

- *Indomethacin*: In patients taking concomitant indomethacin, GVOKE may lose its ability to raise glucose or may produce hypoglycemia. (7)
- *Anticholinergic drugs*: Concomitant use of anticholinergic drugs with GVOKE VialDx for use as a diagnostic aid is not recommended. (7)
- *Warfarin*: GVOKE and GVOKE VialDx may increase the anticoagulant effect of warfarin. (7)
- *Insulin*: Monitor blood glucose when GVOKE VialDx is used as a diagnostic aid in patients receiving insulin. (7)

See 17 for PATIENT COUNSELING INFORMATION and FDA-approved patient labeling for GVOKE.

Revised: 4/2025

FULL PRESCRIBING INFORMATION: CONTENTS*

1 INDICATIONS AND USAGE

1.1 Severe Hypoglycemia in Adult and Pediatric Patients Aged 2 Years and Older with Diabetes

1.2 Diagnostic Aid in Adults

2 DOSAGE AND ADMINISTRATION

2.1 Dosage and Administration of GVOKE for Subcutaneous Use to Treat Severe Hypoglycemia in Adult and Pediatric Patients Aged 2 Years and Older with Diabetes

2.2 Dosage and Administration of GVOKE VialDx for Intravenous Use as a Diagnostic Aid in Adults

3 DOSAGE FORMS AND STRENGTHS

4 CONTRAINDICATIONS

5 WARNINGS AND PRECAUTIONS

5.1 Substantial Increase in Blood Pressure in Patients with Pheochromocytoma

5.2 Hypoglycemia in Patients with Insulinoma

5.3 Serious Hypersensitivity Reactions

5.4 Lack of Efficacy with Subcutaneous Use for Severe Hypoglycemia in Patients with Decreased Hepatic Glycogen

5.5 Necrolytic Migratory Erythema

5.6 Hyperglycemia with Intravenous Use as a Diagnostic Aid in Patients with Diabetes Mellitus

5.7 Blood Pressure and Heart Rate Increases with Intravenous Use as a Diagnostic Aid in Patients with Cardiac Disease

5.8 Hypoglycemia in Patients with Glucagonoma with Intravenous Use as a Diagnostic Aid

6 ADVERSE REACTIONS

6.1 Clinical Trials Experience

6.2 Postmarketing Experience

7 DRUG INTERACTIONS

8 USE IN SPECIFIC POPULATIONS

8.1 Pregnancy

8.2 Lactation

8.4 Pediatric Use

8.5 Geriatric Use

10 OVERDOSAGE

11 DESCRIPTION

12 CLINICAL PHARMACOLOGY

12.1 Mechanism of Action

12.2 Pharmacodynamics

12.3 Pharmacokinetics

13 NONCLINICAL TOXICOLOGY

13.1 Carcinogenesis, Mutagenesis, Impairment of Fertility

14 CLINICAL STUDIES

14.1 Adult Patients with Type 1 Diabetes Mellitus for the Treatment of Severe Hypoglycemia

14.2 Pediatric Patients Aged 2 Years and Older with Type 1 Diabetes Mellitus for the Treatment of Severe Hypoglycemia

16 HOW SUPPLIED/STORAGE AND HANDLING

* Sections or subsections omitted from the full prescribing information are not listed.

FULL PRESCRIBING INFORMATION

1 INDICATIONS AND USAGE

1.1 Severe Hypoglycemia in Adult and Pediatric Patients Aged 2 Years and Older with Diabetes

GVOKE is indicated for subcutaneous use for the treatment of severe hypoglycemia in adult and pediatric patients aged two and older with diabetes.

1.2 Diagnostic Aid in Adults

GVOKE VialDx is indicated for intravenous use as a diagnostic aid during radiologic examinations to temporarily inhibit movement of the gastrointestinal tract in adult patients.

2 DOSAGE AND ADMINISTRATION

2.1 Dosage and Administration of GVOKE for Subcutaneous Use to Treat Severe Hypoglycemia in Adult and Pediatric Patients Aged 2 Years and Older with Diabetes

Important Administration Instructions

To treat severe hypoglycemia in adult and pediatric patients aged 2 years and older with diabetes, administer GVOKE HypoPen, GVOKE PFS, or GVOKE Kit subcutaneously. These three presentations are only for subcutaneous use and are referred to as GVOKE in this labeling.

- For GVOKE HypoPen or GVOKE PFS: Do not open foil pouch until ready to administer.
- For GVOKE Kit: Store in original carton until ready to administer.

Instruct patients and their caregivers on the signs and symptoms of severe hypoglycemia. Because severe hypoglycemia requires the help of others to recover, instruct the patient to inform those around them about GVOKE and its Instructions for Use. Administer GVOKE subcutaneously as soon as possible when severe hypoglycemia is recognized.

Instruct the patient or caregiver to read the Instructions for Use at the time they receive

a prescription for GVOKE.

- Visually inspect GVOKE prior to administration. The solution should be clear, colorless to pale yellow
- Withdraw the correct dose (see below for dosage recommendations).
- Administer subcutaneously in the lower abdomen, outer thigh, or outer upper arm, according to the printed instructions on the foil pouch label, carton, or the Instructions for Use.
- Call for emergency assistance immediately after administering the dose.
- If there has been no response after 15 minutes, an additional dose from a new GVOKE HypoPen, GVOKE PFS, or GVOKE Kit may be administered while waiting for emergency assistance.
- When the patient has responded to GVOKE, give oral carbohydrates to restore the liver glycogen and prevent recurrence of hypoglycemia.
- Each GVOKE HypoPen, GVOKE PFS, or GVOKE Kit product contains a single dose of glucagon. Do not reuse and discard any unused portion.

Recommended Dosage in Adult and Pediatric Patients Aged 12 Years and Older to Treat Severe Hypoglycemia

To treat severe hypoglycemia in patients 12 years of age and older with diabetes, use GVOKE HypoPen, GVOKE PFS, or GVOKE Kit:

- The recommended dose is 1 mg administered by subcutaneous injection into lower abdomen, outer thigh, or outer upper arm.
- If there has been no response after 15 minutes, an additional 1 mg dose from a new GVOKE HypoPen, GVOKE PFS, or GVOKE Kit may be administered while waiting for emergency assistance

Recommended Dosage in Pediatric Patients Aged 2 to less than 12 Years of Age to Treat Severe Hypoglycemia

To treat severe hypoglycemia in pediatric patients aged 2 to less than 12 years of age with diabetes, use GVOKE HypoPen, GVOKE PFS, or GVOKE Kit.

- The recommended dose in those who weigh:
 - o Less than 45 kg is 0.5 mg administered by subcutaneous injection into the lower abdomen, outer thigh, or outer upper arm.
 - o 45 kg or greater is 1 mg administered by subcutaneous injection into the lower abdomen, outer thigh, or outer upper arm.
- If there has been no response after 15 minutes, an additional 0.5 mg dose (for those who weigh less than 45 kg) or 1 mg dose (for those who weigh 45 kg or greater) from a new GVOKE HypoPen, GVOKE PFS, or GVOKE Kit may be administered while waiting for emergency assistance.

2.2 Dosage and Administration of GVOKE VialDx for Intravenous Use as a Diagnostic Aid in Adults

Important Administration Information

For use as a diagnostic aid during radiologic examinations to temporarily inhibit movement of the gastrointestinal tract, use GVOKE VialDx. GVOKE VialDx is only for intravenous use under medical supervision

- Must be diluted with 0.9% Sodium Chloride Injection prior to administration. Using a syringe, draw 0.2 mL from the GVOKE VialDx vial and dispense into a separate empty sterile container containing 2 mL of 0.9% Sodium Chloride Injection.

- Gently swirl the container until the solution is thoroughly mixed. The mixed solution should be clear and colorless to pale yellow. Inspect visually for particulate matter and discoloration.
- The final concentration of the diluted solution is 0.45 mg/mL of glucagon. Draw the required dose from the container into a syringe for administration (see below for dosage recommendations).
- If not used immediately, diluted GVOKE VialDx may be stored for up to 8 hours after initial dilution.
- Inject the solution intravenously via a 1-minute slow push using consistent pressure.
- After the end of the diagnostic procedure, give oral carbohydrates to patients who have been fasting, if this is compatible with the diagnostic procedure.
- GVOKE VialDx contains a single dose of glucagon. Do not reuse. Discard any unused portion.

Recommended Dosage in Adults as a Diagnostic Aid

For use as a diagnostic aid during radiologic examinations to temporarily inhibit movement of the gastrointestinal tract, use GVOKE VialDx. The recommended intravenous dose for relaxation of the *[see Clinical Pharmacology (12.2)]*:

- Stomach, duodenal bulb, duodenum, and small bowel is 0.2 mg to 0.5 mg
- Colon is 0.5 mg to 0.75 mg

The onset of action after an injection will depend on the organ under examination *[see Clinical Pharmacology (12.2)]*.

3 DOSAGE FORMS AND STRENGTHS

GVOKE HypoPen, GVOKE PFS, GVOKE Kit (these three presentations are also referred to as GVOKE in this labeling) , and GVOKE VialDx are clear, colorless to pale yellow solutions.

Subcutaneous Injection

- Injection: 0.5 mg/0.1 mL single-dose prefilled autoinjector (GVOKE HypoPen)
- Injection: 1 mg/0.2 mL single-dose prefilled autoinjector (GVOKE HypoPen)
- Injection: 1 mg/0.2 mL single-dose prefilled syringe (GVOKE PFS)
- Injection: 1 mg/0.2 mL single-dose vial and syringe kit (GVOKE Kit)

Intravenous Injection:

- Injection: 1 mg/0.2 mL single-dose vial (GVOKE VialDx)

4 CONTRAINDICATIONS

GVOKE and GVOKE VialDx are contraindicated in patients with:

- Pheochromocytoma because of the risk of substantial increase in blood pressure *[see Warnings and Precautions (5.1)]*
- Insulinoma because of the risk of hypoglycemia *[see Warnings and Precautions (5.2)]*
- Prior hypersensitivity reaction to glucagon or to any of the excipients in GVOKE or GVOKE VialDx. Serious hypersensitivity reactions have been reported with glucagon and include anaphylactic shock with breathing difficulties and hypotension *[see Warnings and Precautions (5.3)]*.

GVOKE VialDx for use as a diagnostic aid is also contraindicated in patients with glucagonoma because of risk of hypoglycemia [see *Warnings and Precautions (5.8)*]

5 WARNINGS AND PRECAUTIONS

5.1 Substantial Increase in Blood Pressure in Patients with Pheochromocytoma

GVOKE and GVOKE VialDx are contraindicated in patients with pheochromocytoma because glucagon may stimulate the release of catecholamines from the tumor [see *Contraindications (4)*]. If the patient develops a substantial increase in blood pressure and a previously undiagnosed pheochromocytoma is suspected, 5 to 10 mg of phentolamine mesylate, administered intravenously, has been shown to be effective in lowering blood pressure.

5.2 Hypoglycemia in Patients with Insulinoma

In patients with insulinoma, administration of glucagon may produce an initial increase in blood glucose; however, glucagon administration may directly or indirectly (through an initial rise in blood glucose) stimulate exaggerated insulin release from an insulinoma and cause hypoglycemia. GVOKE and GVOKE VialDx are contraindicated in patients with insulinoma [see *Contraindications (4)*]. If a patient develops symptoms of hypoglycemia after a dose of GVOKE or GVOKE VialDx, give glucose orally or intravenously.

5.3 Serious Hypersensitivity Reactions

Serious hypersensitivity reactions have been reported with glucagon products, including generalized rash, and in some cases anaphylactic shock with breathing difficulties and hypotension. Discontinue GVOKE or GVOKE VialDx if symptoms of serious hypersensitivity reactions occur. Advise patients and/or caregivers to seek immediate medical attention if the patient experiences any symptoms of serious hypersensitivity reactions. GVOKE and GVOKE VialDx are contraindicated in patients with a prior hypersensitivity reaction to glucagon, or any of the excipients in GVOKE and GVOKE VialDx [see *Contraindications (4)*].

5.4 Lack of Efficacy with Subcutaneous Use for Severe Hypoglycemia in Patients with Decreased Hepatic Glycogen

Patients with insufficient hepatic stores of glycogen may not respond to GVOKE for the treatment of severe hypoglycemia [see *Clinical Pharmacology (12.2)*]. Insufficient hepatic stores of glycogen may be present in conditions such as states of starvation, or in patients with adrenal insufficiency or chronic hypoglycemia.

5.5 Necrolytic Migratory Erythema

Necrolytic migratory erythema (NME), a skin rash commonly associated with glucagonomas (glucagon-producing tumors) and characterized by scaly, pruritic erythematous plaques, bullae, and erosions, has been reported postmarketing following continuous glucagon infusion. GVOKE and GVOKE VialDx are not approved for continuous infusion. NME lesions may affect the face, groin, perineum and legs or be more widespread. In the reported cases NME resolved with discontinuation of the glucagon, and treatment with corticosteroids was not effective. Should NME occur, consider whether the benefits of continuous glucagon infusion outweigh the risks.

5.6 Hyperglycemia with Intravenous Use as a Diagnostic Aid in Patients with Diabetes Mellitus

GVOKE VialDx in patients with diabetes mellitus may cause hyperglycemia. Monitor patients with diabetes for changes in blood glucose levels during treatment with GVOKE VialDx and treat hyperglycemia, if indicated.

5.7 Blood Pressure and Heart Rate Increases with Intravenous Use as a Diagnostic Aid in Patients with Cardiac Disease

GVOKE VialDx may increase myocardial oxygen demand, blood pressure, and pulse rate which may be life threatening in patients with cardiac disease. Cardiac monitoring is recommended in patients with cardiac disease during use of GVOKE VialDx as a diagnostic aid, and an increase in blood pressure and pulse rate may require therapy.

5.8 Hypoglycemia in Patients with Glucagonoma with Intravenous Use as a Diagnostic Aid

Use of GVOKE VialDx in patients with glucagonoma may cause secondary hypoglycemia. GVOKE VialDx is contraindicated in patients with glucagonoma when used as a diagnostic aid [see *Contraindications (4)*]. Test patients suspected of having glucagonoma for blood levels of glucagon prior to administration of GVOKE VialDx, and monitor for changes in blood glucose levels during treatment. If a patient develops symptoms of hypoglycemia after administration of GVOKE VialDx, administer glucose orally or intravenously.

6 ADVERSE REACTIONS

The following serious adverse reactions are described below and elsewhere in labeling:

- Substantial Increase in Blood Pressure in Patients with Pheochromocytoma [see *Warnings and Precautions (5.1)*].
- Hypoglycemia in Patients with Insulinoma [see *Warnings and Precautions (5.2)*].
- Serious Hypersensitivity Reactions [see *Warnings and Precautions (5.3)*]
- Lack of Efficacy With Subcutaneous Use for Severe Hypoglycemia in Patients with Decreased Hepatic Glycogen [see *Warnings and Precautions (5.4)*]
- Necrolytic Migratory Erythema [see *Warnings and Precautions (5.5)*].
- Hyperglycemia with Intravenous Use as a Diagnostic Aid in Patients with Diabetes Mellitus [see *Warnings and Precautions (5.6)*]
- Blood Pressure and Heart Rate Increases with Intravenous Use as a Diagnostic Aid in Patients with Cardiac Disease [see *Warnings and Precautions (5.7)*]
- Hypoglycemia in Patients with Glucagonoma with Intravenous Use as a Diagnostic Aid [see *Warnings and Precautions (5.8)*]

6.1 Clinical Trials Experience

Because clinical trials are conducted under widely varying conditions, adverse reaction rates observed in the clinical trials of GVOKE and GVOKE VialDx cannot be directly compared to rates in the clinical trials of other drugs and may not reflect the rates observed in practice.

GVOKE for Subcutaneous Use for the Treatment of Severe Hypoglycemia in Adult and Pediatric Patients 2 Aged Years and Older with Type 1 Diabetes Mellitus

Adverse Reactions in Adult Patients

The safety of GVOKE for subcutaneous use for the treatment of severe hypoglycemia in adults with diabetes was evaluated in two randomized, blinded, 2-way crossover studies conducted in adults with type 1 diabetes mellitus. In total, 154 patients received a subcutaneous injection of GVOKE [see *Clinical Studies (14.1)*].

The most common adverse reactions that occurred in 2% or more of adults treated with GVOKE during these two clinical trials are listed in Table 1.

Table 1: Adverse Reactions that occurred \geq 2% in Adult Patients with Type 1 Diabetes Mellitus Treated with GVOKE^a

	GVOKE 1 mg dose (N = 154)
Nausea	30%
Vomiting	16%
Injection site edema raised 1 mm or greater	7%
Headache	5%

^aAdverse Reactions that occurred within 12 hours.

Injection site pain was reported by 1% of GVOKE-treated patients.

Hypertension and tachycardia have occurred with glucagon treatment.

Adverse Reactions in Pediatric Patients Aged 2 Years and Older

The safety of GVOKE for the treatment of severe hypoglycemia in patients with diabetes was evaluated in one single-arm, open-label, study in 31 pediatric patients with type 1 diabetes mellitus [see *Clinical Studies (14.2)*].

The data in Table 2 reflect the exposure of 31 pediatric patients to 0.5 mg or 1 mg of GVOKE given subcutaneously. The most common adverse reactions that occurred in \geq 2% of GVOKE-treated pediatric patients aged 2 years and older are listed in Table 2.

Table 2: Adverse Reactions That Occurred \geq 2% in GVOKE-treated Pediatric Patients Aged 2 Years and Older with Type 1 Diabetes Mellitus^a

	2 to 6 years of age (0.5 mg dose) N = 7	6 to 12 years of age (0.5 mg dose) N = 13	12 to 18 years of age (1 mg dose) N = 11	Total N = 31
Nausea	43%	54%	36%	45%
Hypoglycemia	29%	54%	27%	39%
Vomiting	14%	23%	18%	19%

Headache	0%	15%	0%	7%
Abdominal pain	0%	8%	0%	3%
Hyperglycemia	14%	8%	0%	7%
Injection site discomfort	0%	8%	0%	3%
Injection site reaction	0%	0%	9%	3%
Urticaria	0%	8%	0%	3%

^aAdverse Reactions that occurred within 12 hours.

GVOKE VialDx for Intravenous Use As a Diagnostic Aid in Adults

The safety of GVOKE VialDx for intravenous use as a diagnostic aid in adults was evaluated in an open-label single-dose study in 83 adult healthy volunteers. Table 3 displays the most common adverse reactions that occurred in 5% or greater in healthy volunteers who received 0.75 mg of GVOKE VialDx intravenously.

Table 3: Adverse Reactions that Occurred \geq 5 % in Adult Healthy Volunteers Who Received 0.75 mg of GVOKE VialDx for Intravenous Use as a Diagnostic Aid

	N=83
Nausea	37.3%
Dysgeusia	18.1%
Headache	10.8%
Hot Flush	9.6%
Dizziness	8.4%

6.2 Postmarketing Experience

Additional adverse reactions have been identified during post-approval use of glucagon. Because these reactions are reported voluntarily from a population of uncertain size, it is generally not possible to reliably estimate their frequency or establish a causal relationship to drug exposure.

- Necrolytic migratory erythema (NME) cases have been reported postmarketing in patients receiving continuous infusion of glucagon.
- Hypoglycemia and hypoglycemic coma. Patients taking indomethacin may be more likely to experience hypoglycemia following glucagon administration [*see Drug Interactions (7)*].

7 DRUG INTERACTIONS

Table 4: Clinically Significant Drug Interaction with GVOKE and GVOKE VialDx

Beta-Blockers	
<i>Clinical Impact:</i>	Patients taking beta-blockers may have a transient increase in pulse and blood pressure when given GVOKE or GVOKE VialDx.
<i>Intervention</i>	The increase in blood pressure and heart rate may require therapy in patients with coronary artery disease.
Insulin	
<i>Clinical Impact:</i>	Insulin acts antagonistically to glucagon.
<i>Intervention</i>	Monitor blood glucose when GVOKE VialDx is used as a diagnostic aid in patients receiving insulin.
Indomethacin	
<i>Clinical Impact:</i>	In patients taking indomethacin, GVOKE may lose its ability to raise blood glucose or may even produce hypoglycemia.
<i>Intervention</i>	Monitor blood glucose levels during glucagon treatment of patients taking indomethacin.
Anticholinergic Drugs	
<i>Clinical Impact:</i>	The concomitant use of anticholinergic drugs and GVOKE VialDx increases the risk of gastrointestinal adverse reactions due to additive effects on inhibition of gastrointestinal motility.
<i>Intervention</i>	Concomitant use of anticholinergic drugs with GVOKE VialDx is not recommended.
Warfarin	
<i>Clinical Impact:</i>	GVOKE and GVOKE Vial Dx may increase the anticoagulant effect of warfarin.
<i>Intervention</i>	Monitor patients for unusual bruising or bleeding, as adjustments in warfarin dosage may be required.

8 USE IN SPECIFIC POPULATIONS

8.1 Pregnancy

Risk Summary

Available data from case reports and a small number of observational studies with glucagon use in pregnant women over decades of use have not identified a drug-associated risk of major birth defects, miscarriage or adverse maternal or fetal outcomes. Multiple small studies have demonstrated a lack of transfer of pancreatic glucagon across the human placental barrier during early gestation. In a rat reproduction study, no embryofetal toxicity was observed with glucagon administered by injection during the period of organogenesis at doses representing up to 40 times the human dose, based on body surface area (mg/m^2) (*see Data*).

The estimated background risk of major birth defects and miscarriage for the indicated population is unknown. In the U.S. general population, the estimated background risk of major birth defects and miscarriage in clinically recognized pregnancies is 2-4% and 15-20%, respectively.

Data

Animal Data

In pregnant rats given animal sourced glucagon twice-daily by injection at doses up to 2 mg/kg (up to 40 times the human dose based on body surface area extrapolation, mg/m^2) during the period of organogenesis, there was no evidence of increased malformations or embryofetal lethality.

8.2 Lactation

Risk Summary

There is no information available on the presence of glucagon in human or animal milk, the effects of the drug on the breastfed infant, or the effects of the drug on milk production. However, glucagon is a peptide and would be expected to be broken down to its constituent amino acids in the infant's digestive tract and is therefore, unlikely to cause harm to an exposed infant.

8.4 Pediatric Use

The safety and effectiveness of GVOKE for subcutaneous use for the treatment of severe hypoglycemia in patients with diabetes have been established in pediatric patients aged 2 years and older. Use of GVOKE for this indication is supported by evidence from two adequate and well-controlled studies in adults with type-1 diabetes mellitus [*see Clinical Studies (14.1)*] and from a study in 31 pediatric patients ages 2 and older with type 1 diabetes mellitus [*see Clinical Studies (14.2)*].

The safety and effectiveness of GVOKE for subcutaneous use for the treatment of severe hypoglycemia in patients with diabetes have not been established in pediatric patients younger than 2 years of age.

Safety and effectiveness of GVOKE VialDx for intravenous use as a diagnostic aid during radiologic examinations to temporarily inhibit movement of the gastrointestinal tract in pediatric patients have not been established.

8.5 Geriatric Use

Clinical studies of GVOKE and GVOKE VialDx did not include sufficient numbers of patients aged 65 and over to determine whether they respond differently from younger adult patients.

10 OVERDOSAGE

If overdosage occurs, the patient may experience nausea, vomiting, inhibition of GI tract motility, increase in blood pressure, and pulse rate. In case of suspected overdosing, serum potassium may decrease and should be monitored and corrected if needed. If the patient develops a dramatic increase in blood pressure, phentolamine mesylate has been shown to be effective in lowering blood pressure for the short time that control would be needed. In the event of an overdose of GVOKE, consider contacting the Poison Help line (1-800-222-1222) or a medical toxicologist for additional overdosage management recommendation.

11 DESCRIPTION

Glucagon is an antihypoglycemic agent and a gastrointestinal motility inhibitor. Glucagon is a single chain containing 29 amino acid residues and has a molecular weight of 3483 and is identical to human glucagon. Glucagon is of synthetic origin produced by solid phase synthesis.

Its molecular formula is $C_{153}H_{225}N_{43}O_{49}S$ with the following structure:



GVOKE HypoPen, GVOKE PFS, and GVOKE Kit

GVOKE HypoPen (glucagon) injection, GVOKE PFS (glucagon) injection, and GVOKE Kit (glucagon) injection (these three presentations are also referred to as GVOKE (glucagon) injection in this labeling) are clear, colorless to pale yellow, sterile solutions for subcutaneous injection.

- GVOKE HypoPen and GVOKE PFS: Each 0.2 mL contains 1 mg of glucagon, 11.1 mg of trehalose dihydrate NF, and 1.2 mg of 1N sulfuric acid in 209 mg dimethyl sulfoxide diluent.
- GVOKE HypoPen: Each 0.1 mL contains 0.5 mg of glucagon, 5.6 mg of trehalose dihydrate NF, and 0.6 mg of 1N sulfuric acid in 104 mg dimethyl sulfoxide diluent.
- GVOKE Kit: Each 0.2 mL contains 1 mg of glucagon, 11.1 mg of trehalose dihydrate NF, 5.8 mg of mannitol USP, and 1.32 mg of 1N sulfuric acid in 205 mg dimethyl sulfoxide diluent.

GVOKE VialDx

GVOKE VialDx (glucagon) injection is a clear, colorless to pale yellow, sterile solution for

intravenous injection available in 1 mg per 0.2 mL vial.

Each 0.2 mL of GVOKE VialDx contains 1 mg of glucagon, 11.1 mg of trehalose dihydrate NF, 5.8 mg of mannitol USP, and 1.32 mg of 1N sulfuric acid in 205 mg dimethyl sulfoxide diluent prior to dilution with 0.9% Sodium Chloride [for dilution instructions, see *Dosage and Administration (2.2)*].

The diluted solution contains 0.45 mg per mL glucagon, 5 mg per mL trehalose dihydrate, 93.2 mg per mL dimethyl sulfoxide, 2.6 mg per mL mannitol, and 0.60 mg per mL 1 N sulfuric acid.

12 CLINICAL PHARMACOLOGY

12.1 Mechanism of Action

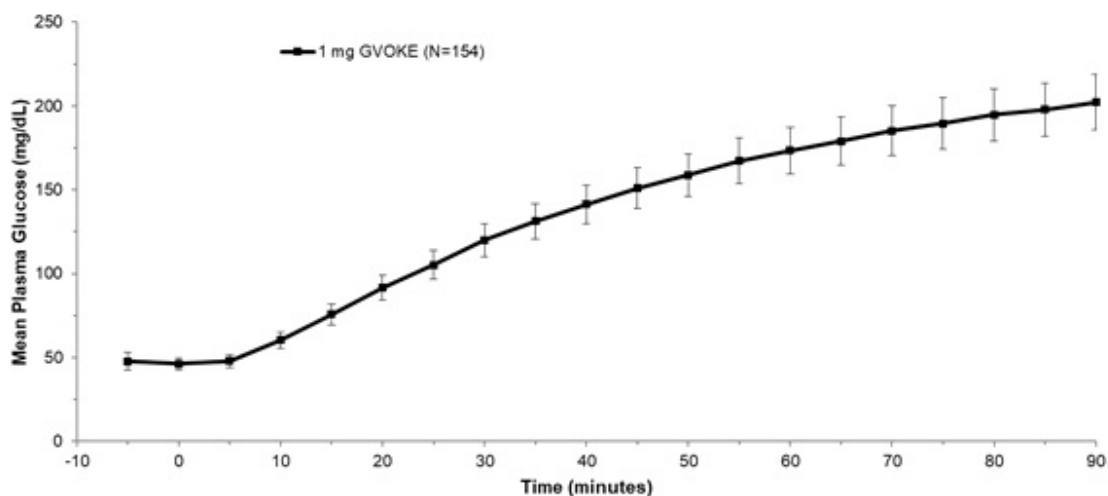
Glucagon increases blood glucose concentration by activating hepatic glucagon receptors, thereby stimulating glycogen breakdown and release of glucose from the liver. Hepatic stores of glycogen are necessary for glucagon to produce an antihypoglycemic effect. Extrahepatic effects of glucagon include relaxation of the smooth muscle of the stomach, duodenum, small bowel, and colon.

12.2 Pharmacodynamics

GVOKE for Subcutaneous Use for the Treatment of Severe Hypoglycemia in Patients with Type 1 Diabetes Mellitus:

After subcutaneous administration of 1 mg GVOKE in adult patients with type 1 diabetes, the mean maximum glucose increase from baseline was 176 mg/dL (see Figure 1).

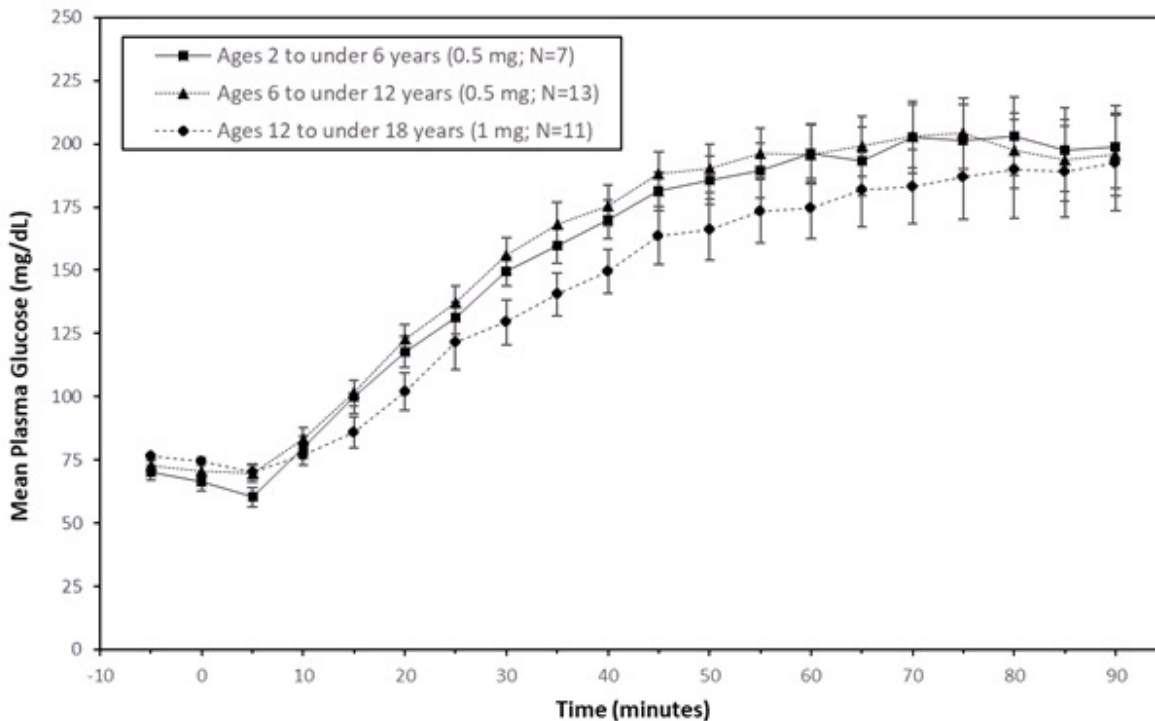
Plasma Glucose (mean \pm standard error of the mean) vs. Time After Subcutaneous Administration of 1 mg of GVOKE in Adult Patients with Type 1 Diabetes Mellitus



In pediatric patients with type 1 diabetes mellitus (2 to less than 18 years), the mean

maximum glucose increase from baseline was 134 mg/dL (2 to less than 6 years), 145 mg/dL (6 to less than 12 years), and 123 mg/dL (12 to less than 18 years) (see Figure 2).

Figure 2: Plasma Glucose (mean ± standard error of the mean) vs. Time After Subcutaneous Administration of GVOKE in Pediatric Patients with Type 1 Diabetes Mellitus



GVOKE VialDx Table 5 presents the pharmacodynamic properties of another glucagon product after intravenous administration

Table 5: Pharmacodynamic Properties of Another Glucagon Product After Intravenous Administration

Route of Administration	Dose ^a	Time of Maximal Glucose Concentration	Time of Onset of Action for GI Smooth Muscle Relaxation	Duration of Smooth Muscle Relaxation
Intravenous	0.25 to 0.5 mg	5 to 20 minutes	45 seconds	9 to 17 minutes

^aDose is determined based on the length of the procedure

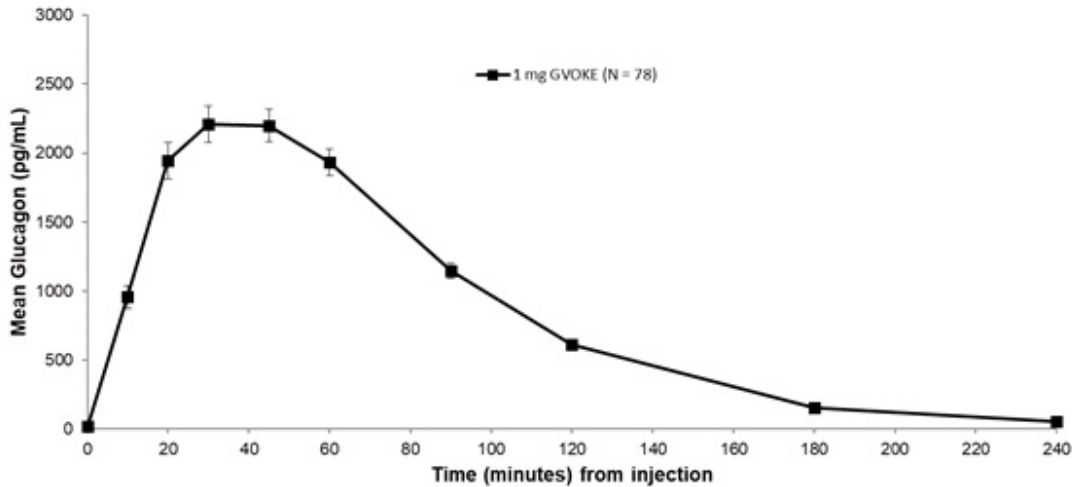
12.3 Pharmacokinetics

Absorption

Subcutaneous injection of 1 mg GVOKE in adult type 1 diabetes mellitus patients resulted in a mean glucagon C_{max} of 2481.3 pg/mL, t_{max} of 50 minutes and AUC_{0-240min} of

3454.6 pg*min/mL. See Figure 3.

Figure 3: : Plasma Glucagon Concentration (mean \pm standard error of the mean) vs. Time After Subcutaneous Administration of 1 mg of GVOKE in Adults with Type 1 Diabetes Mellitus



Distribution

The apparent volume of distribution was in the range of 137-2425 L.

Elimination

The half-life of GVOKE was determined to be 32 minutes.

Metabolism

Glucagon is extensively degraded in liver, kidney, and plasma.

Excretion

Urinary excretion of intact glucagon has not been measured.

Specific Populations

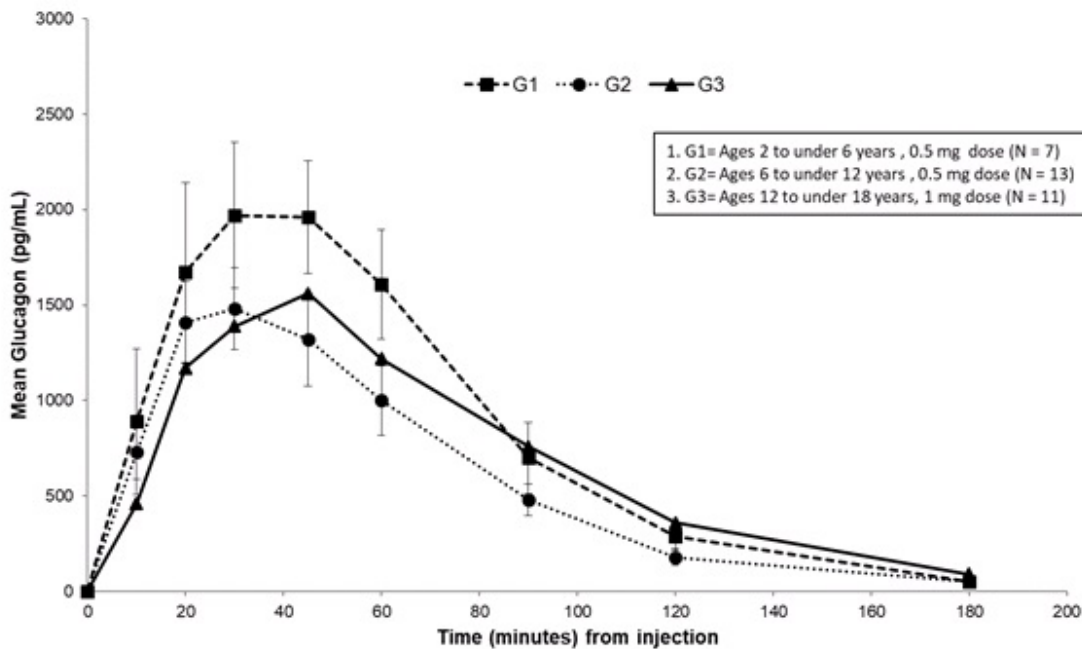
Pediatrics

Subcutaneous injection of 0.5 mg GVOKE in patients with type 1 diabetes mellitus ages 2 to under 6 years resulted in a mean glucagon C_{max} of 2300 pg/mL, t_{max} of 41 minutes, and $AUC_{0-180min}$ of 138900 pg/mL*min. Subcutaneous injection of 0.5 mg GVOKE in patients with type 1 diabetes ages 6 to under 12 years resulted in a mean C_{max} of 1600 pg/mL, median t_{max} of 34 minutes and $AUC_{0-180min}$ of 104700 pg/mL*min.

Subcutaneous injection of 1 mg GVOKE in patients with type 1 diabetes ages 12 to less than 18 years resulted in a mean C_{max} of 1900 pg/mL, t_{max} of 51 minutes $AUC_{0-180min}$ of 134300 pg/mL*min. Mean plasma glucagon levels were similar across the age groups following age appropriate doses of GVOKE. See Figure 4.

Figure 4: Plasma Glucagon Concentration (mean \pm standard error of the

mean) vs. Time After Subcutaneous Administration of GVOKE in Pediatric Patients with Type 1 Diabetes Mellitus



13 NONCLINICAL TOXICOLOGY

13.1 Carcinogenesis, Mutagenesis, Impairment of Fertility

Long term studies in animals to evaluate carcinogenic potential have not been performed. Recombinant glucagon was positive in the bacterial Ames assay. It was determined that an increase in colony counts was related to technical difficulties in running this assay with peptides. Studies in rats have shown that glucagon does not cause impaired fertility.

14 CLINICAL STUDIES

14.1 Adult Patients with Type 1 Diabetes Mellitus for the Treatment of Severe Hypoglycemia

GVOKE was evaluated in adult patients aged 18 to 74 years with type 1 diabetes mellitus in two multi-center 2-way crossover studies: Study A was double-blinded with 80 patients, and Study B was single-blinded with 81 patients. Both studies involved 2 clinic visits 7 to 28 days apart, with random assignment to receive GVOKE 1 mg subcutaneous injection during one session and glucagon 1 mg subcutaneous injection (subcutaneous glucagon) during the other. In these studies, 154 patients received GVOKE and 157 patients received subcutaneous glucagon. A total of 152 patients received both GVOKE and subcutaneous glucagon.

The efficacy of GVOKE was compared to subcutaneous glucagon in patients who were in a state of insulin- induced hypoglycemia via insulin infusion with target plasma glucose less than 50 mg/dL. In Study A, mean plasma glucose at time of glucagon administration was 44.8 mg/dL and 45.2 mg/dL for the GVOKE and subcutaneous glucagon groups, respectively. In Study B, mean plasma glucose at time of glucagon administration was

47.7 mg/dL and 48.7 mg/dL for the GVOKE and subcutaneous glucagon groups, respectively.

Treatment “success” was defined as plasma glucose increase from mean value at time of glucagon administration to absolute value greater than 70 mg/dL or relative increase of 20 mg/dL or greater, at 30 minutes after glucagon administration. In a pooled analysis of Study A and Study B, the proportion of patients who achieved treatment “success” was 98.7 % in the GVOKE group and 100% in the subcutaneous glucagon group and the comparison between groups met the pre-specified non-inferiority margin. A summary of treatment “success” rates is shown in Table 6.

The mean time to treatment "success" was 13.8 minutes in the GVOKE group and 10 minutes the subcutaneous glucagon group.

Table 6:Adult Patients with Type 1 Diabetes Mellitus Treatment “Success” in Studies A and B

	Study A (n=80)		Study B (n=81)	
	GVOKE	subcutaneous glucagon	GVOKE	subcutaneous glucagon
Treatment Success-n (%)^a	76 (97 %)	79 (100%)	76 (100%)	78 (100%)
Glucose criteria met- n (%)				
Greater than 70 mg/dL	74 (95%)	79 (100%)	76 (100%)	78 (100%)
20 mg/dL or greater increase from baseline	76 (97%)	79 (100%)	76 (100%)	78 (100%)

^a Treatment success was defined as blood glucose greater than 70 mg/dL or an increase of blood glucose by 20 mg/dL or greater from baseline. The efficacy analysis population consisted of all patients who received both doses of the study drug.

^b Percentage based on number of patients from both studies.

14.2 Pediatric Patients Aged 2 Years and Older with Type 1 Diabetes Mellitus for the Treatment of Severe Hypoglycemia

GVOKE was evaluated in a study in 31 pediatric patients with type 1 diabetes mellitus. Pediatric patients were administered insulin to induce a plasma glucose of less than 80 mg/dL, following which patients ages 2 to under 12 years of age received a 0.5 mg subcutaneous dose of GVOKE and patients ages 12 and older received a 0.5 mg or 1 mg subcutaneous dose of GVOKE.

All evaluable pediatric patients (30/30) achieved a target glucose increase of at least 25

mg/dL. Following administration, plasma glucose levels over time showed similar glucose responses for patients in each age group. A summary of plasma glucose results are shown in Table 7.

Table 7: Pediatric Patients with Type 1 Diabetes Mellitus Plasma Glucose by Age Group

Age Group	GVOKE Dose	Plasma Glucose (mg/dL) Mean (SD)		
		Baseline	30 minutes	Change
2 to under 6 years (n=7)	0.5 mg	68.1 (8.3)	149.6 (15.2)	81.4 (18.3)
6 to under 12 years (n=13)	0.5 mg	71.6 (7.6)	155.8 (26.5)	84.2 (25.3)
12 to under 18 years (n=11)	0.5 mg	75.2(2.1)	128.1(20.46)	52.9(19.88)
	1 mg	74.5(4.84)	129.5 (29.5)	55 (27.3)

SD=standard deviation

16 HOW SUPPLIED/STORAGE AND HANDLING

GVOKE glucagon injection is supplied as a clear, colorless to pale yellow solution in the following configurations:

Strength	Package Size	NDC number
<i>For Subcutaneous Use</i>		
0.5 mg per 0.1 mL	1 single-dose Gvoke HypoPen auto-injector	72065-120-11
0.5 mg per 0.1 mL	2 single-dose Gvoke HypoPen auto-injectors	72065-120-12
1 mg per 0.2 mL	1 single-dose Gvoke HypoPen auto-injector	72065-121-11
	2 single-dose Gvoke HypoPen	

1 mg per 0.2 mL	auto-injectors (HypoPen)	72065-121-12
1 mg per 0.2 mL	1 single-dose GVOKE PFS pre-filled syringe	72065-131-11
1 mg per 0.2 mL	2 single-dose GVOKE PFS pre-filled syringes	72065-131-12
1 mg per 0.2 mL	1 single-dose GVOKE Kit vial and syringe kit	72065-140-11
<i>For Intravenous Use</i>		
1 mg per 0.2 mL	1 single-dose GVOKE VialDx vial	0517-2901-01
1 mg per 0.2 mL	10 single-dose GVOKE VialDx vials	0517-2901-10

Store GVOKE HypoPen, GVOKE PFS, and GVOKE Kit (these three presentations are referred to as GVOKE in this labeling), and GVOKE VialDx at 20°C to 25°C (68°F to 77°F); excursions permitted between 15°C and 30°C (59°F and 86°F). Do not refrigerate or freeze. Do not expose to extreme temperatures.

- Store the GVOKE HypoPen and GVOKE PFS in the original sealed foil pouch until time of use
- Store the GVOKE Kit vial and pouched syringe together in original carton until time of use.
- Store GVOKE VialDx vials in original carton until time of use. Discard any unused portion

17 PATIENT COUNSELING INFORMATION

Advise the patient and family members or caregivers to read the GVOKE FDA-approved patient labeling (Patient Information and Instructions for Use).

Recognition of Severe Hypoglycemia

Inform patients with diabetes mellitus and family members or caregivers on how to recognize the signs and symptoms of severe hypoglycemia and the risks of prolonged hypoglycemia.

Serious Hypersensitivity Reactions

Inform patients that serious hypersensitivity reactions can occur with GVOKE and GVOKE VialDx. Advise patients to seek immediate medical attention if they experience any symptoms of serious hypersensitivity reactions [see *Warnings and Precautions* (5.3)].

Hyperglycemia with Intravenous Use as a Diagnostic Aid in Patients with Diabetes Mellitus

Inform patients with diabetes mellitus that treatment with GVOKE VialDx may increase their risk of hyperglycemia [see *Warnings and Precautions (5.6)*].

Blood Pressure and Heart Rate Increase with Intravenous Use as a Diagnostic Aid in Patients with Cardiac Disease

Inform patients with cardiac disease that intravenous treatment with GVOKE VialDx may increase their risk of a transient increase in blood pressure and heart rate [see *Warnings and Precautions (5.7)*].

GVOKE® is a trademark of Xeris Pharmaceuticals, Inc.

GVOKE is distributed by Xeris Pharmaceuticals, Inc.

For information contact:

Xeris Pharmaceuticals, Inc.

1375 W Fulton St., Suite 1300, Chicago IL 60607

1-877-XERIS-37 (1-877-937-4737)

<https://www.xerispharma.com/www.xerispharma.com>

© 2025 Xeris Pharmaceuticals, Inc.

GVOKE VialDx™ is distributed by:

American Reagent, Inc.

Shirley, NY 11967

INSTRUCTIONS FOR USE

GVOKE HypoPen®
[GEE-voke hypo-pen]
(glucagon injection)
Auto-injector
for subcutaneous use

This “Instructions for Use” contains information on how to inject GVOKE HypoPen®

Section headings and other template-related items found in this IFU are for organization of the document only and are not intended for use in corresponding artwork/patient-facing IFU files. Figure numbers in this content document may not correspond to figure numbers in corresponding artwork/patient-facing IFU files.

Appropriate trademark symbol (™ or ®) should be used upon first use of a trademarked name on each page; usage may differ from this content file and final artwork based on page layout.

1. GVOKE HYPOPEN® VISUAL

Understanding GVOKE HypoPen

Adult GVOKE HypoPen contains a 1 mg dose of glucagon and is in a foil pouch. Below is a picture of the pouch. See the GVOKE HypoPen package for a full view of the Quick-Use Guide.

Adult GVOKE HypoPen (1 mg dose)

Gvoke HypoPen[®]
(glucagon injection)

1 mg per 0.2 mL

NDC 72065-121-11 Rx Only

Contains 1 Single-Dose Auto-Injector

FOR LOW BLOOD SUGAR EMERGENCY

1. Prepare

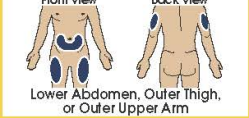
Tear Open Pouch at Dotted Line. Remove Auto-Injector.



Pull off Red Cap.



Choose Injection Site and Expose Skin.



2. Inject

Push Down on Skin to Start. Hold Down for 5 Seconds.



Wait for Window to Turn Red.



3. Assist

Turn Patient on Side. Call Emergency Medical Help.



After the Injection, Put the Used Pen in a Safe Place Until It Can Be Disposed of Into a FDA Cleared Sharps Container.



Needle End



Pediatric GVOKE HypoPen contains a 0.5 mg dose of glucagon and is in a foil pouch. Below is a picture of the pouch. See the GVOKE HypoPen package for a full view of the Quick-use guide.

Pediatric GVOKE HypoPen (0.5 mg dose)

Gvoke HypoPen[®]
(glucagon injection)

0.5 mg per 0.1 mL

NDC 72065-120-11 Rx Only

Contains 1 Single-Dose Auto-Injector

FOR LOW BLOOD SUGAR EMERGENCY

1. Prepare

Tear Open Pouch at Dotted Line. Remove Auto-Injector.



Pull off Red Cap.



Choose Injection Site and Expose Skin.



2. Inject

Push Down on Skin to Start. Hold Down for 5 Seconds.



Wait for Window to Turn Red.



3. Assist

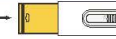
Turn Patient on Side. Call Emergency Medical Help.



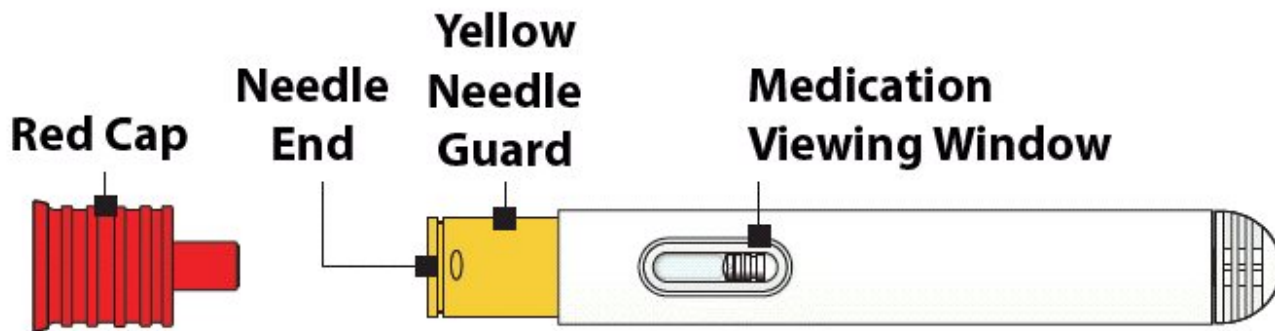
After the Injection, Put the Used Pen in a Safe Place Until It Can Be Disposed of Into a FDA Cleared Sharps Container.



Needle End



HypoPen Device



Note: GVOKE HypoPen should be used one time and then thrown away (discarded)

2. IMPORTANT INFORMATION YOU NEED TO KNOW BEFORE INJECTING GVOKE HYPOPEN®

- Become familiar with the following instructions before an emergency happens.
- Do not use this auto-injector past the expiration date printed on the device. Replace GVOKE HypoPen before the expiration date on the box.
- If you have questions regarding the use of this product, talk to a healthcare provider or pharmacist.

Make sure that relatives, close friends, or caregivers know that if you become unconscious, they should call for emergency medical help right away. GVOKE HypoPen may have been prescribed so that relatives, close friends, and caregivers can give the injection if you become hypoglycemic (severe low blood sugar) and are unable to take sugar by mouth. If you are unconscious, GVOKE HypoPen can be given while awaiting medical assistance.

Show your relatives, close friends, or caregivers where you store GVOKE HypoPen and how to use it. They need to know how to use GVOKE HypoPen before an emergency situation happens.

Indications for Use

GVOKE HypoPen is for the treatment of severe hypoglycemia in pediatric and adult patients with diabetes ages 2 years and above. Symptoms of severe hypoglycemia include, unconsciousness, and seizures or convulsions.

Give GVOKE HypoPen if:

1. the patient is unconscious,
2. the patient is unable to eat sugar or a sugar-sweetened product,
3. the patient is having a seizure, or
4. you have tried to give the patient sugar or drinks that are high in sugar such as a regular soft drink (soda) or fruit juice and the patient does not get better.

Milder cases of hypoglycemia should be treated promptly by eating sugar or a sugar sweetened product. (See Information on Hypoglycemia for more information on the symptoms of low blood sugar.) GVOKE HypoPen will not work when taken by mouth (orally).

Information on Hypoglycemia

Early symptoms of hypoglycemia (low blood sugar) include:

- sweating
- drowsiness
- dizziness
- sleep disturbances
- palpitation
- anxiety
- tremor
- light-headedness
- abnormal behavior
- inability to concentrate
- blurred vision
- hunger
- slurred speech
- depressed mood
- tingling in the hands, feet, lips, or tongue
- irritability
- unsteady movement
- headache
- personality changes

If not treated, the patient may progress to severe hypoglycemia which can include:

- confusion
- seizures
- unconsciousness
- death

The occurrence of early symptoms calls for quick and, if necessary, repeated administration of some form of carbohydrate. Patients should always carry a quick source of sugar, such as candy mints or glucose tablets. The prompt treatment of mild hypoglycemic symptoms can prevent severe hypoglycemic reactions. If the patient does not improve or if administration of carbohydrate is impossible, GVOKE HypoPen® should be given or the patient should be treated with intravenous glucose by a medical professional.

Possible Problems with GVOKE HypoPen Treatment

Common side effects in adults and pediatric patients are nausea and vomiting. The product may cause serious side effects including serious allergic reactions, fast heart beat and high blood pressure.

People may be allergic to glucagon or to one of the inactive ingredients in GVOKE HypoPen or may experience fast heart-beat for a short while.

If you experience any other reactions that may have been caused by GVOKE HypoPen, please contact your healthcare provider.

Important:

- Act quickly. Prolonged unconsciousness may be harmful.
- After the injection is complete, turn the unconscious patient on his or her side to prevent them from choking in case they throw up (vomit).
- Carefully read and follow these instructions. Have a healthcare provider show you the right way to use GVOKE HypoPen.

Important Warnings

- Do **not** open pouch until time of use.
- Do **not** use after the expiration date has passed.
- Do **not** use if the red needle cap has been removed or is damaged.
- Do **not** remove the red cap until you are ready to inject.

- Do **not** put or press thumb, fingers, or hand over the yellow needle guard.
- Call a healthcare provider as soon as glucagon has been injected.
- If the patient does not wake up within 15 minutes, give another dose of GVOKE HypoPen® and **call for emergency medical help right away**.
- **Feed the patient as soon as he or she wakes up and is able to swallow.**

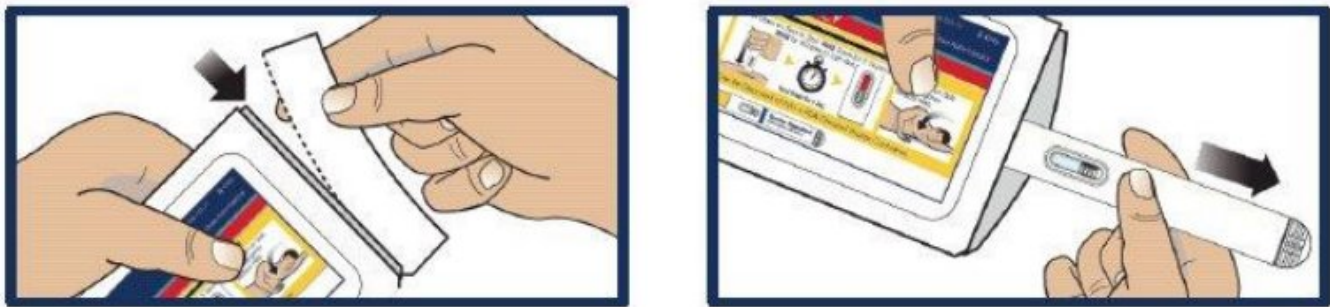
Read and become familiar with the following instructions before an emergency happens. If you have questions about using GVOKE HypoPen, talk with your healthcare provider or pharmacist.

3. PREPARING TO INJECT GVOKE HYPOPEN

Step 1. Remove GVOKE HypoPen from Foil Pouch

- Tear open pouch at the dotted line and carefully remove GVOKE HypoPen (see Figure 1).

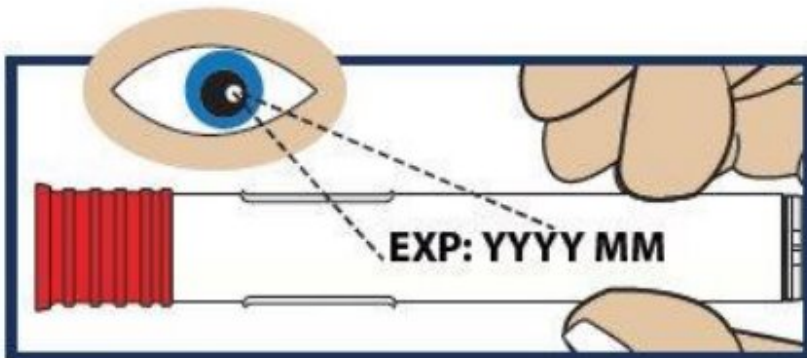
Figure 1



Step 2. Check the Expiration Date

- Check the expiration date printed on the label of GVOKE HypoPen (see Figure 2).
- **Important: Do not** use GVOKE HypoPen if the expiration date has passed. If GVOKE HypoPen is expired, throw it away in an FDA cleared sharps container and use a new GVOKE HypoPen.

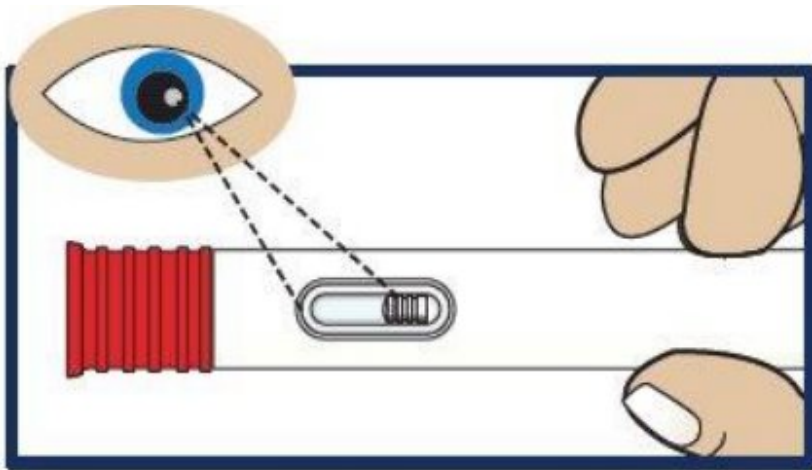
Figure 2



Step 3. Inspect the Solution

- Look at the liquid medicine through the viewing window. It must be clear and colorless, or a pale yellow (see Figure 3).
- **Important: Do not** use GVOKE HypoPen ® or inject if the liquid contains lumps, flakes, or particles. **Do not** inject if solution is not visible in the viewing window.
- If you do not have another GVOKE HypoPen to use, call for emergency help right away.

Figure 3

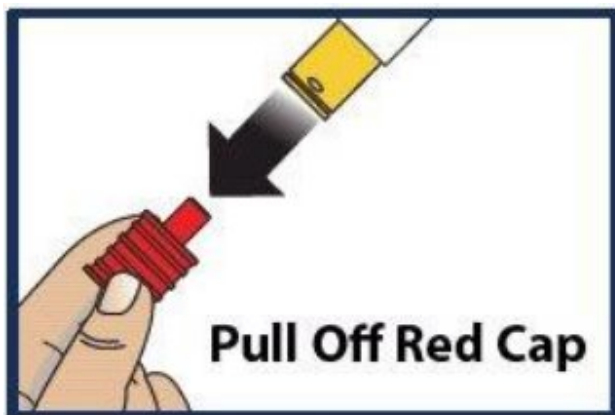


4. INJECTING GVOKE HYOPEN

Step 4. Pull Off Red Cap

- Pull the red needle cap straight off the device (see Figure 4).
- **Important: Do not** put your thumb, fingers, or hand on or near the needle guard or needle opening to help prevent accidental needle sticks.

Figure 4



Step 5. Choose Injection Site and Expose Bare Skin

- Choose the lower abdomen, outer thigh, or outer upper arm for your injection site (see Figure 5).
- Remove any clothing covering the injection site (see Figure 6). The injection must be

performed straight into the skin.

- **Important: Do not** inject through clothing.

Figure 5

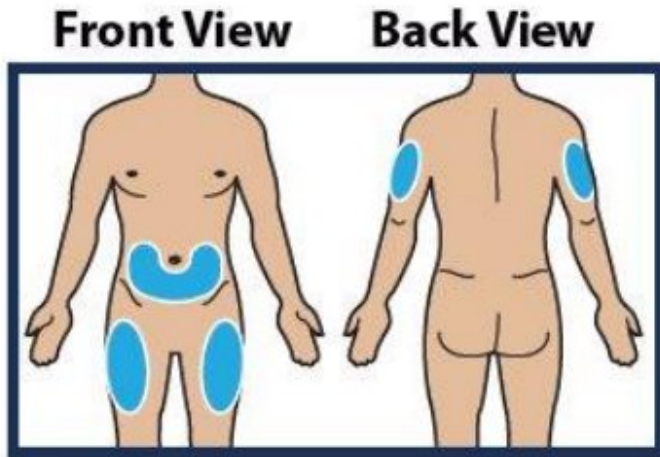
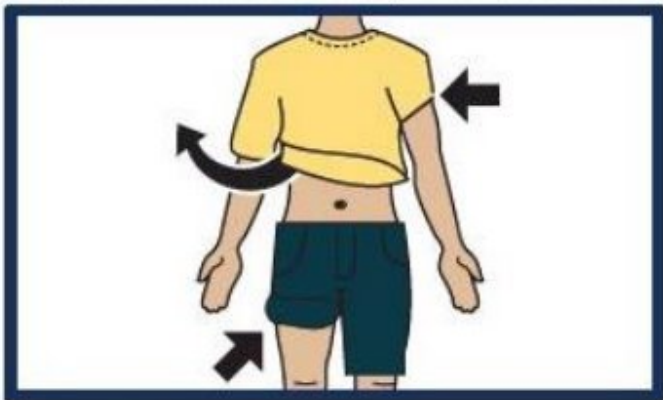


Figure 6

Expose Skin of Injection Site



Step 6. Push and Hold to Start Injection

- **Push** and **hold** GVOKE HypoPen® straight **down** against the injection site. Listen for a "Click".
- **Continue to hold the device down and count slowly to 5** (see Figure 7).
- When the injection is complete, the viewing window will be red (see Figure 8).
- **Important: Do not** lift up GVOKE HypoPen until the injection is complete.

Figure 7

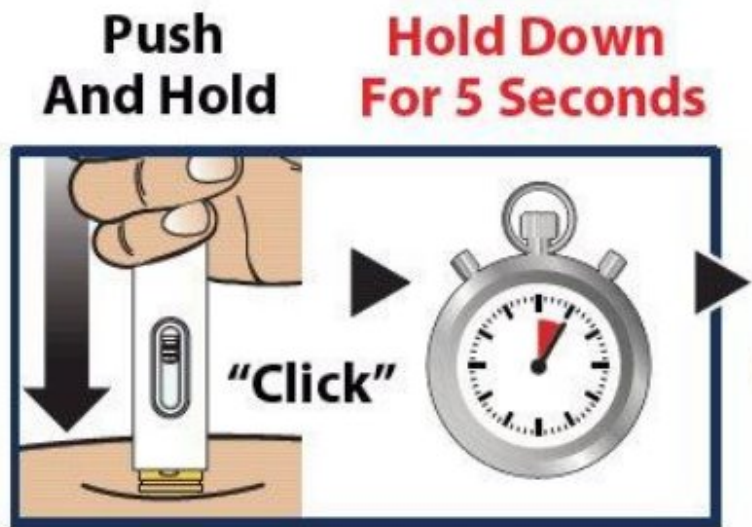
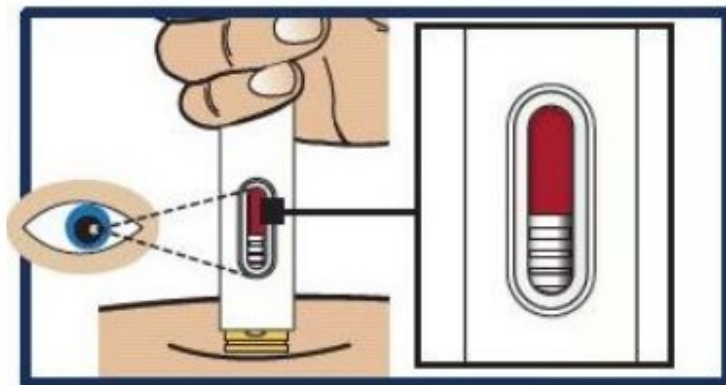


Figure 8

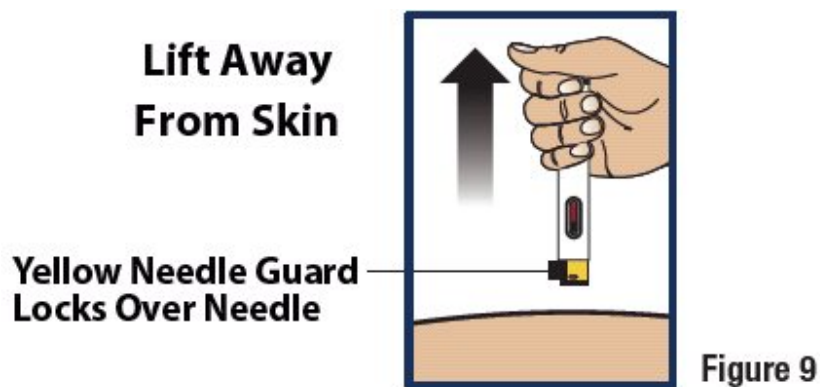


Step 7. Lift Away from Skin

Lift the device straight up from the injection site (see Figure 9).

- The yellow needle guard will lock over the needle.

Figure 9



Step 8. Turn Patient onto Side

- When an unconscious person wakes up, he or she may throw up (vomit).
- Turn the unconscious patient on their side to prevent choking (see Figure 10).

Figure 10



Step 9. Make Sure Patient Receives Immediate Medical Attention After Use

- Call for emergency medical help right after GVOKE HypoPen® has been injected.
- Even if GVOKE HypoPen helps the patient to wake up, you should still call for emergency medical help right away.
- The patient's healthcare provider should also be notified whenever a severe drop in blood sugar (hypoglycemic reactions) happens. Hypoglycemia may happen again after receiving an injection from GVOKE HypoPen. The patient's diabetes medicine may need to be changed.
- Feed the patient as soon as he or she wakes up and is able to swallow. Give the patient a fast-acting source of sugar (such as a regular soft drink or fruit juice) and a longacting source of sugar (such as crackers and cheese or a meat sandwich). If the patient does not wake up within 15 minutes, give another dose of glucagon if a second GVOKE HypoPen is available and notify emergency medical services right away.

5. STORING GVOKE HYPOPEN

Storage Information

- Store in sealed original foil pouch until time of use.
- Store at room temperature, 68° to 77°F (20° to 25°C).
- Do not refrigerate or freeze.

6. DISPOSING OF GVOKE HYPOPEN®

Re-cap and Dispose of GVOKE HypoPen in an FDA Cleared Sharps Disposal Container

If a puncture-resistant sharps container is not available, carefully re-cap and store GVOKE HypoPen in a safe place until it can be disposed of into a FDA cleared sharps container (see Figure 11).

- Do not throw away (dispose of) loose needles and syringes in your household

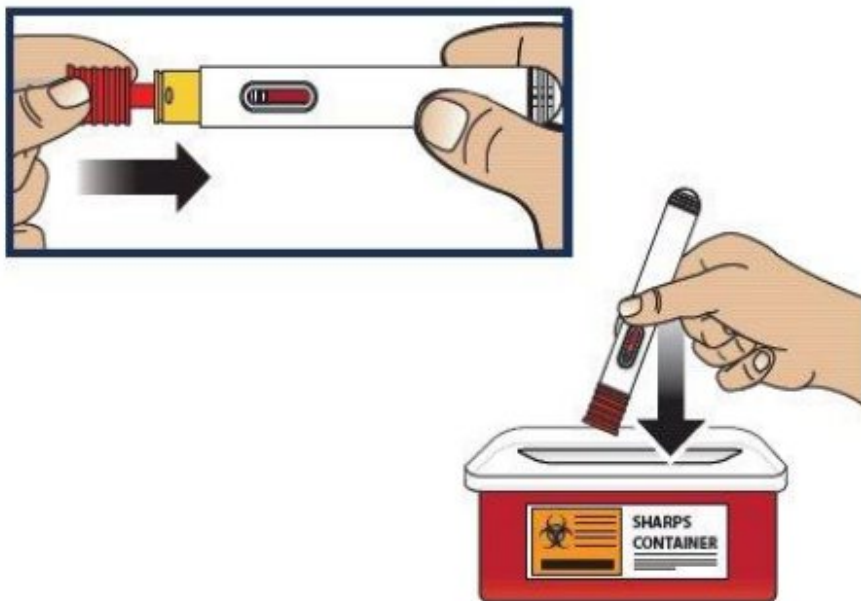
trash. If you do not have a FDA cleared sharps disposal container, you may use a household container that is:

- made of a heavy-duty plastic
- can be closed with a tight-fitting puncture-resistant lid, without sharps being able to come out
- upright and stable during use
- leak-resistant
- properly labeled to warn of hazardous waste inside the container.

When your sharps disposal container is almost full, you will need to follow your community guidelines for the right way to dispose of your sharps disposal container. There may be state or local laws about how you should throw away used needles and syringes. For more information about safe sharps disposal, and for specific information about sharps disposal in the state that you live in, go to the FDA's website at: <http://www.fda.gov/safesharpsdisposal>.

Do not dispose of your used sharps disposal container in your household trash unless your community guidelines permit this. Always keep the sharps container out of the reach of children. If needed, make sure to get a refill of GVOKE HypoPen.

Figure 11



7. ADDITIONAL INFORMATION

This Instructions for Use has been approved by the U.S. Food and Drug Administration.

Distributed by:
Xeris Pharmaceuticals, Inc.
Chicago, IL 60607

Revised 04/2023

©2023 by Xeris Pharmaceuticals, Inc.

INSTRUCTIONS FOR USE

GVOKE® PFS **[GEE-voke P-F-S]** **(glucagon injection)** **pre-filled syringe** **for subcutaneous use**

This “Instructions for Use” contains information on how to inject GVOKE® PFS

Section headings and other template-related items found in this IFU are for organization of the document only and are not intended for use in corresponding artwork/patient-facing IFU files. Figure numbers in this content document may not correspond to figure numbers in corresponding artwork/patient-facing IFU files.

Appropriate trademark symbol (™ or ®) should be used upon first use of a trademarked name on each page; usage may differ from this content file and final artwork based on page layout.

1. GVOKE® PFS VISUAL

Understanding GVOKE PFS

GVOKE PFS contains a 1 mg dose of glucagon and is in a foil pouch. Below is a picture of the pouch. See the GVOKE PFS package for a full view of the Quick-Use Guide.

GVOKE PFS (1 mg dose)

Gvoke® PFS
(glucagon injection)

1 mg per 0.2 mL

NDC 72065-131-11 Rx Only
Contains 1 Single-Dose Pre-Filled Syringe

FOR LOW BLOOD SUGAR EMERGENCY

1. Prepare

Tear Open Pouch at Dotted Line. Remove Syringe.

Choose Injection Site and Expose Skin.
Lower Abdomen, Outer Thighs, or Outer Upper Arm

Front View Back View

2. Inject

Pull off Needle Cap. Do NOT remove air bubbles.

Pinch the Skin. Insert the Needle at 90 degrees. Push the Plunger Down to Inject.

90°

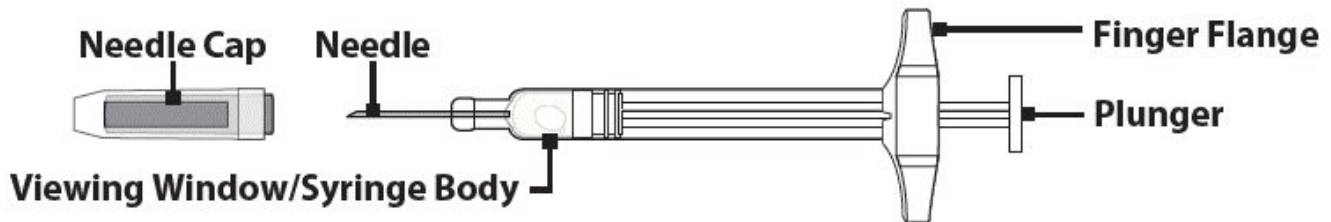
3. Assist

Turn Patient on Side, Call Emergency Medical Help.

After the Injection, Put the Used Syringe in a Safe Place Until It Can Be Disposed of Into a FDA Cleared Sharps Container. Do Not Recap the Syringe.

Needle Cap Needle Viewing Window/Syringe Body Finger Flange Plunger

PFS Device



Note: GVOKE PFS should be used one time and then thrown away (discarded).

2. IMPORTANT INFORMATION YOU NEED TO KNOW BEFORE INJECTING GVOKE® PFS

- Become familiar with the following instructions before an emergency happens.
- Do not use this product past the expiration date printed on the device. Replace GVOKE PFS before the expiration date on the box.
- If you have questions regarding the use of this product, talk to a healthcare provider or pharmacist.

Make sure that relatives, close friends, or caregivers know that if you become unconscious, they should call for emergency medical help right away. GVOKE PFS may have been prescribed so that relatives, close friends, and caregivers can give the injection if you become hypoglycemic (severe low blood sugar) and are unable to take sugar by mouth. If you are unconscious, GVOKE PFS can be given while awaiting medical assistance.

Show your relatives, close friends, or caregivers where you store GVOKE PFS and how to use it. They need to know how to use GVOKE PFS before an emergency situation happens.

Indications for Use

GVOKE PFS is for the treatment of severe hypoglycemia in pediatric and adult patients with diabetes ages 2 years and above. Symptoms of severe hypoglycemia include unconsciousness, and seizures or convulsions.

Give GVOKE PFS if:

1. the patient is unconscious,
2. the patient is unable to eat sugar or a sugar-sweetened product,
3. the patient is having a seizure, or
4. you have tried to give the patient sugar or drinks that are high in sugar such as a regular soft drink (soda) or fruit juice and the patient does not get better.

Milder cases of hypoglycemia should be treated promptly by eating sugar or a sugar sweetened product. (See Information on Hypoglycemia for more information on the symptoms of low blood sugar.) GVOKE PFS will not work when taken by mouth (orally).

Information on Hypoglycemia

Early symptoms of hypoglycemia (low blood sugar) include:

- sweating
- drowsiness
- dizziness
- blurred vision
- hunger
- slurred speech

- sleep disturbances
- palpitation
- anxiety
- tremor
- light-headedness
- abnormal behavior
- inability to concentrate
- depressed mood
- tingling in the hands, feet, lips, or tongue
- irritability
- unsteady movement
- headache
- personality changes

If not treated, the patient may progress to severe hypoglycemia which can include:

- confusion
- seizures
- unconsciousness
- death

The occurrence of early symptoms calls for quick and, if necessary, repeated administration of some form of carbohydrate. Patients should always carry a quick source of sugar, such as candy mints or glucose tablets. The prompt treatment of mild hypoglycemic symptoms can prevent severe hypoglycemic reactions. If the patient does not improve or if administration of carbohydrate is impossible, GVOKE® PFS should be given or the patient should be treated with intravenous glucose by a medical professional.

Possible Problems with GVOKE PFS Treatment

Common side effects in adults and pediatric patients are nausea and vomiting. The product may cause serious side effects including serious allergic reactions, fast heart beat and high blood pressure.

People may be allergic to glucagon or to one of the inactive ingredients in GVOKE PFS, or may experience fast heart-beat for a short while.

If you experience any other reactions that may have been caused by GVOKE PFS, please contact your healthcare provider.

Important:

- Act quickly. Prolonged unconsciousness may be harmful.
- After the injection is complete, turn the unconscious patient on his or her side to prevent them from choking in case they throw up (vomit).
- Carefully read and follow these instructions. Have a healthcare provider show you the right way to use GVOKE PFS.

Important Warnings

- **Do not** open pouch until time of use.
- **Do not** use after the expiration date has passed.
- **Do not** use if the needle cap has been removed or is damaged.
- **Do not** remove the needle cap until you are ready to inject.
- **Do not** remove the finger flange from the syringe.
- Call a healthcare provider as soon as GVOKE® PFS has been injected.
- If the patient does not wake up within 15 minutes, give another dose of GVOKE PFS and **call for emergency medical help right away.**

- Feed the patient as soon as he or she wakes up and is able to swallow.

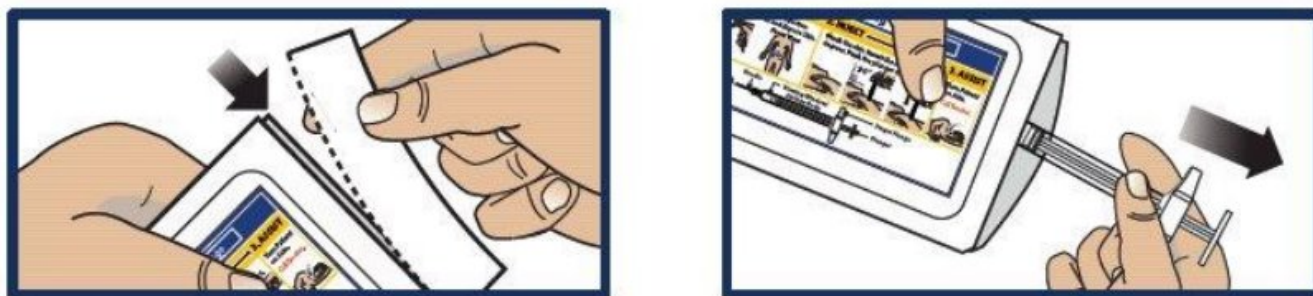
Read and become familiar with the following instructions before an emergency happens. If you have questions about using GVOKE PFS, talk with your healthcare provider or pharmacist.

3. PREPARING TO INJECT GVOKE® PFS

Step 1. Remove GVOKE PFS from Foil Pouch

- Tear open pouch at the dotted line and carefully remove GVOKE PFS (see Figure 1).

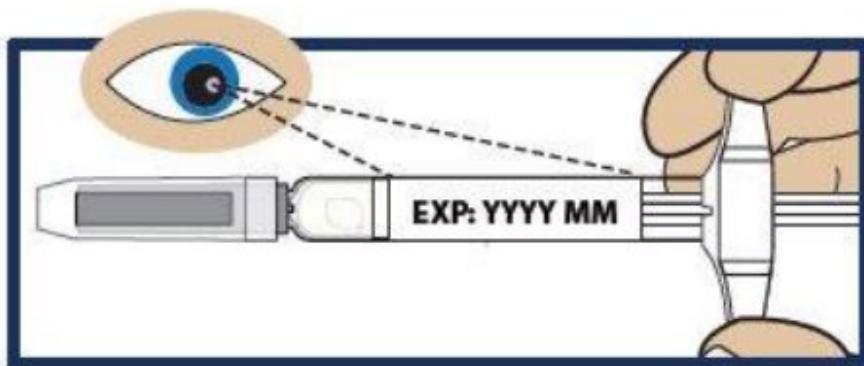
Figure 1



Step 2. Check the Expiration Date

- Check the expiration date printed on the label of GVOKE PFS (see Figure 2).
- **Important: Do not** use GVOKE PFS if the expiration date has passed. If GVOKE PFS is expired, throw it away in an FDA cleared sharps container and use a new GVOKE PFS.

Figure 2

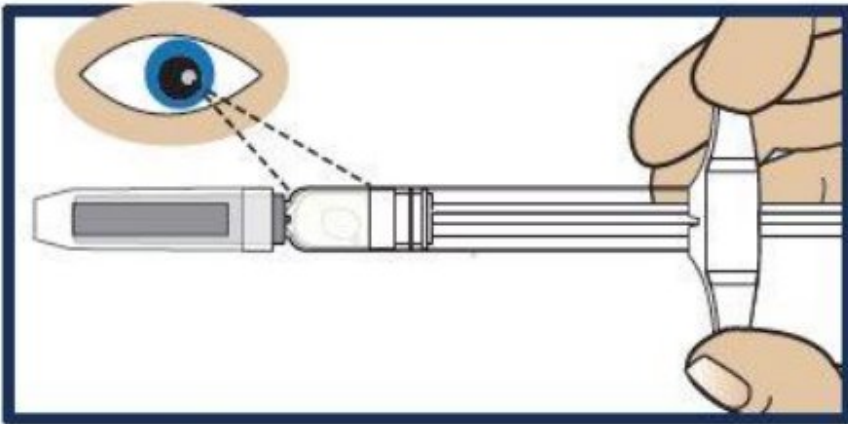


Step 3. Inspect the Solution

- Look at the liquid medicine through the viewing window. It must be clear and colorless, or a pale yellow (see Figure 3).
- It is normal to see air bubbles in the medicine.
- **Important: Do not** try to remove air bubbles before injecting.
- **Do not** use GVOKE® PFS or inject if the liquid contains lumps, flakes, or particles.

- **Do not** inject if solution is not visible in the viewing window.
- If you do not have another GVOKE PFS to use, call for emergency help right away.

Figure 3



4. INJECTING GVOKE® PFS

Step 4. Choose Injection Site and Expose Bare Skin

- Choose the lower abdomen, outer thigh, or outer upper arm for your injection site (see Figure 4).
- Remove any clothing covering the injection site (see Figure 5). The injection must be performed straight into the skin.
- **Important: Do not** inject through clothing

Figure 4

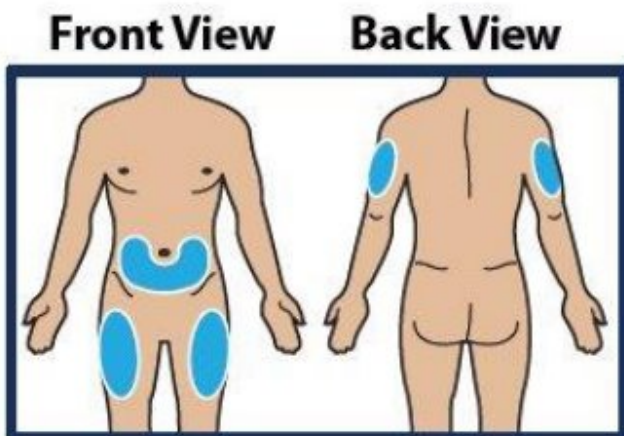
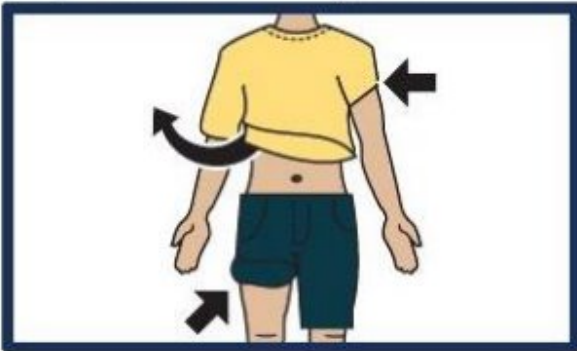


Figure 5

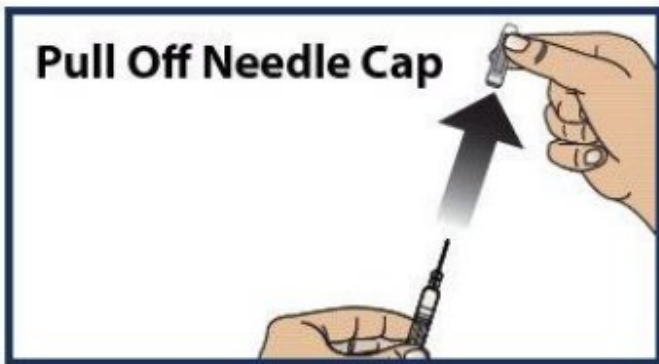
Expose Skin of Injection Site



Step 5. Pull off the Needle Cap

- **Pull** the needle cap straight off the syringe (see Figure 6).
- **Important: Do not** put your thumb, fingers, or hand on or near the needle to help prevent accidental needle sticks.

Figure 6



Step 6. Pinch, Insert and Push to Start Injection

- **Pinch** the skin directly around the chosen injection site and keep pinching for the entire injection (see Figure 7). This is recommended to make sure a subcutaneous (under the skin) injection is given and to prevent injection into the muscle.
- **Without touching the plunger, insert** the needle into the skin at the injection site at a 90-degree angle (see Figure 8).
- **Push** the plunger down as far as it will go to inject all of the liquid medicine into the skin (see Figure 9). You want to inject the medicine very fast to help decrease the pain.
- **Important: Do not** aspirate (pull back on plunger rod) after inserting the needle. **Push** the plunger down as far as it will go. **Do not** lift up GVOKE® PFS until the injection is complete.

Figure 7

Pinch



Figure 8

Insert

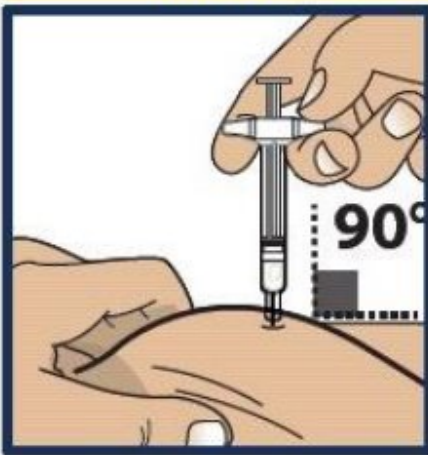
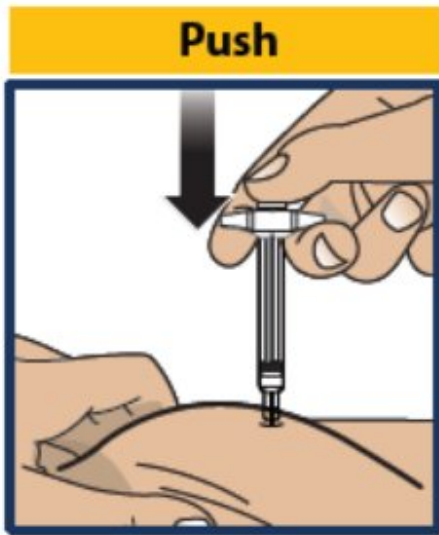


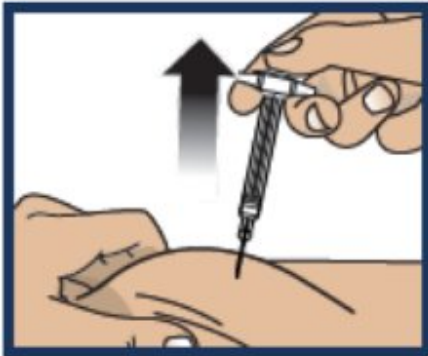
Figure 9



Step 7. Lift Away from Skin

- Lift the syringe straight up from the injection site (see Figure 10).
- **Important: Do not** re-cap the syringe.

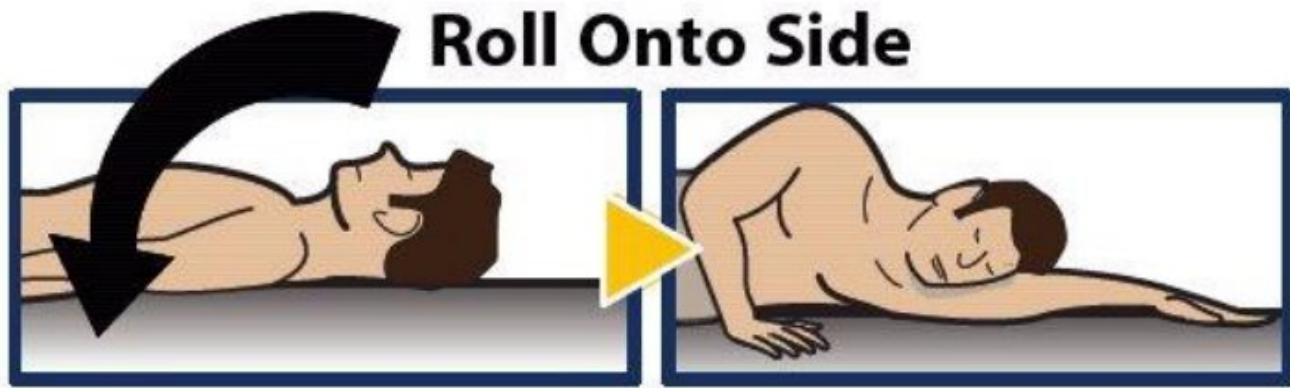
Figure 10



Step 8. Turn Patient onto Side

- When an unconscious person wakes up, he or she may throw up (vomit).
- Turn the unconscious patient on their side to prevent choking (see Figure 11).

Figure 11



Step 9. Make Sure Patient Receives Immediate Medical Attention After Use

- Call for emergency medical help right after GVOKE® PFS has been injected.
- Even if GVOKE PFS helps the patient to wake up, you should still call for emergency medical help right away.
- The patient's healthcare provider should also be notified whenever a severe drop in blood sugar (hypoglycemic reactions) happens. Hypoglycemia may happen again after receiving an injection from GVOKE PFS. The patient's diabetes medicine may need to be changed.
- Feed the patient as soon as he or she wakes up and is able to swallow. Give the patient a fast-acting source of sugar (such as a regular soft drink or fruit juice) and a long-acting source of sugar (such as crackers and cheese or a meat sandwich). If the patient does not wake up within 15 minutes, give another dose of glucagon if a second GVOKE PFS is available and notify emergency medical services right away.

5. STORING GVOKE® PFS

Storage Information

- Store in sealed original foil pouch until time of use.
- Store at room temperature, 68° to 77°F (20° to 25°C).
- **Do not refrigerate or freeze.**

6. DISPOSING OF GVOKE® PFS

Dispose of GVOKE PFS in an FDA Cleared Sharps Disposal Container

To prevent injury caused from contact with the used needle, put the used syringe in a safe place until it can be disposed of into a FDA cleared sharps container right away after use (see Figure 12). **Do not** throw away (dispose of) loose needles and syringes in your household trash.

If you do not have a FDA cleared sharps disposal container, you may use a household container that is:

- made of a heavy-duty plastic
- can be closed with a tight-fitting puncture-resistant lid, without sharps being able to come out
- upright and stable during use
- leak-resistant
- properly labeled to warn of hazardous waste inside the container.

When your sharps disposal container is almost full, you will need to follow your

community guidelines for the right way to dispose of your sharps disposal container. There may be state or local laws about how you should throw away used needles and syringes. For more information about safe sharps disposal, and for specific information about sharps disposal in the state that you live in, go to the FDA's website at: <http://www.fda.gov/safesharpsdisposal>.

Do not dispose of your used sharps disposal container in your household trash unless your community guidelines permit this. Always keep the sharps container out of the reach of children. If needed, make sure to get a refill of GVOKE PFS.

Figure 12



7. ADDITIONAL INFORMATION

This Instructions for Use has been approved by the U.S. Food and Drug Administration.

Distributed by:
Xeris Pharmaceuticals, Inc.
Chicago, IL 60607

Revised 04/2023

©2023 by Xeris Pharmaceuticals, Inc.

INSTRUCTIONS FOR USE

GVOKE KIT

[GEE-voke k-it]

glucagon injection

Subcutaneous Injection

This Instructions for Use contains information on how to inject GVOKE[®] KIT.

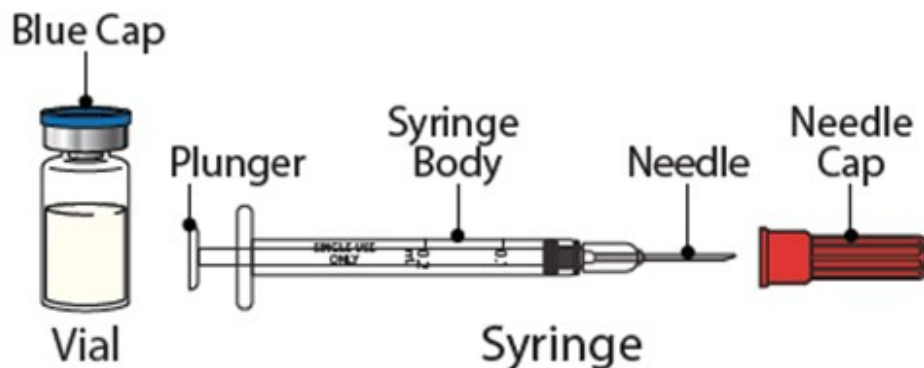
Section headings and other template-related items found in this IFU are for organization of the document only and are not intended for use in corresponding artwork/patient-facing IFU files. Figure numbers in this content document may not correspond to figure numbers in artwork/patient-facing IFU files.

GVOKE[®] KIT VISUAL

Understanding GVOKE KIT

GVOKE KIT contains one (1) single-dose sterile syringe (29 G x ½" needle) with markings

for 0.1 mL (0.5 mg pediatric dose) and 0.2 mL (1 mg adult dose), and one single-dose vial containing 0.2 mL of solution.



Note: Each Gvoke vial and syringe should be used only one time and then discarded.

STORING GVOKE KIT

Storage Information

- Store vial and pouched syringe together in original carton until time of use. Do not remove syringe from pouch until time of use.
- Store at room temperature, 68°F to 77°F (20°C to 25°C).
- Do not refrigerate or freeze.
- Protect vial from light exposure.

IMPORTANT INFORMATION YOU NEED TO KNOW BEFORE INJECTING GVOKE KIT

- Become familiar with the following instructions before an emergency happens.
- Do not use this product past the expiration date printed on the vial. Replace GVOKE® KIT before the expiration date on the box.
- If you have questions regarding the use of this product, talk to a healthcare provider or pharmacist.

Make sure that relatives, close friends, or caregivers know that if you become unconscious, they should call for emergency medical help right away. GVOKE KIT may have been prescribed so that relatives, close friends, and caregivers can give the injection if you become hypoglycemic (severe low blood sugar) and are unable to take sugar by mouth. If you are unconscious, GVOKE KIT can be given while awaiting medical assistance.

Show your relatives, close friends, or caregivers where you store GVOKE KIT and how to use it. They need to know how to use GVOKE KIT before an emergency happens.

Indications for Use

GVOKE KIT is for the treatment of severe hypoglycemia in pediatric and adult patients with diabetes ages 2 years and above. Symptoms of severe hypoglycemia include unconsciousness and seizures or convulsions.

Give GVOKE KIT if:

1. the patient is unconscious,
2. the patient is unable to eat sugar or a sugar-sweetened product,
3. the patient is having a seizure, or
4. you have tried to give the patient sugar or drinks that are high in sugar such as a regular soft drink (soda) or fruit juice and the patient does not get better.

Milder cases of hypoglycemia should be treated promptly by eating sugar or a sugar-sweetened product. (See Information on Hypoglycemia for more information on the symptoms of low blood sugar.) GVOKE KIT will not work when taken by mouth (orally).

Information on Hypoglycemia**Early symptoms of hypoglycemia (low blood sugar) include:**

- sweating
- drowsiness
- dizziness
- sleep disturbances
- palpitations
- anxiety
- tremor
- blurred vision
- unsteady movement
- headache
- hunger
- slurred speech
- depressed mood
- tingling in the hands, feet, lips, or tongue
- irritability
- light-headedness
- abnormal behavior
- inability to concentrate
- personality changes

If not treated, the patient may progress to severe hypoglycemia which can include:

- confusion
- seizures
- unconsciousness
- death

The occurrence of early symptoms of hypoglycemia calls for quick and, if necessary, repeated administration of some form of carbohydrate. Patients should always carry a quick source of sugar, such as candy mints or glucose tablets. The prompt treatment of mild hypoglycemic symptoms can prevent severe hypoglycemic reactions. If the patient does not improve or if administration of carbohydrate is not possible, GVOKE[®] KIT should be used or the patient should be treated with intravenous glucose by a medical professional.

Possible Problems with GVOKE KIT Treatment

Common side effects in adults and pediatric patients are nausea and vomiting. The product may cause serious side effects including serious allergic reactions, fast heart-beat, and high blood pressure.

People may be allergic to glucagon or to one of the inactive ingredients in GVOKE KIT or may experience fast heartbeat for a short while.

If you experience any other reactions that may have been caused by GVOKE KIT, please contact your healthcare provider.

Important:

- Act quickly. Prolonged unconsciousness may be harmful.
- After the injection is complete, turn the unconscious patient on his or her side to prevent them from choking in case they throw up (vomit).
- Carefully read and follow these instructions. Have a healthcare provider show you the right way to use GVOKE KIT.

Important Warnings

- **Do not** remove syringe from pouch until time of use.
- **Do not** use after the expiration date has passed.
- **Do not** use if the needle cap has been removed or is damaged.
- Draw the correct dose of Gvoke: 0.1 mL for pediatric patients aged 2 to under 12 years of age weighing less than 45 kg (100 lbs) and 0.2 mL for adults and pediatric patients aged 12 years and older or pediatric patients weighing 45 kg (100 lbs) or greater.
- There will be unused medicine in the vial after use. **Do not** save unused medicine for later use. Throw away (discard) unused portion
- Call a healthcare provider as soon as glucagon has been injected.
- If the patient does not wake up within 15 minutes, give another dose of GVOKE[®] KIT and **call for emergency medical help right away**.
- **Feed the patient as soon as he or she wakes up and is able to swallow.**

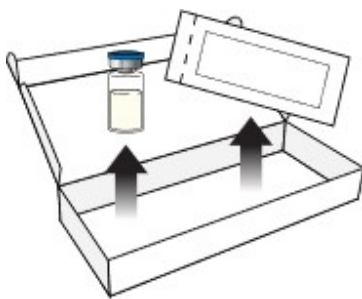
Read and become familiar with the following instructions before an emergency happens. If you have questions about using GVOKE KIT, talk with your healthcare provider or pharmacist.

PREPARING TO INJECT GVOKE KIT

Step 1. Remove GVOKE Vial and Syringe from Carton

- Open carton and carefully remove GVOKE vial and syringe (see Figure A).

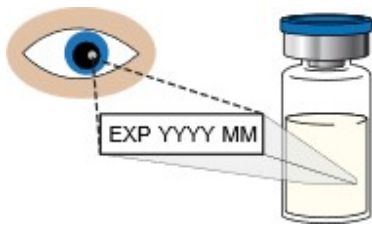
Figure A



Step 2. Check the Expiration Date on GVOKE Vial

- Check the expiration date printed on the label of the GVOKE vial (see Figure B).
- **Important: Do not** use the GVOKE vial if the expiration date has passed. If the GVOKE vial is expired, discard and use a new GVOKE KIT. If you do not have another GVOKE KIT to use call for emergency medical help right away.

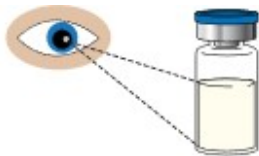
Figure B



Step 3. Inspect the Solution in GVOKE[®] Vial

- Look at the liquid medicine in the vial. It must be clear and colorless, or a pale yellow (see Figure C).
- **Important: Do not** use GVOKE or inject if the liquid contains lumps, flakes, or particles.

Figure C



Step 4. Prepare

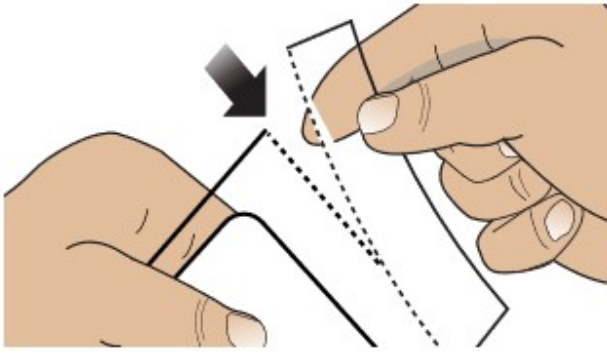
- Remove the blue cap from the vial to expose the rubber stopper (see Figure D).

Figure D



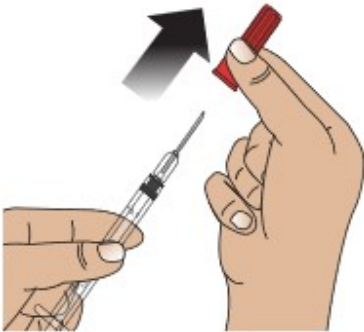
- Tear Open Pouch at Dotted Line (see Figure E). Remove syringe.

Figure E



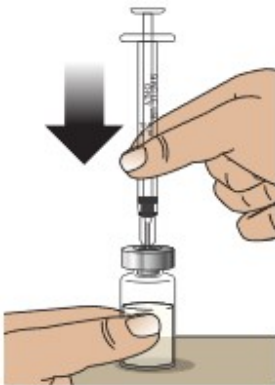
- **Pull** the needle cap straight off the syringe (see Figure F).
- **Important: Do not** put your thumb, fingers, or hand on or near the needle to help prevent accidental needle sticks.

Figure F



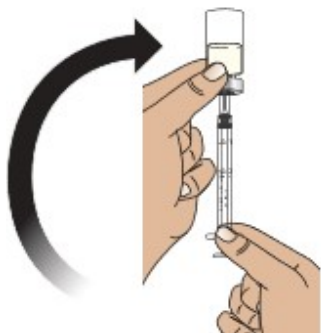
- Push the needle fully into the center of the rubber stopper (see Figure G). It is important to make sure the needle punctures within the raised circle of the stopper.

Figure G



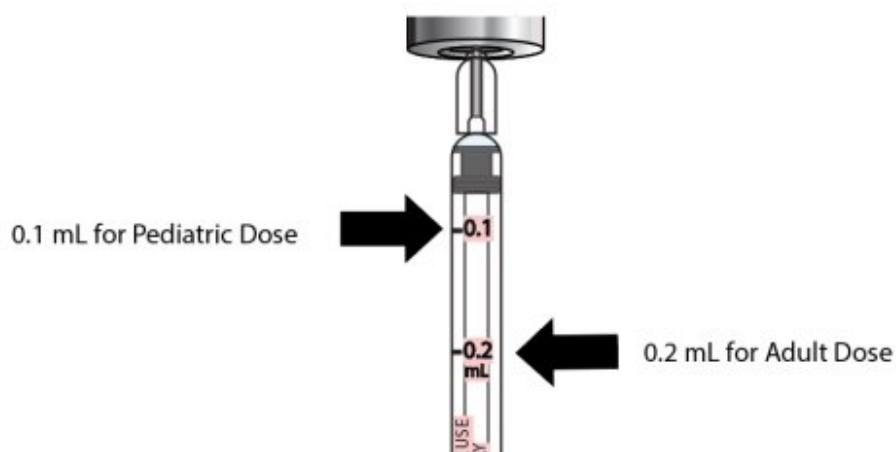
- Flip vial and syringe so vial is on top (see Figure H).

Figure H



- Hold the vial upside down and pull the plunger out until the mark for 0.1 mL (0.5 mg pediatric dose) or 0.2 mL (1 mg adult dose) is lined up with the plunger and remove the syringe from the vial stopper (Figure I).

Figure I



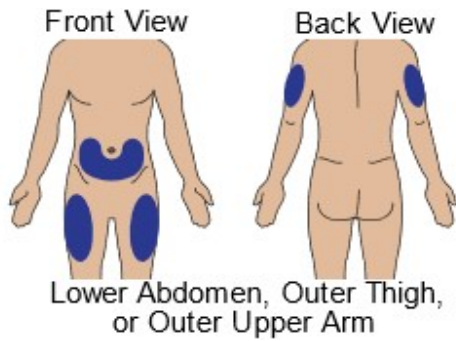
- GVOKE should be administered immediately.
- **Important:** Avoid drawing air into the syringe. If large air bubbles are drawn into the syringe, gently press the plunger to push air bubbles back into the vial and redraw the dose.
- There will be unused medicine in the vial after use. **Do not** save unused medicine for later use. Throw away (discard) unused portion.

INJECTING GVOKE[®] KIT

Step 5. Choose Injection Site and Expose Bare Skin

- Choose the lower abdomen, outer thigh, or outer upper arm for your injection site (see Figure J).

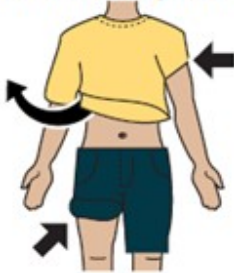
Figure J



- Remove any clothing covering the injection site (see Figure K). The injection must be performed straight into the skin.
- **Important: Do not** inject through clothing.

Figure K

Expose Skin of Injection Site



Step 6. Pinch, Insert, and Push to Start Injection

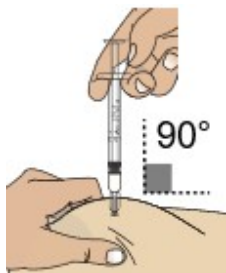
- **Pinch** the skin directly around the chosen injection site and keep pinching for the entire injection (see Figure L). This is recommended to make sure a subcutaneous (under the skin) injection is given and to prevent injection into the muscle.

Figure L



- **Without touching the plunger, insert** the needle into the skin at the injection site at a 90 degree angle (see Figure M).

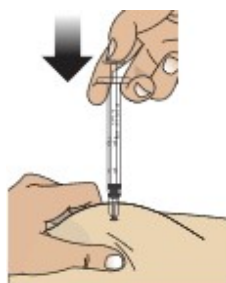
Figure M



- **Push** the plunger down as far as it will go to inject all of the liquid medicine into the skin (see Figure N). You want to inject the medicine very fast to help decrease the pain.

Important: Do not aspirate (pull back on plunger rod) after inserting the needle. **Do not** lift up the syringe until the injection is complete.

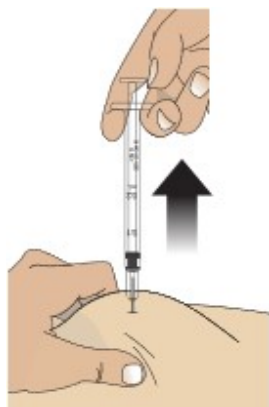
Figure N



Step 7. Lift Away from Skin

- Lift the syringe straight up from the injection site (Figure O).
- **Important: Do not** re-cap the syringe.

Figure O



Step 8. Turn Patient onto Side

- When an unconscious person wakes up, he or she may throw up (vomit).
- Turn the unconscious patient on their side to prevent choking (see Figure P).

Figure P



Step 9. Make Sure Patient Receives Immediate Medical Attention After Use

- Call for emergency medical help right after GVOKE has been injected.
- Even if GVOKE[®] KIT helps the patient to wake up, you should still call for emergency medical help right away.
- The patient's healthcare provider should also be notified whenever a severe drop in blood sugar (hypoglycemic reactions) happens. Hypoglycemia may happen again after receiving an injection from GVOKE KIT. The patient's diabetes medicine may need to be changed.
- Feed the patient as soon as he or she wakes up and is able to swallow. Give the patient a fast-acting source of sugar (such as a regular soft drink or fruit juice) and a long-acting source of sugar (such as crackers and cheese or a meat sandwich).
- If the patient does not wake up within 15 minutes, give another dose of glucagon if a second GVOKE KIT is available and notify emergency medical services right away.

DISPOSING OF GVOKE KIT

Disposing of GVOKE KIT

After the injection, discard vial with unused medicine and place the used syringe in a safe place until it can be disposed of in an FDA-cleared sharps container (see Figure Q). **Do not** throw away (dispose of) loose needles and syringes in your household trash.

If you do not have an FDA-cleared sharps disposal container, you may use a household container that is:

- made of a heavy-duty plastic
- can be closed with a tight-fitting puncture-resistant lid, without sharps being able to come out
- upright and stable during use
- leak-resistant
- properly labeled to warn of hazardous waste inside the container

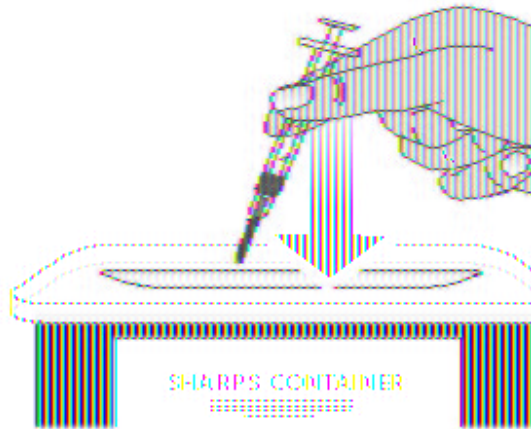
When your sharps disposal container is almost full, you will need to follow your community guidelines for the right way to dispose of your sharps disposal container. There may be state or local laws about how you should throw away used needles and syringes. For more information about safe sharps disposal, and for specific information about sharps disposal in the state that you live in, go to the FDA's website at: <http://www.fda.gov/safesharpsdisposal>.

Do not dispose of your used sharps disposal container in your household trash unless your community guidelines permit this. Do not recycle your used sharps disposal container.

Always keep the sharps container out of the reach of children.

If needed, make sure to get a refill of your GVOKE KIT.

Figure Q



ADDITIONAL INFORMATION

This Instructions for Use has been approved by the U.S. Food and Drug Administration.

Distributed by:
Xeris Pharmaceuticals, Inc.
Chicago, IL 60607
Original Approval 08/2021

©2023 by Xeris Pharmaceuticals, Inc.

Gvoke Patient Package Insert

<p>PATIENT INFORMATION GVOKE® (Gee-voke) (glucagon) injection, for subcutaneous use</p> <p>GVOKE (Gee-voke) VialDx™ (glucagon) injection, for intravenous use</p>
<p>What is GVOKE? GVOKE is a prescription medicine used:</p> <ul style="list-style-type: none">• to treat very low blood sugar (severe hypoglycemia) in people with diabetes aged 2 years and older. <p>It is not known if GVOKE is safe and effective in children under 2 years of age.</p>

What is GVOKE VialDx?

GVOKE VialDx is a prescription medicine used:

- to stop stomach movement (gastrointestinal motility inhibitor) in adults receiving radiology exams.

It is not known if GVOKE VialDx is safe and effective in children.

Do not use GVOKE or receive Gvoke VialDx if you:

- have a tumor in the gland on top of your kidneys (adrenal gland) called pheochromocytoma.
- have a tumor in your pancreas called insulinoma.
- have had an allergic to glucagon or any of the ingredients in GVOKE, or Gvoke VialDx. See the end of this Patient Information leaflet for a complete list of ingredients in GVOKE and Gvoke VialDx.

Do not receive GVOKE VialDx if you::

- have tumors in your pancreas called Glucagonomas

Before using GVOKE or receiving Gvoke VialDx, tell your healthcare provider about all of your medical conditions, including if you:

- have adrenal gland problems.
- have a tumor in your pancreas.
- have not had food or water for a long time (prolonged fasting or starvation).
- have low blood sugar that does not go away (chronic hypoglycemia).
- have diabetes mellitus
- have heart problems
- are pregnant or plan to become pregnant. It is not known if GVOKE or GVOKE VialDx will harm your unborn baby
- are breastfeeding or plan to breastfeed. It is not known if GVOKE passes into your breast milk. You and your healthcare provider should decide if you can use GVOKE while breastfeeding.

Tell your healthcare provider about all the medicines you take, including prescription and over-the-counter medicines, vitamins, and herbal supplements. GVOKE and Gvoke VialDx may affect the way other medicines work, and other medicines may affect how GVOKE and Gvoke VialDx works. Know the medicines you take. Keep a list of them to show your healthcare provider and pharmacist when you get a new medicine.

How should I use GVOKE?

- Read the detailed Instructions for Use that comes with GVOKE.
- Use GVOKE exactly how your healthcare provider tells you to use it.
- Make sure your relatives, close friends, and caregivers know where you store GVOKE and how to use it the right way **before** you need their help.
- Act quickly. Having very low blood sugar for a period of time may be harmful.
- After giving GVOKE, your caregiver should call for emergency medical help right away.
- When you are able to safely swallow food or drink, your caregiver should give you a fast-acting source of sugar (such as a regular soft drink or fruit juice) and a long-acting source of sugar (such as crackers and cheese or a meat sandwich).
- If you do not respond to treatment after 15 minutes, your caregiver may give you

another dose, if available.

Tell your healthcare provider each time you use GVOKE. Low blood sugar may happen again after receiving an injection of GVOKE. Your diabetes medicine may need to be changed.

How will I receive Gvoke VialDx?

- GVOKE VialDx will be given by a healthcare provider through a needle placed in your vein (IV infusion).

What are the possible side effects of GVOKE and Gvoke VialDx?

GVOKE and Gvoke VialDx may cause serious side effects, including:

- **high blood pressure.** GVOKE and Gvoke VialDx can cause high blood pressure in certain people with tumors in their adrenal glands.
- **low blood sugar.** GVOKE and Gvoke VialDx can cause low blood sugar in people with certain tumors in their pancreas called insulinomas by making too much insulin in their bodies. Signs and symptoms of low blood sugar may include:

- o sweating
- o drowsiness
- o dizziness
- o sleep disturbances
- o irregular heartbeat
- o anxiety
- o tremor
- o blurred vision
- o hunger
- o slurred speech
- o restlessness
- o depressed mood
- o tingling in the hands, feet, lips, or tongue
- o irritability
- o abnormal behavior
- o lightheadedness
- o unsteady movement
- o inability to concentrate
- o personality changes
- o headache

- **serious allergic reaction.** Serious allergic reactions have happened in some people using products with glucagon, the active ingredient in GVOKE and GVOKE VialDx. Stop using GVOKE and call your healthcare provider or get medical help right away if you have a serious allergic reaction. If you are receiving GVOKE VialDx for a radiology exam and have a serious allergic reaction, your healthcare provider will stop the IV infusion.

Symptoms of a serious allergic reaction include:

- o rash
- o difficulty breathing
- o low blood pressure

- **high blood sugar with GVOKE VialDx.** If you have diabetes and receive GVOKE VialDx before your radiology exam it can cause high blood sugar. Your healthcare provider will check your blood sugar levels during treatment with GVOKE VialDx.

- **heart problems with GVOKE VialDx.** If you have heart problems and receive GVOKE VialDx before your radiology exam, you may have an increase in your blood pressure and pulse while receiving GVOKE VialDx. This could be life threatening. Your healthcare provider will monitor your heart during treatment with GVOKE VialDx.

The most common side effects of GVOKE in adults include:

- nausea
- vomiting
- swelling at the injection site
- headache

The most common side effects of GVOKE in children include:

- o nausea
- o low blood sugar
- o high blood sugar
- o vomiting
- o abdominal pain
- o headache
- o pain or redness at the injection site
- o itching

The most common side effects of GVOKE VialDx include:

- o nausea
- o dizziness
- o change in the way foods taste or loss of taste (dysgeusia)
- o hot flush
- o headache

These are not all the possible side effects of GVOKE and GVOKE VialDX. Call your doctor for medical advice about side effects. You may report side effects to FDA at 1-800-FDA-1088.

How should I store GVOKE?

- Store GVOKE in the original container until time of use.
- Store at room temperature between 68°F to 77°F (20° C to 25°C).
- **Do not refrigerate or freeze.**

Keep GVOKE and all medicines out of the reach of children.

General information about the safe and effective use of GVOKE.

Medicines are sometimes prescribed for purposes other than those listed in a Patient Information leaflet. Do not use GVOKE for a condition for which it was not prescribed. Do not give GVOKE to other people, even if they have the same symptoms that you have. It may harm them. You can ask your pharmacist or healthcare provider for information about GVOKE that is written for health professionals.

What are the ingredients in GVOKE and GVOKE VialDx?

Active ingredient: glucagon.

Inactive ingredients: trehalose dihydrate NF, sulfuric acid NF, mannitol USP (kit only), and dimethyl sulfoxide.

GVOKE is distributed by: Xeris Pharmaceuticals, Inc., Chicago, IL

For more information go to www.xerispharma.com or call 1-877-937-4737.

GVOKE VialDx is distributed by American Regent, Inc.

This Patient Information has been approved by the U.S. Food and Drug Administration. Issued: 03/2025

1 mg Auto-Injector

NDC 72065-121-11

Gvoke HypoPen®

(glucagon injection)

Needle End

1 mg per 0.2 mL

For Subcutaneous Use Only
Single-Dose Auto-Injector

Lot: YYYXXXXX
Exp: YYYY-MM

Distributed by:
Xeris Pharmaceuticals, Inc.
Chicago, IL 60607
PCI Part #

Gvoke HypoPen®

(glucagon injection)

NDC 72065-121-11 R Only

Lot: YYYXXXXX
Exp: YYYY-MM

FOR LOW BLOOD SUGAR EMERGENCY

Contains 1 Single-Dose Auto-Injector
For Subcutaneous Use Only

See Patient Information for complete instructions.

See opposite side for quick guide instructions.
Each auto-injector contains 0.2 mL of solution for delivery of 1 mg of glucagon, 11.1 mg of trehalose dihydrate NF, 1.2 mg of 1N sulfuric acid in 209 mg dimethyl sulfoxide diluent.

Store in original sealed pouch until time of use.
Store at Controlled Room Temperature 20° to 25°C (68° to 77°F). Do not refrigerate or freeze.

Do not use after the expiration date.
Refill prescription after use or expiration and dispose of auto-injector properly.

For information call 1-877-937-4737 or visit www.GvokeHypoPen.com

Distributed by:
Xeris Pharmaceuticals, Inc.
Chicago, IL 60607



Gvoke HypoPen®

(glucagon injection)

1 mg per 0.2 mL

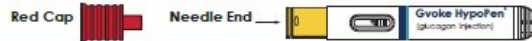
NDC 72065-121-11 R Only

Contains 1 Single-Dose Auto-Injector

FOR LOW BLOOD SUGAR EMERGENCY

1. Prepare Tear Open Pouch at Dotted Line. Remove Auto-Injector.		2. Inject Push Down on Skin to Start. Hold Down for 5 Seconds. Wait for Window to Turn Red.		3. Assist Turn Patient on Side. Call Emergency Medical Help.
		Lower Abdomen, Outer Thigh, or Outer Upper Arm	Hold Down for 5 Sec.	

After the injection, Put the Used Pen in a Safe Place Until It Can Be Disposed of Into a FDA Cleared Sharps Container.



Gvoke HypoPen[®]
(glucagon injection)

NDC 72065-121-11

R Only

1 mg per 0.2 mL

Single-Dose Auto-Injector

FOR LOW BLOOD SUGAR EMERGENCY

Contains 1 single-dose auto-injector

For Subcutaneous Use Only

See Patient Information for complete instructions



Gvoke HypoPen 1-Pack[™]



See back panel for quick guide instructions

Each auto-injector contains 0.2 mL of sterile solution delivering 1 mg of glucagon, 11.1 mg of trehalose dihydrate, 1.2 mg of 1N sulfuric acid in 209 mg dimethyl sulfoxide diluent.

Store in original sealed pouch until time of use. Store at Controlled Room Temperature 20° to 25°C (68° to 77°F) (see USP) with excursions allowed from 15° to 30°C (59° to 86°F) such as those that are experienced in pharmacies, hospitals, and warehouses.

Non-Returnable

Do not refrigerate or freeze.

Do not use after the expiration date. Refill prescription after use or expiration and dispose of auto-injector properly.

For information call 1-877-937-4737 or visit www.GvokeHypoPen.com

LOT: YXXXXXX
EXP: YYYY-MM
GTIN: 0000000000
SN: 1000000001

20
PART
No.

PCJ Part

1 mg per 0.2 mL
Single-Dose Auto-Injector

Gvoke HypoPen[®]
(glucagon injection)

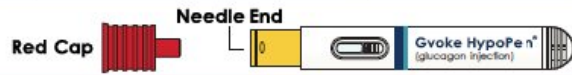
1 mg per 0.2 mL

Single-Dose Auto-Injector

FOR LOW BLOOD SUGAR EMERGENCY

1. Prepare	2. Inject	3. Assist
Tear Open Pouch at Dotted Line. Remove Auto-Injector.	Push Down on Skin to Start. Hold Down for 5 Seconds. Wait for Window to Turn Red.	Turn Patient on Side. Call Emergency Medical Help.
Choose Injection Site and Expose Skin. Front View. Back View. Lower Abdomen, Outer Thigh, or Outer Upper Arm.	Hold Down for 5 Sec.	

After the injection, Put the Used Pen in a Safe Place Until It Can Be Disposed of into a FDA Cleared Sharps Container.



NDC 72065-121-11
R Only

Place Pharmacy Patient Label Here

Distributed by:
Xeris Pharmaceuticals, Inc.
Chicago, IL 60607



Gvoke HypoPen[®]
(glucagon injection)

NDC 72065-121-12 Rx Only

1 mg per 0.2 mL

Single-Dose Auto-Injector

FOR LOW BLOOD SUGAR EMERGENCY

Contains 2 single-dose auto-injectors

For Subcutaneous Use Only

See Patient Information for complete instructions



Gvoke HypoPen 2-Pack[™]
xeris
PHARMACEUTICALS

See back panel for quick guide instructions

LOT: YYXXXXX
EXP: YYMM
CTR: 000000000
SN: 1000000001

PCI Part #

Gvoke HypoPen[®]
(glucagon injection)

NDC 72065-121-12 Rx Only

1 mg per 0.2 mL

Single-Dose Auto-Injector

FOR LOW BLOOD SUGAR EMERGENCY

1. Prepare

Tear Open Pouch at Dotted Line. Remove Auto-Injector.

Pull off Red Cap.

Choose Injection Site and Expose Skin.

Front View
Back View
Lower Abdomen, Outer Thigh, or Outer Upper Arm

2. Inject

Push Down on Skin to Start. Hold Down for 5 Seconds. Wait for Window to Turn Red.

Hold Down for 5 Sec.

3. Assist

Turn Patient on Side. Call Emergency Medical Help.

After the injection, Put the Used Pen in a Safe Place Until It Can Be Disposed of into a FDA Cleared Sharps Container.





Place Pharmacy Patient Label Here

Distributed by:
Xeris Pharmaceuticals, Inc.
Chicago, IL 60607

3 72065-121-12 0



0.5 mg Auto-Injector

NDC 72065-120-11

Gvoke HypoPen[®]
(glucagon injection)

Needle End

← 0.5 mg per 0.1 mL

For Subcutaneous Use Only
Single-Dose Auto-Injector

Lot: YYXXXXX
EXP: YYMM

Distributed by:
Xeris Pharmaceuticals, Inc.
Chicago, IL 60607
PCI Part #

Gvoke HypoPen[®]

(glucagon injection)

0.5 mg per 0.1 mL

NDC 72065-120-11

R Only

Lot YXXXXXX
Exp. YYYY-MM

FOR LOW BLOOD SUGAR EMERGENCY

Contains 1 Single-Dose Auto-Injector

For Subcutaneous Use Only

See Patient Information for complete instructions.

See opposite side for quick guide instructions.

Each auto-injector contains 0.1 mL of solution for delivery of 0.5 mg of glucagon, 5.6 mg of trehalose dihydrate NF, 0.6 mg of 1N sulfuric acid in 104 mg dimethyl sulfoxide diluent.

Store in original sealed pouch until time of use.

Store at Controlled Room Temperature 20° to 25°C (68° to 77°F). **Do not refrigerate or freeze.**

Do not use after the expiration date. Refill prescription after use or expiration and dispose of auto-injector properly.

For Information call 1-877-937-4737 or visit www.GvokeHypoPen.com

Distributed by:
Xeris Pharmaceuticals, Inc.
Chicago, IL 60607



3 72065-120-11 6



Gvoke HypoPen[®]

(glucagon injection)

0.5 mg per 0.1 mL

NDC 72065-120-11

R Only

Contains 1 Single-Dose Auto-Injector

FOR LOW BLOOD SUGAR EMERGENCY

1. Prepare

Tear Open Pouch at Dotted Line. Remove Auto-Injector.

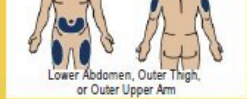


Pull off Red Cap.



2. Inject

Choose Injection Site and Expose Skin.



Push Down on Skin to Start. Hold Down for 5 Seconds. Wait for Window to Turn Red.



3. Assist

Turn Patient on Side. Call Emergency Medical Help.



After the Injection, Put the Used Pen in a Safe Place Until It Can Be Disposed of Into a FDA Cleared Sharps Container.

Red Cap



Needle End



Gvoke HypoPen[®]
(glucagon injection)

NDC 72065-120-11

Rx Only

0.5 mg per 0.1 mL

Single-Dose Auto-Injector

FOR LOW BLOOD SUGAR EMERGENCY

Contains 1 single-dose auto-injector

For Subcutaneous Use Only

See Patient Information for complete instructions



Gvoke HypoPen 1-Pack™



LOT: YXXXXXX
EXP: YYYY-MM
CTIN: 0000000000
SN: 1000000001

30
PAT
NO.

See back panel for quick guide instructions

Each auto-injector contains 0.1 mL of sterile solution delivering 0.5 mg of glucagon, 5.6 mg of trehalose dihydrate, 0.6 mg of 1N sulfuric acid in 104 mg dimethyl sulfoxide diluent.

Store in original sealed pouch until time of use.
Store at Controlled Room Temperature 20° to 25°C (68° to 77°F) [see USP] with excursions allowed from 15° to 30°C (59° to 86°F) such as those that are experienced in pharmacies, hospitals, and warehouses.
Non-Returnable

Do not refrigerate or freeze.
Do not use after the expiration date. Refill prescription after use or expiration and dispose of auto-injector properly.
For information call 1-877-937-4737 or www.GvokeHypoPen.com

PCI Pat#

0.5 mg per 0.1 mL
Single-Dose Auto-Injector

Gvoke HypoPen[®]
(glucagon injection)

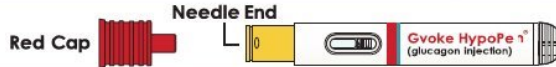
0.5 mg per 0.1 mL

Single-Dose Auto-Injector

FOR LOW BLOOD SUGAR EMERGENCY

<p>1. Prepare</p> <p>Tear Open Pouch at Dotted Line. Remove Auto-Injector.</p>	<p>2. Inject</p> <p>Push Down on Skin to Start. Hold Down for 5 Seconds. Wait for Window to Turn Red.</p>	<p>3. Assist</p> <p>Turn Patient on Side. Call Emergency Medical Help.</p>
---	--	---

After the injection, Put the Used Pen in a Safe Place Until it Can Be Disposed of into a FDA Cleared Sharps Container.



NDC 72065-120-11
Rx Only

Place Pharmacy Patient Label Here

Distributed by:
Xeris Pharmaceuticals, Inc.
Chicago, IL 60607



3 72065-120-11 6

Gvoke HypoPen®
(glucagon injection)

0.5 mg per 0.1 mL

Single-Dose Auto-Injector

FOR LOW BLOOD SUGAR EMERGENCY

Contains 2 single-dose auto-injectors

For Subcutaneous Use Only

See Patient Information for complete instructions



Gvoke HypoPen 2-Pack™
xeris
PHARMACEUTICALS

See back panel for quick guide instructions

Each auto-injector contains 0.1 mL of sterile solution delivering 0.5 mg of glucagon, 5.6 mg of trehalose dihydrate, 0.6 mg of 1N sulfuric acid in 104 mg dimethyl sulfoxide diluent.

Store in original sealed pouch until time of use.

Store at Controlled Room Temperature 20° to 25°C (68° to 77°F) [see USP] with excursions allowed from 15° to 30°C (59° to 86°F) such as those that are experienced in pharmacies, hospitals, and warehouses.

Non-Returnable

Do not refrigerate or freeze.

Do not use after the expiration date. Refill prescription after use or expiration and dispose of auto-injector properly.

For Information call **1-877-937-4737** or visit **www.GvokeHypoPen.com**

LOT: YXXXXXX
EXP: YYYY-MM
CTIN: 0000000000
SN: 1000000001

PCI Part #

Gvoke HypoPen®
(glucagon injection)
0.5 mg per 0.1 mL
Single-Dose Auto-Injector

Gvoke HypoPen®
(glucagon injection)

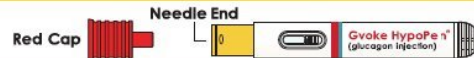
0.5 mg per 0.1 mL

Single-Dose Auto-Injector

FOR LOW BLOOD SUGAR EMERGENCY

<p>1. Prepare</p> <p>Tear Open Pouch at Dotted Line. Remove Auto-Injector.</p> <p>Pull off Red Cap</p> <p>Choose Injection Site and Expose Skin</p> <p>Front View Back View</p> <p>Lower Abdomen, Outer Thigh, or Outer Upper Arm</p>	<p>2. Inject</p> <p>Push Down on Skin to Start. Hold Down for 5 Seconds. Wait for Window to Turn Red.</p> <p>Hold Down for 5 Sec.</p>	<p>3. Assist</p> <p>Turn Patient on Side. Call Emergency Medical Help.</p>
--	--	---

After the Injection, Put the Used Pen in a Safe Place Until It Can Be Disposed of Into a FDA Cleared Sharps Container.



xeris
PHARMACEUTICALS

Place Pharmacy Patient Label Here

Distributed by:
Xeris Pharmaceuticals, Inc.
Chicago, IL 60607



NDC 72065-120-12
R Only

1 mg Pre-Filled Syringe

NDC 72065-131-11

Gvoke® PFS
(glucagon injection)

1 mg per 0.2 mL

For Subcutaneous Use Only
Single-dose pre-filled syringe

Lot: YXXXXXX	Distributed by: Xeris Pharmaceuticals, Inc. Chicago, IL 60607 PCI Part #
EXP: YYYY-MM	

Gvoke® PFS
(glucagon injection)

1 mg per 0.2 mL

NDC 72065-131-11 **Rx Only**

Lot: YXXXXX
Exp: YYY-MM

FOR LOW BLOOD SUGAR EMERGENCY

Contains 1 Single-Dose Pre-Filled Syringe

For Subcutaneous Use Only

See Patient Information for complete instructions.

See opposite side for quick guide instructions.

Each pre-filled syringe contains 0.2 mL of solution for delivery of 1 mg of glucagon, 11.1 mg of trehalose dihydrate NF, 1.2 mg of 1N sulfuric acid in 209 mg dimethyl sulfoxide diluent.

For Information call 1-877-937-4737 or visit www.GvokePFS.com

Store in original sealed pouch until time of use.

Store at Controlled Room Temperature 20° to 25°C (68° to 77°F). **Do not refrigerate or freeze.**

Do not use after the expiration date. Refill prescription after use or expiration and dispose of pre-filled syringe properly.

Distributed by:
Xeris Pharmaceuticals, Inc.
Chicago, IL 60607



Gvoke® PFS
(glucagon injection)

1 mg per 0.2 mL

NDC 72065-131-11 **Rx Only**

Contains 1 Single-Dose Pre-Filled Syringe

FOR LOW BLOOD SUGAR EMERGENCY

1. Prepare

Tear Open Pouch at Dotted Line. Remove Syringe.



Choose Injection Site and Expose Skin. Lower Abdomen, Outer Thighs, or Outer Upper Arm



Pull off Needle Cap. **Do NOT remove air bubbles.**



2. Inject

Pinch the Skin. Insert the Needle at 90 degrees. Push the Plunger Down to Inject.

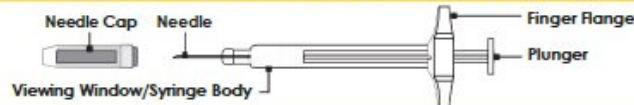


3. Assist

Turn Patient on Side. Call Emergency Medical Help.



After the Injection, Put the Used Syringe in a Safe Place Until It Can Be Disposed of Into a FDA Cleared Sharps Container. Do Not Recap the Syringe.



NDC 72065-131-11 Rx Only

Gvoke® PFS

(glucagon injection)

1 mg per 0.2 mL

Single-Dose Pre-Filled Syringe

FOR LOW BLOOD SUGAR EMERGENCY

LOT: A801124
 EXP: 11/14/16
 GTIN: 4200000000000
 SN: 10000000001

Contains 1 single-dose pre-filled syringe

For Subcutaneous Use Only

See Patient Information for complete instructions



Gvoke PFS 1-Pack™

xeris
PHARMACEUTICALS

See back panel for quick guide instructions

Each pre-filled syringe contains 0.2 mL of sterile solution delivering 1 mg of glucagon, 11.1 mg of trehalose dihydrate, 1.2 mg of 1N sulfuric acid in 209 mg dimethyl sulfoxide diluent.

Store in original sealed pouch until time of use.

Store at Controlled Room Temperature 20° to 25°C (68° to 77°F) [see USP] with excursions allowed from 15° to 30°C (59° to 86°F) such as those that are experienced in pharmacies, hospitals, and warehouses.

Non-Returnable

Do not refrigerate or freeze.

Do not use after the expiration date. Refill prescription after use or expiration and dispose of pre-filled syringe properly.

For information call 1-877-937-4737 or visit www.GvokePFS.com

1 mg per 0.2 mL
Single-Dose Pre-Filled Syringe

Gvoke® PFS
(glucagon injection)

1 mg per 0.2 mL
Single-Dose Pre-Filled Syringe


FOR LOW BLOOD SUGAR EMERGENCY

FOR LOW BLOOD SUGAR EMERGENCY

1. Prepare → **2. Inject** → **3. Assist**


1. Prepare

Tear Open Pouch at Dotted Line. Remove Syringe.




2. Inject

Pinch the Skin. Insert the Needle at 90 degrees. Push the Plunger Down to Inject.



3. Assist

Turn Patient on Side. Call Emergency Medical Help.

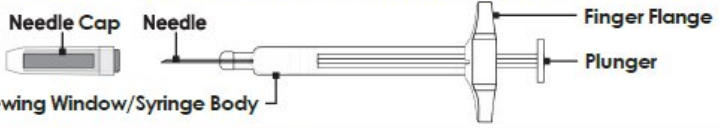


Choose injection Site and Expose Skin. Lower Abdomen, Outer Thighs, or Outer Upper Arm.

Front View Back View

Pull off Needle Cap. Do NOT remove air bubbles.

After the injection, Put the Used Syringe in a Safe Place Until It Can Be Disposed of into a FDA Cleared Sharps Container. Do Not Recap the Syringe.



NDC 72065-131-11 Rx Only

xeris
PHARMACEUTICALS

Place Pharmacy Patient Label Here

Distributed by:
Xeris Pharmaceuticals, Inc.
Chicago, IL 60607

3 72065-131-11 2




Gvoke® PFS
(glucagon injection)

1 mg per 0.2 mL
Single-Dose Pre-Filled Syringe


FOR LOW BLOOD SUGAR EMERGENCY

NDC 72065-131-12 Rx Only



LOT: ABC1234
EXP: YYXXMM
GPN: 00000000000000000000
SN: 00000000000000000000

Contains 2 single-dose pre-filled syringes
For Subcutaneous Use Only
See Patient Information for complete instructions



Gvoke PFS 2-Pack™
xeris
PHARMACEUTICALS

See back panel for quick guide instructions

Each pre-filled syringe contains 0.2 mL of sterile solution delivering 1 mg of glucagon, 11.1 mg of trehalose dihydrate, 1.2 mg of 1N sulfuric acid in 209 mg dimethyl sulfoxide diluent.

Store in original sealed pouch until time of use.
Store at Controlled Room Temperature 20° to 25°C (68° to 77°F) [see USP] with excursions allowed from 15° to 30°C (59° to 86°F) such as those that are experienced in pharmacies, hospitals, and warehouses.
Non-Returnable

Do not refrigerate or freeze.
Do not use after the expiration date. Refill prescription after use or expiration and dispose of pre-filled syringe properly.
For Information call 1-877-937-4737 or visit www.GvokePFS.com

Gvoke® PFS
(glucagon injection)


1 mg per 0.2 mL
Single-Dose Pre-Filled Syringe

FOR LOW BLOOD SUGAR EMERGENCY

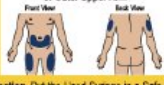
FOR LOW BLOOD SUGAR EMERGENCY

1. Prepare


Tear Open Pouch at Dotted Line. Remove Syringe.



Choose Injection Site and Expose Skin. Lower Abdomen, Outer Thighs, or Outer Upper Arm.




Pull off Needle Cap. Do NOT remove air bubbles.




2. Inject

Pinch the Skin. Insert the Needle at 90 degrees. Push the Plunger Down to Inject.

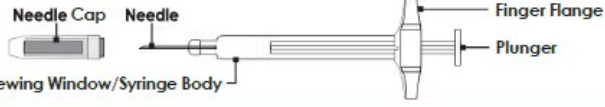


3. Assist

Turn Patient on Side. Call Emergency Medical Help.



After the Injection, Put the Used Syringe in a Safe Place Until It Can Be Disposed of Into a FDA Cleared Sharps Container. Do Not Recap the Syringe.




xeris
PHARMACEUTICALS

NDC 72065-131-12 Rx Only

Place Pharmacy Patient Label Here

Distributed by:
Xeris Pharmaceuticals, Inc.
Chicago, IL 60607

3 72065-131-12 9



1 mg Vial and Syringe Kit



Gvoke® Kit Rx Only

(glucagon injection)

1 mg per 0.2 mL

Single-Dose Vial—
Discard Unused Portion.
For subcutaneous use only.
Protect from light exposure.

NDC 72065-141-11

Distributed by: Xeris Pharmaceuticals, Inc.
Chicago, IL 60607

Lot: YYXXXXX
EXP: YYYY-MM

Tear Along Dotted Line

Contains one single-dose sterile syringe (29 G x 1/2" Needle), containing markings for 0.1 mL and 0.2 mL.

For Subcutaneous Use Only

Recommended Dosage: See Prescribing Information
See carton for Quick Guide Instructions

For use with Gvoke® vial only. Do not reuse.
Not made with natural rubber latex. Non-pyrogenic.

Do not use if the package is damaged.

Store vial and pouched syringe together in original carton until time of use. Do not remove syringe from pouch until time of use. Do not use after the expiration date.

Rx Only

STERILE

LOT: XXXXXX

EXP: YYYY-MM

PART 10034

Distributed by:
Xeats Pharmaceuticals, Inc.
Chicago, IL 60607



Contains one single-dose sterile syringe (29 G x 1/2" Needle) and one single-dose vial containing 0.2 mL of solution.

For Subcutaneous Use Only

Discard Unused Portion

Recommended Dosage:
See Prescribing Information

See inside for Quick Guide Instructions

FOR LOW BLOOD SUGAR EMERGENCY

Gvoke® Kit
(glucagon injection)

1 mg per 0.2mL

Single-Dose Vial and Syringe – Discard Unused Portion

NDC 72065-140-11 R Only

Each vial contains 0.2 mL of sterile solution to deliver 1 mg of glucagon, 11.1 mg of trihydrate, 1.32 mg of 1N sulfuric acid, 5.8 mg of mannitol in 205 mg dimethyl sulfoxide diluent.

Non-Returnable

Store kit together at Controlled Room Temperature, 20° to 25°C (68° to 77°F) [see USP] with excursions permitted to 15° and 30°C (59° and 86°F) such as those that are experienced in pharmacies, hospitals, and warehouses. Protect vial from light exposure.

Store vial and pouched syringe together in original carton until time of use. Do not refrigerate or freeze. Do not use after the expiration date. Refill prescription after use or expiration and dispose of properly.

For Information call 1-877-937-4737 or visit www.GvokeGlucagon.com

PCI PART NUMBER

Gvoke® Kit
(glucagon injection)

1 mg per 0.2mL

Single-Dose Vial and Syringe – Discard Unused Portion

NDC 72065-140-11 R Only

Gvoke® Kit
(glucagon injection)

1 mg per 0.2mL

Single-Dose Vial and Syringe – Discard Unused Portion

NDC 72065-140-11 R Only

FOR LOW BLOOD SUGAR EMERGENCY

Place Pharmacy Patient Label Here

LOT: ABGD1234
EXP: YYT-AM
GTIN: 00000000000000
SN: 10000000000001

2D

Distributed by:
Xerus Pharmaceuticals, Inc.
Chicago, IL 60607

NDC 72065-140-11 R Only

3 72065 140114



Gvoke® Kit
(glucagon injection)

Single-Dose Vial and Syringe – Discard Unused Portion

1 mg per 0.2 mL

QUICK GUIDE INSTRUCTIONS

1. Prepare

Important: Do not use the Gvoke vial if the expiration date has passed. If the Gvoke vial is expired, discard and use a new GVOKE KIT. If you do not have another GVOKE KIT to use call for emergency medical help right away.

Important: Do not use Gvoke or inject if the liquid contains lumps, flakes, or particles.

Flip Blue Cap Off Vial



Tear Open Pouch at Dotted Line. Remove Syringe



2. Draw Dose

Pull Needle Cap Off Syringe



Fully Insert Needle Into Vial



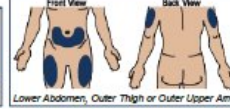
Flip Vial and Syringe so Vial is on Top



Slowly Draw Dose Into Syringe



Choose Injection Site and Expose Skin.



0.1 mL for Pediatric Dose

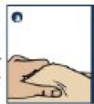


0.2 mL for Adult Dose



3. Inject

- a. Pinch Skin.
- b. Insert Needle at 90 Degrees.
- c. Push Plunger Down to Inject.



4. Assist

Turn Patient On Side. Call Emergency Medical Help.



5. Dispose

After the Injection, discard unused medication and place the used syringe in a safe place until it can be disposed of in an FDA-cleared sharps container. Do not recap the syringe.

GVOKE HYPOPEN 1 MG AUTO-INJECTOR

glucagon injection, solution injection, solution

Product Information

Product Type	HUMAN PRESCRIPTION DRUG	Item Code (Source)	NDC:72065-121
Route of Administration	SUBCUTANEOUS		

Active Ingredient/Active Moiety

Ingredient Name	Basis of Strength	Strength
GLUCAGON (UNII: 76LA80IG2G) (GLUCAGON - UNII:76LA80IG2G)	GLUCAGON	1 mg in 0.2 mL

Inactive Ingredients

Ingredient Name	Strength
SULFURIC ACID (UNII: O40UQP6WCF)	
DIMETHYL SULFOXIDE (UNII: YOW8V9698H)	

Packaging

#	Item Code	Package Description	Marketing Start Date	Marketing End Date
1	NDC:72065-121-11	1 in 1 CARTON	09/10/2019	
1		1 in 1 POUCH		
1		0.2 mL in 1 SYRINGE, PLASTIC; Type 2: Prefilled Drug Delivery Device/System (syringe, patch, etc.)		
2	NDC:72065-121-12	2 in 1 CARTON	09/10/2019	
2		1 in 1 POUCH		
2		0.2 mL in 1 SYRINGE, PLASTIC; Type 2: Prefilled Drug Delivery Device/System (syringe, patch, etc.)		

Marketing Information

Marketing Category	Application Number or Monograph Citation	Marketing Start Date	Marketing End Date
NDA	NDA212097	09/10/2019	

GVOKE HYPOPEN 0.5 MG AUTO-INJECTOR

glucagon injection, solution injection, solution

Product Information

Product Type	HUMAN PRESCRIPTION DRUG	Item Code (Source)	NDC:72065-120
Route of Administration	SUBCUTANEOUS		

Active Ingredient/Active Moiety

Ingredient Name	Basis of Strength	Strength
GLUCAGON (UNII: 76LA80IG2G) (GLUCAGON - UNII:76LA80IG2G)	GLUCAGON	0.5 mg in 0.1 mL

Inactive Ingredients

Ingredient Name	Strength
SULFURIC ACID (UNII: O40UQP6WCF)	
DIMETHYL SULFOXIDE (UNII: YOW8V9698H)	

Packaging

#	Item Code	Package Description	Marketing Start Date	Marketing End Date
---	-----------	---------------------	----------------------	--------------------

1	NDC:72065-120-11	1 in 1 CARTON	09/10/2019	
1		1 in 1 POUCH		
1		0.1 mL in 1 SYRINGE, PLASTIC; Type 2: Prefilled Drug Delivery Device/System (syringe, patch, etc.)		
2	NDC:72065-120-12	2 in 1 CARTON	09/10/2019	
2		1 in 1 POUCH		
2		0.1 mL in 1 SYRINGE, PLASTIC; Type 2: Prefilled Drug Delivery Device/System (syringe, patch, etc.)		

Marketing Information

Marketing Category	Application Number or Monograph Citation	Marketing Start Date	Marketing End Date
NDA	NDA212097	09/10/2019	

GVOKE PFS 1 MG PRE-FILLED SYRINGE

glucagon injection, solution injection, solution

Product Information

Product Type	HUMAN PRESCRIPTION DRUG	Item Code (Source)	NDC:72065-131
Route of Administration	SUBCUTANEOUS		

Active Ingredient/Active Moiety

Ingredient Name	Basis of Strength	Strength
GLUCAGON (UNII: 76LA80IG2G) (GLUCAGON - UNII:76LA80IG2G)	GLUCAGON	1 mg in 0.2 mL

Inactive Ingredients

Ingredient Name	Strength
SULFURIC ACID (UNII: O40UQP6WCF)	
DIMETHYL SULFOXIDE (UNII: YOW8V9698H)	

Packaging

#	Item Code	Package Description	Marketing Start Date	Marketing End Date
1	NDC:72065-131-11	1 in 1 CARTON	09/10/2019	
1		1 in 1 POUCH		
1		0.2 mL in 1 SYRINGE, PLASTIC; Type 2: Prefilled Drug Delivery Device/System (syringe, patch, etc.)		
2	NDC:72065-131-12	2 in 1 CARTON	09/10/2019	
2		1 in 1 POUCH		
2		0.2 mL in 1 SYRINGE, PLASTIC; Type 2: Prefilled Drug Delivery Device/System (syringe, patch, etc.)		
3	NDC:72065-131-99	1 in 1 CARTON	10/28/2019	01/30/2023
3		1 in 1 POUCH		

3	0.2 mL in 1 SYRINGE, PLASTIC; Type 2: Prefilled Drug Delivery Device/System (syringe, patch, etc.)		
---	--	--	--

Marketing Information

Marketing Category	Application Number or Monograph Citation	Marketing Start Date	Marketing End Date
NDA	NDA212097	09/10/2019	

GVOKE PFS 0.5 MG PRE-FILLED SYRINGE

glucagon injection, solution injection, solution

Product Information

Product Type	HUMAN PRESCRIPTION DRUG	Item Code (Source)	NDC:72065-130
Route of Administration	SUBCUTANEOUS		

Active Ingredient/Active Moiety

Ingredient Name	Basis of Strength	Strength
GLUCAGON (UNII: 76LA80IG2G) (GLUCAGON - UNII:76LA80IG2G)	GLUCAGON	0.5 mg in 0.1 mL

Inactive Ingredients

Ingredient Name	Strength
SULFURIC ACID (UNII: O40UQP6WCF)	
DIMETHYL SULFOXIDE (UNII: YOW8V9698H)	

Packaging

#	Item Code	Package Description	Marketing Start Date	Marketing End Date
1	NDC:72065-130-99	1 in 1 CARTON	10/28/2019	01/30/2023
1		1 in 1 POUCH		
1		0.1 mL in 1 SYRINGE, PLASTIC; Type 2: Prefilled Drug Delivery Device/System (syringe, patch, etc.)		

Marketing Information

Marketing Category	Application Number or Monograph Citation	Marketing Start Date	Marketing End Date
NDA	NDA212097	09/10/2019	01/30/2023

GVOKE KIT VIAL

glucagon injection, solution injection, solution

Product Information

Product Type	HUMAN PRESCRIPTION DRUG	Item Code (Source)	NDC:72065-141	
Route of Administration	SUBCUTANEOUS			
Active Ingredient/Active Moiety				
	Ingredient Name	Basis of Strength	Strength	
	GLUCAGON (UNII: 76LA80IG2G) (GLUCAGON - UNII:76LA80IG2G)	GLUCAGON	1 mg in 0.2 mL	
Packaging				
#	Item Code	Package Description	Marketing Start Date	Marketing End Date
1	NDC:72065-141-11	0.2 mL in 1 VIAL, GLASS; Type 0: Not a Combination Product	10/11/2021	
Marketing Information				
Marketing Category	Application Number or Monograph Citation	Marketing Start Date	Marketing End Date	
NDA	NDA212097	10/11/2021		

GVOKE KIT				
glucagon injection, solution injection, solution				
Product Information				
Product Type	HUMAN PRESCRIPTION DRUG	Item Code (Source)	NDC:72065-140	
Route of Administration	SUBCUTANEOUS			
Active Ingredient/Active Moiety				
	Ingredient Name	Basis of Strength	Strength	
	GLUCAGON (UNII: 76LA80IG2G) (GLUCAGON - UNII:76LA80IG2G)	GLUCAGON	1 mg in 0.2 mL	
Packaging				
#	Item Code	Package Description	Marketing Start Date	Marketing End Date
1	NDC:72065-140-11	0.2 mL in 1 CARTON; Type 1: Convenience Kit of Co-Package	10/11/2021	
Marketing Information				
Marketing Category	Application Number or Monograph Citation	Marketing Start Date	Marketing End Date	
NDA	NDA212097	10/11/2021		

Revised: 3/2025

Xeris Pharmaceuticals, Inc.