

**REPOVE R.E.P- glycerin cream**  
**Binotec Co., Ltd.**

*Disclaimer: Most OTC drugs are not reviewed and approved by FDA, however they may be marketed if they comply with applicable regulations and policies. FDA has not evaluated whether this product complies.*

-----

**Drug Facts**

Glycerin

Eucalyptus Globulus Leaf Water

Laurus Nobilis Leaf Water

Butylene Glycol

Water

1,2-Hexanediol

Propanediol

Macadamia Ternifolia Seed Oil

Simmondsia Chinensis (Jojoba) Seed Oil

Propylene Glycol Dibenzoate

Heptyl Undecylenate

Niacinamide

Cyclodextrin

Sorbitol

Rosa Canina Fruit Oil

Adenosine

Polyglyceryl-10 Oleate

Glyceryl Distearate

Caprylic/Capric Triglyceride

Alcohol

Hydrogenated lecithin

Cholesterol

Ubiquinone

Thioctic Acid

Glutathione

Tocopherol

Ascorbic Acid

Copper Tripeptide-1

Palmitoyl Pentapeptide-4

Acetyl Hexapeptide-8

Palmitoyl Tripeptide-5

Alanine/Histidine/Lysine Polypeptide Copper HCl

Cetearyl Stearate

Hydrogenated Polydecene

Trideceth-10

Polyglyceryl-3 Diisostearate

Sorbitan Stearate

Glyceryl Stearate

Polyglyceryl-2 Stearate

Stearyl Alcohol

Carbomer

Sodium Chloride

Sodium Polyacryloyldimethyl Taurate

Ammonium Acryloyldimethyltaurate/Beheneth-25 Methacrylate Crosspolymer

lanthus Emblica Fruit Extract  
Rubus Fruticosus (Blackberry) Fruit Extract  
Euterpe Oleracea Fruit Extract  
Rubus Idaeus (Raspberry) Fruit Extract  
ium Angustifolium (Blueberry) Fruit Extract  
Vaccinium Myrtillus Fruit Extract  
Vaccinium Macrocarpon (Cranberry) Fruit Extract  
Camellia Sinensis Leaf Extract  
Solanum Tuberosum (Potato) Pulp Extract  
Origanum Vulgare Leaf Extract  
Mentha Viridis (Spearmint) Extract  
Melissa Officinalis Extract  
Pinus Koraiensis Seed Extract  
Hovenia Dulcis Fruit Extract  
Thuja Orientalis Seed Extract  
Ginkgo Biloba Nut Extract  
Myrciaria Dubia Seed Extract  
Terminalia Ferdinandiana Fruit Extract  
Adansonia Digitata Seed Extract  
Coffea Arabica (Coffee) Seed Extract  
Aleurites Moluccana Seed Extract  
Macadamia Ternifolia Seed Extract  
Madecassoside  
Dimethyl Sulfone  
Morinda Citrifolia Extract  
Sodium Hyaluronate  
Disodium EDTA  
sh-Oligopeptide-1  
sh-Polypeptide-1  
sh-Polypeptide-3  
Histidine  
Arginine  
Aspartic Acid  
Threonine  
Serine  
Glutamic Acid  
Proline  
Glycine  
Alanine  
Valine  
Methionine  
Isoleucine  
Leucine  
Tyrosine  
Phenylalanine  
Lysine  
Cysteine  
Panax Ginseng Callus Culture Extract  
Nelumbo Nucifera Callus Culture Extract  
Solanum Lycopersicum (Tomato) Callus Culture Extract  
Neofinetia Falcata Callus Culture Extract  
Oryza Sativa (Rice) Callus Culture Extract  
Ipomoea Hederacea Callus Culture Extract

Ethylhexylglycerin

Skin protectant

keep out of reach of the children

Depending on the skin type, take an appropriate amount with the enclosed spatula and apply on the face.

for external use only

If skin shows the following reactions while using 3G AB\_Solution, reduce the amount of use drastically or discontinue use.

1. If itching continues for 7-10 days
2. If skin experiences a burning sensation or becomes reddish (dry skin type, particularly extremely dry skin)
3. If dead skin cells are generated drastically

\* If you are receiving skin treatment due to skin diseases consult your doctor before use.

**제작사양 송부 및 샘플 제작 요청**

제품명 : 리포브 크림 박스  
 제작사양 : 플루 스크린 (텍스트 및 로고, 그래픽러인)  
 그래픽 : 스크린 (텍스트)  
 유광인쇄 (상면)  
 은별색 (상면 - 속지)  
 UV부분코팅

- PANTONE 286C
- CO M0 Y0 K35
- CO M0 Y0 K0
- ▨ 은박
- ▨ 은별색

하단상자

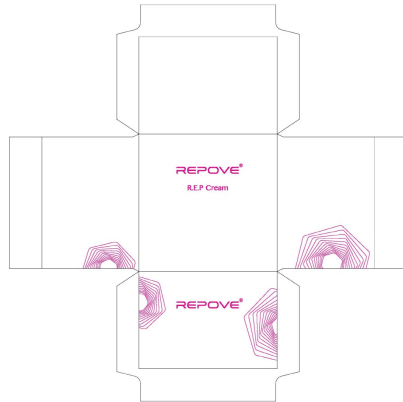


뚜껑 겉면

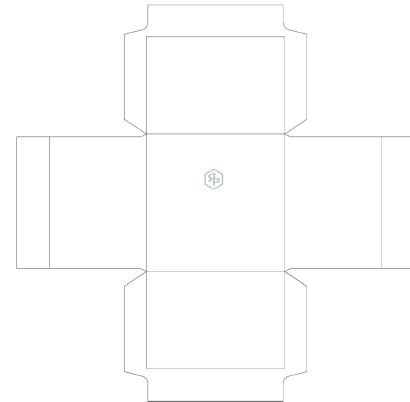


뚜껑 속지

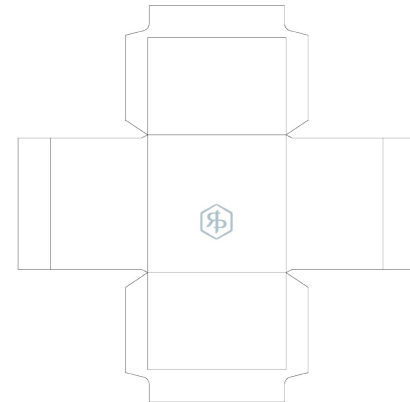
부분코팅위치



은별색인쇄



은별색인쇄



**REPOVE R.E.P**  
 glycerin cream

**Product Information**

<b>Product Type</b>	HUMAN OTC DRUG	<b>Item Code (Source)</b>	NDC:73345-0030
---------------------	----------------	---------------------------	----------------

Route of Administration TOPICAL

### Active Ingredient/Active Moiety

Ingredient Name	Basis of Strength	Strength
GLYCERIN (UNII: PDC6A3C0OX) (GLYCERIN - UNII:PDC6A3C0OX)	GLYCERIN	4 g in 100 g

### Inactive Ingredients

Ingredient Name	Strength
WATER (UNII: 059QF0KO0R)	
ADENOSINE (UNII: K72T3FS567)	

### Packaging

#	Item Code	Package Description	Marketing Start Date	Marketing End Date
1	NDC:73345-0030-1	50 g in 1 JAR; Type 0: Not a Combination Product	08/01/2019	

### Marketing Information

Marketing Category	Application Number or Monograph Citation	Marketing Start Date	Marketing End Date
OTC monograph not final	part347	08/01/2019	

**Labeler** - Binotec Co., Ltd. (689840563)

**Registrant** - Binotec Co., Ltd. (689840563)

### Establishment

Name	Address	ID/FEI	Business Operations
reBom cosmetics co.,Ltd		688733595	pack(73345-0030) , manufacture(73345-0030)

### Establishment

Name	Address	ID/FEI	Business Operations
Binotec Co., Ltd.		689840563	label(73345-0030)

Revised: 9/2019

Binotec Co., Ltd.