

EPANED- enalapril maleate
Silvergate Pharmaceuticals, Inc.

HIGHLIGHTS OF PRESCRIBING INFORMATION

These highlights do not include all the information needed to use EPANED[®] safely and effectively. See full prescribing information for EPANED.

EPANED (enalapril maleate) for Oral Solution

Initial U.S. Approval: 1985

WARNING: FETAL TOXICITY

See full prescribing information for complete boxed warning

- **When pregnancy is detected, discontinue EPANED as soon as possible. (5.1)**
- **Drugs that act directly on the renin-angiotensin system can cause injury and death to the developing fetus. (5.1)**

----- **RECENT MAJOR CHANGES** -----

Dosage and Administration (2) 3/2017

Contraindications (4) 7/2017

----- **INDICATIONS AND USAGE** -----

EPANED is an angiotensin-converting enzyme inhibitor indicated for:

- treatment of hypertension in adults and children older than one month, to lower blood pressure. Lowering blood pressure reduces the risk of fatal and nonfatal cardiovascular events, primarily strokes and myocardial infarctions. (1.1)
- treatment of symptomatic heart failure. (1.2)
- treatment of asymptomatic left ventricular dysfunction, to decrease the rate of development of overt heart failure and reduce hospitalization for heart failure (1.3)

----- **DOSAGE AND ADMINISTRATION** -----

Hypertension

- Adult: recommended initial dose is 5 mg once daily. Maximum dose is 40 mg daily. (2.1)
- Pediatrics: recommended starting dose is 0.08 mg/kg (up to 5 mg) once daily. (2.1)

Heart Failure: Initiate at 2.5 mg twice daily. Titrate up to 20 mg twice daily as tolerated. (2.2)

Asymptomatic Left Ventricular Dysfunction: Initiate at 2.5 mg twice daily. Titrate up to 10 mg twice daily. (2.3)

----- **DOSAGE FORMS AND STRENGTHS** -----

EPANED Powder for Oral Solution contains 150 mg of enalapril maleate in a 150 mL bottle. Reconstitution with 150 mL of ORA-SWEET[®] SF provided results in a 1 mg/mL EPANED oral solution. (3)

----- **CONTRAINDICATIONS** -----

- Hypersensitivity related to previous treatment with an ACEI. (4)
- Hereditary or idiopathic angioedema. (4)
- Do not co-administer aliskiren in patients with diabetes. (4)
- In combination with a neprilysin inhibitor. (4)

----- **WARNINGS AND PRECAUTIONS** -----

- Angioedema and Anaphylactoid Reactions. (5.2)
- Impaired Renal Function: Assess renal function. (5.5)
- Hyperkalemia. (5.6)

----- **ADVERSE REACTIONS** -----

- The most common adverse reaction for patients treated for hypertension ($\geq 3\%$) was fatigue (6.1).

- The most common adverse reactions for patients treated for heart failure (>6%) were hypotension and dizziness (6.1)

To report SUSPECTED ADVERSE REACTIONS, contact Silvergate Pharmaceuticals at 1-855-379-0383 or FDA at 1-800-FDA-1088 or www.fda.gov/medwatch

----- **DRUG INTERACTIONS** -----

- In patients who are elderly, volume-depleted (as on diuretic therapy), or with compromised renal function, use with NSAIDs, including selective COX-2 inhibitors, may result in deterioration of renal function, including renal failure. Monitor renal function periodically. (7.1)
- Dual inhibition of the renin-angiotensin system: Increased risk of renal impairment, hypotension and hyperkalemia. (7.2)
- Avoid potassium sparing agents in patients with heart failure. (7.3)
- Monitor serum lithium levels frequently. (7.4)

----- **USE IN SPECIFIC POPULATIONS** -----

- EPANED is not recommended in neonates and in pediatric patients with glomerular filtration rate <30 mL/min/1.73m². (8.4)
- Lactation: Advise not to breastfeed. (8.2)

See 17 for **PATIENT COUNSELING INFORMATION**.

Revised: 5/2018

FULL PRESCRIBING INFORMATION: CONTENTS*

WARNING: FETAL TOXICITY

1 INDICATIONS AND USAGE

- 1.1 Hypertension
- 1.2 Heart Failure
- 1.3 Asymptomatic Left Ventricular Dysfunction

2 DOSAGE AND ADMINISTRATION

- 2.1 Hypertension
- 2.2 Heart Failure
- 2.3 Asymptomatic Left Ventricular Dysfunction
- 2.4 Preparation of EPANED (for 150 mL, 1 mg/mL enalapril solution)

3 DOSAGE FORMS AND STRENGTHS

4 CONTRAINDICATIONS

5 WARNINGS AND PRECAUTIONS

- 5.1 Fetal Toxicity
- 5.2 Angioedema and Anaphylactoid Reactions
- 5.3 Hypotension
- 5.4 Hepatic Failure
- 5.5 Impaired Renal Function
- 5.6 Hyperkalemia

6 ADVERSE REACTIONS

- 6.1 Clinical Trials Experience
- 6.2 Other Adverse Reactions from Clinical Studies or Postmarketing Experience

7 DRUG INTERACTIONS

- 7.1 Non-Steroidal Anti-Inflammatory Agents (NSAIDs) Including Selective Cyclooxygenase-2 Inhibitors (COX-2 Inhibitors)
- 7.2 Dual Blockade of the Renin-Angiotensin System (RAS)
- 7.3 Agents Increasing Serum Potassium
- 7.4 Lithium

- 7.5 Gold
- 7.6 mTOR Inhibitors
- 7.7 Neprilysin Inhibitor

8 USE IN SPECIFIC POPULATIONS

- 8.1 Pregnancy
- 8.2 Lactation
- 8.4 Pediatric Use
- 8.5 Geriatric Use
- 8.6 Race
- 8.7 Renal Impairment

10 OVERDOSAGE

11 DESCRIPTION

12 CLINICAL PHARMACOLOGY

- 12.1 Mechanism of Action
- 12.2 Pharmacodynamics
- 12.3 Pharmacokinetics

13 NONCLINICAL TOXICOLOGY

- 13.1 Carcinogenesis, Mutagenesis, Impairment of Fertility
- 13.2 Animal Toxicology and/or Pharmacology

14 CLINICAL STUDIES

- 14.1 Heart Failure, Mortality Trials

16 HOW SUPPLIED/STORAGE AND HANDLING

17 PATIENT COUNSELING INFORMATION

* Sections or subsections omitted from the full prescribing information are not listed.

FULL PRESCRIBING INFORMATION

WARNING: FETAL TOXICITY

- **When pregnancy is detected, discontinue EPANED[®] as soon as possible. [See Warnings and Precautions (5.1)]**
- **Drugs that act directly on the renin-angiotensin system can cause injury and death to the developing fetus. [See Warnings and Precautions (5.1)]**

1 INDICATIONS AND USAGE

1.1 Hypertension

EPANED is indicated for the treatment of hypertension, to lower blood pressure in adults and children older than one month [see *Pediatric Use (8.4) and Clinical Studies (14)*].

Lowering blood pressure reduces the risk of fatal and nonfatal cardiovascular events, primarily strokes and myocardial infarctions. These benefits have been seen in controlled trials of antihypertensive drugs from a wide variety of pharmacologic classes including this drug.

Control of high blood pressure should be part of comprehensive cardiovascular risk management, including, as appropriate, lipid control, diabetes management, antithrombotic therapy, smoking cessation, exercise, and limited sodium intake. Many patients will require more than one drug to achieve blood pressure goals. For specific advice on goals and management, see published guidelines, such as those

of the National High Blood Pressure Education Program's Joint National Committee on Prevention, Detection, Evaluation, and Treatment of High Blood Pressure (JNC).

Numerous antihypertensive drugs, from a variety of pharmacologic classes and with different mechanisms of action, have been shown in randomized controlled trials to reduce cardiovascular morbidity and mortality, and it can be concluded that it is blood pressure reduction, and not some other pharmacologic property of the drugs, that is largely responsible for those benefits. The largest and most consistent cardiovascular outcome benefit has been a reduction in the risk of stroke, but reductions in myocardial infarction and cardiovascular mortality also have been seen regularly.

Elevated systolic or diastolic pressure causes increased cardiovascular risk, and the absolute risk increase per mmHg is greater at higher blood pressures, so that even modest reductions of severe hypertension can provide substantial benefit. Relative risk reduction from blood pressure reduction is similar across populations with varying absolute risk, so the absolute benefit is greater in patients who are at higher risk independent of their hypertension (for example, patients with diabetes or hyperlipidemia), and such patients would be expected to benefit from more aggressive treatment to a lower blood pressure goal.

Some antihypertensive drugs have smaller blood pressure effects (as monotherapy) in Black patients, and many antihypertensive drugs have additional approved indications and effects (e.g., on angina, heart failure, or diabetic kidney disease). These considerations may guide selection of therapy.

EPANED is effective alone or in combination with other antihypertensive agents, especially thiazide-type diuretics. The blood pressure lowering effects of EPANED and thiazides are approximately additive.

1.2 Heart Failure

EPANED is indicated for the treatment of symptomatic heart failure, usually in combination with diuretics and digitalis. In these patients, EPANED increases survival and decreases the frequency of hospitalization.

1.3 Asymptomatic Left Ventricular Dysfunction

In clinically stable asymptomatic patients with left ventricular dysfunction (ejection fraction ≤ 35 percent), EPANED decreases the rate of development of overt heart failure and decreases the incidence of hospitalization for heart failure.

2 DOSAGE AND ADMINISTRATION

2.1 Hypertension

Adults: The recommended initial dose in adults is 5 mg taken orally once a day. Titrate upward to maximum of 40 mg daily as needed to help achieve blood pressure goals. The dose may be divided and administered twice daily if the antihypertensive effect diminishes at the end of the dosing interval.

Use with diuretics: If additional blood pressure reduction is needed, EPANED may be administered with a low dose of diuretic. The recommended initial dose in patients taking diuretics is 2.5 mg daily.

Dosage Adjustment for Renal Impairment: See table below. The dosage may be titrated upward as needed to a maximum of 40 mg daily.

Renal Status	Creatinine-Clearance mL/min	Initial Dose mg/day
Normal or Mild Impairment of Renal Function	>30 mL/min	5 mg
Moderate to Severe Impairment	≤ 30 mL/min	2.5 mg

* [See *Warnings and Precautions (5.2)*].

† Should be taken after hemodialysis on dialysis days [see *Clinical Pharmacology (12.3)*]. Calculated using ideal body weight.

Children greater than 1 month of age: The usual recommended starting dose is 0.08 mg/kg (up to 5 mg) once daily. Adjust dose based on blood pressure response. Doses above 0.58 mg/kg (or in excess of 40 mg) have not been studied in pediatric patients [see *Clinical Pharmacology (12.3)*].

EPANED is not recommended in neonates (i.e., infants 1 month of age or less), preterm infants who have not reached a corrected post-conceptual age of 44 weeks, and in pediatric patients with glomerular filtration rate <30 mL/min/1.73 m².

2.2 Heart Failure

Generally, the recommended initial dose is 2.5 mg twice a day titrated up to a maximum of 20 mg twice a day, as tolerated. Doses are usually given in combination with diuretics and digitalis.

In patients with hyponatremia (serum sodium less than 130 mEq/L) or serum creatinine greater than 1.6 mg/dL, the recommended initial dose is 2.5 mg once daily.

Diuretic dose may need to be adjusted to minimize hypovolemia and hypotension. The appearance of hypotension after the initial dose of EPANED does not preclude subsequent careful dose titration with the drug, following effective management of the hypotension.

2.3 Asymptomatic Left Ventricular Dysfunction

The recommended initial dose is 2.5 mg twice a day titrated up to a maximum of 10 mg twice a day, as tolerated. Diuretic dose may need to be adjusted [see *Dosage and Administration (2.1)*].

2.4 Preparation of EPANED (for 150 mL, 1 mg/mL enalapril solution)

EPANED Powder for Oral Solution is a kit containing 1 bottle of enalapril powder and 1 bottle of Ora-Sweet SF diluent to be added to the enalapril powder prior to dispensing to the patient.

Firmly tap the EPANED Powder for Oral Solution bottle on a hard surface 5 times. Add approximately one-half (75 mL) of the Ora-Sweet SF diluent to the 150 mL EPANED Powder for Oral Solution bottle. Replace the child-resistant cap. Shake well for 30 seconds. Reopen. Add the remainder of the Ora-Sweet SF diluent to the EPANED Powder for Oral Solution bottle, replace the child-resistant cap and shake well for an additional 30 seconds. Calculate 60 days from the date of reconstitution. Write this date as the discard date on the front of the label. Affix a “Do Not Use After” or a “Discard After” label with the calculated date added to the reconstituted EPANED bottle.

3 DOSAGE FORMS AND STRENGTHS

EPANED Powder for Oral Solution is a kit that contains 150 mg of enalapril maleate in a 150-mL bottle and Ora-Sweet SF diluent. Reconstitution with 150 mL of the provided Ora-Sweet SF diluent results in a 1 mg/mL EPANED oral solution.

4 CONTRAINDICATIONS

EPANED is contraindicated in patients with:

- a history of angioedema or hypersensitivity related to previous treatment with an angiotensin converting enzyme (ACE) inhibitor [see *Warnings and Precautions (5.2)*]
- hereditary or idiopathic angioedema [see *Warnings and Precautions (5.2)*].

Do not co-administer aliskiren with EPANED in patients with diabetes [*see Drug Interactions (7.2)*].

EPANED is contraindicated in combination with a neprilysin inhibitor (e.g., sacubitril). Do not administer EPANED within 36 hours of switching to or from sacubitril/valsartan, a neprilysin inhibitor [*see Warnings and Precautions (5.2)*].

5 WARNINGS AND PRECAUTIONS

5.1 Fetal Toxicity

Use of drugs that act on the renin-angiotensin system during the second and third trimesters of pregnancy reduces fetal renal function and increases fetal and neonatal morbidity and death. Resulting oligohydramnios can be associated with fetal lung hypoplasia and skeletal deformations. Potential neonatal adverse effects include skull hypoplasia, anuria, hypotension, renal failure, and death. When pregnancy is detected, discontinue EPANED as soon as possible [*see Use in Specific Populations (8.1)*].

5.2 Angioedema and Anaphylactoid Reactions

Angioedema

Head and Neck Angioedema

Angioedema of the face, extremities, lips, tongue, glottis and/or larynx, including some fatal reactions, have occurred in patients treated with angiotensin converting enzyme inhibitors, including EPANED, at any time during treatment. Patients with involvement of the tongue, glottis or larynx are likely to experience airway obstruction, especially those with a history of airway surgery. EPANED should be promptly discontinued and appropriate therapy and monitoring should be provided until complete and sustained resolution of signs and symptoms of angioedema has occurred.

Patients with a history of angioedema unrelated to ACE inhibitor therapy may be at increased risk of angioedema while receiving an ACE inhibitor [*see Contraindications (4)*]. ACE inhibitors have been associated with a higher rate of angioedema in black than in non-black patients.

Patients receiving coadministration of ACE inhibitor and mTOR (mammalian target of rapamycin) inhibitor (e.g., temsirolimus, sirolimus, everolimus) therapy or a neprilysin inhibitor may be at increased risk of angioedema [*see Drug Interactions (7.6, 7.7)*].

Intestinal Angioedema

Intestinal angioedema has occurred in patients treated with ACE inhibitors. These patients presented with abdominal pain (with or without nausea or vomiting); in some cases there was no prior history of facial angioedema and C-1 esterase levels were normal. In some cases, the angioedema was diagnosed by procedures including abdominal CT scan or ultrasound, or at surgery, and symptoms resolved after stopping the ACE inhibitor.

Anaphylactoid Reactions

Anaphylactoid Reactions during Desensitization

Two patients undergoing desensitizing treatment with hymenoptera venom while receiving ACE inhibitors sustained life-threatening anaphylactoid reactions.

Anaphylactoid Reactions during Dialysis

Sudden and potentially life-threatening anaphylactoid reactions have occurred in some patients dialyzed with high-flux membranes and treated concomitantly with an ACE inhibitor. In such patients, dialysis must be stopped immediately, and aggressive therapy for anaphylactoid reactions must be initiated. Symptoms have not been relieved by antihistamines in these situations. In these patients, consideration should be given to using a different type of dialysis membrane or a different class of antihypertensive agent. Anaphylactoid reactions have also been reported in patients undergoing low-density lipoprotein

apheresis with dextran sulfate absorption.

5.3 Hypotension

EPANED can cause symptomatic hypotension, sometimes complicated by oliguria, progressive azotemia, acute renal failure or death. Patients at risk of excessive hypotension include those with the following conditions or characteristics: heart failure with systolic blood pressure below 100 mmHg, ischemic heart disease, cerebrovascular disease, hyponatremia, high dose diuretic therapy, renal dialysis, or severe volume and/or salt depletion of any etiology.

In these patients, EPANED should be started under very close medical supervision and such patients should be followed closely for the first two weeks of treatment and whenever the dose of EPANED and/or diuretic is increased.

Symptomatic hypotension is also possible in patients with severe aortic stenosis or hypertrophic cardiomyopathy.

Surgery/Anesthesia

In patients undergoing major surgery or during anesthesia with agents that produce hypotension, EPANED may block angiotensin II formation secondary to compensatory renin release. If hypotension occurs and is considered to be through this mechanism, it can be corrected by volume expansion.

5.4 Hepatic Failure

Rarely, ACE inhibitors have been associated with a syndrome that starts with cholestatic jaundice and progresses to fulminant hepatic necrosis, and (sometimes) death. The mechanism of this syndrome is not understood. Patients receiving ACE inhibitors who develop jaundice or marked elevations of hepatic enzymes should discontinue the ACE inhibitor and receive appropriate medical follow-up.

5.5 Impaired Renal Function

Monitor renal function in patients treated with EPANED. Changes in renal function including acute renal failure can be caused by drugs that inhibit the renin-angiotensin system. Patients whose renal function may depend in part on the activity of the renin-angiotensin system (e.g., patients with renal artery stenosis, chronic kidney disease, severe congestive heart failure, post-myocardial infarction or volume depletion) may be at particular risk of developing acute renal failure on EPANED. Consider withholding or discontinuing therapy in patients who develop a clinically significant decrease in renal function on EPANED [*see Adverse Reactions (6.2), Drug Interactions (7.2, 7.3)*].

5.6 Hyperkalemia

Serum potassium should be monitored in patients receiving EPANED. Drugs that inhibit the renin-angiotensin system can cause hyperkalemia. Risk factors for the development of hyperkalemia include renal insufficiency, diabetes mellitus, and the concomitant use of potassium-sparing diuretics, potassium supplements and/or potassium-containing salt substitutes [*see Drug Interactions (7.3)*].

6 ADVERSE REACTIONS

The following adverse reactions are described elsewhere:

- Angioedema [*see Warnings and Precautions (5.2)*]
- Hypotension [*see Warnings and Precautions (5.3)*]
- Hepatic failure [*see Warnings and Precautions (5.4)*]
- Renal impairment [*see Warnings and Precautions (5.5)*]
- Hyperkalemia [*see Warnings and Precautions (5.6)*]

6.1 Clinical Trials Experience

Because clinical trials are conducted under widely varying conditions, adverse reaction rates observed in clinical trials of a drug cannot be directly compared to rates in the clinical trials of another drug and may not reflect the rates observed in clinical practice.

Enalapril has been evaluated for safety in more than 10,000 patients, including over 1,000 patients treated for one year or more.

In clinical trials, discontinuation of therapy for clinical adverse experiences was required in 3.3% of patients with hypertension and in 5.7% of patients with heart failure.

Hypertension

Adverse reactions (where rate on enalapril exceeds the rate on placebo by at least 0.2%) occurring in greater than 1% of patients with hypertension treated with enalapril in controlled clinical trials are shown below. In patients treated with enalapril, the maximum duration of therapy was three years; in placebo treated patients, the maximum duration of therapy was 12 weeks.

Adverse Reactions Occurring in Greater Than 1% of Patients With Hypertension

	Enalapril Maleate Tablets (n = 2314) Incidence (discontinuation)	Placebo (n = 230) Incidence
<i>Body As A Whole</i>		
Fatigue	3.0 (<0.1)	2.6
Orthostatic Effects	1.2 (<0.1)	0.0
Asthenia	1.1 (0.1)	0.9
<i>Respiratory</i>		
Cough	1.3 (0.1)	0.9
<i>Skin</i>		
Rash	1.4 (0.4)	0.4

Heart Failure

Adverse reactions seen in clinical trials of heart failure were similar to those seen in clinical trials for hypertension. In patients treated for heart failure, there was an increased incidence of hypotension 6.7 percent versus 0.6 percent in placebo and dizziness 7.9 percent versus 0.6 percent in placebo.

6.2 Other Adverse Reactions from Clinical Studies or Postmarketing Experience

The following adverse reactions have been reported in clinical studies or postmarketing experience with enalapril. Because some of these reactions were reported voluntarily from a population of uncertain size, it is not always possible to reliably estimate their frequency or establish a causal relationship to drug exposure.

Other serious clinical adverse experiences occurring since the drug was marketed or adverse experiences occurring in 0.5 to 1.0% of patients with hypertension or heart failure in clinical trials are listed below and, within each category, are in order of decreasing severity.

Cardiovascular: Cardiac arrest; myocardial infarction or cerebrovascular accident, possibly secondary to excessive hypotension in high risk patients [see *Warnings and Precautions (5.3)*]; pulmonary embolism and infarction; pulmonary edema; rhythm disturbances, including atrial tachycardia and bradycardia; atrial fibrillation; palpitation; Raynaud's phenomenon.

Digestive: Ileus, pancreatitis, melena, anorexia, dyspepsia, constipation, glossitis, stomatitis, dry mouth.

Hematologic: Rare cases of neutropenia, thrombocytopenia, and bone marrow depression.

Musculoskeletal: Muscle cramps.

Nervous/Psychiatric: Depression, confusion, ataxia, somnolence, insomnia, nervousness, peripheral neuropathy (e.g., paresthesia, dysesthesia), dream abnormality.

Respiratory: Bronchospasm, rhinorrhea, sore throat and hoarseness, asthma, upper respiratory infection, pulmonary infiltrates, eosinophilic pneumonitis.

Skin: Exfoliative dermatitis, toxic epidermal necrolysis, Stevens-Johnson syndrome, pemphigus, herpes zoster, erythema multiforme, urticaria, pruritus, alopecia, flushing, diaphoresis, photosensitivity.

Special Senses: Blurred vision, taste alteration, anosmia, tinnitus, conjunctivitis, dry eyes, tearing.

Urogenital: Flank pain, gynecomastia, impotence.

Miscellaneous: A symptom complex has been reported which may include some or all of the following: a positive ANA, an elevated erythrocyte sedimentation rate, arthralgia/arthritis, myalgia/myositis, fever, serositis, vasculitis, leukocytosis, eosinophilia, photosensitivity, dermatologic manifestations.

7 DRUG INTERACTIONS

7.1 Non-Steroidal Anti-Inflammatory Agents (NSAIDs) Including Selective Cyclooxygenase-2 Inhibitors (COX-2 Inhibitors)

In patients who are elderly, volume-depleted (including those on diuretic therapy), or with compromised renal function, co-administration of NSAIDs, including selective COX-2 inhibitors, with ACE inhibitors, including enalapril, may result in deterioration of renal function, including possible acute renal failure. These effects are usually reversible. Monitor renal function periodically in patients receiving enalapril and NSAID therapy.

In a clinical pharmacology study, indomethacin or sulindac was administered to hypertensive patients receiving enalapril maleate. In this study, there was no evidence of a blunting of the antihypertensive action of enalapril maleate. However, reports suggest that NSAIDs may diminish the antihypertensive effect of ACE inhibitors.

7.2 Dual Blockade of the Renin-Angiotensin System (RAS)

Dual blockade of the RAS with angiotensin receptor blockers, ACE inhibitors, or aliskiren is associated with increased risks of hypotension, hyperkalemia, and changes in renal function (including acute renal failure) compared to monotherapy. In most patients no benefit has been associated with using two RAS inhibitors concomitantly. In general, avoid combined use of RAS inhibitors. Closely monitor blood pressure, renal function and electrolytes in patients on EPANED and other agents that affect the RAS.

Do not co-administer aliskiren with EPANED in patients with diabetes. Avoid use of aliskiren with EPANED in patients with renal impairment (GFR <60 mL/min).

7.3 Agents Increasing Serum Potassium

EPANED attenuates potassium loss caused by thiazide-type diuretics. Potassium-sparing diuretics (e.g., spironolactone, triamterene, or amiloride), potassium supplements, or potassium-containing salt substitutes may lead to significant increases in serum potassium.

7.4 Lithium

Lithium toxicity has been reported in patients receiving enalapril and lithium concomitantly which was generally reversible. It is recommended that serum lithium levels be monitored frequently if enalapril is administered concomitantly with lithium.

7.5 Gold

Nitritoid reactions (symptoms include facial flushing, nausea, vomiting, and hypotension) have been reported rarely in patients on therapy with injectable gold (sodium aurothiomalate) and concomitant ACE inhibitor therapy including enalapril.

7.6 mTOR Inhibitors

Patients taking concomitant mTOR inhibitor (e.g., temsirolimus, sirolimus, everolimus) therapy may be at increased risk for angioedema [see *Warnings and Precautions* (5.2)].

7.7 Neprilysin Inhibitor

Patients taking concomitant neprilysin inhibitors may be at increased risk for angioedema [see *Warnings and Precautions* (5.2)].

8 USE IN SPECIFIC POPULATIONS

8.1 Pregnancy

Risk Summary

EPANED can cause fetal harm when administered to a pregnant woman. Use of drugs that act on the renin-angiotensin system during the second and third trimesters of pregnancy reduces fetal renal function and increases fetal and neonatal morbidity and death. Most epidemiologic studies examining fetal abnormalities after exposure to antihypertensive use in the first trimester have not distinguished drugs affecting the renin-angiotensin system from other antihypertensive agents. When pregnancy is detected, discontinue EPANED as soon as possible.

The estimated background risk of major birth defects and miscarriage for the indicated population(s) are unknown. In the general U.S. population, the estimated background risk of major birth defects and miscarriage in clinically recognized pregnancies is 2-4% and 15-20%, respectively.

Clinical Considerations

Disease-associated maternal and/or embryo/fetal risk

Hypertension in pregnancy increases the maternal risk for pre-eclampsia, gestational diabetes, premature delivery, and delivery complications (e.g., need for cesarean section, and post-partum hemorrhage). Hypertension increases the fetal risk for intrauterine growth restriction and intrauterine death. Pregnant women with hypertension should be carefully monitored and managed accordingly.

Adverse reactions in the fetus or in neonates with a history of in utero exposure to enalapril maleate.

Use of drugs that act on the renin-angiotensin system during the second and third trimesters of pregnancy can result in the following: reduced fetal renal function leading to anuria and renal failure, oligohydramnios, fetal lung hypoplasia, skeletal deformations, including skull hypoplasia, hypotension, and death. In the unusual case that there is no appropriate alternative to therapy with drugs affecting the renin-angiotensin system for a particular patient, apprise the mother of the potential risk to the fetus.

Perform serial ultrasound examinations to assess the intra-amniotic environment. Fetal testing may be appropriate, based on the week of pregnancy. Patients and physicians should be aware, however, that oligohydramnios may not appear until after the fetus has sustained irreversible injury. Closely observe infants with histories of *in utero* exposure to EPANED for hypotension, oliguria, and hyperkalemia. If oliguria or hypotension occurs in neonates with a history of *in utero* exposure to EPANED, support blood pressure and renal perfusion. Exchange transfusions or dialysis may be required as a means of reversing hypotension and substituting for disordered renal function.

8.2 Lactation

Risk Summary

Enalapril and enalaprilat have been detected in human breast milk. Because of the potential for serious adverse reactions in the breastfed infant, including hypotension, hyperkalemia, and renal impairment, advise women not to breastfeed during treatment with EPANED.

8.4 Pediatric Use

Neonates with a history of in utero exposure to enalapril maleate:

If oliguria or hypotension occurs, direct attention toward support of blood pressure and renal perfusion. Exchange transfusions or dialysis may be required as a means of reversing hypotension and/or substituting for disordered renal function. Enalapril, which crosses the placenta, has been removed from neonatal circulation by peritoneal dialysis with some clinical benefit, and theoretically may be removed by exchange transfusion, although there is no experience with the latter procedure.

Pediatric patients with hypertension

EPANED is not recommended in neonates (i.e., infants 1 month of age or less), preterm infants who have not reached a corrected post-conceptual age of 44 weeks, and in pediatric patients with glomerular filtration rate $<30 \text{ mL/min/1.73 m}^2$ [see *Nonclinical Toxicology (13.2)*].

Enalapril lowers blood pressure in hypertensive pediatric patients age 6 years to 16 years. Use of enalapril in these age groups is supported by evidence from adequate and well-controlled studies of enalapril in pediatric and adult patients as well as by published literature in pediatric patients [see *Clinical Pharmacology (12.3) and Dosage and Administration (2.1)*]. Clinical efficacy studies of enalapril in pediatric patients with hypertension did not enroll patients less than 6 years of age. In a previous clinical study in pediatric patients between 2 months and 6 years of age, a higher weight-based dose was required to match exposure in children aged 6 to 16 years [see *Clinical Pharmacology (12.3)*].

It is unknown whether post-natal use of ACE inhibitors such as enalapril before maturation of renal function is complete has long-term deleterious effects on the kidney. In humans, nephrogenesis is thought to be complete around birth; however maturation of other aspects of kidney function (such as glomerular filtration and tubular function) may continue until approximately 2 years of age [see *Nonclinical Toxicology (13.2)*].

Pediatric patients with heart failure or asymptomatic left ventricular dysfunction

Safety and effectiveness of enalapril have not been established in pediatric patients with heart failure or asymptomatic left ventricular dysfunction.

8.5 Geriatric Use

This drug is known to be substantially excreted by the kidney, and the risk of adverse reactions to this drug may be greater in patients with impaired renal function. Because elderly patients are more likely to have decreased renal function, care should be taken in dose selection, and it may be useful to monitor renal function.

8.6 Race

ACE inhibitors, including EPANED, as monotherapy have an effect on blood pressure that is less in Black patients than in non-Blacks.

8.7 Renal Impairment

Use a lower initial dose of EPANED in patients undergoing hemodialysis and in patients whose eGFR is $\leq 30 \text{ mL/min}$ [see *Dosage and Administration (2.1) and Clinical Pharmacology (12.3)*].

10 OVERDOSAGE

Limited data are available in regard to overdose in humans.

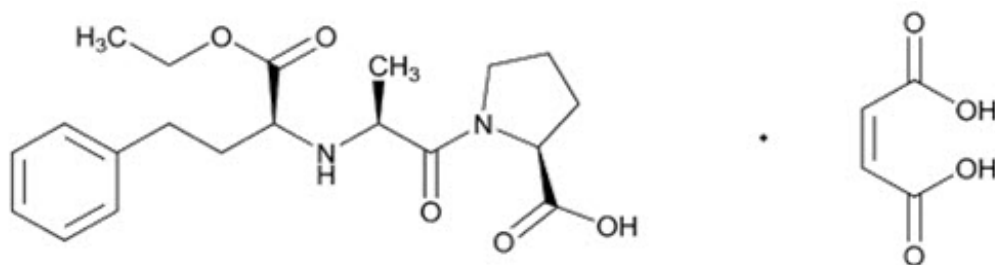
Single oral doses of enalapril above 1,000 mg/kg and $\geq 1,775$ mg/kg were associated with lethality in mice and rats, respectively.

The most likely manifestation of overdose would be hypotension, for which the usual treatment would be intravenous infusion of normal saline solution.

Enalaprilat may be removed from general circulation by hemodialysis and has been removed from neonatal circulation by peritoneal dialysis.

11 DESCRIPTION

EPANED (enalapril maleate) Powder for Oral Solution is the maleate salt of enalapril, the ethyl ester prodrug of a long-acting angiotensin-converting enzyme inhibitor, enalaprilat. Enalapril maleate is chemically described as (S)-1-[N-[1-(ethoxycarbonyl)-3-phenylpropyl]-L-alanyl]-L-proline, (Z)-2-butenedioate salt (1:1). Its empirical formula is $C_{20}H_{28}N_2O_5 \cdot C_4H_4O_4$, and its structural formula is:



Enalapril maleate is a white to off-white, crystalline powder with a molecular weight of 492.52. It is sparingly soluble in water, soluble in ethanol, and freely soluble in methanol.

EPANED Powder for Oral Solution is a kit consisting of 1 bottle containing a dry powder blend of enalapril maleate, USP, mannitol, and colloidal silicon dioxide and 1 bottle of Ora-Sweet SF diluent for reconstitution resulting in a 1 mg/mL EPANED oral solution. The Ora-Sweet SF diluent contains: purified water, glycerin, sorbitol, sodium saccharin, xanthan gum, and flavoring. Buffered with citric acid and sodium citrate. Preserved with methylparaben (0.03%), propylparaben (0.008%), and potassium sorbate (0.1%).

12 CLINICAL PHARMACOLOGY

12.1 Mechanism of Action

Enalapril, after hydrolysis to enalaprilat, inhibits angiotensin-converting enzyme (ACE) in human subjects and animals. ACE is a peptidyl dipeptidase that catalyzes the conversion of angiotensin I to the vasoconstrictor substance, angiotensin II. Angiotensin II also stimulates aldosterone secretion by the adrenal cortex. The beneficial effects of enalapril in hypertension and heart failure appear to result primarily from suppression of the renin-angiotensin-aldosterone system. Inhibition of ACE results in decreased plasma angiotensin II, which leads to decreased vasopressor activity and to decreased aldosterone secretion. Although the latter decrease is small, it results in small increases of serum potassium. In hypertensive patients treated with enalapril maleate tablets alone for up to 48 weeks, mean increases in serum potassium of approximately 0.2 mEq/L were observed. In patients treated with enalapril maleate tablets plus a thiazide diuretic, there was essentially no change in serum potassium [see *Warnings and Precautions* (5.6)]. Removal of angiotensin II negative feedback on renin secretion leads to increased plasma renin activity.

ACE is identical to kininase, an enzyme that degrades bradykinin. Whether increased levels of

bradykinin, a potent vasodepressor peptide, play a role in the therapeutic effects of EPANED remains to be elucidated.

While the mechanism through which EPANED lowers blood pressure is believed to be primarily suppression of the renin-angiotensin-aldosterone system, enalapril is antihypertensive even in patients with low-renin hypertension. Although enalapril maleate tablets was antihypertensive in all races studied, Black hypertensive patients (usually a low-renin hypertensive population) had a smaller average response to enalapril monotherapy than non-Black patients.

12.2 Pharmacodynamics

Hypertension

Adults

Administration of enalapril maleate tablets to patients with hypertension of severity ranging from mild to severe results in a reduction of both supine and standing blood pressure, usually with no orthostatic component. Symptomatic postural hypotension is therefore infrequent, although it might be anticipated in volume-depleted patients [*see Warnings and Precautions (5.3)*].

In most patients studied, after oral administration of a single dose of enalapril, onset of antihypertensive activity was seen at one hour with peak reduction of blood pressure achieved by four to six hours.

At recommended doses, antihypertensive effects have been maintained for at least 24 hours. In some patients the effects may diminish toward the end of the dosing interval [*see Dosage and Administration (2.1)*].

In some patients achievement of optimal blood pressure reduction may require several weeks of therapy.

The antihypertensive effects of enalapril have continued during long-term therapy. Abrupt withdrawal of enalapril has not been associated with a rapid increase in blood pressure.

In hemodynamic studies in patients with essential hypertension, blood pressure reduction was accompanied by a reduction in peripheral arterial resistance with an increase in cardiac output and little or no change in heart rate. Following administration of enalapril, there is an increase in renal blood flow; glomerular filtration rate is usually unchanged. The effects appear to be similar in patients with renovascular hypertension.

When given together with thiazide-type diuretics, the blood pressure lowering effects of enalapril maleate are approximately additive.

In a clinical pharmacology study, indomethacin or sulindac was administered to hypertensive patients receiving enalapril maleate tablets. In this study, there was no evidence of a blunting of the antihypertensive action of enalapril [*see Drug Interactions (7.1)*].

Pediatric Patients

In a clinical study involving 110 hypertensive pediatric patients 6 to 16 years of age, patients who weighed <50 kg received either 0.625, 2.5, or 20 mg of enalapril daily and patients who weighed ≥50 kg received either 1.25, 5, or 40 mg of enalapril daily. Enalapril administration once daily lowered trough blood pressure in a dose-dependent manner. The dose-dependent antihypertensive efficacy of enalapril was consistent across all subgroups (age, Tanner stage, gender, race). However, the lowest doses studied, 0.625 mg and 1.25 mg, corresponding to an average of 0.02 mg/kg once daily, did not appear to offer consistent antihypertensive efficacy. In this study, enalapril maleate was generally well tolerated. Limited information exists on the blood pressure lowering effects in pediatric patients less than 6 years of age.

Heart Failure

In trials in patients treated with digitalis and diuretics, treatment with enalapril resulted in decreased

systemic vascular resistance, blood pressure, pulmonary capillary wedge pressure and heart size, and increased cardiac output and exercise tolerance. Heart rate was unchanged or slightly reduced, and mean ejection fraction was unchanged or increased. There was a beneficial effect on severity of heart failure as measured by the New York Heart Association (NYHA) classification and on symptoms of dyspnea and fatigue. Hemodynamic effects were observed after the first dose, and appeared to be maintained in uncontrolled studies lasting as long as four months. Effects on exercise tolerance, heart size, and severity and symptoms of heart failure were observed in placebo-controlled studies lasting from eight weeks to over one year.

12.3 Pharmacokinetics

Reconstituted EPANED Powder for Oral Solution was shown to be bioequivalent to that of Vasotec[®] tablets. Reconstituted EPANED Powder for Oral Solution was also evaluated under fed and fasted conditions. A high-fat meal reduced the C_{max} of enalapril and enalaprilat by 46% and 36%, respectively. The exposure, as measured by AUC, to enalaprilat was reduced by 23%. The time to peak concentrations (C_{max}) was delayed by 20 minutes for enalapril and 62 minutes for enalaprilat. The trough plasma concentrations of enalapril (from 6 to 12 hours) and enalaprilat (from 16 to 36 hours) are similar between fasted and fed administrations.

Adults

Following oral administration of enalapril maleate tablets, peak serum concentrations of enalapril occur within about one hour. Based on urinary recovery, the extent of absorption of enalapril is approximately 60%. Enalapril absorption is not influenced by the presence of food in the gastrointestinal tract. Following absorption, enalapril is hydrolyzed to enalaprilat, which is a more potent angiotensin-converting enzyme inhibitor than enalapril; enalaprilat is poorly absorbed when administered orally. Peak serum concentrations of enalaprilat occur three to four hours after an oral dose of enalapril maleate. Excretion of enalapril is primarily renal.

Approximately 94% of the dose is recovered in the urine and feces as enalaprilat or enalapril. The principal components in urine are enalaprilat, accounting for about 40% of the dose, and intact enalapril. There is no evidence of metabolites of enalapril, other than enalaprilat.

The serum concentration profile of enalaprilat exhibits a prolonged terminal phase, apparently representing a small fraction of the administered dose that has been bound to ACE. The amount bound does not increase with dose, indicating a saturable site of binding. The effective half-life for accumulation of enalaprilat following multiple doses of enalapril maleate is 11 hours.

The disposition of enalapril and enalaprilat in patients with renal insufficiency is similar to that in patients with normal renal function until the glomerular filtration rate is 30 mL/min or less. With glomerular filtration rate ≤ 30 mL/min, peak and trough enalaprilat levels increase, time to peak concentration increases, and time to steady state may be delayed. The effective half-life of enalaprilat following multiple doses of enalapril maleate is prolonged at this level of renal insufficiency [see *Dosage and Administration (2.1)*]. Enalaprilat is dialyzable at the rate of 62 mL/min. Administering enalapril 1 hour after hemodialysis led to a reduction of approximately 50% in the enalaprilat $AUC_{0-6 h}$ compared to off dialysis days.

Pediatric Patients

A multiple dose pharmacokinetic study was conducted in 40 hypertensive male and female pediatric patients aged 2 months to ≤ 16 years following daily oral administration of 0.07 to 0.14 mg/kg enalapril maleate. At steady state, the mean effective half-life for accumulation of enalaprilat was 14 hours and the mean urinary recovery of total enalapril and enalaprilat in 24 hours was 68% of the administered dose. Conversion of enalapril to enalaprilat was in the range of 63-76%. The overall results of this study indicate that the pharmacokinetics of enalapril in hypertensive children aged 6 to ≤ 16 years are consistent across the studied age groups and consistent with pharmacokinetic historic data in healthy adults. Hypertensive children aged 2 months to 6 years required higher weight-based doses (0.13 mg/kg

and 0.11 mg/kg) compared to the older age groups (0.11 mg/kg and 0.07 mg/kg), to achieve similar steady-state AUC.

In the above pediatric study, enalapril maleate was given as tablets and for those children and infants who were unable to swallow tablets or who required a lower dose than is available in tablet form, enalapril was administered in a suspension formulation.

13 NONCLINICAL TOXICOLOGY

13.1 Carcinogenesis, Mutagenesis, Impairment of Fertility

There was no evidence of a tumorigenic effect when enalapril was administered for 106 weeks to male and female rats at doses up to 90 mg/kg/day or for 94 weeks to male and female mice at doses up to 90 and 180 mg/kg/day, respectively. These doses are 26 times (in rats and female mice) and 13 times (in male mice) the maximum recommended human daily dose (MRHDD) when compared on a body surface area basis.

Neither enalapril maleate nor the active diacid was mutagenic in the Ames microbial mutagen test with or without metabolic activation. Enalapril was also negative in the following genotoxicity studies: rec-assay, reverse mutation assay with *E. coli*, sister chromatid exchange with cultured mammalian cells, and the micronucleus test with mice, as well as in an in vivo cytogenetic study using mouse bone marrow.

There were no adverse effects on reproductive performance of male and female rats treated with up to 90 mg/kg/day of enalapril (26 times the MRHDD when compared on a body surface area basis).

13.2 Animal Toxicology and/or Pharmacology

In several experimental published studies, rat pups exposed to daily enalapril from birth to post-natal Day 13 (the period of nephrogenesis in this species) developed irreversible renal toxicity. In contrast, treatment after post-natal Day 14 was not toxic to the more mature kidney. Rat kidney development at birth and at 14 days is similar to the human at mid-trimester and in infancy, respectively. The toxic dosages in these studies were about 10X, on a mg/m² basis, the highest recommended oral (0.58 mg/kg/day) pediatric dosages to treat hypertension. Lower dosages were not studied.

14 CLINICAL STUDIES

14.1 Heart Failure, Mortality Trials

In a multicenter, placebo-controlled clinical trial, 2,569 patients with all degrees of symptomatic heart failure and ejection fraction ≤ 35 percent were randomized to placebo or enalapril and followed for up to 55 months (SOLVD-Treatment). Use of enalapril was associated with an 11 percent reduction in all-cause mortality and a 30 percent reduction in hospitalization for heart failure. Diseases that excluded patients from enrollment in the study included severe stable angina (>2 attacks/day), hemodynamically significant valvular or outflow tract obstruction, renal failure (creatinine >2.5 mg/dL), cerebral vascular disease (e.g., significant carotid artery disease), advanced pulmonary disease, malignancies, active myocarditis and constrictive pericarditis. The mortality benefit associated with enalapril does not appear to depend upon digitalis being present.

A second multicenter trial used the SOLVD protocol for study of asymptomatic or minimally symptomatic patients. SOLVD-Prevention patients, who had left ventricular ejection fraction $\leq 35\%$ and no history of symptomatic heart failure, were randomized to placebo (n=2117) or enalapril (n=2111) and followed for up to 5 years. The majority of patients in the SOLVD-Prevention trial had a history of ischemic heart disease. A history of myocardial infarction was present in 80 percent of patients, current angina pectoris in 34 percent, and a history of hypertension in 37 percent. No statistically significant mortality effect was demonstrated in this population. Enalapril-treated subjects had 32% fewer first hospitalizations for heart failure, and 32% fewer total heart failure hospitalizations. Compared to

placebo, 32 percent fewer patients receiving enalapril developed symptoms of overt heart failure. Hospitalizations for cardiovascular reasons were also reduced. There was an insignificant reduction in hospitalizations for any cause in the enalapril treatment group (for enalapril vs. placebo, respectively, 1166 vs. 1201 first hospitalizations, 2649 vs. 2840 total hospitalizations), although the study was not powered to look for such an effect.

The SOLVD-Prevention trial was not designed to determine whether treatment of asymptomatic patients with low ejection fraction would be superior, with respect to preventing hospitalization, to closer follow-up and use of enalapril at the earliest sign of heart failure. However, under the conditions of follow-up in the SOLVD-Prevention trial (every 4 months at the study clinic; personal physician as needed), 68% of patients on placebo who were hospitalized for heart failure had no prior symptoms recorded which would have signaled initiation of treatment.

The SOLVD-Prevention trial was also not designed to show whether enalapril modified the progression of underlying heart disease.

In another multicenter, placebo-controlled trial (CONSENSUS) limited to patients with NYHA Class IV congestive heart failure and radiographic evidence of cardiomegaly, use of enalapril was associated with improved survival. The results are shown in the following table.

CONSENSUS Survival Rates

	SURVIVAL (%)	
	Six Months	One Year
VASOTEC [®] (n=127)	74	64
Placebo (n=126)	56	48

In both CONSENSUS and SOLVD-Treatment trials, patients were also usually receiving digitalis, diuretics or both.

16 HOW SUPPLIED/STORAGE AND HANDLING

EPANED is supplied as a kit.

NDC 52652-1001-1

- One bottle containing EPANED Powder (150 mg enalapril maleate) for Oral Solution in a HDPE bottle with child-resistant cap to provide 1 mg/mL final concentration after reconstitution.
- One bottle containing 150 mL of Ora-Sweet SF provided as the diluent for reconstitution.

Store at 25°C (77°F); in a tightly closed container; excursions permitted to 15-30°C (59-86°F) [see USP Controlled Room Temperature]. Protect from moisture and freezing.

17 PATIENT COUNSELING INFORMATION

- **Pregnancy**

Tell female patients of childbearing age about the consequences of exposure to EPANED during pregnancy. Discuss treatment options with women planning to become pregnant. Patients should be asked to report pregnancies to their physicians as soon as possible.

- **Angioedema**

Angioedema, including laryngeal edema, may occur at any time during treatment with angiotensin-

converting enzyme inhibitors, including enalapril. Advise patients to report immediately any signs or symptoms suggesting angioedema (swelling of face, extremities, eyes, lips, or tongue, or difficulty in swallowing or breathing) and to consult with the prescribing physician before taking more drug.

- **Hypotension**

Caution patients to report lightheadedness, especially during the first few days of therapy. If actual syncope occurs, tell patients to discontinue the drug until they have consulted with the prescribing physician.

Tell patients that excessive perspiration and dehydration may lead to an excessive fall in blood pressure because of reduction in fluid volume. Other causes of volume depletion such as vomiting or diarrhea may also lead to a fall in blood pressure; advise patients to consult with their physician.

- **Hyperkalemia**

Tell patients to consult their physician prior to using salt substitutes containing potassium.

EPANED is a trademark of Silvergate Pharmaceuticals, Inc.

Ora-Sweet SF is a registered trademark of Paddock Laboratories, Inc.

VASOTEC is a registered trademark of Valeant International Bermuda.

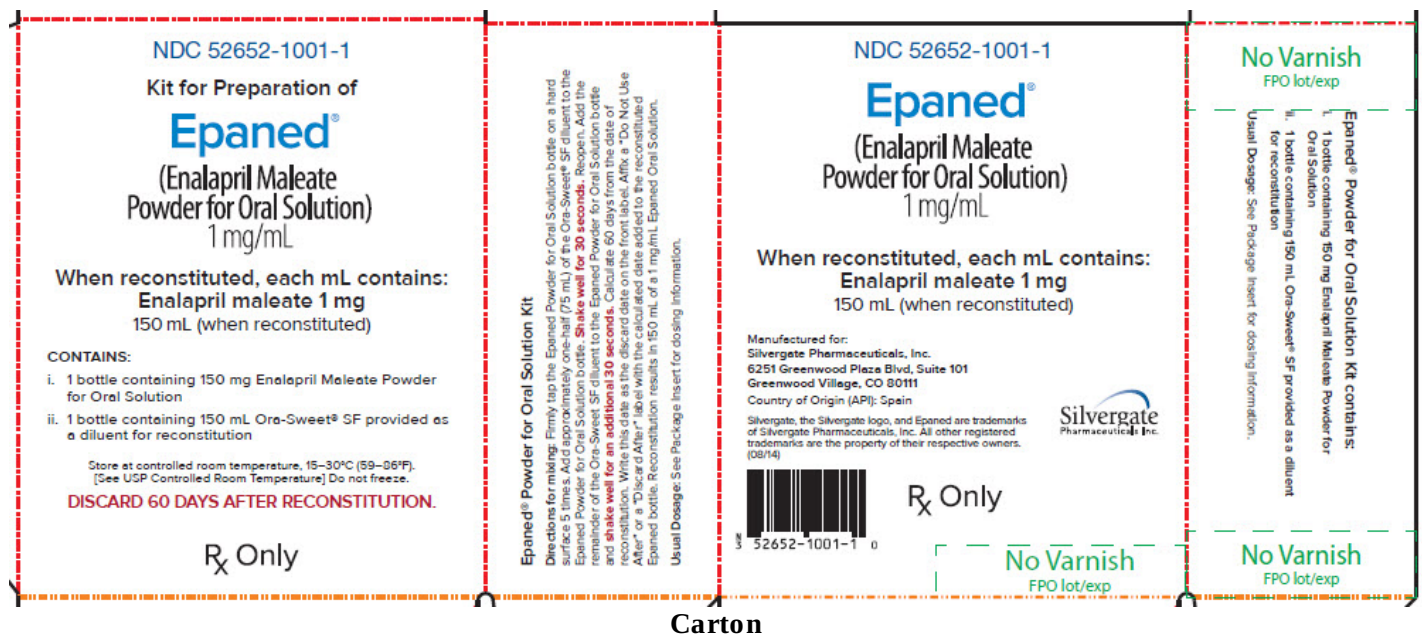
Manufactured For:

Silvergate Pharmaceuticals, Inc.
6251 Greenwood Plaza Blvd., Suite 101
Greenwood Village, CO 80111

U. S. Patents: 8568747; 8778366; 9855214, 9968553

EN-1805

PRINCIPAL DISPLAY PANEL - CARTON



NDC 52652-1001-1

Kit for Preparation of

Epaned[®]
(Enalapril Maleate
Powder for Oral Solution)

1 mg/mL

When reconstituted, each mL contains:

Enalapril maleate 1 mg
150 mL (when reconstituted)

CONTAINS:

- i. 1 bottle containing 150 mg Enalapril Maleate Powder for Oral Solution
- ii. 1 bottle containing 150 mL Ora-Sweet[®] SF provided as a diluent for reconstitution

Store at controlled room temperature, 15-30°C (59-86°F).
[See USP Controlled Room Temperature] Do not freeze.

DISCARD 60 DAYS AFTER RECONSTITUTION.

Rx Only

Epaned[®] Powder for Oral Solution Kit

Directions for mixing: Firmly tap the Epaned Powder for Oral Solution bottle on a hard surface 5 times. Add approximately one-half (75 mL) of the Ora-Sweet[®] SF diluent to the Epaned Powder for Oral Solution bottle. **Shake well for 30 seconds**. Reopen. Add the remainder of the Ora-Sweet SF diluent to the Epaned Powder for Oral Solution bottle and **shake well for an additional 30 seconds**. Calculate 60 days from the date of reconstitution. Write this date as the discard date on the front label. Affix a “Do Not Use After” or a “Discard After” label with the calculated date added to the reconstituted Epaned bottle. Reconstitution results in 150 mL of a 1 mg/mL Epaned Oral Solution.

Usual Dosage: See Package Insert for dosing information.

NDC 52652-1001-1

Epaned[®]
(Enalapril Maleate
Powder for Oral Solution)

1 mg/mL

When reconstituted, each mL contains:

Enalapril maleate 1 mg
150 mL (when reconstituted)

Manufactured for:

Silvergate Pharmaceuticals, Inc.
6251 Greenwood Plaza Blvd, Suite 101
Greenwood Village, CO 80111

Country of Origin (API): Spain

Silvergate, the Silvergate logo, and Epaned are trademarks of Silvergate Pharmaceuticals, Inc. All other registered trademarks are the property of their respective owners.

(08/14)

Silvergate Pharmaceuticals, Inc.

Rx Only**Epaned[®] Powder for Oral Solution Kit contains:**

- i. 1 bottle containing 150 mg Enalapril Maleate Powder for Oral Solution
- ii. 1 bottle containing 150 mL Ora-Sweet[®] SF provided as a diluent for reconstitution

Usual Dosage: See Package Insert for dosing information.

EPANED

enalapril maleate kit

Product Information

Product Type	HUMAN PRESCRIPTION DRUG	Item Code (Source)	NDC:52652-1001
---------------------	-------------------------	---------------------------	----------------

Packaging

#	Item Code	Package Description	Marketing Start Date	Marketing End Date
1	NDC:52652-1001-1	1 in 1 CARTON; Type 0: Not a Combination Product	08/22/2013	

Quantity of Parts

Part #	Package Quantity	Total Product Quantity
Part 1	1 BOTTLE	150 mL
Part 2	1 BOTTLE	150 mL

Part 1 of 2**EPANED**

enalapril maleate powder, for solution

Product Information

Route of Administration	ORAL
--------------------------------	------

Active Ingredient/Active Moiety

Ingredient Name	Basis of Strength	Strength
ENALAPRIL MALEATE (UNII: 9O25354EPJ) (ENALAPRILAT ANHYDROUS - UNII:Q508Q118JM)	ENALAPRIL MALEATE	1 mg in 1 mL

Inactive Ingredients

Ingredient Name	Strength
MANNITOL (UNII: 3OWL53L36A)	

SILICON DIOXIDE (UNII: ETJ7Z6XBU4)

Packaging

#	Item Code	Package Description	Marketing Start Date	Marketing End Date
1		150 mL in 1 BOTTLE; Type 0: Not a Combination Product		

Marketing Information

Marketing Category	Application Number or Monograph Citation	Marketing Start Date	Marketing End Date
NDA	NDA204308		

Part 2 of 2

ORA-SWEET SF

water, glycerin, sorbitol, sodium saccharin, xanthan gum syrup

Product Information

Route of Administration ORAL

Inactive Ingredients

Ingredient Name	Strength
WATER (UNII: 059QF0KO0R)	
GLYCERIN (UNII: PDC6A3C0OX)	
SORBITOL (UNII: 506T60A25R)	
SACCHARIN SODIUM (UNII: SB8ZUX40TY)	
XANTHAN GUM (UNII: TTV12P4NEE)	
CITRIC ACID MONOHYDRATE (UNII: 2968PHW8QP)	
SODIUM CITRATE, UNSPECIFIED FORM (UNII: 1Q73Q2JULR)	
METHYL PARABEN (UNII: A2I8C7HI9T)	
PROPYL PARABEN (UNII: Z8IX2SC1OH)	
POTASSIUM SORBATE (UNII: 1VPU26JZZ4)	

Packaging

#	Item Code	Package Description	Marketing Start Date	Marketing End Date
1		150 mL in 1 BOTTLE; Type 0: Not a Combination Product		

Marketing Information

Marketing Category	Application Number or Monograph Citation	Marketing Start Date	Marketing End Date
NDA	NDA204308		

Marketing Information

Marketing Category	Application Number or Monograph Citation	Marketing Start Date	Marketing End Date
NDA	NDA204308	08/22/2013	

Labeler - Silvergate Pharmaceuticals, Inc. (011248265)

Establishment

Name	Address	ID/FEI	Business Operations
Medichem Sa		464043381	API MANUFACTURE(52652-1001)

Establishment

Name	Address	ID/FEI	Business Operations
KP Pharmaceutical Technology, Inc.		089531958	MANUFACTURE(52652-1001)

Establishment

Name	Address	ID/FEI	Business Operations
Sgs Life Science Services		062491980	ANALYSIS(52652-1001)

Establishment

Name	Address	ID/FEI	Business Operations
Paddock Laboratories, Llc		967694121	MANUFACTURE(52652-1001)

Establishment

Name	Address	ID/FEI	Business Operations
Patheon Puerto Rico, Inc.		143814544	MANUFACTURE(52652-1001)

Revised: 1/2020

Silvergate Pharmaceuticals, Inc.