

**LEVOCETIRIZINE DIHYDROCHLORIDE- levocetirizine dihydrochloride tablet, film coated
Ranbaxy Pharmaceuticals Inc.**

Reference Label Set Id: b5424cc1-4a5b-41b3-874a-e0c0406c9bfa

HIGHLIGHTS OF PRESCRIBING INFORMATION

These highlights do not include all the information needed to use LEVOCETIRIZINE dihydrochloride tablets safely and effectively. See full prescribing information for LEVOCETIRIZINE dihydrochloride tablets.

LEVOCETIRIZINE dihydrochloride tablets for oral use

Initial U.S. Approval: 1995

----- **INDICATIONS AND USAGE** -----

Levocetirizine dihydrochloride tablets are a histamine H₁-receptor antagonist indicated for: (1)

- The relief of symptoms associated with seasonal and perennial allergic rhinitis (1.1, 1.2)
- The treatment of the uncomplicated skin manifestations of chronic idiopathic urticaria (1.3)

----- **DOSAGE AND ADMINISTRATION** -----

- Adults and children 12 years of age and older: 5 mg once daily in the evening (2.1)
- Children 6 to 11 years of age: 2.5 mg once daily in the evening (2.2)
- Renal Impairment

Adjust the dose in patients 12 years of age and older with decreased renal function (2.4, 12.3). (2)

----- **DOSAGE FORMS AND STRENGTHS** -----

- Immediate release breakable (functionally scored) tablets, 5 mg (3)

----- **CONTRAINDICATIONS** -----

- Patients with a known hypersensitivity to levocetirizine or any of the ingredients of levocetirizine dihydrochloride tablets or to cetirizine (4.1)
- Patients with end-stage renal disease at less than 10 mL/min creatinine clearance or patients undergoing hemodialysis (4.2)
- Children 6 months to 11 years of age with renal impairment (4.3)

----- **WARNINGS AND PRECAUTIONS** -----

- Avoid engaging in hazardous occupations requiring complete mental alertness such as driving or operating machinery when taking levocetirizine dihydrochloride (5.1).
- Avoid concurrent use of alcohol or other central nervous system depressants with levocetirizine dihydrochloride (5.1).
- Use with caution in patients with predisposing factors of urinary retention (e.g. spinal cord lesion, prostatic hyperplasia). Discontinue levocetirizine dihydrochloride if urinary retention occurs (5.2).

----- **ADVERSE REACTIONS** -----

The most common adverse reactions (rate ≥ 2% and > placebo) were somnolence, nasopharyngitis, fatigue, dry mouth, and pharyngitis in subjects 12 years of age and older, and pyrexia, somnolence, cough, and epistaxis in children 6 to 12 years of age. In subjects 1 to 5 years of age, the most common adverse reactions (rate ≥ 2% and > placebo) were pyrexia, diarrhea, vomiting, and otitis media. In subjects 6 to 11 months of age, the most common adverse reactions (rate ≥ 3% and > placebo) were diarrhea and constipation. (6.1). (6)

To report SUSPECTED ADVERSE REACTIONS, contact Ranbaxy Pharmaceuticals Inc. at 1-888-RANBAXY (726-2299) or FDA at 1-800-FDA-1088 or www.fda.gov/medwatch. (6)

----- **USE IN SPECIFIC POPULATIONS** -----

- Renal Impairment

Because levocetirizine dihydrochloride is substantially excreted by the kidneys, the risk of adverse reactions to this drug may be greater in patients with impaired renal function (8.6 and 12.3). (8)

- Pediatric Use

Do not exceed the recommended dose 2.5 mg once daily in children 6 to 11 years of age. Systemic exposure with these doses in respective pediatric age groups is comparable to that from a 5 mg once daily dose in adults. (12.3). (8)

See 17 for PATIENT COUNSELING INFORMATION.

Revised: 7/2015

FULL PRESCRIBING INFORMATION: CONTENTS*

1 INDICATIONS AND USAGE

- 1.1 Seasonal Allergic Rhinitis
- 1.2 Perennial Allergic Rhinitis
- 1.3 Chronic Idiopathic Urticaria

2 DOSAGE AND ADMINISTRATION

- 2.1 Adults and Children 12 Years of Age and Older
- 2.2 Children 6 to 11 Years of Age
- 2.4 Dose Adjustment for Renal and Hepatic Impairment

3 DOSAGE FORMS AND STRENGTHS

4 CONTRAINDICATIONS

- 4.1 Patients with known hypersensitivity
- 4.2 Patients with end-stage renal disease
- 4.3 Pediatric patients with impaired renal function

5 WARNINGS AND PRECAUTIONS

- 5.1 Somnolence
- 5.2 Urinary Retention

6 ADVERSE REACTIONS

- 6.1 Clinical Trials Experience
- 6.2 Post-Marketing Experience

7 DRUG INTERACTIONS

- 7.1 Antipyrine, Azithromycin, Cimetidine, Erythromycin, Ketoconazole, Theophylline, and Pseudoephedrine
- 7.2 Ritonavir

8 USE IN SPECIFIC POPULATIONS

- 8.1 Pregnancy
- 8.3 Nursing Mothers
- 8.4 Pediatric Use
- 8.5 Geriatric Use
- 8.6 Renal Impairment
- 8.7 Hepatic Impairment

10 OVERDOSAGE

11 DESCRIPTION

12 CLINICAL PHARMACOLOGY

- 12.1 Mechanism of Action
- 12.2 Pharmacodynamics
- 12.3 Pharmacokinetics

13 NONCLINICAL TOXICOLOGY

- 13.1 Carcinogenesis, Mutagenesis, Impairment of Fertility
- 13.2 Animal Toxicology

14 CLINICAL STUDIES

- 14.1 Seasonal and Perennial Allergic Rhinitis
- 14.2 Chronic Idiopathic Urticaria

16 HOW SUPPLIED/STORAGE AND HANDLING

17 PATIENT COUNSELING INFORMATION

17.1 Somnolence

17.2 Concomitant Use of Alcohol and other Central Nervous System Depressants

17.3 Dosing of Levocetirizine Dihydrochloride Tablets

* Sections or subsections omitted from the full prescribing information are not listed.

FULL PRESCRIBING INFORMATION

1 INDICATIONS AND USAGE

1.1 Seasonal Allergic Rhinitis

Levocetirizine dihydrochloride tablets are indicated for the relief of symptoms associated with seasonal allergic rhinitis in adults and children 6 years of age and older.

1.2 Perennial Allergic Rhinitis

Levocetirizine dihydrochloride tablets are indicated for the relief of symptoms associated with perennial allergic rhinitis in adults and children 6 years of age and older.

1.3 Chronic Idiopathic Urticaria

Levocetirizine dihydrochloride tablets are indicated for the treatment of the uncomplicated skin manifestations of chronic idiopathic urticaria in adults and children 6 years of age and older.

2 DOSAGE AND ADMINISTRATION

Levocetirizine dihydrochloride is available as 5 mg breakable (scored) tablets, allowing for the administration of 2.5 mg, if needed. Levocetirizine dihydrochloride tablets can be taken without regard to food consumption.

2.1 Adults and Children 12 Years of Age and Older

The recommended dose of levocetirizine dihydrochloride tablets is 5 mg (1 tablet) once daily in the evening. Some patients may be adequately controlled by 2.5 mg (1/2 tablet) once daily in the evening.

2.2 Children 6 to 11 Years of Age

The recommended dose of levocetirizine dihydrochloride tablets is 2.5 mg (1/2 tablet) once daily in the evening. The 2.5 mg dose should not be exceeded because the systemic exposure with 5 mg is approximately twice that of adults [see *Clinical Pharmacology* (12.3)].

2.4 Dose Adjustment for Renal and Hepatic Impairment

In adults and children 12 years of age and older with:

- Mild renal impairment (creatinine clearance [CL_{CR}] = 50 to 80 mL/min): a dose of 2.5 mg once daily is recommended;
- Moderate renal impairment (CL_{CR} = 30 to 50 mL/min): a dose of 2.5 mg once every other day is recommended;
- Severe renal impairment (CL_{CR} = 10 to 30 mL/min): a dose of 2.5 mg twice weekly (administered once every 3 to 4 days) is recommended;
- End-stage renal disease patients (CL_{CR} < 10 mL/min) and patients undergoing hemodialysis should not receive levocetirizine dihydrochloride tablets.

No dose adjustment is needed in patients with solely hepatic impairment. In patients with both hepatic impairment and renal impairment, adjustment of the dose is recommended.

3 DOSAGE FORMS AND STRENGTHS

Levocetirizine dihydrochloride tablets are white to off-white, oval-shaped, biconvex, functionally scored, film-coated tablets, debossed with ‘R’ and ‘I’ on either side of the scoreline on one side and ‘7’ and ‘3’ on either side of the scoreline on the other side and contain 5 mg levocetirizine dihydrochloride.

4 CONTRAINDICATIONS

The use of levocetirizine dihydrochloride is contraindicated in:

4.1 Patients with known hypersensitivity

Patients with known hypersensitivity to levocetirizine or any of the ingredients of levocetirizine dihydrochloride tablets, or to cetirizine. Observed reactions range from urticaria to anaphylaxis [see *Adverse Reactions* (6.2)].

4.2 Patients with end-stage renal disease

Patients with end-stage renal disease ($CL_{CR} < 10$ mL/min) and patients undergoing hemodialysis

4.3 Pediatric patients with impaired renal function

Children 6 months to 11 years of age with impaired renal function

5 WARNINGS AND PRECAUTIONS

5.1 Somnolence

In clinical trials the occurrence of somnolence, fatigue, and asthenia has been reported in some patients under therapy with levocetirizine dihydrochloride. Patients should be cautioned against engaging in hazardous occupations requiring complete mental alertness, and motor coordination such as operating machinery or driving a motor vehicle after ingestion of levocetirizine dihydrochloride. Concurrent use of levocetirizine dihydrochloride with alcohol or other central nervous system depressants should be avoided because additional reductions in alertness and additional impairment of central nervous system performance may occur.

5.2 Urinary Retention

Urinary retention has been reported post-marketing with levocetirizine dihydrochloride. Levocetirizine dihydrochloride should be used with caution in patients with predisposing factors of urinary retention (e.g. spinal cord lesion, prostatic hyperplasia) as levocetirizine dihydrochloride may increase the risk of urinary retention. Discontinue levocetirizine dihydrochloride if urinary retention occurs.

6 ADVERSE REACTIONS

Use of levocetirizine dihydrochloride has been associated with somnolence, fatigue, asthenia, and urinary retention [see *Warnings and Precautions* (5)].

6.1 Clinical Trials Experience

The safety data described below reflect exposure to levocetirizine dihydrochloride in 2708 patients with seasonal or perennial allergic rhinitis or chronic idiopathic urticaria in 14 controlled clinical trials

of 1 week to 6 months duration.

The short-term (exposure up to 6 weeks) safety data for adults and adolescents are based upon eight clinical trials in which 1896 patients (825 males and 1071 females aged 12 years and older) were treated with levocetirizine dihydrochloride 2.5, 5, or 10 mg once daily in the evening.

The short-term safety data from pediatric patients are based upon two clinical trials in which 243 children with seasonal or perennial allergic rhinitis (162 males and 81 females 6 to 12 years of age) were treated with levocetirizine dihydrochloride 5 mg once daily for 4 to 6 weeks, one clinical trial in which 114 children (65 males and 49 females 1 to 5 years of age) with allergic rhinitis or chronic idiopathic urticaria were treated with levocetirizine dihydrochloride 1.25 mg twice daily for 2 weeks, and one clinical trial in which 45 children (28 males and 17 females 6 to 11 months of age) with symptoms of allergic rhinitis or chronic urticaria were treated with levocetirizine dihydrochloride 1.25 mg once daily for 2 weeks.

The long-term (exposure of 4 or 6 months) safety data in adults and adolescents are based upon two clinical trials in which 428 patients (190 males and 238 females) with allergic rhinitis were exposed to treatment with levocetirizine dihydrochloride 5 mg once daily. Long term safety data are also available from an 18-month trial in 255 levocetirizine dihydrochloride-treated subjects 12 to 24 months of age.

Because clinical trials are conducted under widely varying conditions, adverse reaction rates observed in the clinical trials of a drug cannot be directly compared to rates in the clinical trial of another drug and may not reflect the rates observed in practice.

Adults and Adolescents 12 years of Age and Older

In studies up to 6 weeks in duration, the mean age of the adult and adolescent patients was 32 years, 44% of the patients were men and 56% were women, and the large majority (more than 90%) was Caucasian.

In these trials 43% and 42% of the subjects in the levocetirizine dihydrochloride 2.5 mg and 5 mg groups, respectively, had at least one adverse event compared to 43% in the placebo group.

In placebo-controlled trials of 1 to 6 weeks in duration, the most common adverse reactions were somnolence, nasopharyngitis, fatigue, dry mouth, and pharyngitis, and most were mild to moderate in intensity. Somnolence with levocetirizine dihydrochloride showed dose ordering between tested doses of 2.5, 5 and 10 mg and was the most common adverse reaction leading to discontinuation (0.5%).

Table 1 lists adverse reactions that were reported in greater than or equal to 2% of subjects aged 12 years and older exposed to levocetirizine dihydrochloride 2.5 mg or 5 mg in eight placebo-controlled clinical trials and that were more common with levocetirizine dihydrochloride than placebo.

Table 1 Adverse Reactions Reported in $\geq 2\%$ * of Subjects Aged 12 Years and Older Exposed to Levocetirizine Dihydrochloride 2.5 mg or 5 mg Once Daily in Placebo-Controlled Clinical Trials 1 to 6 Weeks in Duration

Adverse Reactions	Levocetirizine Dihydrochloride 2.5 mg (n = 421)	Levocetirizine Dihydrochloride 5 mg (n = 1070)	Placebo (n = 912)
Somnolence	22 (5%)	61 (6%)	16 (2%)
Nasopharyngitis	25 (6%)	40 (4%)	28 (3%)
Fatigue	5 (1%)	46 (4%)	20 (2%)
Dry Mouth	12 (3%)	26 (2%)	11 (1%)
Pharyngitis	10 (2%)	12 (1%)	9 (1%)

*Rounded to the closest unit percentage

Additional adverse reactions of medical significance observed at a higher incidence than in placebo in adults and adolescents aged 12 years and older exposed to levocetirizine dihydrochloride are syncope (0.2%) and weight increased (0.5%).

Pediatric Patients 6 to 12 Years of Age

A total of 243 pediatric patients 6 to 12 years of age received levocetirizine dihydrochloride 5 mg once daily in two short-term placebo controlled double-blind trials. The mean age of the patients was 9.8 years, 79 (32%) were 6 to 8 years of age, and 50% were Caucasian. Table 2 lists adverse reactions that were reported in greater than or equal to 2% of subjects aged 6 to 12 years exposed to levocetirizine dihydrochloride 5 mg in placebo-controlled clinical trials and that were more common with levocetirizine dihydrochloride than placebo.

Table 2 Adverse Reactions Reported in $\geq 2\%$ * of Subjects Aged 6 to 12 Years Exposed to Levocetirizine Dihydrochloride 5 mg Once Daily in Placebo-Controlled Clinical Trials 4 and 6 Weeks in Duration

Adverse Reactions	Levocetirizine Dihydrochloride 5 mg (n = 243)	Placebo (n = 240)
Pyrexia	10 (4%)	5 (2%)
Cough	8 (3%)	2 (< 1%)
Somnolence	7 (3%)	1 (< 1%)
Epistaxis	6 (2%)	1 (< 1%)

*Rounded to the closest unit percentage

Pediatric Patients 1 to 5 Years of Age

A total of 114 pediatric patients 1 to 5 years of age received levocetirizine dihydrochloride 1.25 mg twice daily in a two week placebo-controlled double-blind safety trial. The mean age of the patients was 3.8 years, 32% were 1 to 2 years of age, 71% were Caucasian and 18% were Black. Table 3 lists adverse reactions that were reported in greater than or equal to 2% of subjects aged 1 to 5 years exposed to levocetirizine dihydrochloride 1.25 mg twice daily in the placebo-controlled safety trial and that were more common with levocetirizine dihydrochloride than placebo.

Table 3 Adverse Reactions Reported in $\geq 2\%$ * of Subjects Aged 1 to 5 Years Exposed to Levocetirizine Dihydrochloride 1.25 mg Twice Daily in a 2-Week Placebo-Controlled Clinical Trial

Adverse Reactions	Levocetirizine Dihydrochloride 1.25 mg Twice Daily (n = 114)	Placebo (n = 59)
Pyrexia	5 (4%)	1 (2%)
Diarrhea	4 (4%)	2 (3%)
Vomiting	4 (4%)	2 (3%)
Otitis Media	3 (3%)	0 (0%)

*Rounded to the closest unit percentage

Pediatric Patients 6 to 11 Months of Age

A total of 45 pediatric patients 6 to 11 months of age received levocetirizine dihydrochloride 1.25 mg once daily in a two week placebo-controlled double-blind safety trial. The mean age of the patients was 9 months, 51% were Caucasian and 31% were Black. Adverse reactions that were reported in more than 1 subject (i.e. greater than or equal to 3% of subjects) aged 6 to 11 months exposed to levocetirizine dihydrochloride 1.25 mg once daily in the placebo-controlled safety trial and that were more common with levocetirizine dihydrochloride than placebo included diarrhea and constipation which were reported in 6 (13%) and 1 (4%) and 3 (7%) and 1 (4%) children in the levocetirizine dihydrochloride and placebo-treated groups, respectively.

Long-Term Clinical Trials Experience

In two controlled clinical trials, 428 patients (190 males and 238 females) aged 12 years and older were treated with levocetirizine dihydrochloride 5 mg once daily for 4 or 6 months. The patient characteristics and the safety profile were similar to that seen in the short-term studies. Ten (2.3%) patients treated with levocetirizine dihydrochloride discontinued because of somnolence, fatigue or asthenia compared to 2 (< 1%) in the placebo group.

There are no long term clinical trials in children below 12 years of age with allergic rhinitis or chronic idiopathic urticaria.

Laboratory Test Abnormalities

Elevations of blood bilirubin and transaminases were reported in < 1% of patients in the clinical trials. The elevations were transient and did not lead to discontinuation in any patient.

6.2 Post-Marketing Experience

In addition to the adverse reactions reported during clinical trials and listed above, adverse events have also been identified during post-approval use of levocetirizine dihydrochloride. Because these events are reported voluntarily from a population of uncertain size, it is not always possible to reliably estimate their frequency or establish a causal relationship to drug exposure. Adverse events of hypersensitivity and anaphylaxis, increased appetite, angioedema, fixed drug eruption, pruritus, rash and urticaria, convulsion, paraesthesia, dizziness, tremor, dysgeusia, vertigo, movement disorders (including dystonia and oculogyric crisis), aggression and agitation, hallucinations, depression, insomnia, suicidal ideation, visual disturbances, blurred vision, palpitations, tachycardia, dyspnea, nausea, vomiting, hepatitis, dysuria, urinary retention, myalgia, and edema have been reported.

Besides these events reported under treatment with levocetirizine dihydrochloride, other potentially severe adverse events have been reported from the post-marketing experience with cetirizine. Since levocetirizine is the principal pharmacologically active component of cetirizine, one should take into account the fact that the following adverse events could also potentially occur under treatment with levocetirizine dihydrochloride: orofacial dyskinesia, severe hypotension, cholestasis, glomerulonephritis, still birth, tic, myoclonus, and extrapyramidal symptoms.

7 DRUG INTERACTIONS

In vitro data indicate that levocetirizine is unlikely to produce pharmacokinetic interactions through inhibition or induction of liver drug-metabolizing enzymes. No *in vivo* drug-drug interaction studies have been performed with levocetirizine. Drug interaction studies have been performed with racemic cetirizine.

7.1 Antipyrine, Azithromycin, Cimetidine, Erythromycin, Ketoconazole, Theophylline, and Pseudoephedrine

Pharmacokinetic interaction studies performed with racemic cetirizine demonstrated that cetirizine did not interact with antipyrine, pseudoephedrine, erythromycin, azithromycin, ketoconazole, and cimetidine. There was a small decrease (~16%) in the clearance of cetirizine caused by a 400 mg dose of theophylline. It is possible that higher theophylline doses could have a greater effect.

7.2 Ritonavir

Ritonavir increased the plasma AUC of cetirizine by about 42% accompanied by an increase in half-life (53%) and a decrease in clearance (29%) of cetirizine. The disposition of ritonavir was not altered by concomitant cetirizine administration.

8 USE IN SPECIFIC POPULATIONS

8.1 Pregnancy

Pregnancy Category B

There are no adequate and well-controlled studies in pregnant women. Because animal reproduction studies are not always predictive of human response, levocetirizine dihydrochloride should be used during pregnancy only if clearly needed.

Teratogenic Effects:

In rats and rabbits, levocetirizine was not teratogenic at oral doses approximately 320 and 390, respectively, times the maximum recommended daily oral dose in adults on a mg/m² basis.

8.3 Nursing Mothers

No peri- and post-natal animal studies have been conducted with levocetirizine. In mice, cetirizine caused retarded pup weight gain during lactation at an oral dose in dams that was approximately 40 times the maximum recommended daily oral dose in adults on a mg/m² basis. Studies in beagle dogs indicated that approximately 3% of the dose of cetirizine was excreted in milk. Cetirizine has been reported to be excreted in human breast milk. Because levocetirizine is also expected to be excreted in human milk, use of levocetirizine dihydrochloride in nursing mothers is not recommended.

8.4 Pediatric Use

The recommended dose of levocetirizine dihydrochloride for the treatment of the uncomplicated skin manifestations of chronic idiopathic urticaria in patients 6 months to 17 years of age is based on extrapolation of efficacy from adults 18 years of age and older [see *Clinical Studies (14)*].

The recommended dose of levocetirizine dihydrochloride in patients 6 months to 11 years of age for the treatment of the symptoms of perennial allergic rhinitis and chronic idiopathic urticaria and in patients 2 to 11 years of age for the treatment of symptoms of seasonal allergic rhinitis is based on cross-study comparisons of the systemic exposure of levocetirizine dihydrochloride in adults and pediatric patients and on the safety profile of levocetirizine dihydrochloride in both adult and pediatric patients at doses equal to or higher than the recommended dose for patients 6 months to 11 years of age.

The safety of levocetirizine dihydrochloride 5 mg once daily was evaluated in 243 pediatric patients 6 to 12 years of age in two placebo-controlled clinical trials lasting 4 and 6 weeks. The safety of levocetirizine dihydrochloride 1.25 mg twice daily was evaluated in one 2-week clinical trial in 114 pediatric patients 1 to 5 years of age and the safety of levocetirizine dihydrochloride 1.25 mg once daily was evaluated in one 2-week clinical trial in 45 pediatric patients 6 to 11 months of age [see *Adverse Reactions (6.1)*].

The effectiveness of levocetirizine dihydrochloride 1.25 mg once daily (6 months to 5 years of age) and 2.5 mg once daily (6 to 11 years of age) for the treatment of the symptoms of seasonal and perennial allergic rhinitis and chronic idiopathic urticaria is supported by the extrapolation of demonstrated efficacy of levocetirizine dihydrochloride 5 mg once daily in patients 12 years of age and older based on the pharmacokinetic comparison between adults and children.

Cross-study comparisons indicate that administration of a 5 mg dose of levocetirizine dihydrochloride to 6 to 12 year old pediatric seasonal allergic rhinitis patients resulted in about 2-fold the systemic exposure (AUC) observed when 5 mg of levocetirizine dihydrochloride was administered to healthy adults. Therefore, in children 6 to 11 years of age the recommended dose of 2.5 mg once daily should not be exceeded. In a population pharmacokinetics study the administration of 1.25 mg once daily in children 6 months to 5 years of age resulted in systemic exposure comparable to 5 mg once daily in adults. [see *Dosage and Administration (2.2)*; *Clinical Studies (14)*; and *Clinical Pharmacology (12.3)*].

8.5 Geriatric Use

Clinical studies of levocetirizine dihydrochloride for each approved indication did not include sufficient numbers of patients aged 65 years and older to determine whether they respond differently than younger patients. Other reported clinical experience has not identified differences in responses

between the elderly and younger patients. In general, dose selection for an elderly patient should be cautious, usually starting at the low end of the dosing range reflecting the greater frequency of decreased hepatic, renal, or cardiac function and of concomitant disease or other drug therapy.

8.6 Renal Impairment

Levocetirizine dihydrochloride is known to be substantially excreted by the kidneys and the risk of adverse reactions to this drug may be greater in patients with impaired renal function. Because elderly patients are more likely to have decreased renal function, care should be taken in dose selection and it may be useful to monitor renal function [see *Dosage and Administration (2)* and *Clinical Pharmacology (12.3)*].

8.7 Hepatic Impairment

As levocetirizine is mainly excreted unchanged by the kidneys, it is unlikely that the clearance of levocetirizine is significantly decreased in patients with solely hepatic impairment [see *Clinical Pharmacology (12.3)*].

10 OVERDOSAGE

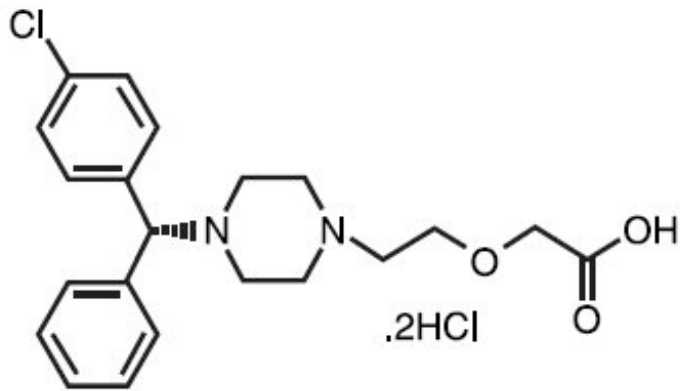
Overdosage has been reported with levocetirizine dihydrochloride.

Symptoms of overdose may include drowsiness in adults and initially agitation and restlessness, followed by drowsiness in children. There is no known specific antidote to levocetirizine dihydrochloride. Should overdose occur, symptomatic or supportive treatment is recommended. Levocetirizine dihydrochloride is not effectively removed by dialysis, and dialysis will be ineffective unless a dialyzable agent has been concomitantly ingested.

The acute maximal non-lethal oral dose of levocetirizine was 240 mg/kg in mice (approximately 190 times the maximum recommended daily oral dose in adults, approximately 230 times the maximum recommended daily oral dose in children 6 to 11 years of age, and approximately 180 times the maximum recommended daily oral dose in children 6 months to 5 years of age on a mg/m² basis). In rats the maximal non-lethal oral dose was 240 mg/kg (approximately 390 times the maximum recommended daily oral dose in adults, approximately 460 times the maximum recommended daily oral dose in children 6 to 11 years of age, and approximately 370 times the maximum recommended daily oral dose in children 6 months to 5 years of age on a mg/m² basis).

11 DESCRIPTION

Levocetirizine dihydrochloride, the active component of levocetirizine dihydrochloride tablets, is an orally active H₁-receptor antagonist. The chemical name is (R)-[2-[4-[(4-chlorophenyl) phenylmethyl]-1-piperazinyl] ethoxy] acetic acid dihydrochloride. Levocetirizine dihydrochloride is the R enantiomer of cetirizine hydrochloride, a racemic compound with antihistaminic properties. The molecular formula of levocetirizine dihydrochloride is C₂₁H₂₅ClN₂O₃•2HCl. The molecular weight is 461.82 and the chemical structure is shown below:



Levocetirizine dihydrochloride is a white to off-white, crystalline powder and is soluble in water and methanol.

Levocetirizine dihydrochloride 5 mg tablets are formulated as immediate release, white to off-white, oval-shaped, biconvex, scored, film-coated tablets, debossed with 'R' and 'T' on either side of the scoreline on one side and '7' and '3' on either side of the scoreline on the other side. Inactive ingredients are: colloidal silicon dioxide, lactose monohydrate, magnesium stearate, and microcrystalline cellulose. The film-coating contains hypromellose, polyethylene glycol 400, and titanium dioxide.

12 CLINICAL PHARMACOLOGY

12.1 Mechanism of Action

Levocetirizine, the active enantiomer of cetirizine, is an anti-histamine; its principal effects are mediated via selective inhibition of H₁ receptors. The antihistaminic activity of levocetirizine has been documented in a variety of animal and human models. *In vitro* binding studies revealed that levocetirizine has an affinity for the human H₁-receptor 2-fold higher than that of cetirizine (K_i = 3 nmol/L vs. 6 nmol/L, respectively). The clinical relevance of this finding is unknown.

12.2 Pharmacodynamics

Studies in adult healthy subjects showed that levocetirizine at doses of 2.5 mg and 5 mg inhibited the skin wheal and flare caused by the intradermal injection of histamine. In contrast, dextrocetirizine exhibited no clear change in the inhibition of the wheal and flare reaction. Levocetirizine at a dose of 5 mg inhibited the wheal and flare caused by intradermal injection of histamine in 14 pediatric subjects (aged 6 to 11 years) and the activity persisted for at least 24 hours. The clinical relevance of histamine wheal skin testing is unknown.

A QT/QTc study using a single dose of 30 mg of levocetirizine did not demonstrate an effect on the QTc interval. While a single dose of levocetirizine had no effect, the effects of levocetirizine may not be at steady state following single dose. The effect of levocetirizine on the QTc interval following multiple dose administration is unknown. Levocetirizine is not expected to have QT/QTc effects because of the results of QTc studies with cetirizine and the long post-marketing history of cetirizine without reports of QT prolongation.

12.3 Pharmacokinetics

Levocetirizine exhibited linear pharmacokinetics over the therapeutic dose range in adult healthy subjects.

- **Absorption**

Levocetirizine is rapidly and extensively absorbed following oral administration. In adults, peak plasma concentrations are achieved 0.9 hour after administration of the oral tablet. The accumulation ratio following daily oral administration is 1.12 with steady state achieved after 2 days. Peak concentrations are typically 270 ng/mL and 308 ng/mL following a single and a repeated 5 mg once daily dose, respectively. Food had no effect on the extent of exposure (AUC) of the levocetirizine tablet, but T_{max} was delayed by about 1.25 hours and C_{max} was decreased by about 36% after administration with a high fat meal; therefore, levocetirizine can be administered with or without food.

A dose of 5 mg (10 mL) of levocetirizine dihydrochloride oral solution is bioequivalent to a 5 mg dose of levocetirizine dihydrochloride tablets. Following oral administration of a 5 mg dose of levocetirizine dihydrochloride oral solution to healthy adult subjects, the mean peak plasma concentrations were achieved approximately 0.5 hour post-dose.

- **Distribution**

The mean plasma protein binding of levocetirizine *in vitro* ranged from 91 to 92%, independent of concentration in the range of 90 to 5000 ng/mL, which includes the therapeutic plasma levels observed. Following oral dosing, the average apparent volume of distribution is approximately 0.4 L/kg, representative of distribution in total body water.

- **Metabolism**

The extent of metabolism of levocetirizine in humans is less than 14% of the dose and therefore differences resulting from genetic polymorphism or concomitant intake of hepatic drug metabolizing enzyme inhibitors are expected to be negligible. Metabolic pathways include aromatic oxidation, N- and O-dealkylation, and taurine conjugation. Dealkylation pathways are primarily mediated by CYP 3A4 while aromatic oxidation involves multiple and/or unidentified CYP isoforms.

- **Elimination**

The plasma half-life in adult healthy subjects was about 8 to 9 hours after administration of oral tablets and oral solution, and the mean oral total body clearance for levocetirizine was approximately 0.63 mL/kg/min. The major route of excretion of levocetirizine and its metabolites is via urine, accounting for a mean of 85.4% of the dose. Excretion via feces accounts for only 12.9% of the dose. Levocetirizine is excreted both by glomerular filtration and active tubular secretion. Renal clearance of levocetirizine correlates with that of creatinine clearance. In patients with renal impairment the clearance of levocetirizine is reduced.

- **Drug Interaction Studies**

In vitro data on metabolite interaction indicate that levocetirizine is unlikely to produce, or be subject to metabolic interactions. Levocetirizine at concentrations well above C_{max} level achieved within the therapeutic dose ranges is not an inhibitor of CYP isoenzymes 1A2, 2C9, 2C19, 2A1, 2D6, 2E1, and 3A4, and is not an inducer of UGT1A or CYP isoenzymes 1A2, 2C9 and 3A4.

No formal *in vivo* drug interaction studies have been performed with levocetirizine. Studies have been performed with the racemic cetirizine [see *Drug Interactions (7)*].

- **Pediatric Patients**

Data from a pediatric pharmacokinetic study with oral administration of a single dose of 5 mg levocetirizine in 14 children age 6 to 11 years with body weight ranging between 20 and 40 kg show that C_{max} and AUC values are about 2-fold greater than that reported in healthy adult subjects in a cross-study comparison. The mean C_{max} was 450 ng/mL, occurring at a mean time of 1.2 hours, weight-

normalized, total body clearance was 30% greater, and the elimination half-life 24% shorter in this pediatric population than in adults.

Dedicated pharmacokinetic studies have not been conducted in pediatric patients younger than 6 years of age. A retrospective population pharmacokinetic analysis was conducted in 324 subjects (181 children 1 to 5 years of age, 18 children 6 to 11 years of age, and 124 adults 18 to 55 years of age) who received single or multiple doses of levocetirizine ranging from 1.25 mg to 30 mg. Data generated from this analysis indicated that administration of 1.25 mg once daily to children 6 months to 5 years of age results in plasma concentrations similar to those of adults receiving 5 mg once daily.

- **Geriatric Patients**

Limited pharmacokinetic data are available in elderly subjects. Following once daily repeat oral administration of 30 mg levocetirizine for 6 days in 9 elderly subjects (65 to 74 years of age), the total body clearance was approximately 33% lower compared to that in younger adults. The disposition of racemic cetirizine has been shown to be dependent on renal function rather than on age. This finding would also be applicable for levocetirizine, as levocetirizine and cetirizine are both predominantly excreted in urine. Therefore, the levocetirizine dihydrochloride dose should be adjusted in accordance with renal function in elderly patients [see *Dosage and Administration* (2)].

- **Gender**

Pharmacokinetic results for 77 patients (40 men, 37 women) were evaluated for potential effect of gender. The half-life was slightly shorter in women (7.08 ± 1.72 hr) than in men (8.62 ± 1.84 hr); however, the body weight-adjusted oral clearance in women (0.67 ± 0.16 mL/min/kg) appears to be comparable to that in men (0.59 ± 0.12 mL/min/kg). The same daily doses and dosing intervals are applicable for men and women with normal renal function.

- **Race**

The effect of race on levocetirizine has not been studied. As levocetirizine is primarily renally excreted, and there are no important racial differences in creatinine clearance, pharmacokinetic characteristics of levocetirizine are not expected to be different across races. No race-related differences in the kinetics of racemic cetirizine have been observed.

- **Renal Impairment**

Levocetirizine exposure (AUC) exhibited 1.8-, 3.2-, 4.3-, and 5.7-fold increase in mild, moderate, severe, renal impaired, and end-stage renal disease patients, respectively, compared to healthy subjects. The corresponding increases of half-life estimates were 1.4-, 2-, 2.9-, and 4-fold, respectively.

The total body clearance of levocetirizine after oral dosing was correlated to the creatinine clearance and was progressively reduced based on severity of renal impairment. Therefore, it is recommended to adjust the dose and dosing intervals of levocetirizine based on creatinine clearance in patients with mild, moderate, or severe renal impairment. In end-stage renal disease patients ($CL_{CR} < 10$ mL/min) levocetirizine is contraindicated. The amount of levocetirizine removed during a standard 4-hour hemodialysis procedure was $< 10\%$.

The dosage of levocetirizine dihydrochloride should be reduced in patients with mild renal impairment. Both the dosage and frequency of administration should be reduced in patients with moderate or severe renal impairment [see *Dosage and Administration* (2.4)].

- **Hepatic Impairment**

Levocetirizine dihydrochloride has not been studied in patients with hepatic impairment. The non-renal

clearance (indicative of hepatic contribution) was found to constitute about 28% of the total body clearance in healthy adult subjects after oral administration.

As levocetirizine is mainly excreted unchanged by the kidney, it is unlikely that the clearance of levocetirizine is significantly decreased in patients with solely hepatic impairment [see *Dosage and Administration (2)*].

13 NONCLINICAL TOXICOLOGY

13.1 Carcinogenesis, Mutagenesis, Impairment of Fertility

No carcinogenicity studies have been performed with levocetirizine. However, evaluation of cetirizine carcinogenicity studies are relevant for determination of the carcinogenic potential of levocetirizine. In a 2-year carcinogenicity study, in rats, cetirizine was not carcinogenic at dietary doses up to 20 mg/kg (approximately 15 times the maximum recommended daily oral dose in adults, approximately 10 times the maximum recommended daily oral dose in children 6 to 11 years of age and approximately 15 times the maximum recommended daily oral dose in children 6 months to 5 years of age on a mg/m² basis). In a 2-year carcinogenicity study in mice, cetirizine caused an increased incidence of benign hepatic tumors in males at a dietary dose of 16 mg/kg (approximately 6 times the maximum recommended daily oral dose in adults, approximately 4 times the maximum recommended daily oral dose in children 6 to 11 years of age, and approximately 6 times the maximum recommended daily oral dose in children 6 months to 5 years of age on a mg/m² basis). No increased incidence of benign tumors was observed at a dietary dose of 4 mg/kg (approximately 2 times the maximum recommended daily oral dose in adults, equivalent to the maximum recommended daily oral dose in children 6 to 11 years of age and approximately 2 times the maximum recommended daily oral dose in children 6 months to 5 years of age on a mg/m² basis). The clinical significance of these findings during long-term use of levocetirizine dihydrochloride is not known.

Levocetirizine was not mutagenic in the Ames test, and not clastogenic in the human lymphocyte assay, the mouse lymphoma assay, and *in vivo* micronucleus test in mice.

In a fertility and general reproductive performance study in mice, cetirizine did not impair fertility at an oral dose of 64 mg/kg (approximately 25 times the recommended daily oral dose in adults on a mg/m² basis).

13.2 Animal Toxicology

Reproductive Toxicology Studies

In rats and rabbits, levocetirizine was not teratogenic at oral doses up to 200 and 120 mg/kg, respectively, (approximately 320 and 390, respectively, times the maximum recommended daily oral dose in adults on a mg/m² basis).

In mice, cetirizine caused retarded pup weight gain during lactation at an oral dose in dams of 96 mg/kg (approximately 40 times the maximum recommended daily oral dose in adults on a mg/m² basis).

14 CLINICAL STUDIES

14.1 Seasonal and Perennial Allergic Rhinitis

Adults and Adolescents 12 Years of Age and Older

The efficacy of levocetirizine dihydrochloride was evaluated in six randomized, placebo-controlled, double-blind clinical trials in adult and adolescent patients 12 years and older with symptoms of seasonal allergic rhinitis or perennial allergic rhinitis. The six clinical trials include three dose-ranging trials of 2 to 4 weeks duration, one 2-week efficacy trial in patients with seasonal allergic rhinitis, and two efficacy trials (one 6-week and one 6-month) in patients with perennial allergic rhinitis.

These trials included a total of 2412 patients (1068 males and 1344 females) of whom 265 were adolescents 12 to 17 years of age. Efficacy was assessed using a total symptom score from patient recording of 4 symptoms (sneezing, rhinorrhea, nasal pruritus, and ocular pruritus) in five studies and 5 symptoms (sneezing, rhinorrhea, nasal pruritus, ocular pruritus, and nasal congestion) in one study. Patients recorded symptoms using a 0 to 3 categorical severity scale (0 = absent, 1 = mild, 2 = moderate, 3 = severe) once daily in the evening reflective of the 24 hour treatment period. In one study, patients also recorded these symptoms in an instantaneous (1 hour before the next dose) manner. The primary endpoint was the mean total symptom score averaged over the first week and over 2 weeks for seasonal allergic rhinitis trials, and 4 weeks for perennial allergic rhinitis trials.

The three dose-ranging trials were conducted to evaluate the efficacy of levocetirizine dihydrochloride 2.5, 5, and 10 mg once daily in the evening. One trial was 2 weeks in duration conducted in patients with seasonal allergic rhinitis, and two trials were 4 weeks in duration conducted in patients with perennial allergic rhinitis. In these trials, each of the three doses of levocetirizine dihydrochloride demonstrated greater decrease in the reflective total symptom score than placebo and the difference was statistically significant for all three doses in two of the studies. Results for two of these trials are shown in Table 4.

Table 4 Mean Reflective Total Symptom Score* in Allergic Rhinitis Dose-Ranging Trials

Treatment	N	Baseline	On Treatment Adjusted Mean	Difference from Placebo Estimate	95% CI	p-value
Seasonal Allergic Rhinitis Trial – Reflective total symptom score						
Levocetirizine dihydrochloride 2.5 mg	116	7.83	4.27	0.91	(0.37, 1.45)	0.001
Levocetirizine dihydrochloride 5 mg	115	7.45	4.06	1.11	(0.57, 1.65)	< 0.001
Levocetirizine dihydrochloride 10 mg	118	7.15	3.57	1.61	(1.07, 2.15)	< 0.001
Placebo	118	7.94	5.17			
Perennial Allergic Rhinitis Trial – Reflective total symptom score						
Levocetirizine dihydrochloride 2.5 mg	133	7.14	4.12	1.17	(0.71, 1.63)	< 0.001
Levocetirizine dihydrochloride 5 mg	127	7.18	4.07	1.22	(0.76, 1.69)	< 0.001
Levocetirizine dihydrochloride 10 mg	129	7.58	4.19	1.10	(0.64, 1.57)	< 0.001
Placebo	128	7.22	5.29			

*Total symptom score is the sum of individual symptoms of sneezing, rhinorrhea, nasal pruritus, and ocular pruritus as assessed by patients on a 0 to 3 categorical severity scale.

One clinical trial was designed to evaluate the efficacy of levocetirizine dihydrochloride 5 mg once daily in the evening compared with placebo in patients with seasonal allergic rhinitis over a 2-week treatment period. In this trial, levocetirizine dihydrochloride 5 mg demonstrated a greater decrease from baseline in the reflective and instantaneous total symptom score than placebo, and the difference was statistically significant (see Table 5). The results of the instantaneous total symptom score support efficacy at the end of the dosing interval.

One clinical trial evaluated the efficacy of levocetirizine dihydrochloride 5 mg once daily in the evening compared to placebo in patients with perennial allergic rhinitis over a 6-week treatment period. Another trial conducted over a 6-month treatment period assessed efficacy at 4 weeks. Levocetirizine dihydrochloride 5 mg demonstrated a greater decrease from baseline in the reflective total symptom score than placebo and the difference from placebo was statistically significant. Results of one of these

trials are shown in Table 5.

Table 5 Mean Reflective Total Symptom Score* and Instantaneous Total Symptom Score in Allergic Rhinitis Trials

Treatment	N	Baseline	On Treatment Adjusted Mean	Difference from Placebo Estimate	95% CI	p-value
Seasonal Allergic Rhinitis Trial – Reflective total symptoms score						
Levocetirizine dihydrochloride 5 mg	118	8.40	5.20	0.89	(0.30, 1.47)	0.003
Placebo	117	8.50	6.09			
Seasonal Allergic Rhinitis Trial – Instantaneous total symptom score						
Levocetirizine dihydrochloride 5 mg	118	7.24	4.58	0.73	(0.17, 1.28)	0.011
Placebo	117	7.48	5.30			
Perennial Allergic Rhinitis Trial – Reflective total symptom score						
Levocetirizine dihydrochloride 5 mg	150	7.69	3.93	1.17	(0.70, 1.64)	< 0.001
Placebo	142	7.44	5.10			

*Total symptom score is the sum of individual symptoms of sneezing, rhinorrhea, nasal pruritus, and ocular pruritus as assessed by patients on a 0 to 3 categorical severity scale.

Onset of action was evaluated in two environmental exposure unit studies in allergic rhinitis patients with a single dose of levocetirizine dihydrochloride 2.5 or 5 mg. Levocetirizine dihydrochloride 5 mg was found to have an onset of action 1 hour after oral intake. Onset of action was also assessed from the daily recording of symptoms in the evening before dosing in the seasonal and perennial allergic rhinitis trials. In these trials, onset of effect was seen after 1 day of dosing.

Pediatric Patients Less than 12 Years of Age

There are no clinical efficacy trials with levocetirizine dihydrochloride 2.5 mg once daily in pediatric patients under 12 years of age, and no clinical efficacy trials with levocetirizine dihydrochloride 1.25 mg once daily in pediatric patients 6 months to 5 years of age. The clinical efficacy of levocetirizine dihydrochloride in pediatric patients under 12 years of age has been extrapolated from adult clinical efficacy trials based on pharmacokinetic comparisons [see *Use in Specific Populations (8.4)*].

14.2 Chronic Idiopathic Urticaria

Adult Patients 18 Years of Age and Older

The efficacy of levocetirizine dihydrochloride for the treatment of the uncomplicated skin manifestations of chronic idiopathic urticaria was evaluated in two multi-center, randomized, placebo-controlled, double-blind clinical trials of 4 weeks duration in adult patients 18 to 85 years of age with chronic idiopathic urticaria. The two trials included one 4-week dose-ranging trial and one 4-week single-dose level efficacy trial. These trials included 423 patients (139 males and 284 females). Most patients (> 90%) were Caucasian and the mean age was 41. Of these patients, 146 received levocetirizine dihydrochloride 5 mg once daily in the evening. Efficacy was assessed based on patient recording of pruritus severity on a severity score of 0 to 3 (0 = none to 3 = severe). The primary efficacy endpoint was the mean reflective pruritus severity score over the first week and over the entire treatment period. Additional efficacy variables were the instantaneous pruritus severity score, the number and size of wheals, and duration of pruritus.

The dose-ranging trial was conducted to evaluate the efficacy of levocetirizine dihydrochloride 2.5, 5, and 10 mg once daily in the evening. In this trial, each of the three doses of levocetirizine dihydrochloride demonstrated greater decrease in the reflective pruritus severity score than placebo

and the difference was statistically significant for all three doses (see Table 6).

The single dose level trial evaluated the efficacy of levocetirizine dihydrochloride 5 mg once daily in the evening compared to placebo in patients with chronic idiopathic urticaria over a 4-week treatment period. Levocetirizine dihydrochloride 5 mg demonstrated a greater decrease from baseline in the reflective pruritus severity score than placebo and the difference from placebo was statistically significant.

Duration of pruritus, number and size of wheals, and instantaneous pruritus severity score also showed significant improvement over placebo. The significant improvement in the instantaneous pruritus severity score over placebo confirmed end of dosing interval efficacy (see Table 6).

Table 6 Mean Reflective Pruritus Severity Score in Chronic Idiopathic Urticaria Trials

Treatment	N	Baseline	On Treatment Adjusted Mean	Difference from Placebo		
				Estimate	95% CI	p-value
Dose-Ranging Trial – Reflective pruritus severity score						
Levocetirizine dihydrochloride 2.5 mg	69	2.08	1.02	0.82	(0.58, 1.06)	< 0.001
Levocetirizine dihydrochloride 5 mg	62	2.07	0.92	0.91	(0.66, 1.16)	< 0.001
Levocetirizine dihydrochloride 10 mg	55	2.04	0.73	1.11	(0.85, 1.37)	< 0.001
Placebo	60	2.25	1.84			
Chronic Idiopathic Urticaria Trial – Reflective pruritus severity score						
Levocetirizine dihydrochloride 5 mg	80	2.07	0.94	0.62	(0.38, 0.86)	< 0.001
Placebo	82	2.06	1.56			

Pediatric Patients

There are no clinical efficacy trials in pediatric patients with chronic idiopathic urticaria [see *Use in Specific Populations* (8.4)].

16 HOW SUPPLIED/STORAGE AND HANDLING

Levocetirizine dihydrochloride tablets are white to off-white, oval-shaped, biconvex, functionally scored, film-coated tablets, debossed with ‘R’ and ‘T’ on either side of the scoreline on one side and ‘7’ and ‘3’ on either side of the scoreline on the other side and contain 5 mg levocetirizine dihydrochloride. They are supplied in HDPE bottles and blisters.

NDC 63304-433-03 Bottles of 10

NDC 63304-433-10 Bottles of 1000

NDC 63304-433-69 Blister pack of 10

Storage:

Store at 20° - 25° C (68° - 77° F) [See USP Controlled Room Temperature].

Dispense in a tight, light-resistant container with a child-resistant closure.

17 PATIENT COUNSELING INFORMATION

17.1 Somnolence

Caution patients against engaging in hazardous occupations requiring complete mental alertness, and motor coordination such as operating machinery or driving a motor vehicle after ingestion of levocetirizine dihydrochloride tablets.

17.2 Concomitant Use of Alcohol and other Central Nervous System Depressants

Instruct patients to avoid concurrent use of levocetirizine dihydrochloride tablets with alcohol or other central nervous system depressants because additional reduction in mental alertness may occur.

17.3 Dosing of Levocetirizine Dihydrochloride Tablets

Do not exceed the recommended daily dose in adults and adolescents 12 years of age and older of 5 mg once daily in the evening. In children 6 to 11 years of age the recommended dose is 2.5 mg once daily in the evening. Advise patients to not ingest more than the recommended dose of levocetirizine dihydrochloride tablets because of the increased risk of somnolence at higher doses.

Manufactured for:

Ranbaxy Pharmaceuticals Inc.

Jacksonville, FL 32257 USA

January 2015 FDA-07

PACKAGE LABEL-PRINCIPAL DISPLAY PANEL

RANBAXY

NDC 63304-433-03

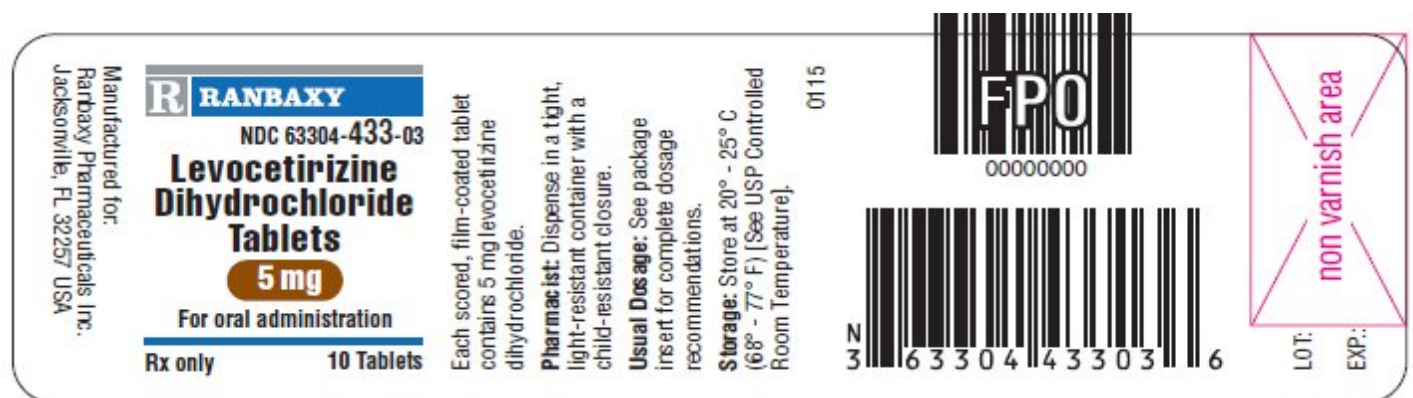
LEVOCETIRIZINE DIHYDROCHLORIDE TABLETS

5 mg

For oral administration

Rx only

10 Tablets



LEVOCETIRIZINE DIHYDROCHLORIDE

levocetirizine dihydrochloride tablet, film coated

Product Information

Product Type

HUMAN PRESCRIPTION DRUG

Item Code (Source)

NDC:63304-433

Route of Administration ORAL

Active Ingredient/Active Moiety

Ingredient Name	Basis of Strength	Strength
LEVOCETIRIZINE DIHYDROCHLORIDE (UNII: SOD6A38AGA) (LEVOCETIRIZINE - UNII:6U5EA9RT2O)	LEVOCETIRIZINE DIHYDROCHLORIDE	5 mg

Inactive Ingredients

Ingredient Name	Strength
SILICON DIOXIDE (UNII: ETJ7Z6XBU4)	
HYPROMELLOSES (UNII: 3NXW29V3WO)	
LACTOSE MONOHYDRATE (UNII: EWQ57Q8I5X)	
MAGNESIUM STEARATE (UNII: 70097M6I30)	
CELLULOSE, MICROCRYSTALLINE (UNII: OP1R32D61U)	
TITANIUM DIOXIDE (UNII: 15FIX9V2JP)	
POLYETHYLENE GLYCOL 400 (UNII: B697894SGQ)	

Product Characteristics

Color	white (off-white)	Score	2 pieces
Shape	OVAL (biconvex)	Size	8mm
Flavor		Imprint Code	R;I;7;3
Contains			

Packaging

#	Item Code	Package Description	Marketing Start Date	Marketing End Date
1	NDC:63304-433-03	10 in 1 BOTTLE; Type 0: Not a Combination Product		
2	NDC:63304-433-10	1000 in 1 BOTTLE; Type 0: Not a Combination Product		
3	NDC:63304-433-69	1 in 1 CARTON		
3		10 in 1 BLISTER PACK; Type 0: Not a Combination Product		

Marketing Information

Marketing Category	Application Number or Monograph Citation	Marketing Start Date	Marketing End Date
ANDA	ANDA201653	02/25/2013	

Labeler - Ranbaxy Pharmaceuticals Inc. (937890044)

Registrant - Ranbaxy Pharmaceuticals Inc. (937890044)

Establishment

Name	Address	ID/FEI	Business Operations
Ohm Laboratories Inc.		184769029	MANUFACTURE(63304-433)

Establishment

Name	Address	ID/FEI	Business Operations
Glenmark Generics Limited		650283737	API MANUFACTURE(63304-433)

Revised: 7/2015

Ranbaxy Pharmaceuticals Inc.