

ARTICADENT- articaine hydrochloride and epinephrine bitartrate injection, solution

Dentsply Pharmaceutical

HIGHLIGHTS OF PRESCRIBING INFORMATION

These highlights do not include all the information needed to use ARTICADENT safely and effectively. See full prescribing information for ARTICADENT.

Articadent® (articaine hydrochloride and epinephrine injection), for intraoral submucosal infiltration use
Initial U.S. Approval: 2000

RECENT MAJOR CHANGES

WARNINGS AND PRECAUTIONS, Methemoglobinemia (5.4)

INDICATIONS AND USAGE

ARTICADENT is a combination of articaine HCl, an amide local anesthetic, and epinephrine, a vasoconstrictor, is indicated for local, infiltrative, or conductive anesthesia in both simple and complex dental procedures in adults and pediatric patients 4 years of age or older. (1)

DOSAGE AND ADMINISTRATION

- For dental procedures by intraoral submucosal infiltration or nerve block. (2.1)
 - For infiltration: 0.5-2.5 mL (20-100 mg articaine HCl)
 - For nerve block: 0.5-3.4 mL (20-136 mg articaine HCl)
 - For oral surgery: 1.0-5.1 mL (40-204 mg articaine HCl)
- For most routine dental procedures, ARTICADENT containing epinephrine 1:200,000 is preferred. However, when more pronounced hemostasis or improved visualization of the surgical field are required, ARTICADENT containing epinephrine 1:100,000 may be used. (2.1)
- Maximum recommended dosages (2.2):
 - Healthy adults: 7 mg/kg of articaine HCl and 0.0017 mg/kg of epinephrine (equivalent to 0.175 mL/kg for either product presentation, articaine HCl and epinephrine 1:100,000 or 1:200,000)
 - Pediatric patients: 4-16 years: 7 mg/kg of articaine HCl and 0.0017 mg/kg of epinephrine (equivalent to 0.175 mL/kg for either product presentation, articaine HCl and epinephrine 1:100,000 or 1:200,000)

DOSAGE FORMS AND STRENGTHS

Injection provided in:

- Glass cartridges (single-dose) containing:
 - Articaine hydrochloride 4% (40 mg/mL) and epinephrine 1:200,000 (as epinephrine bitartrate 0.009 mg/mL) (3)
 - Articaine hydrochloride 4% (40 mg/mL) and epinephrine 1:100,000 (as epinephrine bitartrate 0.018 mg/mL) (3)

CONTRAINDICATIONS

Known hypersensitivity to sulfite. (4)

WARNINGS AND PRECAUTIONS

Accidental Intravascular Injection: May be associated with convulsions followed by coma and respiratory arrest.

Resuscitative equipment, oxygen and other resuscitative drugs should be available. (5.1)

Systemic Toxicity: Systemic absorption of ARTICADENT can produce effects on the central nervous and cardiovascular systems. (5.2)

Vasoconstrictor Toxicity: Local anesthetic solutions like ARTICADENT that contain a vasoconstrictor should be used cautiously, especially in patients with impaired cardiovascular function or vascular disease. (5.3)

Methemoglobinemia: Cases of methemoglobinemia have been reported in association with local anesthetic use. (5.4)

ADVERSE REACTIONS

The most common adverse reactions (incidence >2%) are headache and pain. (6.1) To report SUSPECTED ADVERSE REACTIONS, contact DENTSPLY Pharmaceutical at 1-800-989-8826 or FDA at 1-800-FDA-1088 or www.fda.gov/medwatch.

DRUG INTERACTIONS

Monoamine Oxidase Inhibitors, Nonselective Beta-Adrenergic Antagonists, or Tricyclic Antidepressants: May produce severe, prolonged hypertension (7)

Phenothiazines and Butyrophenones: May reduce or reverse the pressor effect of epinephrine (7)

USE IN SPECIFIC POPULATIONS

Pregnancy: Based on animal studies, may cause fetal harm. (8.1)

Nursing Mothers: Exercise caution when administering to a nursing woman. (8.3)

Pediatric Use: Safety and effectiveness in pediatric patients below the age of 4 years have not been established. (8.4)

See 17 for **PATIENT COUNSELING INFORMATION**.

Revised: 7/2019

FULL PRESCRIBING INFORMATION: CONTENTS*

1 INDICATIONS AND USAGE

2 DOSAGE AND ADMINISTRATION

- 2.1 Important Dosage Information
- 2.2 Maximum Recommended Dosages
- 2.3 Dosage in Specific Populations
- 2.4 Important Administration Instructions

3 DOSAGE FORMS AND STRENGTHS

4 CONTRAINDICATIONS

5 WARNINGS AND PRECAUTIONS

- 5.1 Accidental Intravascular Injection
- 5.2 Systemic Toxicity
- 5.3 Vasoconstrictor Toxicity
- 5.4 Methemoglobinemia
- 5.5 Anaphylaxis and Allergic-Type Reactions

6 ADVERSE REACTIONS

- 6.1 Clinical Studies Experience
- 6.2 Postmarketing Experience

7 DRUG INTERACTIONS

8 USE IN SPECIFIC POPULATIONS

- 8.1 Pregnancy
- 8.3 Nursing Mothers
- 8.4 Pediatric Use
- 8.5 Geriatric Use
- 8.6 Renal and Hepatic Impairment

10 OVERDOSAGE

11 DESCRIPTION

12 CLINICAL PHARMACOLOGY

- 12.1 Mechanism of Action
- 12.2 Pharmacodynamics
- 12.3 Pharmacokinetics

13 NONCLINICAL TOXICOLOGY

- 13.1 Carcinogenesis, Mutagenesis, Impairment of Fertility

14 CLINICAL STUDIES

15 REFERENCES

16 HOW SUPPLIED/STORAGE AND HANDLING

17 PATIENT COUNSELING INFORMATION

* Sections or subsections omitted from the full prescribing information are not listed.

FULL PRESCRIBING INFORMATION

1 INDICATIONS AND USAGE

ARTICADENT is indicated for local, infiltrative, or conductive anesthesia in both simple and complex dental procedures in adults and pediatric patients 4 years of age or older.

2 DOSAGE AND ADMINISTRATION

2.1 Important Dosage Information

Table 1 summarizes the recommended dosages of ARTICADENT administered by intraoral submucosal infiltration or nerve block for various types of anesthetic dental procedures in healthy adults and pediatric patients.

Table 1: Recommended Dosages for Both Strengths

Procedure	ARTICADENT Injection	
	Volume (mL)	Total dose of articaine HCl (mg)
Infiltration	0.5 mL to 2.5 mL	20 mg to 100 mg
Nerve block	0.5 mL to 3.4 mL	20 mg to 136 mg
Oral surgery	1 mL to 5.1 mL	40 mg to 204 mg

The recommended dosages of ARTICADENT in healthy adults serve only as a guide to the amount of anesthetic required for most routine dental procedures. The dosages to be used in adults depend on several factors such as type and extent of surgical procedure, depth of anesthesia, degree of muscular relaxation, and condition of the patient. In all cases, administer the lowest dosage that will produce the desired result.

The dosages of ARTICADENT to be used in pediatric patients aged 4 to 16 years old are determined by the age and weight of the patient and the type of dental procedure. For most routine dental procedures, ARTICADENT containing epinephrine 1:200,000 is preferred. However, when more pronounced hemostasis or improved visualization of the surgical field are required, ARTICADENT containing epinephrine 1:100,000 may be used.

The onset of anesthesia and the duration of anesthesia are proportional to the dosage of the local anesthetic used. Exercise caution when employing large volumes because the incidence of adverse reactions may be dose-related.

2.2 Maximum Recommended Dosages

- **Healthy Adults:** The maximum recommended dosage of ARTICADENT is 7 mg/kg of articaine and 0.0017 mg/kg of epinephrine (equivalent to 0.175 mL/kg for either product presentation, articaine HCl and 1:100,000 or 1:200,000 epinephrine).
- **Pediatric Patients Ages 4 to 16 Years:** The maximum recommended dosage of ARTICADENT is 7 mg/kg of articaine and 0.0017 mg/kg of epinephrine (equivalent to 0.175 mL/kg for either product presentation, articaine HCl and 1:100,000 or 1:200,000 epinephrine) [see *Use in Specific Populations (8.4)*].

2.3 Dosage in Specific Populations

Lower dosages or dosage reduction may be required in debilitated patients, acutely ill patients, elderly patients, and pediatric patients commensurate with their age and physical condition. No studies have been performed in patients with renal or liver impairment. Exercise caution when using ARTICADENT in patients with severe liver disease. [see *Warnings and Precautions (5.2)*, *Use in Specific Populations (8.4, 8.5, and 8.6)*].

2.4 Important Administration Instructions

Visually inspect ARTICADENT for particulate matter and discoloration prior to administration.

Prior to using the glass cartridges, disinfect by wiping the cap thoroughly with USP grade isopropyl alcohol (70%). Avoid use of isopropyl alcohol, as well as solutions of ethyl alcohol that are not of USP grade because they may contain denaturants that are injurious to rubber. Immersion is not recommended. Discard unused portion.

3 DOSAGE FORMS AND STRENGTHS

Injection (clear, colorless solution), provided in:

- Glass cartridges (single-dose) containing (less than a full cartridge or more than one cartridge may be used for an individual patient):
 - Articaine hydrochloride 4% (40 mg/mL) and epinephrine 1:200,000 (as epinephrine bitartrate 0.009 mg/mL)
 - Articaine hydrochloride 4% (40 mg/mL) and epinephrine 1:100,000 (as epinephrine bitartrate 0.018 mg/mL)

4 CONTRAINDICATIONS

ARTICADENT is contraindicated in patients who are hypersensitive to products containing sulfites. Products containing sulfites may cause allergic-type reactions including anaphylactic symptoms and life-threatening or less severe asthmatic episodes in certain susceptible people. Sulfite sensitivity is seen more frequently in asthmatic than in non-asthmatic people [see *Warnings and Precautions (5.5)*].

5 WARNINGS AND PRECAUTIONS

5.1 Accidental Intravascular Injection

Accidental intravascular injection of ARTICADENT may be associated with convulsions, followed by central nervous system or cardiorespiratory depression and coma, progressing ultimately to respiratory arrest. Dental practitioners who employ local anesthetic agents including ARTICADENT should be well versed in diagnosis and management of emergencies that may arise from their use. Resuscitative equipment, oxygen, and other resuscitative drugs should be available for immediate use. To avoid intravascular injection, aspiration should be performed before ARTICADENT is injected. The needle must be repositioned until no return of blood can be elicited by aspiration. Note, however, that the absence of blood in the syringe does not guarantee that intravascular injection has been avoided.

Small doses of local anesthetics injected in dental blocks may produce adverse reactions similar to systemic toxicity seen with unintentional intravascular injections of larger doses. Confusion, convulsions, respiratory depression or respiratory arrest, and cardiovascular stimulation or depression have been reported. These reactions may be due to intra-arterial injection of the local anesthetic with retrograde flow to the cerebral circulation. Patients receiving these blocks should be observed constantly. Resuscitative equipment and personnel for treating adverse reactions should be immediately available. Dosage recommendations should not be exceeded [see *Dosage and Administration (2.1)*].

5.2 Systemic Toxicity

This includes toxicity arising from accidental intravascular injection of ARTICADENT discussed in Section 5.1, as well as that related to higher systemic concentrations of local anesthetics or epinephrine [see *Warnings and Precautions (5.3)*]. Systemic absorption of local anesthetics including ARTICADENT can produce effects on the central nervous and cardiovascular systems.

At blood concentrations achieved with therapeutic doses of ARTICADENT, changes in cardiac conduction, excitability, refractoriness, contractility, and peripheral vascular resistance are minimal.

However, toxic blood concentrations of ARTICADENT can depress cardiac conduction and excitability, which may lead to atrioventricular block, ventricular arrhythmias, and cardiac arrest, possibly resulting in fatalities. In addition, myocardial contractility is depressed and peripheral vasodilatation occurs, leading to decreased cardiac output and arterial blood pressure. ARTICADENT should also be used with caution in patients with heart block as well as those with impaired cardiovascular function since they may be less able to compensate for functional changes associated with the prolongation of A-V conduction produced by these drugs.

Restlessness, anxiety, tinnitus, dizziness, blurred vision, tremors, depression, or drowsiness may be early warning signs of central nervous system toxicity.

Careful and constant monitoring of cardiovascular and respiratory (adequacy of ventilation) vital signs and the patient's state of consciousness should be performed after each local anesthetic injection of ARTICADENT. Repeated doses of ARTICADENT may cause significant increases in blood levels because of possible accumulation of the drug or its metabolites.

The lowest dosage that results in effective anesthesia should be used to decrease the risk of high plasma levels and serious adverse effects. Tolerance to elevated blood levels varies with the status of the patient. Resuscitative equipment, oxygen, and other resuscitative drugs should be available for immediate use. Precautions for epinephrine administration, discussed in Section 5.3, should be observed.

Debilitated patients, elderly patients, acutely ill patients, and pediatric patients should be given reduced doses commensurate with their age and physical condition [see *Dosage and Administration (2.1, 2.3)*]. No studies have been performed in patients with liver impairment, and caution should be used in patients with severe hepatic disease.

5.3 Vasoconstrictor Toxicity

ARTICADENT contains epinephrine, a vasoconstrictor that can cause local or systemic toxicity and should be used cautiously. Local toxicity may include ischemic injury or necrosis, which may be related to vascular spasm. ARTICADENT should be used with caution in patients during and following the administration of potent general anesthetic agents, since cardiac arrhythmias may occur under such conditions. Patients with peripheral vascular disease and those with hypertensive vascular disease may exhibit exaggerated vasoconstrictor response.

The American Heart Association has made the following recommendation regarding the use of local anesthetics with vasoconstrictors in patients with ischemic heart disease: "Vasoconstrictor agents should be used in local anesthesia solutions during dental practice only when it is clear that the procedure will be shortened or the analgesia rendered more profound. When a vasoconstrictor is indicated, extreme care should be taken to avoid intravascular injection. The minimum possible amount of vasoconstrictor should be used." (Kaplan, 1986). It is essential to aspirate before any injection to avoid administration of the drug into the blood stream.

5.4 Methemoglobinemia

Cases of methemoglobinemia have been reported in association with local anesthetic use. Although all patients are at risk for methemoglobinemia, patients with glucose-6-phosphate dehydrogenase deficiency, congenital or idiopathic methemoglobinemia, cardiac or pulmonary compromise, infants under 6 months of age, and concurrent exposure to oxidizing agents or their metabolites are more susceptible to developing clinical manifestations of the condition. If local anesthetics must be used in these patients, close monitoring for symptoms and signs of methemoglobinemia is recommended.

Signs of methemoglobinemia may occur immediately or may be delayed some hours after exposure and are characterized by a cyanotic skin discoloration, and/or abnormal coloration of the blood.

Methemoglobin levels may continue to rise; therefore, immediate treatment is required to avert more serious central nervous system and cardiovascular adverse effects, including seizures, coma, arrhythmias, and death. Discontinue ARTICADENT and any other oxidizing agents. Depending on the

severity of the signs and symptoms, patients may respond to supportive care, i.e., oxygen therapy, hydration. A more severe clinical presentation may require treatment with methylene blue, exchange transfusion, or hyperbaric oxygen.

5.5 Anaphylaxis and Allergic-Type Reactions

ARTICADENT contains sodium metabisulfite, a sulfite that may cause allergic-type reactions including anaphylactic symptoms and life-threatening or less severe asthmatic episodes in certain susceptible people. The overall prevalence of sulfite sensitivity in the general population is unknown. Sulfite sensitivity is seen more frequently in asthmatic than in non-asthmatic people.

6 ADVERSE REACTIONS

Reactions to articaine are characteristic of those associated with other amide-type local anesthetics. Adverse reactions to this group of drugs may also result from excessive plasma levels (which may be due to overdosage, unintentional intravascular injection, or slow metabolic degradation), injection technique, volume of injection, or hypersensitivity or they may be idiosyncratic.

6.1 Clinical Studies Experience

Because clinical trials are conducted under widely varying conditions, adverse reaction rates observed in the clinical trials of a drug cannot be directly compared to rates in the clinical trials of another drug and may not reflect the rates observed in practice.

The reported adverse reactions are derived from clinical trials in the United States and the United Kingdom. Table 2 displays the adverse reactions reported in clinical trials where 882 individuals were exposed to ARTICADENT containing epinephrine 1:100,000. Table 3 displays the adverse reactions reported in clinical trials where 182 individuals were exposed to ARTICADENT containing epinephrine 1:100,000 and 179 individuals were exposed to ARTICADENT containing epinephrine 1:200,000.

Adverse reactions observed in at least 1% of patients:

Table 2: Adverse Reactions in Controlled Trials with an Incidence of 1% or Greater in Patients Administered ARTICADENT containing Epinephrine 1:100,000

Body System/Reaction	ARTICADENT containing epinephrine 1:100,000 (N=882) Incidence
<i>Body as a whole</i>	
Face Edema	13 (1%)
Headache	31 (4%)
Infection	10 (1%)
Pain	114 (13%)
<i>Digestive system</i>	
Gingivitis	13 (1%)
<i>Nervous system</i>	
Paresthesia	11 (1%)

Table 3: Adverse Reactions in Controlled Trials with an Incidence of 1% or Greater in Patients Administered ARTICADENT containing Epinephrine 1:200,000 and ARTICADENT containing Epinephrine 1:100,000

Reaction	ARTICADENT with epinephrine 1:200,000 (N=179) Incidence	ARTICADENT with epinephrine 1:100,000 (N=182) Incidence
Any adverse reaction	33 (18%)	35 (19%)
Pain	11 (6.1%)	14 (7.6%)
Headache	9 (5%)	6 (3.2%)
Positive blood aspiration into syringe	3 (1.6%)	6 (3.2%)
Swelling	3 (1.6%)	5 (2.7%)
Trismus	1 (0.5%)	3 (1.6%)
Nausea and emesis	3 (1.6%)	0 (0%)
Sleepiness	2 (1.1%)	1 (0.5%)
Numbness and tingling	1 (0.5%)	2 (1%)
Palpitation	0 (0%)	2 (1%)
Ear symptoms (earache, otitis media)	1 (0.5%)	2 (1%)
Cough, persistent cough	0 (0%)	2 (1%)

Adverse reactions observed in less than 1% of patients:

Table 4: Adverse Reactions in Controlled Trials with an Incidence of less than 1% but Considered Clinically Relevant in Patients Administered ARTICADENT

Body System	Reactions
Body as a Whole	Asthenia; back pain; injection site pain; burning sensation above injection site; malaise; neck pain
Cardiovascular System	Hemorrhage; migraine; syncope; tachycardia; elevated blood pressure
Digestive System	Dyspepsia; glossitis; gum hemorrhage; mouth ulceration; nausea; stomatitis; tongue edemas; tooth disorder; vomiting
Hemic and Lymphatic System	Ecchymosis; lymphadenopathy
Metabolic and Nutritional System	Edema; thirst
Musculoskeletal System	Arthralgia; myalgia; osteomyelitis
Nervous System	Dizziness; dry mouth; facial paralysis; hyperesthesia; increased salivation; nervousness; neuropathy; paresthesia; somnolence; exacerbation of Kearns-Sayre Syndrome
Respiratory System	Pharyngitis; rhinitis; sinus pain; sinus congestion
Skin and Appendages	Pruritus; skin disorder
Special Senses	Ear pain; taste perversion

6.2 Postmarketing Experience

The following adverse reactions have been identified during postapproval use of ARTICADENT. Because these reactions are reported voluntarily from a population of uncertain size, it is not always possible to reliably estimate their frequency or establish a causal relationship to drug exposure.

Persistent paresthesias of the lips, tongue, and oral tissues have been reported with use of articaine hydrochloride, with slow, incomplete, or no recovery. These postmarketing events have been reported chiefly following nerve blocks in the mandible and have involved the trigeminal nerve and its branches.

Hypoesthesia has been reported with use of articaine, especially in pediatric age groups, which is usually reversible. Prolonged numbness can result in soft tissue injuries such as that of the lips and tongue in these age groups.

Ischemic injury and necrosis have been described following use of articaine with epinephrine and have been postulated to be due to vascular spasm of terminal arterial branches.

Paralysis of ocular muscles has been reported, especially after posterior, superior alveolar injections of articaine during dental anesthesia. Symptoms include diplopia, mydriasis, ptosis, and difficulty in abduction of the affected eye. These symptoms have been described as developing immediately after injection of the anesthetic solution and persisting one minute to several hours, with generally complete recovery.

7 DRUG INTERACTIONS

The administration of local anesthetic solutions containing epinephrine to patients receiving monoamine oxidase inhibitors, nonselective beta-adrenergic antagonists, or tricyclic antidepressants may produce severe, prolonged hypertension. Phenothiazines and butyrophenones may reduce or reverse the pressor effect of epinephrine. Concurrent use of these agents should be avoided; however, in situations when concurrent therapy is necessary, careful patient monitoring is essential [see *Warnings and Precautions (5.2)*].

Patients who are administered local anesthetics are at increased risk of developing methemoglobinemia when concurrently exposed to the following drugs, which could include other local anesthetics:

Table 5: Examples of Drugs Associated with Methemoglobinemia

Class	Examples
Nitrates/Nitrites	nitric oxide, nitroglycerin, nitroprusside, nitrous oxide
Local anesthetics	articaine, benzocaine, bupivacaine, lidocaine, mepivacaine, prilocaine, procaine, ropivacaine, tetracaine
Antineoplastic agents	cyclophosphamide, flutamide, hydroxyurea, ifosfamide, rasburicase
Antibiotics	dapsone, nitrofurantoin, para-aminosalicylic acid, sulfonamides
Antimalarials	chloroquine, primaquine
Anticonvulsants	phenobarbital, phenytoin, sodium valproate
Other drugs	acetaminophen, metoclopramide, quinine, sulfasalazine

8 USE IN SPECIFIC POPULATIONS

8.1 Pregnancy

Teratogenic Effects - Pregnancy Category C.

There are no adequate and well-controlled studies in pregnant women with ARTICADENT. Articaine hydrochloride and epinephrine (1:100,000) has been shown to increase fetal deaths and skeletal variations in rabbits when given in doses approximately 4 times the maximum recommended human dose

(MRHD). ARTICADENT should be used during pregnancy only if the potential benefit justifies the potential risk to the fetus.

In embryo-fetal toxicity studies in rabbits, 80 mg/kg, subcutaneously (approximately 4 times the MRHD based on body surface area) caused fetal death and increased fetal skeletal variations, but these effects may be attributable to severe maternal toxicity, including seizures, observed at this dose. In contrast, no embryo-fetal toxicities were observed when articaine and epinephrine (1:100,000) was administered subcutaneously throughout organogenesis at doses up to 40 mg/kg in rabbits and 80 mg/kg in rats (approximately 2 times the MRHD based on body surface area).

In pre- and postnatal developmental studies subcutaneous administration of articaine hydrochloride to pregnant rats throughout gestation and lactation, at a dose of 80 mg/kg (approximately 2 times the MRHD based on body surface area) increased the number of stillbirths and adversely affected passive avoidance, a measure of learning, in pups. This dose also produced severe maternal toxicity in some animals. A dose of 40 mg/kg (approximately equal to the MRHD on a mg/m² basis) did not produce these effects. A similar study using articaine and epinephrine (1:100,000) rather than articaine hydrochloride alone produced maternal toxicity, but no effects on offspring.

8.3 Nursing Mothers

It is not known whether ARTICADENT is excreted in human milk. Because many drugs are excreted in human milk, caution should be exercised when ARTICADENT is administered to a nursing woman. When using ARTICADENT, nursing mothers may choose to pump and discard breast milk for approximately 4 hours (based on plasma half-life) following an injection of ARTICADENT (to minimize infant ingestion) and then resume breastfeeding.

8.4 Pediatric Use

Safety and effectiveness of ARTICADENT in pediatric patients below the age of 4 years have not been established. Safety of doses greater than 7 mg/kg (0.175 mL/kg) in pediatric patients has not been established.

The safety and effectiveness of ARTICADENT for local, infiltrative, or conductive anesthesia in both simple and complex dental procedures have been established in pediatric patients ages 4 to 16 years old. Safety and effectiveness was established in clinical trials with 61 pediatric patients between the ages of 4 and 16 years administered articaine hydrochloride 4% and epinephrine 1:100,000 injections. Fifty-one of these patients received doses from 0.76 mg/kg to 5.65 mg/kg (0.9 to 5.1 mL) for simple dental procedures and 10 patients received doses between 0.37 mg/kg and 7.48 mg/kg (0.7 to 3.9 mL) for complex dental procedures. Approximately 13% of these pediatric patients required additional injections of anesthetic for complete anesthesia. Dosages in pediatric patients should be reduced, commensurate with age, body weight, and physical condition [*see Dosage and Administration (2.2)*].

8.5 Geriatric Use

In clinical trials, 54 patients between the ages of 65 and 75 years, and 11 patients 75 years and over received ARTICADENT containing epinephrine 1:100,000. Among all patients between 65 and 75 years, doses from 0.43 mg/kg to 4.76 mg/kg (0.9 to 11.9 mL) were administered to 35 patients for simple procedures and doses from 1.05 mg/kg to 4.27 mg/kg (1.3 to 6.8 mL) were administered to 19 patients for complex procedures. Among the 11 patients ≥ 75 years old, doses from 0.78 mg/kg to 4.76 mg/kg (1.3 to 11.9 mL) were administered to 7 patients for simple procedures and doses of 1.12 mg/kg to 2.17 mg/kg (1.3 to 5.1 mL) were administered to 4 patients for complex procedures. Approximately 6% of patients between the ages of 65 and 75 years and none of the 11 patients 75 years of age or older required additional injections of anesthetic for complete anesthesia compared with 11% of patients between 17 and 65 years old who required additional injections.

No overall differences in safety or effectiveness were observed between elderly subjects and younger subjects, and other reported clinical experience has not identified differences in responses between the

elderly and younger patients, but greater sensitivity of some older individuals cannot be ruled out.

8.6 Renal and Hepatic Impairment

No studies have been performed with articaine hydrochloride 4% and epinephrine 1:200,000 injection or articaine hydrochloride 4% and epinephrine 1:100,000 injection in patients with renal or hepatic impairment [see *Warnings and Precautions (5.2)*].

10 OVERDOSAGE

Acute emergencies from local anesthetics are generally related to high plasma levels encountered during therapeutic use of local anesthetics or to unintended subarachnoid injection of local anesthetic solution [see *Warnings and Precautions (5.1, 5.2)*].

The first consideration is prevention, best accomplished by careful and constant monitoring of cardiovascular and respiratory vital signs and the patient's state of consciousness after each local anesthetic injection. At the first sign of change, oxygen should be administered.

The first step in the management of convulsions, as well as hypo-ventilation, consists of immediate attention to the maintenance of a patient airway and assisted or controlled ventilation as needed. The adequacy of the circulation should be assessed. Should convulsions persist despite adequate respiratory support, treatment with appropriate anticonvulsant therapy is indicated. The practitioner should be familiar with the use of anticonvulsant drugs, prior to the use of local anesthetics. Supportive treatment of circulatory depression may require administration of intravenous fluids and, when appropriate, a vasopressor.

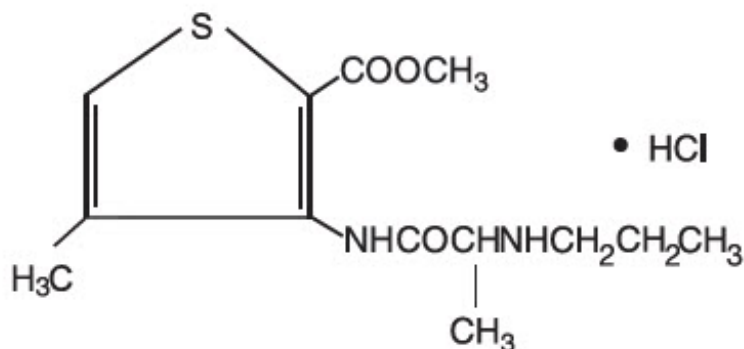
If not treated immediately, both convulsions and cardiovascular depression can result in hypoxia, acidosis, bradycardia, arrhythmias, and/or cardiac arrest. If cardiac arrest should occur, standard cardiopulmonary resuscitative measures should be instituted.

For additional information about overdose treatment, call a poison control center (1-800-222-1222).

11 DESCRIPTION

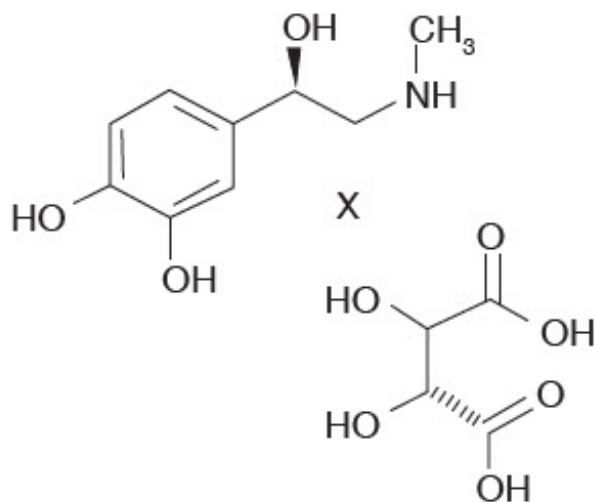
ARTICADENT (articaine hydrochloride and epinephrine injection), for intraoral submucosal infiltration use, is a sterile, aqueous solution that contains articaine HCl 4% (40 mg/mL) and epinephrine bitartrate in an epinephrine 1:200,000 or epinephrine 1:100,000 strength.

Articaine HCl is an amino amide local anesthetic, chemically designated as 4-methyl-3-[2-(propylamino)-propionamido]-2-thiophene-carboxylic acid, methyl ester hydrochloride and is a racemic mixture. Articaine HCl has a molecular weight of 320.84 and the following structural formula:



Articaine HCl has a partition coefficient in n-octanol/Soerensen buffer (pH 7.35) of 17 and a pK_a of 7.8. Epinephrine bitartrate, (-)-1-(3,4-Dihydroxyphenyl)-2-methylamino-ethanol (+) tartrate (1:1) salt, is a

vasoconstrictor with a concentration of 1:200,000 or 1:100,000 (expressed as free base). It has a molecular weight of 333.3 and the following structural formula:



ARTICADENT contains the following inactive ingredients: sodium chloride (1.6 mg/mL), and sodium metabisulfite (0.5 mg/mL). The product is formulated with a 15% overage of epinephrine. The pH is adjusted with sodium hydroxide.

12 CLINICAL PHARMACOLOGY

12.1 Mechanism of Action

Articaine HCl is an amide local anesthetic. Local anesthetics block the generation and conduction of nerve impulses, presumably by increasing the threshold for electrical excitation in the nerve, by slowing the propagation of the nerve impulse, and by reducing the rate of rise of the action potential. In general, the progression of anesthesia is related to the diameter, myelination, and conduction velocity of the affected nerve fibers. Epinephrine is a vasoconstrictor added to articaine HCl to slow absorption into the general circulation and thus prolong maintenance of an active tissue concentration.

12.2 Pharmacodynamics

Clinically, the order of loss of nerve function is as follows: (1) pain; (2) temperature; (3) touch; (4) proprioception; and (5) skeletal muscle tone.

The onset of anesthesia has been shown to be within 1 to 9 minutes of injection of ARTICADENT. Complete anesthesia lasts approximately 1 hour for infiltrations and up to approximately 2 hours for nerve block.

Administration of ARTICADENT results in a 3- to 5-fold increase in plasma epinephrine concentrations compared to baseline; however, in healthy adults it does not appear to be associated with marked increases in blood pressure or heart rate, except in the case of accidental intravascular injection [see *Warnings and Precautions (5.1)*].

12.3 Pharmacokinetics

Absorption:

Following dental injection by the submucosal route of an articaine solution containing epinephrine 1:200,000, articaine reaches peak blood concentration about 25 minutes after a single dose injection and 48 minutes after three doses. Peak plasma levels of articaine achieved after 68 and 204 mg doses are

385 and 900 ng/mL, respectively.

Following intraoral administration of a near maximum dose of 476 mg, articaine reaches peak blood concentrations of 2037 and 2145 ng/mL for articaine solution containing epinephrine 1:100,000 and 1:200,000, respectively, approximately 22 minutes post-dose.

Distribution:

Approximately 60 to 80% of articaine HCl is bound to human serum albumin and γ -globulins at 37°C *in vitro*.

Elimination:

Metabolism: Articaine HCl is metabolized by plasma carboxyesterase to its primary metabolite, articainic acid, which is inactive. *In vitro* studies show that the human liver microsome P450 isoenzyme system metabolizes approximately 5% to 10% of available articaine with nearly quantitative conversion to articainic acid.

Excretion: At the dose of 476 mg of articaine, the elimination half-life was 43.8 minutes and 44.4 minutes for articaine solution containing epinephrine 1:100,000 and 1:200,000, respectively. Articaine is excreted primarily through urine with 53-57% of the administered dose eliminated in the first 24 hours following submucosal administration. Articainic acid is the primary metabolite in urine. A minor metabolite, articainic acid glucuronide, is also excreted in urine. Articaine constitutes only 2% of the total dose excreted in urine.

13 NONCLINICAL TOXICOLOGY

13.1 Carcinogenesis, Mutagenesis, Impairment of Fertility

Studies to evaluate the carcinogenic potential of articaine HCl in animals have not been conducted. Five standard mutagenicity tests, including three *in vitro* tests (the nonmammalian Ames test, the mammalian Chinese hamster ovary chromosomal aberration test, and a mammalian gene mutation test with articaine HCl) and two *in vivo* mouse micronucleus tests (one with articaine and epinephrine 1:100,000 and one with articaine HCl alone) showed no mutagenic effects.

No effects on male or female fertility were observed in rats for articaine and epinephrine 1:100,000 administered subcutaneously in doses up to 80 mg/kg/day (approximately 2 times the MRHD based on body surface area).

14 CLINICAL STUDIES

Three randomized, double-blind, active-controlled studies were designed to evaluate effectiveness of ARTICADENT containing epinephrine 1:100,000 as a dental anesthetic. Patients ranging in age from 4 years to over 65 years old underwent simple dental procedures such as single uncomplicated extractions, routine operative procedures, single apical resections, and single crown procedures, or complex dental procedures such as multiple extractions, multiple crowns and/or bridge procedures, multiple apical resections, alveolectomies, mucogingival operations, and other surgical procedures on the bone. ARTICADENT containing epinephrine 1:100,000 was administered by intraoral submucosal infiltration and/or nerve block for these dental procedures.

Efficacy was measured immediately following the procedure by having the patient and investigator rate the patient's procedural pain using a 10 cm visual analog scale (VAS), in which a score of zero represented no pain and a score of 10 represented the worst pain imaginable. Mean patient and investigator VAS pain scores were 0.3-0.4 cm for simple procedures and 0.5-0.6 cm for complex procedures.

Four randomized, double-blind, active-controlled studies were performed comparing ARTICADENT containing epinephrine 1:100,000 versus ARTICADENT containing epinephrine 1:200,000. The first

two studies used electric pulp testers (EPT) to evaluate the success rate (maximum EPT value within 10 minutes), onset, and duration of ARTICADENT containing epinephrine 1:100,000 versus ARTICADENT containing epinephrine 1:200,000 and articaine solution without epinephrine in healthy adults between 18 and 65 years old. Results indicated that the anesthetic characteristics of the 1:100,000 and 1:200,000 formulations are not significantly different.

A third study compared the difference in visualization of the surgical field after administration of ARTICADENT containing epinephrine 1:100,000 versus ARTICADENT containing epinephrine 1:200,000 during bilateral maxillary periodontal surgeries in patients ranging from 21 to 65 years old. ARTICADENT containing epinephrine 1:100,000 provided better visualization of the surgical field and less blood loss during the procedures.

In a fourth study, designed to assess and compare cardiovascular safety, when the maximum dose of each formulation was administered, no clinically relevant differences in blood pressure or heart rate between formulations were observed.

15 REFERENCES

Kaplan, EL, editor. Cardiovascular disease in dental practice. Dallas; American Heart Association; 1986.

16 HOW SUPPLIED/STORAGE AND HANDLING

ARTICADENT (articaine hydrochloride and epinephrine) injection is a clear, colorless solution available in 1.7 mL single-dose glass cartridges, packaged in boxes of 50 cartridges in the following two strengths (less than a full cartridge or more than one cartridge may be used for an individual patient):

- ARTICADENT containing articaine HCl 4% (40 mg/mL) and epinephrine 1:200,000 (as epinephrine bitartrate 0.009 mg/mL) (NDC 66312-602-16)
- ARTICADENT containing articaine HCl 4% (40 mg/mL) and epinephrine 1:100,000 (as epinephrine bitartrate 0.018 mg/mL) (NDC 66312-601-16)

Storage and Handling

Store at controlled room temperature 25°C (77°F) with brief excursions permitted between 15° and 30°C (59°F-86°F) [see USP Controlled Room Temperature]. Protect from light. Do Not Freeze.

17 PATIENT COUNSELING INFORMATION

Loss of Sensation and Muscle Function:

Inform patients in advance of the possibility of temporary loss of sensation and muscle function following infiltration and nerve block injections [see Adverse Reactions (6.2)].

Instruct patients not to eat or drink until normal sensation returns.

Methemoglobinemia:

Inform patients that use of local anesthetics may cause methemoglobinemia, a serious condition that must be treated promptly. Advise patients or caregivers to seek immediate medical attention if they or someone in their care experience the following signs or symptoms: pale, gray, or blue colored skin (cyanosis); headache; rapid heart rate; shortness of breath; lightheadedness; or fatigue.

Manufactured for Dentsply Pharmaceutical
York, PA 17404
By Novocol Pharmaceutical of Canada, Inc.
Cambridge, Ontario, Canada N1R 6X3

Rev 07/2019 (2639-7)

PRINCIPAL DISPLAY PANEL - 1.7 mL Cartridge Carton - epinephrine 1:100,000

Dentsply
Sirona

NDC 66312-601-16
Reorder #: 51116

Articadent[®] DENTAL
(articaine HCl and epinephrine) Injection

Articaine hydrochloride 4% (40 mg/mL) and epinephrine 1:100,000

Intraoral Submucosal Injection
Contains sodium metabisulfite
50 Single-Dose Cartridges, 1.7 mL each

Sterile aqueous Solution for Injection
Rx only



PROTECT FROM LIGHT.
Store at 25°C (77°F)
DO NOT PERMIT TO FREEZE.

Articadent[®] DENTAL

(articaine HCl and epinephrine) Injection

Articaine hydrochloride 4% (40 mg/mL) and epinephrine 1:100,000

Consult package insert for dosage and full prescribing information.



NDC 66312-601-16
Reorder #: 51116

Articadent[®] DENTAL

(articaine HCl and epinephrine) Injection

Articaine hydrochloride 4% (40 mg/mL) and epinephrine 1:100,000

Intraoral Submucosal Injection
Contains sodium metabisulfite
50 Single-Dose Cartridges, 1.7 mL each

Sterile aqueous Solution for Injection
Rx only





Articadent® DENTAL (articaine HCl and epinephrine) Injection

Articaine hydrochloride 4% (40 mg/mL) and epinephrine 1:100,000

NDC 66312-601-16
Reorder #: 51116



42355-4
ba
Ink & Coating Free

Each mL contains:
Articaine hydrochloride40 mg
Epinephrine tartrate0.018 mg
corresponding in epinephrine
base to0.01 mg
Sodium chloride.....1.60 mg
Sodium metabisulfite.....0.50 mg
Sodium hydroxide q.s. to adjust pH
Water for injections q.s. ad 1 mL

Manufactured for
Dentsply Pharmaceutical,
York, PA 17404

Ink & Coating
Free

- To be sold only as unbroken package.
- This drug product is indicated for local, infiltrative, or conductive anesthesia in both simple and complex dental procedures.
- DO NOT INJECT INTRAVENOUSLY.
- USUAL DOSAGE: See package insert. Read directions enclosed concerning possible side effects, precautions and contraindications.
- This injection is not to be used if color is pinkish or darker than slightly yellow or if it contains a precipitate.
- Any unused portion of a cartridge should be discarded.
- PROTECT FROM LIGHT. KEEP IN CARTON UNTIL READY TO USE.

Manufactured for
Dentsply Pharmaceutical,
York, PA 17404
by Novocol Pharmaceutical of
Canada, Inc.

by Novocol Pharmaceutical
of Canada, Inc
www.dentsplysirona.com
1-800-989-8826
Made in Canada



PRINCIPAL DISPLAY PANEL - 1.7 mL Cartridge Carton - epinephrine 1:200,000

Dentsply
Sirona

NDC 66312-602-16
Reorder #: 52216

Articadent[®] DENTAL
(articaine HCl and epinephrine) Injection

Articaine hydrochloride 4% (40 mg/mL) and epinephrine 1:200,000

Intraoral Submucosal Injection

Contains sodium metabisulfite

50 Single-Dose Cartridges, 1.7 mL each

Sterile aqueous solution for Injection

Rx only



PROTECT FROM LIGHT.
Store at 25°C (77°F)
DO NOT PERMIT TO FREEZE.

Articadent[®] DENTAL (articaine HCl and epinephrine) Injection

Articaine hydrochloride 4% (40 mg/mL) and epinephrine 1:200,000

Consult package insert for dosage and full prescribing information.



NDC 66312-602-16
Reorder #: 52216

Articadent[®] DENTAL (articaine HCl and epinephrine) Injection

Articaine hydrochloride 4% (40 mg/mL) and epinephrine 1:200,000

Intraoral Submucosal Injection
Contains sodium metabisulfite
50 Single-Dose Cartridges, 1.7 mL each

Sterile aqueous solution for Injection
Rx only



Rx Only

• Store at 25°C (77°F). DO NOT PERMIT TO FREEZE.

by TROVOCOR PHARMACEUTICAL OF CANADA, INC.
Cambridge, Ontario N1R 6X3
Made in Canada



NDC 66312-602-16
Reorder #: 52216

Articadent® DENTAL

(articaine HCl and epinephrine) Injection

Articaine hydrochloride 4% (40 mg/mL) and epinephrine 1:200,000

- To be sold only as unbroken package.
- This drug product is indicated for local, infiltrative, or conductive anesthesia in both simple and complex dental procedures.
- DO NOT INJECT INTRAVENOUSLY.
- USUAL DOSAGE: See package insert. Read directions enclosed concerning possible side effects, precautions and contraindications.
- This injection is not to be used if color is pinkish or darker than slightly yellow or if it contains a precipitate.
- Any unused portion of a cartridge should be discarded.
- PROTECT FROM LIGHT.
- KEEP IN CARTON UNTIL READY TO USE.

Manufactured for
Dentsply Pharmaceutical,
York, PA 17404
by Novocol Pharmaceutical of Canada Inc.



42356-4
ba

Each mL contains:

Articaine hydrochloride	40 mg
Epinephrine tartrate	0.009 mg
corresponding in epinephrine	
base to	0.005 mg
Sodium chloride.....	1.60 mg
Sodium metabisulfite.....	0.50 mg
Sodium hydroxide q.s. to adjust pH	
Water for injections q.s. ad	1 mL

Manufactured for
Dentsply Pharmaceutical,
York, PA 17404
by Novocol Pharmaceutical

Ink & Coating
Free

of Canada, Inc
www.dentsplysirona.com
1-800-989-8826
Made in Canada



ARTICADENT

articaine hydrochloride and epinephrine bitartrate injection, solution

Product Information

Product Type	HUMAN PRESCRIPTION DRUG	Item Code (Source)	NDC:66312-601
Route of Administration	SUBCUTANEOUS		

Active Ingredient/Active Moiety

Ingredient Name	Basis of Strength	Strength
ARTICAINE HYDROCHLORIDE (UNII: QS9014Q792) (ARTICAINE - UNII:D3SQ406G9X)	ARTICAINE HYDROCHLORIDE	40 mg in 1 mL
EPINEPHRINE BITARTRATE (UNII: 30Q7KI53AK) (EPINEPHRINE - UNII:YKH834O4BH)	EPINEPHRINE	0.01 mg in 1 mL

Inactive Ingredients

Ingredient Name	Strength
SODIUM CHLORIDE (UNII: 451W47IQ8X)	1.6 mg in 1 mL
SODIUM METABISULFITE (UNII: 4VON5FNS3C)	0.5 mg in 1 mL
WATER (UNII: 059QF0KO0R)	
SODIUM HYDROXIDE (UNII: 55X04QC32I)	

Packaging

#	Item Code	Package Description	Marketing Start Date	Marketing End Date
1	NDC:66312-601-16	50 in 1 CARTON	04/03/2000	
1		1.7 mL in 1 CARTRIDGE; Type 0: Not a Combination Product		

Marketing Information

Marketing Category	Application Number or Monograph Citation	Marketing Start Date	Marketing End Date
NDA	NDA020971	04/03/2000	

ARTICADENT

articaïne hydrochloride and epinephrine bitartrate injection, solution

Product Information

Product Type	HUMAN PRESCRIPTION DRUG	Item Code (Source)	NDC:66312-602
Route of Administration	SUBCUTANEOUS		

Active Ingredient/Active Moiety

Ingredient Name	Basis of Strength	Strength
ARTICAINE HYDROCHLORIDE (UNII: QS9014Q792) (ARTICAINE - UNII:D3SQ406G9X)	ARTICAINE HYDROCHLORIDE	40 mg in 1 mL
EPINEPHRINE BITARTRATE (UNII: 30Q7KI53AK) (EPINEPHRINE - UNII:YKH834O4BH)	EPINEPHRINE	0.005 mg in 1 mL

Inactive Ingredients

Ingredient Name	Strength
SODIUM CHLORIDE (UNII: 451W47IQ8X)	1.6 mg in 1 mL

SODIUM METABISULFITE (UNII: 4VON5FNS3C)	0.5 mg in 1 mL
WATER (UNII: 059QF0KO0R)	
SODIUM HYDROXIDE (UNII: 55X04QC32I)	

Packaging

#	Item Code	Package Description	Marketing Start Date	Marketing End Date
1	NDC:66312-602-16	50 in 1 CARTON	04/03/2000	
1		1.7 mL in 1 CARTRIDGE; Type 0: Not a Combination Product		

Marketing Information

Marketing Category	Application Number or Monograph Citation	Marketing Start Date	Marketing End Date
NDA	NDA020971	04/03/2000	

Labeler - Dentsply Pharmaceutical (102221942)

Revised: 5/2014

Dentsply Pharmaceutical