

MARAVIROC - maraviroc tablet, film coated
Hetero Labs Limited

HIGHLIGHTS OF PRESCRIBING INFORMATION

These highlights do not include all the information needed to use MARAVIROC TABLETS safely and effectively. See full prescribing information for MARAVIROC TABLETS. MARAVIROC tablets, for oral use
Initial U.S. Approval: 2007

WARNING: HEPATOTOXICITY

See full prescribing information for complete boxed warning.

- Hepatotoxicity has been reported which may be preceded by severe rash or other features of a systemic allergic reaction (e.g., fever, eosinophilia, or elevated IgE). (5.1)
- Immediately evaluate patients with signs or symptoms of hepatitis or allergic reaction. (5.1)

INDICATIONS AND USAGE

Maraviroc tablet is a CCR5 co-receptor antagonist indicated in combination with other antiretroviral agents for the treatment of only CCR5-tropic HIV-1 infection in adults and pediatric patients 2 years of age and older weighing at least 10 kg. (1)

Limitations of Use:

- Not recommended in patients with dual/mixed- or CXCR4-tropic HIV-1. (1)

DOSAGE AND ADMINISTRATION

- Prior to initiation of maraviroc tablets for treatment of HIV-1 infection, test all patients for CCR5 tropism using a highly sensitive tropism assay. (2.1)
- Maraviroc tablets are taken twice daily by mouth and may be taken with or without food. Maraviroc tablets must be given in combination with other antiretroviral medications. (2.2)

Recommended Dosage in Adult Patients: (2.3)

Concomitant Medications	Dosage of Maraviroc tablets
When given with potent cytochrome P450 (CYP)3A inhibitors (with or without potent CYP3A inducers) including PIs (except tipranavir/ritonavir) (2.3, 7.1)	150 mg twice daily
With NRTIs, tipranavir/ritonavir, nevirapine, raltegravir, and other drugs that are not potent CYP3A inhibitors or CYP3A inducers (2.3, 7.1)	300 mg twice daily
With potent and moderate CYP3A inducers including efavirenz (without a potent CYP3A inhibitor) (2.3, 7.1)	600 mg twice daily

A more complete list of coadministered drugs is listed in *Dosage and Administration*. (2)

Recommended Dosage in Pediatric Patients 2 years and older and weighing at Least 10 kg:

Administer twice daily. Dosage should be based on body weight (kg) and concomitant medications and should not exceed the recommended adult dose. (2.4)

Recommended Dosage in Patients with Renal Impairment: Dose adjustment may be necessary in adult patients with renal impairment. (2.5)

DOSAGE FORMS AND STRENGTHS

Tablets: 150 mg and 300 mg (3)

CONTRAINDICATIONS

- Maraviroc tablets are contraindicated in patients with severe renal impairment or end-stage renal disease (ESRD) (CrCl less than 30 mL per minute) who are concomitantly taking potent CYP3A inhibitors or inducers. (4)

WARNINGS AND PRECAUTIONS

- Hepatotoxicity accompanied by severe rash or systemic allergic reaction, including potentially life-threatening events, has been reported. Hepatic laboratory parameters including ALT, AST, and bilirubin should be obtained prior to starting maraviroc tablets and at other time points during treatment as clinically indicated. If rash or symptoms or signs of hepatitis or allergic reaction develop, hepatic laboratory parameters should be monitored and discontinuation of treatment should be considered. When administering maraviroc tablets to patients with pre-existing liver dysfunction or who are co-infected with hepatitis B and/or C virus, additional monitoring may be warranted. (5.1)
- Severe and potentially life-threatening skin and hypersensitivity reactions have been reported in patients taking maraviroc. This includes cases of Stevens-Johnson syndrome, hypersensitivity reaction, and toxic epidermal necrolysis. Immediately discontinue maraviroc and other suspected agents if signs or symptoms of severe skin or hypersensitivity reactions develop and monitor clinical status, including liver aminotransferases, closely. (5.2)
- More cardiovascular events, including myocardial ischemia and/or infarction, were observed in treatment-experienced subjects who received maraviroc. Additional monitoring may be warranted. (5.3)
- If patients with severe renal impairment or ESRD receiving maraviroc (without concomitant CYP3A inducers or inhibitors) experience postural hypotension, the dose of maraviroc should be reduced from 300 mg twice daily to 150 mg twice daily. (5.3)

ADVERSE REACTIONS

- The most common adverse events in treatment-experienced adult subjects (greater than 8% incidence) which occurred at a higher frequency compared with placebo are upper respiratory tract infections, cough, pyrexia, rash, and dizziness. (6.1)
- The most common adverse events in treatment-naive adult subjects (greater than 8% incidence) which occurred at a higher frequency than the comparator arm are upper respiratory tract infections, bronchitis, flatulence, bloating and distention, upper respiratory tract signs and symptoms, and gastrointestinal atonic and hypomotility disorders. (6.1)
- The most common adverse reactions in treatment-experienced pediatric subjects (greater than or equal to 3% incidence) are vomiting, abdominal pain, diarrhea, nausea, and dizziness. (6.1)

To report SUSPECTED ADVERSE REACTIONS, contact Hetero Labs Limited at 1-866-495-1995 or FDA at 1-800-FDA-1088 or www.fda.gov/medwatch.

DRUG INTERACTIONS

- Coadministration with CYP3A inhibitors, including protease inhibitors (except tipranavir/ritonavir), will

- increase the concentration of maraviroc. (7.1)
- Coadministration with CYP3A inducers, including efavirenz, may decrease the concentration of maraviroc. (7.1)
 - Coadministration with St. John's wort is not recommended. (7.1).

USE IN SPECIFIC POPULATIONS

- Lactation: Women infected with HIV should be instructed not to breastfeed due to the potential for HIV transmission. (8.2)

See 17 for PATIENT COUNSELING INFORMATION.

Revised: 1/2022

FULL PRESCRIBING INFORMATION: CONTENTS*

BOXED WARNING

1 INDICATIONS AND USAGE

2 DOSAGE AND ADMINISTRATION

- 2.1 Testing prior to Initiation of Maraviroc Tablets
- 2.2 General Dosing Recommendations
- 2.3 Recommended Dosage in Adult Patients with Normal Renal Function
- 2.4 Recommended Dosage in Pediatric Patients with Normal Renal Function
- 2.5 Recommended Dosage in Patients with Renal Impairment

3 DOSAGE FORMS AND STRENGTHS

4 CONTRAINDICATIONS

5 WARNINGS AND PRECAUTIONS

- 5.1 Hepatotoxicity
- 5.2 Severe Skin and Hypersensitivity Reactions
- 5.3 Cardiovascular Events
- 5.4 Immune Reconstitution Syndrome
- 5.5 Potential Risk of Infection
- 5.6 Potential Risk of Malignancy

6 ADVERSE REACTIONS

- 6.1 Clinical Trials Experience
- 6.2 Postmarketing Experience

7 DRUG INTERACTIONS

- 7.1 Effect of Concomitant Drugs on the Pharmacokinetics of Maraviroc

8 USE IN SPECIFIC POPULATIONS

- 8.1 Pregnancy
- 8.2 Lactation
- 8.4 Pediatric Use
- 8.5 Geriatric Use
- 8.6 Renal Impairment
- 8.7 Hepatic Impairment

10 OVERDOSAGE

11 DESCRIPTION

12 CLINICAL PHARMACOLOGY

- 12.1 Mechanism of Action
- 12.2 Pharmacodynamics
- 12.3 Pharmacokinetics
- 12.4 Microbiology

13 NONCLINICAL TOXICOLOGY

- 13.1 Carcinogenesis & Mutagenesis & Impairment Of Fertility

14 CLINICAL STUDIES

- 14.1 Clinical Studies in Adult Subjects
- 14.2 Clinical Studies in Pediatric Subjects

15 REFERENCES

16 HOW SUPPLIED/STORAGE AND HANDLING

17 PATIENT COUNSELING INFORMATION

* Sections or subsections omitted from the full prescribing information are not listed.

FULL PRESCRIBING INFORMATION

BOXED WARNING

WARNING: HEPATOTOXICITY

Hepatotoxicity has been reported with use of maraviroc tablets. Severe rash or evidence of a systemic allergic reaction (e.g., fever, eosinophilia, or elevated IgE) prior to the development of hepatotoxicity may occur. Patients with signs or symptoms of hepatitis or allergic reaction following use of maraviroc tablets should be evaluated immediately [see Warnings and Precautions (5.1)].

1 INDICATIONS AND USAGE

Maraviroc tablets are indicated in combination with other antiretroviral agents for the

treatment of only CCR5-tropic human immunodeficiency virus type 1 (HIV-1) infection in adult and pediatric patients 2 years of age and older weighing at least 10 kg.

Limitations of Use:

- Maraviroc tablets are not recommended in patients with dual/mixed- or CXCR4-tropic HIV-1 [see *Microbiology (12.4)*].

2 DOSAGE AND ADMINISTRATION

2.1 Testing prior to Initiation of Maraviroc Tablets

Prior to initiation of maraviroc tablets for treatment of HIV-1 infection, test all patients for CCR5 tropism using a highly sensitive tropism assay. Maraviroc tablets are recommended for patients with only CCR5-tropic HIV-1 infection. Outgrowth of pre-existing low-level CXCR4- or dual/mixed-tropic HIV-1 not detected by tropism testing at screening has been associated with virologic failure on maraviroc tablets [see *Microbiology (12.4)*, *Clinical Studies (14.1)*].

Monitor patients for ALT, AST, and bilirubin prior to initiation of maraviroc tablets and at other time points during treatment as clinically indicated [see *Warnings and Precautions (5.1)*].

2.2 General Dosing Recommendations

- Maraviroc tablets are taken twice daily by mouth and may be taken with or without food.
- Maraviroc tablets must be given in combination with other antiretroviral medications.
- The recommended dosage of maraviroc tablets differs based on concomitant medications due to drug interactions.

2.3 Recommended Dosage in Adult Patients with Normal Renal Function

Table 1 displays oral dosage of maraviroc tablets based on different concomitant medications [see *Drug Interactions (7.1)*].

Table 1. Recommended Dosage in Adults

Concomitant Medications	Dosage of Maraviroc Tablets
Potent cytochrome P450 (CYP)3A inhibitors (with or without a potent CYP3A inducer) ^a	150 mg twice daily
Noninteracting concomitant medications ^b	300 mg twice daily
Potent and moderate CYP3A inducers (without a potent CYP3A inhibitor) ^c	600 mg twice daily

^aPotent CYP3A inhibitors (with or without a potent CYP3A inducer) including: clarithromycin, cobicistat, elvitegravir/ritonavir, itraconazole, ketoconazole, nefazodone, protease inhibitors (except tipranavir/ritonavir), telithromycin.

^bNoninteracting concomitant medications include all medications that are not potent CYP3A inhibitors or inducers such as: dolutegravir, enfuvirtide, nevirapine, all nucleoside reverse transcriptase inhibitors (NRTIs), raltegravir, and tipranavir/ritonavir.

^cPotent and moderate CYP3A inducers (without a potent CYP3A inhibitor) including: carbamazepine, efavirenz, etravirine, phenobarbital, phenytoin, and rifampin.

2.4 Recommended Dosage in Pediatric Patients with Normal Renal Function

The recommended dosage of maraviroc tablets should be based on body weight (kg) and should not exceed the recommended adult dose. The recommended dosage also differs based on concomitant medications due to drug interactions (Table 2 and Table 3) [see *Drug Interactions (7.1)*, *Use in Specific Populations (8.4)*].

Before prescribing maraviroc tablets, assess children for the ability to swallow tablets. If a child is unable to reliably swallow maraviroc tablets, the oral solution formulation should be prescribed.

The recommended oral dosage of maraviroc tablets in pediatric patients aged 2 years and older weighing at least 10 kg is presented in Table 2.

Table 2. Recommended Dosage in Pediatric Patients Aged 2 Years and Older Weighing at Least 10 kg (Tablets)

Concomitant Medications	Dosage of Maraviroc Tablets Based on Weight				
	10 kg to <14 kg	14 kg to <20 kg	20 kg to <30 kg	30 kg to <40 kg	≥40 kg
Potent CYP3A inhibitors (with or without a CYP3A inducer) ^a	50 mg twice daily	50 mg twice daily	75 mg twice daily	100 mg twice daily	150 mg twice daily
Noninteracting concomitant medications ^b	150 mg twice daily	200 mg twice daily	200 mg twice daily	300 mg twice daily	300 mg twice daily
Potent and moderate CYP3A inducers (without a potent CYP3A inhibitor) ^c	Not recommended ^d				

^aPotent CYP3A inhibitors (with or without a CYP3A inducer) including: clarithromycin, cobicistat, elvitegravir/ritonavir, itraconazole, ketoconazole, nefazodone, protease inhibitors (except tipranavir/ritonavir), telithromycin.

^bNoninteracting concomitant medications including all medications that are not potent CYP3A inhibitors or inducers such as: dolutegravir, enfuvirtide, nevirapine, all NRTIs, raltegravir, and tipranavir/ritonavir.

^cPotent and moderate CYP3A inducers (without a potent CYP3A inhibitor) including: carbamazepine, efavirenz, etravirine, phenobarbital, phenytoin, and rifampin.

^dInsufficient data are available to recommend use.

The recommended oral dosage of maraviroc oral solution in pediatric patients weighing at least 10 kg is presented in Table 3.

Table 3. Recommended Dosage in Pediatric Patients Weighing at Least 10 kg

Concomitant Medications	Dosage (Volume of Solution) of Maraviroc Tablets Based on Weight				
	10 kg to <14 kg	14 kg to <20 kg	20 kg to <30 kg	30 kg to <40 kg	≥40 kg
Potent CYP3A inhibitors (with or without a CYP3A inducer) ^a	50 mg (2.5 mL) twice daily	50 mg (2.5 mL) twice daily	80 mg (4 mL) twice daily	100 mg (5 mL) twice daily	150 mg (7.5 mL) twice daily
Noninteracting concomitant medications ^c	150 mg (7.5 mL) twice daily	200 mg (10 mL) twice daily	200 mg (10 mL) twice daily	300 mg (15 mL) twice daily	300 mg (15 mL) twice daily
Potent and moderate CYP3A inducers (without a potent CYP3A inhibitor) ^d	Not recommended ^d				

^a Potent CYP3A inhibitors (with or without a CYP3A inducer)

including: clarithromycin, cobicistat, elvitegravir/ritonavir, itraconazole, ketoconazole, nefazodone, protease inhibitors (except tipranavir/ritonavir), telithromycin.

^b Insufficient data are available to recommend use.

^c Noninteracting concomitant medications including all medications that are not potent CYP3A inhibitors or inducers such as: dolutegravir, enfuvirtide, nevirapine, all NRTIs, raltegravir, and tipranavir/ritonavir.

^d Potent and moderate CYP3A inducers (without a potent CYP3A inhibitor) including: carbamazepine, efavirenz, etravirine, phenobarbital, phenytoin, and rifampin.

Administer the oral solution using the included press-in bottle adapter and the appropriate oral dosing syringe: for doses of 2.5 mL, use the 3-mL syringe; for doses greater than 2.5 mL, use the 10-mL syringe.

2.5 Recommended Dosage in Patients with Renal Impairment

Adult Patients

Table 4 provides dosing recommendations for patients based on renal function and concomitant medications.

Table 4. Recommended Dosage in Adults Based on Renal Function

Concomitant Medications	Dosage of Maraviroc Tablets Based on Renal Function				
	Normal (CrCl >80 mL/min)	Mild (CrCl >50 and ≤80 mL/min)	Moderate (CrCl ≥30 and ≤50 mL/min)	Severe (CrCl <30 mL/min)	End-Stage Renal Disease on Regular Hemodialysis
Potent CYP3A inhibitors (with or without a CYP3A inducer) ^a	150 mg twice daily	150 mg twice daily	150 mg twice daily	Contraindicated	Contraindicated
Noninteracting concomitant medications ^b	300 mg twice daily	300 mg twice daily	300 mg twice daily	300 mg twice daily	300 mg twice daily ^c
Potent and moderate CYP3A inducers (without a potent CYP3A inhibitor) ^d	600 mg twice daily	600 mg twice daily	600 mg twice daily	Contraindicated	Contraindicated

^aPotent CYP3A inhibitors (with or without a CYP3A inducer) including: clarithromycin, cobicistat, elvitegravir/ritonavir, itraconazole, ketoconazole, nefazodone, protease inhibitors (except tipranavir/ritonavir), telithromycin.

^bNoninteracting concomitant medications include all medications that are not potent CYP3A inhibitors or inducers such as: dolutegravir, enfuvirtide, nevirapine, all NRTIs, raltegravir, and tipranavir/ritonavir.

^cDosage of maraviroc tablets should be reduced to 150 mg twice daily if there are any symptoms of postural hypotension [see *Contraindications (4) , Warnings and Precautions (5.3)*] .

^dPotent and moderate CYP3A inducers (without a potent CYP3A inhibitor) including: carbamazepine, efavirenz, etravirine, phenobarbital, phenytoin, and rifampin.

Pediatric Patients

There are no data to recommend specific doses of maraviroc tablets in pediatric patients with mild or moderate renal impairment [see *Use in Specific Populations (8.6)*]. Additionally, maraviroc tablets are contraindicated for pediatric patients with severe renal impairment or end-stage renal disease (ESRD) on regular hemodialysis who are receiving potent CYP3A inhibitors or inducers [see *Contraindications (4)*].

3 DOSAGE FORMS AND STRENGTHS

- 150 mg white to off-white colored, oval, biconvex, film coated tablets debossed with 'J' on one side and '62' on the other side.
- 300 mg white to off-white colored, oval, biconvex, film coated tablets debossed with 'J' on one side and '63' on the other side.

4 CONTRAINDICATIONS

Maraviroc tablets are contraindicated in patients with severe renal impairment or ESRD (CrCl less than 30 mL per minute) who are concomitantly taking potent CYP3A inhibitors or inducers [see *Warnings and Precautions (5.3)*].

5 WARNINGS AND PRECAUTIONS

5.1 Hepatotoxicity

Hepatotoxicity with allergic features including life-threatening events has been reported in clinical trials and postmarketing. Severe rash or evidence of systemic allergic reaction including drug-related rash with fever, eosinophilia, elevated IgE, or other systemic symptoms have been reported in conjunction with hepatotoxicity [see *Warnings and Precautions (5.2)*]. These events occurred approximately 1 month after starting treatment. Among reported cases of hepatitis, some were observed in the absence of allergic features or with no pre-existing hepatic disease.

Appropriate laboratory testing including ALT, AST, and bilirubin should be conducted prior to initiating therapy with maraviroc and at other time points during treatment as clinically indicated. Hepatic laboratory parameters should be obtained in any patient who develops rash, or signs or symptoms of hepatitis, or allergic reaction. Discontinuation of maraviroc should be considered in any patient with signs or symptoms of hepatitis, or with increased liver transaminases combined with rash or other systemic symptoms.

When administering maraviroc to patients with pre-existing liver dysfunction or who are co-infected with hepatitis B and/or C virus, additional monitoring may be warranted. The safety and efficacy of maraviroc have not been specifically studied in patients with significant underlying liver disorders.

5.2 Severe Skin and Hypersensitivity Reactions

Severe, potentially life-threatening skin and hypersensitivity reactions have been reported in patients taking maraviroc, in most cases concomitantly with other drugs associated with these reactions. These include cases of Stevens-Johnson syndrome (SJS), toxic epidermal necrolysis (TEN), and drug rash with eosinophilia and systemic symptoms (DRESS) [see *Adverse Reactions (6.3)*]. The cases were characterized by features including rash, constitutional findings, and sometimes organ dysfunction, including hepatic failure. Discontinue maraviroc and other suspected agents immediately if signs or symptoms of severe skin or hypersensitivity reactions develop (including, but not limited to, severe rash or rash accompanied by fever, malaise, muscle or joint aches, blisters, oral lesions, conjunctivitis, facial edema, lip swelling, eosinophilia). Delay in stopping treatment with maraviroc or other suspect drugs after the onset of rash may result in a life-threatening reaction. Clinical status, including liver aminotransferases, should be monitored and appropriate therapy initiated.

5.3 Cardiovascular Events

Eleven subjects (1.3%) who received maraviroc had cardiovascular events, including myocardial ischemia and/or infarction, during the Phase 3 trials in treatment-experienced subjects (total exposure 609 patient-years [300 on maraviroc once daily + 309 on maraviroc twice daily]), while no subjects who received placebo had such events (total exposure 111 patient-years). These subjects generally had cardiac disease or cardiac risk factors prior to use of maraviroc, and the relative contribution of maraviroc to these events is not known.

In the Phase 2b/3 trial in treatment-naive adult subjects, 3 subjects (0.8%) who received maraviroc had events related to ischemic heart disease and 5 subjects (1.4%) who received efavirenz had such events (total exposure 506 and 508 patient-years for maraviroc and efavirenz, respectively).

When maraviroc was administered to healthy volunteers at doses higher than the recommended dose, symptomatic postural hypotension was seen at a greater frequency than in placebo. However, when maraviroc was given at the recommended dose in HIV-1-infected adult subjects in Phase 3 trials, postural hypotension was seen at a rate similar to placebo (approximately 0.5%).

Patients with cardiovascular comorbidities, risk factors for postural hypotension, or receiving concomitant medication known to lower blood pressure, could be at increased risk of cardiovascular adverse events triggered by postural hypotension. Additional monitoring may be warranted.

Postural Hypotension in Patients with Renal Impairment

An increased risk of postural hypotension may occur in patients with severe renal insufficiency or in those with ESRD due to increased maraviroc exposure in some patients. Maraviroc should be used in patients with severe renal impairment or ESRD only if they are not receiving a concomitant potent CYP3A inhibitor or inducer. However, the use of maraviroc in these patients should only be considered when no alternative treatment options are available. If adult patients with severe renal impairment or ESRD experience any symptoms of postural hypotension while taking 300 mg twice daily, the dose should be reduced to 150 mg twice daily [see *Dosage and Administration (2.5)*].

5.4 Immune Reconstitution Syndrome

Immune reconstitution syndrome has been reported in patients treated with combination antiretroviral therapy, including maraviroc. During the initial phase of combination antiretroviral treatment, patients whose immune systems respond may develop an inflammatory response to indolent or residual opportunistic infections (such as infection with *Mycobacterium avium* infection, cytomegalovirus, *Pneumocystis jirovecii* pneumonia [PCP], tuberculosis, or reactivation of *Herpes simplex* and *Herpes zoster*), which may necessitate further evaluation and treatment.

Autoimmune disorders (such as Graves' disease, polymyositis, and Guillain-Barré syndrome) have also been reported to occur in the setting of immune reconstitution; however, the time to onset is more variable, and can occur many months after initiation of treatment.

5.5 Potential Risk of Infection

Maraviroc antagonizes the CCR5 co-receptor located on some immune cells, and therefore could potentially increase the risk of developing infections. The overall incidence and severity of infection, as well as AIDS-defining category C infections, were comparable in the treatment groups during the Phase 3 adult treatment-experienced trials of maraviroc. While there was a higher rate of certain upper respiratory tract infections reported in the treatment arm receiving maraviroc compared with placebo (23% versus 13%), there was a lower rate of pneumonia (2% versus 5%) reported in subjects receiving maraviroc. A higher incidence of Herpes virus infections (11 per 100 patient-years) was also reported in the treatment arm receiving maraviroc when

adjusted for exposure compared with placebo (8 per 100 patient-years).

In the Phase 2b/3 trial in treatment-naive adult subjects, the incidence of AIDS-defining Category C events when adjusted for exposure was 1.8 for maraviroc compared with 2.4 for efavirenz per 100 patient-years of exposure.

Patients should be monitored closely for evidence of infections while receiving maraviroc.

5.6 Potential Risk of Malignancy

While no increase in malignancy has been observed with maraviroc, due to this drug's mechanism of action, it could affect immune surveillance and lead to an increased risk of malignancy.

The exposure-adjusted rate for malignancies per 100 patient-years of exposure in adult treatment-experienced trials was 4.6 for maraviroc compared with 9.3 on placebo. In treatment-naive adult subjects, the rates were 1.0 and 2.4 per 100 patient-years of exposure for maraviroc and efavirenz, respectively. Long-term follow-up is needed to more fully assess this risk.

6 ADVERSE REACTIONS

The following adverse reactions are discussed in other sections of the labeling:

- Hepatotoxicity [see *Boxed Warning, Warnings and Precautions (5.1)*]
- Severe Skin and Hypersensitivity Reactions [see *Warnings and Precautions (5.2)*]
- Cardiovascular Events [see *Warnings and Precautions (5.3)*]

6.1 Clinical Trials Experience

Because clinical trials are conducted under widely varying conditions, adverse reaction rates observed in the clinical trials of a drug cannot be directly compared with rates in the clinical trials of another drug and may not reflect the rates observed in practice.

Clinical Trials Experience in Adult Subjects

Treatment-Experienced Subjects: The safety profile of maraviroc is primarily based on 840 HIV-1-infected subjects who received at least 1 dose of maraviroc during two Phase 3 trials. A total of 426 of these subjects received the indicated twice-daily dosing regimen.

Assessment of treatment-emergent adverse events is based on the pooled data from 2 trials in subjects with CCR5-tropic HIV-1 (A4001027 and A4001028). The median duration of therapy with maraviroc for subjects in these trials was 48 weeks, with the total exposure on maraviroc twice daily at 309 patient-years versus 111 patient-years on placebo each administered with optimized background therapy (OBT). The population was 89% male and 84% white, with mean age of 46 years (range: 17 to 75 years). Subjects received dose equivalents of 300 mg maraviroc once or twice daily.

The most common adverse events reported with twice-daily therapy with maraviroc with frequency rates higher than placebo, regardless of causality, were upper respiratory tract infections, cough, pyrexia, rash, and dizziness. In these 2 trials, the rate of discontinuation due to adverse events was 5% for subjects who received maraviroc twice daily + OBT as well as those who received placebo + OBT. Most of the adverse events reported were judged to be mild to moderate in severity. The data described below occurred with twice-daily dosing of maraviroc.

The total numbers of subjects reporting infections were 233 (55%) and 84 (40%) in the group receiving maraviroc twice daily and the placebo group, respectively. Correcting for the longer duration of exposure on maraviroc compared with placebo, the exposure-adjusted frequency (rate per 100 subject-years) of these events was 133 for both maraviroc twice daily and placebo.

Dizziness or postural dizziness occurred in 8% of subjects on either maraviroc or placebo, with 2 subjects (0.5%) on maraviroc permanently discontinuing therapy (1 due to syncope, 1 due to orthostatic hypotension) versus 1 subject on placebo (0.5%) permanently discontinuing therapy due to dizziness.

Treatment-emergent adverse events, regardless of causality, from Trials A4001027 and A4001028 are summarized in Table 5. Selected events occurring at greater than or equal to 2% of subjects and at a numerically higher rate in subjects treated with maraviroc are included; events that occurred at the same or higher rate on placebo are not displayed.

Table 5. Selected Treatment-Emergent Adverse Events (All Causality) \geq 2% on Maraviroc (and at a Higher Rate Compared with Placebo) in Trials A4001027 and A4001028 (Pooled Analysis, 48 Weeks)

Body System/ Adverse Event	Maraviroc Twice Daily ^a		Placebo	
	(n = 426) %	Exposure-Adjusted Rate (per 100 pt- yrs) PYE=309 ^b	(n = 209) %	Exposure-Adjusted Rate (per 100 pt- yrs) PYE=111 ^b
Eye Disorders				
Conjunctivitis	2	3	1	3
Ocular infections, inflammations, and associated manifestations	2	3	1	2
Gastrointestinal Disorders				
Constipation	6	9	3	6
General Disorders and Administration Site Conditions				
Pyrexia	13	20	9	17
Pain and discomfort	4	5	3	5
Infections and Infestations				
Upper respiratory tract infection	23	37	13	27
Herpes infection	8	11	4	8
Sinusitis	7	10	3	6
Bronchitis	7	9	5	9
Folliculitis	4	5	2	4
Anogenital warts	2	3	1	3
Influenza	2	3	0.5	1
Otitis media	2	3	0.5	1
Metabolism and Nutrition Disorders				
Appetite disorders	8	11	7	13
Musculoskeletal and Connective Tissue Disorders				
Joint-related signs and symptoms	7	10	3	5
Muscle pains	3	4	0.5	1
Neoplasms Benign, Malignant, and Unspecified				
Skin neoplasms benign	3	4	1	3
Nervous System Disorders				
Dizziness/postural dizziness	9	13	8	17
Paresthesias and dysesthesias	5	7	3	6
Sensory abnormalities	4	6	1	3
Disturbances in consciousness	4	5	3	6
Peripheral neuropathies	4	5	3	6
Psychiatric Disorders				
Disturbances in initiating and maintaining sleep	8	11	5	10
Depressive disorders	4	6	3	5
Anxiety symptoms	4	5	3	7
Renal and Urinary Disorders				
Bladder and urethral symptoms	5	7	1	3

Urinary tract signs and symptoms	3	4	1	3
Respiratory, Thoracic, and Mediastinal Disorders				
Coughing and associated symptoms	14	21	5	10
Upper respiratory tract signs and symptoms	6	9	3	6
Nasal congestion and inflammations	4	6	3	5
Breathing abnormalities	4	5	2	5
Paranasal sinus disorders	3	4	0.5	1
Skin and Subcutaneous Tissue Disorders				
Rash	11	16	5	11
Apocrine and eccrine gland disorders	5	7	4	7.5
Pruritus	4	5	2	4
Lipodystrophies	3	5	0.5	1
Erythema	2	3	1	2
Vascular Disorders				
Vascular hypertensive disorders	3	4	2	4

^a300-mg dose equivalent.

^bPYE = Patient-years of exposure.

Laboratory Abnormalities: Table 6 shows the treatment-emergent Grade 3 to 4 laboratory abnormalities that occurred in greater than 2% of subjects receiving maraviroc.

Table 6. Maximum Shift in Laboratory Test Values (without Regard to Baseline) \geq 2% of Grade 3 to 4 Abnormalities (ACTG Criteria) in Trials A4001027 and A4001028 (Pooled Analysis, 48 Weeks)

		Maraviroc	Placebo + OBT
--	--	------------------	----------------------

Laboratory Parameter Preferred Term	Limit	Twice Daily + OBT	(n = 207) ^a
		(n = 421) ^a	%
		%	
Aspartate aminotransferase	>5.0 x ULN	4.8	2.9
Alanine aminotransferase	>5.0 x ULN	2.6	3.4
Total bilirubin	>2.5 x ULN	5.5	5.3
Amylase	>2.0 x ULN	5.7	5.8
Lipase	>2.0 x ULN	4.9	6.3
Absolute neutrophil count	<750/mm ³	4.3	2.4

ULN = Upper limit of normal.

^aPercentages based on total subjects evaluated for each laboratory parameter.

Treatment-Naive Subjects: Treatment-Emergent Adverse Events: Treatment-emergent adverse events, regardless of causality, from Trial A4001026, a double-blind, comparative, controlled trial in which 721 treatment-naive subjects received maraviroc 300 mg twice daily (n = 360) or efavirenz 600 mg once daily (n = 361) in combination with lamivudine/zidovudine (COMBIVIR) for 96 weeks, are summarized in Table 7. Selected events occurring in greater than or equal to 2% of subjects and at a numerically higher rate in subjects treated with maraviroc are included; events that occurred at the same or higher rate on efavirenz are not displayed.

Table 7. Selected Treatment-Emergent Adverse Events (All Causality) ≥2% on maraviroc (and at a Higher Rate Compared with Efavirenz) in Trial A4001026 (96 Weeks)

Body System/ Adverse Event	Maraviroc tablets 300 mg Twice Daily + Lamivudine/Zidovudine (n = 360) (%)	Efavirenz 600 mg Once Daily + Lamivudine/Zidovudine (n = 361) (%)
Blood and Lymphatic System Disorders		
Anemias NEC	8	5
Neutropenias	4	3
Ear and Labyrinth Disorders		
Ear disorders NEC	3	2
Gastrointestinal Disorders		
Flatulence, bloating, and distention	10	7
Gastrointestinal atonic and hypomotility disorders NEC	9	5
Gastrointestinal signs and symptoms NEC	3	2
General Disorders and Administration Site Conditions		
Body temperature perception	3	1
Infections and Infestations		
Upper respiratory tract infection	32	30
Bronchitis	13	9

Herpes infection	7	6
Bacterial infections NEC	6	3
<i>Herpes zoster/</i> varicella	5	4
Tinea infections	4	3
Lower respiratory tract and lung infections	3	2
<i>Neisseria</i> infections	3	0
Viral infections NEC	3	2
Musculoskeletal and Connective Tissue Disorders		
Joint-related signs and symptoms	6	5
Nervous System Disorders		
Parasthesias and dyesthesias	4	3
Memory loss (excluding dementia)	3	1
Renal and Urinary Disorders		
Bladder and urethral symptoms	4	3
Reproductive System and Breast Disorders		
Erection and ejaculation conditions and disorders	3	2
Respiratory, Thoracic, and Mediastinal Disorders		
Upper respiratory tract signs and symptoms	9	5
Skin and Subcutaneous Disorders		
Nail and nail bed conditions (excluding infections and infestations)	6	2
Lipodystrophies	4	3
Acnes	3	2
Alopecias	2	1

Laboratory Abnormalities:

Table 8. Maximum Shift in Laboratory Test Values (without Regard to Baseline) \geq 2% of Grade 3 to 4 Abnormalities (ACTG Criteria) in Trial A4001026 (96 Weeks)

Laboratory Parameter Preferred Term	Limit	Maraviroc	Efavirenz
		300 mg Twice Daily + Lamivudine/Zidovudine (n = 353) ^a	600 mg Once Daily + Lamivudine/Zidovudine (n = 350) ^a
		%	%
Aspartate aminotransferase	>5.0 x ULN	4.0	4.0
Alanine aminotransferase	>5.0 x ULN	3.9	4.0
Creatine kinase	>10.0 x ULN	3.9	4.8
Amylase	>2.0 x ULN	4.3	6.0
Absolute neutrophil count	<750/mm ³	5.7	4.9
Hemoglobin	<7.0 g/dL	2.9	2.3

ULN = Upper limit of normal.

^a n = Total number of subjects evaluable for laboratory abnormalities.

Percentages based on total subjects evaluated for each laboratory parameter. If the same subject in a given treatment group had greater than 1 occurrence of the same abnormality, only the most severe is counted.

Less Common Adverse Events in Clinical Trials: The following adverse events occurred in less than 2% of subjects treated with maraviroc or at a rate similar to the comparator. These events have been included because of their seriousness and either increased frequency on maraviroc or are potential risks due to the mechanism of action. Events attributed to the subject's underlying HIV-1 infection are not listed.

Blood and Lymphatic System: Marrow depression and hypoplastic anemia.

Cardiac Disorders: Unstable angina, acute cardiac failure, coronary artery disease, coronary artery occlusion, myocardial infarction, myocardial ischemia.

Hepatobiliary Disorders: Hepatic cirrhosis, hepatic failure, cholestatic jaundice, portal vein thrombosis, jaundice.

Infections and Infestations: Endocarditis, infective myositis, viral meningitis, pneumonia, treponema infections, septic shock, Clostridium difficile colitis, meningitis.

Musculoskeletal and Connective Tissue Disorders: Myositis, osteonecrosis, rhabdomyolysis, blood CK increased.

Neoplasms Benign, Malignant, and Unspecified (Including Cysts and Polyps): Abdominal neoplasm, anal cancer, basal cell carcinoma, Bowen's disease, cholangiocarcinoma, diffuse large B-cell lymphoma, lymphoma, metastases to liver, esophageal carcinoma, nasopharyngeal carcinoma, squamous cell carcinoma, squamous cell carcinoma of skin, tongue neoplasm (malignant stage unspecified), anaplastic large cell lymphomas T- and null-cell types, bile duct neoplasms malignant, endocrine neoplasms malignant and unspecified.

Nervous System Disorders: Cerebrovascular accident, convulsions and epilepsy, tremor (excluding congenital), facial palsy, hemianopia, loss of consciousness, visual field defect.

Clinical Trials Experience in Pediatric Subjects

HIV-1-Infected Pediatric Subjects: Trial A4001031 is an open-label trial in which 103 treatment-experienced, CCR5-tropic, HIV-1-infected pediatric subjects aged 2 to less than 18 years weighing at least 10 kg received maraviroc twice daily in combination with OBT. The dose of maraviroc was based on body surface area (BSA) and on whether the subject was receiving potent CYP3A inhibitors and/or inducers. The median duration of therapy with maraviroc was 131 weeks with 72% of subjects receiving study treatment for greater than 48 weeks and 62% of subjects receiving study treatment for 96 weeks.

In these 103 children and adolescents, the safety profile through 96 weeks was similar to that for adults. Most of the adverse reactions reported were mild to moderate; severe (Grade 3 and 4) adverse reactions occurred in 2% of subjects. The most common adverse reactions (all grades) reported with twice-daily therapy with maraviroc were vomiting (12%), abdominal pain (4%), diarrhea (4%), nausea (4%), and dizziness (3%). Three subjects (3%) discontinued due to adverse events.

Maraviroc-related gastrointestinal adverse events through 48 weeks (nausea, vomiting, diarrhea, constipation, and abdominal pain/cramps) were observed more commonly in subjects who received the maraviroc oral solution (21%) compared with those who received maraviroc tablets (16%). Subjects were permitted to change formulations after Week 48.

6.2 Postmarketing Experience

The following adverse events have been identified during post-approval use of maraviroc. Because these reactions are reported voluntarily from a population of uncertain size, it is not always possible to reliably estimate their frequency or establish a causal relationship to drug exposure.

Skin and Subcutaneous Tissue Disorders

Stevens-Johnson syndrome (SJS), drug rash with eosinophilia and systemic symptoms (DRESS), toxic epidermal necrolysis (TEN).

7 DRUG INTERACTIONS

7.1 Effect of Concomitant Drugs on the Pharmacokinetics of Maraviroc

Maraviroc is metabolized by CYP3A and is also a substrate for P-glycoprotein (P-gp), organic anion-transporting polypeptide (OATP)1B1, and multidrug resistance-associated protein (MRP)2. The pharmacokinetics of maraviroc are likely to be modulated by inhibitors and inducers of CYP3A and P-gp and may be modulated by inhibitors of OATP1B1 and MRP2.

Therefore, a dosage adjustment may be required when maraviroc is coadministered with those drugs [see *Dosage and Administration* (2.3, 2.4)].

Concomitant use of maraviroc and St. John's wort (*Hypericum perforatum*) or products containing St. John's wort is not recommended. Coadministration of maraviroc with St. John's wort is expected to substantially decrease maraviroc concentrations and may result in suboptimal levels of maraviroc and lead to loss of virologic response and possible resistance to maraviroc.

Additional drug interaction information is available [see *Clinical Pharmacology* (12.3)].

8 USE IN SPECIFIC POPULATIONS

8.1 Pregnancy

Pregnancy Exposure Registry

There is a pregnancy exposure registry that monitors pregnancy outcomes in women exposed to maraviroc during pregnancy. Physicians are encouraged to register patients by calling the Antiretroviral Pregnancy Registry (APR) at 1-800-258-4263.

Risk Summary

Limited data on the use of maraviroc during pregnancy from the APR and case reports are not sufficient to inform a drug-associated risk of birth defects and miscarriage. In animal reproduction studies, no evidence of adverse developmental outcomes was observed with maraviroc. During organogenesis in the rat and rabbit, systemic exposures (AUC) to maraviroc were approximately 20 times (rats) and 5 times (rabbits) the exposure in humans at the recommended 300-mg twice-daily dose. In the rat pre- and post-natal development study, maternal systemic exposure (AUC) to maraviroc was approximately 14 times the exposure in humans at the recommended 300-mg twice-daily dose (*see Data*).

The estimated background risk of major birth defects and miscarriage for the indicated population is unknown. All pregnancies have a background risk of birth defect, loss, or other adverse outcomes. In the U.S. general population, the estimated background risk of major birth defects and miscarriage in clinically recognized pregnancies is 2% to 4% and 15% to 20%, respectively.

Data

Animal Data: Maraviroc was administered orally to pregnant rats (up to 1,000 mg per kg per day) and rabbits (up to 75 mg per kg per day) on gestation Days 6 to 17 and 7 to 19, respectively. No adverse effects on embryo-fetal development were observed at these dose levels, resulting in exposures (AUC) approximately 20 times (rats) and 5 times (rabbits) higher than human exposures at the recommended daily dose. In the rat pre- and post-natal development study, maraviroc was administered orally at up to 1,000 mg per kg per day on gestation Day 6 to lactation/post-partum Day 20, with development of the offspring (including fertility and reproductive performance) unaffected by maternal administration of maraviroc at an exposure (AUC) approximately 14 times higher than human exposure at the recommended daily dose.

8.2 Lactation

Risk Summary

The Centers for Disease Control and Prevention recommend that HIV-1-infected mothers in the United States not breastfeed their infants to avoid risking postnatal transmission of HIV-1 infection.

There are no data on the presence of maraviroc in human milk, the effects on the breastfed infant, or the effects on milk production. When administered to lactating rats, maraviroc was present in milk (*see Data*). Because of the potential for (1) HIV transmission (in HIV-negative infants), (2) developing viral resistance (in HIV-positive infants), and (3) serious adverse reactions in a breastfed infant similar to those seen in adults, instruct mothers not to breastfeed if they are receiving maraviroc.

Data

Maraviroc (and related metabolites) was excreted into the milk of lactating rats following a single oral dose of maraviroc (100 mg per kg) on lactation Day 12, with a maximal milk concentration achieved one hour post-administration at a milk concentration approximately 2.5 times that of maternal plasma concentrations.

8.4 Pediatric Use

The safety and efficacy of maraviroc have been established in pediatric patients aged from aged 2 to less than 18 years. The use of maraviroc in pediatric patients was supported by pharmacokinetic and safety data described below and by previous

demonstration of efficacy in adult patients [see *Indications and Usage (1)*], *Dosage and Administration (2.4)*].

HIV-1-Infected Pediatric Patients Aged 2 to Less Than 18 Years: The safety, pharmacokinetic profile, and antiviral activity of maraviroc were evaluated in treatment-experienced, CCR5- tropic, HIV-1-infected pediatric subjects aged 2 to less than 18 years weighing at least 10 kg in an open-label, multicenter clinical trial, A4001031 [see *Adverse Reactions (6.1)*, *Clinical Studies (14.2)*]. Pharmacokinetics were evaluated in a total of 98 pediatric subjects: 85 subjects received maraviroc and concomitant medications that included potent CYP3A inhibitors with or without potent CYP3A inducers, 10 subjects received maraviroc and noninteracting medications (not containing potent CYP3A inhibitors or potent CYP3A inducers), and three subjects received maraviroc and medications that included potent CYP3A inducers without potent CYP3A inhibitors [see *Clinical Pharmacology (12.3)*].

There are insufficient data to make dosing recommendations for use of maraviroc in pediatric patients concomitantly receiving potent CYP3A inhibitors and weighing less than 10 kg, or in any pediatric patients concomitantly receiving potent CYP3A inducers without a potent CYP3A inhibitor [see *Dosage and Administration (2.4, 2.5)*].

Maraviroc is not recommended in pediatric patients weighing less than 10 kg.

8.5 Geriatric Use

There were insufficient numbers of subjects aged 65 and over in the clinical trials to determine whether they respond differently from younger subjects. In general, caution should be exercised when administering maraviroc in elderly patients, also reflecting the greater frequency of decreased hepatic and renal function, of concomitant disease and other drug therapies.

8.6 Renal Impairment

Recommended doses of maraviroc for adult patients with impaired renal function (CrCl less than or equal to 80 mL per minute) are based on the results of a pharmacokinetic trial conducted in healthy adult subjects with various degrees of renal impairment. Maraviroc has not been studied in pediatric patients with renal impairment. There are no data to recommend specific doses of maraviroc in pediatric patients with mild to moderate renal impairment [see *Use in Specific Populations (8.4)*]. Maraviroc is contraindicated in pediatric patients with severe renal impairment or ESRD on regular hemodialysis who are receiving potent CYP3A inhibitors [see *Contraindications (4)*].

The pharmacokinetics of maraviroc in adult subjects with mild and moderate renal impairment was similar to that in subjects with normal renal function [see *Clinical Pharmacology (12.3)*]. A limited number of adult subjects with mild and moderate renal impairment in the Phase 3 clinical trials (n = 131 and n = 12, respectively) received the same dose of maraviroc as that administered to subjects with normal renal function. In these subjects, there was no apparent difference in the adverse event profile for maraviroc compared with subjects with normal renal function.

If adult patients with severe renal impairment or ESRD not receiving a concomitant potent CYP3A inhibitor or inducer experience any symptoms of postural hypotension while taking maraviroc 300 mg twice daily, the dose should be reduced to 150 mg twice daily. No trials have been performed in subjects with severe renal impairment or ESRD co-treated with potent CYP3A inhibitors or inducers. Hence, no dose of maraviroc can be recommended, and maraviroc is contraindicated for these patients [see *Dosage and Administration (2.3)*, *Contraindications (4)*, *Warnings and Precautions (5.3)*, *Clinical Pharmacology (12.3)*].

8.7 Hepatic Impairment

Maraviroc is principally metabolized by the liver; therefore, when administering this drug to patients with hepatic impairment, maraviroc concentrations may be increased. Maraviroc concentrations are higher when maraviroc 150 mg is administered with a potent CYP3A inhibitor compared with following administration of 300 mg without a CYP3A inhibitor, so patients with moderate hepatic impairment who receive maraviroc 150 mg with a potent CYP3A inhibitor should be monitored closely for maraviroc-associated adverse events. Maraviroc has not been studied in subjects with severe hepatic impairment or in pediatric patients with any degree of hepatic impairment [see *Warnings and Precautions (5.1)*, *Clinical Pharmacology (12.3)*].

10 OVERDOSAGE

The highest single dose administered in clinical trials was 1,200 mg. The dose-limiting adverse event was postural hypotension, which was observed at 600 mg. While the recommended dose for maraviroc in patients receiving a CYP3A inducer without a

CYP3A inhibitor is 600 mg twice daily, this dose is appropriate due to enhanced metabolism.

Prolongation of the QT interval was seen in dogs and monkeys at plasma concentrations 6 and 12 times, respectively, those expected in humans at the intended exposure of 300-mg equivalents twice daily. However, no significant QT prolongation was seen in the trials in treatment-experienced subjects with HIV using the recommended doses of maraviroc, or in a specific pharmacokinetic trial to evaluate the potential of maraviroc to prolong the QT interval [see *Clinical Pharmacology* (12.2)].

There is no specific antidote for overdose with maraviroc. Treatment of overdose should consist of general supportive measures including keeping the patient in a supine position, careful assessment of patient vital signs, blood pressure, and ECG.

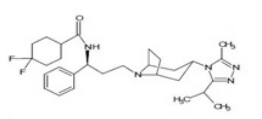
Administration of activated charcoal may also be used to aid in removal of unabsorbed drug. Hemodialysis had a minimal effect on maraviroc clearance and exposure in a trial in subjects with ESRD [see *Clinical Pharmacology* (12.3)].

11 DESCRIPTION

Maraviroc is a selective, slowly reversible, small molecule antagonist of the interaction between human CCR5 and HIV-1 gp120. Blocking this interaction prevents CCR5-tropic HIV-1 entry into cells.

Maraviroc is available as film-coated tablets for oral administration containing either 150 or 300 mg of maraviroc and the following inactive ingredients: colloidal silicon dioxide, lactose monohydrate, magnesium stearate, microcrystalline cellulose, sodium starch glycolate. The tablets are coated with, Opadry II White contains lecithin, polyethylene glycol, polyvinyl alcohol, talc and titanium dioxide.

Maraviroc is chemically described as 4,4-Difluoro-N-[(1S)-3-[(3-exo)-3-[3-methyl-5-(1-methylethyl)-4H-1,2,4-triazolo-4-yl]-8-azabicyclo[3.2.1]oct-8-yl]-1-phenylpropyl]-cyclohexane carboxamide. The molecular formula is C₂₉H₄₁F₂N₅O and the structural formula is:



Maraviroc is a white to pale colored powder with a molecular weight of 513.67. It is freely soluble in methanol and hygroscopic.

12 CLINICAL PHARMACOLOGY

12.1 Mechanism of Action

Maraviroc is an HIV-1 antiviral drug [see *Microbiology* (12.4)].

12.2 Pharmacodynamics

Exposure-Response Relationship in Treatment-Experienced Adult Subjects

The relationship between maraviroc, modeled plasma trough concentration (C_{min}) (1 to 9 samples per subject taken on up to 7 visits), and virologic response was evaluated in 973 treatment-experienced HIV-1-infected subjects with varied optimized background antiretroviral regimens in Trials A4001027 and A4001028. The C_{min} , baseline viral load, baseline CD4+ cell count, and overall sensitivity score (OSS) were found to be important predictors of virologic success (defined as viral load less than 400 copies per mL at 24 weeks). Table 9 illustrates the proportions of subjects with virologic success (%) within each C_{min} quartile for 150-mg twice-daily and 300-mg twice-daily groups.

Table 9. Treatment-Experienced Subjects with Virologic Success by C_{min} Quartile (Q1 to Q4)

	150 mg Twice Daily (with CYP3A Inhibitors)			300 mg Twice Daily (without CYP3A Inhibitors)		
	n	Median C_{min}	% Subjects with Virologic Success	n	Median C_{min}	% Subjects with Virologic Success
Placebo	160	-	30.6	35	-	28.6
Q1	78	33	52.6	22	13	50.0

Q2	77	87	63.6	22	29	68.2
Q3	78	166	78.2	22	46	63.6
Q4	78	279	74.4	22	97	68.2

Exposure-Response Relationship in Treatment-Naive Adult Subjects

The relationship between maraviroc, modeled plasma trough concentration (C_{min}) (1 to 12 samples per subject taken on up to 8 visits), and virologic response was evaluated in 294 treatment-naive HIV-1-infected subjects receiving maraviroc 300 mg twice daily in combination with lamivudine/zidovudine in Trial A4001026. Table 10 illustrates the proportion (%) of subjects with virologic success less than 50 copies per mL at 48 weeks within each C_{min} quartile for the 300-mg twice-daily dose.

Table 10. Treatment-Naive Subjects with Virologic Success by C_{min} Quartile (Q1 to Q4)

	300 mg Twice Daily		
	n	Median C_{min}	% Subjects with Virologic Success
Q1	75	23	57.3
Q2	72	39	72.2
Q3	73	56	74.0
Q4	74	81	83.8

Eighteen of 75 (24%) subjects in Q1 had no measurable maraviroc concentration on at least one occasion versus 1 of 73 and 1 of 74 in Q3 and Q4, respectively.

Effects on Electrocardiogram

A placebo-controlled, randomized, crossover trial to evaluate the effect on the QT interval of healthy male and female volunteers was conducted with 3 single oral doses of maraviroc and moxifloxacin. The placebo-adjusted mean maximum (upper 1-sided 95% CI) increases in QTc from baseline after 100, 300, and 900 mg of maraviroc were -2 (0), -1 (1), and 1 (3) msec, respectively, and 13 (15) msec for moxifloxacin 400 mg. No subject in any group had an increase in QTc of greater than or equal to 60 msec from baseline. No subject experienced an interval exceeding the potentially clinically relevant threshold of 500 msec.

12.3 Pharmacokinetics

Table 11. Mean Maraviroc Pharmacokinetic Parameters in Adults

Patient Population	Maraviroc Dose	n	AUC ₁₂ (ng.h/mL)	C _{max} (ng/mL)	C _{min} (ng/mL)
Healthy volunteers (Phase 1)	300 mg twice daily	64	2,908	888	43.1
Asymptomatic HIV subjects (Phase 2a)	300 mg twice daily	8	2,550	618	33.6
Treatment-experienced HIV subjects (Phase 3)a	300 mg twice daily	94	1,513	266	37.2
	150 mg twice daily (+ CYP3A inhibitor)	375	2,463	332	101
Treatment-naive HIV subjects (Phase 2b/3)a	300 mg twice daily	344	1,865	287	60

a The estimated exposure is lower compared with other trials possibly due to sparse sampling, food effect, compliance, and concomitant medications.

Absorption

Peak maraviroc plasma concentrations are attained 0.5 to 4 hours following single oral doses of 1 to 1,200 mg administered to uninfected volunteers. The pharmacokinetics of oral maraviroc are not dose proportional over the dose range.

The absolute bioavailability of a 100-mg dose is 23% and is predicted to be 33% at 300 mg. Maraviroc is a substrate for the efflux transporter P-gp.

Effect of Food on Oral Absorption: Coadministration of a 300-mg tablet with a high-fat breakfast reduced maraviroc C_{max} and AUC by 33% and coadministration of 75 mg of oral solution with a high-fat breakfast reduced maraviroc AUC by 73% in healthy adult

volunteers. Studies with the tablet formulation demonstrated a reduced food effect at higher doses.

There were no food restrictions in the adult trials (using the tablet formulation) or in the pediatric trial (using both tablet and oral solution formulations) that demonstrated the efficacy/antiviral activity and safety of maraviroc [see *Clinical Studies (14.1, 14.2)*].

Distribution

Maraviroc is bound (approximately 76%) to human plasma proteins, and shows moderate affinity for albumin and alpha-1 acid glycoprotein. The volume of distribution of maraviroc is approximately 194 L.

Elimination

Metabolism: Trials in humans and *in vitro* studies using human liver microsomes and expressed enzymes have demonstrated that maraviroc is principally metabolized by the cytochrome P450 system to metabolites that are essentially inactive against HIV-1. *In vitro* studies indicate that CYP3A is the major enzyme responsible for maraviroc metabolism. *In vitro* studies also indicate that polymorphic enzymes CYP2C9, CYP2D6, and CYP2C19 do not contribute significantly to the metabolism of maraviroc.

Maraviroc is the major circulating component (~42% drug-related radioactivity) following a single oral dose of 300 mg [¹⁴C]-maraviroc. The most significant circulating metabolite in humans is a secondary amine (~22% radioactivity) formed by N-dealkylation. This polar metabolite has no significant pharmacological activity. Other metabolites are products of mono-oxidation and are only minor components of plasma drug-related radioactivity.

Excretion: The terminal half-life of maraviroc following oral dosing to steady state in healthy subjects was 14 to 18 hours. A mass balance/excretion trial was conducted using a single 300-mg dose of ¹⁴C-labeled maraviroc. Approximately 20% of the radiolabel was recovered in the urine and 76% was recovered in the feces over 168 hours. Maraviroc was the major component present in urine (mean of 8% dose) and feces (mean of 25% dose). The remainder was excreted as metabolites.

Specific Populations

Patients with Hepatic Impairment: Maraviroc is primarily metabolized and eliminated by the liver. A trial compared the pharmacokinetics of a single 300-mg dose of maraviroc in subjects with mild (Child-Pugh Class A, n = 8) and moderate (Child-Pugh Class B, n = 8) hepatic impairment with pharmacokinetics in healthy subjects (n = 8). The mean C_{max} and AUC were 11% and 25% higher, respectively, for subjects with mild hepatic impairment, and 32% and 46% higher, respectively, for subjects with moderate hepatic impairment compared with subjects with normal hepatic function. These changes do not warrant a dose adjustment. Maraviroc concentrations are higher when maraviroc 150 mg is administered with a potent CYP3A inhibitor compared with following administration of 300 mg without a CYP3A inhibitor, so patients with moderate hepatic impairment who receive maraviroc 150 mg with a potent CYP3A inhibitor should be monitored closely for maraviroc-associated adverse events. The pharmacokinetics of maraviroc have not been studied in subjects with severe hepatic impairment [see *Warnings and Precautions (5.1)*].

Patients with Renal Impairment: A trial compared the pharmacokinetics of a single 300-mg dose of maraviroc in adult subjects with severe renal impairment (CrCl less than 30 mL per minute, n = 6) and ESRD (n = 6) with healthy volunteers (n = 6). Geometric mean ratios for maraviroc C_{max} and AUC_{inf} were 2.4-fold and 3.2-fold higher, respectively, for subjects with severe renal impairment, and 1.7-fold and 2.0-fold higher, respectively, for subjects with ESRD as compared with subjects with normal renal function in this trial. Hemodialysis had a minimal effect on maraviroc clearance and exposure in subjects with ESRD. Exposures observed in subjects with severe renal impairment and ESRD were within the range observed in previous 300-mg single-dose trials of maraviroc in healthy volunteers with normal renal function. However, maraviroc exposures in the subjects with normal renal function in this trial were 50% lower than those observed in previous trials. Based on the results of this trial, no dose adjustment is recommended for patients with renal impairment receiving maraviroc without a potent CYP3A inhibitor or inducer. However, if patients with severe renal impairment or ESRD experience any symptoms of postural hypotension while taking maraviroc 300 mg twice daily, their dose should be reduced to 150 mg twice daily [see *Dosage and Administration (2.3), Warnings and Precautions (5.3)*].

In addition, the trial compared the pharmacokinetics of multiple-dose maraviroc in combination with saquinavir/ritonavir 1,000/100 mg twice daily (a potent CYP3A inhibitor combination) for 7 days in subjects with mild renal impairment (CrCl greater than 50 and less than or equal to 80 mL per minute, n = 6) and moderate renal impairment (CrCl greater than or equal to 30 and less than or equal to 50 mL per minute, n = 6) with healthy volunteers with normal renal function (n = 6). Subjects received 150 mg of maraviroc at different dose frequencies (healthy volunteers - every 12 hours; mild renal impairment - every 24 hours; moderate renal impairment - every 48 hours). Compared with healthy volunteers (dosed every 12 hours), geometric mean ratios for maraviroc AUC_{tau}, C_{max} and C_{min} were 50% higher, 20% higher, and 43% lower, respectively, for

subjects with mild renal impairment (dosed every 24 hours). Geometric mean ratios for maraviroc AUC_{tau}, C_{max} and C_{min} were 16% higher, 29% lower, and 85% lower, respectively, for subjects with moderate renal impairment (dosed every 48 hours) compared with healthy volunteers (dosed every 12 hours). Based on the data from this trial, no adjustment in dose is recommended for patients with mild or moderate renal impairment [see *Dosage and Administration* (2.3)].

12.4 Microbiology

Mechanism of Action

Maraviroc is a member of a therapeutic class called CCR5 co-receptor antagonists. Maraviroc selectively binds to the human chemokine receptor CCR5 present on the cell membrane, preventing the interaction of HIV-1 gp120 and CCR5 necessary for CCR5-tropic HIV-1 to enter cells. CXCR4-tropic and dual-tropic HIV-1 entry is not inhibited by maraviroc.

Antiviral Activity in Cell Culture

Maraviroc inhibits the replication of CCR5-tropic laboratory strains and primary isolates of HIV-1 in models of acute peripheral blood leukocyte infection. The mean EC₅₀ value (50% effective concentration) for maraviroc against HIV-1 group M isolates (subtypes A to J and circulating recombinant form AE) and group O isolates ranged from 0.1 to 4.5 nM (0.05 to 2.3 ng per mL) in cell culture.

When used with other antiretroviral agents in cell culture, the combination of maraviroc was not antagonistic with non-nucleoside reverse transcriptase inhibitors (NNRTIs: efavirenz and nevirapine), NRTIs (abacavir, didanosine, emtricitabine, lamivudine, stavudine, tenofovir, zalcitabine, and zidovudine), or protease inhibitors (PIs: amprenavir, atazanavir, darunavir, indinavir, lopinavir, nelfinavir, ritonavir, saquinavir, and tipranavir). Maraviroc was not antagonistic with the HIV-1 gp41 fusion inhibitor enfuvirtide. Maraviroc was not active against CXCR4-tropic and dual-tropic viruses (EC₅₀ value greater than 10 μM). The antiviral activity of maraviroc against HIV-2 has not been evaluated.

Resistance in Cell Culture: HIV-1 variants with reduced susceptibility to maraviroc have been selected in cell culture following serial passage of 2 CCR5-tropic viruses (CCI/85 and RU570). The maraviroc-resistant viruses remained CCR5-tropic with no evidence of a change from a CCR5-tropic virus to a CXCR4-using virus. Two amino acid residue substitutions in the V3-loop region of the HIV-1 envelope glycoprotein (gp160), A316T, and I323V (HXB2 numbering), were shown to be necessary for the maraviroc-resistant phenotype in the HIV-1 isolate CCI/85. In the RU570 isolate a 3-amino acid residue deletion in the V3 loop, ΔQAI (HXB2 positions 315 to 317), was associated with maraviroc resistance. The relevance of the specific gp120 substitutions observed in maraviroc-resistant isolates selected in cell culture to clinical maraviroc resistance is not known. Maraviroc-resistant viruses were characterized phenotypically by concentration-response curves that did not reach 100% inhibition in phenotypic drug assays, rather than increases in EC₅₀ values.

Cross-Resistance in Cell Culture: Maraviroc had antiviral activity against HIV-1 clinical isolates resistant to NNRTIs, NRTIs, PIs, and the gp41 fusion inhibitor enfuvirtide in cell culture (EC₅₀ values ranged from 0.7 to 8.9 nM [0.36 to 4.57 ng per mL]). Maraviroc-resistant viruses that emerged in cell culture remained susceptible to enfuvirtide and the protease inhibitor saquinavir.

Clinical Resistance: Virologic failure on maraviroc can result from genotypic and phenotypic resistance to maraviroc, through outgrowth of undetected CXCR4-using virus present before maraviroc treatment (see *Tropism* below), through resistance to background therapy drugs (Table 15), or due to low exposure to maraviroc [see *Clinical Pharmacology* (12.2)].

Antiretroviral Treatment-Experienced Adult Subjects (Trials A4001027 and A4001028): Week 48 data from treatment-experienced subjects failing maraviroc-containing regimens with CCR5-tropic virus (n = 58) have identified 22 viruses that had decreased susceptibility to maraviroc characterized in phenotypic drug assays by concentration-response curves that did not reach 100% inhibition. Additionally, CCR5-tropic virus from 2 of these treatment-failure subjects had greater than or equal to 3-fold shifts in EC₅₀ values for maraviroc at the time of failure.

Fifteen of these viruses were sequenced in the gp120 encoding region and multiple amino acid substitutions with unique patterns in the heterogeneous V3 loop region were detected. Changes at either amino acid position 308 or 323 (HXB2 numbering) were seen in the V3 loop in 7 of the subjects with decreased maraviroc susceptibility. Substitutions outside the V3 loop of gp120 may also contribute to reduced susceptibility to maraviroc.

Antiretroviral Treatment-Naive Adult Subjects (Trial A4001026): Treatment-naive subjects receiving maraviroc had more virologic failures and more treatment-emergent resistance to the background regimen drugs compared with those receiving efavirenz (Table 15).

Table 15. Development of Resistance to Maraviroc or Efavirenz and Background Drugs in Antiretroviral Treatment-Naive Trial A4001026 for Patients with Only CCR5-Tropic Virus at Screening Using Enhanced Sensitivity TROFILE Assay

	Maraviroc	Efavirenz
Total N in dataset (as-treated)	273	241
Total virologic failures (as-treated)	85 (31%)	56 (23%)
Evaluable virologic failures with post baseline genotypic and phenotypic data	73	43
Lamivudine resistance	39 (53%)	13 (30%)
Zidovudine resistance	2 (3%)	0
Efavirenz resistance	-	23 (53%)
Phenotypic resistance to maraviroc ^a	19 (26 %)	-

^aIncludes subjects failing with CXCR4- or dual/mixed-tropism because these viruses are not intrinsically susceptible to maraviroc.

In an as-treated analysis of treatment-naive subjects at 96 weeks, 32 subjects failed a maraviroc-containing regimen with CCR5-tropic virus and had a tropism result at failure; 7 of these subjects had evidence of maraviroc phenotypic resistance defined as concentration-response curves that did not reach 95% inhibition. One additional subject had a greater than or equal to 3-fold shift in the EC₅₀ value for maraviroc at the time of failure. A clonal analysis of the V3 loop amino acid envelope sequences was performed from 6 of the 7 subjects. Changes in V3 loop amino acid sequence differed between each of these different subjects, even for those infected with the same virus clade, suggesting that there are multiple diverse pathways to maraviroc resistance. The subjects who failed with CCR5-tropic virus and without a detectable maraviroc shift in susceptibility were not evaluated for genotypic resistance.

Of the 32 maraviroc virologic failures failing with CCR5-tropic virus, 20 (63%) also had genotypic and/or phenotypic resistance to background drugs in the regimen (lamivudine, zidovudine).

Tropism: In both treatment-experienced and treatment-naive subjects, detection of CXCR4-using virus prior to initiation of therapy has been associated with a reduced virologic response to maraviroc.

Antiretroviral Treatment-Experienced Subjects (Trials A4001027 and A4001028): In the majority of cases, treatment failure on maraviroc was associated with detection of CXCR4-using virus (i.e., CXCR4- or dual/mixed-tropic) which was not detected by the tropism assay prior to treatment. CXCR4-using virus was detected at failure in approximately 55% of subjects who failed treatment on maraviroc by Week 48, as compared with 9% of subjects who experienced treatment failure in the placebo arm. To investigate the likely origin of the on-treatment CXCR4-using virus, a detailed clonal analysis was conducted on virus from 20 representative subjects (16 subjects from the maraviroc arms and 4 subjects from the placebo arm) in whom CXCR4-using virus was detected at treatment failure. From analysis of amino acid sequence differences and phylogenetic data, it was determined that CXCR4-using virus in these subjects emerged from a low level of pre-existing CXCR4-using virus not detected by the tropism assay (which is population-based) prior to treatment rather than from a co-receptor switch from CCR5-tropic virus to CXCR4-using virus resulting from mutation in the virus.

Detection of CXCR4-using virus prior to initiation of therapy has been associated with a reduced virological response to maraviroc. Furthermore, subjects failing twice-daily maraviroc at Week 48 with CXCR4-using virus had a lower median increase in CD4+ cell counts from baseline (+41 cells per mm³) than those subjects failing with CCR5-tropic virus (+162 cells per mm³). The median increase in CD4+ cell count in subjects failing in the placebo arm was +7 cells per mm³.

Antiretroviral Treatment-Naive Subjects (Trial A4001026): In a 96-week trial of antiretroviral treatment-naive subjects, 14% (12 of 85) who had only CCR5-tropic virus at screening with an enhanced sensitivity tropism assay (TROFILE) and failed therapy on maraviroc had CXCR4-using virus at the time of treatment failure. A detailed clonal analysis was conducted in 2 previously antiretroviral treatment-naive subjects enrolled in a Phase 2a monotherapy trial who had CXCR4-using virus detected after 10 days' treatment with maraviroc. Consistent with the detailed clonal analysis conducted in treatment-experienced subjects, the CXCR4-using variants appear to emerge from outgrowth of a pre-existing undetected CXCR4-using virus. Screening with an enhanced sensitivity tropism assay reduced the number of maraviroc virologic failures with CXCR4- or dual/mixed-tropic virus at failure to 12 compared with 24 when screening with the original tropism assay. All but one (11 of 12; 92%) of the maraviroc failures failing with CXCR4- or dual/mixed-tropic virus also had genotypic and phenotypic resistance to the background drug lamivudine at failure and 33% (4 of 12) developed zidovudine-associated resistance substitutions.

Subjects who had only CCR5-tropic virus at baseline and failed maraviroc therapy with CXCR4-using virus had a median increase in CD4+ cell counts from baseline of +113 cells per mm³ while those subjects failing with CCR5-tropic virus had an increase of +135 cells per mm³. The median increase in CD4+ cell count in subjects failing in the efavirenz arm was +95 cells per mm³.

Antiretroviral Treatment-Experienced Pediatric Subjects (Trial A4001031): In the Week 48 analysis of Trial A4001031 (n = 103), the mechanisms of resistance to maraviroc observed in the treatment-experienced pediatric population were similar to those observed in adult populations: reasons for virologic failure included failing with CXCR4- or dual/mixed-tropic virus, evidence of reduced maraviroc susceptibility as measured by

a decrease in maximal percentage inhibition (MPI), and emergence of resistance to background drug in the regimen.

13 NONCLINICAL TOXICOLOGY

13.1 Carcinogenesis & Mutagenesis & Impairment Of Fertility

Carcinogenesis

Long-term oral carcinogenicity studies of maraviroc were carried out in rasH2 transgenic mice (6 months) and in rats for up to 96 weeks (females) and 104 weeks (males). No drug-related increases in tumor incidence were found in mice at 1,500 mg per kg per day and in male and female rats at 900 mg per kg per day. The highest exposures in rats were approximately 11 times those observed in humans at the therapeutic dose of 300 mg twice daily for the treatment of HIV-1 infection.

Mutagenesis

Maraviroc was not genotoxic in the reverse mutation bacterial test (Ames test in Salmonella and E. coli), a chromosome aberration test in human lymphocytes, and mouse bone marrow micronucleus test.

Impairment of Fertility

Maraviroc did not impair mating or fertility of male or female rats and did not affect sperm of treated male rats at approximately 20-fold higher exposures (AUC) than in humans given the recommended 300-mg twice-daily dose.

14 CLINICAL STUDIES

14.1 Clinical Studies in Adult Subjects

The clinical efficacy and safety of maraviroc are derived from analyses of data from 3 trials in adult subjects infected with CCR5-tropic HIV-1: Trials A4001027 and A4001028 in antiretroviral treatment-experienced adult subjects and Trial A4001026 in treatment-naïve subjects. These trials were supported by a 48-week trial in antiretroviral treatment-experienced adult subjects infected with dual/mixed-tropic HIV-1, Trial A4001029.

Trials in CCR5-Tropic, Treatment-Experienced Subjects

Trials A4001027 and A4001028 were double-blind, randomized, placebo-controlled, multicenter trials in subjects infected with CCR5-tropic HIV-1. Subjects were required to have an HIV-1 RNA greater than 5,000 copies per mL despite at least 6 months of prior therapy with at least 1 agent from 3 of the 4 antiretroviral drug classes (greater than or equal to 1 NRTI, greater than or equal to 1 NNRTI, greater than or equal to 2 PIs, and/or enfuvirtide) or documented resistance to at least 1 member of each class. All subjects received an optimized background regimen consisting of 3 to 6 antiretroviral agents (excluding low-dose ritonavir) selected on the basis of the subject's prior treatment history and baseline genotypic and phenotypic viral resistance measurements. In addition to the optimized background regimen, subjects were then randomized in a 2:2:1 ratio to maraviroc 300 mg once daily, maraviroc 300 mg twice daily, or placebo. Doses were adjusted based on background therapy as described in *Dosage and Administration* (2), Table 1.

In the pooled analysis for Trials A4001027 and A4001028, the demographics and baseline characteristics of the treatment groups were comparable (Table 16). Of the 1,043 subjects with a CCR5-tropism result at screening, 7.6% had a dual/mixed-tropism result at the baseline visit 4 to 6 weeks later. This illustrates the background change from CCR5- to dual/mixed-tropism result over time in this treatment-experienced population, prior to a change in antiretroviral regimen or administration of a CCR5 co-receptor antagonist.

Table 16. Demographic and Baseline Characteristics of Subjects in Trials A4001027 and A4001028

	Maraviroc Twice Daily (n = 426)	Placebo (n = 209)
Age (years)		
Mean (range)	46.3 (21-73)	45.7 (29-72)
Sex:		
Male	382 (89.7%)	185 (88.5%)
Female	44 (10.3%)	24 (11.5%)
Race:		
White	363 (85.2%)	178 (85.2%)

Black	51 (12.0%)	26 (12.4%)
Other	12 (2.8%)	5 (2.4%)
Region:		
U.S.	276 (64.8%)	135 (64.6%)
Non-U.S.	150 (35.2%)	74 (35.4%)
Subjects with previous enfuvirtide use	142 (33.3%)	62 (29.7%)
Subjects with enfuvirtide as part of OBT	182 (42.7%)	91 (43.5%)
Baseline plasma HIV-1 RNA (log ₁₀ copies/mL)		
Mean (range)	4.85 (2.96-6.88)	4.86 (3.46-7.07)
Subjects with screening viral load ≥100,000 copies/mL	179 (42.0%)	84 (40.2%)
Baseline CD4+ cell count (cells/mm ³)		
Median (range)	167 (2-820)	171 (1-675)
Subjects with baseline CD4+ cell count ≤200 cells/mm ³)	250 (58.7%)	118 (56.5%)
Subjects with Overall Susceptibility Score (OSS): ^a		
0	57 (13.4%)	35 (16.7%)
1	136 (31.9%)	44 (21.1%)
2	104 (24.4%)	59 (28.2%)
≥3	125 (29.3%)	66 (31.6%)
Subjects with enfuvirtide resistance substitutions	90 (21.2%)	45 (21.5%)
Median number of resistance-associated: ^b		
PI substitutions	10	10
NNRTI substitutions	1	1
NRTI substitutions	6	6

^aOSS - Sum of active drugs in OBT based on combined information from genotypic and phenotypic testing.

^bResistance substitutions based on IAS guidelines.¹

The Week 48 results for the pooled Trials A4001027 and A4001028 are shown in Table 17.

Table 17. Outcomes of Randomized Treatment at Week 48 in Trials A4001027 and A4001028

Outcome	Maraviroc Twice Daily (n = 426)	Placebo (n = 209)	Mean Difference
Mean change from Baseline to Week 48 in HIV-1 RNA (log ₁₀ copies/mL)	-1.84	-0.78	-1.05
<400 copies/mL at Week 48	239 (56%)	47 (22%)	34%
<50 copies/mL at Week 48	194 (46%)	35 (17%)	29%
Discontinuations:			
Insufficient clinical response	97 (23%)	113 (54%)	
Adverse events	19 (4%)	11 (5%)	-
Other	27 (6%)	18 (9%)	-
Subjects with treatment-emergent CDC Category C events	22 (5%)	16 (8%)	-
Deaths (during trial or within 28 days of last dose)	9 (2%) ^a	1 (0.5%)	-

^aOne additional subject died while receiving open-label therapy with maraviroc subsequent to discontinuing double-blind placebo due to insufficient response.

After 48 weeks of therapy, the proportions of subjects with HIV-1 RNA less than 400 copies per mL receiving maraviroc compared with placebo were 56% and 22%, respectively. The mean changes in plasma HIV-1 RNA from baseline to Week 48 were -1.84 log₁₀copies per mL for subjects receiving maraviroc + OBT compared with -0.78 log₁₀copies per mL for subjects receiving OBT only. The mean increase in CD4+ cell count was higher on maraviroc twice daily + OBT (124 cells per mm³) than on placebo + OBT (60 cells per mm³).

Trial in Dual/Mixed-Tropic, Treatment-Experienced Subjects

Trial A4001029 was an exploratory, randomized, double-blind, multicenter trial to determine the safety and efficacy of maraviroc in subjects infected with dual/mixed co-receptor tropic HIV-1. The inclusion/exclusion criteria were similar to those for Trials A4001027 and A4001028 above and the subjects were randomized in a 1:1:1 ratio to maraviroc once daily, maraviroc twice daily, or placebo. No increased risk of infection or HIV-1 disease progression was observed in the subjects who received maraviroc. Use of maraviroc was not associated with a significant decrease in HIV-1 RNA compared with placebo in these subjects and no adverse effect on CD4+ cell count was noted.

Trial in Treatment-Naive Subjects

Trial A4001026 was a randomized, double-blind, multicenter trial in subjects infected with CCR5-tropic HIV-1 classified by the original TROFILE tropism assay. Subjects were

required to have plasma HIV-1 RNA greater than or equal to 2,000 copies per mL and could not have: 1) previously received any antiretroviral therapy for greater than 14 days, 2) an active or recent opportunistic infection or a suspected primary HIV-1 infection, or 3) phenotypic or genotypic resistance to zidovudine, lamivudine, or efavirenz. Subjects were randomized in a 1:1:1 ratio to maraviroc 300 mg once daily, maraviroc 300 mg twice daily, or efavirenz 600 mg once daily, each in combination with lamivudine/zidovudine. The efficacy and safety of maraviroc are based on the comparison of maraviroc twice daily versus efavirenz. In a pre-planned interim analysis at 16 weeks, maraviroc 300 mg once daily failed to meet the pre-specified criteria for demonstrating non-inferiority and was discontinued.

The demographic and baseline characteristics of the maraviroc and efavirenz treatment groups were comparable (Table 18). Subjects were stratified by screening HIV-1 RNA levels and by geographic region. The median CD4+ cell counts and mean HIV-1 RNA at baseline were similar for both treatment groups.

Table 18. Demographic and Baseline Characteristics of Subjects in Trial A4001026

	Maraviroc 300 mg Twice Daily + Lamivudine/Zidovudine (n = 360)	Efavirenz 600 mg Once Daily + Lamivudine/Zidovudine (n = 361)
Age (years):		
Mean	36.7	37.4
Range	20-69	18-77
Female, n%	104 (29)	102 (28)
Race, n%:		
White	204 (57)	198 (55)
Black	123 (34)	133 (37)
Asian	6 (2)	5 (1)
Other	27 (8)	25 (7)
Median (range) CD4+ cell count (cells/ μ L)	241 (5-1,422)	254 (8-1,053)
Median (range) HIV-1 RNA (log ₁₀ copies/mL)	4.9 (3-7)	4.9 (3-7)

The treatment outcomes at 96 weeks for Trial A4001026 are shown in Table 19. Treatment outcomes are based on reanalysis of the screening samples using a more sensitive tropism assay, enhanced sensitivity TROFILE HIV tropism assay, which became available after the Week 48 analysis; approximately 15% of the subjects identified as CCR5-tropic in the original analysis had dual/mixed- or CXCR4-tropic virus. Screening with enhanced sensitivity version of the TROFILE tropism assay reduced the number of maraviroc virologic failures with CXCR4- or dual/mixed-tropic virus at failure to 12 compared with 24 when screening with the original TROFILE HIV tropism assay.

Table 19. Trial Outcome (Snapshot) at Week 96 Using Enhanced Sensitivity Assay^a

Outcome at Week 96^b	Maraviroc 300 mg Twice Daily + Lamivudine/Zidovudine (n = 311) n (%)	Efavirenz 600 mg Once Daily + Lamivudine/Zidovudine (n = 303) n (%)
Virologic Responders: (HIV-1 RNA <400 copies/mL)	199 (64)	195 (64)
Virologic Failure:		
Non-sustained HIV-1 RNA suppression	39 (13)	22 (7)
HIV-1 RNA never suppressed	9 (3)	1 (<1)
Virologic Responders: (HIV-1 RNA <50 copies/mL)	183 (59)	190 (63)
Virologic Failure:		
Non-sustained HIV-1 RNA suppression	43 (14)	25 (8)
HIV-1 RNA never suppressed	21 (7)	3 (1)
Discontinuations due to:		
Adverse events	19 (6)	47 (16)
Death	2 (1)	2 (1)
Other ^c	43 (14)	36 (12)

^aThe total number of subjects (311, 303) in Table 19 represents the subjects who had a CCR5-tropic virus in the reanalysis of screening samples using the more sensitive tropism assay. This reanalysis reclassified approximately 15% of subjects shown in Table 18 as having dual/mixed- or CXCR4-tropic virus. These numbers are different than those presented in Table 18 because the numbers in Table 18 reflect the subjects with CCR5-tropic virus according to the original tropism assay.

^bWeek 48 results: Virologic responders (less than 400): 228 of 311 (73%) in maraviroc,

219 of 303 (72%) in efavirenz;

Virologic responders (less than 50): 213 of 311 (69%) in maraviroc, 207 of 303 (68%) in efavirenz.

^cOther reasons for discontinuation include lost to follow-up, withdrawn, protocol violation, and other.

The median increase from baseline in CD4+ cell counts at Week 96 was 184 cells per mm³ for the arm receiving maraviroc compared with 155 cells per mm³ for the efavirenz arm.

14.2 Clinical Studies in Pediatric Subjects

Trial in CCR5-Tropic, Treatment-Experienced Subjects

Trial A4001031 is an open-label, multicenter trial in pediatric subjects aged 2 to less than 18 years infected with only CCR5-tropic HIV-1. Subjects were required to have HIV-1 RNA greater than 1,000 copies per mL at screening. All subjects (n = 103) received maraviroc twice daily and OBT. Dosing of maraviroc was based on BSA and doses were adjusted based on whether the subject was receiving potent CYP3A inhibitors and/or inducers.

The population was 52% female and 69% black, with mean age of 10 years (range: 2 to 17 years). At baseline, mean plasma HIV-1 RNA was 4.4 log₁₀ copies per mL (range: 2.4 to 6.2 log₁₀ copies per mL), mean CD4+ cell count was 551 cells per mm³ (range: 1 to 1,654 cells per mm³), and mean CD4+ percent was 21% (range: 0% to 42%).

At 48 weeks, 48% of subjects treated with maraviroc and OBT achieved plasma HIV-1 RNA less than 48 copies per mL and 65% of subjects achieved plasma HIV-1 RNA less than 400 copies per mL. The mean CD4+ cell count (percent) increase from baseline to Week 48 was 247 cells per mm³ (5%).

15 REFERENCES

1. IAS-USA Drug Resistance Mutations Figures.
<http://www.iasusa.org/pub/topics/2006/issue3/125.pdf>

16 HOW SUPPLIED/STORAGE AND HANDLING

Maraviroc film-coated tablets are available as follows:

150 mg white to off-white colored, oval, biconvex, film coated tablets debossed with 'J' on one side and '62' on the other side.

Bottle of 60 tablets (NDC 68554-3079-0)

300 mg white to off-white colored, oval, biconvex, film coated tablets debossed with 'J' on one side and '63' on the other side.

Bottle of 60 tablets (NDC 68554-3080-0)

Maraviroc film-coated tablets should be stored at 20° to 25°C (68° to 77°F). [See USP Controlled Room Temperature.]

17 PATIENT COUNSELING INFORMATION

Advise the patient to read the FDA-approved patient labeling (Medication Guide).

Hepatotoxicity

Inform patients that hepatotoxicity, including life-threatening cases, has been reported with maraviroc tablets; therefore, it is important to inform the healthcare professional if patients have underlying hepatitis B or C or elevations in liver-associated tests prior to treatment. Inform patients to stop maraviroc tablets and seek medical evaluation immediately if they develop signs or symptoms of hepatitis or allergic reaction following use of maraviroc tablets. Advise patients that laboratory tests for liver enzymes and bilirubin will be ordered prior to starting maraviroc tablets, at other times during treatment, and if they develop severe rash or signs and symptoms of hepatitis or an allergic reaction on treatment [see *Dosage and Administration* (2.1), *Warnings and Precautions* (5.1, 5.2)].

Cardiovascular Events

When administering maraviroc tablets in patients with cardiovascular comorbidities, a history of postural hypotension or receiving concomitant medication known to lower blood pressure, advise patients that they may be at increased risk for cardiovascular events. Advise patients to avoid driving or operating machinery if they experience dizziness while taking maraviroc tablets [see *Warnings and Precautions (5.3)*].

Drug Interactions

Advise patients to inform their healthcare provider of concomitant HIV medications as dosage of maraviroc tablets may be modified depending on other HIV medications taken with maraviroc tablets. Advise patients that coadministration of maraviroc tablets with St. John's wort is not recommended as it can lead to loss of virologic response and possible resistance to maraviroc tablets [see *Dosage and Administration (2.2), Drug Interactions (7.1)*].

Missed Dosage

Inform patients that it is important to take maraviroc tablets in combination with other antiretroviral medications on a regular dosing schedule with or without food. Advise patients to avoid missing doses as it can result in development of resistance. Instruct patients that if they miss a dose, to take it as soon as they remember. Advise patients not to double their next dose or take more than the prescribed dose [see *Dosage and Administration (2.2)*].

Pregnancy

Inform patients that there is insufficient data on the safety of maraviroc tablets in pregnancy. Inform patients that there is an antiretroviral pregnancy registry that monitors pregnancy outcomes in women exposed to maraviroc tablets during pregnancy [see *Use in Specific Populations (8.1)*].

Lactation

Instruct women with HIV-1 infection not to breastfeed because HIV-1 can be passed to the baby in breast milk [see *Use in Specific Populations (8.2)*].

The brands listed are trademarks of their respective owners and are not trademarks of the Hetero Labs Limited.

Manufactured by:

HETERO™
Hetero Labs Limited
Jeedimetla, Hyderabad - 500 055,
India

Issued: 01/2022

MEDICATION GUIDE

Maraviroc Tablets (mah-RAV-er-rock)
What is the most important information I should know about maraviroc tablets? Maraviroc tablets can cause serious side effects including serious liver problems (liver toxicity). Some people who take maraviroc tablets can develop a severe rash or an allergic reaction before liver problems happen and may be life-threatening. Stop taking maraviroc tablets and call your healthcare provider right away if you get any of the following signs or symptoms of liver problems: <ul style="list-style-type: none">• an itchy rash on your body (allergic reaction)• vomiting• your skin or the white part of your eyes turns yellow (jaundice)• pain, aching, or tenderness on the right side of your stomach area• dark or "tea-colored" urine Your healthcare provider will do blood tests to check your liver before you begin treatment with maraviroc and as needed during treatment with maraviroc tablets.
What are maraviroc tablets? Maraviroc tablet is a prescription Human Immunodeficiency Virus-1 (HIV-1) medicine given with other HIV-1 medicines to treat CCR5-tropic HIV-1 infection in adults and children 2 years of age and older weighing at least 22 lb (10 kg). HIV-1 is the virus that causes Acquired Immune Deficiency Syndrome (AIDS). Use of maraviroc tablet is not recommended in people with dual/mixed- or CXCR4-tropic HIV-1. Maraviroc tablets should not be used in children weighing less than 22 pounds (10 kg).
Do not take maraviroc tablets if you have severe kidney problems or are on hemodialysis and are also taking certain other medications. Before you take maraviroc tablets, tell your healthcare provider about all of your medical conditions, including if you: <ul style="list-style-type: none">• have or have had liver problems including hepatitis B or C virus infection.

- have heart problems.
- have kidney problems.
- have low blood pressure or take medicines to lower blood pressure.
- are pregnant or plan to become pregnant. It is not known if maraviroc tablets may harm your unborn baby.

Pregnancy Registry. There is a pregnancy registry for women who take maraviroc tablets during pregnancy. The purpose of this registry is to collect information about the health of you and your baby.

Talk to your healthcare provider about how you can take part in this registry.

- are breastfeeding or plan to breastfeed. Do not breastfeed if you take maraviroc tablets. You should not breastfeed if you have HIV-1 because of the risk of passing HIV-1 to your baby. Talk to your healthcare provider about the best way to feed your baby.

Tell your healthcare provider about all the medicines you take, including prescription and over-the-counter medicines, vitamins, and herbal supplements.

• Some medicines may interact with maraviroc tablets. Keep a list of your medicines to show your healthcare provider and pharmacist.

- You can ask your healthcare provider or pharmacist for a list of medicines that interact with maraviroc tablets.

Do not start taking a new medicine without telling your healthcare provider. Your healthcare provider can tell you if it is safe to take maraviroc tablets with other medicines. Your healthcare provider may need to change your dose of maraviroc tablets when you take it with certain medicines. **You should not take maraviroc tablets if you also take St. John's wort (*Hypericum perforatum*).**

How should I take maraviroc tablets?

• **Take maraviroc tablets exactly as your healthcare provider tells you.**

- Do not change your dose or stop taking maraviroc tablets without first talking with your healthcare provider.
- If you miss a dose of maraviroc tablets, take it as soon as you remember. Do not take 2 doses at the same time. If you are not sure about your dosing, call your healthcare provider.
- Stay under the care of a healthcare provider during treatment with maraviroc tablets.
- Swallow maraviroc tablets whole. Do not chew the tablets.
- Maraviroc tablets may be taken with or without food.
- Your healthcare provider will prescribe a dose of maraviroc tablets based on your child's body weight and other medicines they are taking.
- Tell your healthcare provider if your child has trouble swallowing tablets. Maraviroc comes as tablets or as a liquid (oral solution).
- Do not run out of maraviroc tablets. The virus in your blood may increase and the virus in your blood may become harder to treat. When your supply starts to run low, get more from your healthcare provider or pharmacy.
- If you take too much maraviroc tablets, call your healthcare provider or go to the nearest hospital emergency room right away.

What are the possible side effects of maraviroc tablets?

Maraviroc tablets can cause serious side effects including:

• **See "What is the most important information I should know about maraviroc tablets?"**

• **Severe skin rash and allergic reactions.** Severe and potentially life-threatening skin reactions and allergic reactions have been reported in some people taking maraviroc tablets. If you develop a rash with any of the following symptoms, stop using maraviroc tablets and contact your healthcare provider right away:

- fever • problems breathing
- generally ill feeling • yellowing of the skin or whites of your eyes
- muscle aches • dark or tea-colored urine
- blisters or sores in your mouth • pain, aching, or tenderness on the right side below the ribs
- blisters or peeling of the skin • loss of appetite
- redness or swelling of the eyes • nausea/vomiting
- swelling of the mouth or face or lips

• **Heart problems** including heart attack.

• **Low blood pressure when standing up (postural hypotension)** that can cause dizziness or fainting. You should avoid driving or operating heavy machinery if you have dizziness during treatment with maraviroc tablets.

• **Changes in your immune system (Immune Reconstitution Syndrome)** can happen when you start taking HIV-1 medicines. Your immune system may get stronger and begin to fight infections that have been hidden in your body for a long time. Tell your healthcare provider right away if you develop new symptoms during treatment with maraviroc tablets.

• **Possible chance of infection or cancer.** Maraviroc tablets affects other immune system cells and therefore may possibly increase your chance for getting other infections or cancer.

The most common side effects of maraviroc tablets in adults include colds and cold-like symptoms, cough, fever, rash, bloating and gas, indigestion, constipation, and dizziness.

The most common side effects of maraviroc tablets in children

include vomiting, abdominal pain, diarrhea, nausea, and dizziness.

These are not all the possible side effects of maraviroc tablets. Call your doctor for medical advice about side effects. You may report side effects to FDA at 1-800-FDA-1088.

How should I store maraviroc tablets?

- Store maraviroc tablets at room temperature from 20° to 25°C (68° to 77°F). [See USP Controlled Room Temperature.]

Keep maraviroc tablets and all medicines out of the reach of children.

General information about the safe and effective use of maraviroc tablets.

Medicines are sometimes prescribed for purposes other than those mentioned in a Medication Guide. Do not use maraviroc tablets for a condition for which it was not prescribed. Do not give maraviroc tablets to other people, even if they have the same symptoms that you have. It may harm them.
 You can ask your pharmacist or healthcare provider for the information about maraviroc tablets that is written for health professionals.

What are the ingredients in maraviroc tablets?

Active ingredient:maraviroc

Inactive ingredients:colloidal silicon dioxide, lactose monohydrate, magnesium stearate, microcrystalline cellulose, sodium starch glycolate. The tablets are coated with Opadry II White contains lecithin, polyethylene glycol, polyvinyl alcohol, talc and titanium dioxide.

The brands listed are trademarks of their respective owners and are not trademarks of the Hetero Labs Limited.

This Medication Guide has been approved by the U.S. Food and Drug Administration.

Manufactured by:

HETERO™

Hetero Labs Limited

Jeedimetla, Hyderabad - 500 055,

India

Issued: 01/2022

PACKAGE LABEL.PRINCIPAL DISPLAY PANEL

Maraviroc Tablet 150 mg Label

Each film coated tablet contains 150 mg of maraviroc.

USUAL DOSAGE: See package insert for full Prescribing Information.

Store at 20° to 25°C (68° to 77°F). [See USP Controlled Room Temperature.]

Dispense in tight containers (USP).

US Contact Number: 866-495-1995

NDC 68554-3079-0

Maraviroc Tablets
150 mg

PHARMACIST : Please dispense with attached Medication Guide to each patient.

Rx only

60 Tablets

HETERO

Mfg. Lic. No.: 22/RR/AP/2001/F/R

OVER PRINTING AREA

2071294

Manufactured by:
HETERO™
HETERO LABS LIMITED
22-110, I.D.A., Jeedimetla,
Hyderabad - 500 055, India.

Maraviroc Tablet 300 mg Label

Each film coated tablet contains 300 mg of maraviroc.

USUAL DOSAGE: See package insert for full Prescribing Information.

Store at 20° to 25°C (68° to 77°F). [See USP Controlled Room Temperature.]

Dispense in tight containers (USP).

US Contact Number: 866-495-1995

NDC 68554-3080-0

Maraviroc Tablets
300 mg

PHARMACIST : Please dispense with attached Medication Guide to each patient.

Rx only

60 Tablets

HETERO

Mfg. Lic. No.: 22/RR/AP/2001/F/R

OVER PRINTING AREA

2071295

Manufactured by:
HETERO™
HETERO LABS LIMITED
22-110, I.D.A., Jeedimetla,
Hyderabad - 500 055, India.

MARAVIROC

maraviroc tablet, film coated

Product Information

Product Type	HUMAN PRESCRIPTION DRUG	Item Code (Source)	NDC:68554-3079
Route of Administration	ORAL		

Active Ingredient/Active Moiety

Ingredient Name	Basis of Strength	Strength
MARAVIROC (UNII: MD6P741V8A) (MARAVIROC - UNII:MD6P741V8A)	MARAVIROC	150 mg

Inactive Ingredients

Ingredient Name	Strength
SILICON DIOXIDE (UNII: ETJ7Z6XB04)	
LACTOSE MONOHYDRATE (UNII: EWQ57Q815X)	
MAGNESIUM STEARATE (UNII: 70097M6I30)	
MICROCRYSTALLINE CELLULOSE (UNII: OP1R32D61U)	
SODIUM STARCH GLYCOLATE TYPE A POTATO (UNII: 5856J3G2A2)	

LECITHIN, SOYBEAN (UNII: 1DI56QDM62)				
POLYETHYLENE GLYCOL, UNSPECIFIED (UNII: 3WJ005DW1A)				
POLYVINYL ALCOHOL, UNSPECIFIED (UNII: 532B59J990)				
TALC (UNII: 7SEV7J4R1U)				
TITANIUM DIOXIDE (UNII: 15FIX9V2JP)				
Product Characteristics				
Color	white (WHITE TO OFF WHITE)	Score	no score	
Shape	OVAL (biconvex)	Size	15mm	
Flavor		Imprint Code	j;62	
Contains				
Packaging				
#	Item Code	Package Description	Marketing Start Date	Marketing End Date
1	NDC:68554-3079-0	60 in 1 BOTTLE; Type 0: Not a Combination Product	02/06/2022	
Marketing Information				
Marketing Category	Application Number or Monograph Citation	Marketing Start Date	Marketing End Date	
ANDA	ANDA203347	02/06/2022		

MARAVIROC				
maraviroc tablet, film coated				
Product Information				
Product Type	HUMAN PRESCRIPTION DRUG	Item Code (Source)	NDC:68554-3080	
Route of Administration	ORAL			
Active Ingredient/Active Moiety				
Ingredient Name	Basis of Strength	Strength		
MARAVIROC (UNII: MD6P741V8A) (MARAVIROC - UNII:MD6P741V8A)	MARAVIROC	300 mg		
Inactive Ingredients				
Ingredient Name	Strength			
SILICON DIOXIDE (UNII: ETJ7Z6XB4)				
LACTOSE MONOHYDRATE (UNII: EWQ57Q815X)				
MAGNESIUM STEARATE (UNII: 70097M6I30)				
MICROCRYSTALLINE CELLULOSE (UNII: OP1R32D61U)				
SODIUM STARCH GLYCOLATE TYPE A POTATO (UNII: 5856J3G2A2)				
LECITHIN, SOYBEAN (UNII: 1DI56QDM62)				
POLYETHYLENE GLYCOL, UNSPECIFIED (UNII: 3WJ005DW1A)				
POLYVINYL ALCOHOL, UNSPECIFIED (UNII: 532B59J990)				
TALC (UNII: 7SEV7J4R1U)				
TITANIUM DIOXIDE (UNII: 15FIX9V2JP)				
Product Characteristics				
Color	white (WHITE TO OFF WHITE)	Score	no score	
Shape	OVAL (biconvex)	Size	19mm	
Flavor		Imprint Code	j;63	
Contains				
Packaging				
#	Item Code	Package Description	Marketing Start Date	Marketing End Date
1	NDC:68554-3080-0	60 in 1 BOTTLE; Type 0: Not a Combination Product	02/06/2022	
Marketing Information				
Marketing Category	Application Number or Monograph Citation	Marketing Start Date	Marketing End Date	
ANDA	ANDA203347	02/06/2022		

Labeler - Hetero Labs Limited (917261950)

Establishment			
Name	Address	ID/FEI	Business Operations
Hetero Labs Limited Unit III		676162024	manufacture(68554-3079, 68554-3080)

