

NUVALU EPSOM SALT- magnesium sulfate (heptahydrate) granule
J C SALES

NuValu Epsom Salt

DRUG FACTS

Active Ingredients

Magnesium sulfate (heptahydrate) 100%

Purpose

Saline laxative

Uses

- relieves occasional constipation (irregularity)
- generally produces bowel movement in 30 mins to 6 hours

Warnings

Ask a doctor before use if you have • kidney disease • a magnesium restricted diet
• stomach pain, nausea or vomiting • noticed a sudden change in bowel habits that lasts more than 2 weeks

Ask a doctor or pharmacist before using if you are

presently taking a prescription drug. Laxatives may affect how other drugs work.

When using this product • do not use more than directed

Stop use and ask a doctor if

- you have rectal bleeding or failure to have a bowel movement after use. This may indicate a serious condition.
- you need to use a laxative for more than 1 week

If pregnant or breast-feeding, ask a health professional before use

Keep out of reach of children. In case of overdose, get medical help or contact a Poison Control Center right away. (1-800-222-1222)

Directions

- do not exceed more than 2 doses per day; If necessary repeat dosage in 4 hours.

age	dose
-----	------

adults and children 12 years and older	2-4 level teaspoons dissolved in a full glass (8oz) of water
children 6 to 11 years	1-2 level teaspoons dissolved in a full glass (8oz) of water

Not recommended for children under 6 years of age.

Other Information

- magnesium content 493 mg per teaspoon (5 grams)

Store in cool dry place out of direct sunlight.

Inactive Ingredients

none

UNSCENTED

MULTI-PURPOSE

Magnesium sulfate U.S.P

Saline laxative

TAMPER RESISTANT PACKAGING

Caution: Do not use if heat sealed carton is improperly sealed

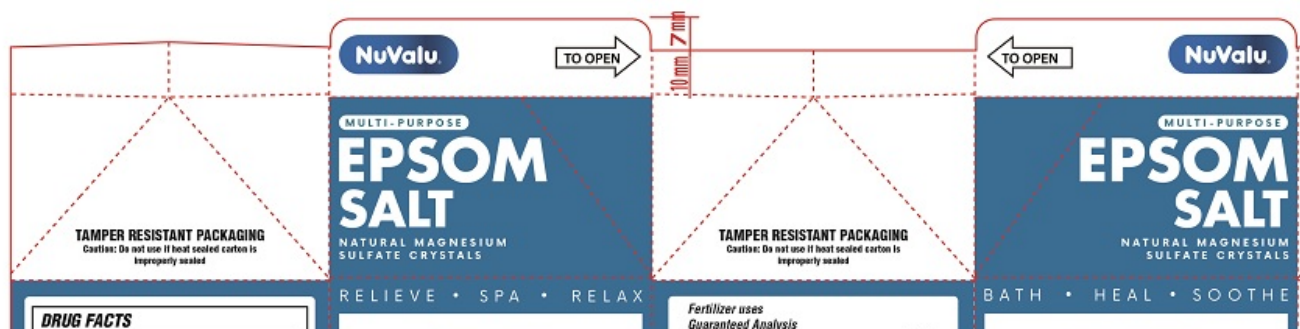
Package sold by weight not volume. Some settling of content may occur during shipment. If caking occurs, tap pouch gently to free granules.

Distributed by JC Sales,

Los Angeles, CA 90058

Made in China

Packaging



Active Ingredients
Magnesium sulfate (heptahydrate) 100%.

Purpose
Saline laxative

Uses
• relieves occasional constipation (irregularity)
• generally produces bowel movement in 30 mins to 6 hours

Warnings
Ask a doctor before use if you have: • kidney disease • a magnesium restricted diet • stomach pain, nausea or vomiting • noticed a sudden change in bowel habits that lasts more than 2 weeks
Ask a doctor or pharmacist before using if you are presently taking a prescription drug. Laxatives may affect how other drugs work.
When using this product • do not use more than directed

Stop use and ask a doctor if
• you have rectal bleeding or failure to have a bowel movement after use. This may indicate a serious condition.
• you need to use a laxative for more than 1 week

If pregnant or breast-feeding, ask a health professional before use

Keep out of reach of children. In case of overdose, get medical help or contact a Poison Control Center right away. (1-800-222-1222)

Directions • do not exceed more than 2 doses per day; If necessary repeat dosage in 4 hours.

age	dose
adults and children 12 years and older	2 - 4 level teaspoons dissolved in a full glass (8oz) of water
children 6 to 11 years	1 - 2 level teaspoons dissolved in a full glass (8oz) of water

Not recommended for children under 6 years of age

Other Information
• magnesium content 493 mg per teaspoon (5 grams)

For external use as a soaking solution:
Pour 2 cups of epsom salt under warm, running bath water. Soak for 20 minutes to soothe sore, tired muscles.

As a warm compress:
Dissolve 1 cup of epsom salt in 1 quart of warm water. Using a towel, apply solution to the affected area for 15-30 minutes to soothe pain and swelling. Repeat as needed.

Warnings:
When prompt relief is not obtained or where there is evidence of irritation or reflexion, discontinue use and consult a doctor. Do not use if pregnant or diabetic, unless advised by a doctor.

KEEP OUT OF REACH OF CHILDREN. In case of overdose, get medical help or contact a Poison Control Center right away. (1-800-222-1222)

Store in cool dry place out of direct sunlight.
Package sold by weight not volume. Some settling of content may occur during shipment. If caking occurs, tap box gently to free granules.

NuValu

UNSCENTED

EPSOM SALT

MULTI-PURPOSE

Magnesium Sulfate U.S.P.
Saline laxative
Calming & relaxing soak
Soothes minor aches, sprains & sore muscles
Great for gardening



Net Wt. 22oz. (624g)

Magnesium (Mg) 9.87%
(9.87% Water Soluble Magnesium (Mg))
Sulfur (S) 12.98%
(12.98% Combined Sulfur (S))
Derived from magnesium sulfate

Directions for use (fertilizer)
Lawns: Apply at a rate of 1/2 pound per one thousand square feet of lawn.
Garden Plants and Shrubs: Sprinkle 2 tablespoons around the base of each plant.
For use as a plant food supplement apply at the following rates:
Tonnelles, Roses One teaspoon per foot plant height every 2 weeks.
Lawns Three pounds per 1250 sq. ft.
Evergreens, Azaleas Apply one tablespoon per 9 sq. ft.
Rhododendrons (3 x 3) over the root zone every 2-4 weeks.
Trees Apply two table spoons per 9 sq. ft. (3'x3') over the root zone once every 4 months.
Garden Startup Sprinkle approximately one cup per 100 sq. ft. (10'x10') and mix into soil prior to planting.
House Plants Mix one teaspoon per gallon of water and feed to plants every 1-4 weeks.
For quicker results water plants after applying this product

NuValu Epsom Salt provides soothing relief as well as warming comfort to sore muscles. Simply dissolve two cups of **NuValu Epsom Salt** in a warm bath or to make a compress. In hot water and apply as a wet dressing with a towel. See drug facts for use as an effective saline laxative to relieve occasional constipation. Also makes an excellent fertilizer.

JC103019



8 85490 03019 1

Distributed by JC Sales,
Los Angeles, CA 90058
Made in China

DRUG FACTS

DRUG FACTS

Active Ingredients

Magnesium sulfate (heptahydrate) 100%.

Purpose

Saline laxative

Uses

- relieves occasional constipation (irregularity)
- generally produces bowel movement in 30 mins to 6 hours

Warnings

Ask a doctor before use if you have • kidney disease • a magnesium restricted diet • stomach pain, nausea or vomiting • noticed a sudden change in bowel habits that lasts more than 2 weeks

Ask a doctor or pharmacist before using if you are presently taking a prescription drug. Laxatives may affect how other drugs work.

When using this product • do not use more than directed

Stop use and ask a doctor if

- you have rectal bleeding or failure to have a bowel movement after use. This may indicate a serious condition.
- you need to use a laxative for more than 1 week

If pregnant or breast-feeding, ask a health professional before use

Keep out of reach of children. In case of overdose, get medical help or contact a Poison Control Center right away. (1-800-222-1222)

Directions • do not exceed more than 2 doses per day; If necessary repeat dosage in 4 hours.

age	dose
adults and children 12 years and older	2 - 4 level teaspoons dissolved in a full glass (8oz) of water
children 6 to 11 years	1 - 2 level teaspoons dissolved in a full glass (8oz) of water

Not recommended for children under 6 years of age

Other Information

- magnesium content 493 mg per teaspoon (5 grams)

NUVALU EPSOM SALT

magnesium sulfate (heptahydrate) granule

Product Information

Product Type	HUMAN OTC DRUG	Item Code (Source)	NDC:72520-001
Route of Administration	ORAL		

Active Ingredient/Active Moiety

Ingredient Name	Basis of Strength	Strength
MAGNESIUM SULFATE HEPTAHYDRATE (UNII: SK47B8698T) (MAGNESIUM CATION - UNII:T6V3LHY838)	MAGNESIUM SULFATE HEPTAHYDRATE	100 g in 100 g

Packaging

#	Item Code	Package Description	Marketing Start Date	Marketing End Date
1	NDC:72520-001-12	624 g in 1 BOX; Type 0: Not a Combination Product	11/30/2018	

Marketing Information

Marketing Category	Application Number or Monograph Citation	Marketing Start Date	Marketing End Date
OTC Monograph Drug	M007	11/30/2018	

Labeler - J C SALES (610969578)

Revised: 12/2024

J C SALES